

5938082059180	1N6030739524	Consumer 21 Macedonia	2	3008457.997662	852033.0024345
5938082090200	1N6035515206	Consumer 21 Macedonia	2	3009181.999254	850538.9972624
5938083081030	1N6030742569	Consumer 21 Macedonia	2	3009462.499912	850657.7328005
5938083081260	1N6030742572	Consumer 21 Macedonia	2	3009538.801963	850597.2578873
5938082056630	1N6038735400	Consumer 21 Macedonia	2	3006556.02029081	851794.275954225
5938092004500	1N6030740777	Consumer 21 Macedonia	2	3005654.999458	849280.0028988
5938092004170	1N6030740780	Consumer 21 Macedonia	2	3005786.658934	849441.9186478
5938092005920	1N6030740775	Consumer 21 Macedonia	2	3006058.001371	849055.9980232
5938092015060	1N6030740773	Consumer 21 Macedonia	2	3006244.800972	849162.8439404
5938092016100	1N6030742305	Consumer 21 Macedonia	2	3007022.99875	849055.0038742
5938092006200	1N6030742301	Consumer 21 Macedonia	2	3007067.73977804	849534.650615733
5938092007150	1N6030742304	Consumer 21 Macedonia	2	3007252.998645	849508.0044543
5938092007800	1N6030742302	Consumer 21 Macedonia	2	3007654.996367	849316.0031444
5938092019150	1N6030740789	Consumer 21 Macedonia	2	3008583.99350024	849141.00000303
5938092018490	1N6030740786	Consumer 21 Macedonia	2	3008121.995369	848913.0012317
5938082096980	1N6030742308	Consumer 21 Macedonia	2	3006887.995318	849577.9965636
5938092006710	1N6030742306	Consumer 21 Macedonia	2	3006341.655189	849326.8986162
5938092005120	1N6030740745	Consumer 21 Macedonia	2	3005964.17721116	849486.110792986
5938092005630	1N6030740746	Consumer 21 Macedonia	2	3005981.97164807	849241.468252035
5938082095950	1N6039999654	Consumer 21 Macedonia	2	3006051.996309	849505.0019234
5938092003580	1N6030740741	Consumer 21 Macedonia	2	3005196.003858	849301.0005316
5944012000430	1N6030741677	Consumer 21 Macedonia	2	3005670.002071	841624.9950233
594401200067A	1N6030744939	Consumer 21 Macedonia	2	3007618.99	841105
5944022000870	1N6030742325	Consumer 21 Macedonia	2	3007673.714486	834994.4025052
5944022000640	1N6030739515	Consumer 21 Macedonia	2	3005637.807709	835826.7462593
5944022000470	1N6030741204	Consumer 21 Macedonia	2	3007478.94161	837217.691314
5938092059520	1N6030742564	Consumer 21 Macedonia	2	3008385.003021	846963.9971395
5938092058320	1N6030739187	Consumer 21 Macedonia	2	3007677.837946	847061.4814866
5944002067800	1N6030742560	Consumer 21 Macedonia	2	3007637.470725	846169.2452737
5938092057320	1N6030741627	Consumer 21 Macedonia	2	3007064.876651	847014.8619217
5938092049910	1N6030739526	Consumer 21 Macedonia	2	3008216.57	847278.7
5938092036100	1N6030741633	Consumer 21 Macedonia	2	3006961	847881.9983817
5938092036370	1N6039999512	Consumer 21 Macedonia	2	3006748.001058	847826.9988433
5938092035700	1N6030741629	Consumer 21 Macedonia	2	3006449.00458487	847667.993362292
5938092045680	1N6030755483	Consumer 21 Macedonia	2	3006298.9945143	847179.006345017

Project No. 56822_____’s Response to Staff’s First Set of RFIs to Targeted Electric CO-OPs Page 101 of 162

5938092050750	1N6030742589	Consumer 21 Macedonia	2	3009219.00369	847171.0010622
5938093052010	1N6033887985	Consumer 21 Macedonia	2	3010010	847117.99
5938093051420	1N6030742593	Consumer 21 Macedonia	2	3009573.001085	846891.9966482
5944002079100	1N6030742585	Consumer 21 Macedonia	2	3008914.000773	846112.9955176
5944002069040	1N6030742561	Consumer 21 Macedonia	2	3008426.516275	846327.8622555
5944013023490	1N6030742312	Consumer 21 Macedonia	2	3011184.295194	843095.0997986
5944013024430	1N6030744731	Consumer 21 Macedonia	2	3011500.003353	843554.9998227
5944003083890	1N6041339829	Consumer 21 Macedonia	2	3011282.997689	845403.002389
5944003074960	1N6030744730	Consumer 21 Macedonia	2	3011546.99949	845818.9985327
5944003064450	1N6036545391	Consumer 21 Macedonia	2	3011557.00571017	846637.346816819
5944003086110	1N6030736466	Consumer 21 Macedonia	2	3012485.99845623	845736.000455032
5944003088570	1N6030744717	Consumer 21 Macedonia	2	3013745	845590.99
5944003065230	6S6037257461	Consumer 21 Macedonia	2	3011931.745211	846656.8151274
5944003064910	1N6030744724	Consumer 21 Macedonia	2	3011210.98952396	846242.997597316
5944013005930	1N6030744725	Consumer 21 Macedonia	2	3012324.99506921	844548.005370584
5944013003360	1N6030742310	Consumer 21 Macedonia	2	3011133.784955	844670.8869339
5944013034480	1N6030742356	Consumer 21 Macedonia	2	3011909	843112
5944013029350	1N6030744700	Consumer 21 Macedonia	2	3014529.054981	843235.1549627
5944004081400	1N6030744664	Consumer 21 Macedonia	2	3016002.002269	845293.0033122
5944014014460	1N6030744750	Consumer 21 Macedonia	2	3017587.03093026	843725.17323436
5944004084130	1N6030745212	Consumer 21 Macedonia	2	3017291.90114891	845431.022953288
5944003069920	1N6030739807	Consumer 21 Macedonia	2	3014281.57183966	845960.278220561
5944003078030	1N6029841262	Consumer 21 Macedonia	2	3013740	845897
5944003058830	1N6030744897	Consumer 21 Macedonia	2	3013755.004512	846469.0012937
5944003060830	1N6030744893	Consumer 21 Macedonia	2	3014906.99869863	846474.990867754
5944003060960	1N6030744883	Consumer 21 Macedonia	2	3015149.996456	846491.9972665
5944004051870	1N6030744864	Consumer 21 Macedonia	2	3015771.99824665	846584.992528916
5944003047950	1N6030744855	Consumer 21 Macedonia	2	3013235.498248	846957.2941649
5944003047560	1N6030744867	Consumer 21 Macedonia	2	3013306.00047769	847134.999927815
5944003056760	1N6030744877	Consumer 21 Macedonia	2	3012705	846541
5944003056100	1N6030744879	Consumer 21 Macedonia	2	3012952	846843
593809305716A	1N6030744886	Consumer 21 Macedonia	2	3013249	847293
5944003057190	1N6030744854	Consumer 21 Macedonia	2	3013502.651326	846819.7049416
5944003060390	1N6030744881	Consumer 21 Macedonia	2	3015267.998935	846776.9967005
5944004051170	1N6030744869	Consumer 21 Macedonia	2	3015741.99080562	846945.998539379

5944004062350	1N6030745206	Consumer 21 Macedonia	2	3016266.94801	846318.4228605
5944004052650	1N6030745205	Consumer 21 Macedonia	2	3016394.915201	846592.6372837
5944004083480	1N6030739812	Consumer 21 Macedonia	2	3017067.88	845284.66
5944014004630	1N6030742317	Consumer 21 Macedonia	2	3017406.001806	844214.0001347
5944014014250	1N6032057455	Consumer 21 Macedonia	2	3017502.99	843908.99
5944013015170	1N6030744727	Consumer 21 Macedonia	2	3012499.18543341	844240.268458712
5944013054300	1N6030739452	Consumer 21 Macedonia	2	3012466.628894	842342.3043105
5944013053290	1N6030739438	Consumer 21 Macedonia	2	3010954.004649	842085.0048563
5944013043820	1N6030739439	Consumer 21 Macedonia	2	3010762.79665	842509.8479222
5944013042280	1N6030739440	Consumer 21 Macedonia	2	3010651.493483	842844.6543071
5944012000280		Consumer21 Macedonia	2	3008332	842880
5944012000270	1N6030744710	Consumer 21 Macedonia	2	3007082.999159	842930.9955654
5944001000580	2J6029874080	Consumer 21 Macedonia	2	3002413.51994813	846078.474083879
5944002000440	1N6030741146	Consumer 21 Macedonia	2	3005383.104716	846587.8372509
5938092000520	1N6030741196	Consumer 21 Macedonia	2	3004359.66	846745.75
5938092000310	1N6030741147	Consumer 21 Macedonia	2	3003921.002691	847970.9998257
5938092000320	1N6030742280	Consumer 21 Macedonia	2	3004041.997659	848216.0023341
5938081000000	1N6030742284	Consumer 21 Macedonia	2	3003240	849958
5938092000010	1N6030748700	Consumer 21 Macedonia	2	3004006	849368
5938092000020	1N6030742602	Consumer 21 Macedonia	2	3004311.113302	849512.6620175
5938082073010	1N6030742618	Consumer 21 Macedonia	2	3004749.620896	851022.9369658
5938082053320	1N6030741605	Consumer 21 Macedonia	2	3004522.70907836	851852.701243056
5938082054930	1N6030739400	Consumer 21 Macedonia	2	3005331.624867	851531.3067522
5938082055070	1N6030739384	Consumer 21 Macedonia	2	3006178	852076.99
593808207732A	1N6030740277	Consumer 21 Macedonia	2	3007105.997015	850991.0331917
5938082065300	1N6039150123	Consumer 21 Macedonia	2	3006410.99559927	851503.487628653
5938082056030	1N6030739383	Consumer 21 Macedonia	2	3006511.99	852091.99
5938082054190	1N6030743892	Consumer 21 Macedonia	2	3005675.002942	852026.0032235
5938082054180	1N6030739397	Consumer 21 Macedonia	2	3005605.000791	852033.9965835
5938082096520	1N6030742552	Consumer 21 Macedonia	2	3006483.12546095	849854.816987817
5938082095490	1N6030736474	Consumer 21 Macedonia	2	3006209.435249	849908.6578154
5938082096580	1N6030742551	Consumer 21 Macedonia	2	3006909.09399039	849896.050299412
5938082098510	1N6030742549	Consumer 21 Macedonia	2	3007547.697309	849943.6708158
5938082099660	1N6030749954	Consumer 21 Macedonia	2	3008378.50190375	849941.704134965
5938093001050	1N6036768899	Consumer 21 Macedonia	2	3009582.84	849735.0018189

5938093011040	1N6030741598	Consumer 21 Macedonia	2	3009666.66864083	849253.959550231
5938093001600	1N6030741589	Consumer 21 Macedonia	2	3010006.87371	849440.3822356
5938082089150	1N6030740812	Consumer 21 Macedonia	2	3008462.998533	850614.0002846
5938082054990	1N6034916082	Consumer 21 Macedonia	2	3005579.59565193	851675.697848811
5944003066650	1N6031794455	Consumer 21 Macedonia	2	3012687.08908024	846081.401837156
5944003089580	1N6030744719	Consumer 21 Macedonia	2	3014692.834145	845178.5371243
5944014021130	1N6034616934	Consumer 21 Macedonia	2	3015616	843392.0625
5938092045770	1N6036545398	Consumer 21 Macedonia	2	3006155.6522229	847320.426783656
594401302715A	1N6030759994	Consumer 21 Macedonia	2	3013327.15593235	843366.33052881
5944022010590	6S6031722993	Consumer 21 Macedonia	2	3009523.22585644	838986.729963633
5944002090650	1N6030758972	Consumer 21 Macedonia	2	3009078.45020397	844950.775867143
5938073092510	1N6033669011	Consumer 21 Macedonia	2	3009784.63927848	855015.283978035
5938082075220	1N6033668990	Consumer 21 Macedonia	2	3005858.56880175	850996.548091994
593809205804A	1N6030753334	Consumer 21 Macedonia	2	3007958.03585139	846901.320452974
5938093002220		Consumer 21 Macedonia	2	3009963.99116632	849673.387239573
5938082085470	1N6035514698	Consumer 21 Macedonia	2	3006069.39585003	850431.38860834
5938082055630	1N6034616852	Consumer 21 Macedonia	2	3005790.47871658	851827.288384119
5938082091170	1N6039025029	Consumer 21 Macedonia	2	3009649.46240416	850194.662015904
5938082075470	1N6030758685	Consumer 21 Macedonia	2	3006067.55273308	850968.795795263
5938082075280	1N6030750705	Consumer 21 Macedonia	2	3006089.33891831	851044.822699094
5938093012530	1N6036545534	Consumer 21 Macedonia	2	3010048.0684537	848989.636762978
5938082099450	1N6030736870	Consumer 21 Macedonia	2	3008340.44302731	850034.07567634
7005063000120	1N6033305311	Consumer 19 BellvilleN	2	2854050.67441423	769372.161319865
7005053000830	1N6030756345	Consumer 19 BellvilleN	2	2854903.97302535	770772.334930984
7005053000740	1N6030754428	Consumer 19 BellvilleN	2	2855333.66052535	771147.334930986
7005063000730	1N6030756375	Consumer 19 BellvilleN	2	2854442.791232	766486.2162742
7005055000310	1N6029841073	Consumer 19 BellvilleN	2	2865564.838661	773548.5606919
700505400019A	1N6030754514	Consumer 19 BellvilleN	2	2864410.30078561	774313.488206679
7005044087370	1N6030757473	Consumer 19 BellvilleN	2	2863279.59	775599.1
7005054000460	1N6030754501	Consumer 19 BellvilleN	2	2862403.48	773057.3
7005054000140	1N6030736231	Consumer 19 BellvilleN	2	2861158.338305	774526.7832655
7005044039100	1N6030753993	Consumer 19 BellvilleN	2	2864563.579947	778539.5001823
7005044029770	1N6030756287	Consumer 19 BellvilleN	2	2864439.98026621	778642.672957711
7005044068580	1N6030756393	Consumer 19 BellvilleN	2	2863861.20523819	776855.631258039
7005035022370	1N6030755748	Consumer 19 BellvilleN	2	2865769.974789	784109.3055468

7005035021280	1N6030755768	Consumer 19 BellvilleN	2	2865300.997531	784101.9950367
7005044041310	1N6032024117	Consumer 19 BellvilleN	2	2864935.41683609	778023.939054965
700406000043A	6S6037257484	Consumer 19 BellvilleN	2	2843291.140254	771870.6981985
7005052000270	1N6030756331	Consumer 19 BellvilleN	2	2850787.003947	773583.0044416
7005062000190	1N6030756348	Consumer 19 BellvilleN	2	2852133.352881	769247.3497566
7005053000820	1N6032595203	Consumer 19 BellvilleN	2	2854335.83066423	771031.413345337
7005054000580	1N6030754559	Consumer 19 BellvilleN	2	2864262.884381	773023.3631757
7005054000600	1N6030754652	Consumer 19 BellvilleN	2	2865170.000821	772504.0012641
7005055000830	1N6030754666	Consumer 19 BellvilleN	2	2866697.46622564	771123.813157258
7005065000240	1N6030754660	Consumer 19 BellvilleN	2	2867109.79261453	769135.757601692
7005055000740	1N6030754560	Consumer 19 BellvilleN	2	2867070.2092812	771415.618712815
7005054000590	1N6030754557	Consumer 19 BellvilleN	2	2864526.856684	773151.5136316
7005055000220	1N6030754689	Consumer 19 BellvilleN	2	2865677.749892	773795.9933424
7005055000020	1N6030751423	Consumer 19 BellvilleN	2	2865770.205753	774935.4789409
700505400010E	1N6030754229	Consumer 19 BellvilleN	2	2864515.04343361	775137.322161891
700402800056C	1N6033887685	Consumer 19 BellvilleN	2	2833417.342345	786900.5647577
700402800056B	1N6030757418	Consumer 19 BellvilleN	2	2833362.60797716	787228.075680079
7004028000470		Consumer 19 BellvilleN	2	2833800.05840259	787078.093491312
700401700006A	1N6030737151	Consumer 19 BellvilleN	2	2826943.895669	793793.0000665
7004028000220	1N6030758727	Consumer 19 BellvilleN	2	2830488.51	788394.32
700402800031B	1N6030756291	Consumer 19 BellvilleN	2	2830119.50284703	787854.829602423
700402800021A	1N6030759952	Consumer 19 BellvilleN	2	2829849.59359679	788155.099879735
7004026000270	1N6030756414	Consumer 19 BellvilleN	2	2821896.74860546	788179.654121552
700402600018B	1N6030756417	Consumer 19 BellvilleN	2	2822451.0132637	788366.273468162
7004027000280	1N6030756301	Consumer 19 BellvilleN	2	2828012.64520814	788476.299509829
7004027000660	6S6030760064	Consumer 19 BellvilleN	2	2828133.81527588	785306.707938301
700402700010B	1N6030754423	Consumer 19 BellvilleN	2	2829780.624646	788753.7690332
700402800021C	1N6030749869	Consumer 19 BellvilleN	2	2830432.69729147	787896.149046867
700402800043B	1N6030759920	Consumer 19 BellvilleN	2	2831159.188026	787080.3852315
7004038000650	1N6030759927	Consumer 19 BellvilleN	2	2833047.6857174	781429.829602422
7004038000540	1N6030759775	Consumer 19 BellvilleN	2	2831937.61627295	782069.412935755
700402800078B	1N6030744265	Consumer 19 BellvilleN	2	2834366.03	785614.94
700402800078A	1N6030759771	Consumer 19 BellvilleN	2	2834507.19	785700.16
7004028000490	1N6030756399	Consumer 19 BellvilleN	2	2835451.8	787033.94
7004059000110	1N6030737197	Consumer 19 BellvilleN	2	2836339.98707681	773424.638564319

7004058000100	1N6030750652	Consumer 19 BellvilleN	2	2835569.58777125	774303.110786541
700403900052A	1N6030754634	Consumer 19 BellvilleN	2	2836701.29	781870.73
700403900060B	1N6030759768	Consumer 19 BellvilleN	2	2841750.7325924	781894.129370942
7004040000520	1N6030754408	Consumer 19 BellvilleN	2	2842418.09370351	782189.615482053
7005031000540	1N6030754438	Consumer 19 BellvilleN	2	2844162.20210272	781798.88678713
7005032000250	1N6030754429	Consumer 19 BellvilleN	2	2849864.22676666	783470.993959468
7005033033810	1N6030755661	Consumer 19 BellvilleN	2	2855158.307411	783460.9998685
7005033023770	1N6030755665	Consumer 19 BellvilleN	2	2855372.882933	784070.7546562
7005033042070	1N6031961661	Consumer 19 BellvilleN	2	2854892.12148129	783311.316870942
7005033032440	1N6030755658	Consumer 19 BellvilleN	2	2854588.64925907	783591.872426497
7005033032160	1N6030747971	Consumer 19 BellvilleN	2	2854758.09370351	783781.108537608
7005033000420	1N6030754260	Consumer 19 BellvilleN	2	2854898.37148129	782891.872426497
700503300075B	1N6030759923	Consumer 19 BellvilleN	2	2855350.45481462	781052.636315386
7005043000360	2J6029874415	Consumer 19 BellvilleN	2	2856700.693875	778385.5476675
7005033000750	1N6030759725	Consumer 19 BellvilleN	2	2855871.28814796	781180.414093164
7005034056550	1N6030759709	Consumer 19 BellvilleN	2	2862177.6394211	782066.930296868
7005034056680	1N6030740301	Consumer 19 BellvilleN	2	2862485.406773	782025.3783583
7005034066760	1N6030759712	Consumer 19 BellvilleN	2	2862443.180543	781639.5983205
7005052000370	1N6030756336	Consumer 19 BellvilleN	2	2851056.31677533	773118.218900903
700505400008B	1N6032746799	Consumer 19 BellvilleN	2	2863589.73088337	774724.141240146
7004059000390	6S6030748160	Consumer 19 BellvilleN	2	2835039.64692621	772601.295201433
7005031000390	2J6029874300	Consumer 19 BellvilleN	2	2845577.5	782991.3125
700404000072A	1N6030750010	Consumer 19 BellvilleN	2	2842763.62622509	780892.665630473
584803800021B	1N6031794565	Consumer 08 Hempstead	2	2934734.21320592	831104.301711507
5848037000380	1N6033668968	Consumer 08 Hempstead	2	2932881.763836	830712.1896075
5848037000500	1N6031786121	Consumer 08 Hempstead	2	2934184.349501	830161.5226706
584803800063A	1N6030747734	Consumer 08 Hempstead	2	2936027.87	829338.73
5848058000550	1N6031794537	Consumer 08 Hempstead	2	2937337.68	819786.17
5848088086560	1N6030745470	Consumer 08 Hempstead	2	2938382.490277	803217.5028596
5848068000960	1N6030745469	Consumer 08 Hempstead	2	2938190.247961	812762.7796985
5848058000440	1N6030736682	Consumer 08 Hempstead	2	2936868.130154	820201.7660164
584805900021A	1N6030747882	Consumer 08 Hempstead	2	2940485.416758	821311.6681495
5848059000220	1N6030746377	Consumer 08 Hempstead	2	2941382.21	821058.16
5848059000210	1N6030747881	Consumer 08 Hempstead	2	2940462.81	820953.1
5848058000370	1N6030746372	Consumer 08 Hempstead	2	2939315.705012	820505.2526058

584804800032A	1N6030747896	Consumer 08 Hempstead	2	2935132.02	825599.05
584804800045A	1N6030747417	Consumer 08 Hempstead	2	2937177.71	825438.39
584804800025E	1N6030747900	Consumer 08 Hempstead	2	2937035.33	826125.44
584804800025A	1N6030746951	Consumer 08 Hempstead	2	2937098.832984	826345.8681861
584803800094B	1N6030747656	Consumer 08 Hempstead	2	2936516.6937294	827509.863024371
5848038000760	1N6030746943	Consumer 08 Hempstead	2	2937853.91	828728.75
5848038000630	1N6030747759	Consumer 08 Hempstead	2	2936164.342926	828803.9569232
5848038079280	1N6030745432	Consumer 08 Hempstead	2	2939324.612186	828937.2431882
5848038089320	1N6031961573	Consumer 08 Hempstead	2	2939306.38	828290.88
5848038089820	1N6030745429	Consumer 08 Hempstead	2	2939079.78039	828055.302443
5848038069930	1N6030746949	Consumer 08 Hempstead	2	2939005.4228811	828953.401561179
5848038069730	1N6030746947	Consumer 08 Hempstead	2	2939088.98081944	829083.648238186
5848039095440	1N6030741265	Consumer 08 Hempstead	2	2943062.19	828016.07
5848039093190	1N6030745446	Consumer 08 Hempstead	2	2941920.14	828018.01
5848039093520	1N6030744055	Consumer 08 Hempstead	2	2941424.7	827767.78
5848039093540	1N6030744051	Consumer 08 Hempstead	2	2941855.89	827719.21
5848039093000	1N6039999549	Consumer 08 Hempstead	2	2941907.42	827611.79
5848049013510	1N6030744083	Consumer 08 Hempstead	2	2941389.02	826746.14
5848049014110	1N6030736706	Consumer 08 Hempstead	2	2941963.592548	826959.0630829
5848049014220	1N6030747405	Consumer 08 Hempstead	2	2942010.970871	826912.6275578
5848049025410	1N6030747406	Consumer 08 Hempstead	2	2942490.755963	826357.7979746
5848049012200	1N6030744084	Consumer 08 Hempstead	2	2941315.88	826950.96
5848039000510	1N6030742904	Consumer 08 Hempstead	2	2941023.46083024	829492.495292081
5848039000520	1N6030742903	Consumer 08 Hempstead	2	2940990.9064	829554.6197852
5848039092230	1N6030746900	Consumer 08 Hempstead	2	2940903.4012	827826.467409
5848048010600	1N6034616871	Consumer 08 Hempstead	2	2940139.05	827261.28
5848049001410	1N6030746960	Consumer 08 Hempstead	2	2940190.767049	827320.0237864
5848049031240	1N6030747352	Consumer 08 Hempstead	2	2940406.69823	825766.560468
5848049033810	1N6030744060	Consumer 08 Hempstead	2	2941459.1	825558.83
584804800038A	1N6030747407	Consumer 08 Hempstead	2	2938735.54344519	825836.041658617
5848038080040	1N6030745431	Consumer 08 Hempstead	2	2939656.43	828879.82
5848038000660	1N6030746944	Consumer 08 Hempstead	2	2937631.827415	829287.7660817
5848037000180	1N6035514664	Consumer 08 Hempstead	2	2932674.588573	831827.3649983
584803700018D	1N6030755553	Consumer 08 Hempstead	2	2932826.261574	831747.0096383
584803700019A	1N6030747770	Consumer 08 Hempstead	2	2932844.70382013	831998.475848239

5848027000830	1N6032908381	Consumer08 Hempstead	2	2929974.06557937	833120.182315941
584805700096A	1N6030745005	Consumer 08 Hempstead	2	2931919.72	817535.21
584804800005C	1N6030737562	Consumer 08 Hempstead	2	2937145.37590547	827042.509257315
5938054084630	1N6030737564	Consumer 21 Macedonia	3	3016794.79213751	865637.549285873
5938084084940	1N6029841070	Consumer 21 Macedonia	3	3017233.24636183	850487.170003621
5938083064520	1N6030740303	Consumer 21 Macedonia	3	3012913.524819	851601.1913459
5938084014070	1N6032777678	Consumer 21 Macedonia	3	3017348.301423	854471.7290431
5938084064460	1N6031961507	Consumer 21 Macedonia	3	3017344.6914273	851770.273435101
593806406488A	1N6032746852	Consumer 21 Macedonia	3	3017110.04181505	861515.982885778
5938073001570	1N6030739582	Consumer 21 Macedonia	3	3009386.522825	859477.4113835
5938063099670	1N6038720603	Consumer 21 Macedonia	3	3014190.66	859988.29
5938064094890	1N6030743807	Consumer 21 Macedonia	3	3017255.9446965	859885.294489964
5938064085750	1N6030743886	Consumer 21 Macedonia	3	3017586.89685114	860517.064507602
593806409548A	1N6030745363	Consumer 21 Macedonia	3	3017823.002141	860161.0043319
5938064095460	1N6032058377	Consumer 21 Macedonia	3	3017667.99	860209
5938064076310	1N6030743882	Consumer 21 Macedonia	3	3017898.9970808	861198.998262903
5938064065670	1N6030743874	Consumer 21 Macedonia	3	3017758.302118	861663.6053785
5938064065460	1N6030747607	Consumer 21 Macedonia	3	3017524	861735.99
5938064064880	1N6030743876	Consumer 21 Macedonia	3	3017110.04181505	861515.982885778
5938064062200	1N6030743857	Consumer 21 Macedonia	3	3016081.99	861795.99
5938064044990	1N6030743846	Consumer 21 Macedonia	3	3017238.00066	862430.0039128
5938064031810	1N6030743859	Consumer 21 Macedonia	3	3014837	862895.99
5938063060710	1N6030742664	Consumer 21 Macedonia	3	3014325.997529	861914.0003923
5938063060440	1N6030742698	Consumer 21 Macedonia	3	3014493.004526	862039.996231
5938064082140	1N6030745336	Consumer 21 Macedonia	3	3015779.955566	860914.0672103
5938064082650	1N6038735409	Consumer 21 Macedonia	3	3015755.99	860638.99
5938064092340	1N6030743532	Consumer 21 Macedonia	3	3015739.00528555	860050.990740405
5938064092440	1N6030743866	Consumer 21 Macedonia	3	3015746.99	859993.99
5938063100210	1N6030739676	Consumer 21 Macedonia	3	3014397.99802	860160.000141
5938064061880	1N6030739718	Consumer 21 Macedonia	3	3015379.996352	861359.9982862
5938054084280	1N6030744124	Consumer 21 Macedonia	3	3016935.36982927	865849.690069303
5938054086230	1N6030743800	Consumer 21 Macedonia	3	3017896.91	865954.61
5938054074700	1N6030745094	Consumer 21 Macedonia	3	3017018.02669016	866196.774906925
5938054014780	1N6030743810	Consumer 21 Macedonia	3	3016805.13019123	869173.90189196
5938054004880	1N6030754789	Consumer 21 Macedonia	3	3016754.09	869530.22

5938054034090		Consumer21 Macedonia	3	3016917.68383	868483.3171785
5938054056390	1N6030743819	Consumer 21 Macedonia	3	3018149.11133103	867367.068832999
5938054056360	1N6030743817	Consumer 21 Macedonia	3	3017941.998769	867438.0046075
5938054046140	1N6030745428	Consumer 21 Macedonia	3	3017820.65095574	867884.719694017
5938054046250	1N6030745426	Consumer 21 Macedonia	3	3017960.91042373	867860.200845825
5938064023420	1N6030743816	Consumer 21 Macedonia	3	3016163.28	863742.92
5938064022780	1N6030743813	Consumer 21 Macedonia	3	3015931.668735	863585.9381591
5938053100170	1N6030744211	Consumer 21 Macedonia	3	3014545.995683	865339.0045128
5938063010640	1N6029841240	Consumer 21 Macedonia	3	3014449.000879	864546.0049602
5938064031170	1N6030744212	Consumer 21 Macedonia	3	3015235.888047	863259.5597817
5938064022530	1N6030743855	Consumer 21 Macedonia	3	3015628.563738	863533.0273378
5938064032540	1N6030745348	Consumer 21 Macedonia	3	3015653.999895	863149.0046341
5938064033710	1N6030745347	Consumer 21 Macedonia	3	3015976.997915	862945.0032423
5938064033750	1N6030745354	Consumer 21 Macedonia	3	3016272.712066	863051.2265612
5938064034710	1N6030745356	Consumer 21 Macedonia	3	3016645.15731727	862992.178471283
5938064082300	1N6030743859	Consumer 21 Macedonia	3	3016158.003334	860740.0007508
593806409234A	1N6030744977	Consumer 21 Macedonia	3	3015838.58635929	860267.88059466
5938064083690	1N6030738574	Consumer 21 Macedonia	3	3016608.01957948	860573.874081848
5938074002770	1N6030744945	Consumer21 Macedonia	3	3015864.83981934	859454.919990044
593807403341A	1N6030744920	Consumer 21 Macedonia	3	3016037.58	858135.7
5938073030050	1N6030744916	Consumer 21 Macedonia	3	3014697.04567609	858889.212099456
5938073010600	1N6030745162	Consumer 21 Macedonia	3	3014741.38	859455.32
5938074003910	1N6030741682	Consumer 21 Macedonia	3	3016034.99	859396
5938074033100	1N6030741637	Consumer 21 Macedonia	3	3016615.392228	858436.9390129
5938074013870	1N6030740738	Consumer 21 Macedonia	3	3016475.849854	859018.8275017
5938074025690	1N6030739448	Consumer 21 Macedonia	3	3017743.500343	858565.997634
5938074056560	1N6030740728	Consumer 21 Macedonia	3	3018254.13926562	857300.643373377
5938074056260	1N6030740726	Consumer 21 Macedonia	3	3018289.730011	857479.4328986
5938074066360	1N6030740725	Consumer 21 Macedonia	3	3018319.996327	856883.0037248
5938074066860	1N6030739507	Consumer 21 Macedonia	3	3018233	856666
5938083042370	1N6030740313	Consumer 21 Macedonia	3	3010228.054926	852631.2994034
5938093009850	1N6030747453	Consumer 21 Macedonia	3	3014308.58	849615.15
5938093018290	1N6030747533	Consumer 21 Macedonia	3	3014054.022452	849279.6012224
5938093028480	6S6030748054	Consumer21 Macedonia	3	3013922.972448	848748.5525331
5938083097770	1N6030747497	Consumer 21 Macedonia	3	3013257.196932	849992.7675943

5938083089640	1N6030740308	Consumer 21 Macedonia	3	3014268.47501561	850567.721048778
5938093019140	1N6030747534	Consumer 21 Macedonia	3	3014327.995869	849326.9990353
5938094021050	1N6038720600	Consumer 21 Macedonia	3	3015570.956441	848918.9190545
5938094022320	1N6030743020	Consumer 21 Macedonia	3	3016005.33984231	848781.642630717
5938083100430	1N6030747503	Consumer 21 Macedonia	3	3014833.003499	850195.00161
5938084071390	1N6030744413	Consumer 21 Macedonia	3	3015760.805645	851266.0315114
5938083078880	1N6030740268	Consumer 21 Macedonia	3	3013936.512027	850874.5476689
5938083077640	1N6030744876	Consumer 21 Macedonia	3	3013039.08	851061.47
5938083087440	2J6029874097	Consumer 21 Macedonia	3	3013042.120569	850682.8432229
5938094003620	1N6030739486	Consumer 21 Macedonia	3	3016614.438247	849655.5000213
5938094013470	1N6030743008	Consumer 21 Macedonia	3	3016922.996	849278.9987078
5938094004910	1N6030742934	Consumer 21 Macedonia	3	3017107.747052	849480.8310472
5938094035570	1N6030741083	Consumer 21 Macedonia	3	3018092.00974732	848221.864980977
5938094054020	1N6030741056	Consumer 21 Macedonia	3	3017271.720137	847433.0622644
5938094037170	1N6030744437	Consumer 21 Macedonia	3	3019292.304215	848423.5384781
5944004067140	1N6030747517	Consumer 21 Macedonia	3	3019134.55209192	846462.896522784
5944004056900	1N6030747518	Consumer 21 Macedonia	3	3018957.999006	846632.001569
5944004066060	1N6030747519	Consumer 21 Macedonia	3	3018723.468954	846541.9752225
5944004066470	1N6030747520	Consumer 21 Macedonia	3	3018799.688302	846351.109276
5944004077380	1N6030744388	Consumer 21 Macedonia	3	3019451.41132086	845891.650290788
5944004077870	1N6030744386	Consumer 21 Macedonia	3	3019370.297216	845669.7330791
5944004087160	1N6030739490	Consumer 21 Macedonia	3	3019329.891083	845601.1493476
5944004075000	1N6030744428	Consumer 21 Macedonia	3	3018364.170687	845590.3241691
5944004076320	1N6030744426	Consumer 21 Macedonia	3	3018446.72968248	845900.087401815
5938084096340	1N6030743301	Consumer 21 Macedonia	3	3018440.348612	850308.6258162
5938084096550	1N6034916052	Consumer 21 Macedonia	3	3018539.56116866	850228.944485267
5938094007640	1N6030743256	Consumer 21 Macedonia	3	3019078.662591	849693.267643
5938084077190	1N6030742948	Consumer 21 Macedonia	3	3019365.044042	851407.6870803
5938084067530	1N6030742953	Consumer 21 Macedonia	3	3018986.849412	851751.0657829
5938084078130	1N6030742947	Consumer 21 Macedonia	3	3019589.002474	851465.9960556
5938084089710	1N6030742991	Consumer 21 Macedonia	3	3020112.497259	850682.9982449
5938084098290	1N6030742994	Consumer 21 Macedonia	3	3019954.869405	850449.2225913
5938084098420	1N6030742993	Consumer 21 Macedonia	3	3019595.92135	850325.8878587
5938084098320	1N6030742995	Consumer 21 Macedonia	3	3019554.789688	850357.7608795
5938084076790	1N6030740253	Consumer 21 Macedonia	3	3018750.88730013	851087.716643872

Project No. 56822_____’s Response to Staff’s First Set of RFIs to Targeted Electric CO-OPs Page 110 of 162

5938084087340	1N6030740340	Consumer 21 Macedonia	3	3019104.74143	850841.5901219
5938084087060	1N6030740338	Consumer 21 Macedonia	3	3019228.54133017	851056.172991026
5938084087170	1N6030740337	Consumer 21 Macedonia	3	3019274.40429561	850965.367113169
5938084087890	1N6030740334	Consumer 21 Macedonia	3	3019314.767967	850606.9709479
5938084087770	1N6030740333	Consumer 21 Macedonia	3	3019267.902375	850662.562959
5938094024350	1N6030740299	Consumer 21 Macedonia	3	3017452.927649	848882.6847069
5938094014660	1N6030743299	Consumer 21 Macedonia	3	3017317.522542	849266.8379554
5938094004450	1N6030744422	Consumer 21 Macedonia	3	3017393.11361733	849731.345019515
5938094005730	1N6030747514	Consumer 21 Macedonia	3	3017834.389666	849613.4043366
5938094026140	1N6030744432	Consumer 21 Macedonia	3	3018578.802695	848895.564711
5938094016710	1N6030744430	Consumer 21 Macedonia	3	3018326.001388	849117.9967725
5938094015970	1N6030744381	Consumer 21 Macedonia	3	3018140.999289	848964.0040901
5938094015050	1N6030747516	Consumer 21 Macedonia	3	3017967.756894	849459.2378036
5938084093070	1N6030742580	Consumer 21 Macedonia	3	3016898.995837	850416.9981037
5938084095710	1N6030741040	Consumer 21 Macedonia	3	3017676.32138571	850126.107312466
5938084095430	1N6030743228	Consumer 21 Macedonia	3	3017800.076461	850280.8298107
5938094005460	1N6030743288	Consumer 21 Macedonia	3	3018019.853693	849763.0287884
5938094006410	1N6030743558	Consumer 21 Macedonia	3	3018310.486638	849782.2188775
5938084094380	1N6030741039	Consumer 21 Macedonia	3	3017521.815149	850288.7127096
5938084096220	1N6030743304	Consumer 21 Macedonia	3	3018362.74704531	850399.716969126
5938084085950	1N6030743221	Consumer 21 Macedonia	3	3017835.649926	850592.1886295
5938084075980	1N6030740324	Consumer 21 Macedonia	3	3018120.950617	851001.4705014
5938084086830	1N6030740323	Consumer 21 Macedonia	3	3018344.20254789	850747.25856473
5938084096170	1N6030745076	Consumer 21 Macedonia	3	3018703.296013	850463.0703846
5938084086800	1N6030740276	Consumer 21 Macedonia	3	3018867.159892	850631.9150512
5938084086790	1N6030740273	Consumer 21 Macedonia	3	3018767.9079439	850634.822686888
5938084086850	1N6030740284	Consumer 21 Macedonia	3	3018521.919043	850629.1936937
5938084086630	1N6038560616	Consumer 21 Macedonia	3	3018477.4133	850637.9201131
5938084075010	1N6030742939	Consumer 21 Macedonia	3	3017676.832106	851479.0505379
5938084065930	1N6030742940	Consumer 21 Macedonia	3	3017766.63317494	851464.746962305
5938084075910	1N6030742988	Consumer 21 Macedonia	3	3017681.381091	851020.3059855
5938084084990	1N6030743238	Consumer 21 Macedonia	3	3017597.842446	850522.0364772
5938084084930	1N6030742581	Consumer 21 Macedonia	3	3017202.151043	850527.9310781
5938084083300	1N6030739492	Consumer 21 Macedonia	3	3017004.30714439	850878.958089265
5938084073910	1N6030743261	Consumer 21 Macedonia	3	3016488.080899	850965.647872

5938084064790	1N6030743310	Consumer 21 Macedonia	3	3017527.338199	851586.4085926
5938084064750	1N6030743309	Consumer 21 Macedonia	3	3017310.824588	851626.0540513
5938084064980	1N6030743315	Consumer 21 Macedonia	3	3017500.325462	851538.8199834
5938084064360	1N6030743316	Consumer 21 Macedonia	3	3017342.28172046	851794.719917635
5938084065210	1N6030740247	Consumer 21 Macedonia	3	3017658.61705544	851890.408388129
5938084064400	1N6034616915	Consumer 21 Macedonia	3	3017628.831778	851816.0570213
5938084065230	1N6030740288	Consumer 21 Macedonia	3	3017819.889149	851890.7487443
5938084055510	1N6030751877	Consumer 21 Macedonia	3	3017662.79910806	852208.620880075
5938083060370	1N6030744404	Consumer 21 Macedonia	3	3015001.396279	852267.5111474
5938083058980	1N6030744453	Consumer 21 Macedonia	3	3013884.93	851934.63
5938083060930	1N6030744403	Consumer 21 Macedonia	3	3014717.822797	851902.4977784
5938083059990	1N6030744402	Consumer 21 Macedonia	3	3014607.753426	851897.1253568
5938083040670	1N6030739443	Consumer 21 Macedonia	3	3014963.08	853036.65
5938083040440	1N6031794489	Consumer 21 Macedonia	3	3014762.45916246	853159.090421946
5938083028450	1N6030743023	Consumer 21 Macedonia	3	3013725.12481	853600.8168967
5938083017850	1N6030742605	Consumer 21 Macedonia	3	3013033.995409	853973.983041
5938083026100	1N6030742607	Consumer 21 Macedonia	3	3012758.867172	853851.0901523
5938083057820	1N6031846215	Consumer 21 Macedonia	3	3012903.092215	851899.4676322
5938083046150	1N6030743601	Consumer 21 Macedonia	3	3012449.5	852812.49
5938073100820	1N6030741667	Consumer 21 Macedonia	3	3014671.66	855005.31
5938083020670	1N6030740808	Consumer 21 Macedonia	3	3014974.00195	854094.9980925
5938083030580	1N6030743015	Consumer 21 Macedonia	3	3015051.977378	853674.0111199
5938084002940	1N6030747457	Consumer 21 Macedonia	3	3015921.81233819	854379.998912678
5938084001170	2J6029874067	Consumer 21 Macedonia	3	3015539.509574	854859.7861556
5938084012450	1N6030747458	Consumer 21 Macedonia	3	3016055.395102	854209.1143523
5938084044280	1N6030744460	Consumer 21 Macedonia	3	3017497.16627118	852894.758522595
5938084023150	1N6030739409	Consumer 21 Macedonia	3	3016665.591734	853841.5704221
5938074075190	1N6030740737	Consumer 21 Macedonia	3	3017917.325797	856470.9339678
5938074046470	1N6030741664	Consumer 21 Macedonia	3	3018216.735371	857819.7933797
5938074046030	1N6030741662	Consumer 21 Macedonia	3	3018235.122107	857982.1710566
5938064061250	1N6033305331	Consumer 21 Macedonia	3	3015190.4433369	861941.978677322
5938084054970	1N6030740245	Consumer 21 Macedonia	3	3017417.612245	851992.370639
5938084086140	1N6030745111	Consumer 21 Macedonia	3	3018488.01273505	850949.976315551
5938054037950	1N6030752487	Consumer 21 Macedonia	3	3018626.20976356	868052.601569586
5938064041130	1N6033887805	Consumer 21 Macedonia	3	3015067.37240378	862855.018531987

5938083066880	1N6032057418	Consumer 21 Macedonia	3	3012680.12572682	851448.142614295
593809400508A	1N6032298752	Consumer 21 Macedonia	3	3018137.90403804	849990.795963602
5938084075680	1N6033622270	Consumer 21 Macedonia	3	3018146.24143042	851239.653481155
5938084067360	1N6030741362	Consumer 21 Macedonia	3	3019149	851845.125
5938064002470	1N6035514679	Consumer 21 Macedonia	3	3015863.57638543	864724.006998164
5938084076820	1N6033887797	Consumer 21 Macedonia	3	3018353.51257275	851073.145221139
5938093020180	1N6032746783	Consumer 21 Macedonia	3	3015147.52322591	849372.369980335
5938094033370	2J6029874637	Consumer 21 Macedonia	3	3016889.87956584	848341.333344244
5938094022710	1N6037359692	Consumer 21 Macedonia	3	3015913.63455079	848575.704379353
5938054007850	1N6038720601	Consumer 21 Macedonia	3	3018589.00157604	869582.164136684
5938094024140	1N6038720431	Consumer 21 Macedonia	3	3017349.28978422	848903.39376305
5938054064710	1N6039149986	Consumer 21 Macedonia	3	3016619.51004786	866566.646055483
7005036022140	1N6030757122	Consumer 19 BellvilleN	3	2871763.247477	784266.7325623
7005036023240	1N6030757123	Consumer 19 BellvilleN	3	2872277.985717	784255.1441987
7005036024140	1N6030757098	Consumer 19 BellvilleN	3	2872779.967561	784291.07608
7005036006360	1N6030757138	Consumer 19 BellvilleN	3	2874017.997589	785350.0035513
5847089000740	1N6030757652	Consumer 19 BellvilleN	3	2890337.496377	802926.4782799
584708900030A	1N6030757944	Consumer 19 BellvilleN	3	2893732.58565	805036.976361
5847089000470	1N6030742161	Consumer 19 BellvilleN	3	2891592.875654	804436.9823093
7005018000720	1N6030759580	Consumer 19 BellvilleN	3	2883187.415796	791787.4801075
7005028000920	1N6030758641	Consumer 19 BellvilleN	3	2883588.09	786043.02
700501900091A	1N6030758701	Consumer 19 BellvilleN	3	2888518.74	790840.37
7005018000450	1N6030754929	Consumer 19 BellvilleN	3	2884653.57209362	793387.964554065
700501800027A	1N6030754958	Consumer 19 BellvilleN	3	2886245.749642	794633.6397607
700500800088B	1N6030758705	Consumer 19 BellvilleN	3	2886363.000224	796585.369536
5847098000270	1N6030758710	Consumer 19 BellvilleN	3	2886104.51978033	799517.07927646
700503600066A	1N6030755052	Consumer 19 BellvilleN	3	2874273.995988	781796.0010612
700503600068A	1N6030757776	Consumer 19 BellvilleN	3	2874909.096555	782168.4554851
700503600058D	1N6030758695	Consumer 19 BellvilleN	3	2875300.75111	782760.325632
7005036000370	1N6030736966	Consumer 19 BellvilleN	3	2874799.864133	783588.0658071
7005036000280	1N6030758693	Consumer 19 BellvilleN	3	2875106.6	784460.44
7005026095120	1N6030754804	Consumer 19 BellvilleN	3	2873288.05196093	785913.420327417
7005026095850	1N6030741780	Consumer 19 BellvilleN	3	2873454.53977	785476.8667599
7005026077680	1N6030757170	Consumer 19 BellvilleN	3	2874798.997059	786778.0032521
7005026077960	6S6030748133	Consumer 19 BellvilleN	3	2874728.010801	786645.9722258

7005026068390	1N6030757169	Consumer 19 BellvilleN	3	2875415.61	787346.69
7005026076380	1N6030757133	Consumer 19 BellvilleN	3	2874138.62322374	786848.528829996
7005026075150	1N6030737727	Consumer 19 BellvilleN	3	2873126.245898	787083.7291873
7005035026090	1N6030755762	Consumer 19 BellvilleN	3	2868403.62623	784443.3195411
700503503604A	1N6030754865	Consumer 19 BellvilleN	3	2868092.64715484	783675.612815831
7005035033500	1N6030736538	Consumer 19 BellvilleN	3	2867052.837097	783581.987847
700503503622A	1N6032024120	Consumer 19 BellvilleN	3	2867801.334464	783611.1929434
7005035018080	2J6029874766	Consumer 19 BellvilleN	3	2869417.04300726	784711.550647153
700508800034A	1N6030748812	Consumer 16 Quanex	3	2885218.56176883	758939.432019592
7005098000580	1N6030757060	Consumer 16 Quanex	3	2888006.016036	753043.0216281
7011008000690	1N6030754708	Consumer 16 Quanex	3	2888461.00968549	751885.728315889
7005098000450	1N6030757059	Consumer 16 Quanex	3	2886086.484948	753842.3877513
7005098000440	1N6030754743	Consumer 16 Quanex	3	2885912.43558679	753709.143502207
700509800035B	1N6030754744	Consumer 16 Quanex	3	2886001.79189449	753914.775511548
7005055000280	1N6030754650	Consumer 16 Quanex	3	2869697.08028735	774107.918709407
7005084000740	1N6030759558	Consumer 16 Quanex	3	2861335.72264845	756589.360983708
7005083000380	1N6030759636	Consumer 16 Quanex	3	2857775.459994	758244.881386
7005083000090	1N6030759549	Consumer 16 Quanex	3	2858189.88931512	759755.593622596
701100500058A	1N6030759545	Consumer 16 Quanex	3	2870007.69711655	752140.727038204
701100600066A	1N6030756806	Consumer 16 Quanex	3	2874854.46	751766.9
701101700012B	1N6030754747	Consumer 16 Quanex	3	2878641.37	749456.06
701101700034A	1N6030754635	Consumer 16 Quanex	3	2879787.195109	748146.8074701
7011017000890	1N6030754762	Consumer 16 Quanex	3	2882616.633659	746063.5530896
701101700079A	1N6030754759	Consumer 16 Quanex	3	2882741.203547	746209.5724958
7011006000810	1N6030754756	Consumer 16 Quanex	3	2872033.053502	750629.5892626
7011006000920	1N6030754755	Consumer 16 Quanex	3	2872208.65	750249.83
7005095000550	1N6030759347	Consumer 16 Quanex	3	2868136.1265113	752708.602303153
701101200092C	1N6030755021	Consumer 16 Quanex	3	2848921.49	744790.71
7004080000540	1N6030757502	Consumer 16 Quanex	3	2844254.62803039	762145.112719828
7004080000230	1N6030757503	Consumer 16 Quanex	3	2844034.83636373	763276.362719828
700408000034C	1N6030759329	Consumer 16 Quanex	3	2844255.43126383	762938.462652496
7004080000640	1N6030759342	Consumer 16 Quanex	3	2844765.04469706	761747.716886494
7004080000740	1N6030759625	Consumer 16 Quanex	3	2844853.19	761378.83
7005081000180	1N6030759628	Consumer 16 Quanex	3	2845829.45441929	759191.466886493
7005081000170	1N6030754750	Consumer 16 Quanex	3	2845363.910881	758947.5338786

Project No. 56822_____’s Response to Staff’s First Set of RFIs to Targeted Electric CO-OPs Page 114 of 162

7005083000320	1N6030754486	Consumer 16 Quanex	3	2854437.62	758049.37
7011012000340	1N6030737306	Consumer 16 Quanex	3	2850049.98574162	747875.115975035
7011023000020	1N6030755029	Consumer 16 Quanex	3	2854880.68878	744133.3374101
7011023000200	1N6030751712	Consumer 16 Quanex	3	2859818.99615829	743928.417117971
701103500033B	1N6030757941	Consumer 16 Quanex	3	2867123.66673806	737815.057311226
7005085000920	1N6030738179	Consumer 16 Quanex	3	2866379.52928908	755485.685636487
7005073000970	1N6030758518	Consumer 16 Quanex	3	2857319.2295929	760045.958205929
700507700015C	1N6030759535	Consumer 16 Quanex	3	2879533.76432085	764946.709735941
584807200002A	1N6030758674	Consumer 19 BellvilleN	4	2899848.18888	811229.872169
5848071000480	1N6030754963	Consumer 19 BellvilleN	4	2897520.38628149	809293.192003677
584806200037B	1N6030755003	Consumer 19 BellvilleN	4	2902835.677045	814971.1562716
5848062000370	1N6030737026	Consumer 19 BellvilleN	4	2902914.67459399	815106.612493059
5848073000540	1N6030755968	Consumer 19 BellvilleN	4	2907089.751257	808918.0639279
5848081000490	1N6030754915	Consumer 19 BellvilleN	4	2898357.17207325	804314.684020038
7005035012730	1N6031794674	Consumer 19 BellvilleN	4	2865511.14722648	784341.326882446
7005025079620	1N6030757175	Consumer 19 BellvilleN	4	2869809.318082	786458.6605147
7005026000010	1N6030757101	Consumer 19 BellvilleN	4	2871213.06	790389.1
7005014000160	1N6030756717	Consumer 19 BellvilleN	4	2862433.63059458	794226.567239904
7005004000870	1N6030756720	Consumer 19 BellvilleN	4	2862953.912689	795373.6939053
7005004000940	1N6030756713	Consumer 19 BellvilleN	4	2861133.85	795285.24
7005003000800	1N6030754808	Consumer 19 BellvilleN	4	2858619.717219	796385.4169166
7005015000780	1N6030755742	Consumer 19 BellvilleN	4	2868631.797451	792098.0296191
584709600056A	1N6030740149	Consumer 19 BellvilleN	4	2873838.297618	798579.9180812
5847087000970	2J6029874379	Consumer 19 BellvilleN	4	2880231.489353	801227.1662678
5847087000530	1N6030757105	Consumer 19 BellvilleN	4	2877924.380726	803361.6444288
5847069000450	1N6030759869	Consumer 19 BellvilleN	4	2890687.6133866	814498.434428854
5847069000260	1N6030757834	Consumer 19 BellvilleN	4	2891316.08560882	814947.653178854
5847059000580	1N6030757828	Consumer 19 BellvilleN	4	2892188.009421	818834.2386947
5847069000840	1N6032777633	Consumer 19 BellvilleN	4	2890372.07519216	812048.781651076
5847069000820	1N6030757907	Consumer 19 BellvilleN	4	2888976.69758799	812074.779914965
5847068000870	1N6030759810	Consumer 19 BellvilleN	4	2885911.47623383	812108.465389504
5847058000350	1N6032746838	Consumer 19 BellvilleN	4	2884929.004248	819116.0046338
5847047000910	1N6030757765	Consumer 19 BellvilleN	4	2875979.75438262	821313.019471028
5847057000430	1N6030736976	Consumer 19 BellvilleN	4	2877611.25	818947.95
584706800092A	1N6030752098	Consumer 19 BellvilleN	4	2882713.16943596	811309.12393412

5847078000120	1N6032058424	Consumer 19 BellvilleN	4	2883000.776866	810705.6844923
5847096000100	1N6030757115	Consumer 19 BellvilleN	4	2875909.983719	800625.4952173
700501600063C	1N6030757956	Consumer 19 BellvilleN	4	2872267.82939384	791926.507115937
7005025088500	6S6030748124	Consumer 19 BellvilleN	4	2869696.25	785876.125
7005025087780	1N6030754873	Consumer 19 BellvilleN	4	2869009.89181611	785467.67057326
7005025000660	1N6030756772	Consumer 19 BellvilleN	4	2868077.908196	787039.0523396
700502500067B	1N6030737781	Consumer 19 BellvilleN	4	2868817.15168964	786924.173469323
7005025000470	1N6030754883	Consumer 19 BellvilleN	4	2868750.86727884	787895.882028045
7005035007120	1N6030754863	Consumer 19 BellvilleN	4	2868500.149064	785119.8530271
7005035007460	1N6030736540	Consumer 19 BellvilleN	4	2868685.633175	784916.1227669
7005035006170	TXD053611112	Consumer 19 BellvilleN	4	2868337.69224939	784937.558947023
584705900013A	1N6031794612	Consumer 19 BellvilleN	4	2889313.86049311	820816.631043463
700500600064A	1N6030750807	Consumer 19 BellvilleN	4	2872504.72	796983.59
7005025087870	1N6033888048	Consumer 19 BellvilleN	4	2868683.36697747	785838.413439529
584705500050A	6S6034572229	Consumer 19 BellvilleN	4	2869313.55660448	818427.38668836
5848039097540	1N6030741300	Consumer 06 PrairieView	6	2944316.375113	827766.1557004
5848049008730	1N6030747437	Consumer 06 PrairieView	6	2944828.301618	827168.7625033
5848049008740	1N6030747438	Consumer 06 PrairieView	6	2944891.796612	827152.2937717
5848049008850	1N6030747424	Consumer 06 PrairieView	6	2944959.700004	827143.6778133
5848049018180	1N6030747396	Consumer 06 PrairieView	6	2945169.08386	826977.3837918
5848049017200	1N6030741258	Consumer 06 PrairieView	6	2944690.566787	826953.8957654
5848049018590	1N6030741242	Consumer 06 PrairieView	6	2945333.603142	826733.3417136
5943041039090	1N6032817233	Consumer 06 PrairieView	6	2950689.15087317	826192.976131498
5848049029820	1N6030757195	Consumer 06 PrairieView	6	2945466.90034354	826049.231092605
5848049089670	1N6030756001	Consumer 06 PrairieView	6	2945802.29987604	823275.49388603
5848060000410	1N6030747880	Consumer 06 PrairieView	6	2947550.66595696	820968.231658921
5848049079060	1N6030757010	Consumer 06 PrairieView	6	2945690.1	823980.99
5848049080650	1N6030747287	Consumer 06 PrairieView	6	2946274.99	823784.86
5848050061570	1N6031794415	Consumer 06 PrairieView	6	2946916.14	824352.39
5848049080520	1N6030747285	Consumer 06 PrairieView	6	2946036.90568	823798.0449456
5848050052710	1N6031794676	Consumer 06 PrairieView	6	2947203.33	824751.35
5848050051320	1N6030747362	Consumer 06 PrairieView	6	2946597.17860607	824992.453965187
5848050051810	1N6030743602	Consumer 06 PrairieView	6	2946641.16	824781.78
5848049049130	1N6030743935	Consumer 06 PrairieView	6	2945503.941374	825116.4372041
5848049029720	1N6030737087	Consumer 06 PrairieView	6	2945441.19040872	826093.265579282

Project No. 56822_____’s Response to Staff’s First Set of RFIs to Targeted Electric CO-OPs Page 116 of 162

5848049040260	1N6030747441	Consumer 06 PrairieView	6	2946263.410991	825911.8970245
5848049040450	1N6030747442	Consumer 06 PrairieView	6	2946187.21	825891.49
5848040093290	1N6030741549	Consumer 06 PrairieView	6	2948173.562935	827994.5187647
5848040083690	1N6030741552	Consumer 06 PrairieView	6	2948122.951711	828259.6553017
5943041005450	1N6030741548	Consumer 06 PrairieView	6	2949162.761316	827470.4917585
5848050002470	1N6030742792	Consumer 06 PrairieView	6	2948026.408793	827359.6290775
5848050032100	1N6030744026	Consumer 06 PrairieView	6	2947627.74	826114.74
5848050033430	TED053611266	Consumer06 PrairieView	6	2947892.79	825905.06
5943052005240	1N6030746917	Consumer 06 PrairieView	6	2954066.06218377	822612.999495837
5943052029550	1N6030746885	Consumer 06 PrairieView	6	2956527.357168	821556.1283948
5943053064310	1N6030743986	Consumer 06 PrairieView	6	2959244.316291	819790.5598637
5943052018130	1N6030745500	Consumer 06 PrairieView	6	2955834.324825	822309.3619856
5943052025840	1N6030746936	Consumer 06 PrairieView	6	2954141.04	821433.6
5943041040880	1N6030746924	Consumer 06 PrairieView	6	2951156.391654	825660.0358919
5943042046330	1N6030745725	Consumer 06 PrairieView	6	2954714.410908	825657.7563784
5943042099370	1N6030744007	Consumer 06 PrairieView	6	2956363.618813	823153.0411727
5943042099340	1N6030743896	Consumer 06 PrairieView	6	2956235.576307	823185.6303072
5943042098240	1N6030744005	Consumer 06 PrairieView	6	2956001.988312	823146.9457336
5943042096080	1N6030744023	Consumer 06 PrairieView	6	2955069.708736	823245.2316708
5943042096060	1N6034916098	Consumer 06 PrairieView	6	2954927.32203697	823293.996215592
5943042096320	1N6030743902	Consumer 06 PrairieView	6	2954672	823062.0625
5943042087100	1N6030743947	Consumer 06 PrairieView	6	2955850.44209	823806.9521194
5943042087410		Consumer06 PrairieView	6	2955215.462025	823499.3483471
5943042087420	1N6038720594	Consumer 06 PrairieView	6	2955252.87818	823512.894883
5943042068510	1N6030744122	Consumer 06 PrairieView	6	2955782.066728	824524.5971829
5943042069520	1N6029840867	Consumer 06 PrairieView	6	2956387.96304118	824594.051752623
594303208598A		Consumer06 PrairieView	6	2954172.890895	828277.1081404
5943032085980	1N6037821018	Consumer 06 PrairieView	6	2954172.890895	828277.1081404
5943032085990	1N6039150313	Consumer 06 PrairieView	6	2954306.839926	828301.9719084
5848050021150	1N6031965596	Consumer 06 PrairieView	6	2946771.18723131	826569.266869461
5943042088290	1N6036768901	Consumer 06 PrairieView	6	2955968.88359298	823736.67028345
5943042078320	1N6036545359	Consumer 06 PrairieView	6	2955578.69378287	824180.116090384
5943042058860	1N6039999252	Consumer 06 PrairieView	6	2955748.18066228	824931.814489848
593707500040A	1N6030743839	Consumer 07 Seaway	8	2974431.84846199	857082.035002514
5937087000380	1N6030745204	Consumer 07 Seaway	8	2985081	852457.99

5943019000170	1N6030741650	Consumer 07 Seaway	8	2996740.99490689	843505.003995099
5943008000410	1N6029841194	Consumer 07 Seaway	8	2986846.984947	846211.9685777
593708700089B	X8D053610907	Consumer 07 Seaway	8	2985476.67	849781.45
593708700029A	1N6039999266	Consumer 07 Seaway	8	2985487.07496228	852927.319496828
593708700020C	1N6030753037	Consumer 07 Seaway	8	2986282.04426702	852939.821806009
593708700020B	1N6039999473	Consumer 07 Seaway	8	2986282.04426702	852939.821806009
5937076062480	1N6030737707	Consumer 07 Seaway	8	2975168.575563	855620.253687

SPONSOR:

Shawn Bard/Craig Engeling

STAFF 1-77 Does your company conduct proactive vegetation management on feeders located in hurricane prone areas? If so, how far in advance of hurricane season do you send out vegetation management crews?

RESPONSE:

ABC has maintained a 5-year clearing cycle and has had impressive results without issues from hurricanes.

SPONSOR:

Craig Engeling

STAFF 1-78 Please provide a list of the circuits that experienced a vegetation-related outage during the May 2024 Derecho and Hurricane Beryl, and provide the following information pertaining to the circuits identified:

- a. The name of the circuit(s);
- b. The date, time, and duration of the outage;
- c. The voltage of the circuit(s);
- d. A description of the cause of the outage; and
- e. The NERC category (Grow-In, Fall-In, Blow-In) is associated with the outage.

RESPONSE:

Sub:	Feeder:	Date:	Time:	Cause:	Ckt. Voltage:
------	---------	-------	-------	--------	---------------

May 2024 Derecho:

Sunnyside	1	5/16/24	17:39	Fallen Trees	7200
Prairie View	6	5/16/24	17:49	Fallen Trees	7200
Hempstead	1	5/16/24	17:35	Fallen Trees	7200
Seaway	8	5/16/24	17:57	Fallen Trees	14400
Waller	2	5/16/24	17:26	Fallen Trees	7200
Bellville	1	5/16/24	17:22	Fallen Trees	7200
Bellville	2	5/16/24	17:17	Fallen Trees	7200
Bellville	3	5/16/24	17:31	Weather/Trees	7200
Bellville	3	5/17/24	23:47	Weather/Trees	7200
Macedonia	1	5/16/24	17:57	Fallen Trees	14400
Macedonia	3	5/16/24	17:33	Fallen Trees	14400

Beryl:

Waller	2	7/8/24	06:59	Fallen Trees	7200
Quanex	3	7/8/24	07:19	Weather/trees	7200

Bellville	3	7/8/24	08:59	Fallen Trees	7200
Bellville	4	7/8/24	08:04	Weather/Trees	7200
Macedonia	1	7/8/24	04:09	Weather/Trees	14400
Macedonia	2	7/8/24	06:06	Fallen Trees	14400

SPONSOR:

Joe Kubena

STAFF 1-79 Please provide aerial maps of circuits and their easements that experienced a vegetation-related outage during the May 2024 Derecho and Hurricane Beryl. Overlay the map with the circuits that received vegetation management treatment for the past 5 years, using a distinct color code for each year. Provide any additional information or details to show clarity.

RESPONSE:

Attachment STAFF 1-79

SPONSOR:

Craig Engeling

STAFF 1-80 For the May 2024 Derecho and Hurricane Beryl, please provide the percentage of forced interruptions that were related to vegetation issues.

RESPONSE:

May 2024 Derecho: 63% of outages was due to trees (256 total outages, 160 due to trees)

Hurricane Beryl: 63% of outages were due to trees (202 total outage, 127 due to trees)

SPONSOR:

Joe Kubena

STAFF 1-81 What steps are being taken to address vegetation management and infrastructure issues that contributed to outages or were identified during restoration after the May 2024 Derecho and Hurricane Beryl?

RESPONSE:

Continue cycle clearing and routine service orders.

SPONSOR:

Craig Engeling

STAFF 1-82 When did you last substantively review, augment, or modify your vegetation management plan before July 8, 2024?

RESPONSE:

In 1998, the SBEC Board of Directors agreed to reclaim the ROW to the full extent of their ROW Easements. The goal was to achieve a 5-year cycle which has held true.

SPONSOR:

Craig Engeling

STAFF 1-83 What percentage of vegetation-related outages were caused by trees or branches outside of the easement or right of way? In responding to this question, please provide both an overall percentage and a breakdown for each county within your service territory that was affected by the May 2024 Derecho or within the Impacted Area for Hurricane Beryl.

RESPONSE:

64% of overall system outages were caused by trees outside of our ROW,
69% of outages in Waller County were caused by trees outside of our ROW,
16% of outages in Austin County were caused by trees outside of our ROW,
13% of outages in Colorado County were caused by trees outside of our ROW.

SPONSOR:

Joe Kubena

Joe Olivares

STAFF 1-84 Describe your programs or initiatives designed to work with property owners to address potentially hazardous vegetation management issues outside the utility easement or right of way.

RESPONSE:

SBEC employees report tree issues to the vegetation management department and SBEC members reporting any tree-related issues they observe.

SPONSOR:

Craig Engeling

STAFF 1-85 Identify the number of staff that participate in any program or initiative designed to address vegetation management hazards outside of the utility easement or right of way.

RESPONSE:

The entire SBEC staff participates in the vegetation management of the system. We have a hazard recognition program that all employees participate in.

SPONSOR:

Craig Engeling

Staffing and Mutual Assistance

STAFF 1-86 Please state whether you participated in or were a member of any mutual assistance programs on or before July 8, 2024. If yes:

- a. Please identify all mutual assistance programs you participated in or were a member of on that date;
- b. Please provide copies of any agreements entered as part of your membership or participation in those mutual assistance programs; and
- c. Please provide a list of members or participants for each mutual assistance program you are a member or participant in.

RESPONSE:

See Attached Document

Mutual Aid Agreement 2024

SPONSOR:

James Jouett

STAFF 1-87 Please describe, prior to, during, or in the aftermath of Hurricane Beryl how you integrated mutual assistance crews into your existing emergency preparedness and response processes, any coordination challenges you faced in doing so, and how you addressed any such challenges prior to, during, or in the aftermath of Hurricane Beryl.

RESPONSE:

All mutual assistance crews that worked Hurricane Beryl continually work in our system and are familiar with our processes and procedures. Because of this there were no challenges or obstacles to overcome.

SPONSOR:

James Jouett

STAFF 1-88 Please describe the command structure and communication protocols used to manage and direct resources from mutual assistance program(s) you received assistance from prior to, during, and in the aftermath of Hurricane Beryl.

RESPONSE:

All mutual assistance crews who assisted with Hurricane Beryl continually work in our system and are familiar with our processes and procedures. They were directed to report to the Area Supervisors each morning during to receive their work locations. Vegetation crews had an SBEC vegetation employee assigned to them each day. Since their work is scattered out and they are constantly moving throughout the system it made the workflow easier for them.

SPONSOR:

Jame Jouett

STAFF 1-89 Please describe the process and timeline for requesting or activating assistance as part of your membership or participation in any mutual assistance program(s) prior to, during, or in the aftermath of Hurricane Beryl.

RESPONSE:

Verbal communication with each contractor is the preferred method.

SPONSOR:

James Jouett

STAFF 1-90 Once you learned of the Hurricane Beryl’s potential to affect your ability to provide service to your customers, what specific actions were taken to begin coordinating with and staging mutual assistance resources to respond to service issues resulting from the hurricane?

RESPONSE:

Calls went out to all contractors to be staged up at each of our offices by Sunday July 7th. We had internal employees take vehicles home so they could begin assessing as soon as the weather permitted. Hotel reservations were made for contractors.

SPONSOR:

James Jouett

STAFF 1-91 Provide the following information concerning mutual assistance received in response to either the May 2024 Derecho or Hurricane Beryl:

- a. Identify all mutual assistance programs from which you requested assistance;
- b. Describe the specific assistance, including but not limited to the number of damage assessors, vegetation management crews, linemen, generators, and materials, requested from the mutual assistance program(s); and
- c. Provide all documentation of requests made to mutual assistance programs and their responses to your requests.
- d. If it is not evident from the documentation provided in response to Staff 1-91(c), please provide the date the request was made, the date the specific assistance requested began arriving in the Impacted Area, and the date by when the specific assistance requested was fully received.

RESPONSE:

A. May 2024. TEC Mutual Assistance Program.

Hurricane Beryl: Used local Contractors for vegetation, line construction, and assessors.

B. May 2024 Line Crews from three neighboring Cooperatives total 24 linemen. Three vegetation Management Crews each had 4 employees. Six Line Contractor crews total 30 linemen.

Hurricane Beryl: 4 damage assessors crews 8 workers. 5 vegetation crews 20 employees, 8-line construction crews 40 linemen.

C May 2024 and Hurricane Beryl. Requests for assistance were verbal.

D: May 2024: Calls for assistance went on May 16th. Assistance arrived the morning of the 17th. Hurricane Beryl: Calls for assistance went out for line contractors went out five days prior to landfall. Vegetation crews request went out 3 days prior. Assessors were contacted 2 days prior to landfall. Line contractors and vegetation crews arrived one day prior to landfall. Damage assessors moved in when weather conditions allowed for them to safely begin.

SPONSOR:

James Jouett

STAFF 1-92 When you receive responses to requests for assistance from other mutual assistance program participants that confirm their ability to provide the requested assistance, are you able to accept or decline resources being offered as needed, or must you accept all assistance provided in response to a request?

RESPONSE:

If we do not have the resources to assist another utility, then we can decline the request.

SPONSOR:

James Jouett

STAFF 1-93 What considerations did you give to reimbursement of costs and expenses incurred by participants of mutual assistance programs when making requests for assistance during the events of Hurricane Beryl?

RESPONSE:

The costs and expenses are discussed and finalized in our storm rates and our mutual aid agreements at the beginning of each year.

SPONSOR:

James Jouett

STAFF 1-94 Please provide a list of any hurricane response staging area you established in the lead up to and in the aftermath of Hurricane Beryl. Please include the date the center(s) was established, the location of the center(s), the day-to-day staffing levels at the center, and types of equipment and personnel staged at the center(s).

RESPONSE:

We were able to use our facilities as staging areas for Hurricane Beryl.

SPONSOR:

James Jouett

STAFF 1-95 How did the rollout and deployment of mutual assistance during the events of Hurricane Beryl compare to previous hurricane events during which you requested assistance from mutual assistance programs? In your response, please specifically compare the types and quantities of resources requested, the percentage of request aid provided, the efficacy of coordination between your company and the mutual assistance provider, and the efficiency of staging, deployment, and release of those assistance resources.

RESPONSE:

The rollout and deployment went exceptionally smooth compared to previous request. We received 100% of the requested aid. Considering all the contractors we used during Hurricane Beryl are our normal contractors, the efficiency and coordination went very well. We did not use a mutual aid provider. All mutual aid request were made by the Electric System Manager, Engineering Supervisor, and the Vegetation Supervisor

SPONSOR:

James Jouett

STAFF 1-96 Please describe what specific actions you took to begin staging internal staff and any responsive mutual assistance crews or resources.

RESPONSE:

We set up assessors in the south portion of our service territory. Once the conditions were favorable for them to begin assessing they could get damage information back to the control center so we could begin pulling material and get crews in route. We had 15-line personnel staged up in the south portion of our service territory as well.

In the center of our territory, we had a full staff once conditions to become favorable for assessments to begin. When information began coming in from the field we began restoration. We had five contractor crews, 3 vegetation crews and 15 in house line personnel staged up at this location.

In the northern part of our territory, we had assessors staged up and had six contractor crews, 3 vegetation crews, and 15 in house line personnel staged up at this location. Once assessments began coming in we began our restoration.

SPONSOR:

James Jouett

STAFF 1-97 Did you have to train or on-board any personnel that was provided in response to your request(s) for mutual assistance during the events of Hurricane Beryl? If yes, please describe what kind of training or on-boarding you provided.

RESPONSE:

No

SPONSOR:

James Jouett

Mobile Generation

STAFF 1-98 Please provide details regarding the lease or procurement of each mobile generation facility in the Transmission and Distribution Utility’s (TDU) control, including:

- a. Details regarding the competitive bidding process used or the justification for not using a competitive bidding process;
- b. The size of each mobile generation facility in megawatts (MW);
- c. The initial lease or procurement date of each facility;
- d. The lease term, in months, of each mobile generation facility;
- e. The expiration date of each facility’s lease;
- f. The to-date costs associated with each mobile generation facility, including operating, leasing costs, or other capital expense;
- g. The expected costs associated with each lease, including operation and leasing costs; and
- h. The expected return on investment associated with each lease or procurement.

RESPONSE:

N/A

SPONSOR:

James Jouett

STAFF 1-99 Please provide details regarding mobile generation or temporary emergency electric energy facilities (TEEEF):

- a. The control number of the TDU’s most recently approved mobile generation or TEEEF cost recovery;
- b. Details regarding whether the mobile generation or TEEEF cost recovery was processed as part of a larger Distribution Cost Recovery Factor proceeding or in a separate contested case;
- c. The revenue requirement associated with the TDU’s mobile generation or TEEEF expenses, broken out by rate class; and
- d. The in-force tariffs associated with the TDU’s mobile generation or TEEEF rider, broken out by rate class.

RESPONSE:

N/A

SPONSOR:

James Jouett

STAFF 1-100 Provide the following information concerning your customer base:

- a. Total number of customers served by rate class;
- b. Average demand by rate class;
- c. Peak demand by rate class; and
- d. Net peak demand by rate class.

RESPONSE:

A: Residential Single Phase: 25,494

Residential Three Phase: 47

General Service Single Phase: 5,895

General Service Three Phase: 346

Commercial Three Phase: 201

Seasonal: 30

Primary Service: 5

Industrial: 10

B: Transmission: 2 Average Demand: 4,267

Large Substation Service: 2 Average Demand: 19,291

Large Power: 1 Average Demand: 6,586

C: Transmission: Peak Demand: 5,017

Large Substation Service: Peak Demand: 23,073

Large Power: Peak Demand: 7,700

D: N/A

SPONSOR:

James Jouett

STAFF 1-101 Please provide information on the average customer density by circuit mile for the feeders in the Impacted Area.

RESPONSE:

Feeder	OH_UG Total Length	Miles	Meters	Meters/Mile
Sub 03-01	353561	66.9623106	685	10.229635
Sub 06-06	193484	36.644697	1762	48.083356
Sub 07-08	94480	17.8939394	181	10.115157
Sub 08-01	266989	50.5660985	450	8.899243
Sub 11-02	253204	47.955303	659	13.741963
Sub 16-03	710932	134.646212	1264	9.3875645
Sub 19-01	909293	172.214583	1729	10.0398
Sub 19-02	714937	135.404735	1364	10.073503
Sub 19-03	440225	83.375947	959	11.502118
Sub 19-04	794617	150.495644	1351	8.977004
Sub 21-01	426200	80.719697	1234	15.287471
Sub 21-02	581191	110.074053	1590	14.444821
Sub 21-03	470815	89.1695076	1819	20.39935
TOTAL	6209928	1176.12273	15047	12.793733

SPONSOR:

Shawn Bard

STAFF 1-102 Please provide an explanation of any alternatives to mobile generation facilities considered by the TDU before entering a lease for or procuring mobile generation facilities.

RESPONSE:

N/A

SPONSOR:

James Jouett

STAFF 1-103 Please describe the specific use cases contemplated by the TDU before executing a contract for the lease or procurement of mobile generation facilities.

RESPONSE:

N/A

SPONSOR:

James Jouett

STAFF 1-104 Please provide the following information concerning mobile generation facilities in your possession:

- a. The total capacity, in MWs, of mobile generation facilities leased or procured before July 8, 2024;
- b. The rationale for leasing or procuring that capacity; and
- c. And how mobility and capacity were prioritized when leasing or procuring mobile generation facilities.

RESPONSE:

N/A

SPONSOR:

James Jouett

STAFF 1-105 Provide the following information for mobile generation facilities already under lease or procured before July 8, 2024:

- a. The size, in MWs, of each deployed mobile generation facility;
- b. The length of time needed to move each deployed mobile generation facility from storage to its designated staging area;
- c. the length of time needed to move each mobile generation facility from staging to its deployment location;
- d. An explanation for how and where the mobile generation facility was used; and
- e. If a mobile generation facility was not used, an explanation as to why.

RESPONSE:

N/A

SPONSOR:

James Jouett

STAFF 1-106 Please describe all situations in which the TDU’s leased or procured mobile generation facilities were deployed before Hurricane Beryl. If applicable, please describe how those previous deployment situations differed from the use cases initially contemplated by the TDU.

RESPONSE:

N/A

SPONSOR:

James Jouett

STAFF 1-107 Please provide the following information on power restoration plans or procedures regarding critical infrastructure facilities.

- a. Did the TDU develop a list of critical infrastructure facilities within the TDU’s service territory?
- b. Did the TDU develop emergency preparedness plans in collaboration with critical infrastructure facilities in its service territory?
- c. Did the TDU develop a list of routes for use in reaching critical infrastructure facilities during an emergency or significant power outage?
- d. Did the TDU identify the specific steps it would take to energize critical infrastructure facilities in its service territory with mobile generation facilities?
- e. Did the TDU pre-position mobile generation facilities at critical infrastructure facilities in its service territory to respond to significant power outages in a timely manner?

RESPONSE:

N/A

SPONSOR:

James Jouett

STAFF 1-108 Please provide the following information regarding drills, procedures, and plans to use mobile generation facilities.

- a. Did the TDU develop operating plans or procedures for the deployment of mobile generation? If so, please describe the TDUs strategy for deploying its mobile generation.
- b. Did the TDU assign specific personnel to manage, either directly or indirectly, the operation and deployment of its mobile generation facilities?
- c. Did the TDU conduct personnel trainings or preparedness drills for the operation of its mobile generation facilities?
- d. Please describe any plans or procedures developed in coordination with other TDUs or mutual assistance groups for the operation or deployment of mobile generation.

RESPONSE:

N/A

SPONSOR:

James Jouett

STAFF 1-109 Please provide the following information regarding each mobile generation facility borrowed during Hurricane Beryl as part of a mutual assistance program or agreement.

- a. How the original request for mobile generation facilities through mutual assistance was made;
- b. The size, in MW, of each borrowed mobile generation facility;
- c. The date the mutual assistance program or agreement was entered;
- d. The date the borrowed mobile generation facility was deployed;
- e. The duration, in hours, of the borrowing agreement. Describe whether this duration was for a fixed number of hours or a specific number of operating hours;
- f. The identity of the original owner or lessor of the mobile generation facility subject to the mutual assistance program or agreement; and
- g. Whether obtained mobile generation facilities were used during, or in power restoration efforts following, Hurricane Beryl.
 - i. If the mobile generation facility was not deployed, provide an explanation as to why the mobile generation facility was not deployed; and
 - ii. If the mobile generation facility was deployed, provide an explanation of how it was used.

RESPONSE:

N/A

SPONSOR:

James Jouett

STAFF 1-110 When mobile generation facilities are offered to other TDUs during significant power outages, what information does the loaning TDU require from the borrowing TDU related to the probable operation of the mobile generation?

RESPONSE:

N/A

SPONSOR:

James Jouett

STAFF 1-111 Please describe if any mobile generation facilities in the TDU’s control were deployed in the service territories of municipally owned utilities or electric cooperatives during Hurricane Beryl.

RESPONSE:

N/A

SPONSOR:

James Jouett

STAFF 1-112 Please describe how the determination was made regarding when and where to deploy or redeploy each mobile generation facility during, or in response to, Hurricane Beryl.

RESPONSE:

N/A

SPONSOR:

James Jouett

STAFF 1-113 Please describe the number of distribution customers that had power restored by each mobile generation facility leased or procured by the TDU during, or in response to, Hurricane Beryl.

RESPONSE:

N/A

SPONSOR:

James Jouett

STAFF 1-114 Please describe the number of distribution customers that had power restored by each mobile generation facility obtained through mutual assistance during, or in response to, Hurricane Beryl.

RESPONSE:

N/A

SPONSOR:

James Jouett

STAFF 1-115 Please describe the number of transmission customers that had power restored by a mobile generation facility leased or procured by the TDU during, or in response to, Hurricane Beryl.

RESPONSE:

N/A

SPONSOR:

James Jouett

STAFF 1-116 Please describe the number of transmission customers that had power restored by a mobile generation facility obtained through mutual assistance during, or in response to, Hurricane Beryl.

RESPONSE:

N/A

SPONSOR:

James Jouett

STAFF 1-117 If applicable, please note if any fueling problems arose with deployed mobile generation facilities during, or in response to, Hurricane Beryl. If so, please describe the fueling problems in detail and any action that the TDU took in response.

RESPONSE:

N/A

SPONSOR:

James Jouett

STAFF 1-118 Please describe all costs incurred by the TDU that were associated with the deployment of mobile generation facilities during, or in response to, Hurricane Beryl.

RESPONSE:

N/A

SPONSOR:

James Jouett

STAFF 1-119 Please describe any obstacles that limited the deployment of mobile generation facilities during, or in response to, Hurricane Beryl.

RESPONSE:

N/A

SPONSOR:

James Jouett

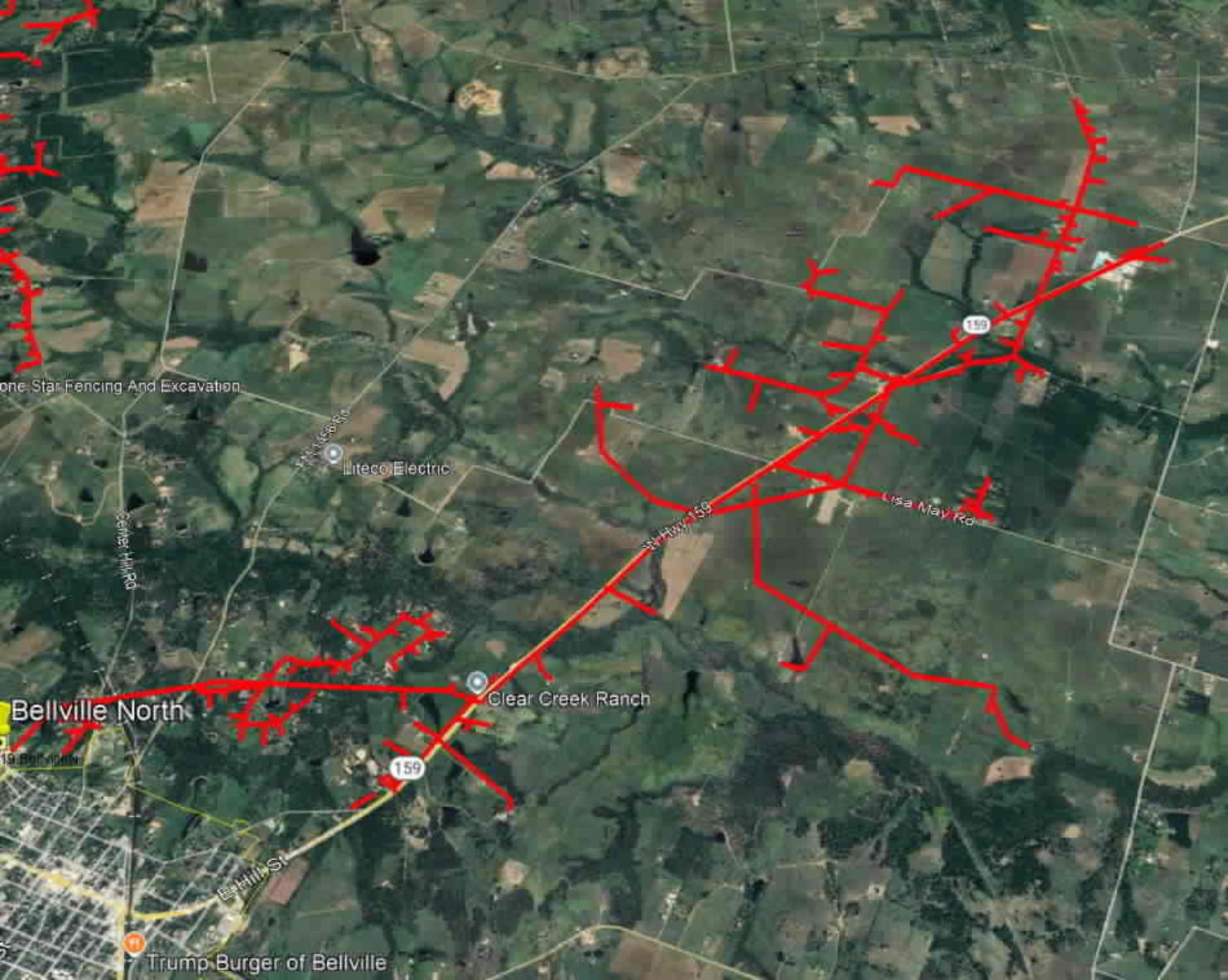
STAFF 1-120 Please describe any procedural improvements that the TDU intends to make prior to the next deployment of mobile generation facilities. If available, please reference specific sections of any after action report or lessons learned document the TDU has created.

RESPONSE:

N/A

SPONSOR:

James Jouett



One Star Fencing And Excavation

Liteco Electric

Liteco Electric

Seneca Hill Rd

St HWY 159

Lisa May Rd

Bellville North

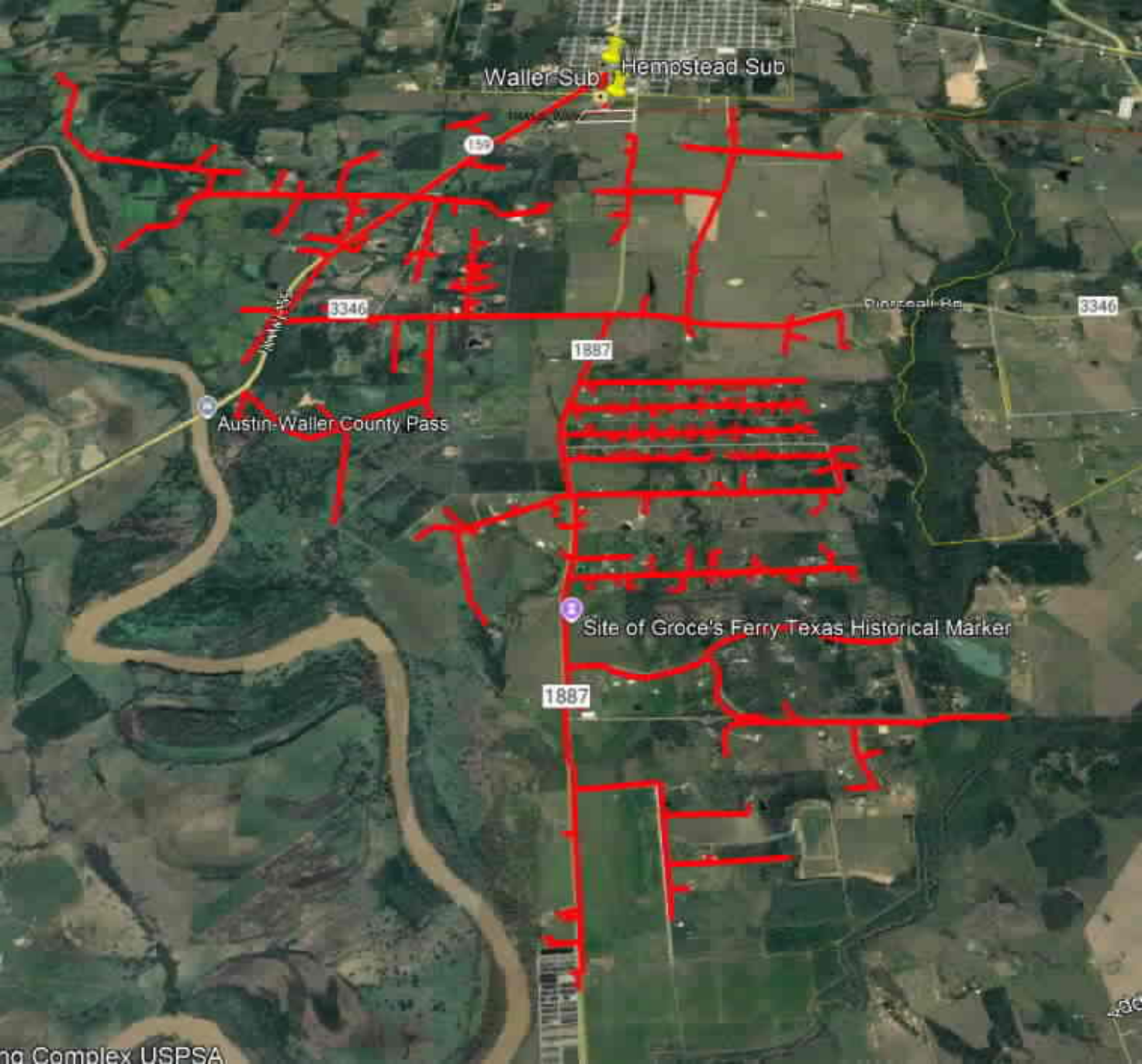
Clear Creek Ranch

159

159

Bellville St

Trump Burger of Bellville



Waller Sub Hempstead Sub

1887

3346

1887

Pinson Rd

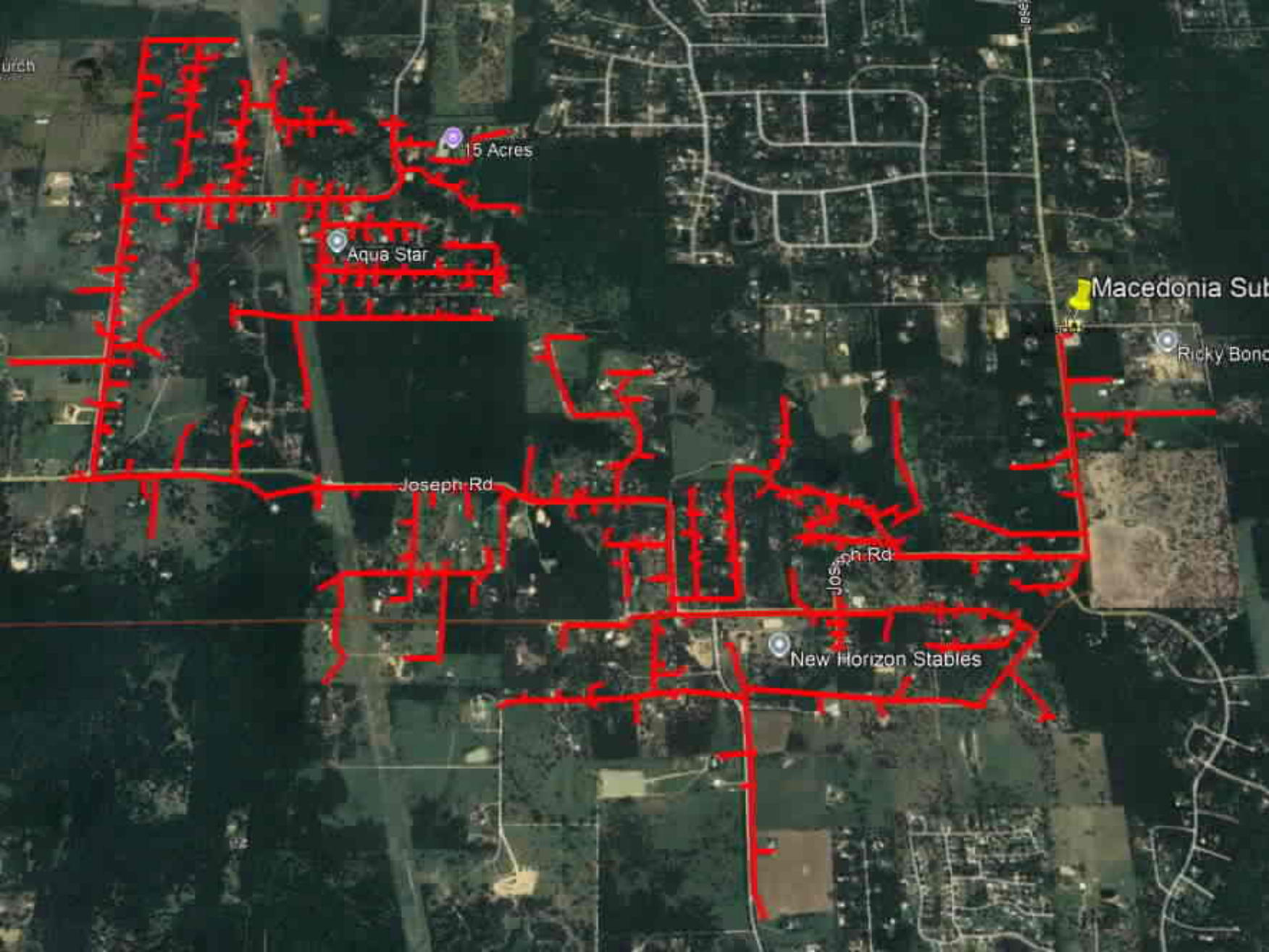
3346

Austin-Waller County Pass

1887

Site of Groce's Ferry Texas Historical Marker

Complex USPSA



15 Acres

Aqua Star

Joseph Rd

New Horizon Stables

Joseph Rd

Macedonia Sub

Ricky Bond

Screaming Tees

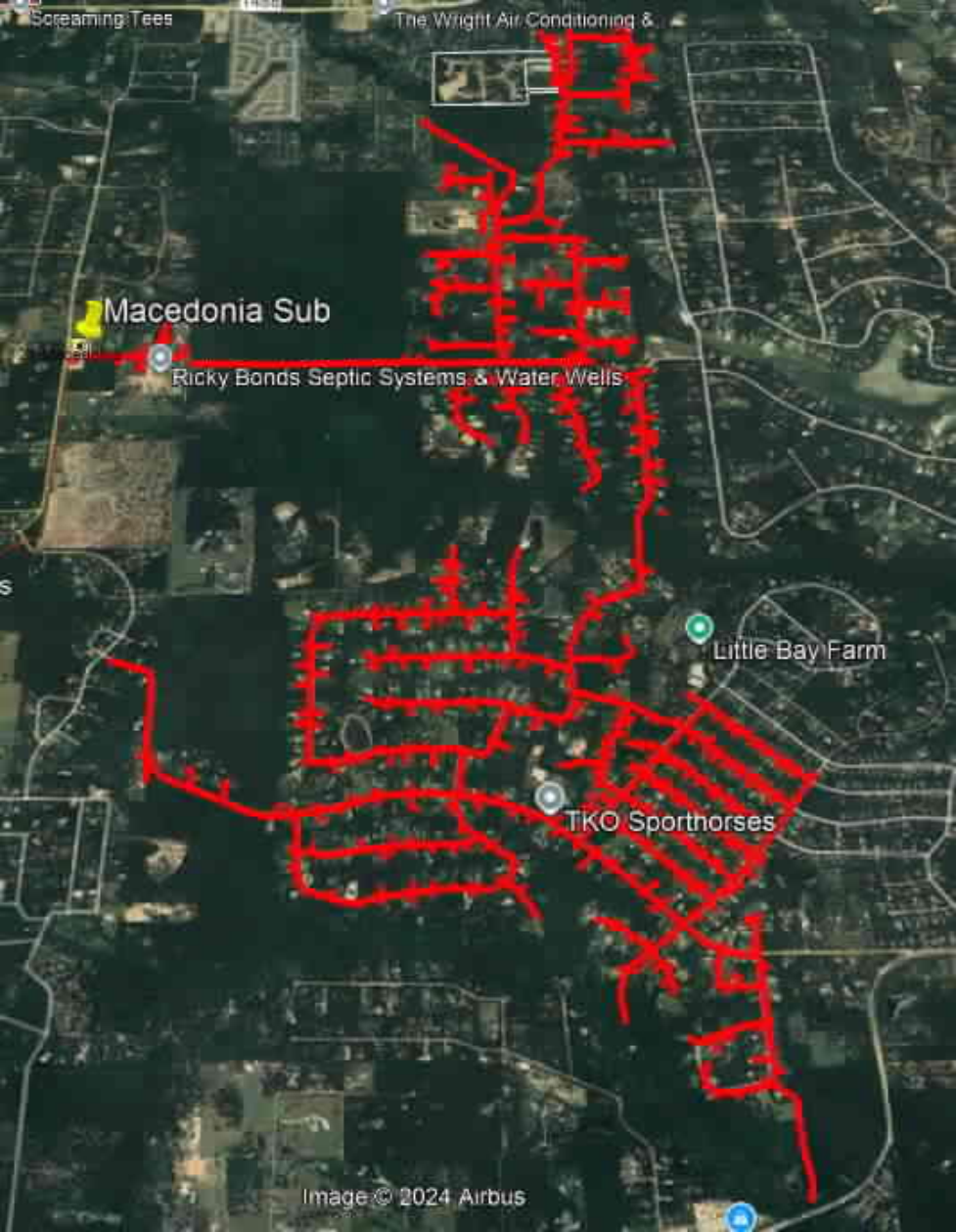
The Wright Air Conditioning &

Macedonia Sub

Ricky Bonds Septic Systems & Water Wells

Little Bay Farm

TKO Sporthorses





WCSA (Waller Cou

Prairie View Bucket Complex

Prairie View Sub

Hamlet

Walter County Fairgrounds

359

Brumlow Rd

Brumlow Rd

Brumlow Rd

Brumlow Rd

Choctaw Construction Services

Cochran Rd

Cochran Rd

Belka Rd

Belka

ery Specialties, Inc



Bellville South Sub

2429

Quanex

7IL Ranch

2429

Amstler Hills Winery

36

Millheim Cemetery

1094

Cal Spring Country Club

1094

1094

Image © 2024 Airbus

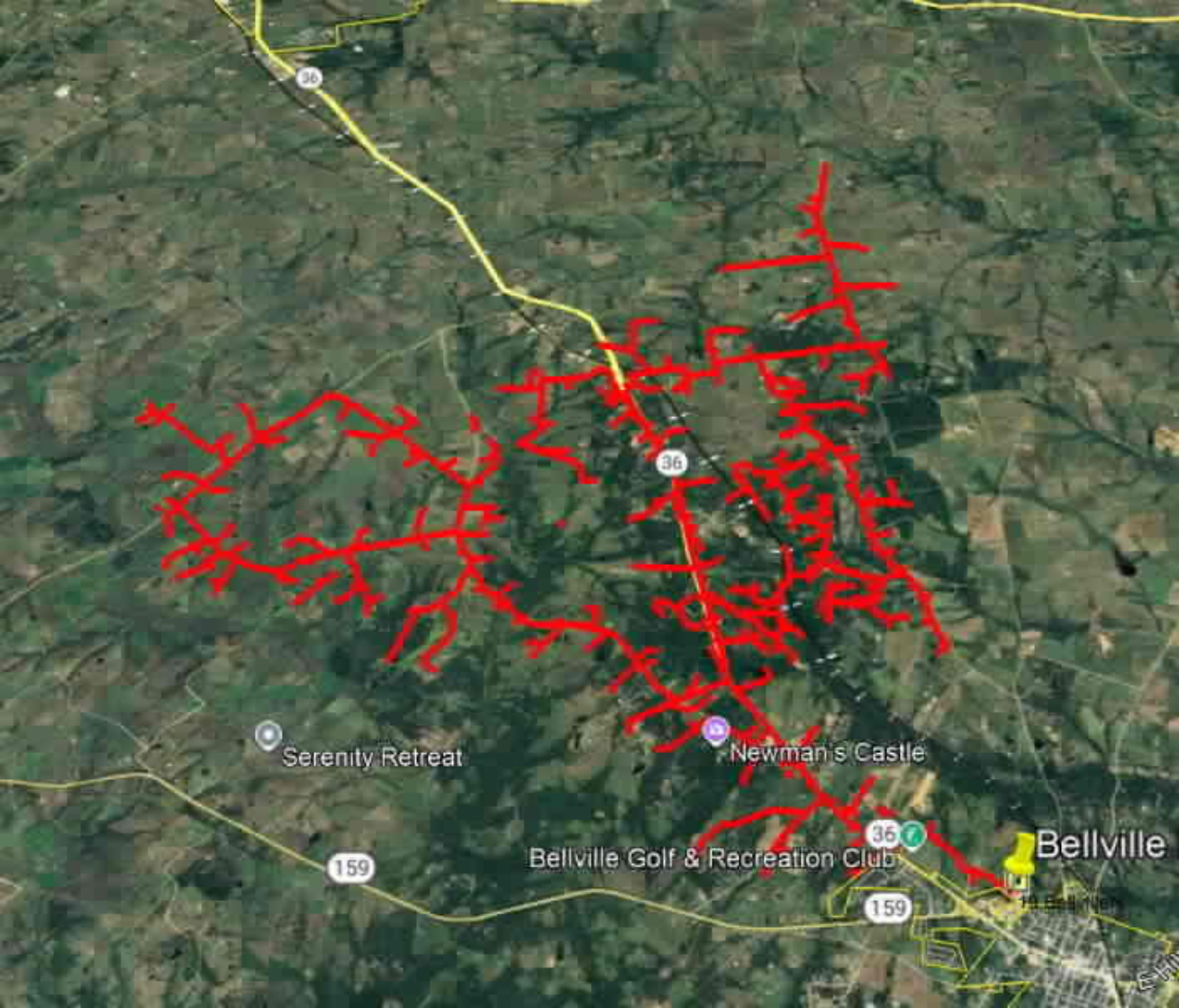
FM 2487 Rd

FM 2486

Cane Corsi For Sale

Dying Bird Farms

Mill Creek Rd



36

36



Serenity Retreat



Newman's Castle



Bellville Golf & Recreation Club

159

159

Bellville



The following files are not convertible:

RFI-1-66-

DerechoBerylBrokenPoleInspection.xlsx

Please see the ZIP file for this Filing on the PUC Interchange in order to access these files.

Contact centralrecords@puc.texas.gov if you have any questions.

ELECTRIC SYSTEMS GROUP MANAGER/ELECTRIC SYSTEMS STAFF ASST

MUTUAL AID AGREEMENT

In consideration of the mutual commitments given herein, each of the Signatories to this Mutual Aid Agreement agrees to render aid to any of the other Signatories as follows:

- 1.) **Request for aid:** The Requesting Signatory agrees to make its request in writing to the Aiding Signatory within a reasonable time after aid is needed and with reasonable specificity. The Requesting Signatory agrees to compensate the Aiding Signatory as specified in this Agreement and in other agreements that may be in effect between the Requesting and Aiding Signatories.
- 2.) **Discretionary rendering of aid.** Rendering of aid is entirely at the discretion of the Aiding Signatory. The agreement to render aid is expressly not contingent upon a declaration of a major disaster or emergency by the federal government or upon receiving federal funds.
- 3.) **Invoice to the Requesting Signatory.** Within 90 days of the return to the home work station of all labor and equipment of the Aiding Signatory, the Aiding Signatory shall submit to the Requesting Signatory an invoice of all charges related to the aid provided pursuant to this Agreement. The invoice shall contain only charges related to the aid provided pursuant to this Agreement.
- 4.) **Charges to the Requesting Signatory.** Charges to the Requesting Signatory from the Aiding Signatory shall be as follows:
 - a.) **Labor force.** Charges for labor force shall be in accordance with the Aiding Signatory's standard practices.
 - b.) **Equipment.** Charges for equipment, such as bucket trucks, digger derricks, and other special equipment used by the aiding Signatory, shall be at the reasonable and customary rates for such equipment in the Aiding Signatory's locations.
 - c.) **Transportation.** The Aiding Signatory shall transport needed personnel and equipment by reasonable and customary means and shall charge reasonable and customary rates for such transportation.
 - d.) **Meals, lodging and other related expenses.** Charges for meals, lodging and other expenses related to the provision of aid pursuant to this Agreement shall be the reasonable and actual costs incurred by the Aiding Signatory.
 - e.) **Counterparts.** The Signatories may execute the Mutual Aid Agreement in one or more counterparts, with each counterpart being deemed an original Agreement, but with all counterparts being considered one Agreement.

Date 3-26-24

By [Signature]

Entity San Bernard Electric Coop

Title Electric System Manager

Approved: 04-25-06

Revision: 04/15/24

ay Sub

Field Stone Rd

Birdford Rd

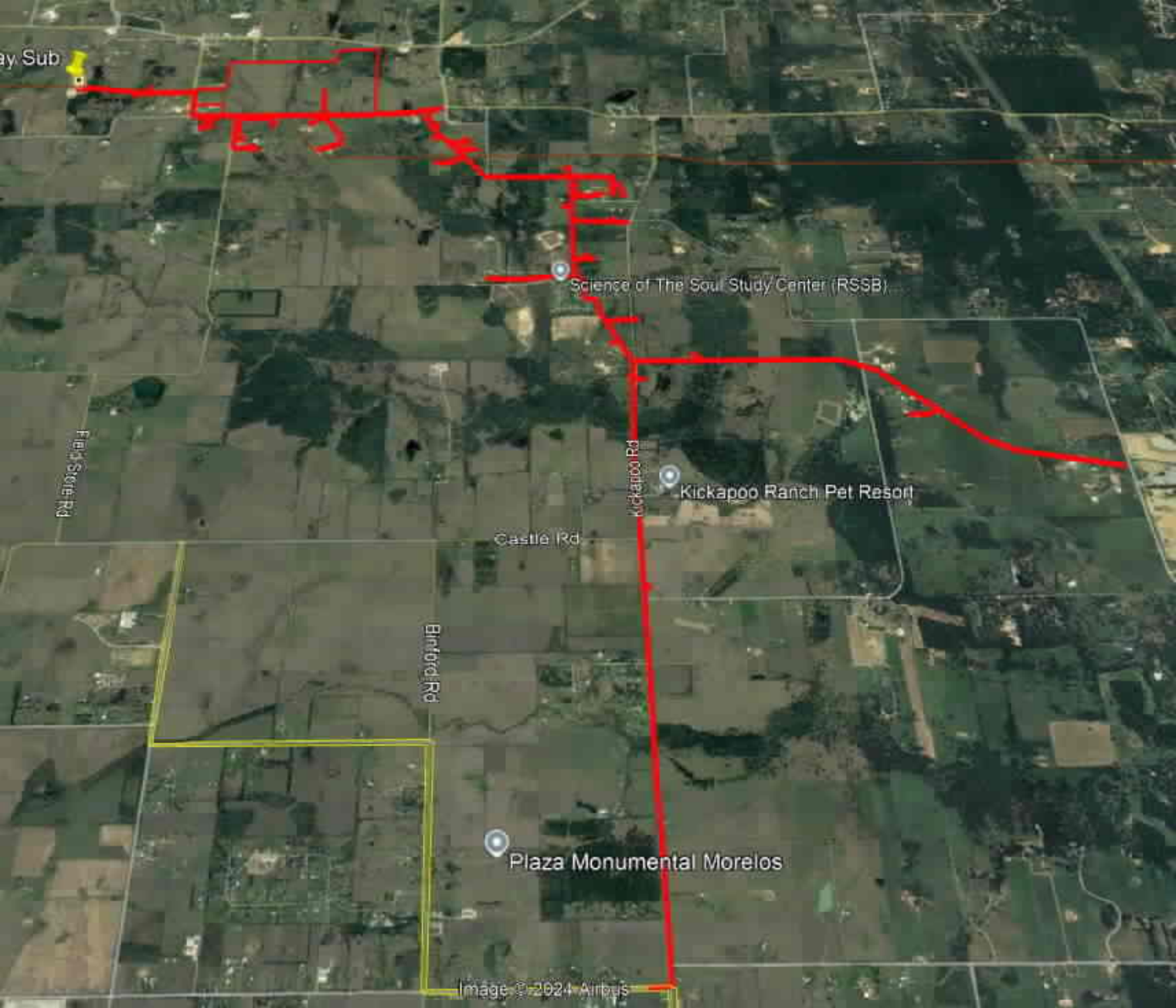
Castle Rd

Kickapoo Rd

Science of The Soul Study Center (RSSB)

Kickapoo Ranch Pet Resort

Plaza Monumental Morelos



Shooting Complex USPSA

Creekside Nurseries shipping and receiving

Walden Creek Rd

Reed Business Services

True Sign E

BEIR Rd

Dollar General

Chev

Sunnyside Sub

03 Sunnyside

Waste Solutions USA

Crump Ferry Rd

Image © 2021 Airbus

1887

1887

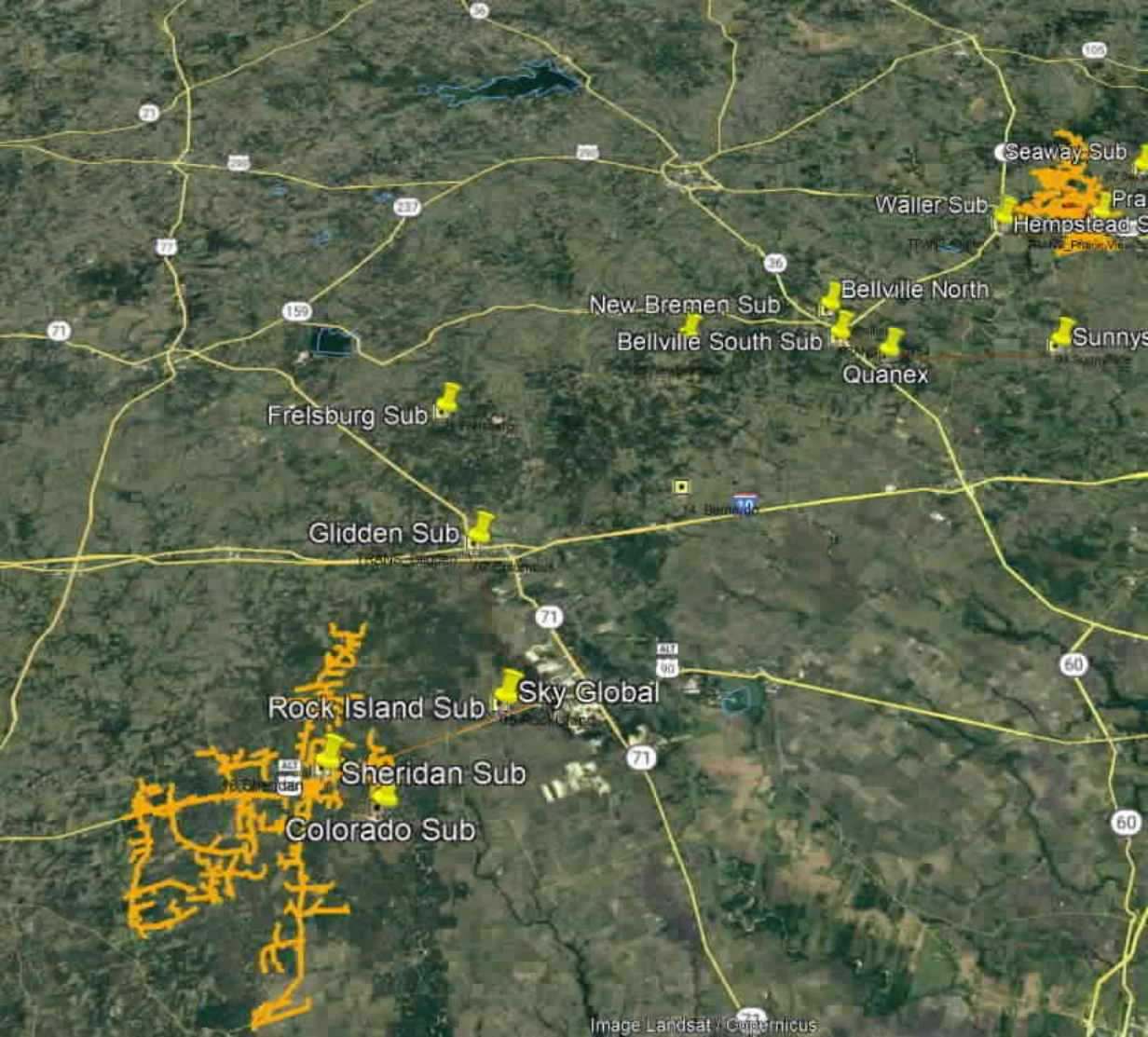
1887

1887

359

359

359



Seaway Sub

Wäller Sub

Hempstead S

Bellville North

New Bremen Sub

Bellville South Sub

Quanax

Sunnys

Frelsburg Sub

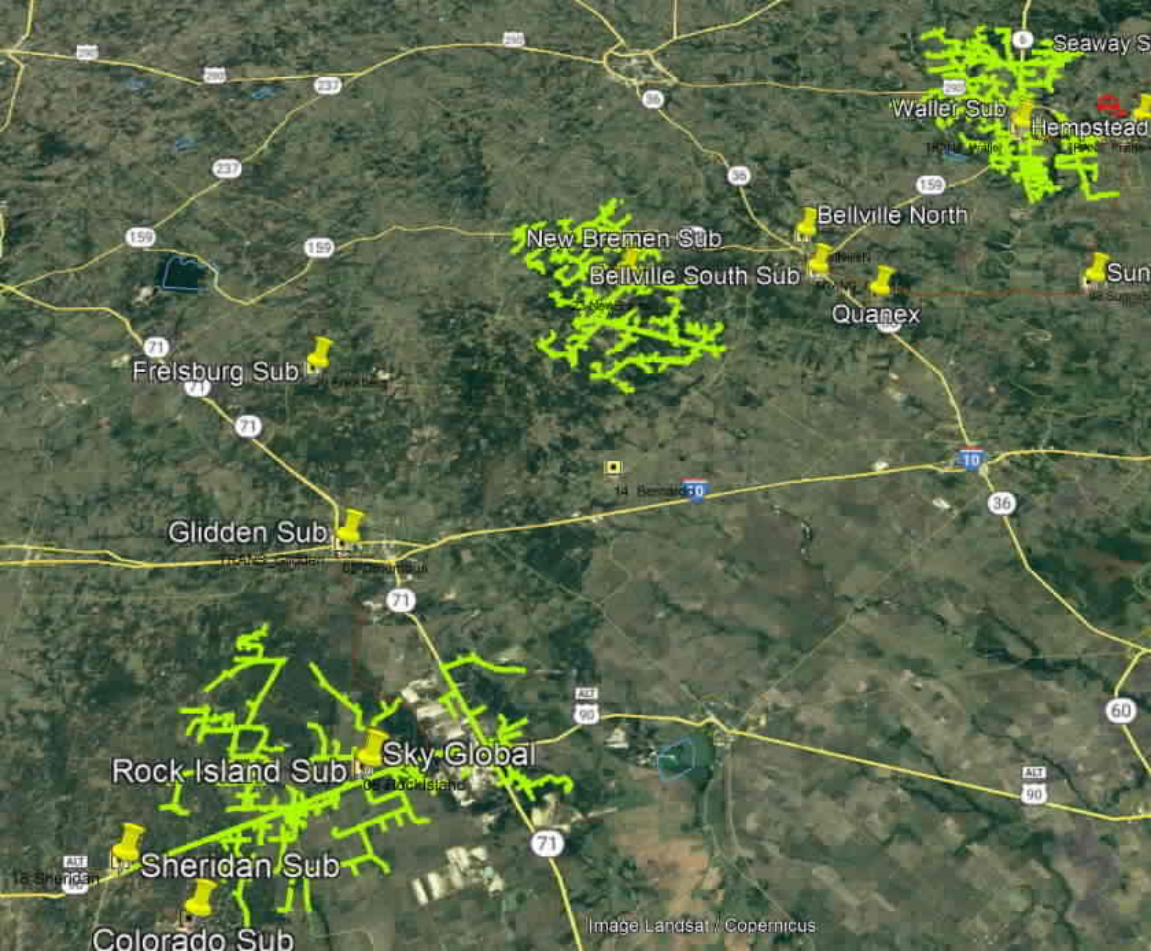
Glidden Sub

Rock Island Sub

Sky Global

Sheridan Sub

Colorado Sub



Seaway S

Waller Sub

Hempstead

Bellville North

New Bremen Sub

Bellville South Sub

Quanex

Sun

Freisburg Sub

Glidden Sub

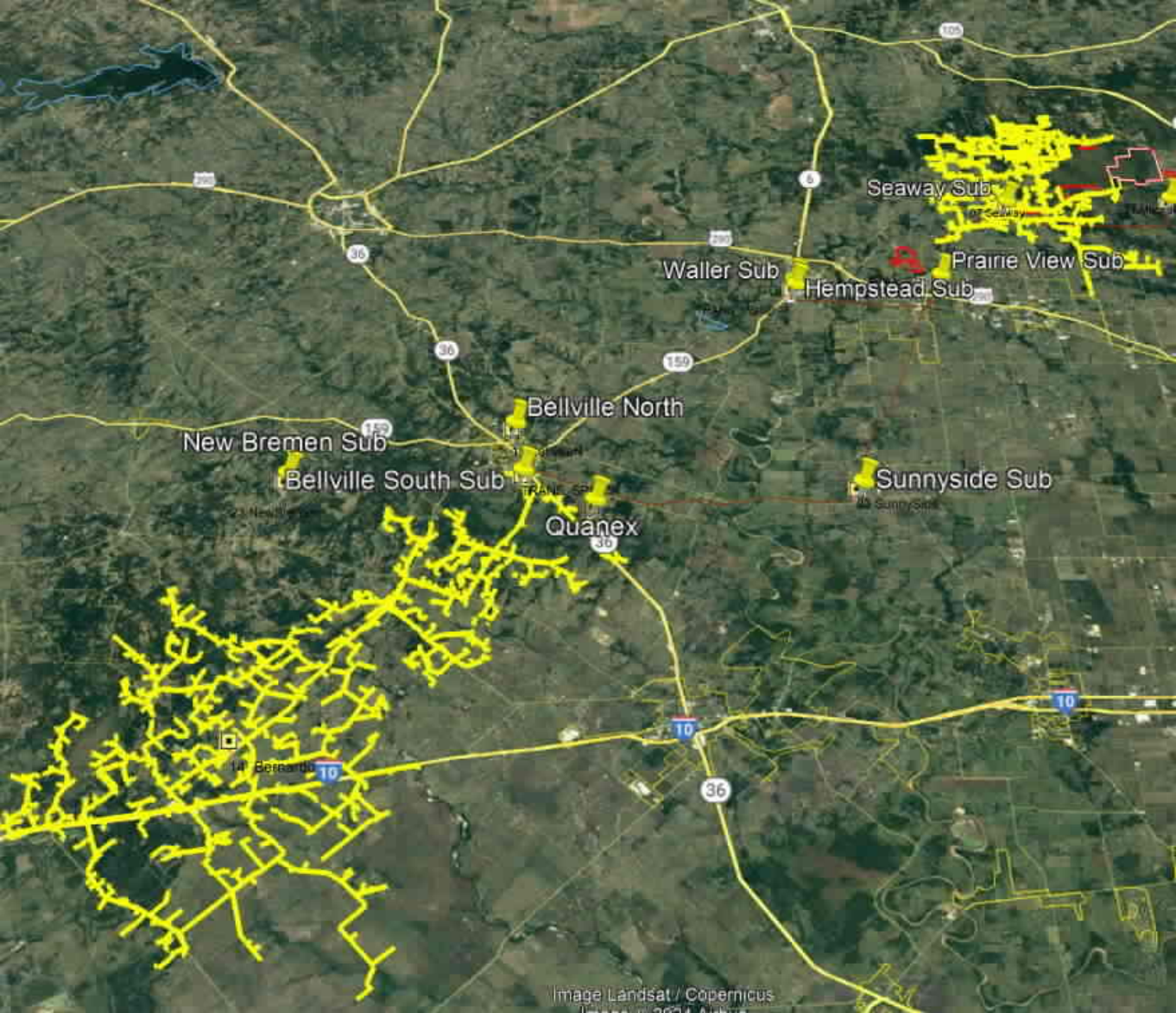
Rock Island Sub

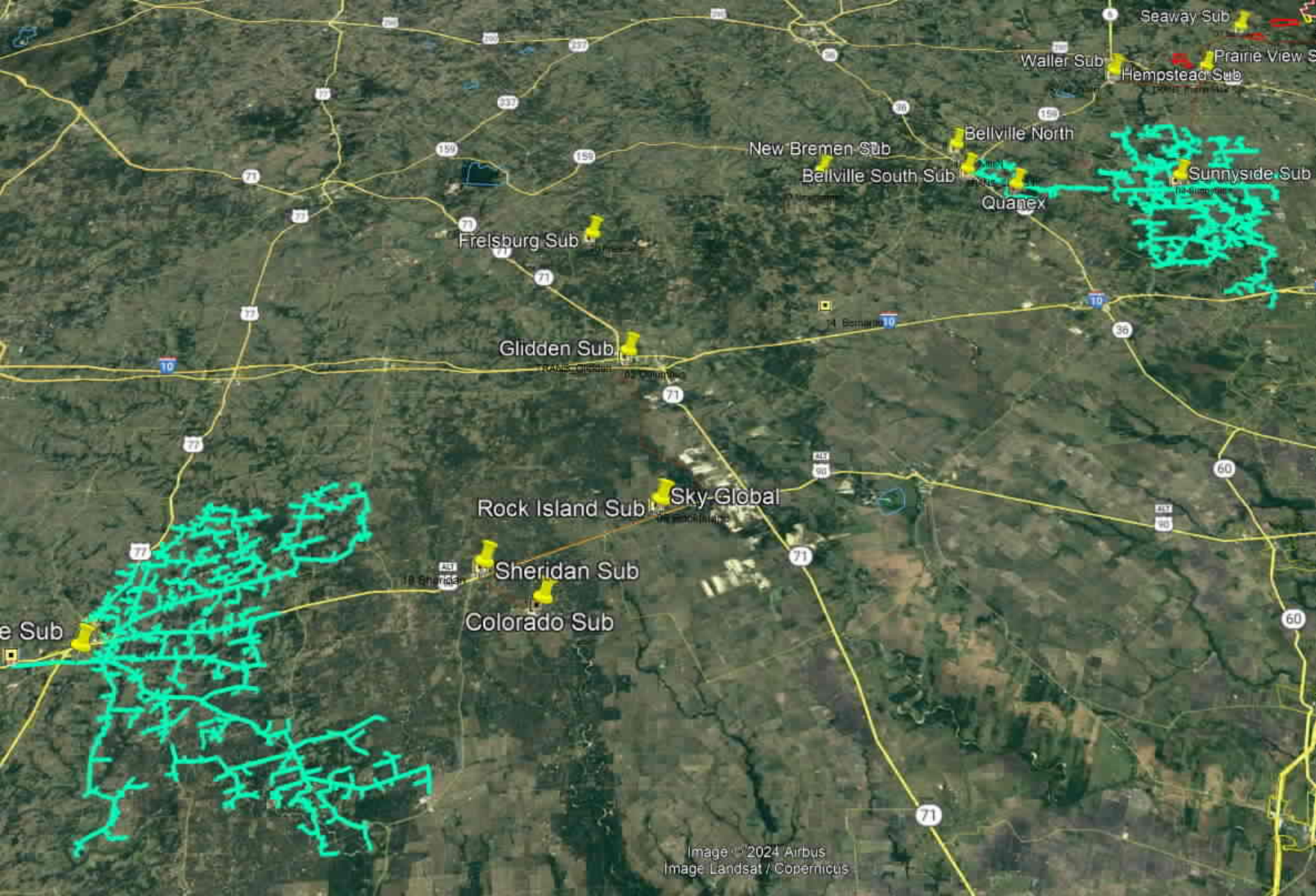
Sky Global

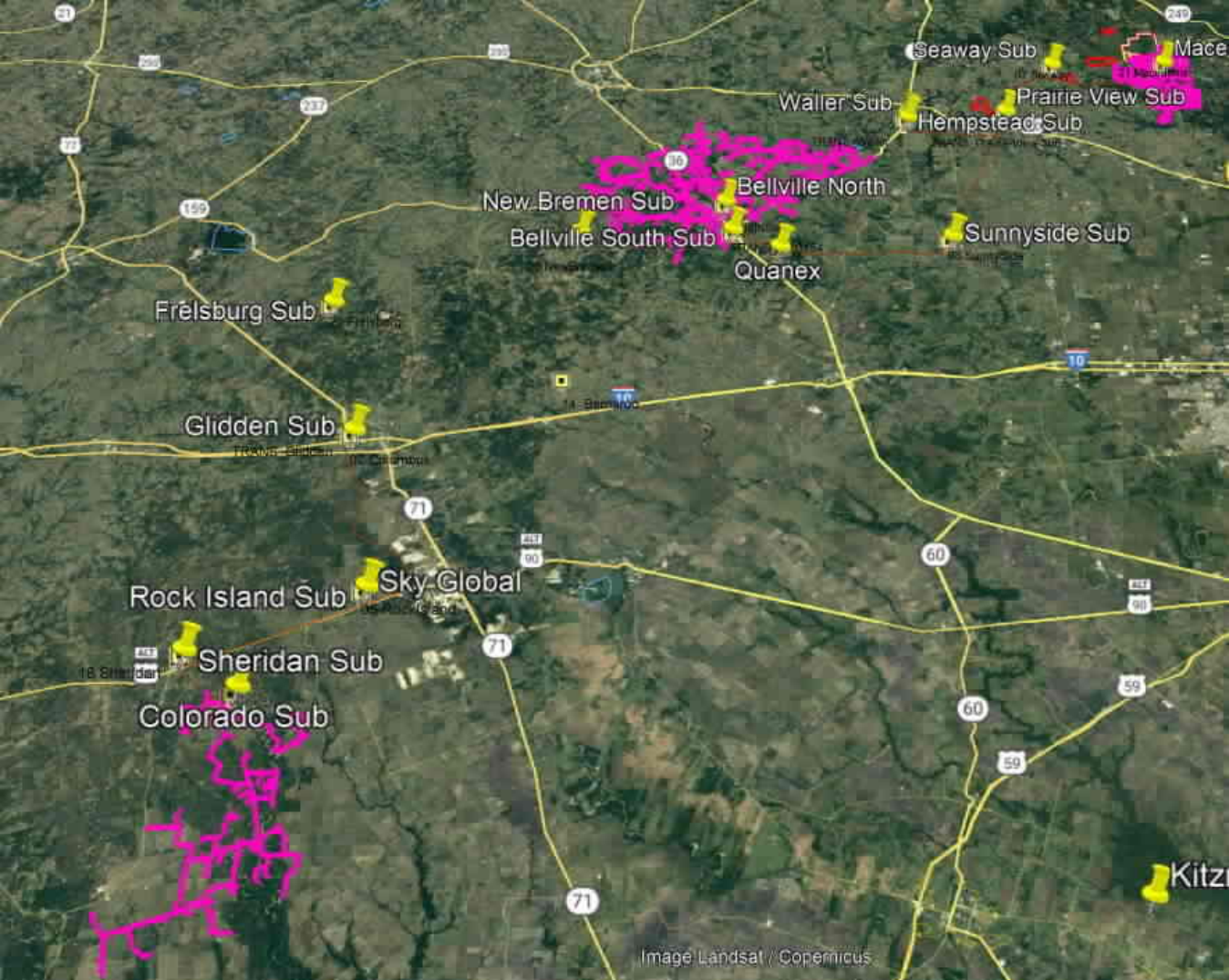
Sheridan Sub

Colorado Sub

Image Landsat / Copernicus







Seaway Sub

Mace

Waller Sub

Prairie View Sub

Hempstead Sub

New Bremen Sub

Bellville North

Bellville South Sub

Sunnyside Sub

Quanex

Frélsburg Sub

Glidden Sub

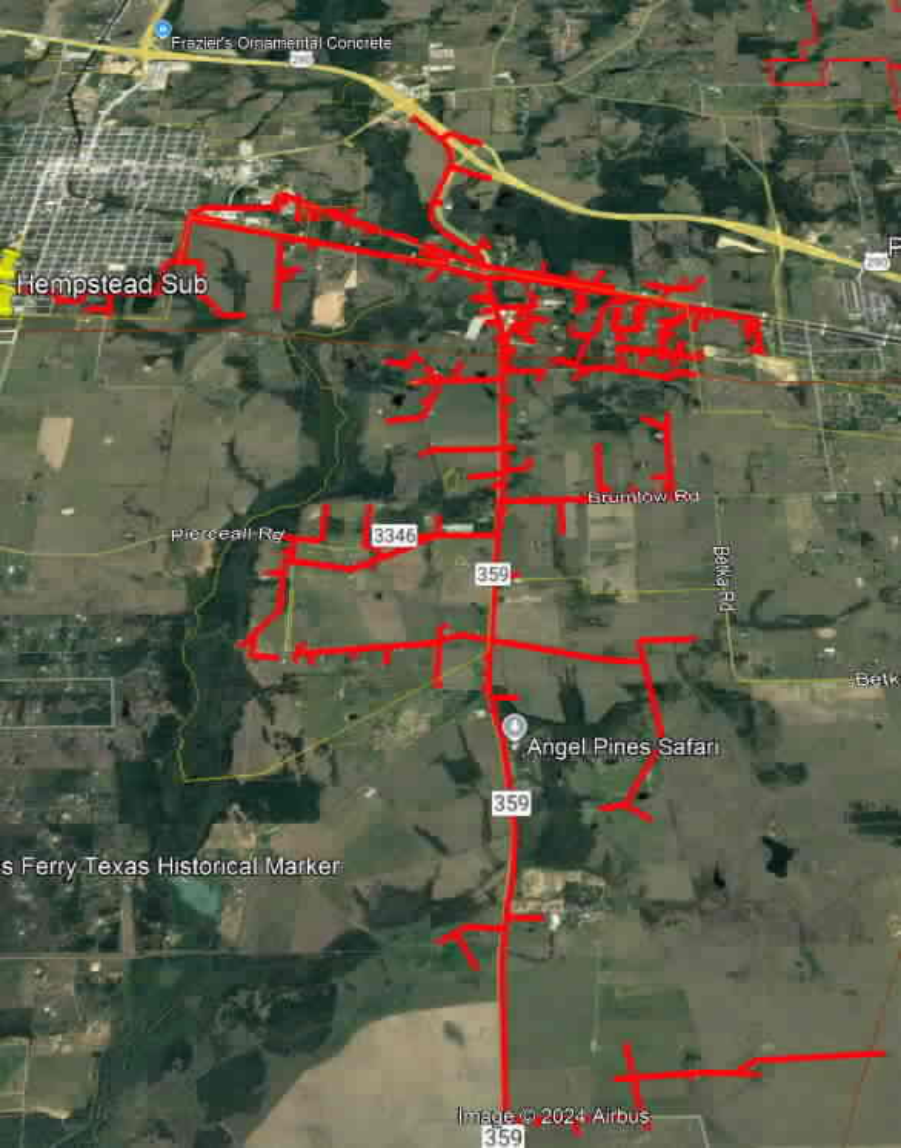
Rock Island Sub

Sky Global

Sheridan Sub

Colorado Sub

Kitz



Frazier's Ornamental Concrete

Hempstead Sub

Pierceall Rd

3346

359

Brumlow Rd

Balka Rd

4

Angel Pines Safari

359

s Ferry Texas Historical Marker

Image © 2024 Airbus

359