



## **Filing Receipt**

**Filing Date - 2024-10-17 01:15:56 PM**

**Control Number - 56799**

**Item Number - 28**

**SOAH DOCKET NO. 473-24-22699  
PUC DOCKET NO. 56799**

|                                                                                                                                                                                                                                    |                                              |                                                                             |
|------------------------------------------------------------------------------------------------------------------------------------------------------------------------------------------------------------------------------------|----------------------------------------------|-----------------------------------------------------------------------------|
| <b>APPLICATION OF ONCOR ELECTRIC<br/>DELIVERY COMPANY LLC TO<br/>AMEND ITS CERTIFICATE OF<br/>CONVENIENCE AND NECESSITY FOR<br/>THE REITER SWITCH-TESORO<br/>SWITCH 345-KV TRANSMISSION LINE<br/>IN ECTOR AND MIDLAND COUNTIES</b> | <b>§<br/>§<br/>§<br/>§<br/>§<br/>§<br/>§</b> | <b>BEFORE THE<br/><br/>PUBLIC UTILITY COMMISSION<br/><br/><br/>OF TEXAS</b> |
|------------------------------------------------------------------------------------------------------------------------------------------------------------------------------------------------------------------------------------|----------------------------------------------|-----------------------------------------------------------------------------|

**SECOND JOINT AGREED MOTION TO ADMIT EVIDENCE**

The following parties timely file this Second Joint Agreed Motion to Admit Evidence: Oncor Electric Delivery Company LLC (“Oncor”); Public Utility Commission of Texas (“Commission”) Staff (“Staff”); Oxy USA WTP, LP and Kerr-McGee Oil & Gas Onshore (together, “Oxy”); and Matthew C. Bell, on behalf of himself and Bell Legacy Land LLC, (all parties together, the “Parties”).

**I. INTRODUCTION**

On July 25, 2024, Oncor filed an application to amend its certificate of convenience and necessity for the Reiter Switch to Tesoro Switch 345-kilovolt transmission line project in Ector and Midland counties, Texas (“Project”). The Commission referred the proceeding to the State Office of Administrative Hearings (“SOAH”) the following day. On September 23, 2024, the Parties entered into a unanimous stipulation and settlement agreement and concurrently filed joint motions to admit evidence, dismiss the case from SOAH, and remand the case to the Commission. The SOAH Administrative Law Judge issued SOAH Order No. 3, granting the motions filed by the Parties, on September 24, 2024.

Once this proceeding was remanded to the Commission, the Office of Policy and Docket Management (OPDM) filed a memorandum dated October 10, 2024, requesting the Parties either identify certain information in the evidentiary record or seek to admit the information. The

requested materials include information that is inaccessible as previously-filed or not already in the evidentiary record. Therefore, the Parties now jointly file this agreed motion to admit evidence.

## **II. MOTION TO ADMIT EVIDENCE**

In response to the memorandum issued by OPDM, Oncor respectfully requests that the following information be admitted into the evidentiary record:

- (a) the native Excel version of Table 5.2, as described in the environmental assessment and routing study filed with Oncor's application as Attachment No. 1 (filed with this motion as **Exhibit A**);
- (b) the native Excel version of Table 5.3, as described in the environmental assessment and routing study filed with Oncor's application as Attachment No. 1 (filed with this motion as **Exhibit B**); and
- (c) an environmental and land use constraints map of the Project that reflects the location of intervenor landowner properties, all routing segments presented in the application, and the lack of affected habitable structures (filed with this motion as **Exhibit C**).

## **III. CONCLUSION**

For the reasons set forth herein, the Parties respectfully request that the informational materials described above be admitted into the evidentiary record. Oncor has conferred with the Parties and is authorized to represent that the Parties agree with this request.

Respectfully submitted,

By: /s/ Rachael Curtin

Jaren A. Taylor  
State Bar No. 24059069  
Rachael L. Curtin  
State Bar No. 24132295

VINSON & ELKINS LLP  
Trammell Crow Center  
2001 Ross Avenue, Suite 3900  
Dallas, Texas 75201-2975  
Telephone: (214) 220-7754  
Facsimile: (214) 999-7754  
jarentaylor@velaw.com  
rcurtin@velaw.com

**ATTORNEYS FOR ONCOR ELECTRIC  
DELIVERY COMPANY LLC**

**CERTIFICATE OF SERVICE**

It is hereby certified that a copy of the foregoing has been filed with the Commission and served on all parties via email pursuant to SOAH Order No. 1 in this docket, on this the 17th day of October, 2024.

/s/ Stephanie Tenorio

The following files are not convertible:

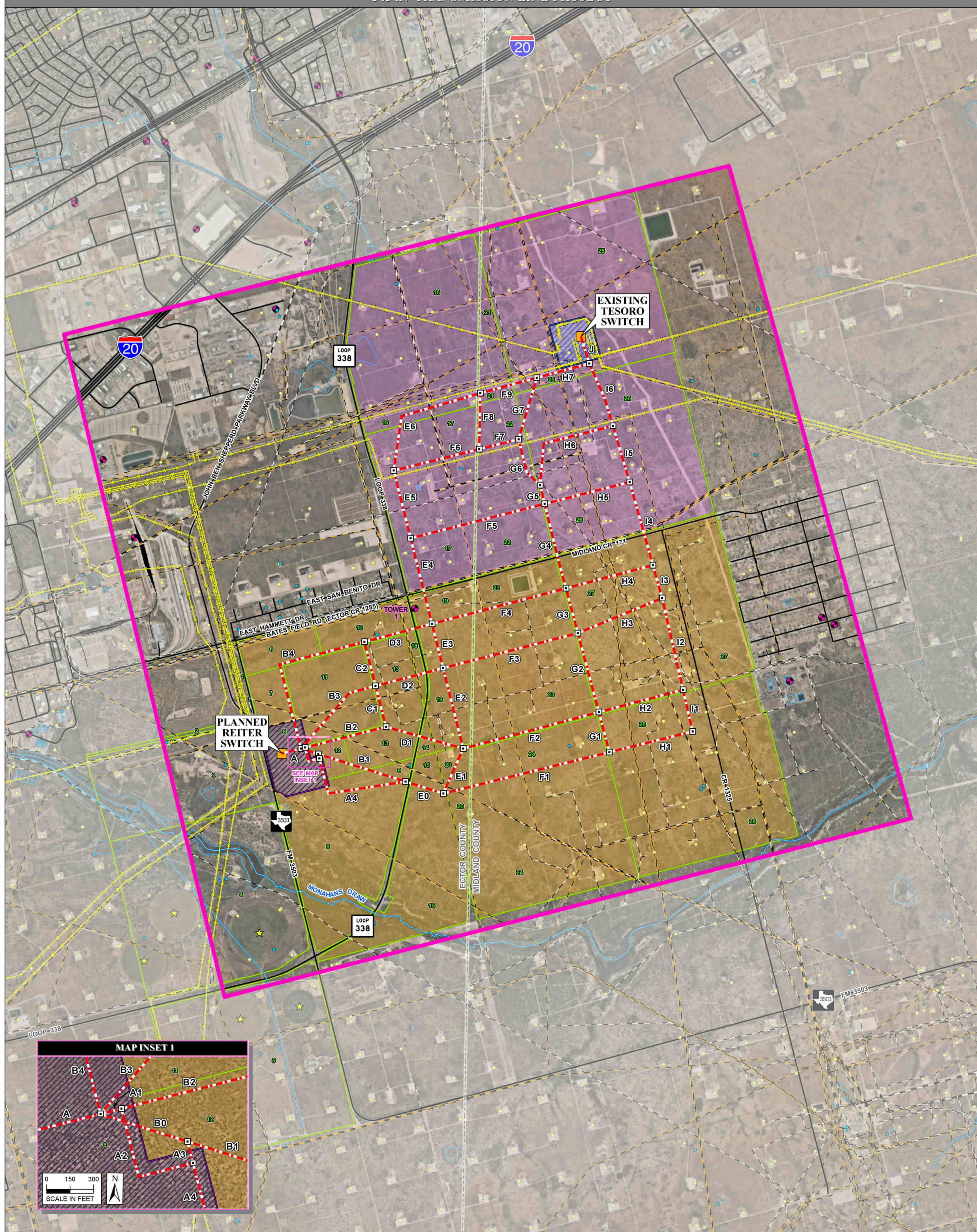
Exhibit A\_EA-Table 5\_2\_\_Environmental  
Data for Alternative Route Evaluation.xlsx

Exhibit B\_EA-Table 5\_3\_\_Environmental  
Data for Alternative Route Link Evaluation.xlsx

Please see the ZIP file for this Filing on the PUC Interchange in order to  
access these files.

Contact [centralrecords@puc.texas.gov](mailto:centralrecords@puc.texas.gov) if you have any questions.





Notes:

1. Some legend symbols are enlarged for easier identification.
2. Aerial photography is from the most recent available database (NearMap, 2024).
3. Sensitive cultural resource data are not shown on this map as these data are not to be reproduced, distributed, or released to the public.
4. Data are for display purposes only. All features and boundaries have been approximated based on information gathered from review of public resources and from field reconnaissance. Railroad Commission of Texas GIS data was last updated on May 30, 2024.
5. This map contains county tax office and appraisal district data. Property data prepared by Integra Realty Resources with route location furnished by Half Environmental Team. The county boundary line within the study area is marked as a tract boundary to reflect the associated county tax records for the purpose of parcel numbering within this map.
6. Legend items indicated by (\*) represent features that were researched, verified, and recorded but are otherwise beyond the map extents, and cannot be located on the map.

Date Plotted: 9/4/2024

Date Revised: 9/4/2024

