



Filing Receipt

Filing Date - 2023-08-23 01:53:36 PM

Control Number - 55067

Item Number - 1698

LIST OF EXHIBITS

Exhibit 1) Locations 73 and 74 (Canyon Falls amenity center, pool, and public park) and their approximate location to Lines C5 and C22 as well as the connecting node. With map.

Exhibit 2) Locations 73 and 74 74 (Canyon Falls amenity center, pool, and public park) and their approximate location to Line C8. With map.

Exhibit 3) Locations 64 through 72 (Canyon Falls residents) and their approximate location to Line C5. With map.

Exhibit 4) Location 62 (Preschool Kiddie Academy) and the approximate location to C5. With map.

Exhibit 5) Location 62 (Preschool Kiddie Academy) and the approximate location to C7. With map.

Exhibit 6) Canyon Falls Park and nature trails and the approximate location to C7. With map.

Exhibit 7) Reference Map of Line selection.

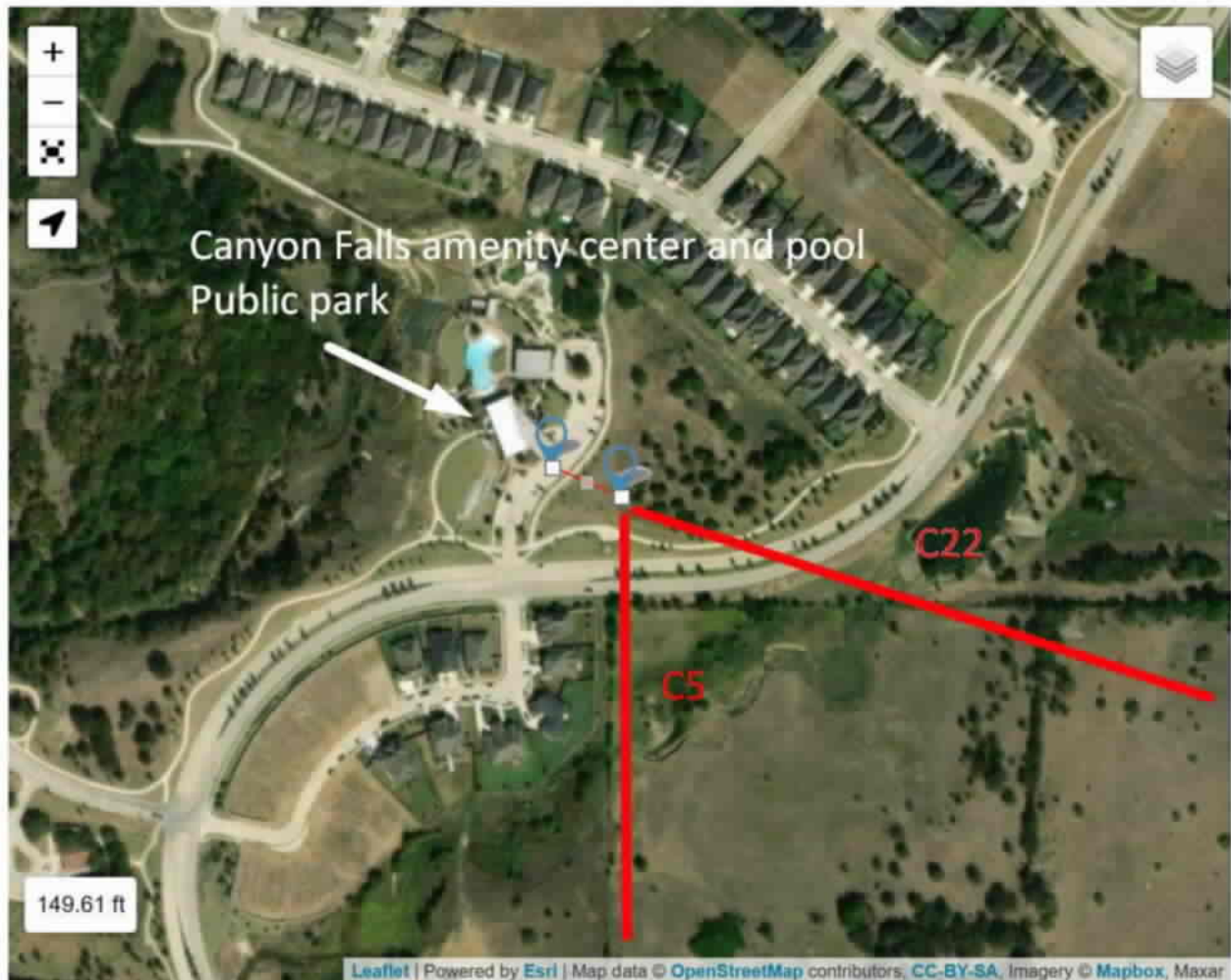


Exhibit 1 (Locations 73 and 74): Distance of 149.61 feet from the approximate location of C22 and C5 connection. This location includes the primary amenity center, pool, and public park with trails that are used heavily by Northlake, Argyle, and Flower Mound residents.

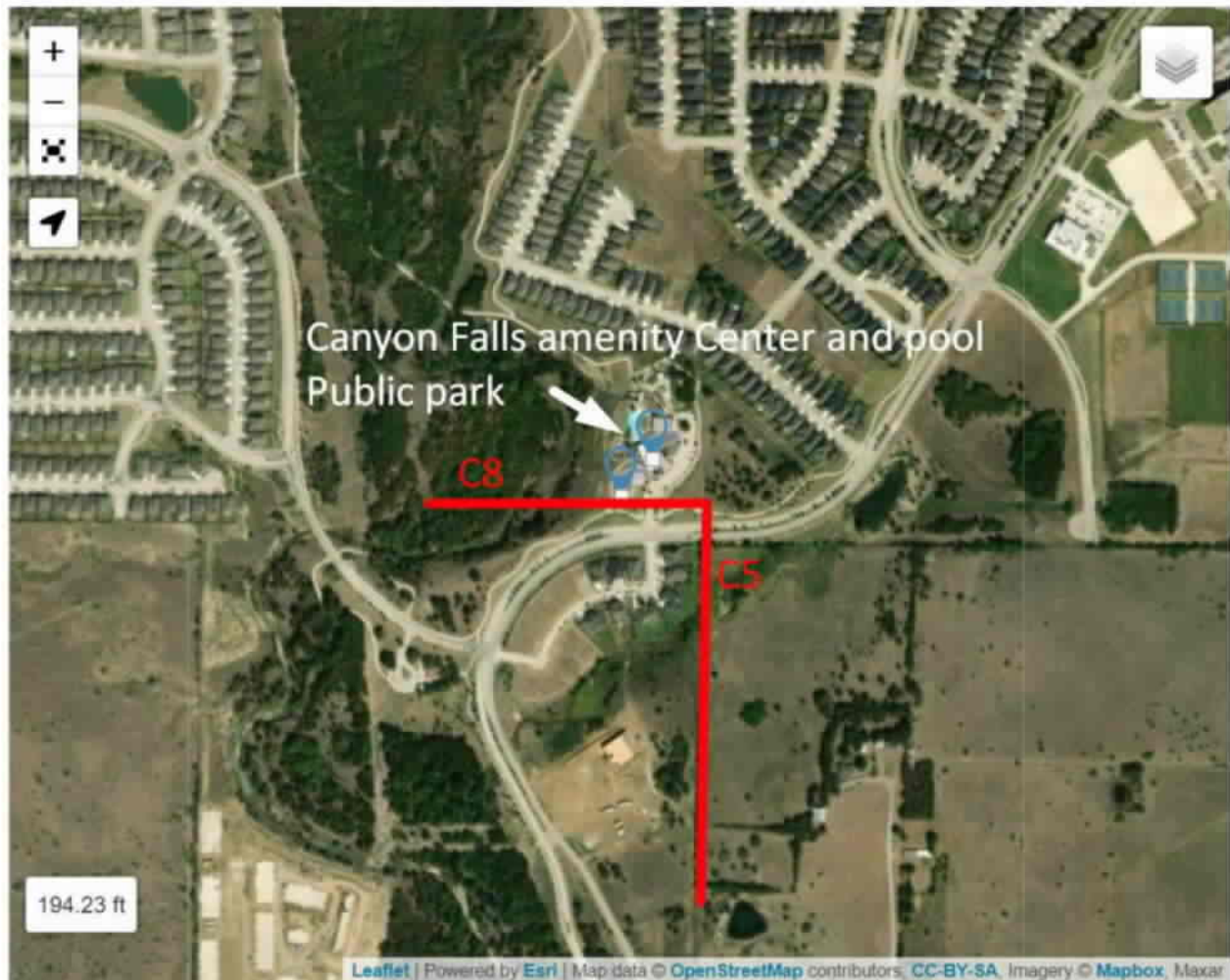


Exhibit 2 (Locations 73 and 74): Distance of 194.23 feet from the approximate location of C8. This location includes the primary amenity center, pool, and public park with trails that are used heavily by Northlake, Argyle, and Flower Mound residents.

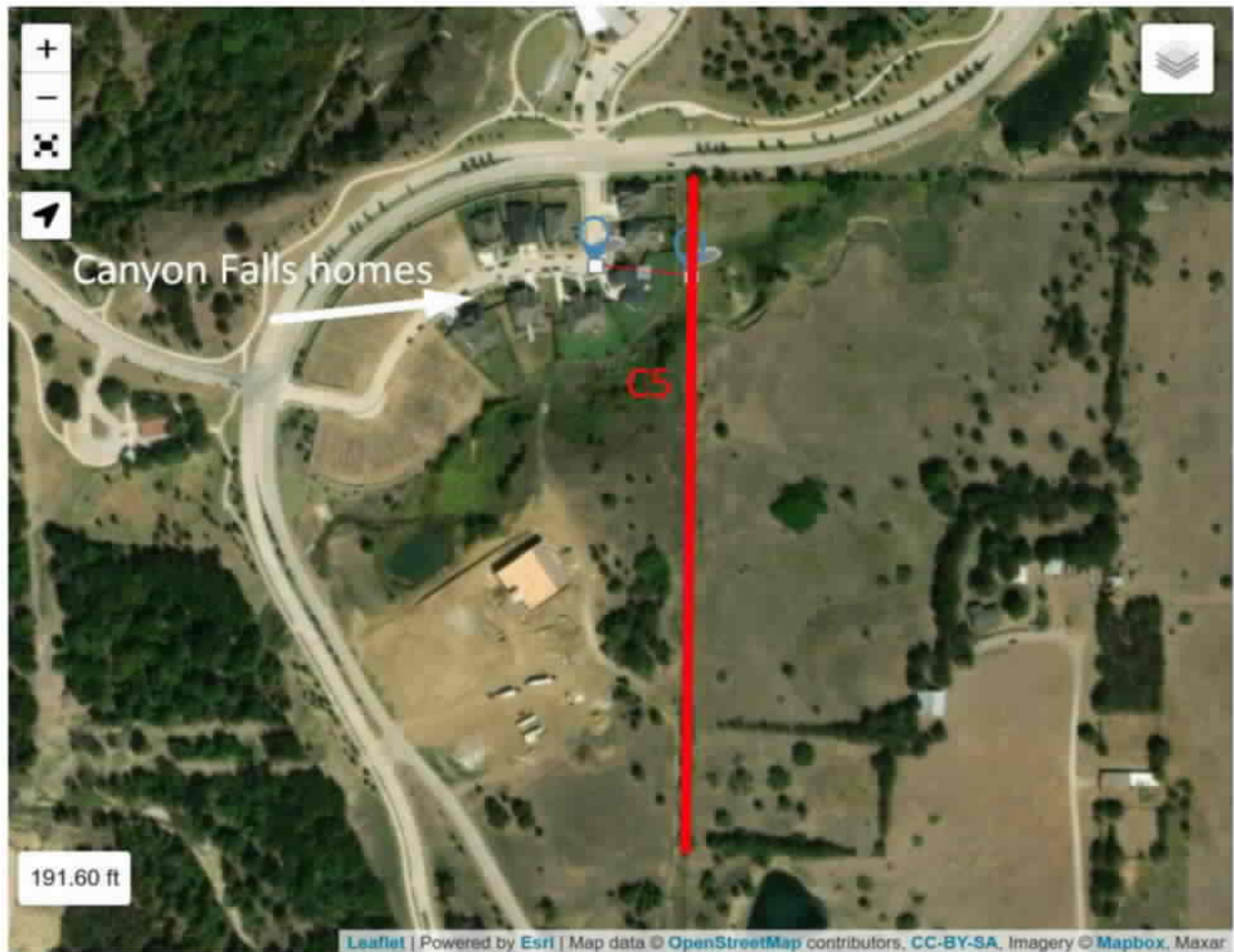


Exhibit 3 (Locations 64 through 72): Distance is 191.60 feet from the approximate location of E5 for residential property.

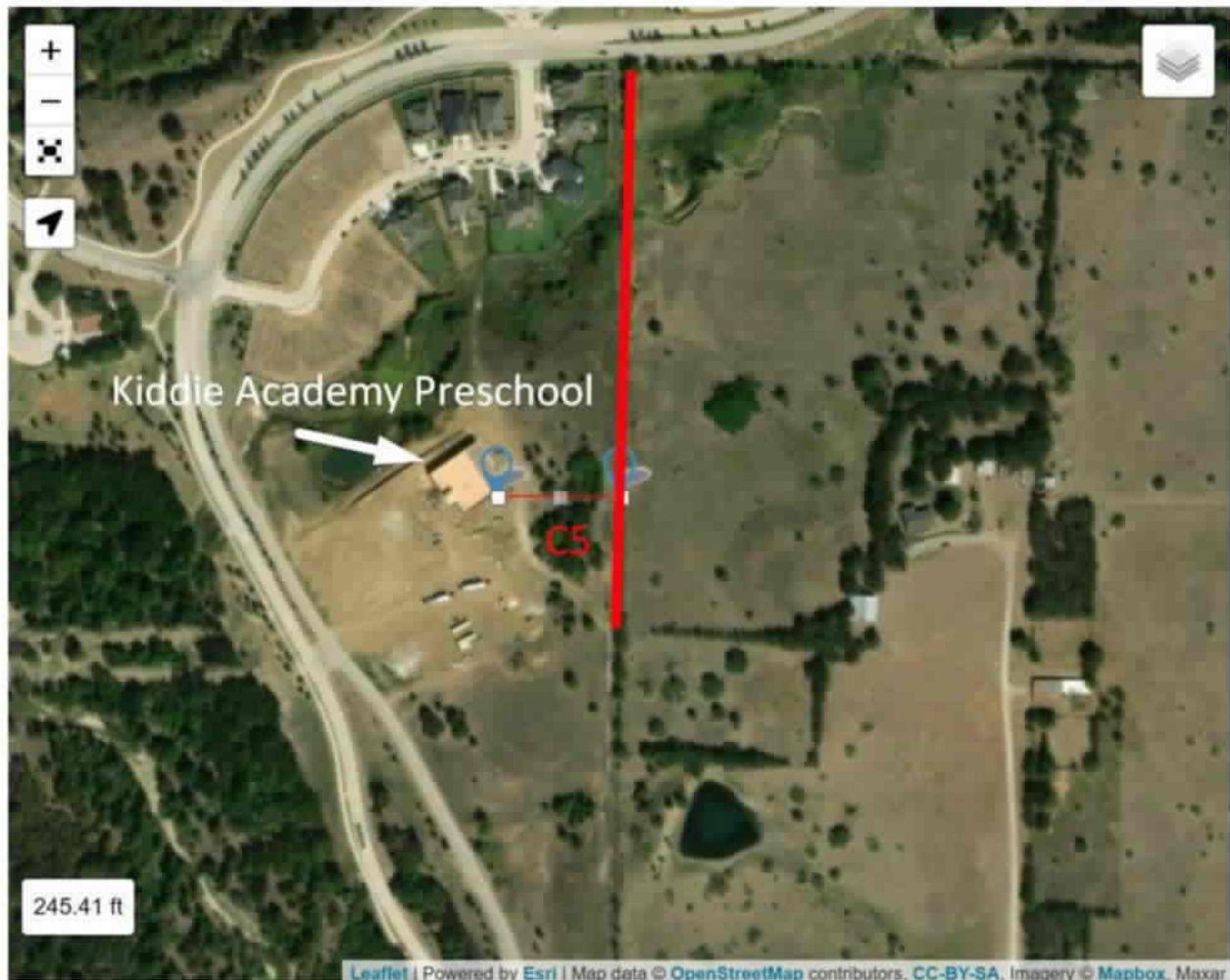


Exhibit 4 (Location 62): Distance is 245.41 feet from the approximate location of E5 and C23 and is located in close proximity of the community preschool, Kiddie Academy.

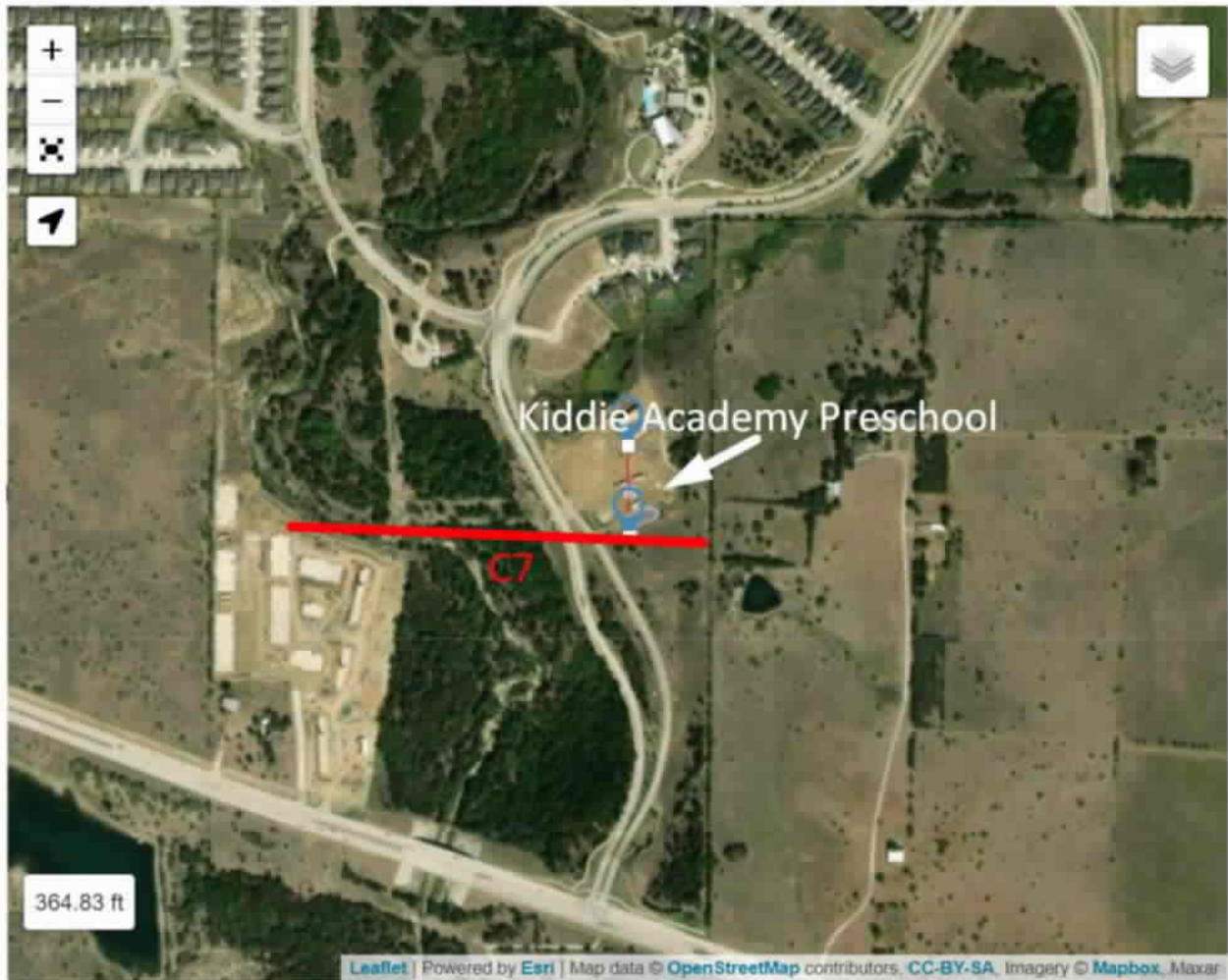


Exhibit 5 (Location 62): Distance is 364.83 feet from the approximate location of C7 of the community preschool (Kiddie Academy).



Exhibit 6 (Canyon Falls Park and nature trails): Distance is 521 feet from the approximate location of C7 and is located in close proximity to community walking trails, community hub, and dog park.



Exhibit 7: Reference Map