



## Filing Receipt

**Received - 2022-10-27 05:43:43 PM**

**Control Number - 54271**

**ItemNumber - 2**

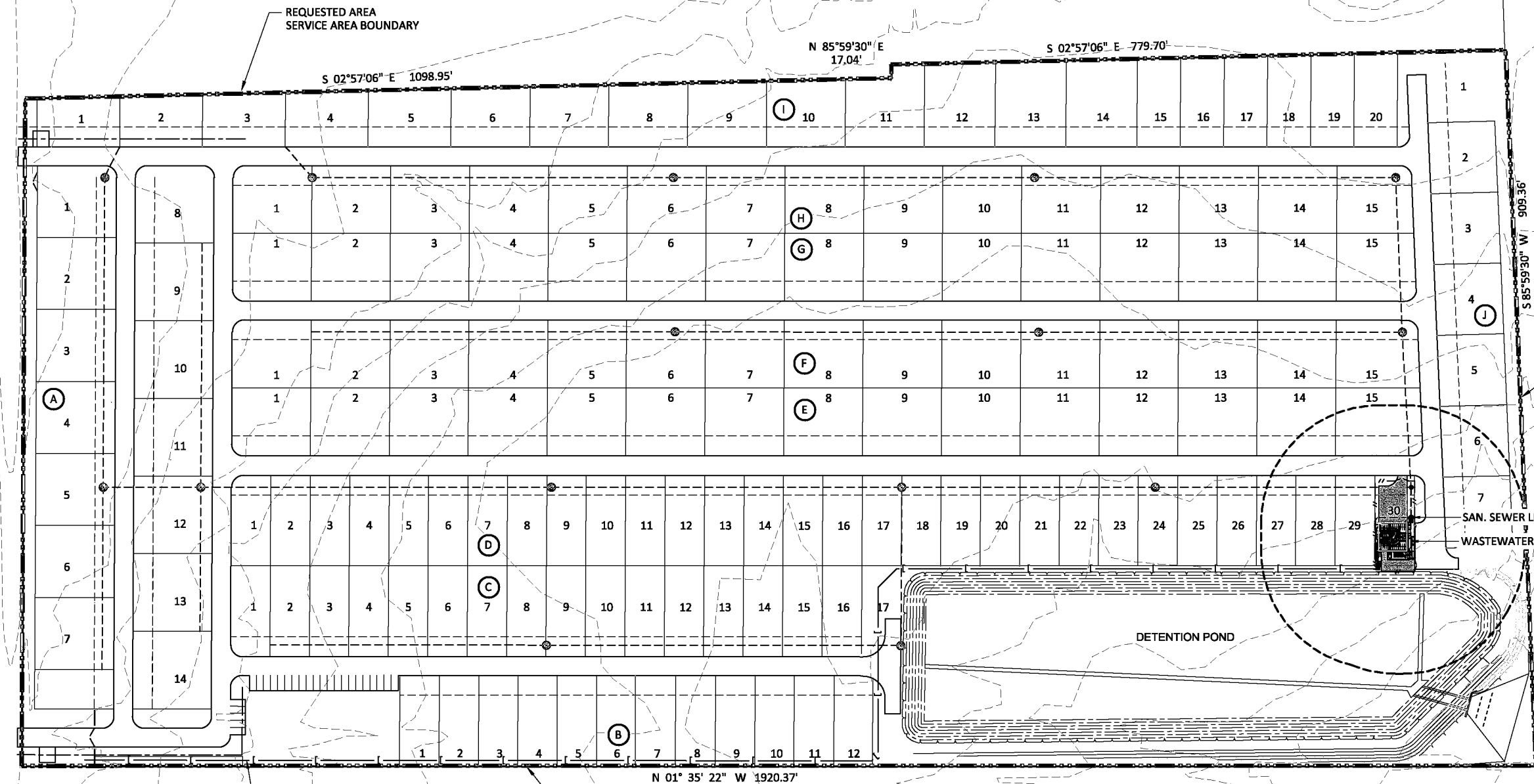
The following files are not convertible:

FACILITIES PLAN.bak  
FACILITIES PLAN.dwg

Please see the ZIP file for this Filing on the PUC Interchange in order to access these files.

Contact [centralrecords@puc.texas.gov](mailto:centralrecords@puc.texas.gov) if you have any questions.

KICKAPOO ROAD  
(POSSIBLE R.O.W. TAKING)



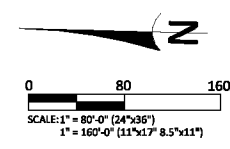
PROP. 6" HDPE EFFLUENT FORCE MAIN  
TO POINT OF DISCHARGE INTO  
BRUSHY CREEK @ FM 1488

REQUESTED AREA  
SERVICE AREA BOUNDARY

CALLED 19.38 ACRES  
VOL. 1382, PG 196

**LEGEND**

 REQUESTED AREA  
SERVICE AREA BOUNDARY



THIS DRAWING CONTAINS CONFIDENTIAL PROPRIETARY INFORMATION AND MAY NOT BE TRANSFERRED, REPRODUCED, OR USED TO CONSTRUCT ANY PROJECT OTHER THAN THAT FOR WHICH IT WAS ISSUED WITHOUT PRIOR PERMISSION FROM WATERENGINEERS, INC.

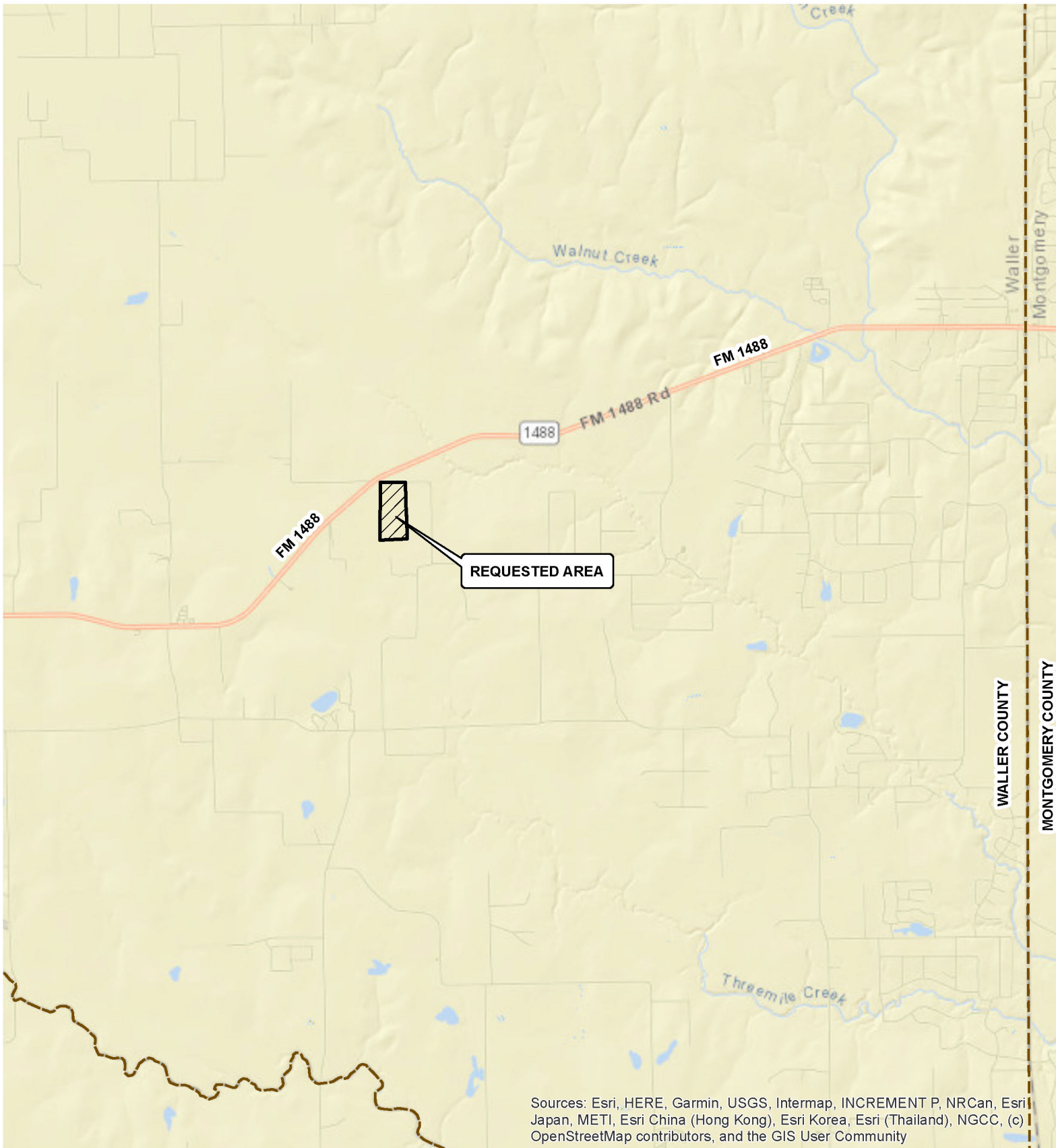
**WaterENGINEERS, INC.**  
Water & Wastewater Treatment Consultants  
TEXAS BOARD OF PROFESSIONAL ENGINEERS FIRM No. 2066  
17230 HUFFMEISTER ROAD TEL: 281-373-0500  
CYPRESS, TEXAS 77429 FAX: 281-373-1113

**APPLICATION FOR A SEWER CCN**  
APPLICANT: KICKAPOO UTILITY LLC

**FACILITIES MAP**

DRAWN BY: JLW	DWG. NO.:
APPROVED BY: DRY	<b>ATTACHMENT C</b>
SCALE: AS NOTED	
DATE: 10/10/2022	
JOB No.: 5743	

\\server\wtr\cad\purch\5743\kickapoo\_development(ccn)\facilities\_map.dwg



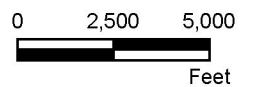
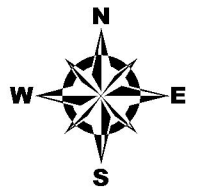
Sources: Esri, HERE, Garmin, USGS, Intermap, INCREMENT P, NRCan, Esri Japan, METI, Esri China (Hong Kong), Esri Korea, Esri (Thailand), NGCC, (c) OpenStreetMap contributors, and the GIS User Community

**ATTACHMENT F  
GENERAL LOCATION MAP**

**APPLICATION FOR A SEWER CCN**

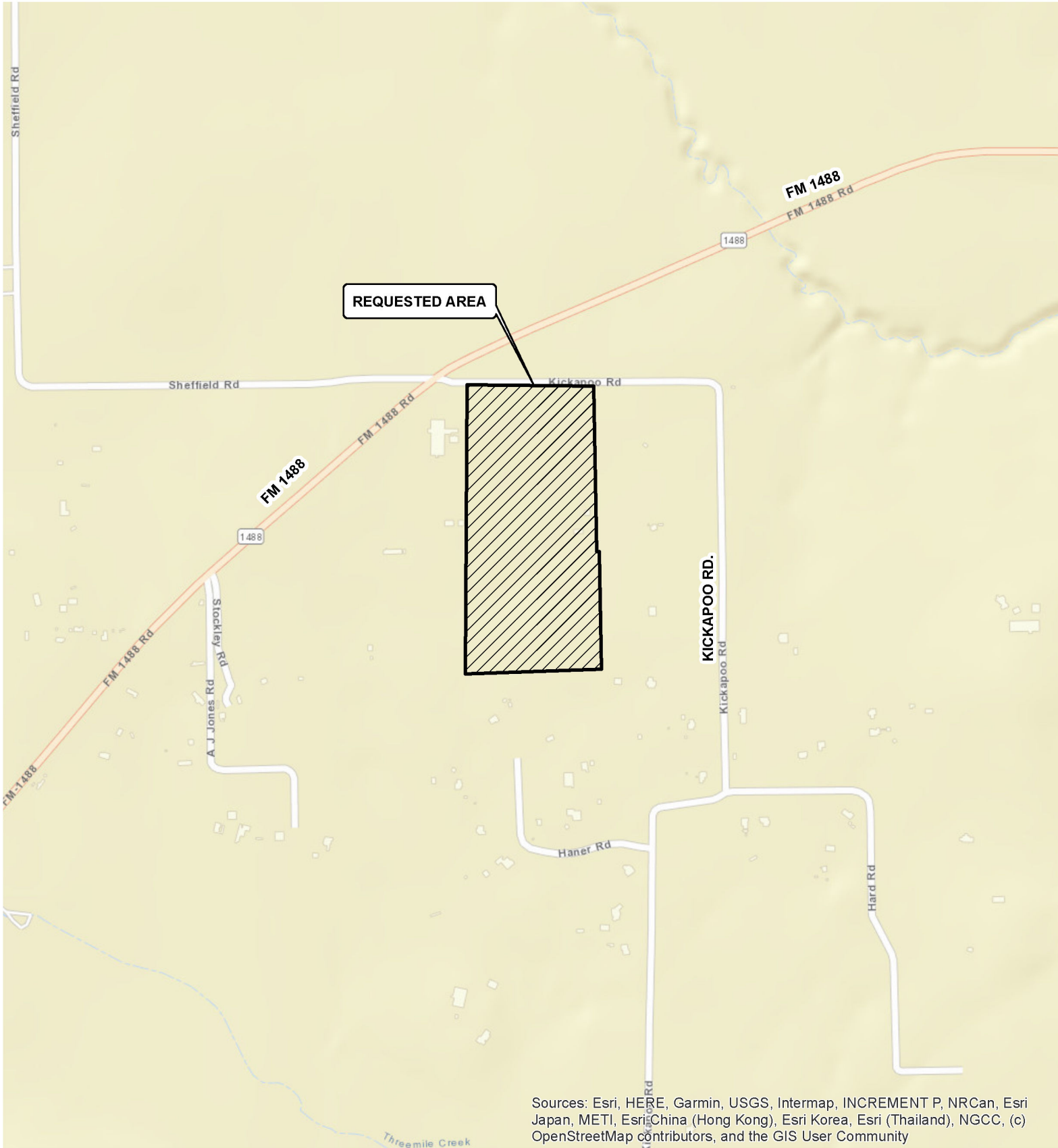
**APPLICANT: KICKAPOO UTILITY LLC**

**MONTGOMERY COUNTY, TEXAS**



**LEGEND**

 REQUESTED AREA



Sources: Esri, HERE, Garmin, USGS, Intermap, INCREMENT P, NRCan, Esri Japan, METI, Esri China (Hong Kong), Esri Korea, Esri (Thailand), NGCC, (c) OpenStreetMap contributors, and the GIS User Community

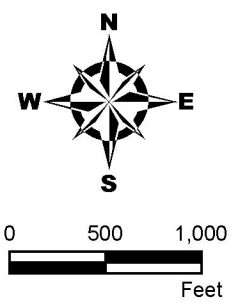
**ATTACHMENT G  
REQUESTED AREA MAP**

**APPLICATION FOR A SEWER CCN**

**APPLICANT: KICKAPOO UTILITY LLC**

**MONTGOMERY COUNTY, TEXAS**

**LEGEND**  
 REQUESTED AREA



The following files are not convertible:

requested area.bak  
requested area.cpg  
requested area.dbf  
requested area.dwg

Please see the ZIP file for this Filing on the PUC Interchange in order to access these files.

Contact [centralrecords@puc.texas.gov](mailto:centralrecords@puc.texas.gov) if you have any questions.

The following files are not convertible:

requested area.dwg.xml

Please see the ZIP file for this Filing on the PUC Interchange in order to access these files.

Contact [centralrecords@puc.texas.gov](mailto:centralrecords@puc.texas.gov) if you have any questions.

The following files are not convertible:

requested area.prj  
requested area.sbn  
requested area.sbx  
requested area.shp

Please see the ZIP file for this Filing on the PUC Interchange in order to access these files.

Contact [centralrecords@puc.texas.gov](mailto:centralrecords@puc.texas.gov) if you have any questions.



The following files are not convertible:

requested area.shp.xml

Please see the ZIP file for this Filing on the PUC Interchange in order to access these files.

Contact [centralrecords@puc.texas.gov](mailto:centralrecords@puc.texas.gov) if you have any questions.

The following files are not convertible:

requested area.shx

Please see the ZIP file for this Filing on the PUC Interchange in order to access these files.

Contact [centralrecords@puc.texas.gov](mailto:centralrecords@puc.texas.gov) if you have any questions.