

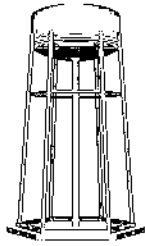


Filing Receipt

Filing Date - 2023-11-02 03:57:05 PM

Control Number - 53938

Item Number - 332



New Ulm Water Supply Corporation

P. O. Box 73

New Ulm, Texas 78950

Telephone: 979-992-3699

Ron Long, President
Doug Bergez, Vice President
Esther Hartman, Treasurer/Secretary

Susan Stone, Director
George Weatherall, Director

"This corporation is an equal opportunity provider and employer."

In accordance with Senate Bill 3, 87th Legislature, Regular Session; Texas Water Code (TWC) §13.1396; PUCT Project 54453; please note the following updated information:

UTILITY NAME: NEW ULM WATER SUPPLY CORPORATION
PWS ID #: 0080014
COUNTY: AUSTIN COUNTY
CCN #: 12417

EMERGENCY CONTACT INFORMATION:

MANAGER: ANASTASIA GREGOIRE PHONE #: 979-992-3699, 512-699-2699
OPERATOR: JONATHAN FRNKA PHONE #: 979-203-0647

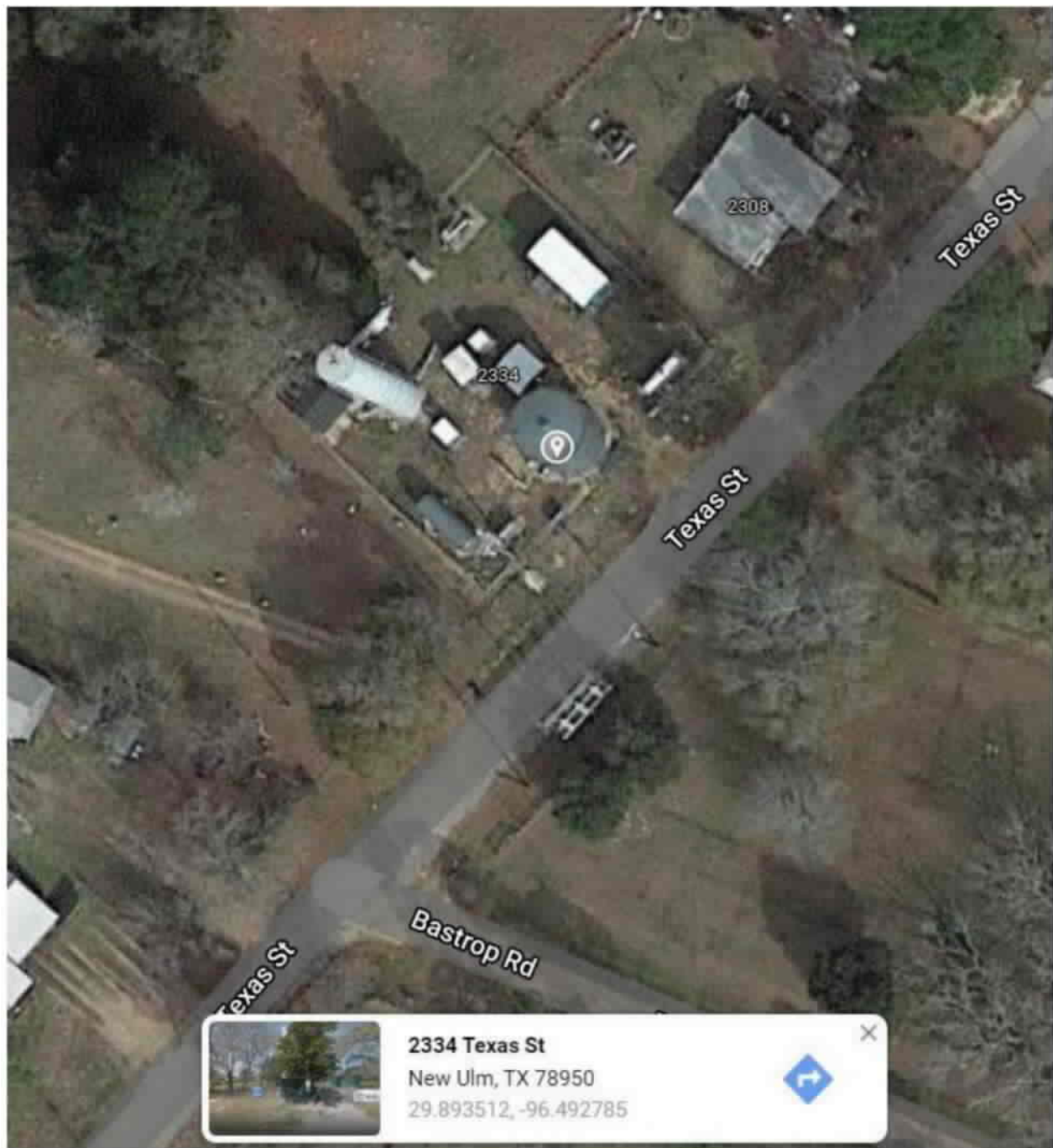
MAILING ADDRESS: PO BOX 73, NEW ULM, TX 78950
OFFICE ADDRESS: 510 ELM ST, NEW ULM, TX 78950
OFFICE PHONE #: 979-992-3699

FACILITIES LIST:

1. TEXAS ST WATER PLANT & WELL #3
 - a. 2334 TEXAS ST, NEW ULM 78950
 - b. 29.893512, -96.492785
 - c. BLUEBONNET ELECTRIC METER #: 66352585
 - d. This facility contains our entire water plant, including our water tank, pressure tank, standpipe, chlorination system, and our most recent well, Well #3. We also have a backup generator and 1000-gallon propane tank.
 - e. See Image #1
2. BERNARD RD SEWER PLANT
 - a. 24506 BERNARD RD, NEW ULM 78950
 - b. 29.886672, -96.478314
 - c. BLUEBONNET ELECTRIC METER #: 93373541
 - d. This facility contains our wastewater treatment plant, including our sewage treatment plant, backup generator, 1000-gallon propane tank, sewer line jetting machine, backup generator trailer with small propane tank (for lift stations).
 - e. See Image #2
3. TRACK RD WELL #2
 - a. 1264 TRACK RD, NEW ULM 78950
 - b. 29.893637, -96.496220
 - c. BLUEBONNET ELECTRIC METER #: 92494159
 - d. This facility contains our older well, well #2.
 - e. See Image # 3
4. MISSOURI ST LIFT STATION
 - a. NW CORNER ELM/MISSOURI, NEW ULM 78950
 - b. 29.893284, -96.488734
 - c. BLUEBONNET ELECTRIC METER #: 93373944
 - d. This facility is the lift station for the sewer plant for this side of town.
 - e. See Image # 4
5. WALNUT DR LIFT STATION
 - a. WALNUT DR @ RAILROAD ST, NEW ULM 78950
 - b. 29.888164, -96.488586
 - c. BLUEBONNET ELECTRIC METER #: 15676508
 - d. This facility is the lift station for the sewer plant for this side of town.
 - e. See Image # 5

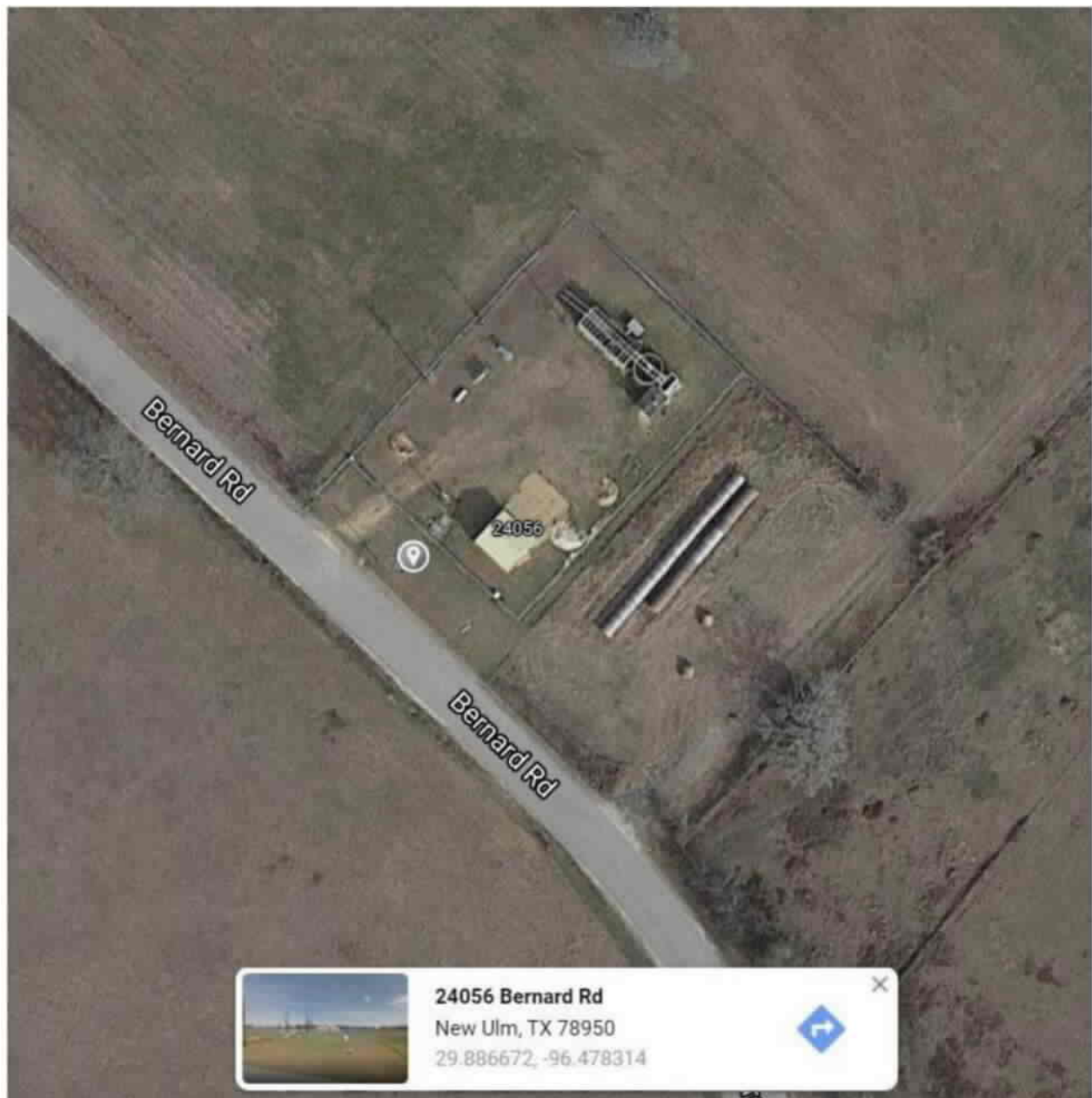
FACILITY IMAGES

1. IMAGE #1: TEXAS ST WATER PLANT & WELL #3



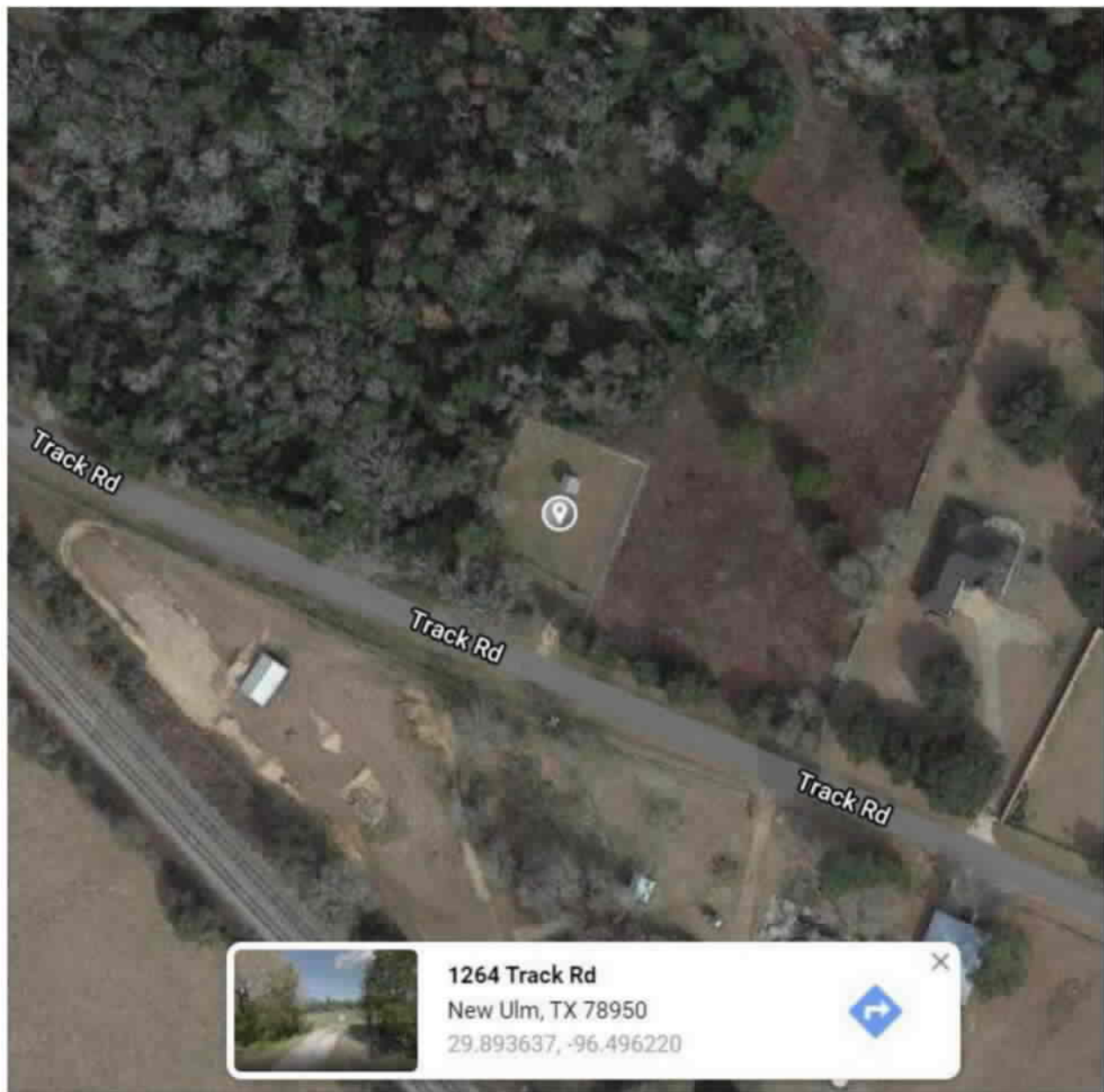
FACILITY IMAGES

2. IMAGE #2: BERNARD RD SEWER PLANT



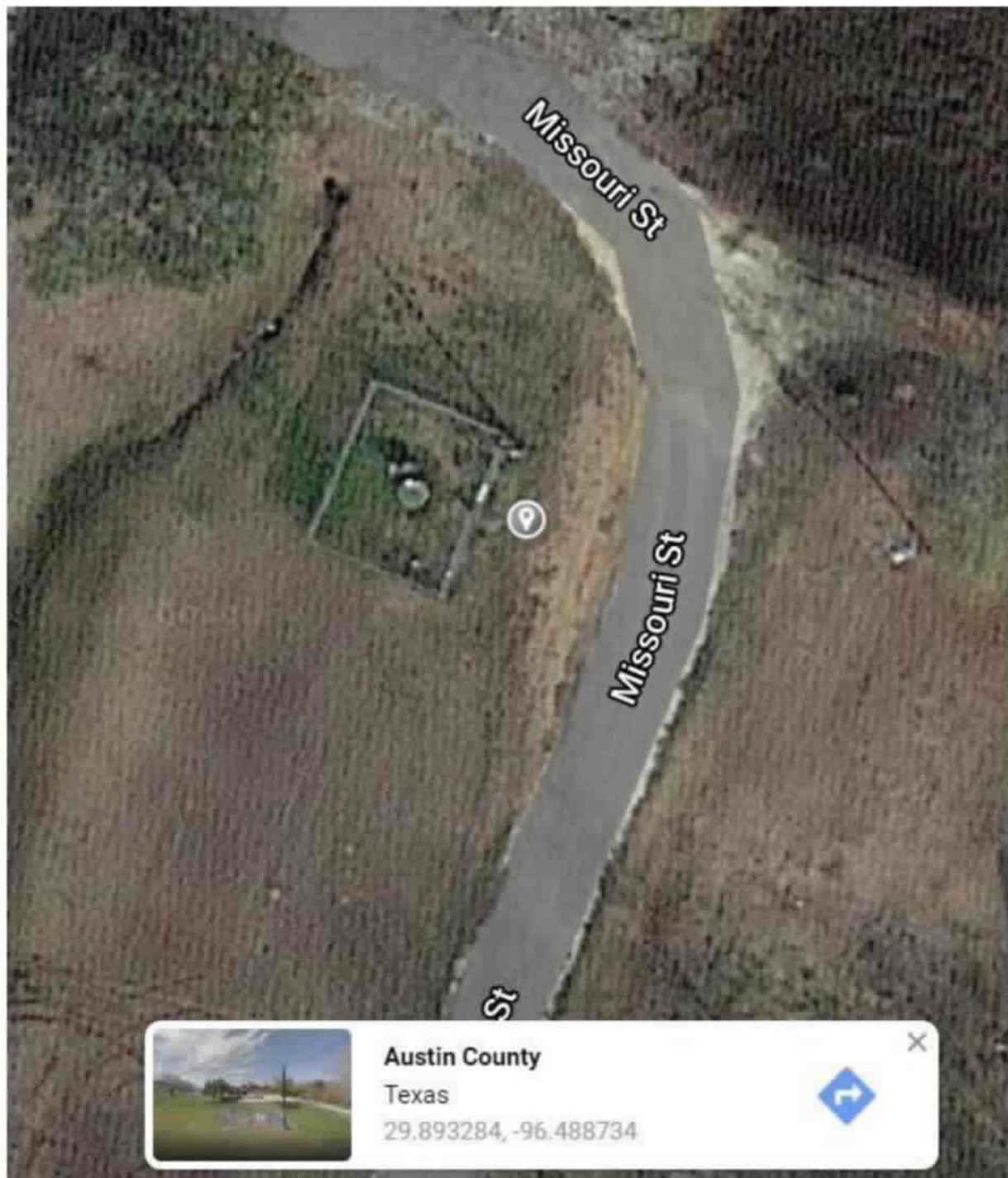
FACILITY IMAGES

3. IMAGE #3: TRACK RD WELL #2



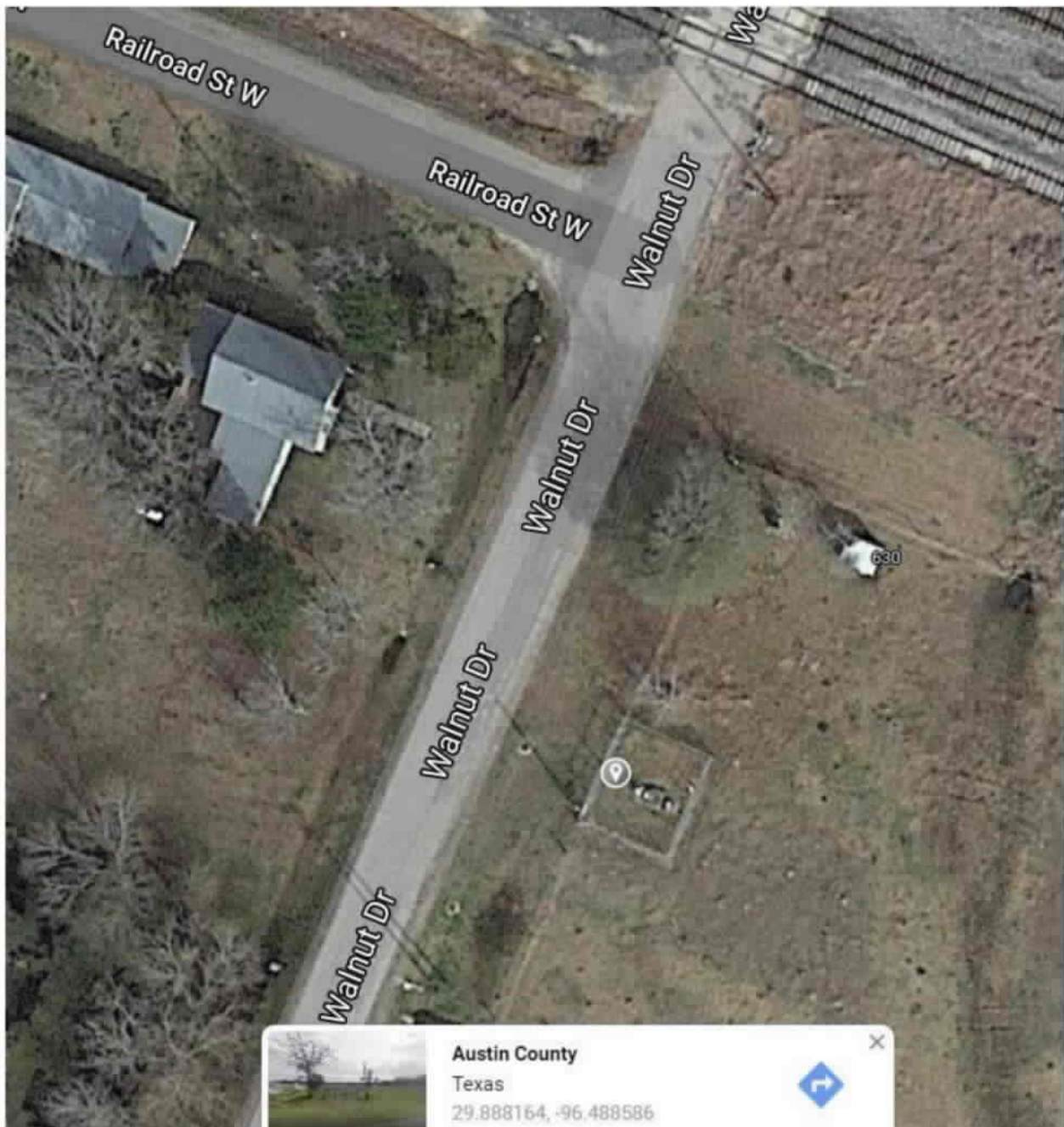
FACILITY IMAGES

4. IMAGE #4: MISSOURI ST LIFT STATION



FACILITY IMAGES

5. IMAGE #5: WALNUT DR LIFT STATION



FACILITY IMAGES

6. IMAGE #6: FULL MAP OF ALL FACILITIES

