

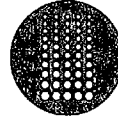


## Filing Receipt

**Received - 2022-05-23 03:14:13 PM**

**Control Number - 53472**

**ItemNumber - 9**



**Texas Water Utilities**

Monarch

**A SouthWest Water Company**

12535 Reed Road  
Sugar Land, TX 77478  
Email: TXCustomerCare@swwc.com  
Phone: 866.654.7992  
www.swwc.com

May 12, 2022

Public Utility Commission of Texas  
Attention: Filing Clerk  
1701 Congress Avenue  
P.O. Box 13326  
Austin, Texas 78711-3326

Re: Docket No. 53472 - Application of Monarch Utilities I L.P. to Amend its Certificates of Convenience and Necessity and Transfer Service Area from Johnson County Special Utility District and Mountain Peak Special Utility District in Johnson County

**MONARCH UTILITIES I L.P.'s RESPONSE TO THE COMMISSION STAFF'S FIRST REQUEST FOR INFORMATION TO MONARCH UTILITIES I L.P.- QUESTION NOS. STAFF 1-1 THROUGH STAFF 14**

To the Commission:

Monarch Utilities I L.P. (Monarch) files its Responses to the Commission Staff's First Request for Information (RFI) to Monarch received on May 3, 2022. This response is timely filed. Monarch agrees and stipulates that all parties may treat the responses as if the answers were filed under oath.

**Staff 1-1** Please provide a detailed map(s) identifying the location of all the following items:

- Boundary of Monarch Utilities I L.P.'s existing water CCN No. 12983;
- Boundary of the requested areas in the current docket;
- Boundaries of city limits and extraterritorial jurisdiction for neighboring cities;
- Potential customers requesting service within the requested areas; and
- Existing customers within the requested area.

**Response:** See the map attached as Staff RFI 1-1 showing the locations and boundaries in response to questions 1-1 a, 1-1 b, and 1-1 c. In response to 1-1 d, at this time there are no requests for new service within the requested area. See the map attached as Staff RFI 1-2 showing the existing customers in response to question 1-1 e.

Prepared by: George Freitag, P.E.  
Sponsored by: George Freitag, P.E.

**Staff 1-2** Please provide a detailed map identifying the location of the following items within the boundaries of the existing CCN and requested areas, identify each map and boundary:

- Existing water facilities for production, transmission, distribution, collection, and treatment; and
- Proposed water facilities for production, transmission, distribution, collection, and treatment.

Note: Facilities should be identified on subdivision plats, engineering planning maps, or detailed maps. Please use color coding to distinguish different types of facilities and boundaries.

**Response:** See the map attached as Staff RFI 1-2.

Prepared by: George Freitag, P.E.  
Sponsored by: George Freitag, P.E.

**Staff 1-3** Please provide a copy of each map that Monarch Utilities I L.P. uses to respond to RFI 1 and 2 in the following forms:

- a. Hard copy, full-sized, and rendered to scale; and
- b. Electronically file a copy, in an Adobe PDF file format, to the Commission Interchange Filer.

**Response:** Hard copies of the maps will be provided via 1<sup>st</sup> Class mail following the Commission's filing procedures. Electronic copies in Adobe PDF format are included with this response.

Prepared by: George Freitag  
Sponsored by: George Freitag

**Staff 1-4** Provide any requests for service to support the need for service in the requested area.

**Response:** At this time there are no requests for new service within the requested area. There are existing customers currently receiving service as shown on the map provided in response to Staff RFI 1-2.

Prepared by: George Freitag  
Sponsored by: George Freitag

Monarch believes these responses to RFIs 1-1 through 1-4 do adequately respond to the Staff's questions, however, please contact us if additional information is needed.

Respectfully submitted,

*/s/ George Freitag*

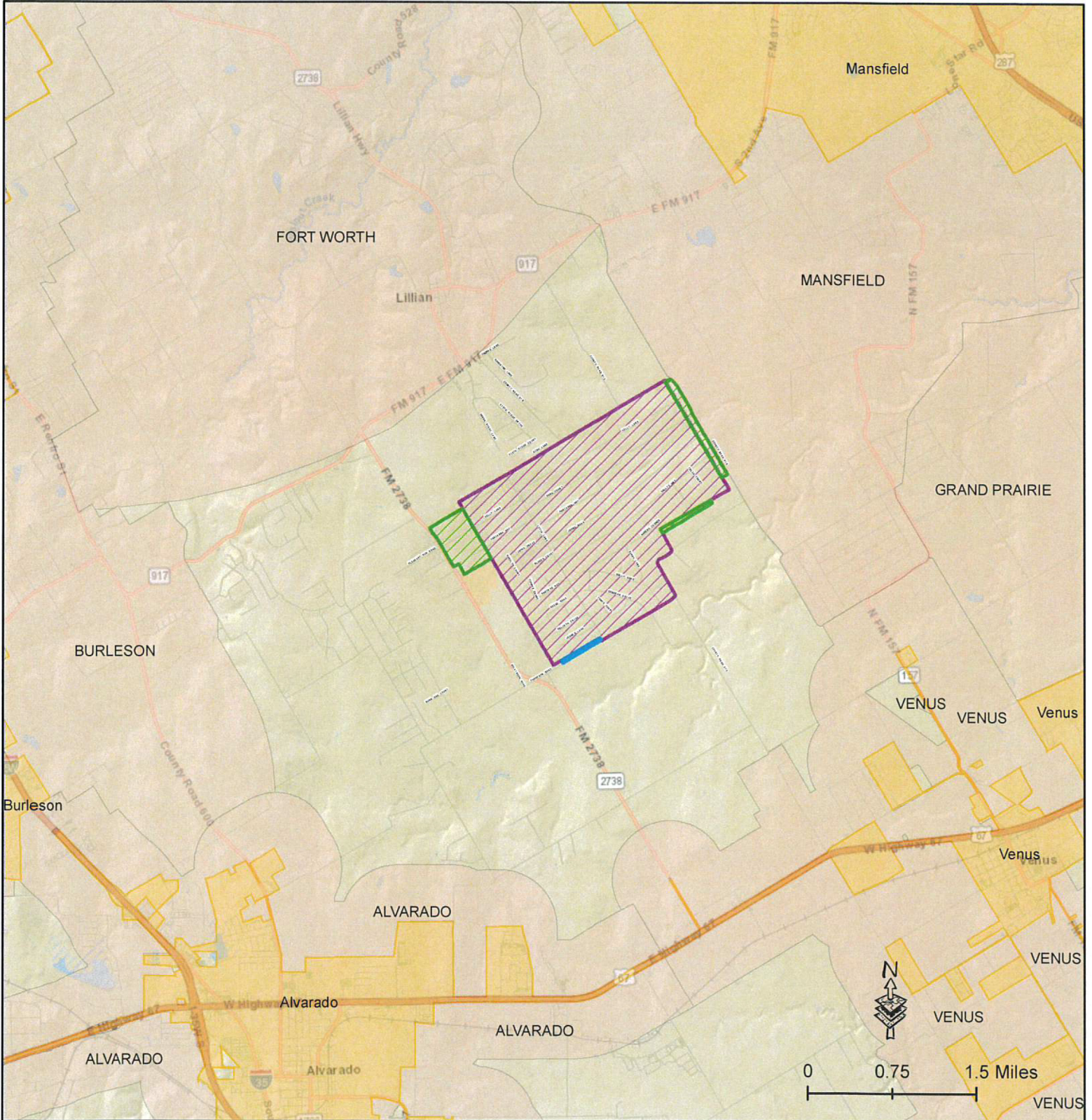
George Freitag, P.E.  
Texas Regulatory Manager  
Texas Water Utilities  
Monarch Utilities I L.P.  
[gfreitag@swwc.com](mailto:gfreitag@swwc.com)

Attachments








# Docket 53472 Application to Amend Monarch Utilities I LP CCN 12983 Metroplex Homesteads in Johnson County

## Staff RFI 1-1



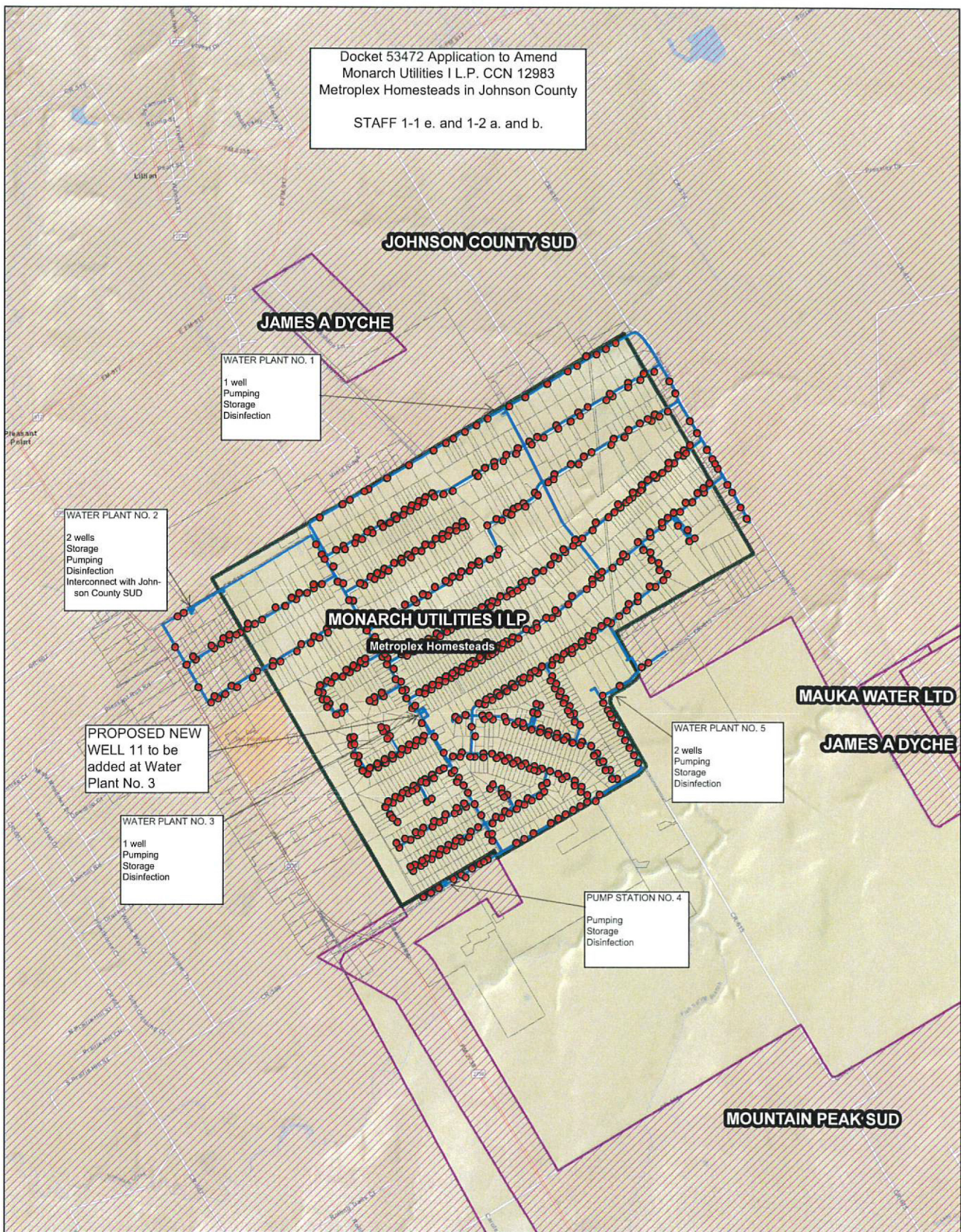
### CCN Areas to Amend

-  Cities
-  ETJ\_Boundaries
-  Decertify from CCN 10081 (Johnson County SUD) and Amend to CCN 12983 (Monarch) - 154 Acres
-  Decertify from CCN 10908 (Mountain Peak SUD) and Amend to CCN 12983 (Monarch) - 6 Acres
-  Existing CCN Boundary



Docket 53472 Application to Amend  
 Monarch Utilities I L.P. CCN 12983  
 Metroplex Homesteads in Johnson County

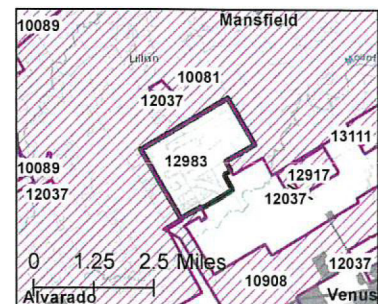
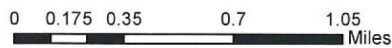
STAFF 1-1 e. and 1-2 a. and b.



**Legend**

- Cities
- Parcels
- Service Connection
- Service Lines
- Mains
- PUCT-Approved CCN Area**
- All Other Utilities
- Monarch PUCT CCN Area

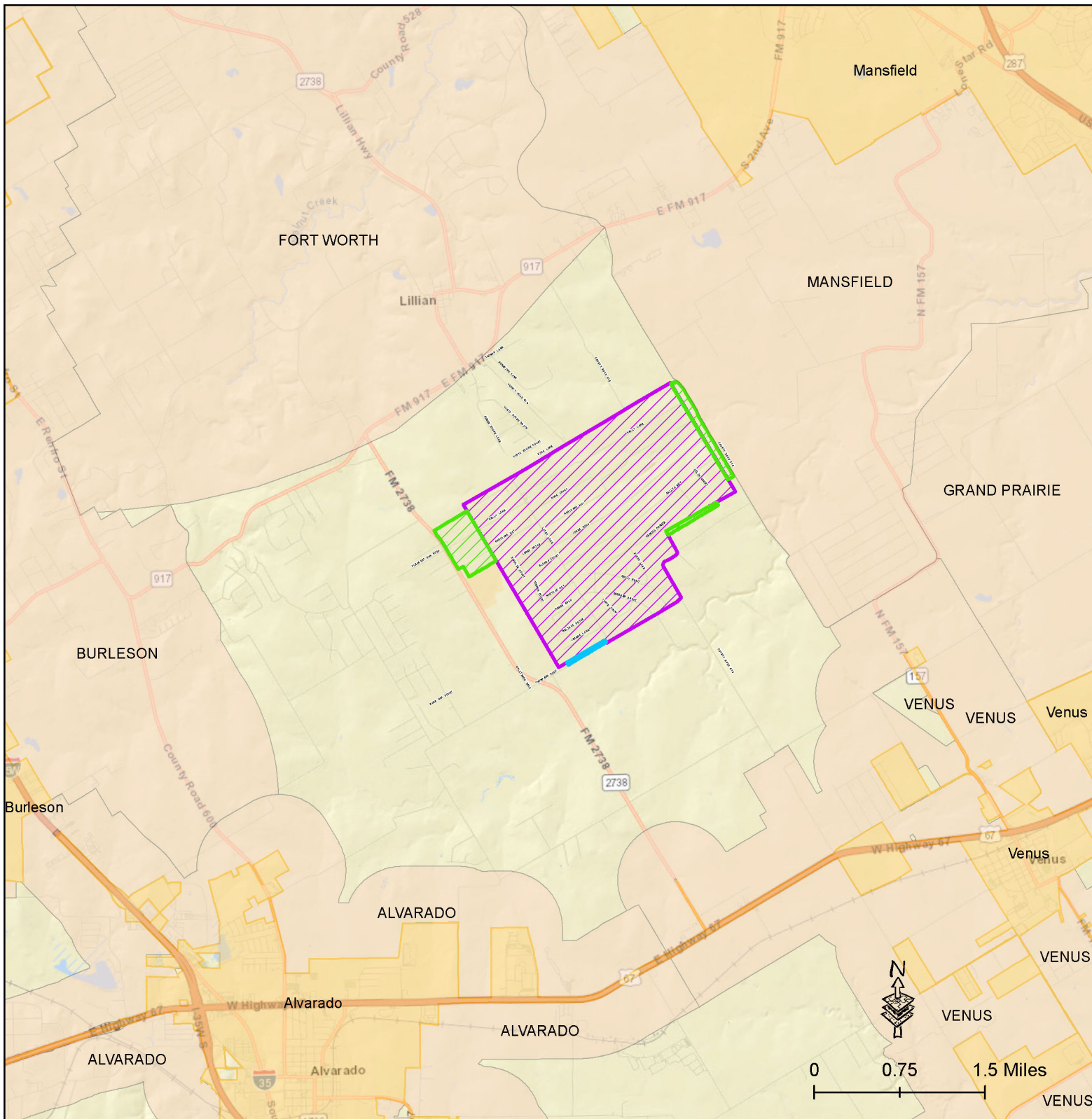
**Metroplex Homesteads**










# Docket 53472 Application to Amend Monarch Utilities I LP CCN 12983 Metroplex Homesteads in Johnson County

## Staff RFI 1-1



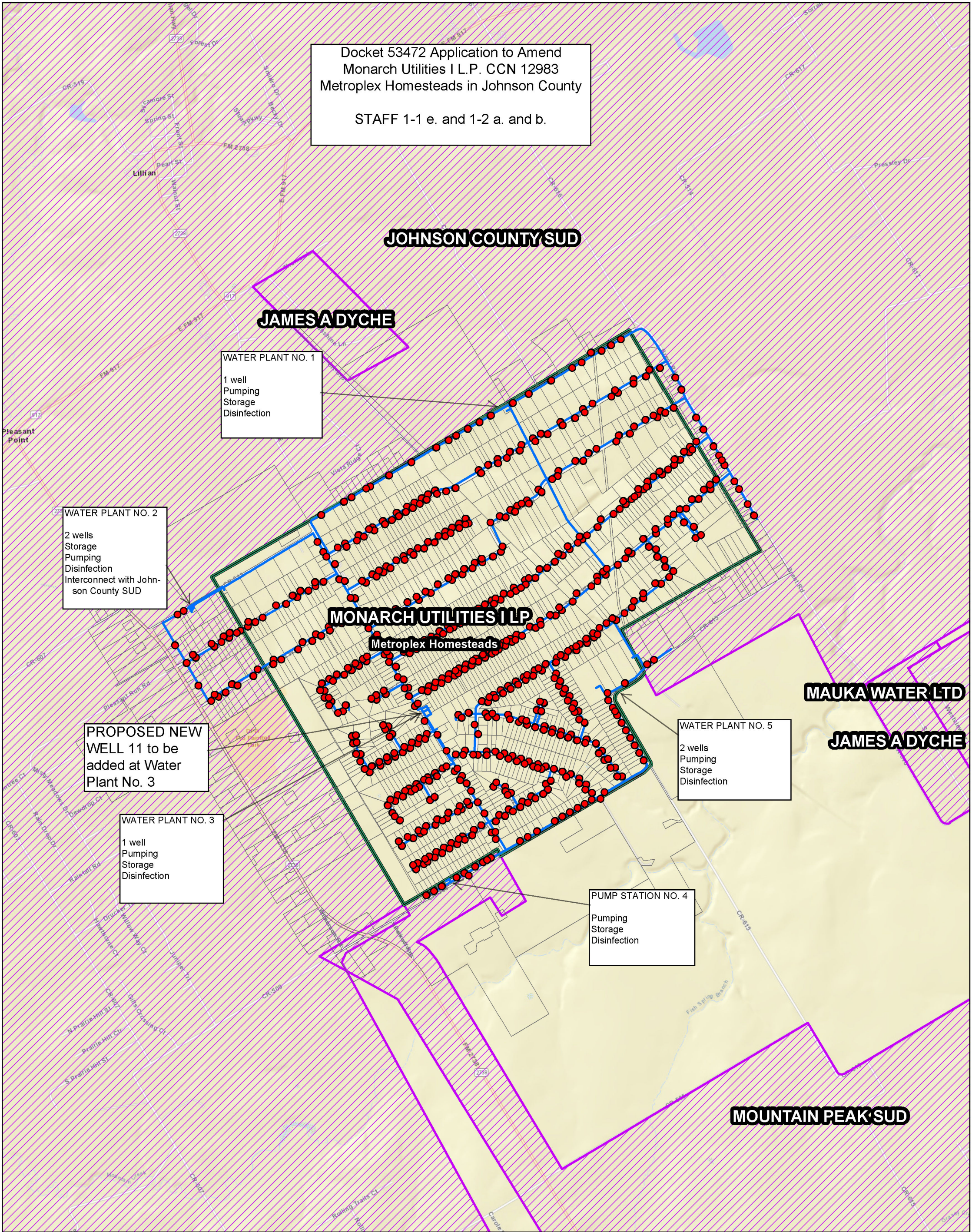
### CCN Areas to Amend

-  Cities
-  ETJ\_Boundaries
-  Decertify from CCN 10081 (Johnson County SUD) and Amend to CCN 12983 (Monarch) - 154 Acres
-  Decertify from CCN 10908 (Mountain Peak SUD) and Amend to CCN 12983 (Monarch) - 6 Acres
-  Existing CCN Boundary



Docket 53472 Application to Amend  
 Monarch Utilities I L.P. CCN 12983  
 Metroplex Homesteads in Johnson County

STAFF 1-1 e. and 1-2 a. and b.



**Legend**

- Cities
- Parcels
- Service Connection
- Service Lines
- Mains

**PUCT-Approved CCN Area**

- All Other Utilities
- Monarch PUCT CCN Area

**Metroplex Homesteads**

0 0.175 0.35 0.7 1.05 Miles

N

