

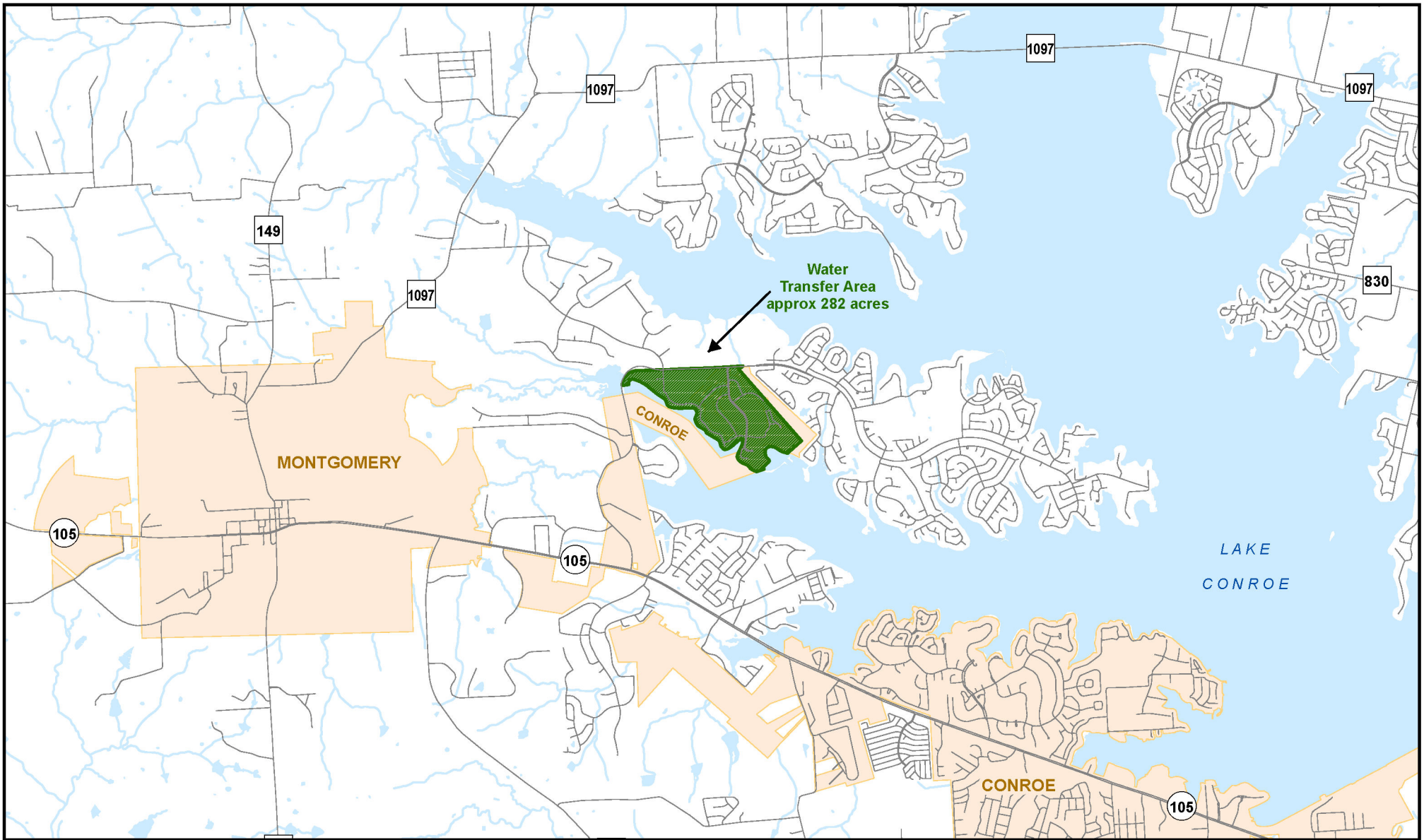


Filing Receipt

Received - 2022-08-11 12:23:18 PM

Control Number - 52797

ItemNumber - 76



General Location - Water

Undine Texas, LLC
 Application to Transfer Conroe Resort Utilities, LLC, CCN No. 11942 to Undine Texas, LLC, CCN Nos. 13260
 in Montgomery County

Requested Water Transfer Area

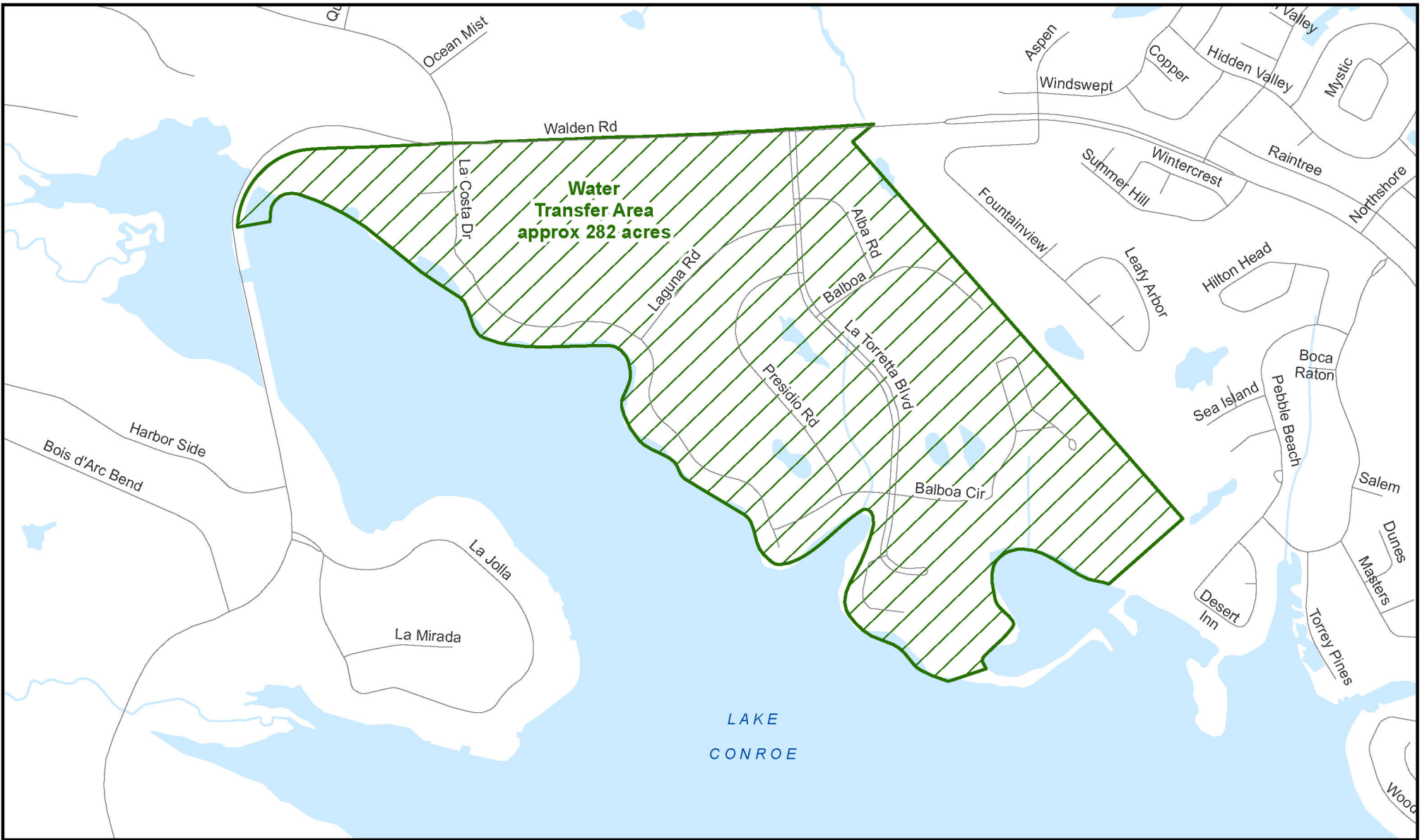
 CCN 11942 - Conroe Resort Utilities, LLC - approx 282 acres



0 0.5 1
 Miles

Map by: S. Burt, ASBGI
 Date: August 8, 2022
 Base: StratMapTransv2

Project: Conroe Resort General Location Water.mxd

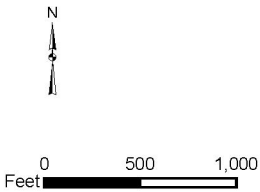


Detail Map - Water

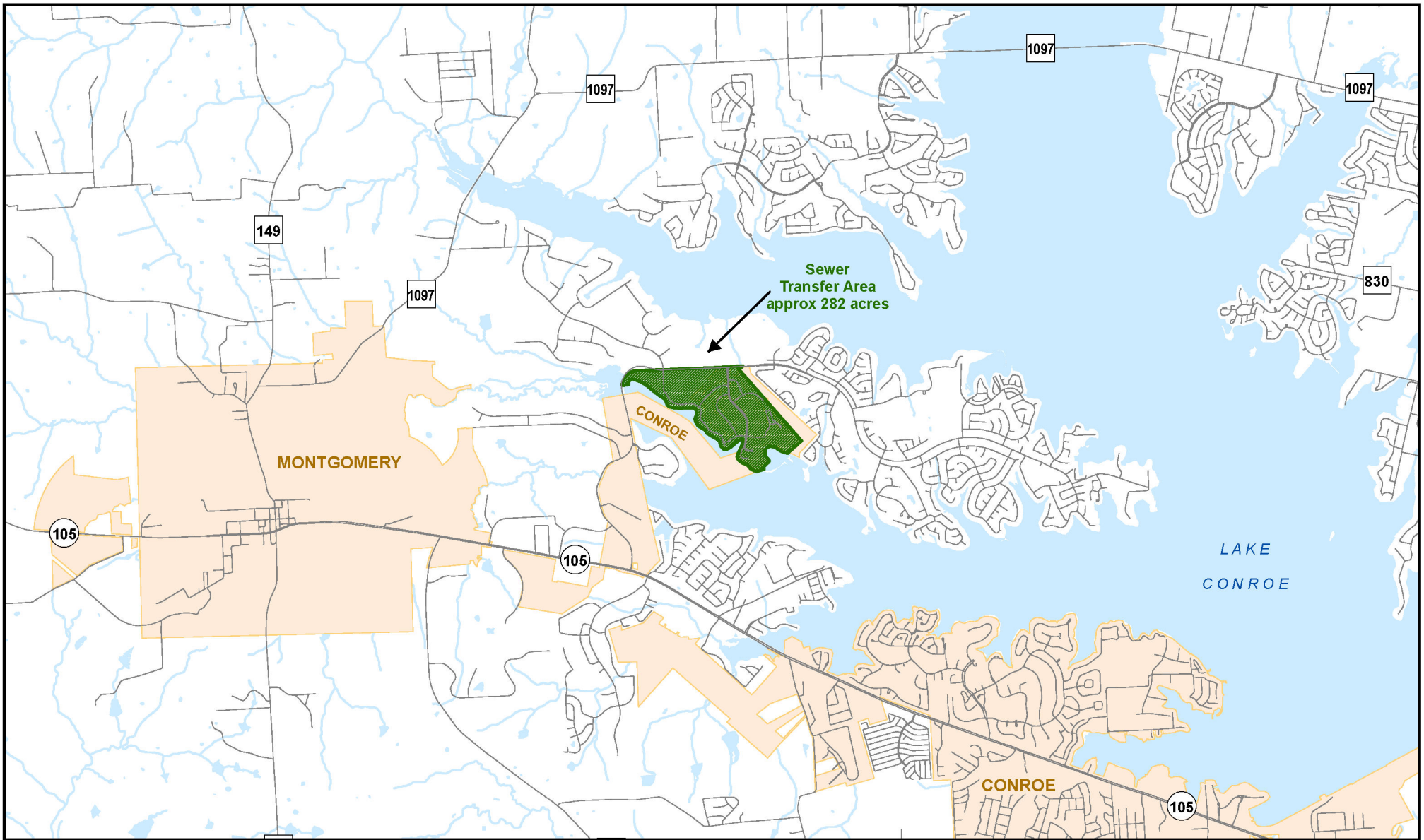
Undine Texas, LLC
 Application to Transfer Conroe Resort Utilities, LLC, CCN No. 11942 to Undine Texas, LLC, CCN No. 13260
 in Montgomery County

Requested Water Transfer Area

 CCN 11942 - Conroe Resort Utilities, LLC - approx 282 acres




Map by: S. Burt, ASBGI
 Date: August 8, 2022
 Base: StratMapTransv2
 Project: Conroe Resort Detail Map-Water.mxd

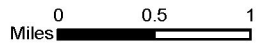


General Location - Sewer

Undine Texas Environmental, LLC
 Application to Transfer Conroe Resort Utilities, LLC, CCN No. 20638 to Undine Texas Environmental, LLC, CCN No. 21026
 in Montgomery County

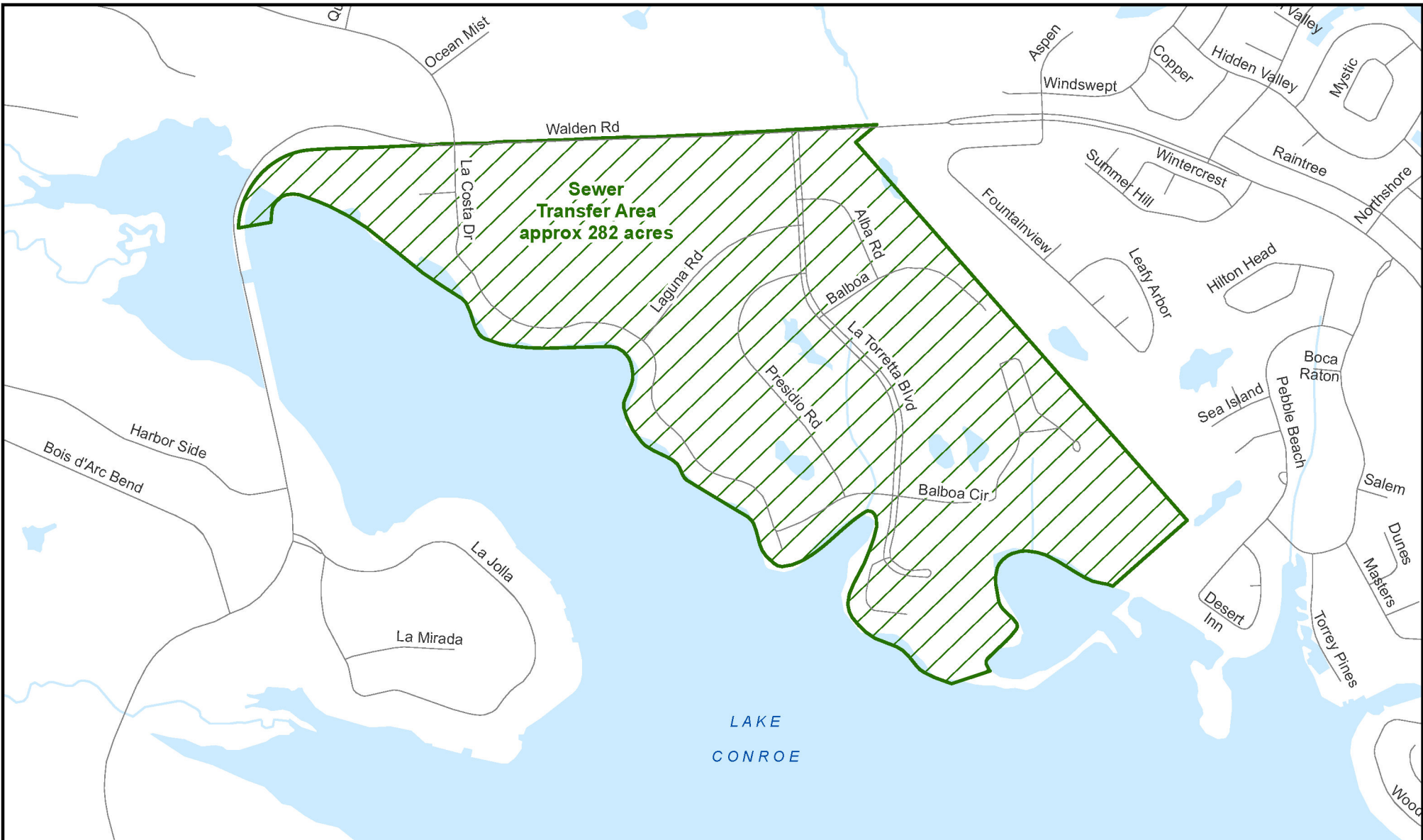
Requested Sewer Transfer Area

 CCN 20638 - Conroe Resort Utilities, LLC - approx 282 acres



Map by: S. Burt, ASBGI
 Date: August 8, 2022
 Base: StratMapTransv2

Project: Conroe Resort General Location Sewer.mxd

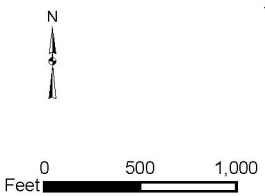


Detail Map - Sewer

Undine Texas Environmental, LLC
 Application to Transfer Conroe Resort Utilities, LLC, CCN No. 20638 to Undine Texas Environmental, LLC, CCN No. 21026
 in Montgomery County

Requested Sewer Transfer Area

 CCN 20638 - Conroe Resort Utilities, LLC - approx 282 acres



Map by: S. Burt, ASBGI
 Date: August 8, 2022
 Base: StratMapTransv2
 Project: Conroe Resort Detail Map-Sewer.mxd