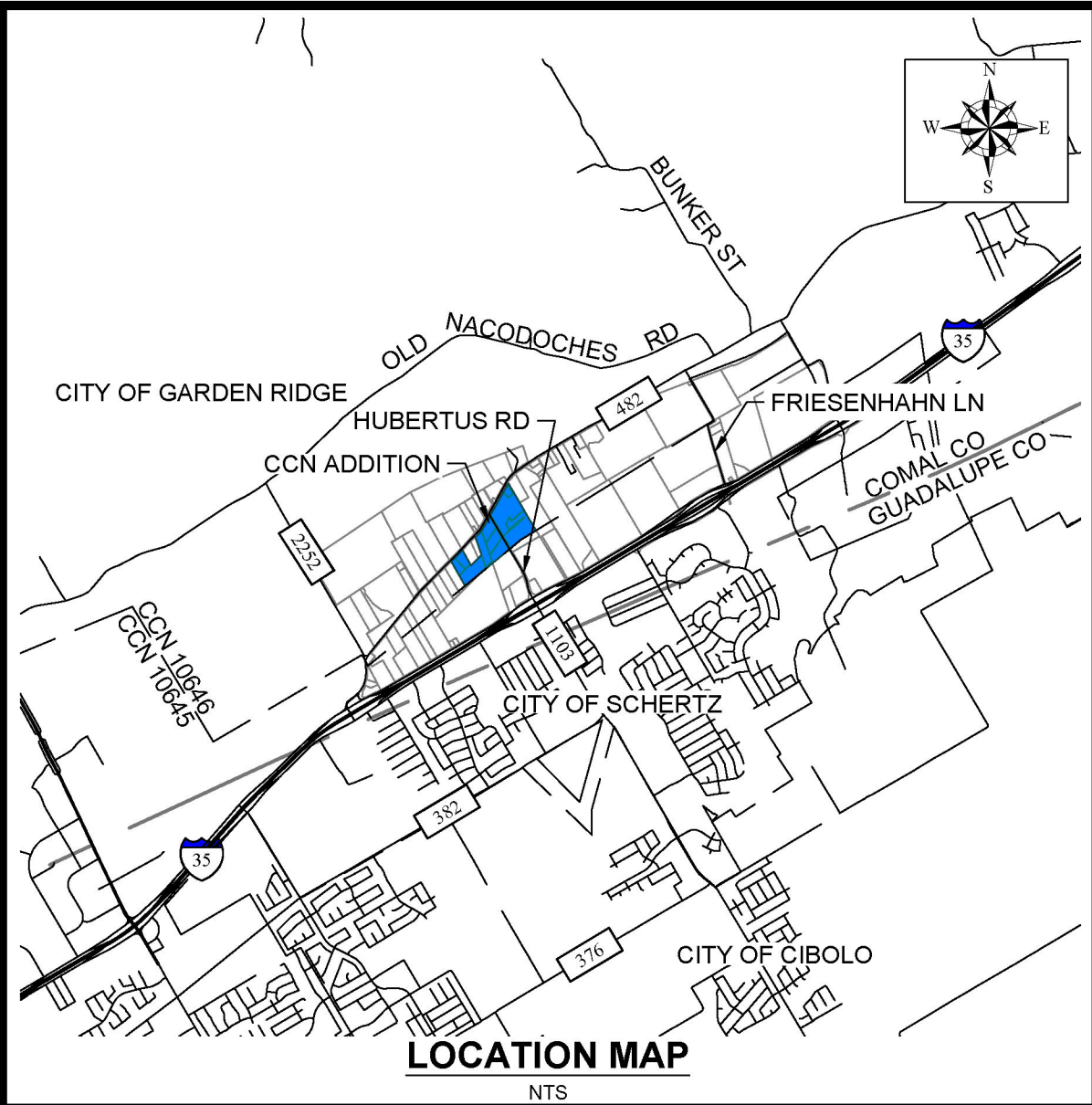




Filing Receipt

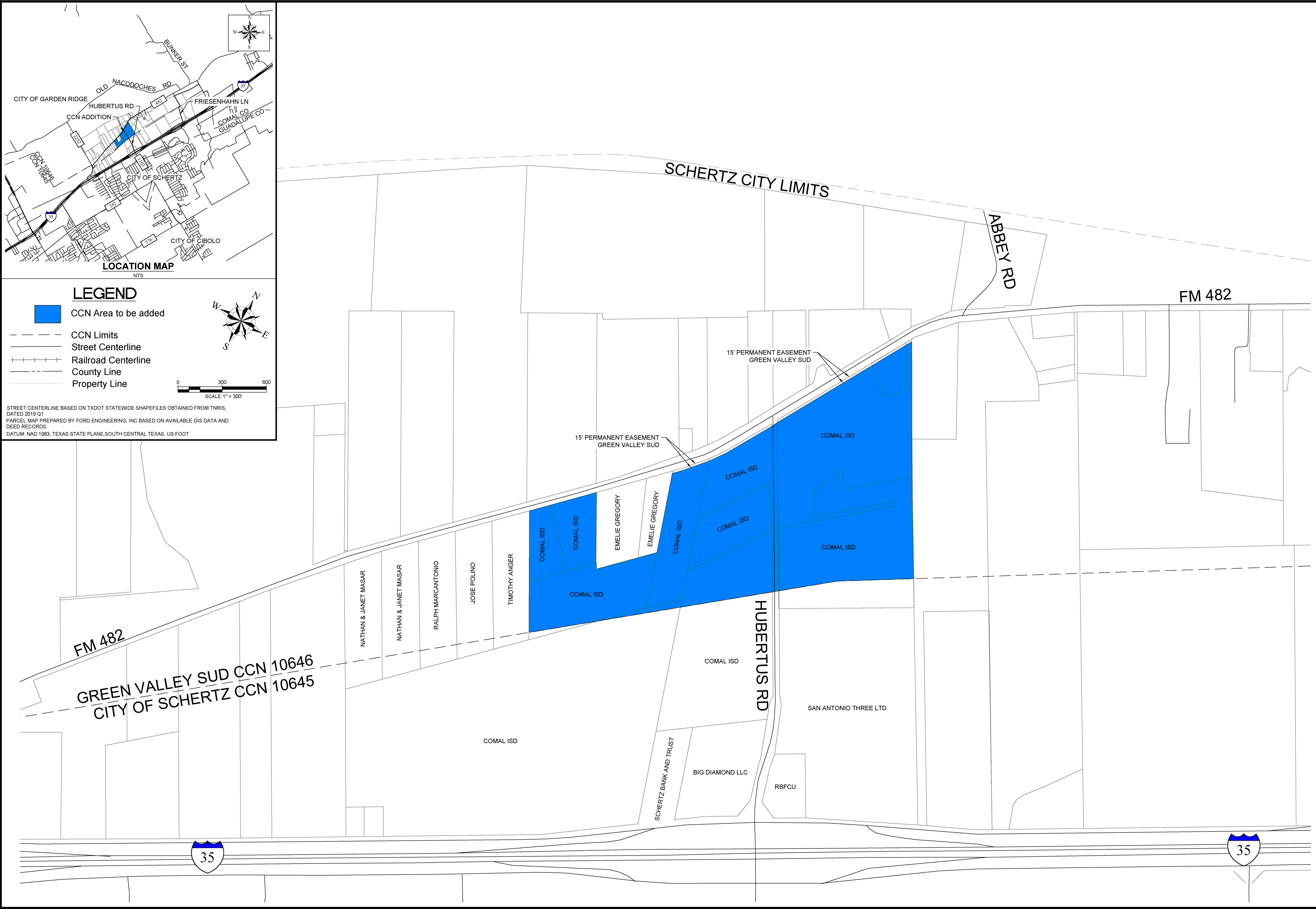
Received - 2021-10-14 09:55:08 AM
Control Number - 52666
ItemNumber - 3



LEGEND

- CCN Area to be added
- CCN Limits
- Street Centerline
- Railroad Centerline
- County Line
- Property Line

STREET CENTERLINE BASED ON TXDOT STATEWIDE SHAPEFILES OBTAINED FROM TNRIS, DATED 2019 Q1
PARCEL MAP PREPARED BY FORD ENGINEERING, INC BASED ON AVAILABLE GIS DATA AND DEED RECORDS.
DATUM: NAD 1983, TEXAS STATE PLANE, SOUTH CENTRAL TEXAS, US FOOT

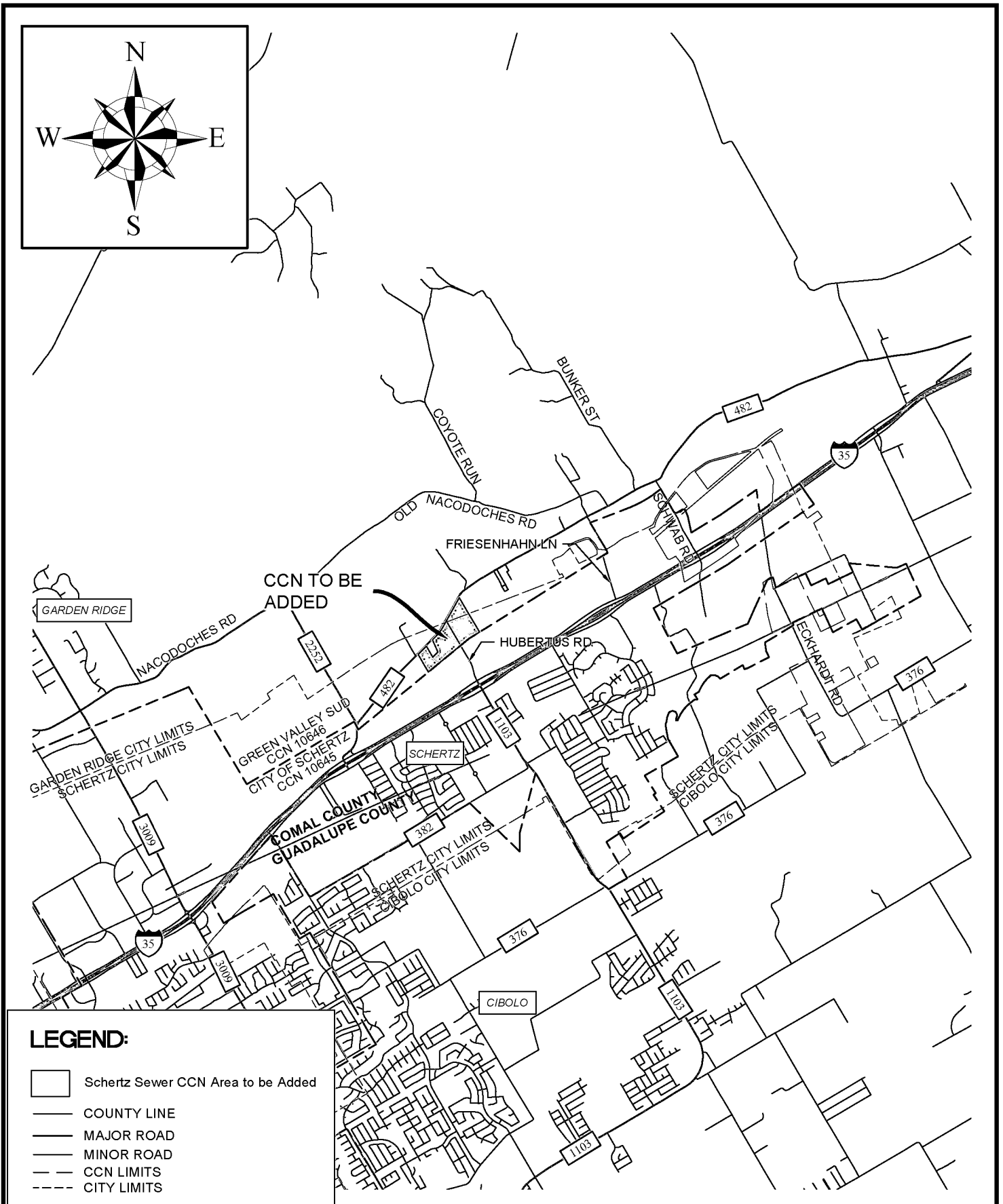
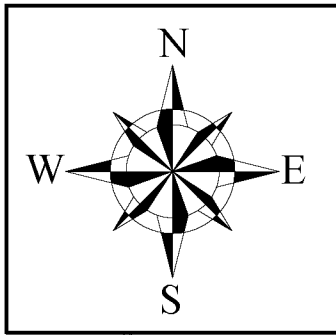


CITY OF SCHERTZ'S REQUESTED AREAS
FOR WATER CCN
CCN WATER - 10645

DATE: 6/2/21
FEI PROJ. 1124.9413

FORD ENGINEERING INC.

ENGINEERING * SURVEYING * PLANNING
10927 WYE DRIVE, STE 104, SAN ANTONIO, TEXAS 78217 * P. (210) 590-4777 * F. (210) 590-4940
TBPE No. 11623 * WWW.FORDEENGINEERING.COM * TBFLS No. 10018400



LEGEND:

- Schertz Sewer CCN Area to be Added
- COUNTY LINE
- MAJOR ROAD
- MINOR ROAD
- CCN LIMITS
- CITY LIMITS



FORD ENGINEERING INC.

ENGINEERING • SURVEYING • PLANNING
10827 WYDE DRIVE, STE 104, SAN ANTONIO, TEXAS 78217 • P: (210) 590-4777 • F: (210) 590-4940
TBPE No. 11623 • WWW.FORDENGINEERING.COM • TBPLS No. 10018400

GENERAL LOCATION MAP

**CITY OF SCHERTZ'S REQUESTED AREAS
FOR WATER CCN 10645
FM 482, NEW BRAUNFELS, TX 78132**

SCALE: 1" = 1 mile

DATE: June 1, 2021

PROJECT NO. 1124.9413

The following files are not convertible:

CCN ADJUSTMENT 10645.cpg
CCN ADJUSTMENT 10645.dbf
CCN ADJUSTMENT 10645.idx
CCN ADJUSTMENT 10645.prj
CCN ADJUSTMENT 10645.sbn
CCN ADJUSTMENT 10645.sbx
CCN ADJUSTMENT 10645.shp
CCN ADJUSTMENT 10645.shx

Please see the ZIP file for this Filing on the PUC Interchange in order to access these files.

Contact centralrecords@puc.texas.gov if you have any questions.