



Filing Receipt

Received - 2021-10-08 11:25:49 AM
Control Number - 52542
ItemNumber - 5

COATS | ROSE

A PROFESSIONAL CORPORATION

NATALIE SCOTT
DIRECTOR

NSCOTT@COATSROSE.COM
DIRECT: (512) 541-3846
FAX: (512) 469-9408

October 08, 2021

Public Utility Commission of Texas
P.O Box 13326
Austin, Texas 78711-3326

Via Electronic Filing

Re: PUC Docket No. 52542; *Petition by Mesquoakee Ranch, LLC for Expedited Release Pursuant to Texas Water Code Section 13.2541*; Public Utility Commission of Texas

Dear Sir or Madam:

Petitioner files the attached high-resolution and/or full-sized maps, to avoid any mapping deficiencies in the referenced docket, as follows:

1. Exhibit "B-1" – General Location Map; and
2. Exhibit "B-2" – Detailed Map; and

Please do not hesitate to contact me should you need anything further.

Very truly yours,



Natalie B. Scott

Cc (w/encl.):

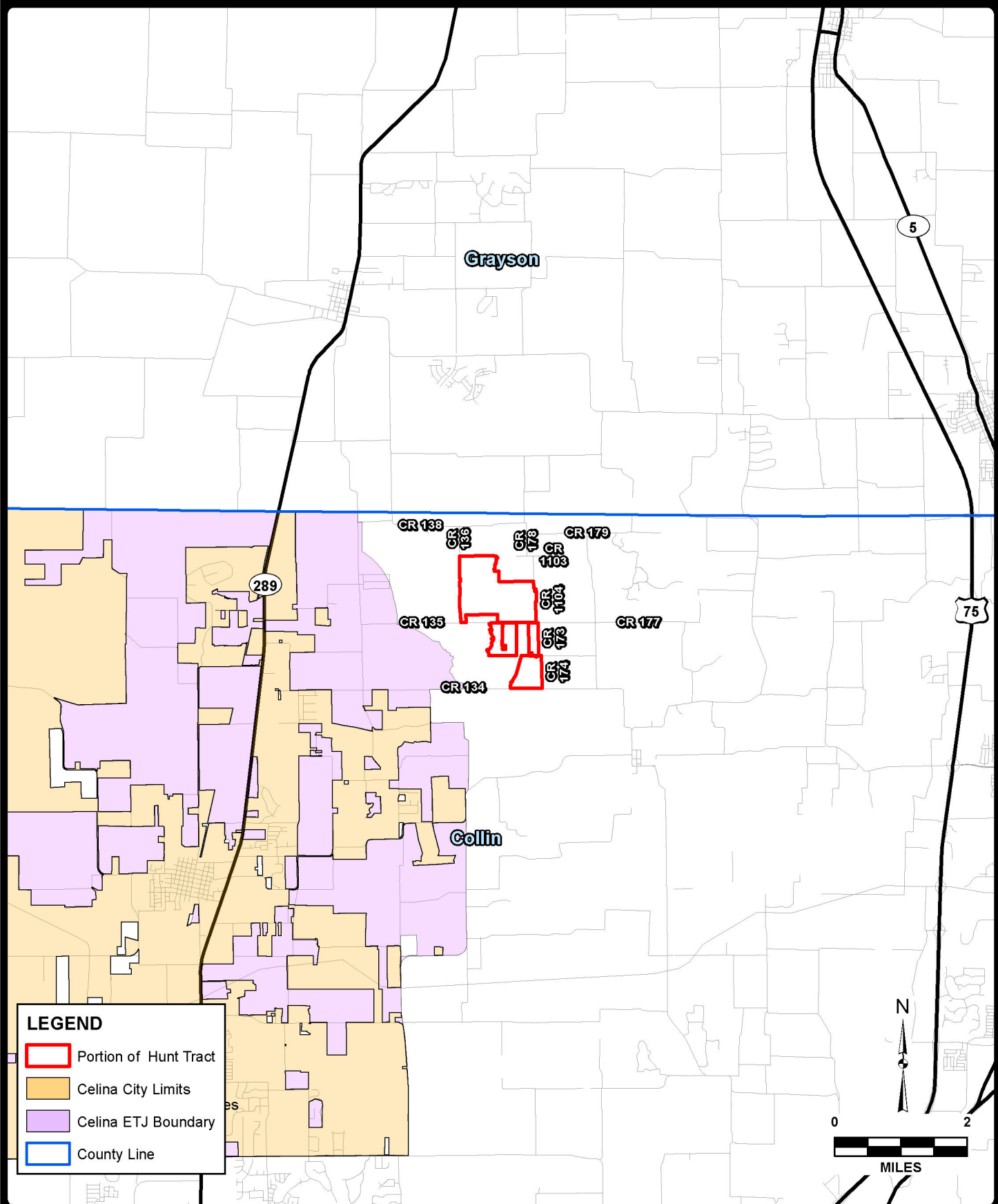
Attorneys for Marilee Special Utility District:

John J. Carlton - Email: john@carltonlawaustin.com

Grayson E. McDaniel - Email: grayson@carltonlawaustin.com

TERRACE 2, 2700 VIA FORTUNA, SUITE 350, AUSTIN, TEXAS 78746
PHONE: (512) 469-7987 FAX: (512) 469-9408
coatsrose.com

Exhibit “B-1”
General Location Map



LEGEND

- Portion of Hunt Tract
- Celina City Limits
- Celina ETJ Boundary
- County Line

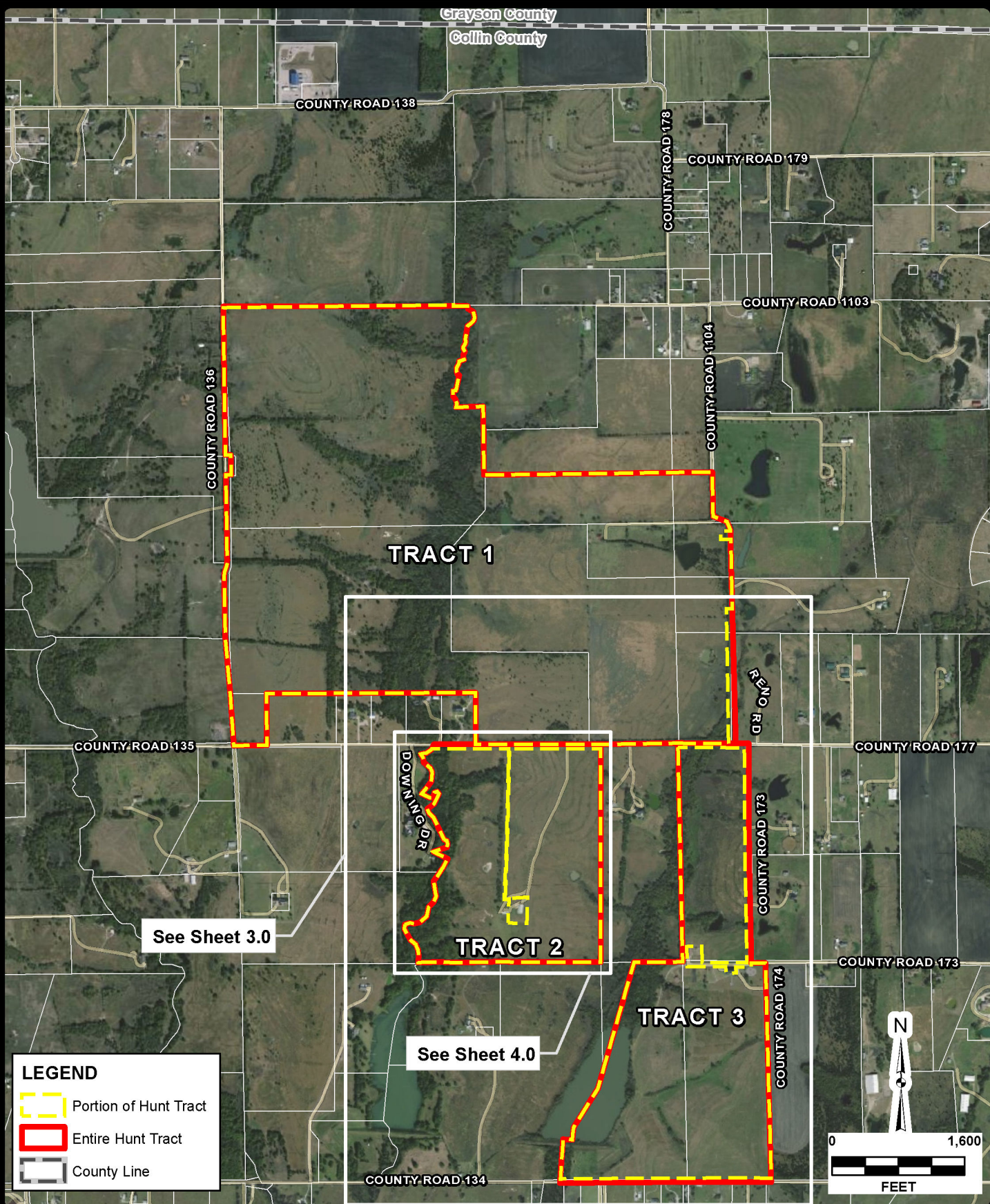
JOB NO.	---		
DATE	Aug 2021		
DESIGNER	DW		
CHECKED	DW	DRAWN	EH
SHEET	1.0		

STREAMLINED EXPEDITED RELEASE (SER)
MARILEE SUD WATER CCN NO. 10150
ENTIRE HUNT TRACT
 VICINITY MAP
 COLLIN COUNTY, TEXAS

PAPE-DAWSON ENGINEERS
 DALLAS | SAN ANTONIO | AUSTIN | HOUSTON | FORT WORTH
 5810 TENNYSON PKWY, STE 425 | PLANO, TX 75024 | 214.420.8494
 TEXAS BOARD OF PROFESSIONAL ENGINEERS FIRM REGISTRATION #470

AERIAL IMAGERY PROVIDED BY GOOGLE © UNLESS OTHERWISE NOTED. Imagery ©2015, ©2016, ©2017, ©2018, ©2019, ©2020, ©2021 Google, Texas Orthomography Program, USDA Farm Service Agency.




Date: Aug 27, 2021 1:34:17 PM User: E.Hester
File: Z:\E.Hester\Projects\SWW\Marilee SUD\Description_210150\MXD\02_Hunt_LocationMap_8.5x11.mxd



See Sheet 3.0

See Sheet 4.0

LEGEND

-  Portion of Hunt Tract
-  Entire Hunt Tract
-  County Line

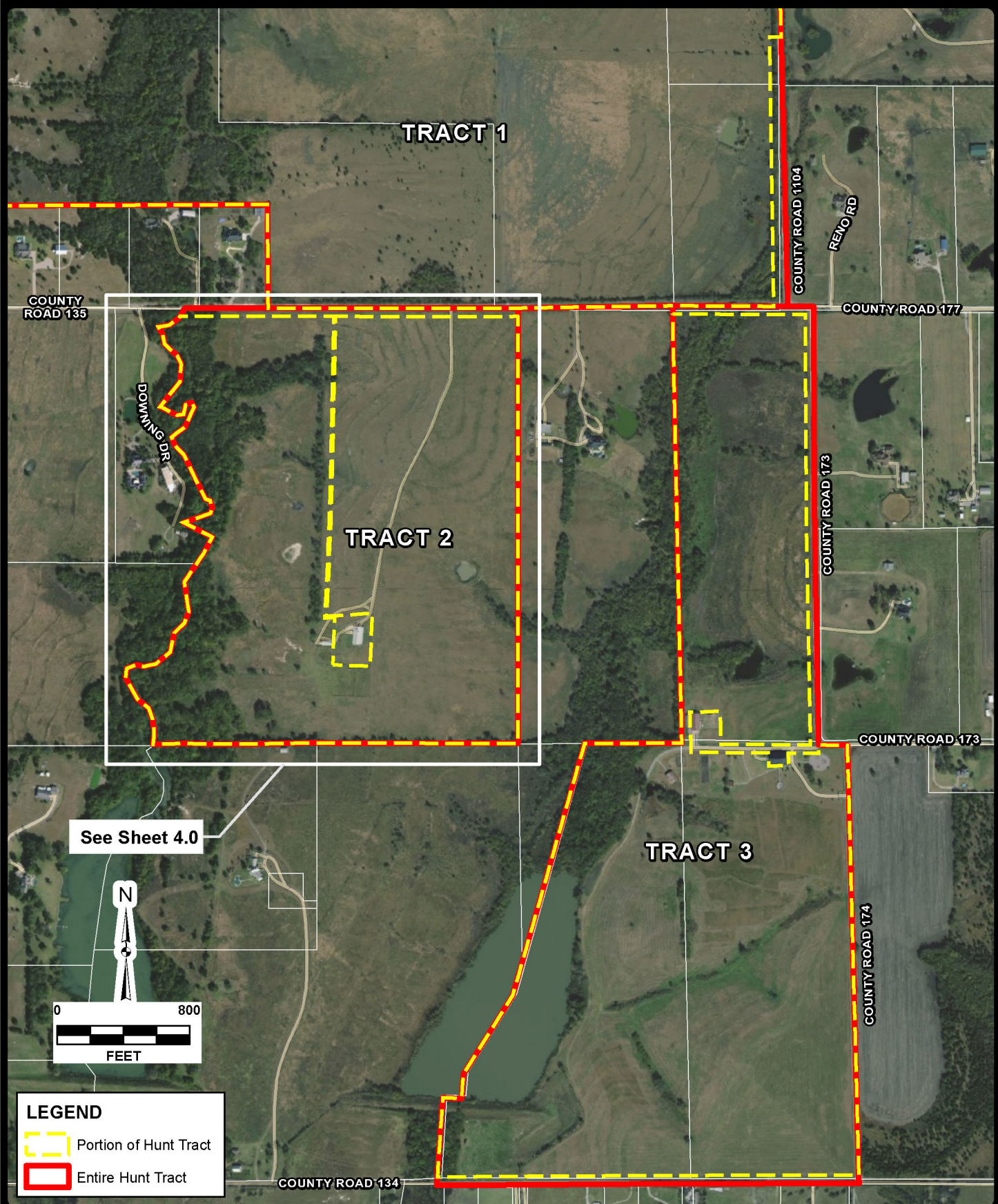
JOB NO.	---		
DATE	Aug 2021		
DESIGNER	DW		
CHECKED	DW	DRAWN	EH
SHEET	2.0		

STREAMLINED EXPEDITED RELEASE (SER)
MARILEE SUD WATER CCN NO. 10150
HUNT TRACT
LOCATION MAP
COLLIN COUNTY, TEXAS

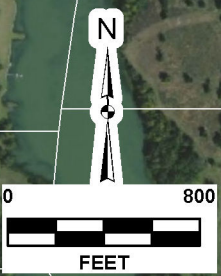
PAPE-DAWSON ENGINEERS

DALLAS | SAN ANTONIO | AUSTIN | HOUSTON | FORT WORTH
 5810 TENNYSON PKWY, STE 425 | PLANO, TX 75024 | 214.420.8494
 TEXAS BOARD OF PROFESSIONAL ENGINEERS FIRM REGISTRATION #470

APRIAL IMAGERY PROVIDED BY GOOGLE © UNLESS OTHERWISE NOTED. Imagery ©2015,CAPCOG, Digital Globe, Texas Orthometry Program, USDA Farm Service Agency.



See Sheet 4.0



LEGEND

-  Portion of Hunt Tract
-  Entire Hunt Tract

JOB NO.	---
DATE	Aug 2021
DESIGNER	DW
CHECKED	DW
DRAWN	EH
SHEET	3.0

STREAMLINED EXPEDITED RELEASE (SER)
MARILEE SUD WATER CCN NO. 10150
HUNT TRACT
LOCATION MAP
COLLIN COUNTY, TEXAS

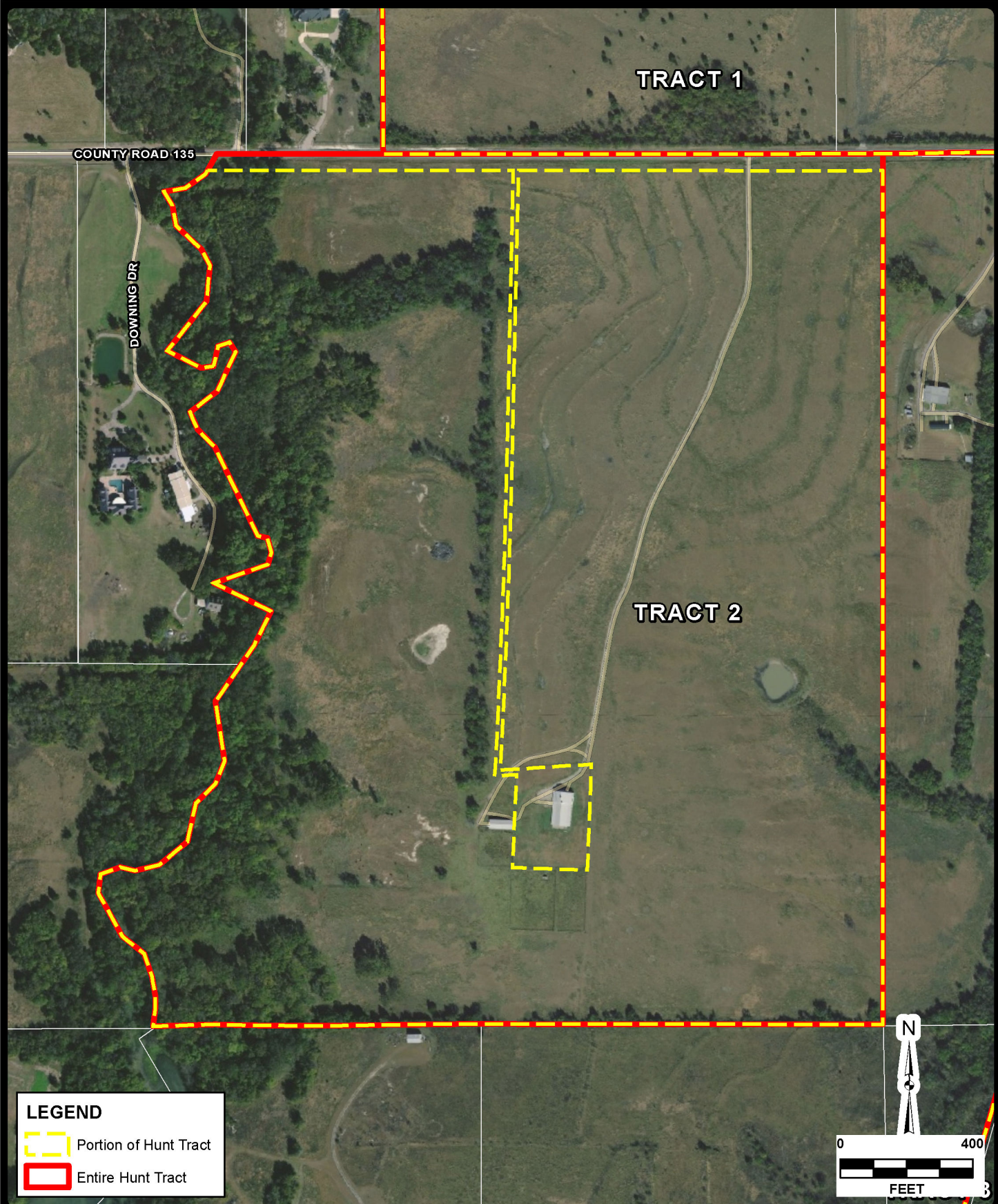
PAPE-DAWSON ENGINEERS

DALLAS | SAN ANTONIO | AUSTIN | HOUSTON | FORT WORTH
 5810 TENNYSON PKWY, STE 425 | PLANO, TX 75024 | 214.420.8494
 TEXAS BOARD OF PROFESSIONAL ENGINEERS FIRM REGISTRATION #470


Date: Aug 27, 2021, 1:33:16 PM User: E.Hester File: Z:\Flaser\Projects\SWW\Marilee SUD\Description_210510\MXD\02_Hunt_LocationMapB_6.5x11.mxd

APRIAL IMAGERY PROVIDED BY GOOGLE © UNLESS OTHERWISE NOTED. Imagery ©2015, APCOG, Digital Globe, Texas Orthometry Program, USDA Farm Service Agency.


Date: Aug 27, 2021 1:55:06 PM User: E.Hester
File: Z:\Ehaster\Projects\Marilee SUD\Drawings\210810\Map\CDL_Hunt_Location\MyC_B 5x11.mxd




LEGEND

-  Portion of Hunt Tract
-  Entire Hunt Tract

N



0 400



FEET

JOB NO.	---
DATE	Aug 2021
DESIGNER	DW
CHECKED	DW DRAWN EH
SHEET	4.0

STREAMLINED EXPEDITED RELEASE (SER)
MARILEE SUD WATER CEN NO. 10150
HUNT TRACT 2
LOCATION MAP
COLLIN COUNTY, TEXAS

PAPE-DAWSON ENGINEERS

DALLAS | SAN ANTONIO | AUSTIN | HOUSTON | FORT WORTH
 5810 TENNYSON PKWY, STE 425 | PLANO, TX 75024 | 214.420.8494
 TEXAS BOARD OF PROFESSIONAL ENGINEERS FIRM REGISTRATION #470

Exhibit “B-2”
Detailed Map

