



## Filing Receipt

**Received - 2021-11-01 01:17:08 PM**

**Control Number - 52299**

**ItemNumber - 981**

# NORTH ALAMO WATER SUPPLY CORPORATION

3/8 MILE S OF SH 107 ON DOOLITTLE ROAD  
420 S DOOLITTLE RD EDINBURG TX 78542-9707

TELEPHONE 956-383-1618  
FAX 956-383-1372

November 1, 2021

Texas Public Utility Commission  
1701 N. Congress Avenue, 7<sup>th</sup> Floor  
PO Box 13326  
Austin, Texas 78711-3326

Ref: North Alamo Water Supply Corporation "Affected Utility"  
Public Utility Commission of Texas Project 52299  
Senate Bill 3, 87<sup>th</sup> Legislature, Regular Session  
Texas Water Code (TWC) § 13.1396

Dear Texas Public Utility Commission,

Please accept this letter as part North Alamo's requirement to provide your office with the following information as required by Senate Bill 3, under the 87<sup>th</sup> Texas Legislature's response to February's unprecedented power and water outages brought on by Winter Storm Uri.

Senate Bill 3 imposes several new requirements on water and sewer utilities, including new reporting and emergency planning requirements. All retail water and sewer utilities in Texas are subject to these requirements, and therefore must submit critical infrastructure information to transmission and distribution service providers, retail electric providers, and the office of emergency management of each county where the utility has water or sewer facilities.

Below is information that must be filed with your office to meet the requirements of Senate Bill 3:

**Name of Public Water and Sewer Utility:**

North Alamo Water Supply Corporation

**Emergency Contact Information:**

1<sup>st</sup> Main Point of Contact

Steve Sanchez, General Manager

P: 956.383.1618

M: 956.802.6898

E: [ssanchez@nawsc.com](mailto:ssanchez@nawsc.com)

2<sup>nd</sup> Main Point of Contact

Robert Rodriguez, Assistant General Manager/Water Systems Manager

P: 956.383.1618

M: 956.533.1193

E: [rrodriguez@nawsc.com](mailto:rrodriguez@nawsc.com)

**Alternative Point of Contact for Water Operations:**

Estevan Flores, Water Treatment Plant Supervisor

P: 956.383.1618

M: 956.651.0336

E: [eflores@nawsc.com](mailto:eflores@nawsc.com)

Gilbert Davila, Water Distribution Supervisor

P: 956.383.1618

M: 956.605.2207

E: [gdavila@nawsc.com](mailto:gdavila@nawsc.com)

**Alternative Point of Contact for Sewer Operations:**

Augustin Gomez, Wastewater Systems Manager

P: 956.383.1618

M: 956.252.5481

E: [agomez@nawsc.com](mailto:agomez@nawsc.com)

Mingo Rios, Wastewater Treatment Plant Supervisor

P: 956.383.1618

M: 956.342.8222

E: [mrrios@nawsc.com](mailto:mrrios@nawsc.com)

DC Cavazos, Wastewater Collection System Supervisor

P: 956.383.1618

M: 956.264.8859

E: [dccavazos@nawsc.com](mailto:dccavazos@nawsc.com)

**Affected Utility's Mailing Address:**

420 South Doolittle Road

Edinburg, Texas 78542

P: 956.383.1618

P: 800.734.0620

P: 800.734.0690

Emergency: 956.464.7575

[www.nawsc.com](http://www.nawsc.com)

**Location and General Description of Surface Water Treatment Plant Facilities:**

North Alamo WSC has a total of 6 surface water treatment plants all located in Hidalgo County, Texas.

**NAWSC Water Treatment Plant No. 1 (Hidalgo County, Texas)**

Is located along Doolittle Road in Edinburg, Texas approximately 1,800 lineal feet south from the intersection of State Highway 107 and Doolittle Road. The facility processes 2.5 million gallons per day of potable water. The facility is comprised of the following structures requiring electrical power; a raw water pump station, chemical feed and bulk storage, rapid mix, clarifiers, filters, transfer well pump station, high service pumps, backwash pump station and operations building. This facility is equipped with a standby generator to continue operations.

**NAWSC Water Treatment Plant No. 2 (Hidalgo County, Texas)**

Is located along FM 2812 north of Edinburg, Texas approximately 5,200 lineal feet east from the intersection of US Highway 281/I-69C and FM 2812. The facility processes 3.5 million gallons per day of potable water. The facility is comprised of the following structures requiring electrical power; a raw water pump station, chemical feed and bulk storage, rapid mix, clarifier, filters, transfer well pump station, high service pumps, backwash pump station and operations building. This facility is equipped with a standby generator to continue operations.

**NAWSC Water Treatment Plant No. 4 (Hidalgo County, Texas)**

Is located along Owassa Road north of Alamo, Texas approximately 950 lineal feet west from the intersection of Cesar Chavez Road and Owassa Road. The facility processes 4.2 million gallons per day of potable water. The facility is comprised of the following structures requiring electrical power; a raw water pump station, chemical feed and bulk storage, rapid mix, clarifier, filters, transfer well pump station, high service pumps, backwash pump station and operations building. This facility is equipped with a standby generator to continue operations.

**NAWSC Water Treatment Plant No. 5 (Hidalgo County, Texas)**

Is located along Victoria Road north of Donna, Texas approximately 900 lineal feet north from the intersection of Mile 11 North Road and Victoria Road. The facility processes 11.0 million gallons per day of potable water. The facility is comprised of the following structures requiring electrical power; a raw water pump station, chemical feed and bulk storage, rapid mix, clarifier, filters, transfer well pump station, high service pumps, backwash pump station and operations building. This facility is currently upgrading its standby generators to continue operations.

**NAWSC Water Treatment Plant No. 6 (Hidalgo County, Texas)**

Is located along Garcia Street in Monte Alto, Texas approximately 1,900 lineal feet west from the intersection of FM 88 and Garcia Street. The facility processes 1.2 million gallons per day of potable water. The facility is comprised of the following structures requiring electrical power; a raw water pump station, chemical feed and bulk storage, rapid mix, clarifier, filters, transfer well pump station, high service pumps, backwash pump station and operations building. This facility is equipped with a standby generator to continue operations.

**NAWSC Water Treatment Plant No. 7 (Hidalgo County, Texas)**

Is located along FM 1925 just north Edcouch, Texas approximately 3,200 lineal feet west from the intersection of FM 1015 and FM 1925. The facility processes 4.0 million gallons per day of potable water. The facility is comprised of the following structures requiring electrical power; a raw water pump station, chemical feed and bulk storage, rapid mix, clarifier, filters, transfer well pump station, high service pumps, backwash pump station and operations building. This facility is equipped with a standby generator to continue operations.

**Location and General Description of Reverse Osmosis Treatment Facilities:**

North Alamo WS has a total of 5 reverse osmosis treatment plant located in Hidalgo, Cameron and Willacy County, Texas

**NAWSC Doolittle Reverse Osmosis Treatment Facility (Hidalgo County, Texas)**

Is located along Doolittle Road in Edinburg, Texas approximately 1,800 lineal feet south from the intersection of State Highway 107 and Doolittle Road. The facility processes 3.0 million gallons per day of

potable water. The facility is comprised of the following structures requiring electrical power; water well, feed pump, reverse osmosis trains, energy recovery turbines, air stripping, and transfer pumps. This facility is currently in the design phase of receiving a standby generator to continue operations.

**NAWSC Owassa Reverse Osmosis Treatment Facility (Hidalgo County, Texas)**

Is located along Owassa Road north of Alamo, Texas approximately 950 lineal feet west from the intersection of Cesar Chavez Road and Owassa Road. The facility processes 1.5 million gallons per day of potable water. The facility is comprised of the following structures requiring electrical power; water well, feed pump, reverse osmosis trains, energy recovery turbines, air stripping, and transfer pumps. This facility is equipped with a standby generator to continue operations.

**NAWSC Donna Reverse Osmosis Treatment Facility (Hidalgo County, Texas)**

Is located along Victoria Road north of Donna, Texas approximately 900 lineal feet north from the intersection of Mile 11 North Road and Victoria Road. The facility processes 2.0 million gallons per day of potable water. The facility is comprised of the following structures requiring electrical power; water well, feed pump, reverse osmosis trains, energy recovery turbines, air stripping, and transfer pumps. This facility is equipped with a standby generator to continue operations.

**NAWSC North Cameron County Reverse Osmosis Treatment Facility (Cameron County, Texas)**

Is located along State Highway 107 west of Combes, Texas approximately 1,600 lineal feet east from the intersection of FM 800 and State Highway 107. The facility processes 0.67 thousand gallons per day of potable water. The facility is comprised of the following structures requiring electrical power; water well, feed pump, reverse osmosis trains, energy recovery turbines, air stripping, and transfer pumps. This facility is equipped with a standby generator to continue operations.

**NAWSC La Sara Reverse Osmosis Treatment Facility (Willacy County, Texas)**

Is located along State Highway 186 east of La Sara, Texas approximately 3,200 lineal feet east from the intersection of FM 1015 and State Highway 186. The facility processes 1.0 million gallons per day of potable water. The facility is comprised of the following structures requiring electrical power; water well, feed pump, reverse osmosis trains, energy recovery turbines, air stripping, and transfer pumps. This facility is equipped with a standby generator to continue operations.

**Location and General Description of Booster Station Facilities:**

North Alamo WS has a total of 6 booster stations located in Hidalgo, Cameron and Willacy County, Texas

**NAWSC FM 493 Booster Station Facility (Hidalgo County, Texas)**

Is located along FM 493 midway between La Blanca and Hargill, Texas approximately 1,500 lineal feet north from the intersection of FM 2812 and FM 493. This facility is utilized to pump potable water to the north and east of North Alamo's service area. The facility is comprised of a ground storage tank and high service pumps. This facility is currently in the design phase of receiving a standby generator to continue operations.

**NAWSC FM 1425 Booster Station Facility (Willacy County, Texas)**

Is located along FM 1425 west of Sebastian, Texas approximately 3,900 lineal feet north from the intersection of FM 2629 and FM 1425. This facility is utilized to pump potable water to the north and east of North Alamo's service area. The facility is comprised of a ground storage tank and high service pumps. This facility is equipped with a standby generator to continue operations.

**NAWSC La Sara Booster Station Facility (Willacy County, Texas)**

Is located along State Highway 186 east of La Sara, Texas approximately 2,600 lineal feet east from the intersection of FM 1015 and State Highway 186. This facility is utilized to pump potable water to the east of North Alamo’s service area. The facility is comprised of a ground storage tank and high service pumps. This facility is equipped with a standby generator to continue operations.

**NAWSC Stillman No. 2 Booster Station Facility (Willacy County, Texas)**

Is located along FM 498 east of Lyford, Texas approximately 670 lineal feet west from the intersection of FM 2099 and FM 498. This facility is utilized to pump potable water to the north of North Alamo’s service area. The facility is comprised of a ground storage tank and high service pumps. This facility will not require a standby generator due to the FM 1425 Booster Station and FM 1018 water tower providing water the service area.

**NAWSC Stillman No. 4 Booster Station Facility (Willacy County, Texas)**

Is located along Hickory Road east of Raymondville, Texas approximately 150 lineal feet west from the intersection of FM 2099 and Hickory Road. This facility is utilized to pump potable water to the north of North Alamo’s service area. The facility is comprised of a ground storage tank and high service pumps. This facility will not require a standby generator due to the FM 1425 Booster Station and FM 1018 water tower providing water the service area.

**NAWSC San Perlita Booster Station Facility (Willacy County, Texas)**

Is located along Polamar Road in San Perlita, Texas approximately 2,400 lineal feet west from the intersection of FM 2209 and Polamar Road. This facility is utilized to pump potable water to the north and east of North Alamo’s service area. The facility is comprised of a ground storage tank and high service pumps. This facility is equipped with a standby generator to continue operations.

**Location and General Description of Activated Sludge Wastewater Treatment Plant Facilities:**

North Alamo WSC has a total of 2 mechanical wastewater treatment plants all located in Hidalgo County, Texas.

**NAWSC North Donna Wastewater Treatment Plant (Hidalgo County, Texas)**

Is located along Minnesota Road north of Donna, Texas at the intersection of Minnesota Road and Goolie Road. The facility processes 500K gallons per day of influent. The facility is comprised of the following structures requiring electrical power; a plant lift station, headworks, carrousel, clarifiers, ras/was pump station, chemical feed building, solids building and operations building. This facility is equipped with a standby generator to continue operations.

**NAWSC North Weslaco Wastewater Treatment Plant (Hidalgo County, Texas)**

Is located along Mile 12 ½ North Road north of Weslaco, Texas approximately 2,300 lineal feet west from the intersection of FM 1015 and Mile 12 ½ North Road. The facility processes 700K gallons per day of influent. The facility is comprised of the following structures requiring electrical power; a plant lift station, headworks, carrousel, clarifiers, ras/was pump station, chemical feed building, solids building and operations building. This facility is equipped with a standby generator to continue operations.

**Location and General Description of Facultative Lagoon Wastewater Treatment Facilities:**

North Alamo WSC has a total of 4 facultative lagoon wastewater treatment facilities located in Hidalgo and Willacy County, Texas.

**NAWSC San Carlos Facultative Lagoon Wastewater Treatment Plant (Hidalgo County, Texas)**

Is located along 83<sup>rd</sup> Street north of San Carlos, Texas approximately 400 lineal feet south from the intersection of Mile 17 ½ North Road and 83<sup>rd</sup> Street. The facility processes 200,000 gallons per day of municipal wastewater. The facility is comprised of a series of ponds that stabilize organic material through natural processes involving sunlight, water, nutrients, algae, atmospheric oxygen and bacterial action. The facility requires no pumps and motors. All flows are by gravity. Discharge of effluent is into a drainage ditch and/or flood irrigation is an option. Sludge is land apply. This facility does not require a standby generator.

**NAWSC Hargill Facultative Lagoon Wastewater Treatment Plant (Hidalgo County, Texas)**

Is located along 12<sup>th</sup> Street south of Hargill, Texas approximately 3,400 lineal feet west from the intersection of FM 493 and 12<sup>th</sup> Street. The facility processes 100,000 gallons per day of municipal wastewater. The facility is comprised of a series of ponds that stabilize organic material through natural processes involving sunlight, water, nutrients, algae, atmospheric oxygen and bacterial action. The facility requires no pumps and motors. All flows are by gravity. Discharge of effluent is into a drainage ditch and/or flood irrigation is an option. Sludge is land apply. This facility does not require a standby generator.

**NAWSC Monte Alto Facultative Lagoon Wastewater Treatment Plant (Hidalgo County, Texas)**

Is located along Mile 5 ½ West Road west of Monte Alto, Texas at the intersection of Valdez Street and Mile 5 ½ West Road. The facility processes 100,000 gallons per day of municipal wastewater. The facility is comprised of a series of ponds that stabilize organic material through natural processes involving sunlight, water, nutrients, algae, atmospheric oxygen and bacterial action. The facility requires no pumps and motors. All flows are by gravity. Discharge of effluent is into a drainage ditch and/or flood irrigation is an option. Sludge is land apply. This facility does not require a standby generator.

**NAWSC La Sara Facultative Lagoon Wastewater Treatment Plant (Willacy County, Texas)**

Is located along County Road 65 north of La Sara, Texas approximately 2,100 lineal feet south from the intersection of State Highway 186 and County Road 65. The facility processes 100,000 gallons per day of municipal wastewater. The facility is comprised of a series of ponds that stabilize organic material through natural processes involving sunlight, water, nutrients, algae, atmospheric oxygen and bacterial action. The facility requires no pumps and motors. All flows are by gravity. Discharge of effluent is into a drainage ditch and/or flood irrigation is an option. Sludge is land apply. This facility does not require a standby generator.

**Location and General Description of Lift Station Facilities:**

North Alamo WSC has a series of lift stations throughout its sewer collection system located in both Hidalgo and Willacy County. These lift stations are designed with electrical switch gear that will allow for a trailer mounted diesel generator to be connected and continue providing service. The said generators are stored at North Alamo's warehouse in Edinburg, Texas and are on standby. In addition to the generators, North Alamo has a series of trailer mounted engine driven pumps to assist with by-pass pumping should a generator be in operable or if the pump fails to provide service.

The above information provides emergency contact information, a mailing address to the Corporation's main office, a description and location to each of North Alamo's affected facility. In addition, the above information has been provided to the Corporation's electrical provider, office of emergency management of each county where we have facilities with critical load status, the Texas Division of Emergency Management. Rest assure, North Alamo Water Supply Corporation will work diligently with other affected

utilities to continue providing water and wastewater services to members of its service area during times of natural disasters and/or power outages.

Should you need additional information please do not hesitate to contact me or my assistant general manager listed on this letter.

Respectfully,

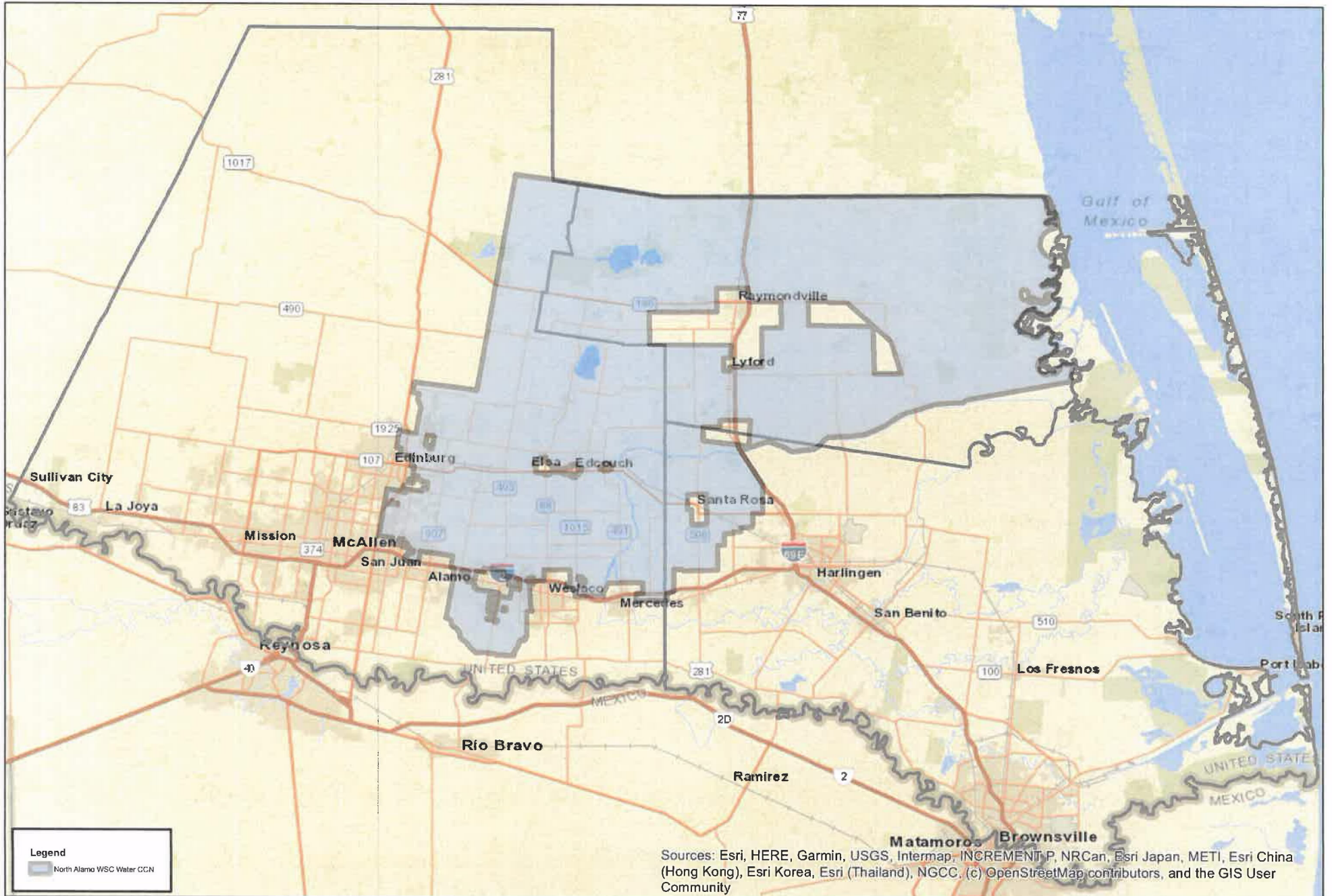


Steve Sanchez, General Manager  
North Alamo Water Supply Corporation

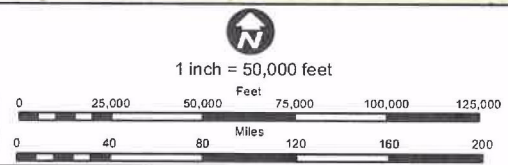
CC: Steve Krenek, Board President-North Alamo WSC  
Robert Rodriguez, Assistant General Manager  
Allan F. Booe, P.E., Melden & Hunt, Inc.

Enclosures: North Alamo WSC Water and Wastewater CCN Maps





Sources: Esri, HERE, Garmin, USGS, Intermap, INCREMENT P, NRCan, Esri Japan, METI, Esri China (Hong Kong), Esri Korea, Esri (Thailand), NGCC, (c) OpenStreetMap contributors, and the GIS User Community



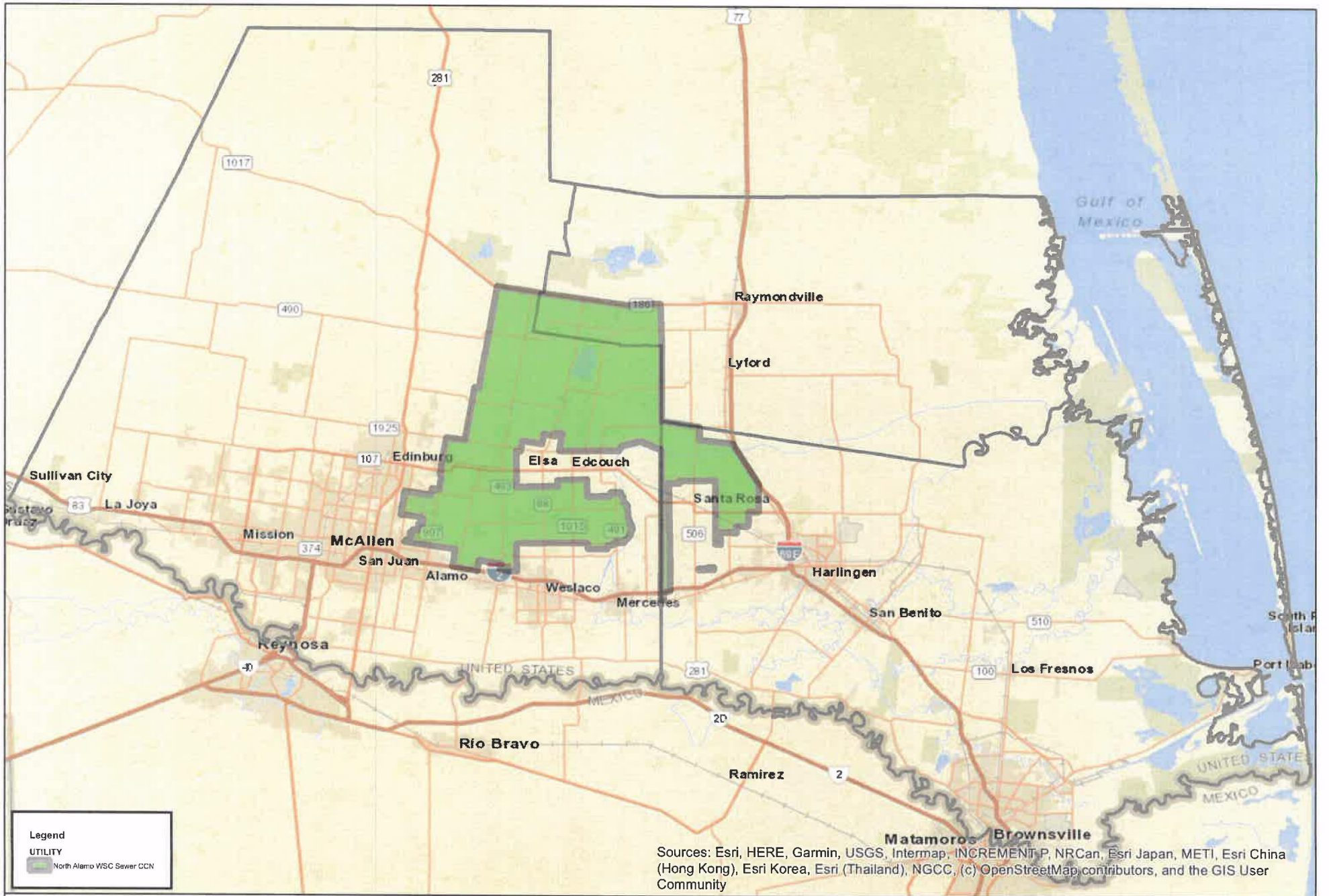
## North Alamo Water Supply Corporation Water CCN Map

**M** **MELDEN & HUNT INC.**  
CONSULTANTS • ENGINEERS • SURVEYORS

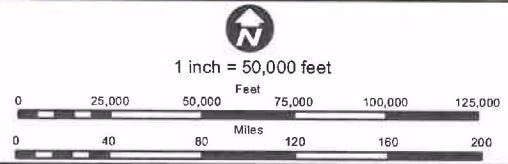
115 W MCINTYRE  
EDINBURG, TX 78541  
PH: (856) 261-0881  
FAX: (856) 381-1836  
ESTABLISHED 1947  
www.meldenandhunt.com

DATE: 04-16-2020  
JOB NO.: 01039.00  
DRAWN BY: A. MENA

© COPYRIGHT 2020 MELDEN & HUNT, INC. ALL RIGHTS RESERVED



Sources: Esri, HERE, Garmin, USGS, Intermap, INCREMENT P, NRCan, Esri Japan, METI, Esri China (Hong Kong), Esri Korea, Esri (Thailand), NGCC, (c) OpenStreetMap contributors, and the GIS User Community



## North Alamo Water Supply Corporation Sewer CCN Map

**M** MELDEN & HUNT INC.  
CONSULTANTS - ENGINEERS - SURVEYORS

115 W. MCINTYRE  
EDINBURG, TX 78541  
PH: (956) 381-0081  
FAX: (956) 381-1839  
ESTABLISHED 1947  
www.meldenandhunt.com

DATE: 04-16-2020  
JOB NO.: 81039.00  
DRAWN BY: A. MENA

© COPYRIGHT 2020 MELDEN & HUNT, INC. ALL RIGHTS RESERVED