



Filing Receipt

Received - 2021-11-01 09:59:40 AM
Control Number - 52299
ItemNumber - 892



Era WSC
PO BOX 21
Era, TX 76238

October 29, 2021

RE: Critical Load
Emergency Management Plan

To Whom it May Concern:

Era Water Supply Corporation PWS ID: 0490014 would like to classify our facilities (Water Well Sites) as a critical commercial facility as part of Texas Water Code Section 13.1396. Currently our facility do not have back up generators in the event of an outage

Locations:
(*Maps Attached)

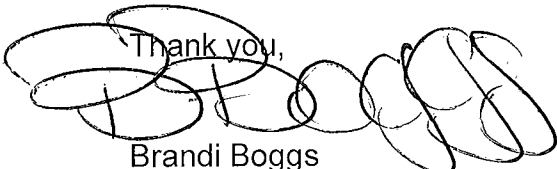
Well #1: Near 115 Wine St, Era TX 76238
Well #2: East of FM 51 & South of FM 922

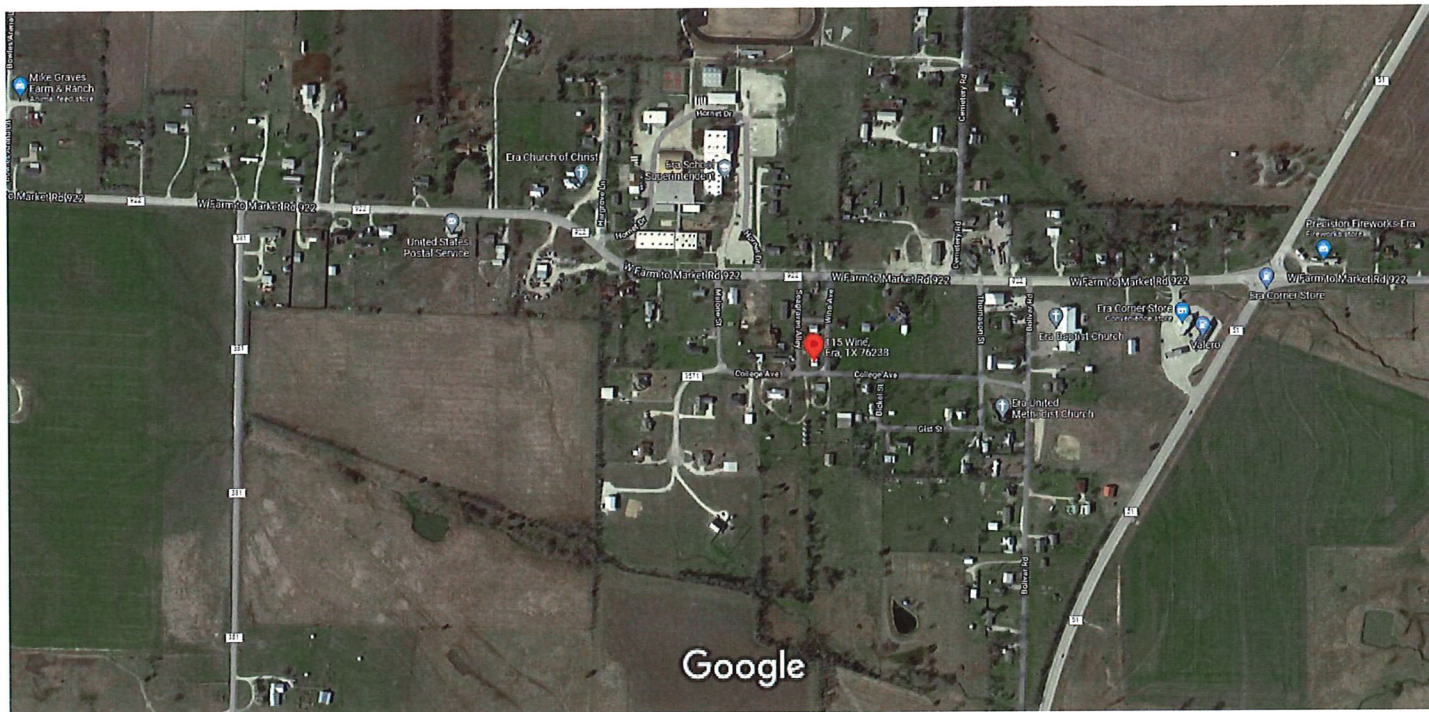
Mailing Address:

Era Water Supply
PO Box 21
Era, TX 76238

Emergency Contacts are as follows:

Todd Reiter: 940-736-1162
Keith Bentley 940-736-5175
Ronnie Pyron 940-391-9877

Thank you,

Brandi Boggs
System Assistant



Imagery ©2021 Maxar Technologies, USDA Farm Service Agency, Map data ©2021 200 ft



115 Wine



Directions



Save



Nearby



Send to your
phone



Share



115 Wine, Era, TX 76238

FPV5+QW Era, Texas

Photos

33°29'42.2"N 97°16'55.3"W

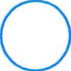







Imagery ©2021 Maxar Technologies, USDA Farm Service Agency, Map data ©2021 200 ft



33°29'42.2"N 97°16'55.3"W

33.495053, -97.282022

- 
Directions
- 
Save
- 
Nearby
- 
Send to your
phone
- 
Share

 Era Independent School District, TX

FPW9+25H Era, Texas