



## Filing Receipt

**Received - 2021-10-29 06:26:32 PM**

**Control Number - 52299**

**ItemNumber - 875**



October 29, 2021

To Whom It May Concern:

City of Hutto is filling the following information with the Public Utility Commission of Texas (PUCT) in Project 52299:

1. City of Hutto Contact Information, see Table 1 below:

Table 1: City of Hutto Contact Information

City of Hutto Contact Information					
Staff Name	Title	Department	Email	Primary Phone #	Secondary Phone #
Matt Wojnowski	Assistant City Manager	City Manager's Office	<a href="mailto:matt.wojnowski@HuttoTX.gov">matt.wojnowski@HuttoTX.gov</a>	(512) 759-4030	
Stacy Schmitt	Public Information Officer (PIO)	Communications	<a href="mailto:stacy.schmitt@HuttoTX.gov">stacy.schmitt@HuttoTX.gov</a>	(512) 759-4929	
Matt Edwards	Utility Superintendent	City of Hutto Public Works	<a href="mailto:matt.edwards@HuttoTX.gov">matt.edwards@HuttoTX.gov</a>	512-845-5203 (Direct)	(512) 759-4020 (Office)
-	-	City of Hutto Public Works	-	(512) 759-4023 (Office)	(512) 759-4016 (After Hour)
-	-	Utility Billing	<a href="mailto:utility.billing@HuttoTX.gov">utility.billing@HuttoTX.gov</a>	(512) 759-4055	

2. City of Hutto Existing Water System Map, see Exhibit 1
3. City of Hutto Water Tower(s) Address, see Exhibit 2
4. City of Hutto Existing Water System Schematic, see Exhibit 3
5. City of Hutto Well Locations and System Layout, see Exhibit 4
6. City of Hutto Existing Wastewater System Map, see Exhibit 5
7. City of Hutto Lift Station(s) Address, see Exhibit 6

Should you have any questions or need any additional information, please contact City of Hutto engineering department at 512-759-4023.

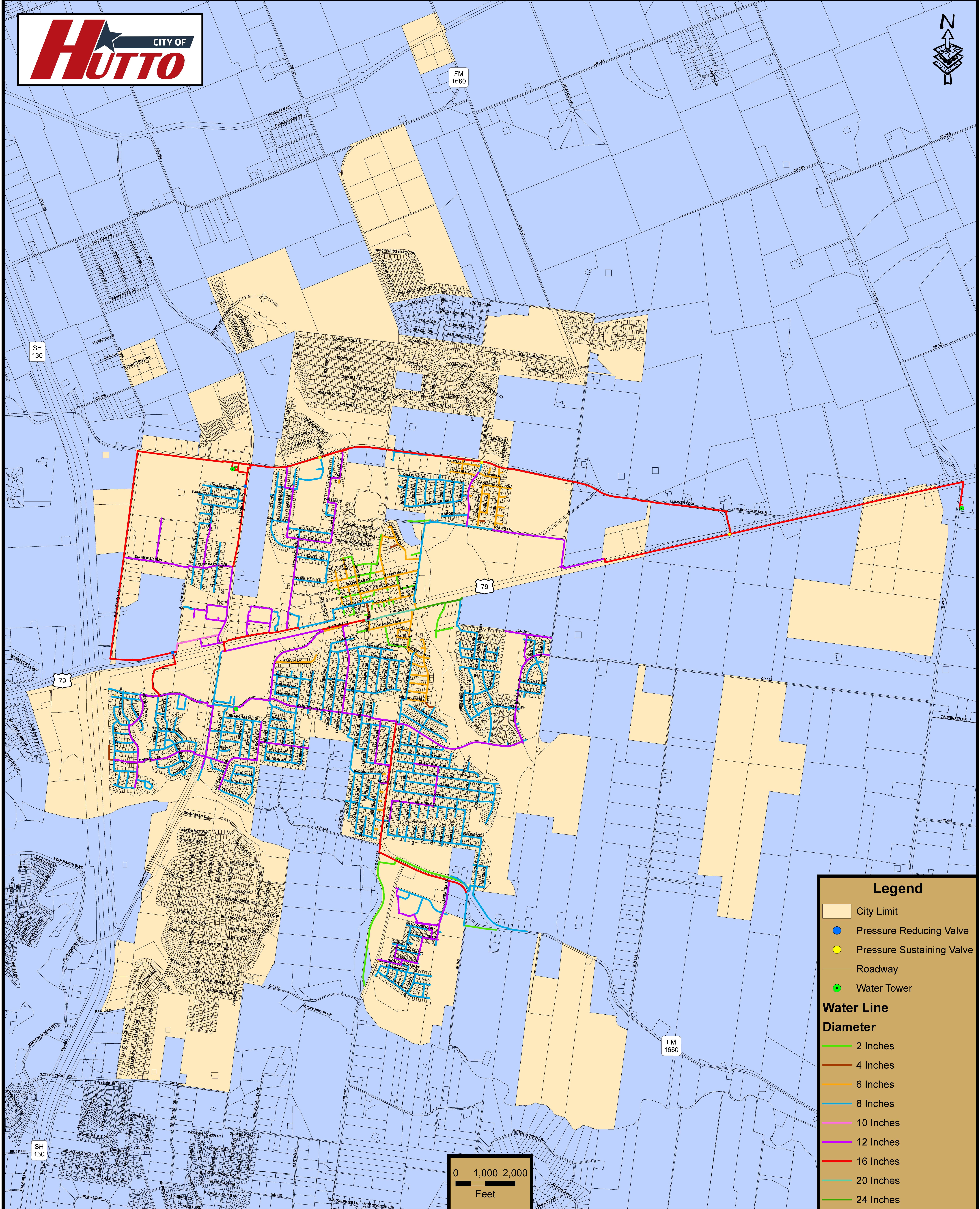
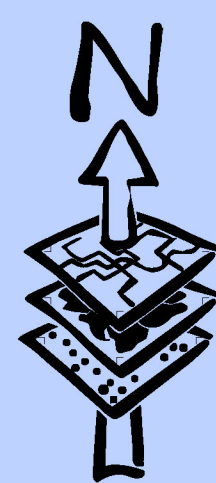
Sincerely,

City of Hutto Engineering Department

# **Exhibit 1**

## **City of Hutto Existing Water System Map**

# City of Hutto Water System Map

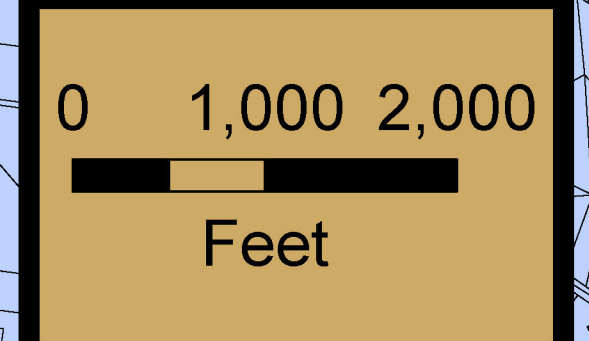


**Legend**

- City Limit
- Pressure Reducing Valve
- Pressure Sustaining Valve
- Roadway
- Water Tower

**Water Line Diameter**

- 2 Inches
- 4 Inches
- 6 Inches
- 8 Inches
- 10 Inches
- 12 Inches
- 16 Inches
- 20 Inches
- 24 Inches



## **Exhibit 2**

### **City of Hutto Water Tower(s) Address**

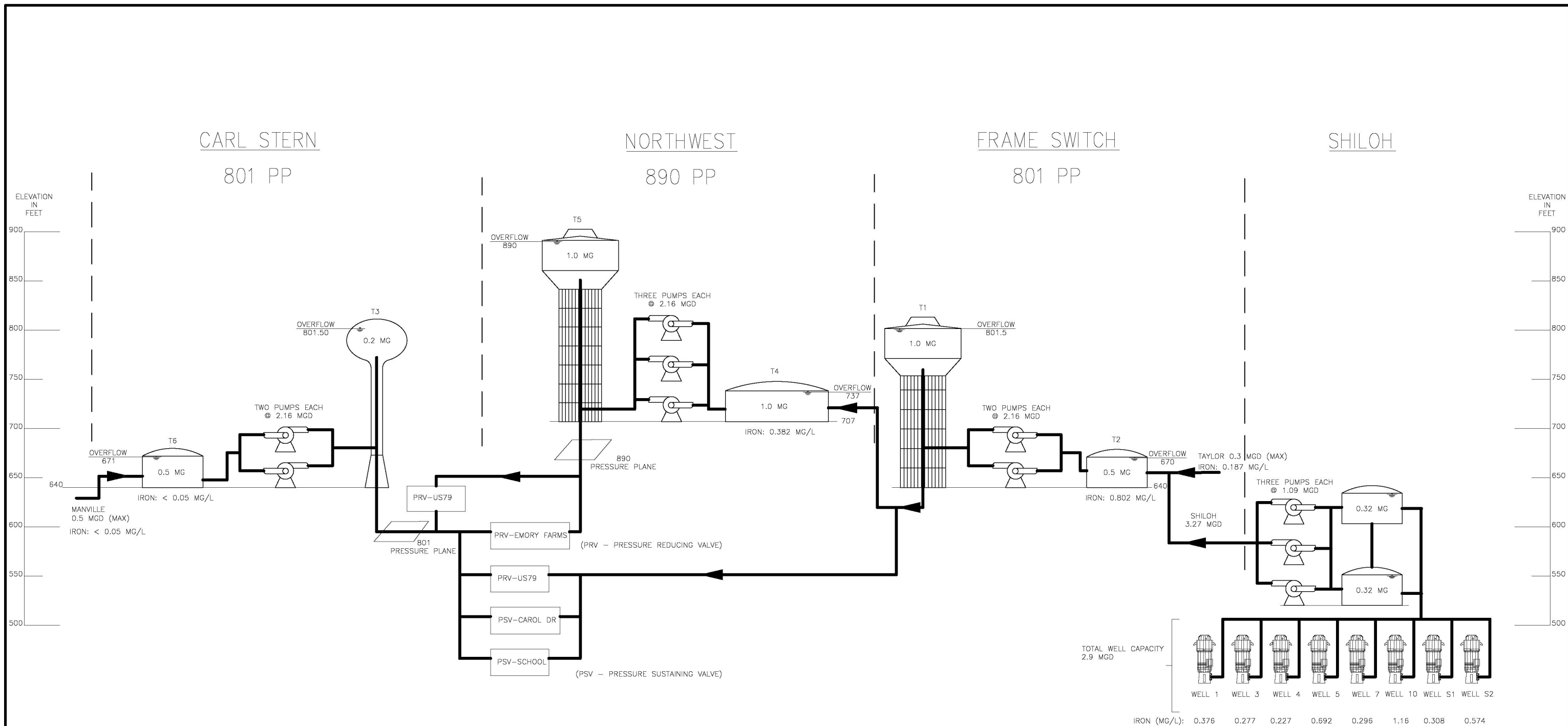
## Exhibit 2

<b>City of Hutto Water Tower Locations</b>	
<b>Water Tower Name</b>	<b>Water Tower Address</b>
Carl Stern	1105 Carl Stern, Hutto, TX 78634
Frameswitch	115 Fm 3349, Hutto, TX 78634
Old Water Tower (Off Line)	205 E. Pecan St, Hutto, TX 78634
Northwest Water Tower	2600 Limmer Loop, Hutto, TX 78634
Shiloh	2208 Cr 484, Thrall, Texas 76578

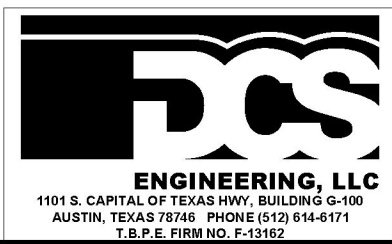
## **Exhibit 3**

# **City of Hutto Existing Water System Schematic**

FILENAME: Z:\Projects\20101286 - COH Water Master Plan\200 - Planning\_Study\2.1 - Drawings\Figures\2021.10.26\_Figure 2.2\_Existing Water System Schematic.dwg, LAST SAVED ON: Oct 26 2021 8:40am, PLOTTED BY: POAJUNDO, ON: Oct 26 2021 9:27am, CFG:



NOTE: IRON LEVELS ARE BASED ON LAB RESULTS DATED NOVEMBER 10, 2014.



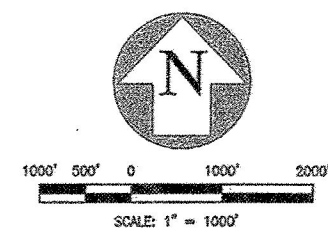
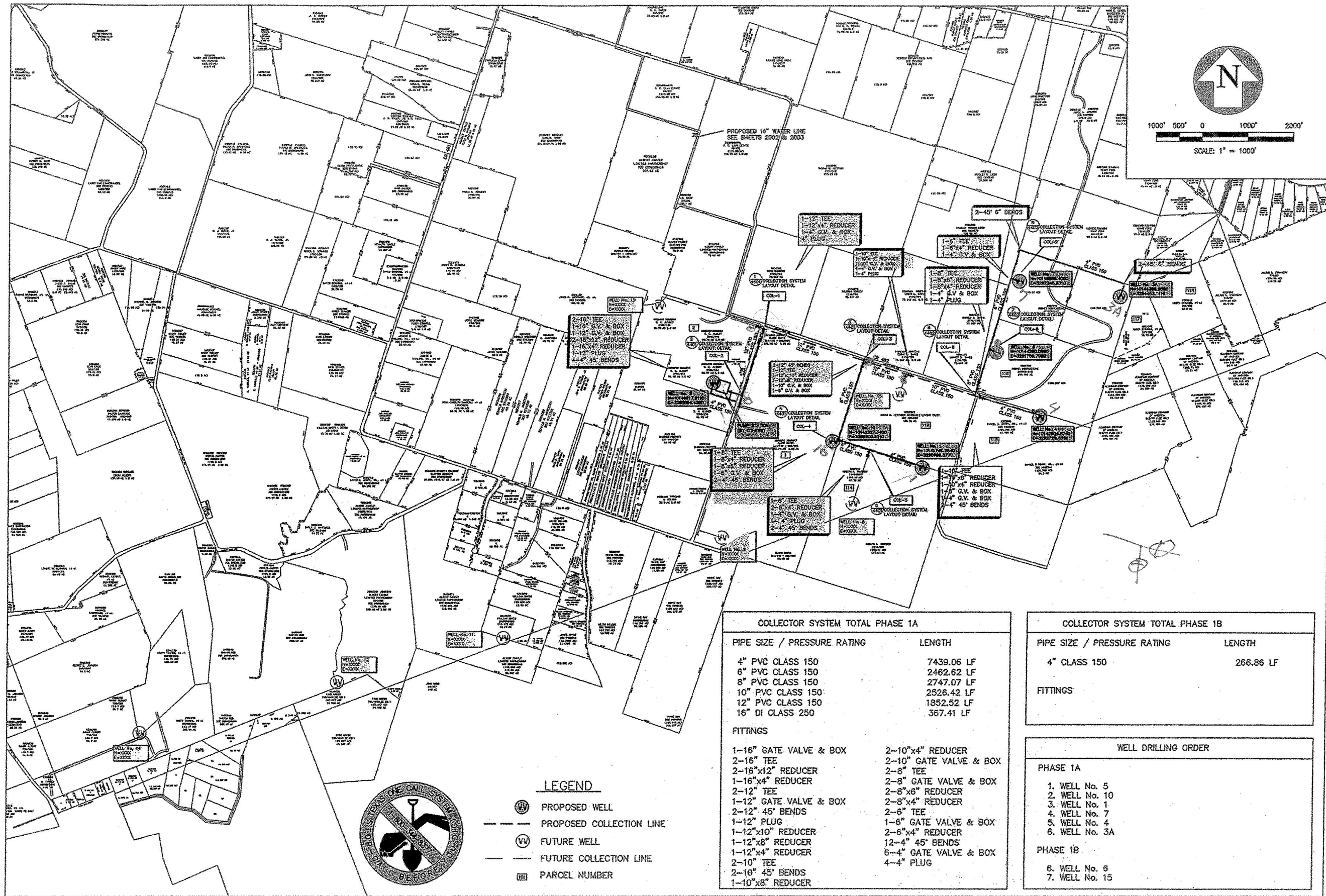
**CITY OF HUTTO  
WATER MASTER PLAN REPORT  
EXISTING WATER SYSTEM SCHEMATIC**

DATE:	APRIL 2016
SCALE:	N.T.S.
FIGURE:	<b>2.2</b> 7 of 13



## **Exhibit 4**

# **City of Hutto Well Locations and System Layout**



**LEGEND**

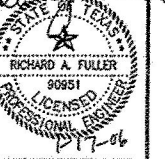
- PROPOSED WELL
- PROPOSED COLLECTION LINE
- FUTURE WELL
- FUTURE COLLECTION LINE
- PARCEL NUMBER

COLLECTOR SYSTEM TOTAL PHASE 1A	
PIPE SIZE / PRESSURE RATING	LENGTH
4" PVC CLASS 150	7439.06 LF
6" PVC CLASS 150	2462.62 LF
8" PVC CLASS 150	2747.07 LF
10" PVC CLASS 150	2526.42 LF
12" PVC CLASS 150	1852.52 LF
16" DI CLASS 250	367.41 LF
FITTINGS	
1-16" GATE VALVE & BOX	2-10"x4" REDUCER
2-16" TEE	2-10" GATE VALVE & BOX
2-16"x12" REDUCER	2-8" TEE
1-16"x4" REDUCER	2-8" GATE VALVE & BOX
2-12" TEE	2-8"x6" REDUCER
1-12" GATE VALVE & BOX	2-8"x4" REDUCER
2-12" 45° BENDS	2-6" TEE
1-12" PLUG	1-6" GATE VALVE & BOX
1-12"x10" REDUCER	2-6"x4" REDUCER
1-12"x8" REDUCER	12-4" 45° BENDS
1-12"x4" REDUCER	6-4" GATE VALVE & BOX
2-10" TEE	4-4" PLUG
2-10" 45° BENDS	
1-10"x8" REDUCER	

COLLECTOR SYSTEM TOTAL PHASE 1B	
PIPE SIZE / PRESSURE RATING	LENGTH
4" CLASS 150	266.86 LF
FITTINGS	

WELL DRILLING ORDER	
PHASE 1A	
1. WELL No. 5	
2. WELL No. 10	
3. WELL No. 1	
4. WELL No. 7	
5. WELL No. 4	
6. WELL No. 3A	
PHASE 1B	
6. WELL No. 6	
7. WELL No. 15	

NO.	DATE	DESCRIPTION	BY	PROJECT

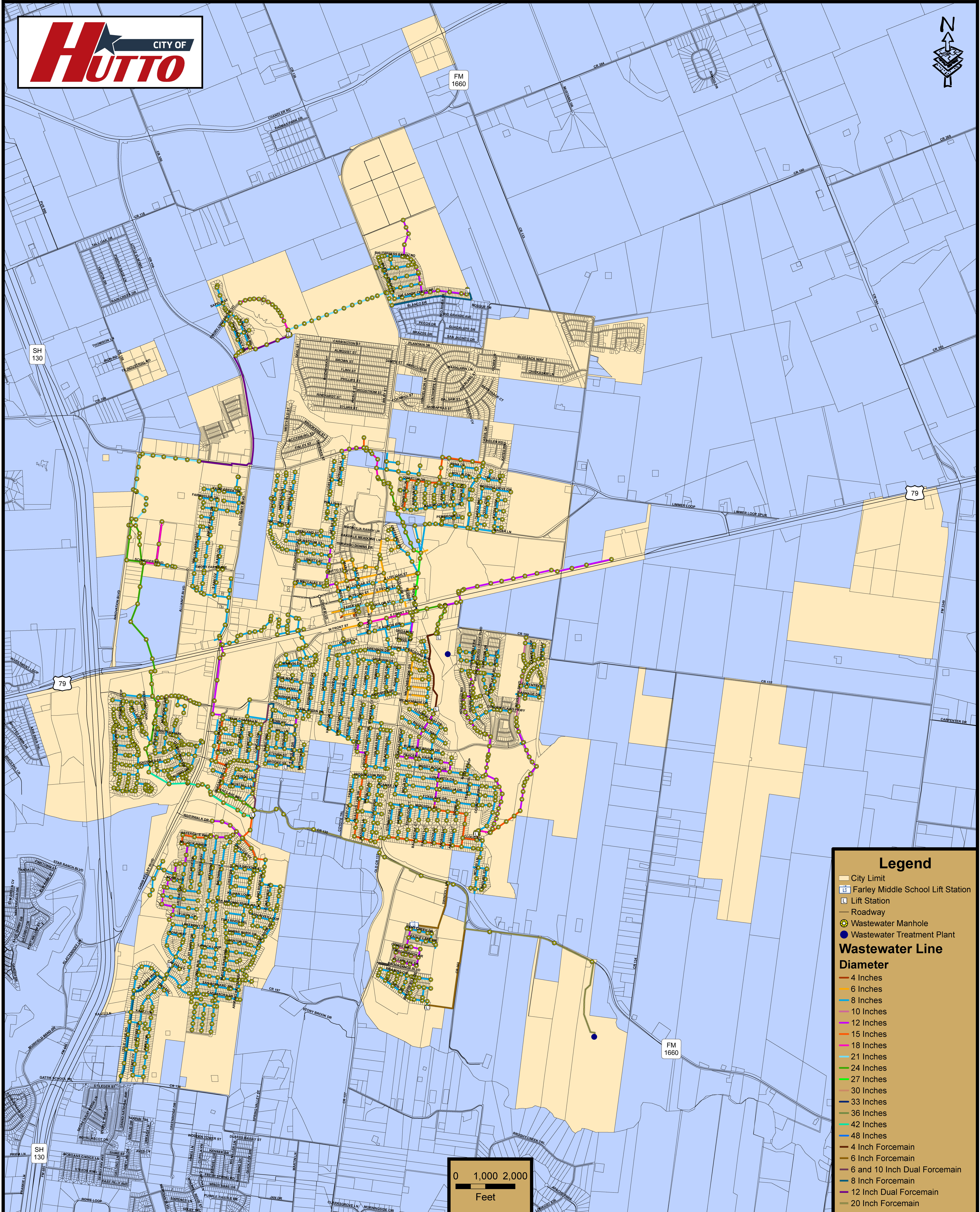
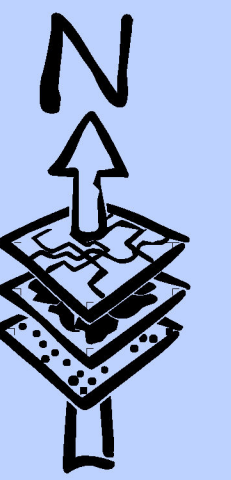


PEI PROJECT NO. 001100100
DESIGN: RF/MC
DRAWN: MC
CHECKED: RF
SHEET 2101

## **Exhibit 5**

# **City of Hutto Existing Wastewater System Map**

# City of Hutto Wastewater System Map



**Legend**

- City Limit
- Farley Middle School Lift Station
- Lift Station
- Roadway
- Wastewater Manhole
- Wastewater Treatment Plant

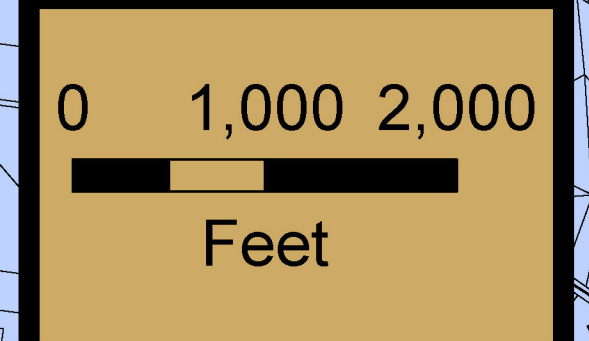
**Wastewater Line**

**Diameter**

- 4 Inches
- 6 Inches
- 8 Inches
- 10 Inches
- 12 Inches
- 15 Inches
- 18 Inches
- 21 Inches
- 24 Inches
- 27 Inches
- 30 Inches
- 33 Inches
- 36 Inches
- 42 Inches
- 48 Inches

**Forcemain**

- 4 Inch Forcemain
- 6 and 10 Inch Dual Forcemain
- 8 Inch Forcemain
- 12 Inch Dual Forcemain
- 20 Inch Forcemain



## **Exhibit 6**

### **City of Hutto Lift Station(s) Address**

## Exhibit 6

<b>City of Hutto Lift Station Locations</b>	
<b>Lift Station Name</b>	<b>Lift Station Address</b>
Glenwood	1015 Cloud Rd., Hutto, TX 78634
Country Estates	126 Brooke St., Hutto, TX 78634
Creekside	124 A Meadowside Dr., Hutto, TX 78634
Enclaves	1131 Enclaves Way, Hutto, TX 78634
Farley	225 Swindoll Lane, Hutto, TX 78634
Brooklands	606 Pulitzer Dr. Ste A, Hutto, TX 78634
Hutto Highlands	1691 CR132, Hutto, TX 78634
Mustang	327-A Big Sandy Creek Dr., Hutto, TX 78634
RSI	701 A Emory Crossing Blvd., Hutto, TX 78634