

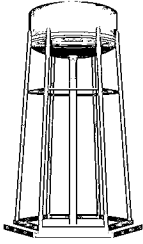


## Filing Receipt

**Received - 2021-10-29 04:56:51 PM**

**Control Number - 52299**

**ItemNumber - 839**



# New Ulm Water Supply Corporation

P. O. Box 73

New Ulm, Texas 78950

Telephone: 979-992-3699

Steven McBride, President  
Susan Stone, Vice President

Doug Bergez, Treasurer  
Esther Hartman, Secretary  
Ron Long, Director

**“This corporation is an equal opportunity provider and employer”**

In accordance with Senate Bill 3, 87th Legislature, Regular Session; Texas Water Code (TWC) §13.1396; PUCT Project 52299; please note the following information:

UTILITY NAME: NEW ULM WATER SUPPLY CORPOORATION  
PWS ID #: 0080014  
COUNTY: AUSTIN COUNTY  
CCN #: 12417

**EMERGENCY CONTACT INFORMATION:**

MANAGER: ANASTASIA GREGOIRE      PHONE #: 979-992-3699, 512-699-2699  
OPERATOR: JONATHAN FRNKA      PHONE #: 979-203-0647

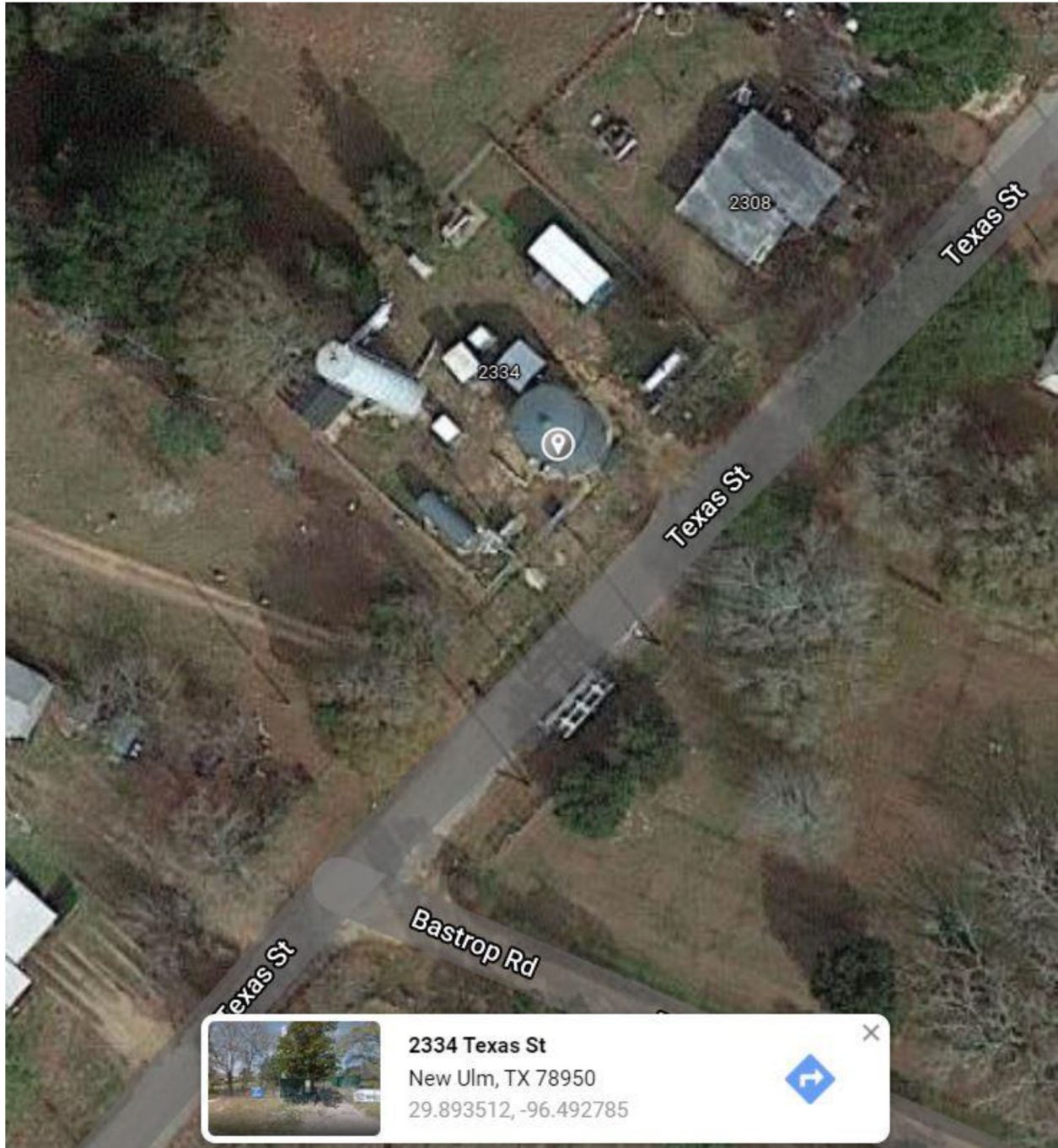
MAILING ADDRESS: PO BOX 73, NEW ULM, TX 78950  
OFFICE ADDRESS: 510 ELM ST, NEW ULM, TX 78950  
OFFICE PHONE #: 979-992-3699

**FACILITIES LIST:**

1. TEXAS ST WATER PLANT & WELL #3
  - a. 2334 TEXAS ST, NEW ULM 78950
  - b. 29.893512, -96.492785
  - c. BLUEBONNET ELECTRIC METER #: 66352585
  - d. This facility contains our entire water plant, including our water tank, pressure tank, stand pipe, chlorination system, and our most recent well, Well #3. We also have a backup generator and 1000 gallon propane tank.
  - e. See Image #1
2. BERNARD RD SEWER PLANT
  - a. 24506 BERNARD RD, NEW ULM 78950
  - b. 29.886672, -96.478314
  - c. BLUEBONNET ELECTRIC METER #: 93373541
  - d. This facility contains our wastewater treatment plant, including our sewage treatment plant, backup generator, 250 gallon propane tank, sewer line jetting machine, backup generator trailer with small propane tank (for lift stations).
  - e. See Image #2
3. TRACK RD WELL #2
  - a. 1264 TRACK RD, NEW ULM 78950
  - b. 29.893637, -96.496220
  - c. BLUEBONNET ELECTRIC METER #: 92494159
  - d. This facility contains our older well, Well #3.
  - e. See Image # 3
4. MISSOURI ST LIFT STATION
  - a. NW CORNER ELM/MISSOURI, NEW ULM 78950
  - b. 29.893284, -96.488734
  - c. BLUEBONNET ELECTRIC METER #: 93373944
  - d. This facility is the lift station for the sewer plant for this side of town.
  - e. See Image # 4
5. WALNUT DR LIFT STATION
  - a. WALNUT DR @ RAILROAD ST, NEW ULM 78950
  - b. 29.888164, -96.488586
  - c. BLUEBONNET ELECTRIC METER #: 15676508
  - d. This facility is the lift station for the sewer plant for this side of town.
  - e. See Image # 5

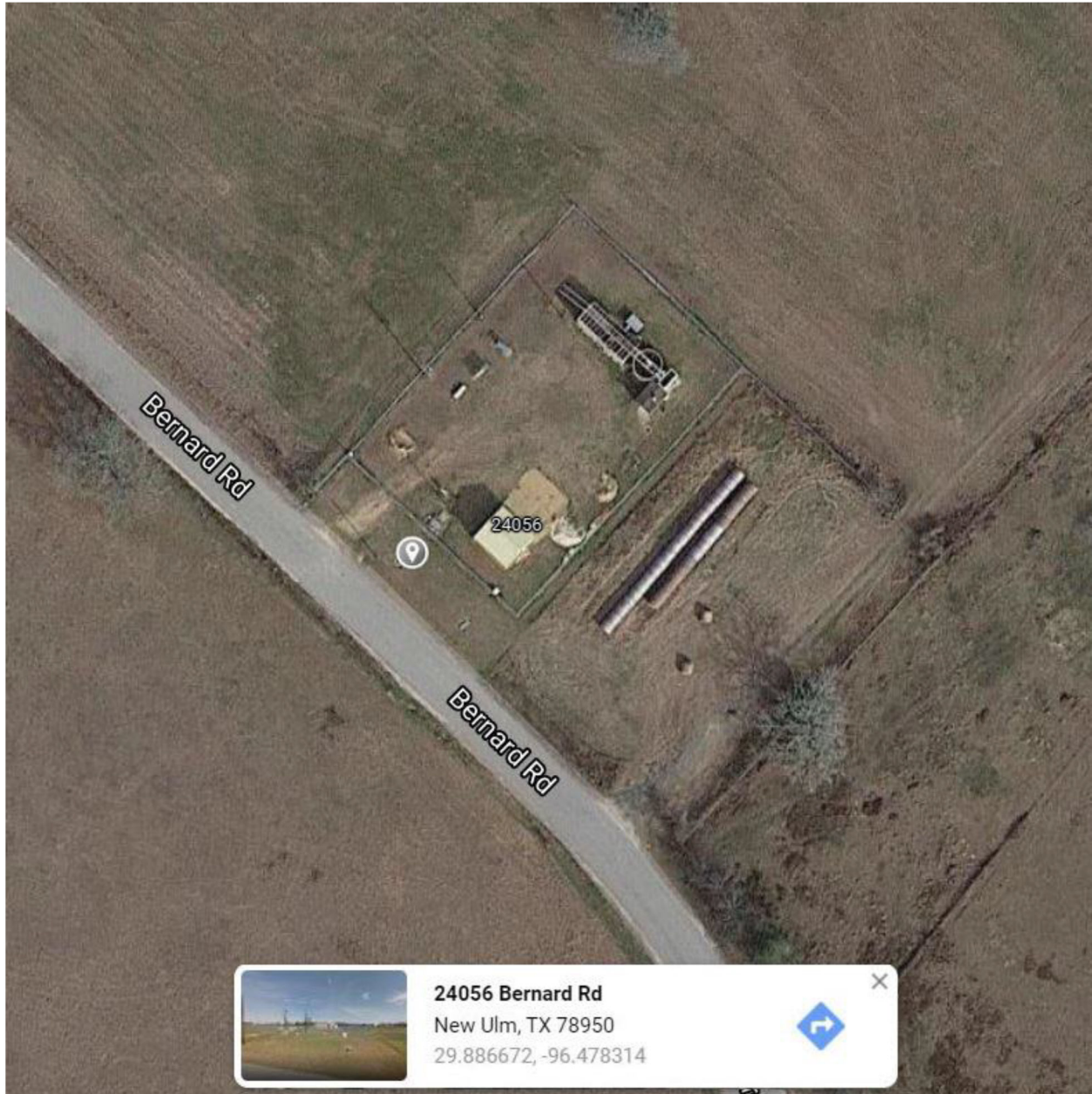
FACILITY IMAGES

1. IMAGE #1: TEXAS ST WATER PLANT & WELL #3



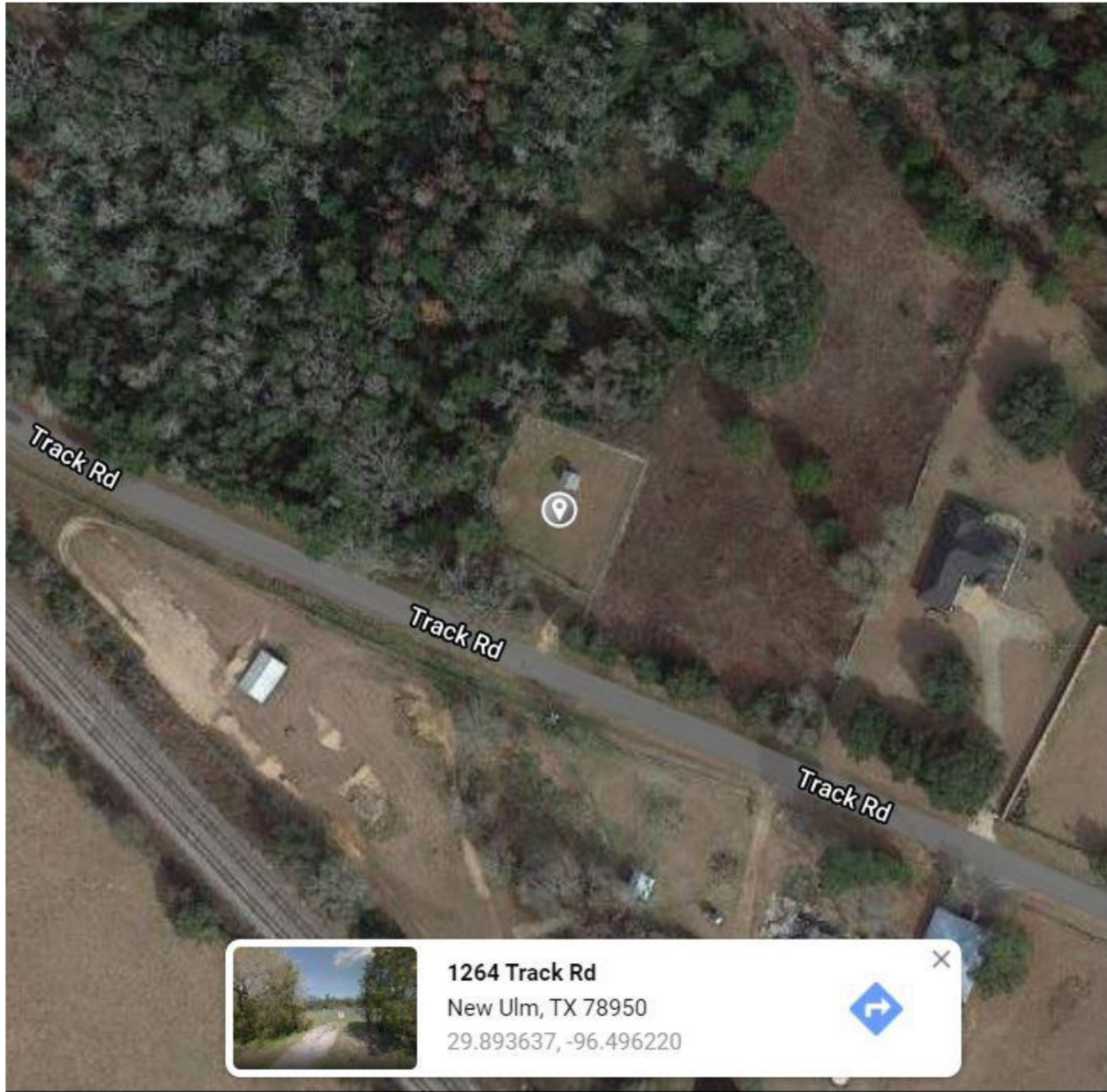
FACILITY IMAGES

2. IMAGE #2: BERNARD RD SEWER PLANT



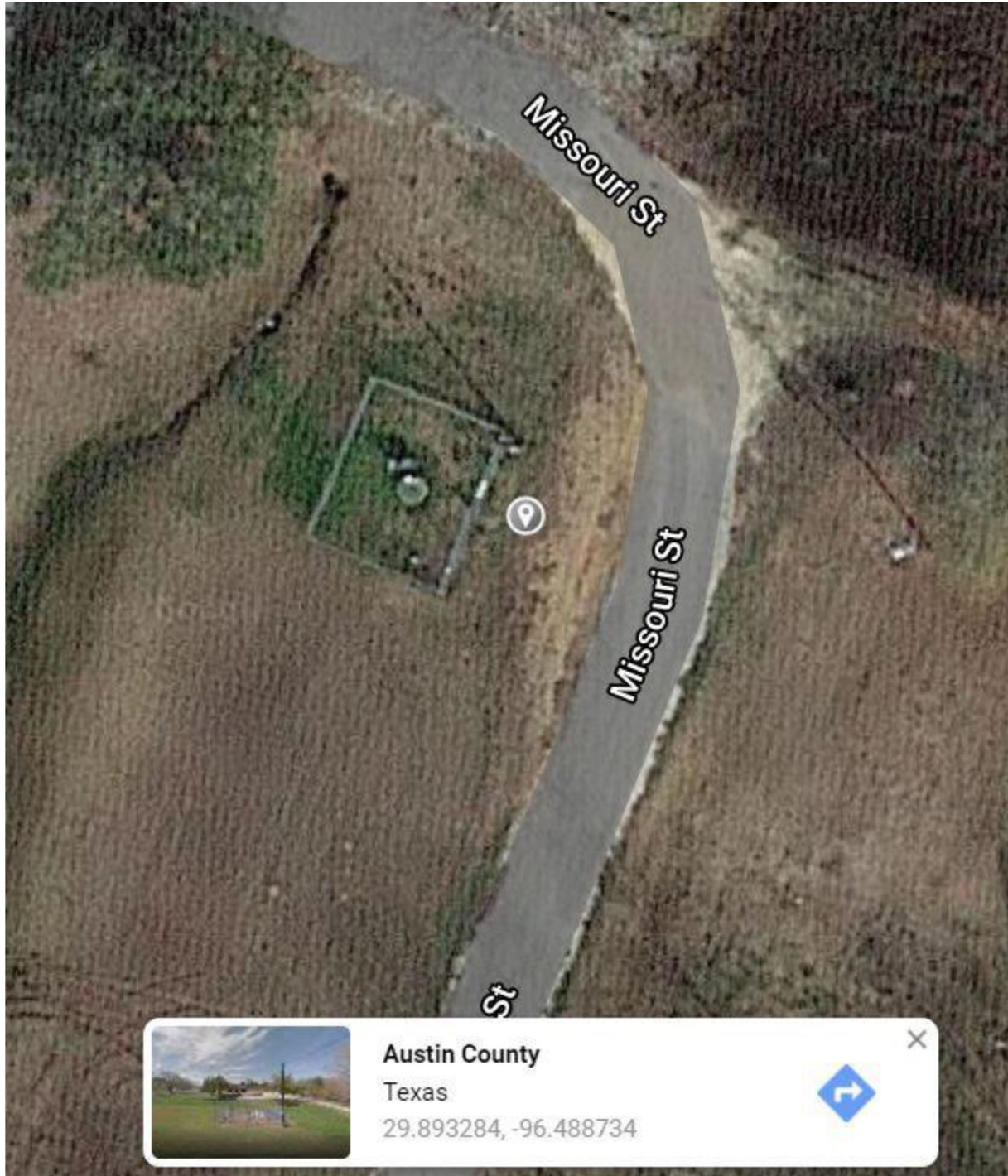
FACILITY IMAGES

3. IMAGE #3: TRACK RD WELL #2



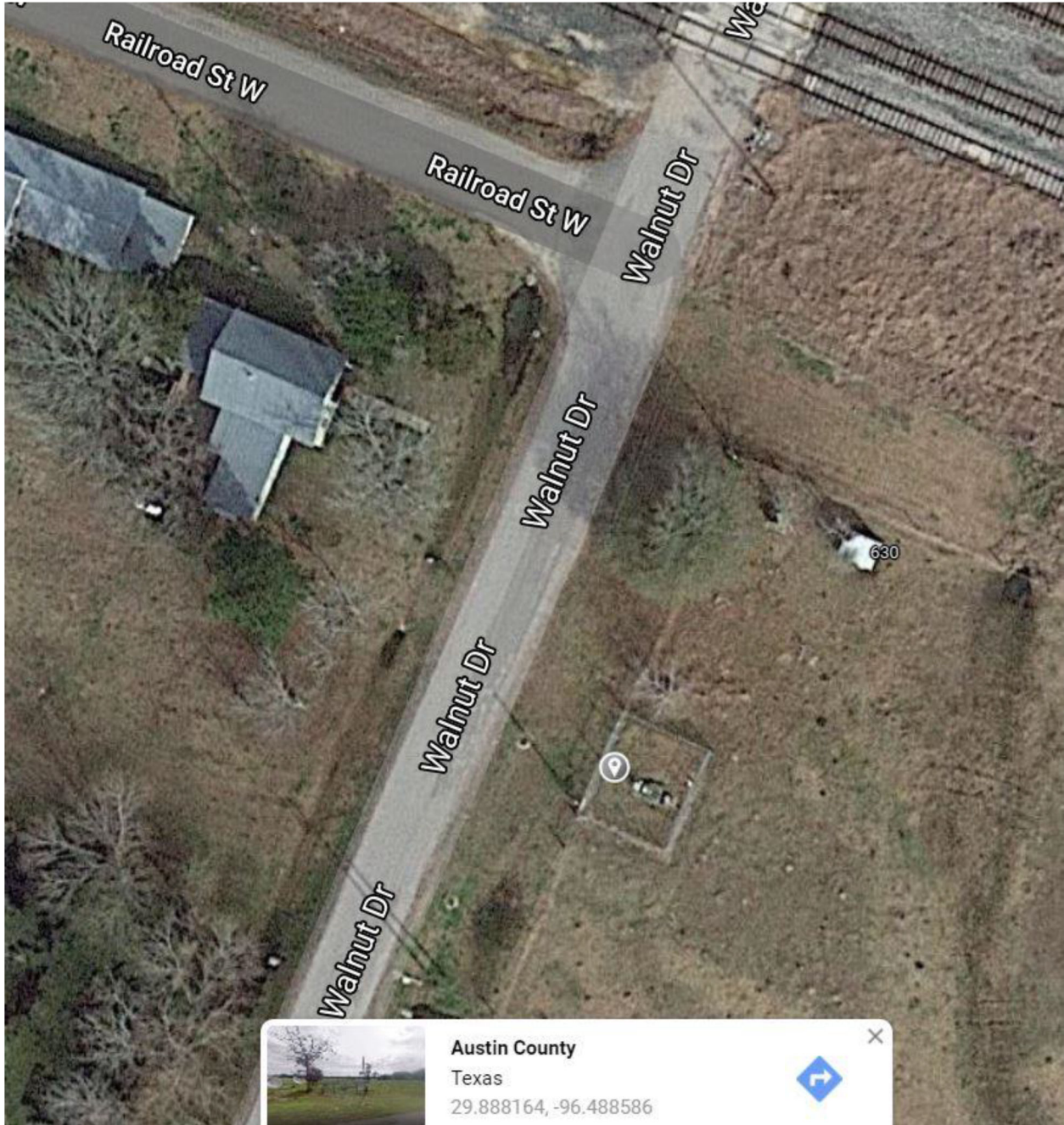
FACILITY IMAGES

4. IMAGE #4: MISSOURI ST LIFT STATION



FACILITY IMAGES

5. IMAGE #5: WALNUT DR LIFT STATION



FACILITY IMAGES

6. IMAGE #6: FULL MAP OF ALL FACILITIES

