



Filing Receipt

Received - 2021-10-29 02:03:09 PM

Control Number - 52299

ItemNumber - 804



October 27, 2021

Public Utility Commission of Texas
1701 N. Congress Avenue
PO Box 13326
Austin, TX 78711-3326

Re: *City of Gainesville Senate Bill 3: Public Water Utility Letter*

To whom it may concern:

See enclosed information fulfilling the November 1, 2021 letter submittal requirement as part of Texas Senate Bill 3.

Name of Water Utility: City of Gainesville

PWSID: TX0490001

Critical Load Status Facilities: the water system facilities detailed below provide critical services (pressure maintenance and/or data communication and operations support) for the City and are therefore considered to be critical load facilities.

Water Treatment Plant and Pump Station: The City's Water Treatment Plant and Pump Station is located at 209 N Lake Lane, Gainesville TX 76240. The site includes a treatment facility, distribution pump station, ground water well and SCADA operations. Most of the City's water is treated at this facility. The pump station contains three pumps total and has a capacity of 4.32 million gallons per day. The facility includes a 0.5-million-gallon clearwell. The ground water well has a capacity of 0.34 million gallons per day. This site is critical for water system pressure maintenance, source water and SCADA operations.

Moss Lake Raw Water Pump Station: Moss Lake Raw Water Pump Station is located along FM1201 on the east side of the Moss Lake Dam. The pump station has three pumps total and has a capacity of 3 million gallons per day. The Moss Lake Raw Water Pump Station is supplied directly from Moss Lake and is transmitted to the City's Water Treatment Plant. This pump station is the City's primary source water facility.

Clements St. Elevated Storage Tank and Pump Station No. 6: The Clements St. Elevated Storage Tank (EST) and Pump Station No. 6 are located at the same site, 1500 N. Clements St., Gainesville TX 76240. The Clements St. EST has an effective volume of 0.5 million gallons. The site also houses Pump Station No. 6 and a ground water well. The pump station has a 0.5-million-gallon ground

storage tank. The pump station has one pump with a capacity of 0.5 million gallons per day. The ground water well has a capacity of 0.36 million gallons per day. This site is critical for water system pressure maintenance and source water.

Pump Station No. 7: Pump Station No. 7 is located at 1519 Rice Ave., Gainesville, TX 76240. The facility includes a 0.225-million-gallon ground storage tank, pump station and ground water well. The pump station has two pumps total and has a capacity of 3.1 million gallons per day. The ground water well has a capacity of 0.72 million gallons per day. This site is critical for water system pressure maintenance and source water.

Pump Station No. 8: Pump Station No. 8 is located on the east side of N. Weaver St. across the street from 1929 N. Weaver St., Gainesville, TX 76240. The facility includes a 0.4-million-gallon ground storage tank, pump station and ground water well. The pump station has 4 pumps total and has a capacity of 6.13 million gallons per day. The ground water well has a capacity of 0.98 million gallons per day. This site is critical for water system pressure maintenance and source water.

Pump Station No. 9: Pump Station No. 9 is located at the corner of FM 1201 and US Hwy 82. The facility includes a 0.25-million-gallon ground storage tank, pump station and ground water well. The pump station has 2 pumps total and has a capacity of 0.96 million gallons per day. The ground water well has a capacity of 0.79 million gallons per day. This site is critical for water system pressure maintenance and source water.

Pump Station No. 10A: Pump Station No. 10A is located at 501 N. Radio Hill Rd., Gainesville, TX 76240. The facility includes a 0.4-million-gallon ground storage tank, pump station and ground water well. The pump station has 4 pumps total and has a capacity of 5.27 million gallons per day. The ground water well has a capacity of 1.5 million gallons per day. This site is critical for water system pressure maintenance and source water.

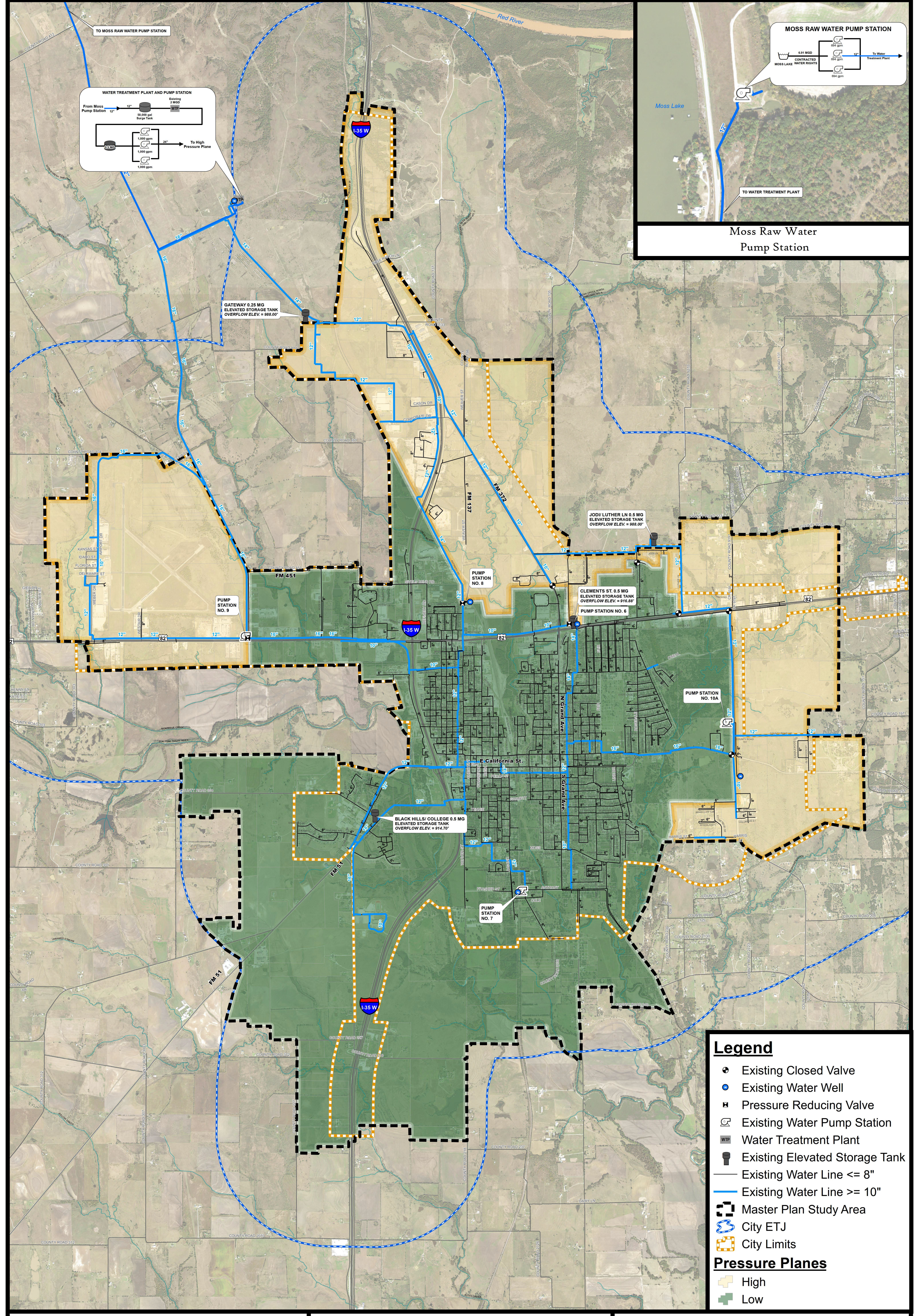
Gateway Elevated Storage Tank: The Gateway Elevated Storage Tank (EST) is located at the corner of County Road 444 and FM 1202. The Gateway EST has an effective volume of 0.25 million gallons. This site is critical for water system pressure maintenance.

Jodi/ Luther Ln. Elevated Storage Tank: The Jodi/ Luther Ln. Elevated Storage Tank (EST) is located at, 2204 N. Aspen Rd., Gainesville, TX 76240. The Jodi/ Luther Ln. EST has an effective volume of 0.5 million gallons. This site is critical for water system pressure maintenance.

Black Hills/ College Elevated Storage Tank: The Black Hills/ College Elevated Storage Tank (EST) is located at 1607 Bonner Rd., Gainesville, TX 76240. The Black Hills/ College EST has an effective volume of 0.5 million gallons. This site is critical for water system pressure maintenance.

Emergency Contact Information:

Primary Point of Contact	Billy Burgan 940-902-1392
Alternative Point of Contact	Ron Sellman 940-668-4540
Utility Mailing Address	Gainesville Public Works 104 W. Hird St. Gainesville, TX 76240



Legend

- Existing Closed Valve
- Existing Water Well
- Pressure Reducing Valve
- Existing Water Pump Station
- Water Treatment Plant
- Existing Elevated Storage Tank
- Existing Water Line <= 8"
- Existing Water Line >= 10"
- Master Plan Study Area
- City ETJ
- City Limits

Pressure Planes

- High
- Low



Gainesville, Texas
 Emergency Preparedness Plan
 Existing Water Infrastructure Map

OCTOBER 2021

This map product is for informational purposes and may not have been prepared for or be suitable for legal, engineering, or surveying purposes. It does not represent an on-the-ground survey and represents only the approximate relative location of property boundaries.