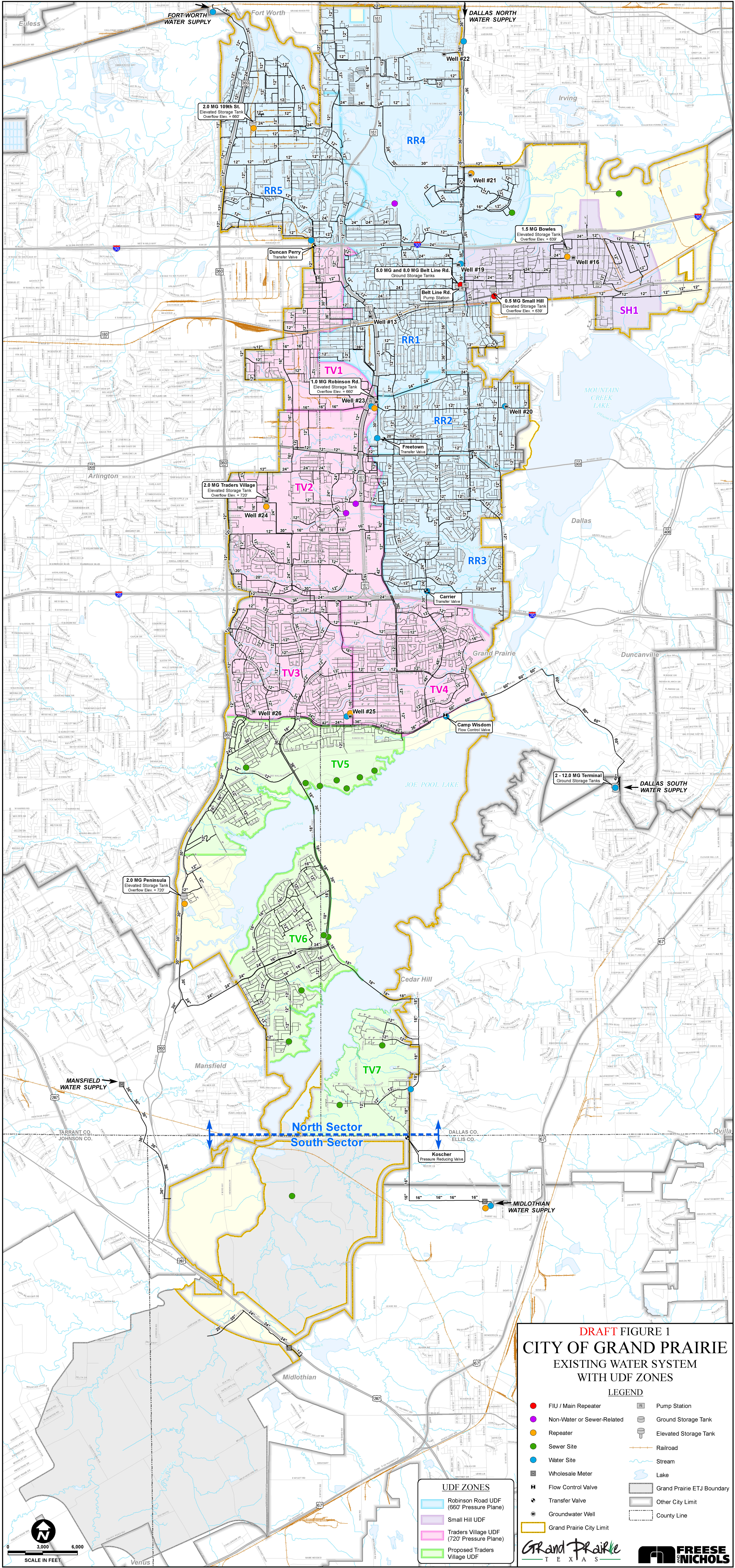




Filing Receipt

Received - 2021-10-29 01:59:38 PM
Control Number - 52299
ItemNumber - 800



DRAFT FIGURE 1
CITY OF GRAND PRAIRIE
EXISTING WATER SYSTEM
WITH UDF ZONES

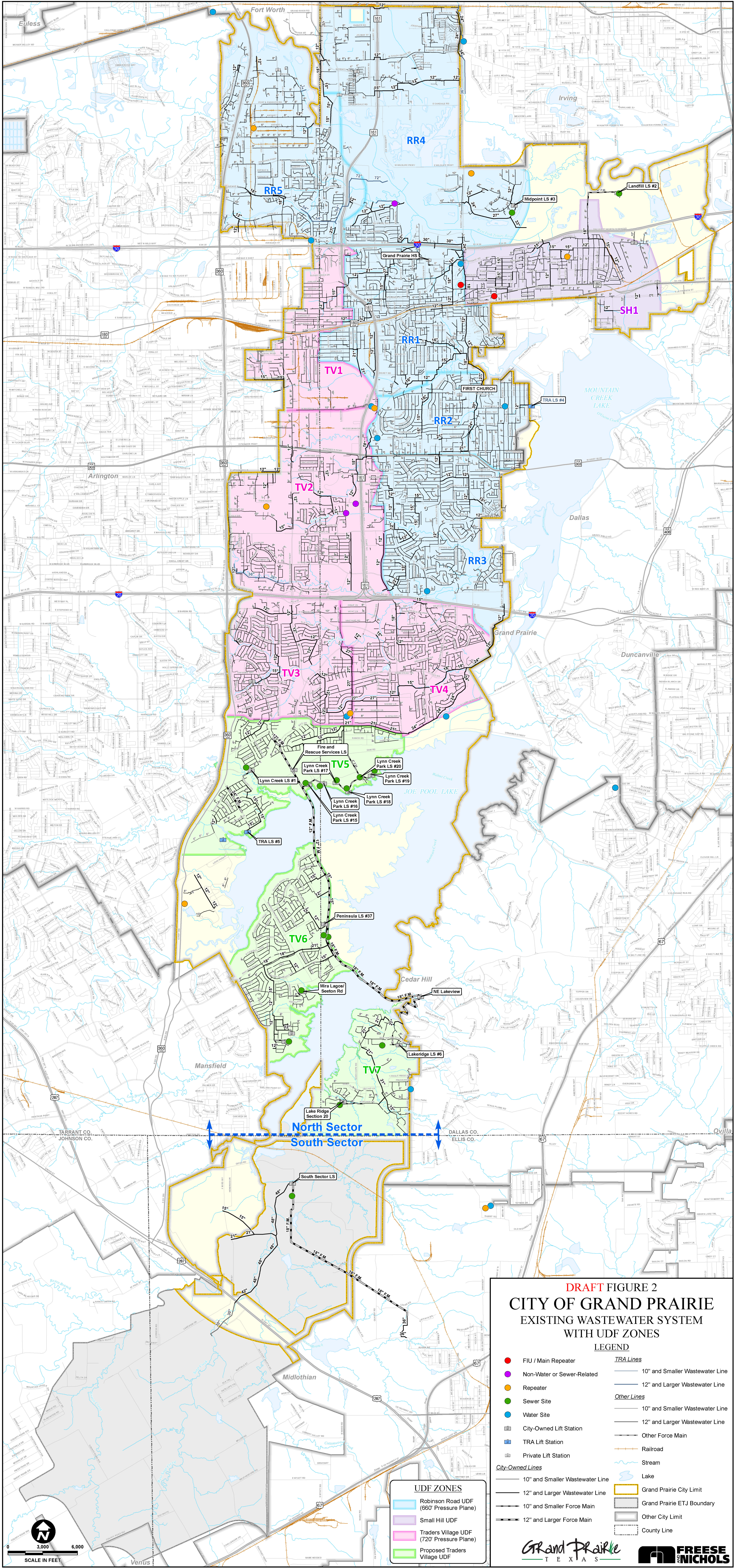
LEGEND

- | | |
|------------------------------|------------------------------|
| ● FIU / Main Repeater | ⊠ Pump Station |
| ● Non-Water or Sewer-Related | ⊞ Ground Storage Tank |
| ● Repeater | ⊡ Elevated Storage Tank |
| ● Sewer Site | — Railroad |
| ● Water Site | — Stream |
| ⊞ Wholesale Meter | — Lake |
| ⊠ Flow Control Valve | — Grand Prairie ETJ Boundary |
| ⊡ Transfer Valve | — Other City Limit |
| ⊞ Groundwater Well | --- County Line |
| — Grand Prairie City Limit | |

UDF ZONES

- Robinson Road UDF (860' Pressure Plane)
- Small Hill UDF
- Traders Village UDF (720' Pressure Plane)
- Proposed Traders Village UDF

Created by FreeSe and Nichols, Inc.
Location: 1000 W. PLANNING CO. / 1000 W. PLANNING CO. / 1000 W. PLANNING CO. / 1000 W. PLANNING CO.
Updated: 10/11/2024, January 11, 2024 10:00 AM



DRAFT FIGURE 2
CITY OF GRAND PRAIRIE
EXISTING WASTEWATER SYSTEM
WITH UDF ZONES

LEGEND

- | | |
|---------------------------------|---------------------------------|
| ● FIU / Main Repeater | TRA LS |
| ● Non-Water or Sewer-Related | 10" and Smaller Wastewater Line |
| ● Repeater | 12" and Larger Wastewater Line |
| ● Sewer Site | Other Lines |
| ● Water Site | 10" and Smaller Wastewater Line |
| ● City-Owned Lift Station | 12" and Larger Wastewater Line |
| ● TRA Lift Station | Other Force Main |
| ● Private Lift Station | Railroad |
| City-Owned Lines | Stream |
| 10" and Smaller Wastewater Line | Lake |
| 12" and Larger Wastewater Line | Grand Prairie City Limit |
| 10" and Smaller Force Main | Grand Prairie ETJ Boundary |
| 12" and Larger Force Main | Other City Limit |
| | County Line |

UDF ZONES

- Robinson Road UDF (660' Pressure Plane)
- Small Hill UDF
- Traders Village UDF (720' Pressure Plane)
- Proposed Traders Village UDF

Grand Prairie
TEXAS

FREESE
NICHOLS

The following files are not convertible:

Grand Prairie Water Only.xlsx Critical Load Application Template -

Please see the ZIP file for this Filing on the PUC Interchange in order to access these files.

Contact centralrecords@puc.texas.gov if you have any questions.

UTILI-FACTS

Project 52299 Senate Bill 3, 87th Legislature, Regular Session Compliance Guidance - Texas Water Code (TWC) § 13.1396

By **November 1, 2021**, “affected utilities” must file specific information with the Public Utility Commission of Texas (PUC) in Project 52299. This information must also be filed with each transmission and distribution service provider, each retail electric provider, and the office of emergency management of each county where the utility has water or sewer facilities that qualify for critical load status.

Q: Am I an “affected utility”?

A: TWC § 13.1394 defines an “affected utility” as a retail public utility, exempt utility, or provider or conveyor of potable or raw water service that:

- Furnishes water service to more than one customer; and
- Is not an affected utility under Section 13.1395.

TWC § 13.1395 defines an “affected utility” as a retail public utility, exempt utility, or provider or conveyor of potable or raw water service that furnishes water service to more than one customer:

- In a county with a population of 3.3 million or more; or
- In a county with a population of 550,000 or more adjacent to a county with a population of 3.3 million or more.

Q: Who is required to file this information with the PUCT?

A: All entities that meet one or both of the definitions for an “affected utility” are required to file this information with the PUCT.

Q: What information must be filed to meet this requirement?

A: You must file a letter identifying the name of your water or sewer utility. Please also include the names of any affiliates and assumed names, if any. In addition, include a list of all the public water systems and sewer systems owned by your utility for which you are filing the information.

- Identify the location and provide a written, general description of all water and sewer facilities that qualify for critical load status (may include maps if this would help you identify the location of your facilities); and

- Emergency contact information for the affected utility, including:
 - The name of the person who will serve as a point of contact and the person’s telephone number;
 - The person who will serve as an alternative point of contact and the person’s telephone number; and
 - The affected utility’s mailing address.

Q: Where must this information be filed?

A: This information must be filed with each of the following:

- 1) the PUCT,
- 2) each electric utility that provides transmission and distribution services to you. Your transmission and distribution utility is known as your TDU. A TDU is the company that distributes electricity from power generation to homes and businesses in Texas. To find out who your TDU is, please review the map at: <https://www.puc.texas.gov/industry/maps/maps/tdumap.pdf>,
- 3) each retail electric provider that sells electric power to you,
- 4) the office of emergency management of each county in which the utility has water and wastewater facilities that qualify for critical load status, and
- 5) the division of emergency management of the governor at: Texas Division of Emergency Management, Texas Department of Public Safety, P.O. Box 4087, Austin, TX 78773-0220.

Please file this information in Central Records, Project 52299. You may request that the information be filed confidentially if you feel that publicly filing facility location and possibly maps will make your water or wastewater utilities more vulnerable. For instructions on the PUCT’s filing requirements and on how to file with the PUCT, please click on the link below. Instructions on how to file confidentially are also located at this link.

<https://www.puc.texas.gov/industry/filings/FilingProceed.aspx>

For instructions on how to file with your electric providers and the office of emergency management of each county in which you have water or wastewater facilities, please contact them directly.

Q: Is there a deadline?

A: Yes, the deadline to comply with this new requirement is November 1, 2021.