



Filing Receipt

Received - 2021-10-29 07:39:37 AM
Control Number - 52299
ItemNumber - 706

The Public Utility Commission of Texas
 Central Records
 1701 N. Congress P.O. Box 13326
 Austin, Texas 782-3326

To Whom it May Concern:

RE: Project 52299

Affiliated/ Assumed Name(s) (if applicable): N/A

Per Senate Bill 3 (SB 3), 87th Texas Legislature which passed on June 8th, as an Affected Utility, The City of Jefferson, TX provides Water services and Wastewater Collection for Jefferson, Texas in Marion County, TX. The following public water system(s) and sewer utility system(s) are owned by The City of Jefferson, TX:

Name:	City of Jefferson- Water Utility, CCN 10502	
a. Address/Location of Utility	300 FM 881	Meter # 485572207
b. Enter General Description of facility that qualify for Critical Load Status.	Water Pump - (Beamer Hill) Water Tower – (Alley St.) Standard Pipe – (Bulldog Dr.)	Meter # 158376471 Meter # 534069112 Meter # 533115417
c. TDU Provider	Southwestern Electric Power Company (SWEPCO)	
d. Retail Provider	SWEPCO	
Name:	The City of Jefferson Wastewater Treatment Facility, CCN 20101	
a. Address/Location of Utility	1401 North Line Street, Jefferson, Marion County, Texas 75657	Meter # 435658593
b. Enter General Description of facility that qualify for Critical Load Status.	Blackburn’s Lift Station - (HWAY 49 West) Don Juan’s Lift Station – (HWAY 59 South) Alley St. Lift Station Marshall St. Lift Station Main Lift Station – HWAY 49 East Cemetery Lift Station – Line St.	Meter # 459010558 Meter # 458965762 Meter # 158375996 Meter # 158375945 Meter # 158376269 Meter # 435684483
c. TDU Provider	SWEPCO	
d. Retail Provider	SWEPCO	

For all questions or communications regarding The City of Jefferson, TX and/or emergency power at the above locations shall be addressed to:

Point of Contact: Allan Whatley, Director of Public Works 903-665-3922

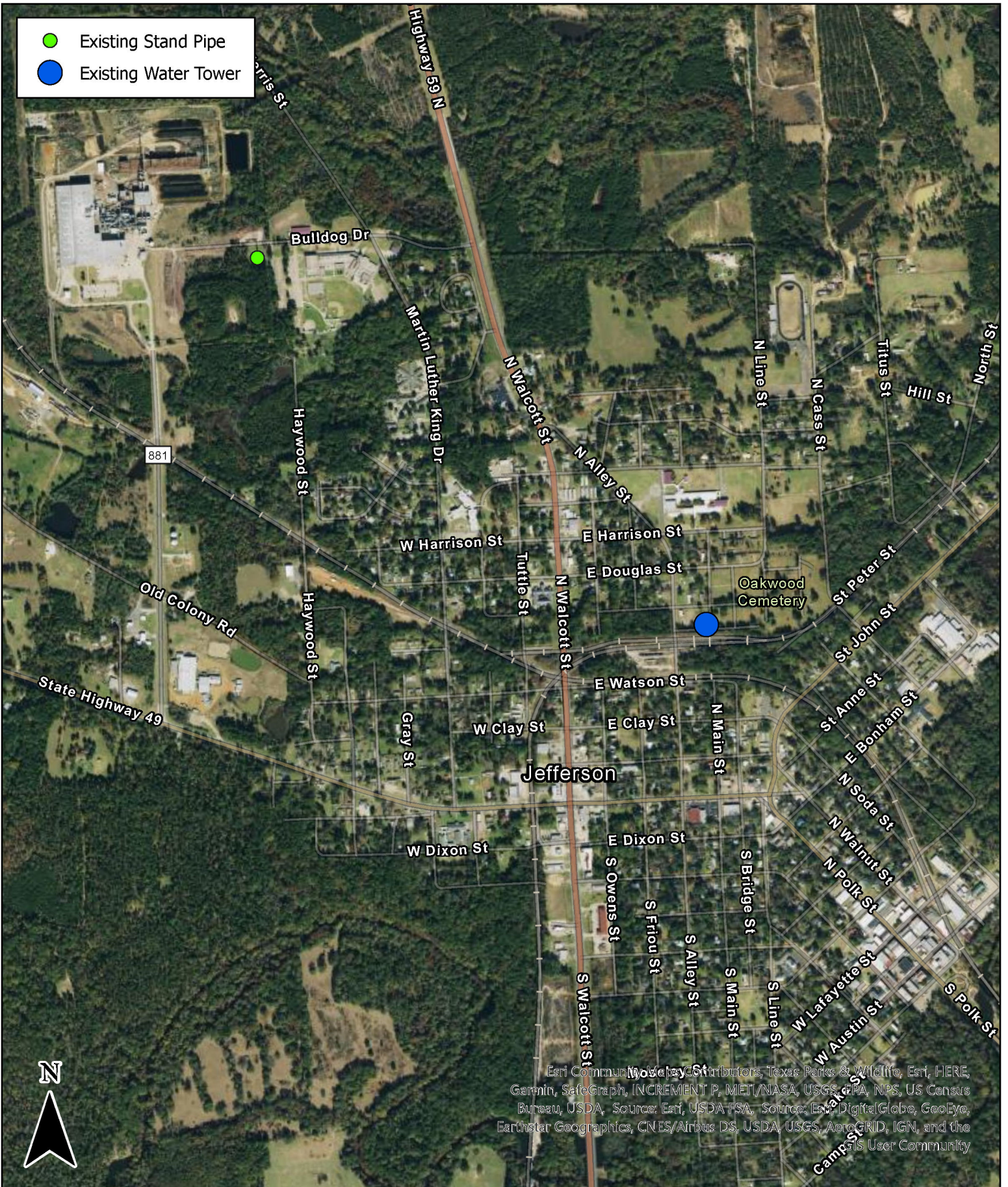
Alternative Point of Contact: Eric Kuykendall, City Administrator 903-665-3922

City of Jefferson, TX
102 N. Polk St.,
Jefferson, Texas, 75657

APPENDIX A

MAP(S) OF WATER AND/OR SEWER FACILITY

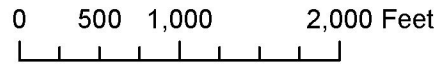
- Existing Stand Pipe
- Existing Water Tower





Esri CommunityWorks Contributors, Texas Parks & Wildlife, Esri, HERE, Garmin, SafeGraph, INCREMENT P, MET/NASA, USGS, EPA, NPS, US Census Bureau, USDA, Source: Esri, USDA FSA, Source: Esri, DigitalGlobe, GeoEye, Earthstar Geographics, CNES/Airbus DS, USDA, USGS, AeroGRID, IGN, and the GIS User Community

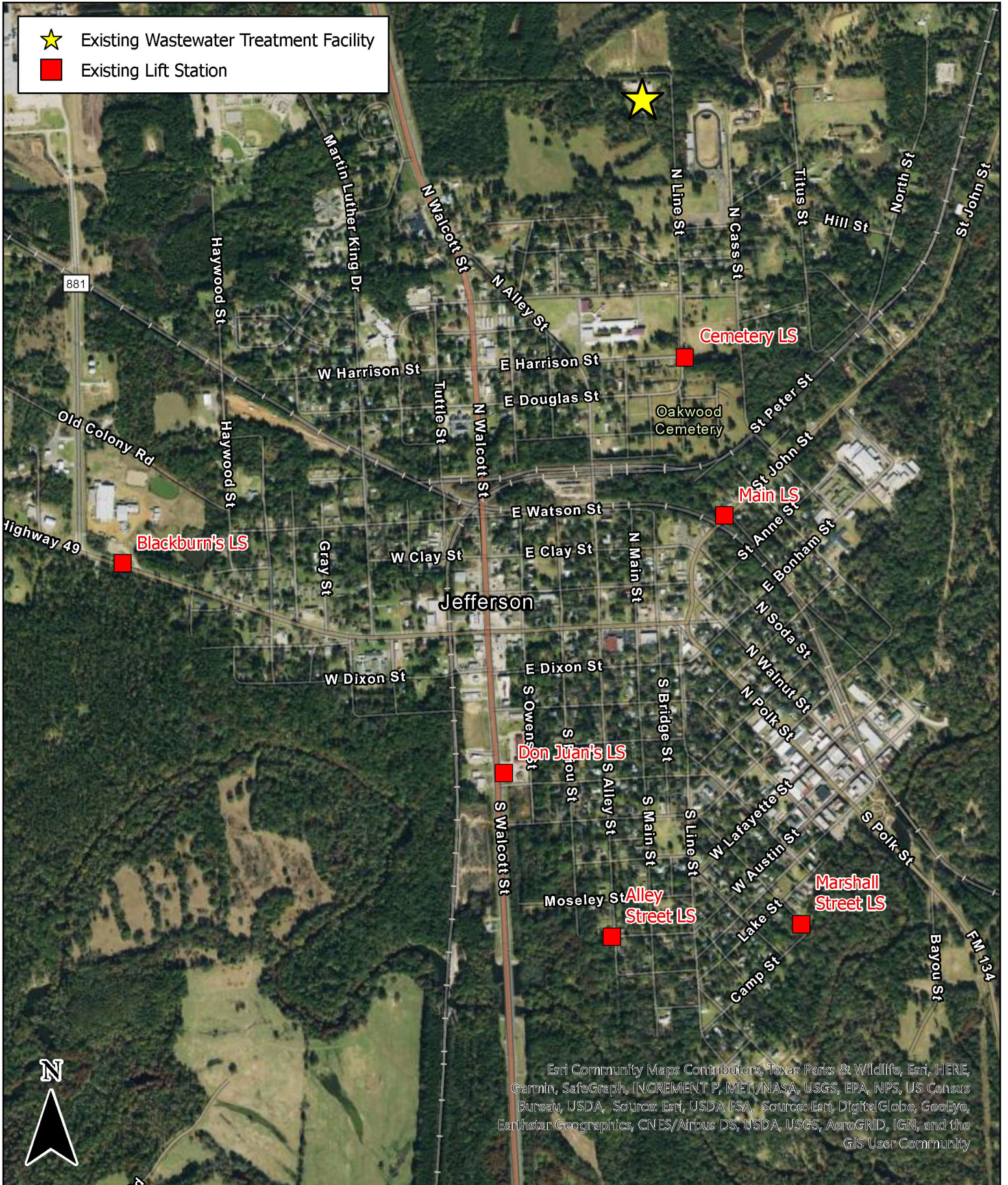
City of Jefferson
CCN 10502
Water System

1" = 1,200'



SCHAUMBURG & POLK, INC.
BEAUMONT | HOUSTON | GARLAND | TERRELL | TYLER
320 S. Broadway Ave., Suite 200
Tyler, TX 75702
903.595.3913
Firm Registration No. F-520

-  Existing Wastewater Treatment Facility
-  Existing Lift Station



Esri Community Maps Contributors, Texas Parks & Wildlife, Esri, HERE, Garmin, SafeGraph, INCREMENT P, MET/NASA, USGS, EPA, NPS, US Census Bureau, USDA, Source: Esri, USDA FSA, Source: Esri, DigitalGlobe, GeoEye, Earthstar Geographics, CNES/Airbus DS, USDA, USGS, AeroGRID, IGN, and the GIS User Community



BEAUMONT | HOUSTON | GARLAND | TERRELL | TYLER
 320 S. Broadway Ave., Suite 200
 Tyler, TX 75702
 903.595.3913
 Firm Registration No. F-520

City of Jefferson
 CCN 20101
 Wastewater System

1" = 1,200'

