



Filing Receipt

Received - 2021-10-28 01:32:57 PM
Control Number - 52299
ItemNumber - 605

City of Hondo Water System

PWS # 1630002

Emergency Contact : Jeremiah Socarras Phone: 8305384084

Alternate contact: David Baker Phone : 8309282850

City of Hondo

1600 Ave.M

Hondo Tx 78861

To: Whom it may concern

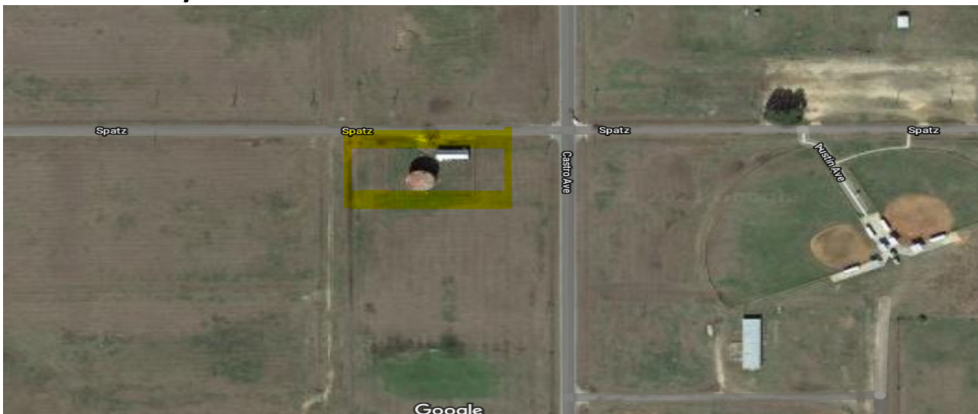
The following are the locations for the City of Hondo that qualify for critical load status. These locations are critical infrastructure and are needed for supply of water to the citizens of Hondo. These facilities are main factors for health, medical and sanitary needs of the community. The following is a list of the facilities and locations as mandated to be filed by senate bill 3 , TWC 13.1396, project 52299.

AIR BASE WELL #1

601 SPATZ HONDO TX 78861

The Air Base water plant is located on the corner of Spatz and Castro Ave. The plant contents are as follows:

- 1: Turbine centrifugal pump with a 125 HP motor
This well pumps raw water from Edwards Aquifer.
- 2: A fiberglass chlorine room
That houses the 150lb chlorine cylinders, scales, CL2 injector, CL2 cylinder regulators, a CL2 switch over unit, and sight/feed rate control panel.
- 3: A 500,000 gallon ground storage tank
This tank receives the raw well water after it is injected with chlorine, and provides finished water for booster pumps to pump into the distribution system
- 4: Two 50HP centrifugal pumps
These pumps take the finished water from the storage tank and deliver it to the distribution system.



GOLF COURSE WELL #2

709 DISOSWAY HONDO TX 78861

The Golf Course water plant is located on the corner of Disoway and Arnold.

1: Turbine centrifugal pump with a 125 HP motor

This well pumps raw water from Edwards Aquifer.

2: A fiberglass chlorine room

That houses the 150lb chlorine cylinders, scales, CL2 injector, CL2 cylinder regulators, a CL2 switch over unit and sight/feed rate control panel.

3: A 500,000 gallon ground storage tank

This tank receives the raw well water after it is injected with chlorine, and provides finished water for booster pumps to pump into the distribution system

4: Two 50HP centrifugal pumps

These pumps take the finished water from the storage tank and deliver it to the distribution system.



YARD WELL #3

905 20" STREET HONDO TX 78861

- 1: Turbine centrifugal pump with a 200 HP motor**
- 2: A fiberglass chlorine room**
That houses the 150lb chlorine cylinders, scales, CL2 injector, CL2 cylinder regulators, a CL2 switch over unit and sight/feed rate control panel.
- 3: A 300,000 gallon ground storage tank**
This tank receives the raw well water after it is injected with chlorine, and provides finished water for booster pumps to pump into the elevated storage tank and distribution system.
- 4: Two 50HP centrifugal pumps**
These pumps take the finished water from the storage tank and deliver it to the distribution system and the Elevated storage tank.
- 5: A 250,000 gallon elevated storage tank**
This tank provides more storage of finished water and provides operating pressure to the distribution system.



PRISON WEII #4

160 CR 424 HONDO TX 78861

This water plant is located on County Road 424 outside the prison.

1: Turbine centrifugal pump with a 350 HP motor

2: A concrete chlorine room

That houses the 150lb chlorine cylinders, scales, CL2 injector, CL2 cylinder regulators, a CL2 switch over unit and sight/feed rate control panel.

3: A 300,000 gallon elevated storage tank

This tank provides storage of finished water and provides operating pressure to the distribution system



WESTSIDE TANK SITE

801 AVE Y HONDO TX 78861

1. 500,000 gallon elevated storage tank and water system SCADA infrastructure

