



Control Number: 52299



Item Number: 576

Utopia Water Supply Corporation

P. O. Box 414, 725 Main Street, Utopia, TX 78884

2021 OCT 20 AM 9:59

830-966-4186

TO: PUCT
PROJECT 52299
SJ: REQUIRED LETTER

FROM:
UTILITY NAME: UTOPIA WATER SUPPLY CORPORATION

THIS WATER SYSTEM HAS 2 GROUNDWATER WELLS:

WELL #3:

G2320045C

FACILITIES:

CLEAR WELL, CONTROL ROOM

ADDRESS:

HOUSTON STREET

UTOPIA, TX 78884

WELL # 4:

G2320045D

FACILITIES: STANDPIPE, PRESSURE TANK, CONTROL ROOM

ADDRESS:

181 COUNTY RD. 357

UTOPIA, TX 78884

EMERGENCY CONTACT INFORMATION:

MAIN CONTACT: TRAVIS KILLOUGH – OPERATOR

PHONE # 830-591-9631

1ST ALTERNATE CONTACT: CATHY COMPARETTO – OFFICE MANAGER

PHONE # 830-966-4186

2ND ALTERNATE CONTACT: CHAD HILLIS – UTOPIA WATER WELL SERVICE

PHONE # 830-966-3456

MAILING ADDRESS:

UTOPIA WSC

P. O. BOX 414

UTOPIA, TX 78884

576

UTILI-FACTS

Project 52299

Senate Bill 3, 87th Legislature, Regular Session Compliance Guidance - Texas Water Code (TWC) §13.1396

By **November 1, 2021**, entities that meet the definition of “affected utilities” under TWC §13.1394 must file specific information with the Public Utility Commission of Texas (PUCT) in Project 52299. This information must also be filed with each transmission and distribution service provider, each retail electric provider, and the office of emergency management of each county where the utility has water or sewer facilities that qualify for critical load status.

Q: Am I an “affected utility”?

A: TWC §13.1394 defines an “affected utility” as a retail public utility, exempt utility, or provider or conveyor of potable or raw water service that:

- Furnishes water service to more than one customer; and
- Is not an affected utility under TWC §13.1395 (Fort Bend or Harris Counties).

Q: Who is required to file this information with the PUCT?

A: All entities that meet the definition of an “affected utility” as defined in TWC §13.1394 are required to file this information with the PUCT. Entities located in Fort Bend and Harris Counties are exempt from this requirement as they do not meet the definition of “affected utility” in TWC §13.1394.

Q: What information must be filed to meet this requirement?

A: You must file a letter identifying the name of your water or sewer utility. Please also include the names of any affiliates and assumed names, if any. In addition, include a list of all the public water systems and sewer systems owned by your utility for which you are filing the information.

- Identify the location and provide a written, general description of all water and sewer facilities that qualify for critical load status (may include maps if this would help you identify the location of your facilities); and
- Emergency contact information for the affected utility, including:
 - The name of the person who will serve as a point of contact and the person’s telephone number;

- ✓ ○ The person who will serve as an alternative point of contact and the person’s telephone number; and
- ✓ ○ The affected utility’s mailing address.

Q: Where must this information be filed?

A: This information must be filed with each of the following:

- ✓ 1) the PUCT,
- ✓ 2) each electric utility that provides transmission and distribution services to you. Your electric utility is the company that distributes electricity from power generation facilities to homes and businesses in Texas.
- 3) each retail electric provider that sells electric power to you (applies only in competitive areas of ERCOT),
- ✓ 4) the office of emergency management of each county in which the utility has water and wastewater facilities that qualify for critical load status, and
- ✓ 5) the division of emergency management of the governor at: Texas Division of Emergency Management, 1033 La Posada Ste 300, Austin, TX 78752.

Please file this information in Central Records, Project 52299. You may request that the information be filed confidentially if you feel that publicly filing facility location and possibly maps will make your water or wastewater utilities more vulnerable. For instructions on the PUCT’s filing requirements and on how to file with the PUCT, please click on the link below. Instructions on how to file confidentially are also located at this link.

<https://www.puc.texas.gov/industry/filings/FilingProceed.aspx>

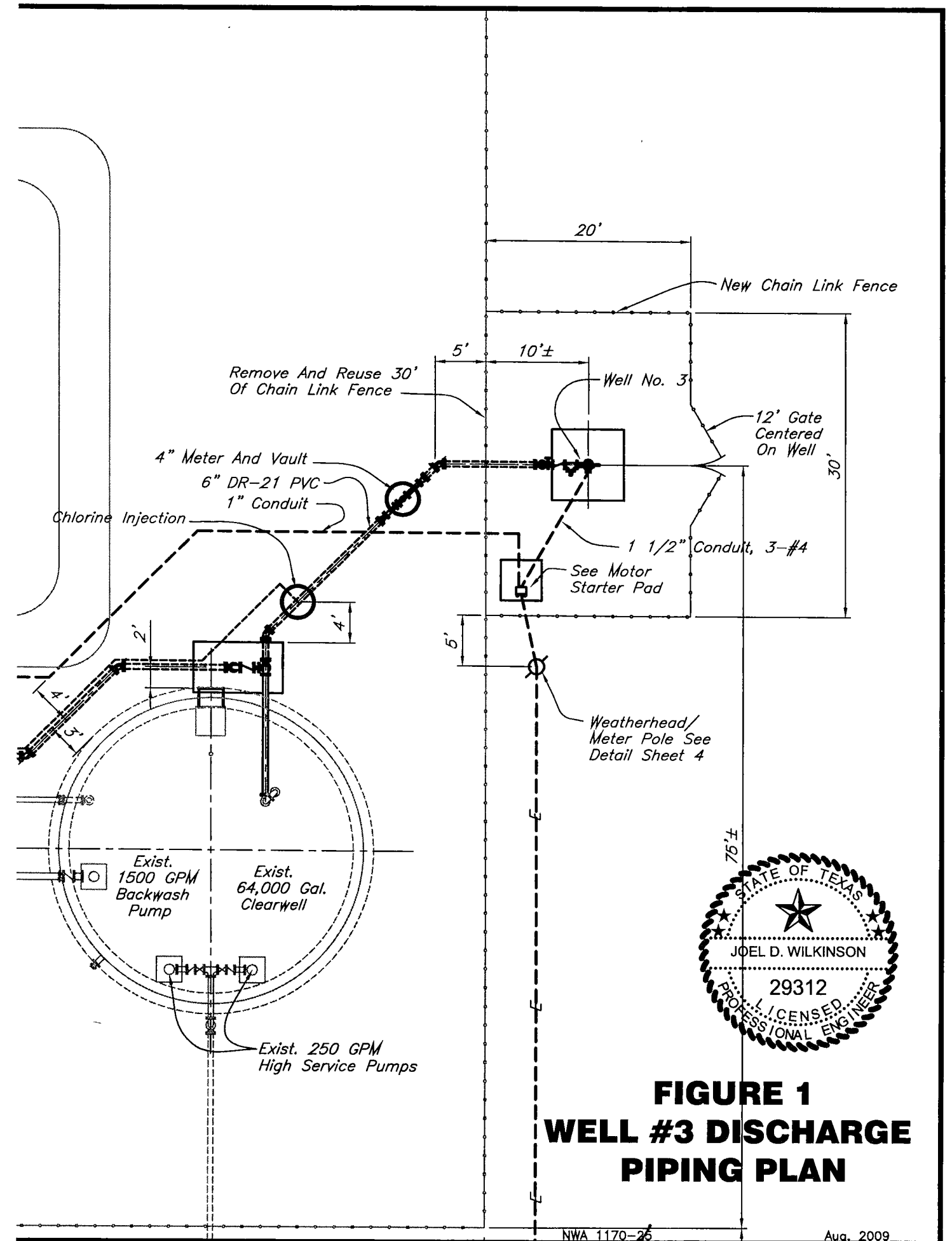
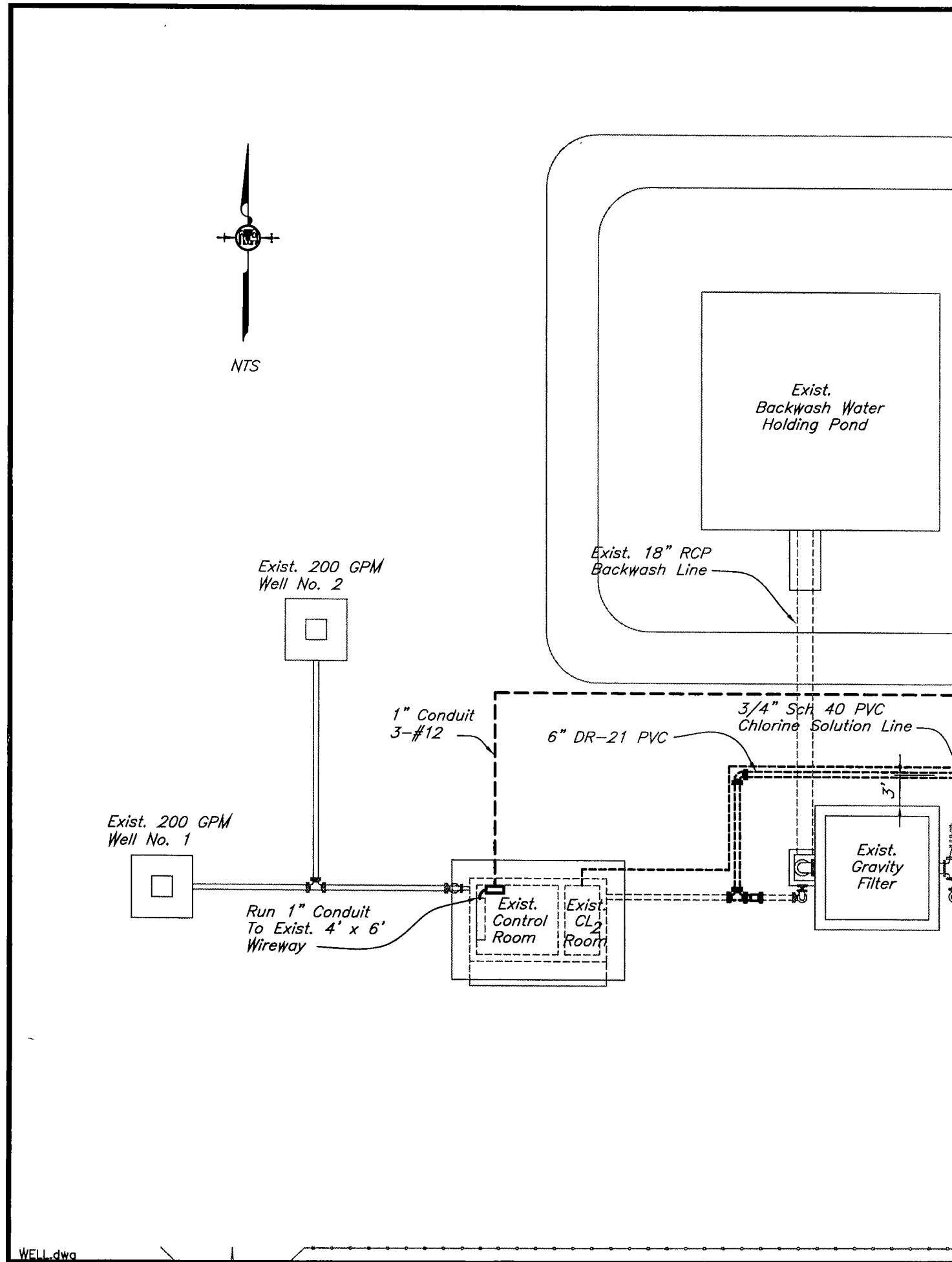
For instructions on how to file with your electric providers and the office of emergency management of each county in which you have water or wastewater facilities, please contact them directly.

Q: Is there a deadline?

A: Yes, the deadline to comply with this new requirement is November 1, 2021.

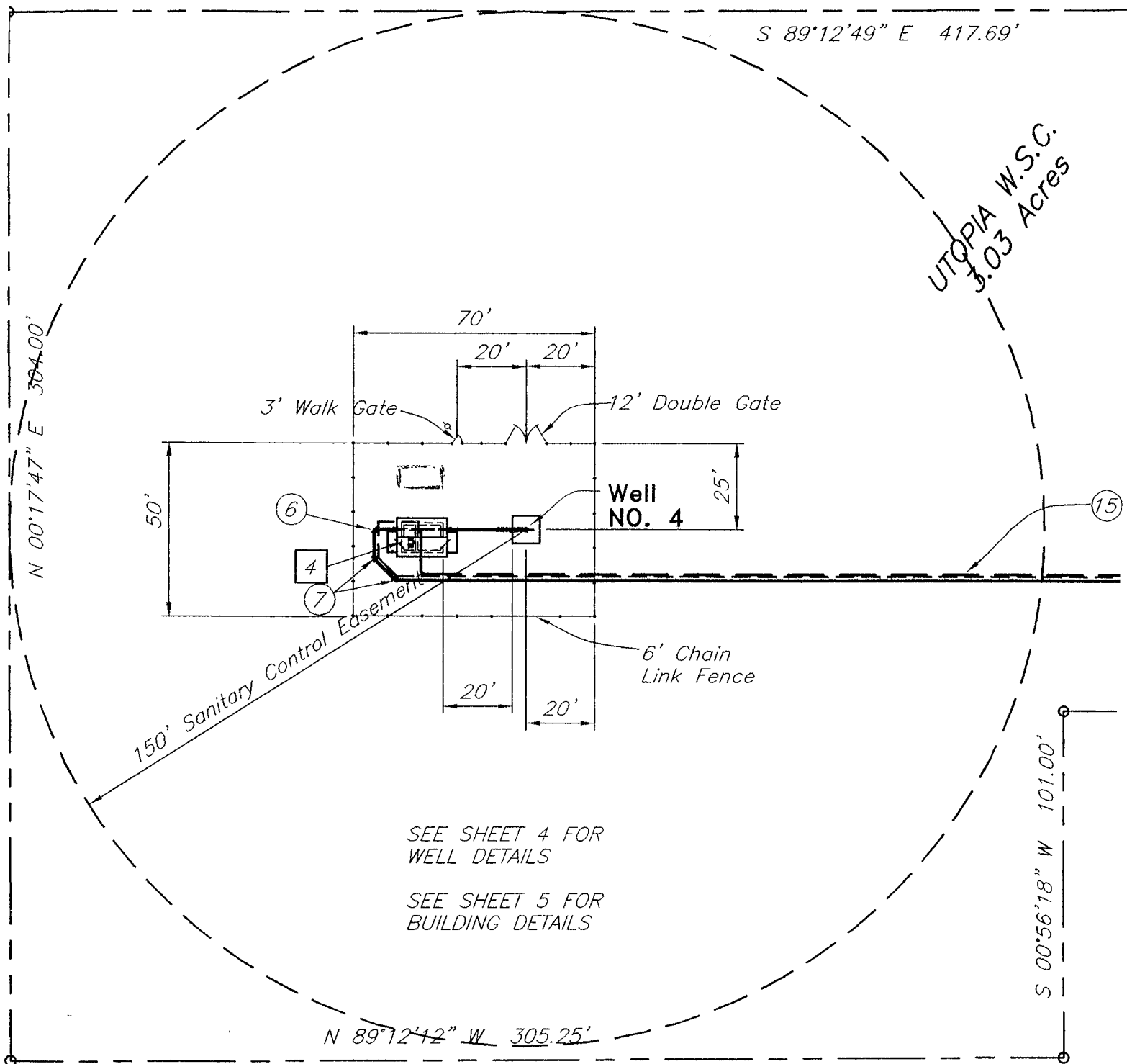
Q: What if I have additional questions?

A: Please email the PUCT at DUO@puc.texas.gov or call (512)936-7405 if you have additional questions.



Well 4

SECO RIDGE LOT

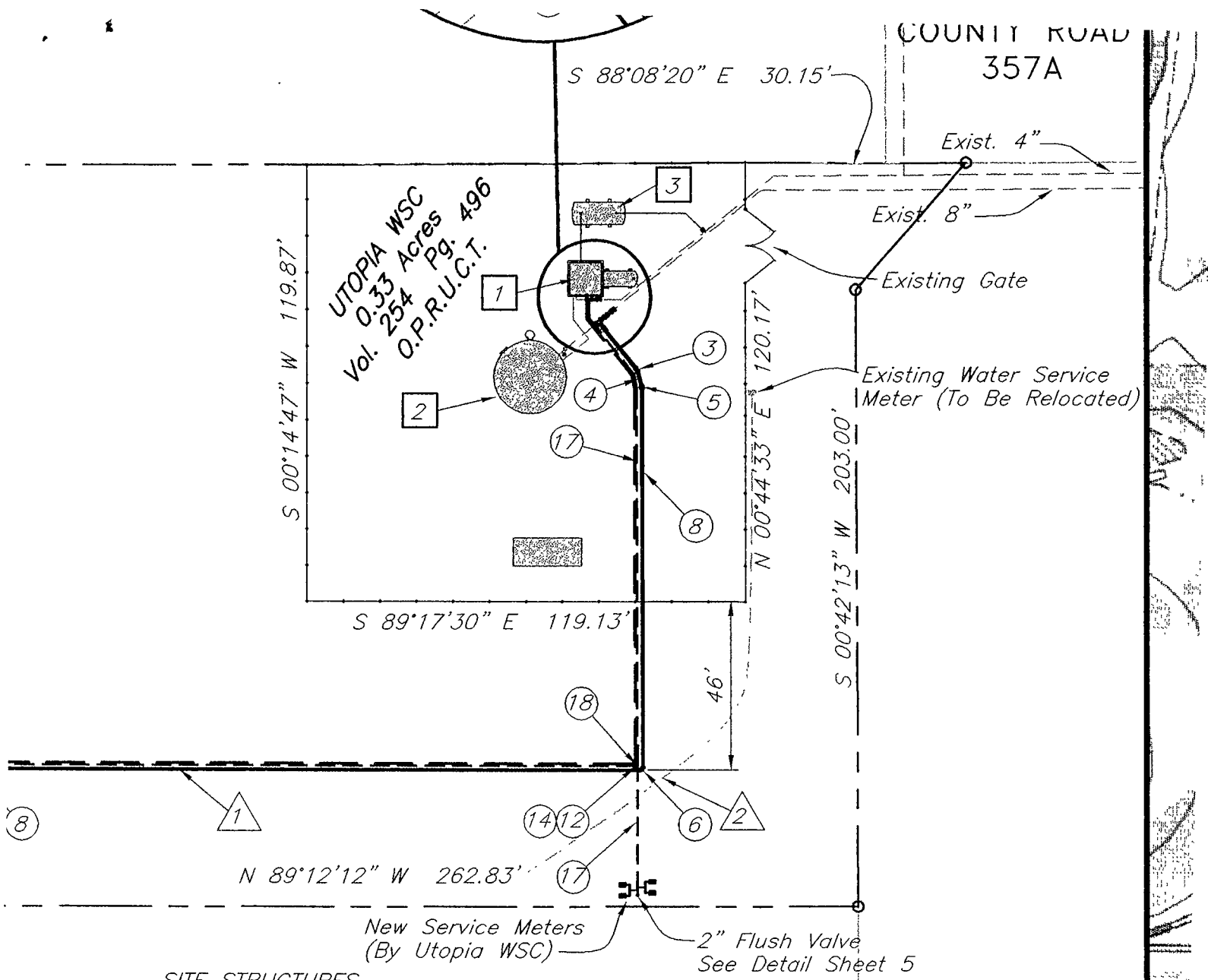


UTOPIA W.S.C.
3.03 Acres

UTOPIA ESTATES
LOT 5
Side 253-B
R.U.C.T.

W. DEICHER III
3.16 Acres Tract
200 800 3742
County, Texas

- ① 8" x 6" D.I. Reducin
- ② 6" RW Gate Valve, M
- ③ 6" D.I. 22 1/2" Ben
- ④ 6" x 60" SDR-21 F
- ⑤ 6" D.I. 11 1/4" Per.



SITE STRUCTURES

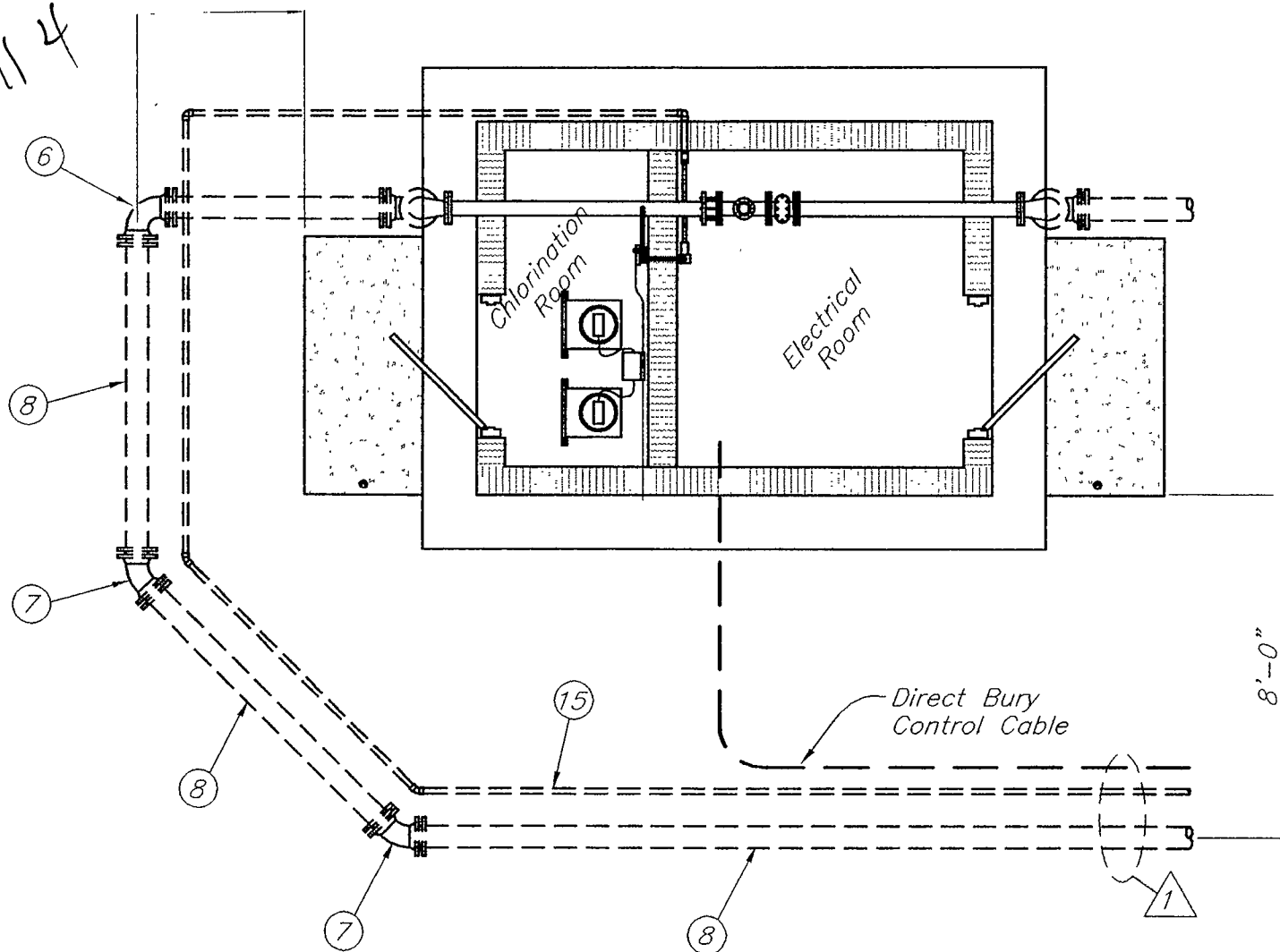
- 1 Seco Ridge Pressure Zone Service Pumps
- 2 Existing 86,000 Gallon, 20' Diameter x 38' Height Elevated/Ground Storage Tank, H.G.L. 1500', Overflow 1508'
- 3 2,500 Gallon (6' Diameter x 12') Hydropneumatic Tank
- 4 Control/Chlorination Building

PIPE AND FITTING SCHEDULE

- | | |
|-----------|---|
| pe, MJ | (11) 8" D.I. Long Sleeve, MJ |
| Mueller | (12) 1 1/2" Bronze Gate Valve, Thd. w/ 2 |
| 1/2" | 1 1/2" x 6" Long Brass Nipples And Valve Box |
| Spool, PE | (13) 4" x 2" D.I. Tapped Tee, MJ |
| 1/2" | (14) 1 1/2" PVC Coupling, Thd. x Solvent Weld |

RAY TAMPKE
 100 Acres
 Vol. 459 Pg. 895
 O.P.R.U.C.T.

Well 4



BUILDING ORIENTATION

NTS

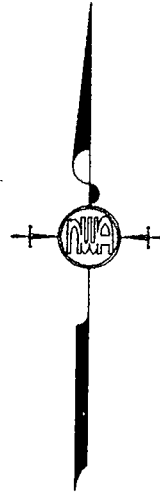
CONSTRUCTION NOTES

1 Items 8, 15, And Control Cable Between Existing Building And Well No. 4 Building To Be Laid In Common Ditch Line. (See Sheet 6 Detail.

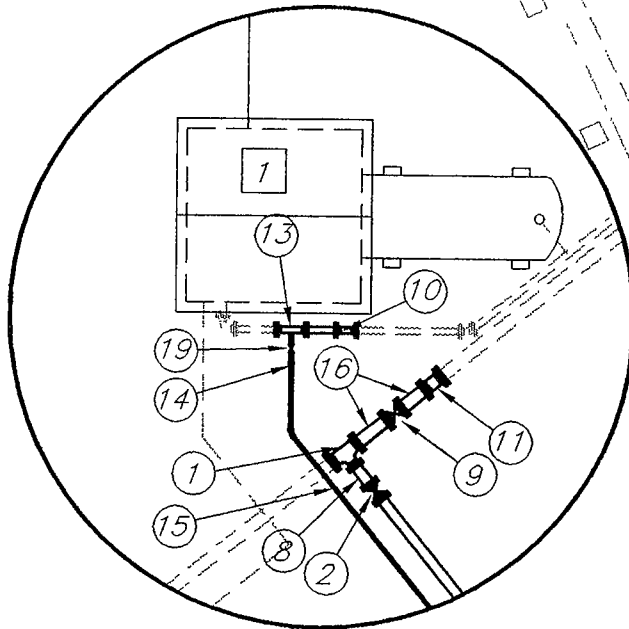
2 CAUTION! Existing Water Service Line To Remain In Service

SECO RIDGE SUBDIVISION
LOT 14

S 89°12'49" E 417.69'



COUNTY ROAD 357A



COUNTY ROAD 357A

S 88°08'20" E 30.15'

Exist. 4"

0.96

3

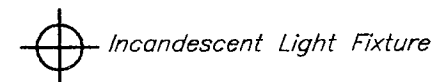
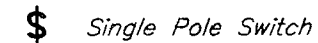
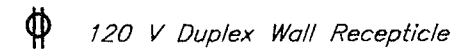


Change, Cross Used AS Elbow
Change
e Connection
chor
Change Vertical, Bend Anchor



N.T.S.

ELECTRICAL LEGEND



— . — Conduit Surface Mount

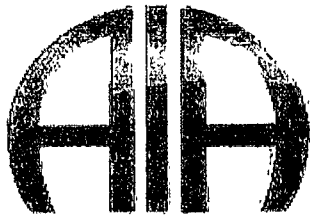
— — — — — Conduit In Slab Or Above Ceiling

— — — Conduit Under Ground



N.T.S.

hall Have



INSURANCE AGENCY

Utopia Water Supply Corporation

Revised 12/22/2020

Loc.	Description	Building	Contents	Changes Needed
#1	Well #4 - 181 CR 257 A, Utopia, Uvalde Co., TX 78884			
1	ICM Pump House/Fixed Equipment	\$30,000	INCL	
2	86,000 Gallon Storage Tank	\$175,000		
3	950 Gallon Pressure Tank	\$3,000		
4	2,500 Gallon Pressure Tank	\$15,000		
5	Fence	\$8,000		
6	Concrete Block/Metal Bldg/Chlor./Contents	\$96,000		
7	20 HP Sub Well Pump/Motor/Elec./Switch Gear	\$37,000		
8	Fence	\$6,600		
9				
10				
11				
12				
13				
14				
15				
#2	Well #3 Utopia City Park - 71 Ytopia Park Rd, Utopia, Uvalde Co., TX 78884			
1	HT Control & Chlorination Bldg/Fixed Equip.	\$60,000	INCL	
2	Filter Tank	\$45,000		
3	64,000 Gallon Storage Tank	\$100,000		
4	Well Discharge Piping (Well #1 & #2)	\$10,000		
5	Well Discharge Piping (Well #1 & #2)	\$10,000		
6	2 - 5 HP High Service Vertical Turbine Pumps	\$16,000		
7	2 - 15HP High Service Vert. Turbine Pumps	\$28,000		
8	10 HP Backwash Vertical Turbine Pump	\$12,000		
9	Fence	\$9,000		
10	10 HP Backwash Vertical Turbine Pump/ Motor Starter Panel	\$35,000		
11	Well Discharge/Yard Piping (Well #3)	\$30,000		
12	Atmospheric Filter on Clearwell	\$4,000		
13				
14				
15				