



Control Number: 52299



Item Number: 331

MAYOR  
*Margo Goodwin*  
--  
MAYOR PRO TEM  
*David Dowler*  
--  
TOWN COUNCIL MEMBERS  
*Jimmy Grisham*  
*Marc Myers*  
*Lydia Novakov*  
*Craig Penfold*  
--  
TOWN ATTORNEY  
*Matthew C G Boyle*  
--  
TOWN JUDGE  
*Albert D. Hammack*  
--  
LOCAL HEALTH AUTHORITY  
*Michael L. McCullough, M.D.*

THE TOWN OF  
*Highland Park*  
TEXAS

4700 DREXEL DRIVE, HIGHLAND PARK, TEXAS 75205  
Telephone 214-521-4161

TOWN ADMINISTRATOR  
*Bill Lindley*  
--  
DIRECTOR OF PUBLIC SAFETY  
*Paul Sandman*  
--  
DIRECTOR OF ADMINISTRATIVE SERVICES  
&  
CHIEF FINANCIAL OFFICER  
*Steven J. Alexander, CPA*  
--  
DIRECTOR OF DEVELOPMENT SERVICES  
*Hugh Pender, CBO*  
--  
DIRECTOR OF ENGINEERING  
*Lori Chapin, P E*  
--  
TOWN SECRETARY  
*Joanna R Mekeal*

October 21, 2021

Public Utility Commission of Texas  
Central Records  
1701 N. Congress PO Box 13326  
Austin, TX 78711-3326

**Re:** *Project 52299 Senate Bill 3: Public Water/Sewer Utility Letter*

To whom it may concern:

See enclosed information fulfilling the November 1, 2021 letter submittal requirement as part of Texas Senate Bill 3.

**Name of Water/Sewer Utility:** Town of Highland Park Water and Sanitary Sewer Systems

**PWSID:** TX0570049

**Critical Load Status Facilities:** the water system facilities detailed below provide critical services (pressure maintenance and/or data communication and operations support) for the Town and are therefore considered to be critical load facilities. The Town does not own or operate any critical load facilities for its sanitary sewer system.

Meterhouse: The Meterhouse is located southeast of the intersection of Mockingbird Lane and Eastern Avenue at 5400 Eastern Avenue, Dallas, TX 75209. The Meterhouse facility includes a flow meter and associated instrumentation and an electrically actuated butterfly valve. All of the Town's water supply from its wholesaler, Dallas County Park Cities Municipal Utility District (DCPCMUD), enters the Town through the Meterhouse. Maintaining valve control and status communication at this facility are important for Town water system operations.

Gillon Pump Station: Gillon Pump Station is located northeast of Gillon Avenue between Abbott Avenue and the Katy Trail (behind 4800 – 4806 Abbott Avenue residences). The facility includes a 1.5-million-gallon ground storage tank and a pump station. The pump station has four pumps total and has a firm capacity of 3.2 million gallons per day. The Gillon Pump Station can be supplied by either the Town's typical water supplier, DCPCMUD, or by Dallas Water Utilities (DWU) who provides an alternate water supply to the Town in emergency scenarios or when

DCPCMUD is undergoing maintenance and does not supply water to the Town. This pump station is the Town's primary pumped pressure maintenance facility.

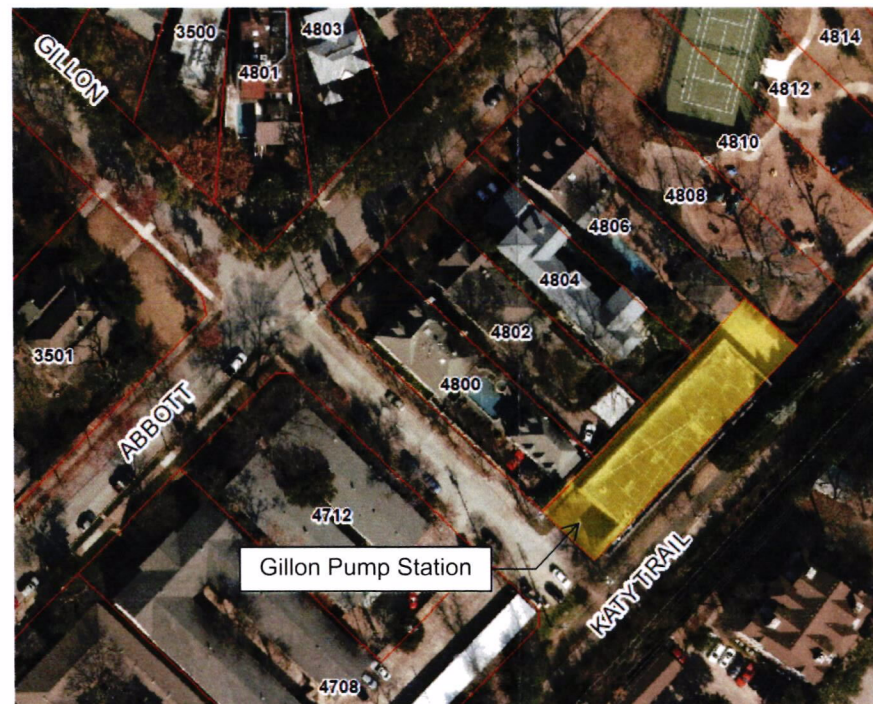
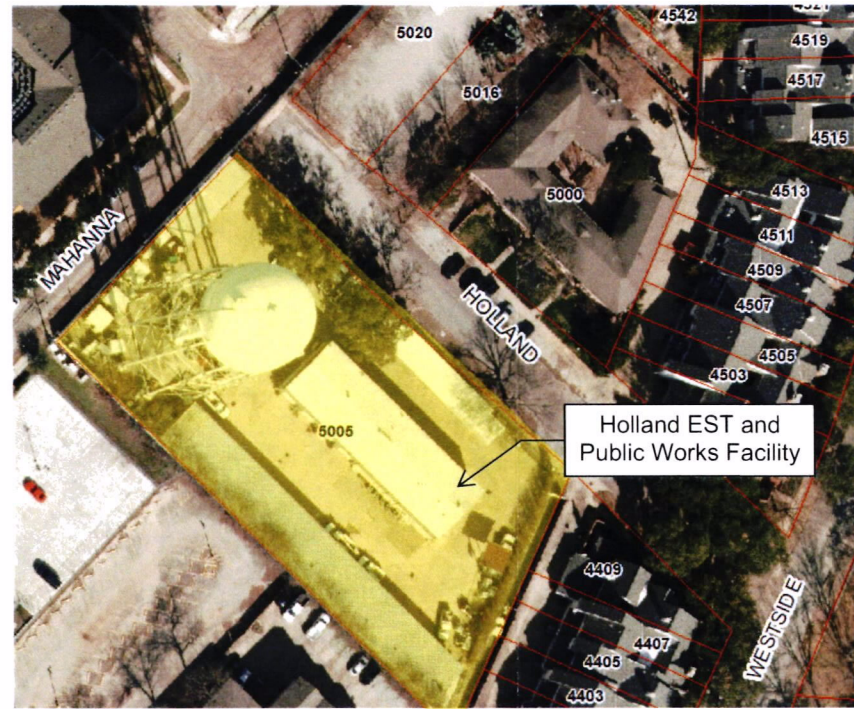
Willow Wood Pump Station: Willow Wood Pump Station is located east of Preston Road between 10 Willow Wood Court and 4700 Preston Road. The small pump station, located in a buried concrete vault, acts as an in-line booster with no accompanying storage facilities. It is supplied by an emergency interconnection with DWU. This pump station is used in conjunction with the Gillon PS during emergency or maintenance scenarios and helps to maintain water pressures in the central and western parts of Town during these scenarios.

Holland Elevated Storage Tank and Public Works Facility: The Holland Elevated Storage Tank (EST) and Publics Works Facility are located at the same site, 5005 Holland Avenue, Dallas TX 75205. The Holland EST is the Town's only EST and has an effective volume of 750,000 gallons. The EST has an electrically actuated butterfly valve at its base. The EST and site also house the Town Department of Public Safety communication antennas/equipment. The Public Works Facility is the headquarters for Public Works staff. This site is critical for water system pressure maintenance, as well as Public Works and Department of Public Safety operations and communication.

**Emergency Contact Information:**

|                                     |   |
|-------------------------------------|---|
| <b>Primary Point of Contact</b>     | Lori Chapin<br>214-663-1968   |
| <b>Alternative Point of Contact</b> | Heather Cerda<br>972-693-6661   |
| <b>Utility Mailing Address</b>      | Town of Highland Park<br>4700 Drexel Drive<br>Highland Park, TX 75205 |





Town of Highland Park  
Water System Critical Load Facilities

