



## Filing Receipt

**Received - 2021-10-21 09:42:56 AM**  
**Control Number - 52299**  
**ItemNumber - 251**



October 21, 2021

Re: Notification of Critical Facilities, Pursuant to Texas Water Code (TWC) § 13.1396

Dear Sir or Madam,

The Consolidated Water Supply Corporation is an “affected utility” as defined by TWC § 13.1394. We supply public drinking water under TCEQ PWS ID #1130031 *The Consolidated WSC Central System* and TCEQ PWS ID #1130033 *The Consolidated WSC Rural System*. Assumed names may include “Consolidated Water”, “Consolidated WSC”, or “Consolidated”.

Our mailing address is:

The Consolidated WSC  
PO Box 1226  
Crockett, TX 75835

You are receiving this notice because your entity meets one of the criteria below:

- 1) the PUCT,
- 2) an electric utility that provides transmission and distribution service (TDU) to our critical facilities,
- 3) a retail electric provider that provides electricity to our critical facilities,
- 4) an office of emergency management for a county where we have critical facilities, or
- 5) the division of emergency management of the governor.

We own and operate the critical facilities below, which may qualify for critical load status.

Name of Critical Facility	Facility Type	Address
Consolidated WSC Office	Administration/Dispatch	401 NE Loop 304, Crockett, TX 75835
Consolidated WSC Plant A	Water Plant	4174 FM 2663, Crockett, TX 75835
Consolidated WSC Plant B	Water Plant	163 CR 1855, Grapeland, TX 75844
Consolidated WSC Plant C	Water Plant	222 CR 1710, Grapeland, TX 75844
Consolidated WSC Plant D	Water Plant	4031 FM 3016, Grapeland, TX 75844
Consolidated WSC Plant E	Water Plant	19714 HWY 21 E, Grapeland, TX 75844
Consolidated WSC Plant F	Water Plant	6981 HWY 21 E, Crockett, TX 75835
Consolidated WSC Plant G Well	Water Plant	22892 FM 227 E, Kennard, TX 75847
Consolidated WSC Plant G	Water Plant	3547 CR 1135, Kennard, TX 75847
Consolidated WSC Plant H	Water Plant	4617 HWY 7 E, Crockett, TX 75835
Consolidated WSC Plant I	Water Plant	5428 FM 1272, Grapeland, TX 75844
Consolidated WSC Plant J	Water Plant	241 CR 4530, Crockett, TX 75835



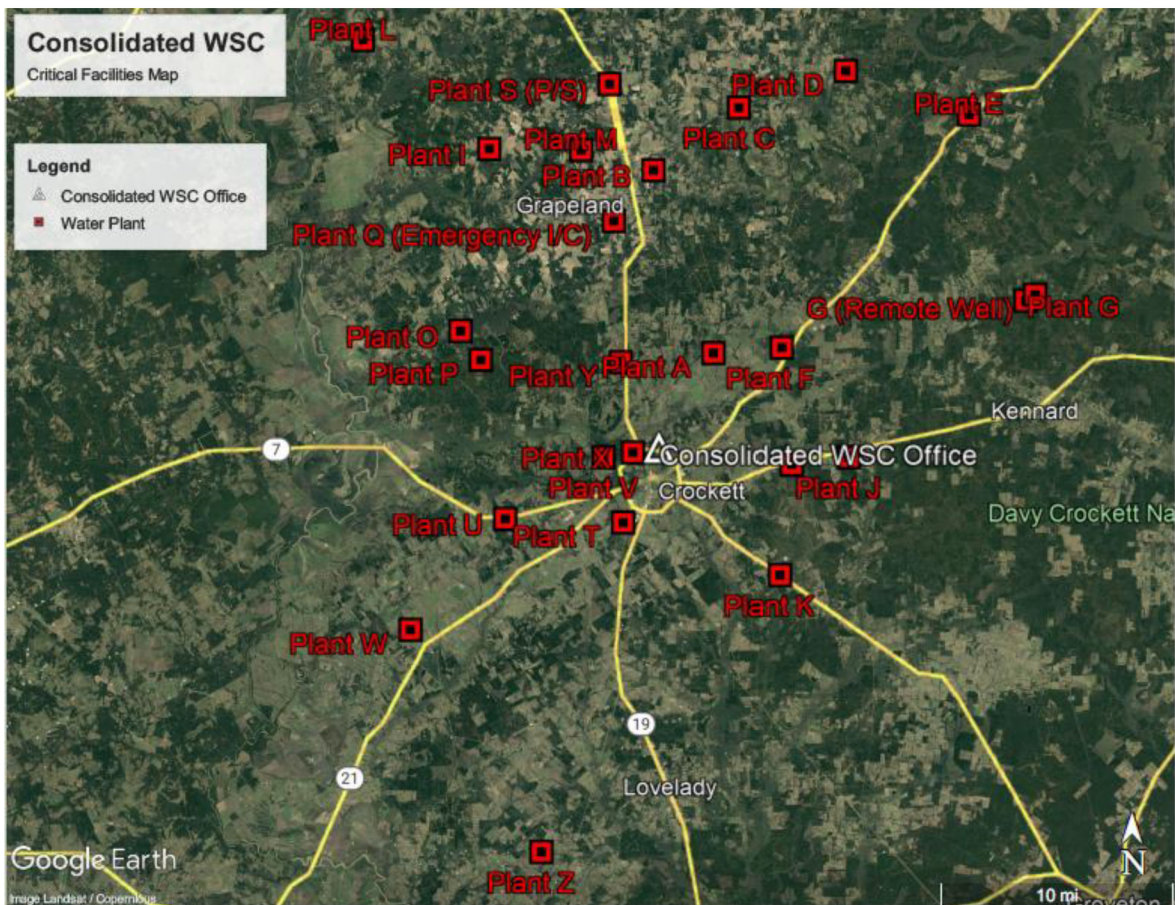
(936) 544-2986

general.manager@consolidatedwsc.com

www.consolidatedwsc.com

401 NE Loop 304, Crockett, TX 75835

Consolidated WSC Plant K	Water Plant	5800 US HWY 287S, Crockett, TX 75835
Consolidated WSC Plant L	Water Plant	13494 FM 322, Elkhart, TX 75839
Consolidated WSC Plant M	Water Plant	213 CR 2300, Grapeland, TX 75844
Consolidated WSC Plant O	Water Plant	477 Tram Rd., Crockett, TX 75835
Consolidated WSC Plant P	Water Plant	7556 FM 229, Crockett, TX 75835
Consolidated WSC Plant Q	Emergency Interconnect	8641 CR 2120, Grapeland, TX 75844
Consolidated WSC Plant S	Water Plant	176 CR 1890, Grapeland, TX 75844
Consolidated WSC Plant T	Water Plant	670 FM 2110, Crockett, TX 75835
Consolidated WSC Plant U	Water Plant	5213 HWY 7W, Crockett, TX 75835
Consolidated WSC Plant V	Water Plant	856 FM 229, Crockett, TX 75835
Consolidated WSC Plant W	Water Plant	1014 CR 3150, Crockett, TX 75835
Consolidated WSC Plant X	Water Plant	107 NW LOOP 304, Crockett, TX 75835
Consolidated WSC Plant Y	Water Plant	308 CR 2123, Crockett, TX 75835
Consolidated WSC Plant Z	Water Plant	110 CR 3465, Lovelady, TX 75851





(936) 544-2986

general.manager@consolidatedwsc.com

www.consolidatedwsc.com

401 NE Loop 304, Crockett, TX 75835

Emergency contacts are below.

	Name	Title	Phone Number(s)
POC 1	Amber Stelly	General Manager	936-544-2986 (office) 936-222-6891 (cell) 936-222-7578 (home)
POC Alt.	Kathy Oliver	Administrative Assistant	936-544-2986 (office)
POC Alt.	Adam Owens	Operations Superintendent/Operator	936-222-4729 (cell)

Sincerely,

A handwritten signature in black ink that reads "Amber Stelly". The signature is fluid and cursive, with the first and last names being clearly legible.

Amber Stelly  
General Manager