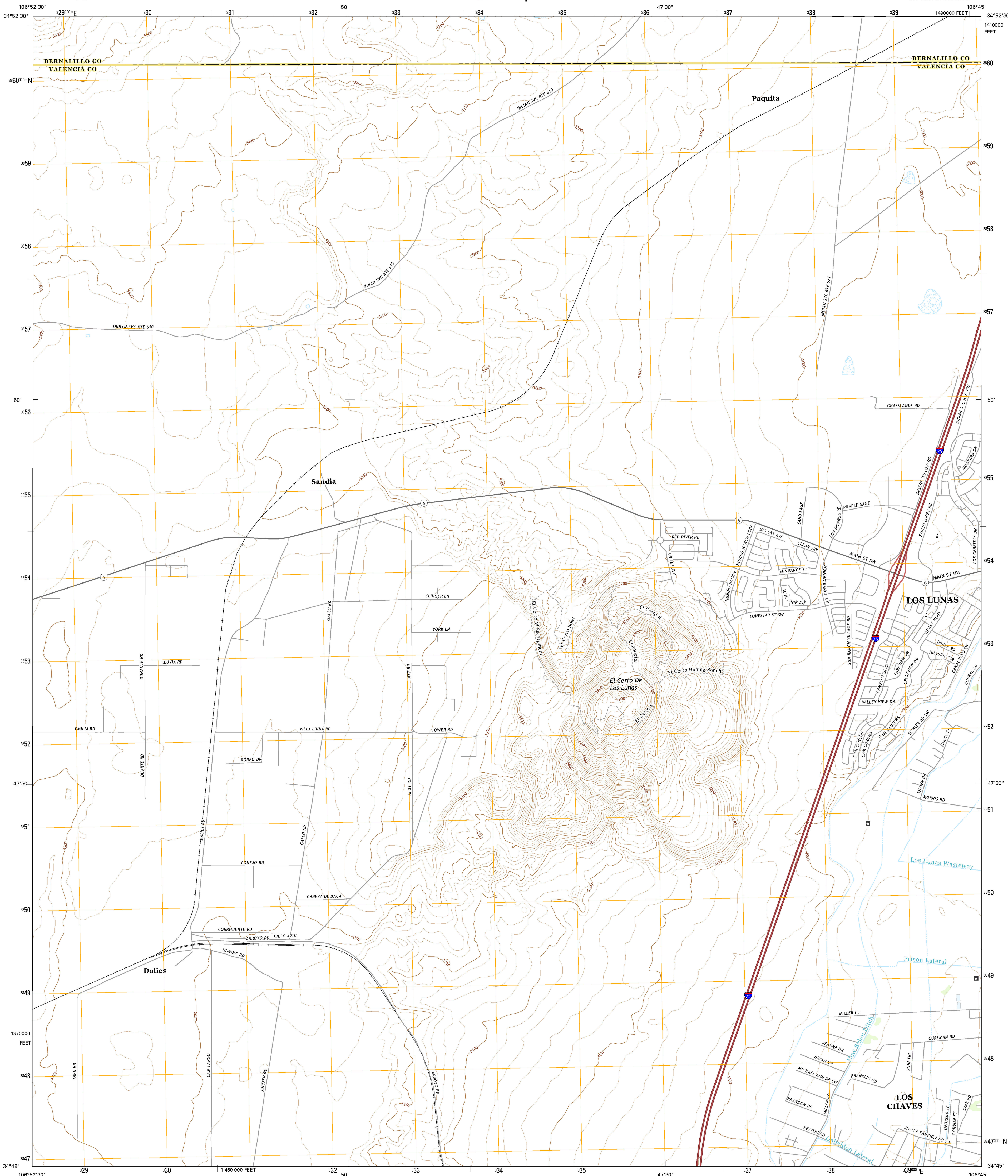




U.S. DEPARTMENT OF THE INTERIOR
U.S. GEOLOGICAL SURVEY

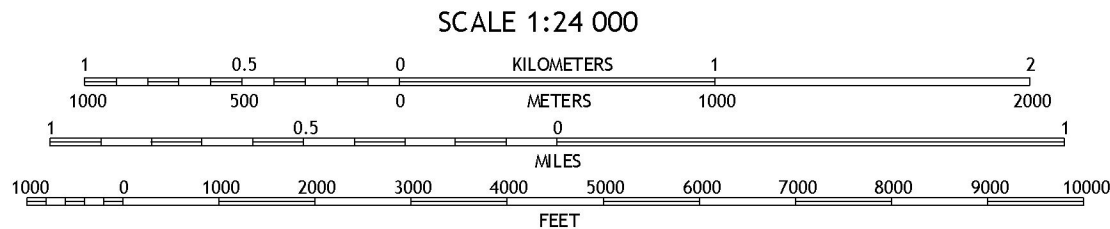
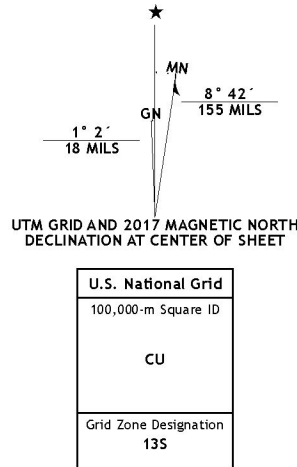


DALIES QUADRANGLE
NEW MEXICO
7.5-MINUTE SERIES



Produced by the United States Geological Survey
North American Datum of 1983 (NAD83)
World Geodetic System of 1984 (WGS84). Projection and
1000-meter grid: Universal Transverse Mercator, Zone 13S
10 000-foot ticks: New Mexico Coordinate System of 1983
(central zone)

This map is not a legal document. Boundaries may be
generalized for this map scale. Private lands within government
reservations may not be shown. Obtain permission before
entering private lands.
Imagery.....NAIP, September 2014
Roads.....U.S. Census Bureau, 2015 - 2016
Names.....National Hydrography Dataset, 2014
Hydrography.....National Elevation Dataset, 1999
Contours.....Multiple sources; see metadata file 1972 - 2016
Public Land Survey System.....BLM, 2016
Wetlands.....FWS National Wetlands Inventory 1977 - 2014

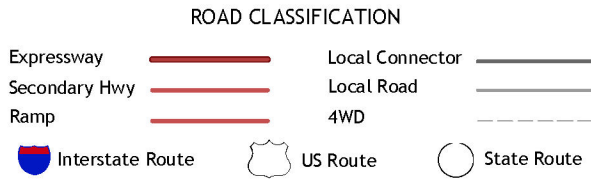


CONTOUR INTERVAL 20 FEET
NORTH AMERICAN VERTICAL DATUM OF 1988

This map was produced to conform with the
National Geospatial Program US Topo Product Standard, 2011.
A metadata file associated with this product is draft version 0.6.19



QUADRANGLE LOCATION



1	2	3
4	5	6
7	8	9

1 Dalies NW
2 Wind Mesa
3 Isleta
4 Rio Puerco
5 Los Lunas
6 Belen NW
7 Belen
8 Tome

DALIES, NM
2017

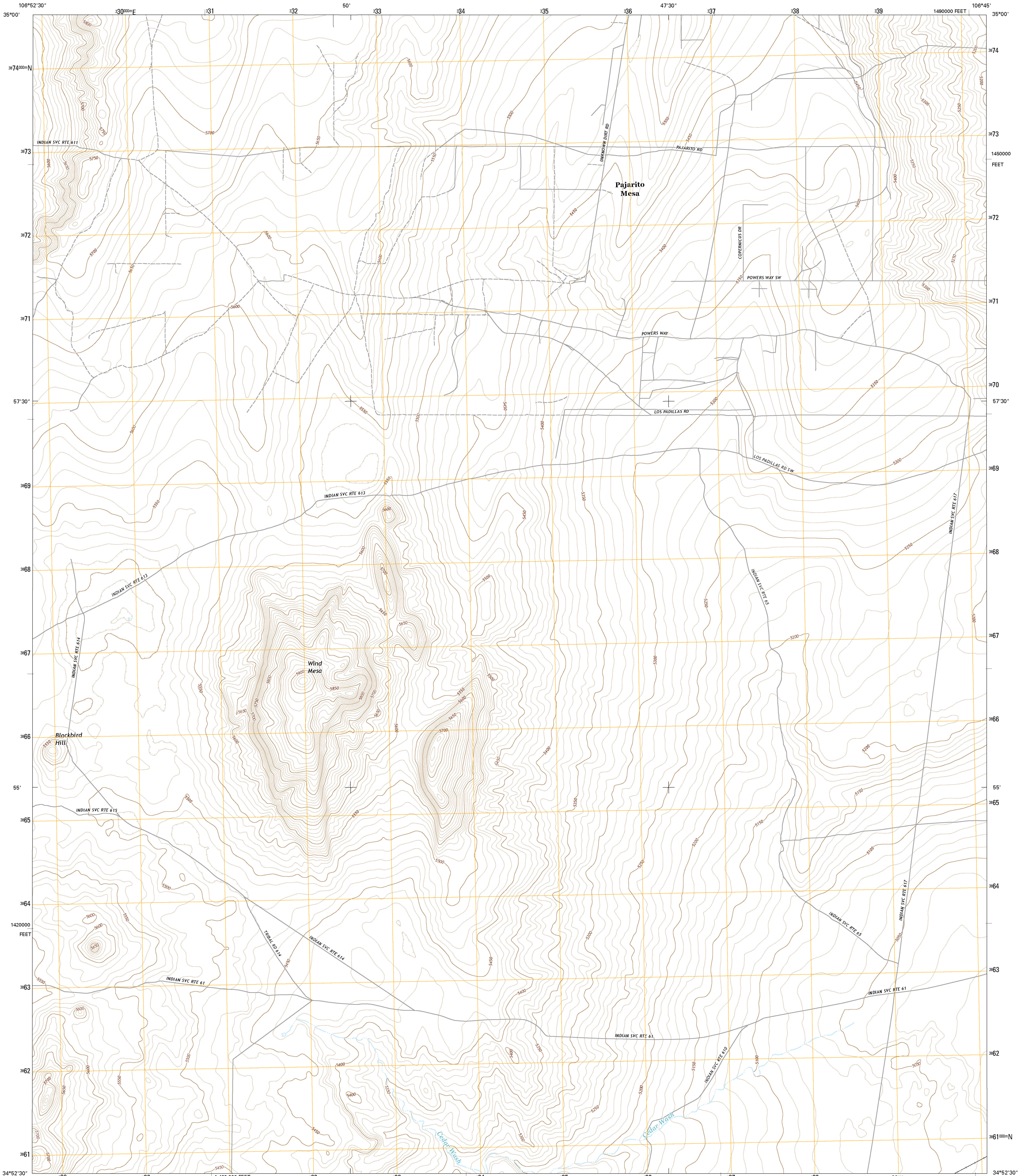




U.S. DEPARTMENT OF THE INTERIOR
U.S. GEOLOGICAL SURVEY



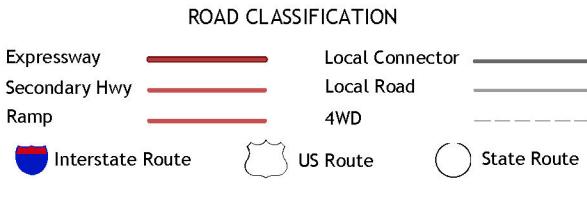
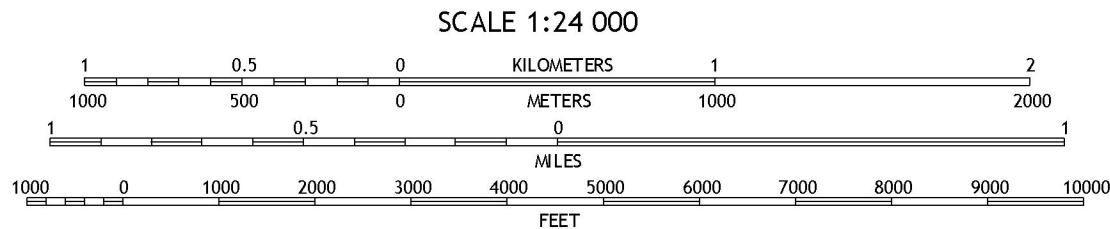
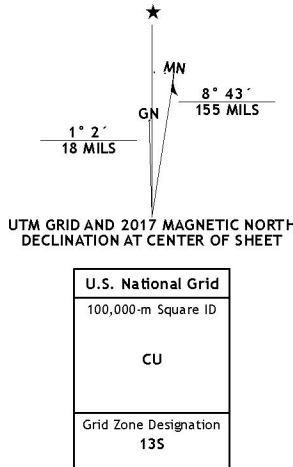
WIND MESA QUADRANGLE
NEW MEXICO-BERNALILLO CO.
7.5-MINUTE SERIES



Produced by the United States Geological Survey
North American Datum of 1983 (NAD83)
World Geodetic System of 1984 (WGS84). Projection and
1000-meter grid: Universal Transverse Mercator, Zone 13S
10 000-foot ticks: New Mexico Coordinate System of 1983
(central zone)

This map is not a legal document. Boundaries may be
generalized for this map scale. Private lands within government
reservations may not be shown. Obtain permission before
entering private lands.

Imagery.....NAIP, September 2014
Roads.....U.S. Census Bureau, 2015 - 2016
Names.....GNIS, 2016
Hydrography.....National Hydrography Dataset, 2014
Contours.....National Elevation Dataset, 1999
Boundaries.....Multiple sources; see metadata file 1972 - 2016
Public Land Survey System.....BLM, 2016
Wetlands.....FWS National Wetlands Inventory 1977 - 2014



1	2	3
4	5	6
7	8	9

1 La Mesa Negra
2 La Mesa Negra SE
3 Albuquerque West
4 Dalles NW
5 Jileta
6 Rio Puerto
7 Dalles
8 Los Lunas

WIND MESA, NM
2017





2/68

Albuquerque Office
5647 Jefferson Street NE
Albuquerque, New Mexico 87109
Tel 505.254.1115 Fax 505.254.1116
www.swca.com

Technical Memorandum

To: Jessica Christianson
El Paso Electric Company
P.O. Box 982
El Paso, Texas 79960

From: Ian Dolly and Jennifer Hyre, SWCA Environmental Consultants

Date: January 12, 2016

Re: **El Paso Electric 115-kV Transmission Line/ SWCA Project No.35934**

INTRODUCTION

SWCA Environmental Consultants (SWCA) was retained by El Paso Electric Company (EPEC) to complete a biological survey to assess potential impacts to natural resources throughout a section of an existing 115-kilovolt (kV) transmission line located on Pueblo of Isleta lands in Bernalillo and Valencia Counties, New Mexico (see Appendix A [Figure A.1])

SWCA conducted a 100 percent pedestrian survey of the transmission line right-of-way from November 17 to 19, 2015. This technical memorandum describes the results of the survey, including the following:

- A description of vegetation and wildlife observed;
- Location and photo documentation of potential jurisdictional waters of the U.S. within or adjacent to the transmission line right-of-way; and
- Determination of the potential presence of listed species and evaluation of the potential effects of the existing transmission line on federal and state threatened or endangered species listed under the Endangered Species Act of 1973 (ESA), as amended (16 United States Code [USC] 1531–1544 et seq.), State of New Mexico threatened or endangered species listed under the New Mexico Wildlife Conservation Act (17-2-41 New Mexico Statutes Annotated [NMSA] 1978), and the state's endangered plant species regulations (75-6-1 NMSA 1978).

PROJECT DESCRIPTION AND LOCATION

EPEC is in the process of renewing its 50-year right-of-way lease for an 8.43-mile-long segment of existing 115-kV transmission line traversing through Pueblo of Isleta lands in Bernalillo and Valencia Counties, New Mexico. The segment occurs on a parcel of land owned by the Pueblo of Isleta west of

Interstate 25 and approximately 22 miles southwest of Albuquerque, New Mexico, and is located on the Dalies (34106-G7) and Wind Mesa (34106-H7) U.S. Geological Survey 7.5-minute quadrangles.

METHODS

Prior to the biological survey, U.S. Geological Survey (USGS) topographic maps were reviewed to determine the location and elevation of the survey area. Soil types were evaluated using the Natural Resources Conservation Service (NRCS) Web Soil Survey mapper (NRCS 2015a). Wetland and drainage data were also evaluated using National Hydrography Dataset (USGS 2015) and National Wetland Inventory maps (U.S. Fish and Wildlife Service [USFWS] 2015a), as well as geographic information system (GIS) data. SWCA biologists reviewed the USFWS (2015b) Information for Planning and Conservation (IPaC) System, the New Mexico Department of Game and Fish (NMDGF) Biota Information System of New Mexico (BISON-M 2015), the New Mexico Rare Plants website (New Mexico Rare Plant Technical Council 1999), and the New Mexico Energy, Minerals, and Natural Resources Department (EMNRD) state endangered plant species list (EMNRD 2015) for the survey area.

SWCA biologists Ian Dolly, Ariel Peraglio, Thomas Staudt, and Joanna Franks conducted the survey from November 17 to 19, 2015. During the biological surveys, a 200-foot-wide survey buffer was used for the project area. The pedestrian surveys of the project area involved two SWCA biologists per day walking side by side, with spacing necessary to adequately observe and assess general vegetation and habitat suitability for USFWS and State of New Mexico protected native plants and special status species. Maps and shapefiles provided by EPEC were used for general orientation and to locate the proposed project boundaries.

During the biological surveys, SWCA also investigated the presence of potential waters of the U.S. and special aquatic sites, including wetlands. Potential waters of the U.S. were identified by the presence of an ordinary high water mark (OHWM), defined bed and bank, or the three mandatory U.S. Army Corps of Engineers (USACE) wetland criteria: hydrophytic vegetation, hydric soils, and wetland hydrology. The presence/absence of wetlands was identified in the field using routine on-site delineation methods according to the *Corps of Engineers Wetlands Delineation Manual* (USACE 1987) and the *Regional Supplement to the Corps of Engineers Wetland Delineation Manual: Arid West Region* (USACE 2008a). Determination of wetland habitat type was based on the classification system developed by Cowardin et al. (1979). Other sources used to identify the presence/absence of wetlands include the *Pocket Guide to Hydric Soil Field Indicators, Version 7.0* (Wetland Training Institute, Inc. 2013). The presence/absence of lotic systems (e.g., creeks, rivers, arroyos, human-made ditches; collectively streams) were identified in the field using the methods outlined in the *Field Guide to the Identification of the Ordinary High Water Mark (OHWM) in the Arid West Region of the Western United States: A Delineation Manual* (USACE 2008b).

RESULTS

General Characteristics

The average elevation of the survey area ranges from 5,228 to 5,480 feet above mean sea level (amsl). Climate data for the survey area was obtained from records for Los Lunas, New Mexico (Station No. 295147 in Valencia County, which is located approximately 9.2 miles south of the Pueblo of Isleta on Interstate 25). The area has an average annual maximum temperature of 71.8 degrees Fahrenheit (°F), with an average annual minimum temperature of 37.1°F. The average annual precipitation is 8.0 inches with the majority occurring between July and September, while the average annual total snowfall is 6.4 inches, which largely occurs between December and February (Western Regional Climate Center 2015). A summary of the weather data during the survey is provided in Table 1.

Table 1. Weather during the Biological Survey

Date	Temperature (°F)	Weather Description
November 17, 2015	40–50	Partly cloudy, windy
November 18, 2015	40–60	Sunny, breezy
November 19, 2015	60–70	Sunny, calm

The survey area is largely open, undeveloped land with the exception of the existing 115-kV transmission line and associated service road. Several two-track roads, a cellular tower, a livestock corral, and a stock tank are located in the surrounding area.

Soils

The NRCS (2015a) identifies 11 mapped soil types within the survey area (Table 2). None of these soil types meet the criteria for hydric soils. The three dominant soils found in the survey area are characterized as being well drained, deep, and moderately permeable. These soils are not classified as prime or important farmland.

Table 2. Soils in the Project Area

Map Unit Symbol	Soil Type Name	Acres	Percent of Project Area
PbB	Pajarito fine sandy loam	20 40	19 96%
WU	Wink-Madurez association	16 49	16 14%
MWA	Madurez-Wink association, gently sloping	13 19	12 90%
BCC	Bluepoint loamy fine sand, 1 to 9 slopes	15 63	15 29%
Bb	Bluepoint fine sand, hummocky	12 69	12 42%
KOE	Kokan gravelly sand, 10 to 40 percent slopes	7 37	7 21%
BO	Bluepoint loamy fine sand, 1 to 9 percent slopes	4 90	4 80%
BK	Bluepoint loamy sand, hilly	4 46	4 37%
PAC	Pajarito loamy fine sand, 1 to 9 slopes	4 04	3 96%
AR	Akela-Rock outcrop complex, 1 to 9 slopes	2 73	2 67%
BKD	Bluepoint-Kokan association, hilly	0 31	0 30%

Source: NRCS (2015a).

Vegetation

The survey area is located within the Arizona/New Mexico Plateau: Albuquerque Basin U.S. Environmental Protection Agency Level IV ecoregion (Griffith et al. 2006). The Arizona/New Mexico Plateau represents a sizeable transitional region between drier shrublands and wooded higher relief tablelands of the Colorado Plateaus in the north; the lower, hotter, less vegetated Mojave Basin and Range in the west; and the forested mountain regions of the northeast and south. Vegetation of this ecoregion is generally composed of a mix of sand scrub and desert grassland habitats and topography is characterized by plains with alluvial fans and scattered hills (Griffith et al. 2006). One vegetation community, plains grassland, was identified within the survey area and is described below.

- **Plains grassland:** This vegetation community is found throughout the survey area. The community is characteristic of a grassland with blue grama (*Bouteloua gracilis*) and/or other grammas (*B. hirsuta*, *B. chondrosioides*, *B. eriopoda*, *B. curtipendula*). Other important grasses, either locally or generally, include buffalo grass (*Buchloe dactyloides*), Indian ricegrass (*Oryzopsis hymenoides*), and alkali sacaton (*Sporobolus airoides*). Shrubs such as fourwing saltbush (*Atriplex canescens*), sagebrush (*Artemisia* sp.), winterfat (*Krascheninnikovia lanata*), cholla (*Opuntia* sp.), soapweed yucca (*Yucca glauca*), rabbitbrush (*Chrysothamnus* sp.), and

snakeweed (*Gutierrezia* sp.) may be scattered throughout, or, because of grazing and/or soils, be noticeably conspicuous (Brown 1994).

Photographs representative of the vegetation community taken throughout the survey area are provided in Appendix B. Plant species recorded during the biological survey are listed in Table 3.

No noxious weeds listed by the State of New Mexico or U.S. Department of Agriculture were identified within the survey area (New Mexico Department of Agriculture 2009; U.S. Department of Agriculture 2015).

Table 3. Plant Species Observed during the Biological Survey

Common Name	Scientific Name
Western ragweed	<i>Ambrosia psilostachya</i>
Purple threeawn	<i>Aristida purpurea</i>
Sand sagebrush	<i>Artemisia filifolia</i>
Fourwing saltbush	<i>Atriplex canescens</i>
Silver bluestem	<i>Bothrichloa saccharoides</i>
Walking stick cactus	<i>Cylindropuntia spinosior</i>
Broom pea	<i>Dalea scoparia</i>
Fluffgrass	<i>Dasyochloa pulchella</i>
Mormon tea	<i>Ephedra viridis</i>
Rubber rabbitbrush	<i>Ericameria nauseosa</i>
Wild buckwheat	<i>Eriogonum</i> sp
Spinystar cactus	<i>Escobaria vivipara</i>
Devil's cholla	<i>Grusonia kunzei</i>
Broom snakeweed	<i>Gutierrezia sarothrae</i>
Kochia	<i>Kochia scoparia</i>
Winterfat	<i>Krascheninnikovia lanata</i>
Creosote bush	<i>Larrea tridentata</i>
Pale wolfberry	<i>Lycium pallidum</i>
Manyflowered mentzelia	<i>Mentzelia multiflora</i>
Plains pricklypear	<i>Opuntia polyacantha</i>
Indian ricegrass	<i>Oryzopsis hymenoides</i>
Devil's claw	<i>Proboscidea parviflora</i>
Dock	<i>Rumex</i> sp
Russian thistle	<i>Salsola kali</i>
Silverleaf nightshade	<i>Solanum elaeagnifolium</i>
Scarlet globemallow	<i>Sphaeralcea coccinea</i>
Sand dropseed	<i>Sporobolus cryptandrus</i>
Plains yucca	<i>Yucca glauca</i>

Note Nomenclature follows the PLANTS Database (NRCS 2015b)

Wildlife

The Albuquerque Basin ecoregion (Griffith et al. 2006) provides habitat for a variety of wildlife species. SWCA biologists detected 14 bird species, five mammal species, and one reptile species during the biological survey (Table 4). The means of detection for each species is noted in the table below. A few small- to medium-sized burrows were also observed (see Figure A.2 and Photograph B.6).

Table 4. Wildlife Detected during the Biological Survey

Common Name	Scientific Name
Birds	
Western meadowlark ¹	<i>Sturnella neglecta</i>
Horned lark ¹	<i>Eremophila alpestris</i>
Red-tailed hawk ¹	<i>Buteo jamaicensis</i>
Sagebrush sparrow ¹	<i>Artemisiospiza nevadensis</i>
Common raven ¹	<i>Corvus corax</i>
American kestrel ¹	<i>Falco sparverius</i>
Loggerhead shrike ¹	<i>Lanius ludovicianus</i>
Scaled quail ¹	<i>Callipepla squamata</i>
Canyon towhee ¹	<i>Pipilo fuscus</i>
Northern mockingbird ¹	<i>Mimus polyglottos</i>
Bewick's wren ¹	<i>Thryomanes bewickii</i>
Rock wren ¹	<i>Salpinctes obsoletus</i>
Sandhill crane ¹	<i>Grus canadensis</i>
Northern harrier ¹	<i>Circus cyaneus</i>
Mammals	
Domestic cattle	<i>Bos taurus</i>
North American porcupine ¹	<i>Erethizon dorsatum</i>
Black-tailed jackrabbit ¹	<i>Lepus californicus</i>
Coyote ³	<i>Canis latrans</i>
White-throated woodrat ²	<i>Neotoma albigula</i>
Reptiles	
Side-blotched lizard ¹	<i>Uta sp</i>

Note ¹ Direct observation (visual/aural), ² mounds and/or nests, ³ tracks and/or scats

Migratory Bird Treaty Act

The Migratory Bird Treaty Act (MBTA) provides federal protection to most bird species, as well as their nests and eggs. EPEC is in the process of updating its avian protection plan that outlines its procedures for complying with the MBTA. The avian protection plan has been developed to identify and minimize injuries or fatalities to raptors and migratory birds. The plan provides a special purpose permit for temporarily possessing carcasses and injured birds. It does not, however, allow the removal or disturbance of active nests unless such nests pose an imminent threat to human health, safety, property, or inability to maintain the line in an emergency situation.

During the survey, 14 bird species were observed or identified by call (see Table 4). Three inactive passerine nests were identified within the survey area. Two nests were found in separate oneseed juniper (*Juniperus monosperma*) trees, and the other nest was located on one the transmission towers. The nests are depicted on Figure A.2 in Appendix A. Suitable nesting habitat for grassland and shrubland nesting migratory birds is present throughout the survey area. The existing transmission line and towers also provide perching habitat for multiple avian species. Vegetation treatments to control the growth of woody species along the right-of-way are conducted as needed based on the rate of encroachment and EPEC's vertical clearance requirements. These treatments consist of selective, mechanical removal.

Potential for impacts to migratory birds would vary depending on timing of maintenance activities relative to the migratory bird breeding season (March–August); however EPEC has established procedures for conducting nesting bird surveys prior to performing vegetation management and other maintenance activities.

Bald and Golden Eagle Protection Act

Bald eagles (*Haliaeetus leucocephalus*) and golden eagles (*Aquila chrysaetos*) are protected under the MBTA and the Bald and Golden Eagle Protection Act. Bald eagles are found typically in association with water and nest and breed from October to July throughout the state. Bald eagles prey on fish, but also on mammals, especially prairie dogs (*Cynomys* sp.). Bald eagles are known to winter nearby along the Rio Grande, which is approximately 5 miles east of the existing transmission line (Zwank 1996).

Golden eagles nest primarily on rock ledges or cliffs and occasionally in large trees or on transmission towers at elevations ranging from 4,000 to 10,000 feet amsl. Golden eagles occur in nearly all habitats from desert grasslands to timberline, but tend to prefer mountainous regions during breeding and open woodland and prairies during the winter (New Mexico Avian Protection Working Group 2005). Both bald and golden eagles are carnivores. Golden eagles feed mainly on small mammals, as well as invertebrates, carrion, and other wildlife (BISON-M 2015; Stahlecker and Walker 2010).

No bald or golden eagles were observed during the biological survey. Refer to the Special Status Species section below for additional analysis of potential project effects on bald eagles. Golden eagles could occur in the survey area, especially outside the breeding season, when they can perch on the transmission towers far from cliffs and other rugged terrain. The proposed project is not anticipated to cause take of individual bald or golden eagles, their nests, or eggs.

Wetlands and Waterways

The survey area is located in the Cedar Wash Watershed (Hydrologic Unit Code 130202030602) and the Cañon Monte Largo-Rio Grande Watershed (Hydrologic Unit Code 1302020306).

No wetlands were identified during the survey; 19 ephemeral drainages were identified within the survey area (see Figure A.3–Figure A.5 in Appendix A). The transmission line currently spans across all drainages. One human-made stock tank is located directly east of the access road and will not hinder EPEC staff during regular maintenance activities (see Photograph B.8. in Appendix B).

Special Status Species

Special status species evaluated in this technical memorandum consisted of 1) federally protected (endangered and threatened) species, 2) additional species listed by the USFWS as candidate or proposed species, and 3) state-listed endangered and threatened species. Table 5 describes the special status species with the potential to occur in Bernalillo and Valencia Counties, their habitat, and potential for occurrence in the survey area.

The potential for local species occurrence was based on 1) existing information on distribution and 2) qualitative comparisons of the habitat requirements of each species with vegetation communities, landscape features, and/or water quality conditions in the project area. Possible impacts to these species were evaluated based on reasonably foreseeable project-related activities and the local loss of habitat.

The potential for occurrence of a species was identified using the following categories:

- *Known to occur*—the species was documented in the proposed survey area either during or prior to the biological surveys by a reliable observer.
- *May occur*—the proposed survey area is within the species' currently known range, and vegetation communities, soils, water quality conditions, etc., resemble those known to be used by the species.

- *Unlikely to occur*—the proposed survey area is within the species' currently known range, but vegetation communities, soils, water quality conditions, etc., do not resemble those known to be used by the species, or the proposed survey area is clearly outside the species' currently known range.

There are 20 special status species listed for Bernalillo and Valencia Counties (Table 5). Based on their current distribution and habitat requirements, the following species have the potential to occur in the project area: Baird's sparrow (*Ammodramus bairdi*), Sprague's pipit (*Anthus spraguei*), and bald eagle. There is no USFWS designated species critical habitat within or immediately adjacent to the survey area (USFWS 2015b, 2015c).

Table 5. Special Status Species for Bernalillo and Valencia Counties, New Mexico

Common Name (Species Name)	Status ¹	Range or Habitat Requirements	Potential for Occurrence in Survey Area
Birds			
Baird's sparrow (<i>Ammodramus bairdii</i>)	NM State T	This species is a winter resident in New Mexico. It has been found on Otero Mesa and in the Animas Valley and may occur in other areas of suitable winter habitat, particularly in the southeast portion of the state. Generally prefers dense, extensive grasslands with few shrubs. Avoids heavily grazed areas.	May occur in the survey area due to presence of dry grassland habitat, however, the survey area is outside the sparrow's typical winter range.
Bald eagle (<i>Haliaeetus leucocephalus alascanus</i>)	NM State T	Occurs in New Mexico year-round. Breeding is restricted to a few areas mainly in the northern part of the state along or near lakes. In migration and during winter months the species is found chiefly along or near rivers and streams and in grasslands associated with large prairie dog colonies. Typically perches in trees.	May occur, wintering habitat is present nearby along the Rio Grande.
Bell's vireo (<i>Vireo bellii</i>)	NM State T	In New Mexico, Bell's vireo occurs in the southern third of the state during the breeding season. In New Mexico this species characteristically occurs in dense shrubland or woodland along lowland stream courses, with willows (<i>Salix</i> sp.), mesquite (<i>Prosopis</i> sp.), and seepwillows (<i>Baccharis glutinosa</i>). Its distribution during breeding is typically limited to riparian habitats.	Unlikely to occur in the survey area due to lack of dense vegetation and water.
Broad-billed hummingbird (<i>Cynanthus latirostris magicus</i>)	NM State T	Occurs in riparian habitat or dense mesquite. Occurs in Guadalupe Canyon in Hidalgo County, and rarely found in the Peloncillo Mountains.	Unlikely to occur in the survey area due to the lack of riparian forest and dense mesquite.
Brown pelican (<i>Pelecanus occidentalis carolinensis</i>)	NM State E	Occurs usually in marine habitats and feeds almost exclusively on fish. Associated with water.	Unlikely to occur in the survey area due to lack of perennial water bodies.
Common ground-dove (<i>Columbina passerina pallescens</i>)	NM State E	Associated with shrubby riparian habitat or riparian woodland edges. Also occurs in desert scrub dominated by mesquite and pricklypear. Feeds exclusively on the ground, in sparsely vegetated areas.	Unlikely to occur in the survey area due to lack of riparian habitat.
Common black-hawk (<i>Buteogallus anthracinus</i>)	NM State T	Occurs in New Mexico almost exclusively during the breeding season and in migration. Breeding populations known chiefly from the Gila River valley in the southwestern portion of the state and from along the Mimbres River and the Rio Hondo watershed. Strongly tied to cottonwood (<i>Populus</i> sp.) gallery forests.	Unlikely to occur in the survey area due to lack of riparian forest.
Gray vireo (<i>Vireo vicinior</i>)	NM State T	Strongly associated with piñon-juniper and scrub oak habitats. Distributed mainly across the western two-thirds of the state. Prefers gently sloped canyons, rock outcrops, ridge tops, and moderate scrub cover.	Unlikely to occur in the survey area due to lack of piñon-juniper and scrub oak habitats.
Mexican spotted owl (<i>Strix occidentalis lucida</i>)	USFWS T w/ CH	Occupies mountainous areas and deep canyons incised within flat plateaus. Habitat consists typically of mixed-conifer, ponderosa pine (<i>Pinus ponderosa</i>), or ponderosa pine/Gambel oak (<i>Quercus gambelii</i>) forest. Prefers mesic, shaded environments such as canyon bottoms and mountainous riparian areas.	Unlikely to occur in the survey area due to lack of mixed-conifer, ponderosa pine, and ponderosa pine/Gambel oak forest.
Neotropic cormorant (<i>Phalacrocorax brasilianus</i>)	NM State T	Associated with wetlands. Key requirements include areas of deep water for diving and elevated perches in trees, shrubs, and other structures for nesting, roosting, and drying plumage after feeding.	Unlikely to occur in the survey area due to lack of wetlands.

Common Name (Species Name)	Status ¹	Range or Habitat Requirements	Potential for Occurrence in Survey Area
Northern aplomado falcon (<i>Falco femoralis septentrionalis</i>)	USFWS ENEP NM State E	Associated with semi-desert grasslands with scattered yuccas, mesquite, and cacti. Naturally occurring populations are essentially restricted to the southern tier of New Mexico.	Unlikely to occur. The survey area is outside the species' occupied range.
Peregrine falcon (<i>Falco peregrinus</i> ; <i>F. p. tundrus</i>)	NM State T	Found in New Mexico year-round. All nests in New Mexico are found on cliffs. In migration and during winter months New Mexico's peregrine falcons are typically associated with water and large wetlands.	Unlikely to occur in survey area due to the lack of water, large wetlands, and cliffs.
Southwestern willow flycatcher (<i>Empidonax traillii extimus</i>)	USFWS E w/ CH NM State E	In New Mexico, this species is known to breed only along the Gila River and Rio Grande. Associated with moist riparian areas throughout the year. Breeding habitat requirements vary by region. In migration, may be associated with willows along ditches, cottonwood woodlands, and saltcedar (<i>Tamarix</i> sp.) stands.	Unlikely to occur in the survey area due to lack of riparian habitat.
Sprague's pipit (<i>Anthus spraguei</i>)	USFWS C	Occurs in New Mexico only as a sporadic winter resident. Its distribution in the state is not well known, but includes the lower Pecos River valley, Otero Mesa, and the Animas Valley. Species as a whole prefers dry, open grasslands.	May occur. The survey area does harbor some grassland habitat, however, it is outside the species' typical winter range.
White-eared hummingbird (<i>Hylocharis leucotis</i>)	NM State T	Irregular summer visitor to extreme southeastern Arizona, rare in New Mexico and Texas. Found in mountain woodlands in the southwestern corner of the state in the Animas and Peloncillo (less regularly) Mountains. Extremely rare and irregular elsewhere in western New Mexico.	Unlikely occur. The survey area is far outside the known distribution of the species.
Yellow-billed cuckoo (<i>Coccyzus americanus</i>)	USFWS T w/ proposed CH	Breeds and migrates through in riparian habitat and associated drainages, springs, developed wells, and earthen ponds supporting mesic vegetation, deciduous woodlands with cottonwoods and willows, dense understory foliage is important for nest site selection. Nests in willow, mesquite, cottonwood, and hackberry (<i>Celtis</i> sp.), forages in similar riparian woodlands.	Unlikely to occur in the survey area. The survey area does not contain required riparian habitat vegetation of deciduous woodlands with cottonwoods and willows.
Plants			
Pecos sunflower (<i>Helianthus paradoxus</i>)	USFWS T w/ CH	A wetland plant that can be found on wet, alkaline soils at spring seeps, wet meadows, stream courses, and pond margins. The species has seven populations in west-central New Mexico and Trans-Pecos Texas, all of which are dependent on wetlands from natural groundwater deposits (USFWS 2005).	Unlikely to occur due to lack of wetland habitat in the survey area.
Mammals			
New Mexico meadow jumping mouse (<i>Zapus hudsonius luteus</i>)	USFWS E w/ proposed CH NM State E	The New Mexico meadow jumping mouse is endemic to New Mexico, Arizona, and a small area of southern Colorado (Hafner et al. 1981:501–502, BISON-M 2015). The mouse appears to only utilize two riparian community types: 1) persistent emergent herbaceous wetlands (i.e., beaked sedge [<i>Carex rostrata</i>] and reed canarygrass [<i>Phalaris arundinacea</i>] alliances) and 2) scrub-shrub wetlands (i.e., riparian areas along perennial streams that are composed of willows and alders) (Frey 2005:53).	Unlikely to occur in the survey area due to lack of suitable riparian habitat.

Common Name (Species Name)	Status ¹	Range or Habitat Requirements	Potential for Occurrence in Survey Area
Spotted bat (<i>Euderma maculatum</i>)	NM State T	In New Mexico, spotted bats have been taken in areas near cliffs, including piñon-juniper woodlands and from streams or water holes within ponderosa pine or mixed coniferous forest. The spotted bat is usually captured around a water source including desert pools or cattle tanks. It also may use rivers or desert washes as travel corridors.	A stock tank is present adjacent to the survey area. Species may forage in the vicinity, however, no cliffs, piñon-juniper woodlands, and ponderosa pine or mixed coniferous forests are present in the survey area.
Fish			
Rio Grande silvery minnow (<i>Hybognathus amarus</i>)	USFWS E w/ CH NM State E	The Rio Grande silvery minnow is an endemic species of the Rio Grande drainage, ranging from New Mexico to Tamaulipas, Mexico. It occupies a variety of habitats in low-gradient, perennial waters with shifting sand or silty bottoms.	Unlikely to occur, the survey area is outside the species' known range. Also, no perennial waterways exist within the survey area.

¹Federal (USFWS) status definitions

E = Endangered. Any species considered by the USFWS as being in danger of extinction throughout all or a significant portion of its range. The ESA specifically prohibits the take of a species listed as endangered. Take is defined by the ESA as to harass, harm, pursue, hunt, shoot, wound, kill, trap, capture, or collect, or to engage in any such conduct.

T = Threatened. Any species that is likely to become an endangered species within the foreseeable future throughout all or a significant portion of its range. The ESA specifically prohibits the take (see definition above) of a species listed as threatened.

C = Candidate. Any species (taxon) for which the USFWS has sufficient information to propose that it be added to the list of endangered and threatened species, but the listing action has been precluded by other, higher priority listing activities.

ENEP = Experimental, Non-essential Population. Any reintroduced population established outside the species' current range, but within its historical distribution. For purposes of Section 7 consultation, experimental, non-essential populations are treated as proposed species (species proposed in the Federal Register for listing under Section 4 of the ESA), except on national wildlife refuges and national parks, where they are treated instead as threatened.

w/ CH = with Critical Habitat. Critical habitat corresponds to specific areas within the geographical area occupied by the species at the time of listing or historically with physical or biological features essential to the species' conservation and requiring special management considerations or protection.

NM State status definitions

E = Endangered. Any species that is considered by the State of New Mexico (NMDGF for wildlife, Forestry and Resources Conservation Division for plants) as being in jeopardy of extinction or extirpation from the state.

T = Threatened. Any species that, in the view of the State of New Mexico, is likely to become endangered within the foreseeable future throughout all or a significant portion of its range in New Mexico.

Except where otherwise noted, range or habitat information for wildlife species is taken from the BISON-M website (BISON-M 2015), the USFWS IPaC system (USFWS 2015b), EMNRD (2015), New Mexico Partners in Flight (2015), New Mexico Rare Plant Technical Council (1999) and Cartron (2010).

Sprague's Pipit (*Anthus spragueii*)

Sprague's pipit is federally listed as a candidate species as a result of range contraction and population decline since the late nineteenth century. The species is migratory, breeding on the Great Plains but wintering farther south, in Arizona, New Mexico, Texas, Oklahoma, Arkansas, Mississippi, Louisiana, and northern Mexico. It leaves its breeding grounds anywhere from September through November and will arrive on wintering grounds over the same period. A small wintering population is known to occur in grasslands of southern New Mexico (New Mexico Partners in Flight 2015a).

Sprague's pipit prefers well-drained areas of open grassland with native grasses of intermediate height and thickness with moderate litter depths. Although Sprague's pipits appear to tolerate disturbed grasslands, they are strongly tied to native prairie (land that has never been plowed) throughout their life cycle and are rarely observed in croplands or on land in the Conservation Reserve Program (i.e., projects aimed at converting marginal farmland back to grassland) (USFWS 2013). The species may also occur in alkaline meadows and in wet meadows adjacent to alkali and freshwater lakes.

This species could occur in the survey area during winter, but would not be expected to breed in the vicinity of the existing transmission line. No individuals of this species were detected during the 2015 field surveys. Impacts to Sprague's pipit present in the survey area would be possible in the form of maintenance-related noise disturbance, but such impacts would only be temporary and would not likely contribute to a trend towards federal listing or cause a loss of viability to the population or species.

Baird's Sparrow (*Ammodramus bairdii*)

Baird's sparrow is a threatened species in the state of New Mexico. The species' breeding distribution is from Saskatchewan and Manitoba south to Montana and Minnesota. It primarily winters on grasslands of northern Mexico, although its winter range extends into small portions of southwest Texas, southeast Arizona, and southern New Mexico (NMDGF 1994; National Audubon Society 2014). Baird's sparrows migrate in the eastern plains and southern lowlands of New Mexico and are considered rare to uncommon (NMDGF 1994).

The preferred habitat of Baird's sparrow is expansive, dense grasslands with little shrub cover. It avoids areas that have been grazed heavily. It breeds in short grass prairies (National Audubon Society 2014). In New Mexico it has been found in a wide variety of habitats ranging from desert grasslands in the south to prairies in the northeast and mountain meadows in the San Juan and Sangre de Cristo Mountains.

The probability of Baird's sparrow presence in the survey area is low. Impacts to the species would be possible in the form of maintenance-related noise disturbance, but such impacts would only be temporary and would not likely contribute to a trend towards federal listing or cause a loss of viability to the population or species.

Bald Eagle (*Haliaeetus leucocephalus alascanus*)

Bald eagle is a threatened species in the state of New Mexico. Although the largest breeding concentrations are in Alaska and Canada, bald eagles use suitable aquatic habitat throughout most of the continental United State. Breeding in the Southwest is limited, but has increased in recent years (New Mexico Partners in Flight 2015b).

In New Mexico, the species is relatively common in the winter and during migration, along watercourses and reservoirs (Buehler 2000; Parmeter et al. 2002). Bald eagles occur locally in the summer at several locations throughout the state, adjacent to bodies of water. Breeding habitat generally consists of mature

or old-growth forest with some habitat edge, relatively close to suitable foraging areas. Distance of territories to water varies within and among populations, depending on the type and quality of foraging opportunities (Buehler 2000). Where possible, bald eagles select habitat away from areas of human disturbance and development (Anthony and Isaacs 1989; Wood et al. 1989). Bald eagles typically nest in large trees, often ponderosa pine or cottonwood, with exposed branches strong enough to support the large nest. The same nest tree may be reused for many years. Nest construction may begin as early as February, and a single brood is raised throughout the summer. Foraging areas have tall, easily accessible trees for perching. Most perch trees used are live trees, although dead trees are preferred if available (Stalmaster 1987).

Bald eagles winter along the Rio Grande, located 5 miles east of the existing transmission line. Bald eagles could potentially forage in the survey area or perch on the existing transmission towers. The survey area lacks large water bodies, has few trees, and lacks abundant prey species. No prairie dog colonies occur within the survey area. Potential impacts to the species would be possible in the form of maintenance-related noise disturbance, but such impacts would only be temporary and would not likely contribute to a trend towards federal listing or cause a loss of viability to the population or species.

Conclusion

Based on survey results and lack of suitable habitat, EPEC's continued operation and maintenance of a 115-kV transmission line on Isleta Pueblo lands is not anticipated to negatively affect federal or state special status plant or wildlife species or their habitats. State and federal special status plant and wildlife species were not present at the time of the survey.

In general, no major or long-term effects on migratory birds are anticipated from EPEC's continued operation and maintenance of a 115-kV transmission line on Isleta Pueblo lands. Incidental displacement of migratory birds is possible on a local scale during maintenance-related activities due to temporary elevations in ambient noise levels. However, many birds occurring locally would move into similar abundant habitat adjacent to the right-of-way.

A few nests of non-raptor bird species were identified during the biological survey (see Figure A.2 in Appendix A). If maintenance activities, including mechanical treatments of woody vegetation, cannot be avoided in the primary nesting season for migratory birds (March 1–August 31), migratory bird nest surveys would be performed up to 2 weeks prior to commencing with those activities. An avoidance buffer around each active nest would be implemented until the young have fledged, the size and timing of which may vary by species, but would be no less than 100 feet. This stipulation would not apply in the event of an emergency as per EPEC's Migratory Bird Special Purpose Utility Permit.

REFERENCES

- Anthony, R. G., and F. B. Isaacs. 1989. Characteristics of Bald Eagle nest sites in Oregon. *Journal of Wildlife Management* 53:148–159.
- Biota Information System of New Mexico (BISON-M). 2015. BISON-M home page. Available at: <http://www.bison-m.org>. Accessed November 2015.
- Brown, D.E. 1994. *Biotic Communities Southwestern United States and Northwestern Mexico*. Salt Lake City, Utah: University of Utah Press.
- Buehler, D. A. 2000. Bald Eagle (*Haliaeetus leucocephalus*). In *The Birds of North America*, No. 506, edited by A. Poole and F. Gill. Philadelphia: The Birds of North America, Inc.
- Cartron, J-L.E. (ed.). 2010. *Raptors of New Mexico*. Albuquerque: University of New Mexico Press.
- Cowardin, L.M., V. Carter, F.C. Golet, and E.T. LaRoe. 1979. *Classification of Wetlands and Deepwater Habitats of the United States*. FWS/OBS-79/31. Washington, D.C.: U.S. Fish and Wildlife Service.
- Frey, J.K. 2005. *Status Assessment of Montane Populations of the New Mexico Meadow Jumping Mouse (Zapus hudsonius luteus) in New Mexico*. Report to New Mexico Department of Game and Fish, Santa Fe, New Mexico. Contract # 05-516.57.
- Griffith, G.E., J.M. Omernik, M.M. McGraw, G.Z. Jacobi, C.M. Canavan, T.S. Schrader, D. Mercer, R. Hill, and B.C. Moran. 2006. Ecoregions of New Mexico (two-sided color poster with map, descriptive text, summary tables, and photographs). U.S. Geological Survey, Reston, VA. Scale 1:1,400,000.
- Hafner, D.J., K.E. Petersen, and T.L. Yates. (1981). Evolutionary relationships of jumping mice (genus *Zapus*) of the southwestern United States. *Journal of Mammalogy* 62:501–512
- National Audubon Society. 2014. Baird's sparrow (*Ammodramus bairdi*). Available at: <http://birds.audubon.org/species/baispa>. Accessed December 2015.
- Natural Resources Conservation Service (NRCS). 2015a. Web Soil Survey of Bernalillo and Valencia Counties, New Mexico. Available at: <http://websoilsurvey.nrcs.usda.gov/app/>. Accessed November 2015.
- . 2015b. The PLANTS Database. Available at: <http://plants.usda.gov>. Accessed November 2015.
- NatureServe. 2015. NatureServe Explorer. Available at: <http://explorer.natureserve.org/>. Accessed November 2015.
- New Mexico Avian Protection Working Group. 2005. *Common Raptors and Other Large Birds of New Mexico*. Prepared by Gail Garber and Sarah Young, Hawks Aloft, Inc.
- New Mexico Department of Agriculture. 2009. New Mexico Noxious Weed List Update. New Mexico State University. Available at: http://www.nmda.nmsu.edu/wp-content/uploads/2012/01/weed_memo_list.pdf. Accessed November 2015.

New Mexico Department of Game and Fish (NMDGF). 1994. *NMDGF Handbook of Species Endangered in New Mexico*. Santa Fe, New Mexico: New Mexico Department of Game and Fish.

New Mexico Energy, Minerals, and Natural Resources Department (EMNRD). 2015. New Mexico State Endangered Plant Species (19.21.2.8 NMAC). Available at: <http://www.emnrd.state.nm.us/SFD/ForestMgt/documents/NMENDANGEREDPLANTList.pdf>. Accessed October 2015.

New Mexico Rare Plant Technical Council. 1999. New Mexico Rare Plants Website (Version 20 April 2015). Available at: <http://nmrareplants.unm.edu>. Accessed November 2015.

New Mexico Partners in Flight. 2015a. Sprague's Pipit Species Account. Available at: <http://www.nmpartnersinflight.org/spraguespipit.html>. Accessed December 2015.

———. 2015b. Bald Eagle Species Account. Available at: <http://www.nmpartnersinflight.org/baldeagle.html>. Accessed December 2015.

Parmeter, J., B. Neville, and D. Emkalns. 2002. *New Mexico Bird Finding Guide*. Albuquerque: New Mexico Ornithological Society.

Stahlecker, D.W., and H.A. Walker. 2010. Bald eagle. In *Raptors of New Mexico*, edited by J.-L. E. Cartron, pp. 131–149. Albuquerque: University of New Mexico Press.

Stalmaster, M.V. 1987. *The Bald Eagle*. New York: Universe Books.

U.S. Army Corps of Engineers (USACE). 1987. Corps of Engineers Wetlands Delineation Manual. Technical Report Y-87-1. Vicksburg, Mississippi: U.S. Army Corps of Engineers, Waterways Experiment Station.

———. 2008a. Regional Supplement to the Corps of Engineers Wetland Delineation Manual: Arid West Region, Version 2.0. ERDC/EL TR-08-28. Vicksburg, Mississippi: U.S. Army Corps of Engineers, Engineer Research and Development Center.

———. 2008b. A Field Guide to the Identification of the Ordinary High Water Mark (OHWM) in the Arid West Region of the Western United States: A Delineation Manual. ERDC/EL TR-08-12. Vicksburg, Mississippi: U.S. Army Corps of Engineers, Engineer Research and Development Center.

U.S. Department of Agriculture. 2015. Introduced, Invasive, and Noxious Plants: Federal Noxious Weeds. Available at: <http://plants.usda.gov/java/noxious?rptType=Federal>. Accessed November 2015.

U.S. Fish and Wildlife Service (USFWS). 2005. *Pecos Sunflower Recovery Plan*. Albuquerque: U.S. Fish and Wildlife Service.

———. 2013. U.S. Fish and Wildlife Service Species Profile for Sprague's Pipit. Available at: <http://ecos.fws.gov/speciesProfile/profile/speciesProfile.action?spcode=B0GD>. Accessed December 2015.

———. 2015a. National Wetlands Inventory. <http://www.fws.gov/wetlands>. Accessed November 2015.

- . 2015b. Information for Planning and Conservation (IPaC) System. Available at: <http://ecos.fws.gov/ipac/>. Accessed November 2015.
- . 2015c. U.S. Fish and Wildlife Service Critical Habitat Portal. Available at: <http://criticalhabitat.fws.gov/>. Accessed November 2015.
- U.S. Geological Survey (USGS). 2015. National Hydrography Dataset. Available at: <http://nhd.usgs.gov/>. Accessed November 2015.
- Western Regional Climate Center. 2015. Climate summary for Los Lunas, NM Station No. 295147. Retrieved from: <http://www.wrcc.dri.edu/cgi-bin/cliMAIN.pl?nm5147>. Accessed November 2015
- Wetland Training Institute, Inc. 2013. *Pocket Guide to Hydric Soil Field Indicators, Version 7.0 with Updates*. Robert J. Pierce (ed). Glenwood, New Mexico: Wetland Training Institute, Inc. Wood, P. B., T. C. Edwards, and M. W. Collopy. 1989. Characteristics of Bald Eagle nesting habitat in Florida. *Journal of Wildlife Management* 53:441–449.
- Zwank, P.J., B.L. Tarrant, R. Valdez, and D.L. Clason. 1996. Wintering Bald Eagle populations and behavior in the Middle Rio Grande Basin, New Mexico. *Southwestern Naturalist* 41:149–154.

APPENDIX A PROJECT MAPS

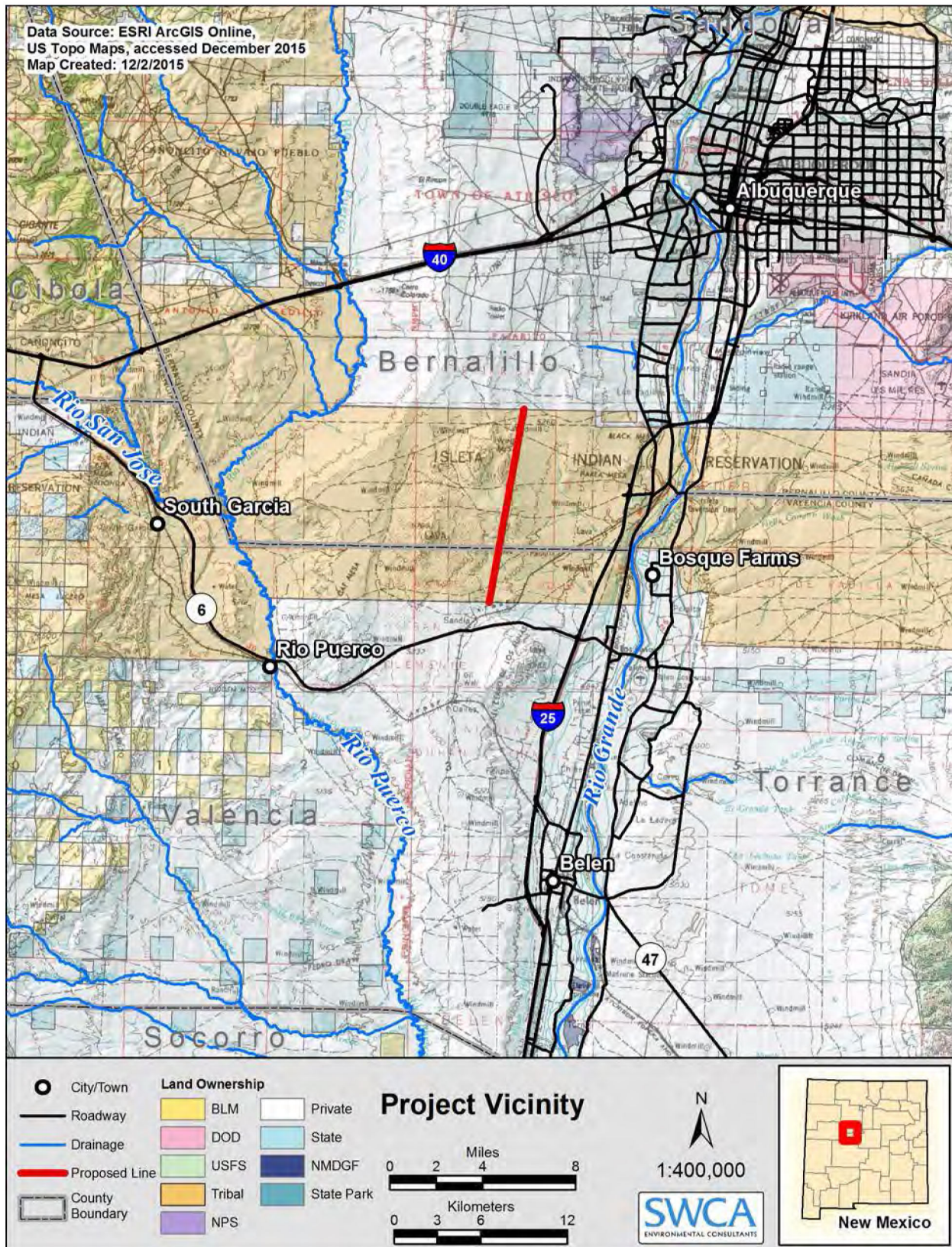


Figure A.1. Project vicinity map.

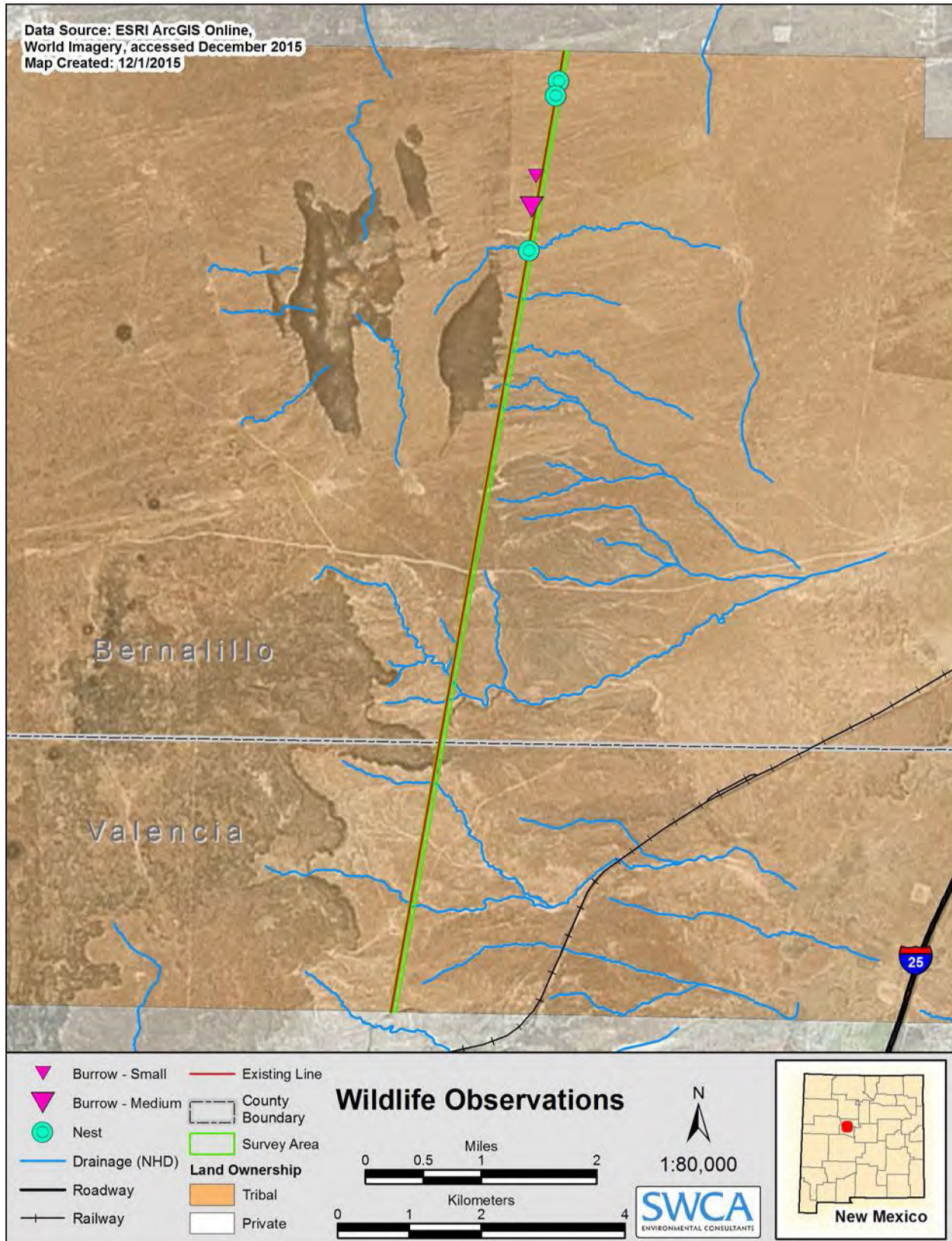


Figure A.2. Wildlife observations.

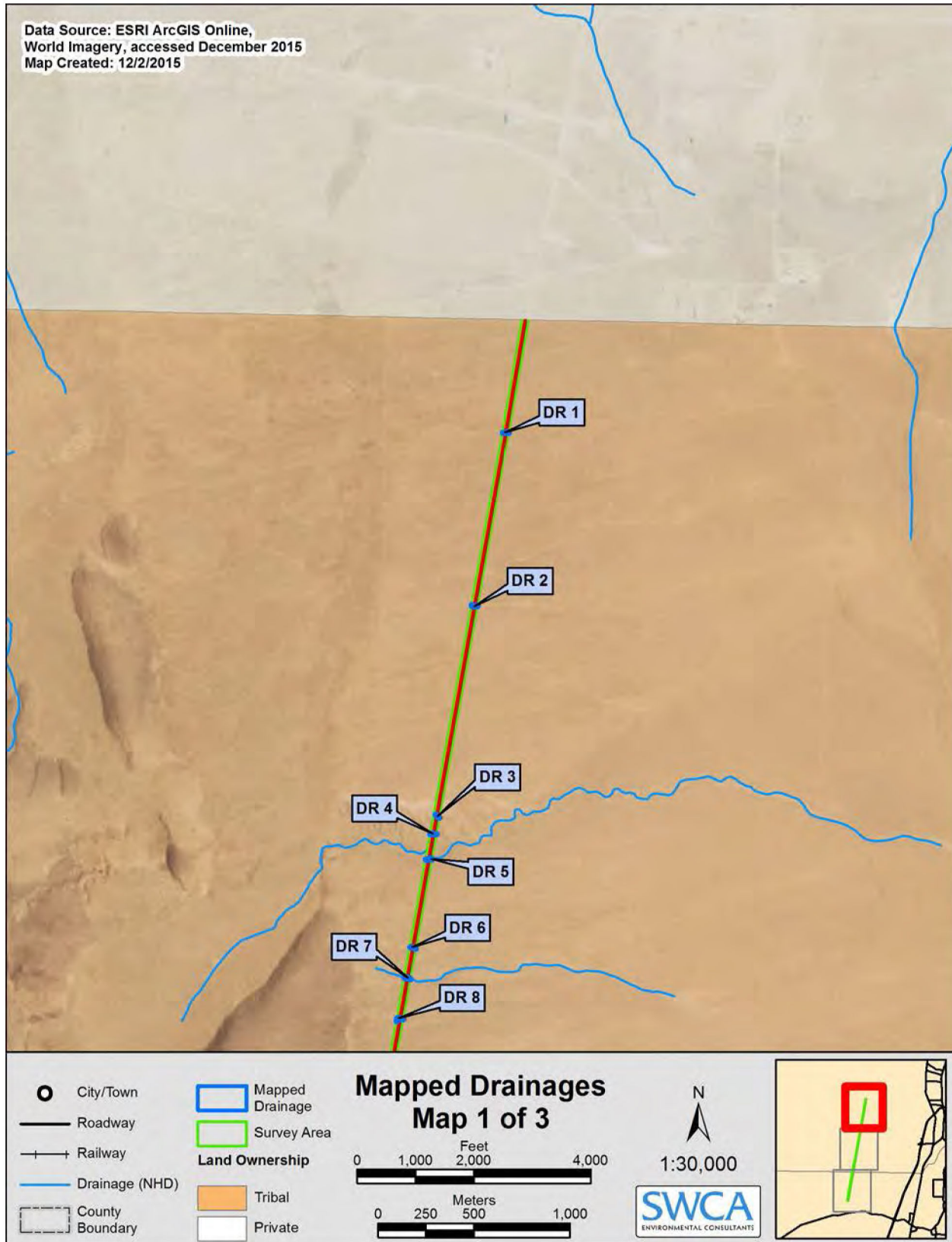


Figure A.3. Mapped drainages 1 of 3.

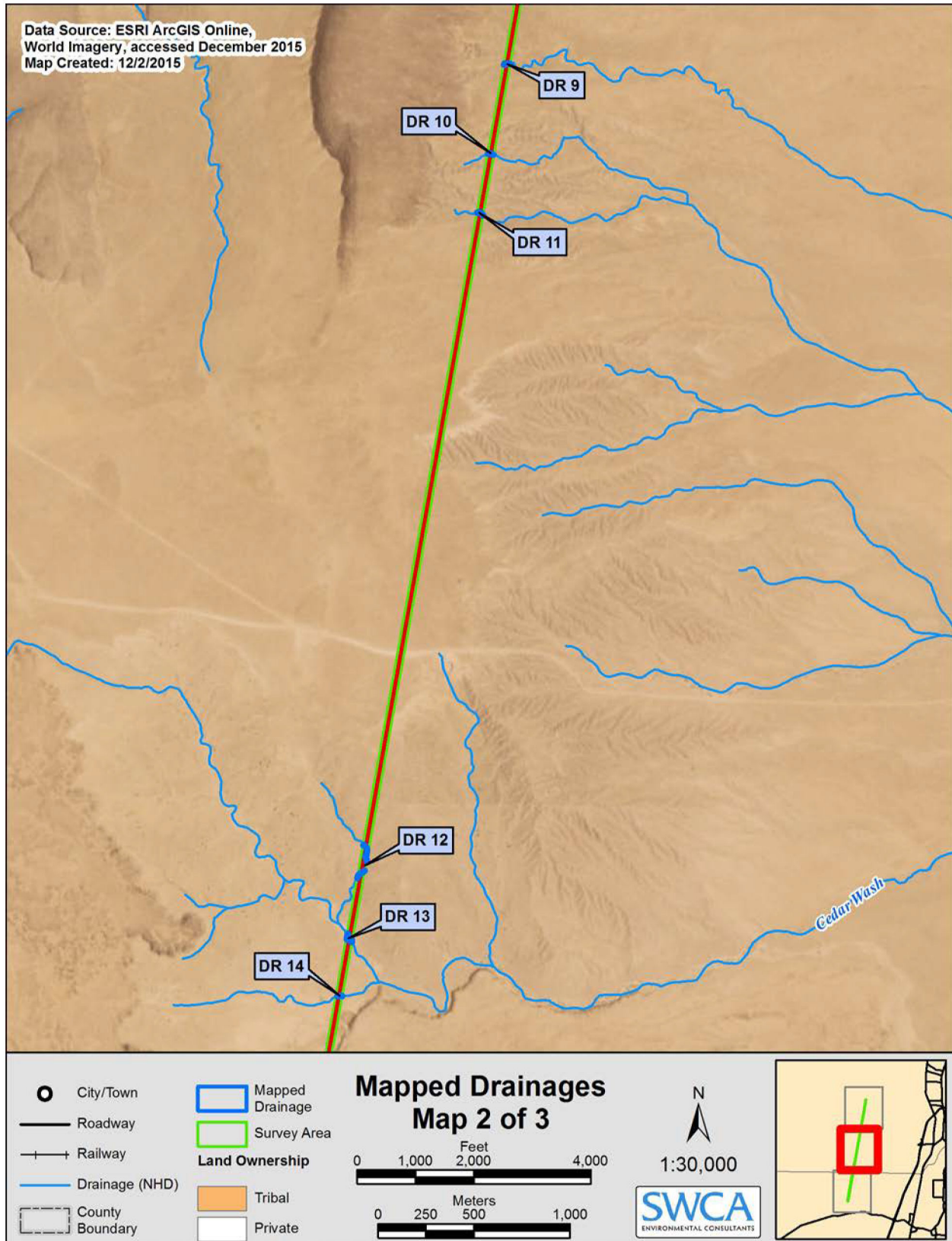


Figure A.4. Mapped drainages 2 of 3.

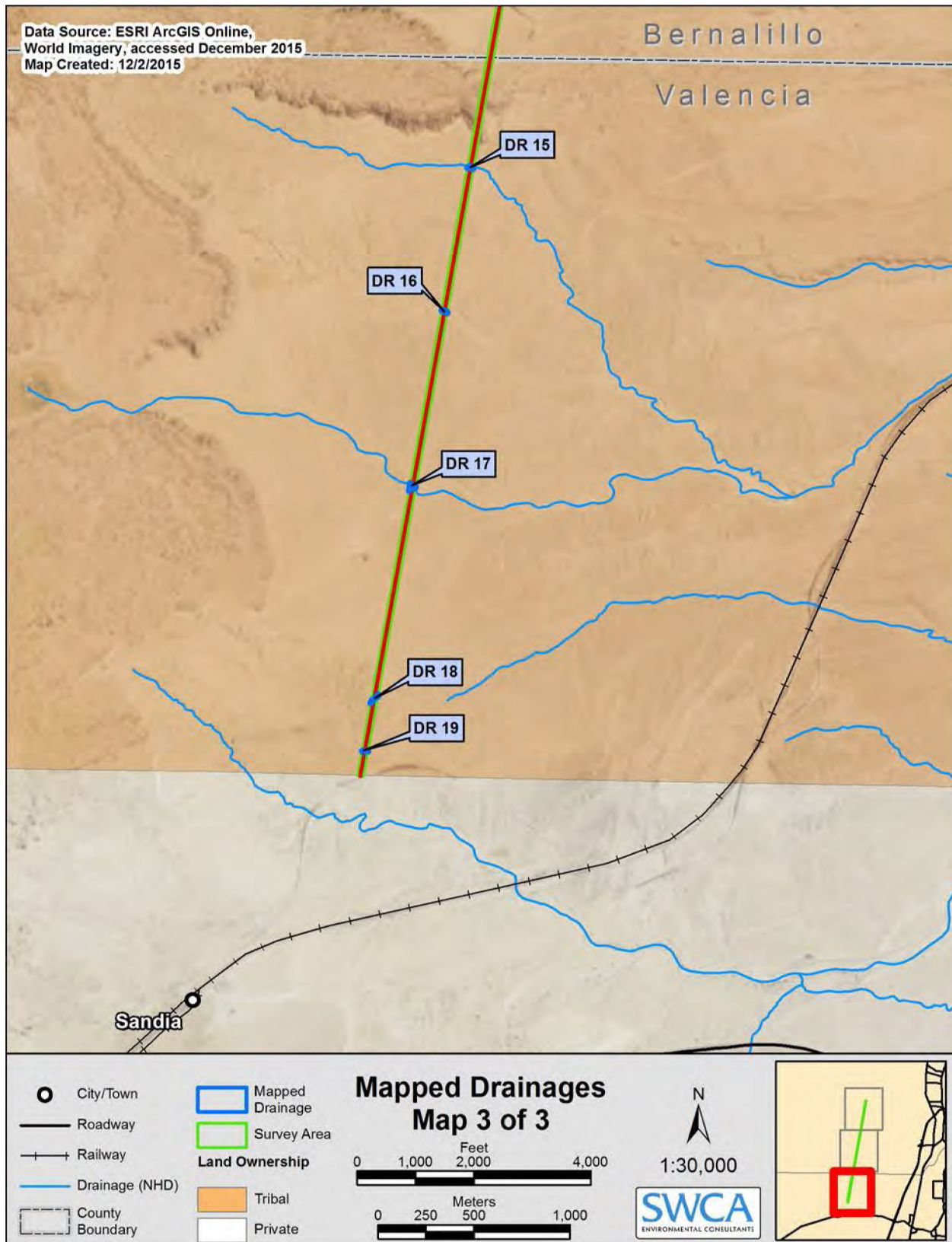


Figure A.5. Mapped drainages 2 of 3.

APPENDIX B PROJECT PHOTOGRAPHS



Photograph B.1. Representative view of vegetation within the right-of-way.



Photograph B.2. Representative view of vegetation within the right-of-way.



Photograph B.3. Representative view of vegetation within the right-of-way.



Photograph B.4. View of nest on transmission tower.



Photograph B.5. Example of burrows observed.



Photograph B.6. View of American porcupine near the survey area.



Photograph B.7. View of stock tank located east of the survey area.

APPENDIX C WETLANDS AND WATERWAYS



Photograph C.1. View of DR01 facing west.



Photograph C.2. View of DR01 facing east.



Photograph C.3. View of DR02 facing west.



Photograph C.4. View of DR02 facing east.



Photograph C.5. View of DR03 facing west.



Photograph C.6. View of DR03 facing east.



Photograph C.7. View of DR04 facing west.



Photograph C.8. View of DR04 facing east.



Photograph C.9. View of DR05 facing west.



Photograph C.10. View of DR05 facing east.



Photograph C.11. View of DR06 facing west.



Photograph C.12. View of DR06 facing east.



Photograph C.13. View of DR07 facing west.



Photograph C.14. View of DR07 facing east.



Photograph C.15. View of DR08 facing west.



Photograph C.16. View of DR08 facing east.



Photograph C.17. View of DR09 facing west.



Photograph C.18. View of DR09 facing east.



Photograph C.19. View of DR10 facing west.



Photograph C.20. View of DR10 facing east.



Photograph C.21. View of DR11 facing west.



Photograph C.22. View of DR11 facing east.



Photograph C.23. View of DR12 facing west.



Photograph C.24. View of DR12 facing east.



Photograph C.25. View of DR13 facing west.



Photograph C.26. View of DR13 facing east.



Photograph C.27. View of DR14 facing west.



Photograph C.28. View of DR14 facing east.



Photograph C.29. View of DR15 facing east.



Photograph C.30. View of DR15 facing east.



Photograph C.31. View of DR16 facing west.



Photograph C.32. View of DR16 facing east.



Photograph C.33. View of DR17 facing west.



Photograph C.34. View of DR17 facing east.



Photograph C.35. View of DR18 facing west.



Photograph C.36. View of DR18 facing east.



Photograph C.37. View of DR19 facing west.



Photograph C.38. View of DR19 facing east.

CATEGORICAL EXCLUSION EXCEPTION REVIEW (CEER) CHECKLIST

Project: Isleta Pueblo - El Paso Electric Right-of-Way Renewal	Date: 06/26/17
Letter and Text of category (BIA - 516 DM 10.5 ; DOI - 43 CFR46-210) 516 DM 10.5F(3) Renewals, assignments and conversions of existing right-of-way.	

Evaluation of Extraordinary Circumstances (43 CFR 46.215):

1. This action would have significant impacts on public health or safety.	NO	<input checked="" type="checkbox"/>	YES	<input type="checkbox"/>
2. This action would have significant impacts on: natural resources & unique geographical features as historic or cultural resources; park, recreation or refuge lands; wilderness areas; wild & scenic rivers; national natural landmarks; sole or prime drinking water aquifers; prime farmlands wetlands; floodplains; national monuments; migratory birds; and other ecologically significant areas.	NO	<input checked="" type="checkbox"/>	YES	<input type="checkbox"/>
3. This action would have highly controversial environmental effects or unresolved conflicts concerning alternate uses of available resources.	NO	<input checked="" type="checkbox"/>	YES	<input type="checkbox"/>
4. This action would have highly uncertain environmental effects or involve unique or unknown environmental risk.	NO	<input checked="" type="checkbox"/>	YES	<input type="checkbox"/>
5. This action will establish a precedent for future actions.	NO	<input checked="" type="checkbox"/>	YES	<input type="checkbox"/>
6. This action is related to other actions with individually insignificant but cumulatively significant environmental effects.	NO	<input checked="" type="checkbox"/>	YES	<input type="checkbox"/>
7. This action will have significant impacts on properties listed or eligible for listing in the National Register of Historic Places.	NO	<input checked="" type="checkbox"/>	YES	<input type="checkbox"/>
8. This action will have significant impacts on a species listed or proposed to be listed as endangered or threatened, or Critical Habitat of these.	NO	<input checked="" type="checkbox"/>	YES	<input type="checkbox"/>
9. This action violates federal, state, local, or tribal law or requirements imposed for protection of the environment.	NO	<input checked="" type="checkbox"/>	YES	<input type="checkbox"/>
10. This action will have a disproportionately high and adverse effect on low income or minority populations.	NO	<input checked="" type="checkbox"/>	YES	<input type="checkbox"/>
11. This action will limit access to, and ceremonial use of, Indian sacred sites on federal lands, by Indian religious practitioners, and/or adversely affect the physical integrity of such sites.	NO	<input checked="" type="checkbox"/>	YES	<input type="checkbox"/>
12. This action will contribute to the introduction, continued existence, or spread of noxious weeds or non-native invasive species known to occur in the area, or may promote the introduction, growth, or expansion of the range of such species.	NO	<input checked="" type="checkbox"/>	YES	<input type="checkbox"/>

A "yes" to any of the above exceptions will require that an environmental assessment be prepared.

NEPA Action: CE ☒ EA ☐

Project (con't): Isleta Pueblo - El Paso Electric Right-of-Way Renewal

Name and Title of person preparing this checklist

Jessica Christianson, Environmental Manager, El Paso Electric Company

Concur: **Regional Archeologist** **Date:**

Concur: **Other Environmental Professional** **Date:**

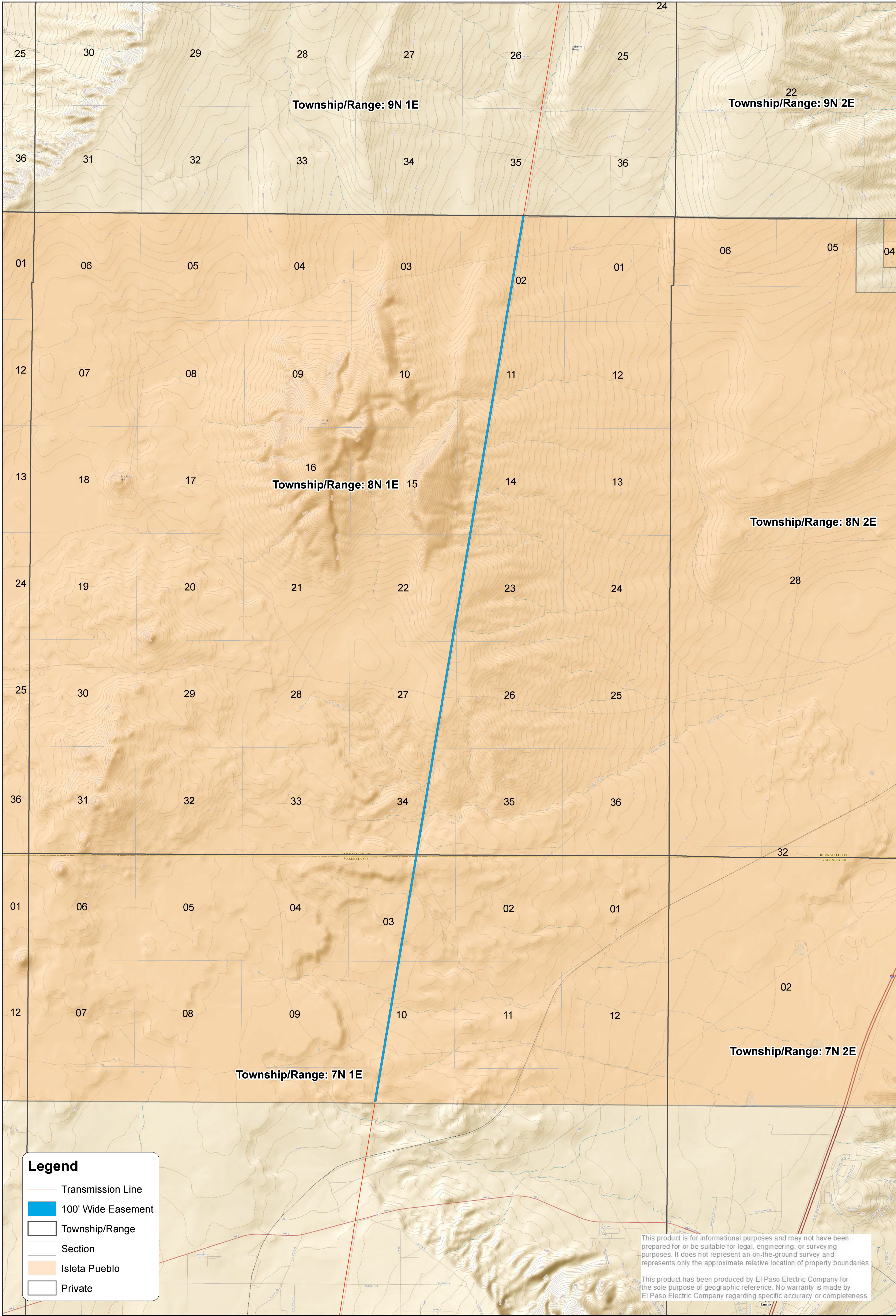
Concur: **Regional/Agency/OFMC NEPA Reviewer** **Date:**

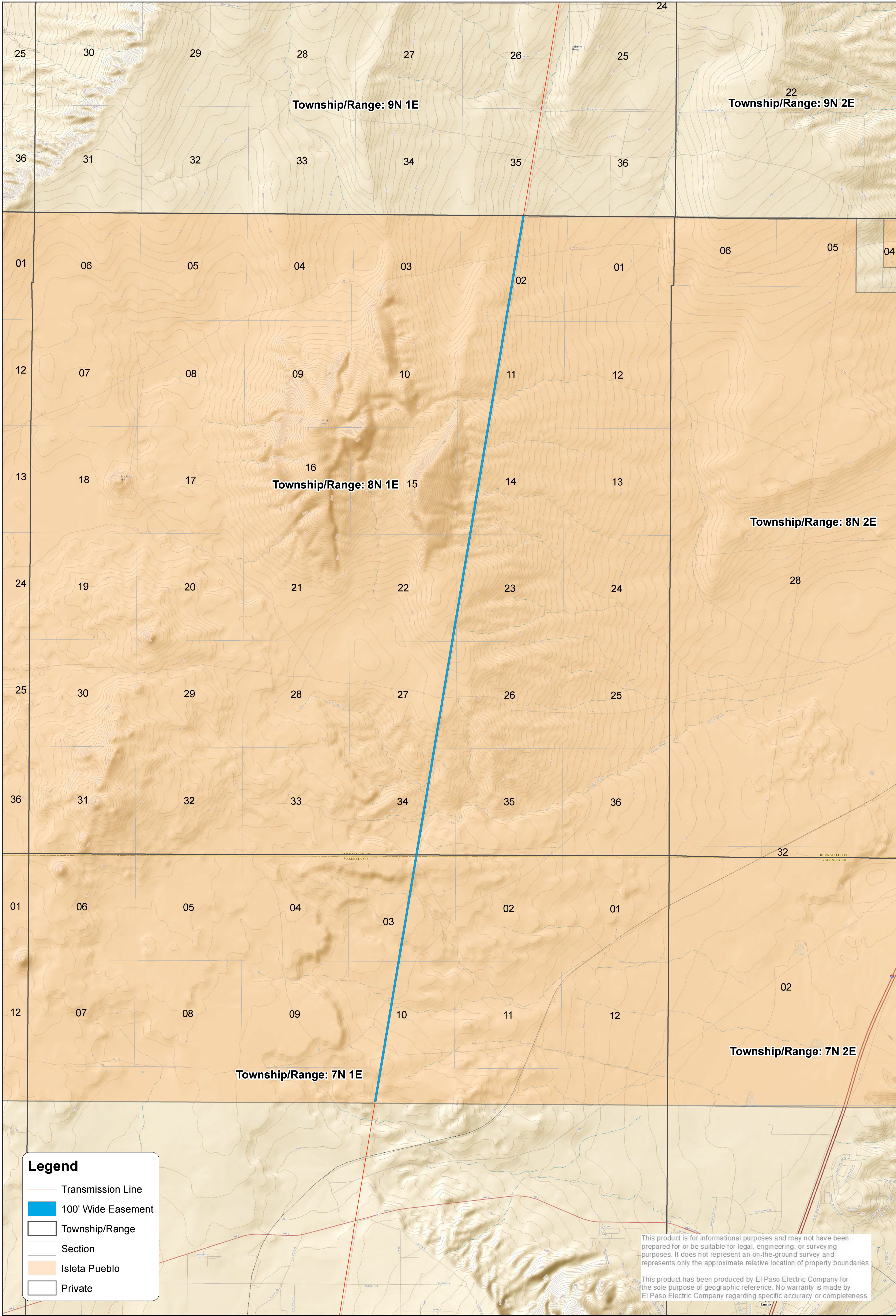
Approve: **Regional Director/Agency Superintendent/
OFMC Official** **Date:**

NOTES: Enclosures:

Cultural Resource Inventory, SWCA Environmental Consultants, January 2016 -
NMCRIS Activity No.: 134852

Biological Survey Technical Memorandum, SWCA Environmental Consultants, January
2016



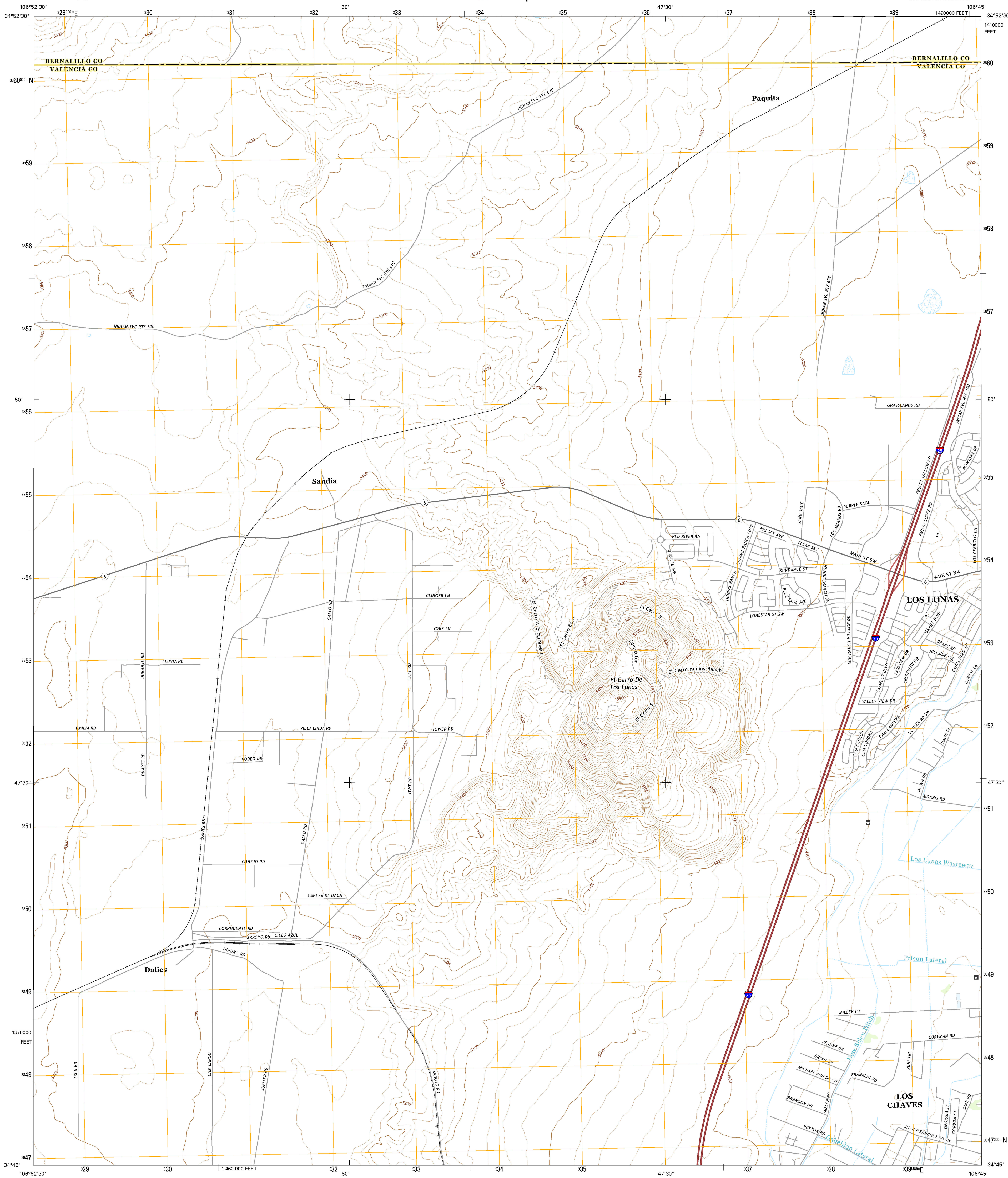




U.S. DEPARTMENT OF THE INTERIOR
U.S. GEOLOGICAL SURVEY

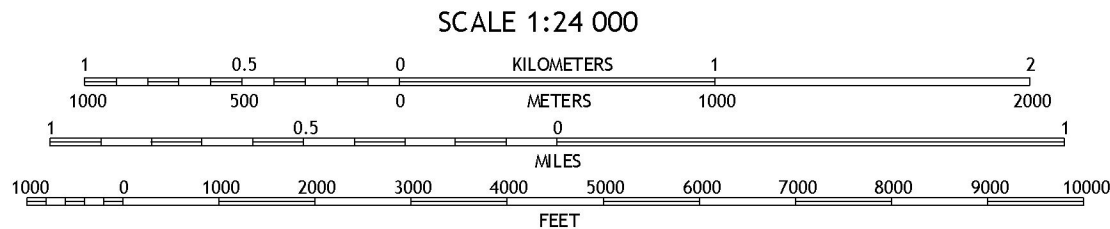
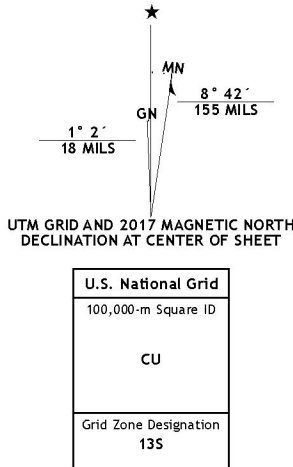


DALIES QUADRANGLE
NEW MEXICO
7.5-MINUTE SERIES

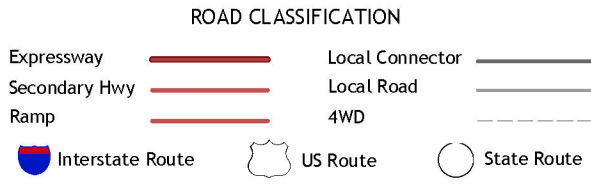
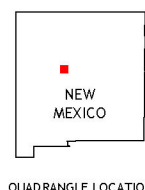


Produced by the United States Geological Survey
North American Datum of 1983 (NAD83)
World Geodetic System of 1984 (WGS84). Projection and
1000-meter grid: Universal Transverse Mercator, Zone 13S
10 000-foot ticks: New Mexico Coordinate System of 1983
(central zone)

This map is not a legal document. Boundaries may be
generalized for this map scale. Private lands within government
reservations may not be shown. Obtain permission before
entering private lands.
Imagery.....NAIP, September 2014
Roads.....U.S. Census Bureau, 2015 - 2016
Names.....National Hydrography Dataset, 2014
Hydrography.....National Elevation Dataset, 1999
Contours.....Multiple sources; see metadata file 1972 - 2016
Public Land Survey System.....BLM, 2016
Wetlands.....FWS National Wetlands Inventory 1977 - 2014



This map was produced to conform with the
National Geospatial Program US Topo Product Standard, 2011.
A metadata file associated with this product is draft version 0.6.19



1	2	3
4	5	6
7	8	9

1 Dalies NW
2 Wind Mesa
3 Isleta
4 Rio Puerco
5 Los Lunas
6 Belen NW
7 Belen
8 Tome

DALIES, NM
2017

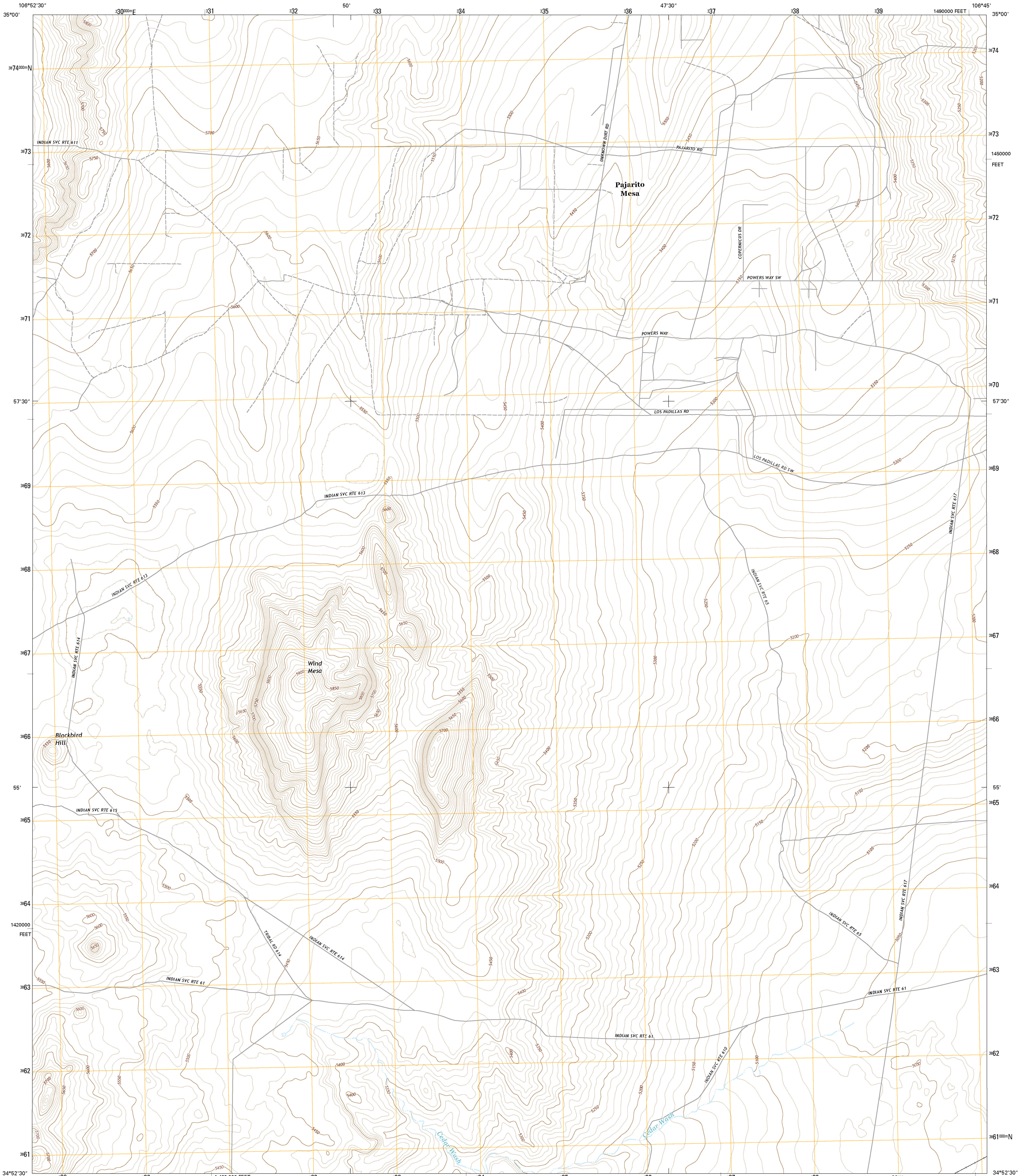




U.S. DEPARTMENT OF THE INTERIOR
U.S. GEOLOGICAL SURVEY



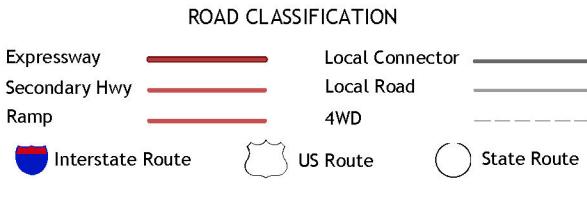
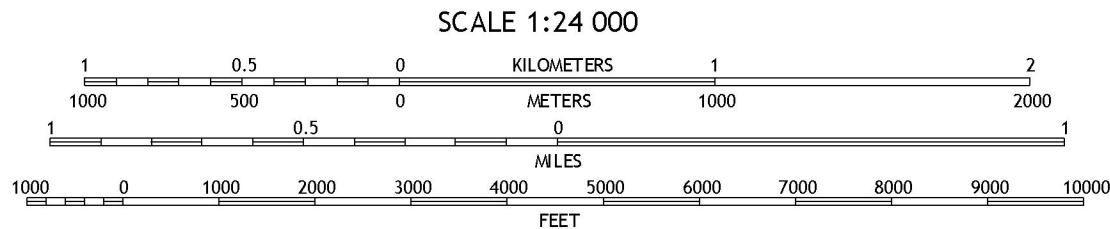
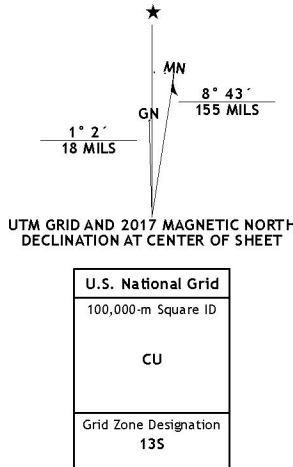
WIND MESA QUADRANGLE
NEW MEXICO-BERNALILLO CO.
7.5-MINUTE SERIES



Produced by the United States Geological Survey
North American Datum of 1983 (NAD83)
World Geodetic System of 1984 (WGS84). Projection and
1000-meter grid: Universal Transverse Mercator, Zone 13S
10 000-foot ticks: New Mexico Coordinate System of 1983
(central zone)

This map is not a legal document. Boundaries may be
generalized for this map scale. Private lands within government
reservations may not be shown. Obtain permission before
entering private lands.

Imagery.....NAIP, September 2014
Roads.....U.S. Census Bureau, 2015 - 2016
Names.....GNIS, 2016
Hydrography.....National Hydrography Dataset, 2014
Contours.....National Elevation Dataset, 1999
Boundaries.....Multiple sources; see metadata file 1972 - 2016
Public Land Survey System.....BLM, 2016
Wetlands.....FWS National Wetlands Inventory 1977 - 2014



1	2	3
4	5	6
7	8	9

1 La Mesa Negra
2 La Mesa Negra SE
3 Albuquerque West
4 Dalles NW
5 Jileta
6 Rio Puerto
7 Dalles
8 Los Lunas

WIND MESA, NM
2017



Project	PROJECT DESCRIPTION	Expense Type	Cost Center	CURRENT PROJECT TOTAL	PROJECT COSTS TO DATE	FEBRUARY 2017	MARCH 2017	APRIL 2017	MAY 2017	JUNE 2017
		060 - Materials - Purchases		0	0	0	0	0	0	0
		063 - Commercial Meters/Adapters		0	0	0	0	0	0	0
		070 - Subcontractor Charges		112,678	82,678	0		7,500	7,500	7,500
		080 - Consulting		0	0	0	0	0	0	0
		090 - Outside Svcs - Legal		24,580	18,580	1,000	1,000	1,000	1,000	1,000
		100 - OUTSIDE Engineering		0	0	0	0	0	0	0
		140 - Rents		12,000,000	0	0	0	0	0	0
		295 - CIAC		0	0	0	0	0	0	0
		299 - Land		0	0	0	0	0	0	0
		310 - Material		0	0	0	0	0	0	0
		391 - Straight Time	3380	2,303	1,103	200	200	200	200	200
		391 - Straight Time	7295	9,146	7,946	200	200	200	200	200
		391 - Straight Time	7297	2,940	1,740	200	200	200	200	200
		391 - Straight Time		0	0	0	0	0	0	0
		895 - OTHER		0	0	0	0	0	0	0
				12,151,647	112,047	1,600	1,600	9,100	9,100	9,100

		SEPTEMBER		NOVEMBER											
JULY 2017	AUGUST 2017	2017	OCTOBER 2017	2017	DECEMBER 2017	2017 TOTAL	JANUARY 2018	FEBRUARY 2018	MARCH 2018	APRIL 2018	MAY 2018	JUNE 2018	JULY 2018		
0	0	0	0	0	0	0	0	0	0	0	0	0	0	0	
0	0	0	0	0	0	0	0	0	0	0	0	0	0	0	
7,500	0	0	0	0	0	30,000	0	0	0	0	0	0	0	0	
0	0	0	0	0	0	0	0	0	0	0	0	0	0	0	
1,000	0	0	0	0	0	6,000	0	0	0	0	0	0	0	0	
0	0	0	0	0	0	0	0	0	0	0	0	0	0	0	
12,000,000	0	0	0	0	0	12,000,000	0	0	0	0	0	0	0	0	
0	0	0	0	0	0	0	0	0	0	0	0	0	0	0	
0	0	0	0	0	0	0	0	0	0	0	0	0	0	0	
0	0	0	0	0	0	0	0	0	0	0	0	0	0	0	
200	0	0	0	0	0	1,200	0	0	0	0	0	0	0	0	
200	0	0	0	0	0	1,200	0	0	0	0	0	0	0	0	
200	0	0	0	0	0	1,200	0	0	0	0	0	0	0	0	
0	0	0	0	0	0	0	0	0	0	0	0	0	0	0	
0	0	0	0	0	0	0	0	0	0	0	0	0	0	0	
12,009,100	0	0	0	0	0	12,039,600	0	0	0	0	0	0	0	0	

[illegible]

[illegible]

[illegible]

[illegible]

[illegible]

[illegible]

[illegible]

[illegible]

[illegible]

From: [Christianson, Jessica](#)
To: Janelle.jersey@bia.gov
Cc: [Kirk R. Allen \(kallen@mstlaw.com\)](mailto:kallen@mstlaw.com) (kallen@mstlaw.com)
Subject: El Paso Electric - Isleta Pueblo Right of Way Renewal
Date: Friday, June 30, 2017 8:08:21 AM
Attachments: [Categorical Exclusion Exception Review Checklist](#)

Good Morning Janelle:

On behalf of El Paso Electric Company I am submitting the attached documents to facilitate your NEPA review of a right-of-renewal between the Isleta Pueblo and El Paso Electric. I understand you had previous communication with Kirk Allen regarding this matter and the necessary submittals. Attached you will find all the indicated items including:

- Categorical Exclusion Exception Review Checklist
- The cultural resources survey request form. (However, El Paso Electric had conducted a Cultural resource survey of the subject property in February 2015)
- Cultural Resource Inventory, SWCA Environmental Consultants, February 2016 - NMCRIS Activity No.: 134852 - CONFIDENTIAL
- Biological Survey Technical Memorandum, SWCA Environmental Consultants, January 2016
- 1:24000 Right-of-Way Map

We will also be submitting a hard copy of the attachments to Mr. John E. Antonio, Sr., Superintendent; Southern Pueblos Agency.

Please do not hesitate to contact me directly with any questions or if you require any additional information.

Look forward to working with you as we move through this process.

Thank you,

Jessica

Jessica Christianson | El Paso Electric Company
Manager, Environmental
P O Box 982 | El Paso Texas, 79960
T 915 351 4258 | C 915 487 1262
Jessica.Christianson@epelectric.com



CONFIDENTIALITY NOTICE The information contained in this electronic mail transmission is CONFIDENTIAL, and it may qualify as material protected pursuant to the Texas Uniform Trade Secrets Act, the New Mexico Uniform Trade Secrets Act, or other laws. If you are not the intended recipient, please destroy/delete this message and any attachments and immediately notify the sender.

From: [Mark Apachee](#)
To: [Westberg, Mary Ann](#); [Paulk, Ryan R](#); jessica.chistianson@epelectric.com
Cc: [Mel Apachee](#); [Matthew Apachee](#); [Mark Murray](#)
Subject: EPE - G&P Land - Meeting recap from Dec. 5, 2014
Date: Monday, December 08, 2014 12:55:54 PM
Attachments: [EPE - G&P Land - Meeting recap from Dec. 5, 2014.pdf](#)

I have attached a recap of the meeting between G&P Land and El Paso Electric Company. Meeting was held in Las Cruces, New Mexico on December 5, 2014 in regards to the proposed 235 kV Transmission Line Right-of-Way Renewal across Isleta Pueblo Lands. If you have any other questions or concerns please call or email myself or one of the G&P team members.

Mark Apachee

Right of Way Agent
928.245.9690

From: [Westberg, Mary Ann](#)
To: [Paulk, Ryan R](#)
Subject: FW: 12/5 Meeting Agenda
Date: Wednesday, December 03, 2014 1:55:13 PM
Attachments: [Kick-off meeting agenda.docx](#)

Comment? Anything additional you would like to discuss?

Mary Ann

Mary Ann Westberg, SRWA | [El Paso Electric Company](#)
Principal, Land Management Representative
P O Box 910 , Las Cruces, NM 88004
T (575) 523-3682 C (575) 644-3751
Maryann.westberg@epelectric.com





CONFIDENTIALITY NOTICE: The information contained in this electronic mail transmission is CONFIDENTIAL, and it may qualify as material protected pursuant to the Texas Uniform Trade Secrets Act, the New Mexico Uniform Trade Secrets Act, or other laws. If you are not the intended recipient, please destroy or delete this message and any attachments and immediately notify the sender.

From: Mark Murray [<mailto:mm@gandpland.com>]
Sent: Wednesday, December 03, 2014 10:13 AM
To: Westberg, Mary Ann
Cc: Mel Apachee; Mark Apachee; Matthew Apachee
Subject: 12/5 Meeting Agenda

Good morning Mary Ann

We put together a draft agenda for Friday's meeting. Let me know if there are any additional items you would like included in the agenda. Thanks!

Best Regards,
Mark Murray
562-505-5391

From: Paulk, Ryan R
To: Rodriguez, David
Subject: FW: Capitalizable Land and Land Rights Costs
Date: Monday, November 03, 2014 3:30:00 PM
Attachments: 




FYI, we can discuss tomorrow. I guess Barbara is mentioning the Isleta ROW renewal may be capital... I will try to get some more information on this so we are all clear.

Ryan R. Paulk, P.E. | El Paso Electric Company
Manager, Land Management
P O Box 982 | El Paso, Texas 79960
100 N Stanton | Loc 127 | El Paso, TX 79901
T (915) 521-4427 | C (915) 319-9144 | F (915) 543-4073
ryan.paulk@epelectric.com

CONFIDENTIALITY NOTICE: The information contained in this electronic mail transmission is CONFIDENTIAL, and it may qualify as material protected pursuant to the Texas Uniform Trade Secrets Act, the New Mexico Uniform Trade Secrets Act, or other laws. If you are not the intended recipient, please destroy or delete this message and any attachments and immediately notify the sender.

From: Torres, Barbara J
Sent: Monday, November 03, 2014 10:53 AM
To: Westberg, Mary Ann
Cc: Paulk, Ryan R
Subject: Capitalizable Land and Land Rights Costs

Mary Ann, you can find the authorization form under "Financial Systems & Budgeting" / Workorders / Requesting a Capital Workorder. Take a stab at completing it, forward the populated form to plantaccounting@epelectric.com and we'll initiate it upon receipt.

Jump to Department	Documents
Financial Systems & Budgeting	
Financial Systems & Budgeting	Welcome to Financial Systems & Budgeting
Financial Systems & Budgeting Pages	For Capital Workorders please open the Capital request and forward the request to Plant Accounting LOC 114
Account Structure	Requesting a Capital Workorder:
AFRM	
Budgets & Control (O&M)	For O&M Workorders and/or projects please sub completed O&M Workorder/Project Authorization request and save it to your local drive so it can be submitted. If you have any questions please contact Financial Systems LOC 117 .
O&M Budget Instructions	
Budget Coordinators	Requesting an O&M Workorder:
Expense Types	
Closing Schedule	Requesting an O&M Project:
Charging Cost Center Listings	
Workorders	
O&M Budget FAQ's	
O&M Training Material	

For future reference (this is directly off of the internet FERC site, "Uniform System of Accounts", Instruction No. 9); the amounts allowed to be capitalized for land and land rights are detailed below:

http://www.ferc.gov/enforcement/acct-matts/usofa.asp FERC: Uniform System of A...

View Favorites Tools Help

LIBRARY | STAFF VIEWER | STUDENT

FERC  **Federal Energy Regulatory Commission**

Enter Search Term(s):

ABOUT MEDIA DOCUMENTS & FILINGS INDUSTRIES LEGAL RESOURCES MARKET OVERSIGHT ENFORCEMENT CAREERS CONTACT

Investigations
Self Reports
Audits
Accounting Matters
Browse by Topic
Uniform System of Accounts
Accounting Rulemakings
Accounting Guidance
Accounting Releases
Interest Rates
Enforcement Resources
Compliance
Reliability
Prohibition of Energy Market Manipulation
Notices of Alleged Violations
Civil Penalties
Staff Guidance

Enforcement >> Accounting Matters >> **Uniform System of Accounts**

Uniform System of Accounts

February 20, 2014 - FERC Staff to Convene Workshop on Third-Party Provision of Reactive Supply and Voltage Control and Regulation and Frequency Response Services on April 22, 2014 [Notice](#) [PDF](#) [Event Details](#)

February 20, 2014 - Item E-1: FERC Clarifies Rule for Sale of Ancillary Services, Reporting for Electric Storage Technologies [Order No. 784-A](#) [PDF](#)

July 18, 2013 - Item E-22: FERC revises rule for Sale of Ancillary Services, Reporting for Electric Storage Technologies [Order No. 784](#) [PDF](#)

Electric public utilities & licensees, natural gas pipeline companies, oil pipeline companies, and centralized service companies within FERC jurisdiction are required to maintain their books and records in accordance with the Commission's Uniform System of Accounts (USofA). The USofA provides basic account descriptions, instructions, and accounting definitions that are useful in understanding the information reported in the Annual Report Form Nos. 1, 1-F, 2, 2A, 8, and 80, and Quarterly Report Form Nos. 3Q and 8Q. Hard copies of all four systems of accounts are available from the U.S. Government Printing Office. Ask for Code of Federal Regulations, Title 18, Conservation of Power and Water Resources, Parts 1-399, Revised as of April 1 of the current year. The toll-free telephone number is 1-866-512-1800 or in the DC area at 202-512-1800. They can also be purchased online at <http://bookstore.gpo.gov/> [GPO](#)

Click on the categories below to view additional information:

[Electric](#) [Gas](#) [Oil](#) [Centralized Service](#)

USofA

Provides basic account descriptions and accounting definitions that are useful in understanding the information reported in the [Annual Report Form No. 1](#), [Annual Report Form No. 1-F](#), and [Quarterly Report Form No. 3-Q](#).

[Readings](#) [PDF](#)
[Electric Uniform System of Accounts](#) [PDF](#)

(8) Provisions shall be made for amortizing amounts earned in the accounts for limited-term interest in land so as to apportion equitably the cost of each interest over the life thereof. (See Account 111, Accumulated Provision for Amortization of Electric Utility Plant, and Account 404, Amortization of Limited-Term Electric Plant.)

(9) The items of cost to be included in the accounts for land and land rights are as follows:

(i) Bulkheads, buried, not requiring maintenance or replacement;

(ii) First cost of acquisition including mortgages and other liens assumed (but not subsequent interest thereon);

(iii) Condemnation proceedings, including court and counsel costs;

(iv) Consents and abutting damages;

(v) Conveyancers and notaries' fees;

(vi) Fees, commissions, and salaries to brokers, agents, and other in connection with the acquisition of the land or land rights;

(vii) Leases, cost of voting upon purchase to secure possession of land;

(viii) Removing, relocating, or reconstructing property of others, such as buildings, highways, railroads, bridges, cemeteries, churches, telephone and power lines, etc., in order to acquire quiet possession;

(ix) Retaining walls unless identified with structures;

(x) Special assessments levied by public authorities for public improvements on the basis of benefits for new roads, new bridges, new sewers, new curbing, new pavements, and other public improvements, but not taxes levied to provide for the maintenance of such improvements;

(xi) Surveys in connection with the acquisition, but not amounts paid for topographical surveys and maps where such costs are attributable to structures or plant equipment erected or to be erected or installed on such land;

(xii) Taxes assumed, accrued to date of transfer of title;

(xiii) Title, examining, clearing, insuring, and registering in connection with the acquisition and defending against claims relating to the period prior to the acquisition;

(xiv) Appraisals prior to closing title;

(xv) Cost of dealing with distributees or legatees residing outside of the state or country, such as recording power of attorney, recording will or exemplification of will, recording satisfaction of state tax;

(xvi) Filing satisfaction of mortgage;

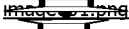


(xvii) Documentary stamps;

(xviii) Photographs of property at acquisition;

(xix) Fees and expenses incurred in the acquisition of water rights and grants;

Barbara J. Torres | El Paso Electric Company
Principal Plant Accountant
P O Box 982 | El Paso, Texas 79960
100 N. Stanton | El Paso, Texas 79901
T (915) 543-2275 | F (915) 521-4772
barbara.torres@epelectric.com

CONFIDENTIALITY NOTICE: The information contained in this electronic mail transmission is CONFIDENTIAL, and it may qualify as material protected pursuant to the Texas Uniform Trade Secrets Act, the New Mexico Uniform Trade Secrets Act, or other laws. If you are not the intended recipient, please destroy or delete this message and any attachments and immediately notify the sender.

From: Westberg, Mary Ann
To: Paulk, Ryan R; Monteros, Daniel J; Christianson, Jessica
Subject: FW: El Paso Electric Contact
Date: Friday, November 13, 2015 1:11:31 PM
Attachments: 



Jessica

I agree with you! Have not received a response from Ryan yet; however, I cannot imagine Ryan not agreeing with the decision. Think it is well worth doing it now.

Mary Ann

Mary Ann Westberg, SRWA | El Paso Electric Company
Principal Land Management
P O Box 910 | Las Cruces, New Mexico 88004
555 South Compress Road, Las Cruces, New Mexico 88005
T (575) 523-3682 | C (575) 644-3751 | F (575) 523-3637
maryann.westberg@epelectric.com

CONFIDENTIALITY NOTICE: The information contained in this electronic mail transmission is CONFIDENTIAL, and it may qualify as material protected pursuant to the Texas Uniform Trade Secrets Act, the New Mexico Uniform Trade Secrets Act, or other laws. If you are not the intended recipient, please destroy or delete this message and any attachments and immediately notify the sender.

From: Christianson, Jessica
Sent: Friday, November 13, 2015 12:59 PM
To: Westberg, Mary Ann
Subject: Fwd: El Paso Electric Contact

Mary Ann-

Here it is. I think we go with it.

Let me know.

Thanks,

Sent from my iPhone

Begin forwarded message:

From: Matt Bandy <mbandy@swca.com>
Date: November 13, 2015 at 12:36:14 PM MST
To: "Christianson, Jessica" <Jessica.Christianson@epelectric.com>
Subject: RE: El Paso Electric Contact

Hi, Jessica –

I pulled the numbers together Looks like it will be \$19,874 for biological and cultural surveys and reports for your ROW + buffer through Pueblo of Isleta lands (9 linear miles). This includes applicable NM tax. These reports will be sufficient to support an EA or whatever other NEPA compliance you need to do.

Please let me know ASAP if you want us to do this. As we discussed, we will be out there Monday and Tuesday of next week. We have access arranged with the Pueblo and are ready to go. I need to know as soon as possible so we can plan the appropriate crew size.

Thanks!

--

Matthew Bandy, Ph.D. | Principal - Albuquerque / Carlsbad / Durango
SWCA Environmental Consultants
5647 Jefferson St. NE, Albuquerque, NM 87109
P 505.254.1115 | M 505.552.2724 | mbandy@swca.com

cid:3418635841_271078



Visit Our Website: <http://www.swca.com>



From: Christianson, Jessica [<mailto:Jessica.Christianson@epelectric.com>]
Sent: Thursday, November 12, 2015 4:00 PM
To: Matt Bandy
Subject: Fwd: El Paso Electric Contact

Hey Matt:

Just got the below message from Clean Line. Sounds like maybe we can make something work. Are you around in the morning? Would like to get a cost if we could and talk through it.

Thanks,

Jessica

Sent from my iPhone

Begin forwarded message:

From: Hank Seltzer <HSeltzer@cleanlineenergy.com>

Date: November 12, 2015 at 3:55:29 PM MST

To: "Christianson, Jessica" <Jessica.Christianson@epelectric.com>

Cc: Jason Thomas <JThomas@cleanlineenergy.com>

Subject: RE: El Paso Electric Contact

Sounds good. As of now, they are tentatively planning to meet a rep. from the Pueblo on site and begin work at 8:00am Monday morning.

Hank

From: Christianson, Jessica [<mailto:Jessica.Christianson@epelectric.com>]

Sent: Thursday, November 12, 2015 4:53 PM

To: Hank Seltzer <HSeltzer@cleanlineenergy.com>

Cc: Jason Thomas <JThomas@cleanlineenergy.com>

Subject: Re: El Paso Electric Contact

Than you Hank.

I'm on the road today. Will call SWCA in the morning.

Will keep you posted.

Thanks again,

Jessica

Sent from my iPhone

On Nov 12, 2015, at 9:27 AM, Hank Seltzer
<HSeltzer@cleanlineenergy.com> wrote:

Jessica,

We confirmed this morning with the Pueblo that survey crews can access the Pueblo's land beginning next week, 11/16. I am helping coordinate the exact start date and time, but I wanted you to be aware that the Pueblo was amenable to SWCA completing survey work for our ROW and El Paso's adjacent ROW during next week's surveys. I've asked SWCA to confirm this with you independently to make sure you're still OK with this approach.

Please let me know if you have any questions.

Thanks,

Hank

Hank Seltzer

CLEAN LINE ENERGY PARTNERS LLC
Nashville, Tennessee

CELL 615.218.6124
FAX 832.319.6311
hseltzer@cleanlineenergy.com
WWW.CLEANLINEENERGY.COM

From: Jason Thomas
Sent: Thursday, November 05, 2015 2:47 PM
To: Christianson, Jessica
<Jessica.Christianson@epelectric.com>
Cc: Hank Seltzer <HSeltzer@cleanlineenergy.com>
Subject: RE: El Paso Electric Contact

Jessica, we were unable to schedule something next week with the Pueblo. We are now looking at the week of 11/16.

Hank Seltzer (who is on my team here at Clean Line) is copied on this message. He will be working out the details on this project going forward. Please coordinate with him and he'll keep me in the loop.

Regards,
Jason

Jason Thomas

CLEAN LINE ENERGY PARTNERS LLC
1001 MCKINNEY, SUITE 700
HOUSTON, TX 77002

TEL 832-319-6372
CELL 713-805-6840
FAX 832-319-6311

From: Christianson, Jessica

[<mailto:Jessica.Christianson@epelectric.com>]

Sent: Friday, October 30, 2015 6:06 PM

To: Jason Thomas <JThomas@cleanlineenergy.com>

Subject: RE: El Paso Electric Contact

Understood.

Thank you for the update. I had spoken to our project team and they are on board with an arrangement, should we be able to make one, to coordinate the survey. We don't reasonably expect to formally "catch-up" process-wise with you but if anything changes we'll plan to keep in contact.

Thanks again,

<[image002.jpg](#)>

Jessica Christianson, PWS, LEED AP |
[El Paso Electric Company](#)
Manager, Environmental
P.O. Box 982 | El Paso, Texas 79960
T: (915) 351.4258 | C: (915) 487.1262
jessica.christianson@epelectric.com

CONFIDENTIALITY NOTICE: The information contained in this electronic mail transmission is CONFIDENTIAL, and it may qualify as material protected pursuant to the Texas Uniform Trade Secrets Act, the New Mexico Uniform Trade Secrets Act, or other laws. If you are not the intended recipient, please destroy or delete this message and any attachments and immediately notify the sender.

From: Jason Thomas [<mailto:JThomas@cleanlineenergy.com>]

Sent: Friday, October 30, 2015 3:24 PM

To: Christianson, Jessica

Subject: RE: El Paso Electric Contact

Jessica, I just wanted to provide a quick update. Sorry I haven't contacted you; I was at APLIC Fall meeting this week.

We haven't heard back from our contact at the Pueblo since last Friday, though we have tried twice. If we don't hear from them by Wednesday afternoon, we're probably going to postpone.

SWCA is aware we're trying to coordinate the two surveys

simultaneously, but we haven't had a chance to make the Pueblo aware of those plans. If they seem reticent, we're probably going to go forward with our surveys as soon as we can get them scheduled.

Thanks
Jason

From: Jason Thomas
Sent: Friday, October 23, 2015 3:42 PM
To: 'Christianson, Jessica'
<Jessica.Christianson@epelectric.com>
Subject: RE: El Paso Electric Contact

Got it, thanks. We're contacting the Pueblo today.

Jason Thomas

CLEAN LINE ENERGY PARTNERS LLC
1001 MCKINNEY, SUITE 700
HOUSTON, TX 77002

TEL 832-319-6372
CELL 713-805-6840
FAX 832-319-6311

From: Christianson, Jessica
[<mailto:Jessica.Christianson@epelectric.com>]
Sent: Friday, October 23, 2015 3:20 PM
To: Jason Thomas <JThomas@cleanlineenergy.com>
Subject: El Paso Electric Contact

Hi Jason:

Appreciate the call this afternoon and your efforts to collaborate on the cultural surveys across the Pueblo. For confirmation purposes, I did review our existing easement and it is a 100 ft width.

All my contact info is below. Hope we can work something out.

Have a great weekend.

<image002.jpg>

Jessica Christianson, PWS, LEED AP |
El Paso Electric Company
Manager, Environmental
P O Box 982 | El Paso, Texas 79960
T (915) 351 4258 | C (915) 487 1262
jessica.christianson@epelectric.com

CONFIDENTIALITY NOTICE: The information contained in this electronic mail transmission is CONFIDENTIAL, and it may qualify as material protected pursuant to the Texas Uniform Trade Secrets Act, the New Mexico Uniform Trade Secrets Act, or other laws. If you are not the intended recipient, please destroy or delete this message and any attachments and immediately notify the sender.

From: [Boomer, John](#)
To: [Paulk, Ryan R](#); [Westberg, Mary Ann](#); [Monteros, Daniel J](#)
Subject: FW: El Paso Electric/Isleta Pueblo
Date: Tuesday, September 08, 2015 11:55:21 AM

Here is the contact information for the 2 attorneys at Miller Stratvert helping us with the Isleta Pueblo renewal.

Please send each of them your contact information. I would do it, but I might not get titles current.

Thanks

John

From: Kirk R. Allen [mailto:kallen@mstlaw.com]
Sent: Thursday, September 03, 2015 6:07 PM
To: Boomer, John
Cc: Kirk R. Allen; Stephen B. Waller
Subject: El Paso Electric/Isleta Pueblo

John

Good talking with you today. Here is our contact information:

Kirk Allen - Attorney

THE LAW OFFICES OF
MILLER STRATVERT
Strength • Service • Solutions

kallen@mstlaw.com
500 Marquette Ave N W
Suite 1100
Albuquerque, NM 87102
(main) 505-842-1950
(direct) 505-842-4781
(cell) 505-228-1642

Website
<http://www.mstlaw.com>

Stephen B. Waller

swaller@mstlaw.com

505-842-4723—direct

From: [Westberg, Mary Ann](#)
To: [Paulk, Ryan R](#)
Subject: FW: EPE - G&P Land - Meeting recap from Dec. 5, 2014
Date: Tuesday, December 09, 2014 10:51:48 AM

Ryan

I caught the 235KV also and sent a note to Mark to correct.

Also sent Mark (both), Mel & Matthew your email and Jessica's email address and contact info.

Spoke with Martha and she felt fairly sure the original maps and Exhibit A-1 and A-2 were in the mylar map drawer...or the line books in LM. Have Maritza checking in the map drawer for me. Hopefully, IF we can find the original map, the actual Term Date will be visible.

Mary Ann

Mary Ann Westberg, SRWA | [El Paso Electric Company](#)
Principal, Land Management Representative
P.O. Box 910 , Las Cruces, NM 88004
T: (575) 523-3682 C: (575) 644-3751
Maryann.westberg@epelectric.com

CONFIDENTIALITY NOTICE: The information contained in this electronic mail transmission is CONFIDENTIAL, and it may qualify as material protected pursuant to the Texas Uniform Trade Secrets Act, the New Mexico Uniform Trade Secrets Act, or other laws. If you are not the intended recipient, please destroy or delete this message and any attachments and immediately notify the sender.

From: Paulk, Ryan R
Sent: Tuesday, December 09, 2014 10:26 AM
To: Mark Apachee; Westberg, Mary Ann; Christianson, Jessica
Cc: Mel Apachee; Matthew Apachee; Mark Murray
Subject: RE: EPE - G&P Land - Meeting recap from Dec. 5, 2014

Mark,

Hello. I have reviewed the meeting notes and have a few comments.

The title says 235kV line, it is a 345 kV line (correctly written further in the notes)

Also, it was mentioned that El Paso Electric will look through its records to locate a project file for G&P representatives to review.

When Mary Ann has completed her research, she will advise of what we have found.

Thank you for the concise notes.

Lastly, I believe that you forgot the "r" from Jessica's last name in her e-mail and it was not delivered to her. I have copied her on this reponse.

Ryan R. Paulk, P.E. | El Paso Electric Company
Manager, Land Management
P O Box 982 | El Paso, Texas 79960
100 N Stanton | Loc 127 | El Paso, TX 79901
T (915) 521-4427 | C (915) 319-9144 | F (915) 543-4073
ryan.paulk@epelectric.com

CONFIDENTIALITY NOTICE: The information contained in this electronic mail transmission is CONFIDENTIAL, and it may qualify as material protected pursuant to the Texas Uniform Trade Secrets Act, the New Mexico Uniform Trade Secrets Act, or other laws. If you are not the intended recipient, please destroy or delete this message and any attachments and immediately notify the sender.

From: Mark Apachee [<mailto:timmyapachee@hotmail.com>]
Sent: Monday, December 08, 2014 12:56 PM
To: Westberg, Mary Ann; Paulk, Ryan R; jessica.chistianson@epelectric.com
Cc: Mel Apachee; Matthew Apachee; Mark Murray
Subject: EPE - G&P Land - Meeting recap from Dec. 5, 2014

I have attached a recap of the meeting between G&P Land and El Paso Electric Company. Meeting was held in Las Cruces, New Mexico on December 5, 2014 in regards to the proposed 235 kV Transmission Line Right-of-Way Renewal across Isleta Pueblo Lands. If you have any other questions or concerns please call or email myself or one of the G&P team members.

Mark Apachee

Right of Way Agent
928.245.9690

From: [Westberg, Mary Ann](#)
To: [Paulk, Ryan R](#); [Monteros, Daniel J](#)
Subject: FW: EPE West Mesa-Arroyo 345 kV Transmission Line - Request for Information
Date: Wednesday, August 26, 2015 10:50:51 AM
Attachments: [BIA Evidence of Authority Form.pdf](#)
[RW Appn signed.pdf](#)
[Application for Permission to Survey \(ROE\).pdf](#)

Ryan

Information before our conference call today @ 1:30 with Tetra Tech, G&P Land, Mark Murray:

Received this email from Mel yesterday evening requesting the documents he needs for filing the ROW application.

Question regarding the form Evidence of Authority of Officers, referring to **"application"** for officers signature. Typically, applications are not signed by an officer.....the final GRANT of RW is executed by an officer (Rocky).

The RW Application Form, and Application for Permission to Survey (ROE), also requires **"applicant"** signature. In my opinion, applicant does not need to be Rocky. Going to Rocky for all of these application forms does not seem reasonable. Your thoughts? We will need to clarify.

I will track down copy of NM Sate Business License and Articles of Incorporation.

Mel also requested, via phone, a letter addressed to BIA & Pueblo authorizing G&P Land, and Tetra Tech, to represent EPE in the renewal process. We previously provided Letter of Intent to BIA & Pueblo authorizing G&P Land to conduct research/consultation in regards to the RW renewal; however, letter did not include Tetra Tech at the time. We will need to draft up new letter, including both, soon .

When formal RW application is ready for submittal, we will need direction on the amount of deposit(\$\$\$) to BIA.

Thanks,
Mary Ann

Mary Ann Westberg, SRWA | [El Paso Electric Company](#)
Principal Land Management
P.O. Box 910 | Las Cruces, New Mexico 88004
555 South Compress Road, Las Cruces, New Mexico 88005
T: (575) 523-3682 | C: (575) 644-3751 | F: (575) 523-3637
maryann.westberg@epelectric.com

CONFIDENTIALITY NOTICE: The information contained in this electronic mail transmission is CONFIDENTIAL, and it may qualify as material protected pursuant to the Texas Uniform Trade Secrets Act, the New Mexico Uniform Trade Secrets Act, or other laws. If you are not the intended recipient, please destroy or delete this message and any attachments and immediately notify the sender.

From: Mel Apachee [mailto:melapachee@hotmail.com]
Sent: Tuesday, August 25, 2015 8:45 PM
To: Westberg, Mary Ann; carly.rowe@tetrattech.com
Cc: Mark Pickering
Subject: EPE West Mesa-Arroyo 345 kV Transmission Line - Request for Information

Mary Ann,

Last week, G&P Land received the "Notice to Proceed" regarding the above referenced project per the outlined Phase I - Task Assignments for the right-of-way renewal. Therefore, I am requesting information and documents from El Paso Electric (EPE) as follows:

- NM State Business License and/or Certification
- Article of Incorporation and/or Bylaws
- Evidence of Authority of Officers to Execute Papers (BIA Form is attached to be completed by EPE)

The above information is needed to prepare the formal Right-of-Way Application package with supporting documents to be submitted to BIA Southern Pueblos Agency BIA SPA) and Isleta Pueblo. As previously explained, G&P Land will prepare proper paperwork for EPE's review and approval before submitting any information or documents to BIA SPA and Isleta Pueblo.

Also for future consideration, per CFR requirement BIA SPA may require EPE to deposit the estimated compensation for the right-of-way renewal when submitting the formal Right-of-Way Application.

Any questions, please contact at 928-551-2871 or by email.

Mel Apachee, Project Manager
G&P Land - Representing El Paso Electric Company

From: [Westberg, Mary Ann](#)
To: [Paulk, Ryan R](#); [Monteros, Daniel J](#); [Christianson, Jessica](#); [Martin, Kenton](#)
Cc: [Boomer, John](#); [Kirk R. Allen \(kallen@mstlaw.com\)](#)
Subject: FW: First initial meeting with Isleta Tribal Council
Date: Thursday, January 07, 2016 12:36:29 PM

Good afternoon,

Just received this email from David Mielke, Sonosky, Chambers, Sachse, Mielke & Brownell, LLP, notifying us of a proposed meeting time with the Isleta Pueblo Tribal Council for Wednesday, January 27, at 10:30am (followed by lunch?). Please let me know IF this will work for you and who, on behalf of EPE, will be attending.

Thanks,

Mary Ann

Mary Ann Westberg, SRWA | [El Paso Electric Company](#)
Principal Land Management
P.O. Box 910 | Las Cruces, New Mexico 88004
555 South Compress Road, Las Cruces, New Mexico 88005
T: (575) 523-3682 | C: (575) 644-3751 | F: (575) 523-3637
maryann.westberg@epelectric.com

CONFIDENTIALITY NOTICE: The information contained in this electronic mail transmission is CONFIDENTIAL, and it may qualify as material protected pursuant to the Texas Uniform Trade Secrets Act, the New Mexico Uniform Trade Secrets Act, or other laws. If you are not the intended recipient, please destroy or delete this message and any attachments and immediately notify the sender.

From: David C. Mielke [mailto:DMielke@abqsonosky.com]

Sent: Thursday, January 07, 2016 11:44 AM

To: Westberg, Mary Ann

Subject: RE: meeting with Isleta TC

Correction, I see that they have proposed scheduling me at 9:30, but have proposed 10:30 for you and your folks, perhaps followed by lunch.

From: David C. Mielke

Sent: Thursday, January 07, 2016 11:42 AM

To: 'maryann.westberg@epelectric.com' <maryann.westberg@epelectric.com>

Subject: meeting with Isleta TC

Hi Maryann, the Council Secretary has penciled us in for Wednesday, 1/27, at 9:30 am. Please let me know if that date and time are convenient. If not, I'm sure we can get another date or time set up pretty quickly. I look forward to meeting you.

Regards, Dave

David C. Mielke

Sonosky, Chambers, Sachse, Mielke & Brownell, LLP

500 Marquette Avenue NW, Suite 660

Albuquerque, NM 87102

(505) 247-0147

(505) 843-6912 fax

-----NOTICE -----

This message is intended solely for the use of the addressee and may contain information that is privileged, confidential, and exempt from disclosure under applicable law. If you are not the

addressee, you are hereby notified that any use, distribution, or copying of this message is strictly prohibited. If you received this message in error, please notify us by reply e-mail or by telephone (call us collect at the number listed below) and immediately delete this message and any and all of its attachments. Thank you.

From: Westberg, Mary Ann
To: Paulk, Ryan R
Cc: Christianson, Jessica
Subject: FW: Introduction Meeting
Date: Monday, February 23, 2015 8:20:54 AM

Ryan

Spoke with Jessica this morning about this Give me a call when you have some time or Jessica will try and catch you today on this We are both on the same opinion that before we go forward with more, we should have a sit down to discuss our plans for the 2nd phase of this project We are complete on the first phase of the information seeking (\$\$\$\$) on the original scope of work, and invoices paid Knowing that we will most likely move forward with Mark either in part or full, and that Environmental is a big component, think we need to have that 2nd phase sit down meeting first and discuss the environmental steps then

Were you able to have any conversation with Clay?

Thanks Ryan,
Mary Ann

Mary Ann Westberg, SRWA | El Paso Electric Company
Principal, Land Management Representative
P O Box 910 , Las Cruces, NM 88004
T (575) 523-3682 C (575) 644-3751
Maryann.westberg@epelectric.com

CONFIDENTIALITY NOTICE The information contained in this electronic mail transmission is CONFIDENTIAL, and it may qualify as material protected pursuant to the Texas Uniform Trade Secrets Act, the New Mexico Uniform Trade Secrets Act, or other laws If you are not the intended recipient, please destroy or delete this message and any attachments and immediately notify the sender

-----Original Message-----

From: Christianson, Jessica
Sent: Saturday, February 21, 2015 12:08 PM
To: Paulk, Ryan R, Westberg, Mary Ann
Subject: FW: Introduction Meeting

Ryan and Maryann

I received the folling request from Mark Murray and also a phone call He would like to discuss the next steps with respect to the Enviornmental Analysis for the Isleta renewal as well as introduce us to what I assume is his preferred consultant in Tetrattech

He would like to do it Monday afternoon, March 2, 2015, here in El Paso

Two questions- Would you like to be involved in this meeting? - it makes sense to me that you should be there and Does March 2 work for you? Apparently the morning of the 3rd is also an option, but Mark prefers the 2nd

Please let me know

Thanks,

Jessica

-----Original Message-----

From Mark Murray [mailto:murray_53@hotmail.com]

Sent Thursday, February 19, 2015 12:42 PM

To Christianson, Jessica

Subject Introduction Meeting

Hi Jessica

I wanted to follow up with you regarding an introduction of an environmental firm I mentioned at our kick off meeting a few months ago. As you know there will be an environmental component as part of the renewal of the easement for the 345kv line across the Isleta Pueblo. With that, I would like you to meet Larry Keith with Tetra Tech. Tetra Tech has done a significant amount of environmental work for me and on Indian lands.

Would you be free for a meeting on Monday (3-2) afternoon or Tuesday (3-3) morning for a short meeting at your offices in El Paso?

Best Regards,
Mark Murray
562-505-5391

From: [Westberg, Mary Ann](#)
To: [Paulk, Ryan R](#); [Monteros, Daniel J](#)
Cc: [Christianson, Jessica](#)
Subject: FW: Isleta Pueblo Easement Renewal - West Mesa -Arroyo 345kV Transmission Line
Date: Thursday, June 18, 2015 1:11:57 PM
Attachments: [Revised Isleta Pueblo Easement Renewal 650618.pdf](#)

Here is the revised scope of work from Larry, Tetra Tech. I have not had a chance to look over yet; however, wanted to forward on to you as soon as possible. Will review and respond back to you with any comments I have.

Mary Ann

Mary Ann Westberg, SRWA | [El Paso Electric Company](#)
Principal, Land Management Representative
P.O. Box 910 , Las Cruces, NM 88004
T: (575) 523-3682 C: (575) 644-3751
Maryann.westberg@epelectric.com

CONFIDENTIALITY NOTICE: The information contained in this electronic mail transmission is CONFIDENTIAL, and it may qualify as material protected pursuant to the Texas Uniform Trade Secrets Act, the New Mexico Uniform Trade Secrets Act, or other laws. If you are not the intended recipient, please destroy or delete this message and any attachments and immediately notify the sender.

From: Keith, Larry [<mailto:larry.keith@tetrattech.com>]
Sent: Thursday, June 18, 2015 12:59 PM
To: Westberg, Mary Ann
Subject: RE: Isleta Pueblo Easement Renewal - West Mesa -Arroyo 345kV Transmission Line

Hi Mary Ann,

I've revised our scope of work to include the modifications you requested, and tweaked our cost to include the self-defined scope for the environmental requirements. This also includes adding Mark Murray with CobbFendley as a subcontractor (the previous fees for G&P Land were reduced slightly as Mark was included in their cost originally).

Please share this with the others on your team.

Let me know if you need anything else to get this work underway. We look forward to working with El Paso Electric!

Regards,
Larry

Larry Keith
Vice President | Power Delivery & Energy Services
Office: 303.291.6260 | Direct: 303.291.6291 | Cell: 303.990.2616

larry.keith@tetrattech.com

Tetra Tech RME | Energy Programs

216 16th Street, Suite 1500, Denver, Colorado 80202 | www.tetrattech.com

PLEASE NOTE This message, including any attachments, may include confidential and/or inside information. Any distribution or use of this communication by anyone other than the intended recipient is strictly prohibited and may be unlawful. If you are not the intended recipient, please notify the sender by replying to this message and then delete it from your system.



Think Green - Not every email needs to be printed.

From: Westberg, Mary Ann [mailto:maryann.westberg@epelectric.com]

Sent: Tuesday, June 16, 2015 2:32 PM

To: Keith, Larry

Subject: Isleta Pueblo Easement Renewal - West Mesa -Arroyo 345kV Transmission Line

Larry

Good Afternoon and good news! El Paso Electric Company (EPECo) would like to pursue Tetra Tech's Task Proposal dated April 17, 2015, referencing Task 1, Project Management; Task 2, Baseline & Resource Data Collection and Mapping; Task 5, Land Services and Negotiations. A request is proposed for slight modification to the initial tasks to include language as referenced in the original Scope of Work and Cost Proposal dated April 8, 2015. Modifications to include:

Task 1 Project Management

By-weekly conference calls for updates on progress, issues of concern and budget expenditures

Clarification on who, within the Tetra Tech and G & P Land team, will be responsible for the communication and progress of the tasks as referenced

Task 5 Land Services and Negotiations

Deliverables to include a well-defined scope for the environmental requirements (NEPA) to complete the project

El Paso Electric Company understands the necessity, and urgency, to move forward with an initial BIA meeting, presentation of EPECo's operation and maintenance plan, and environmental scope directive required for completion of the Isleta Pueblo easement renewal project. We look forward to receiving the modifications to the Task Proposal, expediting approval, and moving forward on this phase of the project as soon as possible.

Thank you for your patience with us. If you should have any questions, please feel free to contact either Ryan, Daniel, Jessica or myself.

Mary Ann

Mary Ann Westberg, SRWA | [El Paso Electric Company](http://www.epelectric.com)

Principal, Land Management Representative
P O Box 910 , Las Cruces, NM 88004
T (575) 523-3682 C (575) 644-3751
Maryann.westberg@epelectric.com

CONFIDENTIALITY NOTICE: The information contained in this electronic mail transmission is CONFIDENTIAL, and it may qualify as material protected pursuant to the Texas Uniform Trade Secrets Act, the New Mexico Uniform Trade Secrets Act, or other laws. If you are not the intended recipient, please destroy or delete this message and any attachments and immediately notify the sender.

From: [Westberg, Mary Ann](#)
To: [Paulk, Ryan R](#)
Subject: FW: Isleta Pueblo Easement Renewal - West Mesa -Arroyo 345kV Transmission Line
Date: Tuesday, June 16, 2015 2:30:24 PM

Ryan

I just explained to Daniel the importance, in my opinion, of the need to keep G & P Land (Mel, Mark & Matthew Apachee) on the Land Services Negotiations. They are more of our 'foot in the door' with the Pueblo and BIA than Mark Murray. Daniel agreed, after our discussion. Daniel was not in the first meetings we had with Mel Apachee and did not completely understand the relationship with G & P Land and the BIA/Pueblo.

On **Task 5** of the proposal, G&P is listed in parenthesis next to the **Land Services & Negotiations**. So, Daniel agreed to leave that in my email.

I changed email to include the other suggestions"would like to pursue", although I thought we had already agreed to accept the Tasks presented pending the slight modifications we requested. It's ok.....All the same to me.

Will send out to Larry now. Thanks!

Mary Ann

Mary Ann Westberg, SRWA | [El Paso Electric Company](#)
Principal, Land Management Representative
P.O. Box 910, Las Cruces, NM 88004
T: (575) 523-3682 C: (575) 644-3751
Maryann.westberg@epelectric.com

CONFIDENTIALITY NOTICE: The information contained in this electronic mail transmission is CONFIDENTIAL, and it may qualify as material protected pursuant to the Texas Uniform Trade Secrets Act, the New Mexico Uniform Trade Secrets Act, or other laws. If you are not the intended recipient, please destroy or delete this message and any attachments and immediately notify the sender.

From: Monteros, Daniel J
Sent: Tuesday, June 16, 2015 1:53 PM
To: Paulk, Ryan R; Westberg, Mary Ann
Subject: RE: Isleta Pueblo Easement Renewal - West Mesa -Arroyo 345kV Transmission Line

I would not tell Tetra Tech that we have agreed to accept their proposal until they have an official work order or P.O. from us. I also removed the reference to G&P Land, since we are looking at them teaming up with Mark Murray. See modifications below.

Daniel J. Monteros, PE | [El Paso Electric Company](#)

Supervisor – Land Management
P O Box 982 | El Paso, Texas 79960
T (915) 521-4491 | C (915) 487-0298 | F (915) 521-4716
daniel.monteros@epelectric.com

From: Paulk, Ryan R
Sent: Tuesday, June 16, 2015 1:35 PM
To: Westberg, Mary Ann; Monteros, Daniel J
Subject: RE: Isleta Pueblo Easement Renewal - West Mesa -Arroyo 345kV Transmission Line

Looks good to me.

Thanks.

Any comments Daniel?

Ryan R. Paulk, P.E. | El Paso Electric Company
Manager, Land Management
P O Box 982 | El Paso, Texas 79960
100 N Stanton | Loc 127 | El Paso, TX 79901
T (915) 521-4427 | C (915) 319-9144 | F (915) 543-4073
ryan.paulk@epelectric.com

CONFIDENTIALITY NOTICE: The information contained in this electronic mail transmission is CONFIDENTIAL, and it may qualify as material protected pursuant to the Texas Uniform Trade Secrets Act, the New Mexico Uniform Trade Secrets Act, or other laws. If you are not the intended recipient, please destroy or delete this message and any attachments and immediately notify the sender.

From: Westberg, Mary Ann
Sent: Tuesday, June 16, 2015 12:57 PM
To: Paulk, Ryan R; Monteros, Daniel J
Subject: Isleta Pueblo Easement Renewal - West Mesa -Arroyo 345kV Transmission Line

Before I send this off to Larry.....Comments?

Thanks,

Mary Ann

Larry

Good Afternoon and good news! El Paso Electric Company (EPECo) would like to pursue Tetra Tech's Task Proposal dated April 17, 2015, referencing Task 1, Project Management; Task 2, Baseline & Resource Data Collection and Mapping; Task 5, Land Services and Negotiations. A request is proposed for slight modification to the initial tasks to include language as referenced in the original Scope of Work and Cost Proposal dated April 8, 2015. Modifications include:

Task 1 Project Management

By-weekly conference calls for updates on progress, issues of concern and budget expenditures

Clarification on who, within the Tetra Tech and the land team, will be responsible for the communication and progress of the tasks as referenced

Task 5 Land Services and Negotiations

Deliverables to include a well-defined scope for the environmental requirements (NEPA) to complete the project

El Paso Electric Company understands the necessity, and urgency, to move forward with an initial BIA meeting, presentation of EPECo's operation and maintenance plan, and environmental scope directive required for completion of the Isleta Pueblo easement renewal project. We look forward to receiving the modifications to the Task Proposal, expediting approval, and moving forward on this phase of the project as soon as possible.

Thank you for your patience with us. If you should have any questions, please feel free to contact either Ryan, Daniel, Jessica or myself.

Mary Ann

Mary Ann Westberg, SRWA | El Paso Electric Company
Principal, Land Management Representative
P O Box 910, Las Cruces, NM 88004
T (575) 523-3682 C (575) 644-3751
Maryann.westberg@epelectric.com

CONFIDENTIALITY NOTICE: The information contained in this electronic mail transmission is CONFIDENTIAL, and it may qualify as material protected pursuant to the Texas Uniform Trade Secrets Act, the New Mexico Uniform Trade Secrets Act, or other laws. If you are not the intended recipient, please destroy or delete this message and any attachments and immediately notify the sender.

From: [Westberg, Mary Ann](#)
To: [Paulk, Ryan R](#)
Cc: [Monteros, Daniel J](#)
Subject: FW: Isleta Pueblo, BIA contacts
Date: Tuesday, October 06, 2015 4:02:54 PM
Attachments: [2015 Tribal Council Request Form.docx](#)

Ryan,

In response to Kirk's email, I was under the impression our approach was to set up an informal meet and greet with the Governor's office. I would think this approach with the Tribal Council comes later, after our meeting with the Governor's office. See paragraph at bottom of form. Did not think we were at a point yet to provide **11 copies** of relevant documents in a formal meeting!

Presentation to the Tribal Council is probably more in line with the PowerPoint that Tetra Tech was requesting from us; more significant details of who we are, our transmission line and requested information regarding the renewal process.

Think we need to discuss more tomorrow. Contacted Larry, Tetra Tech, this afternoon and he will be out of the office until Tuesday of next week. We will need to speak with him then.

Mary Ann

Mary Ann Westberg, SRWA | [El Paso Electric Company](#)
Principal Land Management
P.O. Box 910 | Las Cruces, New Mexico 88004
555 South Compress Road, Las Cruces, New Mexico 88005
T: (575) 523-3682 | C: (575) 644-3751 | F: (575) 523-3637
maryann.westberg@epelectric.com

CONFIDENTIALITY NOTICE: The information contained in this electronic mail transmission is CONFIDENTIAL, and it may qualify as material protected pursuant to the Texas Uniform Trade Secrets Act, the New Mexico Uniform Trade Secrets Act, or other laws. If you are not the intended recipient, please destroy or delete this message and any attachments and immediately notify the sender.

From: Kirk R. Allen [<mailto:kallen@mstlaw.com>]
Sent: Tuesday, October 06, 2015 2:56 PM
To: Westberg, Mary Ann
Cc: Boomer, John; Paulk, Ryan R; Kirk R. Allen; Stephen B. Waller; Loraine T. Ricci
Subject: RE: Isleta Pueblo, BIA contacts
Good Afternoon

I spoke with the Tribal Council's office today. The procedure they use to set up a meeting is a bit more formal than most Pueblos. They require the submission of a Tribal Council Agenda Request Form (attached). It is fairly straightforward. I think it is fine if the request comes either directly from El Paso Electric or from me as your representative. Please let me know how you would like to proceed or whether you have any questions.

Kirk

From: Westberg, Mary Ann [<mailto:maryann.westberg@epelectric.com>]
Sent: Friday, October 02, 2015 9:30 AM
To: Kirk R. Allen <kallen@mstlaw.com>
Cc: Boomer, John <John.Boomer@epelectric.com>; Paulk, Ryan R <ryan.paulk@epelectric.com>
Subject: Isleta Pueblo, BIA contacts

Good Morning,

Attached is the list of contacts provided to us by G&P Land. As discussed yesterday, we will rely on your direction for contact(s).

Thank you for time, and help, yesterday in providing a clearer approach for our next step to move forward on our renewal across Isleta Pueblo.

Have a great weekend.

Mary Ann

Mary Ann Westberg, SRWA | El Paso Electric Company
Principal Land Management
P O Box 910 | Las Cruces, New Mexico 88004
555 South Compress Road, Las Cruces, New Mexico 88005
T (575) 523-3682 | C (575) 644-3751 | F (575) 523-3637
maryann.westberg@epelectric.com

CONFIDENTIALITY NOTICE: The information contained in this electronic mail transmission is CONFIDENTIAL, and it may qualify as material protected pursuant to the Texas Uniform Trade Secrets Act, the New Mexico Uniform Trade Secrets Act, or other laws. If you are not the intended recipient, please destroy or delete this message and any attachments and immediately notify the sender.

From: [Christianson, Jessica](#)
To: [Paulk, Ryan R](#)
Cc: [Westberg, Mary Ann](#)
Subject: FW: NEPA information for ROW renewal--Isleta Pueblo/EPE
Date: Wednesday, June 21, 2017 3:45:20 PM
Attachments: [CULTURAL RESOURCES SURVEY FORM.doc](#)

Ryan:

Do you mind if I reach out to the BIA myself. I know Kirk was trying to be useful but the information he provided isn't totally applicable since we already have most of this data.

In the meantime, to assure we don't contradict any representations made to the pueblo throughout the negotiations and remain consistent in all project related correspondence can you provide brief answers to the following questions. I 'm guessing we probably already have some language from some other project documentation:

- Do we have a general project description we've be using?
- How have we described the proposed activity within the right of way?
- Have we previously talked about expected activities associated with either road maintenance or structure work (maintenance, repair, replacement)?
- Can Brandon put together the 1:24000 ROW map with the USGS topo baselayer as requested below? Our reports have map figures but not with the appropriate scale or base layer.

Thanks,

Jessica Christianson | [El Paso Electric Company](#)
Manager, Environmental
P.O. Box 982 | El Paso Texas, 79960
T: 915.351.4258 | C: 915.487.1262
Jessica.Christianson@epelectric.com



CONFIDENTIALITY NOTICE: The information contained in this electronic mail transmission is CONFIDENTIAL, and it may qualify as material protected pursuant to the Texas Uniform Trade Secrets Act, the New Mexico Uniform Trade Secrets Act, or other laws. If you are not the intended recipient, please destroy/delete this message and any attachments and immediately notify the sender.

From: Kirk R. Allen [mailto:kallen@mstlaw.com]

Sent: Friday, June 16, 2017 3:54 PM

To: Christianson, Jessica

Cc: Goldman, Jessica; Paulk, Ryan R; Westberg, Mary Ann; Kirk R. Allen; Loraine T. Ricci

Subject: NEPA information for ROW renewal--Isleta Pueblo/EPE

Jessica

I had a very productive conversation with Janelle Jersey. She is the Environmental Coordinator of the Southern Pueblos Agency of the Southwest Region of the BIA (Isleta is within their jurisdiction). I was able to explain the project and she said a categorical exclusion would be appropriate (hooray). In order for Janelle to initiate the NEPA process and the resulting exclusion, she needs the following information. We can send it to her electronically:

- A completed out cat-ex checklist. I have attached a form that can be filled out, along with a template for that form;
- A completed cultural resources survey request. I have attached the required form;

- A short biological memo with a current species list from the US Fish and Wildlife Service. If we need information on what the memo should cover or how to obtain the species list, we can contact their Wildlife Biologist, Lawrence Abeita, at (505) 563-3723.
- A map showing the route of the ROW. The underlying layer should be a topographic map. 1:24000 scale is best; if that is not possible it must be at a scale where Sections are still visible and identifiable.

We also need to send a hard copy of the information to the Agency Superintendent with a request to have a NEPA review completed. The address is: John E. Antonio, Sr., Superintendent; Southern Pueblos Agency; 1001 Indian School Rd., NW; Albuquerque, NM 87104.

Kirk

From: Westberg, Mary Ann
To: Paulk, Ryan R
Subject: FW: Project Kick Off Meeting
Date: Wednesday, November 19, 2014 10:42:45 AM
Attachments: 4919C923-1C68-4E10-9C82-6E4CE1221.png

Ryan

Mark and Mel are ready to go on the Isleta Project. Do you want to try and meet before Thanksgiving? Your calendar looks open on Tuesday the 25th. OR, would you prefer to wait until after Thanksgiving? Since Mark/Mel will be doing the traveling, we could probably leave that up to them.

We can wait and chat about it tomorrow during our LM meeting/lunch here.

Mary Ann

Mary Ann Westberg, SRWA | El Paso Electric Company
Principal, Land Management Representative
P O Box 910 , Las Cruces, NM 88004
T (575) 523-3682 C (575) 644-3751
Maryann.westberg@epelectric.com

CONFIDENTIALITY NOTICE: The information contained in this electronic mail transmission is CONFIDENTIAL, and it may qualify as material protected pursuant to the Texas Uniform Trade Secrets Act, the New Mexico Uniform Trade Secrets Act, or other laws. If you are not the intended recipient, please destroy or delete this message and any attachments and immediately notify the sender.

From: Mark Murray [mailto:mm@gandpland.com]
Sent: Tuesday, November 18, 2014 2:17 PM
To: Westberg, Mary Ann
Cc: Paulk, Ryan R; Mel Apachee
Subject: Re: Project Kick Off Meeting

Hi Mary Ann

Thanks for following up. We will standby for your recommendations on dates for the meeting. I know Thanksgiving is next week, so if we can't work something in before Thanksgiving, we can always look at dates after the holiday.

Please travel safe, and talk to you soon.