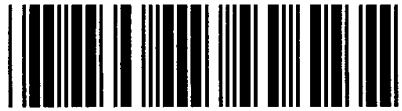




Control Number: 51923



Item Number: 4

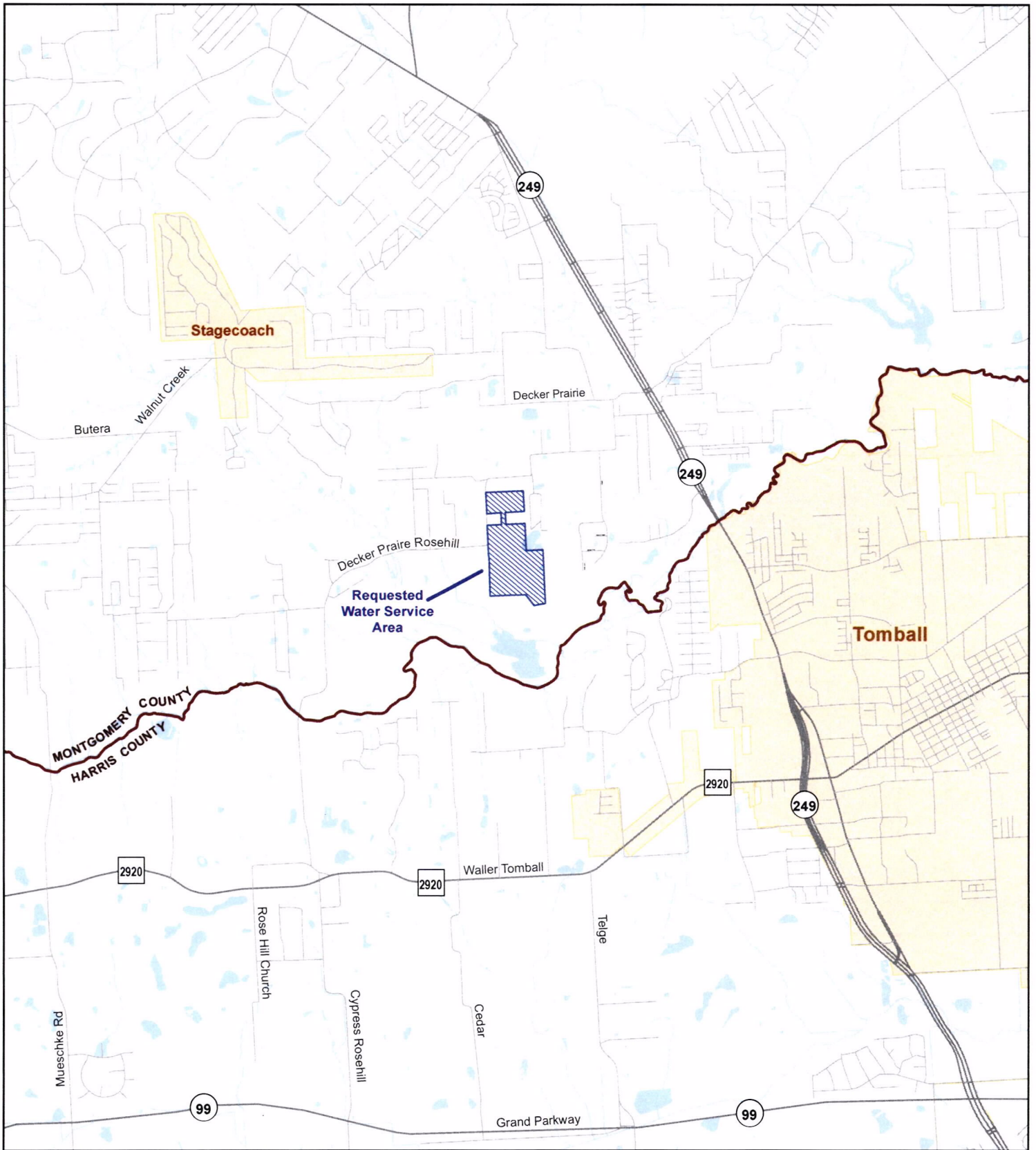
Addendum StartPage: 0

Quadvest LP

Docket 51923

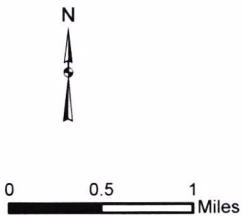
RECEIVED
2021 APR -5 AM 9:17
PUBLIC UTILITY COMMISSION
FILING CLERK

GIS digital data and PDFs of the required maps.



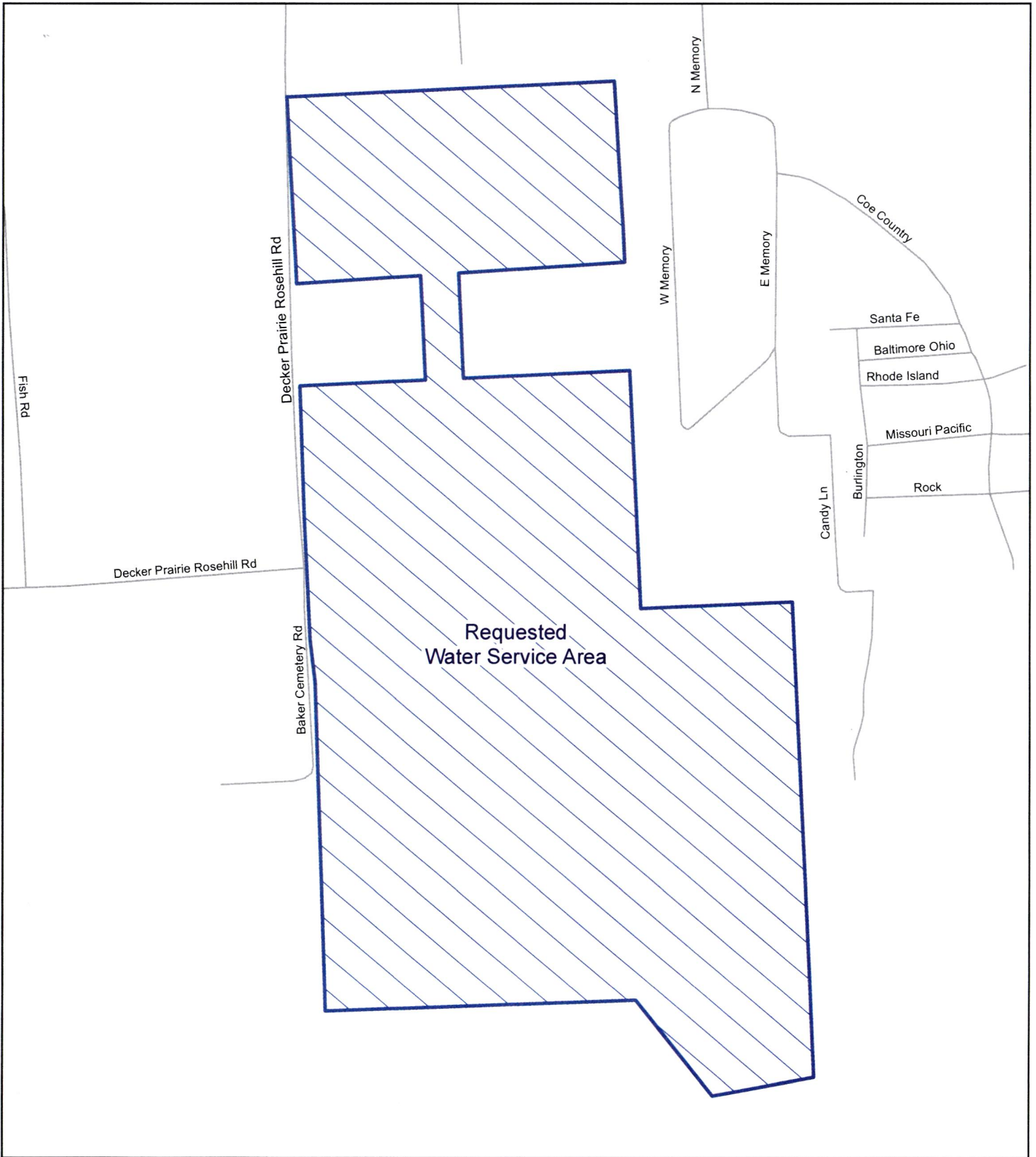
General Location Water

Quadvest, L.P.
 Application to Amend Water CCN No. 11612
 Montgomery County



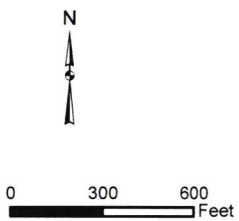
 Requested Water Service Area - approx. 175 acres

Map by: S. Burt, ASBGI
 Date: March 10, 2021
 Base: TxDOT Roadways
 Project: General Location Decker Farms Water



Water Detail Map on Imagery

Quadvest, L.P.
 Application to Amend Water CCN No. 11612
 Montgomery County



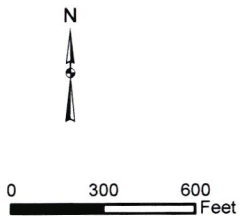
 Requested Water Service Area - approx. 175 acres

Map by: S. Burt, ASBGI
 Date: March 9, 2021
 Base: StratMap Transv2
 Project: Decker Farms Water Detail on Imagery



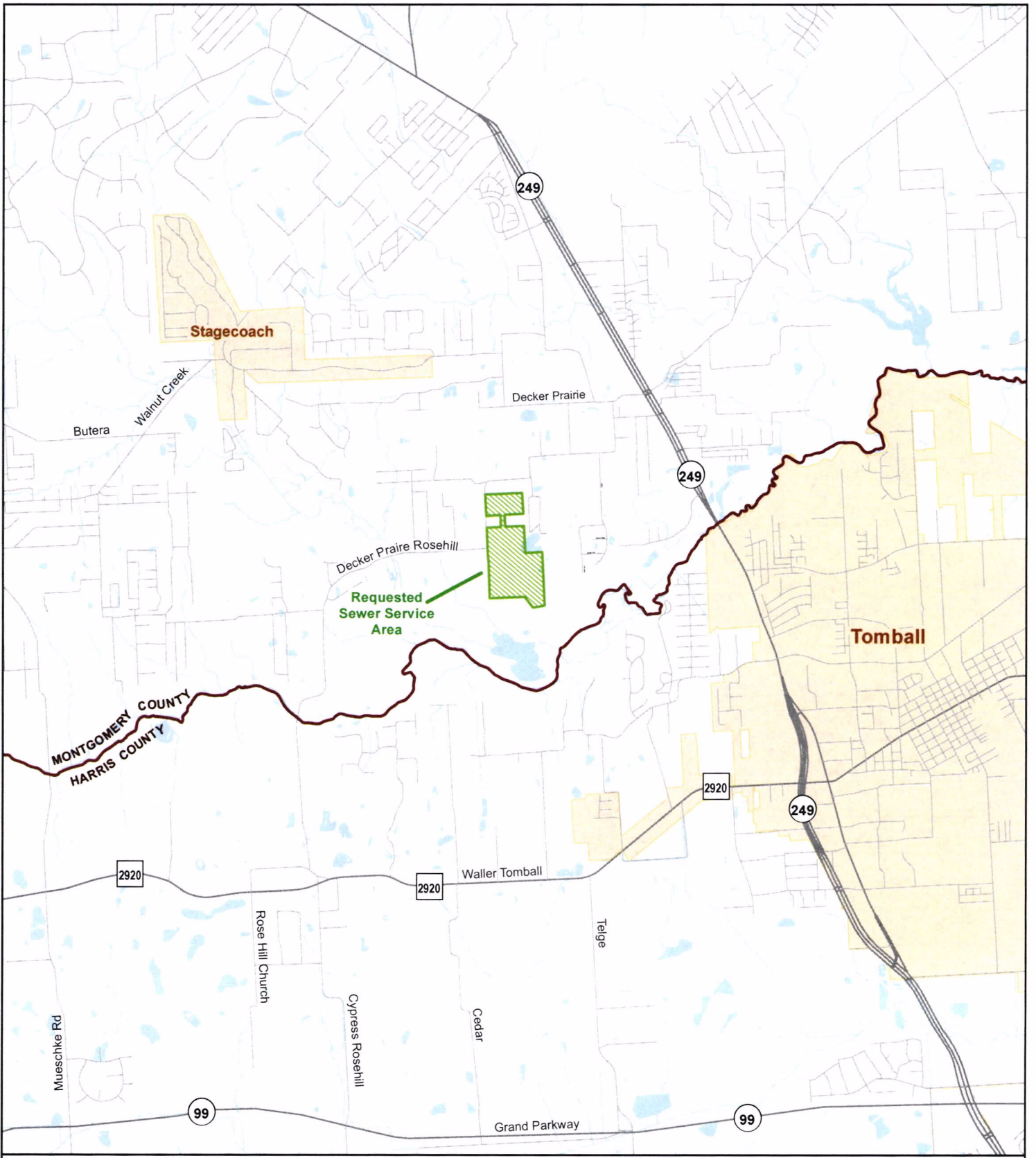
Water Detail Map on Imagery

Quadvest, L.P.
Application to Amend Water CCN No. 11612
Montgomery County



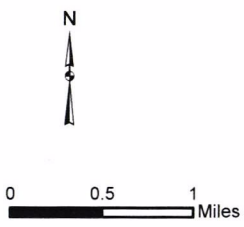
 Requested Water Service Area - approx. 175 acres

Map by: S. Burt, ASBGI
Date: March 9, 2021
Base: ESRI Imagery
Project: Decker Farms Water Detail on Imagery



General Location Sewer

Quadvest, L.P.
 Application to Amend Sewer CCN No. 20952
 Montgomery County



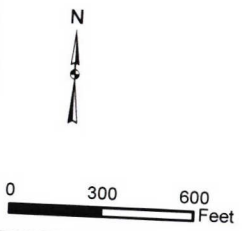
 Requested Sewer Service Area - approx. 175 acres

Map by: S. Burt, ASBGI
 Date: March 10, 2021
 Base: TxDOT Roadways
 Project: General Location Decker Farms Sewer



Sewer Detail Map

Quadvest, L.P.
 Application to Amend Sewer CCN No. 20952
 Montgomery County



 Requested Sewer Service Area - approx. 175 acres

Map by: S. Burt, ASBGI
 Date: March 9, 2021
 Base: StratMap Transv2
 Project: Decker Farms Sewer Detail



Source: Esri, Maxar, GeoEye, Earthstar Geographics, CNES/Airbus DS, USDA, USGS, AeroGRID, IGN, and the GIS User Community

Sewer Detail Map on Imagery

Quadvest, L.P.
 Application to Amend Sewer CCN No. 20952
 Montgomery County



Requested Sewer Service Area - approx. 175 acres

Map by: S. Burt, ASBG
 Date: March 9, 2021
 Base: ESRI Imagery
 Project: Decker Farms Sewer Detail on Imagery