



Control Number: 50927



Item Number: 26

Addendum StartPage: 0



Public Utility Commission of Texas

By These Presents Be It Known To All That

Talty Special Utility District

having obtained certification to provide water utility service for the convenience and necessity of the public, and it having been determined by this Commission that the public convenience and necessity would in fact be advanced by the provision of such service, Talty Special Utility District is entitled to this

Certificate of Convenience and Necessity No. 10850

to provide continuous and adequate water utility service to that service area or those service areas in Kaufman County as by final Order or Orders duly entered by this Commission, which Order or Orders resulting from Project No. 50927 are on file at the Commission offices in Austin, Texas; and are matters of official record available for public inspection; and be it known further that these presents do evidence the authority and the duty Talty Special Utility District to provide such utility service in accordance with the laws of this State and Rules of this Commission, subject only to any power and responsibility of this Commission to revoke or amend this Certificate in whole or in part upon a subsequent showing that the public convenience and necessity would be better served thereby.

Issued at Austin, Texas, this 19th day of May 2021.

CERTIFIED TO BE A TRUE AND CORRECT
COPY OF THE ORIGINAL ON FILE WITH THE
PUBLIC UTILITY COMMISSION OF TEXAS
CENTRAL RECORDS DIVISION

BY:

Brenda L. Auld

DATE:

5-24-21





Public Utility Commission of Texas

By These Presents Be It Known To All That

City of Mesquite

having obtained certification to provide water utility service for the convenience and necessity of the public, and it having been determined by this Commission that the public convenience and necessity would in fact be advanced by the provision of such service, the City of Mesquite is entitled to this

Certificate of Convenience and Necessity No. 10060

to provide continuous and adequate water utility service to that service area or those service areas in Dallas and Kaufman Counties as by final Order or Orders duly entered by this Commission, which Order or Orders resulting from Docket No. 50927 are on file at the Commission offices in Austin, Texas; and are matters of official record available for public inspection; and be it known further that these presents do evidence the authority and the duty of the City of Mesquite to provide such utility service in accordance with the laws of this State and Rules of this Commission, subject only to any power and responsibility of this Commission to revoke or amend this Certificate in whole or in part upon a subsequent showing that the public convenience and necessity would be better served thereby.

Issued at Austin, Texas, this 19th day of May 2021.

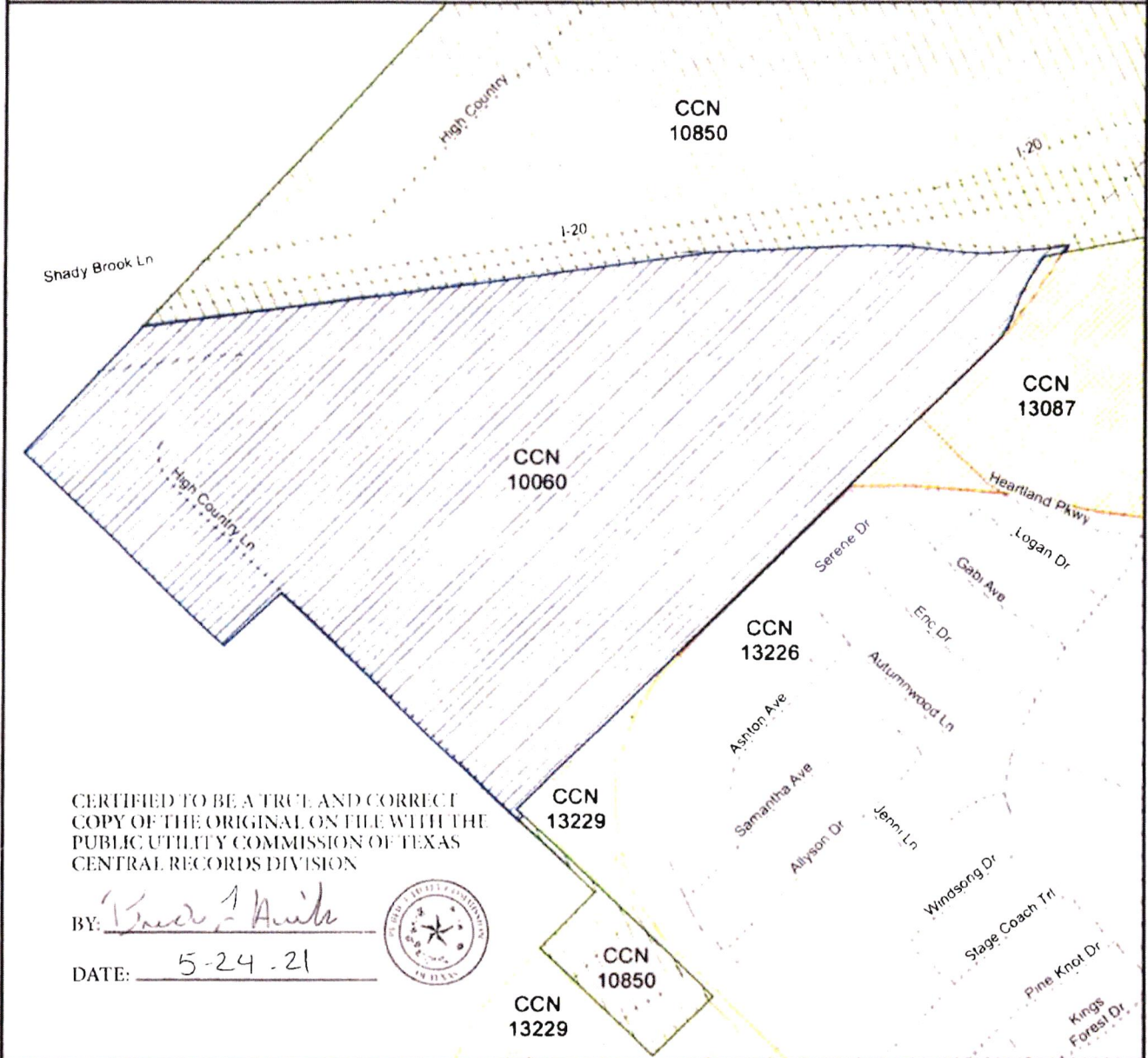
CERTIFIED TO BE A TRUE AND CORRECT
COPY OF THE ORIGINAL ON FILE WITH THE
PUBLIC UTILITY COMMISSION OF TEXAS
CENTRAL RECORDS DIVISION

BY: B. J. 21

DATE: 5-24-21



City of Mesquite
 Portion of Water CCN No. 10060
 PUC Docket No. 50927
 13.248 Agreement Amended CCN No. 10060 and
 Decertified a Portion of Talty SUD, CCN No. 10850 in Kaufman County



CERTIFIED TO BE A TRUE AND CORRECT
 COPY OF THE ORIGINAL ON FILE WITH THE
 PUBLIC UTILITY COMMISSION OF TEXAS
 CENTRAL RECORDS DIVISION

BY: Bruce A. Hinkle
 DATE: 5-24-21



Public Utility Commission of Texas
 1701 N. Congress Ave
 Austin, TX 78701

Water CCN

-  10060 - City of Mesquite
-  10850 - Talty SUD
-  13087 - Kaufman Co MUD 12
-  13226 - Kaufman Co MUD 11
-  13229 - Kaufman Co MUD 14

0 300 600
 Feet



Map by: Komal Patel
 Date created: March 22, 2021
 Project Name: 50927CityofMesquite.mxd

City of Mesquite
Portion of Water CCN No. 10060
Description Calls for Vertex Points Along the Boundary in DMS and Units (Meters)

Direction Type: *Quadrant Bearing*
Direction Units: *DMS (Degrees, Minutes, Seconds)*
Starting Point: 1331236.144 1174110.751
Ending Point: 1331236.144 1174110.751

Outer Boundary of City of Mesquite Portion of Water CCN No. 10060

Moving in a Clockwise Direction Around the Boundary Starting at #1

Number	Direction-Distance Course	DMS	Distance	Units
<i>Point of Beginning #1</i>				
1	DD	S45-39-32W	9.605	Meters
2	DD	N46-10-14W	104.599	Meters
3	DD	N46-37-38W	52.706	Meters
4	DD	N45-37-24W	275.112	Meters
5	DD	S46-46-4W	101.724	Meters
6	DD	N45-55-16W	364.341	Meters
7	DD	N42-52-50E	225.159	Meters
8	DD	N42-52-50E	0.585	Meters
9	DD	N42-52-50E	0.787	Meters
10	DD	N82-24-19E	10.252	Meters
11	DD	N82-30-0E	19.248	Meters
12	DD	N82-32-11E	28.231	Meters
13	DD	N81-59-56E	14.096	Meters
14	DD	N82-18-45E	24.883	Meters
15	DD	N81-59-56E	14.096	Meters
16	DD	N82-6-59E	23.218	Meters
17	DD	N82-41-21E	17.175	Meters
18	DD	N82-51-52E	20.95	Meters
19	DD	N81-45-9E	23.982	Meters
20	DD	N82-54-0E	19.957	Meters
21	DD	N82-52-1E	27.025	Meters
22	DD	N81-8-56E	10.017	Meters
23	DD	N83-17-19E	10.033	Meters
24	DD	N82-59-42E	20.821	Meters
25	DD	N82-1-20E	16.579	Meters
26	DD	N82-32-35E	7.877	Meters
27	DD	N82-59-57E	12.951	Meters
28	DD	N82-54-39E	13.883	Meters
29	DD	N82-7-32E	15.333	Meters
30	DD	N81-37-17E	7.396	Meters
31	DD	N81-56-17E	20.246	Meters
32	DD	N82-21-0E	17.87	Meters
33	DD	N82-47-46E	5.455	Meters

City of Mesquite
Portion of Water CCN No. 10060
Description Calls for Vertex Points Along the Boundary in DMS and Units (Meters)

Outer Boundary of City of Mesquite Portion of Water CCN No. 10060

Moving in a Clockwise Direction Around the Boundary Starting at #1

Number	Direction-Distance Course	DMS	Distance	Units
34	DD	N81-46-8E	19.322	Meters
35	DD	N83-9-49E	19.08	Meters
36	DD	N82-3-11E	25.953	Meters
37	DD	N82-23-8E	126.257	Meters
38	DD	N82-49-18E	158.197	Meters
39	DD	N84-38-38E	11.766	Meters
40	DD	N87-51-32E	19.182	Meters
41	DD	N87-16-53E	27.276	Meters
42	DD	N86-52-24E	18.876	Meters
43	DD	N86-48-49E	33.154	Meters
44	DD	N86-12-7E	14.76	Meters
45	DD	N88-29-45E	12.34	Meters
46	DD	N87-9-30E	44.704	Meters
47	DD	N89-16-46E	28.764	Meters
48	DD	S89-12-48E	4.838	Meters
49	DD	S87-11-18E	10.329	Meters
50	DD	S88-4-41E	16.563	Meters
51	DD	S86-52-12E	13.267	Meters
52	DD	S85-25-28E	10.483	Meters
53	DD	S84-12-7E	7.172	Meters
54	DD	S84-15-3E	24.85	Meters
55	DD	S83-42-34E	26.403	Meters
56	DD	S85-26-31E	11.382	Meters
57	DD	S85-50-29E	15.208	Meters
58	DD	N86-22-7E	31.861	Meters
59	DD	N85-2-18E	56.793	Meters
60	DD	N81-55-6E	26.822	Meters
61	DD	S20-40-14W	10.096	Meters
62	DD	S78-53-15W	26.252	Meters
63	DD	S41-4-17W	6.438	Meters
64	DD	S34-59-1W	23.604	Meters
65	DD	S29-4-29W	23.603	Meters
66	DD	S23-9-9W	23.606	Meters
67	DD	S19-7-55W	8.491	Meters
68	DD	S22-37-30W	15.292	Meters
69	DD	S31-46-3W	15.29	Meters
70	DD	S40-52-54W	15.243	Meters
71	DD	S45-25-59W	586.306	Meters

City of Mesquite
Portion of Water CCN No. 10060
Description Calls for Vertex Points Along the Boundary in DMS and Units (Meters)

Outer Boundary of City of Mesquite Portion of Water CCN No. 10060

Moving in a Clockwise Direction Around the Boundary Starting at #1

Number	Direction- Distance Course	DMS	Distance	Units
72	DD	S45-25-59W	55.558	<i>Meters</i>
73	DD	S42-29-2W	2.537	<i>Meters</i>
74	DD	S45-21-44W	27.486	<i>Meters</i>
75	DD	S45-21-44W	205.253	<i>Meters</i>
76	DD	S45-55-0E	0.871	<i>Meters</i>
77	DD	S45-49-39E	11.234	<i>Meters</i>

Return to Point of Beginning (#78)

Notes:

***Transfer Area from Talty SUD Water CCN Service Area No. 10850 to
City of Mesquite Water CCN Service Area No. 10060***

County Clerk's Memo:
PAGE ADDED FOR FILE MARK

2025-01-11 11:11:11
11:11:11 11:11:11 11:11:11