



Control Number: 50404



Item Number: 47

Addendum StartPage: 0

COATS | ROSE

A PROFESSIONAL CORPORATION

2021 APR 23 PM 2:23

JBI@THKE@COATSROSE.COM

DIRECT: (972) 982-8454

FAX: (972) 702-8451

JOSHUA A. BEITHKE
ASSOCIATE

April 28, 2021

Public Utility Commission of Texas
Central Records
Attn.: Filing Clerk
1701 N. Congress Ave.
Austin, Texas 78711

Via PUC Interchange Filer

Re: PUC Docket No. 50404; *First Amended Petition by Sterling Deason O'Donnell and Darwin Deason, Co-Trustees of the Darwin Deason O'Donnell DD 2012 Trust Under Agreement of the DD 2014-B Grantor Retained Annuity Trust for Expedited Release Pursuant to Texas Water Code Section 13.2541*; Public Utility Commission of Texas

Dear File Clerk:

Included with this letter for filing in the above-referenced matter please find the following mapping filed to supplement Petitioner's First Amended Petition for Expedited Release Pursuant to Texas Water Code Section 13.2541, which was filed on April 27, 2021 as item no. 46 in the above referenced docket:

1. Exhibit "B-1" to First Amended Petition – Location Map;
2. Exhibit "B-2" to First Amended Petition – Detailed Map;
3. Exhibit "B-3" to First Amended Petition – Metes and Bounds Description;
4. Shapefiles, including the following file extensions:
 - a. .shp;
 - b. .shx;
 - c. .dbf; and
 - d. .prj

14755 PRESTON ROAD, SUITE 600, DALLAS, TEXAS 75254

PHONE: (972) 788-1600 FAX: (972) 702-0662

coatsrose.com

HOUSTON | AUSTIN | DALLAS | SAN ANTONIO | NEW ORLEANS | CINCINNATI
4818-6696-7015.v1

47

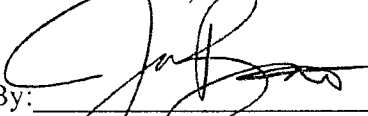
April 28, 2021
Page 2

These files are being filed electronically using the PUC Interchange Filer, in accordance with the Order Suspending Rules in Docket No. 50664, Issues Relating to the State Disaster for the Coronavirus Disease 2019.

Please do not hesitate to contact me should you need anything further.

Very truly yours,

COATS ROSE, P.C.

By: 

Joshua A. Bethke
State Bar No. 24105465
14755 Preston Road, Suite 600
Dallas, Texas 75254
Telephone: (972) 982-8454
Facsimile: (972) 702-0662
Email: jbethke@coatsrose.com

Natalie B. Scott
State Bar No. 24027970
Terrace 2
2700 Via Fortuna, Suite 350
Austin, Texas 78746
Telephone: (512) 469-7987
Facsimile: (512) 469-9408
Email: nscott@coatsrose.com

ATTORNEYS FOR PETITIONERS

CERTIFICATE OF SERVICE

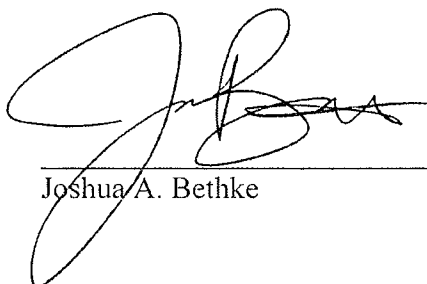
I hereby certify that a copy of the foregoing document was served on the following parties on April 28, 2021 via electronic mail and by filing on the PUC Interchange System, in accordance with the Order Suspending Rules, issued in Project No. 50664.

Attorneys for Marilee Special Utility District:

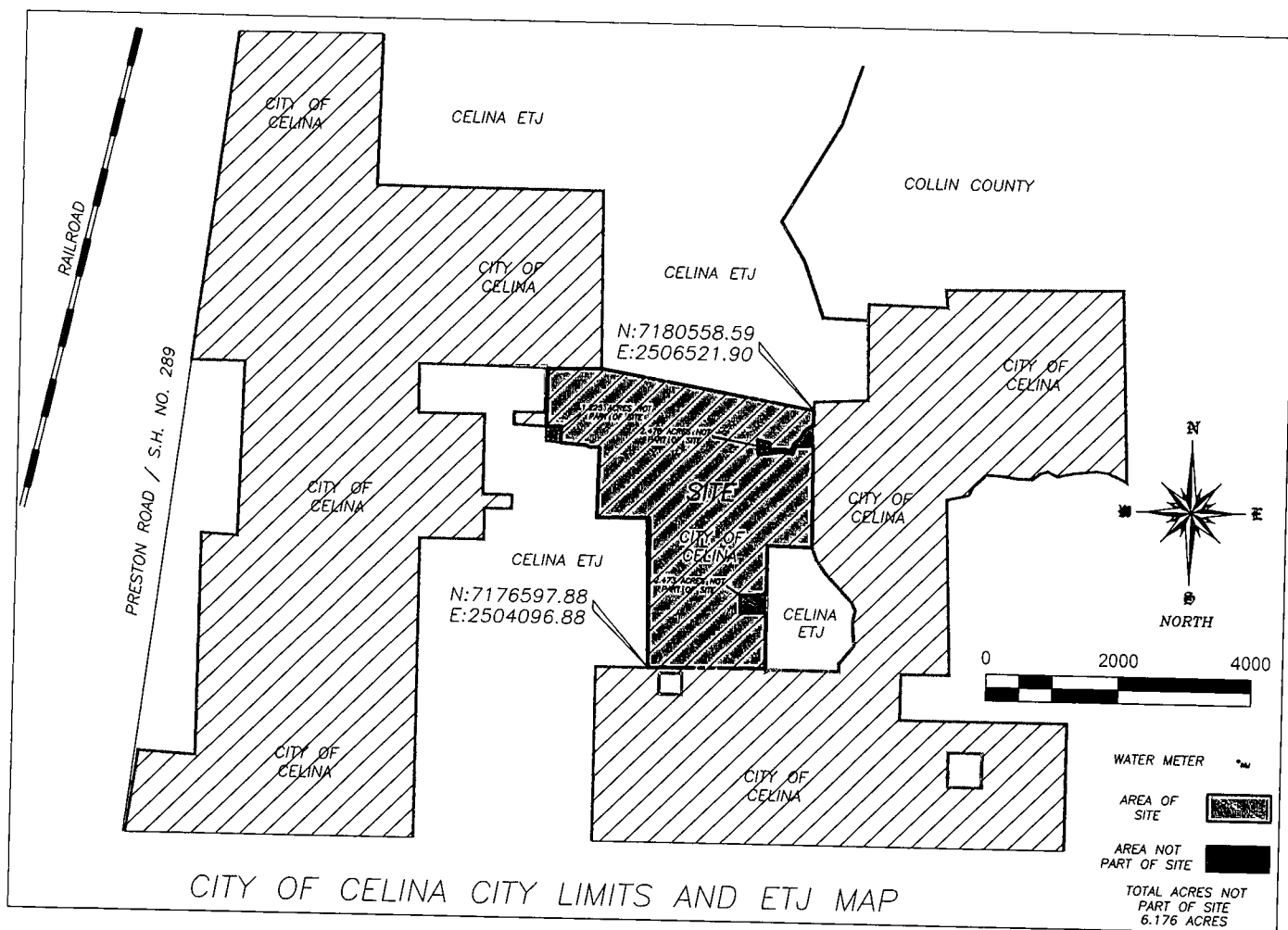
Maria Huynh
James W. Wilson
JAMES W. WILSON & ASSOCIATES, PLLC
103 West Main Street
Allen, Texas 75013
Facsimile: (972) 972-755-0904
Email: mhuynh@jww-law.com
Email: jwilson@jww-law.com

Attorneys for Commission Staff:

David Hoard
Attorney-Legal Division
Public Utilities Commission of Texas
1701 N. Congress Ave.
P.O. Box 13326
Austin, Texas 78711-3326
Facsimile: (512) 936-7285
Email: david.hoard@puc.texas.gov

A handwritten signature in black ink, appearing to read 'Joshua A. Bethke', is written over a horizontal line.

Joshua A. Bethke



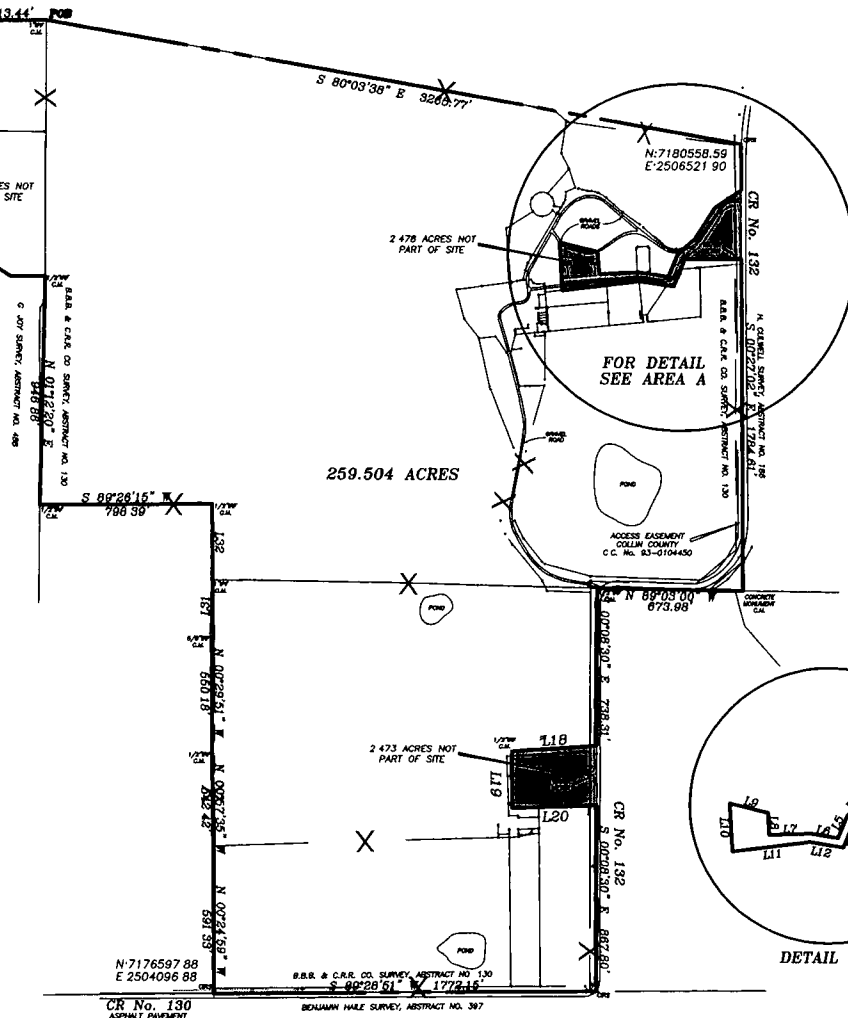
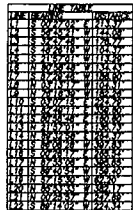
J. BIGGS SURVEY, ABSTRACT NO. 52
G. JOY SURVEY, ABSTRACT NO. 488



NORTH
SCALE 1" = 300'

LEGEND

- C.M. = CONTROLLING MONUMENT
- C.I.R.S. = CAPPED 1/2" IRON ROD SET STAMPED (4813)
- I.R.F. = IRON ROD FOUND
- = POWER POLE
- = GUYWIRE
- ◆ = SIGN
- = ELECTRIC METER
- ⊙ = WELL
- = WATER METER
- ⊞ = AC UNIT
- ⋆ = LIGHT POLE
- = TELEPHONE BOX
- AREA NOT PART OF SITE 6.176 ACRES



SURDUKAN SURVEYING, INC.

P.O. BOX 126
ANNA, TEXAS 75409
(972) 924-8200
FIRM NO. 10069500

SCALE 1" = 300'

DATE: DECEMBER 20, 2019

JOB No 2018-143

PUD EXHIBIT
259.504 ACRES
B.B.B. & C.R.R. CO. SURVEY
ABSTRACT NO. 130
G. JOY SURVEY
ABSTRACT NO. 488
COLLIN COUNTY, TEXAS

EXHIBIT "B-3"

METES AND BOUNDS DESCRIPTION

LEGAL DESCRIPTION

BEING a tract of land situated in the B.B.B. & C.R.R. Co. Survey, Abstract No. 130 and in the G. Joy Survey, Abstract No. 488, Collin County, Texas and being part of a called 21.335 acre tract conveyed to Patricia Deason as recorded in Volume 5698, Page 1119, Land Records of Collin County, Texas, being part of a called 166.309 acre tract conveyed to Patricia Deason as recorded in County Clerks No. 96-0036768, Land Records of Collin County, Texas, being all of a called 75.931 acre tract conveyed to Patricia Miller as recorded in County Clerks No. 97-0099986, Land Records of Collin County, Texas, and being more particularly described by metes and bounds as follows;

BEGINNING at a 1" iron pipe found for corner at the northeast corner of said 21.335 acre tract, said iron rod being at the northwest corner of said called 166.309 acre tract, said iron pipe also being at the southeast corner of DC Ranch, Phase 2 Addition as recorded in Volume 2015, Page 686, Land Records of Collin County, Texas;

THENCE S 80°03'38" E following the north line of said 166.309 acre tract a distance of 3265.77' to a 1/2" iron rod with yellow plastic cap stamped "4613" set for corner in the west shoulder of County Road No. 132;

THENCE S 00°27'02" E a distance of 213.37' to a point for corner;

THENCE S 56°45'21" W a distance of 144.08' to a point for corner;

THENCE S 32°47'46" W a distance of 178.77' to a point for corner;

THENCE S 48°26'19" W a distance of 104.37' to a point for corner;

THENCE S 21°57'01" W a distance of 113.29' to a point for corner;

THENCE N 80°58'48" W a distance of 134.43' to a point for corner;

THENCE S 87°29'46" W a distance of 186.90' to a point for corner;

THENCE N 03°13'17" W a distance of 104.31' to a point for corner;

THENCE N 76°18'39" W a distance of 182.26' to a point for corner;

THENCE S 03°07'15" E a distance of 224.79' to a point for corner;

THENCE N 82°49'11" E a distance of 359.60' to a point for corner;

THENCE S 80°58'48" E a distance of 160.60' to a point for corner;

THENCE N 21°57'01" E a distance of 135.73' to a point for corner;

THENCE N 89°32'58" E a distance of 264.37' to a point for corner in County Road No. 132;

THENCE S 00°27'02" E following County road No. 132 a distance of 1538.37' to a concrete monument found for corner for the southeast corner of said 166.309 acre tract;

THENCE N 89°03'00" W following County Road No. 132 and the south line of said 166.309 acre tract a distance of 673.98' to a 1/2" iron rod found for corner at the northeast corner of said 75.931 acre tract;

THENCE S 00°08'30" E following County Road No. 132 and the east line of said 75.931 acre tract a distance of 738.31' to a point for corner;

THENCE S 86°08'28" W a distance of 397.83' to a point for corner;

THENCE S 00°26'17" E a distance of 265.54' to a point for corner;

THENCE N 87°55'06" E a distance of 395.85' to a point for corner in County Road No. 132;
THENCE S 00°08'30" E following County Road No. 132 and the east line of said 75.931 acre tract a distance of 1884.04' to a 1/2" iron rod with yellow plastic cap stamped "4613" set for corner in County Road 130;

THENCE S 89°28'51" W following County Road No. 130 and the south line of said 75.931 acre tract a distance of 1772.15' to a 1/2" iron rod with yellow plastic cap stamped "4613" set for corner at the southwest corner of said 75.931 acre tract;

THENCE N 00°24'59" W following the west line of said 75.931 acre tract a distance of 591.33' to a point for corner, said point being the southeast corner of a 6.10 acre tract conveyed to Arden & Casey Field as recorded in County Clerks No. 20170428000541330, Land Records of Collin County, Texas,;

THENCE N 00°57'35" W following the west line of said 75.931 acre tract and the east line of said 6.10 acre tract a distance of 542.42' to a 1/2" iron rod found for corner at the northeast corner of said 6.10 acre tract and being the southeast corner of a called 9.943 acre tract conveyed to Daniel & Misty Simons as recorded in County Clerks No. 20070816001143760, Land Records of Collin County, Texas;

THENCE N 00°29'51" W following the west line of said 75.931 acre tract and the east line of said 9.943 acre tract a distance of 550.18' to a 5/8" iron rod found for corner at the northeast corner of said 9.943 acre tract and also being the southeast corner of a called Tract 3 as conveyed to Joe & Janice Stalling as recorded in County Clerks No. 93-0075959, Land Records of Collin County, Texas;

THENCE N 00°38'01" E following the west line of said 75.931 acre tract and the east line of said Tract 3 a distance of 247.35' to a 1" iron pipe found for corner at the northwest corner of said 75.931 acre tract, said iron rod being at the southerly southwest corner of said 166.309 acre tract;

THENCE N 00°21'11" W following the west line of said 166.309 acre tract and the east line of said Tract 3 a distance of 352.84' to a 1/2" iron rod found for corner at the northeast corner of said Tract 3. said iron rod being at the ell corner of said 166.309 acre tract;

THENCE S 89°26'15" W following the North line of Tract 3 and 1 of said Stalling's tract and the south line of said 166.309 acre tract a distance of 798.39' to a 1/2" iron rod found for corner being the northwest corner of said Tract 1, said iron rod being in the east line of a called 26.781 acre tract conveyed to Alfredo and Maria Rangel as recorded in County Clerks No. 95-0076857, Land Records of Collin County, Texas;

THENCE N 01°12'20" E following the east line of said 26.781 acres tract and the west line said 166.309 acre tract a distance of 946.86' to a point;

THENCE N 00°32'47" E following the east line of said 26.781 acres tract and the west line said 166.309 acre tract a distance of 115.03' to a 1/2" iron rod found for corner at the northeast corner of said 26.781 acres tract and and said iron rod being at the southeast corner of said called 21.335 acre tract;

THENCE S 89°40'54" W following the north line of said 26.781 acres tract and the south line said 21.335 acre tract a distance of 159.40' to a point;

THENCE N 57°15'30" W following the north line of said 26.781 acres tract and the south line said 21.335 acre tract a distance of 62.20' to a point;

THENCE N 85°53'33" W following the north line of said 26.781 acres tract and the south line said 21.335 acre tract a distance of 382.17' to a point for corner;

THENCE N 00°25'57" E a distance of 247.69' to a point for corner;

THENCE S 89°14'02" W a distance of 224.34' to a point for corner in the west line of said 21.335 acre tract;

THENCE N 00°20'26" E following the west line said 21.335 acre tract a distance of 871.32' to a 1/2" iron rod with yellow plastic cap stamped "4613" set for corner in the south line of said DC Ranch, Phase 2 Addition;

THENCE N 89°15'47" E following the south line of said DC Ranch, Phase 2 Addition a distance of 813.44' to the POINT OF BEGINNING and containing 11,303,980 Square Feet or 259.504 Acres of land.

Filing Party: Sterling Deason O'Donnell and Darwin Deason

Docket: 50404

This filing contains Shapefiles.

For any questions, please contact Central Records at
(512)936-7180