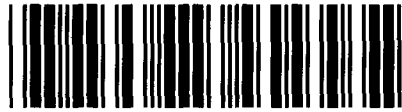


Control Number: 50059



Item Number: 8

Addendum StartPage: 0

DOCKET NO. 50059

**APPLICATION OF DOUBLE DIAMOND § PUBLIC UTILITY COMMISSION
UTILITIES COMPANY, INC., DOUBLE §
DIAMOND PROPERTIES §
CONSTRUCTION COMPANY, AND § OF TEXAS
MIDWAY WATER UTILITIES, INC. §
FOR SALE, TRANSFER, OR MERGER §
OF FACILITIES AND CERTIFICATE §
RIGHTS IN HILL, PALO PINTO, §
JOHNSON, AND GRAYSON COUNTIES §**

**APPLICANTS' ERRATA TO ATTACHMENTS 9 AND 10
AND SUPPLEMENT TO THE APPLICATION FOR SALE, TRANSFER, OR MERGER
OF FACILITIES AND CERTIFICATE RIGHTS IN HILL, PALO PINTO, JOHNSON,
AND GRAYSON COUNTIES**

Double Diamond Utilities Company, Inc., Double Diamond Properties Construction Company, and Midway Water Utilities (Midway) (collectively Applicants) file this Errata to Attachments 9 and 10 and Supplement to the Application for Approval of the Sale, Transfer, or Merger of Facilities and Certificates of Convenience and Necessity Rights in Hill, Palo Pinto, Johnson, and Grayson Counties (STM Application) as follows:

I. ERRATA TO ATTACHMENTS 9 AND 10

Applicants filed the STM Application on September 27, 2019. On October 2, 2019, the Public Utility Commission of Texas (Commission) issued Order No. 1, which requires, among other things, information from Applicants concerning this STM Application. Applicants are filing the attached Errata to Attachments 9 and 10 in response to requests made by Commission Staff to ensure accurate mapping. The Errata to Attachment 9 are three maps entitled 1) Application of Midway Water Utilities Inc. to Acquire CCN 20705 from Double Diamond, Inc. in Grayson County; 2) Application of Midway Water Utilities, Inc. to Acquire CCN 20705 from Double Diamond, Inc. in Palo Pinto County; and 3) Application of Midway Water Utilities, Inc. to Acquire CCN 20705 from Double Diamond, Inc. in Hill County and Johnson County, and those maps replace bates number 234. Errata to Attachment 10 are a map entitled The Retreat CCNS 12087 and 20705, which replaces bates numbers 236 and 240, and a map entitled White Bluff CCNs 12087 and 20705, which replaces bates number 237. Also, at the request of Commission Staff, we



are including copies of the originally filed maps from Attachments 9 and 10 that are not subject to this Errata.

II. SUPPLEMENT TO THE APPLICATION

At the request of Commission Staff, the Applicants are filing the foregoing supplement to their application regarding the corporate structure of the acquiring entity, Midway. Confidential Supplement Attachment 1 is an illustration of Midway's corporate parent SouthWest Water Company's Texas Utilities, and Confidential Supplement Attachment 2 is a description of the entities included in Texas Utilities.

III. CONCLUSION

Applicants respectfully requests the Application be found administratively complete, and that it be granted any other relief to which it may be entitled.

Respectfully submitted,

LLOYD GOSSELINK
ROCHELLE & TOWNSEND, P.C.
816 Congress Avenue, Suite 1900
Austin, Texas 78701
Telephone: (512) 322-5800
Facsimile: (512) 472-0532



LAMBETH TOWNSEND
State Bar No. 20167500
ltownsend@lglawfirm.com

WILLIAM A. FAULK, III
State Bar No. 24075674
cfaulk@lglawfirm.com

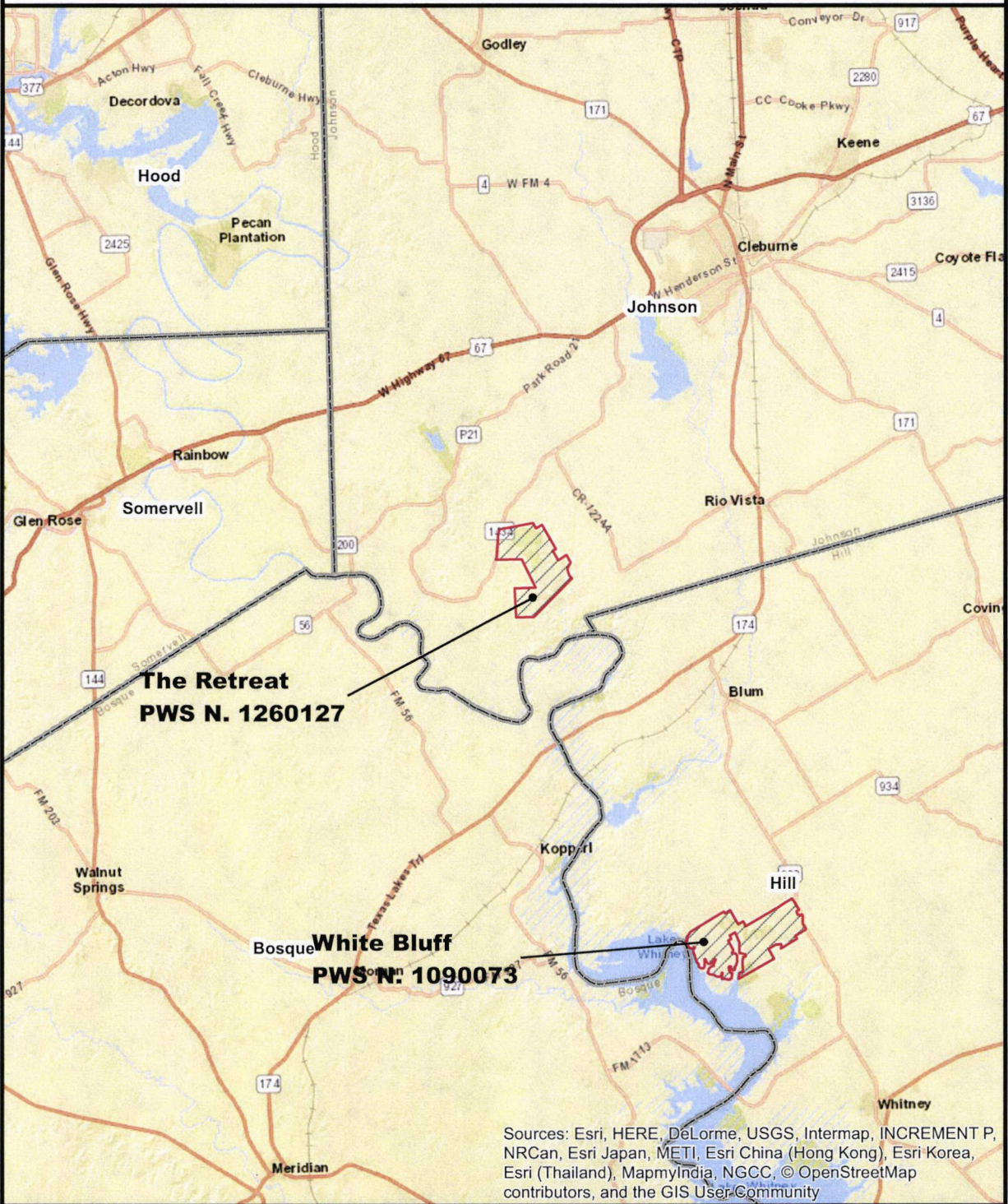
ATTORNEYS FOR APPLICANTS

CERTIFICATE OF SERVICE

I certify that a true and correct copy of the foregoing document was served on all parties of record on this 8th day of November, 2019.

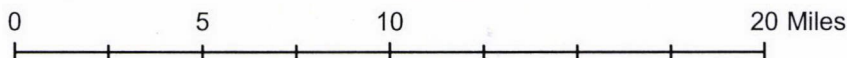

WILLIAM A. FAULK, III

APPLICATION OF MIDWAY WATER UTILITIES, INC. TO ACQUIRE CCN 12087 FROM DOUBLE DIAMOND UTILITIES CO. IN HILL AND JOHNSON COUNTY

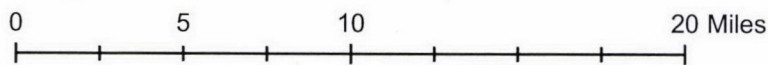


REQUESTED AREA TO BE TRANSFERRED

 DOUBLE DIAMOND UTILITIES CO.



APPLICATION OF MIDWAY WATER UTILITIES, INC. TO ACQUIRE CCN 12087 FROM DOUBLE DIAMOND UTILITIES CO. IN PALO PINTO COUNTY



APPLICATION OF MIDWAY WATER UTILITIES, INC. TO ACQUIRE CCN 13235 FROM DOUBLE DIAMOND PROPERTIES CONSTRUCTION CO. IN GRAYSON COUNTY

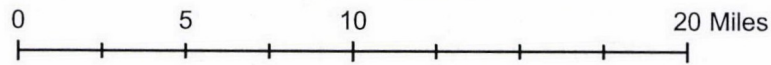


Sources: Esri, HERE, DeLorme, USGS, Intermap, INCREMENT P, NRCAN, Esri Japan, METI, Esri China (Hong Kong), Esri Korea, Esri (Thailand), MapmyIndia, NGCC, © OpenStreetMap contributors, and the GIS User Community

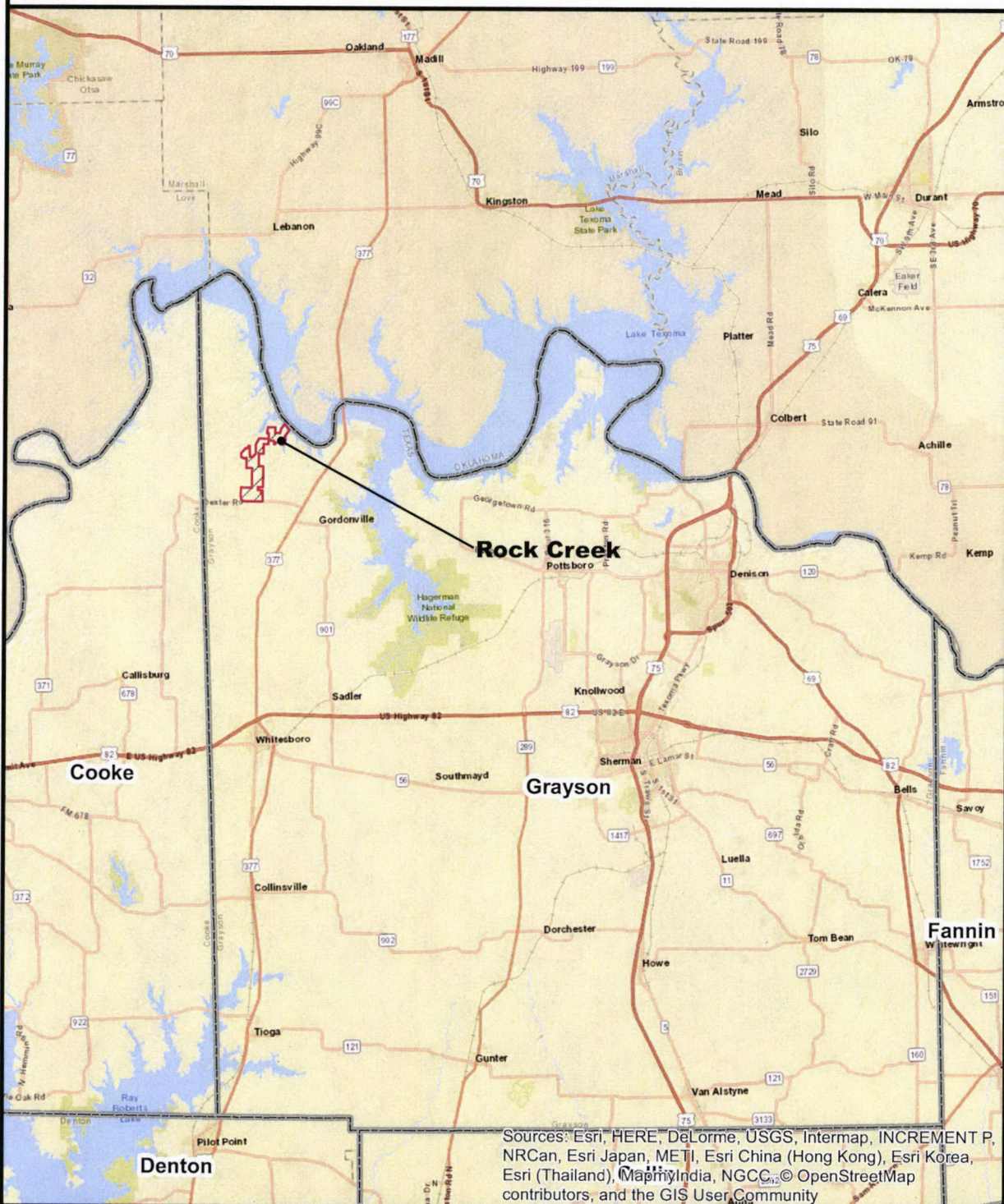


REQUESTED AREA TO BE TRANSFERED

 DOUBLE DIAMOND PROPERTIES CONSTRUCTION CO.

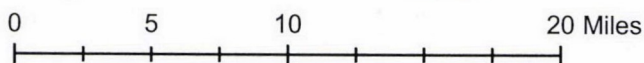


APPLICATION OF MIDWAY WATER UTILITIES, INC. TO ACQUIRE CCN 20705 FROM DOUBLE DIAMOND, INC. IN GRAYSON COUNTY

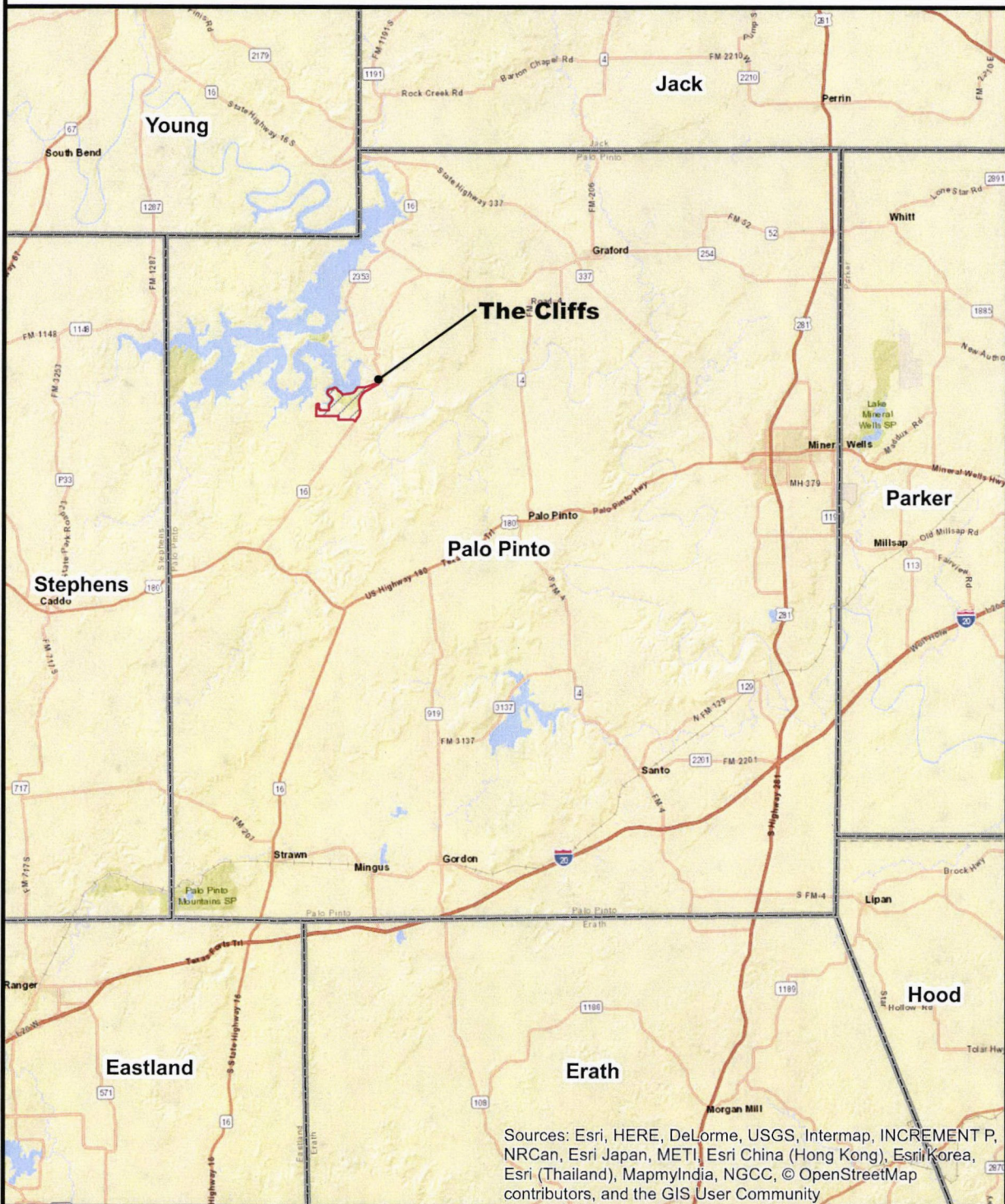


REQUESTED AREA TO BE TRANSFERRED

 DOUBLE DIAMOND, INC.



APPLICATION OF MIDWAY WATER UTILITIES, INC. TO ACQUIRE CCN 20705 FROM DOUBLE DIAMOND, INC. IN PALO PINTO COUNTY

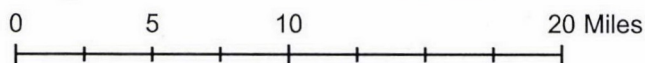


Sources: Esri, HERE, DeLorme, USGS, Intermap, INCREMENT P, NRCan, Esri Japan, METI, Esri China (Hong Kong), Esri Korea, Esri (Thailand), MapmyIndia, NGCC, © OpenStreetMap contributors, and the GIS User Community

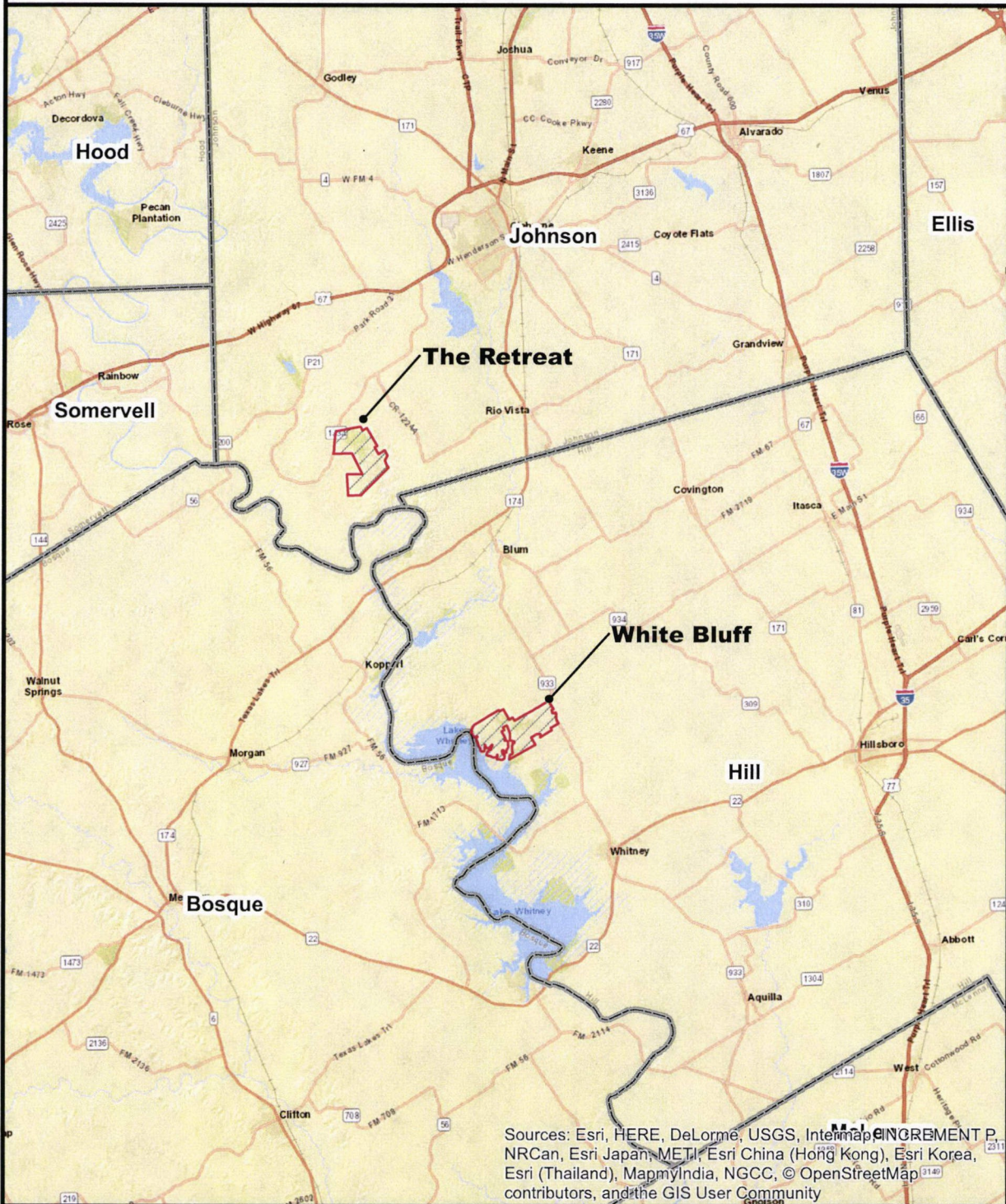


REQUESTED AREA TO BE TRANSFERED

 DOUBLE DIAMOND, INC.

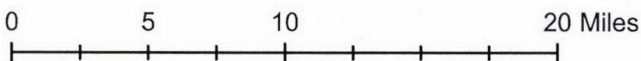


APPLICATION OF MIDWAY WATER UTILITIES, INC. TO ACQUIRE CCN 20705 FROM DOUBLE DIAMOND, INC. IN HILL COUNTY AND JOHNSON COUNTY

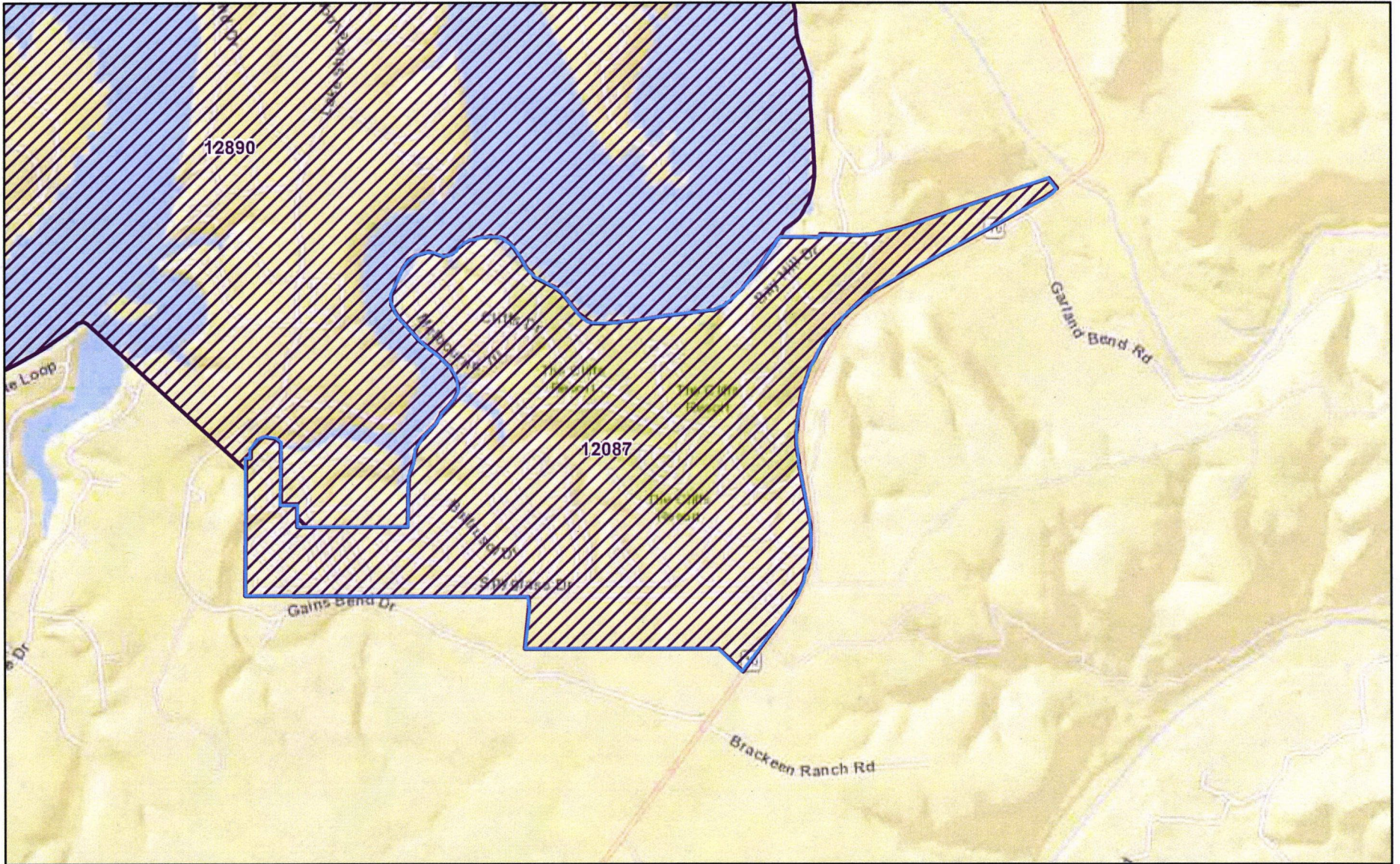


REQUESTED AREA TO BE TRANSFERRED

 DOUBLE DIAMOND, INC.



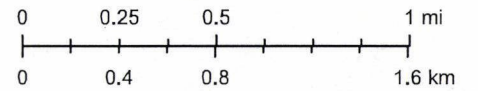
CCN 12087 The Cliffs



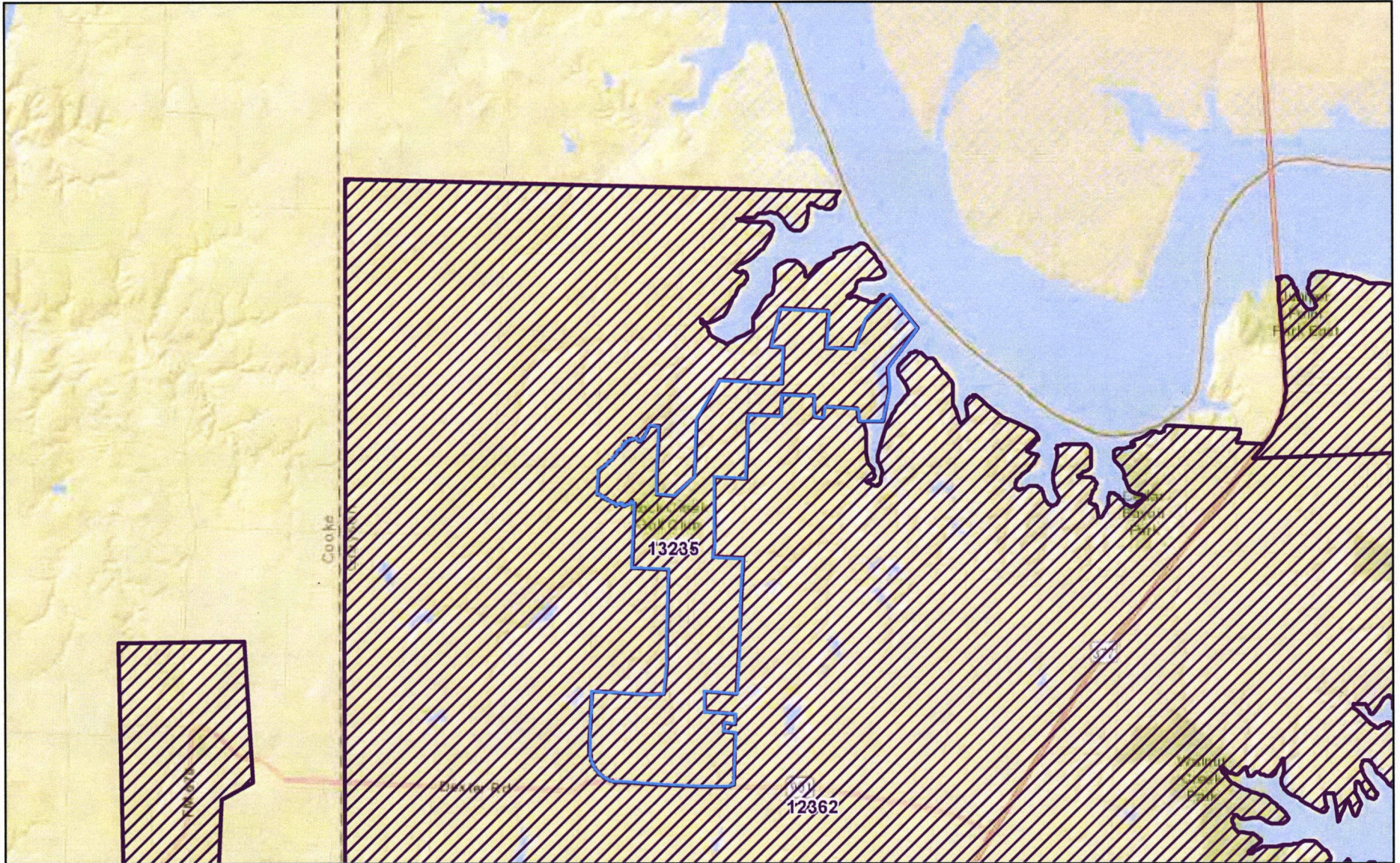
September 9, 2019

60

1:36,112

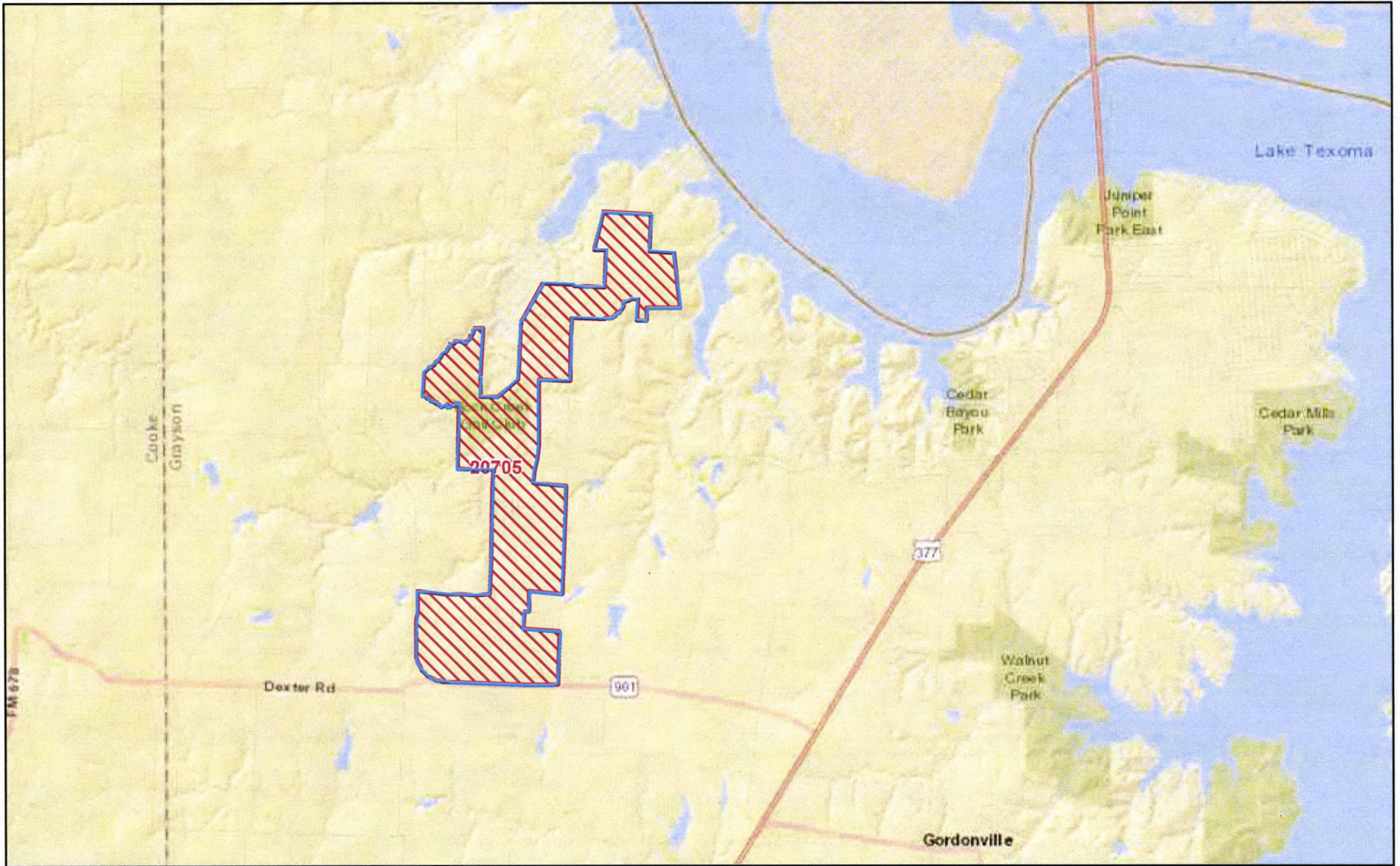


Sources: Esri, HERE, Garmin, USGS, Intermap, INCREMENT P, NRCan,



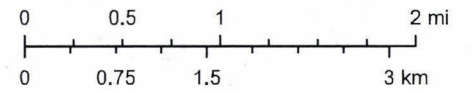
September 9, 2019

20705 Rock Creek



September 9, 2019

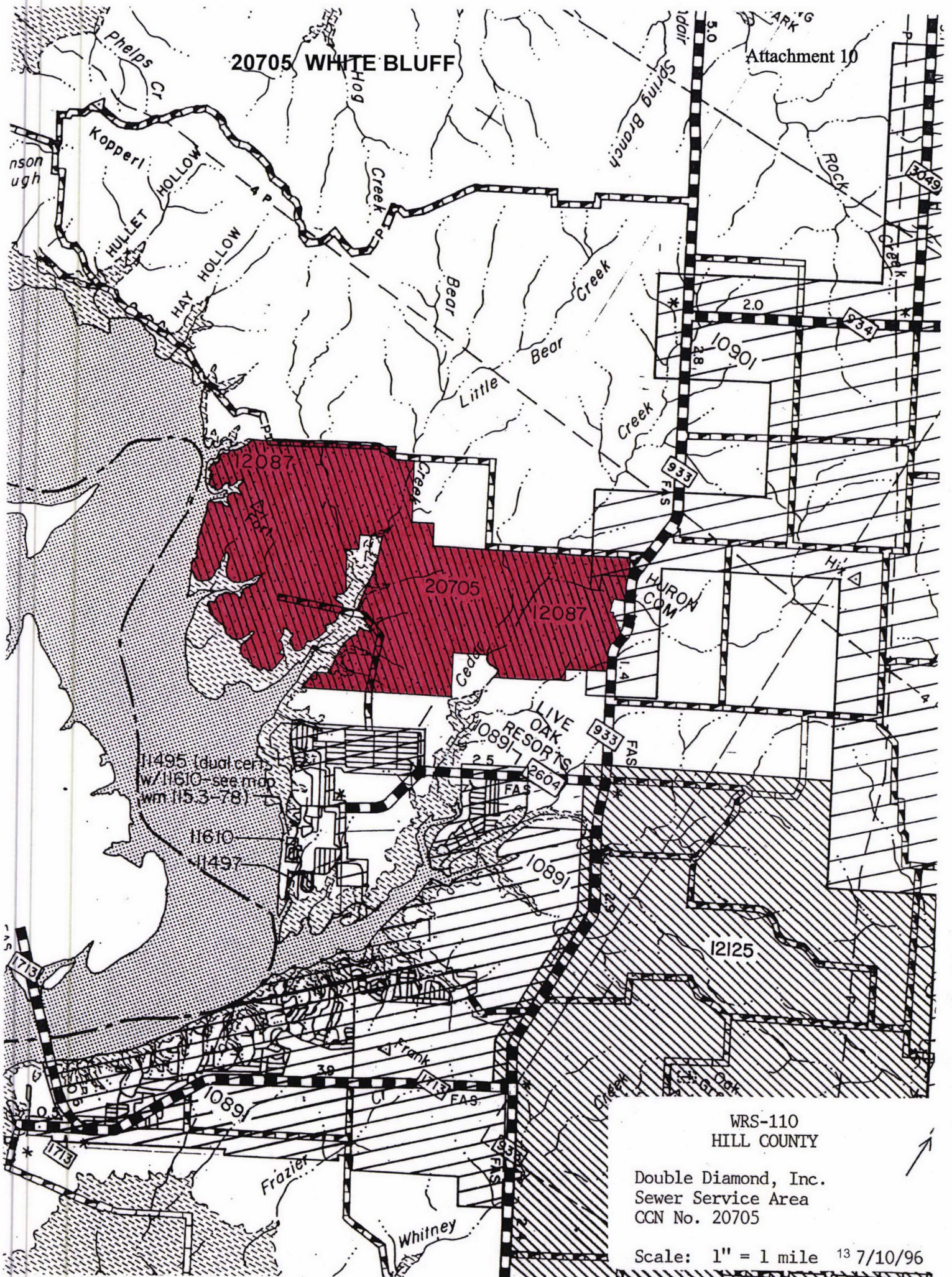
1:72,224



Sources: Esri, HERE, Garmin, USGS, Intermap, INCREMENT P, NRCAN

20705 WHITE BLUFF

Attachment 10



11495 (dual cert
w/11610-see map
w/1153-78)

11610

11497

LIVE OAK
RESORTS

10897

25

FAS

12604

FAS

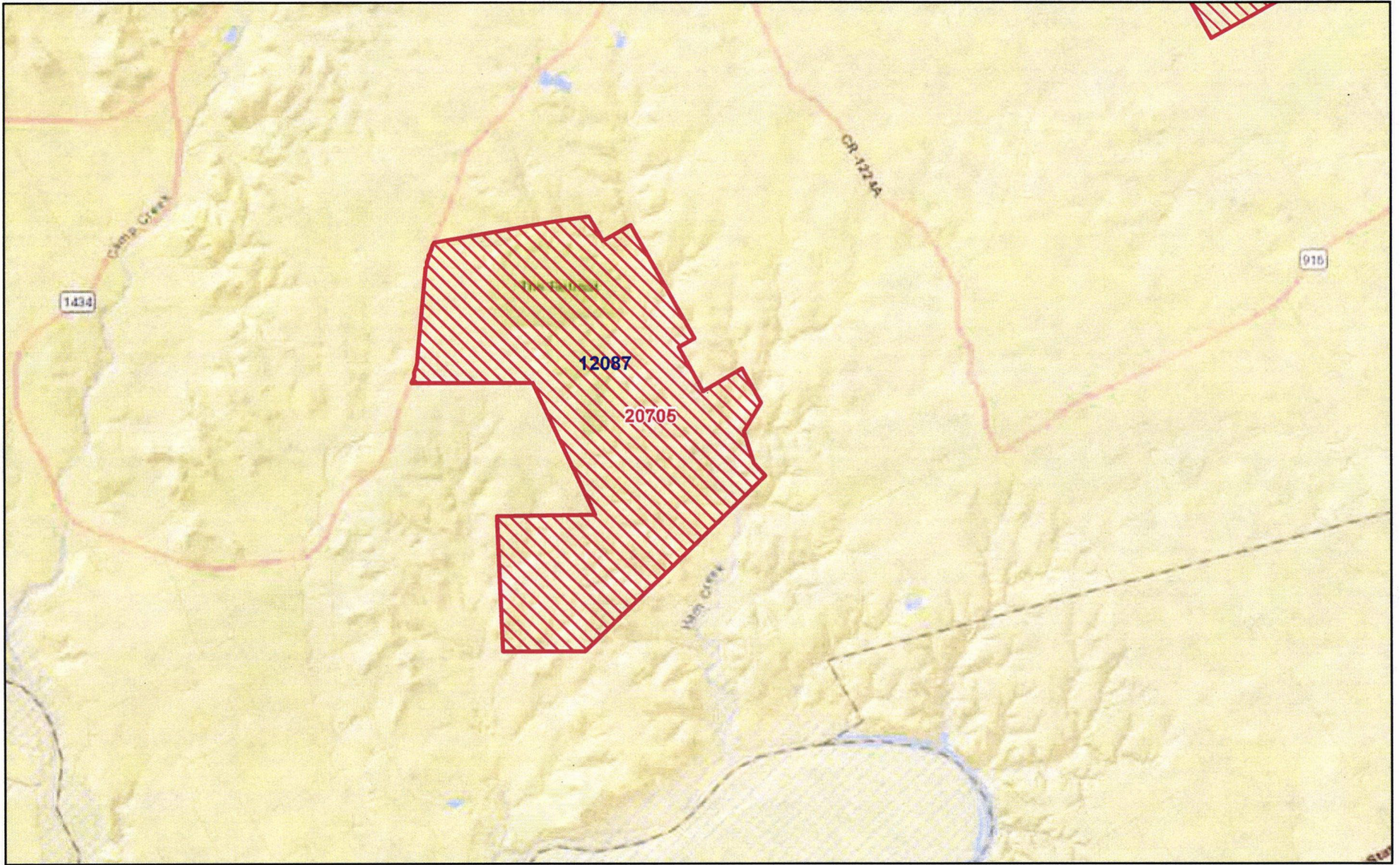
10891

WRS-110
HILL COUNTY

Double Diamond, Inc.
Sewer Service Area
CCN No. 20705

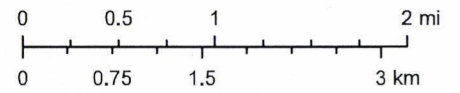
Scale: 1" = 1 mile 13 7/10/96

The Retreat CCNs 12087 and 20705



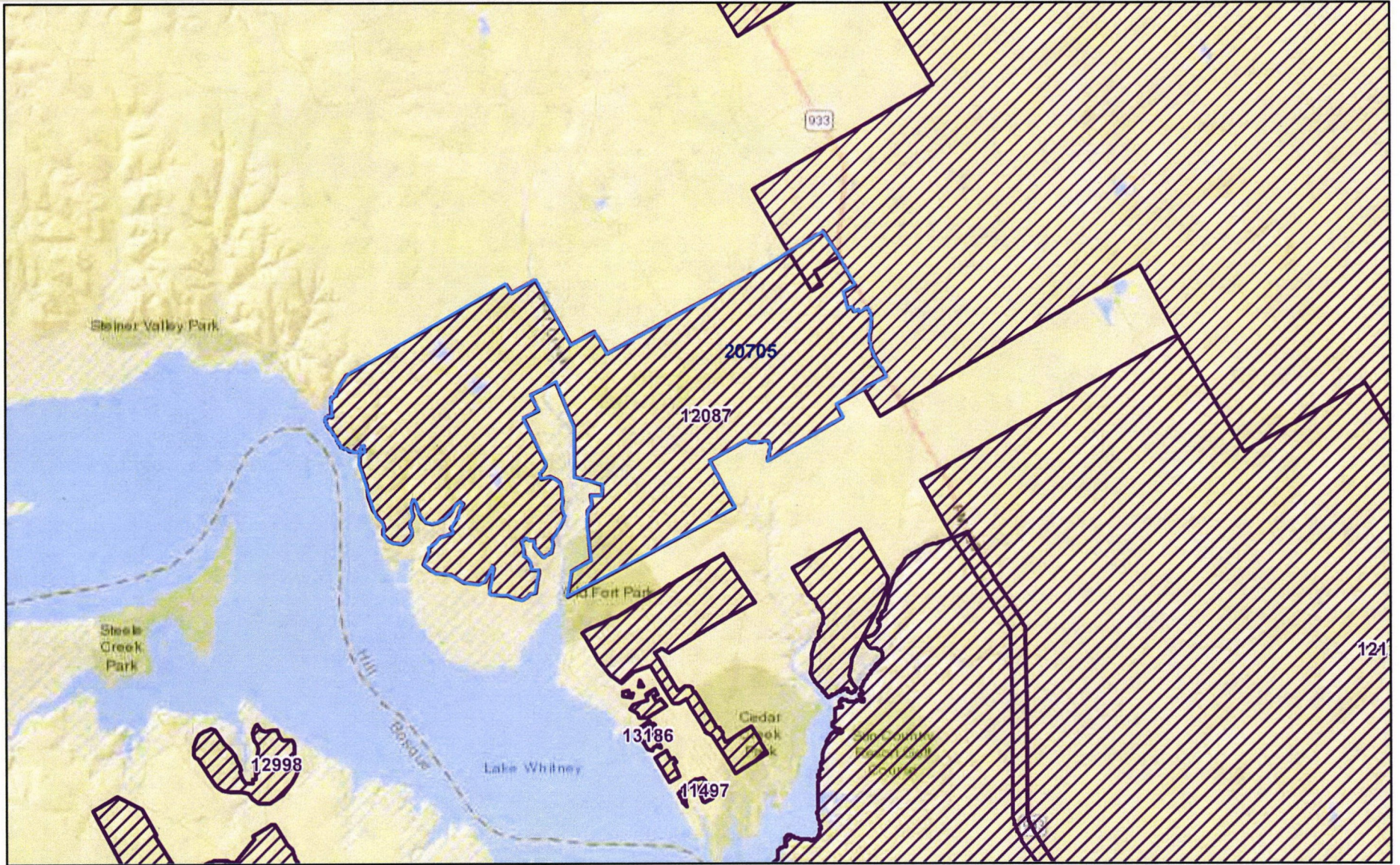
October 30, 2019

1:72,224



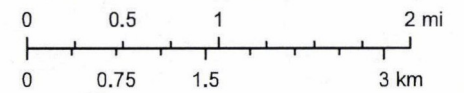
Sources: Esri, HERE, Garmin, USGS, Intermap, INCREMENT P, NRCan,

White Bluff CCNs 12087 and 20705



October 30, 2019

1:72,224



Sources: Esri, HERE, Garmin, USGS, Intermap, INCREMENT P, NRCan,

**Supplemental
Attachment 1
is Confidential and being
provided under seal.**

**Supplemental
Attachment 2
is Confidential and being
provided under seal.**