



Control Number: 49926



Item Number: 6

Addendum StartPage: 0



RECEIVED

2019 OCT -9 AM 10:08

PUBLIC UTILITY COMMISSION
FILING CLERK

October 3rd, 2019

Public Utility Commission of Texas
Central Records
1701 N. Congress Avenue
P.O. Box 13326
Austin, Texas 78711-3326

RE: Docket No. 49926
Application of Crystal Clear Special Utility District for a Name Change and to Amend its
Sewer Certificates of Convenience in Comal, Hays, and Guadalupe Counties – Revised
Maps

To Whom It May Concern:

Crystal Clear Special Utility District (CCSUD) respectfully submits the revisions to the original maps sent under the application of CCSUD for a name change and to amend its sewer certificates of convenience in Comal, Hays, and Guadalupe counties.

The map revisions are in response to the PUC Interoffice Memorandum dated September 24, 2019. The revisions consist of the following:

- Exhibit 2 – The general location map has been revised to show the four proposed requested areas outlined with continuous polygons, and with additional nearby roads in the vicinity.
- The following revisions have been made to the detailed map for Westridge Oaks:
 - The scale has changed showing a closer view of the requested area
 - The boundary color was changed to red.
- Flemming Farms map – A detailed map for the proposed requested area has been included.

Please note that the name associated with Docket No. 49926 has been changed to reflect the recommended name to: *Application of Crystal Clear Special Utility District for a Name Change and to Amend its Sewer Certificates of Convenience in Comal, Hays, and Guadalupe Counties.*

Thank you for taking the time to review this submittal. Feel free to contact me at (830) 228-3301 or cbrayton@msengr.com if you have any questions or need additional details.

Regards,



M&S ENGINEERING
CIVIL | ELECTRICAL | STRUCTURAL | MEP

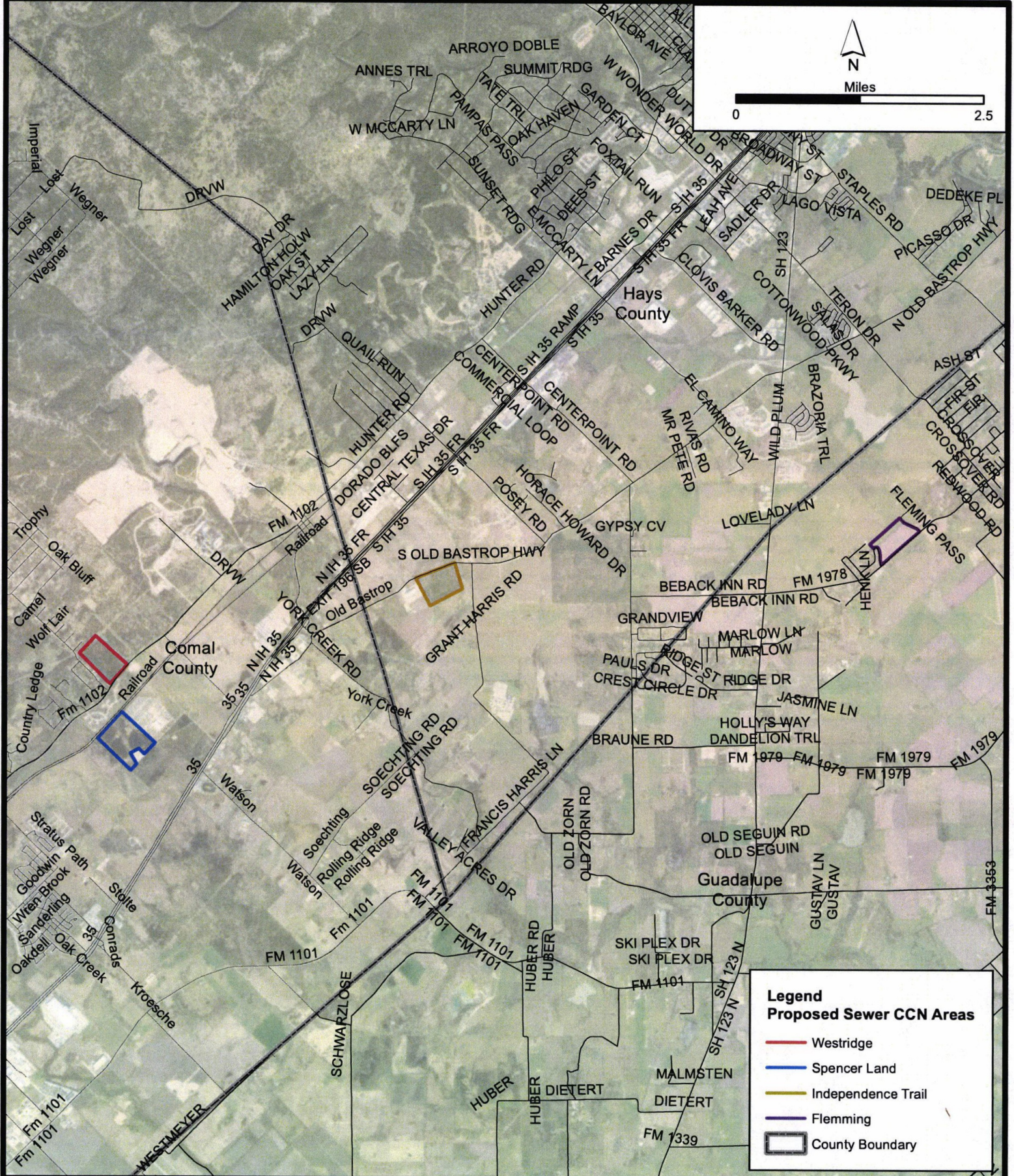
Carla Brayton

Carla Brayton

M&S Engineering, LLC

Enclosures: Exhibit 2 (general location map) revised map; Westridge Oaks revised detail map; and Flemming Farms detail map.

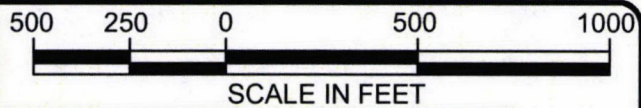
Cc: Mike Taylor, General Manager – Crystal Clear Special Utility District



Legend
Proposed Sewer CCN Areas

- Westridge
- Spencer Land
- Independence Trail
- Flemming
- County Boundary

EXH 2	JOB: 14CCSUD001		REVISIONS:		CRYSTAL CLEAR SUD PROPOSED SEWER CCN SERVICE AREAS	M&S ENGINEERING CIVIL ELECTRICAL STRUCTURAL MEP TEXAS PROFESSIONAL ENGINEERING FIRM # F-1394 WWW.MSENGR.COM (830) 228-5446
	DATE: JUNE 2019		DATE	DESCRIPTION		
	DRAWN: GS	PM:				
	DESIGN:	DM:				
	PEER:	OTHER:				



WASTE WATER
SERVICE AREA

1978

LJA Engineering, Inc.

7500 Rialto Boulevard
Building II, Suite 100
Austin, Texas 78735



Phone 512.439.4700
Fax 512.439.4716
FRN - F-1386

FLEMING FARMS

WASTE WATER SERVICE AREA

1 OF 1



SHEET

C0.0

**WESTRIDGE OAKS
DETAIL MAP
SCALE: 1"=500'**



2019



TX2 ENGINEERING
FIRM # 20787
CONTACT
845 FLORAL AVE, STE C
NEW BRAUNFELS, TX 78130
TEL: (816) 510-9151