



Control Number: 49691



Item Number: 43

Addendum StartPage: 0

DOCKET NO. 49691

2021 FEB 24 PM 4:17

FILED
FILING CLERK

APPLICATION OF PERRY WATER
SUPPLY CORPORATION AND TRI-
COUNTY SPECIAL UTILITY
DISTRICT FOR SALE, TRANSFER,
OR MERGER OF FACILITIES AND
CERTIFICATE RIGHTS IN FALLS,
MCLENNAN, ROBERTSON, AND
LIMESTONE COUNTIES

§
§
§ PUBLIC UTILITY COMMISSION
§ OF TEXAS
§
§

PROOF OF RECORDING

COMES NOW, Tri-County Special Utility District ("Tri-County SUD") and files this Proof of Record. In support thereof, the Tri-County SUD shows the following:

On the 10th day of December, 2020, the Commission issued Notice of Approval. Tri-County SUD was ordered to file Proof of Filing of Notice in compliance with TWC § 13.257(r) and (s) in Falls County, Texas. Pursuant to the order Tri-County SUD provides proof of said compliance as Exhibit "A."

Respectfully submitted,



Patricia Ferguson
Attorney for Tri-County SUD
State Bar No. 06918400
815 West 5th Street
Clifton, Texas 76634
(254) 675-8663
(254) 675-4567 (facsimile)
pferguson@bosquelaw.com

EXHIBIT A

Tri-County Special Utility District

Proposed Modifications to Existing Water CCN Boundaries shall be as follows:

Section A

Beginning at N31° 25' 00.51" and W96° 56' 15.15" on CR 105 approximately 1.48 miles West of the intersection of SH 6 and CR 105.

Thence West approximately 0.17 miles from the SH 6 and CR 105 intersection to a point at N31° 25' 42.18" and W96° 54' 47.52"

Section B

Beginning at N31° 26' 15.90" and W96° 55' 1.47" on SH 6 approximately 0.75 miles North of the intersection of SH 6 and CR 105.

Thence South approximately 0.58 miles to a point at N31° 25' 06.45" and W96° 54' 56.16" near the intersection of SH 6 and CR 128.

Thence South approximately 2.95 miles to a point at N31° 22' 38.56" and W96° 54' 13.01" near the intersection of SH 6 and FM 2307.

Thence South approximately 0.98 miles from the SH 6 and FM 2307 intersection to a point at N31° 21' 48.74" and W96° 53' 57.74".

Section C

Beginning at N31° 25' 01.05" and W96° 54' 55.40" on SH 6 approximately 0.09 miles South of the intersection of FM1240 and SH 6.

Thence West approximately 0.29 miles on CR 107 to a point at N31° 25' 01.17" and W96° 55' 13.96".

Section D

Beginning at N31° 25' 06.45" and W96° 54' 56.16" on SH 6 approximately 0.59 miles South of the intersection of SH 6 and CR 105.

Thence East approximately 1.82 miles to a point at N31° 25' 45.11" and W96° 53' 16.68" near the intersection of FM1240 and Perry Methodist Rd.

Thence East approximately 0.22 miles from the FM1240 and Perry Methodist Rd. intersection to a point at N31° 25' 44.15" and W96° 53' 04.66".

EXHIBIT A

Section E

Beginning at N31° 25' 45.11" and W96° 53' 16.68" on FM1240 approximately 1.82 miles East of the intersection of SH 6 and FM1240.

Thence North approximately 0.76 miles on Perry Methodist Rd to a point at N31° 26' 19.24" and W96° 53' 40.11".

Section F

Beginning at N31° 23' 51.97" and W96° 54' 36.16" on SH 6 approximately 0.09 miles South of the intersection of SH 6 and CR 121.

Thence West approximately 0.35 miles on CR 112 to a point at N31° 23' 42.78" and W96° 54' 54.68"

Section G

Beginning at N31° 22' 47.82" and W96° 54' 15.89" on SH 6 approximately 1.27 miles South of the intersection of SH 6 and 112.

Thence West approximately 0.08 miles to a point at N31° 22' 46.60" and W96° 54' 21.05" near the intersection of Private Dr and CR 116.

Thence South approximately 0.09 miles to a point at N31° 22' 41.74" and W96° 54' 19.79" on CR 116.

Section H

Beginning at N31° 22' 38.56" and W96° 54' 13.01" on SH 6 approximately 0.18 miles South of the intersection of SH 6 and CR 116.

Thence East approximately 0.67 miles to a point at N31° 22' 55.50" and W96° 53' 37.71" near the intersection of FM 2307 and CR 123.

Thence South approximately 0.71 miles to a point at N31° 22' 22.48" and W96° 53' 18.68" on CR 123.

Section I

Beginning at N31° 21' 48.74" and W96° 53' 57.74" on SH 6 approximately 0.99 miles South of the intersection of SH 6 and FM 2307.

Thence West approximately 0.57 miles to a point at N31° 21' 46.38" and W96° 54' 32.47" near the intersection of CR 115 and CR 116.

McLENNAN CO.
FALLS CO.

6 TEXAS

A - 1.65 MI.
N31° 25' 00.51"
W96° 56' 15.15"
10495195.0066
3355681.1378

B - 5.28 MI.
N31° 26' 15.90"
W96° 55' 01.47"
10503004.4843
3361828.2166

C - 0.28 MI.
N31° 25' 01.17"
W96° 55' 13.96"
10495424.1147
3360978.3846

D - 2.04 MI.
N31° 25' 42.18"
W96° 54' 47.52"
10499635.6922
3363140.3956

E - 0.75 MI.
N31° 26' 19.24"
W96° 53' 40.11"
10503559.0286
3368862.3451

F - 0.35 MI.
N31° 25' 01.05"
W96° 54' 55.40"
10495460.8733
3362586.3830

G - 0.18 MI.
N31° 23' 42.78"
W96° 54' 54.68"
10487559.1383
3362891.3635

H - 1.37 MI.
N31° 22' 47.82"
W96° 54' 15.89"
10482111.4865
3366422.5852

I - 0.57 MI.
N31° 22' 41.74"
W96° 54' 19.79"
10481487.3640
3366103.9757

JANUARY 2021
EXHIBIT B

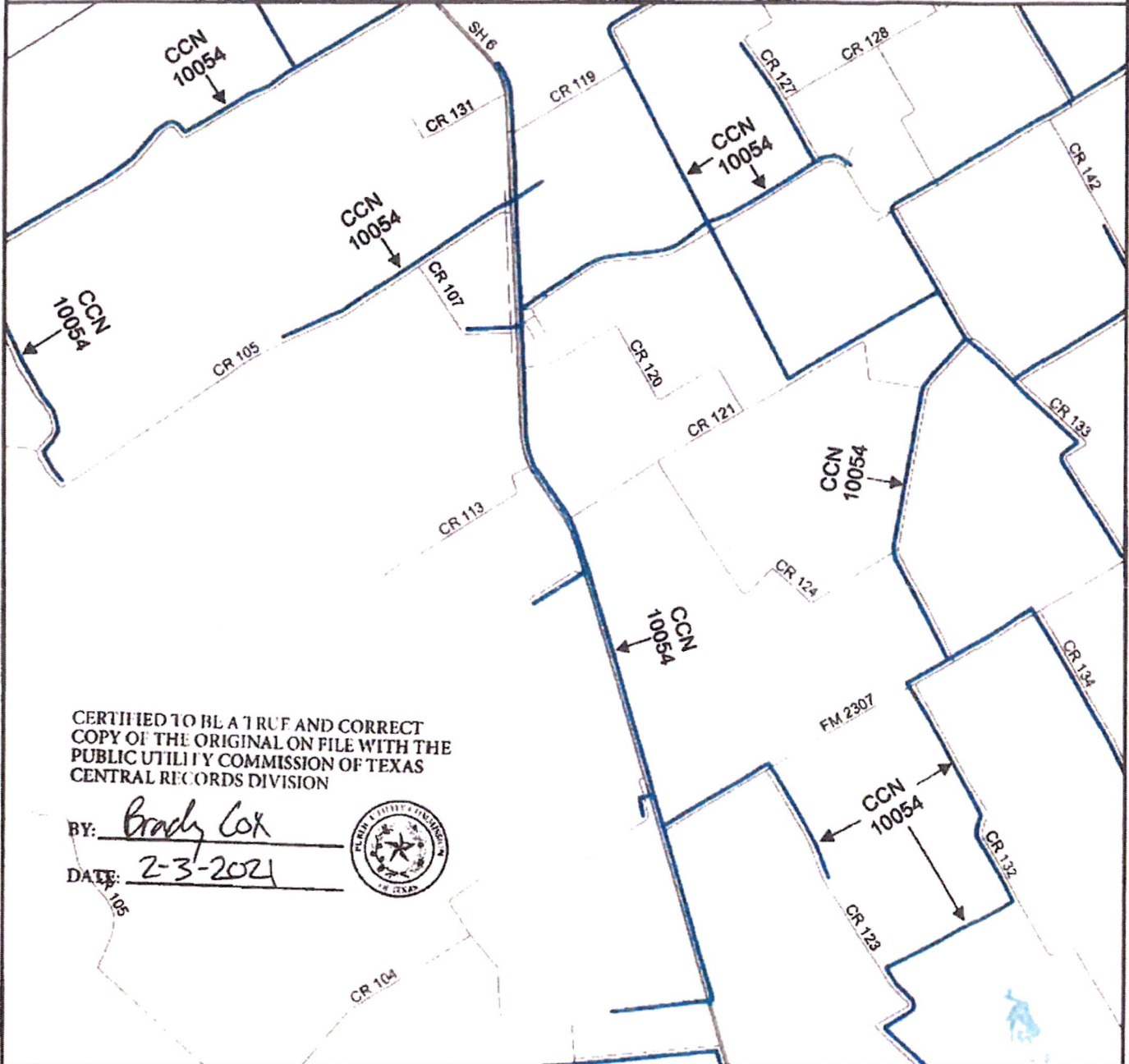
EXHIBIT A

Tri County Special Utility District
Portion of Water Facilities +200'

CCN No. 10054

PUC Docket No. 49691

Transferred all of Perry WSC, CCN No. 11129 in Falls County



CERTIFIED TO BE A TRUE AND CORRECT
COPY OF THE ORIGINAL ON FILE WITH THE
PUBLIC UTILITY COMMISSION OF TEXAS
CENTRAL RECORDS DIVISION

BY:

Brady Cox

DATE:

2-3-2021



Public Utility Commission of Texas
1701 N. Congress Ave
Austin, TX 78701

Water CCN
Facilities +200'

10054 - Tri County SUD

0 2,000 4,000
Feet



Map by: Komal Patel
Date created: July 6, 2020
Project Path: n:\vinalmapping\
49691TriCountySUD.mxd

EXHIBIT A

FILED _____ M

FEB 12 2021

CO. CLK. FALLS CO.

④ \$31

EXHIBIT A



**PATRICIA FERGUSON
& ASSOCIATES, LLC**
815 West Fifth Street
Clifton, Texas 76634-1519

NORTH TEXAS TX 750
12 FEB 2021 PM 1 L



B91307 03
\$0.716
US POSTAGE
FIRST-CLASS
0625000/212834
76634

Official Receipt for Recording in:

Falls County Clerk
PO Box 458
Marlin 75661

Issued To:

PATRICIA FERGUSON & ASSOCIATES, LLC
815 WEST 5TH STREET
CLIFTON TX 76634

Recording Fees

Filing Type	Number	Vol#	Page	Time	Recording Amount
Recordings	00026063	00335	00080	12:50:16p	31.00
					31.00

Collected Amounts

Payment Type	Amount
Check 9755	26.00
Check 9762	5.00
31.00	

Total Received : 31.00
Less Total Recordings: 31.00
Change Due 00

Thank You
ELIZABETH PEREZ - COUNTY CLERK

By - Sharon Scott

Receipt# Date Time
0097069 02/12/2021 12:50p