

CITY OF CELINA, TEXAS
NET POSITION BY COMPONENT
LAST TEN FISCAL YEARS
(Accrual basis of accounting)
(Unaudited)

Table 2

| | FISCAL YEAR | | | | | | | | | |
|---|---------------|---------------|---------------|---------------|---------------|---------------|---------------|---------------|---------------|---------------|
| | 2008 | 2009 | 2010 | 2011 | 2012 | 2013 | 2014 | 2015 | 2016 | 2017 |
| Governmental Activities | | | | | | | | | | |
| Net Investment in capital assets | \$ 8,079,648 | \$ 8,138,243 | \$ 8,165,734 | \$ 7,968,691 | \$ 5,724,939 | \$ 7,800,853 | \$ 7,667,954 | \$ 8,693,312 | \$ 13,138,978 | \$ 13,184,763 |
| Restricted | 715,530 | 489,022 | 624,480 | 684,336 | 3,895,476 | 2,560,845 | 4,535,511 | 4,675,044 | 5,340,173 | 5,848,514 |
| Unrestricted | 807,941 | 929,815 | 1,056,451 | 1,372,081 | 742,974 | 2,086,188 | 3,900,225 | 6,325,979 | 7,893,951 | 11,575,127 |
| Total Governmental Activities Net Position | 9,603,119 | 9,557,080 | 9,846,665 | 10,025,108 | 10,363,389 | 12,447,886 | 16,103,690 | 19,694,335 | 26,373,102 | 30,608,404 |
| Business Type Activities | | | | | | | | | | |
| Net Investment in Capital Assets | \$ 4,665,800 | \$ 5,868,123 | \$ 6,289,011 | \$ 6,830,370 | \$ 6,717,653 | \$ 7,485,220 | \$ 9,589,572 | \$ 11,575,656 | 12,078,113 | 13,079,265 |
| Restricted | | | | | | | | | | |
| Unrestricted | 1,651,702 | 568,021 | (234,357) | 43,166 | 644,272 | 887,007 | 1,103,837 | 2,120,144 | 1,733,702 | 3,171,397 |
| Total Business Type Activities Net Position | 6,317,502 | 6,436,144 | 6,054,654 | 6,873,536 | 7,361,925 | 8,372,227 | 10,693,409 | 13,695,800 | 13,811,815 | 16,250,662 |
| Primary Government | | | | | | | | | | |
| Net Investment in Capital Assets | \$ 12,745,448 | \$ 14,006,366 | \$ 14,454,745 | \$ 14,799,061 | \$ 12,442,592 | \$ 15,286,073 | \$ 17,257,526 | \$ 20,268,968 | \$ 25,217,091 | \$ 26,264,028 |
| Restricted | 715,530 | 489,022 | 624,480 | 684,336 | 3,895,476 | 2,560,845 | 4,535,511 | 4,675,044 | 5,340,173 | 5,848,514 |
| Unrestricted | 2,459,643 | 1,497,836 | 822,094 | 1,415,247 | 1,387,246 | 2,973,195 | 5,004,062 | 8,446,123 | 9,627,653 | 14,746,524 |
| Total Primary Government Net Position | 15,920,621 | 15,993,224 | 15,901,319 | 16,898,644 | 17,725,314 | 20,820,113 | 26,797,099 | 33,390,135 | 40,184,917 | 46,859,066 |

CITY OF CELINA, TEXAS
CHANGES IN NET POSITION
LAST TEN FISCAL YEARS
(Accrual basis of accounting)
(Unaudited)

Table 3

| | FISCAL YEAR | | | | |
|---|--------------|-------------|-------------|-------------|-------------|
| | 2008 | 2009 | 2010 | 2011 | 2012 |
| EXPENSES | | | | | |
| Governmental Activities | | | | | |
| Administration | \$ 1,120,928 | \$ 967,929 | \$ 896,155 | \$ 993,291 | \$ 799,116 |
| Judicial | 69,664 | 73,299 | 70,102 | 70,205 | 70,066 |
| Fire and Emergency Services | 867,511 | 1,159,151 | 1,068,864 | 1,169,196 | 1,176,359 |
| Development Services | 291,431 | 381,151 | 329,794 | 363,133 | 472,329 |
| Public Works | 259,943 | 395,801 | 397,095 | 369,952 | 366,560 |
| Police Department | 635,148 | 817,360 | 892,283 | 938,031 | 749,274 |
| Parks and Recreation | 419,001 | 423,260 | 406,446 | 362,409 | 503,298 |
| Library | - | - | 129,637 | 126,482 | 126,116 |
| Infrastructure | 208,374 | 208,374 | 208,373 | 418,484 | 207,097 |
| Bond Issuance Costs | - | - | - | - | 99,726 |
| Main Street Program | 142,224 | 47,976 | 60,868 | 57,880 | |
| Interest and Fiscal Charges | 363,193 | 353,236 | 336,386 | 326,153 | 358,718 |
| Total Governmental Activities Expenses | 4,377,417 | 4,827,537 | 4,796,003 | 5,195,216 | 4,928,659 |
| Business Type Activities | | | | | |
| Water, Sewer and Sanitation Services | 3,007,422 | 3,168,584 | 3,425,151 | 3,306,335 | 3,572,057 |
| Total Business Type Activities Expenses | 3,007,422 | 3,168,584 | 3,425,151 | 3,306,335 | 3,572,057 |
| Total Primary Government Expenses | 7,384,839 | 7,996,121 | 8,221,154 | 8,501,551 | 8,500,716 |
| PROGRAM REVENUES | | | | | |
| Governmental Activities | | | | | |
| Charges for Services | 1,074,537 | 496,882 | 566,637 | 733,947 | 1,042,829 |
| Operating Grants/Contributions | 239,605 | 388,525 | 283,849 | 295,140 | 231,301 |
| Capital Grants/Contributions | | | 144,460 | 391,623 | |
| Total Governmental Activities Program Revenues | 1,314,142 | 885,407 | 994,946 | 1,420,710 | 1,274,130 |
| Business Type Activities | | | | | |
| Charges for Services: | | | | | |
| Water, Sewer and Sanitation Services | 2,976,759 | 3,186,377 | 3,360,517 | 4,190,142 | 4,377,926 |
| Capital Grants/Contributions | | 350,000 | | | 70,000 |
| Total Business Type Activities Program Revenues | 2,976,759 | 3,536,377 | 3,360,517 | 4,190,142 | 4,447,926 |
| Total Primary Government Program Revenues | 4,290,901 | 4,421,784 | 4,355,463 | 5,610,852 | 5,722,056 |
| NET (EXPENSE) REVENUES | | | | | |
| Governmental Activities | (3,063,275) | (3,942,130) | (3,801,057) | (3,774,506) | (3,654,529) |
| Business Type Activities | (30,663) | 367,793 | (64,634) | 883,807 | 875,869 |
| Total Primary Government Program Revenues | | | | | |
| Net Expenses | (3,093,938) | (3,574,337) | (3,865,691) | (2,890,699) | (2,778,660) |
| GENERAL REVENUES AND OTHER CHANGES IN NET POSITION | | | | | |
| Governmental Activities | | | | | |
| Taxes: | | | | | |
| Ad Valorem | 2,717,779 | 3,015,151 | 3,015,298 | 2,967,206 | 3,021,800 |
| Sales | 284,026 | 249,661 | 271,670 | 290,835 | 338,053 |
| Franchise | 213,333 | 222,257 | 253,500 | 355,576 | 299,999 |
| Other | 227,731 | 109,022 | 225,174 | 264,332 | 479,886 |
| Transfers | 300,000 | 300,000 | 325,000 | 75,000 | 95,000 |
| Total Governmental Activities | 3,742,869 | 3,896,091 | 4,090,642 | 3,952,949 | 4,234,738 |
| Business Type Activities | | | | | |
| Other | 163,711 | 50,849 | 8,144 | 10,075 | 28,306 |
| Transfers | (300,000) | (300,000) | (325,000) | (75,000) | (95,000) |
| Total Business Type Activities | (136,289) | (249,151) | (316,856) | (64,925) | (66,694) |
| Total Primary Government Revenues | 3,606,580 | 3,646,940 | 3,773,786 | 3,888,024 | 4,168,044 |
| CHANGES IN NET POSITION | | | | | |
| Governmental Activities | 679,594 | (46,039) | 289,585 | 178,443 | 580,209 |
| Business Type Activities | (166,952) | 118,642 | (381,490) | 818,882 | 809,175 |
| Total Primary Government Program Net Expenses | 512,642 | 72,603 | (91,905) | 997,325 | 1,389,384 |

CITY OF CELINA, TEXAS
CHANGES IN NET POSITION
LAST TEN FISCAL YEARS
(Accrual basis of accounting)
(Unaudited)

Table 3

| EXPENSES | FISCAL YEAR | | | | |
|---|--------------------|-------------------|-------------------|--------------------|--------------------|
| | 2013 | 2014 | 2015 | 2016 | 2017 |
| Governmental Activities | | | | | |
| Administration | \$ 950,109 | \$ 1,203,576 | \$ 1,170,613 | \$ 1,592,794 | \$ 2,624,918 |
| Judicial | 79,863 | 88,531 | 84,853 | 102,803 | 155,521 |
| Fire and Emergency Services | 1,541,465 | 1,213,416 | 1,453,477 | 1,957,077 | 2,414,778 |
| Development Services | 417,119 | 708,220 | 529,067 | 683,599 | 887,990 |
| Public Works | 515,098 | 725,922 | 824,527 | 1,080,661 | 1,104,523 |
| Police Department | 803,634 | 806,191 | 1,114,266 | 1,532,829 | 1,877,574 |
| Parks and Recreation | 556,654 | 448,202 | 886,212 | 1,084,077 | 1,263,538 |
| Library | 134,625 | 134,815 | 140,104 | 152,664 | 169,326 |
| Infrastructure | 203,273 | 202,699 | 198,868 | 211,300 | 353,119 |
| Main Street Program | 135,388 | 26,869 | 70,510 | 65,279 | 55,176 |
| Bond Issuance Costs | 399,992 | 72,326 | | | |
| Interest and Fiscal Charges | 457,748 | 585,469 | 635,090 | 710,249 | 787,001 |
| Total Governmental Activities Expenses | 6,194,968 | 6,216,236 | 7,107,587 | 9,173,332 | 11,693,464 |
| Business Type Activities | | | | | |
| Water, Sewer and Sanitation Services | 3,464,334 | 3,496,782 | 4,284,809 | 8,508,496 | \$ 10,811,473 |
| Total Business Type Activities Expenses | 3,464,334 | 3,496,782 | 4,284,809 | 8,508,496 | 10,811,473 |
| Total Primary Government Expenses | 9,659,302 | 9,713,018 | 11,392,396 | 17,681,828 | 22,504,937 |
| PROGRAM REVENUES | | | | | |
| Governmental Activities | | | | | |
| Charges for Services | 1,113,468 | 2,082,964 | 3,755,293 | 4,265,112 | 6,391,343 |
| Operating Grants/Contributions | | 61,432 | 214,115 | 368,784 | 356,258 |
| Capital Grants/Contributions | 2,344,763 | 2,403,093 | 625,237 | 2,578,809 | 1,011,625 |
| Total Governmental Activities Program Revenues | 3,458,231 | 4,547,489 | 4,594,645 | 7,212,705 | 7,759,226 |
| Business Type Activities | | | | | |
| Charges for Services: | | | | | |
| Water, Sewer and Sanitation Services | 4,781,510 | 6,154,311 | 7,518,331 | 10,057,113 | 13,590,654 |
| Capital Grants/Contributions | | | 45,289 | 800,100 | |
| Total Business Type Activities Program Revenues | 4,781,510 | 6,154,311 | 7,563,620 | 10,857,213 | 13,590,654 |
| Total Primary Government Program Revenues | 8,239,741 | 10,701,800 | 12,158,265 | 18,069,918 | 21,349,880 |
| NET (EXPENSE) REVENUES | | | | | |
| Governmental Activities | (2,736,737) | (1,668,747) | (2,512,942) | (1,960,627) | (3,934,238) |
| Business Type Activities | 1,317,176 | 2,657,529 | 3,278,811 | 2,348,717 | 2,779,181 |
| Total Primary Government Program Revenues | | | | | |
| Net Expenses | (1,419,561) | 988,782 | 765,869 | 388,090 | (1,155,057) |
| GENERAL REVENUES AND OTHER CHANGES IN NET POSITION | | | | | |
| Governmental Activities | | | | | |
| Taxes: | | | | | |
| Ad Valorem | 3,129,835 | 3,333,015 | 3,739,841 | 4,458,401 | 5,362,919 |
| Sales | 384,289 | 505,221 | 603,949 | 733,881 | 958,350 |
| Franchise | 325,167 | 320,805 | 364,763 | 429,102 | 370,949 |
| Other | 636,943 | 817,733 | 438,820 | 671,241 | 985,322 |
| Transfers | 345,000 | 348,050 | 395,000 | 2,346,769 | 492,000 |
| Total Governmental Activities | 4,821,234 | 5,324,824 | 5,542,373 | 8,639,394 | 8,169,540 |
| Business Type Activities | | | | | |
| Other | 38,126 | 11,703 | 39,470 | 114,067 | 151,666 |
| Transfers | (345,000) | (348,050) | (395,000) | (2,346,769) | (492,000) |
| Total Business Type Activities | (306,874) | (336,347) | (355,530) | (2,232,702) | (340,334) |
| Total Primary Government Revenues | 4,514,360 | 4,988,477 | 5,186,843 | 6,406,692 | 7,829,206 |
| CHANGES IN NET POSITION | | | | | |
| Governmental Activities | 2,084,497 | 3,656,077 | 3,029,431 | 6,678,767 | 4,235,302 |
| Business Type Activities | 1,010,302 | 2,321,182 | 2,923,281 | 116,015 | 2,438,847 |
| Total Primary Government Program Net Expenses | 3,094,799 | 5,977,259 | 5,952,712 | 6,794,782 | 6,674,149 |

CITY OF CELINA, TEXAS
GOVERNMENT ACTIVITIES - TAX REVENUES BY SOURCE
LAST TEN FISCAL YEARS

Table 4

(Accrual basis of accounting)
(Unaudited)

| FISCAL YEAR | PROPERTY TAX | SALES TAX | FRANCHISE TAX | TOTAL |
|------------------------|-------------------------|----------------------|--------------------------|--------------|
| 2008 | 2,772,674 | 284,026 | 213,333 | \$ 3,270,033 |
| 2009 | 3,042,225 | 249,661 | 222,257 | \$ 3,514,143 |
| 2010 | 3,015,507 | 271,670 | 253,500 | \$ 3,540,677 |
| 2011 | 2,975,142 | 290,835 | 355,576 | \$ 3,621,553 |
| 2012 | 3,019,885 | 338,053 | 299,999 | \$ 3,657,937 |
| 2013 | 3,154,251 | 384,289 | 325,167 | \$ 3,863,707 |
| 2014 | 3,314,591 | 505,221 | 320,805 | \$ 4,140,617 |
| 2015 | 3,754,816 | 603,949 | 364,763 | \$ 4,723,528 |
| 2016 | 4,453,862 | 733,881 | 429,102 | \$ 5,616,845 |
| 2017 | 5,374,888 | 958,350 | 370,949 | \$ 6,704,187 |

CITY OF CELINA, TEXAS
FUND BALANCES, GOVERNMENTAL FUNDS
LAST TEN FISCAL YEARS
(Modified accrual basis of accounting)
(Unaudited)

Table 5

| | FISCAL YEAR | | | | | | | | | |
|------------------------------------|-------------|---------|---------|-----------|-----------|-----------|------------|-----------|-----------|------------|
| | 2008 | 2009 | 2010 | 2011 | 2012 | 2013 | 2014 | 2015 | 2016 | 2017 |
| General Fund | | | | | | | | | | |
| Nonspendable: | | | | | | | | | | |
| Prepays | 105,827 | | | | | | 20,784 | 19,941 | 2,230 | 3,013 |
| Unassigned | 543,297 | 775,120 | 864,793 | 1,052,641 | 1,694,945 | 2,187,130 | 3,037,176 | 4,585,888 | 7,130,005 | 6,562,842 |
| Total General Fund | 649,124 | 775,120 | 864,793 | 1,052,641 | 1,694,945 | 2,187,130 | 3,057,960 | 4,605,829 | 7,132,235 | 6,565,855 |
| All Other Government Funds | | | | | | | | | | |
| Restricted for: | | | | | | | | | | |
| Debt Service | 671,693 | 458,260 | 593,598 | 473,465 | 453,145 | 515,274 | 541,370 | 646,075 | 901,524 | 1,369,343 |
| Capital Projects | | | | 214,348 | 2,309,071 | 6,144,848 | 10,880,463 | 7,021,861 | 7,083,988 | 13,033,951 |
| Assigned for use in specific funds | | | | | | | | | | 168,342 |
| Total All Other Governmental Funds | 671,693 | 458,260 | 593,598 | 687,813 | 2,762,216 | 6,660,122 | 11,421,833 | 7,667,936 | 7,985,512 | 14,571,636 |

CITY OF CELINA, TEXAS
CHANGES IN FUND BALANCES, GOVERNMENTAL FUNDS
LAST TEN FISCAL YEARS
 (Modified accrual basis of accounting)
 (Unaudited)

Table 6

| | FISCAL YEAR | | | | |
|---|--------------------|------------------|------------------|------------------|------------------|
| | 2008 | 2009 | 2010 | 2011 | 2012 |
| REVENUES | | | | | |
| Property Taxes | 2,772,674 | 3,042,225 | 3,015,507 | 2,975,142 | 3,019,885 |
| Franchise Taxes | 213,333 | 222,257 | 253,500 | 355,576 | 299,999 |
| Sales Taxes | 284,026 | 249,661 | 271,670 | 290,835 | 338,053 |
| Permits/Inspection Fees | 169,678 | 94,524 | 172,173 | 257,605 | 340,547 |
| Component Unit Contributions | | | 165,000 | 165,000 | 340,000 |
| Development Fees | 118,616 | 12,533 | 45,894 | 16,286 | 56,411 |
| Fire Department/EMS Fees | 157,133 | 224,373 | 180,203 | 262,435 | 244,505 |
| Fines | 133,407 | 109,891 | 93,867 | 95,016 | 186,302 |
| Special Events and Donations | 237,342 | 150,211 | 134,565 | 155,935 | 175,346 |
| Park Fees | 17,983 | 18,135 | 24,786 | 18,907 | 85,111 |
| Other Income | 557,072 | 75,563 | 185,459 | 319,381 | 120,005 |
| Interest Income | 48,317 | 33,459 | 19,175 | 16,574 | 43,076 |
| Grants | 14,418 | 238,314 | 149,284 | 294,205 | 32,760 |
| Total Revenues | 4,723,999 | 4,471,146 | 4,711,083 | 5,222,897 | 5,282,000 |
| EXPENDITURES | | | | | |
| Administration | 1,101,213 | 956,157 | 880,101 | 979,059 | 774,209 |
| Judicial | 69,664 | 73,299 | 70,102 | 70,205 | 70,066 |
| Fire and EMS | 778,751 | 1,060,228 | 1,049,716 | 1,140,328 | 1,062,174 |
| Development Services | 291,431 | 381,151 | 329,794 | 363,133 | 472,329 |
| Public Works | 245,448 | 392,020 | 392,527 | 568,890 | 373,302 |
| Police Department | 594,680 | 780,835 | 865,304 | 913,898 | 729,737 |
| Parks and Rec | 224,295 | 235,149 | 222,959 | 176,313 | 288,239 |
| Library | | | 129,637 | 126,482 | 126,116 |
| Main Street | 142,224 | 47,976 | 60,868 | 57,880 | 99,726 |
| Capital Outlay | 274,290 | 213,594 | 474,465 | 1,464,171 | 1,938,419 |
| Debt Service: | | | | | |
| Principal Retirement | 426,980 | 372,216 | 251,798 | 257,590 | 363,145 |
| Interest and Fiscal Charges | 359,310 | 348,759 | 331,881 | 312,974 | 379,859 |
| Bond Issuance Costs | 100,885 | | | 33,292 | 159,933 |
| Total Expenditures | 4,609,171 | 4,861,384 | 5,059,152 | 6,464,215 | 6,837,254 |
| OTHER FINANCING SOURCES (USES) | | | | | |
| Sale of Assets | 18,798 | 2,801 | 73,283 | 48,381 | 30,403 |
| Capital Leases | 316,986 | | 174,797 | | |
| Note/Bond Proceeds | 97,003 | | | 1,400,000 | 4,146,558 |
| Transfers In (Out) | 300,000 | 300,000 | 325,000 | 75,000 | 95,000 |
| Total Other Financing Sources (Uses) | 732,787 | 302,801 | 573,080 | 1,523,381 | 4,271,961 |
| NET CHANGE IN FUND BALANCES | 847,615 | (87,437) | 225,011 | 282,063 | 2,716,707 |
| Debt Service as a percentage of Non-Capital Expenditures | 20.47% | 15.51% | 12.73% | 12.08% | 18.43% |

CITY OF CELINA, TEXAS
CHANGES IN FUND BALANCES, GOVERNMENTAL FUNDS
LAST TEN FISCAL YEARS
 (Modified accrual basis of accounting)
 (Unaudited)

Table 6
 (cont.)

| | FISCAL YEAR | | | | |
|---|--------------------|------------------|--------------------|-------------------|-------------------|
| REVENUES | 2013 | 2014 | 2015 | 2016 | 2017 |
| Property Taxes | 3,154,251 | 3,314,591 | 3,754,816 | 4,453,862 | 5,374,888 |
| Franchise Taxes | 325,167 | 320,805 | 364,763 | 429,102 | 370,949 |
| Sales Taxes | 384,289 | 505,221 | 603,949 | 733,881 | 958,350 |
| Permits/Inspection Fees | 455,454 | 1,321,510 | 1,767,856 | 2,357,289 | 3,959,914 |
| Component Unit Contributions | 320,000 | 170,000 | 320,000 | 200,000 | 200,000 |
| Development Fees | 124,743 | 239,739 | 924,249 | 509,870 | 1,245,943 |
| Fire Department/EMS Fees | 174,678 | 196,753 | 241,005 | 910,360 | 817,691 |
| Fines | 197,248 | 155,962 | 254,370 | 283,758 | 209,806 |
| Special Events and Donations | 142,682 | 305,430 | 221,696 | 373,421 | 250,214 |
| Park Fees/Developer Contributions | 161,345 | 169,000 | 602,626 | 2,215,582 | 1,178,028 |
| Other Income | 85,140 | 296,867 | 92,349 | 397,657 | 508,311 |
| Interest Income | 63,021 | 90,424 | 111,901 | 111,776 | 183,077 |
| Grants | 2,344,763 | 2,404,258 | 519,701 | 518,784 | 1,570 |
| Total Revenues | 7,932,781 | 9,490,560 | 9,779,281 | 13,495,342 | 15,258,741 |
| EXPENDITURES | | | | | |
| Administration | 870,419 | 1,106,865 | 1,133,574 | 1,458,673 | 2,433,180 |
| Judicial | 79,863 | 88,531 | 84,853 | 99,803 | 153,213 |
| Fire and EMS | 1,057,979 | 1,083,464 | 1,316,275 | 1,731,896 | 2,041,407 |
| Development Services | 417,119 | 702,862 | 524,712 | 675,267 | 868,862 |
| Public Works | 508,439 | 505,659 | 806,788 | 1,023,572 | 943,895 |
| Police Department | 741,361 | 770,254 | 1,046,160 | 1,414,488 | 1,688,094 |
| Parks and Rec | 349,742 | 443,625 | 667,908 | 819,539 | 959,343 |
| Library | 134,625 | 135,315 | 140,857 | 153,752 | 165,768 |
| Main Street | 135,388 | 26,869 | 70,510 | 65,279 | 55,176 |
| Capital Outlay | 3,977,688 | 1,421,925 | 5,253,351 | 8,542,536 | 3,656,718 |
| Debt Service: | | | | | |
| Principal Retirement | 500,525 | 510,445 | 678,366 | 841,124 | 1,005,685 |
| Interest and Fiscal Charges | 490,987 | 610,693 | 669,480 | 724,025 | 782,253 |
| Bond Issuance Costs | 399,992 | 72,326 | - | | 74,569 |
| Total Expenditures | 9,664,127 | 7,478,833 | 12,392,834 | 17,549,954 | 14,828,163 |
| OTHER FINANCING SOURCES (USES) | | | | | |
| Sale of Assets | 26,100 | 15,279 | 12,525 | 41,825 | 634,597 |
| Capital Leases | 30,752 | | | | |
| Note/Bond Proceeds | 5,719,585 | 3,257,485 | - | 4,510,000 | 4,462,569 |
| Transfers In (Out) | 345,000 | 348,050 | 395,000 | 2,346,769 | 492,000 |
| Total Other Financing Sources (Uses) | 6,121,437 | 3,620,814 | 407,525 | 6,898,594 | 5,589,166 |
| NET CHANGE IN FUND BALANCES | 4,390,091 | 5,632,541 | (2,206,028) | 2,843,982 | 6,019,744 |
| Debt Service as a percentage of Non-Capital Expenditures | 24.47% | 19.70% | 18.88% | 17.38% | 16.67% |

**CITY OF CELINA, TEXAS
 ASSESSED VALUE OF TAXABLE PROPERTY
 (PER \$100 OF ASSESSED VALUE)
 LAST TEN FISCAL YEARS (UNAUDITED)**

Table 7

| Fiscal Year | Residential Property | Commercial Property | Lots, Land and Other Personal Property | Less: Tax- Exempt Property | Total Taxable Assessed Value ^a |
|--------------------|---------------------------------|--------------------------------|---|---|--|
| 2008 | \$ 306,966,493 | \$ 54,654,199 | \$ 201,218,964 | \$ 144,014,968 | \$418,824,688 |
| 2009 | \$ 349,736,057 | \$ 62,448,332 | \$ 234,424,625 | \$ 183,282,031 | \$463,326,983 |
| 2010 | \$ 358,572,013 | \$ 66,190,702 | \$ 221,578,739 | \$ 182,142,657 | \$464,198,797 |
| 2011 | \$ 359,890,613 | \$ 61,701,232 | \$ 224,208,222 | \$ 191,735,580 | \$454,064,487 |
| 2012 | \$ 360,401,332 | \$ 68,081,956 | \$ 306,201,737 | \$ 273,053,137 | \$461,631,888 |
| 2013 | \$ 373,794,705 | \$ 75,872,011 | \$ 301,674,780 | \$ 269,111,106 | \$482,230,390 |
| 2014 | \$ 405,448,051 | \$ 72,762,134 | \$ 313,187,046 | \$ 282,701,395 | \$508,695,836 |
| 2015 | \$ 442,644,620 | \$ 77,643,093 | \$ 366,072,912 | \$ 331,468,313 | \$554,892,312 |
| 2016 | \$ 522,831,716 | \$ 88,623,690 | \$ 436,445,371 | \$ 387,032,507 | \$660,868,270 |
| 2017 | \$ 658,104,526 | \$ 198,645,927 | \$ 466,991,955 | \$ 100,785,522 | \$872,961,920 |

Source: Collin County Central Appraisal District

Note: Property is reassessed annually at actual value; therefore, the assessed values are equal to the actual values. Tax rates are per \$100 of assessed value.

^a Includes adjustments to certified rolls
 Fiscal Year reports Certified Tax Report from prior calendar year

**CITY OF CELINA, TEXAS
DIRECT AND OVERLAPPING PROPERTY TAX RATES
PER \$100 OF ASSESSED VALUE
LAST TEN FISCAL YEARS (UNAUDITED)**

Table 8

| <div>City Direct Rates</div> | | | | | <div>Overlapping Rates</div> | | | | |
|------------------------------|-----------------------|--------|-----------------------|--------|------------------------------|---------------|----------------|---------------|-------------------|
| Fiscal Year | Operating/ General | | General Obligation | | Total Direct | Celina ISD | Prosper ISD | Collin County | |
| | Rate | | Debt Service | | | | | County | Community College |
| 2008 | \$ | 0.5071 | \$ | 0.1479 | \$ 0.6550 | \$ 1.5190 | \$ 1.6700 | \$ 0.2450 | \$ 0.0870 |
| 2009 | | 0.5415 | | 0.1035 | \$ 0.6450 | 1.5400 | 1.6700 | 0.2425 | 0.0865 |
| 2010 | | 0.5274 | | 0.1176 | \$ 0.6450 | 1.5400 | 1.6400 | 0.2425 | 0.0863 |
| 2011 | | 0.5849 | | 0.0601 | \$ 0.6450 | 1.6400 | 1.6300 | 0.2400 | 0.0863 |
| 2012 | | 0.5652 | | 0.0798 | \$ 0.6450 | 1.6400 | 1.6700 | 0.2400 | 0.0863 |
| 2013 | | 0.4755 | | 0.1695 | \$ 0.6450 | 1.6400 | 1.6700 | 0.2400 | 0.0863 |
| 2014 | | 0.4652 | | 0.1834 | \$ 0.6450 | 1.6400 | 1.6700 | 0.2375 | 0.0836 |
| 2015 | | 0.4327 | | 0.2123 | \$ 0.6450 | 1.6400 | 1.6700 | 0.2350 | 0.0820 |
| 2016 | | 0.4335 | | 0.2115 | \$ 0.6450 | 1.6400 | 1.6700 | 0.2250 | 0.0820 |
| 2017 | | 0.4233 | | 0.2217 | \$ 0.6450 | 1.6400 | 1.6700 | 0.2250 | 0.0820 |

Source: Collin County Appraisal District

CITY OF CELINA, TEXAS
 PRINCIPAL PROPERTY TAX PAYERS
 CURRENT YEAR AND TEN YEARS AGO (UNAUDITED)

Table 9

| 2017 | | | | 2007 | | | |
|-----------------------------|------------------------|------|--------------------------------------|-----------------------------------|------------------------|------|--------------------------------------|
| Taxpayer | Taxable Assessed Value | Rank | Percentage of Taxable Assessed Value | Taxpayer | Taxable Assessed Value | Rank | Percentage of Taxable Assessed Value |
| Celina 682 Partners LP | \$ 35,291,074 | 1 | 5.34% | Prusak Family Limited Partnership | \$ 4,167,178 | 1 | 1.46% |
| Celina Development LLC | \$ 20,472,319 | 2 | 3.10% | TXI Operations LP | \$ 4,033,232 | 2 | 1.42% |
| CTMGT Frontier 80 LLC | \$ 12,501,360 | 3 | 1.89% | Wilbow-Celina Dev Corp | \$ 2,768,352 | 3 | 0.97% |
| Lennar Homes of Texas Land | \$ 9,468,979 | 4 | 1.43% | Blue Star Land LP | \$ 2,613,600 | 4 | 0.92% |
| Sunshine Development Group | \$ 8,245,562 | 5 | 1.25% | FINI Enterprises | \$ 2,203,619 | 5 | 0.77% |
| First Texas Homes | \$ 7,158,309 | 6 | 1.08% | 289/Carter Ranch Retail LTD | \$ 2,162,728 | 6 | 0.76% |
| Celina Town Center LTD | \$ 6,343,753 | 7 | 0.96% | Celina Crossing No. 1 LP | \$ 1,944,344 | 7 | 0.68% |
| Move It Storage Celina LLC | \$ 5,713,476 | 8 | 0.86% | Scoggins Richard L | \$ 1,937,610 | 8 | 0.68% |
| Chemtrade Sulfate Chemicals | \$ 4,884,371 | 9 | 0.74% | Secure RV Storage LTD | \$ 1,703,309 | 9 | 0.60% |
| TXI Operations LP | \$ 4,720,105 | 10 | 0.71% | Celina Real Estate LP | \$ 1,498,762 | 10 | 0.53% |
| TOTAL | \$ 114,799,308 | | 17.37% | TOTAL | \$ 25,032,734 | | 8.79% |

| | | |
|--------------------------|----------------|----------------|
| Total Assessed Valuation | \$ 872,961,920 | \$ 284,847,298 |
|--------------------------|----------------|----------------|

Source: Collin County Appraisal District

Notes: Tax Payers are assessed on January 1, 2016 for the 2017 fiscal year and January 1, 2006 for the 2007 fiscal year.

CITY OF CELINA, TEXAS
PROPERTY TAX LEVIES AND COLLECTIONS
(UNAUDITED)

Table 10

| Fiscal Year | Total Tax Levy for Fiscal Year | Collected within the Fiscal Year of the Levy | | Collections in Subsequent Years | Total Collections to Date | |
|-------------|-----------------------------------|--|-----------|------------------------------------|---------------------------|-----------|
| | | Amount | % of Levy | | Amount | % of Levy |
| 2008 | \$ 2,744,300 | \$ 2,741,184 | 99.89% | \$ 40,383 | \$ 2,781,566 | 101.36% |
| 2009 | \$ 2,966,311 | \$ 2,954,699 | 99.61% | \$ 104,285 | \$ 3,058,984 | 103.12% |
| 2010 | \$ 2,921,020 | \$ 2,972,226 | 101.75% | \$ 54,764 | \$ 3,026,990 | 103.63% |
| 2011 | \$ 2,909,571 | \$ 2,924,749 | 100.52% | \$ 64,205 | \$ 2,988,954 | 102.73% |
| 2012 | \$ 2,947,783 | \$ 2,957,229 | 100.32% | \$ 72,899 | \$ 3,030,128 | 102.79% |
| 2013 | \$ 3,102,330 | \$ 3,106,333 | 100.13% | \$ 59,493 | \$ 3,165,825 | 102.05% |
| 2014 | \$ 3,263,030 | \$ 3,267,776 | 100.15% | \$ 49,606 | \$ 3,317,382 | 101.67% |
| 2015 | \$ 3,549,295 | \$ 3,629,138 | 102.25% | \$ 135,675 | \$ 3,764,813 | 106.07% |
| 2016 | \$ 4,164,231 | \$ 4,261,734 | 102.34% | \$ 196,388 | \$ 4,458,122 | 107.06% |
| 2017 | \$ 5,064,321 | \$ 5,396,743 | 106.56% | \$ 122,465 | \$ 5,519,208 | 108.98% |

Source: Collin County Tax Assessor Collector

CITY OF CELINA, TEXAS
RATIO OF OUTSTANDING DEBT BY TYPE
LAST TEN FISCAL YEARS
(UNAUDITED)

Table 11

| Fiscal Year | Governmental Activities | | | | Business - Type Activities | | | | Revenue Bonds | Total Primary Government | % of Personal Income | Per Capita* |
|-------------|--------------------------|----------------------------|-----------|-------------------|----------------------------|----------------------------|-----------|-------------------|---------------|--------------------------|----------------------|-------------|
| | General Obligation Bonds | Certificates of Obligation | Tax Notes | Other Obligations | General Obligation Bonds | Certificates of Obligation | Tax Notes | Other Obligations | | | | |
| 2008 | 841,909 | 6,644,793 | | 332,369 | 2,193,091 | 10,100,212 | | | 250,000 | \$ 20,362,374 | 7.72% | \$ 4,007 |
| 2009 | 819,717 | 6,427,684 | | 199,454 | 2,135,288 | 9,617,317 | | | 185,000 | \$ 19,384,460 | 7.98% | \$ 3,776 |
| 2010 | 796,138 | 6,199,465 | | 262,421 | 2,073,867 | 6,925,536 | | | | \$ 16,257,427 | 6.17% | \$ 3,016 |
| 2011 | 746,206 | 7,391,807 | | 156,069 | 1,943,799 | 6,403,194 | | | | \$ 16,641,075 | 5.21% | \$ 2,761 |
| 2012 | 783,243 | 11,013,120 | | 44,859 | 5,771,762 | 2,536,881 | | | | \$ 20,149,865 | 5.88% | \$ 3,245 |
| 2013 | 5,027,505 | 11,866,865 | | 27,080 | 5,452,494 | 2,313,136 | | | | \$ 24,687,080 | 6.95% | \$ 3,823 |
| 2014 | 4,952,607 | 14,531,170 | | 12,228 | 5,127,393 | 4,393,829 | | | | \$ 29,017,227 | 7.55% | \$ 4,321 |
| 2015 | 4,606,322 | 14,211,317 | | | 4,558,678 | 5,798,682 | | 45,957 | | \$ 29,220,956 | 7.03% | \$ 4,184 |
| 2016 | 4,249,490 | 18,237,025 | | | 3,965,510 | 26,047,975 | | 18,704 | | \$ 52,518,704 | N/A | \$ 6,836 |
| 2017 | 3,880,431 | 22,013,573 | | | 3,359,570 | 30,731,425 | | | | \$ 59,984,999 | N/A | \$ 5,818 |

*See Table 16 for personal income and population data

Note: Details regarding the City's outstanding debt is found in the notes to the financial statements. The amounts presented are net of bond premiums.

Source: City of Celina Audit Reports

N/A - Information not available for the most current year

CITY OF CELINA, TEXAS
RATIOS OF GENERAL BONDED DEBT OUTSTANDING
LAST TEN FISCAL YEARS
(UNAUDITED)

Table 12

| Fiscal Year | Assessed Property Value (1) | Gross Bonded Debt (2) | % Bonded Debt to Assessed Property Value | Bonded Debt Per Capita |
|------------------------|--|----------------------------------|---|---------------------------------------|
| 2008 | 418,824,688 | 20,030,005 | 4.78% | 3,453 |
| 2009 | 463,326,983 | 19,185,006 | 4.14% | 3,198 |
| 2010 | 464,198,797 | 15,995,006 | 3.45% | 2,653 |
| 2011 | 454,064,487 | 16,485,006 | 3.63% | 2,711 |
| 2012 | 461,631,888 | 20,105,006 | 4.36% | 3,212 |
| 2013 | 482,230,390 | 24,660,000 | 5.11% | 3,817 |
| 2014 | 508,695,836 | 29,004,999 | 5.70% | 4,355 |
| 2015 | 554,892,312 | 29,220,956 | 5.27% | 3,992 |
| 2016 | 660,868,270 | 52,500,000 | 7.94% | 6,069 |
| 2017 | 872,961,920 | 59,984,999 | 6.87% | 5,818 |

Source: (1) Collin County Appraisal District
(2) Schedule of Bonds Payable and Total bonds for fiscal year

Details regarding the City's outstanding debt can be found in the notes to the financial statements.
The amounts presented are net of bond premiums.
See Table 16 for population data.

**CITY OF CELINA, TEXAS
LEGAL DEBT MARGIN INFORMATION
LAST TEN FISCAL YEARS
(UNAUDITED)**

Table 13

| | FISCAL YEAR | | | | | | | | | |
|--------------------|--------------------|---------|---------|---------|---------|---------|---------|---------|---------|---------|
| | 2008 | 2009 | 2010 | 2011 | 2012 | 2013 | 2014 | 2015 | 2016 | 2017 |
| Tax Rate Limit | \$ 2.50 | \$ 2.50 | \$ 2.50 | \$ 2.50 | \$ 2.50 | \$ 2.50 | \$ 2.50 | \$ 2.50 | \$ 2.50 | \$ 2.50 |
| Current Tax Rate | 0.6550 | 0.6450 | 0.6450 | 0.6450 | 0.6450 | 0.6450 | 0.6450 | 0.6450 | 0.6450 | 0.6450 |
| Available Tax Rate | \$ 1.85 | \$ 1.86 | \$ 1.86 | \$ 1.86 | \$ 1.86 | \$ 1.86 | \$ 1.86 | \$ 1.86 | \$ 1.86 | \$ 1.86 |

Note: The City Charter of the City of Celina, Texas does not provide for a debt limit. Under provisions of state law, the maximum tax rate is limited to \$2.50 per \$100 assessed valuation. No direct bond debt limitation is imposed on the City under current state law.

**CITY OF CELINA, TEXAS
DIRECT AND OVERLAPPING GOVERNMENTAL ACTIVITIES DEBT
AS OF SEPTEMBER 30, 2017 (UNAUDITED)**

TABLE 14

| <u>Governmental Unit</u> | <u>Gross Bonded Debt</u> | <u>% of Debt Applicable to Area</u> | <u>Celina Share of Overlapping Debt</u> |
|--|---------------------------------|--|--|
| Debt repaid with property taxes | | | |
| Collin County | 352,380,000 | 0.88% | 3,094,933 |
| Collin County Community College | 15,938,861 | 0.86% | 136,327 |
| Celina ISD | 93,625,288 | 98.30% | 92,033,369 |
| Subtotal, overlapping debt | \$ 461,944,149 | | \$ 95,264,629 |
| City of Celina (direct debt) | 25,894,004 | 100% | 25,894,004 |
| Total Direct and Overlapping Debt | | | <u>\$ 121,158,633</u> |

Note: Details regarding the City's outstanding debt is found in the notes to the financial statements. The amounts presented are net of bond premiums.

- ^a The percentage of overlapping debt applicable is estimated using taxable assessed property values (before freeze loss). Applicable percentages were estimated by determining the portion of another governmental unit's taxable assessed value that is within the city's boundaries and dividing it by each unit's total taxable assessed value.

CITY OF CELINA, TEXAS
 PLEDGED REVENUE COVERAGE
 AS OF SEPTEMBER 30, 2017 (UNAUDITED)
 LAST TEN FISCAL YEARS

Table 15

Water and Sewer System Revenue Bonds

| Fiscal Year | Total Revenues ^a | Less: Operating | Net Available | Annual | Times |
|-------------|-----------------------------|-----------------------|---------------|--------------------------|----------|
| | | Expenses ^b | Revenue | Requirement ^c | Coverage |
| 2008 | 3,140,470 | 2,042,101 | 1,098,369 | 766,811 | 1.43 |
| 2009 | 3,237,226 | 2,118,534 | 1,118,692 | 1,107,262 | 1.01 |
| 2010 | 3,368,661 | 2,325,473 | 1,043,188 | 652,408 | 1.60 |
| 2011 | 4,199,387 | 2,366,785 | 1,832,602 | 659,938 | 2.78 |
| 2012 | 4,406,232 | 2,633,213 | 1,773,019 | 543,005 | 3.27 |
| 2013 | 4,819,636 | 2,720,198 | 2,099,438 | 559,408 | 3.75 |
| 2014 | 6,164,464 | 2,690,720 | 3,473,744 | 808,862 | 4.29 |
| 2015 | 7,557,801 | 3,326,739 | 4,231,062 | 1,158,447 | 3.65 |
| 2016 | 10,171,180 | 7,059,651 | 3,111,529 | 1,697,450 | 1.83 |
| 2017 | 13,742,320 | 8,982,382 | 4,759,938 | 1,892,430 | 2.52 |

^a Includes operating revenues and investment income

^b Includes operating expenses minus depreciation

^c Includes Principal and Interest (represents average annual requirement)

**CITY OF CELINA, TEXAS
DEMOGRAPHIC AND ECONOMIC STATISTICS
LAST TEN FISCAL YEARS
(UNAUDITED)**

Table 16

| Year | Estimated Population^a | Personal Income^b | Per Capita Income^e | Average Age^f | School Enrollment^c | Unemployment Rate^d |
|-------------|---|------------------------------------|--|------------------------------------|--|--|
| 2008 | 5,082 | \$ 263,837,112 | \$ 51,916 | 33 | N/A | 4.7% |
| 2009 | 5,133 | \$ 243,042,417 | \$ 47,349 | 33 | N/A | 7.9% |
| 2010 | 5,390 | \$ 263,355,400 | \$ 48,860 | 33 | 1,904 | 7.0% |
| 2011 | 6,028 | \$ 319,303,160 | \$ 52,970 | 33 | 1,953 | 6.9% |
| 2012 | 6,209 | \$ 342,798,890 | \$ 55,210 | 33 | 2,013 | 5.6% |
| 2013 | 6,457 | \$ 355,283,511 | \$ 55,023 | 33 | 2,035 | 5.4% |
| 2014 | 6,715 | \$ 384,339,740 | \$ 57,236 | 34 | 2,075 | 4.4% |
| 2015 | 6,984 | \$ 415,771,488 | \$ 59,532 | 34 | 2,201 | 3.6% |
| 2016 | 7,683 | N/A | N/A | 36 | 2,353 | 3.8% |
| 2017 | 10,310 | \$ 376,036,630 | \$ 36,473 | 33 | 2,425 | 3.2% |

^a Source: Prior Years City of Celina Budgets and North Central Texas Council of Governments

^b Personal Income calculated by multiplying estimated population by per capita income.

^c Source: Celina Independent School District

^d Source: Texas Workforce Commission for month ending September of each year for Collin County

^e Source: Texas Workforce Commission data for Collin County/North Central Council of Governments for 2017

^f Source: North Central Council of Governments and U.S. Census Bureau (2006-2010 report); (2008-2012 report);

N/A Information not available for the most current year

City of Celina, Texas

Table 17

Top Employers

Fiscal Year Ended September 30, 2017 (unaudited)

Major Employers in Celina, Texas

| Employer | | # of Employees |
|---------------------------------|-----------------|-----------------------|
| Celina ISD | School District | 360 |
| City of Celina | Municipality | 124 |
| Brookshires | Grocery Store | 70 |
| ChemTrade | Chemical Plant | 28 |
| Martin Marietta Sand and Gravel | | * |

Sources: Respective entities

*Information not available

CITY OF CELINA, TEXAS
 FULL TIME EQUIVALENT CITY GOVERNMENT EMPLOYEES BY FUNCTION/PROGRAM
 AS OF SEPTEMBER 30, 2017 (UNAUDITED)
 LAST NINE FISCAL YEARS*

Table 18

| Function/Program | Dept. | FY 2009 | FY 2010 | FY 2011 | FY 2012 | FY 2013 | FY 2014 | FY 2015 | FY 2016 | FY 2017 |
|--|-------|-------------|--------------|--------------|-----------|-----------|-----------|-----------|-------------|--------------|
| Library | 508 | 0 | 1 | 1 | 1 | 2 | 2 | 2 | 2.5 | 2.5 |
| General Services | 509 | 1 | 1 | 1 | 1 | 1 | 1 | 1 | 2 | 3 |
| Development Services | 510 | 2 | 2.75 | 2.75 | 4.5 | 5 | 6 | 6 | 9 | 11.5 |
| Administration | 511 | 3 | 3 | 3 | 2 | 4 | 4 | 5 | 6 | 6 |
| Municipal Court | 512 | 1 | 1 | 1 | 1 | 1 | 1 | 1 | 1 | 2 |
| Fire & EMS | 513 | 11.5 | 11.5 | 11.5 | 11 | 11 | 11 | 11 | 16 | 19 |
| Streets | 514 | 3 | 3.5 | 4 | 3.5 | 4 | 4 | 6 | 7 | 7 |
| Police | 515 | 7 | 9 | 9 | 6 | 8 | 8 | 12 | 16 | 18 |
| Parks | 516 | 3 | 3 | 3 | 3 | 4 | 4 | 5 | 5 | 7 |
| Main Street | 517 | 1 | 0.5 | 0 | 0 | 1 | 0 | 0 | 0 | 0 |
| Marketing | 519 | 0 | 0 | 0 | 0 | 0 | 0 | 1 | 2 | 1 |
| Engineering | 520 | 0 | 0 | 0 | 0 | 0 | 0 | 0 | 4 | 6 |
| Total General Fund | | 32.5 | 36.25 | 36.25 | 33 | 41 | 41 | 50 | 70.5 | 83 |
| Water | 521 | 4 | 4 | 4 | 4 | 4 | 4 | 8 | 10 | 10.5 |
| Wastewater | 522 | 2 | 2 | 3 | 2 | 2 | 2 | 3 | 4 | 5.5 |
| Utility Billing | 524 | 0 | 0 | 0 | 0 | 0 | 0 | 0 | 0 | 3.5 |
| Total Water and Wastewater Fund | | 6 | 6 | 7 | 6 | 6 | 6 | 11 | 14 | 19.5 |
| Total FTE - All Funds | | 38.5 | 42.25 | 43.25 | 39 | 47 | 47 | 61 | 84.5 | 102.5 |

*The Main Street Director is budgeted under the Marketing Department. Two positions were budgeted in the Marketing Department.

*During FY 2016, the Marketing Director position was eliminated.

*Two new departments were created for FY 2017: Engineering and Utility Billing.

*Due to rapid growth, the City added additional positions to the Police and Fire/EMS departments.

*In FY 2016, the Human Resources Manager position was moved from Administration to the General Services department.

*Due to increased court activity, a new position was added during FY 2017 to Municipal Court.

Note: Data for FY 2007 and FY 2008 was not available

CITY OF CELINA, TEXAS
 OPERATING INDICATORS BY FUNCTION
 LAST TEN FISCAL YEARS
 (UNAUDITED)

Table 19

| FUNCTION/PROGRAM | FISCAL YEAR | | | | | | | | | |
|--|-------------|-------|--------|--------|--------|--------|------------|------------|------------|------------|
| | 2008 | 2009 | 2010 | 2011 | 2012 | 2013 | 2014 | 2015 | 2016 | 2017 |
| Police | | | | | | | | | | |
| Number of Police Officers | NA | 7 | 9 | 9 | 6 | 8 | 8 | 12 | 16 | 20 |
| Average Response Time (in minutes) | NA | NA | 8 | 7 | 6 | 7 | 6 | 6 | 6 | 6 |
| Calls for Service | NA | NA | 11,339 | 11,013 | 13,729 | 12,839 | 10,882 | 18,322 | 18,414 | 13,422 |
| Fire | | | | | | | | | | |
| Number of calls answered | 1164 | 1091 | 1085 | 1037 | 1114 | 870 | 892 | 932 | 946 | 1174 |
| Number of firefighters | | 9 | 9 | 9 | | | 9 | 9 | 14 | 15 |
| Number of EMS Runs | 48 | 353 | 570 | 555 | 613 | 477 | 480 | 457 | 521 | 641 |
| Development Services | | | | | | | | | | |
| Number of Inspections | NA | NA | NA | NA | NA | NA | NA | 5,000 | 9,350 | 34628 |
| Total Number of Permits Issued (all types) | NA | NA | NA | NA | NA | NA | NA | 1,126 | 1,688 | 3021 |
| Municipal Court | | | | | | | | | | |
| Number of new cases filed | NA | NA | NA | NA | NA | NA | 1,271 | 1,803 | 2,520 | 2,000 |
| Fines & Fees Collected | NA | NA | NA | NA | NA | NA | \$ 259,496 | \$ 311,869 | \$ 471,843 | \$ 400,000 |
| Streets | | | | | | | | | | |
| Miles of Streets | NA | NA | NA | NA | NA | NA | 124 | 138 | 154 | 213 |
| Miles of Storm Sewer | NA | NA | NA | NA | NA | NA | 31 | 35 | 39 | 48 |
| Acres of Drainage Right of Way | NA | NA | NA | NA | NA | NA | 7 | 8 | 9 | 9 |
| Regulatory and Warning Signs | NA | NA | NA | NA | NA | NA | 594 | 660 | 733 | 753 |
| Water | | | | | | | | | | |
| Gallons of Water Treated (in million gal.) | NA | NA | NA | NA | NA | NA | 365 | 446 | 508 | 671.3 |
| Miles of Water Lines | NA | NA | NA | NA | NA | NA | 90 | 100 | 112 | 134 |
| Number of Valves | NA | NA | NA | NA | NA | NA | 1,514 | 1,666 | 1,833 | 2504 |
| Number of Fire Hydrants | NA | NA | NA | NA | NA | NA | 517 | 569 | 626 | 998 |
| Number of Water Meters | NA | NA | NA | NA | NA | NA | 2,986 | 3,351 | 3,875 | 4598 |
| Wastewater | | | | | | | | | | |
| Gallons of WW Treated (in million gal.) | NA | NA | NA | NA | NA | NA | 132 | 147 | 85 | 179.7 |
| Miles of Sewer Lines | NA | NA | NA | NA | NA | NA | 61 | 67 | 74 | 94 |
| Number of Lift Stations | NA | NA | NA | NA | NA | NA | 13 | 12 | 11 | 11 |
| Utilities | | | | | | | | | | |
| Number of Active Customers | 2,031 | 2,059 | 2,122 | 2,239 | 2,380 | 2,497 | 2,860 | 3,337 | 3,902 | 4,584 |
| Number of New Customers | 438 | 373 | 402 | 481 | 506 | 569 | 956 | 1,273 | 1,597 | 2,054 |

*NA - Information not available

Source: City Departments

CITY OF CELINA, TEXAS
 CAPITAL ASSET STATISTICS BY FUNCTION /PROGRAM
 LAST TEN FISCAL YEARS
 (UNAUDITED)

Table 20

| FUNCTION/PROGRAM | FISCAL YEAR | | | | | | | | | |
|-----------------------------|-------------|------|------|------|------|-------|-------|-------|-------|-------|
| | 2008 | 2009 | 2010 | 2011 | 2012 | 2013 | 2014 | 2015 | 2016 | 2017 |
| Police | | | | | | | | | | |
| Stations | 1 | 1 | 1 | 1 | 1 | 1 | 1 | 1 | 1 | 1 |
| Fire | | | | | | | | | | |
| Stations | 1 | 1 | 1 | 1 | 1 | 1 | 1 | 1 | 1 | 1 |
| Library | | | | | | | | | | |
| | 0 | 1 | 1 | 1 | 1 | 1 | 1 | 1 | 1 | 1 |
| Parks and Recreation | | | | | | | | | | |
| Park Acreage | 45.7 | 45.7 | 45.7 | 45.7 | 45.7 | 115.7 | 115.7 | 145.7 | 164.7 | 164.7 |
| Public Parks | 3 | 3 | 3 | 3 | 3 | 3 | 3 | 3 | 3 | 3 |
| Streets | | | | | | | | | | |
| Miles of Streets | NA | NA | NA | NA | NA | NA | 124 | 138 | 154 | 213 |
| Water and Wastewater | | | | | | | | | | |
| Miles of Water Lines | NA | NA | NA | NA | NA | NA | 90 | 100 | 112 | 134 |
| Miles of Sewer Lines | NA | NA | NA | NA | NA | NA | 61 | 67 | 74 | 94 |
| Number of Lift Stations | NA | NA | NA | NA | NA | NA | 13 | 12 | 11 | 11 |

*NA - Information not available

Source: City Departments

Attachment 7

Facilities Map

(ref. pg 8, Part D: Question 27)

OVERSIZED MAP(s) or DOCUMENT(s)

**TO VIEW
OVERSIZED MAP(s) or DOCUMENT(s)**

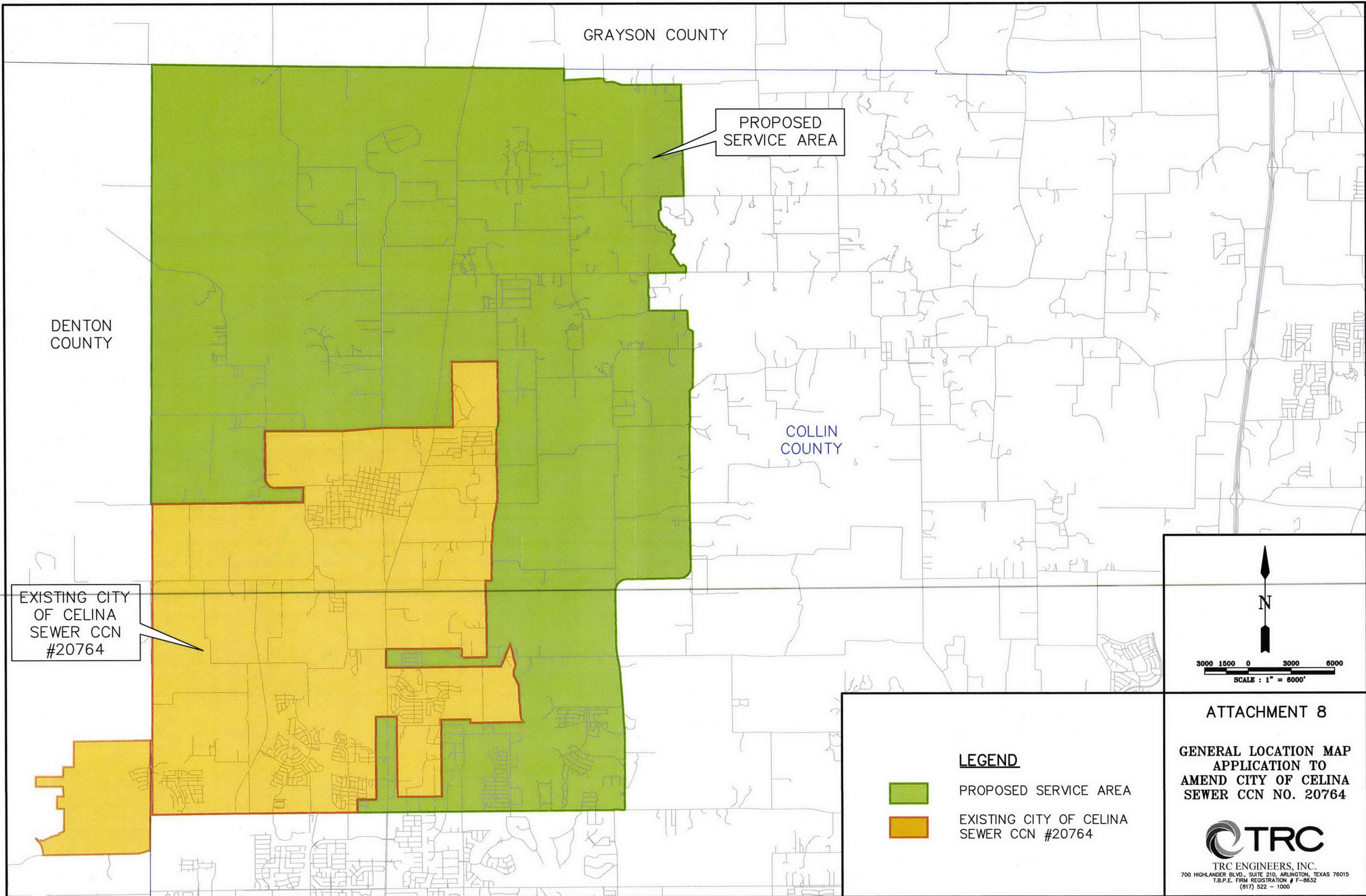
**PLEASE CONTACT
CENTRAL RECORDS
512.936.7180**

Thank you

Attachment 8

General Location Map

(ref. pg 10, Part F: Question 32.1)



GRAYSON COUNTY



PROPOSED
SERVICE AREA

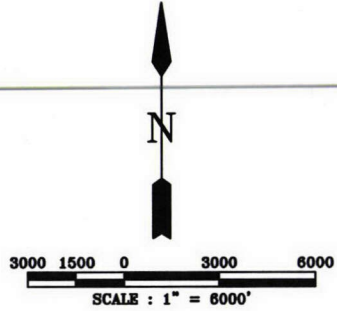
DENTON
COUNTY

COLLIN
COUNTY

EXISTING CITY
OF CELINA
SEWER CCN
#20764

LEGEND

-  PROPOSED SERVICE AREA
-  EXISTING CITY OF CELINA
SEWER CCN #20764



ATTACHMENT 8

**GENERAL LOCATION MAP
APPLICATION TO
AMEND CITY OF CELINA
SEWER CCN NO. 20764**



TRC ENGINEERS, INC.
700 HIGHLANDER BLVD., SUITE 210, ARLINGTON, TEXAS 76015
T.B.P.E. FIRM REGISTRATION # F-8632
(817) 522 - 1000



Attachment 9

Detailed Map

(ref. pg 10, Part F: Question 32.2)



Attachment 10

Digital Mapping Data

(ref. pg 11, Part F: Question 32.3)

CD ATTACHED

**TO VIEW PLEASE CONTACT
CENTRAL RECORDS
AT 512-936-7180**