



Control Number: 48350



Item Number: 148

Addendum StartPage: 0

RECEIVED

APPLICATION OF THE CITY OF  
DAYTON FOR CERTIFICATES OF  
CONVENIENCE AND NECESSITY IN  
LIBERTY AND HARRIS COUNTIES

§  
§  
§  
§  
§

BEFORE THE 5 PM 3:00  
PUBLIC UTILITY COMMISSION  
OF TEXAS

**CITY OF DAYTON'S THIRD SUPPLEMENT TO AMENDED APPLICATION**

COMES NOW, the City Dayton (the "*City*"), by and through its undersigned attorneys of record, and files this "Third Supplement to Amended Application" ("*Supplement*"). In support thereof, the City would show as follows:

**I. BACKGROUND**

On May 8, 2018, the City filed with the Public Utility Commission of Texas (the "*Commission*") its application to obtain water and sewer Certificates of Convenience and Necessity (each, a "*CCN*") in Liberty and Harris Counties pursuant to Chapter 13, Subchapter G of the Texas Water Code ("*TWC*") and Chapter 24, Subchapter H of Title 16 of the Texas Administrative Code ("*TAC*"). The City filed an Application Amendment on May 10, 2019; a First Supplement to Amended Application on July 27, 2020; and a Second Supplement to Amended Application on November 30, 2020 (the application, as amended and supplemented, is the "*Application*"). The water and sewer CCN service area originally requested included approximately 80,045 acres, but has since been reduced to approximately 14,885.5 acres (based on the State Plane Zone – Texas Central – (feet) shapefile provided with this Supplement (FinalReqDayton\_SPC.zip)).

Notice of the Application was mailed to neighboring systems, landowners, customers, and cities on June 18, 2018; and deemed sufficient by the Administrative Law Judge ("*ALJ*") on August 13, 2018. In response to that notice, the Commission received

148

more than 45 public comments, motions to intervene, and/or requests to exclude property from the CCN service areas sought by the City (each request to exclude property is referred to herein as an “*Opt-Out Request*”). A total of 38 separate Opt-Out Requests were filed in this docket, many concerning properties now located outside of the reduced requested area, and twenty of which fail to meet the requirements of TWC § 13.246(h) and 16 TAC § 24.227(i) (each, a “*Noncompliant Opt-Out Request*”).

Nevertheless, in order to demonstrate the proper accommodation of all 38 Opt-Out Requests, the City submitted revised maps and digital data on December 20, 2018, which were deemed sufficient on February 5, 2019. Following the issuance of Order No. 9, deeming the supplemental mapping sufficient, however, Staff propounded a First and Second Request for Information (each, an “*RFI*”) on the City, both requesting that it provide additional mapping information, and the City has been working diligently and cooperatively to accommodate further Staff requests for supplemental mapping materials since that time.

By March 2020, however, the City had used its best efforts and exhausted all resources available to it in attempting to produce satisfactory mapping materials. Seeing no other means to resolve Staff’s mapping concerns with finality, the City made an unprecedented offer to mail additional, supplemental notice of the Application to landowners who submitted Noncompliant Opt-Out Requests, thereby affording such landowners an extra opportunity—neither contemplated nor required by the applicable law or regulations—to submit Opt-Out Requests conforming to the regulatory requirements. Staff promptly accepted the City’s proposal and, on March 24, 2020, at a considerable cost in both time and money, the City mailed supplemental notice of the Application to each landowner who had submitted a Noncompliant Opt-Out Request.

Over the months that followed, the City received responses from 15 of the 20 Noncompliant Opt-Out Requestors, each giving written and/or verbal confirmation or clarification as to the individual tracts of land that they had intended to designate in their respective Opt-Out Requests. The other five landowners did not provide a response. Although the City could have disregarded these remaining Noncompliant Opt-Out Requests, leaving the relevant properties within the requested CCN service area, it has gone to extreme lengths to accommodate all of the Opt-Out Requests filed in this docket. The City most recently submitted additional mapping information on November 30, 2020, but Staff recommended that those supplemental materials be deemed deficient. On February 8, 2021, the ALJ issued Order No. 18, adopting that recommendation and establishing a deadline for the City to provide the additional materials and information requested in an internal Commission memorandum filed by Staff (“*Memo*”). As extended by Order No. 19, that deadline is April 5, 2021. Therefore, this Supplement is timely filed.

## II. SUPPLEMENT TO AMENDED APPLICATION

The City hereby supplements its Application with the following additional information, documentation, and mapping content responsive to the requests in the Memo as well as those subsequently communicated by Staff (each, a “*Request*”):

- Request No. 1:** Updated digital mapping data for the requested area provided in a polygon shapefile (SHP) format, georeferenced in NAD 83 Texas Statewide Mapping System (Meters), and depicting the removal of the following items from the requested area:
- a) The settlement tracts agreed upon with Aqua Texas, Inc;
  - b) All individual parcels comprising every tract of land identified in each Opt-Out Request, including the Noncompliant Opt-Out Requests, whether or not such parcels are located within the reduced requested area;
  - c) The gap between the requested area and the boundary of

- Woodland Hills Water, LLC's service area; and
- d) Any area that does not align with the City's corporate boundaries, as depicted by the mapping information filed on November 30, 2020.

**Response:** See the CD-ROM included as **Attachment A**, attached hereto and incorporated herein for all purposes.

**Request No. 2:** Digital mapping data depicting the removal of an amount of acreage for each Opt-Out Request that is the same as that listed for the Opt-Out Request on the Opt-Out Request spreadsheet prepared in coordination with Staff.

**Response:** See the CD-ROM included as **Attachment A**, attached hereto and incorporated herein for all purposes.

**Request No. 3:** Updated Opt-Out Request spreadsheet.

**Response:** See the updated Opt-Out Request spreadsheet included as **Attachment B**, attached hereto and incorporated herein for all purposes.

**Request No. 4:** Hardcopy map identifying the reduced requested area after removing all individual parcels comprising every tract of land subject to each Opt-Out Request, including Noncompliant Opt-Out Requests, whether or not such parcels are located within the reduced requested area.

**Response:** See the "Requested Area" map included in **Attachment C**, attached hereto and incorporated herein for all purposes, which depicts the entire CCN service area requested by the City, including the southernmost portion thereof, which was mistakenly left off of the maps submitted with the City's Second Supplement to Amended Application.

**Request No. 5:** Hardcopy map identifying every individual parcel of land contained within every property subject to each Opt-Out Request, including Noncompliant Opt-Out Requests, whether or not such parcels are located within the reduced requested area.

**Response:** See the "Landowner Opt-Outs" map included in **Attachment D**, attached hereto and incorporated herein for all purposes, which depicts all parcels comprising every tract of land subject to each Opt-Out Request, including those located in the southernmost portion of the

requested area, which were mistakenly left off of the maps submitted with the City's Second Supplement to Amended Application.

**Request No. 6:** Correspondence from River Ranch Holdings, LLC (Interchange Item Nos. 13, 22, 24); Daniel and Lisa Simnacher (Interchange Item Nos. 32, 33); and Keith and Connie Fitzhenry (Interchange Item Nos. 47) indicating their approval of the mapping data used by the City.

**Response:** Commission Staff requested that all mapping related to the Opt-Out Requests be prepared using data from only one source, and the City has relied upon that of the Liberty County Central Appraisal District ("**LCAD**"). While the maps prepared using the LCAD data for the properties subject to the above-referenced Opt-Out Requests depict the same area as maps prepared using the metes and bounds provided with the Opt-Out Requests, the LCAD data for said properties contains clerical errors, reporting acreage amounts that are different from those determinable from the Opt-Out Request documentation.

Given those reporting errors, Staff requested that the City provide the above-listed landowners with an opportunity to review the "Landowner Opt-Outs" map included in **Attachment D** to confirm that it correctly depicts the removal of the properties subject to their respective Opt-Out Request. The City's additional notice to those landowners and their responses thereto are included as **Attachment E**, attached hereto and incorporated herein for all purposes.

### **III. CONCLUSION**

The City of Dayton respectfully requests that the Commission approve its Application, as supplemented hereby, and grant all other and further relief to which it may be entitled.

Respectfully submitted,

**LLOYD GOSSELINK ROCHELLE &  
TOWNSEND, P.C.**

816 Congress Avenue, Suite 1900  
Austin, Texas 78701  
(512) 322-5800  
(512) 472-0532 (Fax)

DAVID J. KLEIN  
State Bar No. 24041257  
[dklein@lglawfirm.com](mailto:dklein@lglawfirm.com)



---

MARIS M. CHAMBERS  
State Bar No. 24101607  
[mchambers@lglawfirm.com](mailto:mchambers@lglawfirm.com)

**ATTORNEYS FOR THE CITY OF DAYTON**

**CERTIFICATE OF SERVICE**

I certify that, unless otherwise ordered by the presiding officer, notice of the filing of this document was provided to all parties of record via electronic mail on April 5, 2021, in accordance with the Order Suspending Rules, issued in Project No. 50664.

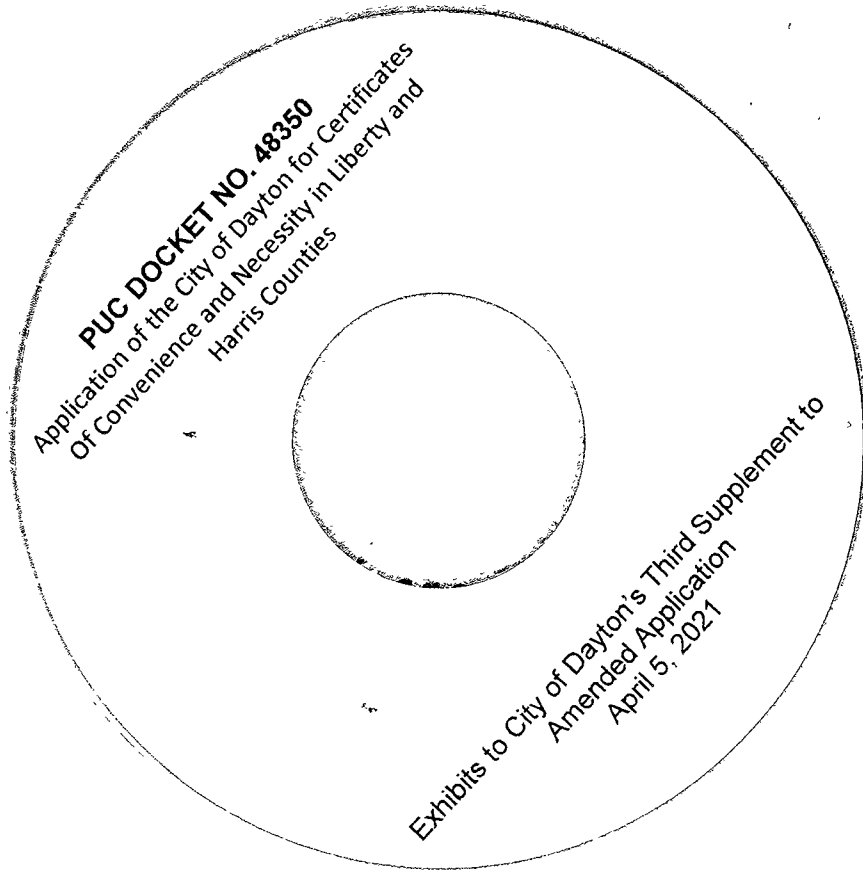


---

Maris M. Chambers

**Attachment A**  
**Updated Digital Mapping Data**





**Attachment B**  
**Opt-Out Request Spreadsheet**

ABBREVIATIONS												
LCAD	Liberty County Appraisal District	M&Bs	Metes & Bounds (bearings & distances on a deed)			OR	ORIGINAL REQUEST					
CCAD	Chambers County Appraisal District	PUC	Public Utility Commission			NCR	NON-CONFORMING REQUEST - filings to the PUC from landowners that sent additional opt-out information in response to the City of Dayton's request					
HCAD	Harris County Appraisal District	ac	acre(s)									
NOTE: The PUC Item #s in Column A that are marked with an asterisk (*) are the PUC Item numbers that are used to label on the maps the landowner opt-outs that have multiple ORIGINAL filings.												
NOTE: The yellow highlighted information was either edited or added for the April 6, 2021 submittal.												
PUC Item #	Landowner in Opt-out	Owner's Name Per LCAD, HCAD, or CCAD	Property ID # in LCAD, HCAD, or CCAD	Total Acreage in Request	OR=Original Request NCR=Non-conforming Request	Acreage & Source Provided in Opt-out Request	LCAD,HCAD, or CCAD Acreage per tract	Add'l PUC Item Nos. Assoc.	GIS Source of Acreage	Difference in Acreage Between LCAD, HCAD, or CCAD and Opt-Out Request	Reason for Difference in Acreage	Comments & Notes
10	Gerald Dufrene	Gerald and Laura Dufrene	184683	42.0000	OR	M&B, LCAD map with parcel ID# - 41.3519 ac	41.3519	n/a	LCAD	0.6481	M&Bs=41.3519 ac=LCAD.	
11	Stoesser Farms	Liberty Grand Partners LLC	26622	2627.7000	NCR	Tract 1 M&Bs and plat - 2414.5 ac	390.2600	122	LCAD	65.7190	All tracts from plat accounted for. Information differs between LCAD and that provided. Total ac in Request was 1 ac more than actual total.	
11	Stoesser Farms	Liberty Grand Partners LLC	26622	2627.7000	NCR	Tract 1 M&Bs and plat - 2414.5 ac	390.2600	122	LCAD	65.7190	All tracts from plat accounted for. Information differs between LCAD and that provided. Total ac in Request was 1 ac more than actual total.	
11	Stoesser Farms	Liberty Grand Partners LLC	26622	2627.7000	NCR	Tract 1 M&Bs and plat - 2414.5 ac	390.2600	122	LCAD	65.7190	All tracts from plat accounted for. Information differs between LCAD and that provided. Total ac in Request was 1 ac more than actual total.	
11	Stoesser Farms	Liberty Grand Partners LLC	26622	2627.7000	NCR	Tract 1 M&Bs and plat - 2414.5 ac	390.2600	122	LCAD	65.7190	All tracts from plat accounted for. Information differs between LCAD and that provided. Total ac in Request was 1 ac more than actual total.	
11	Stoesser Farms	Liberty Grand Partners LLC	26622	2627.7000	NCR	Tract 1 M&Bs and plat - 2414.5 ac	390.2600	122	LCAD	65.7190	All tracts from plat accounted for. Information differs between LCAD and that provided. Total ac in Request was 1 ac more than actual total.	
11	Stoesser Farms	Liberty Grand Partners LLC	26622	2627.7000	NCR	Tract 1 M&Bs and plat - 2414.5 ac	390.2600	122	LCAD	65.7190	All tracts from plat accounted for. Information differs between LCAD and that provided. Total ac in Request was 1 ac more than actual total.	
11	Stoesser Farms	Liberty Grand Partners LLC	26622	2627.7000	NCR	Tract 1 M&Bs and plat - 2414.5 ac	390.2600	122	LCAD	65.7190	All tracts from plat accounted for. Information differs between LCAD and that provided. Total ac in Request was 1 ac more than actual total.	
11	Stoesser Farms	Liberty Grand Partners LLC	26622	2627.7000	NCR	Tract 1 M&Bs and plat - 2414.5 ac	390.2600	122	LCAD	65.7190	All tracts from plat accounted for. Information differs between LCAD and that provided. Total ac in Request was 1 ac more than actual total.	
11	Stoesser Farms	Liberty Grand Partners LLC	26622	2627.7000	NCR	Tract 1 M&Bs and plat - 2414.5 ac	390.2600	122	LCAD	65.7190	All tracts from plat accounted for. Information differs between LCAD and that provided. Total ac in Request was 1 ac more than actual total.	
11	Stoesser Farms	Liberty Grand Partners LLC	26622	2627.7000	NCR	Tract 1 M&Bs and plat - 2414.5 ac	390.2600	122	LCAD	65.7190	All tracts from plat accounted for. Information differs between LCAD and that provided. Total ac in Request was 1 ac more than actual total.	
11	Stoesser Farms	Liberty Grand Partners LLC	26622	2627.7000	NCR	Tract 1 M&Bs and plat - 2414.5 ac	390.2600	122	LCAD	65.7190	All tracts from plat accounted for. Information differs between LCAD and that provided. Total ac in Request was 1 ac more than actual total.	
11	Stoesser Farms	Liberty Grand Partners LLC	26622	2627.7000	NCR	Tract 1 M&Bs and plat - 2414.5 ac	390.2600	122	LCAD	65.7190	All tracts from plat accounted for. Information differs between LCAD and that provided. Total ac in Request was 1 ac more than actual total.	
11	Stoesser Farms	Liberty Grand Partners LLC	26622	2627.7000	NCR	Tract 1 M&Bs and plat - 2414.5 ac	390.2600	122	LCAD	65.7190	All tracts from plat accounted for. Information differs between LCAD and that provided. Total ac in Request was 1 ac more than actual total.	
11	Stoesser Farms	Liberty Grand Partners LLC	26622	2627.7000	NCR	Tract 1 M&Bs and plat - 2414.5 ac	390.2600	122	LCAD	65.7190	All tracts from plat accounted for. Information differs between LCAD and that provided. Total ac in Request was 1 ac more than actual total.	
11	Stoesser Farms	Liberty Grand Partners LLC	26622	2627.7000	NCR	Tract 1 M&Bs and plat - 2414.5 ac	390.2600	122	LCAD	65.7190	All tracts from plat accounted for. Information differs between LCAD and that provided. Total ac in Request was 1 ac more than actual total.	
11	Stoesser Farms	Multiple Owners	245210	2627.7000	NCR	Tract 1 M&Bs and plat - 2414.5 ac	253.9900	122	LCAD	65.7190	All tracts from plat accounted for. Information differs between LCAD and that provided. Total ac in Request was 1 ac more than actual total.	
11	Stoesser Farms	Liberty Grand Partners LLC	27617	2627.7000	NCR	Tract 1 M&Bs and plat - 2414.5 ac	226.9900	122	LCAD	65.7190	All tracts from plat accounted for. Information differs between LCAD and that provided. Total ac in Request was 1 ac more than actual total.	
11	Stoesser Farms	Liberty Grand Partners LLC	27617	2627.7000	NCR	Tract 1 M&Bs and plat - 2414.5 ac	226.9900	122	LCAD	65.7190	All tracts from plat accounted for. Information differs between LCAD and that provided. Total ac in Request was 1 ac more than actual total.	

PUC Item #	Landowner in Opt-out	Owner's Name Per LCAD, HCAD, or CCAD	Property ID # in LCAD, HCAD, or CCAD	Total Acreage in Request	OR=Original Request NCR=Non-conforming Request	Acreage & Source Provided in Opt-out Request	LCAD,HCAD, or CCAD Acreage per tract	Add'l PUC Item Nos. Assoc.	GIS Source of Acreage	Difference in Acreage Between LCAD, HCAD, or CCAD and Opt-Out Request	Reason for Difference in Acreage	Comments & Notes
11	Stoesser Farms	Liberty Grand Partners LLC	27617	2627.7000	NCR	Tract 1 M&Bs and plat - 2414.5 ac	226.9900	122	LCAD	65.7190	All tracts from plat accounted for. Information differs between LCAD and that provided. Total ac in Request was 1 ac more than actual total.	
11	Stoesser Farms	Liberty Grand Partners LLC	27617	2627.7000	NCR	Tract 1 M&Bs and plat - 2414.5 ac	226.9900	122	LCAD	65.7190	All tracts from plat accounted for. Information differs between LCAD and that provided. Total ac in Request was 1 ac more than actual total.	
11	Stoesser Farms	Liberty Grand Partners LLC	27617	2627.7000	NCR	Tract 1 M&Bs and plat - 2414.5 ac	226.9900	122	LCAD	65.7190	All tracts from plat accounted for. Information differs between LCAD and that provided. Total ac in Request was 1 ac more than actual total.	
11	Stoesser Farms	Liberty Grand Partners LLC	27617	2627.7000	NCR	Tract 1 M&Bs and plat - 2414.5 ac	226.9900	122	LCAD	65.7190	All tracts from plat accounted for. Information differs between LCAD and that provided. Total ac in Request was 1 ac more than actual total.	
11	Stoesser Farms	Liberty Grand Partners LLC	27618	2627.7000	NCR	Tract 1 M&Bs and plat - 2414.5 ac	10.6700	122	LCAD	65.7190	All tracts from plat accounted for. Information differs between LCAD and that provided. Total ac in Request was 1 ac more than actual total.	
11	Stoesser Farms	Liberty Grand Partners LLC	29897	2627.7000	NCR	Tract 1 M&Bs and plat - 2414.5 ac	161.9500	122	LCAD	65.7190	All tracts from plat accounted for. Information differs between LCAD and that provided. Total ac in Request was 1 ac more than actual total.	
11	Stoesser Farms	Liberty Grand Partners LLC	29897	2627.7000	NCR	Tract 1 M&Bs and plat - 2414.5 ac	161.9500	122	LCAD	65.7190	All tracts from plat accounted for. Information differs between LCAD and that provided. Total ac in Request was 1 ac more than actual total.	
11	Stoesser Farms	Liberty Grand Partners LLC	31028	2627.7000	NCR	Tract 1 M&Bs and plat - 2414.5 ac	62.7500	122	LCAD	65.7190	All tracts from plat accounted for. Information differs between LCAD and that provided. Total ac in Request was 1 ac more than actual total.	This tract is odd. Looks like a tiny little sliver but says it's 275 ac. Would explain most of the difference in acres between M&Bs and plat and LCAD if it's the problem.
11	Stoesser Farms	Liberty Grand Partners LLC	31028	2627.7000	NCR	Tract 1 M&Bs and plat - 2414.5 ac	62.7500	122	LCAD	65.7190	All tracts from plat accounted for. Information differs between LCAD and that provided. Total ac in Request was 1 ac more than actual total.	This tract is odd. Looks like a tiny little sliver but says it's 275 ac. Would explain most of the difference in acres between M&Bs and plat and LCAD if it's the problem.
11	Stoesser Farms	Liberty Grand Partners LLC	31028	2627.7000	NCR	Tract 1 M&Bs and plat - 2414.5 ac	62.7500	122	LCAD	65.7190	All tracts from plat accounted for. Information differs between LCAD and that provided. Total ac in Request was 1 ac more than actual total.	This tract is odd. Looks like a tiny little sliver but says it's 275 ac. Would explain most of the difference in acres between M&Bs and plat and LCAD if it's the problem.
11	Stoesser Farms	Liberty Grand Partners LLC	31220	2627.7000	NCR	Tract 1 M&Bs and plat - 2414.5 ac	26.3490	122	LCAD	65.7190	All tracts from plat accounted for. Information differs between LCAD and that provided. Total ac in Request was 1 ac more than actual total.	
11	Stoesser Farms	Liberty Grand Partners LLC	31820	2627.7000	NCR	Tract 1 M&Bs and plat - 2414.5 ac	94.0000	122	LCAD	65.7190	All tracts from plat accounted for. Information differs between LCAD and that provided. Total ac in Request was 1 ac more than actual total.	
11	Stoesser Farms	Liberty Grand Partners LLC	32225	2627.7000	NCR	Tract 1 M&Bs and plat - 2414.5 ac	10.4000	122	LCAD	65.7190	All tracts from plat accounted for. Information differs between LCAD and that provided. Total ac in Request was 1 ac more than actual total.	
11	Stoesser Farms	Liberty Grand Partners LLC	193177	2627.7000	NCR	Tract 1 M&Bs and plat - 2414.5 ac	61.8500	122	LCAD	65.7190	All tracts from plat accounted for. Information differs between LCAD and that provided. Total ac in Request was 1 ac more than actual total.	
11	Stoesser Farms	Liberty Grand Partners LLC	193178	2627.7000	NCR	Tract 1 M&Bs and plat - 2414.5 ac	37.0200	122	LCAD	65.7190	All tracts from plat accounted for. Information differs between LCAD and that provided. Total ac in Request was 1 ac more than actual total.	
11	Stoesser Farms	Liberty Grand Partners LLC	193178	2627.7000	NCR	Tract 1 M&Bs and plat - 2414.5 ac	37.0200	122	LCAD	65.7190	All tracts from plat accounted for. Information differs between LCAD and that provided. Total ac in Request was 1 ac more than actual total.	
11	Stoesser Farms	BT Cobb Development, LLC	193180	2627.7000	NCR	Tract 1 M&Bs and plat - 2414.5 ac	30.3500	122	LCAD	65.7190	All tracts from plat accounted for. Information differs between LCAD and that provided. Total ac in Request was 1 ac more than actual total.	

PUC Item #	Landowner in Opt-out	Owner's Name Per LCAD, HCAD, or CCAD	Property ID # in LCAD, HCAD, or CCAD	Total Acreage in Request	OR=Original Request NCR=Non-conforming Request	Acreage & Source Provided in Opt-out Request	LCAD, HCAD, or CCAD Acreage per tract	Add'l PUC Item Nos. Assoc.	GIS Source of Acreage	Difference in Acreage Between LCAD, HCAD, or CCAD and Opt-Out Request	Reason for Difference in Acreage	Comments & Notes
11	Stoesser Farms	Liberty Grand Partners LLC	15703	2627.7000	NCR	Tract 1 M&Bs and plat - 2414.5 ac	792.7200	122	LCAD	65.7190	All tracts from plat accounted for. Information differs between LCAD and that provided. Total ac in Request was 1 ac more than actual total.	
11	Stoesser Farms	Liberty Grand Partners LLC	15703	2627.7000	NCR	Tract 1 M&Bs and plat - 2414.5 ac	792.7200	122	LCAD	65.7190	All tracts from plat accounted for. Information differs between LCAD and that provided. Total ac in Request was 1 ac more than actual total.	
11	Stoesser Farms	Liberty Grand Partners LLC	15703	2627.7000	NCR	Tract 1 M&Bs and plat - 2414.5 ac	792.7200	122	LCAD	65.7190	All tracts from plat accounted for. Information differs between LCAD and that provided. Total ac in Request was 1 ac more than actual total.	
11	Stoesser Farms	Liberty Grand Partners LLC	15703	2627.7000	NCR	Tract 1 M&Bs and plat - 2414.5 ac	792.7200	122	LCAD	65.7190	All tracts from plat accounted for. Information differs between LCAD and that provided. Total ac in Request was 1 ac more than actual total.	
11	Stoesser Farms	Liberty Grand Partners LLC	15703	2627.7000	NCR	Tract 1 M&Bs and plat - 2414.5 ac	792.7200	122	LCAD	65.7190	All tracts from plat accounted for. Information differs between LCAD and that provided. Total ac in Request was 1 ac more than actual total.	
11	Stoesser Farms	Liberty Grand Partners LLC	15703	2627.7000	NCR	Tract 1 M&Bs and plat - 2414.5 ac	792.7200	122	LCAD	65.7190	All tracts from plat accounted for. Information differs between LCAD and that provided. Total ac in Request was 1 ac more than actual total.	
11	Stoesser Farms	Liberty Grand Partners LLC	15703	2627.7000	NCR	Tract 1 M&Bs and plat - 2414.5 ac	792.7200	122	LCAD	65.7190	All tracts from plat accounted for. Information differs between LCAD and that provided. Total ac in Request was 1 ac more than actual total.	
11	Stoesser Farms	Liberty Grand Partners LLC	15703	2627.7000	NCR	Tract 1 M&Bs and plat - 2414.5 ac	792.7200	122	LCAD	65.7190	All tracts from plat accounted for. Information differs between LCAD and that provided. Total ac in Request was 1 ac more than actual total.	
11	Stoesser Farms	Liberty Grand Partners LLC	15703	2627.7000	NCR	Tract 1 M&Bs and plat - 2414.5 ac	792.7200	122	LCAD	65.7190	All tracts from plat accounted for. Information differs between LCAD and that provided. Total ac in Request was 1 ac more than actual total.	
11	Stoesser Farms	Liberty Grand Partners LLC	15703	2627.7000	NCR	Tract 1 M&Bs and plat - 2414.5 ac	792.7200	122	LCAD	65.7190	All tracts from plat accounted for. Information differs between LCAD and that provided. Total ac in Request was 1 ac more than actual total.	
11	Stoesser Farms	Liberty Grand Partners LLC	15703	2627.7000	NCR	Tract 1 M&Bs and plat - 2414.5 ac	792.7200	122	LCAD	65.7190	All tracts from plat accounted for. Information differs between LCAD and that provided. Total ac in Request was 1 ac more than actual total.	
11	Stoesser Farms	Liberty Grand Partners LLC	15703	2627.7000	NCR	Tract 1 M&Bs and plat - 2414.5 ac	792.7200	122	LCAD	65.7190	All tracts from plat accounted for. Information differs between LCAD and that provided. Total ac in Request was 1 ac more than actual total.	
11	Stoesser Farms	Liberty Grand Partners LLC	15703	2627.7000	NCR	Tract 1 M&Bs and plat - 2414.5 ac	792.7200	122	LCAD	65.7190	All tracts from plat accounted for. Information differs between LCAD and that provided. Total ac in Request was 1 ac more than actual total.	
11	Stoesser Farms	Liberty Grand Partners LLC	15703	2627.7000	NCR	Tract 1 M&Bs and plat - 2414.5 ac	792.7200	122	LCAD	65.7190	All tracts from plat accounted for. Information differs between LCAD and that provided. Total ac in Request was 1 ac more than actual total.	
11	Stoesser Farms	Liberty Grand Partners LLC	15706	2627.7000	NCR	Tract 1 M&Bs and plat - 2414.5 ac	104.3300	122	LCAD	65.7190	All tracts from plat accounted for. Information differs between LCAD and that provided. Total ac in Request was 1 ac more than actual total.	

PUC Item #	Landowner in Opt-out	Owner's Name Per LCAD, HCAD, or CCAD	Property ID # in LCAD, HCAD, or CCAD	Total Acreage in Request	OR=Original Request NCR=Non-conforming Request	Acreage & Source Provided in Opt-out Request	LCAD, HCAD, or CCAD Acreage per tract	Add'l PUC Item Nos. Assoc.	GIS Source of Acreage	Difference in Acreage Between LCAD, HCAD, or CCAD and Opt-Out Request	Reason for Difference in Acreage	Comments & Notes
11	Stoesser Farms	Liberty Grand Partners LLC	15708	2627.7000	NCR	Tract 1 M&Bs and plat - 2414.5 ac	72.2000	122	LCAD	65.7190	All tracts from plat accounted for. Information differs between LCAD and that provided. Total ac in Request was 1 ac more than actual total.	
11	Stoesser Farms	Liberty Grand Partners LLC	22123	2627.7000	NCR	Tract 1 M&Bs and plat - 2414.5 ac	41.0500	122	LCAD	65.7190	All tracts from plat accounted for. Information differs between LCAD and that provided. Total ac in Request was 1 ac more than actual total.	
11	Stoesser Farms	Liberty Grand Partners LLC	22123	2627.7000	NCR	Tract 1 M&Bs and plat - 2414.5 ac	41.0500	122	LCAD	65.7190	All tracts from plat accounted for. Information differs between LCAD and that provided. Total ac in Request was 1 ac more than actual total.	
11	Stoesser Farms	Liberty Grand Partners LLC	22123	2627.7000	NCR	Tract 1 M&Bs and plat - 2414.5 ac	41.0500	122	LCAD	65.7190	All tracts from plat accounted for. Information differs between LCAD and that provided. Total ac in Request was 1 ac more than actual total.	
11	Stoesser Farms	Liberty Grand Partners LLC	25358	2627.7000	NCR	Tract 1 M&Bs and plat - 2414.5 ac	94.1200	122	LCAD	65.7190	All tracts from plat accounted for. Information differs between LCAD and that provided. Total ac in Request was 1 ac more than actual total.	
11	Stoesser Farms	Multiple Owners	246159	2627.7000	NCR	Tract 2 M&Bs and plat - 212.2 ac	84.0500	122	LCAD	65.7190	All tracts from plat accounted for. Information differs between LCAD and that provided. Total ac in Request was 1 ac more than actual total.	9.78 ac difference in Tract 2
11	Stoesser Farms	Multiple Owners	246167	2627.7000	NCR	Tract 2 M&Bs and plat - 212.2 ac	118.3700	122	LCAD	65.719 +	All tracts from plat accounted for. Information differs between LCAD and that provided. Total ac in Request was 1 ac more than actual total.	more ac listed here than in opt-out, but going tract by tract according to M&Bs and plat, these properties are in the submittal
12	Joe Smesny	Joe H. Smesny	14911	1873.144 ac	OR	Tract A M&Bs 737.727 ac	737.7300	n/a	LCAD	0.8700	difference in LCAD	
12	Joe Smesny	Joe H. Smesny	14911	1873.144 ac	OR	Tract A M&Bs 737.727 ac	737.7300	n/a	LCAD	0.8700	difference in LCAD	
12	Joe Smesny	Joe H. Smesny	14911	1873.144 ac	OR	Tract A M&Bs 737.727 ac	737.7300	n/a	LCAD	0.8700	difference in LCAD	
12	Joe Smesny	Joe H. Smesny	14911	1873.144 ac	OR	Tract A M&Bs 737.727 ac	737.7300	n/a	LCAD	0.8700	difference in LCAD	
12	Joe Smesny	Joe H. Smesny	14911	1873.144 ac	OR	Tract A M&Bs 737.727 ac	737.7300	n/a	LCAD	0.8700	difference in LCAD	
12	Joe Smesny	Joe H. Smesny	94076	1873.144 ac	OR	Tract B M&Bs 62.457 ac	62.4600	n/a	LCAD	0.8700	difference in LCAD	
12	Joe Smesny	Joe H. Smesny	25204	1873.144 ac	OR	Tract C M&Bs 1072.96 ac	192.0100	n/a	LCAD	0.8700	difference in LCAD	
12	Joe Smesny	Joe H. Smesny	69824	1873.144 ac	OR	Tract C M&Bs 1072.96 ac	253.8500	n/a	LCAD	0.8700	difference in LCAD	
12	Joe Smesny	Joe H. Smesny	69824	1873.144 ac	OR	Tract C M&Bs 1072.96 ac	253.8500	n/a	LCAD	0.8700	difference in LCAD	
12	Joe Smesny	Joe H. Smesny	69824	1873.144 ac	OR	Tract C M&Bs 1072.96 ac	253.8500	n/a	LCAD	0.8700	difference in LCAD	
12	Joe Smesny	Joe H. Smesny	69824	1873.144 ac	OR	Tract C M&Bs 1072.96 ac	253.8500	n/a	LCAD	0.8700	difference in LCAD	
12	Joe Smesny	Joe H. Smesny	69824	1873.144 ac	OR	Tract C M&Bs 1072.96 ac	253.8500	n/a	LCAD	0.8700	difference in LCAD	
12	Joe Smesny	Joe H. Smesny	69824	1873.144 ac	OR	Tract C M&Bs 1072.96 ac	253.8500	n/a	LCAD	0.8700	difference in LCAD	
12	Joe Smesny	Joe H. Smesny	30185	1873.144 ac	OR	Tract C M&Bs 1072.96 ac	602.7300	n/a	LCAD	0.8700	difference in LCAD	
12	Joe Smesny	Joe H. Smesny	30172	1873.144 ac	OR	Tract C M&Bs 1072.96 ac	23.7000	n/a	LCAD	0.8700	difference in LCAD	
13*	River Ranch Holdings, LLC	River Ranch Holdings LLC	10031	6957.0900	OR	M&Bs and plat - 6957.09 ac	46.5730	22,24	LCAD	41.3039	difference in LCAD	
13*	River Ranch Holdings, LLC	River Ranch Holdings LLC	10955	6957.0900	OR	M&Bs and plat - 6957.09 ac	3519.8900	22,24	LCAD	41.3039	difference in LCAD	
13*	River Ranch Holdings, LLC	River Ranch Holdings LLC	19048	6957.0900	OR	M&Bs and plat - 6957.09 ac	861.4356	22,24	LCAD	41.3039	difference in LCAD	
13*	River Ranch Holdings, LLC	River Ranch Holdings LLC	19048	6957.0900	OR	M&Bs and plat - 6957.09 ac	861.4356	22,24	LCAD	41.3039	difference in LCAD	
13*	River Ranch Holdings, LLC	River Ranch Holdings LLC	19048	6957.0900	OR	M&Bs and plat - 6957.09 ac	861.4356	22,24	LCAD	41.3039	difference in LCAD	
13*	River Ranch Holdings, LLC	River Ranch Holdings LLC	19048	6957.0900	OR	M&Bs and plat - 6957.09 ac	861.4356	22,24	LCAD	41.3039	difference in LCAD	

PUC Item #	Landowner in Opt-out	Owner's Name Per LCAD, HCAD, or CCAD	Property ID # in LCAD, HCAD, or CCAD	Total Acreage in Request	OR=Original Request NCR=Non-conforming Request	Acreage & Source Provided in Opt-out Request	LCAD,HCAD, or CCAD Acreage per tract	Add'l PUC Item Nos. Assoc.	GIS Source of Acreage	Difference in Acreage Between LCAD, HCAD, or CCAD and Opt-Out Request	Reason for Difference in Acreage	Comments & Notes
13*	River Ranch Holdings, LLC	River Ranch Holdings LLC	19048	6957.0900	OR	M&Bs and plat - 6957.09 ac	861.4356	22,24	LCAD	41.3039	difference in LCAD	
13*	River Ranch Holdings, LLC	River Ranch Holdings LLC	19048	6957.0900	OR	M&Bs and plat - 6957.09 ac	861.4356	22,24	LCAD	41.3039	difference in LCAD	
13*	River Ranch Holdings, LLC	River Ranch Holdings LLC	19048	6957.0900	OR	M&Bs and plat - 6957.09 ac	861.4356	22,24	LCAD	41.3039	difference in LCAD	
13*	River Ranch Holdings, LLC	River Ranch Holdings LLC	19048	6957.0900	OR	M&Bs and plat - 6957.09 ac	861.4356	22,24	LCAD	41.3039	difference in LCAD	
13*	River Ranch Holdings, LLC	River Ranch Holdings LLC	28427	6957.0900	OR	M&Bs and plat - 6957.09 ac	14.7706	22,24	LCAD	41.3039	difference in LCAD	
13*	River Ranch Holdings, LLC	River Ranch Holdings LLC	28431	6957.0900	OR	M&Bs and plat - 6957.09 ac	12.8314	22,24	LCAD	41.3039	difference in LCAD	
13*	River Ranch Holdings, LLC	River Ranch Holdings LLC	28431	6957.0900	OR	M&Bs and plat - 6957.09 ac	12.8314	22,24	LCAD	41.3039	difference in LCAD	
13*	River Ranch Holdings, LLC	River Ranch Holdings LLC	28505	6957.0900	OR	M&Bs and plat - 6957.09 ac	216.7230	22,24	LCAD	41.3039	difference in LCAD	
13*	River Ranch Holdings, LLC	River Ranch Holdings LLC	28505	6957.0900	OR	M&Bs and plat - 6957.09 ac	216.7230	22,24	LCAD	41.3039	difference in LCAD	
13*	River Ranch Holdings, LLC	River Ranch Holdings LLC	28505	6957.0900	OR	M&Bs and plat - 6957.09 ac	216.7230	22,24	LCAD	41.3039	difference in LCAD	
13*	River Ranch Holdings, LLC	River Ranch Holdings LLC	30431	6957.0900	OR	M&Bs and plat - 6957.09 ac	245.6000	22,24	LCAD	41.3039	difference in LCAD	
13*	River Ranch Holdings, LLC	River Ranch Holdings LLC	31016	6957.0900	OR	M&Bs and plat - 6957.09 ac	425.3000	22,24	LCAD	41.3039	difference in LCAD	
13*	River Ranch Holdings, LLC	River Ranch Holdings LLC	31602	6957.0900	OR	M&Bs and plat - 6957.09 ac	433.8500	22,24	LCAD	41.3039	difference in LCAD	
13*	River Ranch Holdings, LLC	River Ranch Holdings LLC	31602	6957.0900	OR	M&Bs and plat - 6957.09 ac	433.8500	22,24	LCAD	41.3039	difference in LCAD	
13*	River Ranch Holdings, LLC	River Ranch Holdings LLC	31602	6957.0900	OR	M&Bs and plat - 6957.09 ac	433.8500	22,24	LCAD	41.3039	difference in LCAD	
13*	River Ranch Holdings, LLC	River Ranch Holdings LLC	31684	6957.0900	OR	M&Bs and plat - 6957.09 ac	510.3993	22,24	LCAD	41.3039	difference in LCAD	
13*	River Ranch Holdings, LLC	River Ranch Holdings LLC	31684	6957.0900	OR	M&Bs and plat - 6957.09 ac	510.3993	22,24	LCAD	41.3039	difference in LCAD	
13*	River Ranch Holdings, LLC	River Ranch Holdings LLC	133335	6957.0900	OR	M&Bs and plat - 6957.09 ac	370.0762	22,24	LCAD	41.3039	difference in LCAD	
13*	River Ranch Holdings, LLC	River Ranch Holdings LLC	135741	6957.0900	OR	M&Bs and plat - 6957.09 ac	2.5400	22,24	LCAD	41.3039	difference in LCAD	
13*	River Ranch Holdings, LLC	River Ranch Holdings LLC	155656	6957.0900	OR	M&Bs and plat - 6957.09 ac	2.0000	22,24	LCAD	41.3039	difference in LCAD	
13*	River Ranch Holdings, LLC	River Ranch Holdings LLC	228343	6957.0900	OR	M&Bs and plat - 6957.09 ac	168.7970	22,24	LCAD	41.3039	difference in LCAD	
13*	River Ranch Holdings, LLC	River Ranch Holdings LLC	228347	6957.0900	OR	M&Bs and plat - 6957.09 ac	35.9000	22,24	LCAD	41.3039	difference in LCAD	
13*	River Ranch Holdings, LLC	River Ranch Holdings LLC	228349	6957.0900	OR	M&Bs and plat - 6957.09 ac	49.3000	22,24	LCAD	41.3039	difference in LCAD	I don't find any reason for the acreage to be different. There aren't any save & exceptions in the deed & all tract parcels are accounted for.
14	Cedar Bayou Farms, Ltd	Cedar Bayou Farms, Ltd	16046	2699.6200	OR	Tract 1 M&Bs & plat - 640.00 ac	640.0000	n/a	LCAD	49.9200	difference in LCAD or CCAD	
14	Cedar Bayou Farms, Ltd	Cedar Bayou Farms, Ltd	31636	2699.6200	OR	Tract 2 M&Bs & plat - 206.0 ac	206.0000	n/a	LCAD	49.9200	difference in LCAD or CCAD	
14	Cedar Bayou Farms, Ltd	Cedar Bayou Farms, Ltd	31606	2699.6200	OR	Tract 3 M&Bs & plat - 397.7 ac	290.0000	n/a	LCAD	49.9500	difference in LCAD or CCAD	
14	Cedar Bayou Farms, Ltd	Cedar Bayou Farms, Ltd	31638	2699.6200	OR	Tract 3 M&Bs & plat - 397.7 ac	5.9400	n/a	LCAD	49.9200	difference in LCAD or CCAD	
14	Cedar Bayou Farms, Ltd	Cedar Bayou Farms, Ltd	31637	2699.6200	OR	Tract 3 M&Bs & plat - 397.7 ac	96.0000	n/a	LCAD	49.9200	difference in LCAD or CCAD	Tract 3 has save & except of approx. 6 ac in deed. (391.94+6=397.94)-397.7=0.24ac
14	Cedar Bayou Farms, Ltd	Cedar Bayou Farms, Ltd	17472	2699.6200	OR	Tract 4 M&Bs & plat - 1318.72 ac	1180.0000	n/a	LCAD	49.9200	difference in LCAD or CCAD	125.10 ac & 13.9 ac are in chambers county. See parcels 52531 & 1870.
14	Cedar Bayou Farms, Ltd	Cedar Bayou Farms, Ltd	1870	2699.6200	OR	Tract 4 M&Bs & plat - 1318.72 ac	125.1000	n/a	CCAD	49.9200	difference in LCAD or CCAD	Part of LCAD #17472 & CCAD #1870 (1318.72-1305.10=13.62)
14	Cedar Bayou Farms, Ltd	Cedar Bayou Farms, Ltd	22046	Total Acres 2699.62	OR	Tract 5 M&Bs & plat - 137.2 ac	106.6600	n/a	LCAD	49.9200	difference in LCAD or CCAD	LCAD lists 106.66 acres for this tract which does not match M&Bs. (137.2-106.66=30.54)
15	Stoesser Investments LLC	Stoesser Investments, LLC	214674	497.6590	NCR	Tract M1 M&Bs & plat - 7.249 ac	7.2500	Email	LCAD	1.6130	difference in LCAD	overall difference removing county road R.O.W. would be .088 ac
15	Stoesser Investments LLC	Stoesser Investments, LLC	25512	497.6590	NCR	Tract M10 M&Bs & plat - 96.94 ac	96.9400	Email	LCAD	1.6130	difference in LCAD	overall difference removing county road R.O.W. would be .088 ac







PUC Item #	Landowner in Opt-out	Owner's Name Per LCAD, HCAD, or CCAD	Property ID # in LCAD, HCAD, or CCAD	Total Acreage in Request	OR=Original Request NCR=Non-conforming Request	Acreage & Source Provided in Opt-out Request	LCAD,HCAD, or CCAD Acreage per tract	Add'l PUC Item Nos. Assoc.	GIS Source of Acreage	Difference in Acreage Between LCAD, HCAD, or CCAD and Opt-Out Request	Reason for Difference in Acreage	Comments & Notes
15	Stoesser Investments LLC	Stoesser Investments, LLC	25513	497.6590	NCR	Tract M9 M&Bs & plat - 57.93 ac	57.9300	Email	LCAD	1.6130	difference in LCAD	overall difference removing county road R.O.W. would be .088 ac
16	Mark Stoesser	Mark A. Stoesser	32826	343.1021	NCR	M&Bs & plat - 10.016 ac	10.0000	125	LCAD	1.1734	difference in LCAD and from save & except areas	0.16 ac less in LCAD than in M&Bs
16	Mark Stoesser	Mark A. Stoesser	30334	343.1021	NCR	M&Bs & plat - 32.063 ac	32.5000	125	LCAD	1.1734	difference in LCAD and from save & except areas	0.437 ac more in LCAD than in M&Bs
16	Mark Stoesser	Mark A. Stoesser	25413	343.1021	NCR	M&Bs & plat - 55.1041 ac	53.71	125	LCAD	1.1734	difference in LCAD and from save & except areas	requested overall acreage of 55.1041 instead of taking out the 1.4504 acres in road row
16	Mark Stoesser	Mark A. Stoesser	30333	343.1021	NCR	M&Bs & plat - 77.83 ac	74.0000	125	LCAD	1.1734	difference in LCAD and from save & except areas	Save & except 1.99 ac = 75.84 ac, leaving 1.84 ac difference (1.99 ac removed from total acres in request)
16	Mark Stoesser	Grand Parkway Infrastructure, LLC	245328	343.1021	NCR	M&Bs & plat - 170.079 ac	28.37	125	LCAD	1.1734	difference in LCAD and from save & except areas	sold this part of parcel 25414 in 9/2019
16	Mark Stoesser	Mark A. Stoesser	25414	343.1021	NCR	M&Bs & plat - 170.079 ac	141.6300	125	LCAD	1.1734	difference in LCAD and from save & except areas	0.0790 ac difference from M&Bs. sold part of this in 9/2019-see parcel #245328 / total area in deeds=345.0921.
16	Jack Stoesser	Jack Stoesser	23531	540.4700	NCR	LCAD property ID # - 69.38 ac	69.3800	126	LCAD	8.3800	difference in LCAD, plus owner submitted property ID# for 3.144 ac that isn't in the system	
16	Jack Stoesser	Jack Stoesser	23533	540.4700	NCR	LCAD property ID # - 55.67 ac	55.6700	126	LCAD	8.3800	difference in LCAD, plus owner submitted property ID# for 3.144 ac that isn't in the system	
16	Jack Stoesser	Jack Stoesser	23533	540.4700	NCR	LCAD property ID # - 55.67 ac	55.6700	126	LCAD	8.3800	difference in LCAD, plus owner submitted property ID# for 3.144 ac that isn't in the system	
16	Jack Stoesser	Jack Stoesser	23593	540.4700	NCR	LCAD property ID # - 0.30 ac	0.3000	126	LCAD	8.3800	difference in LCAD, plus owner submitted property ID# for 3.144 ac that isn't in the system	
16	Jack Stoesser	Jack Stoesser	25518	540.4700	NCR	LCAD property ID # - 2.0 ac	2.0000	126	LCAD	8.3800	difference in LCAD, plus owner submitted property ID# for 3.144 ac that isn't in the system	
16	Jack Stoesser	Jack Stoesser	29915	540.4700	NCR	LCAD property ID # - 30.0 ac	39.7200	126	LCAD	8.3800	difference in LCAD, plus owner submitted property ID# for 3.144 ac that isn't in the system	
16	Jack Stoesser	State of Texas	246955	540.4700	NCR	LCAD property ID # - 10.0 ac	0.2800	126	LCAD	8.3800	difference in LCAD, plus owner submitted property ID# for 3.144 ac that isn't in the system	
16	Jack Stoesser	Jack Stoesser	30277	540.4700	NCR	LCAD property ID # - 16 ac	16.0000	126	LCAD	8.3800	difference in LCAD, plus owner submitted property ID# for 3.144 ac that isn't in the system	
16	Jack Stoesser	Jack Stoesser	30921	540.4700	NCR	LCAD property ID # - 7.21 ac	7.2100	126	LCAD	8.3800	difference in LCAD, plus owner submitted property ID# for 3.144 ac that isn't in the system	
16	Jack Stoesser	Jack Stoesser	30921	540.4700	NCR	LCAD property ID # - 7.21 ac	7.2100	126	LCAD	8.3800	difference in LCAD, plus owner submitted property ID# for 3.144 ac that isn't in the system	
16	Jack Stoesser	Jack Stoesser	30932	540.4700	NCR	LCAD property ID # - 1.02 ac	1.0200	126	LCAD	8.3800	difference in LCAD, plus owner submitted property ID# for 3.144 ac that isn't in the system	
16	Jack Stoesser	Jack Stoesser	25515	540.4700	NCR	M&Bs & LCAD property ID# - 50.0 ac	50.0000	126	LCAD	8.3800	difference in LCAD, plus owner submitted property ID# for 3.144 ac that isn't in the system	
16	Jack Stoesser	Jack Stoesser	25362	540.4700	NCR	M&Bs & plat - 78.15 ac	15.7700	126	LCAD	8.3800	difference in LCAD, plus owner submitted property ID# for 3.144 ac that isn't in the system	
16	Jack Stoesser	Jack Stoesser	25364	540.4700	NCR	M&Bs & plat - 78.15 ac	10.8100	126	LCAD	8.3800	difference in LCAD, plus owner submitted property ID# for 3.144 ac that isn't in the system	
16	Jack Stoesser	Jack Stoesser	25365	540.4700	NCR	M&Bs & plat - 78.15 ac	17.3600	126	LCAD	8.3800	difference in LCAD, plus owner submitted property ID# for 3.144 ac that isn't in the system	
16	Jack Stoesser	Jack Stoesser	25366	540.4700	NCR	M&Bs & plat - 78.15 ac	16.4900	126	LCAD	8.3800	difference in LCAD, plus owner submitted property ID# for 3.144 ac that isn't in the system	
16	Jack Stoesser	Jack Stoesser	192881	540.4700	NCR	M&Bs & plat - 78.15 ac	8.1100	126	LCAD	8.3800	difference in LCAD, plus owner submitted property ID# for 3.144 ac that isn't in the system	

PUC Item #	Landowner in Opt-out	Owner's Name Per LCAD, HCAD, or CCAD	Property ID # in LCAD, HCAD, or CCAD	Total Acreage in Request	OR=Original Request NCR=Non-conforming Request	Acreage & Source Provided in Opt-out Request	LCAD,HCAD, or CCAD Acreage per tract	Add'l PUC Item Nos. Assoc.	GIS Source of Acreage	Difference in Acreage Between LCAD, HCAD, or CCAD and Opt-Out Request	Reason for Difference in Acreage	Comments & Notes
16	Jack Stoesser	Jack Stoesser	25361	540.4700	NCR	M&Bs & plat - 78.15 ac	144.3800	126	LCAD	8.3800	difference in LCAD, plus owner submitted property ID# for 3.144 ac that isn't in the system	
16	Jack Stoesser	Jack Stoesser	27619	540.4700	NCR	M&Bs & plat - 78.15 ac	26.1400	126	LCAD	8.3800	difference in LCAD, plus owner submitted property ID# for 3.144 ac that isn't in the system	
16	Jack Stoesser	Jack Stoesser	27619	540.4700	NCR	M&Bs & plat - 78.15 ac	26.1400	126	LCAD	8.3800	difference in LCAD, plus owner submitted property ID# for 3.144 ac that isn't in the system	
16	Jack Stoesser	Jack Stoesser	192875	540.4700	NCR	M&Bs & plat - 78.15 ac	10.1000	126	LCAD	8.3800	difference in LCAD, plus owner submitted property ID# for 3.144 ac that isn't in the system	
16	Jack Stoesser	Jack Stoesser	192876	540.4700	NCR	M&Bs & plat - 78.15 ac	18.3000	126	LCAD	8.3800	difference in LCAD, plus owner submitted property ID# for 3.144 ac that isn't in the system	
16	Jack Stoesser	Jack Stoesser	192877	540.4700	NCR	M&Bs & plat - 78.15 ac	5.0000	126	LCAD	8.3800	difference in LCAD, plus owner submitted property ID# for 3.144 ac that isn't in the system	
16	Jack Stoesser	Jack Stoesser	192878	540.4700	NCR	M&Bs & plat - 78.15 ac	8.6000	126	LCAD	8.3800	difference in LCAD, plus owner submitted property ID# for 3.144 ac that isn't in the system	
16	Jack Stoesser	Jack Stoesser	192879	540.4700	NCR	M&Bs & plat - 78.15 ac	9.4500	126	LCAD	8.3800	difference in LCAD, plus owner submitted property ID# for 3.144 ac that isn't in the system	
16	Stoesser Drier, Inc.	Stoesser Drier, Inc.	102329	252.2090	OR	M&Bs & plat - 244.60ac	146.9500	n/a	LCAD	0.9810	difference in LCAD	Stoesser Drier information submitted was not clearly defined from all other Stoesser information. Picked through it and compared to LCAD.
16	Stoesser Drier, Inc.	Stoesser Drier, Inc.	102330	252.2090	OR	M&Bs & plat - 244.60ac	92.0000	n/a	LCAD	0.9810	difference in LCAD	Stoesser Drier information submitted was not clearly defined from all other Stoesser information. Picked through it and compared to LCAD.
16	Stoesser Drier, Inc.	Stoesser Drier, Inc.	31683	252.2090	OR	M&Bs & plat - 244.60ac	7.4900	n/a	LCAD	0.9810	difference in LCAD	Stoesser Drier information submitted was not clearly defined from all other Stoesser information. Picked through it and compared to LCAD.
16	Stoesser Drier, Inc.	Stoesser Drier, Inc.	31683	252.2090	OR	M&Bs & plat - 244.60ac	7.4900	n/a	LCAD	0.9810	difference in LCAD	Stoesser Drier information submitted was not clearly defined from all other Stoesser information. Picked through it and compared to LCAD.
16	Stoesser Drier, Inc.	Stoesser Drier, Inc.	198943	252.2090	OR	M&Bs & plat - 244.60ac	1.2600	n/a	LCAD	0.9810	difference in LCAD	Stoesser Drier information submitted was not clearly defined from all other Stoesser information. Picked through it and compared to LCAD.
16	Stoesser Drier, Inc.	Stoesser Drier, Inc.	242832	252.2090	OR	M&Bs & plat - 244.60ac	3.5280	n/a	LCAD	0.9810	difference in LCAD	Stoesser Drier information submitted was not clearly defined from all other Stoesser information. Picked through it and compared to LCAD.
21	Walter Wallace Wade	WW Wade	58658	1.0000	OR	M&Bs, LCAD Property ID# - 1.0 ac	1.0000	n/a	LCAD			parcel ID# provided, some maps for lot 12 are included but unreadable, map of LCAD is clear
21	Walter Wallace Wade	WW Wade & Company	58659	39.0000	OR	Legal Description of Lot 12, Property ID# - 39.0 ac	39.0000	n/a	LCAD			parcel ID# provided, some maps for lot 12 are included but unreadable, map of LCAD is clear
22	River Ranch Holdings, LLC	River Ranch Holdings LLC	10031	6957.0900	OR	M&Bs and plat - 6957.09 ac	46.5730	13,24	LCAD	41.3039	difference in LCAD	
22	River Ranch Holdings, LLC	River Ranch Holdings LLC	10955	6957.0900	OR	M&Bs and plat - 6957.09 ac	3519.6900	13,24	LCAD	41.3039	difference in LCAD	
22	River Ranch Holdings, LLC	River Ranch Holdings LLC	19048	6957.0900	OR	M&Bs and plat - 6957.09 ac	861.4356	13,24	LCAD	41.3039	difference in LCAD	
22	River Ranch Holdings, LLC	River Ranch Holdings LLC	19048	6957.0900	OR	M&Bs and plat - 6957.09 ac	861.4356	13,24	LCAD	41.3039	difference in LCAD	
22	River Ranch Holdings, LLC	River Ranch Holdings LLC	19048	6957.0900	OR	M&Bs and plat - 6957.09 ac	861.4356	13,24	LCAD	41.3039	difference in LCAD	
22	River Ranch Holdings, LLC	River Ranch Holdings LLC	19048	6957.0900	OR	M&Bs and plat - 6957.09 ac	861.4356	13,24	LCAD	41.3039	difference in LCAD	
22	River Ranch Holdings, LLC	River Ranch Holdings LLC	19048	6957.0900	OR	M&Bs and plat - 6957.09 ac	861.4356	13,24	LCAD	41.3039	difference in LCAD	
22	River Ranch Holdings, LLC	River Ranch Holdings LLC	19048	6957.0900	OR	M&Bs and plat - 6957.09 ac	861.4356	13,24	LCAD	41.3039	difference in LCAD	

PUC Item #	Landowner in Opt-out	Owner's Name Per LCAD, HCAD, or CCAD	Property ID # in LCAD, HCAD, or CCAD	Total Acreage in Request	OR=Original Request NCR=Non-conforming Request	Acreage & Source Provided in Opt-out Request	LCAD, HCAD, or CCAD Acreage per tract	Add'l PUC Item Nos. Assoc.	GIS Source of Acreage	Difference in Acreage Between LCAD, HCAD, or CCAD and Opt-Out Request	Reason for Difference in Acreage	Comments & Notes
22	River Ranch Holdings, LLC	River Ranch Holdings LLC	19048	6957.0900	OR	M&Bs and plat - 6957.09 ac	861.4356	13,24	LCAD	41.3039	difference in LCAD	
22	River Ranch Holdings, LLC	River Ranch Holdings LLC	19048	6957.0900	OR	M&Bs and plat - 6957.09 ac	861.4356	13,24	LCAD	41.3039	difference in LCAD	
22	River Ranch Holdings, LLC	River Ranch Holdings LLC	28427	6957.0900	OR	M&Bs and plat - 6957.09 ac	14.7706	13,24	LCAD	41.3039	difference in LCAD	
22	River Ranch Holdings, LLC	River Ranch Holdings LLC	28431	6957.0900	OR	M&Bs and plat - 6957.09 ac	12.8314	13,24	LCAD	41.3039	difference in LCAD	
22	River Ranch Holdings, LLC	River Ranch Holdings LLC	28431	6957.0900	OR	M&Bs and plat - 6957.09 ac	12.8314	13,24	LCAD	41.3039	difference in LCAD	
22	River Ranch Holdings, LLC	River Ranch Holdings LLC	28505	6957.0900	OR	M&Bs and plat - 6957.09 ac	216.7230	13,24	LCAD	41.3039	difference in LCAD	
22	River Ranch Holdings, LLC	River Ranch Holdings LLC	28505	6957.0900	OR	M&Bs and plat - 6957.09 ac	216.7230	13,24	LCAD	41.3039	difference in LCAD	
22	River Ranch Holdings, LLC	River Ranch Holdings LLC	28505	6957.0900	OR	M&Bs and plat - 6957.09 ac	216.7230	13,24	LCAD	41.3039	difference in LCAD	
22	River Ranch Holdings, LLC	River Ranch Holdings LLC	30431	6957.0900	OR	M&Bs and plat - 6957.09 ac	245.6000	13,24	LCAD	41.3039	difference in LCAD	
22	River Ranch Holdings, LLC	River Ranch Holdings LLC	31016	6957.0900	OR	M&Bs and plat - 6957.09 ac	425.3000	13,24	LCAD	41.3039	difference in LCAD	
22	River Ranch Holdings, LLC	River Ranch Holdings LLC	31602	6957.0900	OR	M&Bs and plat - 6957.09 ac	433.8500	13,24	LCAD	41.3039	difference in LCAD	
22	River Ranch Holdings, LLC	River Ranch Holdings LLC	31602	6957.0900	OR	M&Bs and plat - 6957.09 ac	433.8500	13,24	LCAD	41.3039	difference in LCAD	
22	River Ranch Holdings, LLC	River Ranch Holdings LLC	31602	6957.0900	OR	M&Bs and plat - 6957.09 ac	433.8500	13,24	LCAD	41.3039	difference in LCAD	
22	River Ranch Holdings, LLC	River Ranch Holdings LLC	31684	6957.0900	OR	M&Bs and plat - 6957.09 ac	510.3993	13,24	LCAD	41.3039	difference in LCAD	
22	River Ranch Holdings, LLC	River Ranch Holdings LLC	31684	6957.0900	OR	M&Bs and plat - 6957.09 ac	510.3993	13,24	LCAD	41.3039	difference in LCAD	
22	River Ranch Holdings, LLC	River Ranch Holdings LLC	133335	6957.0900	OR	M&Bs and plat - 6957.09 ac	370.0762	13,24	LCAD	41.3039	difference in LCAD	
22	River Ranch Holdings, LLC	River Ranch Holdings LLC	135741	6957.0900	OR	M&Bs and plat - 6957.09 ac	2.5400	13,24	LCAD	41.3039	difference in LCAD	
22	River Ranch Holdings, LLC	River Ranch Holdings LLC	155656	6957.0900	OR	M&Bs and plat - 6957.09 ac	2.0000	13,24	LCAD	41.3039	difference in LCAD	
22	River Ranch Holdings, LLC	River Ranch Holdings LLC	228343	6957.0900	OR	M&Bs and plat - 6957.09 ac	168.7970	13,24	LCAD	41.3039	difference in LCAD	
22	River Ranch Holdings, LLC	River Ranch Holdings LLC	228347	6957.0900	OR	M&Bs and plat - 6957.09 ac	35.9000	13,24	LCAD	41.3039	difference in LCAD	
22	River Ranch Holdings, LLC	River Ranch Holdings LLC	228349	6957.0900	OR	M&Bs and plat - 6957.09 ac	49.3000	13,24	LCAD	41.3039	difference in LCAD	I don't find any reason for the acreage to be different. There aren't any save & exceptions in the deed & all tract parcels are accounted for.
23	Michael Pomykal	Michael Pomykal Trustee	136522	82.7253	OR	M&Bs, tax receipt, parcel info. - 19.2853 ac	19.2853	n/a	LCAD			Majority of this tract is in Chambers County, but they are only requesting the 19+ ac in Liberty Co.
23	Michael Pomykal	Michael Pomykal Trustee	130606	82.7253	OR	M&Bs, tax receipt, parcel info. - 42.62 ac	42.6200	n/a	LCAD			
23	Michael Pomykal	Michael S. Pomykal	19990	82.7253	OR	M&Bs, tax receipt, parcel info. - 10.41 ac	10.4100	n/a	LCAD			
23	Michael Pomykal	Michael S. Pomykal	19991	82.7253	OR	M&Bs, tax receipt, parcel info. - 10.41 ac	10.4100	n/a	LCAD			
24	River Ranch Holdings, LLC	River Ranch Holdings LLC	10031	6957.0900	OR	M&Bs and plat - 6957.09 ac	46.5730	13,22	LCAD	41.3039	difference in LCAD	
24	River Ranch Holdings, LLC	River Ranch Holdings LLC	10955	6957.0900	OR	M&Bs and plat - 6957.09 ac	3519.6900	13,22	LCAD	41.3039	difference in LCAD	
24	River Ranch Holdings, LLC	River Ranch Holdings LLC	19048	6957.0900	OR	M&Bs and plat - 6957.09 ac	861.4356	13,22	LCAD	41.3039	difference in LCAD	
24	River Ranch Holdings, LLC	River Ranch Holdings LLC	19048	6957.0900	OR	M&Bs and plat - 6957.09 ac	861.4356	13,22	LCAD	41.3039	difference in LCAD	
24	River Ranch Holdings, LLC	River Ranch Holdings LLC	19048	6957.0900	OR	M&Bs and plat - 6957.09 ac	861.4356	13,22	LCAD	41.3039	difference in LCAD	
24	River Ranch Holdings, LLC	River Ranch Holdings LLC	19048	6957.0900	OR	M&Bs and plat - 6957.09 ac	861.4356	13,22	LCAD	41.3039	difference in LCAD	
24	River Ranch Holdings, LLC	River Ranch Holdings LLC	19048	6957.0900	OR	M&Bs and plat - 6957.09 ac	861.4356	13,22	LCAD	41.3039	difference in LCAD	

PUC Item #	Landowner in Opt-out	Owner's Name Per LCAD, HCAD, or CCAD	Property ID # in LCAD, HCAD, or CCAD	Total Acreage in Request	OR=Original Request NCR=Non-conforming Request	Acreage & Source Provided in Opt-out Request	LCAD,HCAD, or CCAD Acreage per tract	Add'l PUC Item Nos. Assoc.	GIS Source of Acreage	Difference in Acreage Between LCAD, HCAD, or CCAD and Opt-Out Request	Reason for Difference in Acreage	Comments & Notes
24	River Ranch Holdings, LLC	River Ranch Holdings LLC	19048	6957.0900	OR	M&Bs and plat - 6957.09 ac	861.4356	13,22	LCAD	41.3039	difference in LCAD	
24	River Ranch Holdings, LLC	River Ranch Holdings LLC	19048	6957.0900	OR	M&Bs and plat - 6957.09 ac	861.4356	13,22	LCAD	41.3039	difference in LCAD	
24	River Ranch Holdings, LLC	River Ranch Holdings LLC	19048	6957.0900	OR	M&Bs and plat - 6957.09 ac	861.4356	13,22	LCAD	41.3039	difference in LCAD	
24	River Ranch Holdings, LLC	River Ranch Holdings LLC	28427	6957.0900	OR	M&Bs and plat - 6957.09 ac	14.7706	13,22	LCAD	41.3039	difference in LCAD	
24	River Ranch Holdings, LLC	River Ranch Holdings LLC	28431	6957.0900	OR	M&Bs and plat - 6957.09 ac	12.8314	13,22	LCAD	41.3039	difference in LCAD	
24	River Ranch Holdings, LLC	River Ranch Holdings LLC	28431	6957.0900	OR	M&Bs and plat - 6957.09 ac	12.8314	13,22	LCAD	41.3039	difference in LCAD	
24	River Ranch Holdings, LLC	River Ranch Holdings LLC	28505	6957.0900	OR	M&Bs and plat - 6957.09 ac	216.7230	13,22	LCAD	41.3039	difference in LCAD	
24	River Ranch Holdings, LLC	River Ranch Holdings LLC	28505	6957.0900	OR	M&Bs and plat - 6957.09 ac	216.7230	13,22	LCAD	41.3039	difference in LCAD	
24	River Ranch Holdings, LLC	River Ranch Holdings LLC	28505	6957.0900	OR	M&Bs and plat - 6957.09 ac	216.7230	13,22	LCAD	41.3039	difference in LCAD	
24	River Ranch Holdings, LLC	River Ranch Holdings LLC	30431	6957.0900	OR	M&Bs and plat - 6957.09 ac	245.6000	13,22	LCAD	41.3039	difference in LCAD	
24	River Ranch Holdings, LLC	River Ranch Holdings LLC	31016	6957.0900	OR	M&Bs and plat - 6957.09 ac	425.3000	13,22	LCAD	41.3039	difference in LCAD	
24	River Ranch Holdings, LLC	River Ranch Holdings LLC	31602	6957.0900	OR	M&Bs and plat - 6957.09 ac	433.8500	13,22	LCAD	41.3039	difference in LCAD	
24	River Ranch Holdings, LLC	River Ranch Holdings LLC	31602	6957.0900	OR	M&Bs and plat - 6957.09 ac	433.8500	13,22	LCAD	41.3039	difference in LCAD	
24	River Ranch Holdings, LLC	River Ranch Holdings LLC	31602	6957.0900	OR	M&Bs and plat - 6957.09 ac	433.8500	13,22	LCAD	41.3039	difference in LCAD	
24	River Ranch Holdings, LLC	River Ranch Holdings LLC	31684	6957.0900	OR	M&Bs and plat - 6957.09 ac	510.3993	13,22	LCAD	41.3039	difference in LCAD	
24	River Ranch Holdings, LLC	River Ranch Holdings LLC	31684	6957.0900	OR	M&Bs and plat - 6957.09 ac	510.3993	13,22	LCAD	41.3039	difference in LCAD	
24	River Ranch Holdings, LLC	River Ranch Holdings LLC	133335	6957.0900	OR	M&Bs and plat - 6957.09 ac	370.0762	13,22	LCAD	41.3039	difference in LCAD	
24	River Ranch Holdings, LLC	River Ranch Holdings LLC	135741	6957.0900	OR	M&Bs and plat - 6957.09 ac	2.5400	13,22	LCAD	41.3039	difference in LCAD	
24	River Ranch Holdings, LLC	River Ranch Holdings LLC	155656	6957.0900	OR	M&Bs and plat - 6957.09 ac	2.0000	13,22	LCAD	41.3039	difference in LCAD	
24	River Ranch Holdings, LLC	River Ranch Holdings LLC	228343	6957.0900	OR	M&Bs and plat - 6957.09 ac	168.7970	13,22	LCAD	41.3039	difference in LCAD	
24	River Ranch Holdings, LLC	River Ranch Holdings LLC	228347	6957.0900	OR	M&Bs and plat - 6957.09 ac	35.9000	13,22	LCAD	41.3039	difference in LCAD	
24	River Ranch Holdings, LLC	River Ranch Holdings LLC	228349	6957.0900	OR	M&Bs and plat - 6957.09 ac	49.3000	13,22	LCAD	41.3039	difference in LCAD	I don't find any reason for the acreage to be different. There aren't any save & exceptions in the deed & all tract parcels are accounted for.
25	Liberty RV LLC	Liberty RV LLC	193825	26.0000	OR	26.0 ac - Information was unreadable	26.0000	n/a	LCAD			mostly unreadable LCAD map provided but they only have the one tract of land
26	Mary Gay Corporation	Mary Gay Corporation	20880	695.9800	NCR	M&Bs & Plat - 695.98 ac	1427.5600	121	LCAD	731.5800	LCAD not updated with new tract information	The Mary Gay Corporation only asked for 695.98 ac on the west side of FM 1409 to be in the opt-out, and provided a new deed showing only the tract requested April 14, 2020.
26	Mary Gay Corporation	Mary Gay Corporation	20880	695.9800	NCR	M&Bs & Plat - 695.98 ac	1427.5600	121	LCAD	731.5800	LCAD not updated with new tract information	The Mary Gay Corporation only asked for 695.98 ac on the west side of FM 1409 to be in the opt-out, and provided a new deed showing only the tract requested April 14, 2020.
27*	FVL, Ltd	FVL, Ltd	29417	2163.4860	OR	M&Bs - 2163.486 ac	269.4000	40,45	LCAD	0.046 ac	difference in LCAD,CCAD	Some of this parcel is in Chambers County. See #9241 and #53692 and #61075 and #61076.
27*	FVL, Ltd	FVL, Ltd	9241	2163.4860	OR	M&Bs - 2163.486 ac	516.1580	40,45	CCAD	0.046 ac	difference in LCAD,CCAD	This is a portion of #29417 that is in Chambers County.
27*	FVL, Ltd	FVL, Ltd	9241	2163.4860	OR	M&Bs - 2163.486 ac	516.1580	40,45	CCAD	0.046 ac	difference in LCAD,CCAD	This is a portion of #29417 that is in Chambers County.
27*	FVL, Ltd	FVL, Ltd	61075	2163.4860	OR	M&Bs - 2163.486 ac	16.1660	40,45	CCAD	0.046 ac	difference in LCAD,CCAD	This is a portion of #29417 that is in Chambers County.
27*	FVL, Ltd	FVL, Ltd	61076	2163.4860	OR	M&Bs - 2163.486 ac	11.0000	40,45	CCAD	0.046 ac	difference in LCAD,CCAD	This is a portion of #29417 that is in Chambers County.
27*	FVL, Ltd	FVL, Ltd	53692	2163.4860	OR	M&Bs - 2163.486 ac	54.6860	40,45	CCAD	0.046 ac	difference in LCAD,CCAD	This is a portion of #29417 that is in Chambers County.

PUC Item #	Landowner in Opt-out	Owner's Name Per LCAD, HCAD, or CCAD	Property ID # in LCAD, HCAD, or CCAD	Total Acreage in Request	OR=Original Request NCR=Non-conforming Request	Acreage & Source Provided in Opt-out Request	LCAD,HCAD, or CCAD Acreage per tract	Add'l PUC Item Nos. Assoc.	GIS Source of Acreage	Difference in Acreage Between LCAD, HCAD, or CCAD and Opt-Out Request	Reason for Difference in Acreage	Comments & Notes
27*	FVL, Ltd	FVL, Ltd	53692	2,163.49	OR	M&Bs - 2163.486 ac	54.6860	40,45	CCAD	0.046 ac	difference in LCAD,CCAD	This is a portion of #2917 that is in Chambers County.
27*	FVL, Ltd	FVL, Ltd	29862	2163.4860	OR	M&Bs - 2163.486 ac	94.8100	40,45	LCAD	0.046 ac	difference in LCAD,CCAD	Some of this parcel is in Chambers County. See #9244.
27*	FVL, Ltd	Environmental Processing Systems, LC	124646	2163.4860	OR	M&Bs - 2163.486 ac	5.0000	40,45	LCAD	0.046 ac	difference in LCAD,CCAD	Listed as a Purchase Option by FVL?
27*	FVL, Ltd	FVL, Ltd	9244	2163.4860	OR	M&Bs - 2163.486 ac	68.5400	40,45	CCAD	0.046 ac	difference in LCAD,CCAD	This is the portion of #29862 that is in Chambers County.
27*	FVL, Ltd	FVL, Ltd	28413	2163.4860	OR	M&Bs - 2163.486 ac	580.2400	40,45	LCAD	0.046 ac	difference in LCAD,CCAD	
27*	FVL, Ltd	FVL, Ltd	29861	2163.4860	OR	M&Bs - 2163.486 ac	202.9100	40,45	LCAD	0.046 ac	difference in LCAD,CCAD	
27*	FVL, Ltd	FVL, Ltd	31810	2163.4860	OR	M&Bs - 2163.486 ac	210.1200	40,45	LCAD	0.046 ac	difference in LCAD,CCAD	
27*	FVL, Ltd	FVL, Ltd	31813	2163.4860	OR	M&Bs - 2163.486 ac	46.0000	40,45	LCAD	0.046 ac	difference in LCAD,CCAD	
27*	FVL, Ltd	FVL, Ltd	31155	2163.4860	OR	M&Bs - 2163.486 ac	55.4500	40,45	LCAD	0.046 ac	difference in LCAD,CCAD	Some of this parcel is in Chambers County. See #5540.
27*	FVL, Ltd	FVL, Ltd	31155	2163.4860	OR	M&Bs - 2163.486 ac	55.4500	40,45	LCAD	0.046 ac	difference in LCAD,CCAD	Some of this parcel is in Chambers County. See #5540.
27*	FVL, Ltd	FVL, Ltd	31155	2163.4860	OR	M&Bs - 2163.486 ac	55.4500	40,45	LCAD	0.046 ac	difference in LCAD,CCAD	Some of this parcel is in Chambers County. See #5540.
27*	FVL, Ltd	FVL, Ltd	5540	2163.4860	OR	M&Bs - 2163.486 ac	33.0520	40,45	CCAD	0.046 ac	difference in LCAD,CCAD	This is the portion of #31155 that is in Chambers County.
28*	FPL Farming, Ltd (FPLF -2)	FPL Farming LTD	29415	1081.7430	OR	M&Bs - 1081.743 ac	667.2600	39,42	LCAD			FPL Farming made 2 separate and different submittals, 3 times each. This one I labelled FPLF-2.
28*	FPL Farming, Ltd (FPLF -2)	FPL Farming LTD	29857	1081.7430	OR	M&Bs - 1081.743 ac	241.8800	39,42	LCAD			FPL Farming made 2 separate and different submittals, 3 times each. This one I labelled FPLF-2.
28*	FPL Farming, Ltd (FPLF -2)	FPL Farming LTD	29857	1081.7430	OR	M&Bs - 1081.743 ac	241.8800	39,42	LCAD			FPL Farming made 2 separate and different submittals, 3 times each. This one I labelled FPLF-2.
28*	FPL Farming, Ltd (FPLF -2)	FPL Farming LTD	31607	1081.7430	OR	M&Bs - 1081.743 ac	6.0000	39,42	LCAD			FPL Farming made 2 separate and different submittals, 3 times each. This one I labelled FPLF-2.
28*	FPL Farming, Ltd (FPLF -2)	FPL Farming LTD	29416	1081.7430	OR	M&Bs - 1081.743 ac	92.6000	39,42	LCAD			FPL Farming made 2 separate and different submittals, 3 times each. This one I labelled FPLF-2.
28*	FPL Farming, Ltd (FPLF -2)	FPL Farming LTD	28416	1081.7430	OR	M&Bs - 1081.743 ac	38.0000	39,42	LCAD			FPL Farming made 2 separate and different submittals, 3 times each. This one I labelled FPLF-2.
28*	FPL Farming, Ltd (FPLF -2)	FPL Farming LTD	31816	1081.7430	OR	M&Bs - 1081.743 ac	36.0000	39,42	LCAD			FPL Farming made 2 separate and different submittals, 3 times each. This one I labelled FPLF-2.
29*	FPL Farming, Ltd	FPL Farming, Ltd	16030	1140.6400	OR	M&Bs - 1140.64 ac	766.6040	44,51	LCAD	4.5469	Difference in LCAD/HCAD	Some of this tract is in Harris County. See #402830000113 & #402830000056.
29*	FPL Farming, Ltd	FPL Farming, Ltd	402830000113	1140.6400	OR	M&Bs - 1140.64 ac	6.7330	44,51	HCAD	4.5469	Difference in LCAD/HCAD	This is a portion of #16030 that is in Harris County.
29*	FPL Farming, Ltd	FPL Farming, Ltd	402830000056	1140.6400	OR	M&Bs - 140.64 ac	17.0529	44,51	HCAD	4.5469	Difference in LCAD/HCAD	This is a portion of #16030 that is in Harris County.
29*	FPL Farming, Ltd	FPL Farming, Ltd	124615	1140.6400	OR	M&Bs - 1140.64 ac	155.8980	44,51	LCAD	4.5469	Difference in LCAD/HCAD	Not sure where the extra 4+ acres comes from
29*	FPL Farming, Ltd	FPL Farming, Ltd	16029	1140.6400	OR	M&Bs - 1140.64 ac	26.6012	44,51	LCAD	4.5469	Difference in LCAD/HCAD	Not sure where the extra 4+ acres comes from
29*	FPL Farming, Ltd	FPL Farming, Ltd	214085	1140.6400	OR	M&Bs - 1140.64 ac	159.7270	44,51	LCAD	4.5469	Difference in LCAD/HCAD	Some of this tract is in Harris County. See #402830000115 & #402830000114.
29*	FPL Farming, Ltd	FPL Farming, Ltd	402830000115	1140.6400	OR	M&Bs - 1140.64 ac	0.8600	44,51	HCAD	4.5469	Difference in LCAD/HCAD	This is a portion of #214085 that is in Harris County.
29*	FPL Farming, Ltd	FPL Farming, Ltd	402830000114	1140.6400	OR	M&Bs - 1140.64 a	2.6170	44,51	HCAD	4.5469	Difference in LCAD/HCAD	This is a portion of #214085 that is in Harris County.
30	Third Texas Resources, LLC	Joseph Dow	193139	394.3016	OR	unreadable plat - 394.3016 ac	321.0122	n/a	LCAD			aerial w/property outlined is readable but plat is not, so no M&B, but LCAD acreage total matches total acreage requested. Property sold to Joseph Dow June, 2019.
30	Third Texas Resources, LLC	Joseph Dow	193140	394.3016	OR	unreadable plat - 394.3016 ac	68.1917	n/a	LCAD			aerial w/property outlined is readable but plat is not, so no M&B, but LCAD acreage total matches total acreage requested. Property sold to Joseph Dow June, 2019.
30	Third Texas Resources, LLC	Joseph Dow	193141	394.3016	OR	unreadable plat - 394.3016 ac	5.0977	n/a	LCAD			aerial w/property outlined is readable but plat is not, so no M&B, but LCAD acreage total matches total acreage requested. Property sold to Joseph Dow June, 2019.
31	Precab, Inc	Precab, Inc	25264	1400.0000	OR	M&Bs - 1400 ac	29.0000	n/a	LCAD	3.5437	difference in LCAD	
31	Precab, Inc	Precab, Inc	25272	1400.0000	OR	M&Bs - 1400 ac	50.3500	n/a	LCAD	3.5437	difference in LCAD	



PUC Item #	Landowner in Opt-out	Owner's Name Per LCAD, HCAD, or CCAD	Property ID # in LCAD, HCAD, or CCAD	Total Acreage in Request	OR=Original Request NCR=Non-conforming Request	Acreage & Source Provided in Opt-out Request	LCAD, HCAD, or CCAD Acreage per tract	Add'l PUC Item Nos. Assoc.	GIS Source of Acreage	Difference in Acreage Between LCAD, HCAD, or CCAD and Opt-Out Request	Reason for Difference in Acreage	Comments & Notes
31	Precab, Inc	Precab, Inc	31839	1400.0000	OR	M&Bs - 1400 ac	86.4900	n/a	LCAD	3.5437	difference in LCAD	
31	Precab, Inc	Precab, Inc	101650	1400.0000	OR	M&Bs - 1400 ac	23.2600	n/a	LCAD	3.5437	difference in LCAD	
31	Precab, Inc	Precab, Inc	101650	1400.0000	OR	M&Bs - 1400 ac	23.2600	n/a	LCAD	3.5437	difference in LCAD	
31	Precab, Inc	Precab, Inc	101650	1400.0000	OR	M&Bs - 1400 ac	23.2600	n/a	LCAD	3.5437	difference in LCAD	
31	Precab, Inc	Precab, Inc	101651	1400.0000	OR	M&Bs - 1400 ac	1.6670	n/a	LCAD	3.5437	difference in LCAD	
31	Precab, Inc	Precab, Inc	101652	1400.0000	OR	M&Bs - 1400 ac	1.6700	n/a	LCAD	3.5437	difference in LCAD	
31	Precab, Inc	Precab, Inc	101653	1400.0000	OR	M&Bs - 1400 ac	5.0000	n/a	LCAD	3.5437	difference in LCAD	
31	Precab, Inc	Precab, Inc	101653	1400.0000	OR	M&Bs - 1400 ac	5.0000	n/a	LCAD	3.5437	difference in LCAD	
31	Precab, Inc	Precab, Inc	101657	1400.0000	OR	M&Bs - 1400 ac	6.0000	n/a	LCAD	3.5437	difference in LCAD	
31	Precab, Inc	Precab, Inc	101657	1400.0000	OR	M&Bs - 1400 ac	6.0000	n/a	LCAD	3.5437	difference in LCAD	
31	Precab, Inc	Precab, Inc	101660	1400.0000	OR	M&Bs - 1400 ac	4.0000	n/a	LCAD	3.5437	difference in LCAD	
31	Precab, Inc	Precab, Inc	101661	1400.0000	OR	M&Bs - 1400 ac	6.4300	n/a	LCAD	3.5437	difference in LCAD	
31	Precab, Inc	Precab, Inc	101671	1400.0000	OR	M&Bs - 1400 ac	10.0000	n/a	LCAD	3.5437	difference in LCAD	
31	Precab, Inc	Precab, Inc	102047	1400.0000	OR	M&Bs - 1400 ac	10.0000	n/a	LCAD	3.5437	difference in LCAD	
31	Precab, Inc	Precab, Inc	102058	1400.0000	OR	M&Bs - 1400 ac	8.3300	n/a	LCAD	3.5437	difference in LCAD	
31	Precab, Inc	Precab, Inc	102062	1400.0000	OR	M&Bs - 1400 ac	8.3300	n/a	LCAD	3.5437	difference in LCAD	
31	Precab, Inc	Precab, Inc	102063	1400.0000	OR	M&Bs - 1400 ac	9.1800	n/a	LCAD	3.5437	difference in LCAD	
31	Precab, Inc	Precab, Inc	102078	1400.0000	OR	M&Bs - 1400 ac	63.1900	n/a	LCAD	3.5437	difference in LCAD	was parcels 30330, 102081, 102079, 102080, 102076,
31	Precab, Inc	Precab, Inc	102078	1400.0000	OR	M&Bs - 1400 ac	63.1900	n/a	LCAD	3.5437	difference in LCAD	was parcels 30330, 102081, 102079, 102080, 102076,
31	Precab, Inc	Precab, Inc	102078	1400.0000	OR	M&Bs - 1400 ac	63.1900	n/a	LCAD	3.5437	difference in LCAD	was parcels 30330, 102081, 102079, 102080, 102076,
31	Precab, Inc	Precab, Inc	102078	1400.0000	OR	M&Bs - 1400 ac	63.1900	n/a	LCAD	3.5437	difference in LCAD	was parcels 30330, 102081, 102079, 102080, 102076,
31	Precab, Inc	Precab, Inc	102078	1400.0000	OR	M&Bs - 1400 ac	63.1900	n/a	LCAD	3.5437	difference in LCAD	was parcels 30330, 102081, 102079, 102080, 102076,
31	Precab, Inc	Precab, Inc	102078	1400.0000	OR	M&Bs - 1400 ac	63.1900	n/a	LCAD	3.5437	difference in LCAD	was parcels 30330, 102081, 102079, 102080, 102076,
31	Precab, Inc	Precab, Inc	102083	1400.0000	OR	M&Bs - 1400 ac	3.0000	n/a	LCAD	3.5437	difference in LCAD	
31	Precab, Inc	Precab, Inc	102083	1400.0000	OR	M&Bs - 1400 ac	3.0000	n/a	LCAD	3.5437	difference in LCAD	
31	Precab, Inc	Precab, Inc	102091	1400.0000	OR	M&Bs - 1400 ac	5.1700	n/a	LCAD	3.5437	difference in LCAD	
31	Precab, Inc	Precab, Inc	102091	1400.0000	OR	M&Bs - 1400 ac	5.1700	n/a	LCAD	3.5437	difference in LCAD	
31	Precab, Inc	Precab, Inc	136674	1400.0000	OR	M&Bs - 1400 ac	22.5500	n/a	LCAD	3.5437	difference in LCAD	
31	Precab, Inc	Precab, Inc	136675	1400.0000	OR	M&Bs - 1400 ac	27.0000	n/a	LCAD	3.5437	difference in LCAD	
31	Precab, Inc	Precab, Inc	136675	1400.0000	OR	M&Bs - 1400 ac	27.0000	n/a	LCAD	3.5437	difference in LCAD	
31	Precab, Inc	Precab, Inc	136675	1400.0000	OR	M&Bs - 1400 ac	27.0000	n/a	LCAD	3.5437	difference in LCAD	
31	Precab, Inc	Precab, Inc	136675	1400.0000	OR	M&Bs - 1400 ac	27.0000	n/a	LCAD	3.5437	difference in LCAD	
31	Precab, Inc	Precab, Inc	136675	1400.0000	OR	M&Bs - 1400 ac	27.0000	n/a	LCAD	3.5437	difference in LCAD	
31	Precab, Inc	Precab, Inc	136675	1400.0000	OR	M&Bs - 1400 ac	27.0000	n/a	LCAD	3.5437	difference in LCAD	
31	Precab, Inc	Precab, Inc	136675	1400.0000	OR	M&Bs - 1400 ac	27.0000	n/a	LCAD	3.5437	difference in LCAD	
31	Precab, Inc	Precab, Inc	136675	1400.0000	OR	M&Bs - 1400 ac	27.0000	n/a	LCAD	3.5437	difference in LCAD	
31	Precab, Inc	Precab, Inc	136676	1400.0000	OR	M&Bs - 1400 ac	25.0000	n/a	LCAD	3.5437	difference in LCAD	was parcel 222566
31	Precab, Inc	Precab, Inc	136678	1400.0000	OR	M&Bs - 1400 ac	79.7600	n/a	LCAD	3.5437	difference in LCAD	LCAD list of properties calls this one 79.76 acres.
31	Precab, Inc	Precab, Inc	136679	1400.0000	OR	M&Bs - 1400 ac	142.0210	n/a	LCAD	3.5437	difference in LCAD	
31	Precab, Inc	Precab, Inc	136679	1400.0000	OR	M&Bs - 1400 ac	142.0210	n/a	LCAD	3.5437	difference in LCAD	
31	Precab, Inc	Precab, Inc	136679	1400.0000	OR	M&Bs - 1400 ac	142.0210	n/a	LCAD	3.5437	difference in LCAD	
31	Precab, Inc	Precab, Inc	136679	1400.0000	OR	M&Bs - 1400 ac	142.0210	n/a	LCAD	3.5437	difference in LCAD	
31	Precab, Inc	Precab, Inc	136679	1400.0000	OR	M&Bs - 1400 ac	142.0210	n/a	LCAD	3.5437	difference in LCAD	
31	Precab, Inc	Precab, Inc	136679	1400.0000	OR	M&Bs - 1400 ac	142.0210	n/a	LCAD	3.5437	difference in LCAD	
31	Precab, Inc	Precab, Inc	136679	1400.0000	OR	M&Bs - 1400 ac	142.0210	n/a	LCAD	3.5437	difference in LCAD	
31	Precab, Inc	Precab, Inc	136679	1400.0000	OR	M&Bs - 1400 ac	142.0210	n/a	LCAD	3.5437	difference in LCAD	
31	Precab, Inc	Precab, Inc	136679	1400.0000	OR	M&Bs - 1400 ac	142.0210	n/a	LCAD	3.5437	difference in LCAD	
31	Precab, Inc	Precab, Inc	136679	1400.0000	OR	M&Bs - 1400 ac	142.0210	n/a	LCAD	3.5437	difference in LCAD	
31	Precab, Inc	Precab, Inc	136679	1400.0000	OR	M&Bs - 1400 ac	142.0210	n/a	LCAD	3.5437	difference in LCAD	
31	Precab, Inc	Precab, Inc	136679	1400.0000	OR	M&Bs - 1400 ac	142.0210	n/a	LCAD	3.5437	difference in LCAD	
31	Precab, Inc	Precab, Inc	153488	1400.0000	OR	M&Bs - 1400 ac	25.0000	n/a	LCAD	3.5437	difference in LCAD	
31	Precab, Inc	Precab, Inc	156193	1400.0000	OR	M&Bs - 1400 ac	1.5157	n/a	LCAD	3.5437	difference in LCAD	
31	Precab, Inc	Precab, Inc	168756	1400.0000	OR	M&Bs - 1400 ac	6.9100	n/a	LCAD	3.5437	difference in LCAD	
31	Precab, Inc	Precab, Inc	200971	1400.0000	OR	M&Bs - 1400 ac	366.9400	n/a	LCAD	3.5437	difference in LCAD	
31	Precab, Inc	Precab, Inc	200971	1400.0000	OR	M&Bs - 1400 ac	366.9400	n/a	LCAD	3.5437	difference in LCAD	
31	Precab, Inc	Precab, Inc	200971	1400.0000	OR	M&Bs - 1400 ac	366.9400	n/a	LCAD	3.5437	difference in LCAD	
31	Precab, Inc	Precab, Inc	201052	1400.0000	OR	M&Bs - 1400 ac	72.6200	n/a	LCAD	3.5437	difference in LCAD	
31	Precab, Inc	Multiple Owners	222565	1400.0000	OR	M&Bs - 1400 ac	5.0000	n/a	LCAD	3.5437	difference in LCAD	assoc with 25340, 25341, 222565
31	Precab, Inc	Multiple Owners	222567	1400.0000	OR	M&Bs - 1400 ac	3.0000	n/a	LCAD	3.5437	difference in LCAD	was 222567-Multiple Owner, 136680-Precab, 102082-Roy Seaber Sr
31	Precab, Inc	Multiple Owners	222568	1400.0000	OR	M&Bs - 1400 ac	10.0000	n/a	LCAD	3.5437	difference in LCAD	was 31653, 102084



PUC Item #	Landowner in Opt-out	Owner's Name Per LCAD, HCAD, or CCAD	Property ID # in LCAD, HCAD, or CCAD	Total Acreage in Request	OR=Original Request NCR=Non-conforming Request	Acreage & Source Provided in Opt-out Request	LCAD,HCAD, or CCAD Acreage per tract	Add'l PUC Item Nos. Assoc.	GIS Source of Acreage	Difference in Acreage Between LCAD, HCAD, or CCAD and Opt-Out Request	Reason for Difference in Acreage	Comments & Notes
32*	Daniel & Lisa Simnacher	Multiple Owners	192934	3747.5190	OR	Tract 1- 3587.519ac M&Bs	3147.3500	33	LCAD	51.5170	difference in LCAD	equal trustees. Strips of land sold to RR. Cannot determine where extra 47.772 acres is coming from on LCAD.
32*	Daniel & Lisa Simnacher	Multiple Owners	192945	3747.5190	OR	Tract 1- 3587.519ac M&Bs	12.7510	33	LCAD	51.5170	difference in LCAD	Previously parcel 146374 & 13.74 ac. Tract 1 sold .989 ac to RR (Parcel #238938). Equal trustees.
32*	Daniel & Lisa Simnacher	Union Pacific Railroad	238938	3747.5190	OR	Tract 1- 3587.519ac M&Bs	0.9890	33	LCAD	51.5170	difference in LCAD	previously part of parcel 192945
32*	Daniel & Lisa Simnacher	Simnacher Lifetime Trust	146375	3747.5190	OR	Tract 1- 3587.519ac M&Bs	4.7200	33	LCAD	51.5170	difference in LCAD	equal trustees. Strips of land sold to RR.
32*	Daniel & Lisa Simnacher	Joey Rollins	228111	3747.5190	OR	Tract 1- 3587.519ac M&Bs	124.5870	33	LCAD	51.5170	difference in LCAD	equal trustees. Strips of land sold to RR.
32*	Daniel & Lisa Simnacher	Union Pacific Railroad	238940	3747.5190	OR	Tract 1- 3587.519ac M&Bs	0.9400	33	LCAD	51.5170	difference in LCAD	previously part of parcel 146375
32*	Daniel & Lisa Simnacher	Multiple Owners	192941	3747.5190	OR	Tract 1- 3587.519ac M&Bs	86.7199	33	LCAD	51.5170	difference in LCAD	equal trustees. (previously parcel 146646). Tract 1-sold .263 ac & 1.173 ac to RR (parcel 238949 & 238950)
32*	Daniel & Lisa Simnacher	Union Pacific Railroad	238949	3747.5190	OR	Tract 1- 3587.519ac M&Bs	0.2630	33	LCAD	51.5170	difference in LCAD	previously part of parcel 192941
32*	Daniel & Lisa Simnacher	Union Pacific Railroad	238950	3747.5190	OR	Tract 1- 3587.519ac M&Bs	1.1731	33	LCAD	51.5170	difference in LCAD	previously part of parcel 192941
32*	Daniel & Lisa Simnacher	Multiple Owners	192939	3747.5190	OR	Tract 1- 3587.519ac M&Bs	87.3961	33	LCAD	51.5170	difference in LCAD	equal trustees (parcel 32098 in LCAD download). Tract 1-sold .67 ac& 1.14 ac to RR (parcels 238946 & 238947)
32*	Daniel & Lisa Simnacher	Multiple Owners	192939	3747.5190	OR	Tract 1- 3587.519ac M&Bs	87.3961	33	LCAD	51.5170	difference in LCAD	equal trustees (parcel 32098 in LCAD download). Tract 1-sold .67 ac& 1.14 ac to RR (parcels 238946 & 238947)
32*	Daniel & Lisa Simnacher	Multiple Owners	192939	3747.5190	OR	Tract 1- 3587.519ac M&Bs	87.3961	33	LCAD	51.5170	difference in LCAD	equal trustees (parcel 32098 in LCAD download). Tract 1-sold .67 ac& 1.14 ac to RR (parcels 238946 & 238947)
32*	Daniel & Lisa Simnacher	Union Pacific Railroad	238947	3747.5190	OR	Tract 1- 3587.519ac M&Bs	1.1420	33	LCAD	51.5170	difference in LCAD	previously part of parcel 32098 / 192939
32*	Daniel & Lisa Simnacher	Union Pacific Railroad	238946	3747.5190	OR	Tract 1- 3587.519ac M&Bs	0.6719	33	LCAD	51.5170	difference in LCAD	previously part of parcel 32098 / 192939
32*	Daniel & Lisa Simnacher	Simnacher Lifetime Trust	192937	3747.5190	OR	Tract 1- 3587.519ac M&Bs	9.7500	33	LCAD	51.5170	difference in LCAD	equal trustees. Sold 4331 ac to RR (parcel 238944)
32*	Daniel & Lisa Simnacher	Union Pacific Railroad	238944	3747.5190	OR	Tract 1- 3587.519ac M&Bs	0.4331	33	LCAD	51.5170	difference in LCAD	previously part of parcel 192937
32*	Daniel & Lisa Simnacher	Multiple Owners	192943	3747.5190	OR	Tract 1- 3587.519ac M&Bs	46.4400	33	LCAD	51.5170	difference in LCAD	equal trustees. Strips of land sold to RR.
32*	Daniel & Lisa Simnacher	Simnacher Lifetime Trust	146306	3747.5190	OR	Tract 1- 3587.519ac M&Bs	113.7100	33	LCAD	51.5170	difference in LCAD	equal trustees. Strips of land sold to RR.
32*	Daniel & Lisa Simnacher	Larry Simnacher	17098	3747.5190	OR	Tract 2-160.00 ac - No M&Bs	160.0000	33	LCAD	51.5170	difference in LCAD	equal trustees. Strips of land sold to RR.
33	Daniel & Lisa Simnacher	Multiple Owners	192934	3747.5190	OR	Tract 1- 3587.519ac M&Bs	3147.3500	32	LCAD	51.5170	difference in LCAD	equal trustees. Strips of land sold to RR. Cannot determine where extra 47.772 acres is coming from on LCAD.
33	Daniel & Lisa Simnacher	Multiple Owners	192945	3747.5190	OR	Tract 1- 3587.519ac M&Bs	12.7510	32	LCAD	51.5170	difference in LCAD	Previously parcel 146374 & 13.74 ac. Tract 1 sold .989 ac to RR (Parcel #238938). Equal trustees.
33	Daniel & Lisa Simnacher	Union Pacific Railroad	238938	3747.5190	OR	Tract 1- 3587.519ac M&Bs	0.9890	32	LCAD	51.5170	difference in LCAD	previously part of parcel 192945
33	Daniel & Lisa Simnacher	Simnacher Lifetime Trust	146375	3747.5190	OR	Tract 1- 3587.519ac M&Bs	124.5870	32	LCAD	51.5170	difference in LCAD	equal trustees. Strips of land sold to RR.
33	Daniel & Lisa Simnacher	Joey Rollins	228111	3747.5190	OR	Tract 1- 3587.519ac M&Bs	4.7200	32	LCAD	51.5170	difference in LCAD	equal trustees. Strips of land sold to RR.
33	Daniel & Lisa Simnacher	Union Pacific Railroad	238940	3747.5190	OR	Tract 1- 3587.519ac M&Bs	0.9400	32	LCAD	51.5170	difference in LCAD	previously part of parcel 146375
33	Daniel & Lisa Simnacher	Multiple Owners	192941	3747.5190	OR	Tract 1- 3587.519ac M&Bs	86.7199	32	LCAD	51.5170	difference in LCAD	equal trustees. (previously parcel 146646). Tract 1-sold .263 ac & 1.173 ac to RR (parcel 238949 & 238950)
33	Daniel & Lisa Simnacher	Union Pacific Railroad	238949	3747.5190	OR	Tract 1- 3587.519ac M&Bs	0.2630	32	LCAD	51.5170	difference in LCAD	previously part of parcel 192941
33	Daniel & Lisa Simnacher	Union Pacific Railroad	238950	3747.5190	OR	Tract 1- 3587.519ac M&Bs	1.1731	32	LCAD	51.5170	difference in LCAD	previously part of parcel 192941
33	Daniel & Lisa Simnacher	Multiple Owners	192939	3747.5190	OR	Tract 1- 3587.519ac M&Bs	87.3961	32	LCAD	51.5170	difference in LCAD	equal trustees (parcel 32098 in LCAD download). Tract 1-sold .67 ac& 1.14 ac to RR (parcels 238946 & 238947)
33	Daniel & Lisa Simnacher	Multiple Owners	192939	3747.5190	OR	Tract 1- 3587.519ac M&Bs	87.3961	32	LCAD	51.5170	difference in LCAD	equal trustees (parcel 32098 in LCAD download). Tract 1-sold .67 ac& 1.14 ac to RR (parcels 238946 & 238947)

PUC Item #	Landowner in Opt-out	Owner's Name Per LCAD, HCAD, or CCAD	Property ID # in LCAD, HCAD, or CCAD	Total Acreage in Request	OR=Original Request NCR=Non-conforming Request	Acreage & Source Provided in Opt-out Request	LCAD, HCAD, or CCAD Acreage per tract	Add'l PUC Item Nos. Assoc.	GIS Source of Acreage	Difference in Acreage Between LCAD, HCAD, or CCAD and Opt-Out Request	Reason for Difference in Acreage	Comments & Notes
33	Daniel & Lisa Simmacher	Multiple Owners	192939	3747.5190	OR	Tract 1- 3587.519ac M&Bs	87.3961	32	LCAD	51.5170	difference in LCAD	equal trustees (parcel 32098 in LCAD download). Tract 1-sold .67 ac& 1.14 ac to RR (parcels 238946 & 238947)
33	Daniel & Lisa Simmacher	Union Pacific Railroad	238947	3747.5190	OR	Tract 1- 3587.519ac M&Bs	1.1420	32	LCAD	51.5170	difference in LCAD	previously part of parcel 32098 / 192939
33	Daniel & Lisa Simmacher	Union Pacific Railroad	238946	3747.5190	OR	Tract 1- 3587.519ac M&Bs	0.6719	32	LCAD	51.5170	difference in LCAD	previously part of parcel 32098 / 192939
33	Daniel & Lisa Simmacher	Simmacher Lifetime Trust	192937	3747.5190	OR	Tract 1- 3587.519ac M&Bs	9.7500	32	LCAD	51.5170	difference in LCAD	equal trustees. Sold .4331 ac to RR (parcel 238944)
33	Daniel & Lisa Simmacher	Union Pacific Railroad	238944	3747.5190	OR	Tract 1- 3587.519ac M&Bs	0.4331	32	LCAD	51.5170	difference in LCAD	previously part of parcel 192937
33	Daniel & Lisa Simmacher	Multiple Owners	192943	3747.5190	OR	Tract 1- 3587.519ac M&Bs	46.4400	32	LCAD	51.5170	difference in LCAD	equal trustees. Strips of land sold to RR.
33	Daniel & Lisa Simmacher	Simmacher Lifetime Trust	146306	3747.5190	OR	Tract 1- 3587.519ac M&Bs	113.7100	32	LCAD	51.5170	difference in LCAD	equal trustees. Strips of land sold to RR.
33	Daniel & Lisa Simmacher	Larry Simmacher	17098	3747.5190	OR	Tract 2-160.00 ac - No M&Bs	160.0000	32	LCAD	51.5170	difference in LCAD	equal trustees. Strips of land sold to RR.
34	Bill Komegacy	Bill Komegacy	30934	100.9600	OR	Map - 100.96 ac	1.7300	n/a	LCAD			Information submittal not readable. But he only has 3 properties under his name in LCAD and they add up to his total request.
34	Bill Komegacy	Bill Komegacy	30925	100.9600	OR	Map - 100.96 ac	2.2300	n/a	LCAD			Information submittal not readable. But he only has 3 properties under his name in LCAD and they add up to his total request.
34	Bill Komegacy	Bill Komegacy	23509	100.9600	OR	Map - 100.96 ac	97.0000	n/a	LCAD			Information submittal not readable. But he only has 3 properties under his name in LCAD and they add up to his total request.
36	Weldon Alders	Weldon W. Alders	20918	9011.6679	OR	Tract 1 M&Bs -215.77 ac	63.7731	n/a	LCAD	62.2049	difference in LCAD	includes a private road of 6.61 acres. Please note that Mr. Alders' GIS consultant [did] not find any conflicts" when reviewing GIS information. Please see attached email.
36	Weldon Alders	Clay and Carrie Bracey	198999	9011.6679	OR	Tract 1 M&Bs -215.77 ac	15.7800	n/a	LCAD	62.2049	difference in LCAD	sold to Clay & Carrie Bracey 9/15/2016/ Please note that Mr. Alders' GIS consultant [did] not find any conflicts" when reviewing GIS information. Please see attached email.
36	Weldon Alders	Charles A. & Amy D. Tolleson III	218064	9011.6679	OR	Tract 1 M&Bs -215.77 ac	15.0000	n/a	LCAD	62.2049	difference in LCAD	sold to Charles A. & Amy D. Tolleson III 8/8/2014/ Please note that Mr. Alders' GIS consultant [did] not find any conflicts" when reviewing GIS information. Please see attached email.
36	Weldon Alders	Charles A. & Amy D. Tolleson III	218064	9011.6679	OR	Tract 1 M&Bs -215.77 ac	15.0000	n/a	LCAD	62.2049	difference in LCAD	sold to Charles A. & Amy D. Tolleson III 8/8/2014/ Please note that Mr. Alders' GIS consultant [did] not find any conflicts" when reviewing GIS information. Please see attached email.
36	Weldon Alders	Charles A. & Amy D. Tolleson III	218064	9011.6679	OR	Tract 1 M&Bs -215.77 ac	15.0000	n/a	LCAD	62.2049	difference in LCAD	sold to Charles A. & Amy D. Tolleson III 8/8/2014/ Please note that Mr. Alders' GIS consultant [did] not find any conflicts" when reviewing GIS information. Please see attached email.
36	Weldon Alders	Thomas Honey Farms, Inc	224958	9011.6679	OR	Tract 1 M&Bs -215.77 ac	20.0000	n/a	LCAD	62.2049	difference in LCAD	Sold to Thomas Honey Farms 4/12/19/ Please note that Mr. Alders' GIS consultant [did] not find any conflicts" when reviewing GIS information. Please see attached email.
36	Weldon Alders	Darrell & Elizabeth Spornhauer	226536	9011.6679	OR	Tract 1 M&Bs -215.77 ac	10.0100	n/a	LCAD	62.2049	difference in LCAD	sold to Spornhauers in 2016/ Please note that Mr. Alders' GIS consultant [did] not find any conflicts" when reviewing GIS information. Please see attached email.

PUC Item #	Landowner in Opt-out	Owner's Name Per LCAD, HCAD, or CCAD	Property ID # in LCAD, HCAD, or CCAD	Total Acreage in Request	OR=Original Request NCR=Non-conforming Request	Acreage & Source Provided in Opt-out Request	LCAD,HCAD, or CCAD Acreage per tract	Addl PUC Item Nos. Assoc.	GIS Source of Acreage	Difference in Acreage Between LCAD, HCAD, or CCAD and Opt-Out Request	Reason for Difference in Acreage	Comments & Notes
36	Weldon Alders	Jimmy M. Flakes & Wilbert J. Gray	228192	9011.6679	OR	Tract 1 M&Bs -215.77 ac	15.0000	n/a	LCAD	62.2049	difference in LCAD	sold to Jimmy M. Flakes & Wilbert J. Gray 4/18/2017. There are 2 parcels with same exact information, but are different shapes, side by side. Think LCAD copied information without updating it/ Please note that Mr. Alders' "GIS consultant [did] not find any conflicts" when reviewing GIS information. Please see attached email.
36	Weldon Alders	Jimmy M. Flakes & Wilbert J. Gray	228192	9011.6679	OR	Tract 1 M&Bs -215.77 ac	15.0000	n/a	LCAD	62.2049	difference in LCAD	sold to Jimmy M. Flakes & Wilbert J. Gray 4/18/2017. There are 2 parcels with same exact information, but are different shapes, side by side. Think LCAD copied information without updating it/ Please note that Mr. Alders' "GIS consultant [did] not find any conflicts" when reviewing GIS information. Please see attached email.
36	Weldon Alders	Michael W. & Adrianna Hennessee	228193	9011.6679	OR	Tract 1 M&Bs -215.77 ac	11.0000	n/a	LCAD	62.2049	difference in LCAD	sold to Michael W. & Adrianna Hennessee 4/18/2017/ Please note that Mr. Alders' "GIS consultant [did] not find any conflicts" when reviewing GIS information. Please see attached email.
36	Weldon Alders	Jose Lopez Moreno	230858	9011.6679	OR	Tract 1 M&Bs -215.77 ac	16.6100	n/a	LCAD	62.2049	difference in LCAD	sold to Jose Moreno 6/20/2017/ Please note that Mr. Alders' "GIS consultant [did] not find any conflicts" when reviewing GIS information. Please see attached email.
36	Weldon Alders	Darrell & Elizabeth Spornhauer	231686	9011.6679	OR	Tract 1 M&Bs -215.77 ac	10.0100	n/a	LCAD	62.2049	difference in LCAD	sold to Pedro Martinez 8/11/2017. Our mapping download doesn't have any information associated with this parcel/ Please note that Mr. Alders' "GIS consultant [did] not find any conflicts" when reviewing GIS information. Please see attached email.
36	Weldon Alders	Juan Carlos Ortega & Daiana Cruz	231687	9011.6679	OR	Tract 1 M&Bs -215.77 ac	10.0100	n/a	LCAD	62.2049	difference in LCAD	sold to Ortega and Cruz 8/11/2017/ Please note that Mr. Alders' "GIS consultant [did] not find any conflicts" when reviewing GIS information. Please see attached email.
36	Weldon Alders	Weldon W. Alders	119714	9011.6679	OR	Tract 2 M&Bs - 9.935 ac	30.7596	n/a	LCAD	62.2049	difference in LCAD	Please note that Mr. Alders' "GIS consultant [did] not find any conflicts" when reviewing GIS information. Please see attached email.
36	Weldon Alders	Charles and Karen Edwards	179299	9011.6679	OR	Tract 2 M&Bs - 9.935 ac	33.2590	n/a	LCAD	62.2049	difference in LCAD	Sold to Charles and Karen Edwards 8/19/2010/ Please note that Mr. Alders' "GIS consultant [did] not find any conflicts" when reviewing GIS information. Please see attached email.
36	Weldon Alders	Charles and Karen Edwards	179299	9011.6679	OR	Tract 2 M&Bs - 9.935 ac	33.2590	n/a	LCAD	62.2049	difference in LCAD	Sold to Charles and Karen Edwards 8/19/2010/ Please note that Mr. Alders' "GIS consultant [did] not find any conflicts" when reviewing GIS information. Please see attached email.
36	Weldon Alders	Weldon W. Alders	184807	9011.6679	OR	Tract 2 M&Bs - 9.935 ac	5.2500	n/a	LCAD	62.2049	difference in LCAD	Supplied M&Bs for overall tract but not for the tracts sold/ Please note that Mr. Alders' "GIS consultant [did] not find any conflicts" when reviewing GIS information. Please see attached email.
36	Weldon Alders	Weldon W. Alders	32496	9011.6679	OR	Tract 3 M&Bs - 100 ac	96.2800	n/a	LCAD	62.2049	difference in LCAD	sold approx. 3.2 acres to RR/ Please note that Mr. Alders' "GIS consultant [did] not find any conflicts" when reviewing GIS information. Please see attached email.
36	Weldon Alders	Weldon W. Alders	111337	9011.6679	OR	Tract 4 M&Bs - 111 ac	3.6900	n/a	LCAD	62.2049	difference in LCAD	Can't match the Tract 4 M&Bs to LCAD. Portions are in subdivisions, cut across other tracts, etc. I've included all tracts in the area/ Please note that Mr. Alders' "GIS consultant [did] not find any conflicts" when reviewing GIS information. Please see attached email.

PUC Item #	Landowner in Opt-out	Owner's Name Per LCAD, HCAD, or CCAD	Property ID # in LCAD, HCAD, or CCAD	Total Acreage in Request	OR=Original Request NCR=Non-conforming Request	Acreage & Source Provided in Opt-out Request	LCAD, HCAD, or CCAD Acreage per tract	Add'l PUC Item Nos. Assoc.	GIS Source of Acreage	Difference in Acreage Between LCAD, HCAD, or CCAD and Opt-Out Request	Reason for Difference in Acreage	Comments & Notes
36	Weldon Alders	Weldon W. Alders	30912	9011.6679	OR	Tract 4 M&Bs - 111 ac	12.2000	n/a	LCAD	62.2049	difference in LCAD	Can't match the Tract 4 M&Bs to LCAD. Portions are in subdivisions, cut across other tracts, etc. I've included all tracts in the area/ Please note that Mr. Alders' "GIS consultant [did] not find any conflicts" when reviewing GIS information. Please see attached email.
36	Weldon Alders	Weldon W. Alders	177277	9011.6679	OR	Tract 4 M&Bs - 111 ac	4.2300	n/a	LCAD	62.2049	difference in LCAD	Can't match the Tract 4 M&Bs to LCAD. Portions are in subdivisions, cut across other tracts, etc. I've included all tracts in the area/ Please note that Mr. Alders' "GIS consultant [did] not find any conflicts" when reviewing GIS information. Please see attached email.
36	Weldon Alders	Weldon W. Alders	14601	9011.6679	OR	Tract 4 M&Bs - 111 ac	121.4900	n/a	LCAD	62.2049	difference in LCAD	Can't match the Tract 4 M&Bs to LCAD. Portions are in subdivisions, cut across this tract. I've included all tracts in the area/ Please note that Mr. Alders' "GIS consultant [did] not find any conflicts" when reviewing GIS information. Please see attached email.
36	Weldon Alders	Weldon W. Alders	31961	9011.6679	OR	Tract 4 M&Bs - 111 ac	15.7300	n/a	LCAD	62.2049	difference in LCAD	Can't match the Tract 4 M&Bs to LCAD. Portions are in subdivisions, cut across other tracts, etc. I've included all tracts in the area/ Please note that Mr. Alders' "GIS consultant [did] not find any conflicts" when reviewing GIS information. Please see attached email.
36	Weldon Alders	Weldon W. Alders	32395	9011.6679	OR	Tract 4 M&Bs - 111 ac	48.8400	n/a	LCAD	62.2049	difference in LCAD	Can't match the Tract 4 M&Bs to LCAD. Portions are in subdivisions, cut across other tracts, etc. I've included all tracts in the area/ Please note that Mr. Alders' "GIS consultant [did] not find any conflicts" when reviewing GIS information. Please see attached email.
36	Weldon Alders	Weldon W. Alders	124488	9011.6679	OR	Tract 5 M&Bs - 80 ac	80.0000	n/a	LCAD	62.2049	difference in LCAD	Please note that Mr. Alders' "GIS consultant [did] not find any conflicts" when reviewing GIS information. Please see attached email.
36	Weldon Alders	Weldon W. Alders	18199	9011.6679	OR	Tract 6 M&Bs - 44.9 ac	44.9900	n/a	LCAD	62.2049	difference in LCAD	Please note that Mr. Alders' "GIS consultant [did] not find any conflicts" when reviewing GIS information. Please see attached email.
36	Weldon Alders	Weldon W. Alders	106257	9011.6679	OR	Tract 7 M&Bs - 634.3025ac	543.3444	n/a	LCAD	62.2049	difference in LCAD	Please note that Mr. Alders' "GIS consultant [did] not find any conflicts" when reviewing GIS information. Please see attached email.
36	Weldon Alders	Weldon W. Alders	136434	9011.6679	OR	Tract 7 M&Bs - 634.3025ac	71.3727	n/a	LCAD	62.2049	difference in LCAD	The user for this tract lists the acreage as 71.7241 and LCAD lists it as 71.3727, making the difference in the total acreage of 0.3514 acres/ Please note that Mr. Alders' "GIS consultant [did] not find any conflicts" when reviewing GIS information. Please see attached email.
36	Weldon Alders	Weldon W. Alders	136717	9011.6679	OR	Tract 7 M&Bs - 634.3025ac	19.2340	n/a	LCAD	62.2049	difference in LCAD	Please note that Mr. Alders' "GIS consultant [did] not find any conflicts" when reviewing GIS information. Please see attached email.
36	Weldon Alders	Weldon W. Alders	123633	9011.6679	OR	Tract 8 M&Bs - 147.0583 ac	65.3500	n/a	LCAD	62.2049	difference in LCAD	Can't reconcile the M&Bs with the map provided by owner, nor the total acreage requested to opt-out/ Please note that Mr. Alders' "GIS consultant [did] not find any conflicts" when reviewing GIS information. Please see attached email.

PUC Item #	Landowner in Opt-out	Owner's Name Per LCAD, HCAD, or CCAD	Property ID # in LCAD, HCAD, or CCAD	Total Acreage in Request	OR=Original Request NCR=Non-conforming Request	Acreage & Source Provided in Opt-out Request	LCAD,HCAD, or CCAD Acreage per tract	Addl PUC Item Nos. Assoc.	GIS Source of Acreage	Difference in Acreage Between LCAD, HCAD, or CCAD and Opt-Out Request	Reason for Difference in Acreage	Comments & Notes
36	Weldon Alders	Multiple Owners	128438	9011.6679	OR	Tract 8 M&Bs - 147.0583 ac	31.3100	n/a	LCAD	62.2049	difference in LCAD	The M&Bs provided for this tract includes the tract south of the RR. This tract is north of the RR and was sold in 1997. The map shows only the tract south of the RR being included, not this one. LCAD shows Multiple owners & sold to James Wierzowiecki/ Please note that Mr. Alders' "GIS consultant [did] not find any conflicts" when reviewing GIS information. Please see attached email.
36	Weldon Alders	Weldon W. Alders	129720	9011.6679	OR	Tract 8 M&Bs - 147.0583 ac	26.4000	n/a	LCAD	62.2049	difference in LCAD	provided by owner, nor the total acreage requested to opt-out/ Please note that Mr.
36	Weldon Alders	Weldon W. Alders	--	9011.6679	OR	Tract 9 M&Bs - 7402.64 ac	7402.6400	n/a	LCAD	62.2049	difference in LCAD	This was all sold to River Ranch Holdings in 2017, and requested opt-outs for 6957.09 ac which should match the acreage for Tract 9 for Alders, but they don't. Reference PUC Item nos. 13,22,24/ Please note that Mr. Alders' "GIS consultant [did] not find any conflicts" when reviewing GIS information. Please see attached email.
36	Weldon Alders	Alvin J. Wierzowiecki	13625	9011.6679	OR	Tract 10 M&Bs - 87 ac.	87.1000	n/a	LCAD	62.2049	difference in LCAD	Please note that Mr. Alders' "GIS consultant [did] not find any conflicts" when reviewing GIS information. Please see attached email.
36	Weldon Alders	Weldon W. Alders	108745	9011.6679	OR	Tract 11 M&Bs - 108.2881 ac.	108.2900	n/a	LCAD	62.2049	difference in LCAD	Please note that Mr. Alders' "GIS consultant [did] not find any conflicts" when reviewing GIS information. Please see attached email.
36	Weldon Alders	Weldon W. Alders	109979	9011.6679	OR	M&Bs Tract 12- 4.074 ac.	5.6100	n/a	LCAD	62.2049	difference in LCAD	Please note that Mr. Alders' "GIS consultant [did] not find any conflicts" when reviewing GIS information. Please see attached email.
36	Weldon Alders	Weldon W. Alders	121717	9011.6679	OR	M&Bs Tract 12- 4.074 ac.	29.3100	n/a	LCAD	62.2049	difference in LCAD	Can't locate property from information given. Included the properties he owns in the area/ Please note that Mr. Alders' "GIS consultant [did] not find any conflicts" when reviewing GIS information. Please see attached email. Please see attached email.
37	Bannister Trusts	MULTIPLE OWNERS	26624	Approx. 204.07	OR	Tract 1 M&Bs - 25 ac	25.0000	n/a	LCAD	0.1700	difference in LCAD	M&Bs map not very readable, but able to locate tracts and verify ownership with LCAD.
37	Bannister Trusts	MULTIPLE OWNERS	15702	Approx. 204.07	OR	Tract 2 M&Bs, map - 80.17 ac	80.0000	n/a	LCAD	0.1700	difference in LCAD	M&Bs map not very readable, but able to locate tracts and verify ownership with LCAD.
37	Bannister Trusts	MULTIPLE OWNERS	31383	Approx. 204.07	OR	Tract 3 M&Bs, map - 98.9 ac	98.9000	n/a	LCAD	0.1700	difference in LCAD	M&Bs map not very readable, but able to locate tracts and verify ownership with LCAD.
39	FPL Farming, Ltd (FPL-2)	FPL Farming LTD	29415	1081.7430	OR	M&Bs - 1081.743 ac	667.2600	28.42	LCAD			FPL Farming made 2 separate and different submittals, 3 times each. This one I labelled FPLF-2.
39	FPL Farming, Ltd (FPL-2)	FPL Farming LTD	29857	1081.7430	OR	M&Bs - 1081.743 ac	241.8800	28.42	LCAD			FPL Farming made 2 separate and different submittals, 3 times each. This one I labelled FPLF-2.
39	FPL Farming, Ltd (FPLF -2)	FPL Farming LTD	29857	1081.7430	OR	M&Bs - 1081.743 ac	241.8800	28.42	LCAD			FPL Farming made 2 separate and different submittals, 3 times each. This one I labelled FPLF-2.
39	FPL Farming, Ltd (FPL-2)	FPL Farming LTD	31607	1081.7430	OR	M&Bs - 1081.743 ac	6.0000	28.42	LCAD			FPL Farming made 2 separate and different submittals, 3 times each. This one I labelled FPLF-2.
39	FPL Farming, Ltd (FPL-2)	FPL Farming LTD	29416	1081.7430	OR	M&Bs - 1081.743 ac	92.6000	28.42	LCAD			FPL Farming made 2 separate and different submittals, 3 times each. This one I labelled FPLF-2.
39	FPL Farming, Ltd (FPL-2)	FPL Farming LTD	28416	1081.7430	OR	M&Bs - 1081.743 ac	38.0000	28.42	LCAD			FPL Farming made 2 separate and different submittals, 3 times each. This one I labelled FPLF-2.
39	FPL Farming, Ltd (FPL-2)	FPL Farming LTD	31816	1081.7430	OR	M&Bs - 1081.743 ac	36.0000	28.42	LCAD			FPL Farming made 2 separate and different submittals, 3 times each. This one I labelled FPLF-2.

PUC Item #	Landowner in Opt-out	Owner's Name Per LCAD, HCAD, or CCAD	Property ID # in LCAD, HCAD, or CCAD	Total Acreage in Request	OR=Original Request NCR=Non-conforming Request	Acreage & Source Provided in Opt-out Request	LCAD,HCAD, or CCAD Acreage per tract	Add'l PUC Item Nos. Assoc.	GIS Source of Acreage	Difference in Acreage Between LCAD, HCAD, or CCAD and Opt-Out Request	Reason for Difference in Acreage	Comments & Notes
40	FVL, Ltd	FVL, Ltd	29417	2163.4860	OR	M&Bs - 2163.486 ac	269.4000	27,45	LCAD	0.046 ac	difference in LCAD,CCAD	Some of this parcel is in Chambers County. See #9241 and #53692 and #61075 and #61076.
40	FVL, Ltd	FVL, Ltd	9241	2163.4860	OR	M&Bs - 2163.486 ac	516.1580	27,45	CCAD	0.046 ac	difference in LCAD,CCAD	This is a portion of #29417 that is in Chambers County.
40	FVL, Ltd	FVL, Ltd	9241	2163.4860	OR	M&Bs - 2163.486 ac	516.1580	27,45	CCAD	0.046 ac	difference in LCAD,CCAD	This is a portion of #29417 that is in Chambers County.
40	FVL, Ltd	FVL, Ltd	61075	2163.4860	OR	M&Bs - 2163.486 ac	16.1660	27,45	CCAD	0.046 ac	difference in LCAD,CCAD	This is a portion of #29417 that is in Chambers County.
40	FVL, Ltd	FVL, Ltd	61076	2163.4860	OR	M&Bs - 2163.486 ac	11.0000	27,45	CCAD	0.046 ac	difference in LCAD,CCAD	This is a portion of #29417 that is in Chambers County.
40	FVL, Ltd	FVL, Ltd	53692	2163.4860	OR	M&Bs - 2163.486 ac	54.6860	27,45	CCAD	0.046 ac	difference in LCAD,CCAD	This is a portion of #29417 that is in Chambers County.
40	FVL, Ltd	FVL, Ltd	53692	2,163.4860	OR	M&Bs - 2163.486 ac	54.6860	27,45	CCAD	0.046 ac	difference in LCAD,CCAD	This is a portion of #29417 that is in Chambers County.
40	FVL, Ltd	FVL, Ltd	29862	2163.4860	OR	M&Bs - 2163.486 ac	94.8100	27,45	LCAD	0.046 ac	difference in LCAD,CCAD	Some of this parcel is in Chambers County. See #9244.
40	FVL, Ltd	Environmental Processing Systems, LC	124646	2163.4860	OR	M&Bs - 2163.486 ac	5.0000	27,45	LCAD	0.046 ac	difference in LCAD,CCAD	Listed as a Purchase Option by FVL?
40	FVL, Ltd	FVL, Ltd	9244	2163.4860	OR	M&Bs - 2163.486 ac	68.5400	27,45	CCAD	0.046 ac	difference in LCAD,CCAD	This is the portion of #29862 that is in Chambers County.
40	FVL, Ltd	FVL, Ltd	28413	2163.4860	OR	M&Bs - 2163.486 ac	580.2400	27,45	LCAD	0.046 ac	difference in LCAD,CCAD	
40	FVL, Ltd	FVL, Ltd	29861	2163.4860	OR	M&Bs - 2163.486 ac	202.9100	27,45	LCAD	0.046 ac	difference in LCAD,CCAD	
40	FVL, Ltd	FVL, Ltd	31810	2163.4860	OR	M&Bs - 2163.486 ac	210.1200	27,45	LCAD	0.046 ac	difference in LCAD,CCAD	
40	FVL, Ltd	FVL, Ltd	31813	2163.4860	OR	M&Bs - 2163.486 ac	46.0000	27,45	LCAD	0.046 ac	difference in LCAD,CCAD	
40	FVL, Ltd	FVL, Ltd	31155	2163.4860	OR	M&Bs - 2163.486 ac	55.4500	27,45	LCAD	0.046 ac	difference in LCAD,CCAD	Some of this parcel is in Chambers County. See #5540.
40	FVL, Ltd	FVL, Ltd	31155	2163.4860	OR	M&Bs - 2163.486 ac	55.4500	27,45	LCAD	0.046 ac	difference in LCAD,CCAD	Some of this parcel is in Chambers County. See #5540.
40	FVL, Ltd	FVL, Ltd	31155	2163.4860	OR	M&Bs - 2163.486 ac	55.4500	27,45	LCAD	0.046 ac	difference in LCAD,CCAD	Some of this parcel is in Chambers County. See #5540.
40	FVL, Ltd	FVL, Ltd	5540	2163.4860	OR	M&Bs - 2163.486 ac	33.0520	27,45	CCAD	0.046 ac	difference in LCAD,CCAD	This is the portion of #31155 that is in Chambers County.
42	FPL Farming, Ltd (FPLF -2)	FPL Farming LTD	29415	1081.7430	OR	M&Bs - 1081.743 ac	667.2600	28,39	LCAD			FPL Farming made 2 separate and different submittals, 3 times each. This one I labelled FPLF-2.
42	FPL Farming, Ltd (FPLF -2)	FPL Farming LTD	29857	1081.7430	OR	M&Bs - 1081.743 ac	241.8800	28,39	LCAD			FPL Farming made 2 separate and different submittals, 3 times each. This one I labelled FPLF-2.
42	FPL Farming, Ltd (FPLF -2)	FPL Farming LTD	29857	1081.7430	OR	M&Bs - 1081.743 ac	241.8800	28,39	LCAD			FPL Farming made 2 separate and different submittals, 3 times each. This one I labelled FPLF-2.
42	FPL Farming, Ltd (FPLF -2)	FPL Farming LTD	31607	1081.7430	OR	M&Bs - 1081.743 ac	6.0000	28,39	LCAD			FPL Farming made 2 separate and different submittals, 3 times each. This one I labelled FPLF-2.
42	FPL Farming, Ltd (FPLF -2)	FPL Farming LTD	29416	1081.7430	OR	M&Bs - 1081.743 ac	92.6000	28,39	LCAD			FPL Farming made 2 separate and different submittals, 3 times each. This one I labelled FPLF-2.
42	FPL Farming, Ltd (FPLF -2)	FPL Farming LTD	28416	1081.7430	OR	M&Bs - 1081.743 ac	38.0000	28,39	LCAD			FPL Farming made 2 separate and different submittals, 3 times each. This one I labelled FPLF-2.
42	FPL Farming, Ltd (FPLF -2)	FPL Farming LTD	31816	1081.7430	OR	M&Bs - 1081.743 ac	36.0000	28,39	LCAD			FPL Farming made 2 separate and different submittals, 3 times each. This one I labelled FPLF-2.
44	FPL Farming, Ltd	FPL Farming, Ltd	16030	1140.6400	OR	M&Bs - 1140.64 ac	766.6040	29,51	LCAD	4.5469	Difference in LCAD/HCAD	Some of this tract is in Harris County. See #402830000113 & #402830000056.
44	FPL Farming, Ltd	FPL Farming, Ltd	402830000113	1140.6400	OR	M&Bs - 1140.64 ac	6.7330	29,51	HCAD	4.5469	Difference in LCAD/HCAD	This is a portion of #16030 that is in Harris County.
44	FPL Farming, Ltd	FPL Farming, Ltd	402830000056	1140.6400	OR	M&Bs - 1140.64 ac	17.0529	29,51	HCAD	4.5469	Difference in LCAD/HCAD	This is a portion of #16030 that is in Harris County.
44	FPL Farming, Ltd	FPL Farming, Ltd	124615	1140.6400	OR	M&Bs - 1140.64 ac	155.8980	29,51	LCAD	4.5469	Difference in LCAD/HCAD	Not sure where the extra 4+ acres comes from
44	FPL Farming, Ltd	FPL Farming, Ltd	16029	1140.6400	OR	M&Bs - 1140.64 ac	26.6012	29,51	LCAD	4.5469	Difference in LCAD/HCAD	
44	FPL Farming, Ltd	FPL Farming, Ltd	214085	1140.6400	OR	M&Bs - 1140.64 ac	159.7270	29,51	LCAD	4.5469	Difference in LCAD/HCAD	Some of this tract is in Harris County. See #402830000115 & #402830000114.
44	FPL Farming, Ltd	FPL Farming, Ltd	402830000115	1140.6400	OR	M&Bs - 1140.64 ac	0.8600	29,51	HCAD	4.5469	Difference in LCAD/HCAD	This is a portion of #214085 that is in Harris County.
44	FPL Farming, Ltd	FPL Farming, Ltd	402830000114	1140.6400	OR	M&Bs - 1140.64 ac	2.6170	29,51	HCAD	4.5469	Difference in LCAD/HCAD	This is a portion of #214085 that is in Harris County.

PUC Item #	Landowner in Opt-out	Owner's Name Per LCAD, HCAD, or CCAD	Property ID # in LCAD, HCAD, or CCAD	Total Acreage in Request	OR=Original Request NCR=Non-conforming Request	Acreage & Source Provided in Opt-out Request	LCAD,HCAD, or CCAD Acreage per tract	Addl PUC Item Nos. Assoc.	GIS Source of Acreage	Difference in Acreage Between LCAD, HCAD, or CCAD and Opt-Out Request	Reason for Difference in Acreage	Comments & Notes
45	FVL, Ltd	FVL, Ltd	29417	2163.4860	OR	M&Bs - 2163.486 ac	269.4000	27.40	LCAD	0.0460	difference in LCAD, CCAD	Some of this parcel is in Chambers County. See #9241 and #53692 and #61075 and #61076.
45	FVL, Ltd	FVL, Ltd	9241	2163.4860	OR	M&Bs - 2163.486 ac	516.1580	27.40	CCAD	0.0460	difference in LCAD, CCAD	This is a portion of #29417 that is in Chambers County.
45	FVL, Ltd	FVL, Ltd	9241	2163.4860	OR	M&Bs - 2163.486 ac	516.1580	27.40	CCAD	0.046 ac	difference in LCAD,CCAD	This is a portion of #29417 that is in Chambers County.
45	FVL, Ltd	FVL, Ltd	61075	2163.4860	OR	M&Bs - 2163.486 ac	16.1660	27.40	CCAD	0.0460	difference in LCAD, CCAD	This is a portion of #29417 that is in Chambers County.
45	FVL, Ltd	FVL, Ltd	61076	2163.4860	OR	M&Bs - 2163.486 ac	11.0000	27.40	CCAD	0.0460	difference in LCAD, CCAD	This is a portion of #29417 that is in Chambers County.
45	FVL, Ltd	FVL, Ltd	53692	2163.4860	OR	M&Bs - 2163.486 ac	54.6860	27.40	CCAD	0.0460	difference in LCAD, CCAD	This is a portion of #29417 that is in Chambers County.
45	FVL, Ltd	FVL, Ltd	53692	2163.4860	OR	M&Bs - 2163.486 ac	54.69	27.40	CCAD	0.046 ac	difference in LCAD,CCAD	This is a portion of #29417 that is in Chambers County.
45	FVL, Ltd	FVL, Ltd	29862	2163.4860	OR	M&Bs - 2163.486 ac	94.8100	27.40	LCAD	0.0460	difference in LCAD, CCAD	Some of this parcel is in Chambers County. See #9244.
45	FVL, Ltd	Environmental Processing Systems, LC	124646	2163.4860	OR	M&Bs - 2163.486 ac	5.0000	27.40	LCAD	0.0460	difference in LCAD, CCAD	Listed as a Purchase Option by FVL? This is the portion of #29862 that is in Chambers County.
45	FVL, Ltd	FVL, Ltd	9244	2163.4860	OR	M&Bs - 2163.486 ac	68.5400	27.40	CCAD	0.0460	difference in LCAD, CCAD	
45	FVL, Ltd	FVL, Ltd	28413	2163.4860	OR	M&Bs - 2163.486 ac	580.2400	27.40	LCAD	0.0460	difference in LCAD, CCAD	
45	FVL, Ltd	FVL, Ltd	29861	2163.4860	OR	M&Bs - 2163.486 ac	202.9100	27.40	LCAD	0.0460	difference in LCAD, CCAD	
45	FVL, Ltd	FVL, Ltd	31810	2163.4860	OR	M&Bs - 2163.486 ac	210.1200	27.40	LCAD	0.0460	difference in LCAD, CCAD	
45	FVL, Ltd	FVL, Ltd	31813	2163.4860	OR	M&Bs - 2163.486 ac	46.0000	27.40	LCAD	0.0460	difference in LCAD, CCAD	
45	FVL, Ltd	FVL, Ltd	31155	2163.4860	OR	M&Bs - 2163.486 ac	55.4500	27.40	LCAD	0.0460	difference in LCAD, CCAD	Some of this parcel is in Chambers County. See #5540.
45	FVL, Ltd	FVL, Ltd	31155	2163.4860	OR	M&Bs - 2163.486 ac	55.4500	27.40	LCAD	0.046 ac	difference in LCAD,CCAD	Some of this parcel is in Chambers County. See #5540.
45	FVL, Ltd	FVL, Ltd	31155	2163.4860	OR	M&Bs - 2163.486 ac	55.4500	27.40	LCAD	0.046 ac	difference in LCAD,CCAD	Some of this parcel is in Chambers County. See #5540.
45	FVL, Ltd	FVL, Ltd	5540	2163.4860	OR	M&Bs - 2163.486 ac	33.0520	27.40	CCAD	0.0460	difference in LCAD, CCAD	This is the portion of #31155 that is in Chambers County.
47	Keith & Connie Fitzhenry	Keith and Connie Fitzhenry	228525	35.0000	OR	M&Bs - 35.0 ac	35.0000	n/a	LCAD			
47	Keith & Connie Fitzhenry	Kristina P. Malatinski	231909	50.4500	OR	M&Bs - 50.45 ac	10.0020	n/a	LCAD	40.4480	LCAD information wrong	This property/parcel is wrong in LCAD. The Fitzhenry's sold land in 2017 to Kristina Malatinski (10.002 ac) & the same information associated with the her land is also associated with the 50.45 acres the Fitzhenry's own.
48	Cedar Bayou Wildlife, LLC	Multiple Owners	245208	1140.7700	OR	Tract 1 M&Bs - 611.88 ac	288.6100	n/a	LCAD	6.3300	difference in LCAD	Assoc. with parcels 193173, 245209
48	Cedar Bayou Wildlife, LLC	Multiple Owners	245208	1140.7700	OR	Tract 1 M&Bs - 611.88 ac	288.6100	n/a	LCAD	6.3300	difference in LCAD	Assoc. with parcels 193173, 245209
48	Cedar Bayou Wildlife, LLC	Multiple Owners	193176	1140.7700	OR	Tract 1 M&Bs - 611.88 ac	253.9900	n/a	LCAD	6.3300	difference in LCAD	
48	Cedar Bayou Wildlife, LLC	Coastal Water Authority	193424	1140.7700	OR	Tract 1 M&Bs - 611.88 ac	24.9400	n/a	LCAD	6.3300	difference in LCAD	
48	Cedar Bayou Wildlife, LLC	Coastal Water Authority	193423	1140.7700	OR	Tract 1 M&Bs - 611.88 ac	44.3400	n/a	LCAD	6.3300	difference in LCAD	
48	Cedar Bayou Wildlife, LLC	Cedar Bayou Wildlife, Inc.	193174	1140.7700	OR	Tract 2 M&Bs - 519.20 ac	36.2000	n/a	LCAD	6.3300	difference in LCAD	
48	Cedar Bayou Wildlife, LLC	Cedar Bayou Wildlife, Inc.	193174	1140.7700	OR	Tract 2 M&Bs - 519.20 ac	36.2000	n/a	LCAD	6.3300	difference in LCAD	
48	Cedar Bayou Wildlife, LLC	Cedar Bayou Wildlife, Inc.	193174	1140.7700	OR	Tract 2 M&Bs - 519.20 ac	36.2000	n/a	LCAD	6.3300	difference in LCAD	
48	Cedar Bayou Wildlife, LLC	Cedar Bayou Wildlife, Inc.	193175	1140.7700	OR	Tract 2 M&Bs - 519.20 ac	29.0700	n/a	LCAD	6.3300	difference in LCAD	
48	Cedar Bayou Wildlife, LLC	Cedar Bayou Wildlife, Inc.	193179	1140.7700	OR	Tract 2 M&Bs - 519.20 ac	75.4300	n/a	LCAD	6.3300	difference in LCAD	
48	Cedar Bayou Wildlife, LLC	Cedar Bayou Wildlife, Inc.	193181	1140.7700	OR	Tract 2 M&Bs - 519.20 ac	143.3000	n/a	LCAD	6.3300	difference in LCAD	
48	Cedar Bayou Wildlife, LLC	Cedar Bayou Wildlife, Inc.	29901	1140.7700	OR	Tract 2 M&Bs - 519.20 ac	235.2000	n/a	LCAD	6.3300	difference in LCAD	No Tract 3 listed in request.
48	Cedar Bayou Wildlife, LLC	Cedar Bayou Wildlife, Inc.	29901	1140.7700	OR	Tract 2 M&Bs - 519.20 ac	235.2000	n/a	LCAD	6.3300	difference in LCAD	No Tract 3 listed in request.
48	Cedar Bayou Wildlife, LLC	Cedar Bayou Wildlife, Inc.	29901	1140.7700	OR	Tract 2 M&Bs - 519.20 ac	235.2000	n/a	LCAD	6.3300	difference in LCAD	No Tract 3 listed in request.
48	Cedar Bayou Wildlife, LLC	Cedar Bayou Wildlife, Inc.	29901	1140.7700	OR	Tract 2 M&Bs - 519.20 ac	235.2000	n/a	LCAD	6.3300	difference in LCAD	No Tract 3 listed in request.

PUC Item #	Landowner in Opt-out	Owner's Name Per LCAD, HCAD, or CCAD	Property ID # in LCAD, HCAD, or CCAD	Total Acreage In Request	OR=Original Request NCR=Non-conforming Request	Acreage & Source Provided in Opt-out Request	LCAD, HCAD, or CCAD Acreage per tract	Add'l PUC Item Nos. Assoc.	GIS Source of Acreage	Difference in Acreage Between LCAD, HCAD, or CCAD and Opt-Out Request	Reason for Difference in Acreage	Comments & Notes
48	Cedar Bayou Wildlife, LLC	Tummala Venkata Siva Rama K	218089	497.8590	OR	Tract 4 M&Bs - 9.69 ac	3.3600	n/a	LCAD	6.3300	difference in LCAD	This is the tract that's off in LCAD ac
49	W.M Moreau Estate	W.M. Moreau	25190	193.7965	OR	CAD map - 193.7965 ac	193.7965	127	LCAD			
49	W.M Moreau Estate	W.M. Moreau	25190	193.7965	OR	CAD map - 193.7965 ac	193.7965	127	LCAD			
50	William D. Gay, II	William D. Gay, II	13182	Approx. 108	OR	M&Bs - 106.2904 ac	106.2904	n/a	LCAD			
50	William D. Gay, II	William D. Gay, II	13190	Approx. 108	OR	M&Bs - 106.2904 ac	1.7048	n/a	LCAD			
51	FPL Farming, Ltd	FPL Farming, Ltd	16030	1140.6400	OR	M&Bs - 1140.64 ac	766.6040	29.44	LCAD	4.5469	Difference in LCAD/HCAD	Some of this tract is in Harris County. See #402830000113 & #402830000056.
51	FPL Farming, Ltd	FPL Farming, Ltd	402830000113	1140.6400	OR	M&Bs - 1140.64 ac	6.7330	29.44	HCAD	4.5469	Difference in LCAD/HCAD	This is a portion of #16030 that is in Harris County.
51	FPL Farming, Ltd	FPL Farming, Ltd	402830000056	1140.6400	OR	M&Bs - 1140.64 ac	17.0529	29.44	HCAD	4.5469	Difference in LCAD/HCAD	This is a portion of #16030 that is in Harris County.
51	FPL Farming, Ltd	FPL Farming, Ltd	124615	1140.6400	OR	M&Bs - 1140.64 ac	155.8980	29.44	LCAD	4.5469	Difference in LCAD/HCAD	Not sure where the extra 4+ acres comes from
51	FPL Farming, Ltd	FPL Farming, Ltd	16029	1140.6400	OR	M&Bs - 1140.64 ac	26.6012	29.44	LCAD	4.5469	Difference in LCAD/HCAD	
51	FPL Farming, Ltd	FPL Farming, Ltd	214085	1140.6400	OR	M&Bs - 1140.64 ac	159.7270	29.44	LCAD	4.5469	Difference in LCAD/HCAD	Some of this tract is in Harris County. See #402830000115 & #402830000114.
51	FPL Farming, Ltd	FPL Farming, Ltd	402830000115	1140.6400	OR	M&Bs - 1140.64 ac	0.8600	29.44	HCAD	4.5469	Difference in LCAD/HCAD	This is a portion of #214085 that is in Harris County.
51	FPL Farming, Ltd	FPL Farming, Ltd	402830000114	1140.6400	OR	M&Bs - 1140.64 ac	2.6170	29.44	HCAD	4.5469	Difference in LCAD/HCAD	This is a portion of #214085 that is in Harris County.
52	John M. Barte	John M. Barte	108671	26.4450	OR	M&Bs - 26.445 ac	26.4475	n/a	LCAD			
53	Eagle Heights Fellowship	Memorial Baptist Church	148262	144.5664	OR	M&Bs 154.5764 ac	20.0100	n/a	LCAD			
53	Eagle Heights Fellowship	Memorial Baptist Church	115560	144.5664	OR	M&Bs 154.5764 ac	134.5664	n/a	LCAD			
55	Bill Daniel Trust et al	Bill Daniel Trust et al	58615	166.6200	OR	LCAD Map w/Property ID# - 101.04 ac	101.0400	n/a	LCAD			
55	Bill Daniel Trust et al	Bill Daniel Trust et al	143735	166.6200	OR	LCAD Map w/Property ID# - 101.04 ac	65.5800	n/a	LCAD			
55	Daniel Martin Parker	Daniel Martin Parker	46667	171.4844	OR	LCAD Map with Property ID# - 11 ac	11.0000	n/a	LCAD			
55	Daniel Martin Parker	Daniel Martin Parker	46668	171.4844	OR	LCAD Map with Property ID# - 1 ac	1.0000	n/a	LCAD			
55	Daniel Martin Parker	Daniel Martin Parker	46670	171.4844	OR	LCAD Map with Property ID# - 12 ac	12.0000	n/a	LCAD			
55	Daniel Martin Parker	Daniel Martin Parker	46671	171.4844	OR	LCAD Map with Property ID# - 12 ac	12.0000	n/a	LCAD			
55	Daniel Martin Parker	Daniel Martin Parker	46731	171.4844	OR	LCAD Map with Property ID# - 12 ac	12.0000	n/a	LCAD			
55	Daniel Martin Parker	Daniel Martin Parker	46736	171.4844	OR	LCAD Map with Property ID# - 9.03 ac	9.0300	n/a	LCAD			
55	Daniel Martin Parker	Daniel Martin Parker	46737	171.4844	OR	LCAD Map with Property ID# - 7.5 ac	7.5000	n/a	LCAD			
55	Daniel Martin Parker	Daniel Martin Parker	136081	171.4844	OR	LCAD Map with Property ID# - 4.5 ac	4.5000	n/a	LCAD			
55	Daniel Martin Parker	Daniel Martin Parker	146371	171.4844	OR	LCAD Map with Property ID# - 73.6476 ac	73.6476	n/a	LCAD			
55	Daniel Martin Parker	Daniel Martin Parker	146372	171.4844	OR	LCAD Map with Property ID# - 11.5912 ac	11.5912	n/a	LCAD			
55	Daniel Martin Parker	Daniel Martin Parker	146373	171.4844	OR	LCAD Map with Property ID# - 17.2156 ac	17.2156	n/a	LCAD			
55	Susan Nanette Daniel	Susan Nanette Daniel	28032	574.3619	OR	LCAD Map with Property ID# - 145 ac	145.0000	n/a	LCAD			
55	Susan Nanette Daniel	Susan Nanette Daniel	28034	574.3619	OR	LCAD Map with Property ID# - 79.04 ac	79.0400	n/a	LCAD			
55	Susan Nanette Daniel	Susan Nanette Daniel	28038	574.3619	OR	LCAD Map with Property ID# - 46 ac	46.0000	n/a	LCAD			
55	Susan Nanette Daniel	Multiple Owners	28068	574.3619	OR	LCAD Map with Property ID# - 151.019 ac	151.0190	n/a	LCAD			



PUC Item #	Landowner in Opt-out	Owner's Name Per LCAD, HCAD, or CCAD	Property ID # in LCAD, HCAD, or CCAD	Total Acreage in Request	OR=Original Request NCR=Non-conforming Request	Acreage & Source Provided in Opt-out Request	LCAD,HCAD, or CCAD Acreage per tract	Add'l PUC Item Nos. Assoc.	GIS Source of Acreage	Difference in Acreage Between LCAD, HCAD, or CCAD and Opt-Out Request	Reason for Difference in Acreage	Comments & Notes
55	Susan Nanette Daniel	Susan Nanette Daniel	46672	574.3619	OR	LCAD Map with Property ID# - 29.1029 ac	29.1029	n/a	LCAD			
55	Susan Nanette Daniel	Susan Nanette Daniel	46672	574.3619	OR	LCAD Map with Property ID# - 29.1029 ac	29.1029	n/a	LCAD			
55	Susan Nanette Daniel	Susan Nanette Daniel	46676	574.3619	OR	LCAD Map with Property ID# - 4 ac	4.0000	n/a	LCAD			
55	Susan Nanette Daniel	Susan Nanette Daniel	46676	574.3619	OR	LCAD Map with Property ID# - 4 ac	4.0000	n/a	LCAD			
55	Susan Nanette Daniel	Susan Nanette Daniel	46676	574.3619	OR	LCAD Map with Property ID# - 4 ac	4.0000	n/a	LCAD			
55	Susan Nanette Daniel	Susan Nanette Daniel	69809	574.3619	OR	LCAD Map with Property ID# - 70.0 ac	70.0000	n/a	LCAD			
55	Susan Nanette Daniel	Susan Nanette Daniel	69810	574.3619	OR	LCAD Map with Property ID# - 10 ac	10.0000	n/a	LCAD			
55	Susan Nanette Daniel	Susan Nanette Daniel	69814	574.3619	OR	LCAD Map with Property ID# - 40.2 ac	40.2000	n/a	LCAD			
56	Guadalupe and Norma Hernandez	Guadalupe C & Norma Hernandez	167701	34.0000	OR	M&Bs, Map - 34.0 ac	34.0000	n/a	LCAD			
57	Randal and Pamela Klimitchek	Randal & Pamela Klimitchek	118513	29.4600	OR	M&Bs, Map, LCAD Property ID - 29.46 ac	29.4600	n/a	LCAD			
121	Mary Gay Corporation	Mary Gay Corporation	20880	695.9800	NCR	M&Bs & Plat - 695.98 ac	1427.5600	26	LCAD	731.5800	LCAD not updated with new tract information	The Mary Gay Corporation only asked for 695.98 ac on the west side of FM 1409 to be in the opt-out, and provided a new deed showing only the tract requested April 14, 2020.
121	Mary Gay Corporation	Mary Gay Corporation	20880	695.9800	NCR	M&Bs & Plat - 695.98 ac	1427.5600	26	LCAD	731.5800	LCAD not updated with new tract information	The Mary Gay Corporation only asked for 695.98 ac on the west side of FM 1409 to be in the opt-out, and provided a new deed showing only the tract requested April 14, 2020.
122	Stoesser Farms	Liberty Grand Partners LLC	26622	2627.7000	NCR	Tract 1 M&Bs and plat - 2414.5 ac	390.2600	11	LCAD	65.7190	All tracts from plat accounted for. Information differs between LCAD and that provided. Total ac in Request was 1 ac more than actual total.	
122	Stoesser Farms	Liberty Grand Partners LLC	26622	2627.7000	NCR	Tract 1 M&Bs and plat - 2414.5 ac	390.2600	11	LCAD	65.7190	All tracts from plat accounted for. Information differs between LCAD and that provided. Total ac in Request was 1 ac more than actual total.	
122	Stoesser Farms	Liberty Grand Partners LLC	26622	2627.7000	NCR	Tract 1 M&Bs and plat - 2414.5 ac	390.2600	11	LCAD	65.7190	All tracts from plat accounted for. Information differs between LCAD and that provided. Total ac in Request was 1 ac more than actual total.	
122	Stoesser Farms	Liberty Grand Partners LLC	26622	2627.7000	NCR	Tract 1 M&Bs and plat - 2414.5 ac	390.2600	11	LCAD	65.7190	All tracts from plat accounted for. Information differs between LCAD and that provided. Total ac in Request was 1 ac more than actual total.	
122	Stoesser Farms	Liberty Grand Partners LLC	26622	2627.7000	NCR	Tract 1 M&Bs and plat - 2414.5 ac	390.2600	11	LCAD	65.7190	All tracts from plat accounted for. Information differs between LCAD and that provided. Total ac in Request was 1 ac more than actual total.	
122	Stoesser Farms	Liberty Grand Partners LLC	26622	2627.7000	NCR	Tract 1 M&Bs and plat - 2414.5 ac	390.2600	11	LCAD	65.7190	All tracts from plat accounted for. Information differs between LCAD and that provided. Total ac in Request was 1 ac more than actual total.	
122	Stoesser Farms	Liberty Grand Partners LLC	26622	2627.7000	NCR	Tract 1 M&Bs and plat - 2414.5 ac	390.2600	11	LCAD	65.7190	All tracts from plat accounted for. Information differs between LCAD and that provided. Total ac in Request was 1 ac more than actual total.	
122	Stoesser Farms	Liberty Grand Partners LLC	26622	2627.7000	NCR	Tract 1 M&Bs and plat - 2414.5 ac	390.2600	11	LCAD	65.7190	All tracts from plat accounted for. Information differs between LCAD and that provided. Total ac in Request was 1 ac more than actual total.	

PUC Item #	Landowner in Opt-out	Owner's Name Per LCAD, HCAD, or CCAD	Property ID # in LCAD, HCAD, or CCAD	Total Acreage in Request	OR=Original Request NCR=Non-conforming Request	Acreage & Source Provided in Opt-out Request	LCAD,HCAD, or CCAD Acreage per tract	Add'l PUC Item Nos. Assoc.	GIS Source of Acreage	Difference in Acreage Between LCAD, HCAD, or CCAD and Opt-Out Request	Reason for Difference in Acreage	Comments & Notes
122	Stoesser Farms	Liberty Grand Partners LLC	26622	2627.7000	NCR	Tract 1 M&Bs and plat - 2414.5 ac	390.2600	11	LCAD	65.7190	All tracts from plat accounted for. Information differs between LCAD and that provided. Total ac in Request was 1 ac more than actual total.	
122	Stoesser Farms	Liberty Grand Partners LLC	26622	2627.7000	NCR	Tract 1 M&Bs and plat - 2414.5 ac	390.2600	11	LCAD	65.7190	All tracts from plat accounted for. Information differs between LCAD and that provided. Total ac in Request was 1 ac more than actual total.	
122	Stoesser Farms	Liberty Grand Partners LLC	26622	2627.7000	NCR	Tract 1 M&Bs and plat - 2414.5 ac	390.2600	11	LCAD	65.7190	All tracts from plat accounted for. Information differs between LCAD and that provided. Total ac in Request was 1 ac more than actual total.	
122	Stoesser Farms	Liberty Grand Partners LLC	26627	2627.7000	NCR	Tract 1 M&Bs and plat - 2414.5 ac	20.0000	11	LCAD	65.7190	All tracts from plat accounted for. Information differs between LCAD and that provided. Total ac in Request was 1 ac more than actual total.	
122	Stoesser Farms	Multiple Owners	245210	2627.7000	NCR	Tract 1 M&Bs and plat - 2414.5 ac	253.9900	11	LCAD	65.7190	All tracts from plat accounted for. Information differs between LCAD and that provided. Total ac in Request was 1 ac more than actual total.	
122	Stoesser Farms	Liberty Grand Partners LLC	27617	2627.7000	NCR	Tract 1 M&Bs and plat - 2414.5 ac	226.9900	11	LCAD	65.7190	All tracts from plat accounted for. Information differs between LCAD and that provided. Total ac in Request was 1 ac more than actual total.	
122	Stoesser Farms	Liberty Grand Partners LLC	27617	2627.7000	NCR	Tract 1 M&Bs and plat - 2414.5 ac	226.9900	11	LCAD	65.7190	All tracts from plat accounted for. Information differs between LCAD and that provided. Total ac in Request was 1 ac more than actual total.	
122	Stoesser Farms	Liberty Grand Partners LLC	27617	2627.7000	NCR	Tract 1 M&Bs and plat - 2414.5 ac	226.9900	11	LCAD	65.7190	All tracts from plat accounted for. Information differs between LCAD and that provided. Total ac in Request was 1 ac more than actual total.	
122	Stoesser Farms	Liberty Grand Partners LLC	27617	2627.7000	NCR	Tract 1 M&Bs and plat - 2414.5 ac	226.9900	11	LCAD	65.7190	All tracts from plat accounted for. Information differs between LCAD and that provided. Total ac in Request was 1 ac more than actual total.	
122	Stoesser Farms	Liberty Grand Partners LLC	27617	2627.7000	NCR	Tract 1 M&Bs and plat - 2414.5 ac	226.9900	11	LCAD	65.7190	All tracts from plat accounted for. Information differs between LCAD and that provided. Total ac in Request was 1 ac more than actual total.	
122	Stoesser Farms	Liberty Grand Partners LLC	27617	2627.7000	NCR	Tract 1 M&Bs and plat - 2414.5 ac	226.9900	11	LCAD	65.7190	All tracts from plat accounted for. Information differs between LCAD and that provided. Total ac in Request was 1 ac more than actual total.	
122	Stoesser Farms	Liberty Grand Partners LLC	27618	2627.7000	NCR	Tract 1 M&Bs and plat - 2414.5 ac	10.6700	11	LCAD	65.7190	All tracts from plat accounted for. Information differs between LCAD and that provided. Total ac in Request was 1 ac more than actual total.	
122	Stoesser Farms	Liberty Grand Partners LLC	29897	2627.7000	NCR	Tract 1 M&Bs and plat - 2414.5 ac	161.9500	11	LCAD	65.7190	All tracts from plat accounted for. Information differs between LCAD and that provided. Total ac in Request was 1 ac more than actual total.	
122	Stoesser Farms	Liberty Grand Partners LLC	29897	2627.7000	NCR	Tract 1 M&Bs and plat - 2414.5 ac	161.9500	11	LCAD	65.7190	All tracts from plat accounted for. Information differs between LCAD and that provided. Total ac in Request was 1 ac more than actual total.	
122	Stoesser Farms	Liberty Grand Partners LLC	31028	2627.7000	NCR	Tract 1 M&Bs and plat - 2414.5 ac	62.7500	11	LCAD	65.7190	All tracts from plat accounted for. Information differs between LCAD and that provided. Total ac in Request was 1 ac more than actual total.	This tract is odd. Looks like a tiny little sliver but says it's 275 ac. Would explain most of the difference in acres between M&Bs and plat and LCAD if it's the problem.
122	Stoesser Farms	Liberty Grand Partners LLC	31028	2627.7000	NCR	Tract 1 M&Bs and plat - 2414.5 ac	62.7500	11	LCAD	65.7190	All tracts from plat accounted for. Information differs between LCAD and that provided. Total ac in Request was 1 ac more than actual total.	This tract is odd. Looks like a tiny little sliver but says it's 275 ac. Would explain most of the difference in acres between M&Bs and plat and LCAD if it's the problem.
122	Stoesser Farms	Liberty Grand Partners LLC	31028	2627.7000	NCR	Tract 1 M&Bs and plat - 2414.5 ac	62.7500	11	LCAD	65.7190	All tracts from plat accounted for. Information differs between LCAD and that provided. Total ac in Request was 1 ac more than actual total.	This tract is odd. Looks like a tiny little sliver but says it's 275 ac. Would explain most of the difference in acres between M&Bs and plat and LCAD if it's the problem.

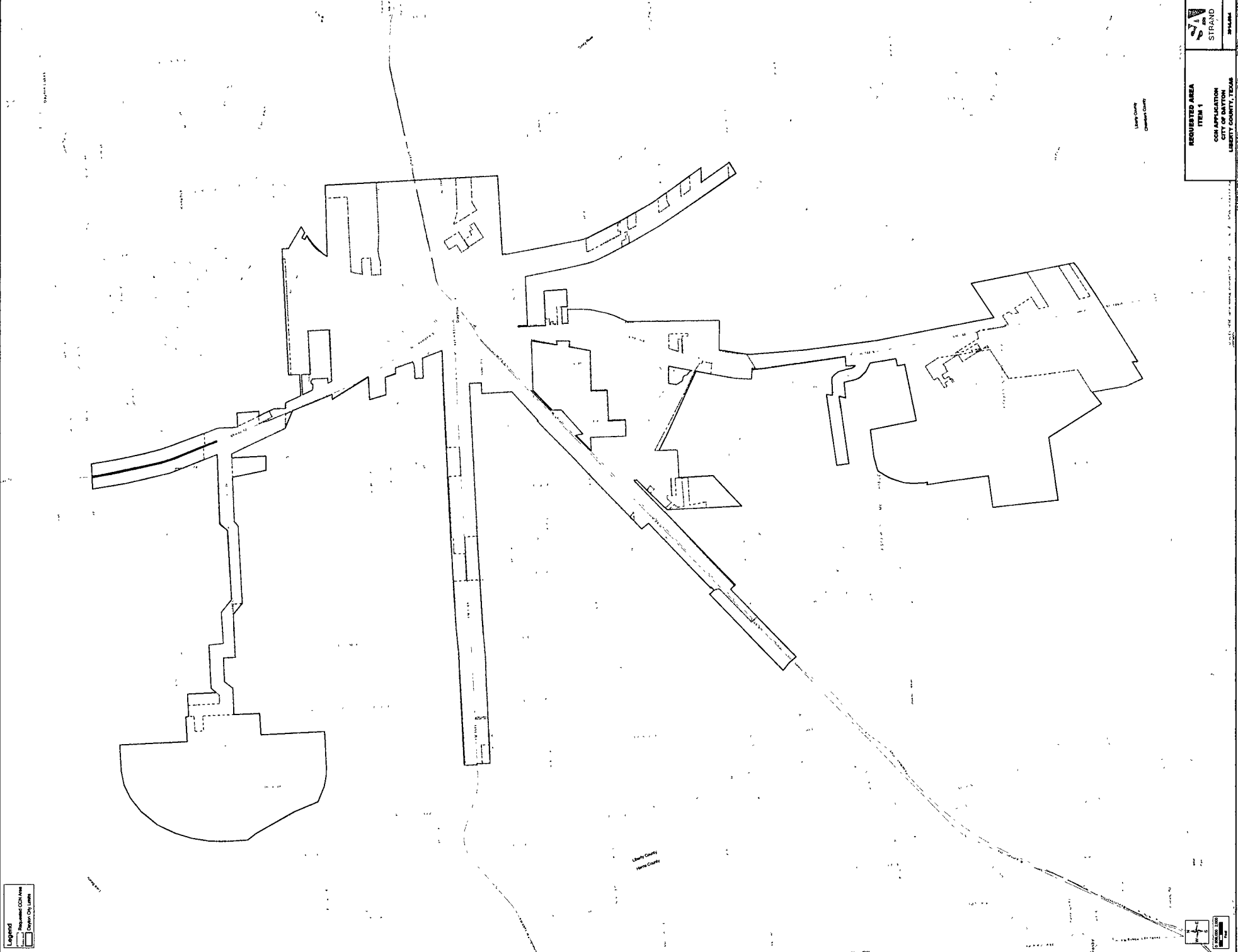
PUC Item #	Landowner in Opt-out	Owner's Name Per LCAD, HCAD, or CCAD	Property ID # in LCAD, HCAD, or CCAD	Total Acreage in Request	OR=Original Request NCR=Non-conforming Request	Acreage & Source Provided in Opt-out Request	LCAD,HCAD, or CCAD Acreage per tract	Add'l PUC Item Nos. Assoc.	GIS Source of Acreage	Difference in Acreage Between LCAD, HCAD, or CCAD and Opt-Out Request	Reason for Difference in Acreage	Comments & Notes
122	Stoesser Farms	Liberty Grand Partners LLC	31220	2627.7000	NCR	Tract 1 M&Bs and plat - 2414.5 ac	26.3490	11	LCAD	65.7190	All tracts from plat accounted for. Information differs between LCAD and that provided. Total ac in Request was 1 ac more than actual total.	
122	Stoesser Farms	Liberty Grand Partners LLC	31820	2627.7000	NCR	Tract 1 M&Bs and plat - 2414.5 ac	94.0000	11	LCAD	65.7190	All tracts from plat accounted for. Information differs between LCAD and that provided. Total ac in Request was 1 ac more than actual total.	
122	Stoesser Farms	Liberty Grand Partners LLC	32225	2627.7000	NCR	Tract 1 M&Bs and plat - 2414.5 ac	10.4000	11	LCAD	65.7190	All tracts from plat accounted for. Information differs between LCAD and that provided. Total ac in Request was 1 ac more than actual total.	
122	Stoesser Farms	Liberty Grand Partners LLC	193177	2627.7000	NCR	Tract 1 M&Bs and plat - 2414.5 ac	61.8500	11	LCAD	65.7190	All tracts from plat accounted for. Information differs between LCAD and that provided. Total ac in Request was 1 ac more than actual total.	
122	Stoesser Farms	Liberty Grand Partners LLC	193178	2627.7000	NCR	Tract 1 M&Bs and plat - 2414.5 ac	37.0200	11	LCAD	65.7190	All tracts from plat accounted for. Information differs between LCAD and that provided. Total ac in Request was 1 ac more than actual total.	
122	Stoesser Farms	Liberty Grand Partners LLC	193178	2627.7000	NCR	Tract 1 M&Bs and plat - 2414.5 ac	37.0200	11	LCAD	65.7190	All tracts from plat accounted for. Information differs between LCAD and that provided. Total ac in Request was 1 ac more than actual total.	
122	Stoesser Farms	BT Cobb Development, LLC	193180	2627.7000	NCR	Tract 1 M&Bs and plat - 2414.5 ac	30.3500	11	LCAD	65.7190	All tracts from plat accounted for. Information differs between LCAD and that provided. Total ac in Request was 1 ac more than actual total.	
122	Stoesser Farms	Liberty Grand Partners LLC	15703	2627.7000	NCR	Tract 1 M&Bs and plat - 2414.5 ac	792.7200	11	LCAD	65.7190	All tracts from plat accounted for. Information differs between LCAD and that provided. Total ac in Request was 1 ac more than actual total.	
122	Stoesser Farms	Liberty Grand Partners LLC	15703	2627.7000	NCR	Tract 1 M&Bs and plat - 2414.5 ac	792.7200	11	LCAD	65.7190	All tracts from plat accounted for. Information differs between LCAD and that provided. Total ac in Request was 1 ac more than actual total.	
122	Stoesser Farms	Liberty Grand Partners LLC	15703	2627.7000	NCR	Tract 1 M&Bs and plat - 2414.5 ac	792.7200	11	LCAD	65.7190	All tracts from plat accounted for. Information differs between LCAD and that provided. Total ac in Request was 1 ac more than actual total.	
122	Stoesser Farms	Liberty Grand Partners LLC	15703	2627.7000	NCR	Tract 1 M&Bs and plat - 2414.5 ac	792.7200	11	LCAD	65.7190	All tracts from plat accounted for. Information differs between LCAD and that provided. Total ac in Request was 1 ac more than actual total.	
122	Stoesser Farms	Liberty Grand Partners LLC	15703	2627.7000	NCR	Tract 1 M&Bs and plat - 2414.5 ac	792.7200	11	LCAD	65.7190	All tracts from plat accounted for. Information differs between LCAD and that provided. Total ac in Request was 1 ac more than actual total.	
122	Stoesser Farms	Liberty Grand Partners LLC	15703	2627.7000	NCR	Tract 1 M&Bs and plat - 2414.5 ac	792.7200	11	LCAD	65.7190	All tracts from plat accounted for. Information differs between LCAD and that provided. Total ac in Request was 1 ac more than actual total.	
122	Stoesser Farms	Liberty Grand Partners LLC	15703	2627.7000	NCR	Tract 1 M&Bs and plat - 2414.5 ac	792.7200	11	LCAD	65.7190	All tracts from plat accounted for. Information differs between LCAD and that provided. Total ac in Request was 1 ac more than actual total.	
122	Stoesser Farms	Liberty Grand Partners LLC	15703	2627.7000	NCR	Tract 1 M&Bs and plat - 2414.5 ac	792.7200	11	LCAD	65.7190	All tracts from plat accounted for. Information differs between LCAD and that provided. Total ac in Request was 1 ac more than actual total.	
122	Stoesser Farms	Liberty Grand Partners LLC	15703	2627.7000	NCR	Tract 1 M&Bs and plat - 2414.5 ac	792.7200	11	LCAD	65.7190	All tracts from plat accounted for. Information differs between LCAD and that provided. Total ac in Request was 1 ac more than actual total.	
122	Stoesser Farms	Liberty Grand Partners LLC	15703	2627.7000	NCR	Tract 1 M&Bs and plat - 2414.5 ac	792.7200	11	LCAD	65.7190	All tracts from plat accounted for. Information differs between LCAD and that provided. Total ac in Request was 1 ac more than actual total.	

PUC Item #	Landowner in Opt-out	Owner's Name Per LCAD, HCAD, or CCAD	Property ID # in LCAD, HCAD, or CCAD	Total Acreage in Request	OR=Original Request NCR=Non-conforming Request	Acreage & Source Provided in Opt-out Request	LCAD, HCAD, or CCAD Acreage per tract	Add'l PUC Item Nos. Assoc.	GIS Source of Acreage	Difference in Acreage Between LCAD, HCAD, or CCAD and Opt-Out Request	Reason for Difference in Acreage	Comments & Notes
122	Stoesser Farms	Liberty Grand Partners LLC	15703	2627.7000	NCR	Tract 1 M&Bs and plat - 2414.5 ac	792.7200	11	LCAD	65.7190	All tracts from plat accounted for. Information differs between LCAD and that provided. Total ac in Request was 1 ac more than actual total.	
122	Stoesser Farms	Liberty Grand Partners LLC	15703	2627.7000	NCR	Tract 1 M&Bs and plat - 2414.5 ac	792.7200	11	LCAD	65.7190	All tracts from plat accounted for. Information differs between LCAD and that provided. Total ac in Request was 1 ac more than actual total.	
122	Stoesser Farms	Liberty Grand Partners LLC	15703	2627.7000	NCR	Tract 1 M&Bs and plat - 2414.5 ac	792.7200	11	LCAD	65.7190	All tracts from plat accounted for. Information differs between LCAD and that provided. Total ac in Request was 1 ac more than actual total.	
122	Stoesser Farms	Liberty Grand Partners LLC	15703	2627.7000	NCR	Tract 1 M&Bs and plat - 2414.5 ac	792.7200	11	LCAD	65.7190	All tracts from plat accounted for. Information differs between LCAD and that provided. Total ac in Request was 1 ac more than actual total.	
122	Stoesser Farms	Liberty Grand Partners LLC	15703	2627.7000	NCR	Tract 1 M&Bs and plat - 2414.5 ac	792.7200	11	LCAD	65.7190	All tracts from plat accounted for. Information differs between LCAD and that provided. Total ac in Request was 1 ac more than actual total.	
122	Stoesser Farms	Liberty Grand Partners LLC	15703	2627.7000	NCR	Tract 1 M&Bs and plat - 2414.5 ac	792.7200	11	LCAD	65.7190	All tracts from plat accounted for. Information differs between LCAD and that provided. Total ac in Request was 1 ac more than actual total.	
122	Stoesser Farms	Liberty Grand Partners LLC	15706	2627.7000	NCR	Tract 1 M&Bs and plat - 2414.5 ac	104.3300	11	LCAD	65.7190	All tracts from plat accounted for. Information differs between LCAD and that provided. Total ac in Request was 1 ac more than actual total.	
122	Stoesser Farms	Liberty Grand Partners LLC	15708	2627.7000	NCR	Tract 1 M&Bs and plat - 2414.5 ac	72.2000	11	LCAD	65.7190	All tracts from plat accounted for. Information differs between LCAD and that provided. Total ac in Request was 1 ac more than actual total.	
122	Stoesser Farms	Liberty Grand Partners LLC	22123	2627.7000	NCR	Tract 1 M&Bs and plat - 2414.5 ac	41.0500	11	LCAD	65.7190	All tracts from plat accounted for. Information differs between LCAD and that provided. Total ac in Request was 1 ac more than actual total.	
122	Stoesser Farms	Liberty Grand Partners LLC	22123	2627.7000	NCR	Tract 1 M&Bs and plat - 2414.5 ac	41.0500	11	LCAD	65.7190	All tracts from plat accounted for. Information differs between LCAD and that provided. Total ac in Request was 1 ac more than actual total.	
122	Stoesser Farms	Liberty Grand Partners LLC	22123	2627.7000	NCR	Tract 1 M&Bs and plat - 2414.5 ac	41.0500	11	LCAD	65.7190	All tracts from plat accounted for. Information differs between LCAD and that provided. Total ac in Request was 1 ac more than actual total.	
122	Stoesser Farms	Liberty Grand Partners LLC	25358	2627.7000	NCR	Tract 1 M&Bs and plat - 2414.5 ac	94.1200	11	LCAD	65.7190	All tracts from plat accounted for. Information differs between LCAD and that provided. Total ac in Request was 1 ac more than actual total.	
122	Stoesser Farms	Multiple Owners	246159	2627.7000	NCR	Tract 2 M&Bs and plat - 212.2 ac	84.0500	11	LCAD	65.7190	All tracts from plat accounted for. Information differs between LCAD and that provided. Total ac in Request was 1 ac more than actual total.	
122	Stoesser Farms	Multiple Owners	246167	2627.7000	NCR	Tract 2 M&Bs and plat - 212.2 ac	118.3700	11	LCAD	65.719 +	All tracts from plat accounted for. Information differs between LCAD and that provided. Total ac in Request was 1 ac more than actual total.	more ac listed here than in opt-out, but going tract by tract according to M&Bs and plat, these properties are in the submittal
125	Mark Stoesser	Mark A. Stoesser	32826	343.1021	NCR	M&Bs & plat - 10.016 ac	10.0000	16	LCAD	1.1734	difference in LCAD and from save & except areas	0.16 ac less in LCAD than in M&Bs
125	Mark Stoesser	Mark A. Stoesser	30334	343.1021	NCR	M&Bs & plat - 32.063 ac	32.5000	16	LCAD	1.1734	difference in LCAD and from save & except areas	0.437 ac more in LCAD than in M&Bs
125	Mark Stoesser	Mark A. Stoesser	25413	343.1021	NCR	M&Bs & plat - 55.1041 ac	53.71	16	LCAD	1.1734	difference in LCAD and from save & except areas	requested overall acreage of 55.1041 instead of taking out the 1.4504 acres in road row
125	Mark Stoesser	Mark A. Stoesser	30333	343.1021	NCR	M&Bs & plat - 77.83 ac	74.0000	16	LCAD	1.1734	difference in LCAD and from save & except areas	Save & except 1.99 ac = 75.84 ac, leaving 1.84 ac difference (1.99 ac removed from total acres in request)
125	Mark Stoesser	Grand Parkway Infrastructure, LLC	245328	343.1021	NCR	M&Bs & plat - 170.079 ac	28.37	16	LCAD	1.1734	difference in LCAD and from save & except areas	sold this part of parcel 25414 in 9/2019

PUC Item #	Landowner in Opt-out	Owner's Name Per LCAD, HCAD, or CCAD	Property ID # in LCAD, HCAD, or CCAD	Total Acreage in Request	OR=Original Request NCR=Non-conforming Request	Acreage & Source Provided in Opt-out Request	LCAD,HCAD, or CCAD Acreage per tract	Add'l PUC Item Nos. Assoc.	GIS Source of Acreage	Difference in Acreage Between LCAD, HCAD, or CCAD and Opt-Out Request	Reason for Difference in Acreage	Comments & Notes
125	Mark Stoesser	Mark A. Stoesser	25414	343.1021	NCR	M&Bs & plat - 170.079 ac	141.6300	16	LCAD	1.1734	difference in LCAD and from save & except areas	0.0790 ac difference from M&Bs. sold part of this in 9/2019-see parcel #245328 / total area in deeds=345.0921.
126	Jack Stoesser	Jack Stoesser	23531	540.4700	NCR	LCAD property ID # - 69.38 ac	69.3800	16	LCAD	8.3800	difference in LCAD, plus owner submitted property ID# for 3.144 ac that isn't in the system	
126	Jack Stoesser	Jack Stoesser	23533	540.4700	NCR	LCAD property ID # - 55.67 ac	55.6700	16	LCAD	8.3800	difference in LCAD, plus owner submitted property ID# for 3.144 ac that isn't in the system	
126	Jack Stoesser	Jack Stoesser	23533	540.4700	NCR	LCAD property ID # - 55.67 ac	55.6700	16	LCAD	8.3800	difference in LCAD, plus owner submitted property ID# for 3.144 ac that isn't in the system	
126	Jack Stoesser	Jack Stoesser	23593	540.4700	NCR	LCAD property ID # - 0.30 ac	0.3000	16	LCAD	8.3800	difference in LCAD, plus owner submitted property ID# for 3.144 ac that isn't in the system	
126	Jack Stoesser	Jack Stoesser	25518	540.4700	NCR	LCAD property ID # - 2.0 ac	2.0000	16	LCAD	8.3800	difference in LCAD, plus owner submitted property ID# for 3.144 ac that isn't in the system	
126	Jack Stoesser	Jack Stoesser	29915	540.4700	NCR	LCAD property ID # - 30.0 ac	39.7200	16	LCAD	8.3800	difference in LCAD, plus owner submitted property ID# for 3.144 ac that isn't in the system	
126	Jack Stoesser	State of Texas	246955	540.4700	NCR	LCAD property ID # - 10.0 ac	0.2800	16	LCAD	8.3800	difference in LCAD, plus owner submitted property ID# for 3.144 ac that isn't in the system	
126	Jack Stoesser	Jack Stoesser	30277	540.4700	NCR	LCAD property ID # - 16 ac	16.0000	16	LCAD	8.3800	difference in LCAD, plus owner submitted property ID# for 3.144 ac that isn't in the system	
126	Jack Stoesser	Jack Stoesser	30921	540.4700	NCR	LCAD property ID # - 7.21 ac	7.2100	16	LCAD	8.3800	difference in LCAD, plus owner submitted property ID# for 3.144 ac that isn't in the system	
126	Jack Stoesser	Jack Stoesser	30921	540.4700	NCR	LCAD property ID # - 7.21 ac	7.2100	16	LCAD	8.3800	difference in LCAD, plus owner submitted property ID# for 3.144 ac that isn't in the system	
126	Jack Stoesser	Jack Stoesser	30932	540.4700	NCR	LCAD property ID # - 1.02 ac	1.0200	16	LCAD	8.3800	difference in LCAD, plus owner submitted property ID# for 3.144 ac that isn't in the system	
126	Jack Stoesser	Jack Stoesser	25515	540.4700	NCR	M&Bs & LCAD property ID# -50.0 ac	50.0000	16	LCAD	8.3800	difference in LCAD, plus owner submitted property ID# for 3.144 ac that isn't in the system	
126	Jack Stoesser	Jack Stoesser	25362	540.4700	NCR	M&Bs & plat - 78.15 ac	15.7700	16	LCAD	8.3800	difference in LCAD, plus owner submitted property ID# for 3.144 ac that isn't in the system	
126	Jack Stoesser	Jack Stoesser	25364	540.4700	NCR	M&Bs & plat - 78.15 ac	10.8100	16	LCAD	8.3800	difference in LCAD, plus owner submitted property ID# for 3.144 ac that isn't in the system	
126	Jack Stoesser	Jack Stoesser	25365	540.4700	NCR	M&Bs & plat - 78.15 ac	17.3600	16	LCAD	8.3800	difference in LCAD, plus owner submitted property ID# for 3.144 ac that isn't in the system	
126	Jack Stoesser	Jack Stoesser	25366	540.4700	NCR	M&Bs & plat - 78.15 ac	16.4900	16	LCAD	8.3800	difference in LCAD, plus owner submitted property ID# for 3.144 ac that isn't in the system	
126	Jack Stoesser	Jack Stoesser	192881	540.4700	NCR	M&Bs & plat - 78.15 ac	8.1100	16	LCAD	8.3800	difference in LCAD, plus owner submitted property ID# for 3.144 ac that isn't in the system	
126	Jack Stoesser	Jack Stoesser	25361	540.4700	NCR	M&Bs & plat - 78.15 ac	144.3800	16	LCAD	8.3800	difference in LCAD, plus owner submitted property ID# for 3.144 ac that isn't in the system	
126	Jack Stoesser	Jack Stoesser	27619	540.4700	NCR	M&Bs & plat - 78.15 ac	26.1400	16	LCAD	8.3800	difference in LCAD, plus owner submitted property ID# for 3.144 ac that isn't in the system	
126	Jack Stoesser	Jack Stoesser	27619	540.4700	NCR	M&Bs & plat - 78.15 ac	26.1400	16	LCAD	8.3800	difference in LCAD, plus owner submitted property ID# for 3.144 ac that isn't in the system	
126	Jack Stoesser	Jack Stoesser	192875	540.4700	NCR	M&Bs & plat - 78.15 ac	10.1000	16	LCAD	8.3800	difference in LCAD, plus owner submitted property ID# for 3.144 ac that isn't in the system	
126	Jack Stoesser	Jack Stoesser	192876	540.4700	NCR	M&Bs & plat - 78.15 ac	18.3000	16	LCAD	8.3800	difference in LCAD, plus owner submitted property ID# for 3.144 ac that isn't in the system	

PUC Item #	Landowner in Opt-out	Owner's Name Per LCAD, HCAD, or CCAD	Property ID # in LCAD, HCAD, or CCAD	Total Acreage in Request	OR=Original Request NCR=Non-conforming Request	Acreage & Source Provided in Opt-out Request	LCAD,HCAD, or CCAD Acreage per tract	Add'l PUC Item Nos. Assoc.	GIS Source of Acreage	Difference in Acreage Between LCAD, HCAD, or CCAD and Opt-Out Request	Reason for Difference in Acreage	Comments & Notes
126	Jack Stoesser	Jack Stoesser	192877	540.4700	NCR	M&Bs & plat - 78.15 ac	5.0000	16	LCAD	8.3800	difference in LCAD, plus owner submitted property ID# for 3.144 ac that isn't in the system	
126	Jack Stoesser	Jack Stoesser	192878	540.4700	NCR	M&Bs & plat - 78.15 ac	8.6000	16	LCAD	8.3800	difference in LCAD, plus owner submitted property ID# for 3.144 ac that isn't in the system	
126	Jack Stoesser	Jack Stoesser	192879	540.4700	NCR	M&Bs & plat - 78.15 ac	9.4500	16	LCAD	8.3800	difference in LCAD, plus owner submitted property ID# for 3.144 ac that isn't in the system	
127	W.M Moreau Estate	W.M. Moreau	25190	193.7965	OR	CAD map - 193.7965 ac	193.7965	49	LCAD			
127	W.M Moreau Estate	W.M. Moreau	25190	193.7965	OR	CAD map - 193.7965 ac	193.7965	49	LCAD			

Attachment C  
“Requested Area” Map



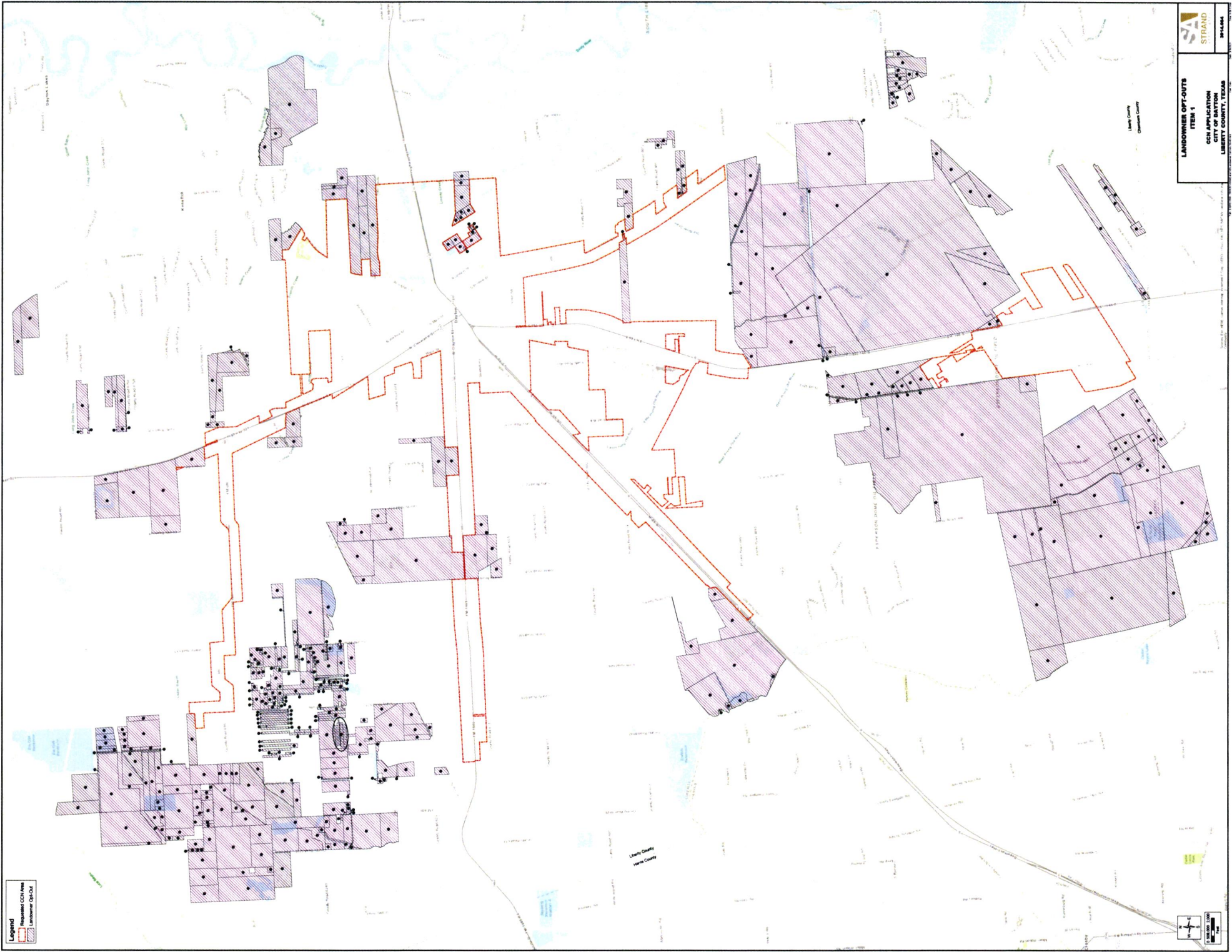
Legend  
 Light Gray Requested COW Area  
 Dark Gray Other COW Areas

LIBERTY COUNTY  
 CLERK OF COURTS  
 REQUESTED AREA  
 ITEM 1  
 STRAND  
 COW APPLICATION  
 FOR AN APPLICATION  
 OF VARIATION  
 LIBERTY COUNTY, TEXAS

North Arrow  
 Scale: 1" = 100'



**Attachment D**  
**“Landowner Opt-Outs” Map**



**Legend**  
 Required CCN Area  
 Landowner Opt-Out

**STRAND**  
 LANDOWNER OPT-OUTS  
 ITEM 1  
 CCN APPLICATION  
 CITY OF DAYTON  
 LIBERTY COUNTY, TEXAS

North Arrow  
 Scale: 1" = 100'

**Attachment E**  
**Landowner Correspondence**

## Maris Chambers

---

**From:** Schroeder, Cheryl <Cheryl.Schroeder@strand.com>  
**Sent:** Friday, March 12, 2021 2:27 PM  
**To:** Logan Sullivan  
**Cc:** Hajek, Kelly; Maris Chambers; Montes, Tracy; David Klein; Christina Thompson; 'Brandon Davis'  
**Subject:** RE: Landowner Opt Out of the City of Dayton CCN

Thank you for taking my call and talking it through with me.  
Cheryl Schroeder



**Cheryl Schroeder**  
Strand Associates, Inc.® (F-8405)  
979 836 7937 ext 6242  
[cheryl.schroeder@strand.com](mailto:cheryl.schroeder@strand.com) | [www.strand.com](http://www.strand.com)

**From:** Logan Sullivan <lsullivan@grayent.com>  
**Sent:** Friday, March 12, 2021 2:24 PM  
**To:** Schroeder, Cheryl <Cheryl.Schroeder@strand.com>  
**Cc:** Hajek, Kelly <Kelly.Hajek@strand.com>; Maris Chambers <mchambers@lglawfirm.com>; Montes, Tracy <Tracy.Montes@puc.texas.gov>; David Klein <d Klein@lglawfirm.com>; Christina Thompson <cthompson@lglawfirm.com>; 'Brandon Davis' <brandon@bdavislaw.net>  
**Subject:** RE: Landowner Opt Out of the City of Dayton CCN

[EXTERNAL EMAIL]: Verify sender before opening links or attachments.

Cheryl,  
We approve the area represented on the map as shown owned by River Ranch Holdings, LLC.  
Thanks,

**Logan Gray Sullivan**  
**River Ranch Holdings, LLC**  
**P.O. Box 638**  
**Baytown, TX, 77522**  
**Cell. 936-402-2924**  
[lsullivan@grayent.com](mailto:lsullivan@grayent.com)

**From:** Schroeder, Cheryl <Cheryl.Schroeder@strand.com>  
**Sent:** Friday, March 12, 2021 1:10 PM  
**To:** Logan Sullivan <lsullivan@grayent.com>  
**Cc:** Hajek, Kelly <Kelly.Hajek@strand.com>; Maris Chambers <mchambers@lglawfirm.com>; Montes, Tracy <Tracy.Montes@puc.texas.gov>; David Klein <d Klein@lglawfirm.com>; Christina Thompson

<cthompson@lglawfirm.com>; 'Brandon Davis' <brandon@bdavislaw.net>

**Subject:** Landowner Opt Out of the City of Dayton CCN

River Ranch Holdings, LLC  
P.O. Box 638  
Baytown, TX 77522  
713-899-4949

Mr. Gray,

I'm contacting you in reference to the opt-out submittal for the City of Dayton's CCN for River Ranch Holdings, LLC. There is a discrepancy between the acreage stated in the deed you provided as 6957.09 acres when compared to 6915.79 acres we obtained from Liberty County's Central Appraisal District (LCAD) mapping data for the River Ranch Holdings, LLC property.

We are asking for permission to use the LCAD mapping data and acreage for the River Ranch Holdings, LLC property as shown on the attached map. Please review the map including 6915.79 acres attached to this email. Then, email me back that either the property is correctly shown on the attached map or reject the LCAD mapping of your property as we have it shown for your opt-out request. I have marked around the property in blue. This map also shows all of the landowner opt-outs in magenta that were received in PUC docket 48350.

Thank you for your time and help.

Cheryl Schroeder  
Strand Associates, Inc



**Cheryl Schroeder**

Strand Associates, Inc. (F-8405)

979 836 7937 ext 6242

[cheryl\\_schroeder@strand.com](mailto:cheryl_schroeder@strand.com) | [www.strand.com](http://www.strand.com)

## Maris Chambers

---

**From:** Daniel Simnacher <dsimnacher@yahoo.com>  
**Sent:** Friday, March 26, 2021 7:35 AM  
**To:** Schroeder, Cheryl  
**Subject:** Re: Landowner Opt Out - Dayton CCN

[EXTERNAL EMAIL]: Verify sender before opening links or attachments.

Sorry about the delay. Been out of pocket. The highlighted magenta area looks correct.

Sent from my iPhone

On Mar 17, 2021, at 3:11 PM, Schroeder, Cheryl wrote:

Mr. Daniel Simnacher and Ms. Lisa Simnacher,

Good afternoon. I'm contacting you to make sure that you received my email last Friday afternoon with information about the City of Dayton CCN Opt Out. If not, please let me know and I will email it to you again.

I need to have this back in the hands of the Public Utility Commission of Texas in a couple of weeks, so I hope to hear from you soon, while realizing you need time to review the information. If you have any questions at all, please feel free to contact me via email or the phone number below.

Thank you,  
Cheryl Schroeder

**Cheryl Schroeder**  
Strand Associates, Inc.° (F-8405)  
979.836.7937 ext. 6242  
[cheryl.schroeder@strand.com](mailto:cheryl.schroeder@strand.com) | [www.strand.com](http://www.strand.com)

## Maris Chambers

---

**From:** Schroeder, Cheryl <Cheryl.Schroeder@strand.com>  
**Sent:** Friday, March 12, 2021 2:30 PM  
**To:** DSimmacher@yahoo.com  
**Cc:** Hajek, Kelly; Maris Chambers; Montes, Tracy; David Klein; Christina Thompson; 'Brandon Davis'  
**Subject:** Landowner Opt Out of the City of Dayton CCN  
**Attachments:** Landowner OptOuts-Simmacher Trust\_pdf

Thank you for helping get your email address correct! Below is what I sent previously.  
Cheryl Schroeder

---

Daniel Simmacher Exempt Lifetime Trust  
P.O. Box 6384  
Kingwood, TX 77325

Lisa Simmacher Exempt Lifetime Trust  
5615 Palisades Falls Trail  
Kingwood, TX 77345

Mr. Daniel Simmacher and Ms. Lisa Simmacher,

I'm contacting you in reference to the opt-out submittal for the City of Dayton's CCN for the Exempt Lifetime Trusts under your names. There is a discrepancy between the acreage stated in the deed provided as 3747.519 acres when compared to 3799.0361 acres we obtained from Liberty County's Central Appraisal District (LCAD) mapping data for the Simmacher Trust property.

We are asking for permission to use the LCAD mapping and acreage of Simmacher Trust property as shown on the attached map. Please review the map including 3799.0361 acres attached to this email. Then, email me back that either the property is correctly shown on the attached map or reject the LCAD mapping of your property as we have it shown for your opt-out request. I have marked around the property in blue. This map shows all of the landowner opt-outs in magenta that were received in PUC docket 48350.

Thank you for your time and help.

Cheryl Schroeder  
Strand Associates, Inc



**Cheryl Schroeder**  
Strand Associates, Inc \* (F-8405)  
979 836 7937 ext 6242  
[cheryl.schroeder@strand.com](mailto:cheryl.schroeder@strand.com) | [www.strand.com](http://www.strand.com)

## Maris Chambers

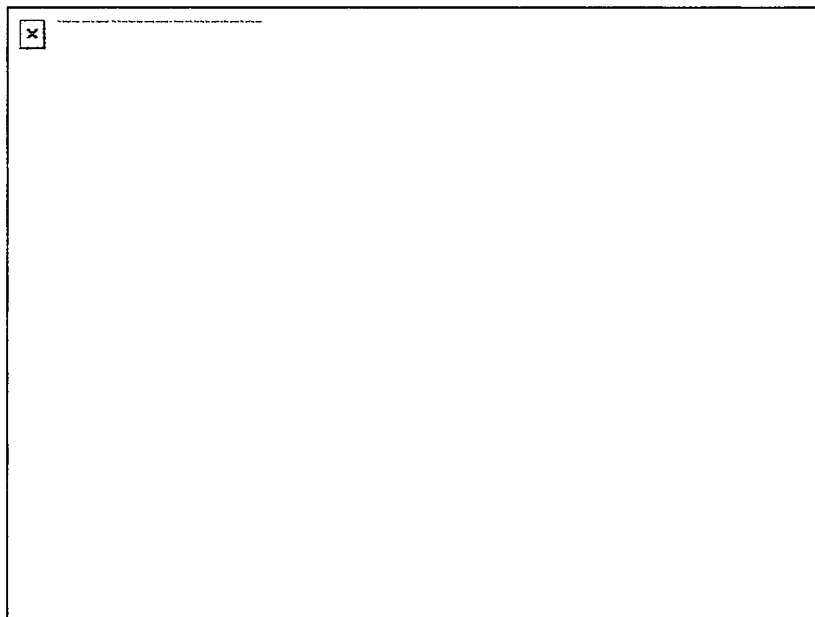
---

**From:** Schroeder, Cheryl <Cheryl.Schroeder@strand.com>  
**Sent:** Wednesday, March 17, 2021 3:42 PM  
**To:** Hajek, Kelly; Maris Chambers; David Monte; Montes, Tracy; Christina Thompson  
**Subject:** FW: Fitzhenry 85.45 acres  
**Attachments:** IMG\_3332.jpg

This is the response I received from Mr. Fitzhenry.  
Cheryl

**From:** Keith Fitzhenry Sr <keithfitzhenry@yahoo.com>  
**Sent:** Wednesday, March 17, 2021 3:35 PM  
**To:** Schroeder, Cheryl <Cheryl.Schroeder@strand.com>  
**Subject:** Fitzhenry 85.45 acres

[EXTERNAL EMAIL]: Verify sender before opening links or attachments.



Hello Cheryl,  
This is the correct shape of our 85.45 acres.  
Keith Fitzhenry

Sent from my iPhone



## Maris Chambers

---

**From:** Schroeder, Cheryl <Cheryl.Schroeder@strand.com>  
**Sent:** Friday, March 12, 2021 1:15 PM  
**To:** keithfitzhenry@yahoo.com  
**Cc:** Hajek, Kelly; Maris Chambers; Montes, Tracy; David Klein; Christina Thompson; 'Brandon Davis'  
**Subject:** Landowner Opt Out of the City of Dayton CCN  
**Attachments:** Landowner OptOuts-Fitzhenry\_pdf

Mr. Keith Fitzhenry  
4125 FM 1409  
Dayton, TX 77535  
713-248-7658 - cell

Mr. Fitzhenry,

I'm contacting you in reference to your opt-out submittal for the City of Dayton's CCN. There is a discrepancy between the acreage stated in the deeds provided as 85.45 total acres when compared to 45 acres we obtained from Liberty County Central Appraisal District's (LCAD) mapping data for the Fitzhenry property. It appears that the same LCAD information associated with the 10 acres sold to Kristina Malatinski is also associated with the 50.45 acre tract you own, making the total acreage shown on LCAD for your property to opt-out being only 45 acres instead of 85.45 acres.

We are asking permission to use the LCAD mapping data and acreage information for the Fitzhenry property as shown on the attached map. Please review the map including 45 acres attached to this email. Then, email me back that either the property is correctly shown on the attached map or reject the LCAD mapping of your property as we have it shown for your opt-out request. I have marked around the property in blue. This map shows all of the landowner opt-outs in magenta that were received in PUC docket 48350.

Thank you for your time and help.

Cheryl Schroeder  
Strand Associates, Inc



**Cheryl Schroeder**  
Strand Associates, Inc \* (F-8405)  
979 836 7937 ext 6242  
[cheryl.schroeder@strand.com](mailto:cheryl.schroeder@strand.com) | [www.strand.com](http://www.strand.com)