

Control Number: 46494



Item Number: 13

Addendum StartPage: 0

DOCKET NO. 46494

RECEIVED

2017 JAN 27 PM 2:22

APPLICATION OF WIEDENFELD
WATER WORKS, INC. AND SWWC
UTILITIES, INC. DBA WATER
SERVICES, INC. FOR APPROVAL OF
INTER-COMPANY TRANSFER OF
ASSETS

§
§
§
§
§
§

PUBLIC UTILITY COMMISSION

PUBLIC UTILITY COMMISSION
FILING CLERK

OF TEXAS

**RESPONSES OF WIEDENFELD WATER WORKS, INC. AND
SWWC UTILITIES, INC. TO COMMISSION STAFF'S FIRST
REQUEST FOR INFORMATION QUESTION NOS. STAFF 1-1 THROUGH STAFF 1-3**

To: Staff of the Public Utility Commission of Texas ("Staff"), by and through its attorney of record, Jason Haas, 1701 North Congress Avenue, P. O. Box 13326, Austin, Texas 78711-3326.

Wiedenfeld Water Works, Inc. ("WWW") and SWWC Utilities, Inc. ("SWWC") files their Responses to the Public Utility Commission of Texas ("Commission") Staff's First Requests for Information. This response may be treated by all parties as if it were filed under oath. These responses are timely filed.

Respectfully submitted,

LLOYD GOSSELINK

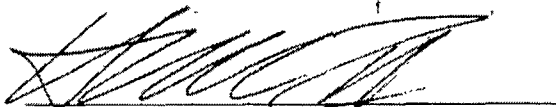
ROCHELLE & TOWNSEND, P.C.

816 Congress Avenue, Suite 1900

Austin, Texas 78701

Telephone: (512) 322-5800

Facsimile: (512) 472-0532



LAMBETH TOWNSEND

State Bar No. 20167500

WILLIAM A. FAULK, III

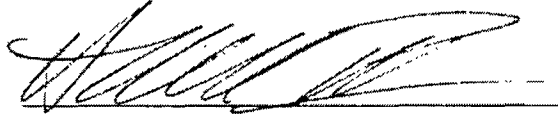
State Bar No. 24075674

ATTORNEYS FOR

WIEDENFELD WATER WORKS, INC. AND
SWWC UTILITIES, INC.

CERTIFICATE OF SERVICE

I, Cody Faulk, attorney, certify that a copy of this document was served on all parties of record in this proceeding on this 27th day of January, 2017, in the following manner: hand delivered, sent via facsimile, or mailed by U.S. First Class Mail.


CODY FAULK

DOCKET NO. 46494

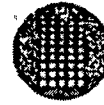
**RESPONSES OF WWW AND SWWC TO
STAFF'S FIRST REQUESTS FOR INFORMATION
QUESTION NOS. STAFF 1-1 THROUGH 1-3**

STAFF NO. 1-1: Please provide the capacity exceptions sent to the TCEQ for Oak Ridge Estates and Verde Park.

- Has the TCEQ responded to these exceptions? If so, provide their responses.

RESPONSE: No "capacity exceptions" were submitted to TCEQ for Oak Ridge Estates and Verde Park. Alternatively, "85% Planning Reports" were submitted for both systems. The TCEQ responded to both. The reports and the responses are attached as Attachment Staff 1-1.

Prepared by: George Freitag, P.E.
Sponsored by: George Freitag, P.E.



**Wiedenfeld
Water Works, Inc.**

A SouthWest Water Company

1620 Grand Avenue Parkway
Suite 140
Pflugerville, TX 78660

August 1, 2016

Texas Commission on Environmental Quality
Plan Review Team – MC 159
PO Box 13087
Austin, TX 78711-3087

Re: 85% Planning Report
Verde Park Estates Water System, PWS ID No. 1330027

To Whom it May Concern:

During the most recent comprehensive compliance investigation of the Verde Park Estates water system, conducted April 25-26, 2016, it was noted the system has reached 97% of its service pump capacity.

Please see attached 85% Planning Report for the Verde Park Estates Water System.

If you have any questions, please contact us at (512) 219-2294.

Sincerely,

Tim Williford
Environmental Health and Safety Manager
Southwest Water Company

Enclosures

CC: TCEQ Region 13
Gary Rose
Joe Torralva

Technical Memorandum

VERDE PARK ESTATES

Public Water System ID No: 1330027

CCN No. 12052

July 8, 2016

Prepared By:



**SouthWest
Water Company**

12535 Reed Road
Sugar Land, TX 77478
(281) 207 – 5800

TABLE OF CONTENTS

Introduction	1
Existing Conditions	2
Anticipated Ultimate Conditions	3
Proposed Improvements	4
Conclusion	4

INTRODUCTION

Verde Park Estates Park PWS ("the District"), Public Water System ID No. 1330027 is an existing public water system located in southern Kerr County, Texas, approximately 2 miles South of Center Point, Texas and is bounded on the north by Texas FM 460. The District currently provides potable water service to 68 equivalent single family connections ("ESFC's") under Certificate of Convenience and Necessity No. 12052, and is owned, operated, and maintained by SouthWest Water Company ("SWWC", TCEQ Reference Number CN600650725). A Location and Service Area Map for the District is provided herein as Appendix A.

On June 5, 2016, SWWC completed a comprehensive analysis of the District's existing water supply, storage, and distribution facilities. The intent of this analysis was to identify any current facility deficiencies from a regulatory and operational perspective, and at the same time evaluate the adequacy of those facilities to serve anticipated future growth as well as the ultimate capacity of the District's service area (see Appendix A). This document is further intended to serve as the TCEQ 85% Capacity Report as specified by 30 TAC §291.93(f)(3).

EXISTING CONDITIONS

The District's primary source of water is ground water supplied by one water well. Groundwater is pumped from the existing wells to the District's existing Ground Water Treatment Plant No. 1, where the raw water is treated, disinfected, stored, and ultimately pumped to the existing water distribution system for customer consumption.

The District's existing water supply, storage, and distribution system consists of the following components:

1. One (1) 54 gpm water well (499 TVD) with a 10 HP submersible water pump.
2. One (1) 56,000 gallon bolted steel standpipe storage tank, providing a total storage capacity of 56,000 gallons.
3. One (1) 5 HP close-coupled booster pumps, providing a firm pumping capacity of 60 gpm (with the largest booster pump out of service).
4. One (1) 3 HP close-coupled booster pumps, providing a firm pumping capacity of 60 gpm (with the largest booster pump out of service).
5. Two (2) welded steel hydro pneumatic tanks, providing a total pressure tank capacity of 1,920 gallons.
6. One (1) liquid chlorine disinfection system, fully functional and complete with all necessary and required equipment, piping, and appurtenances.

As of the date of this report, the District currently provides potable water service to 68 active ESFC's. Table 1, below, illustrates the District's actual existing water system capacities, and compares them to the TCEQ's Minimum Water System Capacity Requirements as specified by 30 TAC §290.45, as well as to the system's 85% Capacity as specified by 30 TAC §291.93(f)(3).

TABLE 1-A: ANALYSIS OF EXISTING WATER SYSTEM CAPACITIES

District Name: Verde Park
 Existing Active ESFC's: 68
 Elevated Connections: 47
 Hydro-Tank Connections: 21

TCEQ Minimum Water System Capacity Requirements per 30 TAC §290.45:

Well: 0.6 gpm/ESFC
 Booster Pumps: 2.0 gpm/ESFC
 Ground Storage Tanks: 200.0 gal/ESFC
 Hydropneumatic Tanks: 20.0 gal/ESFC
 Elevated Storage: 100.0 gal/ESFC

TOTAL EXISTING SYSTEM CAPACITY

System Component	Actual Existing Capacity	Required Min. Capacity	85% Capacity	Rated Capacity (ESFC's)
Well	54 gpm	41 gpm	46 gpm	90
Booster Pumps ⁽¹⁾	60 gpm	42 gpm	51 gpm	30
Elevated Tanks	18,000 gpm	4,700 gal	15,300 gpm	90
Ground Storage Tanks	36,000 gal	13,600 gal	30,600 gal	180
Hydropneumatic Tanks	1,920 gal	420 gal	1,632 gal	96

(1). The actual existing booster pump capacity is the firm pumping capacity with the largest pump out of service.

As indicated above in Tables 1-A, two pressure planes exist with approx. 21 customers connected to the booster – pump & hydro pneumatic tank assembly hydraulically separated from the standpipe (Ground Storage Tank). The remaining 47 connections are served from the elevated storage. The booster pumps are each controlled by a pressure switch located at or in the piping to the pressure tank. They are set to operate automatically between 45 (cut-on) and 55-psi (cut-off) pressures. The pumps can be manually operated at the pressure control switch.

ANTICIPATED ULTIMATE CONDITIONS

An analysis of the District's current service area boundary reveals that, at this time, there are 75 developed residential lots, with 50 residential lots remaining to be developed.

As noted above, the District currently provides potable water service to 68 active ESFC's. It is anticipated that the District will grow over time, thereby increasing water demand until the District reaches its fully developed status. With 68 currently active ESFC's, 50 residential lots remaining to be developed, it is anticipated that the District will ultimately serve 120 ESFC's. Table 2, below, summarizes the current and the anticipated ultimate water demand in terms of ESFC's.

TABLE 2: EQUIVALENT SINGLE FAMILY CONNECTIONS

Connection Type	Current	Anticipated Future
Single Family Residential	72	150
Multi Family Residential		
Commercial		
Industrial		
Schools		
Churches		
Other		
TOTAL	72	150

Thus, it is anticipated that the District will ultimately serve 150 ESFC's. Bearing the above data in mind, an analysis of the District's anticipated future water demand was performed. Table 3, below, illustrates the District's actual existing water system capacities, and compares them to the anticipated ultimate required minimum water system capacities, as specified by 30 TAC §290.45, as well as to the system's ultimate 85% Capacity, as specified by 30 TAC §291.93(f)(3).

TABLE 3: ANALYSIS OF REQUIRED ULTIMATE WATER SYSTEM CAPACITIES

District Name: Verde Park

Total Ultimate ESFC's: 150
 Elevated Connections 120
 Hydro Tank Connections 30

TCEQ Minimum Water System Capacity Requirements per 30 TAC §290.45:

Well: 0.6 gpm/ESFC
 Booster Pumps: 2.0 gpm/ESFC
 Ground Storage Tanks: 200.0 gal/ESFC
 Hydropneumatic Tanks: 20.0 gal/ESFC
 Elevated Tanks 100.0 gal/ESFC

ANTICIPATED ULTIMATE SYSTEM CAPACITY REQUIREMENTS

System Component	Actual Existing Capacity	Required Ult. Min. Capacity	Ult. 85% Capacity	Rated Capacity (ESFC's)
Well	52 gpm	90 gpm	77 gpm	87
Booster Pumps ⁽¹⁾	60 gpm	60 gpm	51 gpm	30
Elevated Storage	18,000 gal	15,000 gal	12,750 gpm	180
Ground Storage Tanks	36,000 gal	30,000 gal	25,500 gal	180
Hydropneumatic Tanks	1,920 gal	3,000 gal	2,550 gal	96

(1) The actual existing booster pump capacity is the firm pumping capacity with the largest pump out of service.

As indicated above, additional water well capacity shall be required for the build-out of the service area. Planning for the build-out improvements shall be done as connections come on-line.

PROPOSED IMPROVEMENTS

As of this date, we comply with the 85% capacity rules as operated- separated into two hydraulically distinct pressure planes. One-pressure plane servicing 21 connections by pump & hydro-tank, while 47 connections at MSL 1520 and lower being served by elevated means.

However, I shall recommend that we install a 5HP pump to replace the existing 3 HP pump to standardize the pump array. We shall recommend the 3-HP pump replacement added to the capital budget for 2017.

CONCLUSION

In conclusion, in order to have a more standardized pump array configuration – it is recommended that we remove and replace 3-HP booster pump to a 5-HP booster pump.

Monitoring Plan for

Verde Park Water System

1-830/634-2321

PWS ID# 1330027 Kerr County, Texas

Responsible Official: R. Charles Wiedenfeld, President

Water Supply Contact: David Jones, Operator, 830-739-5052

133 CP River Road E.

Center Point, Texas 78010

1-830/634-2321

Verde Park Water System owns and operates one groundwater well. The water system serves 180 people with 60 connections.

A. RAW WATER SAMPLING

Periodic sampling by TCEQ or their contractor for all the state required constituents. We are not currently required to collect raw water bacteriological samples. Iron content is monitored periodically with Hach Cat. No. 2230-02 colorimeter and treatment by Napco 201 sequestering agent is anticipated. Upon use of Napco 201 phosphates by Hach Cat. No. 22501 will be analyzed routinely.

B. IN - PLANT SAMPLING

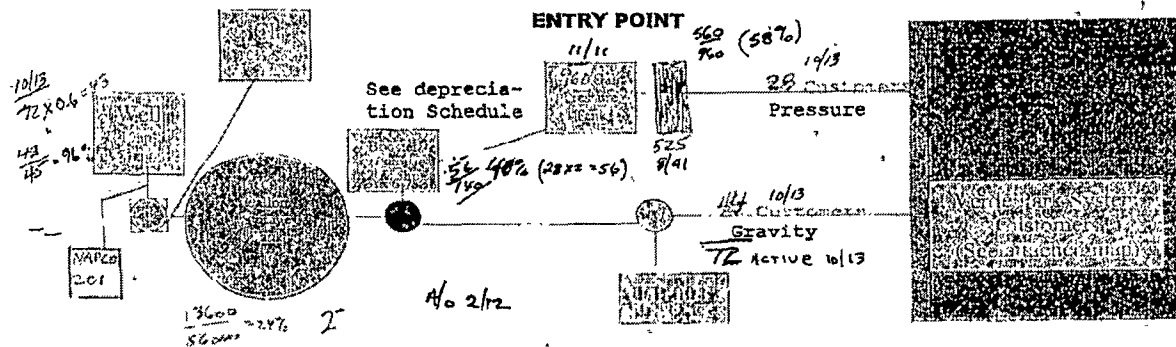
Disinfection, using 10% hypochlorite, is monitored for free chlorine with Hach Cat. #2230-02 colorimeter. Napco 201 (polyphosphate) is used to treat for iron content in well. Analysis of content occurs with use of Hach Cat. No. 2250.

C. ENTRY POINT SAMPLING

Entry Point	Sample Site	Source	Plant Name
EP301	Sample tap on Pressure Storage tank in pump house	Middle Trinity Aquifer	Well 1 234 Verde Park Blvd

Verde Park Water System

PWS ID 1330027



Verde Park

1. Disinfectant Entering the Distribution System

Our system uses free chlorine in the distribution system.

- a. Frequency: Disinfectant residual is measured once per day.
- b. Location: The residual for the entry point is measured at the sample tap on the pressure storage tank inside the pump house.
- c. Method: Chlorine is measured using a Hach Colorimeter.
- d. Compliance calculations: The system is in compliance if the free chlorine residual entering the distribution system is over 0.2 mg/L.

2. Organic Chemicals, Inorganic Chemicals, and Radiochemicals

- a. Frequency: The TCEQ's sampling contractor collects these samples.
- b. Location: The contaminant concentrations for the entry point are measured at the sample tap on the pressure storage tank.
- c. Method: Samples are sent to a certified lab (LCRA) by the TCEQ's sampling contractor.
- d. Compliance calculations: If the concentrations of contaminants are less than the regulatory maximum contaminant levels, our system is in compliance. The TCEQ will inform us of violations. Copies of any letters informing us of violations will be attached in the back of this monitoring plan.

3. Chlorine Dioxide

We don't use chlorine dioxide.

4. Chlorite

We don't use Chlorine dioxide.

5. Bromate

We don't use ozone.

D. DISTRIBUTION SYSTEM SAMPLING

The distribution system consists of 60 connections. The system has one well. The water is disinfected with free chlorine. The chlorinated water is stored in an above ground storage tank and a pressure tank. The water then is pumped out to the connections in the system.

1. Coliform Samples

- a. Frequency: We collect one coliform sample per month and take it to the UGRA lab in Kerrville to have it analyzed. (See copy of form attached at end of the Monitoring plan). We rotate through the sample sites below.
- b. Location: The sample is taken in rotation from the outside tap at the following addresses.
 - i. 123 Trampar Trail *sample YF in Ceramic Sump Left of Flap door*
 - ii. 788 FM 480 *White YF by meter*
 - iii. 158 Verde Park Blvd *Ayers YF along driveway*
 - iv. 230 Verde Park Blvd *Acacia Flap Tank Lot YF MID-TANK*
 - v. 235 Verde Park Blvd *Stor-Hawk Lot*
- c. Method: Coliform samples are taken to a nearby lab: Upper Guadalupe River Authority Laboratory
125 Lehmann
Kerrville, Texas 78028 1-830/896-5445

*updated
12/08*

d. Compliance calculations: The system is in compliance if:

- no repeat samples are fecal or E. coli positive,
- no repeat following a fecal or E. coli positive routine sample is positive for total coliform,
- no more than one of the routine samples are total coliform positive and none of the repeats are fecal or E. coli positive.

2. Disinfectant Residual-Free Chlorine

a. Frequency: The disinfectant residual is measured at the same time as microbial samples. The disinfectant residual is also measured once every seven days, rotating through the sample sites.

b. Location: The disinfectant residual is measured at the same place the microbial sample is taken, plus four additional sites representing the whole distribution system.

c. Method: Chlorine is measured using a Hach Cat. No. 21988 Chlorine - DPD Method

d. Compliance calculations: The system is in compliance with the minimum residual requirement if the free chlorine residual throughout the distribution system is always greater than 0.2 mg/L. The system is in compliance with the maximum residual disinfectant level (MRDL) if the running annual average of all samples taken in the distribution system is less than 4.0 mg/L.

3. Disinfection Byproducts (DBPs) - TTHM and HAA5

a. Frequency: The TCEQ's sampling contractor collects these samples.

b. Location: The sample is collected from the outside tap at 180 Cedar Springs Road.

c. Method: Samples are taken to a certified lab by the TCEQ's sampling contractor.

d. Compliance calculations: The system is in compliance if the running annual average of all samples is less than the maximum contaminant level. The TCEQ will notify us of any violation.

4. Lead-Copper

TCEQ will inform us when or if to perform test.

5. Asbestos

We don't have any asbestos pipe.

6. Chlorine Dioxide

We don't use chlorine dioxide.

7. Chlorite

We don't use chlorine dioxide.

E. LAB APPROVAL FORM

A copy of our Monthly Operations Report is attached as an appendix to this monitoring plan.

OPERATIONS & MAINTENANCE MANUAL

**For
Verde Park Estates Water system, PWS 1330027**

Owned & operated by:

Wiedenfeld Water Works, Incorporated

April 2016

**Plant Location: 235 Verde Park Blvd.; Center Point, Texas 78010
Wellsite 234 Verde Park Blvd
Verde Park water system serves approx. 68 customers**

A. RAW WATER SOURCES

The subject Verde Park Estates Park PWS uses a single production plant facility to provide potable water within the service area CCN. The potable water source is from a single active groundwater supply well.

The well's operation is controlled by one float switch in adjacent ground storage tank(s). Floats are set for approx. 18" of pump operation between on & off. The wells can also be turned on manually at the tank. The manual switch is needed to check the well during monthly routine checks. If the well does not operate with the manual switch on, then a check of the breaker, and/or starter resets, at the well location, should be done. In the event of pump failure, contact Kerr Country Pump Company to evaluate the pump malfunction.

B. TREATMENT PLANT DESCRIPTION & DESIGN

The produced water is treated with a disinfectant for biological control and a sequestering agent to control discoloration by the high iron content. A free residual should be maintained between 1 & 1.5 mg/l at the plant and this will allow for residuals at the end of lines to be above state requirements.

C. PLANT DESIGN, CAPACITIES & OPERATIONS

The remaining plant facilities consists of the ground storage, pressure pumps and tanks, and the Distribution system. Each are described herein and further by attached record drawings.

OPERATIONS & MAINTENANCE MANUAL

1. CAPACITIES (a/o Apr/2016)

	TCEQ	WWW	%
a. Customer accounts = 68 (active)	41	52	127
b. Well capacity (0.6 gpm)	13,600	56,000	412
c. Storage (200gal/cust)	4,200	18,000	429
d. Elevated storage (200 gal/cust-21)	420	1,920	457
e. Pressure tank (20 gal/cust-21)	42	160	381

2. PHYSICAL STRUCTURES (mapping attached)
 - a. Storage facilities
 - b. Pressure pumps
 - c. Pressure tanks
 - d. Electrical Service & Controls

Two pressure planes exists with approx. 21 customers connected to the hydropneumatic tanks. The remaining customer are supplied from the elevated storage. The pressure (booster) pumps are each controlled by a pressure switch located at or in the piping to the pressure tank. They are set to operate automatically between 45 (cut-on) and 55psi (cut-off) pressures. The pumps can be manually operated at the pressure control switch. The pumps are further protected from an empty storage tank with a "low-level shut-off" float switch. These can be overridden in an emergency by lifting the float upright.

3. ELECTRICAL & CONTROLS

Electrical supply, single phase is provided by Kerrville Public Utility Board for the plant at 235 Verde Park Blvd. (Acct 53403007). A second account (53403011) for the well-site, 234 Verde Park. A phase convertor is used to supply 3 phase electrical energy for the well. Service to electrical controls, breaker panels, etc is provided by Kerr Country Pump. The electric meters and Main disconnects are located on power poles within intruder resistant fencing around the plant site with a breaker panel located inside the pumphouses. A main breaker turns off all of the power inside the plant, and several smaller breakers to turn off individual pumps, air compressor, lights, and other electrical outlets. The well and pressure pump motor starters and controls are mounted on the walls inside pumphouses. All pumps, motors, and chemical feed pumps can be manually or automatically turned on and off at the main panel. It contains relays, alternator, and manual-off-auto switches.

OPERATIONS & MAINTENANCE MANUAL

START UP PROCEDURES

If for any reason the system has been off line or down, the steps for startup of the plant are as follows:

- 1) Turn all switches on the main control panel to the OFF position.
- 2) Check the main power source from the electrical company.
- 3) Check all the breakers to be properly reset to ON position.
- 4) Check and reset all motor starter resets.
- 5) At the main control panel turn the well switch to ON. The well and chemical feed pumps should start at this time.
- 6) At the main control panel turn either of the Booster Pump Switches to the ON position. The pump that was turned to the ON position should start if the storage tank level is above the suction line. Starting the pump will cause the water level and pressure to build in the pressure tank. If the tank does not have enough level, then wait until it does and the Booster Pump will start.
- 7) When the Booster Pump builds enough pressure in the pressure tank it will shut off.
- 8) At this time all switches should be in the ON position on the main control panel, and the plant should be back to complete automatic operation.
- 9) All flush valves need to be opened one or two at a time. They should be run until all air is removed from the distribution system, and a free chlorine residual of at least 0.5 mg/l is obtained at the last tap.

Maintenance Schedules

Daily

- 1) Analyze record and report free chlorine residual from one of the approved sampling sites.

Weekly

- 1) Read well water meter once a week and record usage.
- 2) Check disinfectant & sequestering agent levels in day-tank and record.
- 3) Collect and record disinfectant residual in distribution using the sites noted on the monitoring plan.
Check pressure pumps for proper operation.
Check air/water controller for maintaining proper levels in pressure tank.

Monthly

- 1) Collect two (2) microbiological samples; one from a well and labelled as a "Raw" sample, the other from a site in accordance with the Verde Park Estates monitoring plan (attached), labelled as a "Distribution sample" for analysis by a TCEQ approved/accredited laboratory. WWWInc utilizes the UGRA Lab- Kerrville and the Kendall County WCID-Comfort.
 - a) prior to collecting in a 125 ml sterile container, disinfect sampling point tap and check chlorine residual.
 - b) Run water from tap slowly while filling the sample to lip of container
 - c) Complete coliform sample report form.
 - d) Put sample on ice for several hours or until sample temperature is less than 40 degrees before submitting to lab.

OPERATIONS & MAINTENANCE MANUAL

- 2) Mow and clean the outside of the plant building which includes, but is not limited to clearing the fence of any undergrowth and any other general facility cleanup.
- 3) Flush "dead-ends" and report estimated gallonage on operations report.
- 4) Finalize, sign and submit the monthly operating report to the WWW office staff.

Annually

- 1) Clean & remove sediment in storage tanks, complete the annual tank inspections and inspection forms.
- 2) Check the wellhead and the well sealing block for any cracks and/or needed caulking.
- 3) Check and replace the screens on the well vent, tank vents, etc.
- 4) Check fencing for providing proper security.

Biannually

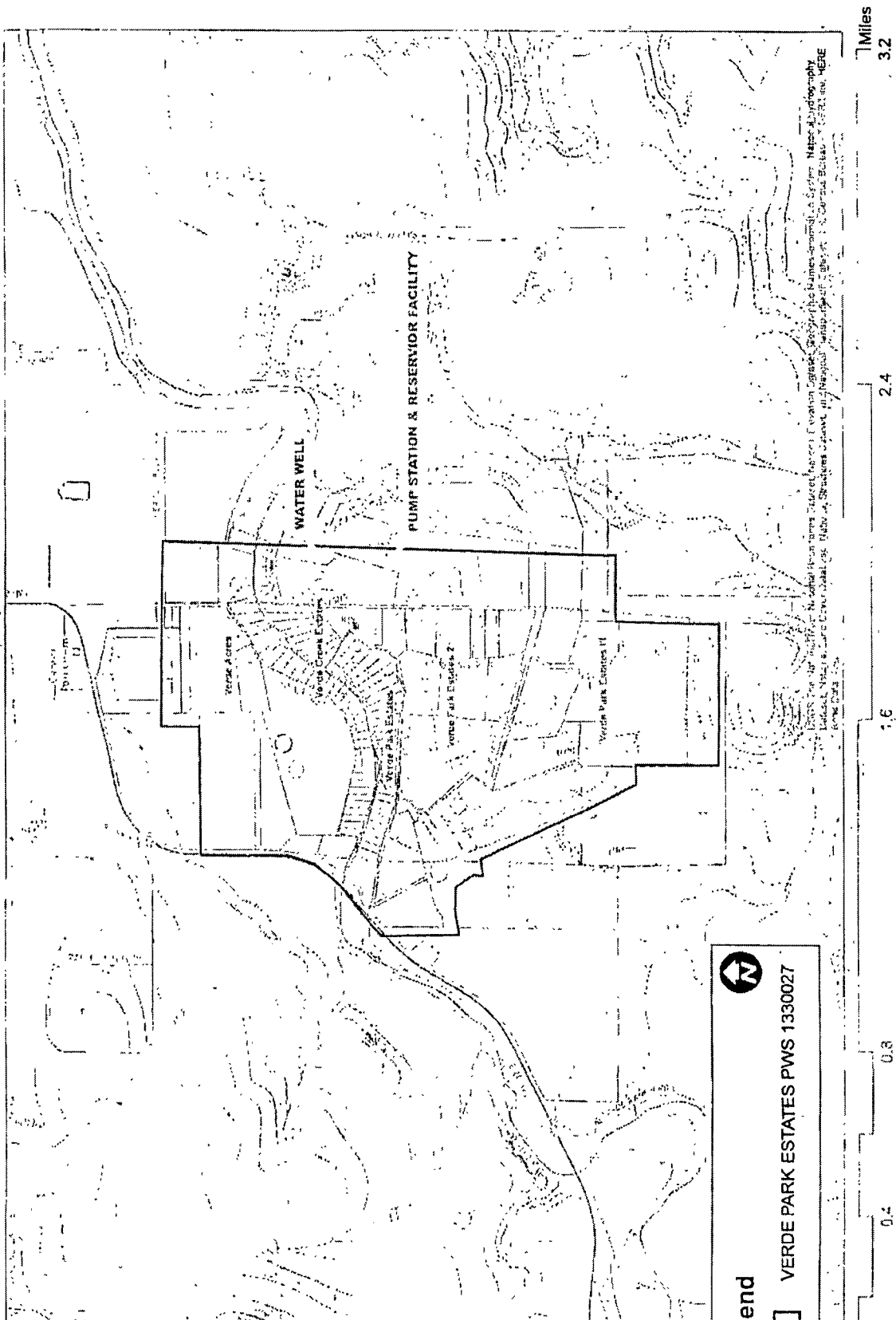
- 1) Calibrate well meters

EMERGENCY CONTACTS

- 1) Well & Pressure Pump problems: Kerr Country Pump, 1157 Sidney Baker -
Kerrville
Office; 830-257-4107; fax 792-4342
Greg cell: 830-739-2350
Jerry; 830-739-0050
Vince; 830-370-6132
- 2) Electrical Supply problems:
Kerrville Public Utility Board; 830-257-3050
- 3) Emergencies by Disasters, fire, hazardous material spills, medical/health; call
911
- 4) Non-emergency; ie Vandalism, theft, etc;
- Kerr County Sheriff's Dept.: phone 830-896-1133
- City of Kerrville Fire Dept. 830-257-8449
- Center Point Voluntary Fire Department; phone 1-830-634- 2323

RECORDS

All business and records, etc. are kept at Wiedenfeld Water Works, Inc offices located at
133 CP River Rd., Center Point, Texas 78010.



Bryan W. Shaw, Ph.D., P.E., *Chairman*
 Toby Baker, *Commissioner*
 Jon Niermann, *Commissioner*
 Richard A. Hyde, P.E., *Executive Director*



PWS_1330027_CO_20161003_Plan Ltr

TEXAS COMMISSION ON ENVIRONMENTAL QUALITY

Protecting Texas by Reducing and Preventing Pollution

October 3, 2016

RECEIVED

OCT -6 2016

Mr. Tim Williford
 Southwest Water Company
 1620 Grand Avenue Parkway
 Pflugerville, Texas 78660

TXU - AP

Re: Verde Park Estates - Public Water System ID No. 1330027
 85% Capacity Rule Notification
 Contact Telephone: (512) 252-8782
 Plan Review Log No. P-08032016-034
 Kerr County, Texas

CN: 600650725; RN: 101210961

Dear Mr. Williford:

On August 3, 2016, the Texas Commission on Environmental Quality (TCEQ) received your letter dated August 1, 2016 submitting the 85% capacity report. This report satisfies the requirements of Chapter 291.93(3) of the Rules.

The submittals included the following information:

Existing Active Connections: 68
 Elevated Connections: 47
 Hydro-Tank Connections: 21

System Component-	Required Capacity*	Actual Capacity	85% Capacity/Current Capacity
Wells	41 g.p.m.	54 g.p.m.	46 g.p.m. (76%)
Booster Pumps	42 g.p.m.	60 g.p.m.	46 g.p.m. (70%)
Elevated Tanks	4,700 gal	18,000 gal	15,000 gal (26%)
Ground Storage Tanks	13,600 gal	36,000 gal	30,600 gal (38%)
Hydropneumatic Tanks	420 gal	1,920 gal	1,632 gal (22%)

Per the report provided build-out improvements shall be done as connections come on-line. Plans and specifications must be submitted prior to construction from a licensed professional engineer (P.E.) for any future improvements according to the TCEQ's Chapter §290 - Rules and Regulations for Public Water Systems (Rules).

The Verde Park Estates public water supply system provides water treatment.

P.O. Box 13087 • Austin, Texas 78711-3087 • 512-239-1000 • tceq.texas.gov

How is our customer service? tceq.texas.gov/customersurvey

printed on recycled paper using vegetable based ink

Mr. Tim Williford
Page 2
October 3, 2016

An appointed engineer must notify the TCEQ's Region 13 Office in San Antonio at (210) 490-3096 when construction will start. Please keep in mind that upon completion of the water works project, the engineer or owner will notify the commission's Water Supply Division, in writing, as to its completion and attest to the fact that the completed work is substantially in accordance with the plans and change orders on file with the commission as required in 30 TAC §290.39(h)(3).

Please refer to the Plan Review Team's Log No. P-08032016-034 in all correspondence for this project.

Please Note: In order to determine if a new source of water or a new treatment process results in corrosive or aggressive finished water that may endanger human health, we are requesting additional sampling and analysis of lead, alkalinity (as calcium carbonate), calcium (as calcium carbonate) and sodium in addition to the required chemical test results for public water system new sources. We are requiring these additional sampling results as listed in our currently revised checklists (Public Well Completion Data Checklist for Interim Use - Step 2 and Membrane Use Checklist - Step 2) which can be found on TCEQ's website at the following address:

<https://www.tceq.texas.gov/drinkingwater/udpubs.html>

Please include these additional sampling results in well completion submittals, membrane use submittals, and other treatment process submittals.

New surface water sources will need to also include lead, total dissolved solids, pH, alkalinity (as calcium carbonate), chloride, sulfate, calcium (as calcium carbonate) and sodium with the analysis required in 30 TAC Section 290.41(e)(1)(F).

Please complete a copy of the most current Public Water System Plan Review Submittal form for any future submittals to TCEQ. Every blank on the form must be completed to minimize any delays in the review of your project. The document is available on TCEQ's website at the address shown below. You can also download the most current plan submittal checklists and forms from the same address.

<https://www.tceq.texas.gov/drinkingwater/udpubs.html>

For future reference, you can review part of the Plan Review Team's database to see if we have received your project. This is available on TCEQ's website at the following address:

<https://www.tceq.texas.gov/drinkingwater/planrev.html/#status>

You can download the latest revision of 30 TAC Chapter 290 - Rules and Regulations for Public Water Systems from this site.

Mr. Tim Williford
Page 3
October 3, 2016

If you have any questions please contact Brian D. Dickey at (512)239-0963 or by email at brian.dickey@tceq.texas.gov or by correspondence at the following address:

Plan Review Team, MC-159
Texas Commission on environmental Quality
P.O. Box 13087
Austin, Texas 78711-3087

Sincerely,



Vera Poe, P.E., Team Leader
Plan Review Team
Plan and Technical Review Section
Water Supply Division
Texas Commission on Environmental Quality

VP/BDD/av

cc: Verde Park Estates, 1620 Grand Avenue Pkwy Ste 140, Pflugerville, TX 78660-2185

Bryan W. Shaw, Ph.D., P.E., *Chairman*
Toby Baker, *Commissioner*
Jon Niermann, *Commissioner*
Richard A. Hyde, P.E., *Executive Director*



PWS_1330134_CO_20161205_Plan Ltr

TEXAS COMMISSION ON ENVIRONMENTAL QUALITY

Protecting Texas by Reducing and Preventing Pollution

December 5, 2016

RECEIVED

DEC 10 2016

TXU - AP

Mr. Joe F. Torralva
Wiedenfeld Water Works, Inc.
1620 Grand Avenue Parkway, Ste. 140
Pflugerville, TX 78660

Re: Oak Ridge Estates Water System - Public Water System ID No. 1330134
85% Capacity Report
Engineer Contact Telephone: (512) 219-2260
Plan Review Log No. P-10062016-027
Kerr County, Texas

CN600650725; RN101284438

Dear Mr. Torralva:

On October 6, 2016, the Texas Commission on Environmental Quality (TCEQ) received your 85% capacity report.

The report indicates 41 existing connections, which results in existing well capacity at 50%, existing ground storage tank capacity at 82%, existing pressure tank capacity at 91% and existing booster pump capacity at 82%.

The report indicates 48 ultimate connections, which would result in well capacity at 58%, ground storage tank capacity at 96%, pressure tank capacity at 106% and booster pump capacity at 96%.

Your action plan consists of the following:

- Pump improvements in "2017".
- Pressure tank improvements "in the future".

Please be modify action plan as needed as connections are added.

Please submit plans and specifications prior to construction.

The Oak Ridge Estates Water System public water system provides treatment.

Mr. Joe F. Torralva
Page 2
December 5, 2016

An appointed engineer must notify the TCEQ's Region 13 Office in San Antonio at (210) 490-3096 when construction will start. Please keep in mind that upon completion of the water works project, the engineer or owner will notify the commission's Water Supply Division, in writing, as to its completion and attest to the fact that the completed work is substantially in accordance with the plans and change orders on file with the commission as required in 30 TAC §290.39(h)(3).

Please refer to the Plan Review Team's Log No. P-10062016-027 in all correspondence for this project.

Please Note: In order to determine if a new source of water or a new treatment process results in corrosive or aggressive finished water that may endanger human health, we are requesting additional sampling and analysis of lead, alkalinity (as calcium carbonate), calcium (as calcium carbonate) and sodium in addition to the required chemical test results for public water system new sources. We are requiring these additional sampling results as listed in our currently revised checklists (Public Well Completion Data Checklist for Interim Use - Step 2 and Membrane Use Checklist - Step 2) which can be found on TCEQ's website at the following address:

<https://www.tceq.texas.gov/drinkingwater/udpubs.html>

Please include these additional sampling results in well completion submittals, membrane use submittals, and other treatment process submittals.

New surface water sources will need to also include lead, total dissolved solids, pH, alkalinity (as calcium carbonate), chloride, sulfate, calcium (as calcium carbonate) and sodium with the analysis required in 30 TAC Section 290.41(e)(1)(F).

Please complete a copy of the most current Public Water System Plan Review Submittal form for any future submittals to TCEQ. Every blank on the form must be completed to minimize any delays in the review of your project. The document is available on TCEQ's website at the address shown below. You can also download the most current plan submittal checklists and forms from the same address.

<https://www.tceq.texas.gov/drinkingwater/udpubs.html>

For future reference, you can review part of the Plan Review Team's database to see if we have received your project. This is available on TCEQ's website at the following address:

<https://www.tceq.texas.gov/drinkingwater/planrev.html/#status>

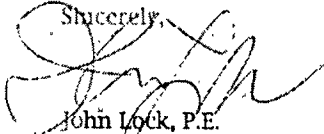
You can download the latest revision of 30 TAC Chapter 290 - Rules and Regulations for Public Water Systems from this site.

Mr. Joe F. Torralva
Page 3
December 5, 2016

If you have any questions, please contact John Lock at (512)239-4710 or by email at john.lock@tceq.texas.gov or by correspondence at the following address:

Plan Review Team, MC-159
Texas Commission on Environmental Quality
P.O. Box 13087
Austin, Texas 78711-3087

Sincerely,



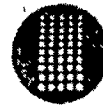
John Lock, P.E.
Plan Review Team
Plan and Technical Review Section
Water Supply Division
Texas Commission on Environmental Quality



Vera Poe, P.E., Team Leader
Plan Review Team
Plan and Technical Review Section
Water Supply Division
Texas Commission on Environmental Quality

VP/JL/av

cc: SWWC, 1620 Grand Avenue Pkwy., Ste 140, Pflugerville, TX 78660



**Wlodenfeld
Water Works, Inc.**

A SouthWest Water Company

Customer Service
866.654.SWWC (7992)

October 6, 2016

Texas Commission on Environmental Quality (TCEQ)
% Ms. Vera Poe
Plan Review Team, MC 159
PO Box 13087, Austin, TX 78711-3087

RE: Oak Ridge Estates, Kerr County, Texas
Regulated Entity No.: RN101284438, TCEQID No.: 1330134
Investigation: 1338714
Additional Issues Item 3

Dear Ms. Poe,

In accordance with 30 Texas Administrative Code 291.93(3)(c), transmitted herewith the 85% capacity planning report for the above reference water system owned and operated by Wlodenfeld Water Works, Inc.

The San Antonio Regional Office will receive the report via electronic correspondence on October 6, 2016. Please feel free to contact me if you have any questions

Sincerely,

Joe P. Torralva

Design and Construction Manager, Texas Utilities | SouthWest Water Company
1620 Grand Avenue Parkway, STE 140 | Pflugerville, Texas 78660
Tel: 512-219-2260 | Fax: 512-219-2298
E-mail: jtoralva@swwc.com

JFT/jft

CC Tim Williford

ELECTRONIC COPY

Technical Memorandum

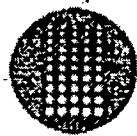
OAK RIDGE ESTATES WATER SYSTEM

Public Water System ID No. 1330134

CCN No. 12052

September 30, 2016

Prepared By:



**SouthWest
Water Company**

12535 Reed Road
Sugar Land, TX 77478
(281) 207 – 5800

ELECTRONIC COPY



**SouthWest
Water Company**

SWWC Utilities, Inc.
12535 Reed Road
Sugar Land, TX 77478
Phone 281.207.5800
Fax 281.207.5940
www.swwc.com

TABLE OF CONTENTS

Introduction	1
Existing Conditions	2
Anticipated Ultimate Conditions	3
Proposed Improvements	4
Conclusion	4

ELECTRONIC COPY**INTRODUCTION**

Oak Ridge Estates ("the District"), Public Water System ID No. 1330134 is an existing public water system located in central Kerr County, Texas, approximately .25 miles Northeast of Center Point, Texas, and is bounded by Stoneleigh Road on the south. Total area is approximately 21.6 acres. The District currently provides potable water service to 41 equivalent single family connections ("ESFC's") under Certificate of Convenience and Necessity No. 12052, and is owned, operated, and maintained by SouthWest Water Company ("SWWC", TCEQ Reference Number CN600861702). A Location and Service Area Map for the District is provided herein as Appendix A.

On September 30, 2016, SWWC completed a comprehensive analysis of the District's existing water supply, storage, and distribution facilities. The intent of this analysis was to identify any current facility deficiencies from a regulatory and operational perspective, and at the same time evaluate the adequacy of those facilities to serve anticipated future growth as well as the ultimate capacity of the District's service area (see Appendix A). This document is further intended to serve as the TCEQ 85% Capacity Report as specified by 30 TAC §291.93(f)(3).

EXISTING CONDITIONS

The District's primary source of water is ground water supplied by one water well (well) from the Middle Trinity Aquifer hydrological unit. The ground water is transferred by submersible pump via on-site pipe line from well to the District's existing Treatment Plant No. 1, where the raw water is treated, disinfected, stored, and ultimately delivered under pressure to the existing water distribution system for customer consumption.

The District's existing water supply, storage, and distribution system consists of the following components:

1. One (1) 50 gpm water well with a 7.5 HP submersible water pump.
2. One (1) 5,000 gallon bolted steel storage tank, contributing to a total storage capacity of 10,000 gallons.
3. One (1) 5,000 gallon fiberglass storage tank, contributing to a total storage capacity of 10,000 gallons.
4. Two (2) 2 HP close-coupled booster pumps, providing a firm pumping capacity of 50 gpm (with the largest booster pump out of service).
5. One (1) welded steel hydro pneumatic tanks, providing a total pressure tank capacity of 900 gallons.
6. One (1) liquid chlorine disinfection system, fully functional and complete with all necessary and required equipment, piping, and appurtenances.

As of the date of this report, the District currently provides potable water service to 41 active ESFC's. Table 1, below, illustrates the District's actual existing water system capacities, and compares them to the TCEQ's Minimum Water System Capacity Requirements as specified by 30 TAC §290.45, as well as to the system's 85% Capacity as specified by 30 TAC §291.93(f)(3).

ELECTRONIC COPY**TABLE 1: ANALYSIS OF EXISTING WATER SYSTEM CAPACITIES**

District Name: Oak Ridge Estates
 Existing Active ESFC's: 41

TCEQ Minimum Water System Capacity Requirements per 30 TAC §290.45:

Well: 0.6 gpm/ESFC
 Booster Pumps: 2.0 gpm/ESFC
 Ground Storage Tanks: 200.0 gal/ESFC
 Hydropneumatic Tanks: 20.0 gal/ESFC

TOTAL EXISTING SYSTEM CAPACITY

System Component	Actual Existing Capacity	Required Min. Capacity	85% Capacity	Rated Capacity (ESFC's)
Well	46 gpm	25 gpm	39 gpm	76.67
Booster Pumps ⁽¹⁾	50 gpm	82 gpm	43 gpm	25
Ground Storage Tanks	10,000 gal	8,200 gal	8,500 gal	50
Hydropneumatic Tanks	900 gal	820 gal	765 gal	45

(1) The actual existing booster pump capacity is the firm pumping capacity with the largest pump out of service.

As indicated above, all system components, less the booster pump capacity, are in regulatory compliance.

ANTICIPATED ULTIMATE CONDITIONS

An analysis of the District's recorded plat and current service area boundary reveals that, at this time, there are 45 developed residential lots, with no residential lots remaining to be developed.

As noted above, the District currently provides potable water service to 41 active ESFC's. The District is built-out and will not grow to adjoining tracts over time. Table 2, below, summarizes the current and the anticipated ultimate water demand in terms of ESFC's.

ELECTRONIC COPY

1

TABLE 2: EQUIVALENT SINGLE FAMILY CONNECTIONS

Connection Type	Current	Anticipated Future
Single Family Residential	41	48
Multi Family Residential		
Commercial		
Industrial		
Schools		
Churches		
Other		
TOTAL	41	48

Thus, the District will serve the build-out connection count of 48 ESFC's.

Bearing the above data in mind, an analysis of the District's anticipated future water demand was performed. Table 3, below, illustrates the District's actual existing water system capacities, and compares them to the anticipated ultimate required minimum water system capacities, as specified by 30 TAC §290.45, as well as to the system's ultimate 85% Capacity, as specified by 30 TAC §291.93(f)(3).

TABLE 3: ANALYSIS OF REQUIRED ULTIMATE WATER SYSTEM CAPACITIES

District Name: Oak Ridge Estates
Build-out ESFC's: 48

TCEQ Minimum Water System Capacity Requirements per 30 TAC §290.45:

Well: 0.6 gpm/ESFC
Booster Pumps: 2.0 gpm/ESFC
Ground Storage Tanks: 200.0 gal/ESFC
Hydropneumatic Tanks: 20.0 gal/ESFC

ANTICIPATED ULTIMATE SYSTEM CAPACITY REQUIREMENTS

System Component	Actual Existing Capacity	Required Ult. Min. Capacity	Ult. 85% Capacity	Rated Capacity (ESFC's)
Well	50 gpm	29 gpm	24 gpm	83.33
Booster Pumps ⁽¹⁾	50 gpm	96 gpm	82 gpm	25
Ground Storage Tanks	10,000 gal	9,600 gal	8,160 gal	50
Hydropneumatic Tanks	900 gal	960 gal	816 gal	45

(1) The actual existing booster pump capacity is the firm pumping capacity with the largest pump out of service.

ELECTRONIC COPY

As indicated above, all water system, components, less the booster pump capacity and hydro-tank, are in regulatory compliance. In future, we will budget capital to replace the existing hydro-tank with a larger component.

PROPOSED IMPROVEMENTS

Based upon the analysis provided, it shall be required to remove and replace the existing 2-HP pump and replace with a suitable pump array that will satisfy 100 gpm aggregate capacity with largest pump out of service. We shall recommend the pump improvements project be added to the capital budget for 2017.

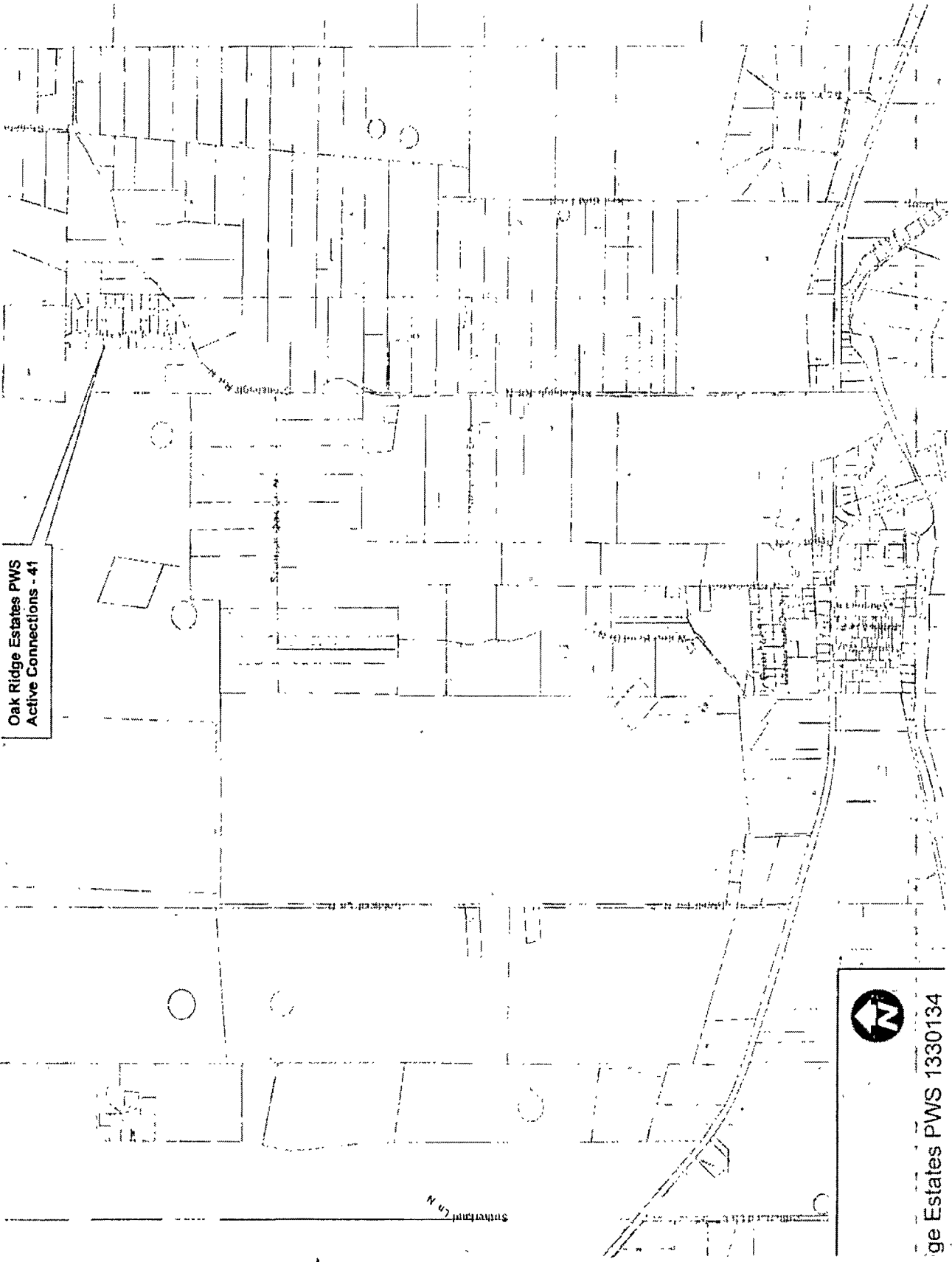
CONCLUSION

In conclusion— we recommend the following:

- (1) Remove and replace existing booster pump with a suitable booster pump array to meet or exceed 2 gpm per connection with largest pump out of service.

ELECTRONIC COPY

APPENDIX A



Oak Ridge Estates PWS
Active Connections - 41



ge Estates PWS 1330134

DOCKET NO. 46494

**RESPONSES OF WWW AND SWWC TO
STAFF'S FIRST REQUESTS FOR INFORMATION
QUESTION NOS. STAFF 1-1 THROUGH 1-3**

STAFF NO. 1-2: For the Cedar Springs water system, please describe the work needed to extend the height of the well casing.

- Has the applicant submitted plans and specifications to the TCEQ regarding this issue?
- If so, what was the TCEQ's response?
- What is the progress on this work?

RESPONSE: The work done at the Cedar Springs well was welding of additional casing to the existing casing, to extend it to the required height above the slab.

- WWW has not submitted plans and specifications to TCEQ, as Texas Administrative Code Title 30, Chapter 290 does not require plans and specifications to be submitted for this type of repair work.
- N/A
- Work is completed - see Attachment Staff 1-2, which is a copy of the verification submitted to the TCEQ.

Prepared by: George Freitag, P.E.
Sponsored by: George Freitag, P.E.

Timothy Williford

From: Timothy Williford
Sent: Thursday, October 06, 2016 12:41 PM
To: 'Colby Maron'
Cc: Albert Amezcuita
Subject: Cedar Springs Investigation Response - Investigation #1336771
Attachments: 2016-10-06-075453.jpeg; 2016-10-06-075459.jpeg

Colby,

Please see attached photos of the Cedar Springs wellhead. As you can see, it has been raised more than 18" above the floor.

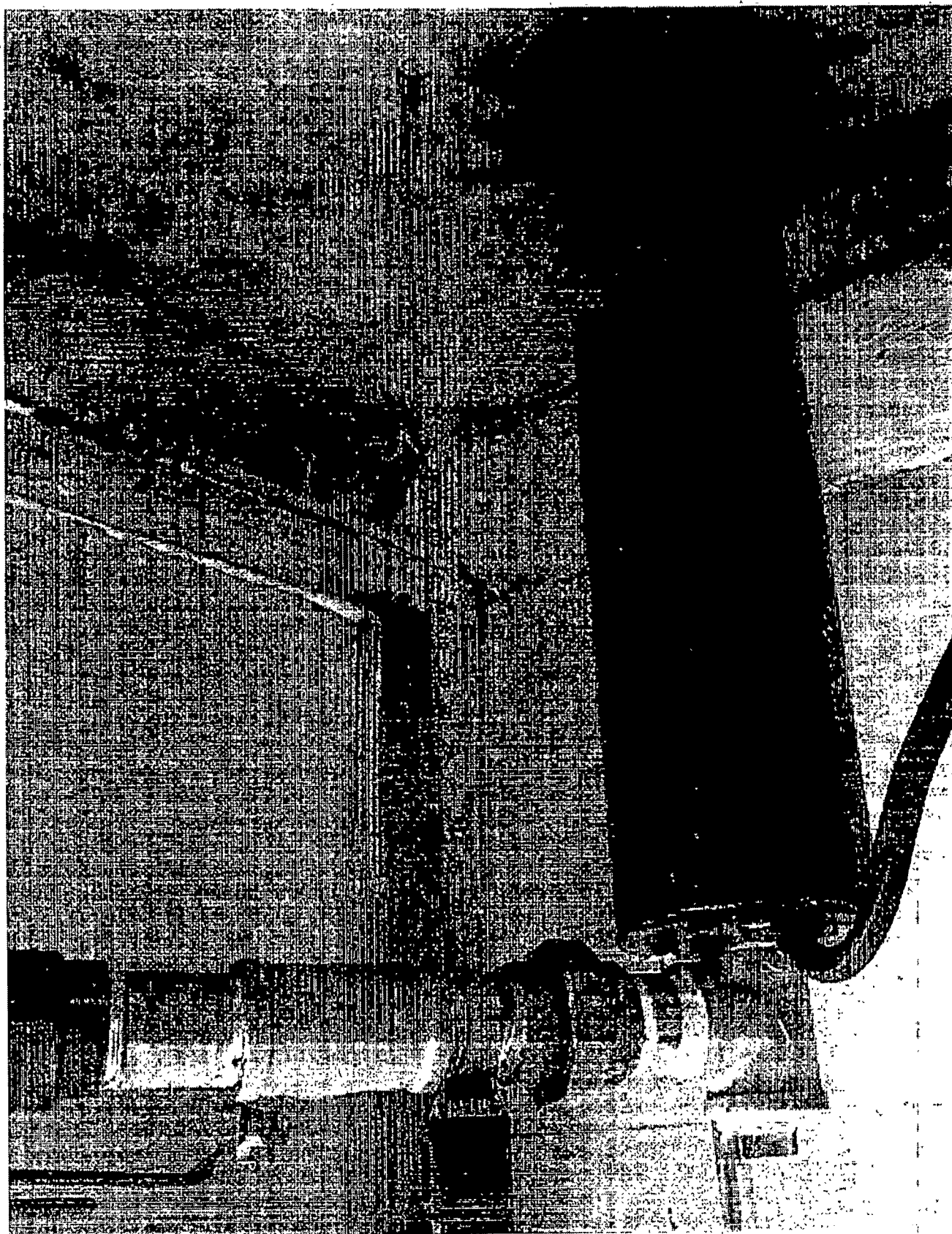
We are having the slab redone also. Once it is complete, we will provide you photos of the slab/wellhead. We should have the photos early next week.

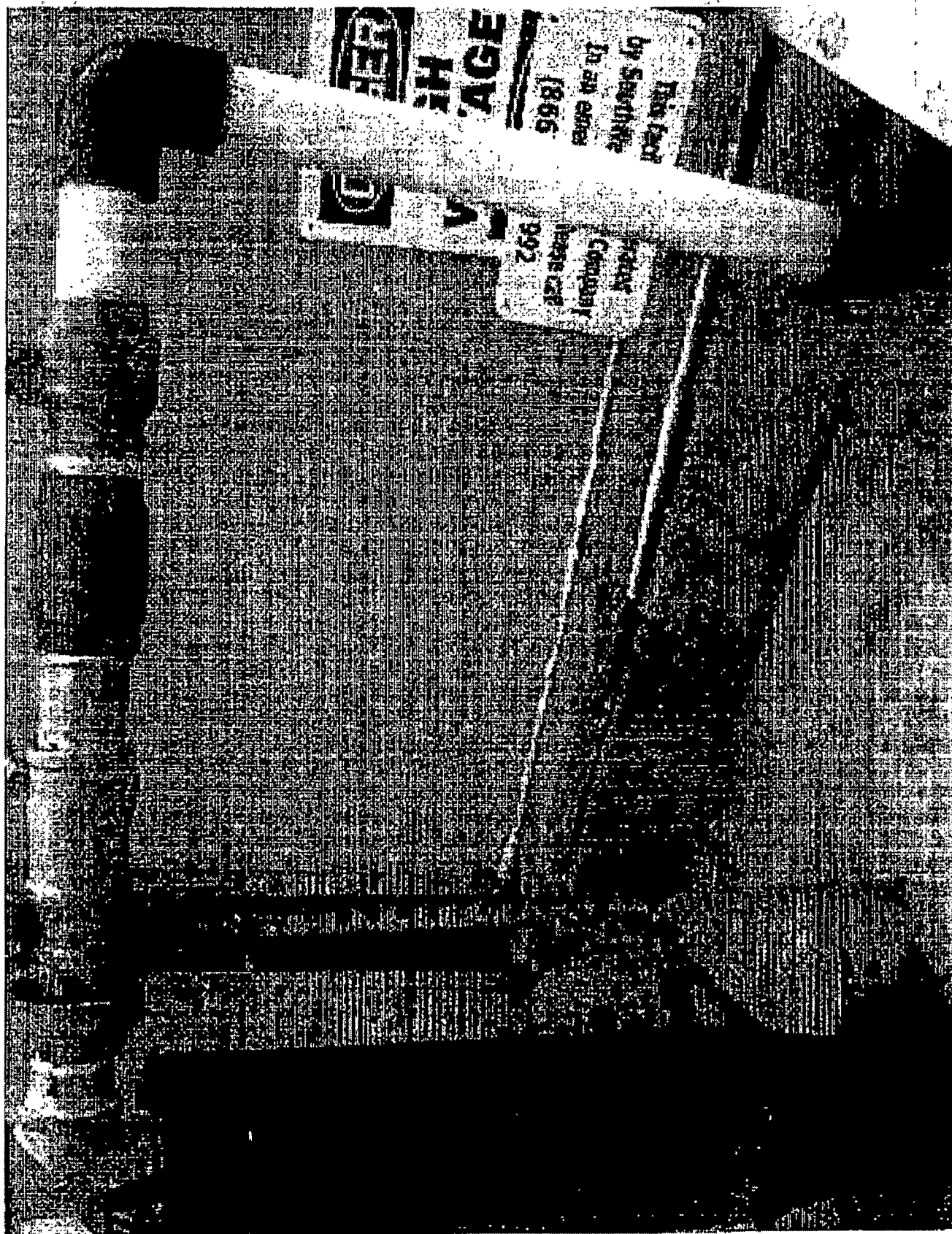
Thanks,

Tim Williford, CSHO
Environmental Health & Safety Manager | Texas Utilities
1620 Grand Avenue Parkway, Suite 140 | Pflugerville, TX 78660
Phone 512.219.2294 | Fax 512-252-8782
Cell 512.784.1632 | E-mail twilliford@swwc.com
Visit us at www.swwc.com



**SouthWest
Water Company**





DOCKET NO. 46494

**RESPONSES OF WWW AND SWWC TO
STAFF'S FIRST REQUESTS FOR INFORMATION
QUESTION NOS. STAFF 1-1 THROUGH 1-3**

STAFF NO. 1-3: Please provide the latest inspection report for Cedar Springs MHV, Cedar Point, Heritage Park, Hills and Dales, Oak Ridge Estates, Verde Park Estates, Vista Hills, Westwood, Windwood Oaks Subdivision, Woodhaven MHP Platten Creek Water.

RESPONSE: Attachment Staff 1-3 are the latest inspection letters for Cedar Springs MHV, Cedar Point, Heritage Park, Hills and Dales, Oak Ridge Estates, Verde Park Estates, Vista Hills, Westwood, Windwood Oaks Subdivision, Woodhaven MHP, and Platten Creek Water.

Prepared by: George Freitag, P.E.
Sponsored by: George Freitag, P.E.

Bryan W. Shaw, Ph.D., P.E., *Chairman*
Toby Baker, *Commissioner*
Jon Niermann, *Commissioner*
Richard A. Hyde, P.E., *Executive Director*



RECEIVED

JUN 27 2016

TXU - AP

TEXAS COMMISSION ON ENVIRONMENTAL QUALITY

Protecting Texas by Reducing and Preventing Pollution

June 23, 2016

CERTIFIED MAIL NO.: 91 7199 9991 7036 0226 8426
RETURN RECEIPT REQUESTED

Mr. Raymond Wiedenfeld, President
Wiedenfeld Water Works, Inc.
P. O. Box 418
Center Point, Texas 78010-0418

Re: Notice of Violation for Compliance Evaluation Investigation at:
Cedar Springs Mobile Home Village, Kerr County, Texas
Regulated Entity No.: RN101215291, TCEQ ID No.: 1330019
Investigation: 1336771

Dear Mr. Wiedenfeld:

On April 25-26, 2016, Mr. Colby Maron of the Texas Commission on Environmental Quality (TCEQ) San Antonio Region Office conducted an investigation of the above-referenced regulated entity to evaluate compliance with applicable requirements for a public water supply. Enclosed is a summary which lists the investigation findings. During the investigation, an outstanding alleged violation was identified for which compliance documentation is required. Please submit to this office by October 6, 2016 a written description of corrective action taken and the required documentation demonstrating that compliance has been achieved for the outstanding alleged violations.

In the listing of the alleged violations, we have cited applicable requirements, including TCEQ rules. Please note that both the rules themselves and the agency brochure entitled Obtaining TCEQ Rules (GI 032) are located on our agency website at <http://www.tceq.state.tx.us> for your reference. If you would like a hard copy of this brochure mailed to you, you may call and request one from either the San Antonio Region Office at (210) 403-4096 or the Central Office Publications Ordering Team at 512-239-0028.

If you or members of your staff have any questions, please feel free to contact Mr. Maron in the San Antonio Region Office at (210) 403-4024.

Sincerely,

A handwritten signature in cursive script, appearing to read "Joy Thurston-Cook".

Joy Thurston-Cook, Water Section Team Leader
San Antonio Region Office

JTC/CM/eg

cc: Mr. Tim Williford, South West Water Company

Summary of Investigation Findings

CEDAR SPRINGS MOBILE HOME VILLAGE

Investigation #

1336771

Investigation Date: 04/25/2016

, KERR COUNTY,

Additional ID(s): 1330019

OUTSTANDING ALLEGED VIOLATION(S)

Track No: 606603

Compliance Due Date: 10/06/2016

30 TAC Chapter 290.41(c)(3)(B)

Alleged Violation:

Investigation: 1336771

Comment Date: 06/08/2016

Failure to provide a wellhead casing with a minimum of 18 inches above the floor within the sealed well enclosure.

At the time of the investigation, the well casing did not extend at least 18 inches above the floor within the sealed well enclosure.

290.41(c)(3)(B)-- The casing material used in the construction of wells for public use shall be new carbon steel, high strength low alloy steel, stainless steel or plastic. The material shall conform to AWWA standards. The casing shall extend a minimum of 18 inches above the elevation of the finished floor of the pump room or natural ground surface and a minimum of one inch above the sealing block or pump motor foundation block when provided. The casing shall extend at least to the depth of the shallowest water formation to be developed and deeper, if necessary, in order to eliminate all undesirable water bearing strata. Well construction materials containing more than 8.0% lead are prohibited.

Recommended Corrective Action: Provide by the compliance due date, a copy of an invoice, completed work order or photograph indicating that the well casing has been extended to at least 18 inches above the elevation of the ground level or request an exception to the requirement from the Technical Review and Oversight Team (TROT) and provide a copy of the granted exception.

Technical Review and Oversight Team
Plan and Technical Review Section, MC-159
Texas Commission on Environmental Quality
P.O. Box 13087
Austin, Texas 78711-3087

ADDITIONAL ISSUES

Description

Item 1

Additional Comments

At the time of the investigation, it was noted that livestock watering troughs and above ground pools were located at residential connections, but the status of backflow and cross-connection prevention could not be determined. The entity must ensure that the potential contamination hazards are evaluated, and if necessary, eliminated or isolated from the public water system.

CEDAR SPRINGS MOBILE HOME VILLAGE**Investigation # 1336771**

Item 2

291.93(3)(c)

Submit an administratively and technically complete report addressing the 85% capacity planning requirement, in accordance with 30 Tex. Admin. Code 291.93. At the time of the investigation, the entity provided 29 GPM of well capacity and 100 GPM of service pump capacity. Based upon 44 connections, the entity is required to provide 26.4 GPM well production capacity and 88 GPM service pump capacity resulting in the water system reaching 91% of its well capacity and 88% of its service pump capacity. The entity must submit to the Texas Commission on Environmental Quality (TCEQ) Plan Review Team, MC 159, PO Box 13087, Austin, TX 78711-3087; (512)239-4691 an 85% planning report that clearly explains how the retail public utility will provide the expected service demands to the remaining areas within the boundaries of its certificated area and submit to the TCEQ San Antonio Region Office documentation verifying submittal.

30 TAC 290.93(3)- After any commission field inspection, a retail public utility must analyze the system's capacity to determine if it has reached 85% of its capacity. If the retail public utility has reached 85% of its capacity, it must file this report no later than 90 days after the date of a commission letter detailing the results of the inspection. Capacity is considered to be the overall rated capacity in number of residential connection equivalents based on the most restrictive criteria for production, treatment, storage, or pumping. The report should be submitted in writing and should contain the following: a brief description of the overall utility system and service area; an analysis of the plant capacity as defined in subparagraph (A) of this paragraph; details on how the retail public utility will provide service to the remaining areas within the boundaries of its certificated area. This includes projections of cost and expected design and installation dates for additional facilities.

Bryan W. Shaw, Ph.D., P.E., *Chairman*
Toby Baker, *Commissioner*
Jon Niermann, *Commissioner*
Richard A. Hyde, P.E., *Executive Director*



TEXAS COMMISSION ON ENVIRONMENTAL QUALITY

Protecting Texas by Reducing and Preventing Pollution

August 22, 2016

RECEIVED

AUG 24 2016

TXU - AP

Mr. R. C. Wiedenfeld, President
Wiedenfeld Water Works, Inc.
P. O. Box 418
Center Point, Texas 78010-0418

Re: Comprehensive Compliance Investigation at:
Center Point Wiedenfeld Water Works, W side of Hwy 27 in Center Point, Kerr County,
Texas
Regulated Entity No.: RN101241511, TCEQ ID No.: 1330007, Investigation No.: 1349037

Dear Mr. Wiedenfeld:

On June 22, 2016, Mrs. Stacy Anderson of the Texas Commission on Environmental Quality (TCEQ) San Antonio Region Office conducted an investigation of the above-referenced facility to evaluate compliance with applicable requirements for a public water supply. No violations are being alleged as a result of the investigation.

The TCEQ appreciates your assistance in this matter and your compliance efforts to ensure protection of the State's environment. If you or members of your staff have any questions regarding these matters, please feel free to contact Mrs. Anderson in the San Antonio Region Office at (210) 403-4078.

Sincerely,

A handwritten signature in cursive script, appearing to read "Joy Thurston-Cook".

Joy Thurston-Cook
Water Section Team Leader
San Antonio Region Office

JTC/sa/eg

cc: Mr. Gary Rose, Operations Manager, Southwest Water Company

Bryan W. Shaw, Ph.D., P.E., *Chairman*
Toby Baker, *Commissioner*
Jon Niermann, *Commissioner*
Richard A. Hyde, P.E., *Executive Director*



TEXAS COMMISSION ON ENVIRONMENTAL QUALITY

Protecting Texas by Reducing and Preventing Pollution

August 22, 2016

Mr. R. Charles Wiedenfeld, President
Wiedenfeld Water Works, Inc.
P.O. Box 418
Center Point, Texas 78010-0418

Re: Notice of Compliance with Notice of Violation (NOV) dated January 15, 2016:
Heritage Park Water System, Located on the east side of Highway 27, 2 miles east of
Center Point, Kerr County, Texas
Regulated Entity No.: RN102680717, TCEQ ID No.: 1330080
Investigation No.: 1342987

Dear Mr. Wiedenfeld:

This letter is to inform you that Texas Commission on Environmental Quality San Antonio Region Office has received adequate compliance documentation on January 13, 2016 to resolve the alleged violations documented during the investigation of the above-referenced regulated entity conducted on November 17, 2015. Based on the information submitted, no further action is required concerning this investigation.

The Texas Commission on Environmental Quality appreciates your assistance in this matter and your compliance efforts to ensure protection of the State's environment. If you or members of your staff have any questions, please feel free to contact Ms. Agnieszka Hobson at the San Antonio Region Office at 210-403-4075.

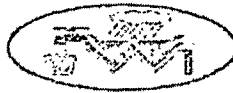
Sincerely,

A handwritten signature in dark ink, appearing to read "Joy Thurston-Cook".

Joy Thurston-Cook
Water Section Team Leader
San Antonio Region Office

JTC/ah/eg

RN102680-117



WIEDENFELD
WATER WORKS
INCORPORATED

133 CP River Road E.
PO Box 418
Center Point, TX 78010
830-634-2321 Phone
830-634-2939 Fax

January 11, 2016

Agnieska Hobson
TCEQ; Water Section
14250 Judson Rd
San Antonio, TX 78233-4480

Re: Response to Records request; heritage Oaks PWS 1330080 & Vista Hills; PWS 1330169

1. Enclosed are the proposed Operating Manuals for the above recently inspected water systems.
2. Flushing records for the above systems are not available; since flushing was not recorded or practiced on a regular basis due to the drought conditions and low aquifer levels. Thus, flushing was performed in response to customer complaints.

Please reply if you need further information or remedies for these violations.

R. Charles Wiedenfeld 1/11/16

R. Charles Wiedenfeld, President
Wiedenfeld Water Works, Incorporated

830-739-5050 cell

TCEQ R-13 2016 JAN 13 1434

TCEQ EXIT INTERVIEW FORM: Potential Violations and/or Records Request				
Regulated Entity/Site Name		Heritage Park Water System		
Investigation Type		TCEQ Add. ID No. 1330080 RN No. (optional)		
Regulated Entity Contact		Comprehensive Compliance Investigation		
Title		Telephone No. 830-634-2321 PAX #/Email address [REDACTED] 11/17/2015 [REDACTED] 10/8/2016		
<p>NOTICE: The information provided in this form is intended to provide clarity to issues that have arisen during the investigation process between the TCEQ and the regulated entity named above and does not represent final TCEQ findings related to violations. Any potential or alleged violations discovered after the date on this form will be communicated to the regulated entity representative prior to the issuance of a notice of violation or enforcement. Conclusions drawn from this investigation, including additional violations or potential violations discovered (if any) during the course of this investigation, will be documented in a final investigation report.</p>				
No.	Type	Rule Citation (if known) Texas Administrative Code = TAC	Description of Issue - Notice of Violation	
1	AV	30 TAC 290.42(l)	Failure to have a plant operations manual available for review.	
2	AV	30 TAC 290.46(l)	Failure to flush dead end mains at monthly intervals.	
3	O		If after further review additional violations or additional issues need to be addressed, you will be notified.	
4	O		Photographs, work orders, invoices, receipts, and applicable records/documents along with written verification are considered acceptable compliance documentation. All compliance documentation must be submitted via fax; 210-545-4329 or regular mail; 14250 Judson Rd., San Antonio, TX 78233.	
<p>Did the TCEQ document the regulated entity named above operating without proper authorization? <input type="checkbox"/> Yes <input checked="" type="checkbox"/> No N/A</p> <p>Did the investigator advise the regulated entity representative that continued operation is not authorized? <input type="checkbox"/> Yes <input checked="" type="checkbox"/> No N/A</p> <p>Document Acknowledgment. Signature on this document establishes only that the regulated entity (RE) representative received a copy of this document and associated continuation pages on the date noted. If contact was made by telephone, the document will be sent via FAX or Email to RE; therefore, the RE signature is not required.</p> <p>Investigator Name (Signed & Printed) <i>Agnesita Hobson</i> Date <i>11/19/2016</i></p> <p>Regulated Entity Representative Name (Signed & Printed) <i>[Signature]</i> Date <i>11/19/2016</i></p>				

If you have questions about any information on this form, please contact your local TCEQ Regional Office. Individuals are entitled to request and receive their personal information that the agency gathers on its forms. They may also have any errors in their information corrected. To review such information, call 512/239-3282. TCEQ 70085 (4/08)

TCEQ R-13 2015 JAN 13 1404

OPERATIONS & MAINTENANCE MANUAL

For
Heritage Park Water system, PWS 1330080

Owned & operated by:

Wiedenfeld Water Works, Incorporated
POB 418 Center Point, Texas 78010
830-634-2321, fax 830-634-2939
Website:

Plant & Wellsite Location: 279 Burney Lane, Center Point, Texas 78010
Heritage Park Water system serves 28 customers (2 inactive), all owners within the subdivisions; Heritage Park I & II.

A. RAW WATER SOURCES

This is a groundwater production plant that only utilizes water from a well as its source.

Groundwater is used from the (Middle) Trinity Aquifer to supply the Heritage Park Water system. The Trinity aquifer is capable of producing moderate amounts (25-500 gpm) of freshwater suitable for most purposes from the Cow Creek limestone member (TWDB Report 102). Trinity water is moderately mineralized with secondary health risk constituents, particularly hardness/carbonates and iron (above 0.3ppm). Likewise, Primary Health Risk constituents, chlorides and sulfates-sulfur are elevated but rarely exceed the Maximum Contaminant Levels (MCL). None of the multitude of primary constituents analyzed periodically from Heritage Park's wells have ever exceeded an MCL. Constituents that are present, but in lesser concentrations are reported in the Annual Water Quality Reports that are provided to the customers.

i. Well Construction

The *HERITAGE PARK WATER SYSTEM* currently has one active well, identified as G1330080A, located at 279 Burney Rd., Center Point, TX. The well-log and a schematic of the well with current static water levels and pump settings, are *ATTACHED*.

ii. Well Pump production and descriptions

Well, G1330080A is currently equipped with a 5Hp 230v, 1phase Schaeffer 16-stage submersible pump. When installed in 2010, pump was rated as 35 gpm at 400' of lift. Today, pump production is 28 gpm at approx. 355' static water level (120 ft water over pump).

HERITAGE PARK WELL

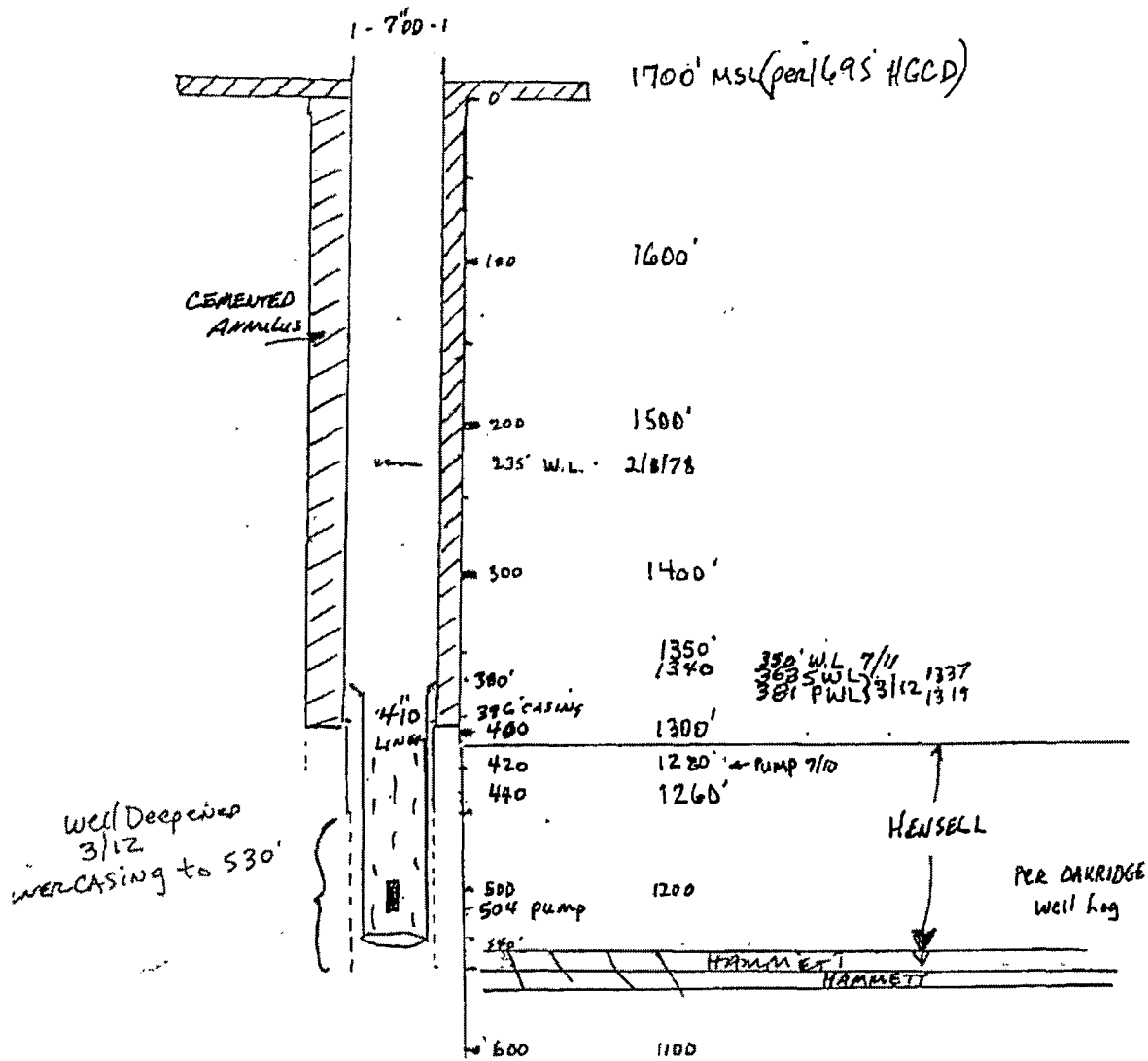
DRILLED 2/78 BY EOMANOS

Deepened 3/12/2012

Wiedefeld Water Works, Inc.

PO Box 418
Center Point, TX 78010

739-5050 CHARLIE



The well's operation is controlled by float switch in the ground storage tank. Floats are set with 18" of pump operation between on & off. The well can also be turned on manually at the tank. The manual switch is needed to check the well during monthly routine checks. If the well does not operate with the manual switch on, then a check of the breaker, and/or starter resets, at the well location, should be done. If the well still does not operate, then contact Kerr Country Pump Company to further evaluate the pump.

B. TREATMENT PLANT DESCRIPTION & DESIGN

The produced water is treated with a disinfectant for biological control and a sequestering agent to control discoloration by the high iron content. A free residual should be maintained between 1 & 1.5 mg/l at the plant and this will allow for residuals at the end of lines to be above state requirements.

i. Water Treatment

Raw water is treated with Napco 201, a hexametaphosphate to sequester iron. The injection point is in the piping exiting (or near) the wellhead.

Disinfection is achieved with the use of 10-12% sodium hypochlorite. The injection point is > 20 pipe diameters downstream of sequestering agent and being ahead of storage facilities.

5gpd Stenner metering pumps, controlled by well operation, take the 10% hypochlorite and Napco 201 solution from 30 gal plastic tanks, located in an enclosure separate of the pressure pumps and electrical facilities.

ii. Production meters

Production from Well G1330080A is quantified by a 1-1/2" Badger E-series flow meter; NSF 61-approved flow meter installed in piping exiting the wellhead.

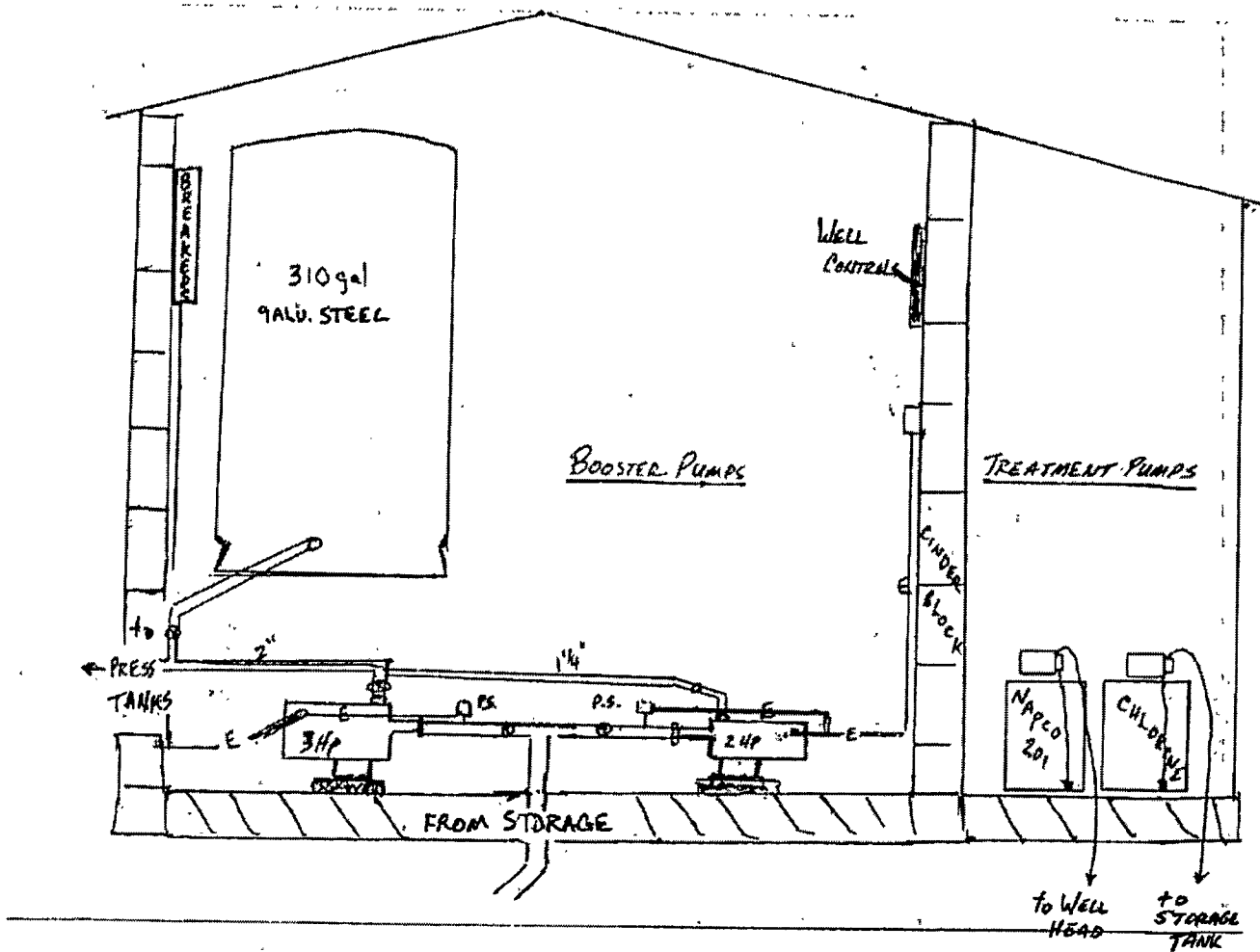
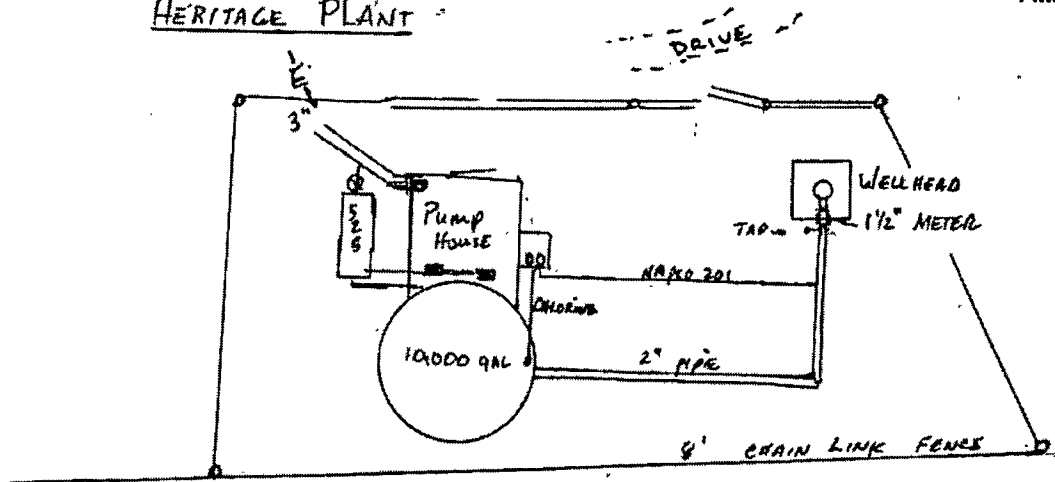
Accuracy of meters are checked regularly and the calibration results documented and included in the operations manual located in the utility's office.

C. PLANT DESIGN, CAPACITIES & OPERATIONS

The plant consists of the well, ground storage, pressure pumps and tanks, and the Distribution system. Each are described ~~HEREIN AND FURTHERMORE BY ATTACHED~~ RECORD DRAWINGS.

HERITAGE PLANT

Attachment 1-3



A. Current Facility capacities, customers & requirements (a/o DEC 2015):

Customers: 28 active meters + 2 inactive meters = 30 for capacity determinations

Facility	TCEQ min. Req'mnts.	current Capacity	percent of Capacity/TCEQ
Well(s)			
0.6 gpm/connect	18	28	64%
Total Storage			
200 gal/connect	6,000	10,000	60%
Hydropneumatic tank			
20 gal/connect	600	835	72%
Pressure pumps			
2 gpm/connect	60	80	75%

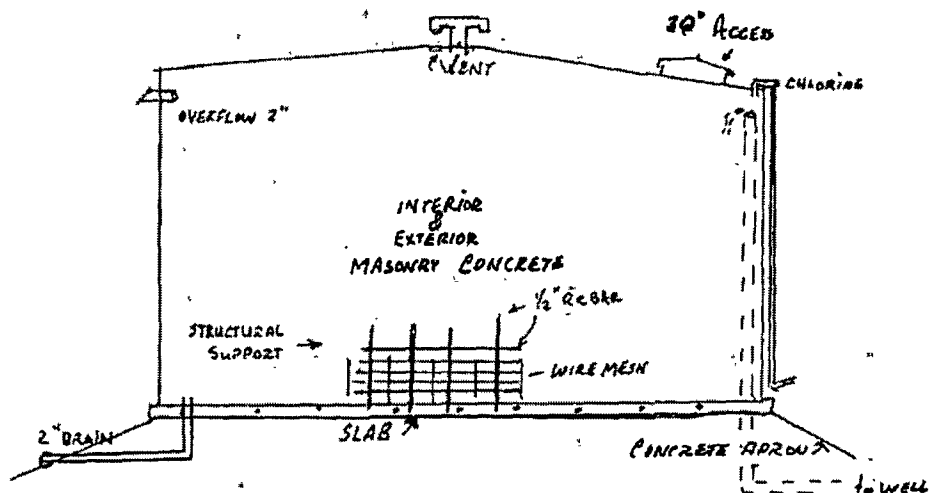
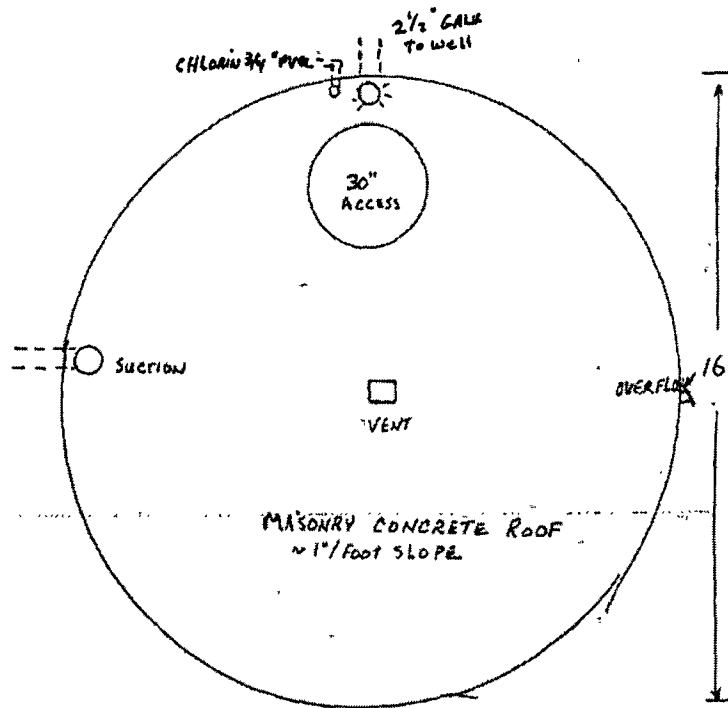
B. Storage Facilities

Current storage includes one (1) 10,000 gallon, masonry concrete tanks that was built in-place assumed circa 1978. 30" diameter access port, 2" overflow, 4" x 4" galv. tin vent with 2-1/2" inlet and outlet features meet the standards.

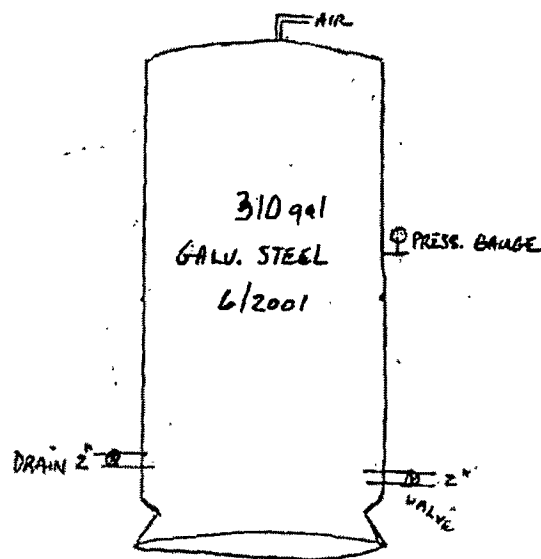
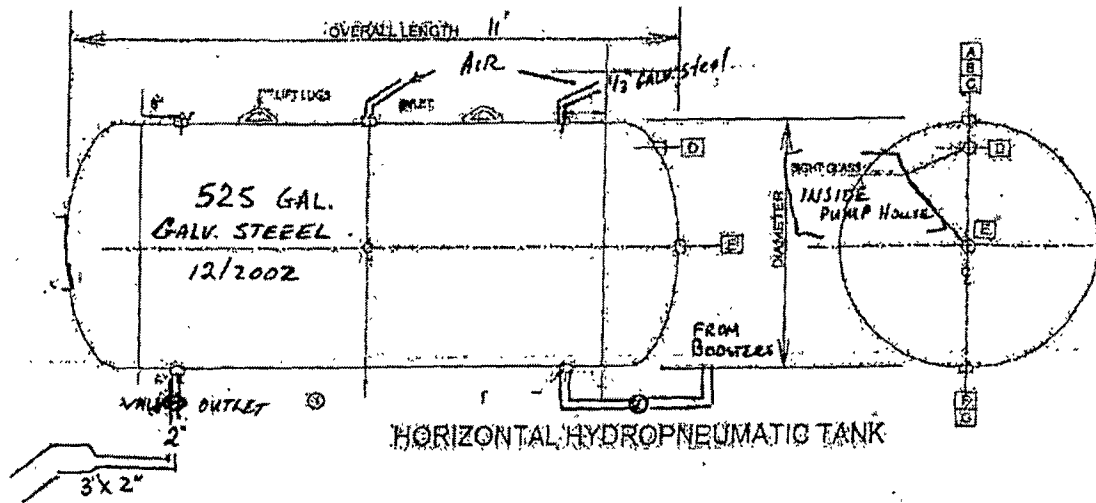
C. Pressure Facilities

- a. One 520 gallon, 100psi rated, galvanized-coated interior (assumed) & exterior, 2" Discharge, (without access ports) was installed in 2002 by WWWInc.
- b. One 310 gallon, 100psi rated, steel with 2" discharge was installed in 2001.

Air/water equalization is maintained by a "Whitewater Mfg. Air/Volume Control Model 0610, 110v, 80psi rated; oil-less compressor" mounted on the 525 gal. tank & the visual water level sight glass are mounted on the inside of the adjacent pumphouse. Both tanks are equipped with 3/4", 75psi rated pressure relief valves. The 525 gal tank has a 2" drain, 2" check valve (reversed to allow air entry in the event of main break). Electrical supply lines encased in flexible, water tight conduit. Tank inspections are performed and recorded.

STORAGE TANK - TYPICALTOP VIEW

PRESSURE TANKS-HERITAGE



Pressure (booster) Pumps -

- a. 2Hp, 230v, 1-phase Flint & Walling, centrifugal, single-stage. 2" suction & 1-1/2" discharge, rated discharge at 38 psi = 40 gpm (installed in 1998)
- b. 2Hp, 230 V, 1-phase Century, self-priming single stage centrifugal pump, 2" suction & 1-1/2" discharge, rated discharge at 40psi = 40 gpm (installed Sept 2008)

The pressure (booster) pumps are each controlled by a pressure switch located at or in the piping to the pressure tank. They are set to operate automatically between 45 (cut-on) and 55psi (cut-off) pressures. The pumps can be manually operated at the pressure control switch.

The pumps are further protected from an empty storage tank with a "low-level shut-off" float switch. These can be overridden in an emergency by lifting the float upright.

Distribution System

i) Piping

Original 3" PVC Sch 40, 220psi (glue-jointed) piping is presumed to have been installed at time of subdivision platting in 1978 and remains in-service. No piping has been installed since. Piping has been found to be installed with 24" soil cover over piping.

See *ATTACHED* : a digitized map of the current distribution system.

ii) Service Taps

Customer connections off the main lines are 1" copper, which is reduced to 3/4" copper for each individual's meter. Meters (dual) are generally set on common property lines. Brass (lead-free) fittings used to connect the new & replaced brass meters.

3. ELECTRICAL & CONTROLS

Electrical supply is provided by Bandera Electric Coop, Inc. The electric meter is located on the pole located approx. 30 ft west of the plantsite's chain-link fencing. A 200 amp disconnect is located below the meter.

The central breaker panel located just inside the door to the right contains a main breaker, which turns off all of the power inside the plant, and several smaller breakers to turn off individual pumps, air compressor, lights, and other electrical outlets. The well and pressure pump motor starters, located on the left wall, are to each individual pump motor and contain motor protection in each. All pumps, motors, and chemical feed pumps can be manually or automatically turned on and off at the main panel. It contains relays, alternator, and manual-off-auto switches.

OPERATIONS & MAINTENANCE MANUAL

- 2) Mow and clean the outside of the plant building which includes, but is not limited to clearing the fence of any undergrowth and any other general facility cleanup.
- 3) Flush "dead-ends" and report estimated gallonage on operations report.
- 4) Finalize, sign and submit the monthly operating report to the WWW office staff.

Annually

- 1) Clean & remove sediment in storage tanks, complete the annual tank inspections and inspection forms.
- 2) Check the wellhead and the well sealing block for any cracks and/or needed caulking.
- 3) Check and replace the screens on the well vent, tank vents, etc.
- 4) Check fencing for providing proper security.

Biannually

- 1) Calibrate well meters

EMERGENCY CONTACTS

- 1) Well & Pressure Pump problems: Kerr Country Pump, 1157 Sidney Baker - Kerrville
Office; 830-257-4107; fax 792-4342
Greg cell: 830-739-2350
Jerry; 830-739-0050
Vince; 830-370-6132
- 2) Electrical Supply problems: Bandera Electric Coop Inc.; 1-866-226-3372
- 3) Emergencies by Disasters, fire, hazardous material spills, medical/health; call 911
- 4) Non-emergency; ie Vandalism, theft, etc;
- Kerr County Sheriff's Dept.: phone 830-896-1133
- Comfort Voluntary Fire Department; phone 830-995-2124
- Center Point Voluntary Fire Dept. 830-634-2334

RECORDS

All business and records, etc. are kept at Wiedenfeld Water Works, Inc offices located at 133 CP River Rd., Center Point, Texas 78010.

OPERATIONS & MAINTENANCE MANUAL

START UP PROCEDURES

If for any reason the system has been off line or down, the steps for startup of the plant are as follows:

- 1) Turn all switches on the main control panel to the OFF position.
- 2) Check the main power source from the electrical company.
- 3) Check all the breakers to be properly reset to ON position.
- 4) Check and reset all motor starter resets.
- 5) At the main control panel turn the well switch to ON. The well and chemical feed pumps should start at this time.
- 6) At the main control panel turn either of the Booster Pump Switches to the ON position. The pump that was turned to the ON position should start if the storage tank level is above the suction line. Starting the pump will cause the water level and pressure to build in the pressure tank. If the tank does not have enough level, then wait until it does and the Booster Pump will start.
- 7) When the Booster Pump builds enough pressure in the pressure tank it will shut off.
- 8) At this time all switches should be in the ON position on the main control panel, and the plant should be back to complete automatic operation.
- 9) All flush valves need to be opened one or two at a time. They should be run until all air is removed from the distribution system, and a free chlorine residual of at least 0.5 mg/l is obtained at the last tap.

Maintenance Schedules

Weekly

- 1) Read well water meter once a week and record usage.
- 2) Check disinfectant & sequestering agent levels in day-tank and record.
- 3) Collect and record disinfectant residual in distribution using the sites noted on the monitoring plan.
- 4) Check both pressure pumps for proper operation.
- 5) Check air/water controller for maintaining proper levels in pressure tank.

Monthly

- 1) Collect two (2) microbiological samples; one from the well and labelled as a "Raw" sample, the other from a site in accordance with the Heritage Park's monitoring plan (attached), labelled as a "Distribution sample" for analysis by a TCEQ approved/accredited laboratory. WWWinc utilizes the UGRA Lab- Kerrville and the Kendall County WCID-Comfort.
 - a) prior to collecting in a 125 ml sterile container, disinfect sampling point tap and check chlorine residual.
 - b) Run water from tap slowly while filling the sample to lip of container
 - c) Complete coliform sample report form.
 - d) Put sample on ice for several hours or until sample temperature is less than 40 degrees before submitting to lab.

Bryan W. Shaw, Ph.D., P.E., *Chairman*
Toby Baker, *Commissioner*
Jon Niermann, *Commissioner*
Richard A. Hyde, P.E., *Executive Director*



Attachment 1-3
PWS-1330080-CO-20151117-CC1
ACONF-

TEXAS COMMISSION ON ENVIRONMENTAL QUALITY **RECEIVED**

Protecting Texas by Reducing and Preventing Pollution

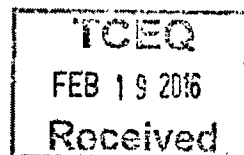
NOV 02 2016

TCEQ
CENTRAL FILE ROOM

January 15, 2016

CERTIFIED MAIL NO.: 91 7199 9991 7036 0449 5370
RETURN RECEIPT REQUESTED

Mr. R.C. Wiedenfeld, President
Wiedenfeld Water Works, Inc.
P.O. Box 418
Center Point, Texas 78010-0418



Re: Notice of Violation for Comprehensive Compliance Investigation at:
Heritage Park Water System; Located on the east side of Highway 27, 2 miles east of
Center Point, Kerr County, Texas
Regulated Entity No.: RN102680717, TCEQ PWS ID No.: 1330080, Investigation No.
1293893

Dear Mr. Wiedenfeld:

On November 17, 2015, Mrs. Agnieszka Hobson of the Texas Commission on Environmental Quality (TCEQ) San Antonio Region Office conducted an investigation of the above-referenced regulated entity to evaluate compliance with applicable requirements for a public water supply. Enclosed is a summary which lists the investigation findings. During the investigation, some concerns were noted which were alleged noncompliances that have been resolved based on subsequent corrective action and compliance documentation submitted to this office on December 9, 2015. In addition, one outstanding alleged violation was identified for which compliance documentation is required. Please submit to this office by February 15, 2016 a written description of corrective action taken and the required documentation demonstrating that compliance has been achieved for each of the outstanding alleged violations.

In the listing of the alleged violations, we have cited applicable requirements, including TCEQ rules. Please note that both the rules themselves and the agency brochure entitled *Obtaining TCEQ Rules* (GI 032) are located on our agency website at <http://www.tceq.state.tx.us> for your reference. If you would like a hard copy of this brochure mailed to you, you may call and request one from either the San Antonio Region Office at 210-490-3096 or the Central Office Publications Ordering Team at 512-239-0028.

The TCEQ appreciates your assistance in this matter. Please note that the Legislature has granted TCEQ enforcement powers which we may exercise to ensure compliance with environmental regulatory requirements. We anticipate that you will resolve the alleged violations as required in order to protect the State's environment. If you have additional information that we are unaware of, you have the opportunity to contest the violations documented in this notice. Should you choose to do so, you must notify the San Antonio Region

Mr. R. C. Wiedenfeld
January 15, 2016
Page 2

Office within 10 days from the date of this letter. At that time, Water Section Manager, Mrs. Lynn Burnguardner will schedule a violation review meeting to be conducted within 21 days from the date of this letter. However, please be advised that if you decide to participate in the violation review process, the TCEQ may still require you to adhere to the compliance schedule included in the enclosed Summary of Investigation Findings until an official decision is made regarding the status of any or all of the contested violations.

If you or members of your staff have any questions, please feel free to contact Mrs. Hobson in the San Antonio Region Office at 210-403-4075.

Sincerely,



Joy Thurston-Cook
Water Section Team Leader
San Antonio Region Office
Texas Commission on Environmental Quality

JTC/AMH/eg

Enclosure: Summary of Investigation Findings

Summary of Investigation Findings

HERITAGE PARK WATER SERVICE

Investigation #

1293893

Investigation Date: 11/17/2015

, KERR COUNTY,

Additional ID(s): 1330080

OUTSTANDING ALLEGED VIOLATION(S) ASSOCIATED TO A NOTICE OF VIOLATION

Track No: 592829 Compliance Due Date: 02/15/2016
30 TAC Chapter 290.42(l)

Alleged Violation:

Investigation: 1293893

Comment Date: 01/08/2016

Failure to provide a plant operations manual.

At the time of the investigation, the system was not able to provide a plant operations manual for review.

30 TAC 290.42(l) - Plant operations manual. A thorough plant operations manual must be compiled and kept up-to-date for operator review and reference. This manual should be of sufficient detail to provide the operator with routine maintenance and repair procedures, with protocols to be utilized in the event of a natural or man-made catastrophe, as well as provide telephone numbers of water system personnel, system officials, and local/state/federal agencies to be contacted in the event of an emergency.

Recommended Corrective Action: Prepare a plant operations manual in accordance with 30 TAC 290.42(l). To document compliance, submit a copy of the plant operations manual to this office by the compliance due date.

ALLEGED VIOLATION(S) NOTED AND RESOLVED ASSOCIATED TO A NOTICE OF VIOLATION

Track No: 592814
30 TAC Chapter 290.46(l)

Alleged Violation:

Investigation: 1293893

Comment Date: 01/08/2016

Failure to flush all dead-end mains at monthly intervals.

At the time of the investigation, the system was not able to confirm that the dead end mains are being flushed at monthly intervals.

30 TAC 290.46(l)-Flushing of mains. All dead-end mains must be flushed at monthly intervals. Dead-end lines and other mains shall be flushed as needed if water quality complaints are received from water customers or if disinfectant residuals fall below acceptable levels as specified in §290.110 of this title.

Recommended Corrective Action: Flush all dead-end mains at monthly intervals. To document compliance, submit documentation of monthly dead end main flushing to this office by the compliance due date.

Resolution: This violation is being resolved as a result of compliance documentation received on 12/09/2015.

PWS_1330080_2015.1.17_Investigation Report
Texas Commission on Environmental Quality
Investigation Report

The TCEQ is committed to accessibility. If you need assistance in accessing this document, please contact oee@tceq.texas.gov

Customer: Wiedenfeld Water Works Incorporated
Customer Number: CN600650725

Regulated Entity Name: HERITAGE PARK WATER SERVICE

Regulated Entity Number: RN102680717

RECEIVED

FEB 17 2016

**TCEQ
PDW/TROT**

Investigation # 1293893

Incident Numbers

Investigator: AGNIESZKA HOBSON

Site Classification GW <=50 CONNECTION

Conducted: 11/17/2015 -- 11/17/2015

SIC Code: 4941

Program(s): PUBLIC WATER SYSTEM/SUPPLY,

Investigation Type: Compliance Investigation

Location: E SIDE OF HWY 27 2 ML E OF CENTER POINT

Additional ID(s): 1330080

Address: ,

Local Unit: REGION 13 - SAN ANTONIO

Activity Type(s): PWSCCIGWCM - CCI GW PURCHASE
- COMMUNITY MANDATORY

Principal(s):

Role

Name

RESPONDENT

WIEDENFELD WATER WORKS INCORPORATED

Contact(s):

Role

Title

Name

Phone

PARTICIPATED
IN

OPERATOR

MR GREG GRINNAN

Work (830) 214-5481

REGULATED
ENTITY MAIL
CONTACT

PRESIDENT/OPERATO
R

MR R. C WIEDENFELD

Fax (830) 634-2939
Work (830) 634-2321

NOTIFIED

PRESIDENT/OPERATO
R

MR R. C WIEDENFELD

REGULATED
ENTITY
CONTACT

PRESIDENT/OPERATO
R

MR R. C WIEDENFELD

Other Staff Member(s):

Role

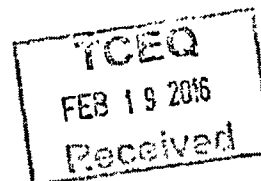
Name

Supervisor

JOY THURSTON-COOK

QA Reviewer

STACY ANDERSON



HERITAGE PARK WATER SERVICE -

11/17/2015 Inv. # - 1293893

Page 2 of 4

Associated Check List

<u>Checklist Name</u>	<u>Unit Name</u>
PWS INVESTIGATION - EQUIPMENT	1330080 Equipment
MONITORING AND SAMPLING revised 06/2013	
PWS STANDARD FIELD	1330080 Investigation

Investigation Comments:**INTRODUCTION**

11/06/2015 - An appointment was made with Mr. R. Charles Wiedenfeld, Wiedenfeld Water Works Incorporated President, to conduct an investigation of the Heritage Park Water System (PWS) on 11/17/2015 at 9:30 am.

11/17/2015 - The investigation was conducted with Mr. Greg Grinnan, Operator, and consisted of a review of all pertinent records, an inspection of the water production and treatment facilities and pressure and free chlorine residual checks in the distribution system. A verbal exit interview was conducted with Mr. Grinnan. During the verbal exit interview, it was explained that the results of the investigation were preliminary; if other issues were discovered, Mr. Grinnan and Mr. Wiedenfeld would be notified.

01/08/2016 - A copy of the Texas Commission on Environmental Quality (TCEQ) Exit Interview Form was sent to Mr. Wiedenfeld. Based on the findings of this investigation, a Notice of Violation (NOV) letter will be issued to facilitate compliance.

GENERAL FACILITY AND PROCESS INFORMATION:

The PWS is classified as a community public water supply system serving 27 connections with an estimated population of approximately 81 people. The water system consists of:

EP#001: One well, with a submersible pump, discharges to one ground storage. Two service pumps take suction and discharge to distribution thru two pressure tanks. An iron sequestering agent and hypochlorination are provided prior to ground storage.

BACKGROUND

The last CCI was conducted at the facility on October 23, 2013. One violation was noted during the investigation. The violation was withdrawn on 05/27/2015.

Enforcement Actions: N/A

Agreed Orders and Compliance Agreements: N/A

Complaints and other Compliance Issues: Yes

Incident #186887 was received on 06/27/2013 regarding rusty water. There were no violations noted during the complaint investigation.

ADDITIONAL INFORMATION

Please see the attached T-NET documentation for system specifics. Attached for review are Water System, Storage Tank, Water Sources, Service Pumps, System Capacities, and Treatment Plants information sheets.

NOV Date 01/15/2016 **Method** WRITTEN

OUTSTANDING ALLEGED VIOLATION(S)

ASSOCIATED TO A NOTICE OF VIOLATION

Track Number: 592829

Compliance Due Date: 02/15/2016

Violation Start Date: Unknown

30 TAC Chapter 290.42(1)

HERITAGE PARK WATER SERV

11/17/2015 Inv. # - 1293893

Page 2 of 4

Associated Check List

<u>Checklist Name</u>	<u>Unit Name</u>
PWS INVESTIGATION - EQUIPMENT	1330080 Equipment
MONITORING AND SAMPLING revised 06/2013	
PWS STANDARD FIELD	1330080 Investigation

Investigation Comments:

INTRODUCTION

11/06/2015 - An appointment was made with Mr. R. Charles Wiedenfeld, Wiedenfeld Water Works Incorporated President, to conduct an investigation of the Heritage Park Water System (PWS) on 11/17/2015 at 9:30 am.

11/17/2015 - The investigation was conducted with Mr. Greg Grinnan, Operator, and consisted of a review of all pertinent records, an inspection of the water production and treatment facilities and pressure and free chlorine residual checks in the distribution system. A verbal exit interview was conducted with Mr. Grinnan. During the verbal exit interview, it was explained that the results of the investigation were preliminary; if other issues were discovered, Mr. Grinnan and Mr. Wiedenfeld would be notified.

01/08/2016 - A copy of the Texas Commission on Environmental Quality (TCEQ) Exit Interview Form was sent to Mr. Wiedenfeld. Based on the findings of this investigation, a Notice of Violation (NOV) letter will be issued to facilitate compliance.

GENERAL FACILITY AND PROCESS INFORMATION:

The PWS is classified as a community public water supply system serving 27 connections with an estimated population of approximately 81 people. The water system consists of:

EP#001: One well, with a submersible pump, discharges to one ground storage. Two service pumps take suction and discharge to distribution thru two pressure tanks. An iron sequestering agent and hypochlorination are provided prior to ground storage.

BACKGROUND

The last CCI was conducted at the facility on October 23, 2013. One violation was noted during the investigation. The violation was withdrawn on 05/27/2015.

Enforcement Actions: N/A

Agreed Orders and Compliance Agreements: N/A

Complaints and other Compliance Issues: Yes

Incident #186887 was received on 06/27/2013 regarding rusty water. There were no violations noted during the complaint investigation.

ADDITIONAL INFORMATION

Please see the attached T-NET documentation for system specifics. Attached for review are Water System, Storage Tank, Water Sources, Service Pumps, System Capacities, and Treatment Plants information sheets.

~~NOV Date~~ 11/17/2015 ~~Method~~ WRITTEN

NOV Date 01/15/2016 Method WRITTEN

OUTSTANDING ALLEGED VIOLATION(S)
ASSOCIATED TO A NOTICE OF VIOLATION

Track Number: 592829

Compliance Due Date: 02/15/2016

Violation Start Date: Unknown

30 TAC Chapter 290.42(l)

HERITAGE PARK WATER SERV

11/17/2015 Inv. # - 1293893

Page 3 of 4

Alleged Violation:**Investigation: 1293893****Comment Date: 01/08/2016**

Failure to provide a plant operations manual.

At the time of the investigation, the system was not able to provide a plant operations manual for review.

30 TAC 290.42(1) - Plant operations manual. A thorough plant operations manual must be compiled and kept up-to-date for operator review and reference. This manual should be of sufficient detail to provide the operator with routine maintenance and repair procedures, with protocols to be utilized in the event of a natural or man-made catastrophe, as well as provide telephone numbers of water system personnel, system officials, and local/state/federal agencies to be contacted in the event of an emergency.

Recommended Corrective Action: Prepare a plant operations manual in accordance with 30 TAC 290.42(1). To document compliance, submit a copy of the plant operations manual to this office by the compliance due date.

ALLEGED VIOLATION(S) NOTED AND RESOLVED**ASSOCIATED TO A NOTICE OF VIOLATION****Track Number: 592814****Resolution Status Date: 1/8/2016****Violation Start Date: Unknown****Violation End Date: 12/9/2015****30 TAC Chapter 290.46(1)****Alleged Violation:****Investigation: 1293893****Comment Date: 01/08/2016**

Failure to flush all dead-end mains at monthly intervals.

At the time of the investigation, the system was not able to confirm that the dead end mains are being flushed at monthly intervals.

30 TAC 290.46(1)-Flushing of mains. All dead-end mains must be flushed at monthly intervals. Dead-end lines and other mains shall be flushed as needed if water quality complaints are received from water customers or if disinfectant residuals fall below acceptable levels as specified in §290.110 of this title.

Recommended Corrective Action: Flush all dead-end mains at monthly intervals. To document compliance, submit documentation of monthly dead end main flushing to this office by the compliance due date.

Resolution: This violation is being resolved as a result of compliance documentation received on 12/09/2015.

HERITAGE PARK WATER SERV.

11/17/2015 Inv. # - 1293893

Page 4 of 4

Signed

Charmaine Thaler
Environmental Investigator

Date

1/8/2016

Signed:

Date

Supervisor**Attachments: (in order of final report submittal)**☐ Enforcement Action Request (EAR)☒ Letter to Facility (specify type): NOV

Investigation Report

☐ Sample Analysis Results☐ Manifests☐ Notice of Registration☒ Maps, Plans, Sketches☐ Photographs☒ Correspondence from the facility☒ Other (specify):T-Net SheetDWW Sheet

Bryan W. Shaw, Ph.D., P.E., *Chairman*
Toby Baker, *Commissioner*
Jon Niermann, *Commissioner*
Richard A. Hyde, P.E., *Executive Director*



TEXAS COMMISSION ON ENVIRONMENTAL QUALITY

Protecting Texas by Reducing and Preventing Pollution

June 30, 2016

RECEIVED

JUL 9 2016

TXU - AP

Mr. Raymond Wiedenfeld, President
Wiedenfeld Water Works, Inc.
P. O. Box 418
Center Point, Texas 78010-0418

Re: Notice of Violation for Compliance Evaluation Investigation at:
Hills & Dales, Kerr County, Texas
Regulated Entity No.: RN101213296, TCEQ ID No.: 1330030
Investigation: 1338007

Dear Mr. Wiedenfeld:

On April 25-26, 2016, Mr. Colby Maron of the Texas Commission on Environmental Quality (TCEQ) San Antonio Region Office conducted an investigation of the above-referenced regulated entity to evaluate compliance with applicable requirements for public water supply. Enclosed is a summary which lists the investigation findings. During the investigation, some concerns were noted which were alleged noncompliances that have been resolved based on subsequent corrective action. Therefore, no further action is required; however please see the enclosed additional issue.

In the listing of the alleged violations, we have cited applicable requirements, including TCEQ rules. Please note that both the rules themselves and the agency brochure entitled Obtaining TCEQ Rules (GI 032) are located on our agency website at <http://www.tceq.state.tx.us> for your reference. If you would like a hard copy of this brochure mailed to you, you may call and request one from either the San Antonio Region Office at (210) 403-4096 or the Central Office Publications Ordering Team at 512-239-0028.

If you or members of your staff have any questions, please feel free to contact Mr. Maron in the San Antonio Region Office at (210) 403-4024.

Sincerely,

A handwritten signature in black ink, appearing to read "Joy Thurston-Cook".

Joy Thurston-Cook, Water Section Team Leader
San Antonio Region Office

JTC/CM/eg

Enclosure: TCEQ Investigation Report

cc: Mr. Tim Williford, Environmental Health & Safety Manager, South West Water Company

Summary of Investigation Findings

HILLS & DALES	Investigation # 1338007
KERR COUNTY,	Investigation Date: 04/25/2016
Additional ID(s): 1330030	

AREA OF CONCERN

Track No: 606884

30 TAC Chapter 290.46(m)

Alleged Violation:

Investigation: 1338007

Comment Date: 06/14/2016

Failure to maintain the barbed wire fence at the Hope Lane Plant.

At the time of the investigation, the barbed on the security fence at the Hope Lane Plant had become loose and fell off the fence.

290.46(m) Maintenance and housekeeping. The maintenance and housekeeping practices used by a public water system shall ensure the good working condition and general appearance of the system's facilities and equipment. The grounds and facilities shall be maintained in a manner so as to minimize the possibility of the harboring of rodents, insects, and other disease vectors, and in such a way as to prevent other conditions that might cause the contamination of the water.

Recommended Corrective Action: Provide by the compliance due date, completed work orders, invoices or photographs indicating the barbed wire had been repaired.

Resolution: 05/16/2016- Photographs were provided indicating the barbed wire had been repaired.

ADDITIONAL ISSUES

Description

Item 1

Additional Comments

At the time of the investigation, it was noted that livestock watering troughs and above ground pools were located at residential connections but the status of backflow and cross-connection prevention could not be determined. The entity must ensure that the potential contamination hazards are evaluated, and if necessary, eliminated or isolated from the public water system.

PWS_1330030_CO_20160425_Investigation Report
Texas Commission on Environmental Quality
Investigation Report

The TCEQ is committed to accessibility. If you need assistance in accessing this document, please contact oee@tceq.texas.gov.

Customer: Wiedenfeld Water Works, Incorporated
Customer Number: CN600650725

Regulated Entity Name: HILLS & DALES

Regulated Entity Number: RN101213296

Investigation # 1338007

Incident Numbers

Investigator: COLBY MARON

Site Classification GW 51-250 CONNECTION

Conducted: 04/25/2016 -- 04/26/2016

SIC Code: 4941

NAIC Code: 221310

Program(s): PUBLIC WATER SYSTEM/SUPPLY

Investigation Type: Compliance Investigation

**Location: 5 M NORTH OF INGRAM ON N SIDE OF
HWY 39**

Additional ID(s): 1330030

Address: ,

Local Unit: REGION 13 - SAN ANTONIO

**Activity Type(s): PWSCIGWCM - CCI GW PURCHASE
- COMMUNITY MANDATORY**

Principal(s):

Role

Name

RESPONDENT

WIEDENFELD WATER WORKS INCORPORATED

Contact(s):

HILLS & DALES - INGRAM

4/25/2016 to 4/26/2016 Inv. # - 1338007

Page 3 of 5

investigation. The investigator reviewed all pertinent records as part of the two day investigation.

04/26/2016- The investigator met with Mr. Amezcua and Mr. Maldonado to inspect the water production, treatment and storage facilities and conduct chlorine residual and pressure tests in the distribution. The investigator concluded with a verbal exit interview.

04/27/2016- The investigator emailed the Exit Interview form noting one alleged violation and one additional issue.

05/16/2016- Mr. Maldonado met the investigator to drop off compliance documentation for the alleged violation and documentation indicating that two alleged violations were cited in error.

A Notice of Violation will be issued as a result of this investigation.

GENERAL FACILITY AND PROCESS INFORMATION

The Hills & Dales system is classified as a community public water supply system serving 73 metered connections with an estimated population of approximately 219 people. The water system consists of two separate entry points.

Entry point 001, Hope Lane Plant, consists of one well, submersible pump, discharging to one ground storage tank. Two service pumps take suction from the ground storage tank and discharge to the primary pressure plane through two pressure tanks. An iron sequestrate and hypo-chlorination are introduced prior to the ground storage tank.

Entry Point 002, Hi Line Plant, consists of one well, submersible pump, discharging to one elevated ground storage tank. Two service pumps take suction from the elevated ground storage tanks and discharge to an upper pressure plane, consisting of 31 connections through two pressure tanks. Water gravity flows to the primary pressure plane. An iron sequestrate and hypo-chlorination are introduced prior to the elevated ground storage tanks.

BACKGROUND

The last full CCI of this facility was conducted on 10/22/2013. Two violations were cited at the investigation.

Current Enforcement Actions: N/A

Agreed Orders and Compliance Agreements: N/A

Complaints and other Compliance Issues: N/A

ADDITIONAL INFORMATION

The water system has received an exception to the sanitary control easement rule for both wells and is required to collect raw water microbiological samples from both each month.

Early 2016, Southwest Water Company (SWWC) bought into the Wiedenfeld Water Works (WWW) making them a part owner of the facilities. According to the CCN information and ownership in the county appraisal district, the water system is still owned by WWW but day to day operations are handled by SWWC.

Please see the attached T-NET documentation for system specifics. Attached for review are Water System, Storage Tank, Water Sources, Service Pumps, System Capacities, and Treatment Plants information sheets.

NOV Date: 04/28/2016 Method: AREA OF CONCERN

AREA OF CONCERN

HILLS & DALES - INGRAM

4/25/2016 to 4/26/2016 Inv. # - 1338007

Page 5 of 5

Attachments: (in order of final report submittal)

☐ Enforcement Action Request (EAR)

☒ Letter to Facility (specify type) : NA

☐ Investigation Report

☐ Sample Analysis Results

☐ Manifests

☐ Notice of Registration

☒ Maps, Plans, Sketches

☐ Photographs

☐ Correspondence from the facility

☒ Other (specify) :

TNET, DW, SOS, EIF

Bryan W. Shaw, Ph.D., P.E., *Chairman*
Toby Baker, *Commissioner*
Jon Niermann, *Commissioner*
Richard A. Hyde, P.E., *Executive Director*



TEXAS COMMISSION ON ENVIRONMENTAL QUALITY

Protecting Texas by Reducing and Preventing Pollution

July 8, 2016

Mr. Raymond Wiedenfeld, President
Wiedenfeld Water Works, Inc.
P. O. Box 418
Center Point, Texas 78010-0418

RECEIVED

JUL 11 2016

TXU - AP

Re: Notice of Violation for Compliance Evaluation Investigation at:
Oak Ridge Estates, Kerr County, Texas
Regulated Entity No.: RN101284438, TCEQ ID No.: 1330134
Investigation: 1338714

Dear Mr. Wiedenfeld:

On April 25-26, 2016, Mr. Colby Maron of the Texas Commission on Environmental Quality (TCEQ) San Antonio Region Office conducted an investigation of the above-referenced regulated entity to evaluate compliance with applicable requirements for public water supply. Enclosed is a summary which lists the investigation findings. During the investigation, some concerns were noted which were alleged noncompliances that have been resolved based on subsequent corrective action. Therefore, no further action is required; however please see the enclosed additional issue.

In the listing of the alleged violations, we have cited applicable requirements, including TCEQ rules. Please note that both the rules themselves and the agency brochure entitled Obtaining TCEQ Rules (GI 032) are located on our agency website at <http://www.tceq.state.tx.us> for your reference. If you would like a hard copy of this brochure mailed to you, you may call and request one from either the San Antonio Region Office at (210) 403-4096 or the Central Office Publications Ordering Team at 512-239-0028.

If you or members of your staff have any questions, please feel free to contact Mr. Maron in the San Antonio Region Office at (210) 403-4024.

Sincerely,

A handwritten signature in black ink, appearing to read "Joy Thurston-Cook".

Joy Thurston-Cook
Water Section Team Leader
San Antonio Region Office

JTC/CM/eg

cc: Mr. Tim Williford, South West Water Company

Summary of Investigation Findings

OAK RIDGE ESTATES WATER SYSTEM , KERR COUNTY, Additional ID(s): 1330134	Investigation # 1338714 Investigation Date: 04/25/2016
---	---

ALLEGED VIOLATION(S) NOTED AND RESOLVED ASSOCIATED TO A NOTICE OF VIOLATION

Track No: 607471
 30 TAC Chapter 290.43(c)(3)

Alleged Violation:

Investigation: 1338714

Comment Date: 06/17/2016

Failure to provide a gravity-hinged and weighted cover, an elastomeric duckbill valve, or other approved device on the storage tank overflow.

At the time of the investigation, the overflow discharge opening did not have a cover.

290.43(c)(3) - Overflows shall be designed in strict accordance with current AWWA standards. If the overflow terminates at any point other than the ground level, it shall be located near enough and at a position accessible from a ladder or the balcony for inspection purposes. The overflow(s) shall be sized to handle the maximum possible fill rate without exceeding the capacity of the overflow(s). The discharge opening of the overflow(s) shall be above the surface of the ground and shall not be subject to submergence. The discharge opening shall be covered with a gravity-hinged and weighted cover, an elastomeric duckbill valve, or other approved device to prevent the entrance of insects and other nuisances. When the tank is not overflowing, the cover shall close automatically and fit tightly with no gap over 1/16 inch.

Recommended Corrective Action: Provide by the compliance due date, a completed work order, invoice or photographs indicating the overflow discharge opening has been covered.

Resolution: 05/16/2016- Photographs indicating that covers had been installed were received.

ADDITIONAL ISSUES

Description
 Item 2

Additional Comments

At the time of the investigation, it was noted that livestock watering troughs and above ground pools were located at residential connections but the status of backflow and cross-connection prevention could not be determined. The entity must ensure that the potential contamination hazards are evaluated, and if necessary, eliminated or isolated from the public water system.

OAK RIDGE ESTATES WATER SYSTEM

Investigation # 1338714

Item 3

30 TACS 291.93(3)

At the time of the investigation, it was noted that the entity has reached 88% of its service pump capacity. This was based upon 44 connections. The entity must submit to the Texas Commission on Environmental Quality (TCEQ) Utility Technical Review Team, MC 159, PO Box 13087, Austin, TX 78711-3087; (512)239-4691 an 85% planning report that clearly explains how the retail public utility will provide the expected service demands to the remaining areas within the boundaries of its certificated area and submit to the TCEQ San Antonio Region Office documentation verifying submittal.

30 TAC 290.93(3)— After any commission field inspection, a retail public utility must analyze the system's capacity to determine if it has reached 85% of its capacity. If the retail public utility has reached 85% of its capacity, it must file this report no later than 90 days after the date of a commission letter detailing the results of the inspection. Capacity is considered to be the overall rated capacity in number of residential connection equivalents based on the most restrictive criteria for production, treatment, storage, or pumping. The report should be submitted in writing and should contain the following: a brief description of the overall utility system and service area; an analysis of the plant capacity as defined in subparagraph (A) of this paragraph; details on how the retail public utility will provide service to the remaining areas within the boundaries of its certificated area. This includes projections of cost and expected design and installation dates for additional facilities.

Bryan W. Shaw, Ph.D., P.E., *Chairman*
Toby Baker, *Commissioner*
Jon Niemann, *Commissioner*
Richard A. Hyde, P.E., *Executive Director*



RECEIVED

JUN 27 2016

TXU - AP

TEXAS COMMISSION ON ENVIRONMENTAL QUALITY

Protecting Texas by Reducing and Preventing Pollution

June 22, 2016

Mr. Raymond C. Wiedenfeld, President
Wiedenfeld Water Works, Inc.
P. O. Box 418
Center Point, Texas 78010-0418

Re: Comprehensive Compliance Investigation at:
Verde Park Estates, Kerr County, Texas
Regulated Entity No.: RN101210961, TCEQ ID No.: 1330027
Investigation: 1337776

Dear Mr. Wiedenfeld:

On April 25-26, 2016, Mr. Colby Maron of the Texas Commission on Environmental Quality (TCEQ) San Antonio Region Office conducted a comprehensive compliance investigation of the above-referenced operation to evaluate compliance with applicable requirements for a public water supply. No violations are being alleged as a result of the investigation. However, please note the Additional Issues listed in the attached Summary of Investigation Findings.

The TCEQ appreciates your assistance in this matter and your compliance efforts to ensure protection of the State's environment. If you or members of your staff have any questions regarding these matters, please feel free to contact Mr. Maron in the San Antonio Region Office at 210/403-4024.

Sincerely,

A handwritten signature in cursive script, appearing to read "Joy Thurston-Cook".

Joy Thurston-Cook
Water Section Team Leader
San Antonio Region Office

JTC/CM/eg

cc: Mr. Tim Williford, Environmental Health & Safety Manager, South West Water Company

Summary of Investigation Findings

VERDE PARK ESTATES

Investigation #

1337776
Investigation Date: 04/25/2016

, KERR COUNTY,

Additional ID(s): 1330027

No Violations Associated to this Investigation

ADDITIONAL ISSUES

Description

Additional Comments

Item 1

At the time of the investigation, it was noted that livestock watering troughs and above ground pools were located at residential connections, but the status of backflow and cross-connection prevention could not be determined. The entity must ensure that the potential contamination hazards are evaluated, and if necessary, eliminated or isolated from the public water system.

Item 2

At the time of the investigation, it was noted that the entity has reached 97% of its service pump capacity. This was based upon 68 connections. The entity must submit to the Texas Commission on Environmental Quality (TCEQ) Plan Review Team, MC 159, PO Box 13087, Austin, TX 78711-3087; (512)239-4691 an 85% planning report that clearly explains how the retail public utility will provide the expected service demands to the remaining areas within the boundaries of its certificated area and submit to the TCEQ San Antonio Region Office documentation verifying submittal.

30 TAC 290.93(3)— After any commission field inspection, a retail public utility must analyze the system's capacity to determine if it has reached 85% of its capacity. If the retail public utility has reached 85% of its capacity, it must file this report no later than 90 days after the date of a commission letter detailing the results of the inspection. Capacity is considered to be the overall rated capacity in number of residential connection equivalents based on the most restrictive criteria for production, treatment, storage, or pumping. The report should be submitted in writing and should contain the following: a brief description of the overall utility system and service area; an analysis of the plant capacity as defined in subparagraph (A) of this paragraph; details on how the retail public utility will provide service to the remaining areas within the boundaries of its certificated area. This includes projections of cost and expected design and installation dates for additional facilities.

Bryan W. Shaw, Ph.D., P.E., *Chairman*
Toby Baker, *Commissioner*
Jon Niemann, *Commissioner*
Richard A. Hyde, P.E., *Executive Director*



TEXAS COMMISSION ON ENVIRONMENTAL QUALITY

Protecting Texas by Reducing and Preventing Pollution

August 22, 2016

Mr. R. C. Wiedenfeld, President
Wiedenfeld Water Works Inc.
PO Box 418
Center Point TX 78010-0418

Re: Notice of Compliance with Notice of Violation (NOV) dated January 15, 2016:
Vista Hills Water System, 125 Vista Hills Drive, Kerr County, Texas
Regulated Entity No.: RN105915359, TCEQ ID No.: 1330169, Investigation No.: 1342973

Dear Mr. Wiedenfeld:

This letter is to inform you that Texas Commission on Environmental Quality San Antonio Region Office has received adequate compliance documentation on January 13, 2016 to resolve the alleged violations documented during the investigation of the above-referenced regulated entity conducted on November 17, 2015. Based on the information submitted, no further action is required concerning this investigation.

The Texas Commission on Environmental Quality appreciates your assistance in this matter and your compliance efforts to ensure protection of the State's environment. If you or members of your staff have any questions, please feel free to contact Mrs. Agnieszka Hobson at the San Antonio Region Office at 210-403-4075.

Sincerely,

A handwritten signature in dark ink, appearing to read "Joy Thurston-Cook".

Joy Thurston-Cook
Water Section Team Leader
San Antonio Region Office

JTC/ah/eg



**WIEDENFELD
WATER WORKS
INCORPORATED**

133 CP River Road E.
PO Box 418
Center Point, TX 78010
830-634-2321 Phone
830-634-2939 Fax

E-mail: wwwins@hctc.net website: wiedenfeldwater.com

January 11, 2016

Agnieska Hobson
TCEQ; Water Section
14260 Judson Rd
San Antonio, TX 78233-4480

Re: Response to Records request; heritage Oaks PWS 1330080 & Vista Hills, PWS 1330169

1. Enclosed are the proposed Operating Manuals for the above recently inspected water systems.
2. Flushing records for the above systems are not available, since flushing was not recorded or practiced on a regular basis due to the drought conditions and low aquifer levels. Thus, flushing was performed in response to customer complaints.

Please reply if you need further information or remedies for these violations.

R. Charles Wiedenfeld 1/11/16

R. Charles Wiedenfeld, President
Wiedenfeld Water Works, Incorporated

830-739-5050 cell

TCEQ R-13 2016 JAN 13 1434

OPERATIONS & MAINTENANCE MANUAL

For
Vista Hills Water system, PWS 1330169

Owned & operated by:

Wiedenfeld Water Works, Incorporated
POB 418 Center Point, Texas 78010
830-634-2321, fax 830-634-2939, email: wwwinc@hctc.net
Website: wiedenfeldwater.com

Plant & Wellsite Location: 125 Vista Hills; Kerrville, Texas 78028
Vista Hills Water system serves 13 customers a/o 12/31/2015.

A. RAW WATER SOURCES -WELL

This is a groundwater production plant that only utilizes water from a well as its source.

Groundwater from the Middle Trinity Aquifer is utilized to supply the Vista Hills PWS. The Trinity Aquifer, more particularly the Cow Creek limestone member (TWDB report 102), is capable of producing moderate amounts (25-500gpm) of freshwater suitable for most purposes.

The Vista Hills PWS currently has one active well, identified as G1330169A, located in the southeast corner of the 125 Vista Hills plant site. A State of Texas well-report and cross-section schematic of well are attached.

The well is currently equipped with a 5Hp, 230v, 1 phase submersible pump, that is producing 18 gallons/minute. Production is measured with an 1-1/2" positive displacement Neptune meter, which is calibrated and recorded every year.

The well's operation is controlled by float switch in the ground storage tank. Floats are set with 18" of pump operation between on & off. The well's electrical controls are located in the electric breaker panel in the pumphouse. A manual switch identified as a timer mechanism is located below the breaker panel, which is needed to check the well during monthly routine checks. If the well does not operate with the manual switch on, then a check of the breaker, and/or starter resets, at the well location, should be done. If the well still does not operate, then contact Kerr Country Pump Company to further evaluate the pump.

B. TREATMENT PLANT DESCRIPTION & DESIGN

The produced water is treated with a disinfectant for biological control and a sequestering agent to control discoloration by the high iron content. A free residual

OPERATIONS & MAINTENANCE MANUAL

maintained between 1 & 1.5 mg/l at the plant and this will allow for residuals at lines to be above state requirements.

is first treated by injecting the sequestering agent, Napco 201, in the well's piping just downstream of the wellhead (after meter).

Disinfectant is injected in piping just prior to entering the storage tanks.

The sequesterant and disinfectant are by 5gpd Stenner chemical metering.

operate electrically in conjunction with the well's operation. Both solutions

are in 5 gallon plastic day tanks located in the pumphouse. These tank levels are in the operation sheet, each visit to wellsite.

PLANT CAPACITIES, DESIGN, & OPERATIONS

The plant facilities consists of the ground storage, pressure pumps and tanks, distribution system. Each are described herein and further by attached record

PLANT CAPACITIES (based on 13 connections in Vista hills)

TCEQ reg.	Vista regs.	Current capacity	% of capacity
0.6 gpm/conn)	8gpm	18 gpm	225%
Storage (200g/c)	2600gal	9,000 gal	346%
S. Tank (20g/c)	260 gal	900 gal	346%
S. Pumps(2gpm/c)	26gpm	80gpm	308%

STORAGE STRUCTURES

Storage facilities

The storage includes two tanks, (one) 5,000 gal masonry tank installed in 1988 and 5,000 gal plastic tanks, installed 2010. The tanks are connected thru the 2" bottom connection by pressure pumps. Each tank can be isolated for individual operation.

PRESSURE PUMPS

Three (3) Ov, single phase, self-priming, dual stage centrifugal Flint & Walling

pumps capable of producing 40gpm@40psi are maintaining proper pressure.

The pumps are each controlled by a Square D pressure switches located in the pressure tank. They are set to operate automatically between 45 (cut-on)

and 55 (cut-off) pressures. The pumps can be manually operated at the pressure

tanks. The tanks are further protected from an empty storage tank with a "low-level shut-off"

These can be overridden in an emergency by getting on tank and lifting the

OPERATIONS & MAINTENANCE MANUAL

c. Pressure Tank(s)

One 960 gal. epoxy coated steel, 125psi rated Wendland Mfg'er was installed in 2014. The tank is filled thru 3" outlet on east end that is 'Tee'd' off the 3" distribution line. The tank is equipped with a 2" drain and air inlet port, a 1" sight glass port. The tank is not equipped with an inspection port for entry into tank.

Air/water equalization is maintained by a "Whitewater mfg.", model 0610, 110v, oil-less compressor that is mounted on the 2" port on top of the tank.

d. Distribution System

Piping in Vista Hills PWS consists of 3" PVC, sdr 21 leaving the plant out to Scenic Hills Rd. where connects with 6" clay-asbestos pipe that runs north & south to the extent of the Vista Hills subdiv.

Gate valves are installed at every junction. Flush valves are installed below grade for each of the 4 flush hydrants.

Each customer is metered with a 5/8" x 3/4" residential meter, meter boxes with valves on either side of meter are located on common property lines. Piping off the main consists of a 1" brass saddle, brass valve and polyvinyl (copper tubing size) piping to meter box. Compression fittings are used to connect fittings.

A map of the system is attached and is available at the WWWInc offices.

3. ELECTRICAL & CONTROLS

Electrical supply is provided by Kerrville Public Utility Board. The electric meter is located on the southeast side of the concrete block pump house. A 150 amp disconnect is located below the meter.

The central breaker panel located just inside the door to the left contains a main breaker, which turns off all of the power inside the plant, and several smaller breakers to turn off individual pumps, air compressor, lights, and other electrical outlets. The well and pressure pump motor starters, located on the left wall, are to each individual pump motor and contain motor protection in each. All pumps, motors, and chemical feed pumps can be manually or automatically turned on and off at the main panel. It contains relays, alternator, and manual-off-auto switches.

All electrical wiring is encased in flexible, watertight conduit. Connections made in junction boxes or at terminals.

OPERATIONS & MAINTENANCE MANUAL

START UP PROCEDURES

If for any reason the system has been off line or down, the steps for startup of the plant are as follows:

- 1) Turn all switches on the main control panel to the OFF position.
- 2) Check the main power source from the electrical company.
- 3) Check all the breakers to be properly reset to ON position.
- 4) Check and reset all motor starter resets.
- 5) At the main control panel turn the well switch to ON. The well and chemical feed pumps should start at this time.
- 6) At the main control panel turn either of the Booster Pump Switches to the ON position. The pump that was turned to the ON position should start if the storage tank level is above the suction line. Starting the pump will cause the water level and pressure to build in the pressure tank. If the tank does not have enough level, then wait until it does and the Booster Pump will start.
- 7) When the Booster Pump builds enough pressure in the pressure tank it will shut off.
- 8) At this time all switches should be in the ON position on the main control panel, and the plant should be back to complete automatic operation.
- 9) All flush valves need to be opened one or two at a time. They should be run until all air is removed from the distribution system, and a free chlorine residual of at least 0.5 mg/l is obtained at the last tap.

Maintenance Schedules: **Weekly**

- 1) Read well water meter once a week and record usage.
- 2) Check disinfectant & sequestering agent levels in day-tank and record.
- 3) Collect and record disinfectant residual in distribution using the sites noted on the monitoring plan.
- 4) Check both pressure pumps for proper operation.
- 5) Check air/water controller for maintaining proper levels in pressure tank.

Monthly

- 1) Collect two (2) microbiological samples; one from the well and labelled as a "Raw" sample, the other from a site in accordance with the Heritage Park's monitoring plan (attached), labelled as a "Distribution sample" for analysis by a TCEQ approved/accredited laboratory. WWWInc utilizes the UGRA Lab- Kerrville and the Kendall County WCID-Comfort.
 - a) prior to collecting in a 125 ml sterile container, disinfect sampling point tap and check chlorine residual.
 - b) Run water from tap slowly while filling the sample to lip of container
 - c) Complete coliform sample report form.
 - d) Put sample on ice for several hours or until sample temperature is less than 40 degrees before submitting to lab.

OPERATIONS & MAINTENANCE MANUAL

- 2) Mow and clean the outside of the plant building which includes, but is not limited to clearing the fence of any undergrowth and any other general facility cleanup.
- 3) Flush "dead-ends" and report estimated gallonage on operations report.
- 4) Finalize, sign and submit the monthly operating report to the WWW office staff.

Annually

- 1) Clean & remove sediment in storage tanks, complete the annual tank inspections and inspection forms.
- 2) Check the wellhead and the well sealing block for any cracks and/or needed caulking.
- 3) Check and replace the screens on the well vent, tank vents, etc.
- 4) Check fencing for providing proper security.

Biannually

- 1) Calibrate well meters

EMERGENCY CONTACTS

- 1) Well & Pressure Pump problems: Kerr Country Pump, 1157 Sidney Baker -
Kerrville
Office; 830-257-4107; fax 792-4342
Greg cell: 830-739-2350
Jerry; 830-739-0050
Vince; 830-370-6132
- 2) Electrical Supply problems: Kerrville Public Utility Board; 1-830-257-3050
- 3) Emergencies by Disasters, fire, hazardous material spills, medical/health; call
911
- 4) Non-emergency; ie Vandalism, theft, etc;
- Kerr County Sheriff's Dept.: phone 830-896-1133
- City of Kerrville Fire Dept. 830-257-8449
- Comfort Voluntary Fire Department; phone 830-995-2124
- Center Point Voluntary Fire Dept. 830-634-2334

RECORDS

All business and records, etc. are kept at Wiedenfeld Water Works, Inc offices located at 133 CP River Rd., Center Point, Texas 78010.

1-100 WISN
620
VISTA

State of Texas
WATER WELL REPORT

Texas Water Well Drillers Board
P.O. Box 13087
Austin, Texas 78711

Please use black ink.
Send original copy by
certified mail to the
Texas Water Commission
P.O. Box 13087
Austin, Texas 78711

ATTENTION OWNER: Confidentiality Privilege Notice on Reverse Side

OWNER B. K. Williams, Jr. M.D. Address 125 VISTA HILLS RD KERRVILLE
(Name) (Street or RFD) (City) (State) (Zip)
2) LOCATION OF WELL: County Kerr 1 miles in North direction from Kerrville
(Town)

Driller must complete the legal description to the right
with distance and direction from two intersecting sec-
tion or survey lines, or he must locate and identify the
well on an official Quarter- or Half-Scale Texas County
General Highway Map and attach the map to this form.

☐ Legal description:

Section No. _____ Block No. _____ Township _____

Abstract No. _____ Survey Name _____

Distance and direction from two intersecting section or survey lines _____

☒ See attached map.

3) TYPE OF WORK (Check):

☒ New Well ☐ Deepening
☐ Reconditioning ☐ Plugging

4) PROPOSED USE (Check):

☐ Domestic ☐ Industrial ☐ Monitor ☒ Public Supply
☐ Irrigation ☐ Test Well ☐ Injection ☐ Other _____

5) DRILLING METHOD (Check):

☐ Driven
☐ Mud Rotary ☐ Air Hammer ☐ Jetted ☐ Bored
☒ Air Rotary ☐ Cable Tool ☐ Other _____

6) WELL LOG:

Date Drilling: 10/24 87
Started 10/24 87
Completed 11/17 87

DIAMETER OF HOLE

Dia. (In.)	From (ft.)	To (ft.)
10-5/8	Surface	80
9-1/2	80	600
5-7/8	600	620

7) BOREHOLE COMPLETION:

☐ Open Hole ☐ Straight Wall ☐ Underreamed
☐ Gravel Packed ☒ Other Slotted liner
If Gravel Packed give interval ... from _____ ft. to _____ ft.

From (ft.)	To (ft.)	Description and color of formation material
Surf.	2	Caliche
2	72	White, Tan Lime
72	98	Blue Shale
98	114	White Lime
114	388	Blue Shale w/ Lime Stks.
388	412	Grey Sand (Glenrose)
412	416	Grey Lime
416	455	Grey Sand w/ Lime Stks.
455	472	Yellow Sand w/ Lime Stks.
472	494	Vfg. Red Sand w/ Red Silt
494	560	Red Sand
560	596	White Lime
596	620	Coarse Red Sand w/ conglomerate and Lime Stks.

Surf. 2 Caliche
2 72 White, Tan Lime
72 98 Blue Shale
98 114 White Lime
114 388 Blue Shale w/ Lime Stks.
388 412 Grey Sand (Glenrose)
412 416 Grey Lime
416 455 Grey Sand w/ Lime Stks.
455 472 Yellow Sand w/ Lime Stks.
472 494 Vfg. Red Sand w/ Red Silt
494 560 Red Sand
560 596 White Lime
596 620 Coarse Red Sand w/ conglomerate and Lime Stks.

8) CASING, BLANK PIPE, AND WELL SCREEN DATA:

Dia. (In.)	New or Used	Steel, Plastic, etc. Perf., Slotted, etc. Screen Mpt., If commercial	Setting (ft.)		Gap Casing Screen
			From	To	
65/8H		API 5 L Steel	Surf.	501	
65/8H		25" wall mill	501	581	
		slotted liner/slotted			
		12 slots/ft. -			
		slot size 2.5" X .125"			

9) CEMENTING DATA [Rule 319.44(b)]

Cemented from Surf. to 501 ft. No. of Sacks Used 100
ft. to _____ ft. No. of Sacks Used _____

Method used Pressure pumped

Cemented by Driller

10) SURFACE COMPLETION

☒ Specified Surface Slab Installed [Rule 319.44(c)]

☐ Pitless Adapter Used [Rule 319.44(d)]

☐ Approved Alternative Procedure Used [Rule 319.71]

Dowell formula = .2528 cu.ft./lin.ft.

11) WATER LEVEL:

Static level 431 ft. below land surface Date 11/20

Artesian flow _____ gpm. Date _____

12) PACKERS:

Type	Depth
Two Canvas	500 - 497

13) TYPE PUMP:

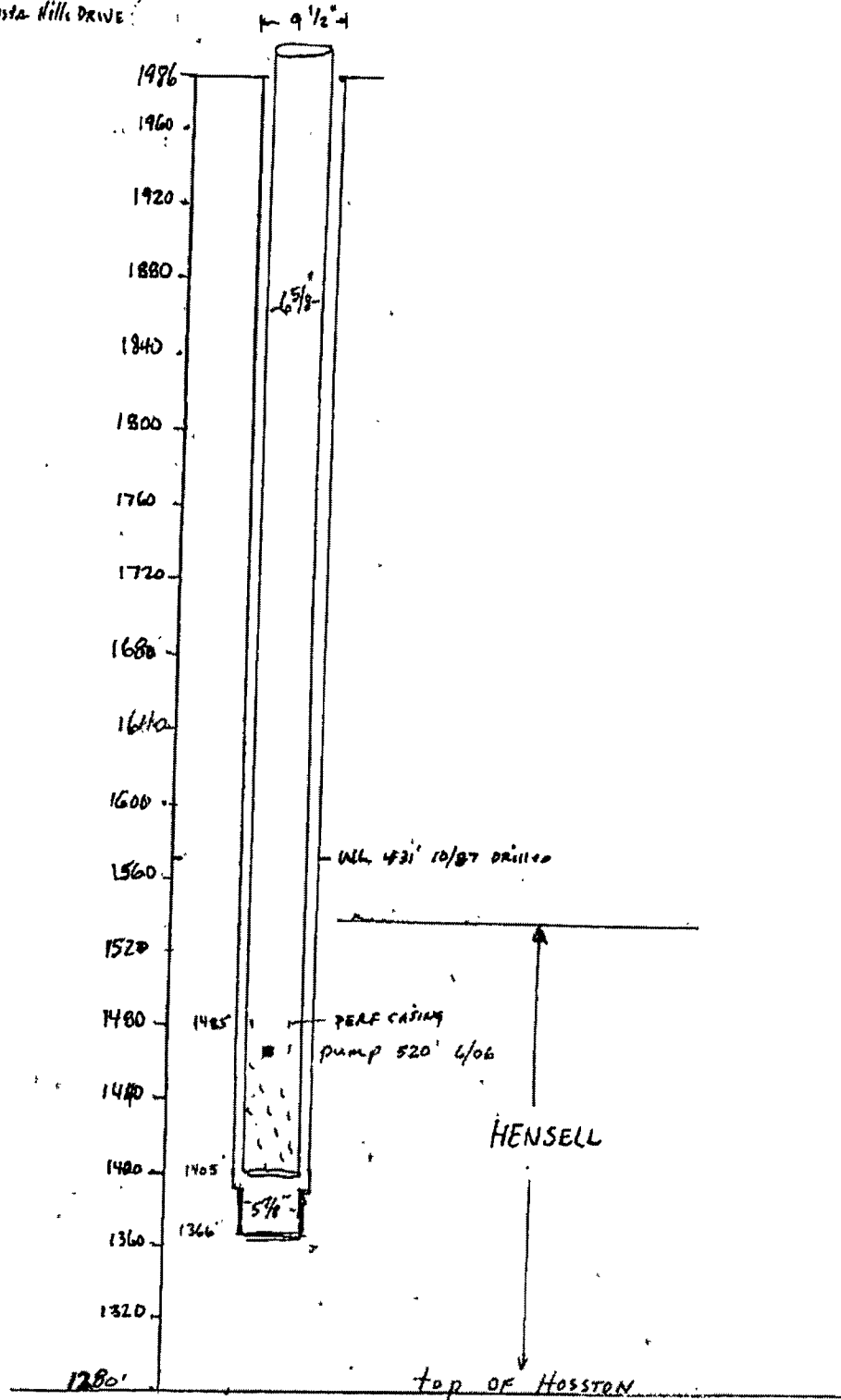
☐ Turbine ☐ Jet ☐ Submersible ☐ Cylinder

☐ Other _____

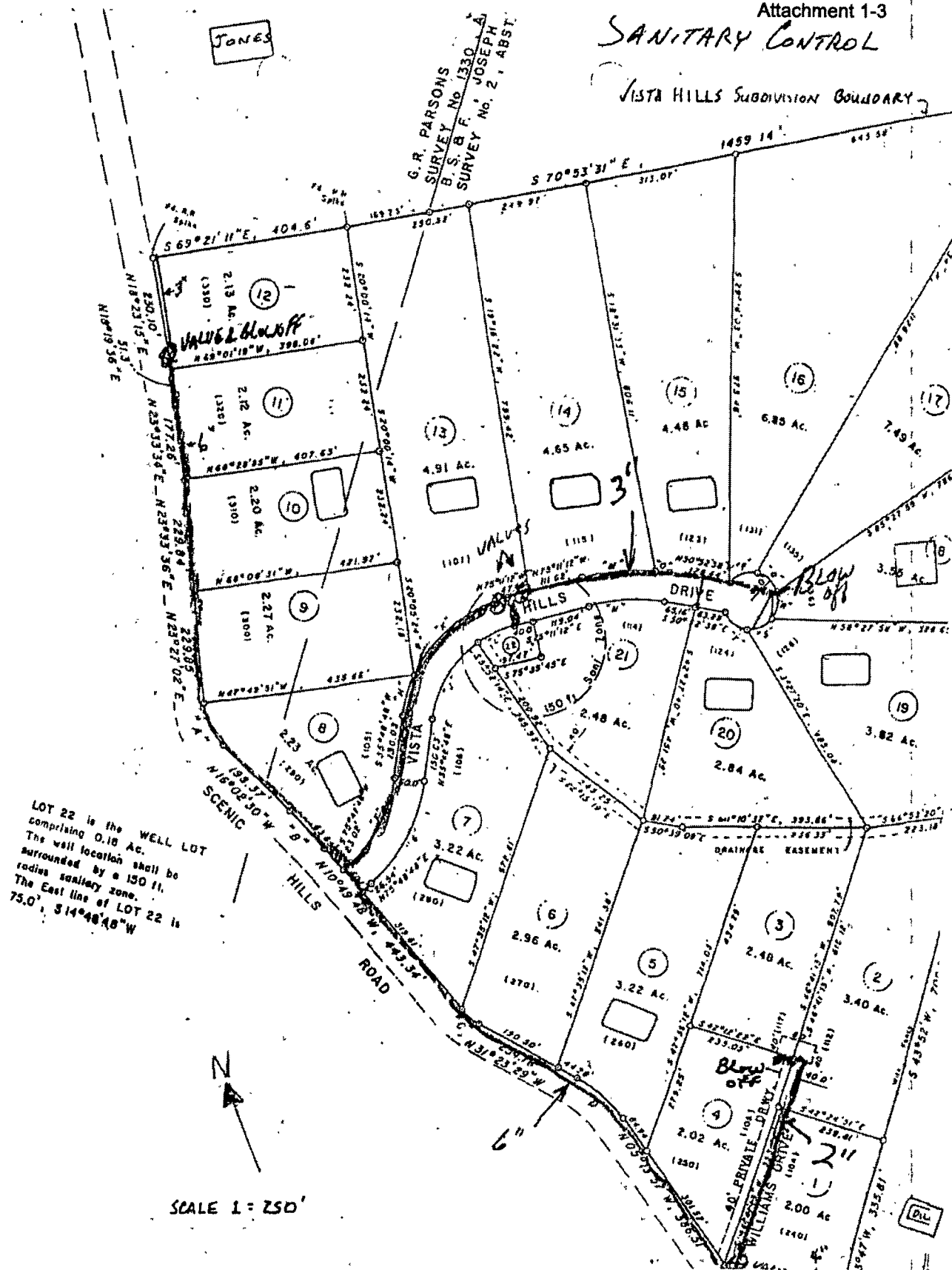
Depth to pump bowls, cylinder, jet, etc., _____ ft.

(Use reverse side if necessary)

VISTA HILLS Well
125 Vista Hills DRIVE



VISTA HILLS SUBDIVISION BOUNDARY



TWS-1000169-CU-20151117-CU
AC-JF-

Bryan W. Shaw, Ph.D., P.E., *Chairman*
 Toby Baker, *Commissioner*
 Jon Niemann, *Commissioner*
 Richard A. Hyde, P.E., *Executive Director*



RECEIVED

NOV 02 2016

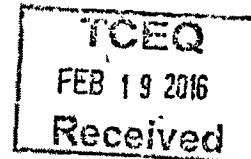
TEXAS COMMISSION ON ENVIRONMENTAL QUALITY

*Protecting Texas by Reducing and Preventing Pollution*TCEQ
CENTRAL FILE ROOM

January 15, 2016

CERTIFIED MAIL NO.: 91 7199 9991 7036 0449 5387
RETURN RECEIPT REQUESTED

Mr. R.C. Wiedenfeld, President
 Wiedenfeld Water Works, Inc.
 P.O. Box 418
 Center Point, Texas 78010-0418



Re: Notice of Violation for Comprehensive Compliance Investigation at:
 Vista Hills Water System; Located at 125 Vista Hills Drive, Kerr County, Texas
 Regulated Entity No.: RN105915359, TCEQ PWS ID No.: 1330169, Investigation No.
 1293891

Dear Mr. Wiedenfeld:

On November 17, 2015, Mrs. Agnieszka Hobson of the Texas Commission on Environmental Quality (TCEQ) San Antonio Region Office conducted an investigation of the above-referenced regulated entity to evaluate compliance with applicable requirements for a public water supply. Enclosed is a summary which lists the investigation findings. During the investigation, some concerns were noted which were alleged noncompliances that have been resolved based on subsequent corrective action and compliance documentation submitted to this office on December 9, 2015. In addition, one outstanding alleged violation was identified for which compliance documentation is required. Please submit to this office by February 15, 2016 a written description of corrective action taken and the required documentation demonstrating that compliance has been achieved for each of the outstanding alleged violations.

In the listing of the alleged violations, we have cited applicable requirements, including TCEQ rules. Please note that both the rules themselves and the agency brochure entitled *Obtaining TCEQ Rules* (GI 032) are located on our agency website at <http://www.tceq.state.tx.us> for your reference. If you would like a hard copy of this brochure mailed to you, you may call and request one from either the San Antonio Region Office at 210-490-3096 or the Central Office Publications Ordering Team at 512-239-0028.

The TCEQ appreciates your assistance in this matter. Please note that the Legislature has granted TCEQ enforcement powers which we may exercise to ensure compliance with environmental regulatory requirements. We anticipate that you will resolve the alleged violations as required in order to protect the State's environment. If you have additional information that we are unaware of, you have the opportunity to contest the violations documented in this notice. Should you choose to do so, you must notify the San Antonio Region Office within 10 days from the date of this letter. At that time, Water Section Manager, Mrs.

TCEQ Region 13 • 14250 Judson Rd. • San Antonio, Texas 78233-4480 • 210-490-3096 • Fax 210-545-4329


Austin Headquarters: 512-239-1000 • tceq.texas.gov • How is our customer service? tceq.texas.gov/customer/survey
 printed on recycled paper

Mr. R. C. Wiedenfeld
January 15, 2016
Page 2

Lynn Bumgardner will schedule a violation review meeting to be conducted within 21 days from the date of this letter. However, please be advised that if you decide to participate in the violation review process, the TCEQ may still require you to adhere to the compliance schedule included in the enclosed Summary of Investigation Findings until an official decision is made regarding the status of any or all of the contested violations.

If you or members of your staff have any questions, please feel free to contact Mrs. Hobson in the San Antonio Region Office at 210-403-4075.

Sincerely,



Joy Thurston-Cook
Water Section Team Leader
San Antonio Region Office
Texas Commission on Environmental Quality

JTC/AMH/eg

Enclosure: Summary of Investigation Findings

Summary of Investigation Findings

VISTA HILLS

Investigation #

1293891

Investigation Date: 11/17/2015

COUNTY,

Additional ID(s): 1330169

OUTSTANDING ALLEGED VIOLATION(S)
ASSOCIATED TO A NOTICE OF VIOLATIONTrack No: 592908 Compliance Due Date: 02/15/2016
30 TAC Chapter 290.42(I)

Alleged Violation:

Investigation: 1293891

Comment Date: 01/11/2016

Failure to provide a plant operations manual.

At the time of the investigation, the system was not able to provide a plant operations manual for review.

30 TAC 290.42(I) - Plant operations manual. A thorough plant operations manual must be compiled and kept up-to-date for operator review and reference. This manual should be of sufficient detail to provide the operator with routine maintenance and repair procedures, with protocols to be utilized in the event of a natural or man-made catastrophe, as well as provide telephone numbers of water system personnel, system officials, and local/state/federal agencies to be contacted in the event of an emergency.

Recommended Corrective Action: Prepare a plant operations manual in accordance with 30 TAC 290.42(I).

To document compliance, submit a copy of the plant operations manual to this office by the compliance due date.

ALLEGED VIOLATION(S) NOTED AND RESOLVED
ASSOCIATED TO A NOTICE OF VIOLATIONTrack No: 592907
30 TAC Chapter 290.46(I)

Alleged Violation:

Investigation: 1293891

Comment Date: 01/11/2016

Failure to flush all dead-end mains at monthly intervals.

At the time of the investigation, the system was not able to confirm that the dead end mains are being flushed at monthly intervals.

30 TAC 290.46(I)-Flushing of mains. All dead-end mains must be flushed at monthly intervals. Dead-end lines and other mains shall be flushed as needed if water quality complaints are received from water customers or if disinfectant residuals fall below acceptable levels as specified in §290.110 of this title.

Recommended Corrective Action: Flush all dead-end mains at monthly intervals. To document compliance, submit documentation of monthly dead end main flushing to this office by the compliance due date.

Resolution: This violation is being resolved as a result of compliance documentation received on 12/09/2015.

PWS_1330169_2015 7_Investigation Report
Texas Commission on Environmental Quality
Investigation Report

The TCEQ is committed to accessibility. If you need assistance in accessing this document, please contact oee@tceq.texas.gov

Customer: Wiedenfeld Water Works Incorporated
Customer Number: CN600650725

Regulated Entity Name: VISTA HILLS
Regulated Entity Number: RN105915359

Investigation # 1293891

Incident Numbers

Investigator: AGNIESZKA HOBSON

Site Classification GW <= 30 CONNECTION
GROUNDWATER TCEQ

Conducted: 11/17/2015 -- 11/17/2015

No Industry Code Assigned

Program(s): PUBLIC WATER SYSTEM/SUPPLY

Investigation Type: Compliance Investigation

Location:

Additional ID(s): 1330169

Address:

Local Unit: REGION 13 - SAN ANTONIO

Activity Type(s): PWSCCIGWCM - CCI GW PURCHASE
- COMMUNITY MANDATORYPrincipal(s):

Role

Name

RESPONDENT

WIEDENFELD WATER WORKS INCORPORATED

Contact(s):

Role

Title

Name

Phone

NOTIFIED

PRESIDENT/OPERATO
R

MR R. C WIEDENFELD

REGULATED
ENTITY MAIL
CONTACTPRESIDENT/OPERATO
R

MR R. C WIEDENFELD

Fax (830) 634-2939
Work (830) 634-2321REGULATED
ENTITY
CONTACTPRESIDENT/OPERATO
R

MR R. C WIEDENFELD

PARTICIPATED
IN

OPERATOR

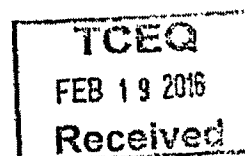
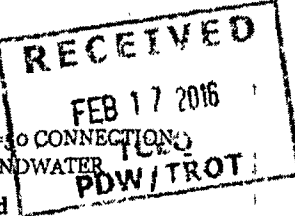
MR GREG GRINNAN

Work (830) 214-5481

Other Staff Member(s):

Role

Name

QA Reviewer
SupervisorSTACY ANDERSON
JOY THURSTON-COOK

VISTA HILLS

11/17/2015 Inv. # - 1293891

Page 2 of 4

Associated Check List

Checklist Name

PWS INVESTIGATION - EQUIPMENT
MONITORING AND SAMPLING revised 06/2013
PWS STANDARD FIELD

Unit Name

1330169 Equipment
1330169 Investigation

Investigation Comments:

INTRODUCTION

11/06/2015 - An appointment was made with Mr. R.C. "Charles" Wiedenfeld, President, to conduct an investigation of the Vista Hills Public Water System (PWS) on 11/17/2015 at 9:30 am.

11/17/2015 - The investigation was conducted with Mr. Greg Grinnan, Operator and consisted of a review of all pertinent records and inspection of the water production and treatment facilities and pressure and free chlorine residual checks in the distribution system. A verbal exit interview was conducted with Mr. Grinnan. During the verbal exit interview, it was explained that the results of the investigation were preliminary; if other issues were discovered, Mr. Grinnan and Mr. Wiedenfeld would be notified.

01/08/2016 - A copy of the Texas Commission on Environmental Quality (TCEQ) Exit Interview Form was sent to Mr. Wiedenfeld. Based on the findings of this investigation, a Notice of Violation (NOV) letter will be issued to facilitate compliance.

GENERAL FACILITY AND PROCESS INFORMATION:

The PWS is classified as a community public water supply system serving 13 connections with an estimated population of approximately 39 people. The water system consists of:

EP#001: One well, with a submersible pump, discharges to two ground storage tanks. Two service pumps take suction from the ground storage tanks and discharge to distribution thru one pressure tank. An iron sequestering agent and hypochlorination are provided prior to ground storage.

BACKGROUND

The last CCI was conducted at the facility on October 23, 2013. One violation was noted during the investigation.

Enforcement Actions: N/A

Agreed Orders and Compliance Agreements: N/A

Complaints and other Compliance Issues: N/A

ADDITIONAL INFORMATION

Please see the attached T-NET documentation for system specifics. Attached for review are Water System, Storage Tank, Water Sources, Service Pumps, System Capacities, and Treatment Plants information sheets.

NOV Date 01/15/2016 Method WRITTEN

OUTSTANDING ALLEGED VIOLATION(S)

ASSOCIATED TO A NOTICE OF VIOLATION

Track Number: 592908

Compliance Due Date: 02/15/2016

Violation Start Date: Unknown

30 TAC Chapter 290.42(1)

Alleged Violation:

Investigation: 1293891

Comment Date: 01/11/2016

VISTA HILLS

11/17/2015 Inv. # - 1293891

Page 3 of 4

Investigation: 1293891

Comment Date: 01/11/2016

Failure to provide a plant operations manual.

At the time of the investigation, the system was not able to provide a plant operations manual for review.

30 TAC 290.42(l) - Plant operations manual. A thorough plant operations manual must be compiled and kept up-to-date for operator review and reference. This manual should be of sufficient detail to provide the operator with routine maintenance and repair procedures, with protocols to be utilized in the event of a natural or man-made catastrophe, as well as provide telephone numbers of water system personnel, system officials, and local/state/federal agencies to be contacted in the event of an emergency.

Recommended Corrective Action: Prepare a plant operations manual in accordance with 30 TAC 290.42(l). To document compliance, submit a copy of the plant operations manual to this office by the compliance due date.

ALLEGED VIOLATION(S) NOTED AND RESOLVED

ASSOCIATED TO A NOTICE OF VIOLATION

Track Number: 592907

Resolution Status Date: 1/11/2016

Violation Start Date: Unknown

Violation End Date: 12/9/2015

30 TAC Chapter 290.46(l)

Alleged Violation:

Investigation: 1293891

Comment Date: 01/11/2016

Failure to flush all dead-end mains at monthly intervals.

At the time of the investigation, the system was not able to confirm that the dead end mains are being flushed at monthly intervals.

30 TAC 290.46(l)-Flushing of mains. All dead-end mains must be flushed at monthly intervals. Dead-end lines and other mains shall be flushed as needed if water quality complaints are received from water customers or if disinfectant residuals fall below acceptable levels as specified in §290.110 of this title.

Recommended Corrective Action: Flush all dead-end mains at monthly intervals. To document compliance, submit documentation of monthly dead end main flushing to this office by the compliance due date.

Resolution: This violation is being resolved as a result of compliance documentation received on 12/09/2015.

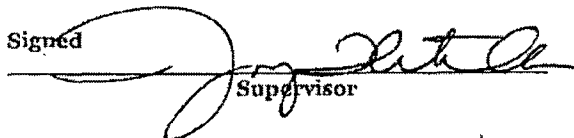
Signed


Environmental Investigator

Date

1/11/2016

Signed


Supervisor

Date

1/13/2016

VISTA HILLS

11/17/2015 Inv. # - 1293891

Page 4 of 4

Attachments: (in order of final report submittal)

☐ Enforcement Action Request (EAR)

☒ Letter to Facility (specify type): NOV

☐ Investigation Report

☐ Sample Analysis Results

☐ Manifests

☐ Notice of Registration

☒ Maps, Plans, Sketches

☐ Photographs

☒ Correspondence from the facility

☒ Other (specify):

T-Net Sheet

DWW Sheet

Agnieszka Hobson

From: Agnieszka Hobson
Sent: Friday, January 08, 2016 9:09 AM
To: [REDACTED]
Subject: Vista Hills and Heritage Park Water Systems Exit Interview Forms
Attachments: 1330080 Heritage Park Water System.pdf; 1330169 Vista Hills EIF.pdf

The Exit Interview Form: Potential Violations and/or Records Request is being provided as an attachment to this email to ensure that the Issues noted during the 11/17/2015 investigation were communicated clearly.

Final correspondence regarding the investigation will follow in the mail.

Thank you and please contact me with any questions.

Agnieszka Hobson
Environmental Investigator
TCEQ San Antonio Regional Office
14250 Judson Rd.
San Antonio, TX 78233
Office (210) 490-3096
Direct (210) 403-4075
Fax (210) 545-4329
agnieszka.hobson@tceq.texas.gov

TCEQ EXIT INTERVIEW FORM: Potential Violations and/or Records Request				
Regulated Entity/Site Name		Vista Hills		TCEQ Add. ID No. 1330169
Investigation Type		CCI	Contact Made In-House (Y/N) Y	Purpose of Investigation Comprehensive Compliance Investigation
Regulated Entity Contact		Mr. R. Charles Wiedenfeld		Telephone No. 830-634-2321
Title		President		FAX #/Email address
				Date Contacted 11/17/2015
				FAX/Email date 01/08/2016

NOTE: The information provided in this form is intended to provide clarity to issues that have arisen during the investigation process between the TCEQ and the regulated entity named above and does not represent final TCEQ findings related to violations. Any potential or alleged violations discovered after the date on this form will be communicated to the regulated entity representative prior to the issuance of a notice of violation or enforcement. Conclusions drawn from this investigation, including additional violations or potential violations discovered (if any) during the course of this investigation, will be documented in a final investigation report.

No.	Type	Rule Citation (if known) Texas Administrative Code = TAC	Description of Issue- Notice of Violation
1	AV	30 TAC 290.42(1)	Failure to have a plant operations manual available for review.
2	AV	30 TAC 290.46(1)	Failure to flush dead end mains at monthly intervals.
3	O		If after further review additional violations or additional issues need to be addressed, you will be notified.
4	O		Photographs, work orders, invoices, receipts, and applicable records/documents along with written verification are considered acceptable compliance documentation. All compliance documentation must be submitted via fax; 210-545-4329 or regular mail; 14250 Judson Rd., San Antonio, TX 78233.

Did the TCEQ document the regulated entity named above operating without proper authorization?	<input type="checkbox"/> Yes	<input checked="" type="checkbox"/> No	N/A
Did the investigator advise the regulated entity representative that continued operation is not authorized?	<input type="checkbox"/> Yes	<input checked="" type="checkbox"/> No	N/A
Document Acknowledgment. Signature on this document establishes only that the regulated entity (RE) representative received a copy of this document and associated continuation pages on the date noted. If contact was made by telephone, the document will be sent via FAX or Email to RE; therefore, the RE signature is not required.			
Investigator Name (Signed & Printed)		Regulated Entity Representative Name (Signed & Printed)	
Date		Date	

If you have questions about any information on this form, please contact your local TCEQ Regional Office. Individuals are entitled to request and review their personal information that the agency gathers on its forms. They may also have any errors in their information corrected. To review such information, call 512/259-3392 TCEQ 20085 (4/08)

(Note: use additional pages as necessary) Page 1 of 1

2015-12-09 09:56 WIEDENFELD WATER WOR

18306342939 >>

Attachment 1-3

P 1/6
Page 1 of 2

wwwinc@hctc.net

From: "Agnieszka Hobson" <agnieszka.hobson@tceq.texas.gov>
Date: Tuesday, December 08, 2015 1:15 PM
To: [REDACTED]
Subject: FW: Emailing: heritage & vista flush records.pdf

Was the information faxed? I have not received it. Thank you.

Agnieszka Hobson
Environmental Investigator
TCEQ San Antonio Regional Office
14250 Judson Rd.
San Antonio, TX 78233
Office (210) 490-3096
Direct (210) 403-4075
Fax (210) 545-4329
agnieszka.hobson@tceq.texas.gov

From: Agnieszka Hobson
Sent: Thursday, December 03, 2015 11:45 AM
To: [REDACTED] <[REDACTED]>
Subject: RE: Emailing: heritage & vista flush records.pdf

Good morning,

Can you please fax this information to me. I will take it as compliance documentation and note and resolve the violation as I am completing the report. Compliance documentation must be faxed, mailed or delivered. We are not allowed to accept emails anymore.

Thank you.

Agnieszka Hobson
Environmental Investigator
TCEQ San Antonio Regional Office
14250 Judson Rd.
San Antonio, TX 78233
Office (210) 490-3096
Direct (210) 403-4075
Fax (210) 545-4329
agnieszka.hobson@tceq.texas.gov

TCEQ R-13 2015 DEC 09 1032

From: [REDACTED]

12/9/2015

2015-12-09 09:56 WIEDENFELD WATER WOR

18306342939 >>

Attachment 1-3

P 2/6
Page 2 of 2

Sent: Thursday, December 03, 2015 11:30 AM

To: Agnieszka Hobson <agnieszka.hobson@tceq.texas.gov>

Subject: Emailing: heritage & vista flush records.pdf

AH: We won't be able to produce flushing records for the above recently inspected systems. So, in order to help us remember to record our flushings, we've added reminders to the monthly operations chart that is left in the pumphouse during the month. This info will also be included in the operations manual being updated now. I'll forward that as completed, thanks charlie
Your message is ready to be sent with the following file or link attachments:
heritage & vista flush records.pdf

Note: To protect against computer viruses, e-mail programs may prevent sending or receiving certain types of file attachments. Check your e-mail security settings to determine how attachments are handled.

12/9/2015

MONTHLY OPERATIONS REPORT

Name of System: Heritage Park No. of active services: _____
 Address: 279 Burney Rd. N. Month: _____ Yr: _____
 Water System I.D. # 1330080

Day of Month	Well Master	Daily	Well (gpm)	Cl2 Res. (gpm)	Cl2 Filled Gal/brk	Seq. Agt Gal/brk	Pr. Tank Alt/ntf (*)	Booster Pmp #1	Booster Pmp #2	Iron	PO4
18											
19											
20											
21											
22											
23											
24											
25											
26											
27											
28											
29											
30											
31											
1											
2											
3											
4											
5											
6											
7											
8											
9											
10											
11											
12											
13											
14											
15											
16											
17											
18											
19											
20											

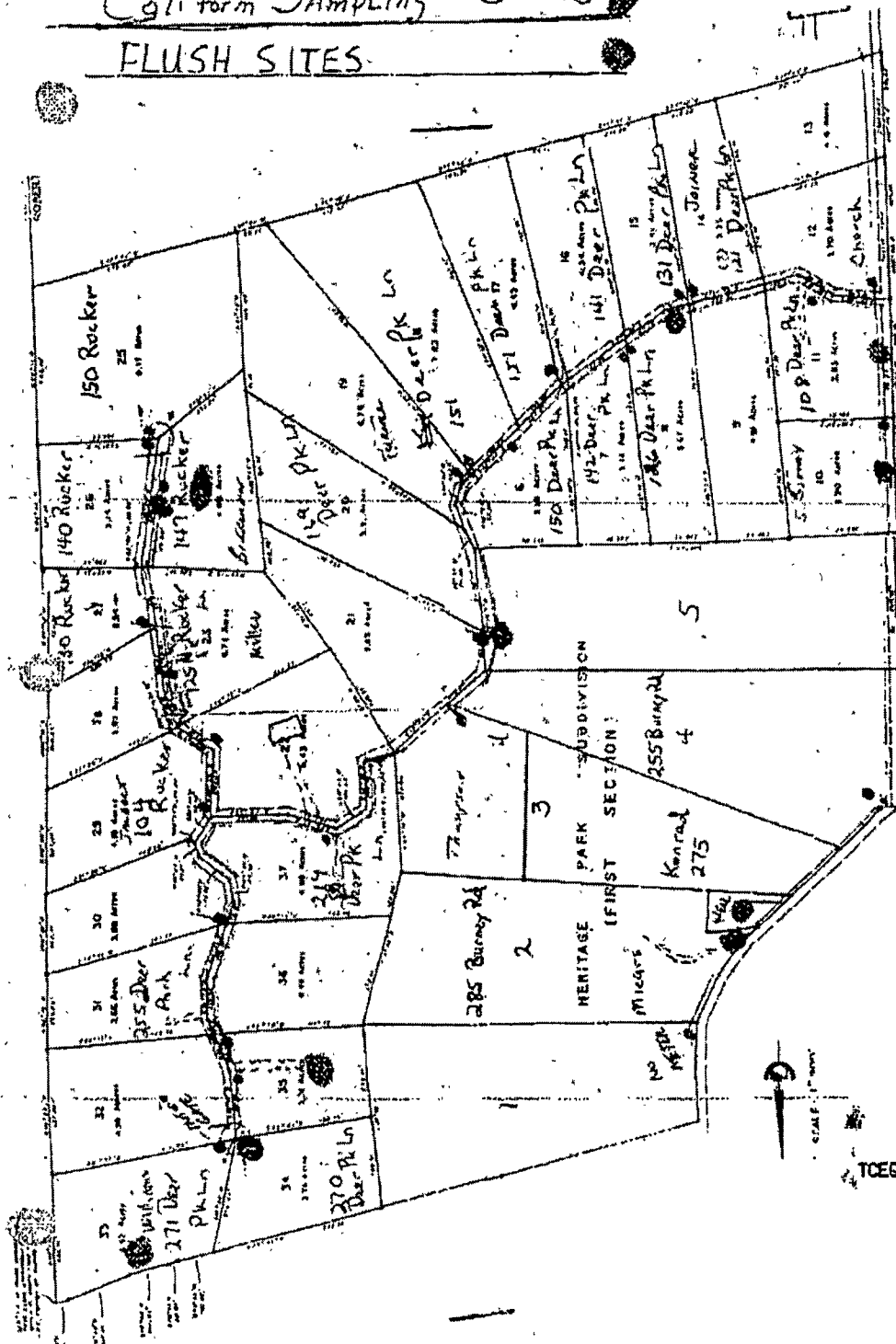
↑ # = _____ Low _____ High _____
 sample site

Flushing record

Submitted by: _____ (circle one)
 Certificate No: WG0003747 Sample Site 1) 285 Burney Rd. (Miers) (YF)
 Comments/notes _____ Sample Site 2) 279 Burney Rd. (WWW) (HF)
 Point of entry: pump house Sample Site 3) 147 Rucker (Tippit) (YF)
 Sample Site 4) 260 Deer Park (Connors) (YF)
 Sample Site 5) 271 Deer Park (Williams) (YF)
 Flush Site 1) Lot 11 - 108 Deer Park Ln Flush Site 2) Lot 8 - 126 Deer Park Ln
 Flush Site 3) Lot 5 - 168 Deer Park Ln Flush Site 4) Lot 34 - 270 Rucker Ln
 Flush Site 5) Lot 24 - 147 Rucker Ln

TCEG R-13 2015 DEC 09 1032

Coliform Sampling Sites FLUSH SITES



TCE9 R-13 2015 DEC 09 10:32

MONTHLY OPERATIONS REPORT

Name of System: Vista Hills

No. of active services: _____

Address: 125 Vista Hills

Month: _____ Yr: _____

Water System I.D. # 1330169

Day of Month	Well Marlet	Daily	Well (gpm)	Chlor. (ppm)	Cliffed Galink	Seepage Galink	Pr. Tank Alt/wtr (%)	Booster Pmp #1	#2	Iron	FO4
18											
19											
20											
21											
22											
23											
24											
25											
26											
27											
28											
29											
30											
31											
1											
2											
3											
4											
5											
6											
7											
8											
9											
10											
11											
12											
13											
14											
15											
16											
17											
18											
19											
20											

↑ # _____ w _____ Low _____ High _____
sample site

Flush log record

↑

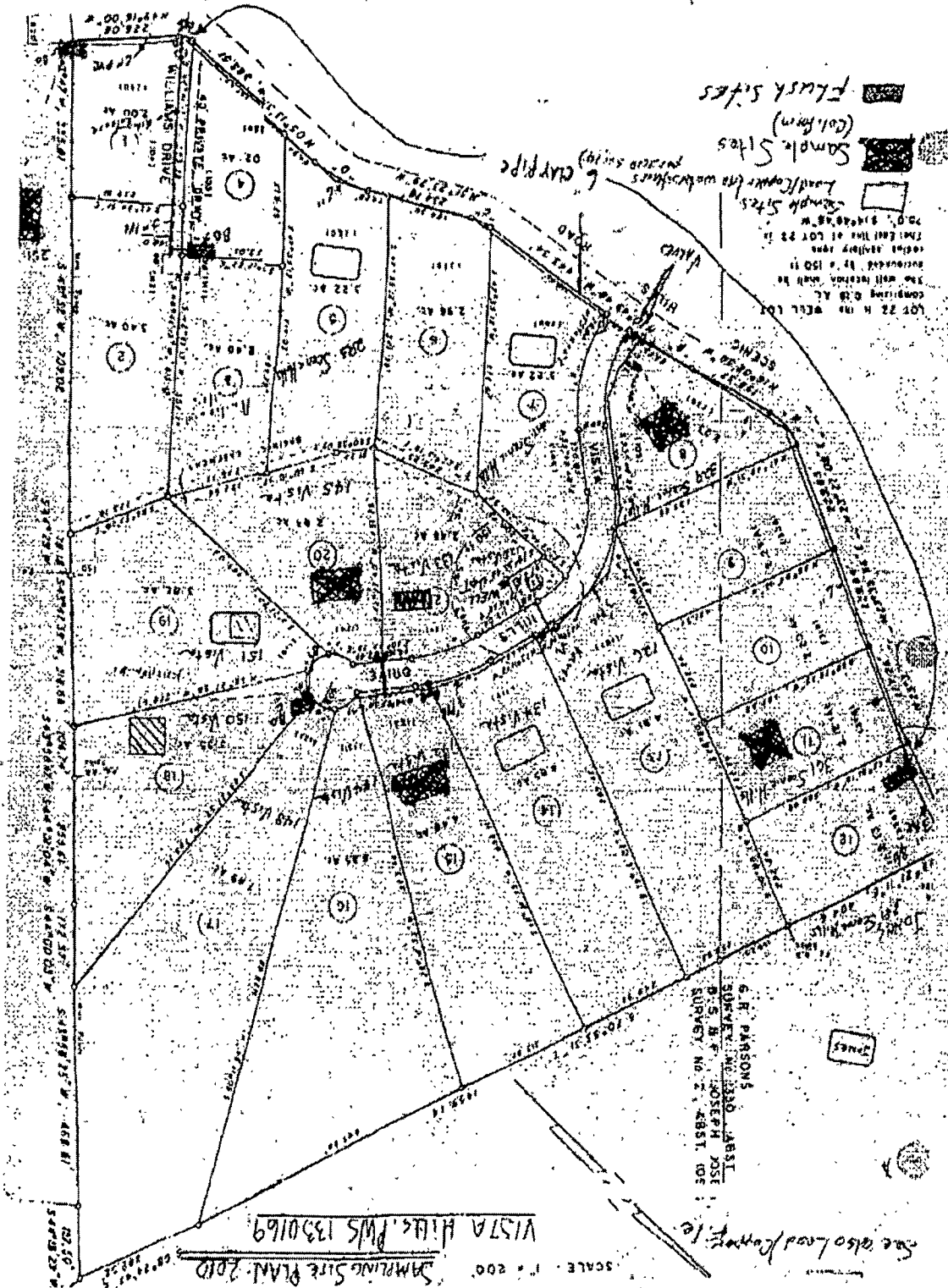
(circle one)

Submitted by: _____

Certificate No: WG0003747

Comments/notes _____

Sample Site 1) 134 Vista Hills Dr.Sample Site 2) 142 Vista HillsSample Site 3) 145 Vista Hills Dr.Sample Site 4) 251 Scenic Hills Dr.Sample Site 5) 329 Scenic Hills Dr.Flush Site 1) Lot 12 - 371 Scenic HillsFlush Site 2) Lot 18 - 150 Vista HillsFlush Site 3) Lot 1 - 251 Scenic Hills



Agnieszka Hobson

From: [REDACTED]
Sent: Thursday, December 03, 2015 11:30 AM
To: Agnieszka Hobson
Subject: Emailing: heritage & vista flush records.pdf
Attachments: heritage & vista flush records.pdf

AH: We won't be able to produce flushing records for the above recently inspected systems. So, in order to help us remember to record our flushings, we've added reminders to the monthly operations chart that is left in the pumphouse during the month. This info will also be included in the operations manual being updated now. I'll forward that as completed. thanks charlie

Your message is ready to be sent with the following file or link attachments:
heritage & vista flush records.pdf

Note: To protect against computer viruses, e-mail programs may prevent sending or receiving certain types of file attachments. Check your e-mail security settings to determine how attachments are handled.

1CE0 R-13 2015 DEC 03 11:48

MONTHLY OPERATIONS REPORT

10:00 AM DEC 03 2015

Name of System: Heritage Park No. of active services: _____
 Address: 279 Burney Rd. N. Month: _____ Yr: _____
 Water System I.D. # 1330080

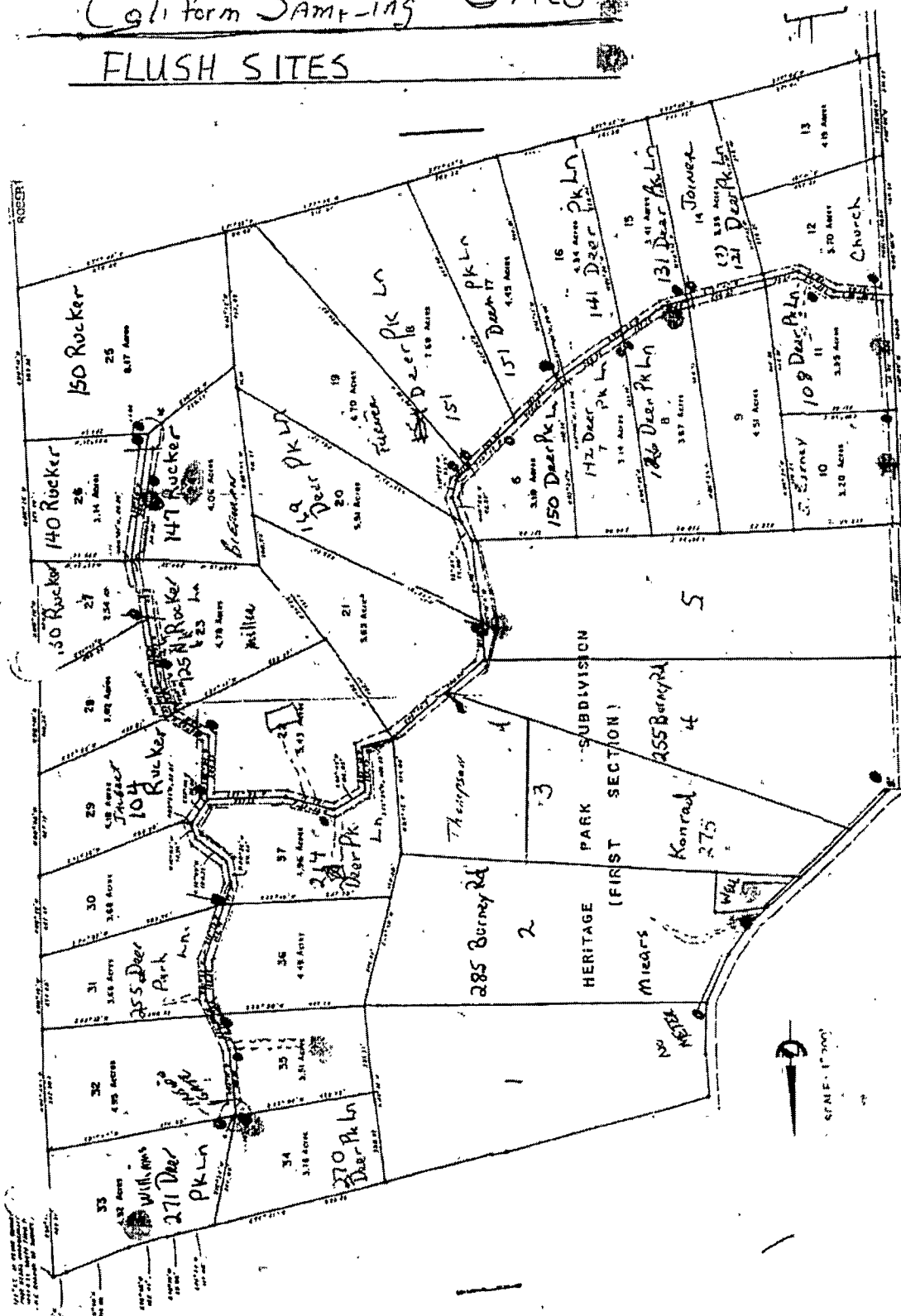
Day of Month	Well Master	Daily	Well (gpm)	Cl2.res. (ppm)	Cl2filled Gal/tnk	Seq.Agt Gal/tnk	Pr.Tank Air/wtr (*)	Booster Pmp #1	#2	Iron	PO4
18											
19											
20											
21											
22											
23											
24											
25											
26											
27											
28											
29											
30											
31											
1											
2											
3											
4											
5											
6											
7											
8											
9											
10											
11											
12											
13											
14											
15											
16											
17											
18											
19											
20											

↑ # _____ = _____ Low _____ High _____
 sample site

Flushing record

Submitted by: _____ (circle one)
 Certificate No: WG0003747 Sample Site 1) 285 Burney Rd. (Miers) (YF)
 Comments/notes _____ Sample Site 2) 279 Burney Rd. (WWW) (HF)
 Point of entry: pump house Sample Site 3) 147 Rucker (Tippit) (YF)
 Sample Site 4) 260 Deer Park (Conners) (YF)
 Sample Site 5) 271 Deer Park (Williams) (YF)
 Flush Site 1) Lot 11 - 108 Deer Park Ln Flush Site 2) Lot 8 - 126 Deer Park Ln
 Flush Site 3) Lot 5 - 168 Deer Park Ln Flush Site 4) Lot 34 - 270 Rucker Ln
 Flush Site 5) Lot 24 - 147 Rucker Ln

FLUSH SITES



1245. Q. Now.

[illegible]

Bryan W. Shaw, Ph.D., P.E., *Chairman*
Toby Baker, *Commissioner*
Jon Niermann, *Commissioner*
Richard A. Hyde, P.E., *Executive Director*



TEXAS COMMISSION ON ENVIRONMENTAL QUALITY

Protecting Texas by Reducing and Preventing Pollution

May 26, 2016

Mr. Gary Rose, Operations Manager
Southwest Water Company
1620 Grand Avenue Parkway, Ste., 140
Pflugerville, Texas 78660

Re: Comprehensive Compliance Investigation at:
Westwood Park Subdivision, .5 mile W of Comfort off Hwy 27, Kerr County,
Texas
Regulated Entity No.: RN101285476
TCEQ ID No.: 1330015, Investigation No.: 1323105

Dear Mr. Rose:

On March 24, 2016, Mrs. Stacy Anderson of the Texas Commission on Environmental Quality (TCEQ) San Antonio Region Office conducted an investigation of the above-referenced facility to evaluate compliance with applicable requirements for a public water supply. No violations are being alleged as a result of the investigation.

The TCEQ appreciates your assistance in this matter and your compliance efforts to ensure protection of the State's environment. If you or members of your staff have any questions regarding these matters, please feel free to contact Mrs. Anderson in the San Antonio Region Office at (210) 403-4078.

Sincerely,

A handwritten signature in black ink, appearing to read "Joy Thurston-Cook".

Joy Thurston-Cook
Water Section Team Leader
San Antonio Region Office

JTC/sa/eg

Bryan W. Shaw, Ph.D.; P.E., *Chairman*
Toby Baker, *Commissioner*
Jon Niemann, *Commissioner*
Richard A. Hyde, P.E., *Executive Director*



TEXAS COMMISSION ON ENVIRONMENTAL QUALITY

Protecting Texas by Reducing and Preventing Pollution

May 26, 2016

Mr. Gary Rose, Operations Manager
Southwest Water Company
1620 Grand Avenue Parkway, Ste., 140
Pflugerville, Texas 78660

Re: Comprehensive Compliance Investigation at:
Windwood Oaks Water System, 1.5 miles W of SH 173 on Hwy 2271, Kerr
County, Texas
Regulated Entity No.: RN102681996
TCEQ ID No.: 1330141, Investigation No.: 1323104

Dear Mr. Rose:

On March 24, 2016, Mrs. Stacy Anderson of the Texas Commission on Environmental Quality (TCEQ) San Antonio Region Office conducted an investigation of the above-referenced facility to evaluate compliance with applicable requirements for a public water supply. No violations are being alleged as a result of the investigation.

The TCEQ appreciates your assistance in this matter and your compliance efforts to ensure protection of the State's environment. If you or members of your staff have any questions regarding these matters, please feel free to contact Mrs. Anderson in the San Antonio Region Office at (210) 403-4078.

Sincerely,

A handwritten signature in cursive script, appearing to read "Joy Thurston-Cook".

Joy Thurston-Cook
Water Section Team Leader
San Antonio Region Office

JTC/sa/eg

Bryan W. Shaw, Ph.D., P.E., *Chairman*
Toby Baker, *Commissioner*
Jon Niermann, *Commissioner*
Richard A. Hyde, P.E., *Executive Director*



TEXAS COMMISSION ON ENVIRONMENTAL QUALITY

Protecting Texas by Reducing and Preventing Pollution

June 1, 2016

Mr. Gary Rose, Operations Manager
Southwest Water Company
1620 Grand Avenue Parkway, Ste., 140
Pflugerville, Texas 78660-2185

Re: Compliance Evaluation Investigation at:
Woodhaven Mobile Home Park, Kerr County, Texas
Regulated Entity No.: RN101266070

TCEQ ID No.: 1330024, Investigation No.: 1323106

Dear Mr. Rose:

On March 24, 2016, Mrs. Stacy Anderson of the Texas Commission on Environmental Quality (TCEQ) San Antonio Region Office conducted an investigation of the above-referenced facility to evaluate compliance with applicable requirements for public water supply. No violations are being alleged as a result of the investigation.

The TCEQ appreciates your assistance in this matter and your compliance efforts to ensure protection of the State's environment. If you or members of your staff have any questions regarding these matters, please feel free to contact Mrs. Anderson in the San Antonio Region Office at (210) 403-4078.

Sincerely,

A handwritten signature in cursive script, appearing to read "Joy Thurston-Cook".

Joy Thurston-Cook
Water Section Team Leader
San Antonio Region Office

JTC/sa/eg

Bryan W. Shaw, Ph.D., P.E., *Chairman*
Toby Baker, *Commissioner*
Jon Niemann, *Commissioner*
Richard A. Hyde, P.E., *Executive Director*



TEXAS COMMISSION ON ENVIRONMENTAL QUALITY

Protecting Texas by Reducing and Preventing Pollution

June 10, 2016

Mr. Raymond C. Wiedenfeld, President
Wiedenfeld Water Works, Inc.
P. O. Box 418
Center Point, Texas 78010-0418

Re: Notice of Compliance for Compliance Evaluation Investigation at:
Platten Creek Water System, Kendall County, Texas
Regulated Entity No.: RN101206829, TCEQ ID No.: 1300035
Investigation: 1335348

Dear Mr. Wiedenfeld:

On April 25-26, 2016, Mr. Colby Maron of the Texas Commission on Environmental Quality (TCEQ) San Antonio Region Office conducted a comprehensive compliance investigation of the above-referenced operation to evaluate compliance with applicable requirements for a public water supply. No violations are being alleged as a result of the investigation. However, please note the Additional Issue listed in the attached Summary of Investigation Findings.

The TCEQ appreciates your assistance in this matter and your compliance efforts to ensure protection of the State's environment. If you or members of your staff have any questions regarding these matters, please feel free to contact Mr. Maron in the San Antonio Region Office at 210/403-4024.

Sincerely,

A handwritten signature in black ink, appearing to read "Joy Thurston-Cook".

Joy Thurston-Cook
Water Section Team Leader
San Antonio Region Office

JTC/CM/eg

cc: Mr. Tim Williford, South West Water Company

Summary of Investigation Findings

PLATTEN CREEK WATER SYSTEM

Investigation #

1335348

Investigation Date: 04/25/2016

, KENDALL COUNTY,

Additional ID(s): 1300035

No Violations Associated to this Investigation

ADDITIONAL ISSUES

Description

Item 1

Additional Comments

At the time of the investigation, it was noted that livestock watering troughs and above ground pools were located at residential connections but the status of backflow and cross-connection prevention could not be determined. The entity must ensure that the potential contamination hazards are evaluated, and if necessary, eliminated or isolated from the public water system.