



Control Number: 45570



Item Number: 212

Addendum StartPage: 0

PUC DOCKET NO. 45570
SOAH DOCKET NO. 473-16-2873.WS

RECEIVED
2016 JUN 30 AM 11:28

APPLICATION OF MONARCH § BEFORE THE STATE OFFICE
UTILITIES I, L.P. TO CHANGE RATES § OF
FOR WATER AND SEWER SERVICE § ADMINISTRATIVE HEARINGS

**MONARCH UTILITIES I, L.P.'S RESPONSES TO OFFICE OF
PUBLIC UTILITY COUNSEL'S FOURTH REQUEST FOR INFORMATION**

To: Office of Public Utility Counsel, by and through its attorney of record, Christiaan Siano, Assistant Public Counsel, 1701 North Congress Avenue, Suite 9-180, P. O. Box 12397, Austin, Texas 78711-2397.

Monarch Utilities I, L.P. ("Monarch") files its Responses to the Office of Public Utility Counsel's ("OPUC") Fourth Requests for Information received May 9, 2016. This response is timely filed. This response may be treated by all parties as if it were filed under oath.

Respectfully submitted,

**LLOYD, GOSSELINK,
ROCHELLE & TOWNSEND, P.C.**
816 Congress Avenue, Suite 1900
Austin, Texas 78701
Telephone: (512) 322-5800
Facsimile: (512) 472-0532



LAMBETH TOWNSEND
State Bar No. 20167500
ltownsend@lglawfirm.com

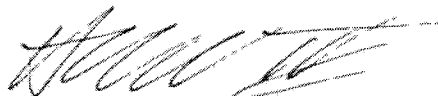
GEORGIA N. CRUMP
State Bar No. 05185500
gcrump@lglawfirm.com

WILLIAM A. FAULK, III
State Bar No. 24075674
cfaulk@lglawfirm.com

ATTORNEYS FOR MONARCH UTILITIES I, LP

CERTIFICATE OF SERVICE

I hereby certify that on this 29th day of June, 2016, a true and correct copy of the foregoing document has been hand-delivered., sent via facsimile, e-mail, or first class mail to all parties of record.



WILLIAM A. FAULK, III

PUC DOCKET NO. 45570
SOAH DOCKET NO. 473-16-2873.WS

MONARCH'S RESPONSES TO OPUC'S FOURTH REQUESTS FOR INFORMATION

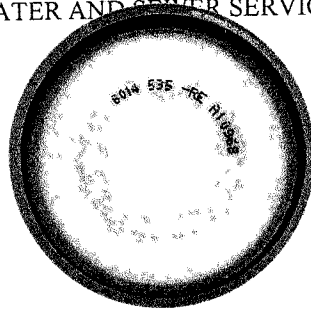
OPUC RFI 4-1: Referencing WP II-D-1.1, please provide, in Excel compatible format, a list of the general ledger transactions specific to Account No. 775 that comprise the \$1,566,591 in miscellaneous expense for the Test Year. Within this listing, please provide a description of the transaction as well as the amount of each transaction.

RESPONSE: The balance in Account No. 775 was adjusted from \$1,566,591 to \$1,050,219. Please see Attachment OPUC 4-1, attached digitally in compact disc form, for details of the \$1,050,219 total.

Prepared by: Carmelitha Bordelon-Taylor
Sponsored by: Carmelitha Bordelon-Taylor

PUC DOCKET NO. 45570
MONARCH UTILITIES I, LP.
TO CHANGE RATES FOR
WATER AND SEWER SERVICE

June 30, 2016



June 30, 2016

MONARCH UTILITIES I, LP
RESPONSES TO
OPUC'S 4TH RFIS

PUC DOCKET NO. 45570
SOAH DOCKET NO. 473-16-2873.WS

MONARCH'S RESPONSES TO OPUC'S FOURTH REQUESTS FOR INFORMATION

OPUC RFI 4-2: **Please reconcile the adjusted Test Year End number of connections by meter size shown in Column P of Schedule II-G-2.1(W) with the Test Year End number of connections by meter size used on Schedule III(W) in Lines 216 through 224. Provide an explanation of all differences.**

RESPONSE: Test-year end connections are shown in column (n) of Schedule II-G-2.1(W) and the current (as known at filing date) connections were shown in column (p). See Attachment OPUC 4-2 for a reconciliation breakdown between those and the number of meters used for rate design on lines 216 through 224 on Schedule III(W). The primary differences going from Schedule II-G-2.1(W) to Schedule III(W) are the loss of customers in Blue Mound and Midway and the conversion of the wholesale customers to meter equivalents.

Prepared by: George Freitag
Sponsored by: George Freitag

Line	(a) WATER CONNECTIONS Meter Size	(b) Schedule II-G-2.1 (W) column (n)		(c) €			(d)			(e)			(f)		(g)		(h)		(i)		(j)	
		Meters at 06/2015	LESS Blue Mound	LESS Midway	Wholesale Equivalents	Misc. Adjustments	Adjusted Total	TY End Meters	Net Changes from TY	Schedule II-G-2.1 (W) column (p)	As of Dec. 2015	As of Dec. 2015	As of Dec. 2015	As of Dec. 2015	As of Dec. 2015	As of Dec. 2015	As of Dec. 2015	As of Dec. 2015	As of Dec. 2015	As of Dec. 2015	As of Dec. 2015	As of Dec. 2015
1	5/8"	23,215	(783)			22,011	22,011	117		22,128												
2	3/4"	54	(1)			53	53	(3)		50												
3	1"	150	(1)			146	146	-		148												
4	1 1/2"	27	(3)			24	24	1		24												
5	2"	51				51	51	(1)		47												
6	3"	3				3	3	-		3												
7	4"	2				2	2	-		2												
8	8"	1				1	1	-		1												
9	Wholesale	1				1	1	-		1												
10	Lakeshore (at 85% of 2 inch rate)	1				1	1	(469)		470												
11	Sutton (base no. gallonage per agreement)							2		2												
12	Result	23,503	(788)	(415)	470	22,764	22,762	(1)		22,762												

PUC DOCKET NO. 45570
SOAH DOCKET NO. 473-16-2873.WS

MONARCH'S RESPONSES TO OPUC'S FOURTH REQUESTS FOR INFORMATION

OPUC RFI 4-3: **Please reconcile the adjusted Test Year End number of connections by meter size shown in Column P of Schedule II-G-2.1(S) with the Test Year End number of connections by meter size used on Schedule III(S) in Lines 204 through 214. Provide an explanation of all differences.**

RESPONSE: Test-year end connections are shown in column (n) of Schedule II-G-2.1(S) and the current (as known at filing date) connections were shown in column (p). See Attachment OPUC 4-3 for a reconciliation breakdown between those and the number of connections used for rate design on lines 204 through 214 on Schedule III(S). The primary differences going from Schedule II-G-2.1(S) to Schedule III(S) are the loss of customers in Blue Mound, the conversion of the wholesale customers to meter equivalents, and the combination of sewer only customers with residential meters for rate design purposes.

Prepared by: George Freitag
Sponsored by: George Freitag

Line	(a) SEWER CONNECTIONS	(b) Schedule II-G-2.1 (S) Column (n) Meters at 06/2015	(c) LESS Blue Mound	(d) ADJUSTMENTS Wholesale Equivalents	(e) Misc. Adjustments (see Note)	(f) Adjusted Total	(g) Schedule III(S) lines 204 - 214 TY End Meters	(h) Net Changes from TY	(i) Schedule II-G-2.1 (S) column (p) As of Dec. 2015
1	5/8"	4,168	(773)	46	152	3,593	3,593	(127)	3,466
2	3/4"	23	(1)			22	22	(1)	21
3	1"	20	(1)			19	19	-	19
4	1 1/2"	9	(2)			7	7	-	7
5	2"	12	(4)			8	8	-	8
6	3"	-				-	-	-	-
7	4"	1				1	1	-	1
8	8"	-			(152)	-	-	-	-
9	# (sewer only)	153	(1)			-	-	152	152
10	Result	4,386	(782)	46	-	3,650	3,650	24	3,674

NOTE: # (sewer only) customers are billed at 5/8" meter base rate

**PUC DOCKET NO. 45570
SOAH DOCKET NO. 473-16-2873.WS**

MONARCH'S RESPONSES TO OPUC'S FOURTH REQUESTS FOR INFORMATION

OPUC RFI 4-4: Please provide a copy of Schedules III(W) and III(S) with all excel formulas intact and functional. To the extent these schedules link to other numbers within the Draft RFP, please provide a working copy showing appropriate linkages.

RESPONSE: Please see Schedule III (W) and Schedule III (S) included the electronic copies of the amended schedules and workpapers, that was part of Monarch's Errata No. 8 filing in this proceeding.

Prepared by: Kiki Carlson
Sponsored by: Robert Kelly

**PUC DOCKET NO. 45570
SOAH DOCKET NO. 473-16-2873.WS**

MONARCH'S RESPONSES TO OPUC'S FOURTH REQUESTS FOR INFORMATION

OPUC RFI 4-5: **Referencing WP II-D-1.1, line 21 – Account 701; Salaries and Wages – Employees, please explain and provide documentation supporting a negative per book value of (\$6,151).**

RESPONSE: The balance in 701 is the net of the following items:

661030	Capitalized Overhead	(19,443.66)
690510	Allocated Salaries & Wages	13,042.81
690900	Direct Labor Charged	250.22
Grand Total		(6,150.63)

Prepared by: Carmelitha Bordelon-Taylor
Sponsored by: Carmelitha Bordelon-Taylor