



Control Number: 45180



Item Number: 19

Addendum StartPage: 0



AUSTIN WATER  
Utility Development Services Division  
625 East 10<sup>th</sup> Street, Suite 715  
Austin, Texas 78701



June 20, 2016

Public Utility Commission of Texas  
Central records  
1701 Congress Ave., Suite 8-100  
Austin, Texas 78701

RECEIVED  
2016 JUN 20 PM 2:14  
PUBLIC UTILITY COMMISSION  
FILING CLERK

Re: City of Austin  
Application to Amend Certificates of Convenience and Necessity  
Docket No. 45180

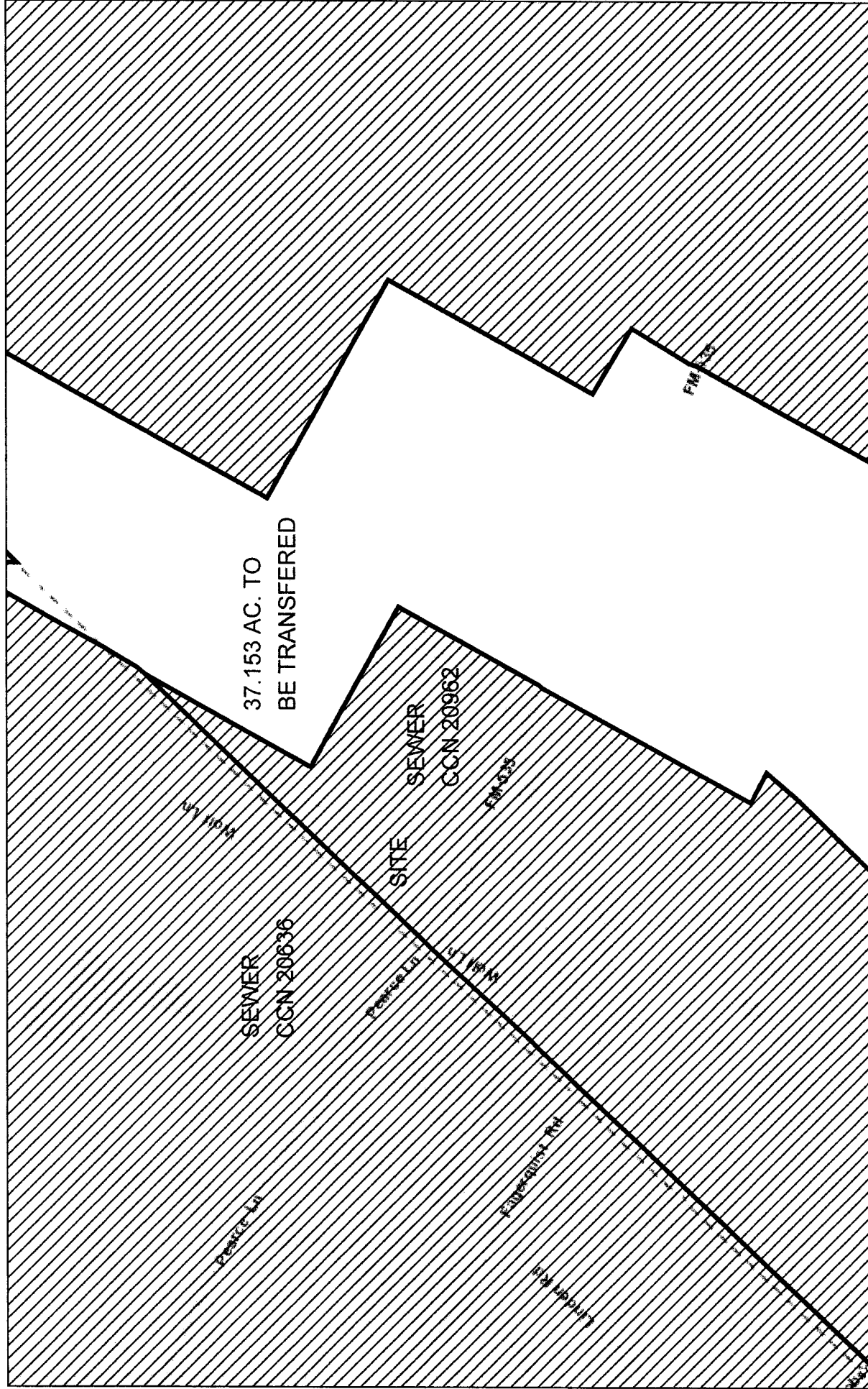
In response to Order No. 6, Docket No. 45180, I've attached 10 sets which include a small and large scale maps and full scale agreement map.

If we can provide additional information, please call me at (512) 972-0232 or email me at [phillip.jaeger@austintexas.gov](mailto:phillip.jaeger@austintexas.gov).

Sincerely,

A handwritten signature in black ink, appearing to read "Phillip Jaeger".  
Phillip Jaeger  
Utility Development Services Division  
Austin Water Utility

# WOLF CREEK PRELIMINARY-CCN



May 26, 2016

 Sewer CCN Service Areas

1:36,112

0 0.3 0.6 1.2 mi  
0 0.5 1 2 km

Sources: Esri, HERE, DeLorme, USGS, Intermap, increment P Corp., NRCAN, Esri Japan, METI, Esri China (Hong Kong), Esri (Thailand),

CCN CONTROL NUMBER: 45180



GIS DATA BASED ON TEXAS STATE PLANE  
COORDINATE SYSTEM OF SEWER CCN 20636 AND  
SEWER CCN 20962 PROVIDED BY THE  
TEXAS PUBLIC UTILITY COMMISSION.

N10029254.1400  
E3172568.0300

N10028815.3047  
E3173390.3442

37.153 AC.

37.153 ACRES  
AREA TO BE TRANSFERED FROM  
CITY OF AUSTIN SEWER CCN  
20636 TO AQUA WSC SEWER  
CCN 20962

SEWER CCN 20636

WOLF LANE

DMSION BETWEEN SEWER CCN  
20636 AND 20962

SEWER CCN 20962

N10026162.8502  
E3170984.7709

PROPERTY BOUNDARY PER  
JAMES E. GARON AND  
ASSOCIATES SURVEY, JULY  
14, 2014

PEARCE LANE



1 inch = 1000 ft.

OVERSIZED DOCUMENT

MAP

TO VIEW OVERSIZED  
DOCUMENTS, PLEASE CONTACT  
CENTRAL RECORDS AT  
512-936-7180