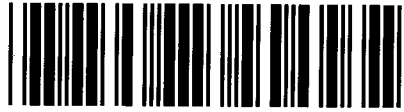


Control Number: 44621



Item Number: 9

Addendum StartPage: 0

RECEIVED

DOCKET NO. 44621

2015 MAY 15 AM 11:24

APPLICATION OF YES PREP PUBLIC §
SCHOOLS AND SUBURBAN UTILITY §
CO TO DECERTIFY YES PREP §
PROPERTY FROM SUBURBAN WATER §
COMPANY'S CERTIFICATED §
SERVICE AREA §

PUBLIC UTILITY COMMISSION
PUBLIC UTILITIES COMMISSION
OF TEXAS

**SUPPLEMENT OF MAPPING INFORMATION TO JOINT APPLICATION FOR
DECERTIFICATION OF YES PREP PROPERTY FROM SUBURBAN UTILITY CO.'S
CERTIFICATED WATER SERVICE AREA**

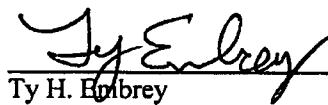
COMES NOW YES Prep Public Schools Inc. (YES Prep) and files this Supplement to the Joint Application for Removal of YES Prep Property from Suburban Utility CO.'s (Suburban's) Retail Water Certificated Service Area (CCN No. 10835).

1. YES Prep and Suburban filed a Joint Application to remove YES Prep's property from Suburban's Water CCN No. 10835 with the Public Utility Commission (the Commission) on April 16, 2015.
2. On May 12, 2015, the Commission entered Order No. 2, which required mapping data to be provided in order to continue processing the application.
3. YES Prep now files with the Commission a hard copy map and a digital map data disk to supplement and complete this joint application.

DATED: May 15, 2015

Respectfully Submitted,

YES PREP PUBLIC SCHOOLS



Ty H. Embrey
Texas State Bar No. 24025346
Lloyd, Gosselink, Rochelle & Townsend, PC
816 Congress Avenue, Suite 1900
Austin, Texas 78701
(512) 322-5829
(512)-472-0532 (facsimile)
tembrey@lglawfirm.com

DOCKET NO. 44621
CERTIFICATE OF SERVICE

I certify that a copy of this document will be served on all parties of record on May 15, 2015, in accordance with P.U.C. Procedural Rule 22.74.

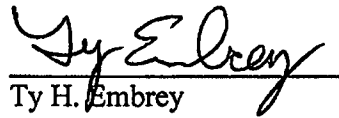
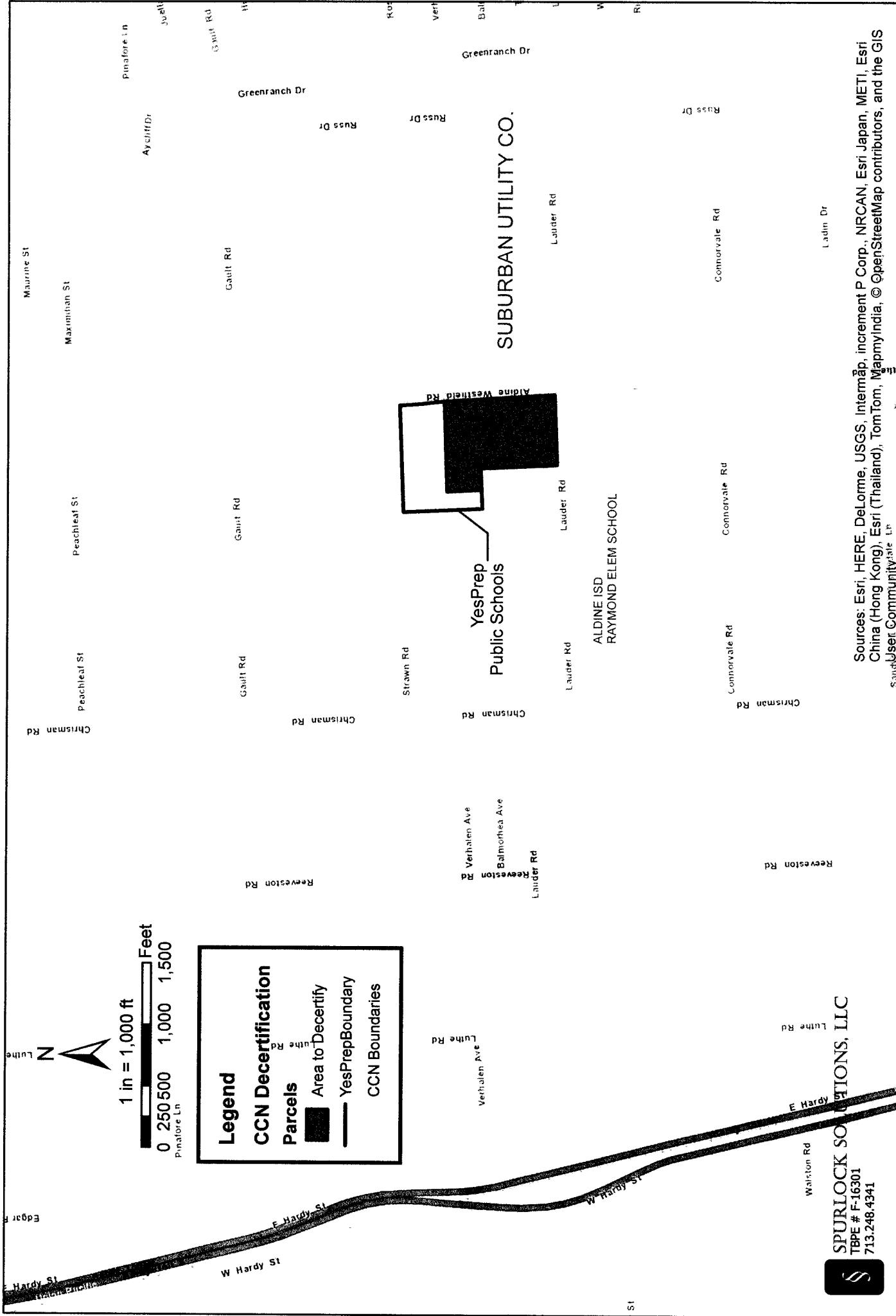

Ty H. Embrey

EXHIBIT A

**Hard Copy Map of YES Prep Area to Decertify from Suburban Utility
Service Area**

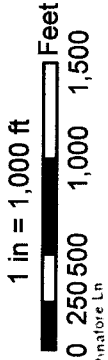
Docket No. 44621: YesPrep Public Schools
 Decertify Portion of Suburban Utility Co, CCN No. 10835
 Harris County



Legend

CCN Decertification Parcels

- Area to Decertify
- YesPrep Boundary
- CCN Boundaries



YesPrep Public Schools

ALDINE ISD
 RAYMOND ELEM SCHOOL

SUBURBAN UTILITY CO.

SPURLOCK SOLUTIONS, LLC
 TBPE # F-16301
 713.248.4341

Sources: Esri, HERE, DeLorme, USGS, Intermap, increment P Corp., NRCAN, Esri Japan, METI, Esri China (Hong Kong), Esri (Thailand), TomTom, MapmyIndia, © OpenStreetMap contributors, and the GIS User Community

EXHIBIT B

Digital Map Data Disks (2 copies attached to original)