

Application for a Rate/Tariff Change - SWWC Utilities, Inc.

Appendix 10 - Revenue Requirement Calculations

Connections	Water	Sewer
% of Total	2,003	1,934
	50.88%	49.12%

Table Appendix 10.II.A - Hornsby Bend Utility Company Revenue Requirement Detail

Company	Category	Report Line	TCEQ Account Title	G/L Account	Account Description	Amount Per Books	Normalizing Adjustments	Per Books As Adjusted	Water Total	Sewer Total
Hornsby Bend Utility Company	Water	1	Utility Service / Sales	410005	Consumption-Based Revenue	\$ (739,640)	\$ -	\$ (739,640)	\$ (739,640)	\$ -
Hornsby Bend Utility Company	Water	1	Utility Service / Sales	420040	Water Service	\$ (852,730)	\$ -	\$ (852,730)	\$ (852,730)	\$ -
Hornsby Bend Utility Company	Water	1	Utility Service / Sales	430000	Unbilled Revenues	\$ (26,317)	\$ 26,317	\$ -	\$ -	\$ -
Hornsby Bend Utility Company	Sewer	1	Utility Service / Sales	410005	Consumption-Based Revenue	\$ (708,681)	\$ -	\$ (708,681)	\$ -	\$ (708,681)
Hornsby Bend Utility Company	Sewer	1	Utility Service / Sales	420030	Wastewater Service	\$ (805,325)	\$ -	\$ (805,325)	\$ -	\$ (805,325)
Hornsby Bend Utility Company	Sewer	1	Utility Service / Sales	430000	Unbilled Revenues	\$ (12,312)	\$ 12,312	\$ -	\$ -	\$ -
Hornsby Bend Utility Company	Common	1	Utility Service / Sales	410000	Base Fee Revenue	\$ 24,411	\$ -	\$ 24,411	\$ 12,419	\$ 11,992
Hornsby Bend Utility Company	Common	1	Utility Service / Sales	420040	Water Service	\$ 383	\$ -	\$ 383	\$ 195	\$ 188
Hornsby Bend Utility Company	Common	1	Utility Service / Sales	420080	Wholesale Revenue	\$ (12,674)	\$ -	\$ (12,674)	\$ (6,448)	\$ (6,226)
Hornsby Bend Utility Company	Common	1	Utility Service / Sales	430000	Unbilled Revenues	\$ (895)	\$ 895	\$ -	\$ -	\$ -
<b>Utility Service / Sales Total</b>						<b>\$ (3,133,778)</b>	<b>\$ 39,524</b>	<b>\$ (3,094,254)</b>	<b>\$ (1,586,203)</b>	<b>\$ (1,508,051)</b>
Hornsby Bend Utility Company	Water	3	Other Revenues	420020	Tap Fees	\$ (33,232)	\$ -	\$ (33,232)	\$ (33,232)	\$ -
Hornsby Bend Utility Company	Water	3	Other Revenues	450030	Penalties and Fees	\$ (200)	\$ -	\$ (200)	\$ (200)	\$ -
Hornsby Bend Utility Company	Water	3	Other Revenues	450100	Rental Revenue	\$ (1,000)	\$ -	\$ (1,000)	\$ (1,000)	\$ -
Hornsby Bend Utility Company	Water	3	Other Revenues	480000	Other Revenue	\$ (4,500)	\$ -	\$ (4,500)	\$ (4,500)	\$ -
Hornsby Bend Utility Company	Sewer	3	Other Revenues	420020	Tap Fees	\$ (22,200)	\$ -	\$ (22,200)	\$ -	\$ (22,200)
Hornsby Bend Utility Company	Sewer	3	Other Revenues	450030	Penalties and Fees	\$ (100)	\$ -	\$ (100)	\$ -	\$ (100)
Hornsby Bend Utility Company	Common	3	Other Revenues	450030	Penalties and Fees	\$ (77,320)	\$ -	\$ (77,320)	\$ (39,337)	\$ (37,982)
Hornsby Bend Utility Company	Common	3	Other Revenues	480000	Other Revenue	\$ (872)	\$ -	\$ (872)	\$ (444)	\$ (428)
<b>Other Revenues Total</b>						<b>\$ (139,424)</b>	<b>\$ -</b>	<b>\$ (139,424)</b>	<b>\$ (78,713)</b>	<b>\$ (60,711)</b>
Hornsby Bend Utility Company	Common	4	Salaries and Wages	Various	Salaries and Wages	\$ 139,523	\$ 16,786	\$ 156,309	\$ 82,381	\$ 73,928
<b>Salaries and Wages Total</b>						<b>\$ 139,523</b>	<b>\$ 16,786</b>	<b>\$ 156,309</b>	<b>\$ 82,381</b>	<b>\$ 73,928</b>
Hornsby Bend Utility Company	Water	5	Contract Labor	540105	Contract Svcs Exp	\$ 7,610	\$ -	\$ 7,610	\$ 7,610	\$ -
Hornsby Bend Utility Company	Water	5	Contract Labor	690580	Alloc Subcontract	\$ 2,060	\$ -	\$ 2,060	\$ 2,060	\$ -
Hornsby Bend Utility Company	Sewer	5	Contract Labor	540105	Contract Svcs Exp	\$ 11,010	\$ -	\$ 11,010	\$ -	\$ 11,010

Application for a Rate/Tariff Change - SWWC Utilities, Inc.

Appendix 10 - Revenue Requirement Calculations

Connections	Water	Sewer
% of Total	2,003	1,934
	50.88%	49.12%

Table Appendix 10.II.A - Hornsby Bend Utility Company Revenue Requirement Detail

Company	Category	Report Line	TCEQ Account Title	G/L Account	Account Description	Amount Per Books	Normalizing Adjustments	Per Books As Adjusted	Water Total	Sewer Total
Hornsby Bend Utility Company	Sewer	5	Contract Labor	690580	Alloc Subcontract	\$ 1,360	\$ -	\$ 1,360	\$ -	\$ 1,360
<b>Contract Labor Total</b>						\$ 22,040	\$ -	\$ 22,040	\$ 9,670	\$ 12,370
Hornsby Bend Utility Company	Water	6	Purchased Water	550505	Purchased Water	\$ 1,059,634	\$ 15,520	\$ 1,075,154	\$ 1,075,154	\$ -
<b>Purchased Water Total</b>						\$ 1,059,634	\$ 15,520	\$ 1,075,154	\$ 1,075,154	\$ -
Hornsby Bend Utility Company	Water	7	Chemicals for Treatment	550010	Chemicals	\$ 3,184	\$ -	\$ 3,184	\$ 3,184	\$ -
Hornsby Bend Utility Company	Sewer	7	Chemicals for Treatment	550010	Chemicals	\$ 33,414	\$ -	\$ 33,414	\$ -	\$ 33,414
<b>Chemicals for Treatment Total</b>						\$ 36,598	\$ -	\$ 36,598	\$ 3,184	\$ 33,414
Hornsby Bend Utility Company	Water	8	Utilities (electricity)	550405	Purchased Electric	\$ 27,355	\$ -	\$ 27,355	\$ 27,355	\$ -
Hornsby Bend Utility Company	Sewer	8	Utilities (electricity)	550405	Purchased Electric	\$ 69,979	\$ -	\$ 69,979	\$ -	\$ 69,979
Hornsby Bend Utility Company	Common	8	Utilities (electricity)	650120	Utilities Expense	\$ 6,877	\$ -	\$ 6,877	\$ 3,499	\$ 3,378
<b>Utilities (electricity)</b>						\$ 104,211	\$ -	\$ 104,211	\$ 30,854	\$ 73,358
Hornsby Bend Utility Company	Water	9	Repairs / Maintenance / Supplies	550120	Laboratory Services	\$ 2,575	\$ -	\$ 2,575	\$ 2,575	\$ -
Hornsby Bend Utility Company	Water	9	Repairs / Maintenance / Supplies	570035	Supplies - Field	\$ 2,713	\$ -	\$ 2,713	\$ 2,713	\$ -
Hornsby Bend Utility Company	Water	9	Repairs / Maintenance / Supplies	657010	Repair & Maint Other	\$ 92	\$ -	\$ 92	\$ 92	\$ -
Hornsby Bend Utility Company	Water	9	Repairs / Maintenance / Supplies	690560	Alloc Repair & Maint	\$ 1,586	\$ -	\$ 1,586	\$ 1,586	\$ -
Hornsby Bend Utility Company	Water	9	Repairs / Maintenance / Supplies	690590	Alloc Mats & Supply	\$ 6,431	\$ -	\$ 6,431	\$ 6,431	\$ -
Hornsby Bend Utility Company	Sewer	9	Repairs / Maintenance / Supplies	550120	Laboratory Services	\$ 14,025	\$ -	\$ 14,025	\$ -	\$ 14,025
Hornsby Bend Utility Company	Sewer	9	Repairs / Maintenance / Supplies	570035	Supplies - Field	\$ 11,109	\$ -	\$ 11,109	\$ -	\$ 11,109
Hornsby Bend Utility Company	Sewer	9	Repairs / Maintenance / Supplies	657010	Repair & Maint Other	\$ 1,326	\$ -	\$ 1,326	\$ -	\$ 1,326
Hornsby Bend Utility Company	Sewer	9	Repairs / Maintenance / Supplies	657030	Repair & Maint Fac	\$ 232	\$ -	\$ 232	\$ -	\$ 232
Hornsby Bend Utility Company	Sewer	9	Repairs / Maintenance / Supplies	690560	Alloc Repair & Maint	\$ 2,489	\$ -	\$ 2,489	\$ -	\$ 2,489
Hornsby Bend Utility Company	Sewer	9	Repairs / Maintenance / Supplies	690590	Alloc Mats & Supply	\$ 13,656	\$ -	\$ 13,656	\$ -	\$ 13,656
Hornsby Bend Utility Company	Common	9	Repairs / Maintenance / Supplies	570035	Supplies - Field	\$ 7,640	\$ -	\$ 7,640	\$ 3,887	\$ 3,753
Hornsby Bend Utility Company	Common	9	Repairs / Maintenance / Supplies	657020	Repair & Maint Auto	\$ 3,976	\$ -	\$ 3,976	\$ 2,023	\$ 1,953
Hornsby Bend Utility Company	Common	9	Repairs / Maintenance / Supplies	657030	Repair & Maint Fac	\$ 1,299	\$ -	\$ 1,299	\$ 661	\$ 638

Application for a Rate/Tariff Change - SWWC Utilities, Inc.

Appendix 10 - Revenue Requirement Calculations

Connections	Water	Sewer
% of Total	2,003	1,934
	50.88%	49.12%

Table Appendix 10.II.A - Hornsby Bend Utility Company Revenue Requirement Detail

Company	Category	Report Line	TCEQ Account Title	G/L Account	Account Description	Amount Per Books	Normalizing Adjustments	Per Books As Adjusted	Water Total	Sewer Total
Hornsby Bend Utility Company	Common	9	Repairs / Maintenance / Supplies	690590	Alloc Mats & Supply	\$ (6,669)	\$ -	\$ (6,669)	\$ (3,393)	\$ (3,276)
Hornsby Bend Utility Company	Water	9	Repairs / Maintenance / Supplies	540510	Service Fee Cost	\$ 5,191	\$ -	\$ 5,191	\$ 5,191	\$ -
Hornsby Bend Utility Company	Sewer	9	Repairs / Maintenance / Supplies	540510	Service Fee Cost	\$ 33,125	\$ -	\$ 33,125	\$ -	\$ 33,125
Hornsby Bend Utility Company	Common	9	Repairs / Maintenance / Supplies	540510	Service Fee Cost	\$ 15,376	\$ -	\$ 15,376	\$ 7,823	\$ 7,553
Hornsby Bend Utility Company	Water	9	Repairs / Maintenance / Supplies	690610	Alloc Prod & Treat	\$ 2,928	\$ -	\$ 2,928	\$ 2,928	\$ -
Hornsby Bend Utility Company	Sewer	9	Repairs / Maintenance / Supplies	550205	Hauling & Disposal	\$ 43,244	\$ -	\$ 43,244	\$ -	\$ 43,244
Hornsby Bend Utility Company	Sewer	9	Repairs / Maintenance / Supplies	690610	Alloc Prod & Treat	\$ 17,304	\$ -	\$ 17,304	\$ -	\$ 17,304
Hornsby Bend Utility Company	Common	9	Repairs / Maintenance / Supplies	690610	Alloc Prod & Treat	\$ (3,573)	\$ -	\$ (3,573)	\$ (1,818)	\$ (1,755)
Hornsby Bend Utility Company	Water	9	Repairs / Maintenance / Supplies	550205	Hauling & Disposal	\$ 4,091	\$ -	\$ 4,091	\$ 4,091	\$ -
Hornsby Bend Utility Company	Water	9	Repairs / Maintenance / Supplies	570030	Tapping Expense	\$ 397	\$ -	\$ 397	\$ 397	\$ -
<b>Repairs/Maintenance/Supplies Total</b>						\$ 180,563	\$ -	\$ 180,563	\$ 35,186	\$ 145,377
Hornsby Bend Utility Company	Common	10	Office Expenses	650000	Postage & Delivery	\$ 15	\$ -	\$ 15	\$ 8	\$ 7
<b>Office Expenses Total</b>						\$ 15	\$ -	\$ 15	\$ 8	\$ 7
Hornsby Bend Utility Company	Water	11	Professional Fees	658010	Professional Fee Con	\$ 600	\$ -	\$ 600	\$ 600	\$ -
Hornsby Bend Utility Company	Sewer	11	Professional Fees	658010	Professional Fee Con	\$ 670	\$ -	\$ 670	\$ -	\$ 670
Hornsby Bend Utility Company	Common	11	Professional Fees	658040	Prof Fees - Legal	\$ 138,323	\$ (138,323)	\$ -	\$ -	\$ -
<b>Professional Fees Total</b>						\$ 139,593	\$ (138,323)	\$ 1,270	\$ 600	\$ 670
Hornsby Bend Utility Company	Common	12	Insurance	655040	Ins Exp-Fees	\$ 130	\$ -	\$ 130	\$ 66	\$ 64
Hornsby Bend Utility Company	Common	12	Insurance	655090	Ins Exp-Vehicle	\$ 1,132	\$ -	\$ 1,132	\$ 576	\$ 556
<b>Insurance Total</b>						\$ 1,263	\$ -	\$ 1,263	\$ 642	\$ 620
Hornsby Bend Utility Company	Water	14	Miscellaneous	656035	Telecom - Voice Line	\$ 9,722	\$ -	\$ 9,722	\$ 9,722	\$ -
Hornsby Bend Utility Company	Water	14	Miscellaneous	656050	Network Data Circuit	\$ 557	\$ -	\$ 557	\$ 557	\$ -
Hornsby Bend Utility Company	Water	14	Miscellaneous	661030	Capitalized Overhead	\$ (1,851)	\$ -	\$ (1,851)	\$ (1,851)	\$ -
Hornsby Bend Utility Company	Water	14	Miscellaneous	670010	Loss/Gain - Operatin	\$ 5,536	\$ (5,536)	\$ -	\$ -	\$ -
Hornsby Bend Utility Company	Water	14	Miscellaneous	690010	Activity Alloc-OCOST	\$ 1,667	\$ -	\$ 1,667	\$ 1,667	\$ -

Application for a Rate/Tariff Change - SWWC Utilities, Inc.

Appendix 10 - Revenue Requirement Calculations

Connections	Water	Sewer
% of Total	2,003	1,934
	50.88%	49.12%

Table Appendix 10.II.A - Hornsby Bend Utility Company Revenue Requirement Detail

Company	Category	Report Line	TCEQ Account Title	G/L Account	Account Description	Amount Per Books	Normalizing Adjustments	Per Books As Adjusted	Water Total	Sewer Total
Hornsby Bend Utility Company	Water	14	Miscellaneous	700650	Rental Income	\$ (100)	\$ -	\$ (100)	\$ (100)	\$ -
Hornsby Bend Utility Company	Water	14	Miscellaneous	690680	Alloc Admin & Pass	\$ 553	\$ -	\$ 553	\$ 553	\$ -
Hornsby Bend Utility Company	Sewer	14	Miscellaneous	558055	Prof Fees -Other	\$ (10,506)	\$ 10,506	\$ -	\$ -	\$ -
Hornsby Bend Utility Company	Sewer	14	Miscellaneous	661030	Capitalized Overhead	\$ (348)	\$ -	\$ (348)	\$ -	\$ (348)
Hornsby Bend Utility Company	Sewer	14	Miscellaneous	670010	Loss/Gain - Operatin	\$ 16,204	\$ (16,204)	\$ -	\$ -	\$ -
Hornsby Bend Utility Company	Sewer	14	Miscellaneous	690010	Activity Alloc-OCOST	\$ 771	\$ -	\$ 771	\$ -	\$ 771
Hornsby Bend Utility Company	Sewer	14	Miscellaneous	690680	Alloc Admin & Pass	\$ 3,385	\$ -	\$ 3,385	\$ -	\$ 3,385
Hornsby Bend Utility Company	Common	14	Miscellaneous	610040	Meals & Entertain 50	\$ 90	\$ -	\$ 90	\$ 46	\$ 44
Hornsby Bend Utility Company	Common	14	Miscellaneous	613030	Pre-employment Med	\$ 78	\$ -	\$ 78	\$ 39	\$ 38
Hornsby Bend Utility Company	Common	14	Miscellaneous	613060	Training & Seminars	\$ 111	\$ -	\$ 111	\$ 56	\$ 55
Hornsby Bend Utility Company	Common	14	Miscellaneous	613070	Uniforms & Clothing	\$ 1,312	\$ -	\$ 1,312	\$ 667	\$ 644
Hornsby Bend Utility Company	Common	14	Miscellaneous	613100	Workers Compensation	\$ 519	\$ -	\$ 519	\$ 264	\$ 255
Hornsby Bend Utility Company	Common	14	Miscellaneous	613110	Workers Comp-Claims	\$ (107)	\$ -	\$ (107)	\$ (54)	\$ (52)
Hornsby Bend Utility Company	Common	14	Miscellaneous	631010	Vehicle Expense	\$ 927	\$ -	\$ 927	\$ 472	\$ 455
Hornsby Bend Utility Company	Common	14	Miscellaneous	631020	Vehicle Fuel	\$ 23,862	\$ -	\$ 23,862	\$ 12,140	\$ 11,722
Hornsby Bend Utility Company	Common	14	Miscellaneous	550020	Mktg & Cust Relation	\$ 65	\$ -	\$ 65	\$ 33	\$ 32
Hornsby Bend Utility Company	Common	14	Miscellaneous	650180	Lease Exp-Vehicle	\$ 4,107	\$ -	\$ 4,107	\$ 2,089	\$ 2,017
Hornsby Bend Utility Company	Common	14	Miscellaneous	650185	Lease Exp-Other	\$ (131)	\$ -	\$ (131)	\$ (66)	\$ (64)
Hornsby Bend Utility Company	Common	14	Miscellaneous	656025	Mobile Device Exp	\$ 5,023	\$ -	\$ 5,023	\$ 2,556	\$ 2,488
Hornsby Bend Utility Company	Common	14	Miscellaneous	656035	Telecom - Voice Line	\$ 3,404	\$ -	\$ 3,404	\$ 1,732	\$ 1,672
Hornsby Bend Utility Company	Common	14	Miscellaneous	670005	Bank Charges	\$ 12,348	\$ -	\$ 12,348	\$ 6,282	\$ 6,066
Hornsby Bend Utility Company	Common	14	Miscellaneous	670010	Loss/Gain - Operatin	\$ (12,609)	\$ 12,609	\$ -	\$ -	\$ -
Hornsby Bend Utility Company	Common	14	Miscellaneous	690010	Activity Alloc-OCOST	\$ (4,568)	\$ -	\$ (4,568)	\$ (2,324)	\$ (2,244)
Hornsby Bend Utility Company	Common	14	Miscellaneous	690680	Alloc Admin & Pass	\$ (1,210)	\$ -	\$ (1,210)	\$ (616)	\$ (594)
<b>Miscellaneous Total</b>						\$ 58,810	\$ 1,375	\$ 60,185	\$ 33,864	\$ 26,322
Hornsby Bend Utility Company	Water	14.5	Depreciation and Amortization	640010	Depr Exp - Buildings	\$ 22,770	\$ -	\$ 22,770	\$ 22,770	\$ -

Application for a Rate/Tariff Change - SWWC Utilities, Inc.

Appendix 10 - Revenue Requirement Calculations

Connections	Water	Sewer
% of Total	2,003	1,934
	50.88%	49.12%

Table Appendix 10.II.A - Hornsby Bend Utility Company Revenue Requirement Detail

Company	Category	Report Line	TCEQ Account Title	G/L Account	Account Description	Amount Per Books	Normalizing Adjustments	Per Books As Adjusted	Water Total	Sewer Total
Hornsby Bend Utility Company	Water	14.5	Depreciation and Amortization	640020	Depreciation Expense	\$ 282,024	\$ -	\$ 282,024	\$ 282,024	\$ -
Hornsby Bend Utility Company	Water	14.5	Depreciation and Amortization	640060	Depreciation Expense	\$ 796	\$ -	\$ 796	\$ 796	\$ -
Hornsby Bend Utility Company	Water	14.5	Depreciation and Amortization	640440	Amortization	\$ 145,201	\$ -	\$ 145,201	\$ 145,201	\$ -
Hornsby Bend Utility Company	Water	14.5	Depreciation and Amortization	650160	Accretion - Asset Re	\$ 2,584	\$ (2,584)	\$ -	\$ -	\$ -
Hornsby Bend Utility Company	Sewer	14.5	Depreciation and Amortization	640010	Depr Exp - Buildings	\$ 236	\$ -	\$ 236	\$ -	\$ 236
Hornsby Bend Utility Company	Sewer	14.5	Depreciation and Amortization	640020	Depreciation Expense	\$ 276,987	\$ -	\$ 276,987	\$ -	\$ 276,987
<b>Depreciation and Amortization Total</b>						<b>\$ 730,597</b>	<b>\$ (2,584)</b>	<b>\$ 728,013</b>	<b>\$ 450,791</b>	<b>\$ 277,222</b>
Hornsby Bend Utility Company	Water	16	Property and Other Taxes	750110	Reg Fees/Tax Exp	\$ 3,412	\$ -	\$ 3,412	\$ 3,412	\$ -
Hornsby Bend Utility Company	Sewer	16	Property and Other Taxes	750110	Reg Fees/Tax Exp	\$ 1,947	\$ -	\$ 1,947	\$ -	\$ 1,947
Hornsby Bend Utility Company	Common	16	Property and Other Taxes	612000	Social Security Exp	\$ 7,731	\$ -	\$ 7,731	\$ 3,933	\$ 3,798
Hornsby Bend Utility Company	Common	16	Property and Other Taxes	750110	Reg Fees/Tax Exp	\$ 1,304	\$ -	\$ 1,304	\$ 664	\$ 641
<b>Property and Other Taxes Total</b>						<b>14,394.84</b>	<b>\$ -</b>	<b>14394.84</b>	<b>\$ 8,009</b>	<b>\$ 6,386</b>

Application for a Rate/Tariff Change - SWWC Utilities, Inc.

Appendix 10 - Revenue Requirement Calculations

Connections	Water	Sewer
% of Total	1,917	0
	100.00%	0.00%

Table Appendix 10.II.B - Water Services Inc. Revenue Requirement Detail

Company	Category	Report Line	TCEQ Account Title	G/L Account	Account Description	Amount Per Books	Normalizing Adjustments	Per Books As Adjusted	Water Total	Sewer Total
Water Services, Inc.	Water	1	Utility Service / Sales	410000	Base Fee Revenue	\$ 988	\$ -	\$ 988	\$ 988	\$ -
Water Services, Inc.	Water	1	Utility Service / Sales	410005	Consumption-Based Revenue	\$ (395,036)	\$ -	\$ (395,036)	\$ (395,036)	\$ -
Water Services, Inc.	Water	1	Utility Service / Sales	420040	Water Service	\$ (987,187)	\$ -	\$ (987,187)	\$ (987,187)	\$ -
Water Services, Inc.	Water	1	Utility Service / Sales	430000	Unbilled Revenues	\$ (13,110)	\$ 13,110	\$ -	\$ -	\$ -
<b>Utility Service / Sales Total</b>						\$ (1,394,345)	\$ 13,110	\$ (1,381,235)	\$ (1,381,235)	\$ -
Water Services, Inc.	Water	3	Other Revenues	420020	Tap Fees	\$ (7,320)	\$ -	\$ (7,320)	\$ (7,320)	\$ -
Water Services, Inc.	Water	3	Other Revenues	450030	Penalties and Fees	\$ (15,683)	\$ -	\$ (15,683)	\$ (15,683)	\$ -
<b>Other Revenues Total</b>						\$ (23,003)	\$ -	\$ (23,003)	\$ (23,003)	\$ -
Water Services, Inc.	Water	4	Salaries and Wages	Various	Salaries and Wages	\$ 107,813	\$ 61,730	\$ 169,543	\$ 169,543	\$ -
<b>Salaries and Wages Total</b>						\$ 107,813	\$ 61,730	\$ 169,543	\$ 169,543	\$ -
Water Services, Inc.	Water	5	Contract Labor	540105	Contract Svcs Exp	\$ 27,922	\$ -	\$ 27,922	\$ 27,922	\$ -
<b>Contract Labor Total</b>						\$ 27,922	\$ -	\$ 27,922	\$ 27,922	\$ -
Water Services, Inc.	Water	6	Purchased Water	550505	Purchased Water	\$ 87,624	\$ -	\$ 87,624	\$ 87,624	\$ -
<b>Purchased Water Total</b>						\$ 87,624	\$ -	\$ 87,624	\$ 87,624	\$ -
Water Services, Inc.	Water	7	Chemicals for Treatment	550010	Chemicals	\$ 13,619	\$ -	\$ 13,619	\$ 13,619	\$ -
<b>Chemicals Total</b>						\$ 13,619	\$ -	\$ 13,619	\$ 13,619	\$ -
Water Services, Inc.	Water	8	Utilities (electricity)	550405	Purchased Electricity	\$ 104,046	\$ -	\$ 104,046	\$ 104,046	\$ -
<b>Utilities (electricity)</b>						\$ 104,046	\$ -	\$ 104,046	\$ 104,046	\$ -
Water Services, Inc.	Water	9	Repairs / Maintenance / Supplies	550120	Laboratory Services	\$ 14,241	\$ -	\$ 14,241	\$ 14,241	\$ -
Water Services, Inc.	Water	9	Repairs / Maintenance / Supplies	570035	Supplies - Field	\$ 54,704	\$ -	\$ 54,704	\$ 54,704	\$ -
Water Services, Inc.	Water	9	Repairs / Maintenance / Supplies	657010	Repair & Maint Other	\$ 4,335	\$ -	\$ 4,335	\$ 4,335	\$ -
Water Services, Inc.	Water	9	Repairs / Maintenance / Supplies	690560	Alloc Repair & Maint	\$ 4,732	\$ -	\$ 4,732	\$ 4,732	\$ -
Water Services, Inc.	Water	9	Repairs / Maintenance / Supplies	570030	Tapping Expense	\$ 2,608	\$ -	\$ 2,608	\$ 2,608	\$ -
Water Services, Inc.	Water	9	Repairs / Maintenance / Supplies	540510	Service Fee Cost	\$ 44,342	\$ -	\$ 44,342	\$ 44,342	\$ -

Application for a Rate/Tariff Change - SWWC Utilities, Inc.

Appendix 10 - Revenue Requirement Calculations

Connections	Water	Sewer
% of Total	1,917	0
	100.00%	0.00%

Table Appendix 10.II.B - Water Services Inc. Revenue Requirement Detail

Company	Category	Report Line	TCEQ Account Title	G/L Account	Account Description	Amount Per Books	Normalizing Adjustments	Per Books As Adjusted	Water Total	Sewer Total
Water Services, Inc.	Water	9	Repairs / Maintenance / Supplies	690590	Alloc Mats & Supply	\$ 32,274	\$ -	\$ 32,274	\$ 32,274	\$ -
<b>Repairs/Maintenance/Supplies Total</b>										
Water Services, Inc.	Water	10	Office Expenses	650140	Printing & Comm	\$ (150)	\$ -	\$ (150)	\$ (150)	\$ -
Water Services, Inc.	Water	10	Office Expenses	650170	Lease Exp - Office	\$ 1,295	\$ -	\$ 1,295	\$ 1,295	\$ -
<b>Office Expenses Total</b>										
Water Services, Inc.	Water	12	Insurance	655060	Ins Exp-Other	\$ 500	\$ -	\$ 500	\$ 500	\$ -
<b>Insurance Total</b>										
Water Services, Inc.	Water	14	Miscellaneous	570010	Cost of Removal	\$ 299	\$ (299)	\$ -	\$ -	\$ -
Water Services, Inc.	Water	14	Miscellaneous	690680	Alloc Admin & Pass	\$ 17,694	\$ -	\$ 17,694	\$ 17,694	\$ -
Water Services, Inc.	Water	14	Miscellaneous	610040	Meals & Entertain 50	\$ 12	\$ -	\$ 12	\$ 12	\$ -
Water Services, Inc.	Water	14	Miscellaneous	610090	Travel - Other	\$ 2	\$ -	\$ 2	\$ 2	\$ -
Water Services, Inc.	Water	14	Miscellaneous	613020	Health & Safety	\$ (463)	\$ -	\$ (463)	\$ (463)	\$ -
Water Services, Inc.	Water	14	Miscellaneous	631010	Vehicle Expense	\$ 1,122	\$ -	\$ 1,122	\$ 1,122	\$ -
Water Services, Inc.	Water	14	Miscellaneous	650020	Mktg & Cust Relation	\$ 2,284	\$ -	\$ 2,284	\$ 2,284	\$ -
Water Services, Inc.	Water	14	Miscellaneous	650040	Dues & Subscriptions	\$ 448	\$ -	\$ 448	\$ 448	\$ -
Water Services, Inc.	Water	14	Miscellaneous	650175	Lease Exp-Equipment	\$ 1,315	\$ -	\$ 1,315	\$ 1,315	\$ -
Water Services, Inc.	Water	14	Miscellaneous	656035	Telecom - Voice Line	\$ 2,978	\$ -	\$ 2,978	\$ 2,978	\$ -
Water Services, Inc.	Water	14	Miscellaneous	656050	Network Data Circuit	\$ 2,964	\$ -	\$ 2,964	\$ 2,964	\$ -
Water Services, Inc.	Water	14	Miscellaneous	658055	Prof Fees -Other	\$ (0)	\$ -	\$ (0)	\$ (0)	\$ -
Water Services, Inc.	Water	14	Miscellaneous	661030	Capitalized Overhead	\$ (1,222)	\$ -	\$ (1,222)	\$ (1,222)	\$ -
Water Services, Inc.	Water	14	Miscellaneous	670005	Bank Charges	\$ 748	\$ -	\$ 748	\$ 748	\$ -
Water Services, Inc.	Water	14	Miscellaneous	670010	Loss/Gain - Operatin	\$ 30,799	\$ (30,799)	\$ -	\$ -	\$ -
Water Services, Inc.	Water	14	Miscellaneous	700500	Dividend Income	\$ (3,355)	\$ 3,355	\$ -	\$ -	\$ -
<b>Miscellaneous Total</b>										
						\$ 55,625	\$ (27,743)	\$ 27,881	\$ 27,881	\$ -

Application for a Rate/Tariff Change - SWWC Utilities, Inc.

Appendix 10 - Revenue Requirement Calculations

Connections	Water	Sewer
% of Total	1,917	0
	100.00%	0.00%

Table Appendix 10.II.B - Water Services Inc. Revenue Requirement Detail

Company	Category	Report Line	TCEQ Account Title	G/L Account	Account Description	Amount Per Books	Normalizing Adjustments	Per Books As Adjusted	Water Total	Sewer Total
Water Services, Inc.	Water	14.5	Depreciation and Amortization	640010	Depr Exp - Buildings	\$ 21,488	\$ -	\$ 21,488	\$ 21,488	\$ -
Water Services, Inc.	Water	14.5	Depreciation and Amortization	640020	Depreciation Expense	\$ 212,451	\$ -	\$ 212,451	\$ 212,451	\$ -
Water Services, Inc.	Water	14.5	Depreciation and Amortization	640040	Depreciation Expense	\$ 15,621	\$ -	\$ 15,621	\$ 15,621	\$ -
Water Services, Inc.	Water	14.5	Depreciation and Amortization	650160	Accretion - Asset Re	\$ 7,185	\$ (7,185)	\$ -	\$ -	\$ -
<b>Depreciation and Amortization Total</b>						<b>\$ 256,746</b>	<b>\$ (7,185)</b>	<b>\$ 249,560</b>	<b>\$ 249,560</b>	<b>\$ -</b>
Water Services, Inc.	Water	16	Property and Other Taxes	750070	Gross Receipts Tax E	\$ 3,707	\$ -	\$ 3,707	\$ 3,707	\$ -
Water Services, Inc.	Water	16	Property and Other Taxes	750110	Reg Fees/Tax Exp	\$ 3,546	\$ -	\$ 3,546	\$ 3,546	\$ -
<b>Property and Other Taxes Total</b>						<b>\$ 3,546</b>	<b>\$ -</b>	<b>\$ 3,546</b>	<b>\$ 3,546</b>	<b>\$ -</b>



**Application for a Rate/Tariff Change - SWWC Utilities, Inc.**

**Appendix 10 - Revenue Requirement Calculations**

**Table Appendix 10.III.A - Property Taxes**

<b>Company</b>	<b>2012 Property Taxes</b>	<b>2013 Estimated Property Taxes</b>
Water Services, Inc.	\$ 51,074	\$ 43,654
Hornsby Bend Utilities Water	\$ 52,719	\$ 52,773
Hornsby Bend Utilities Wastewater	\$ 50,774	\$ 55,623

Application for a Rate/Tariff Change - SWWC Utilities, Inc.

Appendix 10 - Revenue Requirement Calculations

Table Appendix 10.IV.A - Bad Debt Summary

Company	Test Year Bad Debt	K&M Changes	Test Year as Adjusted
Water Services, Inc.	\$ -	\$ 7,924	\$ 7,924
Hornsby Bend Utilities Water (See Table Appendix 10.IV.B)	\$ -	\$ 7,782	\$ 7,782
Hornsby Bend Utilities Wastewater (See Table Appendix 10.IV.B)	\$ -	\$ 7,514	\$ 7,514
<b>Total SWWC</b>	\$ -	\$ 23,221	\$ 23,221

Table Appendix 10.IV.B - Hornsby Bend Bad Debt Allocation

	Allocation Factor	Test Year Bad Debt per Books	K&M Adjustment	Test Year as Adjusted
Bad Debt Total		\$ -	\$ 15,297	\$ 15,297
Common		\$ -		
Common Bad Debt Allocation Water	50.88%	\$ -		
Common Bad Debt Allocation Sewer	49.12%	\$ -		
Water Bad Debt Directly Allocated		\$ -		
Water Bad Debt Total		\$ -		
Water Bad Debt % of Total	50.88%			
Water Bad Debt Total as Adjusted				\$ 7,782
Sewer Bad Debt Directly Allocated		\$ -		
Sewer Bad Debt Total		\$ -		
Sewer Bad Debt % of Total	49.12%			
Sewer Bad Debt Total as Adjusted				\$ 7,514
<b>Bad Debt Total (Water + Sewer)</b>	<b>100.00%</b>	<b>\$ -</b>	<b>\$ 15,297</b>	<b>\$ 15,297</b>

**Application for a Rate/Tariff Change - SWWC Utilities, Inc.**

Appendix 10 - Revenue Requirement Calculations

**Appendix 10.V.A - Franchise Tax Calculation - Hornsby Bend**

		Water	Wastewater
Total Revenue	[A]	\$ 5,522,065	\$ 2,240,966
Costs of goods sold	[B]	\$ 2,335,636	\$ 1,117,339
Cost of goods sold margin (([A] - [B]))	[C]	\$ 3,186,429	\$ 1,123,627
Total Revenue	[D]	\$ 5,522,065	\$ 2,240,966
Wages and cash compensation	[E]	\$ 82,381	\$ 73,928
Employee Benefits (included above)	[F]	\$ -	\$ -
Compensation margin (([D] - [E] - [F]))	[G]	\$ 5,439,683	\$ 2,167,038
Total Revenue	[H]	\$ 5,522,065	\$ 2,240,966
% Margin (([H] * .7)	[I]	\$ 3,865,445	\$ 1,568,676
Margin (Enter least of [C], [G] or [I])	[J]	\$ 3,186,429	\$ 1,123,627
Tax Rate of 1% ([J] * .01)	[K]	\$ 31,864	\$ 11,236

**Appendix 10.V.B - Franchise Tax Calculation - Water Services**

		Water	Wastewater
Total Revenue	[A]	\$ 2,140,255	
Costs of goods sold	[B]	\$ 1,090,855	
Cost of goods sold margin (([A] - [B]))	[C]	\$ 1,049,399	
Total Revenue	[D]	\$ 2,140,255	
Wages and cash compensation	[E]	\$ 169,543	
Employee Benefits (included above)	[F]	\$ -	
Compensation margin (([D] - [E] - [F]))	[G]	\$ 1,970,712	
Total Revenue	[H]	\$ 2,140,255	
% Margin (([H] * .7)	[I]	\$ 1,498,178	
Margin (Enter least of [C], [G] or [I])	[J]	\$ 1,049,399	
Tax Rate of 1% ([J] * .01)	[K]	\$ 10,494	

**Application for a Rate/Tariff Change - SWWC Utilities, Inc.**

**Appendix 10 - Revenue Requirement Calculations**

**Table Appendix 10.VI.A. - Summary of Rate Case Expenses**

	Monarch Utilities I, LP		Hornsby Bend Utilities		Water Services
	Water	Sewer	Water	Sewer	
Customer Bill Count:	272,831	52,608	22,876	22,975	23,003
<b>Legal:</b>					
Lloyd Gosselink Rochelle & Townsend, P.C.	\$ 30,000	\$ 2,425	\$ 4,984	\$ 5,005	\$ 5,011
Law Offices of Mark Zeppa	\$ 5,000	\$ 404.13	\$ 831	\$ 834	\$ 835
<b>Consulting:</b>					
GDS Associates, Inc.	\$ 80,000	\$ 6,466	\$ 13,290	\$ 13,347	\$ 13,363
Fincap	\$ 8,500	\$ 647	\$ 1,495	\$ 1,502	\$ 1,503
<b>Other:</b>					
Customer notice - printing and assem.	\$ 26,367	\$ 2,131	\$ 4,380	\$ 4,399	\$ 4,404
Mailing - customer notice - 3rd class bulk	\$ 8,250	\$ 667	\$ 1,370	\$ 1,376	\$ 1,378
Mailing - hearing and final rate notice	\$ 21,780	\$ 1,760	\$ 3,618	\$ 3,634	\$ 3,638
Misc.	\$ 10,000	\$ 808	\$ 1,661	\$ 1,668	\$ 1,670
<b>Total Rate Case Expenses to Date of Filing Only</b>	<b>\$ 189,897</b>	<b>\$ 15,308</b>	<b>\$ 31,629</b>	<b>\$ 31,766</b>	<b>\$ 31,804</b>
	<b>\$ 79,390</b>	<b>\$ 15,308</b>	<b>\$ 31,629</b>	<b>\$ 31,766</b>	<b>\$ 31,804</b>

Application for a Rate/Tariff Change - SWWC Utilities, Inc.

Appendix 10 - Revenue Requirement Calculations

Table Appendix 10.VII.A - Payroll Tax Calculation

Company	Test Year Amount	K&M Changes	As Adjusted
<b>Hornsby Bend Utility Company - Water</b>			
Total Salaries and Wages	\$ 73,787	\$ 8,594	\$ 82,381
Payroll Only Portion	\$ 57,531	\$ 7,337	\$ 64,869
Effective Rate			8.59%
Payroll Taxes	\$ 3,933	\$ 1,639	\$ 5,572
<b>Water Services</b>			
Total Salaries and Wages	\$ 107,813	\$ 61,730	\$ 169,543
Payroll Only Portion	\$ 107,266	\$ 26,381	\$ 133,647
Effective Rate			8.59%
Payroll Taxes	\$ -	\$ 11,480	\$ 11,480
<b>Hornsby Bend Utility Company - Sewer</b>			
Total Salaries and Wages	\$ 65,736	\$ 8,192	\$ 73,928
Payroll Only Portion	\$ 28,038	\$ 4,359	\$ 32,397
Effective Rate			8.59%
Payroll Taxes	\$ 3,798	\$ (1,015)	\$ 2,783

**Application for a Rate/Tariff Change - SWWC Utilities, Inc.**

**Appendix 10 - Revenue Requirement Calculations**

**Table Appendix 10.VIII.A. - Below the Line Accounts - Hornsby Bend Utilities**

Company	Category	G/L Account	Account Description	Amount Per Books
Hornsby Bend Utilities	Common	710010	Utility Group Manage	\$ 569,656
Hornsby Bend Utilities	Water	640450	Amortization of CIAC	\$ (123,532)
Hornsby Bend Utilities	Sewer	640450	Amortization of CIAC	\$ (129,660)
Hornsby Bend Utilities	Water	661025	Imputed Int Exp	\$ (76)
Hornsby Bend Utilities	Water	661035	Imput Int Exp Contra	\$ (50)
Hornsby Bend Utilities	Water	680010	I/C Interest	\$ 112,412
Hornsby Bend Utilities	Water	700100	Interest Expense	\$ 71
Hornsby Bend Utilities	Sewer	661025	Imputed Int Exp	\$ (2,181)
Hornsby Bend Utilities	Sewer	700100	Interest Expense	\$ (960)
Hornsby Bend Utilities	Sewer	700600	Interest Income	\$ 189
Hornsby Bend Utilities	Common	700100	Interest Expense	\$ 2
Hornsby Bend Utilities	Common	700110	Interest Exp - Capit	\$ 626

**Table Appendix 10.VIII.B. - Below the Line Accounts - Water Services, Inc.**

Company	Category	G/L Account	Account Description	Amount Per Books
Water Services, Inc.	Water	710010	Utility Group Manage	\$ 337,971
Water Services, Inc.	Water	640450	Amortization of CIAC	\$ (12,268)
Water Services, Inc.	Water	661025	Imputed Int Exp	\$ (2,376)
Water Services, Inc.	Water	661035	Imput Int Exp Contra	\$ (44)
Water Services, Inc.	Water	680010	I/C Interest	\$ 40,898
Water Services, Inc.	Water	700100	Interest Expense	\$ (6,494)

---

Application for a Rate/Tariff Change - SWWC Utilities, Inc.

---

Appendix 11 - Texas Utilities and Corporate Allocations

**Table Appendix 11.I.A - Test Year Corporate Allocations (Appendix 11.II.)**

Company	Test Year per Books	K&M	As Adjusted
Hornsby Bend Water	\$ 276,317	\$ (141,422)	\$ 134,894
Hornsby Bend Sewer	\$ 266,798	\$ (136,551)	\$ 130,247
Water Services Inc	\$ 351,037	\$ (200,865)	\$ 150,172

**Table Appendix 11.I.B - Test Year Texas Utilities Allocations (Appendix 11.III.)**

Company	Test Year per Books	K&M	As Adjusted
Hornsby Bend Water	\$ 289,820	\$ (50,499)	\$ 239,320
Hornsby Bend Sewer	\$ 279,836	\$ (48,760)	\$ 231,076
Water Services Inc	\$ 337,971	\$ (178,820)	\$ 159,151

Application for a Rate/Tariff Change - SWWC Utilities, Inc.

Appendix 11 - Texas Utilities and Corporate Allocations

Table Appendix 11.II.A - Corporate Allocated Amounts - 2 Factor

Company	Test Year per Books	Normalizing Adjustments	Known and Measurable Allocation	% Allocations - 2-Factor
Monarch Utilities	\$ 3,974,011	\$ (506,324)	\$ 3,467,688	73.68%
Windermere	\$ 1,240,774	\$ (751,981)	\$ 488,792	10.39%
Hornsby Bend Ops	\$ 543,114	\$ (277,973)	\$ 265,141	5.63%
Diamond	\$ 103,766	\$ 85,175	\$ 188,941	4.01%
Water Services Inc.	\$ 351,037	\$ (200,865)	\$ 150,172	3.19%
Huntington	\$ 15,454	\$ (10,797)	\$ 4,657	0.10%
Inverness	\$ 37,532	\$ (14,668)	\$ 22,864	0.49%
Mid-Tex	\$ -	\$ 259	\$ 259	0.01%
SW Utilities	\$ 2,208	\$ 862	\$ 3,070	0.07%
Tenkiller	\$ 75,065	\$ (18,599)	\$ 56,466	1.20%
Metro H2O	\$ 132,823	\$ (74,594)	\$ 58,229	1.24%
<b>Total Texas Utilities</b>	<b>\$ 6,475,785</b>	<b>\$ (1,769,507)</b>	<b>\$ 4,706,278</b>	<b>100.00%</b>

Table Appendix 11.II.B - Hornsby Bend Water/Sewer Corporate Allocation

% Allocated (Appendix 9.II.)	Test Year Per Books	Normalizing Adjustments	Known and Measurable Allocation
50.88%	\$ 276,317	\$ (141,422)	\$ 134,894
49.12%	\$ 266,798	\$ (136,551)	\$ 130,247
<b>100.00%</b>	<b>\$ 543,114</b>	<b>\$ (277,973)</b>	<b>\$ 265,141</b>



Application for a Rate/Tariff Change - SWWC Utilities, Inc.

Appendix 11 - Texas Utilities and Corporate Allocations

Table Appendix 11.III.A - Allocation of Texas Utilities Summary - 4-Factor

Company	Test Year per Books	K&M	As Adjusted	(Appendix 11.IV.)	% Allocations - 4-Factor
Monarch Utilities	\$ 4,476,740	\$ (996,927)	\$	3,479,813	64.31%
Widemere	\$ 1,359,799	\$ (390,356)	\$	969,443	17.92%
Hornsby Bend Ops	\$ 569,656	\$ (99,259)	\$	470,397	8.69%
Diamond	\$ 93,362	\$ 37,175	\$	130,537	2.41%
Water Services Inc	\$ 337,971	\$ (178,820)	\$	159,151	2.94%
Huntington	\$ 10,008	\$ 2,215	\$	12,223	0.23%
Inverness	\$ 35,003	\$ (7,065)	\$	27,938	0.52%
Mid-Tex	\$ -	\$ -	\$	-	0.00%
SW Utilities	\$ 2,843	\$ 372	\$	3,216	0.06%
Tenkiler	\$ 77,457	\$ (28,183)	\$	49,274	0.91%
Metro H2O	\$ 118,991	\$ (10,155)	\$	108,836	2.01%
<b>Texas Utilities Total</b>	<b>\$ 7,081,829</b>	<b>\$ (1,671,002)</b>	<b>\$</b>	<b>5,410,827</b>	<b>100.00%</b>

Table Appendix 11.III.B - Hornsby Bend Water/Sewer Texas Utilities Allocation

% Allocated	(Appendix 9.II.)	Test Year Total	K&M	As Adjusted
50.88%	\$	289,820	\$ (50,499)	\$ 239,320
49.12%	\$	279,836	\$ (48,760)	\$ 231,076
<b>100.00%</b>	<b>\$</b>	<b>569,656</b>	<b>\$ (99,259)</b>	<b>\$ 470,397</b>

Application for a Rate/Tariff Change - SWWC Utilities, Inc.

Appendix 11 - Texas Utilities and Corporate Allocations

Table Appendix 11.IV.A - Revenue Requirement Detail - Texas Utilities

Company	Category	Report Line	TCEQ Account Title	G/L Account	Account Description	Amount Per Books	Normalizing Adjustments	Per Books As Adjusted
Tx Util Admin & Corp	Common	4	Salaries and Wages (Appendix 10.V.)	Various	Salaries and Wages	\$ 3,771,642	\$ (241,526)	\$ 3,530,116
Tx Util Admin & Corp	Common	4	Salaries and Wages (Appendix 10.V)	Various	Payroll Taxes	\$ 224,843	\$ (14,350)	\$ 210,493
Tx Util Admin & Corp	Common	2	Fees (Tap, Reconnection, etc.)	450030	Penalties and Fees	\$ (120)	\$ 120	\$ -
Tx Util Admin & Corp	Common	3	Other Revenues	480000	Other Revenue	\$ 186,604	\$ (186,604)	\$ -
Tx Util Admin & Corp	Common	9	Repairs / Maintenance / Supplies	510040	Consump Plant-Stock	\$ (604)	\$ -	\$ (604)
Tx Util Admin & Corp	Common	9	Repairs / Maintenance / Supplies	520010	Gain/Loss Inventory	\$ 62,484	\$ -	\$ 62,484
Tx Util Admin & Corp	Common	5	Contract Labor	540105	Contract Svcs Exp	\$ 5,526	\$ -	\$ 5,526
Tx Util Admin & Corp	Common	5	Contract Labor	540510	Service Fee Cost	\$ 5,705	\$ -	\$ 5,705
Tx Util Admin & Corp	Common	8	Utilities (electricity)	550405	Purchased Electricit	\$ 174	\$ -	\$ 174
Tx Util Admin & Corp	Common	6	Purchased Water	550505	Purchased Water	\$ 4,362	\$ (4,362)	\$ -
Tx Util Admin & Corp	Common	9	Repairs / Maintenance / Supplies	570020	Inventory Adjustment	\$ (14,770)	\$ -	\$ (14,770)
Tx Util Admin & Corp	Common	9	Repairs / Maintenance / Supplies	570025	Materials & Supplies	\$ 9,182	\$ -	\$ 9,182
Tx Util Admin & Corp	Common	9	Repairs / Maintenance / Supplies	570035	Supplies - Field	\$ 17,647	\$ -	\$ 17,647
Tx Util Admin & Corp	Common	14	Miscellaneous	590010	Extended Expense Acr	\$ (292,754)	\$ 292,754	\$ -
Tx Util Admin & Corp	Common	14	Miscellaneous	610030	Travel - Lodging	\$ 59,886	\$ -	\$ 59,886
Tx Util Admin & Corp	Common	14	Miscellaneous	610040	Meals & Entertain 50	\$ 17,302	\$ -	\$ 17,302
Tx Util Admin & Corp	Common	14	Miscellaneous	610060	Meals - On Premise	\$ 58	\$ -	\$ 58
Tx Util Admin & Corp	Common	14	Miscellaneous	610070	Travel - Transportat	\$ 2,017	\$ -	\$ 2,017
Tx Util Admin & Corp	Common	14	Miscellaneous	610080	Mileage Reimbursemen	\$ 38,147	\$ -	\$ 38,147
Tx Util Admin & Corp	Common	14	Miscellaneous	610090	Travel - Other	\$ 1,419	\$ -	\$ 1,419
Tx Util Admin & Corp	Common	14	Miscellaneous	613010	Employee Cost -Other	\$ 81	\$ -	\$ 81
Tx Util Admin & Corp	Common	14	Miscellaneous	613020	Health & Safety	\$ 32	\$ -	\$ 32
Tx Util Admin & Corp	Common	14	Miscellaneous	613030	Pre-employment Med	\$ 1,616	\$ -	\$ 1,616
Tx Util Admin & Corp	Common	14	Miscellaneous	613060	Training & Seminars	\$ 7,356	\$ -	\$ 7,356
Tx Util Admin & Corp	Common	14	Miscellaneous	613070	Uniforms & Clothing	\$ 2,980	\$ -	\$ 2,980
Tx Util Admin & Corp	Common	14	Miscellaneous	613100	Workers Compensation	\$ 29,955	\$ -	\$ 29,955
Tx Util Admin & Corp	Common	14	Miscellaneous	613110	Workers Comp-Claims	\$ (10,359)	\$ 10,359	\$ -
Tx Util Admin & Corp	Common	14	Miscellaneous	613500	Temporary Labor	\$ 706,073	\$ (706,073)	\$ -
Tx Util Admin & Corp	Common	14	Miscellaneous	620000	Bad Debt Expenses	\$ 322,497	\$ (322,497)	\$ -

Application for a Rate/Tariff Change - SWWC Utilities, Inc.

Appendix 11 - Texas Utilities and Corporate Allocations

Table Appendix 11.IV.A - Revenue Requirement Detail - Texas Utilities

Company	Category	Report Line	TCEQ Account Title	G/L Account	Account Description	Amount Per Books	Normalizing Adjustments	Per Books As Adjusted
Tx Util Admin & Corp	Common	14	Miscellaneous	631010	Vehicle Expense	\$ 1,605		\$ 1,605
Tx Util Admin & Corp	Common	14	Miscellaneous	631020	Vehicle Fuel	\$ 4,130		\$ 4,130
Tx Util Admin & Corp	Common	10	Office Expenses	650000	Postage & Delivery	\$ 107,964		\$ 107,964
Tx Util Admin & Corp	Common	14	Miscellaneous	650020	Mktg & Cust Relation	\$ 50,473		\$ 50,473
Tx Util Admin & Corp	Common	14	Miscellaneous	650025	Contributions	\$ 107,580	\$ (5,000)	\$ 102,580
Tx Util Admin & Corp	Common	14	Miscellaneous	650040	Dues & Subscriptions	\$ 14,288		\$ 14,288
Tx Util Admin & Corp	Common	14	Miscellaneous	650060	Late Fees	\$ 5,670	\$ (5,670)	\$ -
Tx Util Admin & Corp	Common	14	Miscellaneous	650070	Licenses & Fees	\$ 13,770		\$ 13,770
Tx Util Admin & Corp	Common	14	Miscellaneous	650080	Fines & Pen-Non-Ded	\$ 52	\$ (52)	\$ -
Tx Util Admin & Corp	Common	10	Office Expenses	650135	Supplies - Office	\$ 8,237		\$ 8,237
Tx Util Admin & Corp	Common	10	Office Expenses	650140	Printing & Comm	\$ 277,398		\$ 277,398
Tx Util Admin & Corp	Common	14	Miscellaneous	650150	Project D - Retentio	\$ 265	\$ (265)	\$ -
Tx Util Admin & Corp	Common	14	Miscellaneous	650175	Lease Exp-Equipment	\$ 9,202		\$ 9,202
Tx Util Admin & Corp	Common	14	Miscellaneous	650180	Lease Exp-Vehicle	\$ 2,826		\$ 2,826
Tx Util Admin & Corp	Common	17	Regulatory Expenses	651000	Rate Case Expense	\$ 24,117	\$ (24,117)	\$ -
Tx Util Admin & Corp	Common	17	Regulatory Expenses	651005	Rate Case Exp -Legal	\$ 62,779	\$ (62,779)	\$ -
Tx Util Admin & Corp	Common	12	Insurance	655040	Ins Exp-Fees	\$ 44,739		\$ 44,739
Tx Util Admin & Corp	Common	12	Insurance	655050	Ins Exp-General Liab	\$ 68,417		\$ 68,417
Tx Util Admin & Corp	Common	12	Insurance	655070	Ins Exp-Property	\$ 183,375		\$ 183,375
Tx Util Admin & Corp	Common	12	Insurance	655080	Ins Exp-Umbrella	\$ 123,030		\$ 123,030
Tx Util Admin & Corp	Common	12	Insurance	655090	Ins Exp-Vehicle	\$ 589		\$ 589
Tx Util Admin & Corp	Common	14	Miscellaneous	656010	IT Costs	\$ 804		\$ 804
Tx Util Admin & Corp	Common	14	Miscellaneous	656020	Telecommunications	\$ 236		\$ 236
Tx Util Admin & Corp	Common	14	Miscellaneous	656025	Mobile Device Exp	\$ 13,422		\$ 13,422
Tx Util Admin & Corp	Common	9	Repairs / Maintenance / Supplies	656030	Telephone Systems Ma	\$ 463		\$ 463
Tx Util Admin & Corp	Common	14	Miscellaneous	656035	Telecom - Voice Line	\$ 42,968		\$ 42,968
Tx Util Admin & Corp	Common	14	Miscellaneous	656050	Network Data Circuit	\$ 30,327		\$ 30,327
Tx Util Admin & Corp	Common	14	Miscellaneous	656055	Conference Services	\$ 549		\$ 549
Tx Util Admin & Corp	Common	10	Office Expenses	656070	Hardware - Periphera	\$ 1,457		\$ 1,457

Appendix 11.IV.

Page 2 of 3

Application for a Rate/Tariff Change - SWWC Utilities, Inc.

Appendix 11 - Texas Utilities and Corporate Allocations

Table Appendix 11.IV.A - Revenue Requirement Detail - Texas Utilities

Company	Category	Report Line	TCEQ Account Title	G/L Account	Account Description	Amount Per Books	Normalizing Adjustments	Per Books AS Adjusted
Tx Util Admin & Corp	Common	9	Repairs / Maintenance / Supplies	657010	Repair & Maint Other	\$ 3,330		\$ 3,330
Tx Util Admin & Corp	Common	9	Repairs / Maintenance / Supplies	657020	Repair & Maint Auto	\$ 2,526		\$ 2,526
Tx Util Admin & Corp	Common	11	Professional Fees	658010	Professional Fee Con	\$ 9,051		\$ 9,051
Tx Util Admin & Corp	Common	14	Miscellaneous	658030	Prof Fees Collection	\$ 378		\$ 378
Tx Util Admin & Corp	Common	11	Professional Fees	658040	Prof Fees - Legal	\$ 17,609	\$ (17,609)	\$ -
Tx Util Admin & Corp	Common	14	Miscellaneous	658055	Prof Fees -Other	\$ 236,253	\$ (1,387)	\$ 234,866
Tx Util Admin & Corp	Common	18	Other	658060	Lobby Exp	\$ 85,384	\$ (85,384)	\$ -
Tx Util Admin & Corp	Common	14	Miscellaneous	661025	Imputed Int Exp	\$ 321	\$ (321)	\$ -
Tx Util Admin & Corp	Common	14	Miscellaneous	670000	Other Operating Exp	\$ (21,968)	\$ 21,968	\$ -
Tx Util Admin & Corp	Common	14	Miscellaneous	670005	Bank Charges	\$ 22,402		\$ 22,402
Tx Util Admin & Corp	Common	14	Miscellaneous	680010	I/C Interest	\$ 336,667	\$ (336,667)	\$ -
Tx Util Admin & Corp	Common	18	Other	690010	Activity Alloc-DCOST	\$ (12,327)	\$ 12,327	\$ -
Tx Util Admin & Corp	Common	14	Miscellaneous	690020	Activity Alloc-PRODT	\$ 83	\$ (83)	\$ -
Tx Util Admin & Corp	Common	14	Miscellaneous	690540	Allocated Other Emp	\$ 45,450		\$ 45,450
Tx Util Admin & Corp	Common	9	Repairs / Maintenance / Supplies	690590	Alloc Mats & Supply	\$ (5,742)		\$ (5,742)
Tx Util Admin & Corp	Common	5	Contract Labor	690680	Alloc Admin & Pass	\$ (75)	\$ 75	\$ -
Tx Util Admin & Corp	Common	18	Other	700100	Interest Expense	\$ (81)	\$ 81	\$ -
Tx Util Admin & Corp	Common	14	Miscellaneous	700110	Interest Exp - Capit	\$ 1,229	\$ (1,229)	\$ -
Tx Util Admin & Corp	Common	16	Property and Other Taxes	750090	Property Taxes	\$ 21	\$ (21)	\$ -
Tx Util Admin & Corp	Common	16	Property and Other Taxes	750110	Reg Fees/Tax Exp	\$ 308	\$ (308)	\$ -
Tx Util Admin & Corp	Common	13	Depreciation and Amortization	640040	Depreciation Expense	\$ 7,005		\$ 7,005
Tx Util Admin & Corp	Common	13	Depreciation and Amortization	640060	Depreciation Expense	\$ 1,913		\$ 1,913
Tx Util Admin & Corp	Common	14	Miscellaneous	n/a	Reconciliation Amount	\$ (7,619)	\$ 7,619	\$ -
<b>Texas Utilities Total</b>						<b>\$ 7,081,829</b>	<b>\$ (1,678,622)</b>	<b>\$ 5,410,827</b>

**Application for a Rate/Tariff Change - SWWC Utilities, Inc.**

**Appendix 12 - Summary of Water and Wastewater Sold**

**Table Appendix 12.I.A - Summary of Pumped and Sold - Water Services Dec 2011 - Nov 2012**

District	Gallons Produced	Gallons Purchased	Total Gallons Pumped	Gallons Billed	Gallons Flushed	Gallons Unaccounted	Test Year % Gain/Loss
Bavarian Hills	15,749,450	-	15,749,450	5,199,000	2,016,540	8,533,910	54.19%
Cascade	6,698,000	-	6,698,000	6,078,000	17,000	603,000	9.00%
Coolcrest	29,167,000	-	29,167,000	26,516,000	192,665	2,458,335	8.43%
Country Springs	39,837,100	-	39,837,100	28,942,000	813,016	10,082,084	25.31%
Garden Oaks	-	9,960,110	9,960,110	8,882,000	306,000	772,110	7.75%
Oaks North	30,732,200	-	30,732,200	26,137,000	583,300	4,011,900	13.05%
Oak Village North	66,610,000	-	66,610,000	61,159,000	1,586,000	3,865,000	5.80%
Stage Coach	17,884,000	-	17,884,000	15,034,000	397,515	2,452,485	13.71%
<b>Total Water Services</b>	<b>206,677,750</b>	<b>9,960,110</b>	<b>216,637,860</b>	<b>177,947,000</b>	<b>5,912,036</b>	<b>32,778,824</b>	

**Table Appendix 12.I.B - Summary of Pumped and Sold - Hornsby Bend Utility Company Water Jan 2012 - Dec 2012**

District	Gallons Produced	Gallons Purchased	Total Gallons Pumped	Gallons Billed	Gallons Flushed	Gallons Unaccounted	Test Year % Gain/Loss
Hornsby Bend Including Kennedy Ridge	1,145,000	159,536,000	160,681,000	131,684,000	7,217,810	21,779,190	13.55%
<b>Total Hornsby Bend Water</b>	<b>1,145,000</b>	<b>159,536,000</b>	<b>160,681,000</b>	<b>131,684,000</b>	<b>7,217,810</b>	<b>21,779,190</b>	

**Table Appendix 12.II.A - Summary of Wastewater Treated**

District	Facility	Daily Test Year Average Flow (MGD)	Total Annual Flow (MG)
Hornsby Bend	TPDES 13138-001	0.315	114.975

---

**Application for a Rate/Tariff Change - SWWC Utilities, Inc.**

---

Appendix 13 - M&S and Prepaids

**Table Appendix 13.I.A - M&S and Prepaids Summary**

<b>Company</b>	<b>Prepaids</b>	<b>M&amp;S</b>	<b>Total M&amp;S</b>
Water Services	\$ 12,091	\$ -	\$ 12,091
Hornsby Bend Water	\$ 3,939	\$ -	\$ 3,939
Hornsby Bend Sewer	\$ 2,209	\$ -	\$ 2,209
Total	\$ 18,239	\$ -	\$ 18,239

Application for a Rate/Tariff Change - SWWC Utilities, Inc.

Appendix 14 - Rate Comparisons and Annualized Test Year Revenue

Table Appendix 14.1.A - Company Current Annualized Revenues v. Company Noticed Annualized Revenues

Company	Current Revenue	Phase I Revenue	Phase II Revenue	% Increase over Current Revenue	Phase I Revenue	Phase II Revenue	% Increase over Current Revenue	% Increase over Phase I Revenue
Water Services	\$ 1,540,563	\$ 1,726,230	N/A	12.05%	N/A	N/A	N/A	N/A
Hornsby Bend Water	\$ 1,784,098	\$ 1,960,790	\$ 2,049,255	9.90%	\$	\$	14.86%	4.51%
Hornsby Bend Sewer	\$ 1,642,312	\$ 1,804,924	\$ 1,885,995	9.90%	\$	\$	14.84%	4.49%
<b>Total All Companies</b>	<b>\$ 4,966,972</b>	<b>\$ 5,491,944</b>	<b>\$ 5,661,480</b>	<b>10.57%</b>	<b>\$</b>	<b>\$</b>	<b>13.98%</b>	<b>4.50%</b>

Application for a Rate/Tariff Change - SWWC Utilities, Inc.

Appendix 14 - Rate Comparisons and Annualized Test Year Revenue

Table Appendix 14.II.A - Revenues  
Water Services Current

Charge	Rate	Sales/Bills	Revenues
<b>Customer Charge</b>			
5/8" Meter	\$ 40.95	22,803	\$ 933,783
3/4"	\$ 40.95	-	\$ -
1"	\$ 102.38	147	\$ 15,050
1 1/2"	\$ 204.75	41	\$ 8,395
2"	\$ 327.60	12	\$ 3,931
3"	\$ 614.25	-	\$ -
4"	\$ 1,023.75	-	\$ -
6"	\$ 2,047.50	-	\$ -
8"	\$ 3,276.00	-	\$ -
10"	n/a	-	\$ -
12"	n/a	-	\$ -
<b>Total Customer Charge Revenues</b>			<b>\$ 961,159</b>
<b>Commodity Charge</b>			
0-2k Gallons	\$ 2.00	41,987	\$ 83,974.00
2k to 10k Gallons	\$ 2.30	89,013	\$ 204,730
10k to 20k Gallons	\$ 5.00	28,292	\$ 141,460
Over 20k Gallons	\$ 8.00	18,655	\$ 149,240
<b>Total Commodity Charge Revenues</b>			<b>\$ 579,404</b>
<b>Water Services Current Revenues</b>			<b>\$ 1,540,563</b>



Application for a Rate/Tariff Change - SWWC Utilities, Inc.

Appendix 14 - Rate Comparisons and Annualized Test Year Revenue

Table Appendix 14.II.A - Revenues

Charge	Water Services Requested			Revenues
	Rate	Sales/Bills		
Customer Charge				
5/8" Meter	\$ 40.95	22,803	\$	933,783
3/4"	\$ 61.43	-	\$	-
1"	\$ 102.38	147	\$	15,050
1 1/2"	\$ 204.75	41	\$	8,395
2"	\$ 327.60	12	\$	3,931
3"	\$ 614.25	-	\$	-
4"	\$ 1,023.75	-	\$	-
6"	\$ 2,047.50	-	\$	-
8"	\$ 3,276.00	-	\$	-
10"	\$ 4,709.25	-	\$	-
12"	\$ 10,237.50	-	\$	-
<b>Total Customer Charge Revenues</b>			<b>\$</b>	<b>961,159</b>
Commodity Charge				
0-2k Gallons	\$ 2.50	41,987	\$	104,967.50
2k to 10k Gallons	\$ 4.15	89,013	\$	369,404
10k to 20k Gallons	\$ 5.00	28,292	\$	141,460
Over 20k Gallons	\$ 8.00	18,655	\$	149,240
<b>Total Commodity Charge Revenues</b>			<b>\$</b>	<b>765,071</b>
<b>Water Services Requested Revenues</b>			<b>\$</b>	<b>1,726,230</b>

Application for a Rate/Tariff Change - SWWC Utilities, Inc.

Appendix 14 - Rate Comparisons and Annualized Test Year Revenue

Table Appendix 14.II.A - Revenues

Charge	Hornsby Bend Water Current			Revenues
	Rate	Sales/Bills		
Customer Charge				
5/8" Meter	\$ 40.95	22,743	\$	931,326
3/4"	\$ 40.95	-	\$	-
1"	\$ 102.38	46	\$	4,709
1 1/2"	\$ 204.75	16	\$	3,276
2"	\$ 327.60	37	\$	12,121
3"	\$ 614.25	22	\$	13,514
4"	\$ 1,023.75	-	\$	-
6"	\$ 2,047.50	-	\$	-
8"	\$ 3,276.00	-	\$	-
10"	\$ 4,709.25	-	\$	-
12"	\$ 10,237.50	-	\$	-
Wholesale	\$ 614.25	12	\$	7,371
<b>Total Customer Charge Revenues</b>			<b>\$</b>	<b>977,317</b>
Commodity Charge				
All Gallons	\$ 6.25	129,885	\$	811,781
<b>Total Commodity Charge Revenues</b>			<b>\$</b>	<b>811,781</b>
<b>Hornsby Bend Water Current Revenues</b>			<b>\$</b>	<b>1,784,098</b>

Application for a Rate/Tariff Change - SWWC Utilities, Inc.

Appendix 14 - Rate Comparisons and Annualized Test Year Revenue

Table Appendix 14.II.A - Revenues

Hornsby Bend Water Requested Phase I Rates				
Charge	Rate	Sales/Bills	Revenues	
<i>Customer Charge</i>				
5/8" Meter	\$ 45.00	22,743	\$	1,023,435
3/4"	\$ 67.50	-	\$	-
1"	\$ 112.50	46	\$	5,175
1 1/2"	\$ 225.00	16	\$	3,600
2"	\$ 360.00	37	\$	13,320
3"	\$ 675.00	22	\$	14,850
4"	\$ 1,125.00	-	\$	-
6"	\$ 2,250.00			
8"	\$ 3,600.00			
10"	\$ 5,175.00			
12"	\$ 11,250.00			
Wholesale	\$ 675.00	12	\$	8,100
<b>Total Customer Charge Revenues</b>			\$	<b>1,068,480</b>
<i>Commodity Charge</i>				
All Gallons	\$ 6.87	129,885	\$	892,309.95
<b>Total Commodity Charge Revenues</b>			\$	<b>892,310</b>
<b>Hornsby Bend Water Requested Phase I Rates Revenues</b>			\$	<b>1,960,790</b>

Application for a Rate/Tariff Change - SWWC Utilities, Inc.

Appendix 14 - Rate Comparisons and Annualized Test Year Revenue

Table Appendix 14.II.A - Revenues

Hornsby Bend Water Requested Phase II Rates				
Charge	Rate	Sales/Bills	Revenues	
<i>Customer Charge</i>				
5/8" Meter	\$ 47.03	22,743	\$ 1,069,603	
3/4"	\$ 70.55	-	\$ -	
1"	\$ 117.58	46	\$ 5,409	
1 1/2"	\$ 235.15	16	\$ 3,762	
2"	\$ 376.24	37	\$ 13,921	
3"	\$ 705.45	22	\$ 15,520	
4"	\$ 1,175.75	-	\$ -	
6"	\$ 2,351.50	-	\$ -	
8"	\$ 3,762.40	-	\$ -	
10"	\$ 5,408.45	-	\$ -	
12"	\$ 11,757.50	-	\$ -	
Wholesale	\$ 705.45	12	\$ 8,465	
<b>Total Customer Charge Revenues</b>			<b>\$ 1,116,681</b>	
<i>Commodity Charge</i>				
All Gallons	\$ 7.18	129,885	\$ 932,574.30	
<b>Total Commodity Charge Revenues</b>			<b>\$ 932,574</b>	
<b>Hornsby Bend Water Requested Phase II Rates Revenues</b>			<b>\$ 2,049,255</b>	

Application for a Rate/Tariff Change - SWWC Utilities, Inc.

Appendix 14 - Rate Comparisons and Annualized Test Year Revenue

Table Appendix 14.II.A - Revenues

Customer Charge		Rate	Sales/Bills	Revenues
5/8" Meter	\$	39.55	22,906	\$ 905,932
3/4"	\$	39.55	-	\$ -
1"	\$	98.88	24	\$ 2,373
1 1/2"	\$	197.75	-	\$ -
2"	\$	316.40	12	\$ 3,797
3"	\$	593.25	12	\$ 7,119
4"	\$	988.75	-	\$ -
6"	\$	1,977.50	-	\$ -
8"	\$	3,164.00	-	\$ -
10"	\$	4,548.25	-	\$ -
12"	\$	9,887.50	-	\$ -
Wholesale	\$	593.25	12	\$ 7,119
<b>Total Customer Charge Revenues</b>				<b>\$ 926,340</b>
<b>Commodity Charge</b>				
All Gallons	\$	6.27	114,190	\$ 715,971.30
<b>Total Commodity Charge Revenues</b>				<b>\$ 715,971</b>
<b>Hornsby Bend Sewer Current Revenues</b>				<b>\$ 1,642,312</b>

Application for a Rate/Tariff Change - SWWC Utilities, Inc.

Appendix 14 - Rate Comparisons and Annualized Test Year Revenue

Table Appendix 14.II.A - Revenues

Hornsby Bend Sewer Requested Phase I Rates				
Charge	Rate	Sales/Bills	Revenues	
Customer Charge				
5/8" Meter	\$ 43.47	22,906	\$	995,724
3/4"	\$ 65.21	-	\$	-
1"	\$ 108.68	24	\$	2,608
1 1/2"	\$ 217.35	-	\$	-
2"	\$ 347.76	12	\$	4,173
3"	\$ 652.05	12	\$	7,825
4"	\$ 1,086.75	-	\$	-
6"	\$ 2,173.50	-	\$	-
8"	\$ 3,477.60	-	\$	-
10"	\$ 4,999.05	-	\$	-
12"	\$ 10,867.50	-	\$	-
Wholesale	\$ 652.05	12	\$	7,825
<b>Total Customer Charge Revenues</b>			\$	<b>1,018,154</b>
Commodity Charge				
All Gallons	\$ 6.89	114,190	\$	786,769.10
<b>Total Commodity Charge Revenues</b>			\$	<b>786,769</b>
<b>Hornsby Bend Sewer Requested Phase I Rates Revenues</b>			\$	<b>1,804,924</b>

Application for a Rate/Tariff Change - SMWC Utilities, Inc.

Appendix 14 - Rate Comparisons and Annualized Test Year Revenue

Table Appendix 14, II.A - Revenues  
Hornsby Bend Sewer Requested Phase II Rates

Charge	Rate	Sales/Bills	Revenues
<i>Customer Charge</i>			
5/8" Meter	\$ 45.42	22,906	\$ 1,040,391
3/4"	\$ 68.13	-	\$ -
1"	\$ 113.55	24	\$ 2,725
1 1/2"	\$ 227.10	-	\$ -
2"	\$ 363.36	12	\$ 4,360
3"	\$ 681.30	12	\$ 8,176
4"	\$ 1,135.50	-	\$ -
6"	\$ 2,271.00	-	\$ -
8"	\$ 3,633.60	-	\$ -
10"	\$ 5,223.30	-	\$ -
12"	\$ 11,355.00	-	\$ -
Wholesale	\$ 681.30	12	\$ 8,176
<b>Total Customer Charge Revenues</b>			<b>\$ 1,063,827</b>
<i>Commodity Charge</i>			
All Gallons	\$ 7.20	114,190	\$ 822,168.00
<b>Total Commodity Charge Revenues</b>			<b>\$ 822,168</b>
<b>Hornsby Bend Sewer Requested Phase II Rates Revenues</b>			<b>\$ 1,885,995</b>

Application for a Rate/Tariff Change - SWWC Utilities, Inc.

Appendix 14 - Rate Comparisons and Annualized Test Year Revenue

Table 14.III.A. - Current vs. Requested Rate Comparison

Meter Size	Water Services, Inc.					
	Current Rates		Requested Rates			
	10,000 Gallons/Mo.	30,000 Gallons/Mo.	10,000 Gallons/Mo.	10,000 Gallons/Mo.	10,000 Gallons/Mo.	30,000 Gallons/Mo.
5/8"	\$ 63.35	\$ 193.35	\$ 79.15	\$ 209.15	\$ 79.15	\$ 209.15
3/4"	\$ 63.35	\$ 193.35	\$ 99.63	\$ 229.63	\$ 99.63	\$ 229.63
1"	\$ 124.78	\$ 254.78	\$ 140.58	\$ 270.58	\$ 140.58	\$ 270.58
1½"	\$ 227.15	\$ 357.15	\$ 242.95	\$ 372.95	\$ 242.95	\$ 372.95
2"	\$ 350.00	\$ 480.00	\$ 365.80	\$ 495.80	\$ 365.80	\$ 495.80
3"	\$ 636.65	\$ 766.65	\$ 652.45	\$ 782.45	\$ 652.45	\$ 782.45
4"	\$ 1,046.15	\$ 1,176.15	\$ 1,061.95	\$ 1,191.95	\$ 1,061.95	\$ 1,191.95
6"	\$ 2,069.90	\$ 2,199.90	\$ 2,085.70	\$ 2,215.70	\$ 2,085.70	\$ 2,215.70
8"	\$ 3,298.40	\$ 3,428.40	\$ 3,314.20	\$ 3,444.20	\$ 3,314.20	\$ 3,444.20
10"	n/a	n/a	\$ 4,747.45	\$ 4,877.45	\$ 4,747.45	\$ 4,877.45
12"	n/a	n/a	\$ 10,275.70	\$ 10,405.70	\$ 10,275.70	\$ 10,405.70

Meter Size	Hornsby Bend Water					
	Current Rates		Requested Rates - Phase I		Requested Rates - Phase II	
	10,000 Gallons/Mo.	30,000 Gallons/Mo.	10,000 Gallons/Mo.	30,000 Gallons/Mo.	10,000 Gallons/Mo.	30,000 Gallons/Mo.
5/8"	\$ 103.45	\$ 228.45	\$ 113.70	\$ 251.10	\$ 118.83	\$ 262.43
3/4"	\$ 103.45	\$ 228.45	\$ 136.20	\$ 273.60	\$ 142.35	\$ 285.95
1"	\$ 164.88	\$ 289.88	\$ 181.20	\$ 318.60	\$ 189.38	\$ 332.98
1½"	\$ 267.25	\$ 392.25	\$ 293.70	\$ 431.10	\$ 306.95	\$ 450.55
2"	\$ 390.10	\$ 515.10	\$ 428.70	\$ 566.10	\$ 448.04	\$ 591.64
3"	\$ 676.75	\$ 801.75	\$ 743.70	\$ 881.10	\$ 777.25	\$ 920.85
4"	\$ 1,086.25	\$ 1,211.25	\$ 1,193.70	\$ 1,331.10	\$ 1,247.55	\$ 1,391.15
6"	\$ 2,110.00	\$ 2,235.00	\$ 2,318.70	\$ 2,456.10	\$ 2,423.30	\$ 2,566.90
8"	\$ 3,338.50	\$ 3,463.50	\$ 3,668.70	\$ 3,806.10	\$ 3,834.20	\$ 3,977.80
10"	\$ 4,771.75	\$ 4,896.75	\$ 5,243.70	\$ 5,381.10	\$ 5,480.25	\$ 5,623.85
12"	\$ 10,300.00	\$ 10,425.00	\$ 11,318.70	\$ 11,456.10	\$ 11,829.30	\$ 11,972.90



Application for a Rate/Tariff Change - SWWC Utilities, Inc.

Appendix 14 - Rate Comparisons and Annualized Test Year Revenue

Table 14.III.A. - Current vs. Requested Rate Comparison

Meter Size	Hornsby Bend Sewer		
	Current Rates 10,000 Gallons/Mo.	Requested Rates - Phase I 10,000 Gallons/Mo.	Request Rates - Phase II 10,000 Gallons/Mo.
5/8" Meter	\$ 102.25	\$ 112.37	\$ 117.42
3/8"	\$ 102.25	\$ 134.11	\$ 140.13
1"	\$ 161.58	\$ 177.58	\$ 185.55
1½"	\$ 260.45	\$ 286.25	\$ 299.10
2"	\$ 379.10	\$ 416.66	\$ 435.36
3"	\$ 655.95	\$ 720.95	\$ 753.30
4"	\$ 1,051.45	\$ 1,155.65	\$ 1,207.50
6"	\$ 2,040.20	\$ 2,242.40	\$ 2,343.00
8"	\$ 3,226.70	\$ 3,546.50	\$ 3,705.60
10"	\$ 4,610.95	\$ 5,067.95	\$ 5,295.30
12"	\$ 9,950.20	\$ 10,936.40	\$ 11,427.00

Bryan W. Shaw, Ph.D., *Chairman*  
Buddy Garcia, *Commissioner*  
Carlos Rubinstein, *Commissioner*  
Mark R. Vickery, P.G., *Executive Director*



## TEXAS COMMISSION ON ENVIRONMENTAL QUALITY

*Protecting Texas by Reducing and Preventing Pollution*

July 20, 2011

Mr. David L. Yohe,  
Regional Regulatory Compliance Manager  
Southwest Water Company  
9511 Ranch Road 620M  
Austin, TX 78726

Re: Complaint Investigation at:  
Bavarian Hills, Borgfeld Rd, Bexar County, Texas  
RN101211605, TCEQ Additional ID: 0150235, Investigation No. 936920

Dear Mr. Yohe:

On April 27, 2011, Jay Don Jobson of the Texas Commission on Environmental Quality (TCEQ) San Antonio Region Office conducted a complaint investigation of the above-referenced facility to evaluate compliance with applicable requirements for public water supply systems in addition we received adequate compliance documentation on May 4, 2011 to resolve the alleged violation documented during the investigation of the above-referenced regulated entity conducted on February 28, 2011. The subject matter of this violation and the complaint are correlated. Based on the information submitted, no further action is required.

The Texas Commission on Environmental Quality appreciates your assistance in this matter and your compliance efforts to ensure protection of the State's environment. If you or members of your staff have any questions, please feel free to contact Mr. Jay Jobson at the San Antonio Region Office at (210) 403-4056.

Sincerely,

A handwritten signature in cursive script, appearing to read "Joy Thurston-Cook".

Joy Thurston-Cook  
Water Section Work Leader  
San Antonio Region Office

JMTC/JJ/eg

REPLY TO: REGION 13 • 14250 JUDSON RD. • SAN ANTONIO, TEXAS 78233-4480 • 210-490-3096 • FAX 210-545-4329

P.O. Box 13087 • Austin, Texas 78711-3087 • 512-239-1000 • Internet address: [www.tceq.state.tx.us](http://www.tceq.state.tx.us)

printed on recycled paper using soy-based ink

# Summary of Investigation Findings

BAVARIAN HILLS

Investigation # 936920

, BEXAR COUNTY,

Investigation Date: 07/05/2011

Additional ID(s): 0150235

## ALLEGED VIOLATION(S) NOTED AND RESOLVED

Track No: 428848

30 TAC Chapter 290.46(r)

### Alleged Violation:

Investigation: 901004

Comment Date: 4/4/2011

Failure to maintain a water distribution system to provide at all times a minimum pressure of 35 pounds per square inch (psi) at flow rates of at least 1.5 gallons per minute at each service outlet or connection. When the regulated entity is intended to provide fire fighting capability, it must also be designed to maintain a minimum pressure of 20 psi under combined fire and drinking water flow conditions. At the time of the investigation, the pressure at the end of the distribution system was measured at 30 psi.

Investigation: 936920

Comment Date: 7/5/2011

Compliance documentation received 05/04/2011.

**Recommended Corrective Action:** Maintain the pressure in the distribution system at a minimum of 35 psi at all times. Compliance documentation: submit a description of the action taken and verification that the minimum pressure is being maintained.

**Resolution:** Compliance documentation received 05/04/2011.

## TCEQ Complaint Report

07/19/2011  
1:49:26PM

**Incident No:** 153673  
**Media Type:** Water  
**Start Date:** Unknown  
**Received Date:** 04/25/2011  
**Method :**

**Staff Member:** JJOBSON  
**Status:** Closed  
**Status Date:** 07/19/2011  
**Priority:** Within 30 Calendar Days

**Regulated Entity:** Bavarian Hills  
**RN101211605**

**Address:**

Bexar County

**Physical Location:** 3 M W OF HWY 281 N ON BORGFELD ROAD

**Responsible Party:** Swwc Utilities Inc  
**Address:** 9511 Ranch Road 620 N, Austin, TX 78726  
**Work Phone:** (512)219-2294

**Title:** Environmental Coordinator

**Number Complaining:** 1  
**Frequency:** Current  
**Alleged Source:** Bavarian Hills

**Program Group:** Public Water  
System/Supply  
**Nature:** Wss  
**Effect:** Environmental

**Initial Problem**

On 04/25/2011, the TCEQ San Antonio Regional Office was forwarded a complaint from the TCEQ Hotline advising that the Bavarian Hills Water System residents have been without water since 04/21/2011 3:00 PM. Complainant advised that when they reported to SWWC Utilities Inc; dba Water Services Inc., they stated that they did not know when the problem will be resolved.

**Action Taken**

04/27/2011 - Contacted Tim Williford, with Southwest Water Company, concerning the water outage which occurred from 04/21 - 25/2011. He stated that the system has had an ongoing problem with low pressure and water loss. They identified several leaks in the system and began repairs on the 21st. Half of the subdivision was in and out of water while making repairs on the 22nd. The system hand delivered "Boil Water" notices on the morning of the 23rd. On the 24th, they found the cause of recent problems with low pressure in an old butterfly valve which had failed and was almost completely closed. The valve was by-passed and the sudden increase in pressure (70 psi at the far end of the distribution system) caused several sizable leaks in the main line. This, in turn, caused the ground storage tanks to drain. On the evening of the 26th, the final leak was found and repaired. The system was slowly re-pressurized and the ground storage tanks were able to maintain capacities. Bacteriological samples were collected on the 27th and submitted for analysis.

04/28/2011 - Southwest Water Company received notice from Pollution Control Services (laboratory) that the samples submitted on 04/27/2011, were coliform negative. The "Boil Water Notice" was lifted.

**Closure Comments**

No violations noted.

TCEQ Complaint Report

06/30/2011  
1:50:59PM

Jay Don Johnson  
Investigator

Jay Duke-Cook  
Region or Program Manager  
7.5.2011  
Date

Bryan W. Shaw, Ph.D., *Chairman*  
Buddy Garcia, *Commissioner*  
Carlos Rubinstein, *Commissioner*  
Mark R. Vickery, P.G., *Executive Director*



## TEXAS COMMISSION ON ENVIRONMENTAL QUALITY

*Protecting Texas by Reducing and Preventing Pollution*

April 15, 2011

**CERTIFIED MAIL NO: 91 7108 2133 3934 3873 1633**  
**RETURN RECEIPT REQUESTED**

Mr. David Yohe  
Regional Regulatory Compliance Manager  
Southwest Water Company  
9511 Ranch Road 620 N  
Austin, TX 78726

Re: Notice of Violation for the Compliance Evaluation Investigation at:  
Bavarian Hills, Borgfeld Road, Bexar County, Texas  
Regulated Entity No.:RN101211605, TCEQ ID No.:0150235, Investigation No.:901004

Dear Mr. Yohe:

On February 28, 2011, Jay Don Jobson of the Texas Commission on Environmental Quality (TCEQ) San Antonio Region Office conducted an investigation of the above-referenced regulated entity to evaluate compliance with applicable requirements for public water supply systems. Enclosed is a summary which lists the investigation findings. During the investigation, a concern was noted which was an alleged noncompliance that has been resolved as an Area of Concern based on subsequent corrective action. In addition, a certain outstanding alleged violation was identified for which compliance documentation is required. Please submit to this office by June 30, 2011, a written description of corrective action taken and the required documentation demonstrating that compliance has been achieved for the outstanding alleged violation.

In the listing of the alleged violations, we have cited applicable requirements, including TCEQ rules. Please note that both the rules themselves and the agency brochure entitled *Obtaining TCEQ Rules* (GI 032) are located on our agency website at <http://www.tceq.state.tx.us> for your reference. If you would like a hard copy of this brochure mailed to you, you may call and request one from either the San Antonio Region Office at (210)490-3096 or the Central Office Publications Ordering Team at 512-239-0028.

The TCEQ appreciates your assistance in this matter. Please note that the Legislature has granted TCEQ enforcement powers which we may exercise to ensure compliance with environmental regulatory requirements. We anticipate that you will resolve the alleged violations as required in order to protect the State's environment. If you have additional information that we are unaware of, you have the opportunity to contest the violations documented in this notice. Should you choose to do so, you must notify the San Antonio Region Office within 10 days from the date of this letter. At that time, Ms. Lynn Bumguardner, Water

REPLY TO: REGION 13 • 14250 JUDSON RD. • SAN ANTONIO, TEXAS 78233-4480 • 210-490-3096 • FAX 210-545-4329

P.O. Box 13087 • Austin, Texas 78711-3087 • 512-239-1000 • Internet address: [www.tceq.state.tx.us](http://www.tceq.state.tx.us)

printed on recycled paper using soy based ink

Mr. David Yohe  
April 15, 2011  
Page 2

Section Manager, will schedule a violation review meeting to be conducted within 21 days from the date of this letter. However, please be advised that if you decide to participate in the violation review process, the TCEQ may still require you to adhere to the compliance schedule included in the attached Summary of Investigation Findings until an official decision is made regarding the status of any or all of the contested violations.

If you or members of your staff have any questions, please feel free to contact Mr. Jay Don Jobson in the San Antonio Region Office at (210)403-4056.

Sincerely,



Joy Thurston-Cook  
Water Section Work Leader  
San Antonio Region Office

JTC/JDJ/eg

Enclosure: Summary of Investigation Findings

# Summary of Investigation Findings

BAVARIAN HILLS

Investigation # 901004

Investigation Date: 02/28/2011

, BEXAR COUNTY,

Additional ID(s): 0150235

## OUTSTANDING ALLEGED VIOLATION(S) ASSOCIATED TO A NOTICE OF VIOLATION

Track No: 428848

Compliance Due Date: 06/30/2011

30 TAC Chapter 290.46(r)

### Alleged Violation:

Investigation: 901004

Comment Date: 4/4/2011

Failure to maintain a water distribution system to provide at all times a minimum pressure of 35 pounds per square inch (psi) at flow rates of at least 1.5 gallons per minute at each service outlet or connection. When the regulated entity is intended to provide fire fighting capability, it must also be designed to maintain a minimum pressure of 20 psi under combined fire and drinking water flow conditions. At the time of the investigation, the pressure at the end of the distribution system was measured at 30 psi.

**Recommended Corrective Action:** Maintain the pressure in the distribution system at a minimum of 35 psi at all times. Compliance documentation: submit a description of the action taken and verification that the minimum pressure is being maintained.



**Summary of Investigation Findings**

BAVARIAN HILLS

Investigation # 901004

, BEXAR COUNTY,

Investigation Date: 02/28/2011

Additional ID(s): 0150235

**AREA OF CONCERN**

Track No: 428850

30 TAC Chapter 290.46(m)

**Alleged Violation:**

Investigation: 901004

Comment Date: 4/4/2011

Failure to repair or replace the cracked concrete sealing block surrounding Well Number 1.

**Recommended Corrective Action:** Repair OR replace the cracked sealing block at Well #1 using a flexible, nontoxic, waterproof compound OR with a properly constructed and installed sealing block.  
Compliance documentation: submit a photo of the repaired OR replaced sealing block.

**Resolution:** Compliance documentation received 03/11/2011.



May 23, 2011

Ms. Joy Thurston-Cook  
Water Section Work Leader  
TCEQ – San Antonio Regional Office  
14250 Judson Road  
San Antonio, TX 78233-4480

Re: SWWC Utilities, Inc. (the Utility)  
Bavarian Hills Water System – P.W.S. #0150235

Dear Ms. Thurston-Cook:

In February of this year, Mr. Jay Don Jobson performed a compliance investigation at the above referenced water system. One alleged violation was noted.

Track No. 428848 – Failure to maintain a minimum operating pressure of 35 PSI throughout the distribution system at all times.

The Utility's staff performed an evaluation of the distribution system and located a valve that was encased in concrete that was only open a few turns. The valve was cleared of concrete and opened fully. Pressure in the far reaches of the system have improved and have been above 35 PSI for an extended period of time. Enclosed is a copy of a circular chart showing pressures well above the minimum requirement. A copy of this chart had previously been supplied to Mr. Jobson.

The Utility believes this violation to be resolved.

If there are any questions please contact the Utility at (512) 219-2272.

Sincerely,

David L. Yohe  
Regional Regulatory Compliance Manager  
SouthWest Water Company

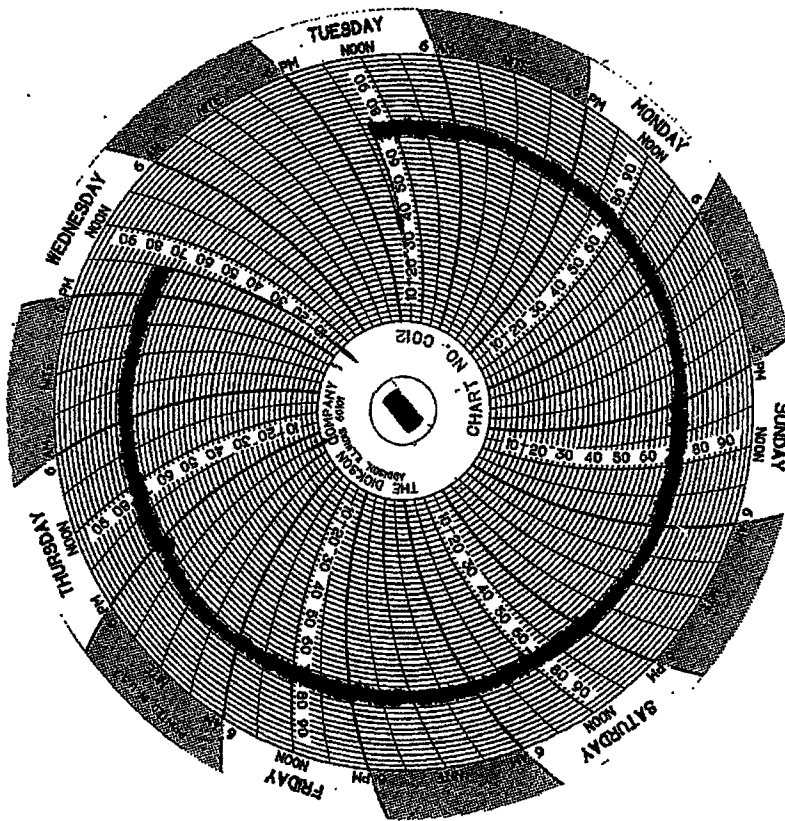
Enclosure

Cc: Charles Profflet  
Gary Rose

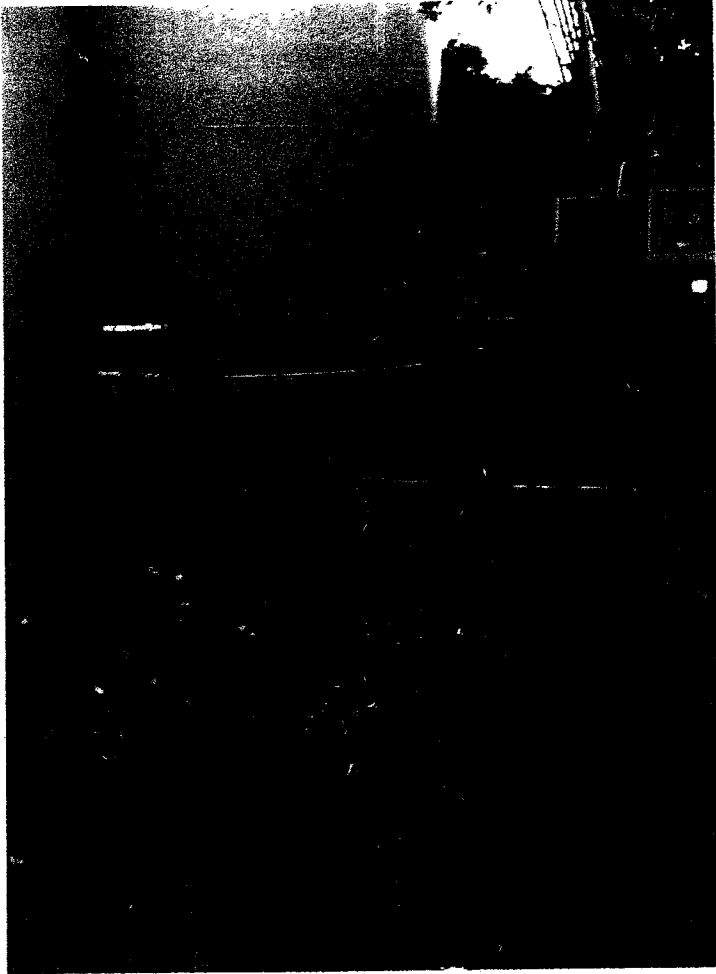
Tim Williford  
Albert Amezcuita

Joe Torralva

G:/DY/TCEQ/BVHL/InvestResp.052311.gs



BAVARIAN HILLS  
 28526 Bonn Mountain  
 April 26 - May 4, 2011



BAVARIAN HILLS  
0150235



Beverly Hills  
0150235

Bryan W. Shaw, Ph.D., *Chairman*  
Buddy Garcia, *Commissioner*  
Carlos Rubinstein, *Commissioner*  
Mark R. Vickery, P.G., *Executive Director*



Rec. 10-12-11  
- Dlyple

## TEXAS COMMISSION ON ENVIRONMENTAL QUALITY

*Protecting Texas by Reducing and Preventing Pollution*

October 7, 2011

Mr. David Yohe, Regional Manager Environmental Affairs  
Southwest Water Company  
9511 Ranch Road 620 North  
Austin, Texas 78726-2908

Re: Compliance Evaluation Investigation at:  
Cascade Mobile Home Park, Kendall County, Texas  
Regulated Entity No.: RN101227015  
TCEQ ID No.: 1300005, Investigation No.: 958038

Dear Mr. Yohe:

On September 21, 2011, Ms. Stacy Tanner of the Texas Commission on Environmental Quality (TCEQ) San Antonio Region Office conducted an investigation of the above-referenced facility to evaluate compliance with applicable requirements for public water supply. No violations were being alleged however; Additional Issues were noted.

The TCEQ appreciates your assistance in this matter and your compliance efforts to ensure protection of the State's environment. If you or members of your staff have any questions regarding these matters, please feel free to contact Ms. Stacy Tanner in the San Antonio Region Office at (210) 403-4078.

Sincerely,

A handwritten signature in cursive script, appearing to read "Joy Thurston-Cook".

Joy Thurston-Cook  
Water Section Work Leader  
San Antonio Region Office

JTC/SMT/eg

REPLY TO: REGION 13 • 14250 JUDSON RD. • SAN ANTONIO, TEXAS 78233-4480 • 210-490-3096 • FAX 210-545-4329

P.O. Box 13087 • Austin, Texas 78711-3087 • 512-239-1000 • Internet address: [www.tceq.state.tx.us](http://www.tceq.state.tx.us)

printed on 100% recycled paper

# Summary of Investigation Findings

CASCADE MOBILE HOME PARK

Investigation # 958038

, KENDALL COUNTY,

Investigation Date: 09/21/2011

Additional ID(s): 1300005

No Violations Associated to this Investigation

## ADDITIONAL ISSUES

### Description

Item 1

### Additional Comments

30 TEX. ADMIN. CODE, §291.93(3)

A retail public utility that possesses a certificate of public convenience and necessity that has reached 85% of its capacity as compared to the most restrictive criteria of the commission's minimum capacity requirements in Chapter 290 of this title shall submit to the executive director a planning report that clearly explains how the retail public utility will provide the expected service demands to the remaining areas within the boundaries of its certificated area. A report is not required if the source of supply available to the utility service provider is reduced to below the 85% level due to a court or agency conservation order unless that order is expected to extend for more than 18 months from the date it is entered in which case a report shall be required. Specifically, the ground storage tank and pressure tank has reached 100% capacity.

Item 2

30 TEX. ADMIN. CODE, '290.46(m)

One of the pressure tanks at the well site is beginning to show some signs of corrosion. This tank should be evaluated to verify its integrity. A compliance investigation was done 9/21/11 and plans have been submitted to replace the two ground storage tanks and two pressure tanks on site.

Bryan W. Shaw, Ph.D., *Chairman*  
Buddy Garcia, *Commissioner*  
Carlos Rubinstein, *Commissioner*  
Mark R. Vickery, P.G., *Executive Director*



Scan sent 5/16/11

## TEXAS COMMISSION ON ENVIRONMENTAL QUALITY

*Protecting Texas by Reducing and Preventing Pollution*

May 11, 2011

Mr. David Yohe, Regional Manager Environmental Affairs  
Southwest Water Company  
9511 Ranch Road 620 North  
Austin, Texas 78726-2908

Re: Compliance Evaluation Investigation at:  
Coolcrest Water System, 2.5 miles West FM 1604 on FM 1957, Bexar County, Texas  
Regulated Entity No.: RN101253227  
TCEQ ID No.: 0150046, Investigation No.: 915185

Dear Mr. Yohe:

On March 30, 2011, Ms. Stacy Tanner of the Texas Commission on Environmental Quality (TCEQ) San Antonio Region Office conducted an investigation of the above-referenced facility to evaluate compliance with applicable requirements for public water supply. No violations are being alleged as a result of the investigation.

The TCEQ appreciates your assistance in this matter and your compliance efforts to ensure protection of the State's environment. If you or members of your staff have any questions regarding these matters, please feel free to contact Ms. Stacy Tanner in the San Antonio Region Office at (210) 403-4078.

Sincerely,

A handwritten signature in black ink, appearing to read "Joy Thurston-Cook".

Joy Thurston-Cook  
Water Section Work Leader  
San Antonio Region Office

JTC/SMT/eg

REPLY TO: REGION 13 • 14250 JUDSON RD. • SAN ANTONIO, TEXAS 78233-4480 • 210-490-3096 • FAX 210-545-4329

P.O. Box 13087 • Austin, Texas 78711-3087 • 512-239-1000 • Internet address: [www.tceq.state.tx.us](http://www.tceq.state.tx.us)



Bryan W. Shaw, Ph.D., *Chairman*  
Buddy Garcia, *Commissioner*  
Carlos Rubinstein, *Commissioner*  
Mark R. Vickery, P.G., *Executive Director*



## TEXAS COMMISSION ON ENVIRONMENTAL QUALITY

*Protecting Texas by Reducing and Preventing Pollution*

May 2, 2011

Mr. David Yohe, Regional Manager Environmental Affairs  
Southwest Water Company  
9511 Ranch Road 620 North  
Austin, Texas 78726-2908

Re: Compliance Evaluation Investigation at:  
Country Springs Water Company, Boerne Stage Road N of Scenic Loop Road in NW,  
Bexar County, Texas  
Regulated Entity No.: RN101186138  
TCEQ ID No.: 0150421, Investigation No.: 913594

Dear Mr. Yohe:

On March 30, 2011, Ms. Stacy Tanner of the Texas Commission on Environmental Quality (TCEQ) San Antonio Region Office conducted an investigation of the above-referenced facility to evaluate compliance with applicable requirements for public water supply. No violations are being alleged as a result of the investigation.

The TCEQ appreciates your assistance in this matter and your compliance efforts to ensure protection of the State's environment. If you or members of your staff have any questions regarding these matters, please feel free to contact Ms. Stacy Tanner in the San Antonio Region Office at (210) 403-4078.

Sincerely,

A handwritten signature in cursive script, appearing to read "Joy Thurston-Cook".

Joy Thurston-Cook  
Water Section Work Leader  
San Antonio Region Office

JTC/SMT/eg

REPLY TO: REGION 13 • 14250 JUDSON RD. • SAN ANTONIO, TEXAS 78233-4480 • 210-490-3096 • FAX 210-545-4329

P.O. Box 13087 • Austin, Texas 78711-3087 • 512-239-1000 • Internet address: [www.tceq.state.tx.us](http://www.tceq.state.tx.us)

printed on recycled paper using soy based ink

Bryan W. Shaw, Ph.D., *Chairman*  
Buddy Garcia, *Commissioner*  
Carlos Rubinstein, *Commissioner*  
Mark R. Vickery, P.G., *Executive Director*



## TEXAS COMMISSION ON ENVIRONMENTAL QUALITY

*Protecting Texas by Reducing and Preventing Pollution*

April 29, 2011

Mr. David Yohe, Regional Manager Environmental Affairs  
Southwest Water Company  
9511 Ranch Road 620 North  
Austin, Texas 78726-2908

Re: Compliance Evaluation Investigation at:  
Garden Oaks, S of New Braunfels on FM 725, Comal County, New Braunfels, Texas  
Regulated Entity No.: RN101204634  
TCEQ ID No.: 0940030, Investigation No.: 913855

Dear Mr. Yohe:

On March 29, 2011, Ms. Stacy Tanner of the Texas Commission on Environmental Quality (TCEQ) San Antonio Region Office conducted an investigation of the above-referenced facility to evaluate compliance with applicable requirements for public water supply. No violations are being alleged as a result of the investigation.

The TCEQ appreciates your assistance in this matter and your compliance efforts to ensure protection of the State's environment. If you or members of your staff have any questions regarding these matters, please feel free to contact Ms. Stacy Tanner in the San Antonio Region Office at (210) 403-4078.

Sincerely,

A handwritten signature in black ink, appearing to read "Joy Thurston-Cook".

Joy Thurston-Cook  
Water Section Work Leader  
San Antonio Region Office

JTC/SMT/eg

REPLY TO: REGION 13 • 14250 JUDSON RD. • SAN ANTONIO, TEXAS 78233-4480 • 210-490-3096 • FAX 210-545-4329

P.O. Box 13087 • Austin, Texas 78711-3087 • 512-239-1000 • Internet address: [www.tceq.state.tx.us](http://www.tceq.state.tx.us)

Printed on recycled paper using soy-based ink