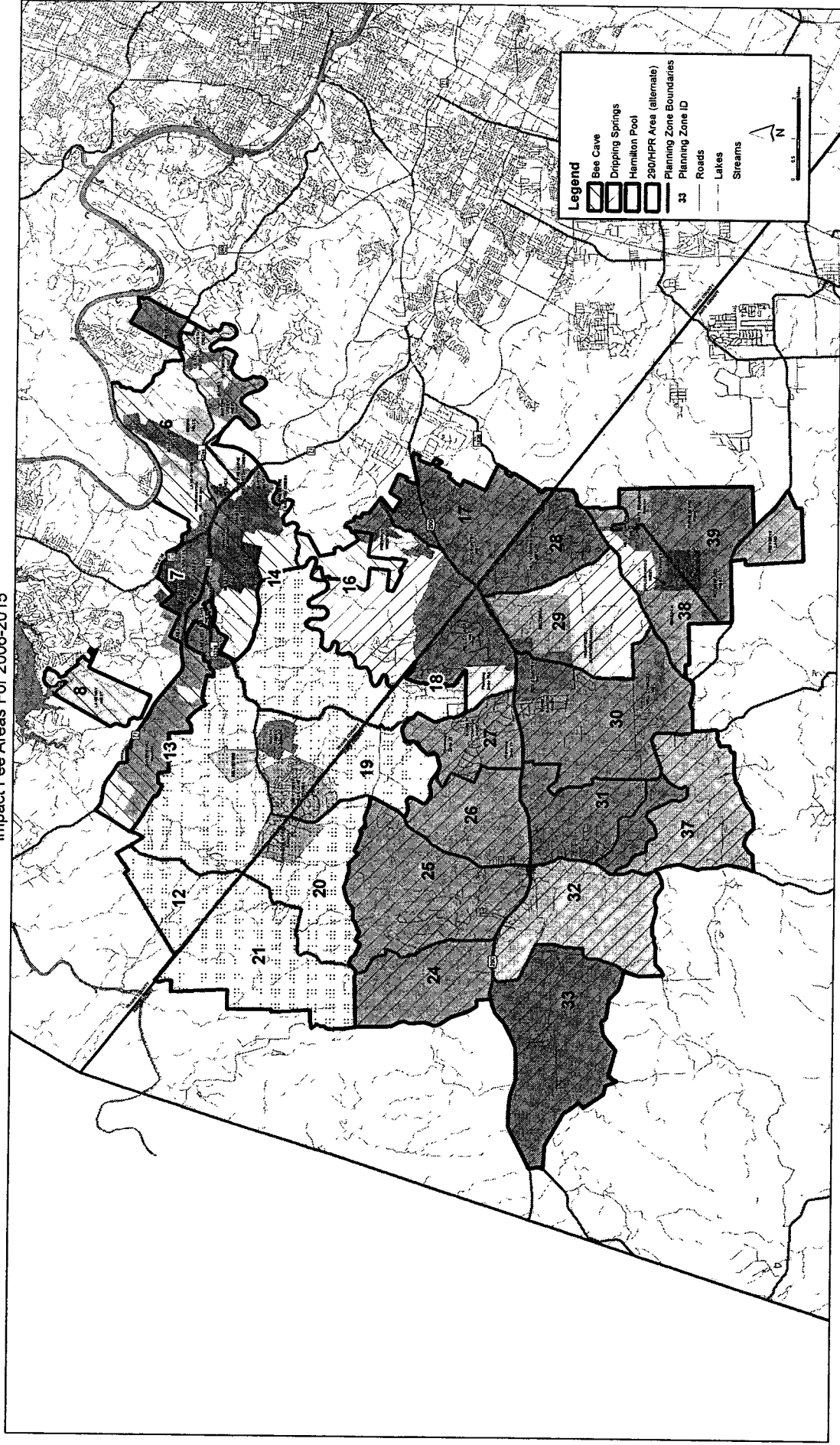
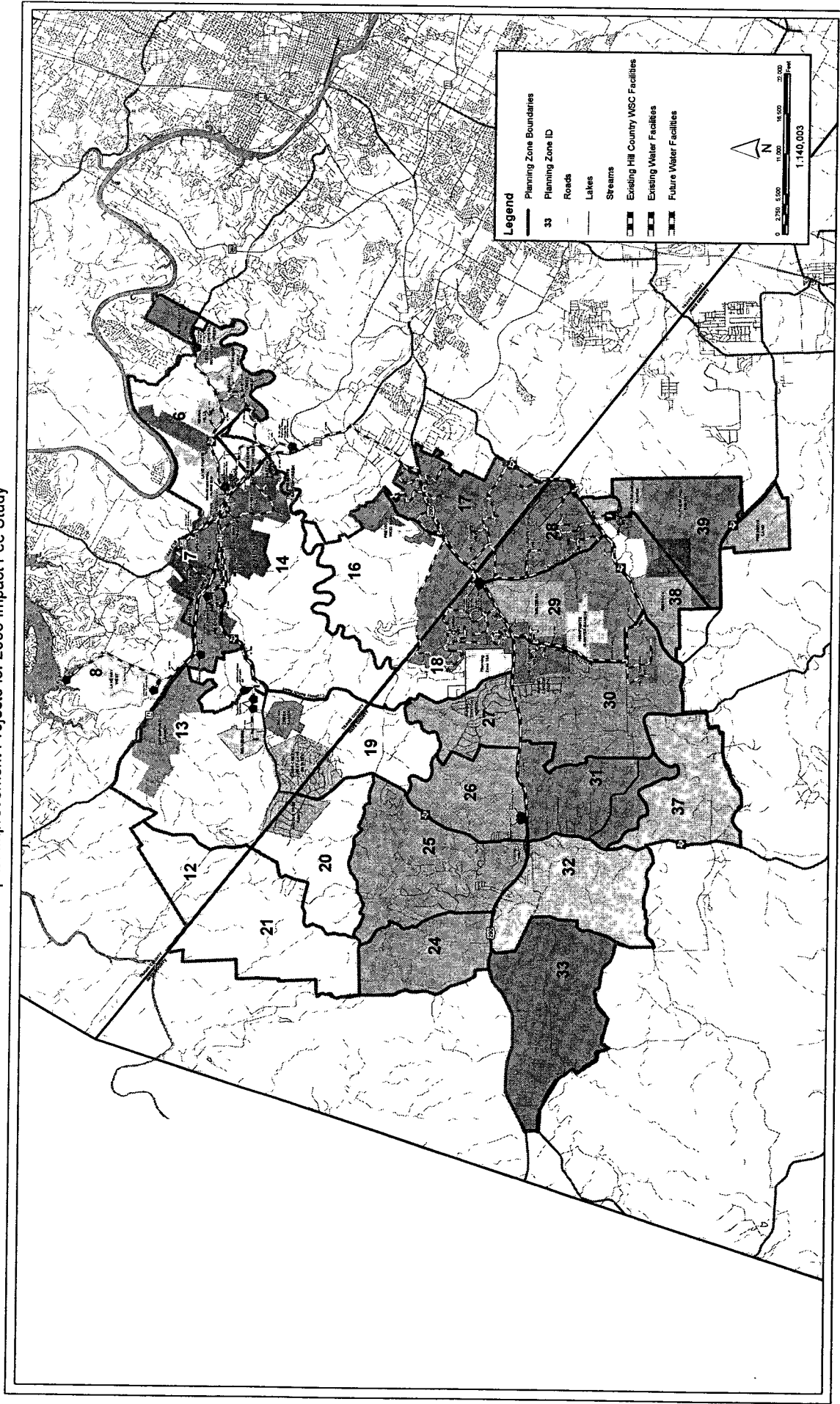


LCRA West Travis County Regional Water System
Impact Fee Areas For 2006-2015



LCRA West Travis County Regional Water System
Capital Improvement Projects for 2006 Impact Fee Study



06/15/2006

SOAH DOCKET NO. 582-08-2863

TCEQ DOCKET NO. 2008-0093-UCR

APPEAL OF THE RETAIL WATER) STATE OFFICE OF
AND WASTEWATER RATES OF)
THE LOWER COLORADO RIVER)
AUTHORITY)ADMINISTRATIVE HEARINGS

HEARING ON THE MERITS

WEDNESDAY, SEPTEMBER 8, 2010

COMPLETE TABLE OF CONTENTS

BE IT REMEMBERED THAT at 8:55 a.m., on
Wednesday, the 8th day of September 2010, the above-
entitled matter came on for hearing at the State Office
of Administrative Hearings, William P. Clements, Jr.,
Building, 300 West 15th Street, Room 404, Austin, Texas,
before HENRY CARD, Administrative Law Judge; and the
following proceedings were reported by Aloma J. Kennedy
and Kim Pence Ray, Certified Shorthand Reporters of:

Volume 11

Pages 2048 - 2389

KENNEDY
REPORTING
SERVICE

a record of excellence

1801 Lavaca • Suite 115 • Austin, Texas 78701 • 512-474-2233

TABLE OF CONTENTS

	PAGE
PROCEEDINGS, MONDAY, AUGUST 23, 2010 - VOL. 1	3
OPENING STATEMENT ON BEHALF OF THE LOWER COLORADO RIVER AUTHORITY (Abazari)	7
OPENING STATEMENT ON BEHALF OF WEST TRAVIS COUNTY MUD NOS. 3 AND 5 (Wilburn)	21
OPENING STATEMENT ON BEHALF OF THE CITY OF BEE CAVE (Mathews)	25
OPENING STATEMENT ON BEHALF OF THE EXECUTIVE DIRECTOR OF THE TEXAS COMMISSION ON ENVIRONMENTAL QUALITY (Siano)	31
PRESENTATION ON BEHALF OF THE LOWER COLORADO RIVER AUTHORITY	32
SUZANNE ZARLING	
- Direct (Harrison)	32
- Cross (Takeda)	34
- Cross (Mathews)	45
AFTERNOON SESSION	82
PRESENTATION ON BEHALF OF THE LOWER COLORADO RIVER AUTHORITY (CONTINUED)	82
SUZANNE ZARLING	
- Cross (Mathews - continued)	82
PROCEEDINGS RECESSED	215

TABLE OF CONTENTS

	PAGE
PROCEEDINGS, TUESDAY, AUGUST 24, 2010 - VOL. 2	217
PRESENTATION ON BEHALF OF THE LOWER COLORADO RIVER AUTHORITY (CONTINUED)	223
SUZANNE ZARLING	
- Cross (Mathews - Continued)	223
- Cross (Wilburn)	227
AFTERNOON SESSION	309
PRESENTATION ON BEHALF OF THE LOWER COLORADO RIVER AUTHORITY (CONTINUED)	309
SUZANNE ZARLING	
- Cross (Wilburn - Continued)	309
- Redirect (Harrison)	380
- Recross (Mathews)	385
- Recross (Wilburn)	389
KELLY DAVID PAYNE	
- Direct (Harrison)	391
- Cross (Takeda)	393
- Cross (Heino)	408
PROCEEDINGS RECESSED	415

TABLE OF CONTENTS

	PAGE
PROCEEDINGS, WEDNESDAY, AUGUST 25, 2010 - VOL. 3	417
PRESENTATION ON BEHALF OF THE LOWER COLORADO RIVER AUTHORITY (CONTINUED)	417
KELLY DAVID PAYNE	
- Cross (Heino - Continued)	417
- Cross (Wilburn)	465
AFTERNOON SESSION	503
PRESENTATION ON BEHALF OF THE LOWER COLORADO RIVER AUTHORITY (CONTINUED)	503
KELLY DAVID PAYNE	
- Cross (Wilburn - Continued))	503
- Redirect (Harrison)	536
- Recross (Takeda)	544
- Recross (Heino)	545
- Recross (Wilburn)	547
JAMES DOUGLAS TRAVIS	
- Direct (Abazari)	553
- Cross (Siano)	566
PROCEEDINGS RECESSED	601

TABLE OF CONTENTS

	PAGE
PROCEEDINGS, THURSDAY, AUGUST 26, 2010 - VOL. 4	603
PRESENTATION ON BEHALF OF THE LOWER COLORADO RIVER AUTHORITY (CONTINUED)	603
JAMES TRAVIS	
- Cross (Siano - Continued)	603
- Cross (Heino)	617
AFTERNOON SESSION	686
PRESENTATION ON BEHALF OF THE LOWER COLORADO RIVER AUTHORITY (CONTINUED)	603
JAMES TRAVIS	
- Cross (Heino - Continued)	686
- Cross (Wilburn)	741
PROCEEDINGS RECESSED	787

1	TABLE OF CONTENTS	
2		PAGE
3	PROCEEDINGS, MONDAY, AUGUST 30, 2010 - VOL. 5	789
4	PRESENTATION ON BEHALF OF THE	
5	LOWER COLORADO RIVER AUTHORITY (CONTINUED)	796
6	JAMES TRAVIS	
7	- Cross (Wilburn - Continued)	796
8	- Redirect (Abazari)	856
9	- Recross (Heino)	869
10	- Recross (Wilburn)	872
11	STEPHEN WILLIAM KELICKER	
12	- Direct (Abazari)	875
13	- Cross (Siano)	878
14	AFTERNOON SESSION	899
15	PRESENTATION ON BEHALF OF THE	
16	LOWER COLORADO RIVER AUTHORITY (CONTINUED)	899
17	STEPHEN WILLIAM KELICKER	
18	- Cross (Mathews)	899
19	PROCEEDINGS RECESSED	1014
20		
21		
22		
23		
24		
25		

TABLE OF CONTENTS

	PAGE
PROCEEDINGS, TUESDAY, AUGUST 31, 2010 - VOL. 6	1016
PRESENTATION ON BEHALF OF THE LOWER COLORADO RIVER AUTHORITY (CONTINUED)	1044
STEPHEN WILLIAM KELICKER - Cross (Mathews - Continued)	1045
AFTERNOON SESSION	1113
PRESENTATION ON BEHALF OF THE LOWER COLORADO RIVER AUTHORITY (CONTINUED)	1113
STEPHEN KELICKER - Cross (Mathews - continued) - Cross (Wilburn)	1113 1159
PROCEEDINGS RECESSED	1209

TABLE OF CONTENTS

	PAGE
PROCEEDINGS, WEDNESDAY, SEPTEMBER 1, 2010 - VOL. 7	1211
PRESENTATION ON BEHALF OF THE LOWER COLORADO RIVER AUTHORITY (CONTINUED)	1213
STEPHEN WILLIAM KELLICKER	
- Cross (Wilburn - Continued)	1213
- Redirect (Abazari)	1257
- Recross (Siano)	1290
- Recross (Mathews)	1296
- Recross (Wilburn)	1310
- Further Redirect (Abazari)	1317
- Further Recross (Mathews)	1319
- Further Recross (Wilburn)	1319
AFTERNOON SESSION	1321
PRESENTATION ON BEHALF OF THE LOWER COLORADO RIVER AUTHORITY (CONTINUED)	1321
MICKEY FISHBECK	
- Direct (Harrison)	1321
- Cross (Takeda)	1323
- Cross (Mathews)	1350
- Cross (Wilburn)	1381
PROCEEDINGS RECESSED	1416

TABLE OF CONTENTS

	PAGE
PROCEEDINGS, THURSDAY, SEPTEMBER 2, 2010 - VOL. 8	1417
PRESENTATION ON BEHALF OF THE LOWER COLORADO RIVER AUTHORITY (CONTINUED)	1418
MICKEY FISHBECK (Continued)	1418
- Redirect (Harrison)	1421
- Recross (Mathews)	1423
- Recross (Wilburn)	
JACK ERNEST STOWE, JR.	1424
- Direct (Abazari)	1430
- Cross (Siano)	1473
- Cross (Heino)	
AFTERNOON SESSION	1510
PRESENTATION ON BEHALF OF THE LOWER COLORADO RIVER AUTHORITY (CONTINUED)	1514
JACK ERNEST STOWE, JR.	1514
- Cross (Wilburn)	1544
- Redirect (Abazari)	1553
- Recross (Siano)	1554
- Recross (Heino)	1558
- Recross (Wilburn)	1558
- Further Recross (Abazari)	
ANGELINA MARIE FLORES	1560
- Direct (Abazari)	1563
- Cross (Takeda)	1573
- Cross (Mathews)	
PROCEEDINGS RECESSED	1632

TABLE OF CONTENTS

	PAGE
PROCEEDINGS, FRIDAY, SEPTEMBER 3, 2010 - VOL. 9	1634
PRESENTATION ON BEHALF OF THE LOWER COLORADO RIVER AUTHORITY (CONTINUED)	1635
ANGELINA MARIE FLORES	
- Cross (Mathews)	1635
- Cross (Wilburn)	1669
- Redirect (Abazari)	1715
- Recross (Takeda)	1726
- Recross (Mathews)	1727
- Recross (Wilburn)	1740
- Further Redirect (Abazari)	1744
- Further Recross (Takeda)	1745
- Further Recross (Mathews)	1746
- Further Recross (Wilburn)	1747
AFTERNOON SESSION	1750
PRESENTATION ON BEHALF OF THE LOWER COLORADO RIVER AUTHORITY (CONTINUED)	1750
JULIE ROGERS	
- Direct (Harrison)	1750
- Cross (Mathews)	1764
- Cross (Wilburn)	1771
PRESENTATION ON BEHALF OF WEST TRAVIS COUNTY MUD NOS. 3 AND 5	1775
DON RAUSCHUBER	
- Direct (Gilbert)	1775
PROCEEDINGS RECESSED	1794

1	TABLE OF CONTENTS	
2		PAGE
3	PROCEEDINGS, TUESDAY, SEPTEMBER 7, 2010 - VOL. 10	1796
4	PRESENTATION ON BEHALF OF	
5	CITY OF BEE CAVE	1797
6	NELISA HEDDIN	
7	- Direct (Heino)	1797
8	- Cross (Wilburn)	1811
9	- Cross (Siano)	1824
10	- Cross (Harrison)	1847
11	AFTERNOON SESSION	1900
12	PRESENTATION ON BEHALF OF	
13	CITY OF BEE CAVE (CONTINUED)	1900
14	NELISA HEDDIN	
15	- Cross (Harrison - continued)	1900
16	- Cross (Heino)	1902
17	- Cross (Siano)	1916
18	- Cross (Wilburn)	1920
19	- Recross (Heino)	1924
20	- Recross (Wilburn)	1926
21	PRESENTATION ON BEHALF OF WEST TRAVIS	
22	COUNTY MUD NOS. 3 AND 5 (CONTINUED)	1928
23	DON RAUSCHUBER	
24	- Cross (Mathews)	1928
25	- Cross (Siano)	1956
	- Cross (Abazari)	1977
	PROCEEDINGS RECESSED	2047

1	TABLE OF CONTENTS	
2		PAGE
3	PROCEEDINGS, WEDNESDAY, SEPTEMBER 8, 2010 - VOL. 11	2049
4	PRESENTATION ON BEHALF OF WEST TRAVIS COUNTY MUD NOS. 3 AND 5 (CONTINUED)	2049
5	DON RAUSCHUBER	
6	- Cross (Abazari - Continued)	2049
7	- Redirect (Gilbert)	2141
8	- Recross (Mathews)	2176
9	- Recross (Siano)	2177
10	- Recross (Abazari)	2179
11	- Further Redirect (Gilbert)	2196
12	- Further Recross (Mathews)	2199
13	AFTERNOON SESSION	2202
14	PRESENTATION ON BEHALF OF THE EXECUTIVE DIRECTOR	2202
15	DEBI LOOCKERMAN	
16	- Direct (Mr. Siano)	2202
17	- Cross (Mathews)	2207
18	- Cross (Wilburn)	2257
19	- Redirect (Siano)	2299
20	- Recross (Abazari)	2317
21	- Recross (Mathews)	2323
22	- Recross (Wilburn)	2339
23	- Further Redirect (Siano)	2348
24	- Further Recross (Mathews)	2351
25	HEIDI GRAHM	
	- Direct (Siano)	2354
	- Cross (Mathews)	2356
	- Cross (Wilburn)	2371
	- Redirect (Siano)	2379
	- Recross (Mathews)	2382
	- Further Redirect (Siano)	2384
	- Further Recross (Mathews)	2384
	PROCEEDINGS CONCLUDED	2386
	REPORTERS' CERTIFICATE	2387

EXHIBIT INDEX

ED - EXECUTIVE DIRECTOR

MARKED ADMITTED

1. Direct Testimony of
Debi Loockerman

2202

2206

2. Direct Testimoy of
Heidi Graham

2353

2356

EXHIBIT INDEX

1	LCRA	MARKED ADMITTED	
2	1.	Direct Prefiled Testimony of Suzanne Zarling (including Attachments SZ-1 through SZ-14)	32 34
3	2.	Direct Prefiled Testimony of Kelly Payne (including Attachments KP-1 through KP-4)	82 393
4	3.	Direct Prefiled Testimony of James Travis (including Attachments JT-1 through JT-22)	82 566
5	4.	Direct Prefiled Testimony of Stephen Kellicker (including Attachments SK-1 through SK-32)	82 878
6	5.	Direct Prefiled Testimony of Mickey Fishbeck (including Attachments MF-1 through MF-20, MF-20A, MF-20B and MF-21)	82 1323
7	6.	Direct Prefiled Testimony of Angie Flores (including Attachments AF-1, AF-2, AF-2A through AF-2P)	82 1562
8	7.	Direct Prefiled Testimony of Jack Stowe (including Attachments JS-1 through JS-16)	82 1429
9	8.	Direct Prefiled Testimony of James Rader (including Attachment JR-1)	82
10	9.	Rebuttal Testimony of Angie Flores	1562 1562

EXHIBIT INDEX

2	LCRA	MARKED ADMITTED	
3	10.	Rebuttal Testimony of James W. Travis (including Attachments JT-23(R) through JT-27(R)	565 566
5	11.	Rebuttal Testimony of Stephen William Kellicker	878 878
7	12.	Rebuttal Testimony of Jack E. Stowe, Jr. (including Attachments JS-17(R) through JS-27(R)	1429 1429
9	13.	Affidavit of Ms. Rogers along with Pages 85 through 90 of LCRA 20320A	1043 1764
11	14.	BWG Audit Report	1268 1268
12	15.	LCRA Board Agenda - 08/07	1281 1281
13	16.	LCRA Water and Wastewater Services Audit Final Report	1759 1760
14	17.	Email chain	1759 1760
16	18.	Rate Tariff Change Application for Investor-Owned Utility	1999
17	19.	Direct Testimony and Exhibits of Donald G. Rauschuber on behalf of Chisholm Trail Special Utility District	2011 2026
20	20.	Excerpts from the American Waterworks Association Manual M1 Principles of Water Rates, Fees, and Charges	2026 2040

1
2
3
4
5
6
7
8
9
10
11
12
13
14
15
16
17
18
19
20
21
22
23
24
25

EXHIBIT INDEX

LCRA

MARKED ADMITTED

21.	Prefiled Testimony of Donald G. Rauschuber in Deer Creek case, SOAH Docket No. 582-09-5328, TCEQ Docket No. 2009-0929-UCR	2070	2091
22.	Proposal for Decision in Deer Creek case, SOAH Docket No. 582-09-5328, TCEQ Docket No. 2009-0929-UCR	2070	2091
23.	LCRA's Response to West Travis County MUD Nos. 3 and 5's Motion to Compel and Motion to Abate	2105	

EXHIBIT INDEX

BC (CITY OF BEE CAVE)	MARKED	ADMITTED
1. Direct Testimony of Nelisa D. Heddin	1797	1806
2. Professional Resume	1797	1806
2A. List of Acronyms used in Direct Testimony of Nelisa Heddin	1797	1806
3. Comparison of FY 06 Actual Expenditures to FY 07 Budget	1797	1806
4. Fluctuations of LCRA Business Plan WWUS Debt Service	1797	1806
5. OBM Circular A-87	1797	1806
6. Summary Cost Allocation Processes Utilized by LCRA	1797	1806
7. Summary of Distribution Base Data	1797	1806
8. FY 2007 Volume and Labor True-Up	1797	1806
9. Actual FY 2007 Direct v. Indirect/Shared Labor (WTC Water System)	1797	1806
10. Actual FY 2007 Direct v. Indirect/Shared Labor (WWUS)	1797	1806
11. Debt Service Par Value	1797	1806
12. Debt Service Par Value	1797	1806
13. Impact Fees Received and Spent	1797	1806
14. Capital Contributions	1797	1806
15. Determination of Revised Debt Service	1797	1806

EXHIBIT INDEX

BC (CITY OF BEE CAVE)		MARKED ADMITTED	
16.	LCRA Cost Center Functions and Costs Allocated to WTC Water System	1797	1806
17.	Management/Supervisor Salaries as Percentage of Total	1797	1806
18.	Determination of Management/ Supervisor Salaries	1797	1806
19.	Determination of Legal Salaries	1797	1806
20.	Determination of Engineering Salaries	1797	1806
21.	Comparative Benchmarking Analysis - FTE Ratios	1797	1806
22.	Comparative Benchmarking Analysis - Average Salary per Employee	1797	1806
23.	Comparative Benchmarking Analysis - Corporate Overhead	1797	1806
24.	Rate Analysis Salaries	1797	1806
25.	Rate Analysis Expenditures	1797	1806
26.	Legal Services Expenditures	1797	1806
27.	Damages from Operations Expenditures	1797	1806
28.	Employee Service Awards and Deferred Compensation Expenditures	1797	1806
29.	Software and Equipment Expenditures	1797	1806

EXHIBIT INDEX

2	BC (CITY OF BEE CAVE)	MARKED	ADMITTED
3	30. Community Development Expenditures	1797	1806
4	31. Practicing Perfection Expenditures	1797	1806
5	32. Real Estate Expenditures	1797	1806
6	33. Strategic Planning Expenditures	1797	1806
7	34. Other Interest Expenditures	1797	1806
8	35. Other Miscellaneous Expenditures	1797	1806
9	35B. Other Interest Expense Expenditures	1797	1806
10	36. Direct v. Indirect/Shared O&M (WTC Water System)	1797	1806
11	37. Times Coverage Discussion from Pflugerville Official Statement	1797	1806
12	38. Revised Times Coverage Calculation	1797	1806
13	39. Recommended Salary Adjustments - WTC Water	1797	1806
14	40. Recommended Salary Adjustments - WTC Region	1797	1806
15	41. Recommended Salary Adjustments - WTC Operating Center	1797	1806
16	42. Recommended Salary Adjustments - Retail Services	1797	1806
17	43. Recommended Salary Adjustments - WWUS	1797	1806

EXHIBIT INDEX

1				
2	BC (CITY OF BEE CAVE)		MARKED	ADMITTED
3	44.	Recommended Salary Adjustments		
4		- New Business Development	1797	1806
5	45.	Adjusted Labor - WTC Water	1797	1806
6	46.	Adjusted Labor - WTC Region	1797	1806
7	47.	Adjusted Labor - WTC Operating Center	1797	1806
8	48.	Adjusted Labor - Retail Services	1797	1806
9	49.	Adjusted Labor - WWUS	1797	1806
10	50.	Adjusted Labor - New Business Development	1797	1806
11	51.	Labor Adjustments - WSBU	1797	1806
12	52.	Benefits Adjustment	1797	1806
13	53.	Adjusted Cost Center Expenses - WTC Water	1797	1806
14	54.	Adjusted Cost Center Expenses - WTC Region	1797	1806
15	55.	Adjusted Cost Center Expenses - WTC Operating Center	1797	1806
16	56.	Adjusted Cost Center Expenses - WTC Retail Services	1797	1806
17	57.	Adjusted Cost Center Expenses - WTC WWUS	1797	1806
18	58.	Adjusted Cost Center Expenses - New Business Development	1797	1806
19				
20				
21				
22				
23				
24				
25				

EXHIBIT INDEX

	BC (CITY OF BEE CAVE)	MARKED ADMITTED	
3	59. Adjusted Cost Center Expenses - WSBU	1797	1806
5	60. Determination of Cost Allocation Factors	1797	1806
6	61. Allocation of Adjusted Costs to WTC Water	1797	1806
8	62. Allocation of G&A (CSBU) to WTC Water	1797	1806
9	63. Allocation of WSBU to WTC Water	1797	1806
10	64. Summary of Adjusted O&M Expenses Allocated to WTC Water	1797	1806
12	65. Costs to be Capitalized	1797	1806
13	66. Costs to be Amortized	1797	1806
14	67. Determination of Revised Revenue Requirements	1797	1806
15	68. Determination of Revised FTEs and Salaries	1797	1806
16	69. Comparative Benchmarking Analysis - FTE Ratios (Using Recommended Labor Adjustments)	1797	1806
17	70. Comparative Benchmarking Analysis - Average Salary (Using Recommended Labor Adjustments)	1797	1806
18	71. LCRA Direct Expenses document	111	139
23	72. LCRA Hill Country Regional Cost of Service Study	140	181

1	EXHIBIT INDEX			
2	BC (CITY OF BEE CAVE)		MARKED	ADMITTED
3	73.	LCRA General Ledger Excerpt	211	215
4	74.	Management Audit, 6-16-06	638	639
5	75.	WTC Water System FY 2008 Budget	643	645
6	76.	LCRA Board Resolution FY 2007 Business Plan	648	650
7	77.	FY 2007 Business Plan	671	679
8	78.	Monthly Reimbursement Letter	721	722
9	79.	Document entitled "West Travis County Water, Cost of Service Study Debt Service Assumptions"	728	730
10	80.	Cost Allocation Worksheets	983	1001
11	81.	Emails between Mickey Fishbeck and John Paul Sanchez (Bates Nos. LCRA 001839 and LCRA001840)	1113	1113
12	82.	Cost of Service Study for the Liberty Hill Regional Wastewater System 6/1/06	1142	1161
13	83.	FY '07 allocation true-up	1157	1161
14	84.	Model developed by Ms. Fishbeck identifying allocation factors input into the model	1352	1354
15	85.	May 2007 Camp Swift Wastewater Cost of Service and Rate Study prepared by Mickey Fishbeck	1375	1378
16				
17				
18				
19				
20				
21				
22				
23				
24				
25				

EXHIBIT INDEX

BC (CITY OF BEE CAVE)

MARKED ADMITTED

86.	3/29/06 email to Mickey Fishbeck from Angie Flores, with attachments (Bates Nos. LCRA001621 through 001628)	1649	1659
87.	Bee Cave's Errata to the Direct Testimony of Nelisa Heddin	1797	1806
88.	Prefiled Testimony of Tammy Lee Holguin-Benter in Chisholm Trail's Application 34637-A	2209	2214

EXHIBIT INDEX

2	WTC (WEST TRAVIS COUNTY)	MARKED	ADMITTED
3	1. Direct Testimony of		
4	Donald G. Rauschuber	217	
5	2. Customer Service Area Map		
6	for 2007	230	231
7	3. Excerpt from Angie Flores'		
8	Testimony	237	238
9	4. Business Record of LCRA Showing		
10	WTC's Wastewater Costs	243	244
11	5. Business Plan Excerpt from		
12	the BWG Report	253	255
13	6. Business Plan Excerpt from		
14	the BWG Report	258	
15	7. Graph - FY '03 to FY '07		
16	LCRA 24820	258	
17	8. WTC Projected Annual Revenue		
18	Requirements from LCRA	260	
19	9. Proposed Scope of Professional		
20	Services	267	268
21	10. Table 3 Water Revenue Reports		
22	LCRA WTC System	269	271
23	11. WTC Budget to Actual Reports		
24	SK-3	271	272
25	12. Service Area Map	296	
	13. TCEQ Utility Count Report	300	303
	14. Chapter 8503.001	306	315
	15. Board Agenda	312	314
	16. LCRA Water & Wastewater Services		
	Audit Final Report	314	315

EXHIBIT INDEX

	WTC (WEST TRAVIS COUNTY)	MARKED	ADMITTED
17.	Hill Country Regional Cost of Service Study	315	NOT OFFERED
18.	LCRA Water & Wastewater Services Audit Final Report	324	325
19.	Section 26.081 through 26.086	334	352
20.	LCRA Water & Wastewater Services Audit Final Report Executive Summary	343	350
21.	Unidentified pages from BWG Audit	352	362
22.	LCRA Water & Wastewater Services Audit Final Report	353	362
23.	1080 Pressure Plane	355	362
24.	Document regarding Sawyer Ranch Subdivision	362	363
25.	Document regarding Madrone Ranch Subdivision	366	367
26.	Developer Reimbursement Agreement	369	369
27.	Lease Agreement with Belvedere MUD	371	376
28.	Texas Water Development Board Regional Water Supply and Wastewater Facilities Planning Program	469	471
29.	Monthly Reports	504	505
30.	Subchapter F of Chapter 291 of the TCEQ Rules	514	515

EXHIBIT INDEX

WTC (WEST TRAVIS COUNTY)		MARKED ADMITTED	
31.	Independent Auditor's Report	748	749 (not admitted) 789
	(Reoffered Page 789)		
32.	Independent Auditor's Report	750	751 (not admitted) 780
	(Reoffered Page 789)		
33.	Closing Memorandum	751	752 (not admitted) 789
	(Reoffered Page 789)		
34.	Cover of official statements for Lower Colorado River Authority, refunding revenue bonds	752	753
35.	Special District Local Laws Code, Title 6. Water and Wastewater, Subtitle G. River Authorities, Chapter 8503. Lower Colorado River Authority	756	758
36.	Local Government Code, Chapter 395. Financing Capital Improvements Required by New Development in Municipalities, Counties, and Certain Other Local Governments	762	763
37.	Jackson Walker Invoice	784	784
38.	Board agenda index from LCRA October 17th, 2007	797	799
39.	MUD 3 Bonds	799	800

EXHIBIT INDEX

WTC (WEST TRAVIS COUNTY)	MARKED ADMITTED	
40. Document re LCRA Committee Meeting dated 3/20/07, with Attachments	1163	1164
41. Action item from the August 2007 board agenda entitled "Adopt Report of the Water Utility Audit Subcommittee"	1167	1168
42. Document entitled "LCRA Overhead Costs Allocated to West Travis County - Water For FY07"	1189	1192
43. Document entitled "LCRA's Overhead Costs Allocated to West Travis County - Wastewater For FY07"	1197	1198
44. West Travis County Cost of Service Study Debt Service Assumptions	1212	1214
45. Lower Colorado River Authority Refunding Revenue Bonds, Series 2002	1224	1225
46. West Travis County Water System FY 07, Budget to Actual Comparison	1226	1229
47. Capital Investment Project Breakdown - WTC	1230	WITH DRAWN
48. West Travis County Wastewater System FY 07 Budget to Actual Comparison	1250	1251
49. 7/10/06 email from John Paul Sanchez to rimrock@earthlink.net (Bates No. CLRA010479)	1381	1382

EXHIBIT INDEX

	WTC (WEST TRAVIS COUNTY)	MARKED ADMITTED	
3	50. AWWA Manual	1537	1557
4	51. August 2005 HDR Engineering Document entitled "Water and Wastewater Utilities Rates Affordability Study and Assessment Model Development"		
5			
6		1675	1675
7	52. Document entitled "Wholesale Water Services Agreement Between Lower Colorado River Authority and Deer Creek Ranch Water Co., L.L.C."		
8			
9		1677	1679
10	53. Board Calculations by Angelina Flores on questions asked by Mr. Wilburn		
11		1715	1715
12	54. LCRA's Objections and Responses to WTC MUD Nos. 3 and 5's Interrogatories, Requests for Production and Request for Admission		
13			
14		1821	1821
15	55. Proposal For Decision in SOAH Docket No. 582-05-0003 (TCEQ Docket No. 2004-0979-UCR) Chisholm Trail case		
16			
17		2144	
18	56. American Water Works Association Document entitled "Principles of Water Rates, Fee, and Charges, AWWA Manual M1 Fifth Edition"		
19			
20		2160	2166
21	57. 7/10/08 Letter to Thomas G. Mason (LCRA) from Tammy Benter (TCEQ) (Bates Nos. LCRA025542 and LCRA025543)		
22			
23		2258	2261



JACKSON WALKER L.L.P.
ATTORNEYS & COUNSELLORS

Leonard H. Dougal
(512) 236-2233 (Direct Dial)
(512) 391-2112 (Direct Fax)
ldougal@jw.com

February 5, 2010

VIA HAND DELIVERY

Hon. Henry D. Card
Administrative Law Judge
State Office of Administrative Hearings
300 West 15th Street, Suite 502
Austin, Texas 78701

CHIEF CLERK'S OFFICE

FEB - 5 PM 3:37

TEXAS
COMMISSION
ON ENVIRONMENTAL
QUALITY

RE: **SOAH Docket No. 582-08-2863**; TCEQ Docket No. 2008-0093-UCR; Appeal of
the Retail Water and Wastewater Rates of the Lower Colorado River Authority

Dear Judge Card:

Enclosed please find two (2) sets of the Lower Colorado River Authority's Direct
Testimony and Exhibits to be filed in the above-referenced proceeding.

By this letter I certify that a true and correct copy of the documents filed today is hereby
served on all parties to this proceeding in the manner indicated below.

Thank you for your attention to this matter.

Sincerely,

Leonard H. Dougal

LHD:pjs

Enclosures

cc: Docket Clerk
State Office of Administrative Hearings
300 West 15th Street, Suite 502
Austin, Texas 78701

Via Hand Delivery
(transmittal letter only)

Christiaan Siano (MC-173)
Staff Attorney
Texas Commission on Environmental Quality
12100 Park 35 Circle, Building A
Austin, Texas 78753

Via Hand Delivery

Randall B. Wilburn
Wilburn Consulting LLC
7408 Rain Creek Parkway
Austin, Texas 78759

Via Hand Delivery

Jim Mathews
Mathews & Freeland, L.L.P.
327 Congress Avenue, Suite 300
Austin, Texas 78701

Via Hand Delivery

Eli Martinez (MC-103)
Public Interest Counsel
Texas Commission on Environmental Quality
12100 Park 35 Circle, Building F
Austin, Texas 78753

Via Hand Delivery

LaDonna Castañuela (MC-105)
Chief Clerk
Texas Commission on Environmental Quality
12100 Park 35 Circle, Building F
Austin, Texas 78753

Via Hand Delivery

SOAH DOCKET NO. 582-08-2863
TCEQ DOCKET NO. 2008-0093-UCR

2010 FEB -5 PM 3: 37

APPEAL OF THE RETAIL WATER
AND WASTEWATER RATES OF THE
LOWER COLORADO RIVER AUTHORITY

§
§
§

BEFORE THE STATE OFFICE
OF
ADMINISTRATIVE HEARINGS

LOWER COLORADO RIVER AUTHORITY'S EXHIBIT LIST - VOLUME I

LCRA's Exhibit No.	Document Description
1.	Direct Testimony of Suzanne Zarling
SZ-1	Resume of Suzanne Zarling
SZ-2	LCRA Organizational Chart
SZ-3	Chart of LCRA Water and Wastewater Utility Four Geographic Regions
SZ-4	The Feasibility of Regionalizing Water and Wastewater Utilities: A TCEQ Policy Statement (Jan. 2003, RG-357)
SZ-5	Comparison of Monthly Volume per Residential Connection of West Travis County Region (Bee Cave) to Hill Country Region
SZ-6	Executive Summary of R.W. Beck Report
SZ-7	West Travis County Water and Wastewater Cost of Service and Rate Study
SZ-8	Executive Summary of Barrington-Wellesley Group, Inc. Water Utility Audit (November 1, 2006)
SZ-9	LCRA Board Approval of Rate Increase, LCRA Board Agenda Item Recommending Approval of Rate Increase and Approved Rate Schedules
SZ-10	Board Approval of Amendment to Commitments of Stored Water for Municipal and Recreational Purposes (Mar. 22, 2006)
SZ-11	Board Approval of Motion to Amend LCRA Raw Water Rates (Sept. 2006)
SZ-12	Rate Case Expense Supporting Data
SZ-13	West Travis County Regional Water System Revenue Requirement Summary

LCRA's Exhibit No.	Document Description
SZ-14	West Travis County Regional Wastewater System Revenue Requirement Summary
2.	Direct Testimony of Kelly Payne
KP-1	Resume of Kelly Payne
KP-2	West Travis County Regional Water System Timeline
KP-3	Map of LCRA West Travis County Regional Water System
KP-4	West Travis County Regional Water System: Capital Improvements Plan and Impact Fee Calculation for Development Between 2006 and 2015

SOAH DOCKET NO. 582-08-2863
TCEQ DOCKET NO. 2008-0093-UCR

2010 FEB -5 PM 3:38

APPEAL OF THE RETAIL WATER § BEFORE THE STATE OFFICE
AND WASTEWATER RATES OF THE § CHIEF CLERK'S OFFICE
LOWER COLORADO RIVER AUTHORITY § OF
ADMINISTRATIVE HEARINGS

LOWER COLORADO RIVER AUTHORITY'S EXHIBIT LIST - VOLUME II

LCRA's Exhibit No.	Document Description
3.	Direct Testimony of James Travis
JT-1	Resume of James Travis
JT-2	NARUC Uniform System of Accounts for Class A Water Utilities
JT-3	LCRA Annual Report—Fiscal Year 2007 with Deloitte & Touche LLP Auditor's Report
JT-4	FY 2006 Actual Expenses for West Travis County Water System
JT-5	FY 2006 Actual Expenses for West Travis County Wastewater System
JT-6	LCRA FY 2007 Cost Allocation Manual
JT-7	LCRA Board Policy, 301—Financial Policy (Dec. 13, 2006)
JT-8	LCRA Board Policy, 304—Financial Planning Policy (Nov. 19, 2003 and May 16, 2007)
JT-9	LCRA Board Policy, 205—Procurement Policy (July 1, 2002 and June 5, 2007)
JT-10	FY 2007 Corporate Net Residual Corporate Expense Detail from FY 2007 Business Plan
JT-11	FY 2008 Corporate Net Residual Corporate Expense Detail from FY 2007 Business Plan
JT-12	FY 2009 Corporate Net Residual Corporate Expense Detail from FY 2007 Business Plan
JT-13	FY 2010 Corporate Net Residual Corporate Expense Detail from FY 2007 Business Plan

LCRA's Exhibit No.	Document Description
JT-14	Flow Chart of LCRA Enterprise-Wide Residual Corporate Costs to West Travis County Water and Wastewater Systems (A)
JT-15	West Travis County Regional Water System Existing Debt Service Summary
JT-16	West Travis County Regional Wastewater System Existing Debt Service Summary
JT-17	West Travis County Regional Water System Existing Debt Service by Series
JT-18	West Travis County Regional Wastewater System Existing Debt Service by Series
JT-19	West Travis County Common—Existing Debt Service by Series
JT-20	Asset List Representing Net Book Value of West Travis County Regional Water System Assets at the end of FY 2006
JT-21	Asset List Representing Net Book Value of West Travis County Regional Wastewater System Assets at the end of FY 2006
JT-22	Public Utility Commission Approval of LCRA Public Service Funding (Docket No. 28906)

SOAH DOCKET NO. 582-08-2863
TCEQ DOCKET NO. 2008-0093-UCR

2010 FEB -5 PM 3:38

APPEAL OF THE RETAIL WATER §
AND WASTEWATER RATES OF THE §
LOWER COLORADO RIVER AUTHORITY §

BEFORE THE STATE OFFICE
OF CHIEF CLERKS OFFICE
ADMINISTRATIVE HEARINGS

LOWER COLORADO RIVER AUTHORITY'S EXHIBIT LIST - VOLUME III

LCRA's Exhibit No.	Document Description
4.	Direct Testimony of Stephen Kellicker
SK-1	Resume of Stephen Kellicker
SK-2	FY 2007 Business Plan
SK-3	FY 2006 Budget to Actual Report
SK-4	FY 2007 Budget to Actual Report
SK-5	Omitted.
SK-6	Omitted.
SK-7	West Travis County Water System Operations and Maintenance Expenses for FY 2007 through FY 2010
SK-8	West Travis County Wastewater System Operations and Maintenance Expenses for FY 2007 through FY 2010
SK-9	FY 2007 West Travis County Cost of Service Study Shared and Indirect Expenses by Cost Pool
SK-10	FY 2008 West Travis County Cost of Service Study Shared and Indirect Expenses by Cost Pool
SK-11	FY 2009 West Travis County Cost of Service Study Shared and Indirect Expenses by Cost Pool
SK-12	FY 2010 West Travis County Cost of Service Study Shared and Indirect Expenses by Cost Pool

LCRA's Exhibit No.	Document Description
SK-13	FY 2007 Water Services New Business Development Cost Detail from FY 2007 Business Plan
SK-14	FY 2007 Water Services Internal Overhead Cost Detail from FY 2007 Business Plan
SK-15	FY 2007 Water & Wastewater Common Cost Detail from FY 2007 Business Plan
SK-16	FY 2007 Water & Wastewater Customer Service Cost Detail from FY 2007 Business Plan
SK-17	FY 2007 West Travis County Region Cost Detail from FY 2007 Business Plan
SK-18	FY 2007 West Travis County Operating Center Cost Detail from FY 2007 Business Plan
SK-19	Water Services' Common Cost Allocations FY 2007 Business Plan
SK-20	Water and Wastewater System Overhead Allocations
SK-21	Flow Chart of Water Services Business Unit Costs to West Travis County Water & Wastewater Systems (B)
SK-22	Flow Chart of Water and Wastewater Utility Operating Unit Costs to West Travis County Water and Wastewater Systems (C)
SK-23	Flow Chart of West Travis County Region Costs to West Travis County Water and Wastewater Systems (D)
SK-24	WTC Regional Water Capital Improvement Plan List from 2006 Impact Fee Study
SK-25	WTC Regional Water Capital Costs/Capital Financing for FY 2006 through FY 2010
SK-26	WTC Regional Wastewater Capital Costs/Capital Financing for FY 2007 through FY 2010
SK-27	WTC Regional Wastewater FY 2007 Business Capital Improvement Plan—Capital Expenditures
SK-28	Budgeted Financial Excess Capacity Calculation
SK-29	July 10, 2000 Letter to Lake Pointe Residents from West Travis County Municipal Utility District Nos. 3 & 5

LCRA's Exhibit No.	Document Description
SK-30	West Travis County Water & Wastewater System Example Bill for 10,000 Gallons
SK-31	West Travis County Water & Wastewater System Assessed Values Sample MUD Nos. 3 & 5
SK-32	West Travis County Water & Wastewater System Example Bill for 18,000 Gallons
5.	Direct Testimony of Mickey Fishbeck
MF-1	Resume of Mickey Fishbeck
MF-2	Omitted.
MF-3	Disaggregated vs. Combined Water Cost Allocations
MF-4	Water Gallons Billed and Number of Water Customers
MF-5	Wastewater Billings
MF-6	Wastewater Treated
MF-7	Number of Sewer Customers
MF-8	Water Meter Counts
MF-9	Water Beginning Balance
MF-10	Water Non-rate Revenues
MF-11	Water Direct Operations and Maintenance Expenses
MF-12	Water Shared and Indirect Expenses
MF-13	Water Debt Service
MF-14	Water Operations Reserve (LCRA Policy 301)
MF-15	Water Rate Revenues
MF-16	Sewer Non-rate Revenues
MF-17	Sewer Operating and Maintenance Expenses

LCRA's Exhibit No.	Document Description
MF-18	Sewer Debt Service
MF-19	Sewer Revenues
MF-20	Retail vs. Wholesale Water Debt Service Split
MF-20A	Capital for West Travis County Regional Systems
MF-20B	Capital Investment for West Travis County Regional Systems—Rimrock Consulting
MF-21	Corrected Table 14-W

SOAH DOCKET NO. 582-08-2863
TCEQ DOCKET NO. 2008-0093-UCR

2010 FEB -5 PM 3:30

APPEAL OF THE RETAIL WATER § BEFORE THE STATE OFFICE
AND WASTEWATER RATES OF THE § CHIEF CLERKS OFFICE
LOWER COLORADO RIVER AUTHORITY § ADMINISTRATIVE HEARINGS

LOWER COLORADO RIVER AUTHORITY'S EXHIBIT LIST – VOLUME IV

LCRA's Exhibit No.	Document Description
6.	Direct Testimony of Angie Flores
AF-1	Resume of Angie Flores
AF-2	Workpapers for Rate Structure and Methodology
AF-2A	W-1 Water Rate Summary
AF-2B	W-2 Water Base Rate Revenue Calculation
AF-2C	W-3 Water Volumetric Rate Revenue Calculation – Bee Cave District
AF-2D	W-4 Water Volumetric Rate Revenue Calculation – 290/HPR District
AF-2E	W-5 Water Volumetric Rate Revenue Calculation – Homestead/Meadowfox District
AF-2F	W-6 Water Volumetric Rate Revenue Calculation – Bee Cave South District
AF-2G	W-7 Water Volumetric Rate Revenue Calculation – Commercial – Small Meters
AF-2H	W-8 Water Volumetric Rate Revenue Calculation – Commercial – 1" Meters
AF-2I	W-9 Water Volumetric Rate Revenue Calculation – Commercial – 1 ½" Meters
AF-2J	W-10 Water Volumetric Rate Revenue Calculation – Commercial – 2" Meters
AF-2K	W-11 Water Volumetric Rate Revenue Calculation – Commercial – 3" Meters
AF-2L	W-12 Water Volumetric Rate Revenue Calculation – Commercial – 4" Meters
AF-2M	W-13 Water Volumetric Rate Revenue Calculation – Multi-Family

LCRA's Exhibit No.	Document Description
AF-2N	WW-1 Wastewater Rate Summary
AF-2O	WW-2 Wastewater Commercial Rate Design
AF-2P	WW-3 Wastewater Multi-Family Rate Summary
7.	Direct Testimony of Jack Stowe
JS-1	Testimony Resume
JS-2	Professional Resume
JS-3	Excerpts from Manual of Practice of Water Environment Federation
JS-4	Excerpts from Manual of Water Supply Practices of AWWA (M1)
JS-5	Order Denying Ratepayer's Appeal of the Retail Water Rate Increase of Chisholm Trail Special Utility District, SOAH Docket No. 582-05-0003; TCEQ Docket No. 2004-0979-UCR
JS-6	Excerpts from Section 8503.011 of LCRA Board of Directors Handbook
JS-7	Memorandum from Stephen Kellicker to Tammy Benter Concerning Audit
JS-8	FY 2007 Business Plan Allocation Operating Expenses
JS-9	Direct and Allocated Labor Costs for FY 2007
JS-10	Salary Information by Job from Payscale Insight
JS-11	Documentation in Support of LCRA A+ Bond Ratings
JS-12	Schedule JES-1—Summary Allocation to WTC Water and Wastewater Operations
JS-13	Schedule JES-2—Estimated Fully Loaded Costs per FTE
JS-14	Schedule JES-3—Estimated FTEs for Overhead and Support Services
JS-15	Schedule JES-4—Comparison of Hourly Labor Rates
JS-16	Schedule JES-5—FY 2007 Budgeted Benefits

LCRA's Exhibit No.	Document Description
8.	Direct Testimony of James Rader
JR-1	Resume of James Rader