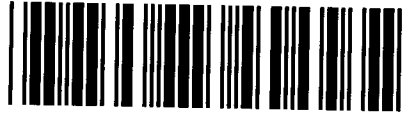




Control Number: 42963



Item Number: 9

Addendum StartPage: 0

*House Bill (HB) 1600 and Senate Bill (SB) 567 83rd
Legislature, Regular Session, transferred the functions
relating to the economic regulation of water and sewer
utilities from the TCEQ to the PUC effective
September 1, 2014.*

To: Administrative Reviewer

Date: February 27, 2002

From: Cartographer-Utilities & Districts Section

Subject: Overlap & Notice Check for Administrative Review No. A-239-1
City of Lyford to obtain water and sewer CCN in Willacy County

RECEIVED

2014 NOV 20 PM 2: 20

PUBLIC UTILITY COMMISSION
CLERK

1. No new overlap of service areas exists.
- X 2. An overlap partial with North Alamo WSC (10553) and Sunny Dew WSC (11041)
as stated in the application
3. Dual certification
4. An overlap exists with the city limits of:
5. If this is a Sale, Transfer, or Merger, is additional area being requested?
6. Due to ☐ an inadequate map ☐ no map filed by the applicant, a determination cannot be made as to the actual location of requested service boundary.
7. Map submitted is in a digital version. Attach insert to request electronic copy with response letter.
8. Need a more detailed map, such as a subdivision plat or USGS topo map with the boundary clearly identified.
9. Utility notice was sufficient.
10. Utility notice was insufficient. In addition to those systems listed in the application, they will also need to notify:

TWO MILES: Request for service
North Alamo WSC (10553)
Sunny Dew WSC (11041)
City of Raymondville (10542 & 20215)

FIVE MILES: includes listed above
North Alamo WSC (10553 & 20645)
Sunny Dew WSC (11041)
City of Raymondville (10542 & 20215)
Sebastian MUD (11462 & 20790)

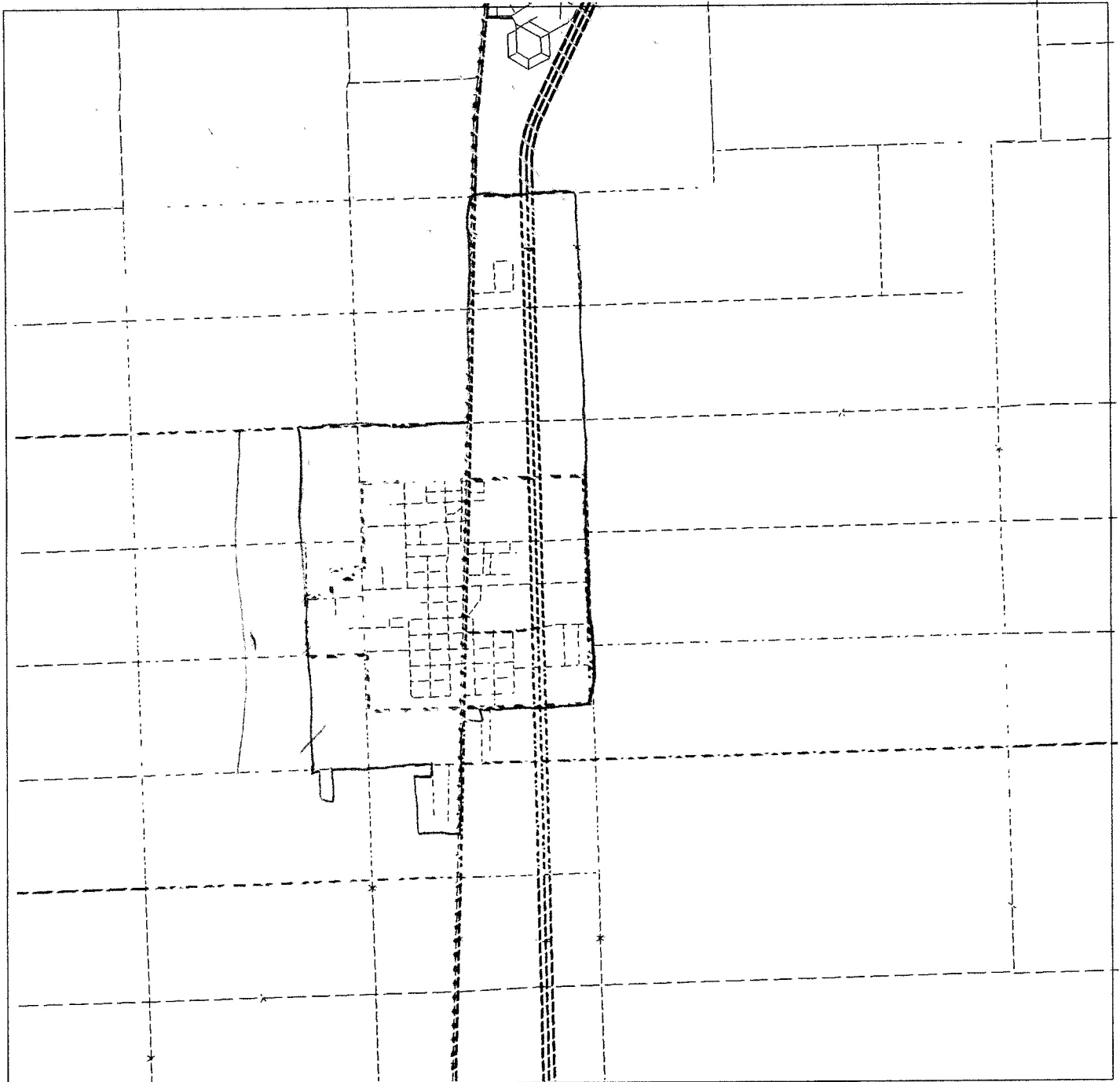
11. Notice: On the North by a line 8/10 of a mile South of FM 490
On the East by CR 315
On the South by FM 491
On the West by FM 1834

12. Other comments: Small scale location map shows greater area than detailed map. We use the detailed map. City of Lyford will need to clarify the South boundary and possibly submit a new detailed map..



Kent Steelman

OVERLAPS CITY OF LYFORD PROPOSED A-239-1



TNRCC

CITY OF LYFORD PROPOSED

NORTH ALAMO WSC
SUNNY DEW WSC

0.4 0 0.4 0.8 1.2 Miles

