



Control Number: 42958



Item Number: 14

Addendum StartPage: 0

RECEIVED

APPLICATION OF AQUA UTILITIES, §
 INC. AND AQUA TEXAS, INC. FOR §
 SALE, TRANSFER, OR MERGER OF §
 FACILITIES AND TO AMEND §
 CERTIFICATES OF CONVENIENCE §
 AND NECESSITY IN CHAMBERS, §
 JEFFERSON AND LIBERTY §
 COUNTIES (GRAY UTILITY §
 SERVICE WATER SYSTEM; 37943-S) §

PUBLIC UTILITY COMMISSION

2015 APR -7 PM 1:50
 PUBLIC UTILITY COMMISSION
 OF TEXAS FILING CLERK

AQUA TEXAS' RESPONSE TO ORDER NO. 6

TO THE HONORABLE ADMINISTRATIVE LAW JUDGE:

COME NOW, Aqua Utilities, Inc. and Aqua Texas, Inc. d/b/a Aqua Texas ("Aqua Texas" or "Applicants") and file this Response to Order No. 6 ("Response"). In support thereof, Aqua Texas would show the following.

I. BACKGROUND

On June 4, 2014, Aqua Texas filed a Sale, Transfer, or Merger ("STM") application with the Texas Commission on Environmental Quality ("TCEQ") to transfer certain certificated water service areas and assets from Aqua Utilities, Inc. to Aqua Texas, Inc. as part of a reorganization effort. Since 2010, through a series of STM applications, Aqua Texas has undertaken a process to consolidate all Texas regulated utility assets owned by Aqua America, Inc. subsidiaries under a single subsidiary: Aqua Texas, Inc. d/b/a Aqua Texas. This process is expected to provide greater clarity and efficiency for the Commission, TCEQ, and Aqua Texas from a regulatory and operational standpoint. Thus far, this process is complete for most of Aqua Texas' North Region and most of its Southeast Region systems. The STM application pending in this docket involves several water systems acquired from Gray Utility Service, L.L.C. through a previous STM application approved by TCEQ. *See* TCEQ Final Order, TCEQ Application No. 36695-S (November 2, 2011). Aqua Texas refers to these systems as its Southeast Region-Gray ("SE Gray") water systems.

On January 30, 2015, the Applicants filed revised application maps in response to Order No. 4. On March 30, 2015, Commission Staff filed a recommendation identifying certain deficiencies in those maps. In Order No. 6, Applicants were directed to cure those deficiencies by April 7, 2015.

14

Aqua Texas conferred with the Commission Staff about map issues on March 31, 2015 and again on April 7, 2015. Applicants hereby files this response in accordance with those discussions.

II. SUPPLEMENTAL APPLICATION INFORMATION PROVIDED

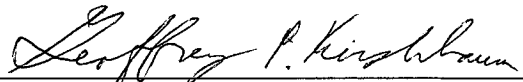
After communications with Commission Staff, Aqua Texas created the maps attached as **Exhibit A**. Those maps include both large and small scale maps of the areas being transferred extracted from the Commission's official maps found within its CCN Viewer. Certain labeling was added for clarity as directed by Commission Staff.

III. CONCLUSION

Aqua Texas respectfully requests, upon confirmation by Commission Staff, that the ALJ issue an order finding the application administratively complete and directing Commission Staff to continue application processing. If for any reason Commission Staff does not view the attachments as sufficient for application acceptance, Aqua Texas respectfully requests that it be notified immediately and provided an opportunity to cure any remaining deficiencies that are identified.

Respectfully submitted,

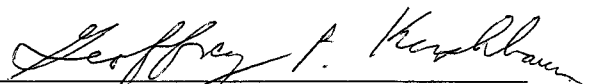
THE TERRILL FIRM, P.C.

By: 
Paul M. Terrill III
State Bar No. 00785094
Geoffrey P. Kirshbaum
State Bar No. 24029665
810 West 10th Street
Austin, Texas 78701
Tel: (512) 474-9100
Fax: (512) 474-9888

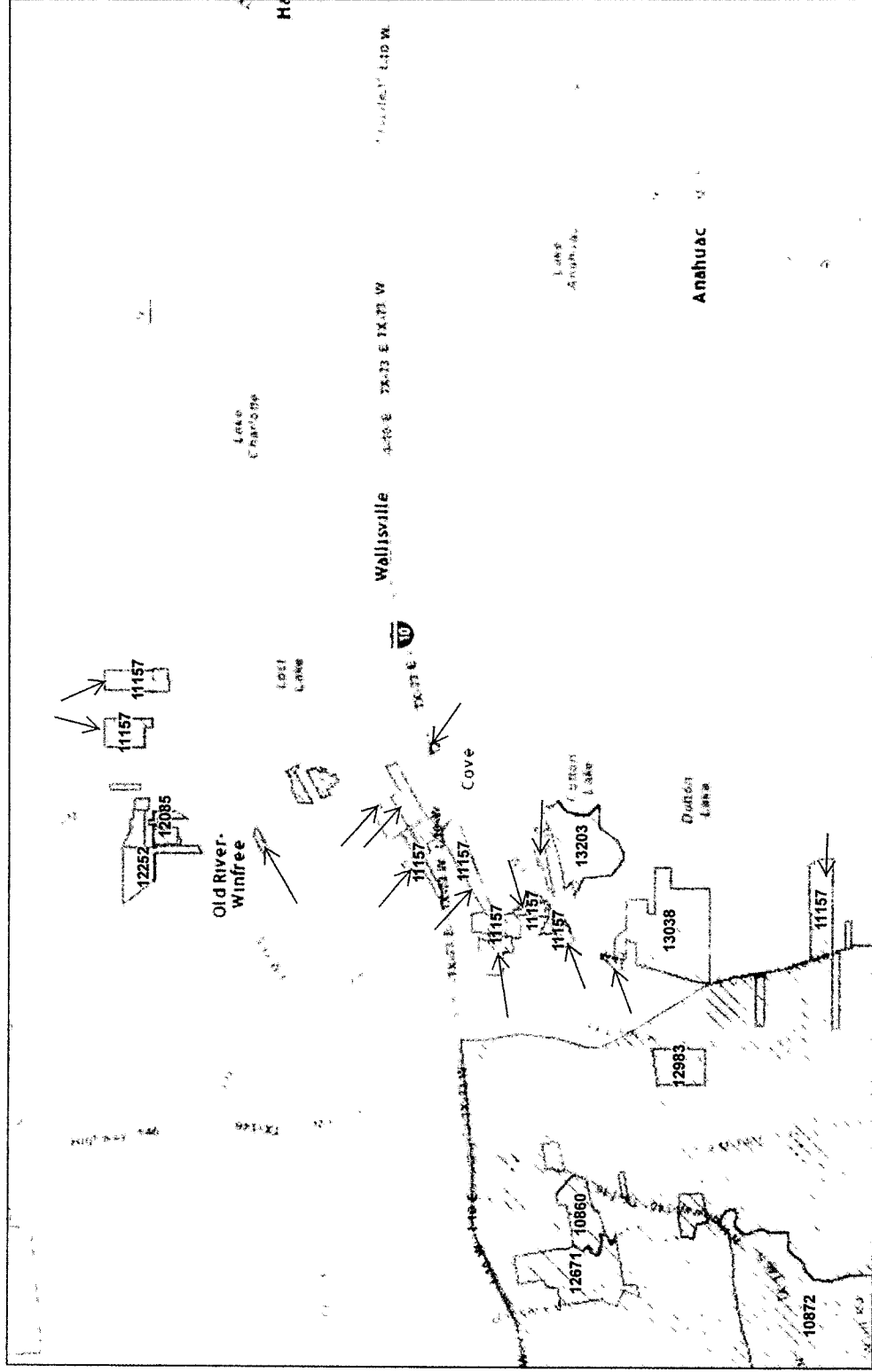
**ATTORNEYS FOR AQUA UTILITIES, INC.
AND AQUA TEXAS, INC. D/B/A AQUA TEXAS**

CERTIFICATE OF SERVICE

I certify that a copy of this document will be served on all parties of record on April 7, 2015 in accordance with P.U.C. Procedural Rule 22.74.


Geoffrey P. Kirshbaum

PUC Docket No. 42958 Water and Sewer CCN Viewer



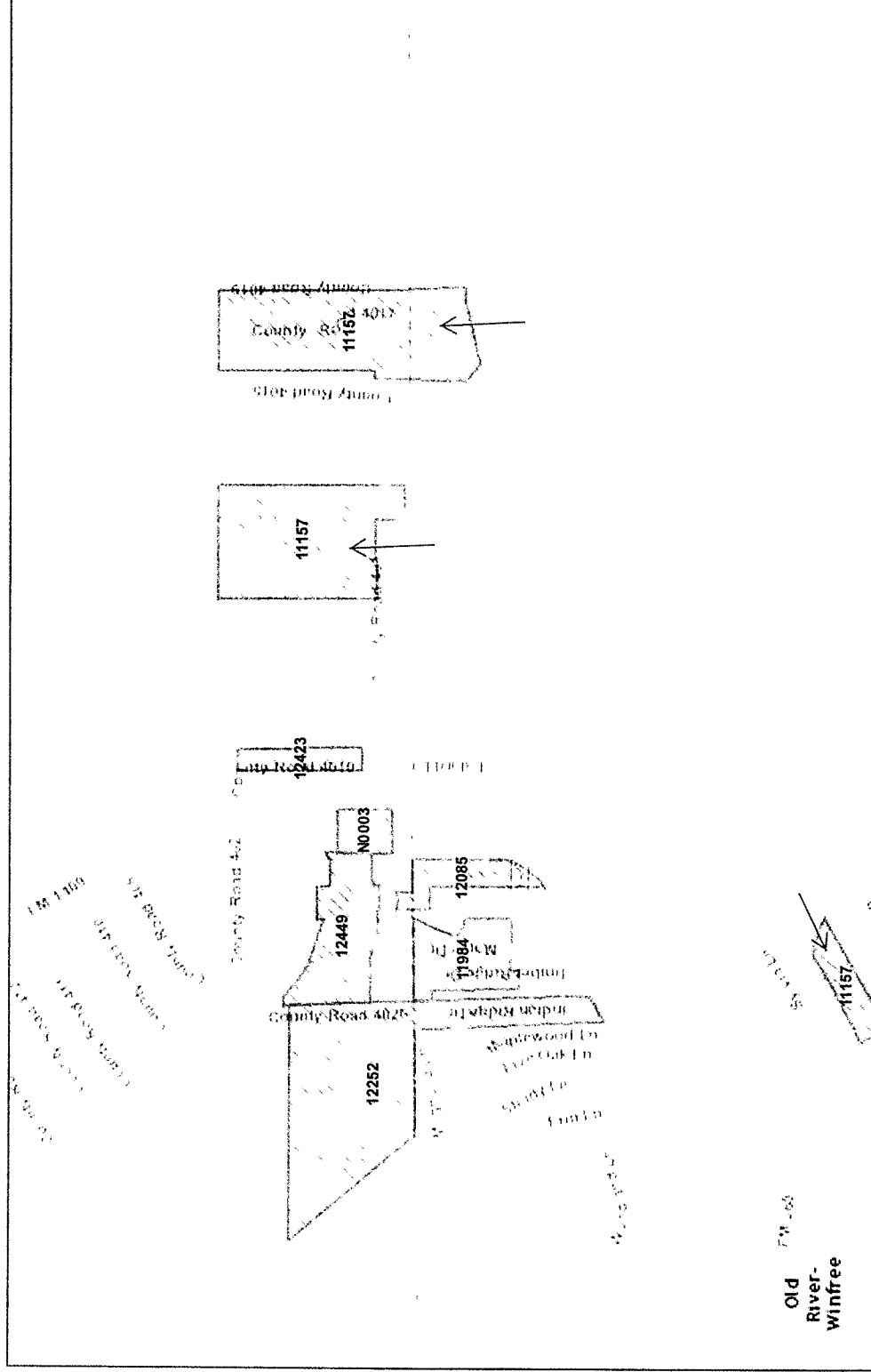
April 1, 2015 → All areas marked to be transferred to Aqua Texas, Inc.

Water CCN Service Areas

Proposed Water Service Area in Liberty and Chambers Counties -
Transfer from 11157 to 13203

Sources: Esri, HERE, DeLorme, USGS, Intermap, increment P Corp.,
NRCAN, Esri Japan, METI, Esri China (Hong Kong), Esri (Thailand).

PUC Docket No. 42958 Water and Sewer CCN Viewer



April 7, 2015 → All areas marked to be transferred to Aqua Texas, Inc.

Water CCN Service Areas

Old River-Winfree

1:36,112

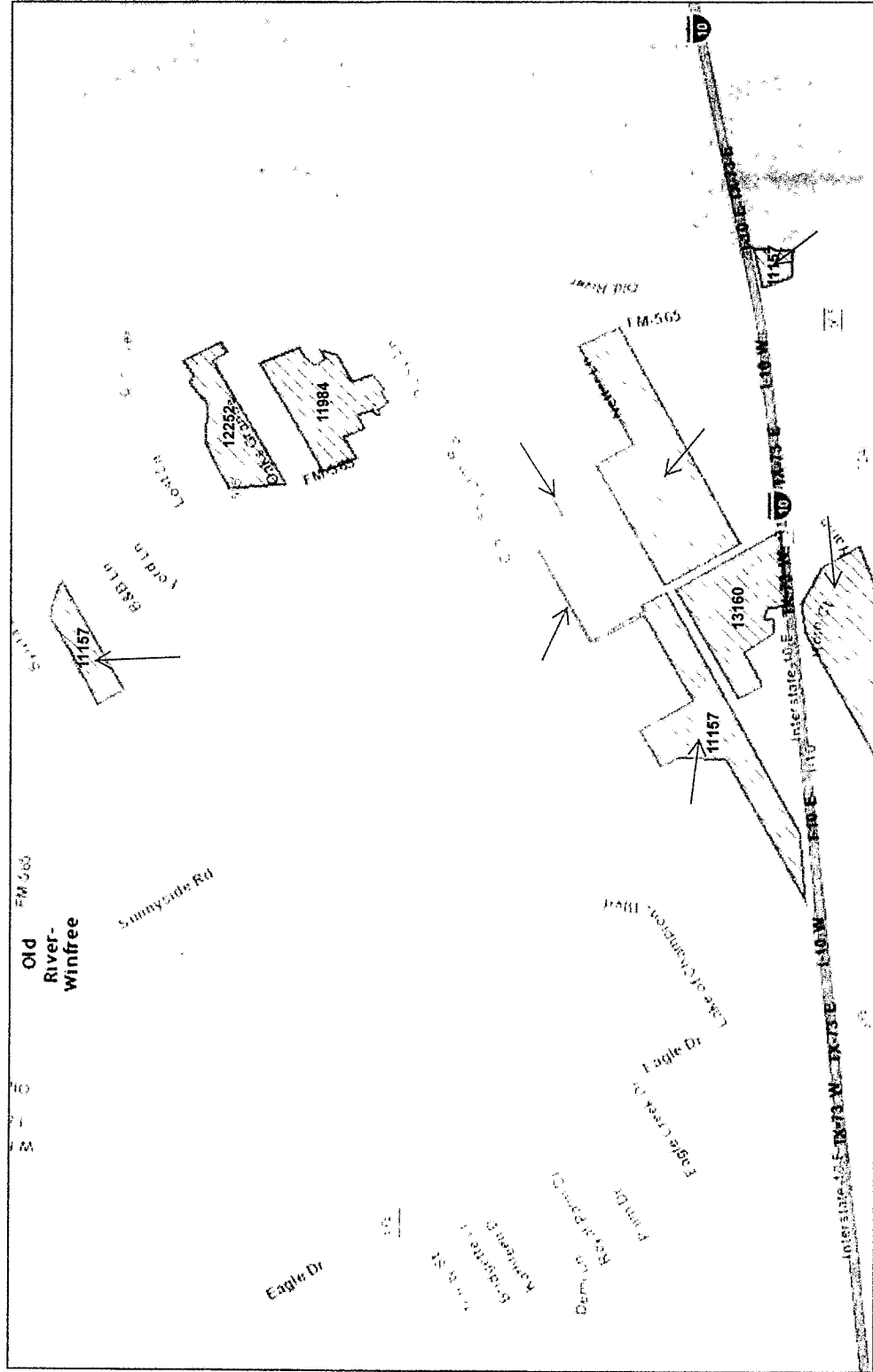
0 0.3 0.6 1 1.2 mi

0 0.5 1 2 km

Sources: Esri, HERE, DeLorme, USGS, Intermap, increment P Corp., NRCAN, Esri Japan, METI, Esri China (Hong Kong), Esri (Thailand).

Proposed Water Service Area in Liberty and Chambers Counties - Transfer from 11157 to 13203

PUC Docket No. 42958 Water and Sewer CCN Viewer



April 7, 2015

→ All areas marked to be transferred to Aqua Texas, Inc.

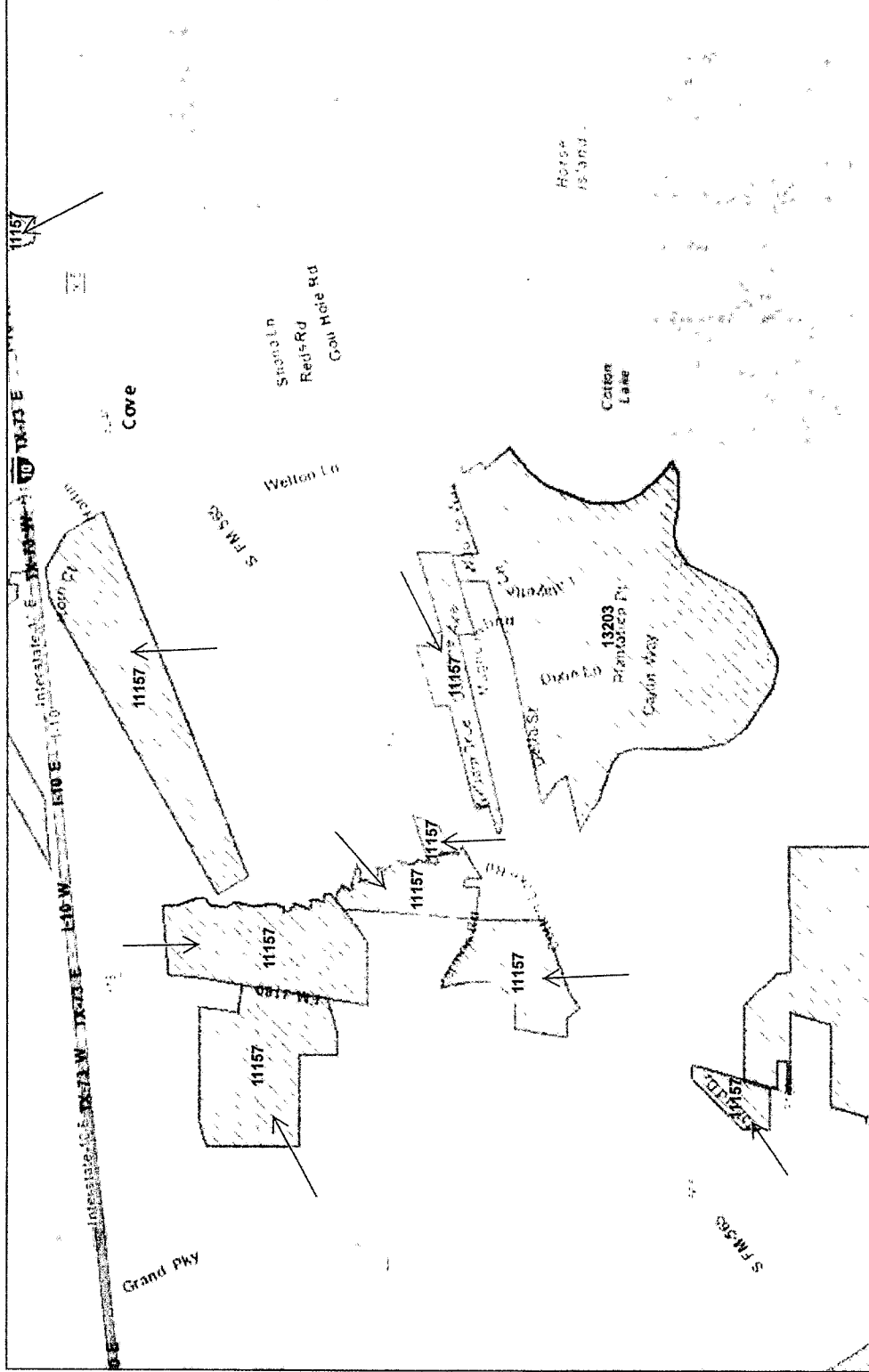
Water CCN Service Areas

1:36,112
0 0.3 0.6 1 1.2 mi
0 0.5 1 2 km

Proposed Water Service Area in Liberty and Chambers Counties -
Transfer from 11157 to 13203

Sources: Esri, HERE, DeLorme, USGS, Intermap, Incorp. P Corp.,
NRCAN, Esri Japan, METI, Esri China (Hong Kong), Esri (Thailand).

PUC Docket No. 42958 Water and Sewer CCN Viewer



April 7, 2015

Water CCN Service Areas

→ All areas marked to be transferred to Aqua Texas, Inc.

Proposed Water Service Area in Liberty and Chambers Counties -
Transfer from 11157 to 13203

Sources: Esri, HERE, DeLorme, USGS, Intermap, Incorp. P. Corp.,
NRCAN, Esri Japan, METI, Esri China (Hong Kong), Esri (Thailand).

[illegible]

Area marked to be transferred to Aqua Texas, Inc.

Water CCN Service Areas

Proposed Water Service Area in Liberty and Chambers
Counties - Transfer from CCN 11157 to 13203

Sources. Esri, HERE, DeLorme, USGS, Intermap, increment P Corp., NRCAN, Esri Japan, METI, Esri China (Hong Kong), Swis (Thailand),