

Public Utility Commission of Texas

Texas Technical Reference Manual

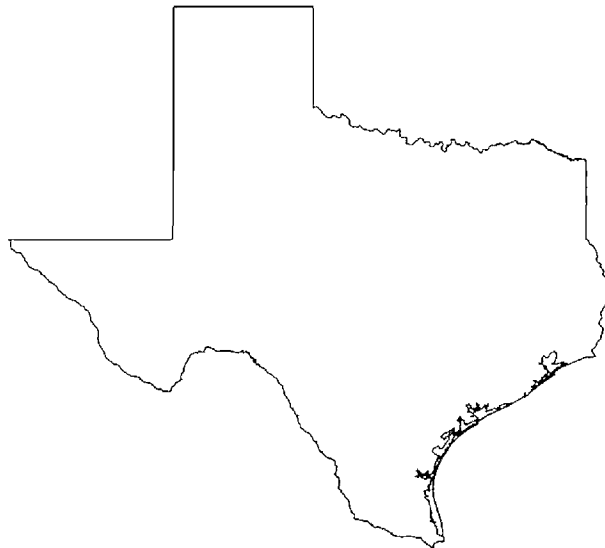
Version ~~89~~.0

Volume 2: Residential Measures

Program Year ~~2021~~ 2022

Last Revision Date:

November ~~2020~~ 2021



Public Utility Commission of Texas

Texas Technical Reference Manual

Version ~~89~~.0

Volume 2: Residential Measures

Program Year ~~2021~~2022

Last Revision Date:

November ~~2020~~2021

Table of Contents

1 Introduction 1

2 Residential Measures 85

2.1 RESIDENTIAL: LIGHTING 85

 2.1.1 ENERGY STAR® Omni-Directional LED Lamps Measure Overview 85

 2.1.2 ENERGY STAR® Specialty and Directional LED Lamps Measure Overview .. 1845

2.2 RESIDENTIAL: HEATING, VENTILATION, AND AIR CONDITIONING 3534

 2.2.1 Air Conditioner and Heat Pump Tune-Ups Measure Overview 3534

 2.2.2 Duct Sealing Measure Overview 4338

 2.2.3 ENERGY STAR® Ground Source Heat Pumps Measure Overview 6257

 2.2.4 Central Air Conditioner and Heat Pumps Measure Overview 7065

 2.2.5 Mini-Split Air Conditioners and Heat Pumps Measure Overview 8580

 2.2.6 Large Capacity Split and Packaged Air Conditioners and
 Heat Pumps Measure Overview 10095

 2.2.7 Packaged Terminal Heat Pumps Measure Overview 107402

 2.2.8 ENERGY STAR® Room Air Conditioners Measure Overview 115440

 2.2.9 ENERGY STAR® Connected Thermostats Measure Overview 125420

 2.2.10 Smart Thermostat Load Management Measure Overview 132427

 2.2.11 Evaporative Cooling Measure Overview 137432

2.3 RESIDENTIAL: BUILDING ENVELOPE 141436

 2.3.1 Air Infiltration Measure Overview 141436

 2.3.2 Ceiling Insulation Measure Overview 151446

 2.3.3 Attic Encapsulation Measure Overview 165460

 2.3.4 Wall Insulation Measure Overview 184478

 2.3.5 Floor Insulation Measure Overview 197490

 2.3.6 ENERGY STAR® Windows Measure Overview 205498

 2.3.7 ENERGY STAR® Low-E Storm Windows Measure Overview 212205

 2.3.8 Solar Screens Measure Overview 219242

 2.3.9 ENERGY STAR® Cool Roofs Measure Overview 226248

2.4 RESIDENTIAL: WATER HEATING 254245

 2.4.1 Faucet Aerators Measure Overview 254245

 2.4.2 Low-Flow Showerheads Measure Overview 260254

 2.4.3 Water Heater Pipe Insulation Measure Overview 266257

 2.4.4 Water Heater Tank Insulation Measure Overview 272263

 2.4.5 Water Heater Installations—Electric Tankless and Fuel
 Substitution Measure Overview 277268

 2.4.6 Heat Pump Water Heaters Measure Overview 286277

 2.4.7 Solar Water Heaters Measure Overview 297288

 2.4.8 Showerhead Temperature Sensitive Restrictor Valves Measure Overview 304295

| | |
|---|---------------|
| 2.4.9 Tub Spout and Showerhead Temperature Sensitive Restrictor Valves Measure Overview | 311302 |
| 2.5 RESIDENTIAL: APPLIANCES | 320340 |
| 2.5.1 ENERGY STAR® Ceiling Fans Measure Overview | 320340 |
| 2.5.2 ENERGY STAR® Clothes Washers Measure Overview | 328348 |
| 2.5.3 ENERGY STAR® Clothes Dryers Measure Overview | 338327 |
| 2.5.4 ENERGY STAR® Dishwashers Measure Overview | 344333 |
| 2.5.5 ENERGY STAR® Refrigerators Measure Overview | 350339 |
| 2.5.6 ENERGY STAR® Freezers Measure Overview | 364353 |
| 2.5.7 ENERGY STAR® Pool Pumps Measure Overview | 376365 |
| 2.5.8 ENERGY STAR® Air Purifiers Measure Overview | 382374 |
| 2.5.9 Advanced Power Strips Measure Overview | 388376 |
| 2.5.10 ENERGY STAR® Electric Vehicle Supply Equipment | 401388 |
| 2.5.11 Refrigerator/Freezer Recycling Measure Overview | 406393 |

| | |
|---|------------|
| Appendix A: Central Air Conditioner and Heat Pumps Deemed Savings Tables | A-1 |
|---|------------|

| | |
|---|------------|
| Appendix B: Mini-split Air Conditioner and Heat Pump Deemed Savings Tables | B-1 |
|---|------------|

List of Figures

| | |
|--|--------|
| Figure 1. Central AC/HPs—Unit Replacement Percentages upon Compressor Failure | 7674 |
| Figure 2. Central AC/HPs—AC Survival Function | 8075 |
| Figure 3. Central AC/HPs—HP Survival Function | 8075 |
| Figure 4. Mini-Split AC/HPs—Unit Replacement Percentages upon Compressor Failure | 9186 |
| Figure 5. Mini-Split AC/HPs—AC Survival Function | 9590 |
| Figure 6. Mini-Split AC/HPs—HP Survival Function | 9590 |
| Figure 7. Survival Function for Room Air Conditioners | 120445 |
| Figure 8. Shower, Bath, and Sink Hot Water Use Profile | 257248 |
| Figure 9. Shower, Bath, and Sink Hot Water Use Profile | 263254 |
| Figure 10. Showerhead TSRVs – Shower, Bath, and Sink Hot Water Use Profile | 308299 |
| Figure 11. Tub Spout/Showerhead TSRVs – Shower, Bath, and Sink Hot Water Use Profile | 317308 |
| Figure 12. Survival Function for ENERGY STAR® Refrigerators | 355344 |
| Figure 13. Survival Function for ENERGY STAR® Freezers | 369358 |

List of Tables

Table 1. Residential Deemed Savings by Measure Category1

Table 2. Omni-Directional LEDs—Baseline Wattage.....107

Table 3. Omni-Directional LEDs Interactive Effects for Cooling Energy Savings and Heating Energy Penalties129

Table 4. Omni-Directional LEDs —Coincidence Factors1340

Table 5. Omni-Directional LEDs—Interactive Effects Factor for Cooling Demand Savings and Heating Demand Penalties.....1340

Table 6. ENERGY STAR® Omni-Directional LEDs—Estimated Useful Life1643

Table 7. Residential Omni-Directional LED Lamps Revision History1744

Table 8. Specialty/Directional LEDs—General Service Non-Reflector Baseline Wattage2047

Table 9. Specialty/Directional LEDs—Decorative Non-Reflector Baseline Wattage2148

Table 10. Specialty/Directional LEDs—Reflector Baseline Wattage2249

Table 11. Specialty/Directional LEDs—Interactive Effects for Cooling Energy Savings and Heating Energy Penalties.....2824

Table 12. Specialty/Directional LEDs—Coincidence Factors.....2925

Table 13. Specialty and Directional LEDs—Interactive Effects Factor for Cooling Demand Savings and Heating Demand Penalties.....2925

Table 14. Specialty/Directional LEDs—Estimated Useful Life3228

Table 15. Residential Specialty and Directional LED Lamps Revision History.....3429

Table 16. AC/HP Tune-Ups—Equivalent Full Load Cooling/Heating Hours.....3834

Table 17. AC/HP Tune-Ups—Coincidence Factors by Climate Zone3935

Table 18. AC/HP Tune-Ups—Deemed Energy Savings per Ton.....3935

Table 19. AC/HP Tune-Ups—Deemed Summer Demand Savings per Ton3935

Table 20. AC/HP Tune-Ups—Deemed Winter Demand Savings per Ton.....4036

Table 21. Residential Air Conditioner or Heat Pump Tune-Ups Revision History4237

Table 22. Duct Sealing—Leakage Categorization Guide.....4644

Table 23. Duct Sealing—Energy Savings V_E per CFM₂₅ Reduction.....4843

Table 24. Duct Sealing—Summer Demand Savings V_S per CFM₂₅ Reduction4843

Table 25. Duct Sealing—Winter Demand Savings V_W per CFM₂₅ Reduction.....4944

Table 26. Duct Sealing—Climate Zone 1: Panhandle Region—Deemed Annual Energy Savings, HTR Alternate Approach (kWh).....5045

Table 27. Duct Sealing—Climate Zone 2: North Region—Deemed Annual Energy Savings, HTR Alternate Approach (kWh).....5045

Table 28. Duct Sealing—Climate Zone 3: South Region—Deemed Annual Energy Savings, HTR Alternate Approach (kWh).....5045

| | |
|---|------|
| Table 29. Duct Sealing—Climate Zone 4: Valley Region—Deemed Annual Energy Savings, HTR Alternate Approach (kWh)..... | 5146 |
| Table 30. Duct Sealing—Climate Zone 5: West Region—Deemed Annual Energy Savings, HTR Alternate Approach (kWh)..... | 5146 |
| Table 31. Duct Sealing—Climate Zone 1: Panhandle Region—Deemed Summer Demand Savings, HTR Alternate Approach (kW) | 5146 |
| Table 32. Duct Sealing—Climate Zone 2: North Region—Deemed Summer Demand Savings, HTR Alternate Approach (kW) | 5146 |
| Table 33. Duct Sealing—Climate Zone 3: South Region—Deemed Summer Demand Savings, HTR Alternate Approach (kW) | 5247 |
| Table 34. Duct Sealing—Climate Zone 4: Valley Region—Deemed Summer Demand Savings, HTR Alternate Approach (kW) | 5247 |
| Table 35. Duct Sealing—Climate Zone 5: West Region—Deemed Summer Demand Savings, HTR Alternate Approach (kW) | 5247 |
| Table 36. Duct Sealing—Climate Zone 1: Panhandle Region—Deemed Winter Demand Savings, HTR Alternate Approach (kW) | 5247 |
| Table 37. Duct Sealing—Climate Zone 2: North Region—Deemed Winter Demand Savings, HTR Alternate Approach (kW) | 5348 |
| Table 38. Duct Sealing—Climate Zone 3: South Region—Deemed Winter Demand Savings, HTR Alternate Approach (kW) | 5348 |
| Table 39. Duct Sealing—Climate Zone 4: Valley Region—Deemed Winter Demand Savings, HTR Alternate Approach (kW) | 5348 |
| Table 40. Duct Sealing—Climate Zone 5: West Region—Deemed Winter Demand Savings, HTR Alternate Approach (kW) | 5348 |
| Table 41. Duct Sealing—Climate Zone 1: Panhandle Region—Deemed Annual Energy Savings, Alternate Approach (kWh)..... | 5449 |
| Table 42. Duct Sealing—Climate Zone 2: North Region—Deemed Annual Energy Savings, Alternate Approach (kWh)..... | 5449 |
| Table 43. Duct Sealing—Climate Zone 3: South Region—Deemed Annual Energy Savings, Alternate Approach (kWh)..... | 5449 |
| Table 44. Duct Sealing—Climate Zone 4: Valley Region—Deemed Annual Energy Savings, Alternate Approach (kWh)..... | 5550 |
| Table 45. Duct Sealing—Climate Zone 5: West Region—Deemed Annual Energy Savings, Alternate Approach (kWh)..... | 5550 |
| Table 46. Duct Sealing—Climate Zone 1: Panhandle Region—Deemed Summer Demand Savings, Alternate Approach (kW)..... | 5550 |
| Table 47. Duct Sealing—Climate Zone 2: North Region—Deemed Summer Demand Savings, Alternate Approach (kW)..... | 5550 |
| Table 48. Duct Sealing—Climate Zone 3: South Region—Deemed Summer Demand Savings, Alternate Approach (kW)..... | 5654 |
| Table 49. Duct Sealing—Climate Zone 4: Valley Region—Deemed Summer Demand Savings, Alternate Approach (kW)..... | 5654 |

| | |
|--|--------------|
| Table 50. Duct Sealing—Climate Zone 5: West Region—Deemed Summer Demand Savings, Alternate Approach (kW)..... | <u>5654</u> |
| Table 51. Duct Sealing—Climate Zone 1: Panhandle Region—Deemed Winter Demand Savings, Alternate Approach (kW)..... | <u>5654</u> |
| Table 52. Duct Sealing—Climate Zone 2: North Region—Deemed Winter Demand Savings, Alternate Approach (kW)..... | <u>5752</u> |
| Table 53. Duct Sealing—Climate Zone 3: South Region—Deemed Winter Demand Savings, Alternate Approach (kW)..... | <u>5752</u> |
| Table 54. Duct Sealing—Climate Zone 4: Valley Region—Deemed Winter Demand Savings, Alternate Approach (kW)..... | <u>5752</u> |
| Table 55. Duct Sealing—Climate Zone 5: West Region—Deemed Winter Demand Savings, Alternate Approach (kW)..... | <u>5752</u> |
| Table 56. Residential Duct Efficiency Improvements Revision History | <u>6055</u> |
| Table 57. GSHP Baseline Efficiencies | <u>6358</u> |
| Table 58. Ground Source Heat Pump ENERGY STAR® Requirements | <u>6358</u> |
| Table 59. Equivalent Full Load Cooling/Heating Hours | <u>6664</u> |
| Table 60. GSHP Coincidence Factors | <u>6762</u> |
| Table 61. Energy Savings for Desuperheaters per Cooling Tonnage | <u>6762</u> |
| Table 62. Summer Peak Demand Savings for Desuperheaters per Cooling Tonnage..... | <u>6762</u> |
| Table 63. Residential GSHPs Revision History | <u>6964</u> |
| Table 64. Central AC/HPs – Baseline Efficiencies..... | <u>7368</u> |
| Table 65. Central AC/HPs—CEE Tier 0 Requirements | <u>7469</u> |
| Table 66. AC and HP Capacity Curve Coefficients..... | <u>7570</u> |
| Table 67. AC and HP EIR Curve Coefficients | <u>7674</u> |
| Table 68. Central AC/HPs—Remaining Useful Life of Replaced AC | <u>7873</u> |
| Table 69. Central AC/HPs—Remaining Useful Life of Replaced HP | <u>7974</u> |
| Table 70. Residential Central AC/HPs Revision History | <u>8479</u> |
| Table 71. Mini-Split AC/HPs—Baseline Efficiencies | <u>8883</u> |
| Table 72. Mini-Split AC/HPs— System CEE Tier 0 Requirements | <u>8984</u> |
| Table 73. Mini-Split AC/HPs—Capacity Curve Coefficients..... | <u>9085</u> |
| Table 74. Mini-Split AC/HPs—EIR Curve Coefficients..... | <u>9186</u> |
| Table 75. Mini-Split AC/HPs—Remaining Useful Life of Replaced ACs | <u>9388</u> |
| Table 76. Mini-Split AC/HPs—Remaining Useful Life of Replaced HPs | <u>9489</u> |
| Table 77. Residential Mini-Split AC/HPs Revision History | <u>9994</u> |
| Table 78. Large Capacity AC/HPs—Baseline Efficiency Levels for NC and ROB for AC/HP | <u>10196</u> |
| Table 79. Large Capacity AC/HPs—Baseline Efficiency Levels for NC and ROB for GSHPs | <u>10297</u> |

| | |
|--|---------------|
| Table 80. Large Capacity AC/HPs—AC/HP Coincidence Factors | <u>10399</u> |
| Table 81. Large Capacity AC/HPs—GSHP Coincidence Factors..... | <u>10499</u> |
| Table 82. Large Capacity AC/HPs—Equivalent Full Load Cooling/Heating Hours..... | <u>10499</u> |
| Table 83. Large Capacity AC/HPs Revision History | <u>106404</u> |
| Table 84. ER Baseline Efficiency Levels for Standard Size PTACs..... | <u>108403</u> |
| Table 85. ROB Minimum Efficiency Levels for PTHPs..... | <u>109404</u> |
| Table 86. PTHP Coincidence Factors | <u>111406</u> |
| Table 87. PTHP Cooling/Heating EFLHs..... | <u>111406</u> |
| Table 88. Remaining Useful Life of ER PTAC Systems | <u>112407</u> |
| Table 89. Residential Packaged Terminal Heat Pumps Revision History | <u>114409</u> |
| Table 90. Room Air Conditioner Baseline Efficiencies for ER, ROB, and NC | <u>116414</u> |
| Table 91. Room Air Conditioner Efficient Condition Specifications | <u>116414</u> |
| Table 92. Room Air Conditioner Annual Operating Hours for Cooling | <u>118413</u> |
| Table 93. Room Air Conditioners—Coincidence Factors..... | <u>118413</u> |
| Table 94. Remaining Useful Life (RUL) of Replaced Room Air Conditioner | <u>119414</u> |
| Table 95. Residential Room Air Conditioners Revision History | <u>123418</u> |
| Table 96. Baseline Efficiency of Existing HVAC Systems..... | <u>126424</u> |
| Table 97. Connected Thermostats—Runtime Reduction Criteria for ENERGY STAR® Certification | <u>127422</u> |
| Table 98. Connected Thermostats—Energy Savings for Thermostats Installed with Existing HVAC Unit (kWh/ton) | <u>128423</u> |
| Table 99. Connected Thermostats—Cooling Energy Savings for Thermostats Installed with New HVAC Unit (kWh/ton)..... | <u>128423</u> |
| Table 100. Connected Thermostats—Heating Energy Savings (HP ONLY) for Thermostats Installed with New HVAC Unit (kWh/ton)..... | <u>128423</u> |
| Table 101. Connected Thermostats – Baseline for Various Equipment Replacement Scenarios..... | <u>129424</u> |
| Table 102. Connected Thermostats—Upstream and Midstream Program Energy Savings (kWh/thermostat) | <u>129424</u> |
| Table 103. Residential ENERGY STAR® Connected Thermostats Revision History | <u>131426</u> |
| Table 104. Smart Thermostat Load Mgmt—Deemed kW Savings Per Device | <u>134429</u> |
| Table 105. Smart Thermostat Load Mgmt—Example Total Program Year Demand Savings Calculation | <u>134429</u> |
| Table 106. Residential Smart Thermostat Load Management Revision History | <u>136434</u> |
| Table 107. Evaporative Cooling Deemed Savings per System..... | <u>139434</u> |
| Table 108. Residential Evaporative Cooling Revision History | <u>140435</u> |
| Table 109. Air Infiltration – N Factors | <u>144439</u> |

| | |
|--|--------|
| Table 110. Air Infiltration—Energy Savings V_E per CFM ₅₀ Reduction | 145140 |
| Table 111. Air Infiltration—Peak Summer Demand Savings V_S per CFM ₅₀ Reduction..... | 146141 |
| Table 112. Air Infiltration—Peak Winter Demand Savings V_W per CFM ₅₀ Reduction | 147142 |
| Table 113. Residential Air Infiltration Revision History | 149144 |
| Table 114. Ceiling Insulation—Prototypical Home Characteristics | 153148 |
| Table 115. Ceiling Insulation—Climate Zone 1: Panhandle Region—Deemed Annual Energy Savings for (kWh/sq. ft.) | 153148 |
| Table 116. Ceiling Insulation—Climate Zone 2: North Region—Deemed Annual Energy Savings(kWh/sq. ft.) | 154149 |
| Table 117. Ceiling Insulation—Climate Zone 3: South Region—Deemed Annual Energy Savings (kWh/sq. ft.) | 154149 |
| Table 118. Ceiling Insulation—Climate Zone 4: Valley Region—Deemed Annual Energy (kWh/sq. ft.) | 154149 |
| Table 119. Ceiling Insulation—Climate Zone 5: West Region—Deemed Annual Energy Savings (kWh/sq. ft.) | 155150 |
| Table 120. Ceiling Insulation—Energy Scale-down Factors: Ceiling Insulation to Less Than R-30 (kWh/sq. ft./ΔR) | 156151 |
| Table 121. Ceiling Insulation—Energy Scale-up Factors: Insulating to Greater Than R-30 (kWh/sq. ft./ΔR)..... | 156151 |
| Table 122. Ceiling Insulation – Climate Zone 1: Panhandle Region—Deemed Summer Demand Savings (kW/sq. ft.) | 157152 |
| Table 123. Ceiling Insulation—Climate Zone 2: North Region—Deemed Summer Demand Savings (kW/sq. ft.) | 157152 |
| Table 124. Ceiling Insulation—Climate Zone 3: South Region—Deemed Summer Demand Savings (kW/sq. ft.) | 157152 |
| Table 125. Ceiling Insulation—Climate Zone 4: Valley Region—Deemed Summer Demand Savings (kW/sq. ft.) | 157152 |
| Table 126. Ceiling Insulation—Climate Zone 5: West Region—Deemed Summer Demand Savings (kW/sq. ft.) | 158153 |
| Table 127. Ceiling Insulation—Summer Peak Demand Scale-Down Factors: Insulating to Less than R-30 (kW/sq. ft./ΔR) | 158153 |
| Table 128. Ceiling Insulation—Summer Peak Demand Scale-Up Factors: Insulating to Greater than R-30 (kW/sq. ft./ΔR)..... | 158153 |
| Table 129. Ceiling Insulation—Climate Zone 1: Panhandle Region—Deemed Winter Demand Savings (kW/sq. ft.) | 159154 |
| Table 130. Ceiling Insulation—Climate Zone 2: North Region—Deemed Winter Demand Savings (kW/sq. ft.) | 159154 |
| Table 131. Ceiling Insulation—Climate Zone 3: South Region – Deemed Winter Demand Savings (kW/sq. ft.) | 159154 |
| Table 132. Ceiling Insulation—Climate Zone 4: Valley Region—Deemed Winter Demand Savings (kW/sq. ft.) | 160155 |

| | |
|--|--------|
| Table 133. Ceiling Insulation—Climate Zone 5: West Region—Deemed Winter Demand Savings (kW/sq. ft.) | 160155 |
| Table 134. Ceiling Insulation—Winter Peak Demand Scale-Down Factors: Insulating to Less than R-30 (kW/sq. ft./ΔR) | 161456 |
| Table 135. Ceiling Insulation—Winter Peak Demand Scale-up Factors: Insulating to greater than R-30(kW/sq. ft./ ΔR)..... | 161456 |
| Table 136. Residential Ceiling Insulation Revision History | 164459 |
| Table 137. Attic Encapsulation—Prototypical Home Characteristics | 167462 |
| Table 138. Attic Encapsulation—Climate Zone 1: Panhandle Region—R-30 Deemed Annual Energy Savings for Insulation Component (kWh/sq. ft) | 168463 |
| Table 139. Attic Encapsulation—Climate Zone 2: North Region— R-30 Deemed Annual Energy Savings for Insulation Component (kWh/sq. ft) | 168463 |
| Table 140. Attic Encapsulation—Climate Zone 3: South Region—R-30 Deemed Annual Energy Savings for Insulation Component (kWh/sq. ft) | 169464 |
| Table 141. Attic Encapsulation—Climate Zone 4: Valley Region—R-30 Deemed Annual Energy Savings for Insulation Component (kWh/sq. ft) | 169464 |
| Table 142. Attic Encapsulation—Climate Zone 5: West Region—R-30 Deemed Annual Energy Savings for Insulation Component (kWh/sq. ft) | 169464 |
| Table 143. Attic Encapsulation—Energy Scale-Down Factors: Insulating to Less Than R-30 (kWh/sq. ft./ΔR) | 170465 |
| Table 144. Attic Encapsulation—Energy Scale-up Factors: Insulating to greater than R-30 (kWh/sq. ft./ΔR)..... | 171466 |
| Table 145. Attic Encapsulation—Climate Zone 1: Panhandle Region—R-30 Deemed Summer Demand Savings for Insulation Component (kW/sq. ft.)..... | 171466 |
| Table 146. Attic Encapsulation—Climate Zone 2: North Region—R-30 Deemed Summer Demand Savings for Insulation Component (kW/sq. ft.)..... | 172466 |
| Table 147. Attic Encapsulation—Climate Zone 3: South Region—R-30 Deemed Summer Demand Savings for Insulation Component (kW/sq. ft.)..... | 172467 |
| Table 148. Attic Encapsulation—Climate Zone 4: Valley Region—R-30 Deemed Summer Demand Savings for Insulation Component (kW/sq. ft.)..... | 172467 |
| Table 149. Attic Encapsulation—Climate Zone 5: West Region—R-30 Deemed Summer Demand Savings for Insulation Component (kW/sq. ft.)..... | 173467 |
| Table 150. Attic Encapsulation—Summer Peak Demand Scale-down Factors: Insulating to less than R-30 (kW/sq. ft./ΔR)..... | 173467 |
| Table 151. Table. Attic Encapsulation—Summer Peak Demand Scale-up Factors: | 173468 |
| Table 152. Attic Encapsulation—Climate Zone 1: Panhandle Region—R-30 Deemed Winter Demand Savings for Insulation Component (kW/sq. ft.)..... | 174468 |
| Table 153. Attic Encapsulation—Climate Zone 2: North Region—R-30 Deemed Winter Demand Savings for Insulation Component (kW/sq. ft.)..... | 174469 |
| Table 154. Attic Encapsulation—Climate Zone 3: South Region-R-30 Deemed Winter Demand Savings for Insulation Component (kW/sq. ft.)..... | 174469 |

| | |
|--|--------|
| Table 155. Attic Encapsulation—Climate Zone 4: Valley Region—R-30 Deemed Winter Demand Savings for Insulation Component (kW/sq. ft.)..... | 175169 |
| Table 156. Attic Encapsulation—Climate Zone 5: West Region—R-30 Deemed Winter Demand Savings for Insulation Component (kW/sq. ft.)..... | 175169 |
| Table 157. Attic Encapsulation—Winter Peak Demand Scale-down Factors: Insulating to less than R-30 (kW/sq. ft./ΔR)..... | 176170 |
| Table 158. Attic Encapsulation—Winter Peak Demand Scale-up Factors: Insulating to greater than R-30 (kW/sq. ft./ ΔR)..... | 176171 |
| Table 159. Attic Encapsulation—Prototypical Home Characteristics | 178172 |
| Table 160. Attic Encapsulation—Deemed Annual Energy Savings for Infiltration Reduction Component: 18% Air Infiltration Reduction (kWh/home) | 178172 |
| Table 161. Attic Encapsulation—Deemed Summer Demand Savings for Infiltration Reduction Component: 18% Air Infiltration Reduction (kW/home) | 179173 |
| Table 162. Attic Encapsulation—Deemed Winter Demand Savings for the Infiltration Reduction Component: 18% Air Infiltration Reduction (kW/home) | 179173 |
| Table 163. Residential Attic Encapsulation Revision History | 183177 |
| Table 164. Wall Insulation—High-Efficiency Condition R-Values for 2x4 and 2x6 Walls.... | 185179 |
| Table 165. Wall Insulation—Prototypical Home Characteristics, Climate Zones 1-4 | 186180 |
| Table 166. Wall Insulation—Deemed Annual Energy Savings, Insulation of 2x4 Walls to R- 13 (kWh/sq. ft.)..... | 187181 |
| Table 167. Wall Insulation—Deemed Annual Energy Savings, Insulation of 2x4 Walls to R-21 (kWh/sq. ft.)..... | 187181 |
| Table 168. Wall Insulation – Deemed Annual Energy Savings, Insulation of 2x6 Walls to R-17 (kWh/sq. ft.)..... | 188182 |
| Table 169. Wall Insulation—Deemed Annual Energy Savings, Insulation of 2x6 Walls to R-33 (kWh/sq. ft.)..... | 189182 |
| Table 170. Wall Insulation—Deemed Summer Demand Savings, Insulation of 2x4 Walls to R-13 (kW/sq. ft.)..... | 189183 |
| Table 171. Wall Insulation—Deemed Summer Demand Savings, Insulation of 2x4 Walls to R-21 (kW/sq. ft.)..... | 190184 |
| Table 172. Wall Insulation—Deemed Summer Demand Savings, Insulation of 2x6 Walls to R-17 (kW/sq. ft.)..... | 191184 |
| Table 173. Wall Insulation—Deemed Summer Demand Savings, Insulation of 2x6 Walls to R-33 (kW/sq. ft.)..... | 192185 |
| Table 174. Wall Insulation—Deemed Winter Demand Savings, Insulation of 2x4 Walls to R-13 (kW/sq. ft.)..... | 193186 |
| Table 175. Wall Insulation—Deemed Winter Demand Savings, Insulation of 2x4 Walls to R-17 (kW/sq. ft.)..... | 193186 |
| Table 176. Wall Insulation—Deemed Winter Demand Savings, Insulation of 2x6 Walls to R-17 (kW/sq. ft.)..... | 194187 |

| | |
|--|---------------|
| Table 177. Wall Insulation—Deemed Winter Demand Savings, Insulation of 2x6 Walls to R-33 (kW/sq. ft.)..... | <u>194187</u> |
| Table 178. Residential Wall Insulation Revision History..... | <u>196489</u> |
| Table 179. Floor Insulation—Prototypical Home Characteristics..... | <u>199492</u> |
| Table 180. Floor Insulation—Climate Zone 1: Panhandle Region—Deemed Annual Energy Savings (kWh/sq. ft.)..... | <u>199492</u> |
| Table 181. Floor Insulation – Climate Zone 2: North Region—Deemed Annual Energy Savings (kWh/sq. ft.)..... | <u>200493</u> |
| Table 182. Floor Insulation—Climate Zone 3: South Region—Deemed Annual Energy Savings (kWh/sq. ft.)..... | <u>200493</u> |
| Table 183. Floor Insulation—Climate Zone 4: Valley Region—Deemed Annual Energy Savings (kWh/sq. ft.)..... | <u>200493</u> |
| Table 184. Floor Insulation—Climate Zone 5: West Region—Deemed Annual Energy Savings (kWh/sq. ft.)..... | <u>200493</u> |
| Table 185. Floor Insulation—Climate Zone 1: Panhandle Region—Deemed Summer Demand Savings (kW/sq. ft.)..... | <u>200493</u> |
| Table 186. Floor Insulation—Climate Zone 2: North Region—Deemed Summer Demand Savings (kW/sq. ft.)..... | <u>201494</u> |
| Table 187. Floor Insulation—Climate Zone 3: South Region—Deemed Summer Demand Savings (kW/sq. ft.)..... | <u>201494</u> |
| Table 188. Floor Insulation—Climate Zone 4: Valley Region—Deemed Summer Demand Savings (kW/sq. ft.)..... | <u>201494</u> |
| Table 189. Floor Insulation—Climate Zone 5: West Region—Deemed Summer Demand Savings (kW/sq. ft.)..... | <u>201494</u> |
| Table 190. Floor Insulation—Climate Zone 1: Panhandle Region—Deemed Winter Demand Savings (kW/sq. ft.)..... | <u>201494</u> |
| Table 191. Floor Insulation—Climate Zone 2: North Region—Deemed Winter Demand Savings (kW/sq. ft.)..... | <u>202495</u> |
| Table 192. Floor Insulation—Climate Zone 3: South Region—Deemed Winter Demand Savings (kW/sq. ft.)..... | <u>202495</u> |
| Table 193. Floor Insulation—Climate Zone 4: Valley Region—Deemed Winter Demand Savings (kW/sq. ft.)..... | <u>202495</u> |
| Table 194. Floor Insulation—Climate Zone 5: West Region—Deemed Winter Demand Savings (kW/sq. ft.)..... | <u>202495</u> |
| Table 195. Residential Floor Insulation Revision History..... | <u>204497</u> |
| Table 196. ENERGY STAR® Windows—Baseline Window Specification..... | <u>206499</u> |
| Table 197. ENERGY STAR® Windows—High-Efficiency Specification effective January 2015..... | <u>206499</u> |
| Table 198. ENERGY STAR® Windows—TRM and ENERGY STAR® Climate Zones..... | <u>206499</u> |
| Table 199. ENERGY STAR® Windows—Replacing Single-Pane Windows, Deemed Annual Energy Savings (kWh/sq. ft.)..... | <u>207200</u> |

| | |
|--|---------------|
| Table 200. ENERGY STAR® Windows—Replacing Double-Pane Windows Deemed Annual Energy Savings (kWh/sq. ft.) | <u>207200</u> |
| Table 201. ENERGY STAR® Windows—Replacing Single-Pane Windows, Deemed Summer Demand Savings (kW/sq. ft.) | <u>208204</u> |
| Table 202. ENERGY STAR® Windows—Replacing Double-Pane Windows, Deemed Summer Demand Savings (kW/sq. ft.) | <u>208204</u> |
| Table 203. ENERGY STAR® Windows—Replacing Single-Pane Windows, Deemed Winter Demand Savings by Heat Type (kW/sq. ft.) | <u>209202</u> |
| Table 204. ENERGY STAR® Windows—Replacing Double-Pane Windows, Deemed Winter Demand Savings by Heat Type (kW/sq. ft.) | <u>209202</u> |
| Table 205. Residential ENERGY STAR® Windows Revision History | <u>211204</u> |
| Table 206. ENERGY STAR® Low-E Storm Windows – ENERGY STAR® Specification | <u>213206</u> |
| Table 207. ENERGY STAR® Low-E Storm Windows – Window Assembly Properties | <u>214207</u> |
| Table 208. ENERGY STAR® Low-E Storm Windows – Modeled Building Characteristics | <u>214207</u> |
| Table 209. ENERGY STAR® Low-E Storm Windows – Deemed Annual Energy Savings (kWh/sq. ft.), Single-Pane Baseline | <u>215208</u> |
| Table 210. ENERGY STAR® Low-E Storm Windows – Deemed Annual Energy Savings (kWh/sq. ft.), Double-Pane Baseline | <u>215208</u> |
| Table 211. ENERGY STAR® Low-E Storm Windows – Deemed Summer Demand Savings (kW/sq. ft.), Single-Pane Baseline | <u>216209</u> |
| Table 212. ENERGY STAR® Low-E Storm Windows – Deemed Summer Demand Savings (kW/sq. ft.), Double-Pane Baseline | <u>216209</u> |
| Table 213. ENERGY STAR® Low-E Storm Windows – Deemed Winter Demand Savings (kW/sq. ft.), Single-Pane Baseline | <u>216209</u> |
| Table 214. ENERGY STAR® Low-E Storm Windows – Deemed Winter Demand Savings (kW/sq. ft.), Double-Pane Baseline | <u>217240</u> |
| Table 215. ENERGY STAR® Low-E Storm Windows – Revision History | <u>218244</u> |
| Table 216. Deemed Energy (kWh) Savings per Square Foot of Solar Screen..... | <u>222245</u> |
| Table 217. Solar Screens—Deemed Summer Peak Demand (kW) Savings per Square Foot of Solar Screen | <u>222245</u> |
| Table 218. Solar Screens—Deemed Winter Peak Demand (kW) Savings per Square Foot of Solar Screen | <u>223246</u> |
| Table 219. Residential Solar Screens Revision History | <u>224247</u> |
| Table 220. Cool Roofs—ENERGY STAR® Specification | <u>227249</u> |
| Table 221. Cool Roofs—Prototypical Home Characteristics..... | <u>228220</u> |
| Table 222. Cool Roofs—Climate Zone 1: Panhandle Region – Deemed Annual Energy Savings for Residential Reflective Roof Installation (kWh/sq. ft.) | <u>229224</u> |
| Table 223. Cool Roofs—Climate Zone 2: North Region – Deemed Annual Energy Savings for Residential Reflective Roof Installation (kWh/sq. ft.) | <u>230222</u> |

| | |
|--|---------------|
| Table 224. Cool Roofs—Climate Zone 3: South Region – Deemed Annual Energy Savings for Residential Reflective Roof Installation (kWh/sq. ft.) | <u>231223</u> |
| Table 225. Cool Roofs—Climate Zone 4: Valley Region – Deemed Annual Energy Savings for Residential Reflective Roof Installation (kWh/sq. ft.) | <u>232224</u> |
| Table 226. Cool Roofs—Climate Zone 5: West Region – Deemed Annual Energy Savings for Residential Reflective Roof Installation (kWh/sq. ft.) | <u>233225</u> |
| Table 227. Cool Roofs—Climate Zone 1: Panhandle Region – Deemed Annual Energy Savings for Residential Reflective Roof Installation (kWh/sq. ft.) | <u>234226</u> |
| Table 228. Cool Roofs—Climate Zone 2: North Region – Deemed Annual Energy Savings for Residential Reflective Roof Installation (kWh/sq. ft.) | <u>235227</u> |
| Table 229. Cool Roofs—Climate Zone 3: South Region – Deemed Annual Energy Savings for Residential Reflective Roof Installation (kWh/sq. ft.) | <u>236228</u> |
| Table 230. Cool Roofs—Climate Zone 4: Valley Region – Deemed Annual Energy Savings for Residential Reflective Roof Installation (kWh/sq. ft.) | <u>236228</u> |
| Table 231. Cool Roofs—Climate Zone 5: West Region – Deemed Annual Energy Savings for Residential Reflective Roof Installation (kWh/sq. ft.) | <u>237229</u> |
| Table 232. Cool Roofs—Climate Zone 1: Panhandle Region – Deemed Summer Demand Savings for Residential Reflective Roof Installation (kW/sq. ft.) | <u>238230</u> |
| Table 233. Cool Roofs—Climate Zone 2: North Region – Deemed Summer Demand Savings for Residential Reflective Roof Installation (kW/sq. ft.) | <u>238230</u> |
| Table 234. Cool Roofs—Climate Zone 3: South Region – Deemed Summer Demand Savings for Residential Reflective Roof Installation (kW/sq. ft.) | <u>239231</u> |
| Table 235. Cool Roofs—Climate Zone 4: Valley Region – Deemed Summer Demand Savings for Residential Reflective Roof Installation (kW/sq. ft.) | <u>240232</u> |
| Table 236. Cool Roofs—Climate Zone 5: West Region – Deemed Summer Demand Savings for Residential Reflective Roof Installation (kW/sq. ft.) | <u>240232</u> |
| Table 237. Cool Roofs—Climate Zone 1: Panhandle Region – Deemed Summer Demand Savings for Residential Reflective Roof Installation (kW/sq. ft.) | <u>241233</u> |
| Table 238. Cool Roofs—Climate Zone 2: North Region – Deemed Summer Demand Savings for Residential Reflective Roof Installation (kW/sq. ft.) | <u>242234</u> |
| Table 239. Cool Roofs—Climate Zone 3: South Region – Deemed Summer Demand Savings for Residential Reflective Roof Installation (kW/sq. ft.) | <u>242234</u> |
| Table 240. Cool Roofs—Climate Zone 4: Valley Region – Deemed Summer Demand Savings for Residential Reflective Roof Installation (kW/sq. ft.) | <u>243235</u> |
| Table 241. Cool Roofs—Climate Zone 5: West Region – Deemed Summer Demand Savings for Residential Reflective Roof Installation (kW/sq. ft.) | <u>243235</u> |
| Table 242. Cool Roofs—Climate Zone 1: Panhandle Region – Deemed Winter Demand Savings for Residential Reflective Roof Installation (kW/sq. ft.) | <u>244236</u> |
| Table 243. Cool Roofs—Climate Zone 2: North Region – Deemed Winter Demand Savings for Residential Reflective Roof Installation (kW/sq. ft.) | <u>245237</u> |
| Table 244. Cool Roofs—Climate Zone 3: South Region – Deemed Winter Demand Savings for Residential Reflective Roof Installation (kW/sq. ft.) | <u>246238</u> |

| | |
|---|---------------|
| Table 245. Cool Roofs—Climate Zone 4: Valley Region – Deemed Winter Demand Savings for Residential Reflective Roof Installation (kW/sq. ft.) | <u>247239</u> |
| Table 246. Cool Roofs—Climate Zone 5: West Region – Deemed Winter Demand Savings for Residential Reflective Roof Installation (kW/sq. ft.) | <u>247239</u> |
| Table 247. Cool Roofs—Climate Zone 1: Panhandle Region – Deemed Winter Demand Savings for Residential Reflective Roof Installation (kW/sq. ft.) | <u>248240</u> |
| Table 248. Cool Roofs—Climate Zone 2: North Region – Deemed Winter Demand Savings for Residential Reflective Roof Installation (kW/sq. ft.) | <u>249241</u> |
| Table 249. Cool Roofs—Climate Zone 3: South Region – Deemed Winter Demand Savings for Residential Reflective Roof Installation (kW/sq. ft.) | <u>249241</u> |
| Table 250. Cool Roofs—Climate Zone 4: Valley Region – Deemed Winter Demand Savings for Residential Reflective Roof Installation (kW/sq. ft.) | <u>250242</u> |
| Table 251. Cool Roofs—Climate Zone 5: West Region – Deemed Winter Demand Savings for Residential Reflective Roof Installation (kW/sq. ft.) | <u>250242</u> |
| Table 252. Residential Cool Roofs Revision History | <u>252244</u> |
| Table 253. Faucet Aerators—Baseline and Efficiency Standard | <u>254245</u> |
| Table 254. Faucet Aerators—Water Mains Temperature | <u>257248</u> |
| Table 255. Faucet Aerators—Peak Coincidence Factors | <u>257248</u> |
| Table 256. Residential Faucet Aerators Revision History | <u>259250</u> |
| Table 257. Low-Flow Showerheads—Baseline and Efficiency Standards | <u>260251</u> |
| Table 258. Low-Flow Showerheads—Water Mains Temperatures | <u>262253</u> |
| Table 259. Low-Flow Showerheads—Peak Coincidence Factors | <u>263254</u> |
| Table 260. Residential Low-Flow Showerheads Revision History | <u>265256</u> |
| Table 261. Water Heater Pipe Insulation—Baseline Standard | <u>266257</u> |
| Table 262. Water Heater Pipe Insulation—Efficiency Standard | <u>267258</u> |
| Table 263. Estimated Pipe Surface Area | <u>268259</u> |
| Table 264. Ambient Temperatures per Climate Zone | <u>269260</u> |
| Table 265. Residential Water Heater Pipe Insulation Revision History | <u>271262</u> |
| Table 266. Estimated Tank Area | <u>273264</u> |
| Table 267. Ambient Temperatures per Climate Zone | <u>274265</u> |
| Table 268. Residential Water Heater Tank Insulation Revision History | <u>276267</u> |
| Table 269. Federal Standard for Residential Electric Storage Water Heaters | <u>278269</u> |
| Table 270. Water Heater Replacement—Efficiency Standards | <u>279270</u> |
| Table 271. Water Heater Consumption (Gal/Year) | <u>280271</u> |
| Table 272. Water Mains Temperature | <u>281272</u> |
| Table 273. Coincident Peak Demand Factors | <u>282273</u> |
| Table 274. Residential Water Heater Installations Revision History | <u>285276</u> |

| | |
|---|---------------|
| Table 275. Federal Standard for Residential Water Heaters | <u>287278</u> |
| Table 276. Heat Pump Water Heaters—Minimum Required Uniform Energy Factors | <u>287278</u> |
| Table 277. Medium Usage Residential HPWH Deemed Annual Energy Savings (kWh)..... | <u>289280</u> |
| Table 278. High Usage Residential HPWH Deemed Annual Energy Savings (kWh) | <u>290284</u> |
| Table 279. Medium Usage Residential HPWH Deemed Summer Demand Savings (kW) | <u>291282</u> |
| Table 280. High Usage Residential HPWH Deemed Summer Demand Savings (kW) | <u>292283</u> |
| Table 281. Medium Usage Residential HPWH Deemed Winter Demand Savings (kW) | <u>293284</u> |
| Table 282. High Usage Residential HPWH Deemed Winter Demand Savings (kW) | <u>294285</u> |
| Table 283. Residential Heat Pump Water Heaters Revision History | <u>295286</u> |
| Table 284. Federal Standard for Residential Electric Storage Water Heaters | <u>298289</u> |
| Table 285. Water Heater Consumption (Gal/Year) | <u>299290</u> |
| Table 286. Water Mains Temperature | <u>300294</u> |
| Table 287. Coincident Peak Demand Factors | <u>301292</u> |
| Table 288. Residential Solar Water Heaters Revision History | <u>302293</u> |
| Table 289. Showerhead TSRVs – Hot Water Usage Reduction | <u>306297</u> |
| Table 290. Showerhead TSRVs – Water Mains Temperatures | <u>308299</u> |
| Table 291. Water Fixture Peak Demand Ratios | <u>308299</u> |
| Table 292. Residential Showerhead Temperature Sensitive Restrictor Valves Revision History | <u>310304</u> |
| Table 293. Tub Spout/Showerhead TSRVs – Hot Water Usage Reduction | <u>314305</u> |
| Table 294. Tub Spout/Showerhead TSRVs – Water Mains Temperature | <u>316307</u> |
| Table 295. Tub Spout/Showerhead TSRVs – Peak Coincidence Factors..... | <u>317307</u> |
| Table 296. Residential Tub Spout and Showerhead Temperature Sensitive Restrictor Valves Revision History | <u>318309</u> |
| Table 297. ENERGY STAR® Ceiling Fan Definitions | <u>321344</u> |
| Table 298. ENERGY STAR® Ceiling Fan Efficiency Requirements | <u>321344</u> |
| Table 299. ENERGY STAR® Ceiling Fan Light Kit Efficacy Requirements | <u>321344</u> |
| Table 300. ENERGY STAR® Ceiling Fans—Interactive Effects Factor for Cooling Energy Savings and Heating Energy Penalties..... | <u>323343</u> |
| Table 301. Ceiling Fan Motor Wattages | <u>323343</u> |
| Table 302. Ceiling Fan Operating Percentages | <u>324344</u> |
| Table 303. ENERGY STAR® Ceiling Fans—Lighting Coincidence Factors..... | <u>325345</u> |
| Table 304. ENERGY STAR® Ceiling Fans—Interactive Effects Factor for Cooling Demand Savings and Heating Demand Penalties..... | <u>325345</u> |
| Table 305. Ceiling Fans Deemed Energy Savings | <u>325345</u> |
| Table 306. Ceiling Fans Deemed Demand Savings - Summer..... | <u>326346</u> |

| | |
|---|---------------|
| Table 307. Ceiling Fans Deemed Demand Savings - Winter..... | <u>326316</u> |
| Table 308. Residential ENERGY STAR® Ceiling Fans Revision History | <u>327317</u> |
| Table 309. Federal Standard for Clothes Washers..... | <u>329319</u> |
| Table 310. ENERGY STAR® Specifications for Residential Clothes Washers | <u>329319</u> |
| Table 311. ENERGY STAR® Clothes Washer Characteristics..... | <u>332322</u> |
| Table 312. ENERGY STAR® Clothes Washer Coincidence Factors | <u>333322</u> |
| Table 313. ENERGY STAR® Clothes Washer Energy Savings (kWh) | <u>333323</u> |
| Table 314. ENERGY STAR® Clothes Washer Summer Peak Demand Savings (kW)..... | <u>334323</u> |
| Table 315. All Climate Zones—ENERGY STAR® Clothes Washer Winter Demand Savings (kW)..... | <u>335324</u> |
| Table 316. Residential ENERGY STAR® Clothes Washers Revision History..... | <u>336325</u> |
| Table 317. Federal Standard for Residential Clothes Dryers..... | <u>339328</u> |
| Table 318. ENERGY STAR® Specifications for Residential Clothes Dryers..... | <u>339328</u> |
| Table 319. Default Average Load for Clothes Dryers in Pounds..... | <u>340329</u> |
| Table 320. ENERGY STAR® Clothes Dryer Coincidence Factors..... | <u>341330</u> |
| Table 321. ENERGY STAR® Clothes Dryer Energy Savings (kWh/Year) | <u>341330</u> |
| Table 322. ENERGY STAR® Clothes Dryer Summer Peak Demand Savings (kW) | <u>342331</u> |
| Table 323. ENERGY STAR® Clothes Dryer Winter Demand Savings (kW) | <u>342331</u> |
| Table 324. Residential ENERGY STAR® Clothes Dryers Revision History | <u>343332</u> |
| Table 325. Federal Standard for Dishwashers | <u>344333</u> |
| Table 326. ENERGY STAR® Specifications for Dishwashers | <u>345334</u> |
| Table 327. ENERGY STAR® Dishwasher Coincidence Factors..... | <u>347336</u> |
| Table 328. ENERGY STAR® Dishwasher Energy Savings | <u>347336</u> |
| Table 329. ENERGY STAR® Dishwasher Summer Peak Demand Savings (kW) | <u>347336</u> |
| Table 330. ENERGY STAR® Dishwasher Winter Peak Demand Savings (kW) | <u>348337</u> |
| Table 331. Residential ENERGY STAR® Dishwashers Revision History | <u>349338</u> |
| Table 332. ENERGY STAR® Specifications for Refrigerators | <u>351340</u> |
| Table 333. Formulas to Calculate the ENERGY STAR® Criteria for each Refrigerator Product Category by Adjusted Volume | <u>352341</u> |
| Table 334. ENERGY STAR® Refrigerator Load Shape Adjustment Factors | <u>353342</u> |
| Table 335. Remaining Useful Life (RUL) of Replaced Refrigerator..... | <u>354343</u> |
| Table 336. ENERGY STAR® Refrigerators Energy Savings (kWh) by Refrigerator Type... | <u>357346</u> |
| Table 337. ENERGY STAR® Refrigerators Replace-on-Burnout Summer Demand Savings (kW) by Refrigerator Type..... | <u>358347</u> |
| Table 338. ENERGY STAR® Refrigerators Early Retirement Summer Demand Savings (kW) by Refrigerator Type..... | <u>359348</u> |

| | |
|--|---------------|
| Table 339. ENERGY STAR® Refrigerators Replace-on-burnout Winter Demand Savings (kW) by Refrigerator Type | <u>360349</u> |
| Table 340. ENERGY STAR® Refrigerators Early Retirement Winter Demand Savings (kW) by Refrigerator Type | <u>361350</u> |
| Table 341. Residential ENERGY STAR® Refrigerators Revision History | <u>363352</u> |
| Table 342. ENERGY STAR® Specifications for Freezers..... | <u>365354</u> |
| Table 343. Formulas to Calculate the ENERGY STAR® Criteria for Select Freezer Product Categories by Adjusted Volume..... | <u>366355</u> |
| Table 344. ENERGY STAR® Freezer Load Shape Adjustment Factors..... | <u>367356</u> |
| Table 345. Remaining Useful Life (RUL) of Replaced Freezer | <u>368357</u> |
| Table 346. ENERGY STAR® Freezers Energy Savings (kWh) by Freezer Type..... | <u>371360</u> |
| Table 347. ENERGY STAR® Freezers Replace-on-Burnout Summer Demand Savings (kW) by Freezer Type..... | <u>372361</u> |
| Table 348. ENERGY STAR® Freezers Early Retirement Summer Demand Savings (kW) by Freezer Type..... | <u>372361</u> |
| Table 349. ENERGY STAR® Freezers Replace-on-Burnout Winter Demand Savings (kW) by Freezer Type..... | <u>373362</u> |
| Table 350. ENERGY STAR® Freezers Early Retirement Winter Demand Savings (kW) by Freezer Type..... | <u>373362</u> |
| Table 351. Residential ENERGY STAR® Clothes Dryers Revision History | <u>375364</u> |
| Table 352. Conventional Pool Pumps Assumptions | <u>378367</u> |
| Table 353. ENERGY STAR® Pool Pumps Assumptions | <u>378367</u> |
| Table 354. Demand Factors..... | <u>379368</u> |
| Table 355. ENERGY STAR® Variable Speed Pool Pump Energy Savings | <u>379368</u> |
| Table 356. ENERGY STAR® Variable Speed Pool Pump Summer Demand Savings..... | <u>379368</u> |
| Table 357. ENERGY STAR® Variable Speed Pool Pump Winter Demand Savings | <u>380369</u> |
| Table 358. Residential ENERGY STAR® Pool Pumps Revision History | <u>381370</u> |
| Table 359. ENERGY STAR® Specifications for Air Purifiers | <u>383372</u> |
| Table 360. ENERGY STAR® Air Purifiers Coincidence Factors..... | <u>384373</u> |
| Table 361. ENERGY STAR® Air Purifiers Energy Savings (kWh)..... | <u>385374</u> |
| Table 362. ENERGY STAR® Air Purifiers Summer Peak Demand Savings (kW) | <u>385374</u> |
| Table 363. ENERGY STAR® Air Purifiers Winter Peak Demand Savings (kW)..... | <u>386374</u> |
| Table 364. Residential ENERGY STAR® Air Purifiers Revision History | <u>387375</u> |
| Table 365. APS – Peripheral Watt Consumption Breakdown | <u>390378</u> |
| Table 366. APS—Coincidence Factors | <u>393381</u> |
| Table 367. APS—Deemed Savings for Tier 1 Residential APS | <u>395383</u> |
| Table 368. APS—Deemed Savings for Tier 2 Residential APS | <u>398385</u> |

| | |
|---|-------------------|
| Table 369. Residential ENERGY STAR® Advanced Power Strips Revision History..... | 400387 |
| Table 370. EVSE Peak Load Share | 403390 |
| Table 371. EVSE Annual Energy Savings..... | 403390 |
| Table 372. EVSE Peak Demand Savings..... | 404394 |
| Table 373. Residential ENERGY STAR® Electric Vehicle Supply Equipment Revision History..... | 405392 |
| Table 374. Refrigerator/Freezer Recycling – Average Annual Energy Consumption..... | 407394 |
| Table 375. Refrigerator/Freezer Recycling – Load Shape Adjustment Factors | 408395 |
| Table 376. Residential Refrigerator/Freezer Recycling Revision History | 410397 |
| Table 377: Central Energy Savings (Cooling kWh) for 14.0 SEER Baseline—Zone 1 | A-1 |
| Table 378: Central Energy Savings (Cooling kWh) for 13.08 SEER Baseline—Zone 1 | A-2 |
| Table 379: Central Energy Savings (Cooling kWh) for 12.44 SEER Baseline—Zone 1 | A-5 |
| Table 380: Central Energy Savings (Cooling kWh) for 10.0 SEER Early Retirement Baseline—Zone 1 | A-8 |
| Table 381: Central Energy Savings (Heating kWh) for 8.2 HSPF Baseline—Zone 1 | A-11 |
| Table 382: Central Energy Savings (Heating kWh) for 7.7 HSPF Baseline—Zone 1 | A-14 |
| Table 383: Central Energy Savings (Heating kWh) for 6.8 HSPF Baseline—Zone 1 | A-17 |
| Table 384: Central Energy Savings (Heating kWh) for 3.412 HSPF Baseline—Zone 1 | A-20 |
| Table 385: Central Energy Savings (Cooling kWh) for 14.0 SEER Baseline—Zone 2..... | A-23 |
| Table 386: Central Energy Savings (Cooling kWh) for 13.08 SEER Baseline—Zone 2..... | A-23 |
| Table 387: Central Energy Savings (Cooling kWh) for 12.44 SEER Baseline—Zone 2..... | A-26 |
| Table 388: Central Energy Savings (Cooling kWh) for 10.0 SEER Early Retirement Baseline—Zone 2..... | A-29 |
| Table 389: Central Energy Savings (Heating kWh) for 8.2 HSPF Baseline—Zone 2..... | A-32 |
| Table 390: Central Energy Savings (Heating kWh) for 7.7 HSPF Baseline—Zone 2..... | A-35 |
| Table 391: Central Energy Savings (Heating kWh) for 6.8 HSPF Baseline—Zone 2..... | A-38 |
| Table 392: Central Energy Savings (Heating kWh) for 3.412 HSPF Baseline—Zone 2..... | A-41 |
| Table 393: Central Energy Savings (Cooling kWh) for 14.0 SEER Baseline—Zone 3..... | A-44 |
| Table 394: Central Energy Savings (Cooling kWh) for 13.08 SEER Baseline—Zone 3..... | A-44 |
| Table 395: Central Energy Savings (Cooling kWh) for 12.44 SEER Baseline—Zone 3..... | A-47 |
| Table 396: Central Energy Savings (Cooling kWh) for 10.0 SEER Early Retirement Baseline—Zone 3..... | A-50 |
| Table 397: Central Energy Savings (Heating kWh) for 8.2 HSPF Baseline—Zone 3..... | A-53 |
| Table 398: Central Energy Savings (Heating kWh) for 7.7 HSPF Baseline—Zone 3..... | A-56 |
| Table 399: Central Energy Savings (Heating kWh) for 6.8 HSPF Baseline—Zone 3..... | A-59 |
| Table 400: Central Energy Savings (Heating kWh) for 3.412 HSPF Baseline—Zone 3..... | A-62 |

| | |
|--|-------|
| Table 401: Central Energy Savings (Cooling kWh) for 14.0 SEER Baseline—Zone 4 | A-65 |
| Table 402: Central Energy Savings (Cooling kWh) for 13.08 SEER Baseline—Zone 4 | A-65 |
| Table 403: Central Energy Savings (Cooling kWh) for 12.44 SEER Baseline—Zone 4 | A-68 |
| Table 404: Central Energy Savings (Cooling kWh) for 10.0 SEER Early Retirement Baseline—Zone 4 | A-71 |
| Table 405: Central Energy Savings (Heating kWh) for 8.2 HSPF Baseline—Zone 4 | A-74 |
| Table 406: Central Energy Savings (Heating kWh) for 7.7 HSPF Baseline—Zone 4 | A-77 |
| Table 407: Central Energy Savings (Heating kWh) for 6.8 HSPF Baseline—Zone 4 | A-80 |
| Table 408: Central Energy Savings (Heating kWh) for 3.412 HSPF Baseline—Zone 4 | A-83 |
| Table 409: Central Energy Savings (Cooling kWh) for 14.0 SEER Baseline—Zone 5 | A-86 |
| Table 410: Central Energy Savings (Cooling kWh) for 13.08 SEER Baseline—Zone 5 | A-86 |
| Table 411: Central Energy Savings (Cooling kWh) for 12.44 SEER Baseline—Zone 5 | A-89 |
| Table 412: Central Energy Savings (Cooling kWh) for 10.0 SEER Early Retirement Baseline—Zone 5 | A-92 |
| Table 413: Central Energy Savings (Heating kWh) for 8.2 HSPF Baseline—Zone 5 | A-95 |
| Table 414: Central Energy Savings (Heating kWh) for 7.7 HSPF Baseline—Zone 5 | A-98 |
| Table 415: Central Energy Savings (Heating kWh) for 6.8 HSPF Baseline—Zone 5 | A-101 |
| Table 416: Central Energy Savings (Heating kWh) for 3.412 HSPF Baseline—Zone 5 | A-104 |
| Table 417: Central Summer Demand Savings for 14.0 SEER Baseline—Zone 1 | A-107 |
| Table 418: Central Summer Demand Savings for 13.08 SEER Baseline—Zone 1 | A-108 |
| Table 419: Central Summer Demand Savings for 12.44 SEER Baseline—Zone 1 | A-111 |
| Table 420: Central Summer Demand Savings for 10.0 SEER Early Retirement Baseline—Zone 1 | A-114 |
| Table 421: Central Summer Demand Savings for 14.0 SEER Baseline—Zone 2 | A-117 |
| Table 422: Central Summer Demand Savings for 13.08 SEER Baseline—Zone 2 | A-117 |
| Table 423: Central Summer Demand Savings for 12.44 SEER Baseline—Zone 2 | A-120 |
| Table 424: Central Summer Demand Savings for 10.0 SEER Early Retirement Baseline—Zone 2 | A-123 |
| Table 425: Central Summer Demand Savings for 14.0 SEER Baseline—Zone 3 | A-126 |
| Table 426: Central Summer Demand Savings for 13.08 SEER Baseline—Zone 3 | A-126 |
| Table 427: Central Summer Demand Savings for 12.44 SEER Baseline—Zone 3 | A-129 |
| Table 428: Central Summer Demand Savings for 10.0 SEER Early Retirement Baseline—Zone 3 | A-132 |
| Table 429: Central Summer Demand Savings for 14.0 SEER Baseline—Zone 4 | A-135 |
| Table 430: Central Summer Demand Savings for 13.08 SEER Baseline—Zone 4 | A-135 |
| Table 431: Central Summer Demand Savings for 12.44 SEER Baseline—Zone 4 | A-138 |

| | |
|---|-------|
| Table 432: Central Summer Demand Savings for 10.0 SEER Early Retirement Baseline—Zone 4..... | A-141 |
| Table 433: Central Summer Demand Savings for 14.0 SEER Baseline—Zone 5..... | A-144 |
| Table 434: Central Summer Demand Savings for 13.08 SEER Baseline—Zone 5..... | A-144 |
| Table 435: Central Summer Demand Savings for 12.44 SEER Early Retirement Baseline—Zone 5..... | A-147 |
| Table 436: Central Summer Demand Savings for 10.0 SEER Early Retirement Baseline—Zone 5..... | A-150 |
| Table 437: Central Winter Demand Savings for 8.2 HSPF Baseline—Zone 1..... | A-153 |
| Table 438: Central Winter Demand Savings for 7.7 HSPF Baseline—Zone 1..... | A-156 |
| Table 439: Central Winter Demand Savings for 6.8 HSPF Baseline—Zone 1..... | A-159 |
| Table 440: Central Winter Demand Savings for 3.412 HSPF Baseline—Zone 1..... | A-162 |
| Table 441: Central Winter Demand Savings for 8.2 HSPF Baseline—Zone 2..... | A-165 |
| Table 442: Central Winter Demand Savings for 7.7 HSPF Baseline—Zone 2..... | A-168 |
| Table 443: Central Winter Demand Savings for 6.8 HSPF Baseline—Zone 2..... | A-171 |
| Table 444: Central Winter Demand Savings for 3.412 HSPF Baseline—Zone 2..... | A-174 |
| Table 445: Central Winter Demand Savings for 8.2 HSPF Baseline—Zone 3..... | A-177 |
| Table 446: Central Winter Demand Savings for 7.7 HSPF Baseline—Zone 3..... | A-180 |
| Table 447: Central Winter Demand Savings for 6.8 HSPF Baseline—Zone 3..... | A-183 |
| Table 448: Central Winter Demand Savings for 3.412 HSPF Baseline—Zone 3..... | A-186 |
| Table 449: Central Winter Demand Savings for 8.2 HSPF Baseline—Zone 4..... | A-189 |
| Table 450: Central Winter Demand Savings for 7.7 HSPF Baseline—Zone 4..... | A-192 |
| Table 451: Central Winter Demand Savings for 6.8 HSPF Baseline—Zone 4..... | A-195 |
| Table 452: Central Winter Demand Savings for 3.412 HSPF Baseline—Zone 4..... | A-198 |
| Table 453: Central Winter Demand Savings for 8.2 HSPF Baseline—Zone 5..... | A-201 |
| Table 454: Central Winter Demand Savings for 7.7 HSPF Baseline—Zone 5..... | A-204 |
| Table 455: Central Winter Demand Savings for 6.8 HSPF Baseline—Zone 5..... | A-207 |
| Table 456: Central Winter Demand Savings for 3.412 HSPF Baseline—Zone 5..... | A-210 |
| Table 457: Mini-Split Energy Savings (Heating kWh) for 8.2 HSPF Baseline—Zone 1..... | B-1 |
| Table 458: Mini-split Energy Savings (Heating kWh) for 7.7 HSPF Baseline—Zone 1..... | B-4 |
| Table 459: Mini-split Energy Savings (Heating kWh) for 6.8 HSPF Baseline—Zone 1..... | B-7 |
| Table 460: Mini-split Energy Savings (Heating kWh) for 3.412 HSPF Baseline—Zone 1..... | B-10 |
| Table 461: Mini-split Energy Savings (Heating kWh) for 8.2 HSPF Baseline—Zone 2..... | B-13 |
| Table 462: Mini-split Energy Savings (Heating kWh) for 7.7 HSPF Baseline—Zone 2..... | B-16 |
| Table 463: Mini-split Energy Savings (Heating kWh) for 3.412 HSPF Baseline—Zone 2..... | B-22 |
| Table 464: Mini-split Energy Savings (Heating kWh) for 8.2 HSPF Baseline—Zone 3..... | B-25 |

| | |
|---|-------|
| Table 465: Mini-split Energy Savings (Heating kWh) for 7.7 HSPF Baseline—Zone 3 | B-28 |
| Table 466: Mini-split Energy Savings (Heating kWh) for 6.8 HSPF Baseline—Zone 3 | B-31 |
| Table 467: Mini-split Energy Savings (Heating kWh) for 3.412 HSPF Baseline—Zone 3 | B-34 |
| Table 468: Mini-Split Energy Savings (Heating kWh) for 8.2 HSPF Baseline—Zone 4..... | B-37 |
| Table 469: Mini-Split Energy Savings (Heating kWh) for 7.7 HSPF Baseline—Zone 4..... | B-40 |
| Table 470: Mini-Split Energy Savings (Heating kWh) for 6.8 HSPF Baseline—Zone 4..... | B-43 |
| Table 471: Mini-Split Energy Savings (Heating kWh) for 3.412 HSPF Baseline—Zone 4..... | B-46 |
| Table 472: Mini-Split Energy Savings (Heating kWh) for 8.2 HSPF Baseline—Zone 5..... | B-49 |
| Table 473: Mini-Split Energy Savings (Heating kWh) for 7.7 HSPF Baseline—Zone 5..... | B-52 |
| Table 474: Mini-Split Energy Savings (Heating kWh) for 6.8 HSPF Baseline—Zone 5..... | B-55 |
| Table 475: Mini-Split Energy Savings (Heating kWh) for 3.412 HSPF Baseline—Zone 5..... | B-58 |
| Table 476: Mini-Split Winter Demand Savings for 8.2 HSPF Baseline—Zone 1 | B-62 |
| Table 477: Mini-Split Winter Demand Savings for 7.7 HSPF Baseline—Zone 1 | B-65 |
| Table 478: Mini-Split Winter Demand Savings for 6.8 HSPF Baseline—Zone 1 | B-68 |
| Table 479: Mini-Split Winter Demand Savings for 3.412 HSPF Baseline—Zone 1 | B-71 |
| Table 480: Mini-Split Winter Demand Savings for 8.2 HSPF Baseline—Zone 2..... | B-74 |
| Table 481: Mini-Split Winter Demand Savings for 7.7 HSPF Baseline—Zone 2..... | B-77 |
| Table 482: Mini-Split Winter Demand Savings for 6.8 HSPF Baseline—Zone 2..... | B-80 |
| Table 483: Mini-Split Winter Demand Savings for 3.412 HSPF Baseline—Zone 2..... | B-83 |
| Table 484: Mini-Split Winter Demand Savings for 8.2 HSPF Baseline—Zone 3..... | B-86 |
| Table 485: Mini-Split Winter Demand Savings for 7.7 HSPF Baseline—Zone 3..... | B-89 |
| Table 486: Mini-Split Winter Demand Savings for 6.8 HSPF Baseline—Zone 3..... | B-92 |
| Table 487: Mini-Split Winter Demand Savings for 3.412 HSPF Baseline—Zone 3..... | B-95 |
| Table 488: Mini-Split Winter Demand Savings for 8.2 HSPF Baseline—Zone 4..... | B-98 |
| Table 489: Mini-Split Winter Demand Savings for 7.7 HSPF Baseline—Zone 4..... | B-101 |
| Table 490: Mini-Split Winter Demand Savings for 6.8 HSPF Baseline—Zone 4..... | B-104 |
| Table 491: Mini-Split Winter Demand Savings for 3.412 HSPF Baseline—Zone 4..... | B-107 |
| Table 492: Mini-Split Winter Demand Savings for 8.2 HSPF Baseline—Zone 5..... | B-110 |
| Table 493: Mini-Split Winter Demand Savings for 7.7 HSPF Baseline—Zone 5..... | B-113 |
| Table 494: Mini-Split Winter Demand Savings for 6.8 HSPF Baseline—Zone 5..... | B-116 |
| Table 495: Mini-Split Winter Demand Savings for 3.412 HSPF Baseline—Zone 5..... | B-119 |

Acknowledgments

The Technical Reference Manual is maintained by the Public Utility Commission of Texas' independent evaluation, measurement, and verification (EM&V) team led by Tetra Tech. This version of the Texas Technical Reference Manual was primarily developed from program documentation and measure savings calculators used by the Texas Electric Utilities and their Energy Efficiency Services Providers (EESPs) to support their energy efficiency efforts, and original source material from petitions filed with the Public Utility Commission of Texas by the utilities, their consultants and EESPs such as Frontier Energy (TXu 1-904-705), ICF, CLEAResult, and Nexant. Portions of the Technical Reference Manual are copyrighted 2001-2017 by the Electric Utility Marketing Managers of Texas (EUMMOT), while other portions are copyrighted 2001-2018 by Frontier Energy. Certain technical content and updates were added by the EM&V team to provide further explanation and direction as well as a consistent structure and level of information.

TRM Technical Support

Technical support and questions can be emailed to the EM&V project manager, Lark.Lee@tetrattech.com, and the PUCT, Therese.Harris@puc.texas.gov.

1 INTRODUCTION

This volume of the TRM contains the deemed savings for residential measures that have been approved for use in Texas by the Public Utility Commission of Texas (PUCT). This volume includes instructions regarding various savings calculators and reference sources of the information. TRM ~~v9.0~~ v9.0 serves as a centralized source of deemed savings values. Where appropriate, Measurement and Verification (M&V) methods by measure category are noted for informational purposes only regarding the basis of projected and claimed savings.

Table 1~~Table 4~~ provides an overview of the residential measures contained within this Program Year (PY) ~~2021-2022~~ TRM 89.0 Volume 2 and the types of deemed savings estimates available for each one. There are five types of deemed savings estimates identified:

- *Point estimates* that provided a single deemed savings value correspond to a single measure or type of technology.
- *Deemed saving tables* that provide energy and peak savings as a function of size, capacity, building type, efficiency level, or other inputs.
- *Savings algorithms* that require specified primary inputs that must be gathered on site and the identification of default inputs where primary data could not be collected. In many cases, these algorithms are provided as references to deemed savings tables, point estimates, or calculator explanations.
- *Calculators* are used by different utilities and implementers to calculate energy savings for different measures. In many cases, there are several different calculators available for a single measure. Sometimes their background calculators are similar, and in other cases, estimates can vary greatly between each calculator.
- *M&V methods* are also used for some measures to calculate savings in the event that standard equipment is not used, or the specified building types do not apply. For some of these measures, both a simplified M&V approach and a full M&V approach may be allowed by the utility. M&V methods as a source of claimed and projected savings are noted for informational purposes only.

Please consult Volume 1: Overview and User Guide, Section 5: Structure and Content, for details on the organization of the measure templates presented in this volume.

Table 1. Residential Deemed Savings by Measure Category

| Measure category | Measure description | Point estimate | Deemed savings tables | Savings algorithm | Calculator | M&V | TRM 89.0 update |
|------------------|---|----------------|-----------------------|-------------------|------------|-----|--|
| <u>Lighting</u> | ENERGY STAR® omni-directional LED lamps | - | - | X | - | - | Defined-Updated midstream methodology and added path for fixtures, clarified default wattages by lumen range |
| | ENERGY STAR® specialty | - | - | X | - | - | Defined-Updated midstream methodology and clarified default wattages by lumen and |

| Measure category | Measure description | Point baseline | Deemed savings tables | Savings algorithm | Calculator | M&V | 6.0 update |
|------------------|---------------------------|------------------------------|-----------------------|-------------------|------------|-----|---|
| | and directional LED lamps | | | | | | added path for fixtures, range. Updated specialty lamps baselines. |

| Measure category | Measure description | Point of measurement | Deemed savings tables | Savings algorithm | Calculator | M&V |
|------------------|---|----------------------|-----------------------|-------------------|------------|-----|
| HVAC | Air conditioner or heat pump tune-up | - | - | X | - | - |
| | Duct sealing | - | - | X | - | X |
| | Ground source heat pumps | - | X | X | - | - |
| | Central air conditioners and heat pumps | - | X | - | - | - |
| | Mini-split air conditioners and heat pumps | - | X | - | - | - |
| | Large capacity split system and single-package air conditioners and heat pumps | - | - | X | - | - |
| | Packed terminal heat pumps | - | - | X | - | - |
| | Room air conditioners | - | - | X | - | - |
| | Updated EUL reference. Updated coincidence factors | - | - | - | - | - |
| | Updated EUL reference. Updated eligibility and documentation requirements for electric heat resistance heat | - | - | - | - | - |

| Measure category | Measure description | Point distribution | Deemed savings tables | Savings algorithm | Calculator | M&V |
|-------------------|--|--------------------|-----------------------|-------------------|------------|-----|
| Building envelope | ENERGY STAR® connected thermostats | - | X | - | - | - |
| | Smart thermostat load management | - | X | - | - | - |
| | Evaporative Cooling | - | X | - | - | - |
| | Air infiltration | - | X | - | - | X |
| | Ceiling insulation | - | X | - | - | - |
| | Attic encapsulation | - | X | - | - | - |
| | | | | | | |
| | functional. Clarified early retirement age eligibility. | | | | | |
| | Provided guidance about emergency heat settings and updated EUL reference. Added clarification to prevent double counting of savings with smart thermostat load management measure. No revision. | | | | | |
| | Added clarification to prevent double counting of savings with smart thermostat load management measure. Updated description and tracking requirements. | | | | | |
| | Updated EUL reference. No revision. | | | | | |
| | Updated savings calculation example and EUL reference. Reduced leakage cap. updated documentation requirements. Updated eligibility to only L/H/TR. Added space heat adjustment factor and electric resistance. | | | | | |
| | Updated savings tables for < R-5 baseline category. Clarified application of adjustment factors for space heating and cooling. Updated savings tables. Added space heat adjustment factor and electric resistance documentation requirement. | | | | | |
| | Updated savings tables for < R-5 baseline category. Clarified application of adjustment factors for space heating and cooling. Updated savings tables. Added space heat adjustment factor and electric resistance documentation requirement. | | | | | |
| | Updated savings tables for < R-5 baseline category. Clarified application of adjustment factors for space heating and cooling. Updated savings tables. Added space heat adjustment factor and electric resistance documentation requirement. | | | | | |

| Measure category | Measure description | Point estimate (v9.0) | Deemed savings tables | Savings algorithm | Calculator | M&V | v9.0 update |
|------------------------|---|-----------------------|-----------------------|-------------------|------------|----------|--|
| | Wall insulation | - | X | - | - | - | No revision. Added space heat adjustment factor and electric resistance documentation requirement. |
| | Floor insulation | - | X | - | - | - | No revision. Added space heat adjustment factor and electric resistance documentation requirement. |
| | ENERGY STAR® windows | - | X | - | - | - | No revision. Added space heat adjustment factor and electric resistance documentation requirement. |
| | <u>ENERGY STAR® low-E storm windows</u> | | <u>X</u> | <u>-</u> | <u>-</u> | <u>-</u> | <u>v9.0 origin</u> |
| | Solar screens | - | X | - | - | - | Updated EUL reference. Added space heat adjustment factor and electric resistance documentation requirement. |
| | Cool roofs | - | X | - | - | - | Updated EUL reference. Updated savings tables. Added space heat adjustment factor and electric resistance documentation requirement. |
| Domestic water heating | Faucet aerators | - | - | X | - | - | Updated EUL reference. Updated coincidence factors. |
| | Low-flow showerheads | - | - | X | - | - | Updated EUL reference. Added new savings category and updated coincidence factors. |
| | Water heater pipe insulation | - | - | X | - | - | Updated EUL reference. Updated ambient temperatures. |
| | Water heater tank insulation | - | - | X | - | - | Updated EUL reference. Updated ambient temperatures. |
| | Water heater installation-electric tankless and fuel substitution | - | - | X | - | - | Updated EUL reference. Clarified HPWH baseline for tanks sizes over 55 gal. Updated algorithms to refer to UEF. |

| Measure category | Measure description | Point estimate (EUI) | Deemed savings tables | Savings algorithm | Calculator | M&V | 2020 update |
|------------------|--|----------------------|-----------------------|-------------------|------------|-----|--|
| | Heat pump water heaters | - | X | - | - | - | <u>Clarified baseline condition. Confirmed ENERGY STAR® qualified product listing still does not contain a significant number of products with low or very small usage patterns. Added new construction eligibility.</u> |
| | Solar water heaters | - | X | - | - | - | <u>Updated EUL reference. Updated algorithms and coincidence factors.</u> |
| | Showerhead temperature sensitive restrictor valves | -- | -- | X | -- | -- | <u>Updated EUL reference and restricted measure to electric DHW. Updated coincidence factors.</u> |
| | Tub spout and showerhead temperature-sensitive restrictor valves | -- | -- | X | -- | -- | <u>Updated EUL reference and restricted measure to electric DHW. Updated coincidence factors.</u> |

| Measure category | Measure description | Point estimate | Deemed savings tables | Savings algorithm | Calculator | M&V | 2.0 update |
|------------------|--|------------------------------|-----------------------|-------------------|------------|-----|--|
| Appliances | ENERGY STAR® ceiling fans | - | - | X | - | - | No revision |
| | ENERGY STAR® clothes washers | - | X | - | - | - | <u>General reference checks and text edits. Updated deemed savings tables to match savings algorithms and ENERGY STAR® calculator. No revision</u> |
| | ENERGY STAR® clothes dryers | - | X | - | - | - | No revision |
| | ENERGY STAR® dishwashers | - | X | - | - | - | No revision |
| | ENERGY STAR® refrigerators | - | - | X | - | X | Updated early retirement age eligibility |
| | ENERGY STAR® freezers | - | X | - | - | - | Updated early retirement age eligibility |
| | ENERGY STAR® pool pumps | -- | -- | X | -- | -- | <u>Updated EUL reference and tracking requirements. Incorporated ENERGY STAR® version 2.0 updated deemed savings</u> |
| | ENERGY STAR® Air purifiers | - | X | - | - | - | <u>Updated EUL reference. No revision</u> |
| | Advanced power strips | - | X | - | - | - | <u>Updated savings with current coincidence factors. No revision</u> |
| | ENERGY STAR® Electric vehicle supply equipment | - | X | - | - | - | <u>Updated tracking requirements. Updated deemed savings tables</u> |
| | Refrigerator/ freezer recycling | X | - | X | - | - | <u>No revision. Updated baseline energy consumption</u> |

2 RESIDENTIAL MEASURES

2.1 RESIDENTIAL: LIGHTING

2.1.1 ENERGY STAR® Omni-Directional LED Lamps Measure Overview

TRM Measure ID: R-LT-OD

Market Sector: Residential

Measure Category: Lighting

Applicable Building Types: Single-family, multifamily; manufactured

Fuels Affected: Electricity

Decision/Action Type(s): Retrofit, new construction

Program Delivery Type(s): Prescriptive and direct install

Deemed Savings Type: Deemed savings calculation

Savings Methodology: Engineering algorithms and estimates

Measure Description

This measure provides a method for calculating savings for the replacement of an incandescent lamp with an ENERGY STAR®-qualified omni-directional LED lamp¹ in a residential application. Using ANSI C79.1-2002 nomenclature, the applicable omni-directional LED lamp types are A, BT, P, PS, S, and T.²

Eligibility Criteria

Customer eligibility to be awarded these deemed savings is at the discretion of the utility for different program and customer types. See program-specific manuals to determine customer eligibility.

¹ According to ENERGY STAR® omni-directional LED products "...shall have an even distribution of luminous intensity (candelas) within the 0° to 135° zone (vertically axially symmetrical). Luminous intensity at any angle within this zone shall not differ from the mean luminous intensity for the entire 0° to 135° zone by more than 20 percent. At least 5 percent of total flux (lumens) must be emitted in the 135° - 180° zone. Distribution shall be vertically symmetrical as measured in three vertical planes at 0°, 45°, and 90°."

http://www.energystar.gov/ia/partners/product_specs/program_reqs/Integral_LED_Lamps_Program_Requirements.pdf

² ENERGY STAR®-qualified product listing: <https://www.energystar.gov/productfinder/product/certified-light-bulbs/results>.

These savings values rely on usage patterns specific to both indoor and outdoor applications. In lieu of collecting lamp location, a default weighting of 90.5% indoor and 9.5% outdoor may be assumed.³

New homes must exceed the lighting equipment requirements of the current state building code (IECC 2015) to be eligible for prescriptive lighting savings.

Fixtures with integrated LEDs may be eligible under this measure using a modified baseline.

Baseline Condition

The baseline is assumed to be the first-tier Energy Independence and Security Act of 2007 (EISA)-mandated maximum wattage for a general service or standard incandescent or halogen lamp (see Table 2). Baseline wattages should be adjusted as EISA regulations dictate higher efficiency standards. A potential second-tier EISA baseline adjustment was scheduled to go into effect beginning January 2020. At that time, general service lamps would need to comply with a 45 lumen-per-watt efficacy standard. However, the Department of Energy (DOE) issued a definition for general service lamps on September 5, 2019, concluding that “no backstop energy conservation has been imposed.”⁴ Therefore, no additional baseline adjustment will be imposed starting in 2020. However, standard practice must also be considered in determining an appropriate baseline for this measure. To account for a rapidly changing market, measure life assumptions have been reduced as described later in this measure.

Table 2. ENERGY STAR® Omni-Directional LEDs—EISA Baselines⁵

| Minimum lumens | Maximum lumens | Incandescent equivalent wattage Pre-EISA 2007 | 1 st tier EISA 2007 (W _{max}) |
|----------------|----------------|---|--|
| 310 | 740 | 40 | 29 |
| 750 | 1,040 | 60 | 43 |
| 1,050 | 1,480 | 75 | 53 |
| 1,490 | 2,600 | 100 | 72 |

New construction applications use the same baselines; however, savings can only be claimed for efficient lighting installed above the minimum amount required by code. Current code dictates 75% high-efficacy lighting. Therefore, if 100% of installed lighting is high-efficacy, savings can be claimed for the remaining 25% of installed lamps.

³ 2015 U.S. Lighting Market Characterization, Department of Energy. November 2017. Table 4.11. https://www.energy.gov/sites/prod/files/2017/12/f46/lmc2015_nov17.pdf.

⁴ “Energy Conservation Program: Definition for General Service Lamps”, Department of Energy. 9/5/2019. <https://www.federalregister.gov/documents/2019/09/05/2019-18940/energy-conservation-program-definition-for-general-service-lamps>.

⁵ ~~In new ENERGY STAR® lighting standards effective September 2014, lumen bins associated with incandescent wattages have been assigned that do not align with those set out in EISA 2007. Due to the likelihood of continuing sell-through of existing ENERGY STAR® lighting and the on-going use of the EISA bin definitions, this TRM maintains the EISA lumen bins for assigning baseline wattage. Future iterations of the Texas TRM, however, may incorporate these new ENERGY STAR® lumen bins for baseline wattage estimates.~~

Due to the variability among fixture types compared to screw-in lamps, qualified fixtures with integrated LEDs should use the rated installed wattage and equivalent wattage, or other approved custom methodology, in lieu of the deemed values outlined in Table 2Table 2. These wattages are available on the ENERGY STAR® certificate and can be used in combination with the deemed savings methodologies provided in this measure.

Table 2. Omni-Directional LEDs—Baseline Wattage⁶

| Minimum lumens | Maximum lumens | Incandescent equivalent wattage | 1 st tier EISA 2007 (W_{Base}) ⁷ | Default W_{Post} ⁸ (if unknown) |
|----------------|----------------|---------------------------------|--|--|
| 250 | 309 | 25 | Exempt | 3.5 |
| 310 | 749 | 40 | 29 | 5.5 |
| 750 | 1,049 | 60 | 43 | 9.0 |
| 1,050 | 1,489 | 75 | 53 | 11.5 |
| 1,490 | 2,600 | 100 | 72 | 15.0 |
| 2,601 | 3,300 | 150 | Exempt ⁹ | 22.5 |

High-Efficiency Condition

LEDs must be ENERGY STAR®-qualified¹⁰ for the relevant lamp shape being installed as outlined in the latest ENERGY STAR® specification.¹¹ Using ANSI C79.1-2002 nomenclature, the applicable omni-directional LED lamp types are A, BT, P, PS, S, and T.

The high-efficiency condition is the wattage of the ~~the~~ replacement lamp.

Energy and Demand Savings Methodology

Savings Algorithms and Input Variables

Wattage reduction is defined as the difference between the wattage of a standard baseline lamp, according to EISA 2007 (see ~~Table 2Table 2~~) and the wattage of a comparable omni-directional LED. An LED is considered comparable to the baseline lamp if they are aligned on the lumen output ranges set out in EISA 2007.

For new construction projects, programs should calculate savings using the methodology in this section for all efficient lamps installed in the home. The program should claim savings for the percentage of installed high-efficacy lamps that exceed the minimum required by code, which is

⁶ Federal standard for General Service Incandescent Lamps (GSILs): https://www1.eere.energy.gov/buildings/appliance_standards/standards.aspx?productid=20.

⁷ If exempt, refer to incandescent equivalent wattage.

⁸ Average rated wattage from ENERGY STAR®-qualified product listing rounded to nearest half-watt: <https://www.energystar.gov/productfinder/product/certified-light-bulbs/results>.

⁹ EISA 2007 specified that this lumen range category was subject to a forthcoming efficiency standard that has not yet been finalized.

¹⁰ ENERGY STAR®-qualified product listing: <https://www.energystar.gov/productfinder/product/certified-light-bulbs/results>.

¹¹ <http://www.energystar.gov/products/certified-products/detail/light-bulbs>.

currently 75% of lamps. For example, if a new home is built with high-efficacy lamps in 85% of the permanently installed fixtures, the program would claim 10% of the total calculated savings.

Energy Savings

Annual energy (kWh) savings are calculated as follows.

$$\Delta kWh = \frac{(W_{base,FF} - W_{post})}{1000} \times Hours \times ISR \times IEF_E$$

Equation 1

Where:

- $W_{post}(base,FF)$ = Baseline wattage corresponding with the lumen output of the purchased LED lamp for the year purchased/installed. Reduced baselines are provided for EISA-compliant lamps in ~~Table 2~~ Table 2.
- W_{post} = Actual wattage of LED purchased/installed (if unknown, use default wattages from Table 2)
- HOU = Average hours of use per year = 803 hours (for interior/exterior applications calculated based on an average daily usage of 2.2 hours per day¹²)
- IEF_E = Interactive Effects Factor to account for cooling energy savings and heating energy penalties associated with lighting power reductions (see Table 3)
- ISR = In-service Rate, the percentage of incentivized units that are installed and in use (rather than removed, stored, or burnt-out) to account for units incentivized but not operating = 0.97¹³

¹² The average daily usage of 2.2 hours per day is a blended value for indoor and outdoor lamps. Source: Evaluation of 2008 Texas 'Make Your Mark' Statewide CFL Program Report. Frontier Energy. June 2009.

¹³ Dimetrosky, S., Parkinson, K. and Lieb, N., "Residential Lighting Evaluation Protocol – The Uniform Methods Project: Methods for Determining Energy Efficiency Savings for Specific Measures." January 2015. ISR for upstream programs, including storage lamps installed within four years of purchase. <http://energy.gov/sites/prod/files/2015/02/f19/UMPCchapter21-residential-lighting-evaluation-protocol.pdf>.

Table 3. Omni-Directional LEDs Interactive Effects for Cooling Energy Savings and Heating Energy Penalties¹⁴

| IEF _E | | | | | |
|---------------------------------------|----------------|----------------|----------------|----------------|----------------|
| Heating/cooling type* | Climate zone 1 | Climate zone 2 | Climate zone 3 | Climate zone 4 | Climate zone 5 |
| Gas heat with AC | 1.06 | 1.13 | 1.17 | 1.15 | 1.12 |
| Gas heat with no AC | 1.00 | 1.00 | 1.00 | 1.00 | 1.00 |
| Heat pump | 0.91 | 1.00 | 1.05 | 1.11 | 0.97 |
| Electric resistance heat with AC | 0.65 | 0.80 | 0.90 | 1.00 | 0.75 |
| Electric resistance heat with no AC | 0.57 | 0.69 | 0.76 | 0.83 | 0.65 |
| No heat with AC | 1.06 | 1.13 | 1.17 | 1.15 | 1.12 |
| Unconditioned space | 1.00 | 1.00 | 1.00 | 1.00 | 1.00 |
| Heating/cooling unknown ¹⁵ | 0.88 | 0.98 | 1.04 | 1.07 | 0.95 |

* IEF for homes with no AC is most appropriate for customers with evaporative cooling or room air conditioners.

Demand Savings

Summer and winter demand savings are determined by applying a coincidence factor associated with each season.

$$\Delta kW_{summer} = \frac{(W_{base,FF} - W_{post})}{1000} \times CF_{summer} \times ISR \times IEF_{D,summer}$$

Equation 2

$$\Delta kW_{winter} = \frac{(W_{base,FF} - W_{post})}{1000} \times CF_{winter} \times ISR \times IEF_{D,winter}$$

Equation 3

¹⁴ Extracted from BEopt energy models used to estimate savings for envelope measures. Referencing the EISA baseline table, the typical lumen output was determined by taking the midpoint for the 60-watt equivalent lamp (900 lm), which was assumed to be the most typical installation. The resulting lumens were divided by the default wattage for incandescents (43 W), CFLs (13 W), and LEDs (10 W) resulting in an assumed efficacy for incandescents (21 lm/W), CFLs (70 lm/W), and LEDs (90 lm/W). IEF values were calculated using the following formula: $1 + \text{HVAC}_{savings} / \text{Lighting}_{savings}$.

¹⁵ Calculated using IEFs from Cadmus report, weighted using TMY CDD and HDD for Texas, and adjusted to exclude 16 percent outdoor lighting except for upstream defaults. Cadmus report: Cadmus. Entergy Energy-Efficiency Portfolio Evaluation Report 2013 Program Year. Prepared for Entergy Arkansas, Inc. March 14, 2014. Docket No. 07-082-TF.

Where:

CF = Coincidence Factor (see Table 4)

IEF_D = Interactive Effects Factor to account for cooling demand savings or heating demand penalties associated with lighting power reductions (see Table 5 Table 5)

Table 4. Omni-Directional LEDs —Coincidence Factors¹⁶

| Season | Climate Zone 1: Amarillo | Climate Zone 2: Dallas | Climate Zone 3: Houston | Climate Zone 4: Corpus Christi | Climate Zone 5: El Paso |
|--------|-----------------------------|---------------------------|----------------------------|-----------------------------------|----------------------------|
| Summer | 0.060 | 0.053 | 0.063 | 0.059 | 0.032 |
| Winter | 0.275 | 0.232 | 0.199 | 0.263 | 0.358 |

Table 5. Omni-Directional LEDs—Interactive Effects Factor for Cooling Demand Savings and Heating Demand Penalties¹⁷

| $IEF_{D,summer}$ | | | | | |
|---------------------------------------|----------------|----------------|----------------|----------------|----------------|
| Heating/cooling type* | Climate zone 1 | Climate zone 2 | Climate zone 3 | Climate zone 4 | Climate zone 5 |
| Gas heat with AC | 1.45 | 1.33 | 1.68 | 1.23 | 1.44 |
| Gas heat with no AC | 1.00 | 1.00 | 1.00 | 1.00 | 1.00 |
| Heat pump | 1.45 | 1.33 | 1.68 | 1.23 | 1.44 |
| Electric resistance heat with AC | 1.45 | 1.33 | 1.68 | 1.23 | 1.44 |
| Electric resistance heat with no AC | 1.00 | 1.00 | 1.00 | 1.00 | 1.00 |
| No heat with AC | 1.45 | 1.33 | 1.68 | 1.23 | 1.44 |
| Unconditioned space | 1.00 | 1.00 | 1.00 | 1.00 | 1.00 |
| Heating/cooling unknown ¹⁸ | 1.39 | 1.28 | 1.58 | 1.20 | 1.38 |

¹⁶ See Volume 1

¹⁷ Refer to Table 3Table 4.

¹⁸ Ibid.

| IEF _{D,winter} | | | | | |
|---------------------------------------|----------------|----------------|----------------|----------------|----------------|
| Heating/cooling type* | Climate zone 1 | Climate zone 2 | Climate zone 3 | Climate zone 4 | Climate zone 5 |
| Gas heat with AC | 0.98 | 0.98 | 0.98 | 0.98 | 0.98 |
| Gas heat with no AC | 1.00 | 1.00 | 1.00 | 1.00 | 1.00 |
| Heat pump | 0.71 | 0.67 | 0.65 | 0.74 | 0.81 |
| Electric resistance heat with AC | 0.44 | 0.36 | 0.38 | 0.42 | 0.52 |
| Electric resistance heat with no AC | 0.44 | 0.36 | 0.38 | 0.42 | 0.52 |
| No heat with AC | 0.98 | 0.98 | 0.98 | 0.98 | 0.98 |
| Unconditioned space | 1.00 | 1.00 | 1.00 | 1.00 | 1.00 |
| Heating/cooling unknown ¹⁹ | 0.76 | 0.72 | 0.73 | 0.75 | 0.80 |

* IEF for homes with no AC is most appropriate for customers with evaporative cooling or room air conditioners.

Upstream/Midstream Program Assumptions

All general service lamps with an equivalent wattage of 100 W or lower distributed through upstream or midstream programs should calculate savings using a combination of residential and non-residential savings methodologies with ~~85-95~~ percent of savings allocated to the residential sector and the remaining ~~15~~ five percent of savings allocated to the commercial sector.^{20 24} While only summer demand savings are specified for the commercial sector, winter demand savings are allowed for the portion of savings allocated to the residential sector.

Table 7. Midstream Assumptions by Lamp Type²²

Deemed Energy Savings Tables

There are no lookup tables available for this measure. See engineering algorithms in the previous section for calculating energy and demand savings.

Deemed Summer Demand Savings Tables

There are no lookup tables available for this measure. See engineering algorithms in the previous section for calculating energy and demand savings.

¹⁹ Ibid.

²⁰ Weighting assumptions based on statewide evaluator review of LED purchasing behavior for similar program designs as referenced in the 2018 EM&V upstream lighting memo.

²⁴ Weighting assumptions based on review of 2015 U.S. Lighting Market Characterization, Table 4.1- Residential LEDs make up 80-84% of total general purpose and reflector lamp inventory, respectively. https://www.energy.gov/sites/prod/files/2017/12/f46/lmc2015_nov17.pdf.

²² Commercial weighting based on 2012 CBECS and 2014 MECS.

Deemed Winter Demand Savings Tables

There are no lookup tables available for this measure. See engineering algorithms in the previous section for calculating energy and demand savings.

Claimed Peak Demand Savings

Refer to Volume 1, Section 4 for further details on peak demand savings and methodology.

Additional Calculators and Tools

Not applicable.

Measure Life and Lifetime Savings

Historically, the average measure life is based upon the rated lamp life of the LED. The measure life assumes an average use of 2.2 hours per day based on blended usage for indoor/outdoor applications and applies a 0.85 degradation factor to indoor/outdoor LEDs.

$$EUL_{Total} = \frac{Rated\ Life \times DF}{HOU \times 365.25}$$

Equation 4

Where:

| | | |
|-------------------|---|--|
| <i>Rated Life</i> | = | <i>10,000 hours, 12,000 hours, 15,000 hours, or 20,000 hours, as specified by the manufacturer. If unknown, assume a 10,000-hour lifetime.</i> ²³ |
| <i>DF</i> | = | <i>0.85 degradation factor</i> ²⁴ |
| <i>HOU</i> | = | <i>2.2 hours per day</i> ²⁵ |

However, to account for a rapidly changing market, standard practice dictates that measure life assumptions be reduced to approximate the point at which the residential lighting market has been fully transformed to high-efficiency lamps. Due to market uncertainty in response to a recent rule issued by the Department of Energy, a simplified approach to claim half of the more conservative 16-year EUL will be implemented during the 2020 program year, resulting in an 8-year EUL. This assumption will be reviewed annually to account for current market trends.

²³ Minimum lifetime requirement under ENERGY STAR® Lamps Specification V2.1, effective January 2, 2017.
<https://www.energystar.gov/sites/default/files/ENERGY%20STAR%20Lamps%20V2.1%20Final%20Specification.pdf>.

²⁴ ENERGY STAR® CFL Third Party Testing and Verification Off-the-Shelf CFL Performance: Batch 3. Figure 27, p. 47.

²⁵ The average daily usage of 2.2 hours per day is a blended value for indoor and outdoor lamps. Source: Evaluation of 2008 Texas 'Make Your Mark' Statewide CFL Program Report. Frontier Energy. June 2009.

Based on an expected delay in market adoption among certain customer bases, this measure life will be extended to 10 years for programs targeting low-income and hard-to-reach customers.

Table 6. ENERGY STAR® Omni-Directional LEDs—Estimated Useful Life

| Range of rated measure life (hours) | Assumed rated measure life (hours) | Rated product lifetime (years) | Standard baseline measure life (years) | Low-income baseline measure life (years) |
|-------------------------------------|------------------------------------|--------------------------------|--|--|
| ≤ 17,500 | 15,000 | 16 | 8 | 10 |
| > 17,500 | 20,000 | 20* | 8 | 10 |

* Measure life capped at 10 years. EUL may be deemed at 8 years in lieu of documenting the customer baseline.

Program Tracking Data and Evaluation Requirements

Primary inputs and contextual data that should be specified and tracked by the program database to inform the evaluation and apply the savings properly are:

- Climate zone
- Number of LEDs installed
- Wattage of each replacement LED
- Lumen output of each replacement LED
- Manufacturer-rated lifetime of each replacement LED in hours
- Heating system type (gas, electric resistance, heat pump)
- Cooling system type (air conditioner, evaporative, none)
- Location of replacement lamp (conditioned, unconditioned, or outdoor); only required when not assuming default weighting
- Proof of purchase – with date of purchase and quantity
- Alternative: representative photos of replacement units or another pre-approved method of installation verification
- ENERGY STAR® certificate matching replacement model number
- Alternative: another pre-approved method of certification (e.g., LM-79, LM-80, TM-21 ISTMT lap reports)
- For new construction projects only, these data points must be gathered for all permanently installed fixtures in the home to document the percentage that are high-efficacy.

References and Efficiency Standards

Petitions and Rulings

Not applicable.

Relevant Standards and Reference Sources

- Energy Independence and Security Act of 2007
- ENERGY STAR® specifications for LED lamps

Document Revision History

Table 7. Residential Omni-Directional LED Lamps Revision History

| TRM version | Date | Description of change |
|-------------|----------------|---|
| v3.0 | 4/10/2015 | TRM v3.0 origin. |
| v3.1 | 11/05/2015 | TRM v3.1 update. Modification of in-service rate, revision of interactive effects factors to reflect indoor-specific values for additional heating and cooling equipment types. Provided default input assumptions for upstream lighting programs. Capped estimated measure life. |
| v3.1 | 3/28/2016 | TRM v3.1 March revision. Updated summer and winter coincidence factors. |
| v4.0 | 10/10/2016 | TRM v4.0 update. Updated IEF values and useful life estimates. |
| v5.0 | 10/2017 | TRM v5.0 update. Updated EUL algorithm to account for baseline change beginning in 2021. Included language to deem EUL. |
| v6.0 | 11/2018 | TRM v6.0 update. Updated useful life estimates. Updated interactive effects factors. |
| v7.0 | 10/2019 | TRM v7.0 update. Removed dual baseline and updated useful life estimates. Added invoice and certificate requirements. Added option for new construction savings. |
| v8.0 | 10/2020 | TRM v8.0 update. Defined midstream methodology and clarified default wattages by lumen range. |
| <u>v9.0</u> | <u>10/2021</u> | <u>TRM v9.0 update. Updated midstream methodology and added path for fixtures.</u> |

2.1.2 ENERGY STAR® Specialty and Directional LED Lamps Measure Overview

TRM Measure ID: R-LT-SD

Market Sector: Residential

Measure Category: Lighting

Applicable Building Types: Single-family, multifamily, manufactured

Fuels Affected: Electricity

Decision/Action Type(s): Retrofit, new construction

Program Delivery Type(s): Prescriptive and direct install

Deemed Savings Type: Deemed savings calculation

Savings Methodology: Engineering algorithms and estimates

Measure Description

This measure provides a method for calculating savings for replacement of an incandescent or halogen reflector or decorative lamp with an ENERGY STAR®-qualified LED lamp in a residential application. These lamps include reflectors, G-shape lamps, T-shape lamps, B, BA, CA, F G16-1/2, G25, G30, S, or M14 lamps.²⁶

Eligibility Criteria

Customer eligibility to be awarded these deemed savings is at the discretion of the utility for different program and customer types. See program-specific manuals to determine customer eligibility.

These savings values rely on usage patterns specific to both indoor and outdoor applications. In lieu of collecting lamp location, a default weighting of 90.5% indoor and 9.5% outdoor may be assumed.²⁷

New homes must exceed the lighting equipment requirements of the current state building code (IECC 2015) to be eligible for prescriptive lighting savings.

Fixtures with integrated LEDs may be eligible under this measure using a modified baseline.

²⁶ <http://www.energystar.gov/products/certified-products/detail/light-bulbs>.

²⁷ 2015 U.S. Lighting Market Characterization, Department of Energy. November 2017. Table 4.11. https://www.energy.gov/sites/prod/files/2017/12/f46/lmc2015_nov17.pdf.

Baseline Condition

The baseline wattage will be determined based on the bulb shape of the installed lamp, as outlined below. New construction applications use the same baselines; however, savings can only be claimed for efficient lighting installed above the minimum amount required by code. Current code dictates 75% high-efficacy lighting. Therefore, if 100% of installed lighting is high-efficacy, savings can be claimed for the remaining 25% of installed lamps.

Due to the variability among fixture types compared to screw-in lamps, qualified fixtures with integrated LEDs should use the rated installed wattage and equivalent wattage, or other approved custom methodology, in lieu of the deemed values outlined in this section. These wattages are available on the ENERGY STAR[®] certificate and can be used in combination with the deemed savings methodologies provided in this measure.

Some baseline conditions for specialty LEDs are affected by EISA and/or a DOE 2009 ruling on incandescent reflector lamps (IRLs). Based on the shape, lumen output, and/or wattage-equivalent of the installed lamp, the appropriate baseline shall be determined from one of the following categories. Appropriate baseline wattages are presented in ~~Table 8~~ ~~Table 8~~ through ~~Table 10~~ ~~Table 10~~. If a baseline cannot be determined using these tables, the following guidelines may be used to determine appropriate default baseline wattage:

- Non-reflector lamps, affected by EISA 2007: using the rated lumen output of the installed LED, determine the appropriate first-tier EISA baseline default wattage from ~~Table 8~~ ~~Table 8~~
- Non-reflector lamps, not affected by EISA 2007: ENERGY STAR[®] rated equivalent wattage of installed LED
- Reflector lamps affected by the DOE ruling in 2009 on IRLs: using the rated lumen output of the installed LED, determine the appropriate first-tier EISA baseline default wattage from ~~Table 10~~ ~~Table 10~~
- Reflector lamps not affected by the DOE ruling in 2009 on IRLs: ENERGY STAR[®] rated equivalent wattage of installed LED

EISA Standards: Baseline for Non-Reflector Lamps

EISA-Affected²⁸

EISA-affected bulbs are:

- G-shape lamps with a diameter less than 5 inches
- T-shape lamps greater than 40 watts or with a length of 10 inches or less
- B, BA, CA, F G16-1/2, G25, G30, S, or M14 lamps greater than 40 watts

²⁸ Energy Independence and Security Act of 2007, Subtitle B – Lighting Energy Efficiency, Section 321 Efficient Light Bulbs. <https://www.govinfo.gov/content/pkg/BILLS-110hr6enr/pdf/BILLS-110hr6enr.pdf>.

Table 8. Specialty/Directional LEDs—General Service Non-Reflector Baseline Wattage²⁹

| Minimum lumens | Maximum lumens | Incandescent equivalent wattage | 1 st tier EISA 2007 (W _{Base}) ³⁰ | Default W _{Post} ³¹ (if unknown) |
|----------------|----------------|---------------------------------|---|--|
| 250 | 309 | 25 | Exempt | 3.5 |
| 310 | 749 | 40 | 29 | 5.5 |
| 750 | 1,049 | 60 | 43 | 9.0 |
| 1,050 | 1,489 | 75 | 53 | 11.5 |
| 1,490 | 2,600 | 100 | 72 | 15.0 |
| 2,601 | 3,300 | 150 | Exempt ³² | 22.5 |

EISA-Exempt³³

EISA-exempt bulbs are:

- Appliance lamps, black light lamps, bug lamps, colored lamps, infrared lamps, left-hand thread lamps, marine lamps, marine signal service lamps, mine service lamps, plant light lamps, reflector lamps, rough service lamps, shatter-resistant lamps, sign service lamps, silver bowl lamps, showcase lamps, 3-way incandescent lamps, and vibration service lamps
- G-shape lamp with a diameter of 5 inches or more
- T-shape lamp of 40 watts or less or a length of more than 10 inches
- B, BA, CA, F, G16-1/2, G25, G30, S, or M14 lamp of 40 watts or less³⁴

²⁹ Federal standard for General Service Incandescent Lamps (GSILs): https://www1.eere.energy.gov/buildings/appliance_standards/standards.aspx?productid=20.

³⁰ If exempt, refer to incandescent equivalent wattage.

³¹ Average rated wattage from ENERGY STAR®-qualified product listing rounded to nearest half-watt: <https://www.energystar.gov/productfinder/product/certified-light-bulbs/results>.

³² EISA 2007 specified that this lumen range category was subject to a forthcoming efficiency standard that has not yet been finalized.

³³ Energy Independence and Security act of 2007 (EISA 2007), <https://www.govinfo.gov/content/pkg/PLAW-110publ140/pdf/PLAW-110publ140.pdf>.

³⁴ <https://www.lightingfacts.com/Library/Content/FAQs/EISA>.

Table 9. Specialty/Directional LEDs—Decorative Non-Reflector Baseline Wattage³⁵

| Lamp Type | Minimum Lumens | Maximum Lumens | W _{Base} | Default W _{Post} ³⁶ (if unknown) |
|--|----------------|----------------|-------------------|--|
| 3-Way | 250 | 349 | 25 | 3.0 |
| | 350 | 499 | 40 | 5.0 |
| | 500 | 849 | 60 ³⁷ | 8.0 |
| | 850 | 1,199 | 75 ³⁸ | 10.5 |
| | 1,200 | 1,999 | 100 | 14.5 |
| | 2,000 | -- | 150 | 22.0 |
| G-shape with diameter ≥ 5 inches ³⁹ | -- | -- | -- | -- |
| Decorative (B, BA, CA, F, S, T) | 120 | 159 | 15 ⁴⁰ | 1.5 |
| | 160 | 299 | 25 | 2.5 |
| | 300 | 499 | 40 | 4.5 |
| | 500 | -- | 60 | 5.5 |

DOE Standards for Incandescent Reflector Lamps (IRLs): Baseline for Reflector Lamps

DOE-Ruling-Affected⁴¹

Certain types of incandescent reflector bulbs are affected by a DOE 2009 ruling on reflector lamps. Products affected by the IRL ruling are:

- R, PAR, ER, BR, BPAR lamps
- BR and ER lamps rated at more than 50 watts
- Reflector lamps between 2.25" (R18) and 2.75" (R22) in diameter
- 40-205 Watt incandescent PAR lamps

³⁵ Federal standard for General Service Incandescent Lamps (GSILs):

https://www1.eere.energy.gov/buildings/appliance_standards/standards.aspx?productid=20.

³⁶ Average rated wattage from ENERGY STAR®-qualified product listing rounded to nearest half-watt:

<https://www.energystar.gov/productfinder/product/certified-light-bulbs/results>.

³⁷ No products for this equivalent wattage are available on the ENERGY STAR®-qualified product listing. Lumen range for this row is split evenly and default wattage is interpolated between the available categories.

³⁸ Ibid.

³⁹ G-shape lamps are not included because there were very few ENERGY STAR®-qualified products with a diameter of 5 inches or more. For these products, use the equivalent and rated wattages from the ENERGY STAR® certification.

⁴⁰ The 15-watt equivalent category only applies to lamps with a candelabra base.

⁴¹ Federal standard for Incandescent Reflector Lamps (IRLs):

https://www1.eere.energy.gov/buildings/appliance_standards/standards.aspx?productid=23.

The baseline wattage can be determined according to the lumen range of the installed lamp (see Table 10 ~~Table 10~~).

DOE-Ruling-Exempt⁴²

The DOE 2009 ruling standards do not apply to the following types of IRLs:

- IRLs rated at 50 watts or less that are ER30, BR30, BR40, or ER40 lamps
- IRLs rated at 65 watts that are BR30, BR40, or ER40 lamps
- R20 IRLs rated 45 watts or less.

Table 10. Specialty/Directional LEDs—Reflector Baseline Wattage⁴³

| Lamp type ⁴⁴ | Minimum lumens | Maximum lumens | W_{Base} | Default W_{Post} , ⁴⁵ (if unknown) |
|-------------------------|----------------|----------------|------------|---|
| BR30 | 500 | 649 | 50 | 7.5 |
| | 650 | 949 | 65 | 9.0 |
| | 950 | 1,099 | 75 | 12.5 |
| | 1,100 | 1,199 | 85 | 12.5 |
| | 1,200 | 1,399 | 90 | 16.5 |
| | 1,400 | -- | 100 | 18.0 |
| BR40 | 650 | 924 | 65 | 10.0 |
| | 925 | 1,099 | 75 | 12.5 |
| | 1,100 | 1,299 | 85 | 14.0 |
| | 1,300 | 1,399 | 90 | 15.5 |
| | 1,400 | 1,749 | 100 | 17.0 |
| | 1,750 | 2,174 | 120 | 22.0 |
| | 2,175 | -- | 150 | 22.0 |
| MR16/ MRX16 | 250 | 349 | 20 | 4.5 |
| | 350 | 449 | 35 | 6.0 |
| | 450 | 499 | 42 | 6.5 |
| | 500 | 574 | 50 | 7.0 |
| | 575 | -- | 75 | 8.5 |

⁴² Ibid.

⁴³ Federal standard for Incandescent Reflector Lamps (IRLs): https://www1.eere.energy.gov/buildings/appliance_standards/standards.aspx?productid=23.

⁴⁴ Lamp types excluded from this table were not included on the ENERGY STAR®-qualified product listing. For missing lamp types, refer to the equivalent and rated wattages from the ENERGY STAR® certification.

⁴⁵ Average rated wattage from ENERGY STAR®-qualified product listing rounded to nearest half-watt: <https://www.energystar.gov/productfinder/product/certified-light-bulbs/results>.

| Lamp type ⁴⁴ | Minimum lumens | Maximum lumens | W_{Base} | Default W_{Post} ⁴⁵ (if unknown) |
|-----------------------------|----------------|----------------|------------|---|
| PAR16 | 250 | 349 | 20 | 3.5 |
| | 350 | 424 | 35 | 4.5 |
| | 425 | 499 | 40 | 5.5 |
| | 500 | 574 | 45 | 5.5 |
| | 575 | 649 | 50 | 6.5 |
| | 650 | 749 | 60 | 6.5 |
| | 750 | -- | 75 | 7.5 |
| PAR20 | 400 | 800 | 50 | 7.0 |
| PAR30/ PAR30L/ PAR30S | 500 | 899 | 50 | 11.5 |
| | 900 | -- | 75 | 11.5 |
| PAR38 | 500 | 649 | 45 | 7.0 |
| | 650 | 799 | 75 | 14.0 |
| | 800 | 999 | 90 | 14.0 |
| | 1,000 | 1,499 | 100 | 14.5 |
| | 1,500 | 1,999 | 120 | 16.0 |
| | 2,000 | -- | 150 | 19.0 |
| R14 | 250 | 299 | 25 | 4.0 |
| R16 | 300 | 399 | 30 | 4.0 |
| | 400 | 474 | 40 | 5.5 |
| | 475 | 549 | 45 | 6.0 |
| | 550 | -- | 50 | 7.0 |
| R20 | 300 | 449 | 30 | 4.5 |
| | 450 | 524 | 45 | 6.0 |
| | 525 | 649 | 50 | 7.0 |
| | 650 | 899 | 60 | 9.0 |
| | 900 | 1,399 | 75 | 12.5 |
| | 1,400 | -- | 100 | 14.0 |

High- Efficiency Condition

LEDs must be ENERGY STAR[®]-qualified⁴⁶- for the relevant lamp shape being removed as outlined in the latest ENERGY STAR[®] specification.⁴⁷ These lamps include reflectors, G-shape lamps, T-shape lamps, B, BA, CA, F G16-1/2, G25, G30, S, or M14 lamps.

The high-efficiency condition is the wattage of the replacement lamp.

Energy and Demand Savings Methodology

Savings Algorithms and Input Variables

Wattage reduction is defined as the difference between the wattage of a specialty baseline lamp and the wattage of a directional or specialty LED.

For new construction projects, programs should calculate savings using the methodology in this section for all efficient lamps installed in the home. The program should claim savings for the percentage of installed high-efficacy lamps that exceed the minimum required by code, which is currently 75% of lamps. For example, if a new home is built with high-efficacy lamps in 85% of the permanently installed fixtures, the program would claim 10% of the total calculated savings.

Energy Savings Algorithms

For EISA-affected lamps only, annual energy (kWh) savings are calculated as follows,

$$\Delta kWh = \frac{(W_{base,FT} - W_{post})}{1000} \times HOU \times ISR \times IEF_E$$

Equation 5

For EISA-exempt lamps and reflectors (both DOE-ruling-exempt and DOE-ruling-affected), annual energy (kWh) savings are calculated as follows.

$$\Delta kWh = \frac{(W_{base} - W_{post})}{1000} \times HOU \times ISR \times IEF_E$$

Equation 6

⁴⁶ ENERGY STAR[®]-qualified product listing: <https://www.energystar.gov/productfinder/product/certified-light-bulbs/results>.

⁴⁷ ENERGY STAR[®] specification: <http://www.energystar.gov/products/certified-products/detail/light-bulbs>.

Where:

$W_{base,FT}$ = First-tier EISA baseline wattage corresponding with the lumen output of the purchased LED lamp for the year purchased/installed. First-tier EISA baseline lamp wattage provided in Table 8 ~~under the column "1st Tier EISA 2007 (W_{base})~~.

W_{base} = EISA-exempt specialty lamp or a DOE-ruling-exempt reflector, use the appropriate baseline wattage from Table 9 and Table 10. (If a DOE-ruling-affected IRL, use the wattages provided in Table 10.)

Table 10. Specialty/Directional LEDs—Reflector Baseline Wattage

| Lamp | Minimum lumens | Maximum lumens | W_{base} | Default W_{base} or |
|------|-------------------|-------------------|------------|-----------------------------|
| BR30 | 500 | 649 | 50 | 7.5 |
| | 650 | 949 | 65 | 9.0 |
| | 950 | 1,099 | 75 | 12.5 |
| | 1,100 | 1,199 | 85 | 12.5 |
| | 1,200 | 1,399 | 90 | 16.5 |
| | 1,400 | — | 100 | 18.0 |
| BR40 | 650 | 924 | 65 | 10.0 |
| | 925 | 1,099 | 75 | 12.5 |
| | 1,100 | 1,299 | 85 | 14.0 |
| | 1,300 | 1,399 | 90 | 15.5 |
| | 1,400 | 1,749 | 100 | 17.0 |
| | 1,750 | 2,174 | 120 | 22.0 |
| | 2,175 | — | 150 | 22.0 |

| Lamp | Minimum lumens | Maximum lumens | WBase | Default WPost GF |
|--------|-------------------|-------------------|-------|------------------------|
| MR16/ | 250 | 349 | 20 | 4.5 |
| MRX16 | 350 | 449 | 35 | 6.0 |
| | 450 | 499 | 42 | 6.5 |
| | 500 | 574 | 50 | 7.0 |
| | 575 | -- | 75 | 8.5 |
| | PAR16 | 250 | 349 | 20 |
| PAR16 | 350 | 424 | 35 | 4.5 |
| | 425 | 499 | 40 | 5.5 |
| | 500 | 574 | 45 | 5.5 |
| | 575 | 649 | 50 | 6.5 |
| | 650 | 749 | 60 | 6.5 |
| | 750 | -- | 75 | 7.5 |
| | PAR20 | 400 | 800 | 50 |
| PAR30/ | 500 | 899 | 50 | 11.5 |
| PAR30 | 900 | -- | 75 | 11.5 |
| PAR30 | | | | |
| PAR38 | 500 | 649 | 45 | 7.0 |
| | 650 | 799 | 75 | 14.0 |

| Lamp | Minimum lumens | Maximum lumens | WBase | Default WPost GF |
|------|-------------------|-------------------|-------|------------------------|
| | 800 | 999 | 90 | 14.0 |
| | 1,000 | 1,499 | 100 | 14.5 |
| | 1,500 | 1,999 | 120 | 16.0 |
| | 2,000 | — | 150 | 19.0 |
| R14 | 250 | 299 | 25 | 4.0 |
| R16 | 300 | 399 | 30 | 4.0 |
| | 400 | 474 | 40 | 5.5 |
| | 475 | 549 | 45 | 6.0 |
| | 550 | — | 50 | 7.0 |
| R20 | 300 | 449 | 30 | 4.5 |
| | 450 | 524 | 45 | 6.0 |
| | 525 | 649 | 50 | 7.0 |
| | 650 | 899 | 60 | 9.0 |
| | 900 | 1,399 | 75 | 12.5 |
| | 1,400 | — | 100 | 14.0 |

$$W_{post} = \text{Actual wattage of LED purchased/installed}$$

- HOU = Average hours of use per year = 803 hours (for interior/exterior applications calculated based on an average daily usage of 2.2 hours per day⁴⁸)
- IEF_E = Interactive Effects Factor to account for cooling energy savings and heating energy penalties associated with lighting power reductions (see Table 11).
- ISR = In-service Rate, the percentage of incentivized units that are installed and in use (rather than removed, stored or burnt-out) to account for units incentivized but not operating = 0.97⁴⁹

Table 11. Specialty/Directional LEDs—Interactive Effects for Cooling Energy Savings and Heating Energy Penalties⁵⁰

| Heating/cooling type* | IEF_E | | | | |
|---------------------------------------|----------------|----------------|----------------|----------------|----------------|
| | Climate zone 1 | Climate zone 2 | Climate zone 3 | Climate zone 4 | Climate zone 5 |
| Gas Heat with AC | 1.06 | 1.13 | 1.17 | 1.15 | 1.12 |
| Gas Heat with no AC | 1.00 | 1.00 | 1.00 | 1.00 | 1.00 |
| Heat Pump | 0.91 | 1.00 | 1.05 | 1.11 | 0.97 |
| Electric Resistance Heat with AC | 0.65 | 0.80 | 0.90 | 1.00 | 0.75 |
| Electric Resistance Heat with no AC | 0.57 | 0.69 | 0.76 | 0.83 | 0.65 |
| No heat with AC | 1.06 | 1.13 | 1.17 | 1.15 | 1.12 |
| Unconditioned Space | 1.00 | 1.00 | 1.00 | 1.00 | 1.00 |
| Heating/Cooling Unknown ⁵¹ | 0.88 | 0.98 | 1.04 | 1.07 | 0.95 |

* IEF for homes with no AC is most appropriate for customers with evaporative cooling or room air conditioners.

⁴⁸ The average daily usage of 2.2 hours per day is a blended value for indoor and outdoor lamps. Source: Evaluation of 2008 Texas 'Make Your Mark' Statewide CFL Program Report. Frontier Energy (formerly Associates). June 2009.

⁴⁹ Dimetrosky, S., Parkinson, K. and Lieb, N. "Residential Lighting Evaluation Protocol – The Uniform Methods Project: Methods for Determining Energy Efficiency Savings for Specific Measures." January 2015. ISR for upstream programs, including storage lamps installed within four years of purchase. <http://energy.gov/sites/prod/files/2015/02/f19/UMPChapter21-residential-lighting-evaluation-protocol.pdf>.

⁵⁰ Extracted from BEopt energy models used to estimate savings for envelope measures. Referencing the EISA baseline table, the typical lumen output was determined by taking the midpoint for the 60 watt equivalent lamp (900 lm), which was assumed to be the most typical installation. The resulting lumens were divided by the default wattage for incandescents (43 W), CFLs (13 W), and LEDs (10 W) resulting in an assumed efficacy for incandescents (21 lm/W), CFLs (70 lm/W), and LEDs (90 lm/W). IEF values were calculated using the following formula: $1 + HVAC_{savings}/Lighting_{savings}$.

⁵¹ Calculated using IEFs from Cadmus report, weighted using TMY CDD and HDD for Texas, and adjusted to exclude 16 percent outdoor lighting except for upstream defaults. Cadmus report: Cadmus. Energy-Efficiency Portfolio Evaluation Report 2013 Program Year. Prepared for Entergy Arkansas, Inc. March 14, 2014. Docket No. 07-082-TF.

Demand Savings Algorithms

Summer and winter demand savings are determined by applying a coincidence factor associated with each season.

$$\Delta kW_{summer} = \frac{(W_{base,FT} - W_{post})}{1000} \times CF_{summer} \times ISR \times IEF_{D,summer}$$

Equation 7

$$\Delta kW_{winter} = \frac{(W_{base,FT} - W_{post})}{1000} \times CF_{winter} \times ISR \times IEF_{D,winter}$$

Equation 8

For EISA-exempt lamps and reflectors (both DOE-ruling-exempt and DOE-ruling-affected), peak demand (kW) savings are not calculated using the two-tiered system. Instead, peak demand (kW) savings are calculated using one algorithm, depending on the season of the savings.

$$\Delta kW_{summer} = \frac{(W_{base} - W_{post})}{1000} \times CF_{summer} \times ISR \times IEF_{D,summer}$$

Equation 9

$$\Delta kW_{winter} = \frac{(W_{base} - W_{post})}{1000} \times CF_{winter} \times ISR \times IEF_{D,winter}$$

Equation 10

Where:

- CF = Coincidence Factor (Table 12)
- IEF_D = Interactive Effects Factor to account for cooling demand savings or heating demand penalties associated with lighting power reductions (see Table 13)

Table 12. Specialty/Directional LEDs—Coincidence Factors⁵²

| Season | Climate zone 1: Amarillo | Climate zone 2: Dallas | Climate zone 3: Houston | Climate zone 4: Corpus Christi | Climate zone 5: El Paso |
|--------|-----------------------------|---------------------------|----------------------------|-----------------------------------|----------------------------|
| Summer | 0.060 | 0.053 | 0.063 | 0.059 | 0.032 |
| Winter | 0.275 | 0.232 | 0.199 | 0.263 | 0.358 |

Table 13. Specialty and Directional LEDs—Interactive Effects Factor for Cooling Demand Savings and Heating Demand Penalties⁵³

| IEF _{D,summer} | | | | | |
|-------------------------|---------|---------|---------|---------|---------|
| Heating/cooling type* | Climate | Climate | Climate | Climate | Climate |
| | | | | | |

⁵² See Volume 1

⁵³ Refer to [Table 11](#) and [Table 13](#).

| | zone 1 | zone 2 | zone 3 | zone 4 | zone 5 |
|---------------------------------------|----------------|----------------|----------------|----------------|----------------|
| Gas Heat with AC | 1.45 | 1.33 | 1.68 | 1.23 | 1.44 |
| Gas Heat with no AC | 1.00 | 1.00 | 1.00 | 1.00 | 1.00 |
| Heat Pump | 1.45 | 1.33 | 1.68 | 1.23 | 1.44 |
| Electric Resistance Heat with AC | 1.45 | 1.33 | 1.68 | 1.23 | 1.44 |
| Electric Resistance Heat with no AC | 1.00 | 1.00 | 1.00 | 1.00 | 1.00 |
| No heat with AC | 1.45 | 1.33 | 1.68 | 1.23 | 1.44 |
| Unconditioned Space | 1.00 | 1.00 | 1.00 | 1.00 | 1.00 |
| Heating/Cooling Unknown ⁵⁴ | 1.39 | 1.28 | 1.58 | 1.20 | 1.38 |
| IEF _{D,winter} | | | | | |
| Heating/cooling type* | Climate zone 1 | Climate zone 2 | Climate zone 3 | Climate zone 4 | Climate zone 5 |
| Gas Heat with AC | 0.98 | 0.98 | 0.98 | 0.98 | 0.98 |
| Gas Heat with no AC | 1.00 | 1.00 | 1.00 | 1.00 | 1.00 |
| Heat Pump | 0.71 | 0.67 | 0.65 | 0.74 | 0.81 |
| Electric Resistance Heat with AC | 0.44 | 0.36 | 0.38 | 0.42 | 0.52 |
| Electric Resistance Heat with no AC | 0.44 | 0.36 | 0.38 | 0.42 | 0.52 |
| No heat with AC | 0.98 | 0.98 | 0.98 | 0.98 | 0.98 |
| Unconditioned Space | 1.00 | 1.00 | 1.00 | 1.00 | 1.00 |
| Heating/Cooling Unknown ⁵⁵ | 0.76 | 0.72 | 0.73 | 0.75 | 0.80 |

* IEF for homes with no AC is most appropriate for customers with evaporative cooling or room air conditioners.

Upstream/Midstream Program Assumptions

All general service, decorative, and reflector lamps with an equivalent wattage of 100 W or lower distributed through upstream or midstream programs should calculate savings using a combination of residential and non-residential savings methodologies with 85-95 percent of savings allocated to the residential sector and the remaining 15-five percent of savings allocated to the commercial sector.⁵⁶ While only summer demand savings are specified for the commercial sector, winter demand savings are allowed for the portion of savings allocated to the residential sector.

⁵⁴ Calculated using IEFs from Cadmus report, weighted using TMY CDD and HDD for Texas, and adjusted to exclude 16 percent outdoor lighting except for upstream defaults. Cadmus report: Cadmus. Entergy Energy-Efficiency Portfolio Evaluation Report 2013 Program Year. Prepared for Entergy Arkansas, Inc. March 14, 2014. Docket No. 07-082-TF.

⁵⁵ Calculated using IEFs from Cadmus report, weighted using TMY CDD and HDD for Texas, and adjusted to exclude 16 percent outdoor lighting except for upstream defaults. Cadmus report: Cadmus. Entergy Energy-Efficiency Portfolio Evaluation Report 2013 Program Year. Prepared for Entergy Arkansas, Inc. March 14, 2014. Docket No. 07-082-TF.

⁵⁶ Weighting assumptions based on statewide evaluator review of LED purchasing behavior for similar program designs as referenced in the 2018 EM&V upstream lighting memo.

⁵⁷ Weighting assumptions based on review of 2015 U.S. Lighting Market Characterization, Table 4.1. Residential LEDs make up 80-84% of total general-purpose and reflector lamp inventory, respectively. https://www.energy.gov/sites/prod/files/2017/12/f46/lmc2015_nov17.pdf.

Table 16. Specialty/Directional LEDs—Midstream Assumptions by Lamp Type⁶⁸

| General Service Lamp < 100W equivalent | 1,245 | 0.15 | 0.15 | 0.16 | 0.16 | 0.13 |
|---|-------|------|------|------|------|------|
| Directional/Reflector < 100W equivalent | 1,249 | 0.17 | 0.16 | 0.17 | 0.17 | 0.15 |

Deemed Energy Savings Tables

There are no lookup tables available for this measure. See engineering algorithms in the previous section for calculating energy and demand savings.

Deemed Summer Demand Savings Tables

There are no lookup tables available for this measure. See engineering algorithms in the previous section for calculating energy and demand savings.

Deemed Winter Demand Savings Tables

There are no lookup tables available for this measure. See engineering algorithms in the previous section for calculating energy and demand savings.

Claimed Peak Demand Savings

Refer to Volume 1, Section 4 for further details on peak demand savings and methodology.

Additional Calculators and Tools

Not applicable.

Measure Life and Lifetime Savings

Historically, the average measure life is based upon rated lamp life of the LED. The measure life assumes an average use of 2.2 hours per day based on blended usage for indoor/outdoor applications and applies a 0.85 degradation factor to indoor/outdoor LEDs.

$$EUL_{Total} = \frac{Rated\ Life \times DF}{HOU \times 365.25}$$

Equation 11

⁶⁸Commercial weighting based on 2012 CBECS and 2014 MECS.

Where:

- Rated Life* = 10,000 hours, 12,000 hours, 15,000 hours, or 20,000 hours, as specified by the manufacturer. If unknown, assume a 10,000-hour lifetime.⁵⁹
- DF* = 0.85 degradation factor⁶⁰
- HOU* = 2.2 hours per day⁶¹

EISA Compliant Lamps

To account for a rapidly changing market, standard practice dictates that measure life assumptions be reduced to approximate the point at which the residential lighting market has been fully transformed to high-efficiency lamps. Due to market uncertainty in response to a recent rule issued by the Department of Energy, a simplified approach to claim half of the more conservative 16-year EUL will be implemented during the 2020 program year, resulting in an 8-year EUL. This assumption will be reviewed annually to account for current market trends.

Based on an expected delay in market adoption among certain customer bases, this measure life will be extended to 10 years for programs targeting low-income and hard-to-reach customers.

These reductions do not apply to specialty lamps.

Table 14. Specialty/Directional LEDs—Estimated Useful Life

| Range of Rated Measure Life (Hours) | Assumed Rated Measure Life (Hours) | Specialty Measure Life (Years) | If EISA Compliant: | |
|-------------------------------------|------------------------------------|--------------------------------|--|--|
| | | | Standard Baseline Measure Life (Years) | Low-income Baseline Measure Life (Years) |
| ≤ 17,500 | 15,000 | 16 | 8 | 10 |
| > 17,500 | 20,000 | 20* | 8 | 10 |

* Measure life capped at 20 or 10 years depending on the applicable baseline. EUL may be deemed at 16 or 8 years in lieu of collecting manufacturer rated life or documenting customer baseline for EISA compliant lamps.

⁵⁹ Minimum lifetime requirement under ENERGY STAR® Lamps Specification V2.1, effective January 2, 2017. <https://www.energystar.gov/sites/default/files/ENERGY%20STAR%20Lamps%20V2.1%20Final%20Specification.pdf>.

⁶⁰ ENERGY STAR® CFL Third Party Testing and Verification Off-the-Shelf CFL Performance: Batch 3. Figure 27, p. 47.

⁶¹ The average daily usage of 2.2 hours per day is a blended value for indoor and outdoor lamps. Source: Evaluation of 2008 Texas 'Make Your Mark' Statewide CFL Program Report. Frontier Energy (formerly Associates). June 2009.

Program Tracking Data and Evaluation Requirements

Primary inputs and contextual data that should be specified and tracked by the program database to inform the evaluation and apply the savings properly are:

- Climate zone
- Number of LEDs installed
- ANSI C79.1-2002 nomenclature of LED installed (G40, PAR, etc.)
- Baseline and rated wattages of each replacement LED
- Lumen output of each replacement LED
- ~~Wattage of replaced lamp~~
- Manufacturer-rated lifetime of each replacement LED in hours
- Heating system type (gas, electric resistance, heat pump)
- Cooling system type (air conditioner, evaporative cooler, none)
- Location of installed lamp (conditioned, unconditioned, or outdoor); only required when not assuming default weighting
- Baseline calculation methodology (EISA-affected non-reflector, EISA-exempt non-reflector, DOE-ruling-affected reflector, DOE-ruling-exempt reflector, manufacturer-rated equivalent incandescent wattage, or default wattage)
- Proof of purchase – with date of purchase and quantity
 - Alternative: representative photos of installed units or other pre-approved method of installation verification
- ENERGY STAR® certificate matching replacement model number
 - Alternative: other pre-approved method of certification (e.g., LM-79, LM-80, TM-21 ISTMT lap reports)
- For new construction projects only, these data points must be gathered for all permanently installed fixtures in the home to document the percentage that are high-efficacy.

References and Efficiency Standards

Petitions and Rulings

Not applicable.

Relevant Standards and Reference Sources

- Energy Independence and Security Act of 2007
- Energy Conservation Program: Energy Conservation Standards and Test Procedures for General Service Fluorescent Lamps and Incandescent Reflector Lamps, Energy Efficiency and Renewable Energy Office (EERE), 2009
- ENERGY STAR® specifications for LED lamps

Document Revision History

Table 15. Residential Specialty and Directional LED Lamps Revision History

| TRM version | Date | Description of change |
|-------------|------------|---|
| v3.0 | 4/10/2015 | TRM v3.0 origin. |
| v3.1 | 11/05/2015 | TRM v3.1 update. Modification of in-service rate, revision of interactive effects factors to reflect indoor-specific values for additional heating and cooling equipment types. Consolidated default input assumptions for upstream lighting programs. Capped estimated measure life. |
| v3.1 | 3/28/2016 | TRM v3.1 March revision. Updated summer and winter coincidence factors. |
| v4.0 | 10/10/2016 | TRM v4.0 update. Updated IEF values. |
| v5.0 | 10/2017 | TRM v5.0 update. Updated useful life estimates. |
| v6.0 | 11/2018 | TRM v6.0 update. Updated useful life estimates. Updated interactive effects factors. |
| v7.0 | 10/2019 | TRM v7.0 update. Removed dual baseline and updated useful life estimates. Added invoice and certificate requirements. Added option for new construction savings. |
| v8.0 | 10/2020 | TRM v8.0 update. Defined midstream methodology and clarified default wattages by lumen range. Updated specialty lamps baselines. |
| v9.0 | 10/2021 | TRM v9.0 update. Updated midstream methodology and added <u>path for fixtures.</u> |

2.2 RESIDENTIAL: HEATING, VENTILATION, AND AIR CONDITIONING

2.2.1 Air Conditioner or Heat Pump Tune-Ups Measure Overview

TRM Measure ID: R-HV-TU

Market Sector: Residential

Measure Category: HVAC

Applicable Building Types: Single-family, multifamily, manufactured

Fuels Affected: Electricity

Decision/Action Type(s): Retrofit

Program Delivery Type(s): Prescriptive

Deemed Savings Type: Deemed savings calculation

Savings Methodology: Engineering algorithms and estimates

Measure Description

This measure applies to central air conditioners (AC) and heat pumps (HP) of any configuration where all applicable actions from the checklist below are completed. An AC tune-up involves checking, cleaning, adjusting, and resetting the equipment to factory conditions to restore operating efficiencies, on average, closer to as-new performance. This measure applies to all residential applications.

For this measure, the service technician must complete the following tasks according to industry best practices. To properly assess and adjust the refrigerant charge level, the unit must be operating under significant (normal) cooling load conditions. Therefore, this measure may only be performed for energy savings reporting purposes when the outdoor ambient dry bulb temperature is above 75°F, and the indoor return air dry bulb temperature is above 70°F.

Air conditioner inspection and tune-up checklist:⁶²

- Tighten all electrical connections; measure motor voltage and current
- Lubricate all moving parts, including motor and fan bearings
- Inspect and clean the condensate drain
- Inspect controls of the system to ensure proper and safe operation. Check the startup/shutdown cycle of the equipment to assure the system starts, operates, and shuts off properly.
- Clean evaporator and condenser coils

⁶² Based on ENERGY STAR® HVAC Maintenance Checklist.
www.energystar.gov/index.cfm?c=heat_cool_pr_maintenance.

- Clean indoor blower fan components
- Inspect and clean or change air filters; replacement preferred best practice
- Measure airflow via static pressure across the cooling coil and adjust to manufacturers specifications
- Check refrigerant level and adjust to manufacturer specifications
- Check capacitor functionality and capacitance; compare to OEM specifications

Eligibility Criteria

All residential customers are eligible for this measure if they have refrigerated air conditioning 65,000 Btu/hr or less in cooling capacity that has not been serviced in the last 5 years.

Baseline Condition

The baseline is a system with some or all of the following issues:

- Dirty condenser coil
- Dirty evaporator coil
- Dirty blower wheel
- Dirty filter
- Improper airflow
- Incorrect refrigerant charge

The baseline system efficiency should be calculated using the following formulas:

$$EER_{pre} = (1 - EL) \times EER_{post}$$

Equation 12

$$HSPF_{pre} = (1 - EL) \times HSPF_{post}$$

Equation 13

Where:

| | | |
|---------------|---|--|
| EER_{pre} | = | Efficiency of the cooling equipment before tune-up |
| EL | = | Efficiency loss due to dirty coils, blower, filter, improper airflow, and/or incorrect refrigerant charge = 0.05 |
| EER_{post} | = | Deemed cooling efficiency of the equipment after tune-up = 11.2 EER |
| $HSPF_{pre}$ | = | Heating efficiency of the air source heat pump before tune-up |
| $HSPF_{post}$ | = | Deemed heating efficiency of air source heat pumps after tune-up = 7.7 HSPF |

High-Efficiency Condition

After the tune-up, the equipment must be clean with airflows and refrigerant charges adjusted as appropriate and set forth above, with the added specification that refrigerant charge adjustments must be within +/- 3 degrees of target sub-cooling for units with thermal expansion valves (TXV) and +/- 5 degrees of target super heat for units with fixed orifices or capillary tubes.

The efficiency standard, or efficiency after the tune-up, is deemed to be the manufacturer specified energy efficiency ratio (EER) of the existing central air conditioner or heat pump, which has been determined using the following logic and standards. The useful life of an AC unit is 19 years. The useful life of a heat pump is 16 years. Therefore, it is conservatively thought that the majority of existing, functioning units were installed under the federal standard in place between January 23, 2006 and January 1, 2015, which set a baseline of 13 SEER and 7.7 HSPF⁶³. A 13 SEER is equivalent to approximately 11.2 EER⁶⁴ using the conversion developed by Lawrence Berkeley Lab and US DOE: $EER = -0.02 \times SEER^2 + 1.12 \times SEER$.

Energy and Demand Savings Methodology

Savings Algorithms and Input Variables

Savings are based on an assumed efficiency loss factor of 5 percent due to dirty coils, dirty filters, improper airflow, and/or incorrect refrigerant charge.⁶⁵

Energy Savings Algorithms

Heating energy savings are only applicable to heat pumps.

$$Energy\ Savings\ [kWh_{savings}] = kWh_{savings,C} + kWh_{savings,H}$$

Equation 14

$$Energy\ (Cooling)\ [kWh_{savings,C}] = Capacity_C \times \left(\frac{1}{EER_{pre}} - \frac{1}{EER_{post}} \right) \times EFLH_C \times \frac{1\ kW}{1,000\ W}$$

Equation 15

$$Energy\ (Heating)\ [kWh_{savings,H}] = Capacity_H \times \left(\frac{1}{HSPF_{pre}} - \frac{1}{HSPF_{post}} \right) \times EFLH_H \times \frac{1\ kW}{1,000\ W}$$

Equation 16

⁶³ Code specified HSPF from federal standard effective January 23, 2006 through January 1, 2015.

⁶⁴ Code specified 13 SEER from federal standard effective January 23, 2006 through January 1, 2015, converted to EER using $EER = -0.02 \times SEER^2 + 1.12 \times SEER$. National Renewable Energy Laboratory (NREL). "Building America House Simulation Protocols." U.S. Department of Energy. Revised October 2010. <http://www.nrel.gov/docs/fy11osti/49246.pdf>.

⁶⁵ Energy Center of Wisconsin, May 2008; "Central Air Conditioning in Wisconsin, A Compilation of Recent Field Research."

Where:

- $Capacity_C$ = Rated cooling capacity of the equipment based on model number [Btuh] (1 ton = 12,000 Btuh)
- $Capacity_H$ = Rated heating capacity of the equipment based on model number [Btuh] (1 ton = 12,000 Btuh)
- EER_{pre} = Cooling efficiency of the equipment pre-tune-up using Equation 12 [Btuh/W]
- EER_{post} = Cooling efficiency of the equipment after the tune-up [Btuh/W]. Assume 11.2.
- $HSPF_{pre}$ = Heating efficiency of the equipment pre-tune-up using Equation 13 [Btuh/W]
- $HSPF_{post}$ = Heating efficiency of the equipment after the tune-up [Btuh/W]. Assume 7.7.
- $EFLH_{C/H}$ = Cooling/heating equivalent full-load hours for appropriate climate zone [hours]

Table 16. AC/HP Tune-Ups—Equivalent Full Load Cooling/Heating Hours⁶⁶

| Climate zone | EFLH _C | EFLH _H |
|---------------------------|-------------------|-------------------|
| Climate zone 1: Panhandle | 1,142 | 1,880 |
| Climate zone 2: North | 1,926 | 1,343 |
| Climate zone 3: South | 2,209 | 1,127 |
| Climate zone 4: Valley | 2,958 | 776 |
| Climate zone 5: West | 1,524 | 1,559 |

Demand Savings Algorithms

$$\text{Summer Peak Demand } [kW_{Savings,C}] = \text{Capacity} \times \left(\frac{1}{EER_{pre}} - \frac{1}{EER_{post}} \right) \times DF_C \times \frac{1 \text{ kW}}{1,000 \text{ W}}$$

Equation 17

$$\text{Winter Peak Demand } [kW_{Savings,H}] = \text{Capacity} \times \left(\frac{1}{HSPF_{pre}} - \frac{1}{HSPF_{post}} \right) \times DF_H \times \frac{1 \text{ kW}}{1,000 \text{ W}}$$

Equation 18

⁶⁶ ENERGY STAR® Central AC/HP Savings Calculator. April 2009 update.
https://www.energystar.gov/sites/default/files/asset/document/ASHP_Sav_Calc.xls.

Summer and winter demand savings are determined by applying a coincidence factor for each season. Winter peak demand savings are only applicable to heat pumps.

Where:

DF_C = Cooling coincidence factor (see [Table Table 17Table 17](#))

DF_H = Heating coincidence factor (see [Table Table 17Table 17](#))

Table 17. AC/HP Tune-Ups—Coincidence Factors by Climate Zone⁶⁷

| Season | Climate zone 1: Amarillo | Climate zone 2: Dallas | Climate zone 3: Houston | Climate zone 4: Corpus Christi | Climate zone 5: El Paso |
|--------|-----------------------------|---------------------------|----------------------------|-----------------------------------|----------------------------|
| Summer | 0.644 | 0.707 | 0.633 | 0.577 | 0.784 |
| Winter | 0.399 | 0.310 | 0.341 | 0.293 | 0.444 |

Deemed Energy Savings Tables

Applying the above algorithms results in the deemed energy savings per ton in [Table 18Table 18](#). Heating savings are only applicable for heat pumps.

Table 18. AC/HP Tune-Ups—Deemed Energy Savings per Ton

| Climate zone | Cooling kWh saved per ton | Heating kWh saved per ton |
|---------------------------|---------------------------|---------------------------|
| Climate zone 1: Panhandle | 64.4 | 154.2 |
| Climate zone 2: North | 108.6 | 110.2 |
| Climate zone 3: South | 124.6 | 92.4 |
| Climate zone 4: Valley | 166.8 | 63.7 |
| Climate zone 5: West | 85.9 | 127.9 |

Deemed Summer Demand Savings Tables

Applying the above algorithms results in the deemed summer demand savings per ton in [Table 19Table 19](#).

Table 19. AC/HP Tune-Ups—Deemed Summer Demand Savings per Ton

| Climate zone | Summer peak demand kW savings per Ton |
|---------------------------|---------------------------------------|
| Climate zone 1: Panhandle | 0.036 |
| Climate zone 2: North | 0.040 |

⁶⁷ See Volume 1, Section 4.

| Climate zone | Summer peak demand kW savings per Ton |
|------------------------|---------------------------------------|
| Climate zone 3: South | 0.036 |
| Climate zone 4: Valley | 0.033 |
| Climate zone 5: West | 0.044 |

Deemed Winter Demand Savings Tables

Applying the above algorithms results in the deemed winter demand savings per ton in Table 20. Winter peak demand savings are only applicable for heat pumps.

Table 20. AC/HP Tune-Ups—Deemed Winter Demand Savings per Ton

| Climate zone | Winter peak demand kW savings per ton |
|---------------------------|---------------------------------------|
| Climate zone 1: Panhandle | 0.033 |
| Climate zone 2: North | 0.025 |
| Climate zone 3: South | 0.028 |
| Climate zone 4: Valley | 0.024 |
| Climate zone 5: West | 0.036 |

Claimed Peak Demand Savings

Refer to Volume 1, Section 4 for further details on peak demand savings and methodology.

Additional Calculators and Tools

Not applicable.

Measure Life and Lifetime Savings

The estimated useful life (EUL) for a tune-up is five years.⁶⁸

According to the 2014 California Database for Energy Efficiency Resources (DEER), the estimated useful life of cleaning condenser and evaporator coils is three years⁶⁹, and the estimated useful life of refrigerant charge adjustment is ten years.⁷⁰ The other parts of the tune-up checklist are not listed in DEER. Therefore five years is used as the best representation of the entire tune-up.

Program Tracking Data and Evaluation Requirements

Primary inputs and contextual data that should be specified and tracked by the program database to inform the evaluation and apply the savings properly are:

- Climate zone or county
- Manufacturer
- Model Number
- Cooling capacity of the installed unit (tons)
- Heating capacity of the installed unit (algorithm approach only)
- Type of unit (air conditioner, air source heat pump)
- Serial number
- Refrigerant type
- Target superheat or subcooling
- Post tune-up superheat or subcooling
- Amount of refrigerant added or removed
- Static pressures before and after tune-up
- Return and supply dry bulb and wet bulb temperatures
- Before and after tune-up pictures of components illustrating condition change due to cleanings (Note: pictures that include well-placed familiar objects like hand tools often provide a sense of scale and a reference for color/shading comparisons. Pictures of equipment name plates are useful).

⁶⁸ GDS Associates, Inc. (2007). Measure Life Report: Residential and Commercial/Industrial Lighting and HVAC Measures. Prepared for The New England State Program Working Group; Page 1-3, Table 1. https://library.cee1.org/sites/default/files/library/8842/CEE_Eval_MeasureLifeStudyLights&HVACGDS_1Jun2007.pdf.

⁶⁹ 2014 California Database for Energy Efficiency Resources.

⁷⁰ *Ibid*

References and Efficiency Standards

Petitions and Rulings

Not applicable.

Relevant Standards and Reference Sources

Not applicable.

Document Revision History

Table 21. Residential Air Conditioner or Heat Pump Tune-Ups Revision History

| TRM version | Date | Description of change |
|--------------------|-------------|---|
| v4.0 | 10/10/2015 | TRM v4.0 origin. |
| v5.0 | 10/2017 | TRM v5.0 update. No revision. |
| v6.0 | 11/2018 | TRM v6.0 update. No revision. |
| v7.0 | 10/2019 | TRM v7.0 update. No revision. |
| v8.0 | 10/2020 | TRM v8.0 update. Updated coincidence factors. |
| v9.0 | 10/2021 | TRM v9.0 update. Updated EUL reference. |

2.2.2 Duct Sealing Measure Overview

TRM Measure ID: R-HV-DS

Market Sector: Residential

Measure Category: HVAC

Applicable Building Types: Single-family, manufactured

Fuels Affected: Electricity and gas

Decision/Action Type(s): Retrofit

Program Delivery Type(s): Prescriptive

Deemed Savings Type: Look-up tables

Savings Methodology: Building simulation modeling

Measure Description

This measure involves sealing leaks in supply and return ducts of the HVAC distribution systems in homes or converted residences with central air conditioning. The standard approach to estimate savings in this measure is based on the results obtained via pre- and post-leakage testing as defined in this measure. In lieu of leakage testing, savings for eligible duct sealing projects may be claimed using the alternate approach specified in this measure.

Eligibility Criteria

All single-family customers with ducted central refrigerated air conditioning or evaporative cooling are eligible to claim cooling savings for this measure. Customers must have ducted central heating with either a furnace (gas or electric resistance) or a heat pump to claim heating savings. The specified deemed savings are not applicable to multifamily customers or to residences with space (non-central or ducted) air conditioning or heating.

For the standard approach with leakage testing, duct leakage should be assessed following the Building Performance Institute (BPI) standards. Duct leakage testing should not be conducted in homes where either evidence of asbestos or mold is present or suspected due to the age of the home.⁷¹

⁷¹ "Technical Standards for the Building Analyst Professional", Building Performance Institute (BPI), v1/4/12, Page 1 of 17, states:

"Health and Safety: Where the presence of asbestos, lead, mold and/or other potentially hazardous material is known or suspected, all relevant state and federal (EPA) guidelines must be followed to ensure technician and occupant safety. Blower door depressurization tests may not be performed in homes *where there is a risk of asbestos becoming airborne and being drawn into the dwelling.*"
<http://www.bpi.org/sites/default/files/Technical%20Standards%20for%20the%20Building%20Analyst%20Professional.pdf>.

Utility program manuals should be consulted for health and safety considerations related to the implementation of duct efficiency measures and/or testing procedures.

Duct sealing is a residential retrofit measure only and does not apply to new construction.

Baseline Condition

The savings calculation methods for this measure (when implemented with duct leakage testing) are valid up to a maximum pre-installation leakage rate of 35 percent of total fan flow.⁷² For homes with an initial leakage rate greater than 35 percent of total fan flow, savings will be awarded with respect to this cap rather than the initial leakage. Data from nearly 28,000 single-family and mobile home duct blaster tests conducted for duct efficiency improvements in Texas between 2003 and 2006 show that more than 70 percent of all pre-retrofit leakage rates fall below 38 percent total leakage.⁷³

Engineering calculations show that the interior temperature in those settings that exceed 38 percent total leakage would be above the thermally acceptable comfort levels published by ASHRAE in its 2009 Fundamentals publication. The proposed pre-installation leakage limits will help ensure that the deemed savings are an accurate reflection of the program's impacts and that the program focuses its efforts on scenarios where leakage conditions are likely to persist if unaddressed for several years.

Low-income customers⁷⁴ are exempt from the cap limiting the maximum pre-installation leakage rate to 35 percent of total fan flow.

While these baseline criteria were applied in deriving the deemed savings for the alternate approach (without duct leakage testing), it is not necessary to determine the pre-installation leakage rate for projects claiming the alternate deemed savings.

High-Efficiency Condition

Materials used should be long-lasting materials, such as mastics, UL 181A or UL 181B approved foil tape or aerosol-based sealants. Fabric-based duct tape is not allowed.

The selected methodology for estimating duct sealing deemed savings according to the standard approach requires duct leakage-to-outside testing using a combination duct pressurization and house pressurization.

⁷² $Total\ Fan\ Flow = Cooling\ Capacity\ (tons) \times 400\ cfm/ton$

⁷³ Based on data collected by Frontier Energy for investor-owned utilities in Texas.

⁷⁴ Low-income customers are income-eligible customers served through a targeted low-income energy efficiency program as described in 25.181(r). This may also apply to income-eligible customers served through a hard-to-reach program that is also delivered following the guidelines in 25.181(r).
<https://www.puc.texas.gov/agency/rulesnlaws/subrules/electric/25.181/25.181.pdf>.

Duct Leakage Testing (Standard Approach)

Measurements to determine pre-installation and post-installation leakage rates must be performed in accordance with utility-approved procedures. For this measure, leakage-to-outside must be directly measured. The project sponsor shall use the Combination Duct Blaster™ (or equivalent) and blower door method. Prior to beginning any installations, the project sponsor must submit the intended method(s) and may be required to provide the utility with evidence of competency, such as Home Energy Rating System (HERS) or North American Technician Excellence (NATE) certification. Leakage rates must be measured and reported at the average air distribution system operating pressure (25 Pa).⁷⁵

Categorizing Achieved Duct Leakage Reduction (Absent Leakage Testing)

Participating energy efficiency service providers (EESPs) electing not to perform leakage testing should nevertheless provide an estimate of the expected outcome of the leakage reduction work performed: projects should be characterized according to contractor estimation of whether the work required should result in a **low**, **average**, or **high reduction** in duct system leakage. EESPs should take the following considerations into account in assessing the likely leakage reduction achieved in a given project:

- The number and size of repaired leaks
- Leak location: a leak in an attic joint will cause more energy loss than a joint that leaks to conditioned space
- Supply/return: supply-side leaks, particularly in the return air plenum and near the air handling unit can be especially problematic, as they tend to draw additional unconditioned air into the system.

Systems that were not initially very leaky and in which few joints and supply vents were sealed should be characterized as low reduction. Jobs with a typical number of supply vents and joints sealed, and in which the supply air return or the return air plenum were sealed, should be characterized as average reduction. Jobs requiring significant interventions to eliminate large or numerous leaks should be considered high reduction.

The following table provides a guideline for selecting an appropriate leakage category. How the category is determined may fluctuate on a per-home basis.

⁷⁵ See RESNET Technical Committee, Proposed Amendment: Chapter 8 RESNET Standards, 800 RESNET Standard for Performance Testing and Work Scope: Enclosure and Air Distribution Leakage Testing; Section 803.2 and Table 803.1. <https://www.resnet.us/wp-content/uploads/Chapter-Eight-22RESNET-Standard-for-Performance-Testing-and-Work-Scope-Enclosure-and-Air-Distribution-Leakage-Testing22.pdf>.

Table 22. Duct Sealing—Leakage Categorization Guide⁷⁶

| Category | Duct location | Duct insulation value | Leakage characteristics ⁷⁷ | |
|-------------------|--------------------|-----------------------|---------------------------------------|--------------------|
| Low | > 90% Conditioned | > R7 | Some observable leaks | |
| | | | Substantial leaks | |
| | | R4 - R7 | Some observable leaks | |
| | | | Substantial leaks | |
| | | < R4 | Some observable leaks | |
| | | | Substantial leaks | |
| | 50-90% Conditioned | > R7 | Some observable leaks | |
| | | R4 - R7 | Some observable leaks | |
| | | < R4 | Some observable leaks | |
| Average | > 90% Conditioned | > R7 | Catastrophic leaks | |
| | | R4 - R7 | Catastrophic leaks | |
| | | < R4 | Catastrophic leaks | |
| | 50-90% Conditioned | > R7 | Substantial leaks | |
| | | | Catastrophic leaks | |
| | | R4 - R7 | Substantial leaks | |
| | | < R4 | Substantial leaks | |
| | < 50% Conditioned | > R7 | Some observable leaks | |
| | | R4 - R7 | Some observable leaks | |
| | | < R4 | Some observable leaks | |
| | High | 50-90% Conditioned | R4 - R7 | Catastrophic leaks |
| | | | < R4 | Catastrophic leaks |
| < 50% Conditioned | | R4 - R7 | Substantial leaks | |
| | | > R7 | Catastrophic leaks | |
| | | R4 - R7 | Substantial leaks | |
| | | | Catastrophic leaks | |
| | | < R4 | Substantial leaks | |
| | | | Catastrophic leaks | |
| | | | Catastrophic leaks | |

⁷⁶ Based on typical distribution efficiency assumptions from the Building Performance Institute (BPI) Technical Standards for the Heating Professional, November 20, 2007, page 7. <http://www.bpi.org/sites/default/files/Technical%20Standards%20for%20the%20Heating%20Professional.pdf>.

⁷⁷ Catastrophic leaks are defined by BPI as disconnected ducts, missing end-caps, and other catastrophic holes.

Energy and Demand Savings Methodology

Savings may be claimed according to either the standard approach (with duct leakage testing) or the alternate approach, according to the following sections.

Standard Approach (with Duct Leakage Testing)

The annual energy and summer and winter peak demand savings to be claimed according to the standard approach for this measure shall be calculated as a function of the reduction in duct leakage achieved, using the energy and demand savings coefficients from ~~Table 23~~ ~~Table 23~~ through ~~Table 25~~ ~~Table 25~~ for the climate zone in which the project was implemented and the type of heating equipment in the project home.

Savings Algorithms and Input Variables

Calibrated simulation modeling was used to develop these deemed savings, which are expressed as linear functions of the reduction in duct leakage achieved (in CFM₂₅). Specifically, these deemed savings estimates were developed using BEopt 2.6, running EnergyPlus 8.4 as the underlying simulation engine. To model this measure, the prototype home models for each climate zone were modified as follows: the base case duct leakage rate was set to 8 CFM₂₅ per 100 square feet. Results from running the base case model provide estimated hourly energy use for the prototypical home prior to treatment. Post-treatment conditions were simulated by setting the leakage rate to 6 CFM₂₅ per 100 square feet. Results from running the change case model provide estimated hourly energy use for the prototypical home after treatment. A comparison of these two runs provides the deemed savings estimates.

Deemed savings are presented as a function of the CFM₂₅ reduction achieved, as demonstrated by leakage to outside testing using the Combination Duct Blaster™ (or equivalent) and Blower Door method. The kWh and kW per CFM₅₀ values represented by the V_E , V_S , and V_W coefficients are derived by taking the difference between annual energy use and summer and winter peak demand, as estimated by the two model runs and normalizing to the CFM₂₅ reduction achieved.

Deemed Energy Savings Tables

~~Table 23~~ ~~Table 23~~ presents the annual energy savings per CFM₂₅ reduction for a residential duct sealing project. The following formula shall be used to calculate annual energy savings for duct leakage reduction:

$$\text{Deemed Energy Savings (kWh)} = (DL_{pre} - DL_{post}) \times V_E$$

Equation 19

Where:

| | | |
|-------------|---|---|
| DL_{pre} | = | <i>Pre-improvement duct leakage at 25 Pa (cu. ft./min)</i> |
| DL_{post} | = | <i>Post-improvement duct leakage at 25 Pa (cu. ft./min)</i> |
| $V_{E,C}$ | = | <i>Cooling Energy Savings Coefficient in Table 23</i> |
| $V_{E,H}$ | = | <i>Heating Energy Savings Coefficient in Table 23</i> |

Table 23. Duct Sealing—Energy Savings V_E per CFM₂₅ Reduction

| Region | $V_{E,C}$: Cooling savings | | $V_{E,H}$: Heating savings | | |
|-------------------|-----------------------------|---------------------|-----------------------------|---------------------|-----------|
| | Refrigerated air | Evaporative cooling | Gas | Electric resistance | Heat pump |
| Zone 1: Panhandle | 0.82 | 0.21 | 0.07 | 2.75 | 0.71 |
| Zone 2: North | 1.05 | N/A | 0.03 | 1.19 | 0.31 |
| Zone 3: South | 1.23 | N/A | 0.02 | 0.85 | 0.26 |
| Zone 4: Valley | 1.46 | N/A | 0.01 | 0.61 | 0.19 |
| Zone 5: West | 1.20 | 0.38 | 0.03 | 1.44 | 0.37 |

Deemed Summer Demand Savings Tables

[Table 24](#) presents the summer peak demand savings per CFM₂₅ reduction for a residential duct sealing project. The following formula shall be used to calculate deemed summer demand savings for duct leakage reduction:

$$\text{Deemed Summer Demand Savings (kW)} = (DL_{pre} - DL_{post}) \times V_S$$

Equation 20

Where:

- DL_{pre} = Pre-improvement duct leakage at 25 Pa (cu. ft./min)
- DL_{post} = Post-improvement duct leakage at 25 Pa (cu. ft./min)
- V_S = Summer Demand Savings Coefficient in [Table 24](#)

Table 24. Duct Sealing—Summer Demand Savings V_S per CFM₂₅ Reduction

| Region | Summer kW impact per CFM ₂₅ reduction | |
|---------------------------|--|---------------------|
| | Refrigerated air | Evaporative cooling |
| Climate zone 1: Panhandle | 9.28E-04 | 2.29E-04 |
| Climate zone 2: North | 8.47E-04 | N/A |
| Climate zone 3: South | 1.06E-03 | N/A |
| Climate zone 4: Valley | 6.72E-04 | N/A |
| Climate zone 5: West | 7.66E-04 | 1.86E-04 |

Deemed Winter Demand Savings Tables

Table 25 presents the winter peak demand savings per CFM₂₅ reduction for a residential duct sealing project. The following formula shall be used to calculate deemed winter demand savings for duct leakage reduction:

$$\text{Deemed Winter Demand Savings (kW)} = (DL_{pre} - DL_{post}) \times V_W \quad \text{Equation 21}$$

Where:

- DL_{pre} = Pre-improvement duct leakage at 25 Pa (cu. ft./min)
 DL_{post} = Post-improvement duct leakage at 25 Pa (cu. ft./min)
 V_W = Winter Demand Savings Coefficient in Table 25

Table 25. Duct Sealing—Winter Demand Savings V_W per CFM₂₅ Reduction

| Region | kWh impact per CFM ₂₅ reduction | | |
|---------------------------|--|------------|-----------|
| | Gas | Resistance | Heat pump |
| Climate zone 1: Panhandle | 4.38E-06 | 8.49E-04 | 1.46E-04 |
| Climate zone 2: North | 1.22E-06 | 9.96E-04 | 6.98E-04 |
| Climate zone 3: South | 8.60E-06 | 8.61E-04 | 5.02E-04 |
| Climate zone 4: Valley | 1.18E-05 | 6.71E-04 | 4.06E-04 |
| Climate zone 5: West | 6.68E-06 | 2.81E-04 | 6.69E-05 |

Alternate Approach (No Duct Leakage Testing)

The following savings tables are provided for projects implemented without performing leakage testing, accounting for the application of pre-retrofit leakage caps to not hard-to-reach (HTR) projects. The annual energy and summer and winter peak demand savings to be claimed according to the alternate approach for this measure shall be taken from Table 23 through Table 25 for the climate zone in which the project was implemented and the type of heating equipment in the project home.

While savings for multiple duct systems are additive for the standard approach, the following savings are specified per home when using the alternate approach and should not be multiplied by the number of treated duct systems.

NOTE: This approach is only available to programs with an incentive structure that varies by leakage category. Additionally, energy efficiency service providers (EESPs) should not alternate between the standard and alternative approaches during the same program year. Utilities should either restrict all participants within an individual program to one approach or the other, or they should restrict individual EESPs to one approach or the other across all program types.

Hard-to-Reach (HTR) and Targeted Low-Income Programs

Deemed Energy Savings Tables (Alternate Approach)

Climate Zone 1: Panhandle Region

Table 26. Duct Sealing—Climate Zone 1: Panhandle Region—Deemed Annual Energy Savings, HTR Alternate Approach (kWh)

| Category | Assessed leakiness | Cooling savings | | Heating savings | | |
|----------|--------------------|------------------|---------------------|-----------------|---------------------|-----------|
| | | Refrigerated air | Evaporative cooling | Gas | Electric resistance | Heat pump |
| 1 | Low | 204 | 52 | 17 | 685 | 177 |
| 2 | Average | 323 | 83 | 28 | 1,083 | 280 |
| 3 | High | 514 | 132 | 44 | 1,725 | 445 |

Climate Zone 2: North Region

Table 27. Duct Sealing—Climate Zone 2: North Region—Deemed Annual Energy Savings, HTR Alternate Approach (kWh)

| Category | Assessed leakiness | Cooling savings | | Heating savings | | |
|----------|--------------------|------------------|---------------------|-----------------|---------------------|-----------|
| | | Refrigerated air | Evaporative cooling | Gas | Electric resistance | Heat pump |
| 1 | Low | 262 | N/A | 7 | 297 | 77 |
| 2 | Average | 413 | N/A | 12 | 468 | 122 |
| 3 | High | 659 | N/A | 19 | 746 | 194 |

Climate Zone 3: South Region

Table 28. Duct Sealing—Climate Zone 3: South Region—Deemed Annual Energy Savings, HTR Alternate Approach (kWh)

| Category | Assessed leakiness | Cooling savings | | Heating savings | | |
|----------|--------------------|------------------|---------------------|-----------------|---------------------|-----------|
| | | Refrigerated air | Evaporative cooling | Gas | Electric resistance | Heat pump |
| 1 | Low | 307 | N/A | 5 | 212 | 65 |
| 2 | Average | 484 | N/A | 8 | 335 | 102 |
| 3 | High | 771 | N/A | 13 | 533 | 163 |

Climate Zone 4: Valley Region

Table 29. Duct Sealing—Climate Zone 4: Valley Region—Deemed Annual Energy Savings, HTR Alternate Approach (kWh)

| Category | Assessed leakiness | Cooling savings | | Heating savings | | |
|----------|--------------------|------------------|---------------------|-----------------|---------------------|-----------|
| | | Refrigerated air | Evaporative cooling | Gas | Electric resistance | Heat pump |
| 1 | Low | 364 | N/A | 2 | 152 | 47 |
| 2 | Average | 575 | N/A | 4 | 240 | 75 |
| 3 | High | 916 | N/A | 6 | 383 | 119 |

Climate Zone 5: West Region

Table 30. Duct Sealing—Climate Zone 5: West Region—Deemed Annual Energy Savings, HTR Alternate Approach (kWh)

| Category | Assessed leakiness | Cooling savings | | Heating savings | | |
|----------|--------------------|------------------|---------------------|-----------------|---------------------|-----------|
| | | Refrigerated air | Evaporative cooling | Gas | Electric resistance | Heat pump |
| 1 | Low | 299 | 95 | 7 | 359 | 92 |
| 2 | Average | 472 | 150 | 12 | 567 | 146 |
| 3 | High | 753 | 238 | 19 | 903 | 232 |

Deemed Summer Demand Savings Tables (Alternate Approach)

Climate Zone 1: Panhandle Region

Table 31. Duct Sealing—Climate Zone 1: Panhandle Region—Deemed Summer Demand Savings, HTR Alternate Approach (kW)

| Category | Refrigerated air | Evaporative cooling |
|----------|------------------|---------------------|
| Low | 0.23 | 0.06 |
| Average | 0.37 | 0.09 |
| High | 0.58 | 0.14 |

Climate Zone 2: North Region

Table 32. Duct Sealing—Climate Zone 2: North Region—Deemed Summer Demand Savings, HTR Alternate Approach (kW)

| Category | Refrigerated air | Evaporative cooling |
|----------|------------------|---------------------|
| Low | 0.21 | N/A |
| Average | 0.33 | N/A |
| High | 0.53 | N/A |

Climate Zone 3: South Region

Table 33. Duct Sealing—Climate Zone 3: South Region—Deemed Summer Demand Savings, HTR Alternate Approach (kW)

| Category | Refrigerated air | Evaporative cooling |
|----------|------------------|---------------------|
| Low | 0.26 | N/A |
| Average | 0.42 | N/A |
| High | 0.66 | N/A |

Climate Zone 4: Valley Region

Table 34. Duct Sealing—Climate Zone 4: Valley Region—Deemed Summer Demand Savings, HTR Alternate Approach (kW)

| Category | Refrigerated air | Evaporative cooling |
|----------|------------------|---------------------|
| Low | 0.17 | N/A |
| Average | 0.26 | N/A |
| High | 0.42 | N/A |

Climate Zone 5: West Region

Table 35. Duct Sealing—Climate Zone 5: West Region—Deemed Summer Demand Savings, HTR Alternate Approach (kW)

| Category | Refrigerated air | Evaporative cooling |
|----------|------------------|---------------------|
| Low | 0.19 | 0.05 |
| Average | 0.30 | 0.07 |
| High | 0.48 | 0.12 |

Deemed Winter Demand Savings Tables (Alternate Approach)

Climate Zone 1: Panhandle Region

Table 36. Duct Sealing—Climate Zone 1: Panhandle Region—Deemed Winter Demand Savings, HTR Alternate Approach (kW)

| Category | Heating system type | | |
|----------|---------------------|---------------------|-----------|
| | Gas | Electric resistance | Heat pump |
| Low | 0.00 | 0.21 | 0.04 |
| Average | 0.00 | 0.33 | 0.06 |
| High | 0.00 | 0.53 | 0.09 |

Climate Zone 2: North Region

Table 37. Duct Sealing—Climate Zone 2: North Region—Deemed Winter Demand Savings, HTR Alternate Approach (kW)

| Category | Heating system type | | |
|----------|---------------------|---------------------|-----------|
| | Gas | Electric resistance | Heat pump |
| Low | 0.00 | 0.25 | 0.17 |
| Average | 0.00 | 0.39 | 0.27 |
| High | 0.00 | 0.62 | 0.44 |

Climate Zone 3: South Region

Table 38. Duct Sealing—Climate Zone 3: South Region—Deemed Winter Demand Savings, HTR Alternate Approach (kW)

| Category | Heating system type | | |
|----------|---------------------|---------------------|-----------|
| | Gas | Electric resistance | Heat pump |
| Low | 0.00 | 0.21 | 0.13 |
| Average | 0.00 | 0.34 | 0.20 |
| High | 0.01 | 0.54 | 0.31 |

Climate Zone 4: Valley Region

Table 39. Duct Sealing—Climate Zone 4: Valley Region—Deemed Winter Demand Savings, HTR Alternate Approach (kW)

| Category | Heating system type | | |
|----------|---------------------|---------------------|-----------|
| | Gas | Electric resistance | Heat pump |
| Low | 0.00 | 0.17 | 0.10 |
| Average | 0.00 | 0.26 | 0.16 |
| High | 0.01 | 0.42 | 0.25 |

Climate Zone 5: West Region

Table 40. Duct Sealing—Climate Zone 5: West Region—Deemed Winter Demand Savings, HTR Alternate Approach (kW)

| Category | Heating system type | | |
|----------|---------------------|---------------------|-----------|
| | Gas | Electric resistance | Heat pump |
| Low | 0.00 | 0.07 | 0.02 |
| Average | 0.00 | 0.11 | 0.03 |
| High | 0.00 | 0.18 | 0.04 |

All Other Programs

Deemed Energy Savings Tables (Alternate Approach)

Climate Zone 1: Panhandle Region

Table 41. Duct Sealing—Climate Zone 1: Panhandle Region—Deemed Annual Energy Savings, Alternate Approach (kWh)

| Category | Assessed leakiness | Cooling savings | | Heating savings | | |
|----------|--------------------|------------------|---------------------|-----------------|---------------------|-----------|
| | | Refrigerated air | Evaporative cooling | Gas | Electric resistance | Heat pump |
| 1 | Low | 187 | 48 | 16 | 628 | 162 |
| 2 | Average | 300 | 77 | 26 | 1,005 | 259 |
| 3 | High | 428 | 110 | 37 | 1,437 | 371 |

Climate Zone 2: North Region

Table 42. Duct Sealing—Climate Zone 2: North Region—Deemed Annual Energy Savings, Alternate Approach (kWh)

| Category | Assessed leakiness | Cooling savings | | Heating savings | | |
|----------|--------------------|------------------|---------------------|-----------------|---------------------|-----------|
| | | Refrigerated air | Evaporative cooling | Gas | Electric resistance | Heat pump |
| 1 | Low | 240 | N/A | 7 | 272 | 71 |
| 2 | Average | 384 | N/A | 11 | 435 | 113 |
| 3 | High | 549 | N/A | 16 | 622 | 162 |

Climate Zone 3: South Region

Table 43. Duct Sealing—Climate Zone 3: South Region—Deemed Annual Energy Savings, Alternate Approach (kWh)

| Category | Assessed leakiness | Cooling savings | | Heating savings | | |
|----------|--------------------|------------------|---------------------|-----------------|---------------------|-----------|
| | | Refrigerated air | Evaporative cooling | Gas | Electric resistance | Heat pump |
| 1 | Low | 281 | N/A | 5 | 194 | 59 |
| 2 | Average | 449 | N/A | 7 | 310 | 95 |
| 3 | High | 643 | N/A | 10 | 444 | 136 |

Climate Zone 4: Valley Region

Table 44. Duct Sealing—Climate Zone 4: Valley Region—Deemed Annual Energy Savings, Alternate Approach (kWh)

| Category | Assessed leakiness | Cooling savings | | Heating savings | | |
|----------|--------------------|------------------|---------------------|-----------------|---------------------|-----------|
| | | Refrigerated air | Evaporative cooling | Gas | Electric resistance | Heat pump |
| 1 | Low | 333 | N/A | 2 | 139 | 43 |
| 2 | Average | 533 | N/A | 4 | 223 | 69 |
| 3 | High | 763 | N/A | 5 | 319 | 99 |

Climate Zone 5: West Region

Table 45. Duct Sealing—Climate Zone 5: West Region—Deemed Annual Energy Savings , Alternate Approach (kWh)

| Category | Assessed leakiness | Cooling savings | | Heating savings | | |
|----------|--------------------|------------------|---------------------|-----------------|---------------------|-----------|
| | | Refrigerated air | Evaporative cooling | Gas | Electric resistance | Heat pump |
| 1 | Low | 274 | 87 | 7 | 329 | 84 |
| 2 | Average | 438 | 139 | 11 | 526 | 135 |
| 3 | High | 627 | 199 | 16 | 752 | 193 |

Deemed Summer Demand Savings Tables (Alternate Approach)

Climate Zone 1: Panhandle Region

Table 46. Duct Sealing—Climate Zone 1: Panhandle Region—Deemed Summer Demand Savings, Alternate Approach (kW)

| Category | Refrigerated air | Evaporative cooling |
|----------|------------------|---------------------|
| Low | 0.21 | 0.05 |
| Average | 0.34 | 0.08 |
| High | 0.48 | 0.12 |

Climate Zone 2: North Region

Table 47. Duct Sealing—Climate Zone 2: North Region—Deemed Summer Demand Savings , Alternate Approach (kW)

| Category | Refrigerated air | Evaporative cooling |
|----------|------------------|---------------------|
| Low | 0.19 | N/A |
| Average | 0.31 | N/A |
| High | 0.44 | N/A |

Climate Zone 3: South Region

Table 48. Duct Sealing—Climate Zone 3: South Region—Deemed Summer Demand Savings, Alternate Approach (kW)

| Category | Refrigerated air | Evaporative cooling |
|----------|------------------|---------------------|
| Low | 0.24 | N/A |
| Average | 0.39 | N/A |
| High | 0.55 | N/A |

Climate Zone 4: Valley Region

Table 49. Duct Sealing—Climate Zone 4: Valley Region—Deemed Summer Demand Savings, Alternate Approach (kW)

| Category | Refrigerated air | Evaporative cooling |
|----------|------------------|---------------------|
| Low | 0.15 | N/A |
| Average | 0.25 | N/A |
| High | 0.35 | N/A |

Climate Zone 5: West Region

Table 50. Duct Sealing—Climate Zone 5: West Region—Deemed Summer Demand Savings, Alternate Approach (kW)

| Category | Refrigerated air | Evaporative cooling |
|----------|------------------|---------------------|
| Low | 0.17 | 0.04 |
| Average | 0.28 | 0.07 |
| High | 0.40 | 0.10 |

Deemed Winter Demand Savings Tables (Alternate Approach)

Climate Zone 1: Panhandle Region

Table 51. Duct Sealing—Climate Zone 1: Panhandle Region—Deemed Winter Demand Savings, Alternate Approach (kW)

| Category | Heating system type | | |
|----------|---------------------|---------------------|-----------|
| | Gas | Electric resistance | Heat pump |
| Low | 0.00 | 0.19 | 0.03 |
| Average | 0.00 | 0.31 | 0.05 |
| High | 0.00 | 0.44 | 0.08 |

Climate Zone 2: North Region

Table 52. Duct Sealing—Climate Zone 2: North Region—Deemed Winter Demand Savings, Alternate Approach (kW)

| Category | Heating system type | | |
|----------|---------------------|---------------------|-----------|
| | Gas | Electric resistance | Heat pump |
| Low | 0.00 | 0.23 | 0.16 |
| Average | 0.00 | 0.36 | 0.25 |
| High | 0.00 | 0.52 | 0.36 |

Climate Zone 3: South Region

Table 53. Duct Sealing—Climate Zone 3: South Region—Deemed Winter Demand Savings, Alternate Approach (kW)

| Category | Heating system type | | |
|----------|---------------------|---------------------|-----------|
| | Gas | Electric resistance | Heat pump |
| Low | 0.00 | 0.20 | 0.11 |
| Average | 0.00 | 0.31 | 0.18 |
| High | 0.00 | 0.45 | 0.26 |

Climate Zone 4: Valley Region

Table 54. Duct Sealing—Climate Zone 4: Valley Region—Deemed Winter Demand Savings , Alternate Approach (kW)

| Category | Heating system type | | |
|----------|---------------------|---------------------|-----------|
| | Gas | Electric resistance | Heat pump |
| Low | 0.00 | 0.15 | 0.09 |
| Average | 0.00 | 0.25 | 0.15 |
| High | 0.01 | 0.35 | 0.21 |

Climate Zone 5: West Region

Table 55. Duct Sealing—Climate Zone 5: West Region—Deemed Winter Demand Savings , Alternate Approach (kW)

| Category | Heating system type | | |
|----------|---------------------|---------------------|-----------|
| | Gas | Electric resistance | Heat pump |
| Low | 0.00 | 0.06 | 0.02 |
| Average | 0.00 | 0.10 | 0.02 |
| High | 0.00 | 0.15 | 0.03 |

Claimed Peak Demand Savings

Refer to Volume 1, Section 4 for further details on peak demand savings and methodology.

Example Deemed Savings Calculation

Example 1. Using the **standard approach**, a 1,700 square foot home with a 3.5-ton central air conditioner and a gas furnace in Climate Zone 3 is found to have a pre-retrofit duct leakage rate of 600 CFM₂₅. After sealing leaks, duct leakage is estimated at 100 CFM₂₅. The project is completed in a non-HTR program.

$$\text{Max Initial Leakage Rate} = \left(400 \frac{\text{CFM}}{\text{ton}} \times 3.5 \text{ tons}\right) \times 35\% = 490 \text{ CFM}_{25}$$

$$\text{Reported Initial Leakage} = \text{Min}(600, 490) = 490 \text{ CFM}_{25}$$

$$DL_{pre} - DL_{post} = (490 - 100) = 390 \text{ CFM}_{25}$$

$$\text{kWh savings} = (1.23 + 0.02) \times 390 = 488 \text{ kWh}$$

$$\text{Summer kW savings} = 1.06 \times 10^{-3} \times 390 = 0.41 \text{ kW}$$

$$\text{Winter kW savings} = 8.60 \times 10^{-6} \times 390 = 0.003 \text{ kW}$$

Example 2. Using the **alternate approach**, a duct sealing project is completed on a home of any square footage with a central heat pump of any tonnage in Climate Zone 3. The duct system is categorized as 50-90% in conditioned space with an existing duct insulation value of R4-R7 and substantial leaks. Therefore, that home is categorized as an average leakage home. No leakage testing is performed. The project is completed in an HTR program. All savings are taken directly from deemed savings lookup tables.

$$\text{kWh savings} = 484 + 102 = 586 \text{ kWh}$$

$$\text{Summer kW savings} = 0.42 \text{ kW}$$

$$\text{Winter kW savings} = 0.20 \text{ kW}$$

Additional Calculators and Tools

There is a calculator to estimate the energy and demand savings associated with this measure using the algorithms described in the previous subsection.

Measure Life and Lifetime Savings

The estimated useful life (EUL) for a duct sealing measure is 18.0 years, as specified in the California Database of Energy Efficiency Resources (DEER) READI tool for EUL ID HV-DuctSeal-BW.⁷⁸

This value is consistent with the EUL reported in the 2014 California Database for Energy Efficiency Resources (DEER).⁷⁹

⁷⁸ DEER READI (Remote Ex-Ante Database Interface). <http://www.deeresources.com/index.php/readi>.

⁷⁹ Database for Energy Efficiency Resources (DEER). <http://www.deeresources.com/>.

Program Tracking Data and Evaluation Requirements

Primary inputs and contextual data that should be specified and tracked by the program database to inform the evaluation and apply the savings properly are:

- Climate zone
- Cooling Type (central refrigerated, evaporative cooling, none)
- Heating type (central gas furnace, central electric resistance furnace, heat pump, none)
 - Additional documentation is required to validate resistance heat (e.g., nameplate photo, utility inspection, or other evaluator-approved approach)
- Cooling capacity of home HVAC units (tons)

EESPs claiming savings according to duct leakage testing:

- Pre-improvement duct leakage at 25 Pa (cu. ft./min)
- Post-improvement duct leakage at 25 Pa (cu. ft./min)
- Pre- and post-photos of leakage test readings

EESPs claiming savings without performing leakage testing should provide:

- Description of the leakage severity in the home (low, average, or high)
- Description of location and condition of ducts:
 - Duct location (>90% conditioned, 50-90% conditioned, <50% conditioned)
 - Existing duct insulation value (>R7, R4-R7, <R4)
- Leakage characteristics (some observable leaks, substantial leaks, catastrophic leaks)
- Other relevant details that may assist with validating claimed leakage category (recommended)
- Description and photos of interventions taken (both pre and post condition), such as newly sealed joints, supply vents, and other relevant leaks sealed
- Incentive rate structure: incentive should be paid per home and should not vary by leakage category to avoid providing an incentive to overstate the existing leakage category.

References and Efficiency Standards

Petitions and Rulings

- Docket No. 41722. Petition of AEP Texas Central Company, AEP Texas North Company, CenterPoint Energy Houston Electric, LLC, El Paso Electric Company, Energy Texas, Inc., Oncor Electric Delivery Company LLC, Sharyland Utilities, L.P., Southwestern Electric Power Company, Southwestern Public Service Company, and Texas-New Mexico Power Company to Approve Revisions to Residential Deemed Savings to Incorporate Winter Peak Demand Impacts and Update Certain Existing Deemed Savings Values. Public Utility Commission of Texas.

Relevant Standards and Reference Sources

Not applicable.

Document Revision History

Table 56. Residential Duct Efficiency Improvements Revision History

| TRM version | Date | Description of change |
|-------------|------------|--|
| v1.0 | 11/25/2013 | TRM v1.0 origin. |
| v2.0 | 4/18/2014 | TRM v2.0 update. Minor formatting changes, and language introduced to provide further direction for low-income customers and testing procedure. Contractors now required to track cooling capacity of HVAC equipment. Language added to reflect updates to federal standards for central heat pumps and central air conditioners. |
| v2.1 | 1/30/2015 | TRM v2.1 update. Addition of language referring contractors to program manuals for information regarding health and safety precautions. |
| v3.0 | 4/10/2015 | TRM v3.0 update. No revision. |
| v3.1 | 11/05/2015 | TRM v3.1 update. Update of reference sources for air temperatures and densities, heating degree-days. Cooling demand savings required to be claimed. |
| v4.0 | 10/10/2016 | TRM v4.0 update. Approach changed from algorithm-based to deemed savings coefficients estimated using building simulation models. Updated energy and demand savings. Added separate savings for homes with evaporative cooling. Updated measure description to eliminate eligibility for homes without a central AC, but with a ducted heating system. |
| v5.0 | 10/2017 | TRM v5.0 update. Remove PY 2017 option to use energy and demand adjustment factors in combination with algorithm methodology from TRM v3.1. Added alternative approach to bypass the need to complete leakage testing in guidance memo to follow. |
| v6.0 | 11/2018 | TRM v6.0 update. Added alternative approach to bypass the need to complete leakage testing in guidance memo to follow. |

| TRM version | Date | Description of change |
|-------------|---------|---|
| v7.0 | 10/2019 | TRM v8.0 update. Added clarifying language on incentive rate per home. |
| v8.0 | 10/2020 | TRM v8.0 update. Updated eligibility and documentation requirements for electric resistance heat. |
| v9.0 | 10/2021 | TRM v9.0 update. Updated EUL reference. |

2.2.3 ENERGY STAR® Ground Source Heat Pumps Measure Overview

TRM Measure ID: R-HV-GH

Market Sector: Residential

Measure Category: HVAC

Applicable Building Types: Single-family, multifamily, manufactured

Fuels Affected: Electricity

Decision/Action Type(s): Replace-on-burnout, new construction

Program Delivery Type(s): Prescriptive

Deemed Savings Type: Deemed savings calculation

Savings Methodology: Engineering algorithms and estimates

Measure Description

This measure requires the installation of a ground-source heat pump (GSHP) meeting the minimum requirements of ENERGY STAR® geothermal heat pump key product criteria. The deemed savings are dependent upon the energy efficiency rating (EER) and coefficient of performance (COP) of the installed equipment. Savings calculations are presented for systems with and without desuperheaters.

Eligibility Criteria

The deemed savings apply to units with a capacity of $\leq 65,000$ Btu/hour.

Energy savings for desuperheaters only apply if the desuperheater is attached to an electric storage water heater. The electric storage water heating cannot replace a gas water heater in a retrofit installation.

Baseline Condition

The baseline unit is assumed to be an air-source heat pump (ASHP) for new construction, and either an ASHP or an air conditioner with an electric resistance furnace for replace-on-burnout projects. New construction baseline efficiency values for ASHPs are compliant with the current federal minimum standard,⁸⁰ effective January 1, 2015.

⁸⁰ DOE minimum efficiency standard for residential air conditioners/heat pumps.
<https://www.energy.gov/eere/femp/incorporate-minimum-efficiency-requirements-heating-and-cooling-products-federal>.

For replace-on-burnout (ROB) projects, the cooling baseline is reduced to 13.08 SEER. This value incorporates an adjustment to the baseline SEER value to reflect the percentage of current replacements that do not include the installation of an AHRI-matched system.⁸¹ The heating baseline for replace-on-burnout projects is dependent on the heating type of the baseline equipment.

Table 57. Ground Source Heat Pump GSHP Baseline Efficiencies

| Project type | Cooling mode ⁸² | Heating mode ⁸³ |
|--|----------------------------|----------------------------|
| New Construction | 11.8 EER (14 SEER) | 2.4 COP (8.2 HSPF) |
| ROB—Air Source Heat Pump Baseline | 11.2 EER (13.08 SEER) | 2.4 COP (8.2 HSPF) |
| ROB— Air Conditioner with Electric Resistance Furnace Baseline | | 1 COP (3.412 HSPF) |

High-Efficiency Condition

Table 58 displays the ENERGY STAR® requirements for eligible geothermal heat pumps GSHPs as of January 1, 2012. Energy efficiency service providers are expected to comply with the latest ENERGY STAR® requirements.

Table 58. Ground Source Heat Pump ENERGY STAR® Requirements

| Product type | Cooling mode (EER) | Heating mode (COP) |
|----------------------------|--------------------|--------------------|
| Closed Loop Water-to-Air | 17.1 | 3.6 |
| Open Loop Water-to-Air | 21.1 | 4.1 |
| Closed Loop Water-to-Water | 16.1 | 3.1 |
| Open Loop Water-to-Water | 20.1 | 3.5 |
| Direct Geexchange (DGX) | 16.0 | 3.6 |

⁸¹ Frontier Energy on behalf of the Electric Utility Marketing Managers of Texas (EUMMOT). "Petition to revise Existing Commission-Approved Deemed Savings Values for Central Air Conditioning and Heat Pump Systems: Docket No. 36780." Public Utility Commission of Texas. Approved August 27, 2009. <https://interchange.puc.texas.gov/>. Adapted for new 14 SEER baseline.

⁸² Code specified EER value converted to SEER using $EER = -0.02 \times SEER^2 + 1.12 \times SEER$. National Renewable Energy Laboratory (NREL). "Building America House Simulation Protocols." U.S. Department of Energy. Revised October 2010. <http://www.nrel.gov/docs/fy11osti/49246.pdf>.

⁸³ Code specified HSPF value converted to COP using $COP = HSPF \times 1,055 \text{ J/Btu} \div 3,600 \text{ J/W-h} = HSPF \div 3.412$.

The specifications in the charts above apply to single-stage models. Multi-stage models may be qualified based on:⁸⁴

$$EER = (\text{highest rated capacity } EER + \text{lowest rated capacity } EER) \div 2$$

Equation 22

$$COP = (\text{highest rated capacity } COP + \text{lowest rated capacity } COP) \div 2$$

Equation 23

Energy and Demand Savings Methodology

Savings Algorithms and Input Variables

Peak demand and annual energy savings for GSHP systems should be calculated, as shown below. Where a desuperheater is also installed, please see the Deemed Energy Savings Tables section for additional energy savings and the Deemed Summer Demand Savings Tables for additional demand savings.

Energy and demand savings for desuperheaters were adapted from a 2001 study conducted by Oak Ridge National Laboratory (ORNL) on ~~ground source heat pumps~~ GSHPs in Texas.⁸⁵ Desuperheater savings were calculated for each climate zone by taking the difference in savings between GSHPs with and without desuperheaters and averaging the savings between low and high-efficiency units. Savings for GSHP systems with desuperheaters should be calculated using the algorithms below with an additional energy credit based on the system capacity and efficiency.

The ORNL study draws from a 1998 analysis based on a study conducted at the Fort Polk Joint Readiness Training Center in Leesville, Louisiana. The Fort Polk study used calibrated simulations of 200 multifamily residences in the complex to estimate energy savings attributable to the replacement of air source heat pumps with ~~ground source heat pumps~~ GSHPs. These estimates were found to be within 5 percent of actual post-retrofit savings. Building models were developed using TRNSYS.⁸⁶

Using the Fort Polk models, the ORNL study assumed a baseline of a 1.5 ton, 10 SEER air source heat pump. Simulations of low-, medium-, and high-efficiency ~~ground source heat pumps~~ GSHPs with and without desuperheaters were compared against the baseline unit. The models were run using TMY-2 weather profiles for climate zones 1-4. Energy and demand differences between the pre- and post-retrofit models were used to estimate average savings per ton of cooling capacity.

⁸⁴ Geothermal Heat Pumps Key Product Criteria, https://www.energystar.gov/products/heating_cooling/heat_pumps_geothermal/key_product_criteria.

⁸⁵ Shonder, J. A., Hughes, P., and Thornton, J. Development of Deemed Energy and Demand Savings for Residential Ground Source Heat Pump Retrofits in the State of Texas. Transactions-American Society of Heating, Refrigerating, and Air Conditioning Engineers. 108, no. 1: 953-961, 2001.

⁸⁶ Klein, S. A. TRNSYS Manual: A Transient Simulation Program. Solar Engineering Laboratory, University of Wisconsin-Madison, Version 14.2 for Windows, September 1996.

In the 1998 analysis, low-efficiency GSHPs were assumed to be units with an EER of 12.4 and capacity of 19 kBtuh, while medium-efficiency units had an EER of 16.8 and capacity of 21 kBtuh. High-efficiency units had an EER of 18.3, with a capacity of 22 kBtuh.

These models were used to derive the energy and demand savings associated with installation of a desuperheater along with a ground-source heat pump (GSHP), as shown in Table 61 and Table 62, respectively.

Energy Savings Algorithms

$$kWh_{Savings} = kWh_{Savings,C} + kWh_{Savings,H} + kWh_{desuperheater}$$

Equation 24

$$kWh_{Savings,C} = CAP_C \times \frac{1 \text{ kW}}{1,000 \text{ W}} \times EFLH_C \times \left(\frac{1}{SEER_{Base}} - \frac{1}{EER_{GSHP}} \right)$$

Equation 25

$$kWh_{Savings,H} = CAP_H \times \frac{1 \text{ kWh}}{1,000 \text{ Wh} \times 3,412 \text{ Btu}} \times EFLH_H \times \left(\frac{1}{HSPFCOP_{Base}} - \frac{1}{3.412 \times COP_{GSHP}} \right)$$

Equation 26

Where:

$kWh_{desuperheater}$ = Energy savings (kWh) associated with installation of a desuperheater (see Table 61). These savings should only be added if a desuperheater is installed.

CAP_C = Rated equipment cooling capacity of the installed GSHP (Btu/hr)

CAP_H = Rated equipment heating capacity of the installed GSHP (Btu/hr)

$EFLH_C$ = Equivalent full load hours for cooling)

$EFLH_H$ = Equivalent full load hours for heating (Table 59)

EER_{Base} = Energy Efficiency Ratio of the baseline cooling equipment (Table 57)

EER_{GSHP} = Energy Efficiency Ratio of the installed GSHP

COP_{Base} = Coefficient of Performance of the baseline heating equipment (Table 57)

COP_{GSHP} = Coefficient of Performance of the installed GSHP

Table 59. Equivalent Full Load Cooling/Heating Hours⁸⁷

| Climate Zone | EFLH _C | EFLH _H |
|---------------------------|-------------------|-------------------|
| Climate zone 1: Panhandle | 1,142 | 1,880 |
| Climate zone 2: North | 1,926 | 1,343 |
| Climate zone 3: South | 2,209 | 1,127 |
| Climate zone 4: Valley | 2,958 | 776 |
| Climate zone 5: West | 1,524 | 1,559 |

Demand Savings Algorithms

$$kW_{Savings,Summer} = CAP_C \times \frac{1 \text{ kW}}{1,000 \text{ W}} \times \left(\frac{1}{EER_{Base}} - \frac{1}{EER_{GSHP}} \right) \times CF_C + kW_{desuperheater}$$

Equation 27

$$kW_{Savings,Winter} = CAP_H \times \frac{1 \text{ kWh}}{3,412 \text{ Btu}} \times \left(\frac{1}{COP_{Base}} - \frac{1}{COP_{GSHP}} \right) \times CF_H$$

Equation 28

Where:

- CAP_C = Rated equipment cooling capacity of the installed GSHP (Btu/hr)
- CAP_H = Rated equipment heating capacity of the installed GSHP (Btu/hr)
- EER_{Base} = Energy Efficiency Ratio of the baseline cooling equipment (
Table 57
~~Table 57~~)
- EER_{GSHP} = Energy Efficiency Ratio of the installed GSHP
- COP_{Base} = Coefficient of Performance of the baseline heating equipment (
Table 57
~~Table 57~~)
- COP_{GSHP} = Coefficient of Performance of the installed GSHP
- CF_C = Coincidence Factor = (Table 60~~Table 60~~)
- CF_H = Coincidence Factor = (Table 60~~Table 60~~)
- $kW_{desuperheater}$ = Summer demand savings (kW) associated with installation of a desuperheater (see Table 62). These savings should only be added if a desuperheater is installed.

⁸⁷ ENERGY STAR® Central AC/HP Savings Calculator.

Table 60. Ground Source Heat Pumps GSHP —Coincidence Factors for GSHPs⁸⁸

| Season | Climate zone 1: Amarillo | Climate zone 2: Dallas | Climate zone 3: Houston | Climate zone 4: Corpus Christi | Climate zone 5: El Paso |
|--------|-----------------------------|---------------------------|----------------------------|-----------------------------------|----------------------------|
| Summer | 0.634 | 0.677 | 0.626 | 0.583 | 0.725 |
| Winter | 0.549 | 0.478 | 0.515 | 0.453 | 0.437 |

Deemed Energy Savings Tables

Table 61. Energy Savings for Desuperheaters per Cooling Tonnage

| Climate zone | kWh/ton |
|---------------------------|---------|
| Climate zone 1: Panhandle | 612 |
| Climate zone 2: North | 791 |
| Climate zone 3: South | 802 |
| Climate zone 4: Valley | 847 |
| Climate zone 5: West | 791 |

Deemed Summer Demand Savings Tables

Table 62. Summer Peak Demand Savings for Desuperheaters per Cooling Tonnage

| Climate zone | kW/ton |
|---------------------------|--------|
| Climate zone 1: Panhandle | 0.440 |
| Climate zone 2: North | 0.405 |
| Climate zone 3: South | 0.405 |
| Climate zone 4: Valley | 0.410 |
| Climate zone 5: West | 0.405 |

Deemed Winter Demand Savings Tables

There are no lookup tables available for this measure. See engineering algorithms in the previous section for calculating energy and demand savings.

Refer to Volume 1, Section 4 for further details on winter peak demand savings and methodology.

Claimed Peak Demand Savings

Refer to Volume 1, Section 4 for further details on peak demand savings and methodology.

Additional Calculators and Tools

Not applicable.

⁸⁸ See Volume 1

Measure Life and Lifetime Savings

The estimated useful life (EUL) of a ~~high efficiency ground source heat pump~~ GSHP unit is 20 years.

This value is consistent with the minimum life expectancy reported in the Department of Energy GSHP guide.⁸⁹

Program Tracking Data and Evaluation Requirements

It is required that the following list of primary inputs and contextual data be specified and tracked by the program database to inform the evaluation and apply the savings properly:

- Climate zone
- Decision/action type (new construction, replace-on-burnout)
- Replaced unit heating type (heat pump, electric resistance furnace)
 - Additional documentation is required to validate electric resistance heat (e.g., nameplate photo, utility inspection, or other evaluator-approved approach); sampling is allowed for multifamily complexes
- Installed GSHP type (closed loop water-to-air, open loop water-to-air, closed loop water-to-water, open loop water-to-water, direct geoechange)
- ~~Cooling Rated cooling~~ and heating capacity of the new unit (Btu/hr)
- Energy Efficiency Ratio (EER) of the new unit
- Coefficient of Performance (COP) of the new unit
- Whether a desuperheater was also installed or present
- Proof of purchase – with date of purchase and quantity
 - Alternative: photo of unit installed or other pre-approved method of installation verification
- Manufacturer, model, and serial number
 - AHRI certificate matching model number

References and Efficiency Standards

Petitions and Rulings

Not applicable.

⁸⁹ Department of Energy. "Guide to Geothermal Heat Pumps. February 2011.
http://www.energy.gov/sites/prod/files/guide_to_geothermal_heat_pumps.pdf.

Relevant Standards and Reference Sources

- ISO/AHRI 13256-1
- Shonder, J. A., Hughes, P., and Thornton, J. Development of Deemed Energy and Demand Savings for Residential Ground Source Heat Pump Retrofits in the State of Texas. Transactions-American Society of Heating, Refrigerating, and Air Conditioning Engineers. 108, no. 1: 953-961, 2001.
- The applicable version of ENERGY STAR®'s specifications and requirements addressing residential ~~ground source heat pumps~~GSHPs.

Document Revision History

Table 63. Residential ~~Ground Source Heat Pumps~~GSHPs Revision History

| TRM version | Date | Description of change |
|-------------|----------------|--|
| v1.0 | 11/25/2013 | TRM v1.0 origin. |
| v2.0 | 4/18/2014 | TRM v2.0 update. Updated by Frontier Energy, March 2014, based on new federal standards and alternative methodology. |
| v2.1 | 1/30/2015 | TRM v2.1 update. No revision. |
| v3.0 | 4/10/2015 | TRM v3.0 update. No revision. |
| v3.1 | 11/05/2015 | TRM v3.1 update. No revision. |
| v4.0 | 10/10/2016 | TRM v4.0 update. No revision. |
| v5.0 | 10/2017 | TRM v5.0 update. Updated peak coincidence factors for compliance with current Texas peak definition. Single coincidence factor replaced with individual factors for each climate zone. |
| v6.0 | 11/2018 | TRM v6.0 update. No revision. |
| v7.0 | 10/2019 | TRM v7.0 update. Updates to tracking requirements. |
| v8.0 | 10/2020 | TRM v8.0 update. Updated algorithms to make units consistent. |
| <u>v9.0</u> | <u>10/2021</u> | <u>TRM v9.0 update. Added clarifying language and updated algorithm units.</u> |

2.2.4 Central Air Conditioner and Heat Pumps Measure Overview

TRM Measure ID: R-HV-CH

Market Sector: Residential

Measure Category: HVAC

Applicable Building Types: Single-family, multifamily, manufactured

Fuels Affected: Electricity

Decision/Action Type(s): Replace-on-burnout, early retirement, new construction

Program Delivery Type(s): Prescriptive, direct install (early retirement)

Deemed Savings Type: Look-up tables

Savings Methodology: Engineering spreadsheets and estimates

Measure Description

Residential replacement of existing heating and cooling equipment with a new central air-source air conditioner (AC) or heat pump (HP) in an existing building, or the installation of a new central AC or HP in a new residential construction. Downsized systems that are right-sized per heat load calculation are also eligible. A new central system includes an entire packaged unit or a split system consisting of an indoor unit with a matching remote condensing unit. This measure also applies to the installation of dual-fuel HPs that meet all existing measure eligibility criteria.

Eligibility Criteria

Newly installed units must have a cooling capacity of less than 65,000 Btu/hour (5.4 tons) to be eligible for these deemed savings. Gas furnaces are not eligible to be awarded savings for replacement through this measure.

Equipment shall be properly sized to dwelling based on ASHRAE or ACCA Manual J standards. Manufacturer datasheets for installed equipment or documentation of AHRI or DOE CCMS certification must be provided^{90,91}. Savings should be calculated using rated capacities whenever possible. Reported system capacities and efficiencies should always match those verified by AHRI or DOE as tested under AHRI operating conditions for a specific combination of equipment, including condenser, coil, and furnace (or condenser only for packaged units). Savings should never be calculated using efficiency ratings for individual system components.

Customers should be advised against using the emergency heat (EM HEAT) setting on heat pump thermostats. This setting is meant only for use in emergency situations when the heat pump is damaged or malfunctioning. Supplemental heating automatically kicks on below freezing conditions using the regular HEAT setting. Contractors installing a new heat pump thermostat with equipment install shall advise customer of correct thermostat usage.

⁹⁰ Air-Conditioning, Heating, and Refrigeration Institute (AHRI) Directory: <https://www.ahridirectory.org/>.

⁹¹ Department of Energy Compliance Certification Management System (DOE CCMS): <https://www.regulations.doe.gov/certification-data/>.

For early retirement or rightsizing projects, attempt to determine the rated capacity of the existing unit. The rated capacity may be found on the manufacturer specification sheet for the existing unit if the new system is not available on the AHRI or DOE CCMS directories. If the model number of the existing unit is unobtainable or if the manufacturer specification sheet cannot be found, use nominal tonnage for both the existing and new unit. Never use nominal tonnage for the existing unit in combination with rated tonnage for the new unit, which can lead to overstated savings. Additionally, never use nominal tonnage to determine savings for projects where no early retirement or rightsizing has occurred.

For early retirement projects, to receive savings, the unit to be replaced must be functioning at the time of removal with a maximum age of 24 years for ACs and 20 years for HPs. Otherwise, claim savings for a replace-on-burnout project.

The replacement of an evaporative cooler with a central system is eligible where the decision to change equipment types predates or is independent of the decision to install efficient equipment and should be claimed against the new construction baseline.

The replacement of a room ~~air conditioner~~AC with a central ~~air conditioner~~AC or ~~heat pump~~HP is eligible and should be claimed against the new construction baseline. Refer to the Replace-on-burnout or Early Retirement of an Electric Resistance Furnace section for guidance about the appropriate heating baseline for residences with electric resistance heat. Under this scenario, no savings should be awarded for rightsizing.

New construction projects are not eligible to receive deemed savings for system rightsizing.⁹² For system upsizing, savings should generally be claimed against the new construction baseline. However, when upsizing while going from a single larger capacity system to multiple smaller capacity systems, savings may be claimed against the applicable replace-on-burnout or early retirement baseline if the total pre and post tonnage are within ½ ton.⁹³ For this scenario, savings must be looked up using the lower pre-tonnage. If the multiple installed units do not share the same efficiency value, savings should be looked up using the most conservative efficiency value.

Additionally, low-income or hard-to-reach programs may use the electric resistance baseline for the following two scenarios. The electric resistance baseline may be used for systems upsized by no more than a half-ton in lieu of the new construction baseline. Under this scenario, cooling savings should be claimed against the new construction baseline using the installed (higher) capacity. Heating savings should be claimed against the electric resistance baseline using the existing (lower) capacity. Documentation should be aligned with the rightsizing

and electric resistance baseline requirements outlined in this measure. The second scenario is for a major multifamily renovation when a centralized system, such as a boiler, is replaced with individual heat pumps. For this scenario, the electric resistance baseline may be claimed in lieu of new construction only if the building owner can document intent to install electric resistance furnaces without program intervention. The cooling savings should still be claimed against the new construction baseline. Documentation should follow early retirement and electric resistance baseline requirements.-

⁹² For projects using a custom baseline see TRM Volume 4.

⁹³ This exception is allowed to account for efficiency improvements due to zoning that are not reflected in the current savings methodology.

When replacing a single unit with multiple units where the capacity is the same or has been downsized, savings should be looked up using the total system pre and post capacities. Again, if the multiple installed units do not share the same efficiency value, savings should be looked up using the most conservative efficiency value.

Baseline Condition

New Construction, Replace-on-Burnout, or Early Retirement of an Air-Source AC or HP

New construction baseline efficiency values for ACs or HPs are compliant with the current federal minimum standard,⁹⁴ effective January 1, 2015. The baseline is assumed to be a new system with an AHRI-listed SEER rating of 14.0. This baseline is also applicable to central HP installations replacing ACs with central gas heat, evaporative coolers with central, space, or no heating, or room/window ACs with central, space, or no heating.

For replace-on-burnout (ROB) projects, the cooling baseline is reduced to 13.08 SEER. This value incorporates an adjustment to the baseline SEER value to reflect the percentage of current replacements that do not include the installation of an AHRI-matched system.⁹⁵

For early retirement (ER) projects, the cooling baseline is reduced to 10 SEER for systems installed before January 23, 2006. For systems installed on or after January 23, 2006, the ER baseline increases to 12.44 SEER. Systems manufactured as of January 1, 2015 are not eligible for early retirement.

For ROB projects, heating baseline efficiency values for HPs are compliant with the current federal minimum standard, effective January 1, 2015. These standards specify an HSPF of 8.2 for split systems and 8.0 for packaged systems. This baseline reflects updates to federal standards that take effect on January 1, 2015, as defined in the Department of Energy (DOE) energy efficiency standards (10 CFR Part 430).⁹⁶ For ER projects where the existing system was installed on or after January 23, 2006, the heating baseline efficiency is assumed to be an HSPF of 7.7 based on the federal minimum standard in effect from January 23, 2006, through December 31, 2014.⁹⁷ For ER projects where the existing system was installed before January 23, 2006, the heating baseline efficiency is reduced to 6.8 HSPF based on the federal minimum standard in effect prior to January 23, 2006.

⁹⁴ DOE minimum efficiency standard for residential air conditioners/heat pumps. https://www1.eere.energy.gov/buildings/appliance_standards/standards.aspx?productid=48&action=view_wlive.

⁹⁵ Frontier Energy on behalf of the Electric Utility Marketing Managers of Texas (EUMMOT). "Petition to revise Existing Commission-Approved Deemed Savings Values for Central Air Conditioning and Heat Pump Systems: Docket No. 36780." Public Utility Commission of Texas. Approved August 27, 2009. <https://interchange.puc.texas.gov/>. Adapted for new 14 SEER baseline.

⁹⁶ 10 CFR Part 430.32(c)2. *Energy Conservation Program: Energy Conservation Standards for Residential Water Heaters, Direct Heating Equipment, and Pool Heaters; Final Rule*. Online. Available: <http://www.gpo.gov/fdsys/pkg/CFR-2012-title10-vol3/pdf/CFR-2012-title10-vol3-sec430-32.pdf>. Accessed February 2014.

⁹⁷ Ibid.

Replace-on-Burnout or Early Retirement of an Electric Resistance Furnace

Electric resistance heating baselines may refer to residences heated by a centralized forced-air furnace or by individual space heaters.⁹⁸ Space heating primarily refers to electric baseboard zonal heaters controlled by thermostats or to portable plug-load heaters.⁹⁹ Electric resistance heat controlled by a wall thermostat is eligible to claim the deemed savings presented in this measure. Homes with portable space heaters should calculate savings using a HP heat pump baseline.

By the nature of the technology, all electric resistance furnaces have the same efficiency with HSPF = 3.41.¹⁰⁰ Projects in which an electric resistance furnace is replaced, either in replace-on-burnout or early retirement scenarios, use this baseline for heating-side savings.

For ROB projects, cooling savings are the same as for new construction and ROB of an air-source HP. For early retirement (ER) projects, the cooling baseline is reduced to 10 SEER for systems installed before January 23, 2006. For systems installed on or after January 23, 2006, the ER baseline increases to 12.44 SEER.

Table 64. Central AC/HPs – Baseline Efficiencies

| Project type | Cooling mode | Heating mode |
|---|--------------|--------------|
| New construction | 14 SEER | 8.2 HSPF |
| Replace-on-burnout, heat pump | 13.08 SEER | 8.2 HSPF |
| Replace-on-burnout, electric resistance furnace | | 3.41 HSPF |
| Early retirement, heat pump (manufactured as of 1/23/2006) | 12.44 SEER | 7.7 HSPF |
| Early retirement, electric resistance furnace (manufactured as of 1/23/2006 through 12/31/2014) | | 3.41 HSPF |
| Early retirement, heat pump (manufactured before 1/23/2006) | 10 SEER | 6.8 HSPF |
| Early retirement, electric resistance furnace (manufactured before 1/23/2006) | | 3.41 HSPF |

High-Efficiency Condition

Table 65 displays the Consortium for Energy Efficiency (CEE) requirements for eligible Tier 4-0 HPs as of January 1, 2001⁵⁹. Energy efficiency service providers are expected to at least comply with the latest CEE Tier 4-0 requirements.

No Since there is no full-load efficiency requirement is specified in the current federal standard, systems that comply with SEER and HSPF requirements but do not comply with the EER requirements outlined in Table 65 Table 65 may still be eligible to claim savings. Therefore, Systems with qualifying SEER and HSPF energy ratings are permitted to claim cooling energy savings, heating energy savings, and winter demand savings for systems, but not summer demand savings where the EER does not comply with the below requirement.

⁹⁸ Electric Resistance Heating: <https://www.energy.gov/energysaver/home-heating-systems/electric-resistance-heating>.

⁹⁹ Portable Heaters: <https://www.energy.gov/energysaver/home-heating-systems/portable-heaters>.

¹⁰⁰ COP = HSPF × 1,055 J/BTU / 3,600 J/W-hr. For Electric Resistance, heating efficiency is 1 COP. Therefore, HSPF = 1 × 3,600 / 1,055 = 3.41.

Table 65. Central AC/HPs—CEE Tier 0 Requirements¹⁰¹

| SEER | EER ¹ | HSPF |
|------|------------------|------|
| 14.5 | 12.0 | 8.5 |

Split system efficiencies are driven primarily by the efficiency of the condenser unit. -If the paired outdoor and indoor units are not listed on the AHRI certification listing and only provide DOE CCMS testing results, then the capacity and efficiency of the high efficiency condition shall not exceed the average of the AHRI certification listing pairing for the matching condenser. -The DOE CCMS listing provides documentation of the results that are on the AHRI certification listing and can be downloaded and filtered based on listing using a similar condenser and various indoor units.

Energy and Demand Savings Methodology

Savings Algorithms and Input Variables

Replace-on-Burnout or New Construction

Energy, summer demand, and winter demand savings were estimated using AC and HP performance curves developed by the National Renewable Energy Laboratory¹⁰² for typical units in each of the following SEER ranges:

- Baseline units
- 14.5–14.9
- 15.0–15.9
- 16.0–16.9
- 17.0–17.9
- 18.0–20.9
- 21.0 and above

14.5–16.9 SEER units were assumed to be single stage. 17.0 and above SEER units were assumed to be multi-stage cooling units.

These performance curves provide the capacity and efficiency of the ACs and HPs operating in cooling mode across a wide range of outside air temperatures. Unit loading was estimated as a function of outside air temperature, and hours of cooling mode operation under different loadings were estimated using bin weather data for each weather zone. In heating mode, predicted HVAC operation was limited to meeting 77 percent of load, using a factor applied in Manual J to correlate design load hours to equivalent full load hours under actual operating

¹⁰¹ CEE Residential High Efficiency Central Air Conditioners and Air Source Heat Pumps Specification, January 1, 2015. <https://library.cee1.org/content/cee-residential-high-efficiency-central-air-conditioners-and-air-source-heat-pumps-specifica>.

¹⁰² D. Cutler et al. Improved Modeling of Residential Air Conditioners and Heat Pumps for Energy Calculations. National Renewable Energy Laboratory. NREL/TP-5500-56354. January 2013. Tables 12 and 13. <http://www.nrel.gov/docs/fy13osti/56354.pdf>.

conditions. This approach accounts for the observation that heating systems are not always operated even when outdoor conditions indicate they should.

Summer and winter demand savings were estimated according to the expected unit performance under design conditions. For all weather zones, it is assumed that typical HVAC systems are sized to 115 percent of their design cooling load (oversized by 15 percent). Heating mode capacity was related to rated cooling capacity using the rated capacity in the cooling and heating mode of the residential market HP products of four major manufacturers according to data exported from AHRI. Data were exported from the AHRI directory, and the average ratio for each equipment size of heating capacity to cooling capacity was multiplied by the rated (cooling side) capacity to estimate the HP capacity. HP system output was then compared to its loading under design conditions.

The model used the following set of normalized performance curves to scale the rated performance values as a function of outdoor dry-bulb temperature ranging from 65 to 115 degrees Fahrenheit. The total capacity and Energy Input Ratio (EIR = 1/COP) curves are a function of entering wet-bulb temperature (EWB) and outdoor dry-bulb temperature (ODB) and are both quadratic curve fits of the form:

$$y = a + b \times T_{EWB} + c \times T_{EWB}^2 + d \times T_{ODB} + e \times T_{ODB}^2 + f \times T_{EWB} \times T_{ODB}$$

Equation 29

Table 66. AC and HP Capacity Curve Coefficients¹⁰³

| Coeff. | Cooling | | | Heating | | |
|--------|--------------|-------------------|--------------|--------------|-------------------|-------------|
| | Single stage | Multi-stage/speed | | Single sage | Multi-stage/speed | |
| | | Low | High | | Low | High |
| a | 3.670270705 | 3.940185508 | 3.109456535 | 0.566333415 | 0.335690634 | 0.306358843 |
| b | -0.098652414 | -0.104723455 | -0.085520461 | -0.000744164 | 0.002405123 | 0.005376987 |
| c | 0.000955906 | 0.001019298 | 0.000863238 | -0.0000103 | -0.0000464 | -0.0000579 |
| d | 0.006552414 | 0.006471171 | 0.00863049 | 0.009414634 | 0.013498735 | 0.011645092 |
| e | -0.0000156 | -0.00000953 | -0.000021 | 0.0000506 | 0.0000499 | 0.0000591 |
| f | -0.000131877 | -0.000161658 | -0.000140186 | -0.00000675 | -0.00000725 | -0.0000203 |

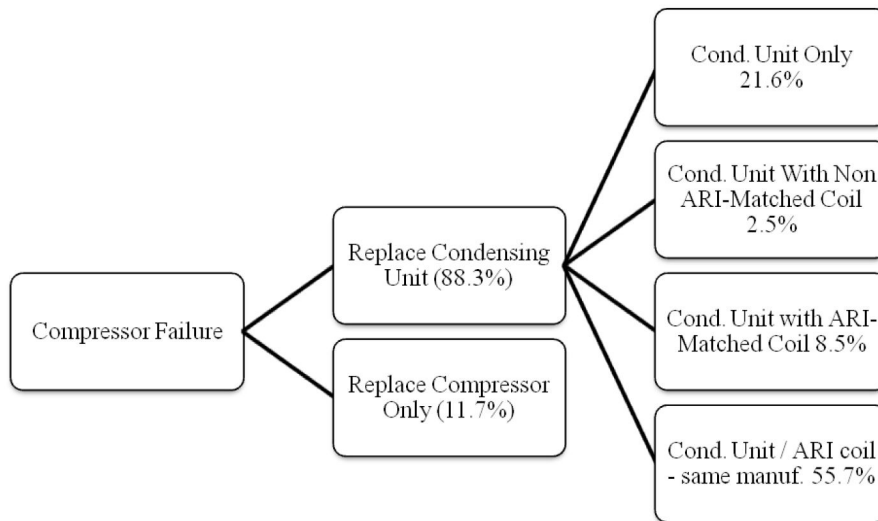
¹⁰³ Using air conditioner capacity curve coefficients for heat pump cooling savings.

Table 67. AC and HP EIR Curve Coefficients¹⁰⁴

| Coeff. | Cooling | | | Heating | | |
|--------|--------------|-------------------|--------------|--------------|-------------------|--------------|
| | Single stage | Multi-stage/speed | | Single sage | Multi-stage/speed | |
| | | Low | High | | Low | High |
| a | -3.302695861 | -3.87752688 | -1.990708931 | 0.718398423 | 0.36338171 | 0.981100941 |
| b | 0.137871531 | 0.164566276 | 0.093969249 | 0.003498178 | 0.013523725 | -0.005158493 |
| c | -0.001056996 | -0.001272755 | -0.00073335 | 0.000142202 | 0.000258872 | 0.000243416 |
| d | -0.012573945 | -0.019956043 | -0.009062553 | -0.005724331 | -0.009450269 | -0.005274352 |
| e | 0.000214638 | 0.000256512 | 0.000165099 | 0.00014085 | 0.000439519 | 0.000230742 |
| f | -0.000145054 | -0.000133539 | -0.0000997 | -0.000215321 | -0.000653723 | -0.000336954 |

To estimate the baseline SEER value for retrofit installations, Texas A&M's Energy Systems Laboratory (ESL) surveyed dealers across the State to determine installation practices. The research found that in the event of a compressor failure out of warranty, dealers replaced the compressor 11.7 percent of the time, and replaced the condensing unit 88.3 percent of the time. Further, the condensing unit replacements consist of condensing unit-only replacements, replacements with mismatched evaporator coils, and replacements with matching evaporator coils. The percentages for these installations are as follows:

Figure 1. Central AC/HPs—Unit Replacement Percentages upon Compressor Failure



Source: Docket No. 36780

¹⁰⁴ Using air conditioner capacity EIR coefficients for heat pump cooling savings.

To calculate a weighted average SEER for these installations, ESL assumed that a compressor-only replacement resulted in no increase in SEER and that the SEER of a condensing unit installed without a matching coil would be 85 percent of the SEER value for a matched system. The ESL estimate of the baseline SEER for replacement AC units is given by the following equation:

$$SEER_{Base} = (SEER_{Compressor\ Replacement}) \times (Actual\ \% \ Compressor\ Replacement) \\ + (SEER_{Condenser\ Replacement}) \times (Actual\ \% \ Condenser\ Replacement) \\ + (SEER_{System\ Replacement}) \times (Actual\ \% \ System\ Replacement)$$

Equation 30

Substituting ESL SEER estimates and survey data provides the following baseline SEER estimate:

$$SEER_{Base} = (9.5) \times (11.7\%) + (11.05) \times (24.1\%) + (13.5) \times (64.2\%) = 12.44$$

Adjusting for the increased 14 SEER baseline:

$$SEER_{Base} = (10.5) \times (11.7\%) + (11.9) \times (24.1\%) + (14) \times (64.2\%) = 13.08$$

In new construction, there is no possibility of a partial system (e.g., condensing unit-only) change out, so the 13.08 baseline would not be appropriate. Therefore, the baseline for new construction installations is set at the federal government's minimum efficiency standard of 14 SEER.

Early Retirement

Annual energy (kWh) and summer peak demand (kW) savings must be calculated separately for two time periods:

1. The estimated remaining life of the equipment that is being removed, designated the remaining useful life (RUL), and
2. The remaining time in the EUL period (EUL—RUL)

Annual energy and summer peak demand savings are calculated by weighting the early retirement and replace-on-burnout savings by the RUL of the unit and the remainder of the EUL period, as outlined in the Volume 3 appendices.