



Control Number: 35077



Item Number: 91

Addendum StartPage: 0

**PUC Project No. 35077**

2009 APR 20 PM 2:53  
PUC-REGISTRATION & FILING CLERK

**First Amendment to the  
INTERCONNECTION AGREEMENT**

**Between**

**The City of Lexington**

**and**

**Lower Colorado River Authority**

**April 20, 2009**

**FIRST AMENDMENT TO  
INTERCONNECTION AGREEMENT**

This First Amendment ("Amendment") to the Interconnection Agreement, dated June 4, 2008 between The City of Lexington ("City") and the LCRA Transmission Services Corporation ("Corporation") (the "Agreement") is made and entered into this 9<sup>th</sup> day of March, ~~2008~~, between the City and the Corporation, collectively referred to hereinafter as the Parties. In consideration of the mutual promises and undertakings herein set forth, the Parties agree to amend the Agreement as follows:

1. Exhibit "A" attached to the Agreement is deleted in its entirety and the Exhibit "A" attached to this First Amendment is hereby added to the Agreement in lieu thereof.
2. Facility Schedule No. 1 (including the diagrams attached thereto) is deleted in its entirety and Facility Schedule No. 1 attached to this First Amendment is hereby added to the Agreement in lieu thereof.
3. Facility Schedule No. 1 (including the diagrams attached thereto) attached to this First Amendment will become effective upon execution of this First Amendment by the Parties.

Except as otherwise expressly provided for herein, the Agreement will continue in full force and effect in accordance with its terms.

IN WITNESS WHEREOF, the Parties have caused this First Amendment to be executed in several counterparts, each of which shall be deemed an original but all shall constitute one and the same instrument.

CITY OF LEXINGTON

By: Robert L. Willrich, Sr.

Name: Robert L. Willrich, Sr

Title: Mayor

Date: 12-22-08

LCRA TRANSMISSION SERVICES  
CORPORATION

By: Ray Pfefferkorn

Name: Ray Pfefferkorn, P.E.

Title: LCRA Transmission Engineering  
Manager

Date: 3/9/09



**EXHIBIT A**

<b>FACILITY SCHEDULE NO.</b>	<b>LOCATION OF POINT(S) OF INTERCONNECTION (# of Points)</b>	<b>INTERCONNECTION VOLTAGE (kV)</b>	<b>EFFECTIVE DATE OF INTERCONNECTION</b>
1	Lexington Substation (4)	12.5 kV	

## FACILITY SCHEDULE NO. 1

1. **Name:** Lexington Substation
2. **Facility Location:** The Lexington Substation is located at 8800 N. U.S. Hwy 77, Lexington, Lee County, Texas 78947.
3. **Points of Interconnection:** There are four (4) Points of Interconnection in the Lexington Substation generally described as:
  - where the incoming distribution line connects to the tubular bus between switches LX-21 and LX-23 at breaker LX-20.
  - where the incoming distribution line connects to the tubular bus between switches LX-61 and LX-63 at breaker LX-60.
  - where the jumper from breaker LX-60, passing thru CT-5, connects to the four hole pad on switch LX-59.
  - where the jumper from breaker LX-60 connects to the four hole pad on switch LX-61
4. **Transformation Services Provided by LCRA TSC:** Yes
5. **Metering Services Provided by LCRA TSC:** Yes
6. **Delivery Voltage:** 12.5 kV
7. **Metered Voltage and Location:** The metered voltage is 12.5 kV. The metering current transformers are located in each feeder bay The metering potential transformer is located on the 12.5 kV operating bus.
8. **One Line Diagram Attached:** Yes
9. **Description of Facilities Owned by Each Party:**

City of Lexington owns:

  - Two (2) distribution circuits including dead-end insulators that attach to the dead-end structure, conductor, and hardware
  - One (1) distribution circuit breaker LX-60 with associated foundation, jumpers, relaying and cabling

LCRA TSC owns:

  - The Lexington Substation including, but not limited to, the following items:
  - One (1) circuit switcher CS-5725 including bypass switch 5727 and disconnect switch 5724
  - One (1) power transformer PWT-1, T-1 with associated surge arresters
  - One (1) single phase current transformer CT-6

- Five (5) distribution and total bays including A-frames, trusses, insulators, disconnect switches, surge arresters, 12.5 kV operating and transfer bus, bus potential transformer, and metering current transformers
- One(1) distribution circuit breaker LX-20 and associated foundation, jumpers, relaying and cabling
- Station Service SS-1 and SS-2
- Control house with battery

**Grandfathered to the City**

- One (1) distribution circuit breaker LX-20, with associated foundation, jumpers, relaying, control panel, and cabling

**10. Operational Responsibilities of Each Party:**

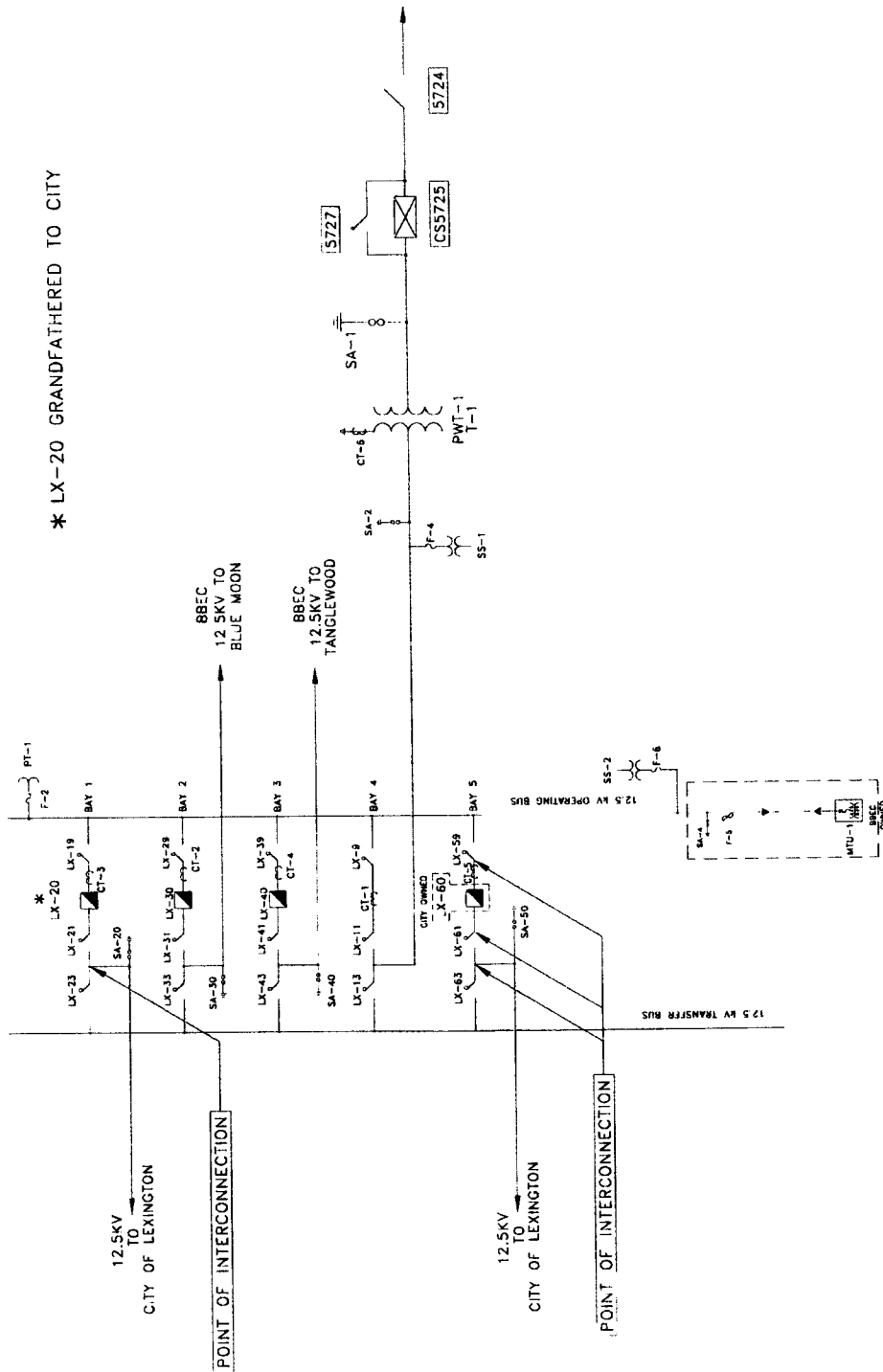
- The City will be responsible for the operation of the two (2) distribution circuit breakers serving the City feeders.
- LCRA TSC will be responsible for the operation from the low voltage bus through the power transformer to the high voltage equipment.

**11. Maintenance Responsibilities of Each Party:** Each Party will be fully responsible for the maintenance of the equipment it owns.

**12. Other Terms and Conditions:**

- **Definition of Grandfathered Distribution Breaker:**  
In the past, Lower Colorado River Authority furnished one (1) breaker or other protective device for each point of delivery, per the Wholesale Power Agreement with a wholesale customer. These devices were transferred to LCRA TSC as part of the unbundling process and remain the property of LCRA TSC until such time that replacement of this equipment is required. At that time the City has the responsibility to furnish replacement equipment.
- The City and LCRA TSC are to share access to the substation by LCRA TSC locks in the gate and in the control house doors.

# LEXINGTON ONE-LINE DIAGRAM



LEXINGTON SUBSTATION

THIS IS NOT A COMPLETE ONE-LINE DIAGRAM  
FOR A COMPLETE ONE-LINE DIAGRAM OF THIS  
SUBSTATION, REFER TO DWG. S152-E-2.