



Control Number: 35077



Item Number: 888

Addendum StartPage: 0

**Project No. 35077**

**RECEIVED**

**2018 NOV 15 PM 4:24**

**Amendment No. 7**

**PUBLIC UTILITY COMMISSION  
FILING CLERK**

**INTERCONNECTION AGREEMENT**

**Between**

**LCRA Transmission Services Corporation**

**and**

**Rio Grande Electric Cooperative, Inc.**

**October 22, 2018**

This page intentionally left blank

**SEVENTH AMENDMENT TO  
INTERCONNECTION AGREEMENT**

This Seventh Amendment ("Amendment") is made and entered into this 22nd day of October, 2018, between Rio Grande Electric Cooperative, Inc. ("RGEC") and LCRA Transmission Services Corporation ("LCRA TSC"), collectively referred to hereinafter as the Parties.

**WHEREAS**, LCRA TSC and RGEC entered into that certain Interconnection Agreement executed October 5, 2006, as amended by that certain Amendment No. 1, executed as of June 22, 2011, as amended by that certain Amendment No. 2, executed as of May 28, 2015, as amended by that certain Amendment No. 3, executed as of July 17, 2015, as amended by that certain Amendment No. 4, executed as of October 16, 2015, as amended by that certain Amendment No. 5, executed as of May 11, 2017, as amended by that certain Amendment No. 6, executed as of December 1, 2017 (collectively, as amended, the "Agreement"), and

**WHEREAS**, this amendment is necessary because LCRA TSC and RGEC wish to amend the facility schedule for Pinto Creek, and;

**WHEREAS**, LCRA TSC will purchase the Wingarten Substation and RGEC will install distribution breakers;

**NOW, THEREFORE**, in consideration of the mutual promises and undertakings herein set forth, the Parties agree to amend the Agreement as follows:

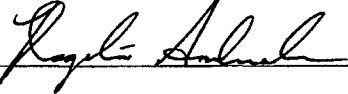
1. Exhibit "A" attached to the Agreement is deleted in its entirety and the Exhibit "A" attached to this Seventh Amendment is hereby added to the Agreement in lieu thereof.
2. Facility Schedule No. 3 (including the diagrams attached thereto) is deleted in its entirety and facility schedule no. 3 attached to this Seventh Amendment is hereby added to the Agreement in lieu thereof.
3. Facility Schedule No. 3 (including the diagrams attached thereto) attached to this Seventh Amendment will become effective upon execution of this Seventh Amendment by the Parties.
4. Facility Schedule No. 4 (including the diagrams attached thereto) attached to this Seventh Amendment is hereby added to the Agreement.
5. Facility Schedule No. 4 (including the diagrams attached thereto) attached to this Seventh Amendment will become effective upon execution of this Seventh Amendment by the Parties.

Except as otherwise expressly provided for herein, the Agreement will continue in full force and effect in accordance with its terms.

----The remainder of this page has intentionally been left blank----

IN WITNESS WHEREOF, the Parties have caused this Seventh Amendment to be executed in several counterparts, each of which shall be deemed an original but all shall constitute one and the same instrument.

RIO GRANDE ELECTRIC  
COOPERATIVE, INC.

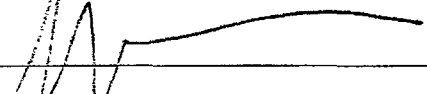
By: 

Name: Roger Andrade

Title: General Manager / CEO

Date: 10/22/2018

LCRA TRANSMISSION SERVICES  
CORPORATION

By: 

Name: Sergio Garza, P.E.

Title: LCRA Vice President,  
Transmission Design and Protection

Date: 10/15/2018



**Exhibit A**  
**Amendment No. 7**

<b>FACILITY SCHEDULE NO.</b>	<b>LOCATION OF POINT(S) OF INTERCONNECTION (# of Points)</b>	<b>INTERCONNECTION VOLTAGE (KV)</b>	<b>EFFECTIVE DATE OF INTERCONNECTION</b>
1	Rosita Creek (1)	138 kV	10/16/2015
2	Blewett (6)	24.9 kV	5/11/2017
3	Pinto Creek (6)	24.9 kV	Date of 7 <sup>th</sup> amendment
4	Wingarten (6)	24.9 kV	Date of 7 <sup>th</sup> amendment
5			
6			
7			
8			
9			
10			
11			
12			
13			
14			
15			
16			
17			
18			
19			
20			
21			
22			
23			
24			
25			
26			
27			
28			
29			
30			
31			
32			
33			
34			
35			

**FACILITY SCHEDULE NO. 3**  
**Amendment No. 7**

1. **Name:** Pinto Creek Substation
2. **Facility Location:** LCRA TSC's Pinto Creek Substation is located 9 miles west of Brackettville, Texas at 9208 W US Hwy 90 Del Rio, Texas, Kinney County. Pinto Creek Substation is connected to the 138 kV transmission line from Brackettville Substation to Hamilton Road Substation.
3. **Point of Interconnection:** There are six (6) Points of Interconnection in Pinto Creek Substation generally described as:
  - where the incoming distribution line connects to the tubular bus between switches PC131 and PC133 at breaker PC130.
  - where the jumper from breaker PC130 connects to the 4 hole pad on switch PC131.
  - where the jumper from breaker PC130 connects to the 4 hole pad on switch PC129.
  - where the incoming distribution line connects to the tubular bus between switches PC141 and PC143 at breaker PC140.
  - where the jumper from breaker PC140 connects to the 4 hole pad on switch PC141.
  - where the jumper from breaker PC140 connects to the 4 hole pad on switch PC139.
4. **Transformation Services Provided by LCRA TSC:** Yes, per Transformation Service Agreement between the Parties.
5. **Metering Services Provided by LCRA TSC:** Yes, per Wholesale Metering Service Agreement between the Parties.
6. **Delivery Voltage:** 24.9 kV
7. **Metered Voltage and Location:** The metered voltage is 24.9 kV utilizing metering current transformers located inside power transformer T1 and metering potential transformers located on the 24.9 kV operating bus.
8. **One Line Diagram Attached:** Yes
9. **Description of Facilities Owned by Each Party:**

RGEC owns the following equipment (see attached one-line for details);

  - All 24.9 kV distribution circuit breakers including jumpers, protective relay packages and foundations.
  - All 24.9 kV distribution circuits with associated 24.9 kV surge arresters
  - One (1) MTU and associated fuse F3
  - Underfrequency relay panel (if required)

LCRA TSC owns the following equipment (see attached one-line for details);  
The Pinto Creek Substation, including but not limited to, the following items:

  - One (1) 138 kV circuit switcher disconnect switch 29424

- One (1) 138 kV circuit switcher CS29425 and associated bypass switch 29427
- One (1) power transformer T1 with associated surge arresters, foundation and protective relay package
- One (1) 24.9 kV transformer bus disconnect switch PC01
- All distribution and total bays including A-frames, trusses, insulators, disconnect switches, bus tie switches, bus potential transformers, 24.9 kV operating and transfer bus and associated cabling
- One (1) meter panel with meters
- Two (2) station service 138 kV PVT1 and SS2 with associated fuse F2
- One (1) control house (24' X 42'), battery bank and battery charger and other appurtenances
- Substation property, ground grid, gravel, fencing and other appurtenances

**10. Operational Responsibilities of Each Party:**

- Each Party is responsible for the operation of the equipment it owns.

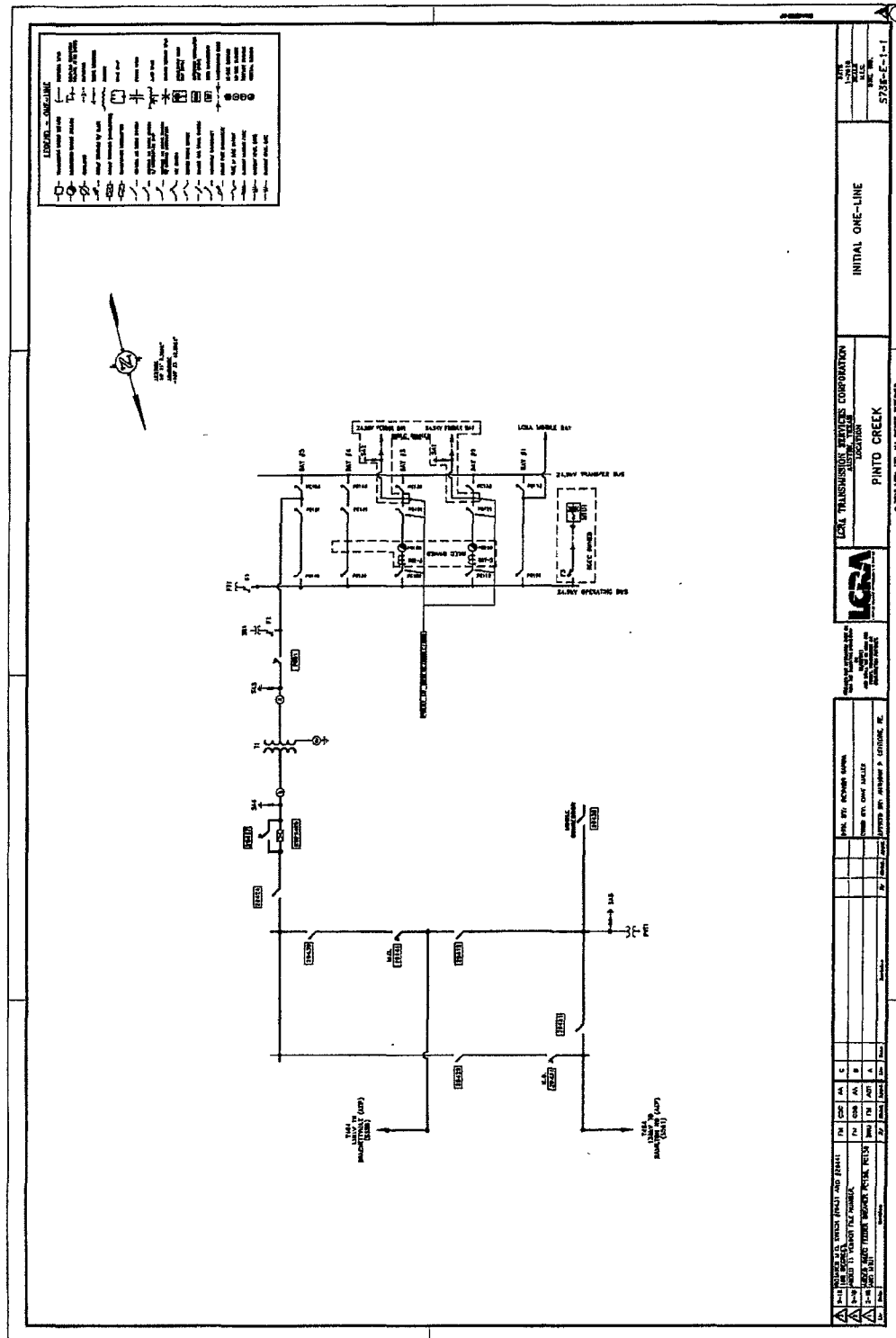
**11. Maintenance Responsibilities of Each Party:** Each Party will be fully responsible for the maintenance of the equipment it owns.

**12. Other Terms and Conditions:**

- LCRA TSC will share access to the substation by allowing RGEC to place a hardened lock in series with LCRA TSC's lock in the chain securing the gate.
- LCRA TSC will share access to the control house. Access is obtained by calling LCRA TSC's System Operations Control Center using the intercom at the door of the control house.
- LCRA TSC will provide RGEC access to 125 VDC and 120 VAC power. Circuits must have over current protection devices (OCPD) sized according to NEC standards.
- LCRA TSC will provide RGEC with floor space (as necessary) in its control house for the installation of RGEC required relay panel boards and equipment.
- Pinto Creek Substation access and physical security will be in accordance with LCRA TSC standards.



### Amendment No. 7



**FACILITY SCHEDULE NO. 4**  
**Amendment No. 7**

13. **Name:** Wingarten Substation
14. **Facility Location:** LCRA TSC's Wingarten Substation is located approximately 10 miles north of Crystal City, Texas on US Highway 83. The physical address is 11344 N. US Highway 83, Crystal City, Texas, in Zavala County. Wingarten Substation is connected to the 69 kV transmission line from AEP's La Pryor Substation to AEP's Turtle Creek Substation.
15. **Point of Interconnection:** There are six (6) Points of Interconnection in Wingarten Substation generally described as:
- where the incoming distribution line connects to the tubular bus between switches WG111 and WG113 at breaker WG110.
  - where the jumper from breaker WG110 connects to the 4 hole pad on switch WG111.
  - where the jumper from breaker WG110 connects to the 4 hole pad on switch WG109.
  - where the incoming distribution line connects to the tubular bus between switches WG121 and WG123 at breaker WG120.
  - where the jumper from breaker WG120 connects to the 4 hole pad on switch WG121.
  - where the jumper from breaker WG120 connects to the 4 hole pad on switch WG119.
16. **Transformation Services Provided by LCRA TSC:** Yes, per Transformation Service Agreement between the Parties.
17. **Metering Services Provided by LCRA TSC:** Yes, per Wholesale Metering Service Agreement between the Parties.
18. **Delivery Voltage:** 24.9 kV
19. **Metered Voltage and Location:** The metered voltage is 24.9 kV utilizing metering current transformers and metering potential transformers located on the 24.9 kV transformer structure.
20. **One Line Diagram Attached:** Yes
21. **Description of Facilities Owned by Each Party:**  
RGEC owns the following equipment (see attached one-line for details);
- All 24.9 kV distribution circuit breakers including jumpers, protective relay packages and foundations.
  - All 24.9 kV distribution circuits with associated 24.9 kV surge arresters
  - One (1) composite communications pole

LCRA TSC owns the following equipment (see attached one-line for details);

The Wingarten Substation, including but not limited to, the following items:

- One (1) 69 kV motor operated disconnect switch 33204
- One (1) 69 kV circuit switcher CS33205 and associated bypass switch 33207
- One (1) power transformer T1 with associated surge arresters, foundation and protective relay package
- One (1) 24.9 kV transformer bus motor operated disconnect switch WG01
- All distribution and total bays including A-frames, trusses, insulators, disconnect switches, bus tie switches, bus potential transformers, 24.9 kV operating and transfer bus and associated cabling
- One (1) meter panel with meters
- One (1) station service SS1 with associated fuse F1
- One (1) control house (14' X 24'), battery bank and battery charger and other appurtenances
- Substation ground grid, gravel, fencing and other appurtenances

**22. Operational Responsibilities of Each Party:**

- Each Party is responsible for the operation of the equipment it owns.

**23. Maintenance Responsibilities of Each Party:** Each Party will be fully responsible for the maintenance of the equipment it owns.

**24. Other Terms and Conditions:**

- LCRA TSC will share access to the substation by allowing RGEC to place a hardened lock in series with LCRA TSC's lock in the chain securing the gate.
- LCRA TSC will share access to the control house. Access is obtained by calling LCRA TSC's System Operations Control Center using the intercom at the door of the control house.
- LCRA TSC will provide RGEC access to 125 VDC and 120 VAC power. Circuits must have over current protection devices (OCPD) sized according to NEC standards.
- LCRA TSC will provide RGEC with floor space (as necessary) in its control house for the installation of RGEC required relay panel boards and equipment.
- Wingarten Substation access and physical security will be in accordance with LCRA TSC standards.

## Amendment No. 7

