



Control Number: 35077



Item Number: 801

Addendum StartPage: 0

35077

RECEIVED

AMENDMENT NO. 2 TO 2018 MAR -5 AM 10:03
INTERCONNECTION AGREEMENTPUBLIC UTILITY COMMISSION
FILING CLERK

This Amendment ("Amendment") to the Interconnection Agreement, dated January 10, 2013, between Oncor Electric Delivery Company LLC ("Oncor"), a Delaware limited liability company and Texas-New Mexico Power Company ("TNMP" or "Customer") ("Agreement") is made and entered into this 3RD day of NOVEMBER, 2015 between Oncor and TNMP, individually referred to hereinafter as a Party and collectively as Parties. In consideration of the mutual promises and undertakings herein set forth, the Parties hereby agree to amend the Agreement as follows:

1. The Exhibit A "List of Facility Schedules and Points of Interconnection" to the Agreement is deleted in its entirety and replaced with the Exhibit A attached hereto and made a part hereof.
2. Facility Schedule No. 29 (Mason 21.6 kV) attached hereto is hereby added to the Agreement.

IN WITNESS WHEREOF, the Parties have caused this Amendment to be executed in several counterparts, each of which shall be deemed an original but all shall constitute one and the same instrument.

Oncor Electric Delivery Company LLC

Texas-New Mexico Power Company

BY: [Signature]BY: [Signature]NAME: TERRY PRUNINGERNAME: Keith NixTITLE: S.R. DIRECTORTITLE: Vice PresidentDATE: 11/3/2015DATE: 10/1/15

801

EXHIBIT A

LIST OF FACILITY SCHEDULES AND POINTS OF INTERCONNECTION

FACILITY SCHEDULE NO.	NAME OF POINT OF INTERCONNECTION	INTERCONNECTION VOLTAGE (KV)	TYPE OF INTERCONNECTION
1	Bells	69	Bi-directional
2	Clay County	69	Uni-directional
3	Cooke County	69	Uni-directional
4	Deport	25	Uni-directional
5	Emory	12.5	Uni-directional
6	Flower Mound	12.5	Uni-directional
7	Graham	69	Uni-directional
8	Highlands	138/138	Bi-directional
9	Jones Street	138/138	Bi-directional
10	Krugerville	138/25	Bi-directional
11	Lakepointe	138	Bi-directional
12	NW Carrollton	138	Bi-directional
13	Olney	69/69	Bi-directional
14	Princeton	138/138	Uni-directional
15	Ranger	69	Uni-directional
16	Rio Vista	138	Uni-directional
17	Rivercrest	69	Uni-directional
18	South Bend	12.5	Uni-directional
19	Talco	138	Bi-directional
20	TNP One	345/345	Bi-directional
21	Twin Oak	345/345	Bi-directional
22	Walnut Springs	69	Bi-directional
23	Permian Basin	69	Bi-directional
24	Whitney	138/138	Bi-directional
25	Wink 138 kV	138	Bi-directional
26	Wink 69 kV	69	Bi-directional
27	Barstow NW	69	Uni-directional
28	Blossom	138	Uni-directional
29	Mason	21.6	Uni-directional

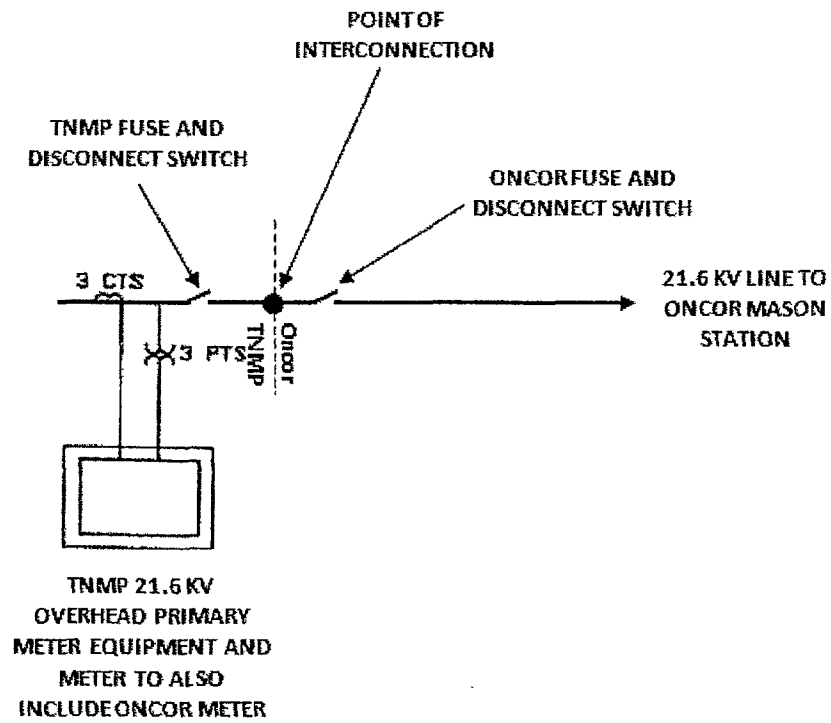
FACILITY SCHEDULE NO. 29

1. **Name:** Mason
2. **Point of Interconnection location:**
Adjacent to the east side of Hwy 302 approximately 615 feet north east of the intersection of FM 302 and FM 285 in Reeves County, Texas near latitude 31.640410N and longitude 103.642832W where TNMP's 21.6 kV distribution line and Oncor's 21.6 kV distribution line interconnect on Oncor's distribution pole (GLNX: 1868997, GLNY: 3190587). Specifically, the Point of Interconnection is where Oncor's jumpers attach to TNMP's jumper pads. (see attached one line diagram)
3. **Delivery voltage:** 21.6 kV
4. **Metering (voltage, location, losses adjustment due to metering location, and other):**
All metering shall meet the applicable provisions of the ERCOT Operating Guides or its successor in function ("ERCOT Operating Guides") and the ERCOT protocols. Metering is accomplished using 21.6 kV potential and current metering accuracy instrument transformers located on TNMP's 21.6 kV distribution line at the Point of Interconnection. The meter will not require loss compensation adjustment for the Point of Interconnection. The metering equipment described in Item 7 herein will be used to invoice TNMP for Wholesale Distribution Line Service from Oncor under Oncor's Wholesale Tariff for Transmission Service and to measure the line flow between Parties. The meter will be powered by one of the 21.6 kV potential transformers identified in Item 7.
5. **Normally closed (check one):** ☒ Yes / ☐ No
6. **One line diagram attached (check one):** ☒ Yes / ☐ No
7. **Facilities to be furnished by Oncor:**
 - a. Oncor will furnish and own its 21.6 kV distribution line from Oncor's Mason Substation to the Point of Interconnection.
 - b. Telemetry consisting of a primary meter. Oncor's primary meter to be located on TNMP's distribution pole described in item 8 and connected to TNMP's 21.6 kV metering accuracy potential transformers and three metering accuracy current transformers described in item 8.
8. **Facilities to be furnished by TNMP:**
 - a. TNMP will own and furnish a distribution pole and a single span of 21.6 kV distribution line from the Point of Interconnection.
 - b. Telemetry consisting of three 21.6 kV metering accuracy potential transformers, three metering accuracy current transformers, a primary meter, associated conduit and cable, hardware.
9. **Cost Responsibility:**
Each Party shall be responsible for all costs it incurs associated with facilities it owns at, connected to, or associated with, the Point of Interconnection, including, but not limited

to, costs associated with the ownership, engineering, procurement, construction, operation, maintenance, replacement, repair and testing of such facilities provided, however, that this Item 9 is subject to any liability and indemnity provisions of the Agreement. This Item 9 shall not relieve either Party of its respective obligations under those provisions of the Agreement.

10. **Supplemental terms and conditions attached (check one):** _____ Yes / ☒ No

FACILITY SCHEDULED NO. 29
MASON POINT OF INTERCONNECTION
ONE-LINE DIAGRAM



FACILITY SCHEDULED NO. 29
MASON POINT OF INTERCONNECTION
SITE MAP

