

Control Number: 35077



Item Number: 750

Addendum StartPage: 0

Project No. 35077

RECEIVED
2017 AUG -4 PM 4:10
PUBLIC UTILITY COMMISSION
FILING CLERK

First Amendment

INTERCONNECTION AGREEMENT

Between

LCRA Transmission Services Corporation

and

Golden Spread Electric Cooperative, Inc.

July 5, 2017

750 1

**FIRST AMENDMENT TO
INTERCONNECTION AGREEMENT**

07/05/2017 (2)

This First Amendment ("Amendment") is made and entered into this 26 day of June, 2017, between Golden Spread Electric Cooperative Inc. ("GSEC") and LCRA Transmission Services Corporation ("LCRA TSC") collectively referred to hereinafter as the Parties.

WHEREAS, LCRA TSC and GSEC entered into that certain Interconnect Agreement executed June 16, 2014,

WHEREAS, Taylor Electric Cooperative, Inc. ("TEC") is an owner of electrical facilities within the McElmurray Substation and has a separate Interconnection Agreement with LCRA TSC,

WHEREAS, TEC added a power transformer (T2), with distribution circuits at McElmurray Substation splitting the substation into two fenced sections owned by different Parties and requiring separate Interconnection Agreements with each. GSEC owns McElumurray 12.47 kV T1 and associated facilities and TEC owns McElmurray 24.9 kV T2 and associated facilities,

WHEREAS, the LCRA TSC added a control house and certain other equipment and facilities at McElmurray Substation on GSEC's property; and

~~**WHEREAS**, LCRA TSC will install a 3 breaker ring bus at McElmurray Substation.~~

NOW, THEREFORE, in consideration of the mutual promises and undertakings herein set forth, the Parties agree to amend the Agreement as follows:

1. Exhibit "A" is deleted in its entirety and the Exhibit "A" attached to this First Amendment is hereby added to the Agreement in lieu thereof.
2. Facility Schedule No. 2 (including the diagrams attached thereto) is deleted in its entirety and Facility Schedule No. 2 attached to this First Amendment is hereby added to the Agreement in lieu thereof.
3. Facility Schedule No. 2 (including the diagrams attached thereto) attached to this First Amendment will become effective upon execution of this First Amendment by the Parties.

Except as otherwise expressly provided for herein, the Agreement will continue in full force and effect in accordance with its terms.

---The remainder of this page has intentionally been left blank---

IN WITNESS WHEREOF, the Parties have caused this First Amendment to be executed in several counterparts, each of which shall be deemed an original but all shall constitute one and the same instrument.

GOLDEN SPREAD ELECTRIC
COOPERATIVE, INC.


By: 

Name: Stephen Cross

Title: Vice President, Engineering

Date: 6/29/17

LCRA TRANSMISSION SERVICES
COOPERATION

By: 

Name: Sergio Garza, P.E.

Title: LCRA Vice President, Transmission
Design and Protection

Date: 07/05/2017



EXHIBIT A

Amendment No. 1

[illegible]

FACILITY SCHEDULE NO 2

Amendment No. 1

1. **Name:** McElmurray
2. **Facility Location:** GSEC's McElmurray Substation is located approximately 2.0 miles south of Trent Texas at the intersections of county road 368, and county road 611 in Taylor County, Texas.
3. **Points of Interconnection:** The substation is connected to the LCRA TSC's 138kV transmission line from AEP's South Abilene to the Taylor-Nolan county line (customers section of line terminates in customers Eskota Substation). There is one (1) Point of Interconnection which is defined as:
 - where the LCRA TSC 138 kV jumper attaches to the GSEC conductor at LCRA TSC's transmission pole.
4. **Transformation Service Provided by LCRA TSC:** No
5. **Metering Services Provided by LCRA TSC:** No.
6. **Delivery Voltage:** 138 kV

7. **Metered Voltage and Location:** N/A

8. **One Line Diagram Attached:** Yes

9. **Description of Facilities Owned by Each Party:**

GSEC owns the following equipment (see attached one-line for details);

- All the distribution facilities in the GSEC McElmurray Substation associated with the 12.47 kV transformer T1
- One (1) control house (24' x 18') with battery bank, battery charger and appurtenances
- One (1) power transformer T1 with associated surge arresters, foundations, jumpers and protective relaying
- One (1) set of regulators REG1
- One (1) mobile transformer disconnect switch 19118
- The 138 kV transmission line, including dead end insulators and mounting hardware on LCRA TSC's transmission pole, from LCRA TSC's transmission pole to GSEC's isolating switch 19114
- One (1) circuit switcher CS19115 with associated disconnect and bypass switches 19114 and 19117, foundation, jumpers and protective relaying
- One (1) meter and meter panel for transformer T1
- Two (2) sets of 12.5 kV metering bus potential transformers PT1 and PT2
- One (1) set of 12.5 kV metering current transformers
- One (1) station service SS1

- Substation property ground grid, gravel, fencing and other appurtenances

LCRA TSC owns the following equipment (see attached one-line for details);

- One (1) transmission pole at the Points of Interconnection
- Jumpers from LCRA TSC's 138 kV conductors to GSEC's 138 kV conductors at the Points of Interconnection
- Three (3) 138kV A-frames dead end structures
- 138 kV ring bus including structures, foundations, insulators, connecting hardware and jumpers
- Three (3) 138 kV circuit breakers 28380, 28390 and 28400 with foundations, jumpers and protective relaying
- Six (6) 138 kV disconnect switches 28379, 28381, 28389, 28391, 28399 and 28401
- Two (2) coupling capacitor voltage transformers CCVT1 and CCVT2
- Three (3) 138 kV surge arresters SA1, SA2 and SA13
- Two (2) 138 kV wave traps with tuners WT1 and WT2
- One (1) 138 kV power voltage transformer PVT1
- One (1) 138 kV dual core relaying current transformer CT7
- One (1) 138kV bus, insulators, supports, and associated hardware
- One (1) 138 kV transformer bus differential and breaker failure relaying scheme
- One (1) Remote Terminal Unit (RTU)
- ~~One (1) control house (24' x 42') with battery bank, battery charger and appurtenances on the GSEC substation property~~

10. Operational Responsibilities of Each Party:

Each Party shall operate and control the facilities it owns.

11. Maintenance Responsibilities of Each Party:

Each Party shall be fully responsible for the maintenance of the facilities it owns.

12. Other Terms and Conditions:

- Coordination and response to the ERCOT under-frequency or under-voltage load shedding program is the responsibility of GSEC's Member distribution electric cooperative served through the Point of Interconnection.
- GSEC is responsible to report to ERCOT all annual load data requests.
- LCRA TSC is responsible to provide ERCOT with the required operational data, including, but not limited to real time operational flows and the status of the transmission facilities.
- LCRA TSC shall be responsible for the ERCOT model configuration, naming, and numbering convention. This includes, but is not limited to, substation name, transmission bus number, transmission equipment names, transmission equipment numbering, and normal operation configuration.
- Each Party will provide to the other Party as-built drawings of the facilities it

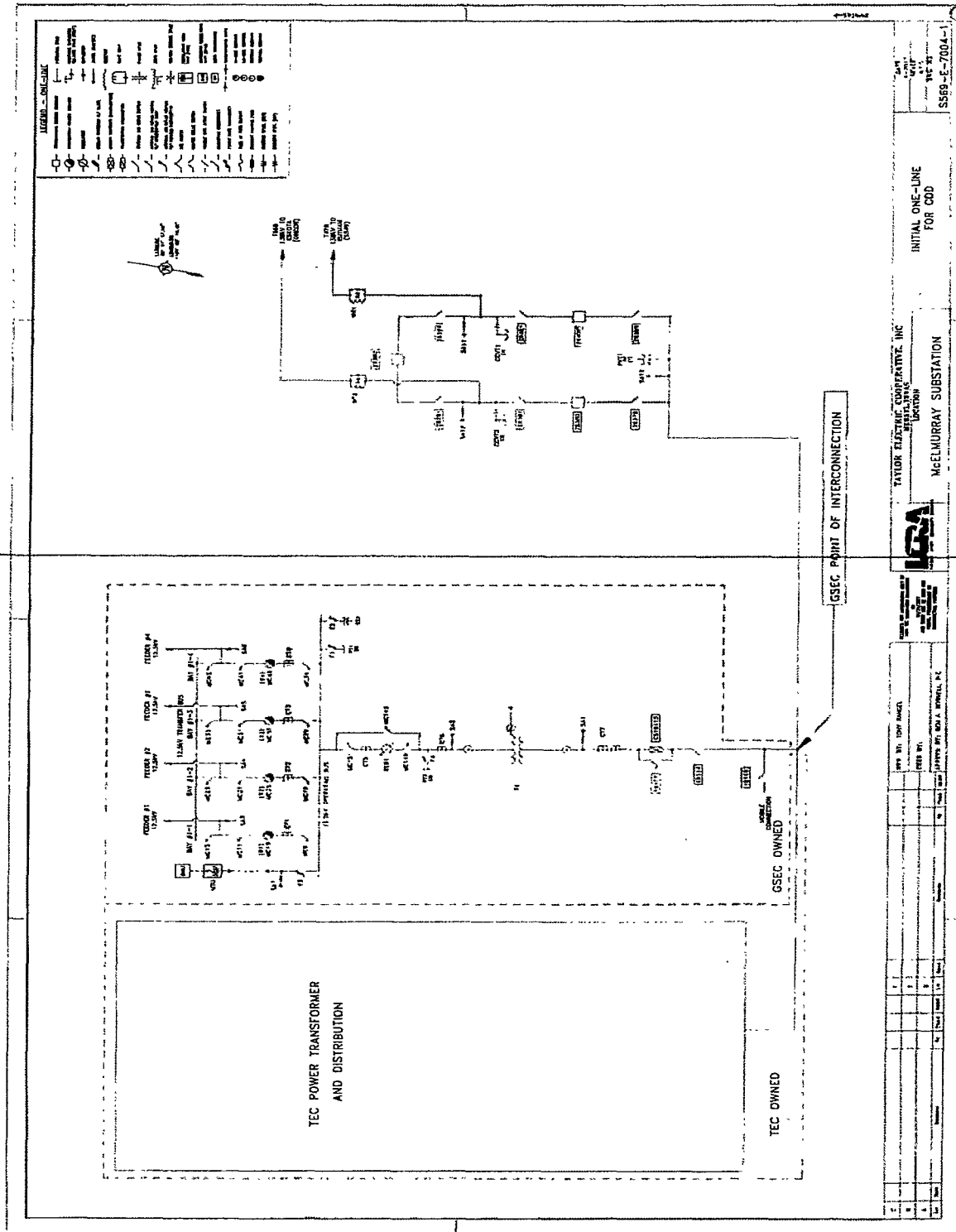
owns in the substation. Should future revisions or updates be made to such drawings, the Party making such revisions or updates shall provide the other Party with revised as-built drawings.

- GSEC grants to LCRA TSC a revocable license to erect and maintain necessary supporting transmission structures on GSEC's right-of-way as shown in the descriptions and drawings attached as part of this Facility Schedule No. 2. GSEC agrees that this license shall be a condition of providing transmission service to GSEC and TEC at this interconnect point.
 - GSEC will supply a phone circuit currently in GSEC's control house, by LCRA TSC adding a phone switch and extending a circuit into LCRA TSC's control house for TEC and GSEC use
 - LCRA TSC will install free standing relaying current transformers CT7 between transformer T1 and circuit switcher CS19115
 - LCRA TSC will supply and allow GSEC to use relaying current transformer CT7 in GSEC's transformer T1 transformer differential relaying scheme in order to assure overlapping zones of protection with LCRA TSC's 138 kV bus differential & breaker failure relaying scheme.
 - LCRA TSC will provide tripping and close inhibit contacts from its 138 kV transformer bus differential & breaker failure relaying panel to GSEC circuit switcher CS19115 relaying panel.
 - GSEC will provide breaker failure initiate contacts from its circuit switcher CS19115 relaying panel to LCRA TSC's 138 kV transformer bus differential & breaker failure relaying panel.
-
- LCRA TSC will allow GSEC to feed power to GSEC's control house from LCRA TSC's control house AC panel board.
 - LCRA TSC and GSEC shall design, provide, and coordinate their respective protection system equipment so that adjacent zones of protection overlap, in accordance with ERCOT Nodal Operating Guides.

****The remainder of this page has intentionally been left blank****

One Line Drawing

Amendment No. 1



Point of Interconnection Drawing Amendment No. 1

