



Control Number: 35077



Item Number: 749

Addendum StartPage: 0

**Project No. 35077**

RECEIVED  
2017 AUG -3 PM 4:13  
PUBLIC UTILITY COMMISSION  
FILING CLERK

**Second Amendment**

**INTERCONNECTION AGREEMENT**

**Between**

**LCRA Transmission Services Corporation**

**and**

**City of Goldthwaite**

**July 3, 2017**

749

## **SECOND AMENDMENT TO INTERCONNECTION AGREEMENT**

This Second Amendment ("Amendment") is made and entered into this 3<sup>rd</sup> day of July, 2017, between the City of Goldthwaite ("City") and the LCRA Transmission Services Corporation ("LCRA TSC") collectively referred to hereinafter as the Parties.

**WHEREAS**, LCRA TSC and the City entered into that certain Interconnection Agreement dated August 5, 2008, as amended by that certain Amendment No. 1, executed as of December 23, 2008 (collectively, as amended, the "Agreement"),

**WHEREAS**, LCRA TSC removed switch 6511, added a PVT and reconfigured the circuit switcher connection at Goldthwaite Substation; and

**WHEREAS**, LCRA TSC is removing certain 138 kV assets from the one line drawing and facility schedule which are not relevant to the Points of Interconnection.

**NOW, THEREFORE**, in consideration of the mutual promises and undertakings herein set forth, the Parties agree to amend the Agreement as follows:

1. Exhibit "A" attached to the Agreement is deleted in its entirety and the Exhibit "A" attached to this Second Amendment is hereby added to the Agreement in lieu thereof.
2. Facility Schedule No. 1 (including the diagrams attached thereto) is deleted in its entirety and Facility Schedule No. 1 attached to this Second Amendment is hereby added to the Agreement in lieu thereof.
3. Facility Schedule No. 1 (including the diagrams attached thereto) attached to this Second Amendment will become effective upon execution of this Second Amendment by the Parties.

Except as otherwise expressly provided for herein, the Agreement will continue in full force and effect in accordance with its terms.

– Remainder of page has intentionally been left blank. –

IN WITNESS WHEREOF, the Parties have caused this Second Amendment to be executed in several counterparts, each of which shall be deemed an original but all shall constitute one and the same instrument.

CITY OF GOLDTHWAITE

LCRA TRANSMISSION SERVICES  
CORPORATION

By: 

By: \_\_\_\_\_

Name: Robert Lindsey III

Name: Sergio Garza, P.E.

Title: City Manager

Title: LCRA Vice President, Transmission  
Protection and Design

Date: 6-26-17

Date: \_\_\_\_\_



IN WITNESS WHEREOF, the Parties have caused this Second Amendment to be executed in several counterparts, each of which shall be deemed an original but all shall constitute one and the same instrument.

CITY OF GOLDTHWAITE

LCRA TRANSMISSION SERVICES  
CORPORATION

By:

By: 

Name: Rob Lindsey III

Name: Sergio Garza, P.E.

Title: City Manager

Title: LCRA Vice President, Transmission  
Protection and Design

Date: \_\_\_\_\_

Date: 07/03/2017



**EXHIBIT A**  
Amendment No. 2

[illegible]

## **FACILITY SCHEDULE NO. 1**

### **Amendment No. 2**

- 1. Name:** Goldthwaite Substation
- 2. Facility Location:** The Goldthwaite Substation is located at 131 US HWY 183 S., Goldthwaite, Mills County, Texas 76844.
- 3. Points of Interconnection:** There are six (6) Points of Interconnection in the Goldthwaite Substation generally described as:
  - where the incoming distribution line connects to the tubular bus between switches GO21 and GO23 at breaker GO20.
  - where the jumper from breaker GO20, passing through CT5, connects to the four hole pad on switch GO19.
  - where the jumper from breaker GO20 connects to the four hole pad on switch GO21.
  - where the incoming distribution line connects to the tubular bus between switches GO31 and GO33 at breaker GO30.
  - where the jumper from breaker GO30, passing through CT6, connects to the four hole pad on switch GO29.
  - where the jumper from breaker GO30 connects to the four hole pad on switch GO31.
- 4. Transformation Services Provided by LCRA TSC:** Yes, per Transformation Service Agreement between the Parties.
- 5. Metering Services Provided by LCRA TSC:** Yes, per Wholesale Metering Services Agreement between the Parties.
- 6. Delivery Voltage:** 12.5 kV
- 7. Metered Voltage and Location:** The metered voltage is 12.5 kV, the metering current transformers are located in each distribution bay and a total metering current transformer is located in the regulator bay. The metering potential transformer is located on the 12.5 kV operating bus.
- 8. One Line Diagram Attached:** Yes
- 9. Description of Facilities Owned by Each Party:**

City of Goldthwaite owns:

  - Two (2) distribution circuits including dead-end insulators that attach to the dead-end structure, conductors, and hardware
  - Two (2) distribution circuit breakers GO20 and GO30 including associated foundations, jumpers, and protection packages

LCRA TSC owns:

The Goldthwaite Substation including, but not limited to, the following items:

- Substation property, ground grid, gravel, fencing and other appurtenances
- One (1) transformer T1 with associated surge arresters, foundation, jumpers and protective relaying
- One (1) circuit switcher CS6515 with bypass switch 6517 foundation, jumpers and protective relaying
- Two (2) relaying current transformers CT7 and CT8
- One (1) single phase current transformer CT9
- Five (5) 12.5 kV metering current transformers CT4, CT5 and CT6
- One (1) 12.5 kV metering potential transformer, PT3 and fuse F2
- One (1) metering package
- One (1) 12.5 kV total bay 4 including buswork, 12.5 kV hook stick switches and three single phase voltage regulators REG1
- One (1) 12.5 kV transformer bus switch G001
- Structures, structure foundations, operating and transfer buses for all City distribution bays
- Two (2) 12.5 kV mobile transformer hook-up points with switches 9083 and 9089
- Three (3) distribution and total bays including A-frames, trusses, insulators, disconnect switches, surge arresters, 12.5 kV operating and transfer bus, bus potential transformers, and metering current transformers
- One (1) underfrequency relay panel
- One (1) station service transformer SS2 with fuse F3
- One (1) control / metering house with air conditioner and appurtenances

**10. Operational Responsibilities of Each Party:** Each Party will be responsible for the operation of the equipment it owns.

**11. Maintenance Responsibilities of Each Party:** Each Party will be fully responsible for the maintenance of the equipment it owns.

**12. Other Terms and Conditions:**

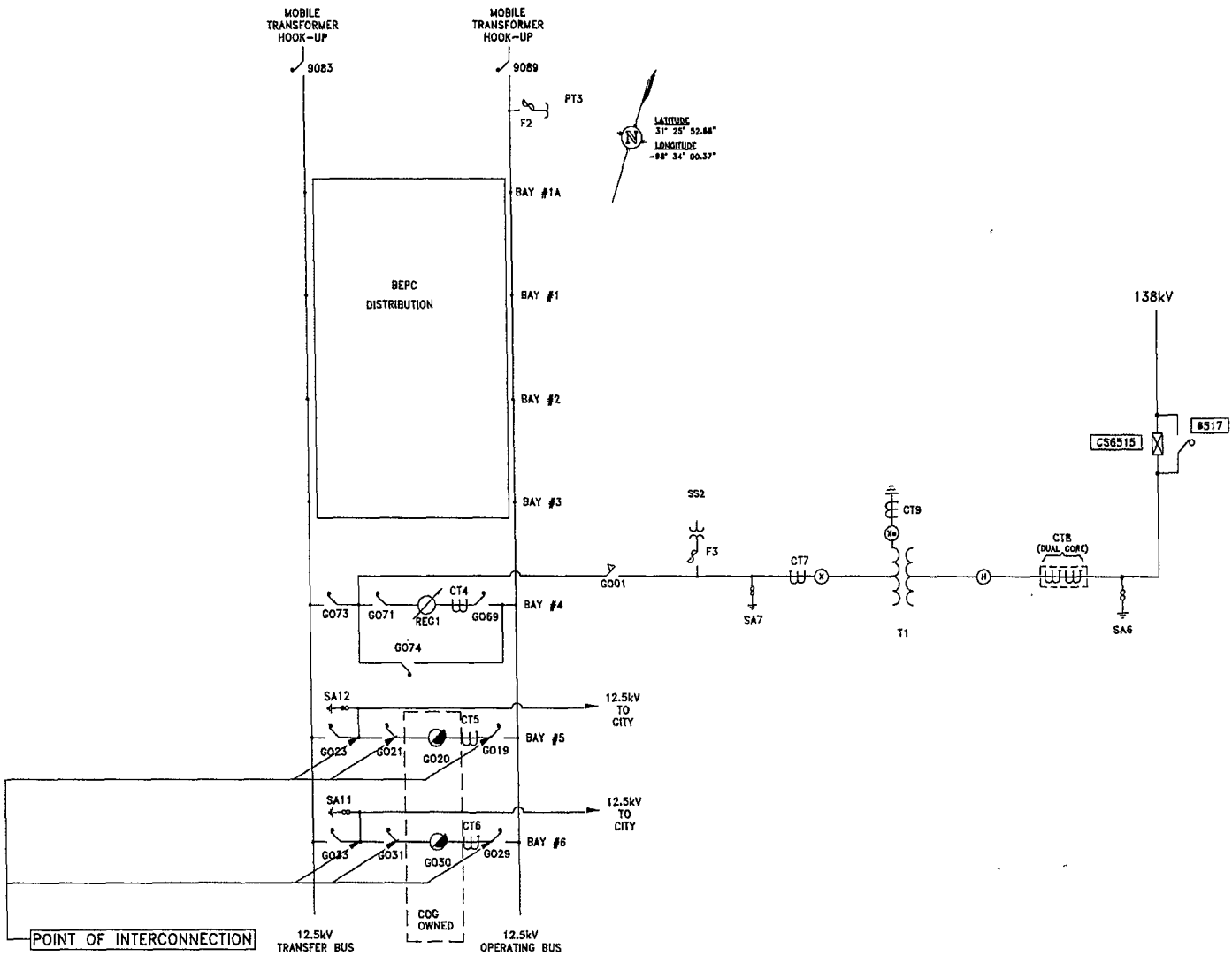
- The City and LCRA TSC are to share access to the substation by LCRA TSC locks in the gate and in the control house doors.
- LCRA TSC will provide the City access to 125 VDC and 120 VAC power. Circuits must have over current protection devices (OCPD) sized according to NEC standards.
- LCRA TSC will provide the City with floor space (as available and as necessary) in its control house for the installation of City required relay panel boards and equipment.

----The remainder of this page has intentionally been left blank----



# GOLDTHWAITE ONE-LINE DIAGRAM

Amendment No. 2



GOLDTHWAITE SUBSTATION  
THIS IS NOT A COMPLETE ONE LINE DRAWING  
FOR A COMPLETE ONE LINE DRAWING SEE DWG NO. S134-E-1-0001-01