



Control Number: 35077



Item Number: 743

Addendum StartPage: 0

**Project No. 35077**

RECEIVED  
2017 JUL -6 PM 4: 08  
PUBLIC UTILITY COMMISSION  
FILING CLERK

**Sixth Amendment**

**INTERCONNECTION AGREEMENT**

**Between**

**LCRA Transmission Services Corporation**

**and**

**Brazos Electric Power Cooperative**

**June 9, 2017**

743 1

**SIXTH AMENDMENT TO  
INTERCONNECTION AGREEMENT**

This Sixth Amendment ("Amendment") is made and entered into this 9<sup>th</sup> day of June, 2017, between Brazos Electric Power Cooperative ("Brazos Electric") and LCRA Transmission Services Corporation ("LCRA TSC"), collectively referred to hereinafter as "the Parties".

**WHEREAS**, LCRA TSC and Brazos Electric entered into that certain Interconnection Agreement executed May 1, 2007, as amended by that certain Amendment No. 1 executed as of June 2, 2009, amended by that certain Amendment No. 2, executed as of September 15, 2009, amended by that certain Amendment No. 3, executed as of May 10, 2010, amended by that certain Amendment No. 4, executed as of September 27, 2012, amended by that certain Amendment No. 5, executed as of November 9, 2015 (collectively, as amended, the "Agreement"),

**WHEREAS**, LCRA TSC installed a 138 kV transformer and made other minor revisions at Evant Substation,

**WHEREAS**, LCRA TSC has added 12.5 kV mobile transformer disconnect switches at Goldthwaite Substation; and

**WHEREAS**, LCRA TSC is removing certain 138 kV assets from the one line drawing and facility schedule which are not relevant to the Points of Interconnection.

**NOW, THEREFORE**, in consideration of the mutual promises and undertakings herein set forth, the Parties agree to amend the Agreement as follows:

1. Exhibit "A" attached to the Agreement is deleted in its entirety and the Exhibit "A" attached to this Sixth Amendment is hereby added to the Agreement in lieu thereof.
2. Facility Schedule No. 2 (including the diagrams attached thereto) is deleted in its entirety and Facility Schedule No. 2 attached to this Sixth Amendment is hereby added to the Agreement in lieu thereof.
3. Facility Schedule No. 2 (including the diagrams attached thereto) attached to this Sixth Amendment will become effective upon execution of this Sixth Amendment by the Parties
4. Facility Schedule No. 3 (including the diagrams attached thereto) is deleted in its entirety and Facility Schedule No. 3 attached to this Sixth Amendment is hereby added to the Agreement in lieu thereof.
5. Facility Schedule No. 3 (including the diagrams attached thereto) attached to this Sixth Amendment will become effective upon execution of this Sixth Amendment by the Parties.

– Remainder of page has intentionally been left blank. –

Except as otherwise expressly provided for herein, the Agreement will continue in full force and effect in accordance with its terms.

IN WITNESS WHEREOF, the Parties have caused this Amendment to be executed in several counterparts, each of which shall be deemed an original but all shall constitute one and the same instrument.

BRAZOS ELECTRIC POWER  
COOPERATIVE

By: \_\_\_\_\_

Name: Clifton Karnei

Title: Executive Vice President and  
General Manager

Date: \_\_\_\_\_

6/9/2017

LCRA TRANSMISSION SERVICES  
CORPORATION

By: \_\_\_\_\_

Name: Sergio Garza, P.E.

Title: LCRA Vice President, Transmission  
Design and Protection

Date: \_\_\_\_\_

May 08, 2017



**EXHIBIT A**  
**Amendment No. 6**

[illegible]

## **FACILITY SCHEDULE NO. 2**

### **Amendment No. 6**

1. **Name: Evant**
2. **Facility Location:** The Evant Substation is located west of US Hwy 281 and approximately 24 miles north of Lampasas, Texas in the LCRA TSC Lampasas — Goldthwaite 138 kV transmission line (T128), near Evant in Lampasas County, Texas.
3. **Points of Interconnection:** There are six (6) Points of Interconnection at Evant Substation are generally described as:
  - where the LCRA TSC 12.5 kV operating bus in bay 6 connects to the Brazos Electric 12.5 kV operating bus in bay 7.
  - where the LCRA TSC 12.5 kV transfer bus in bay 6 connects to the Brazos Electric 12.5 kV transfer bus in bay 7.
  - where the LCRA TSC jumper, from the LCRA TSC 12.5 kV operating bus, connects to Brazos Electric's disconnect switch EV49 in bay 5.
  - where the LCRA TSC jumper, from the LCRA TSC 12.5 kV transfer bus, connects to Brazos Electric's disconnect switch EV53 in bay 5.
  - where the LCRA TSC jumper, from the LCRA TSC 12.5 kV operating bus, connects to Brazos Electric's disconnect switch EV59 in bay 6.
  - where the LCRA TSC jumper, from the LCRA TSC 12.5 kV transfer bus, connects to Brazos Electric's disconnect switch EV63 in bay 6.
4. **Transformation Service provided by LCRA TSC:** Yes, per Transformation Service Agreement between the Parties.
5. **Metering Service provided by LCRA TSC:** Yes, per Wholesale Metering Service Agreement between the Parties.
6. **Delivery Voltage:** 12.5 kV
7. **Metering (voltage, location, loss adjustments, if any, due to location, other):** 12.5 kV, at the Evant Substation which will be located on the load side of the station regulators that feed the 12.5 kV operating bus. The metering equipment provided herein will be in accordance with the applicable requirements of the ERCOT Operating Guides, or its successor in function, and the ERCOT Protocols.
8. **One-Line diagram attached (check one):** Yes
9. **Description of Facilities owned by each Party:**

LCRA TSC owns: The Evant Substation including but not limited to (see attached one-line for details):

  - Substation property, ground grid, gravel, fencing and other appurtenances

- One (1) transrupter TR2405
- One (1) power transformer T1 with associated surge arresters, foundation, jumpers and protective relaying
- 12.5 kV distribution bay 4 including buswork, four 12.5 kV hook stick switches and three single phase voltage regulators REG1.
- Two (2) 12.5 kV hook stick switches and mobile connection in distribution bay 3
- Structures, foundations, operating and transfer bus, for all distribution bays except distribution bay 7.
- Four (4) metering current transformers CT1, CT2, CT3 and CT4
- One (1) single phase neutral current transformer CT6 on transformer T1.
- One (1) 12.5 kV metering potential transformer PT1 and fuse F3
- One (1) meter panel with meters
- Two (2) station service transformers SS1 and SS2 with fuses F2 and F4
- One (1) control / metering house with batteries, battery charger, air conditioner and appurtenances

Brazos Electric owns: (see attached one-line for details)

- Two (2) 12.5 kV breakers, breaker foundations, breaker jumpers, six feeder bay switches, two surge arrestors and feeder buswork in bays 5 and 6.
- 12.5 kV distribution bay 7 including structures, foundations, operating and transfer bus, breaker, switches, and surge arrestor.

**10. Operational Responsibilities of Each Party:**

- Each Party will be responsible for the operation of the facilities it owns.
- No change will be made in the normal operation of the Points of Interconnection without the mutual agreement of the Parties.

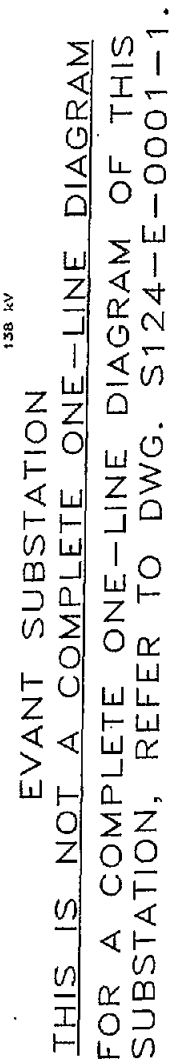
**11. Maintenance Responsibilities of Each Party:**

- Each Party will be responsible for the maintenance of the facilities it owns.
- Maintenance of any facilities by either Party that will cause a deviation from normal power and energy flow at the Points of Interconnection will be scheduled at a mutually agreeable time.

**12. Other Terms and Conditions:**

- Each Party will be responsible for costs associated with the facilities they own.
- Brazos Electric shall have access into the substation for the purpose of operating and maintaining Brazos Electric facilities in accordance with this facility schedule.
- The substation control house and the gate to the substation will be double-locked with hardened steel locks of both Parties.
- LCRA TSC will provide Brazos Electric access to 125 VDC and 120 VAC power. Circuits must have over current protection devices (OCPD) sized according to NEC standards.
- LCRA TSC will provide Brazos Electric with floor space (as available and as necessary) in its control house for the installation of Brazos Electric required relay panel boards and equipment.

## Amendment No. 6





### **FACILITY SCHEDULE NO. 3**

Amendment No. 6

- 1. Name: Goldthwaite**
- 2. Facility Location:** The Goldthwaite Substation is located at 131 US Highway 183 South, Goldthwaite, Mills County, Texas 76844.
- 3. Points of Interconnection:** There are nine (9) Points of Interconnection at Goldthwaite Substation generally described as:
  - where the LCRA TSC 12.5 kV operating bus in Bay 1 connects to the Brazos Electric 12.5 kV operating bus in Bay 2.
  - where the LCRA TSC 12.5 kV transfer bus in Bay 1 connects to the Brazos Electric 12.5 kV transfer bus in Bay 2.
  - where the Brazos Electric 12.5 kV operating bus in Bay 3 connects to the LCRA TSC 12.5 kV operating bus in Bay 4.
  - where the Brazos Electric 12.5 kV transfer bus in Bay 3 connects to the LCRA TSC 12.5 kV transfer bus in Bay 4.
  - where the LCRA TSC jumper from the LCRA TSC 12.5 kV operating bus connects to the four hole pad on Brazos Electric's disconnect switch GO9.
  - where the LCRA TSC jumper from the LCRA TSC 12.5 kV transfer bus connects to the four hole pad on Brazos Electric's disconnect switch GO13.
  - where the incoming distribution line connects to the tubular bus between switches GO61 and GO63 at breaker GO60.
  - where the jumper from breaker GO60, passing through CT11, connects to the 4 hole pad on switch GO59.
  - where the jumper from breaker GO60 connects to the 4 hole pad on switch GO61.
- 4. Transformation Service provided by LCRA TSC:** Yes, per Transformation Service Agreement between the Parties.
- 5. Metering Service provided by LCRA TSC:** Yes, per Wholesale Metering Services Agreement between the Parties.
- 6. Delivery voltage:** 12.5 kV
- 7. Metering (voltage, location, loss adjustments, if any, due to location, other):** 12.5 kV, at the distribution bus on the load side of the distribution voltage regulators. The metering equipment provided herein will be in accordance with the applicable requirements of the ERCOT Operating Guides, or its successor in function, and the ERCOT Protocols.
- 8. One-line Diagram attached (check one):** Yes
- 9. Description of Facilities owned by Each Party:**

LCRA TSC owns: (see attached one-line for details)

The Goldthwaite Substation including, but not limited to, the following items:

- Substation property, ground grid, gravel, fencing and other appurtenances
- One (1) transformer T1 with associated surge arresters, foundation, jumpers and protective relaying
- One (1) circuit switcher CS6515 with bypass switch 6517, foundation, jumpers and protective relaying
- Two (2) relaying current transformers CT7 and CT8
- One (1) single phase current transformer CT9
- Five (5) 12.5-kV metering current transformers CT1, CT2, CT3, CT4 and CT11
- One (1) 12.5 kV metering potential transformer, PT3 and fuse F2
- One (1) station service transformer SS2 with fuse F3
- One (1) control / metering house with batteries, battery charger, air conditioner and appurtenances
- One (1) metering panel with meters
- One (1) 12.5 kV total bay 4 including buswork, 12.5 kV hook stick switches and three single phase voltage regulators REG1
- One (1) 12.5 kV transformer bus switch G001
- Structures, structure foundations, operating and transfer buses for all distribution bays except bays 2 and 3.
- Feeder bay switches and feeder bay buswork in distribution bay 1A
- Two (2) 12.5 kV mobile transformer hook-up points with switches 9083 and 9089

Brazos Electric owns: (see attached one-line for details)

- 12.5 kV distribution bays 2 and 3 including structures, structure foundations, operating and transfer buses, breakers, breaker foundations, feeder bay switches, surge arrestors and feeder bay buswork
- Breaker, breaker foundation, breaker jumpers, feeder bay switches, surge arrestor and feeder bay buswork in distribution bay 1
- Breaker, breaker foundation, surge arrestor and breaker jumpers in distribution bay 1A

#### **10. Operational Responsibilities of Each Party:**

- Each Party will be responsible for the operation of the facilities it owns.
- No change will be made in the normal operation of the Points of Interconnection without the mutual agreement of the Parties.

#### **11. Maintenance Responsibilities of Each Party:**

- Each Party will be responsible for the maintenance of the facilities it owns.
- Maintenance of any facilities by either Party that will cause a deviation from normal power and energy flow at the Points of Interconnection will be scheduled at a mutually agreeable time.

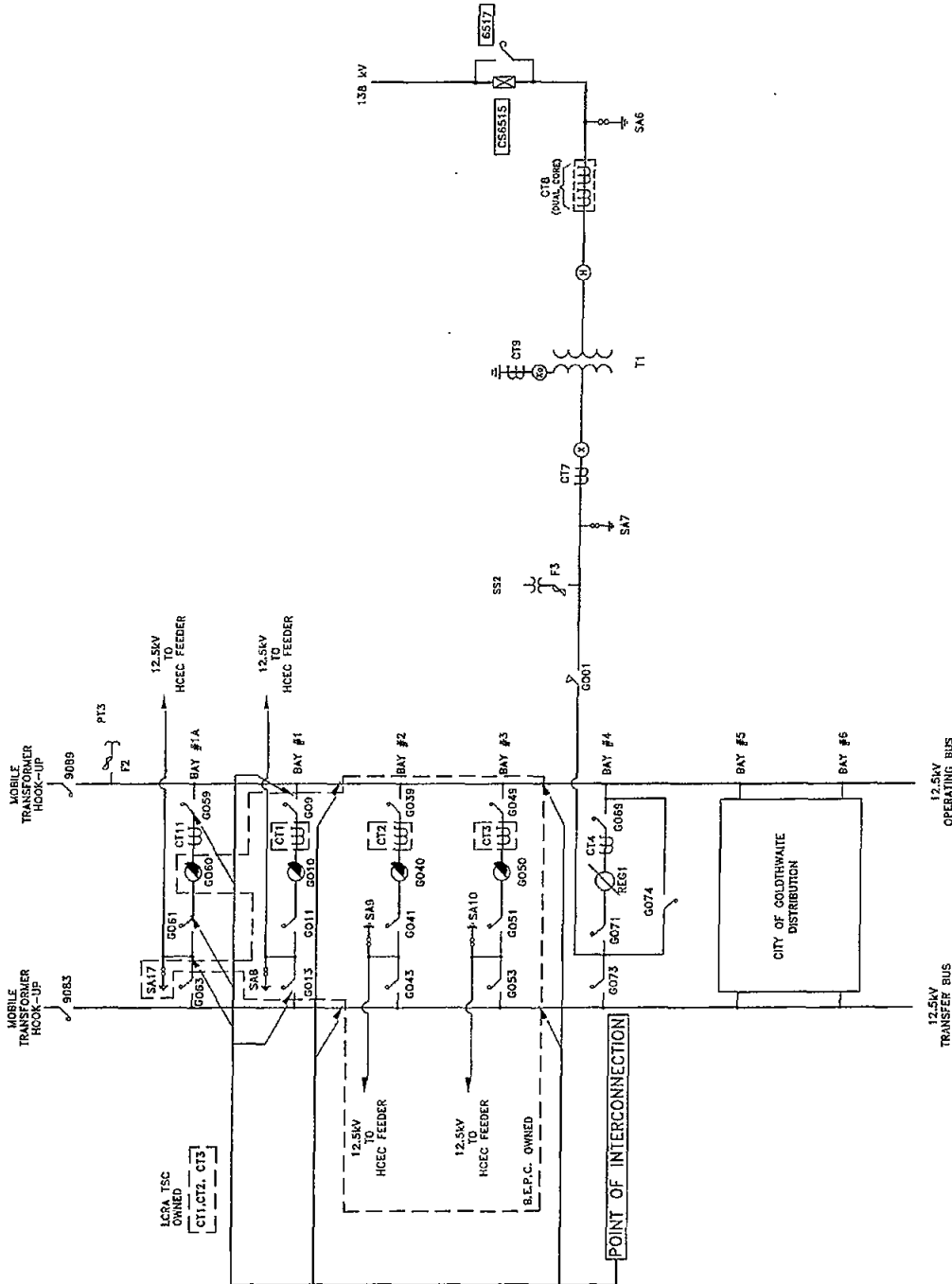
#### **12. Other Terms and Conditions:**

- Each Party will be responsible for costs associated with the facilities they own.

- Brazos Electric shall have access into the substation for the purpose of operating and maintaining Brazos Electric facilities in accordance with this facility schedule.
- The substation control house and the gate to the substation will be double-locked with hardened steel locks of both Parties.
- LCRA TSC will provide Brazos Electric access to 125 VDC and 120 VAC power. Circuits must have over current protection devices (OCPD) sized according to NEC standards
- LCRA TSC will provide Brazos Electric with floor space (as available and as necessary) in its control house for the installation of Brazos Electric required panels and equipment.

-----The remainder of this page has intentionally been left blank-----

**GOLDTHWAITE ONE LINE DIAGRAM**  
Amendment No. 6



GOLDTHWAITE SUBSTATION

THIS IS NOT A COMPLETE ONE LINE DRAWING

FOR A COMPLETE ONE LINE DRAWING SEE DWG NO. S134-E-1-0001