



Control Number: 35077



Item Number: 739

Addendum StartPage: 0

**Project No. 35077**

FILED  
2017 JUN 29 PM 4:12  
PUBLIC UTILITY COMMISSION  
FILING CLERK

**Fifth Amendment**

**INTERCONNECTION AGREEMENT**

**Between**

**LCRA Transmission Services Corporation**

**and**

**City of Lampasas**

**May 31, 2017**

**FIFTH AMENDMENT TO  
INTERCONNECTION AGREEMENT**

This Fifth Amendment ("Amendment") is made and entered into this 31 day of May, 2017, between the City of Lampasas ("City") and LCRA Transmission Services Corporation ("LCRA TSC") collectively referred to hereinafter as the Parties.

**WHEREAS**, LCRA TSC and the City entered into that certain Interconnect Agreement executed June 16, 2008, as amended by that certain Amendment No. 1, executed as of September 30, 2008, as amended by that certain Amendment No. 2, executed as of November 19, 2009, as amended by that certain Amendment No. 3, executed as of December 3, 2010, as amended by that certain Amendment No. 4, executed as of September 25, 2014 (collectively, as amended, the "Agreement"),

**WHEREAS**, LCRA TSC added station service SS4, removed 138 kV switches 3344 and 3724, installed buswork and insulators and reconfigured the location of the circuit switchers at Lampasas Substation; and

**WHEREAS**, LCRA TSC is removing certain 138 kV assets from the one line drawing and facility schedule which are not relevant to the Points of Interconnection.

**NOW, THEREFORE**, in consideration of the mutual promises and undertakings herein set forth, the Parties agree to amend the Agreement as follows:

1. Exhibit "A" is deleted in its entirety and the Exhibit "A" attached to this Fifth Amendment is hereby added to the Agreement in lieu thereof.
2. Facility Schedule No. 1 (including the diagrams attached thereto) is deleted in its entirety and Facility Schedule No. 1 attached to this Fifth Amendment is hereby added to the Agreement in lieu thereof.
3. Facility Schedule No. 1 (including the diagrams attached thereto) attached to this Fifth Amendment will become effective upon execution of this Fifth Amendment by the Parties.

Except as otherwise expressly provided for herein, the Agreement will continue in full force and effect in accordance with its terms.

----The remainder of this page has intentionally been left blank----

IN WITNESS WHEREOF, the Parties have caused this Fifth Amendment to be executed in several counterparts, each of which shall be deemed an original but all shall constitute one and the same instrument.

CITY OF LAMPASAS

By: Misti Talbert

Name: ~~Jerry Grayson~~ Misti Talbert

Title: Mayor

Date: 5/31/17

LCRA TRANSMISSION SERVICES CORPORATION

By: [Signature]

Name: Sergio Garza, P.E.

Title: LCRA Vice President, Transmission Design and Protection

Date: May 09, 2017



**EXHIBIT A**  
Fifth Amendment

[illegible]

## **FACILITY SCHEDULE NO. 1**

### **Amendment No. 5**

1. **Name:** Lampasas Substation
2. **Facility Location:** The Lampasas Substation is located at 494 CR 3400, Lampasas, Lampasas County, Texas 76550.
3. **Points of Interconnection:** There are twelve (12) Points of Interconnection the Lampasas Substation generally described as:
  - where the incoming distribution line connects to the tubular bus between switches LP11 and LP13 at breaker LP10.
  - where the jumper from breaker LP10 connects to the 4 hole pad on switch LP9.
  - where the jumper from breaker LP10 connects to the 4 hole pad on switch LP11.
  - where the incoming distribution line connects to the tubular bus between switches LP21 and LP23 at breaker LP20.
  - where the jumper from breaker LP20 connects to the 4 hole pad on switch LP19.
  - where the jumper from breaker LP20 connects to the 4 hole pad on switch LP21.
  - where the incoming distribution line connects to the tubular bus between switches LP61 and LP63 at breaker LP60.
  - where the jumper from breaker LP60 connects to the 4 hole pad on switch LP59.
  - where the jumper from breaker LP60 connects to the 4 hole pad on switch LP61.
  - where the incoming distribution line connects to the tubular bus between switches LP81 and LP83 at breaker LP80.
  - where the jumper from breaker LP80 connects to the 4 hole pad on switch LP79.
  - where the jumper from breaker LP80 connects to the 4 hole pad on switch LP81.
4. **Transformation Services Provided by LCRA TSC:** Yes, per Transformation Service Agreement between the Parties.
5. **Metering Services Provided by LCRA TSC:** Yes, per Wholesale Metering Services Agreement between the Parties.
6. **Delivery Voltage:** 12.5 kV
7. **Metered Voltage and Location:** The metered voltage is 12.5 kV. The metering current transformers are located in total bay #3 and internal to transformer T3. The metering potential transformers are located on each 12.5 kV operating bus.
8. **One Line Diagram Attached:** Yes

**9. Description of Facilities Owned by Each Party:**

City of Lampasas owns:

- Four (4) distribution circuits including dead-end insulators that attach to the dead-end structure, conductor, and hardware
- Four (4) distribution circuit breakers LP10, LP20, LP60, and LP80 and associated foundations, jumpers, relaying and cabling

LCRA TSC owns:

The Lampasas Substation including, but not limited to, the following items:

- Two (2) circuit switchers CS3345 and CS3715 with bypass switches 3347 and 3717, foundations, jumpers and protective relaying
- Two (2) power transformers T3 and T2 with associated surge arresters, foundation, jumpers and protective relaying
- Two (2) 12.5 kV load break switches LP35 and LP95
- One (1) single phase current transformer CT8
- Ten (10) distribution, mobile tie bus and total bays including A-frames, trusses, insulators, disconnect switches, surge arresters, 12.5 kV operating and transfer bus, bus potential transformers, and metering current transformers
- One (1) underfrequency relaying panel
- Two (2) station Service SS3 and SS4 with fuses F3 and F4
- One (1) control house (24' x 36') with 24Vdc batteries, 24 Vdc battery charger, 48 Vdc battery, 48 Vdc battery charger, 125 Vdc battery charger and appurtenances
- One (1) portable control (battery) house (12' x 21') with 125 Vdc batteries
- Substation property ground grid, gravel, fencing and other appurtenances

**10. Operational Responsibilities of Each Party:** Each Party will be responsible for the operation of the equipment it owns.

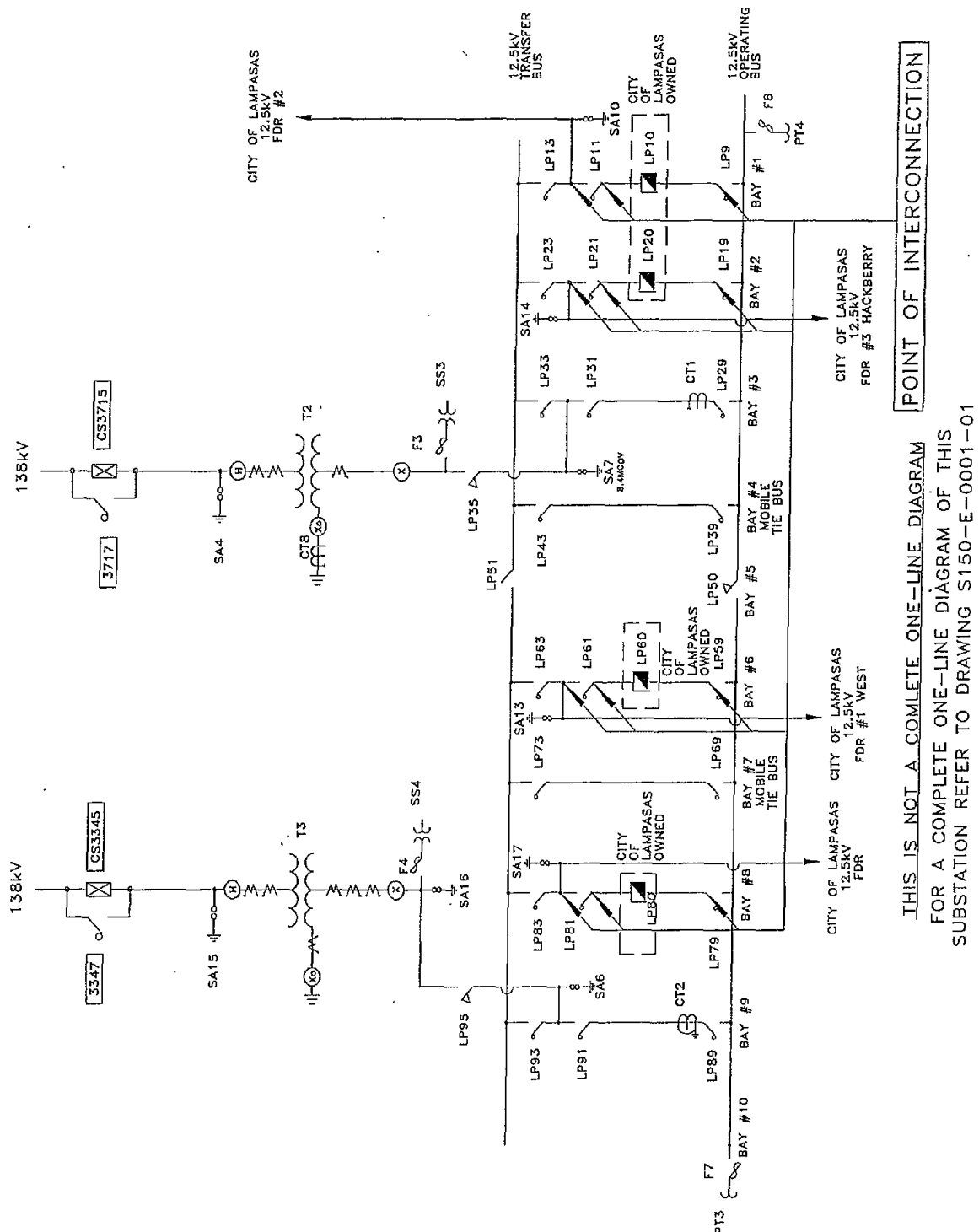
**11. Maintenance Responsibilities of Each Party:** Each Party will be fully responsible for the maintenance of the equipment it owns.

**12. Other Terms and Conditions:**

- The City and LCRA TSC are to share access to the substation by LCRA TSC locks in the gate and in the control house doors.
- LCRA TSC will provide City access to 125 VDC and 120 VAC power. Circuits must have over current protection devices (OCPD) sized according to NEC standards.
- LCRA TSC will provide City with floor space (as available and as necessary) in its control house for the installation of City required panels and equipment.

----The remainder of this page has intentionally been left blank----

## Amendment No. 5



LCRA TSC – City of Lampasas-Fifth Amendment

Page 6 of 6