



Control Number: 35077



Item Number: 738

Addendum StartPage: 0

**Project No. 35077**

RECEIVED  
2017 JUN 13 PM 1:11  
PUBLIC UTILITY COMMISSION  
FILING CLERK

**Third Amendment**

**INTERCONNECTION AGREEMENT**

**Between**

**LCRA Transmission Services Corporation**

**and**

**City of Hempstead**

**May 26, 2017**

738<sub>1</sub>

**THIRD AMENDMENT TO  
INTERCONNECTION AGREEMENT**

This Third Amendment ("Amendment") is made and entered into this 26th day of May, 2017, between the City of Hempstead ("City") and LCRA Transmission Services Corporation ("LCRA TSC") collectively referred to hereinafter as the Parties.

**WHEREAS**, LCRA TSC and the City entered into that certain Interconnection Agreement executed June 4, 2008, as amended by that certain Amendment No. 1, executed as of November 17, 2008 as amended by that certain Amendment No. 2, executed as of March 29, 2012 (collectively, as amended, the "Agreement"),

**WHEREAS**, LCRA TSC will remove switch 6861 and install buswork and 138 kV insulators at Waller Substation; and

**WHEREAS**, LCRA TSC is removing certain 138 kV assets from the one line drawing and facility schedule which are not relevant to the Points of Interconnection.

**NOW, THEREFORE**, in consideration of the mutual promises and undertakings herein set forth, the Parties agree to amend the Agreement as follows:

1. Exhibit "A" attached to the Agreement is deleted in its entirety and the Exhibit "A" attached to this Third Amendment is hereby added to the Agreement in lieu thereof.
2. Facility Schedule No. 1 (including the diagrams attached thereto) is deleted in its entirety and Facility Schedule No. 1 attached to this Third Amendment is hereby added to the Agreement in lieu thereof.
3. Facility Schedule No. 1 (including the diagrams attached thereto) attached to this Third Amendment will become effective upon execution of this Third Amendment by the Parties.

Except as otherwise expressly provided for herein, the Agreement will continue in full force and effect in accordance with its terms.

----The remainder of this page has intentionally been left blank----

IN WITNESS WHEREOF, the Parties have caused this Third Amendment to be executed in several counterparts, each of which shall be deemed an original but all shall constitute one and the same instrument.

CITY OF HEMPSTEAD

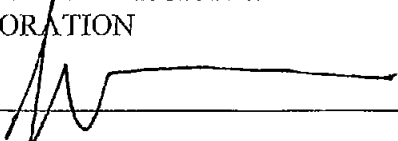
By: 

Name: Michael S. Wolfe Sr.

Title: Mayor

Date: May 26, 2017

LCRA TRANSMISSION SERVICES  
CORPORATION

By: 

Name: Sergio Garza, P.E.

Title: LCRA Vice President, Transmission  
Design and Protection

Date: May 08, 2017



### Amendment No. 3

[illegible]

**FACILITY SCHEDULE NO. 1**  
**Amendment No. 3**

1. **Name:** Waller Substation
2. **Facility Location:** The Waller Substation is located at 2980 13<sup>th</sup> Street, Hempstead, Waller County, Texas 77445.
3. **Points of Interconnection:** There are nine (9) Points of Interconnection in the Waller Substation generally described as:
  - where the incoming distribution line connects to the jumper, at the dead end insulator, in distribution bay #3.
  - where the incoming distribution line connects to the jumper, at the dead end insulator, in distribution bay #4.
  - where the incoming distribution line connects to the tubular bus between switches WR91 and WR93 at breaker WR90.
  - where the jumper from breaker WR70 bolts to the four hole pad on switch WR69.
  - where the jumper from breaker WR70 bolts to the four hole pad on switch WR71.
  - where the jumper from breaker WR80 bolts to the four hole pad on switch WR79.
  - where the jumper from breaker WR80 bolts to the four hole pad on switch WR81.
  - where the jumper from breaker WR90 bolts to the four hole pad on switch WR89.
  - where the jumper from breaker WR90 bolts to the four hole pad on switch WR91.
4. **Transformation Services Provided by LCRA TSC:** Yes, per Transformation Service Agreement between the Parties.
5. **Metering Services Provided by LCRA TSC:** Yes, per Wholesale Metering Services Agreement between the Parties.
6. **Delivery Voltage:** 12.5 kV
7. **Metered Voltage and Location:** The metered voltage is 12.5 kV. The metering current transformer is located inside T2 and in distribution bay #10. The metering potential transformer is located on the 12.5 kV operating bus.
8. **One Line Diagram Attached:** Yes
9. **Description of Facilities Owned by Each Party:**

City of Hempstead owns:

  - Three (3) distribution circuits including dead-end insulators that attach to the dead-end structure, conductor, and hardware
  - Three (3) distribution circuit breakers WR70 WR80 and WR90 and associated foundations, jumpers, relaying panels and cabling

LCRA TSC owns:

The Waller Substation including, but not limited to, the following items:

- One (1) power transformer T2 with associated surge arresters, foundation, jumpers and protective relaying
- One (1) circuit switcher CS6865 with bypass switch 6867, foundations and protective relaying
- Ten (10) distribution, bus tie and total bays including A-frames, trusses, insulators, disconnect switches, surge arresters, 12.5 kV operating and transfer buses and bus potential transformers
- One (1) total circuit breaker WR60 with foundations, jumpers and protective relaying
- One (1) metering current transformer CT10
- Conductor between distribution bay #7 and distribution bay #3
- Conductor between distribution bay #8 and distribution bay #4
- One (1) underfrequency relay panel
- One (1) metering panel with meters
- One (1) station service SS2 with fuse f3
- One (1) control house (24' x 34') with batteries, battery charger and appurtenances
- Substation property, ground grid, gravel, fencing and other appurtenances

**10. Operational Responsibilities of Each Party:**

- Each Party will be fully responsible for the operation of the equipment it owns.

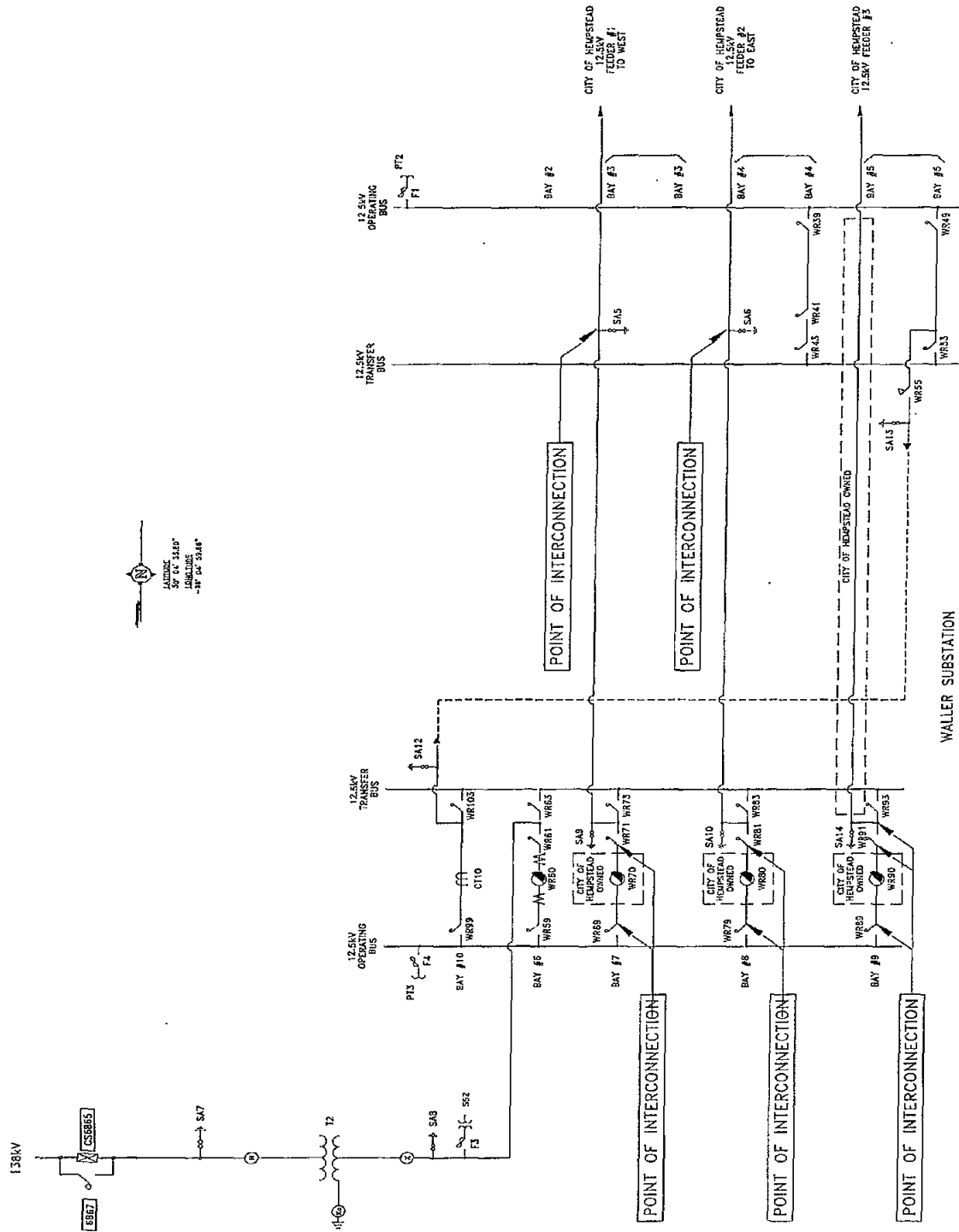
**11. Maintenance Responsibilities of Each Party:** Each Party will be fully responsible for the maintenance of the equipment it owns.

**12. Other Terms and Conditions:**

- The City and LCRA TSC are to share access to the substation by LCRA TSC locks in the gate and in the control house doors.
- LCRA TSC will provide the City access to 125 VDC and 120 VAC power. Circuits must have over current protection devices (OCPD) sized according to NEC standards.
- LCRA TSC will provide the City with floor space (as available and as necessary) in its control house for the installation of City required relay panel boards and equipment.

# WALLER ONE-LINE DIAGRAM

## Amendment No. 3



THIS IS NOT A COMPLETE ONE-LINE DIAGRAM  
FOR A COMPLETE ONE-LINE DIAGRAM OF THIS  
SUBSTATION, REFER TO DRAWING S230-E-0001-1.