

Control Number: 35077



Item Number: 730

Addendum StartPage: 0

**PUC Project No. 35077**

RECEIVED

2017 JUN 16 PM 4:19

PUBLIC UTILITY COMMISSION  
FILING CLERK

**Second Amendment to**

**INTERCONNECTION AGREEMENT**

**Between**

**City of Boerne**

**and**

**LCRA Transmission Services Corporation**

**Dated**

**May 18, 2017**

730

**SECOND AMENDMENT TO  
INTERCONNECTION AGREEMENT**

This Second Amendment ("Amendment") is made and entered into this 18<sup>th</sup> day of MAY, 2017, between the City of Boerne ("City") and LCRA Transmission Services Corporation ("LCRA TSC") collectively referred to hereinafter as the Parties.

**WHEREAS**, LCRA TSC and the City entered into that certain Interconnect Agreement executed February 5, 2009, as amended by that certain Amendment No. 1 executed as of August 26, 2011 collectively, as amended, (the "**Agreement**"),

**WHEREAS**, LCRA TSC will install a 138 kV, 2000A V switch to replace switch 5416, install buswork, and remove switch 5414 at Boerne Substation; and

**WHEREAS**, LCRA TSC is removing certain 138 kV assets from the one line drawing and facility schedule which are not relevant to the Points of Interconnection.

**NOW, THEREFORE**, in consideration of the mutual promises and undertakings herein set forth, the Parties agree to amend the Agreement as follows:

1. Exhibit "A" is deleted in its entirety and the Exhibit "A" attached to this Second Amendment is hereby added to the Agreement in lieu thereof.
2. Facility Schedule No. 1 (including the diagrams attached thereto) is deleted in its entirety and Facility Schedule No. 1 attached to this Second Amendment is hereby added to the Agreement in lieu thereof.
3. Facility Schedule No. 1 (including the diagrams attached thereto) attached to this Second Amendment will become effective upon execution of this Second Amendment by the Parties.

Except as otherwise expressly provided for herein, the Agreement will continue in full force and effect in accordance with its terms.

---The remainder of this page has intentionally been left blank---

IN WITNESS WHEREOF, the Parties have caused this Second Amendment to be executed in several counterparts, each of which shall be deemed an original but all shall constitute one and the same instrument.

CITY OF BOERNE

LCRA TRANSMISSION SERVICES CORPORATION

By: Ronald Bowman

By: Sergio Garza

Name: Ronald Bowman

Name: Sergio Garza, P.E.

Title: City Manager

Title: LCRA Vice President, Transmission Design and Protection

Date: May 18, 2017

Date: May 08, 2017





## FACILITY SCHEDULE NO. 1

### Amendment No. 2

1. **Name:** Boerne Substation
2. **Facility Location:** The Boerne Substation is located at 751 Adler St, Boerne, Kendall County, Texas 78006.
3. **Points of Interconnection:** There are twelve (12) Points of Interconnection in the Boerne Substation generally described as:
  - where the incoming distribution line connects to the tubular bus between switches BO21 and B023 at breaker BO20.
  - where the jumper from breaker BO20 , passing through CT14, connects to the 4 hole pad on switch BO19.
  - where the jumper from breaker BO20 connects to the 4 hole pad on switch BO21.
  - where the incoming distribution line connects to the tubular bus between switches BO31 and B033 at breaker BO30.
  - where the jumper from breaker BO30 , passing through CT12, connects to the 4 hole pad on switch BO29.
  - where the jumper from breaker BO30 connects to the 4 hole pad on switch BO31.
  - where the incoming distribution line connects to the tubular bus between switches BO11 and BO13 at breaker BO10.
  - where the jumper from breaker BO10, passing through CT13, connects to the 4 hole pad on switch BO9.
  - where the jumper from breaker BO10 connects to the 4 hole pad on switch BO11.
  - where the incoming distribution line connects to the tubular bus between switches BO41 and BO43 at breaker BO40.
  - where the jumper from breaker BO40, passing through CT3, connects to the 4 hole pad on switch BO39.
  - where the jumper from breaker BO40 connects to the 4 hole pad on switch BO41.
4. **Transformation Services Provided by LCRA TSC:** Yes, per Transformation Service Agreement between the Parties.
5. **Metering Services Provided by LCRA TSC:** Yes, per Wholesale Metering Services Agreement between the Parties.
6. **Delivery Voltage:** 12.5 kV
7. **Metered Voltage and Location:** The metered voltage is 12.5 kV. The metering current transformers are located in each distribution bay and in T1. The metering potential transformer is located on the 12.5 kV operating bus.
8. **One Line Diagram Attached:** Yes

**9. Description of Facilities Owned by Each Party:**

City of Boerne owns:

- Four (4) distribution circuit breakers with jumpers BO10, BO20, BO30, and BO40
- Four (4) distribution circuit breaker foundations for BO10, BO20, BO30, and BO40
- Two (2) distribution circuit breaker panels in control house

LCRA TSC owns:

The Boerne Substation including, but not limited to, the following items:

- One (1) power transformer T1 with associated surge arresters, foundation, jumpers and protective relaying
- One (1) circuit switcher CS5415 with bypass switch 5417 foundation, jumpers and protective relaying
- All distribution and total bays including A-frames, trusses, insulators, disconnect switches and surge arresters, 12.5 kV operating and transfer bus, bus potential transformers, and metering current transformers
- Two (2) 12.5 kV disconnect switches and mobile transformer connections on 12.5 kV operating and transfer buses
- One (1) total circuit breaker BO100 with foundation, jumpers and protective relaying
- One (1) under frequency relay panel
- One (1) meter panel with meters
- One (1) station service SS1
- One (1) control house (18' x 42')
- One (1) portable battery house (12' x 21') with battery and battery charger
- One (1) patrolman's house (12' x 21')
- Substation property, ground grid, gravel, fencing and appurtenances

**10. Operational Responsibilities of Each Party:**

- Each Party will be responsible for the operation of the equipment it owns.

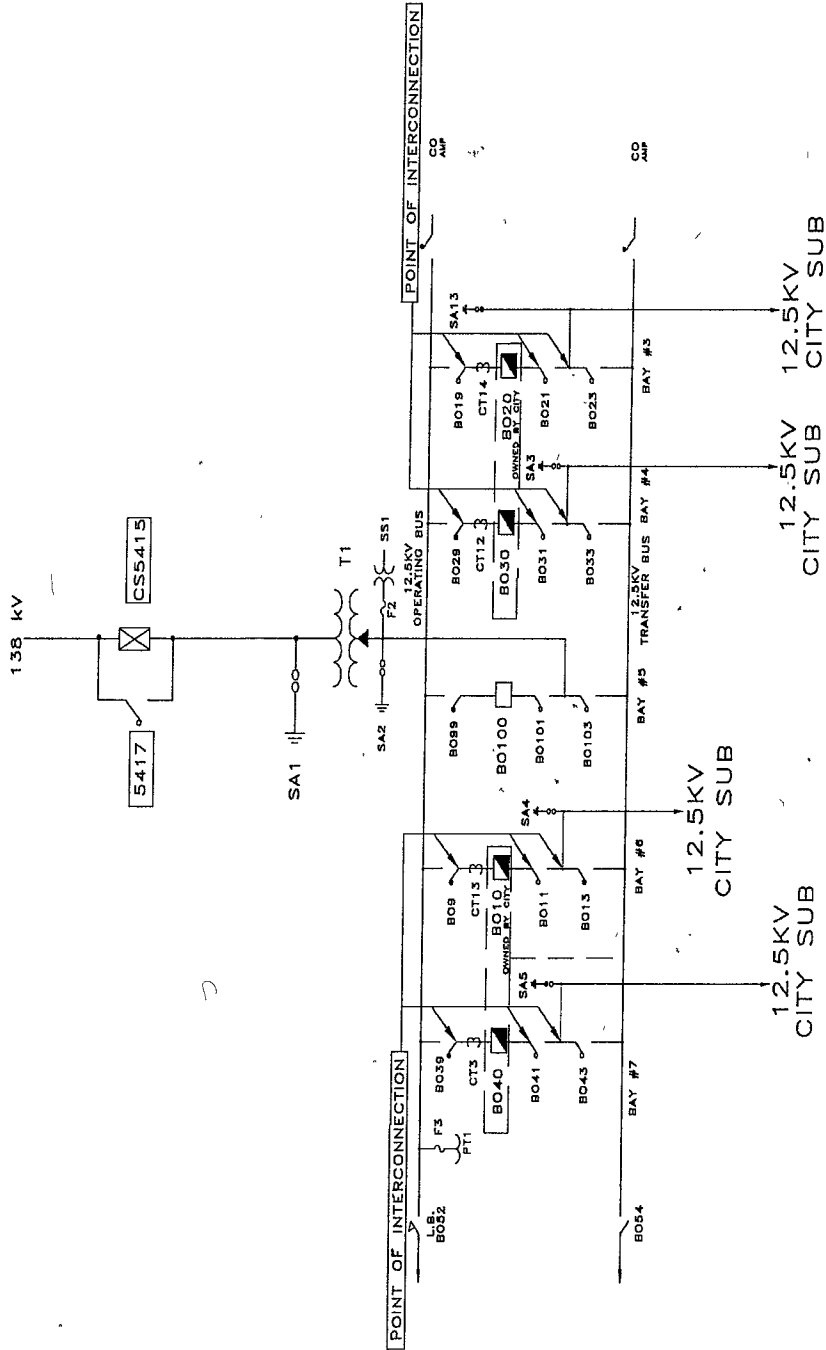
**11. Maintenance Responsibilities of Each Party:** Each Party will be fully responsible for the maintenance of the equipment it owns.

**12. Other Terms and Conditions:**

- City and LCRA TSC are to share access to the substation by hardened LCRA TSC locks in the gate and in the control house doors.
- LCRA TSC will provide City access to 125 VDC and 120 VAC power. Circuits must have over current protection devices (OCPD) sized according to NEC standards.
- LCRA TSC will provide City with floor space (as available and as necessary) in its control house for the installation of City required panels and equipment.

# BOERNE ONE-LINE DIAGRAM

Amendment No. 2



BOERNE SUBSTATION  
THIS IS NOT A COMPLETE ONE-LINE DIAGRAM

FOR A COMPLETE ONE-LINE DIAGRAM OF THIS  
SUBSTATION, REFER TO DWG. S106-E-0001-1.