

Control Number: 35077



Item Number: 708

Addendum StartPage: 0

Project No. 35077
Amendment No. 2

RECEIVED
2017 FEB 27 PM 4:11
PUBLIC UTILITY COMMISSION
FILING CLERK

INTERCONNECTION AGREEMENT
Between
LCRA Transmission Services Corporation
and
City of Burnet

January 30, 2017

**SECOND AMENDMENT TO
INTERCONNECTION AGREEMENT**

This Second Amendment ("Amendment") is made and entered into this ³⁰~~10~~th day of January, 2017, between the City of Burnet ("City") and LCRA Transmission Services Corporation ("LCRA TSC") collectively referred to hereinafter as the Parties.

WHEREAS, the LCRA TSC and the City entered into that certain Interconnection Agreement executed September 30, 2008, as amended by that certain Amendment No. 1 executed as of March 29, 2011 (collectively, as amended, the "Agreement"), and;

WHEREAS, LCRA TSC will replace 1 Vee switch and remove one switch at Burnet Substation as part of the Power Transformer Bypass Capability project.

NOW, THEREFORE, in consideration of the mutual promises and undertakings herein set forth, the Parties agree to amend the Agreement as follows:

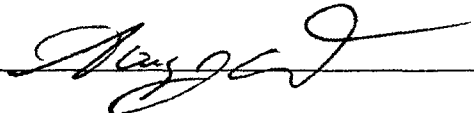
1. Exhibit "A" attached to the Agreement is deleted in its entirety and the Exhibit "A" attached to this Second Amendment is hereby added to the Agreement in lieu thereof.
2. Facility Schedule No. 1 (including the diagrams attached thereto) is deleted in its entirety and Facility Schedule No. 1 attached to this Second Amendment is hereby added to the Agreement in lieu thereof.
3. Facility Schedule No. 1 (including the diagrams attached thereto) attached to this Second Amendment will become effective upon execution of this Second Amendment by the Parties.

Except as otherwise expressly provided for herein, the Agreement will continue in full force and effect in accordance with its terms.

---- The remainder of this page has intentionally been left blank ----

IN WITNESS WHEREOF, the Parties have caused this Second Amendment to be executed in several counterparts, each of which shall be deemed an original but all shall constitute one and the same instrument.

CITY OF BURNET

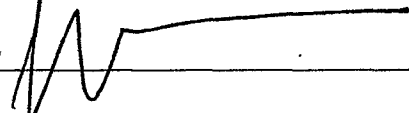
By: 

Name: Gary Wideman

Title: Mayor

Date: 1-10-17

LCRA TRANSMISSION SERVICES CORPORATION

By: 

Name: Sergio Garza, P.E.

Title: LCRA Vice President, Transmission Design and Protection

Date: JANUARY 30, 2017



FACILITY SCHEDULE NO. 1
Amendment #2

1. **Name:** Burnet Substation
2. **Facility Location:** The Burnet Substation is located at 711 Hamilton Creek Dr., Burnet, Burnet County, Texas 78611.
3. **Points of Interconnection:** There are twelve (12) Points of Interconnection in the Burnet Substation generally described as:
 - where the incoming distribution line connects to the tubular bus between switches BU201 and BU203 at breaker BU200.
 - where the jumper from breaker BU200 connects to the 4 hole pad on switch BU199.
 - where the jumper from breaker BU200 connects to the 4 hole pad on switch BU201.
 - where the incoming distribution line connects to the tubular bus between switches BU301 and BU303 at breaker BU300.
 - where the jumper from breaker BU300 connects to the 4 hole pad on switch BU299.
 - where the jumper from breaker BU300 connects to the 4 hole pad on switch BU301.
 - where the incoming distribution line connects to the tubular bus between switches BU401 and BU403 at breaker BU400.
 - where the jumper from breaker BU400 connects to the 4 hole pad on switch BU399.
 - where the jumper from breaker BU400 connects to the 4 hole pad on switch BU401.
 - where the incoming distribution line connects to the tubular bus between switches BU501 and BU503 at breaker BU 500.
 - where the jumper from breaker BU500 connects to the 4 hole pad on switch BU499.
 - where the jumper from breaker BU500 connects to the 4 hole pad on switch BU501.
4. **Transformation Services Provided by LCRA TSC:** Yes, per Transformation Service Agreement between the Parties
5. **Metering Services Provided by LCRA TSC:** Yes, per Wholesale Metering Services Agreement between the Parties
6. **Delivery Voltage:** 12.5 kV
7. **Metered Voltage and Location:** The metered voltage is 12.5 kV. The metering current transformers are located inside T2 and the 12.5 kV operating bus. The metering potential

transformer is located on the 12.5 kV operating bus.

8. One Line Diagram Attached: Yes

9. Description of Facilities Owned by Each Party:

City of Burnet owns:

- Four (4) distribution circuits including dead-end insulators that attach to the dead-end structure, conductor, and hardware
- Four (4) distribution circuit breakers BU200, BU300, BU400, and BU500 including foundations, jumpers and protection packages

LCRA TSC owns:

The Burnet Substation including, but not limited to, the following items:

- One (1) power transformer T2 with associated surge arresters, foundation, jumpers and protective relaying
- One (1) 138 kV circuit switcher CS3015 with bypass switch 3012
- Seven (7) distribution and total bays including A-frames, trusses, insulators, disconnect switches, mobile disconnect, surge arresters, 12.5 kV operating and transfer bus, bus potential transformers, and metering current transformers
- One (1) total circuit breaker BU600
- One (1) underfrequency relay panel (27)
- One (1) station service SS3
- One (1) control house (24' x 36') with battery, battery charger and appurtenances
- Substation property, ground grid, gravel, fencing and other appurtenances

10. Operational Responsibilities of Each Party:

- Each Party is responsible for the operation of the equipment it owns.

11. Maintenance Responsibilities of Each Party:

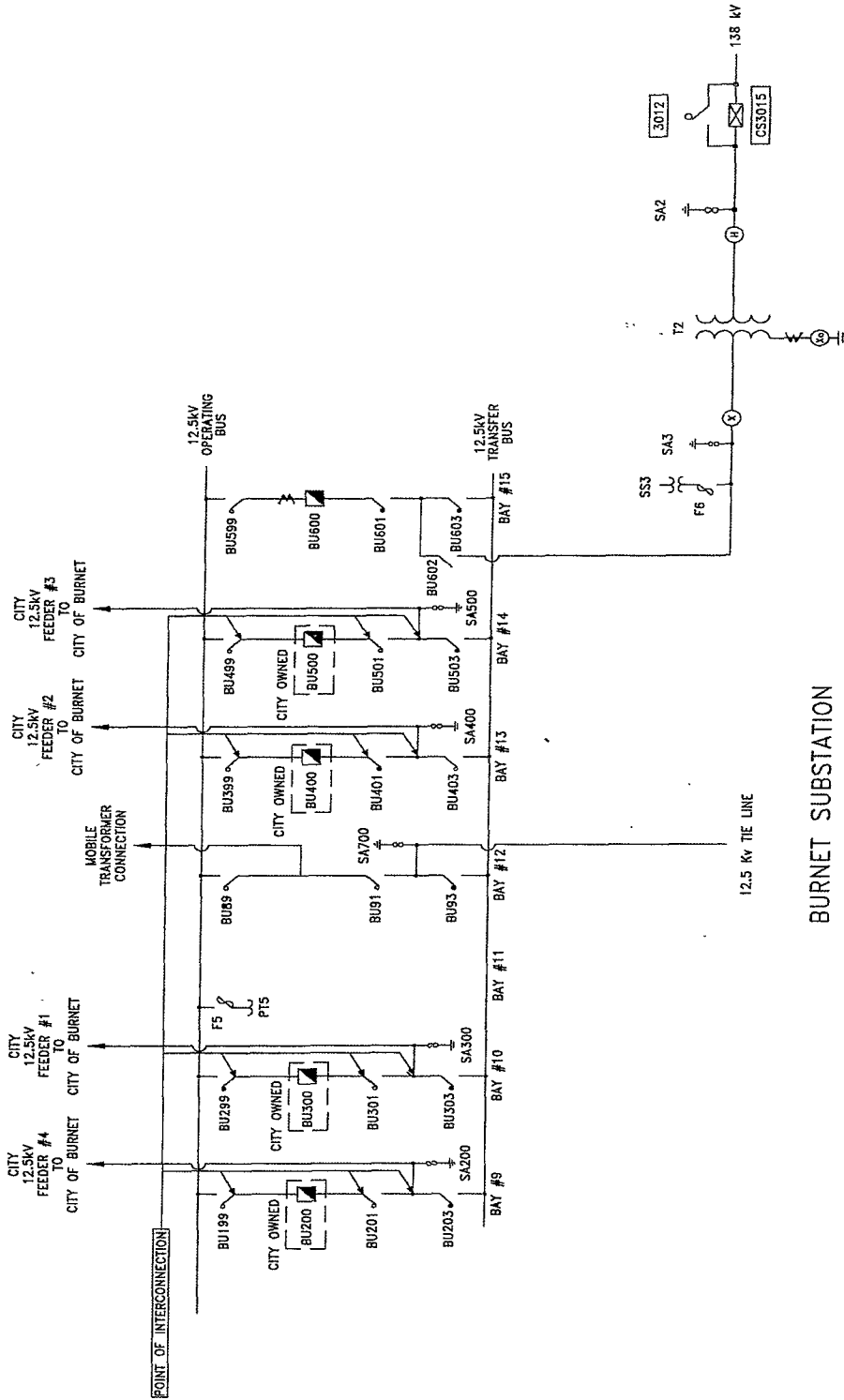
- Each Party will be fully responsible for the maintenance of the equipment it owns.

12. Other Terms and Conditions:

- The City and LCRA TSC are to share access to the substation by LCRA TSC locks in the gate and in the control house doors.
- LCRA TSC will provide City access to 125 VDC and 120 VAC power. Circuits must have over current protection devices (OCPD) sized according to NEC standards. Panel boards containing the OCPD may belong to either LCRA TSC (if space is available) or City.
- LCRA TSC will provide City with floor space (as available and as necessary) in its control house for the installation of City required panels and equipment.

BURNET ONE-LINE DIAGRAM

Amendment #2



BURNET SUBSTATION

THIS IS NOT A COMPLETE ONE-LINE DIAGRAM

FOR A COMPLETE ONE-LINE DIAGRAM OF THIS

SUBSTATION, REFER TO DWG S109-E-0001-01 AND S109-E-0001-02.

THIS ONE-LINE DIAGRAM CONTAINS PORTIONS OF BOTH.