

FACILITY SCHEDULE NO. 14

1. **Name:** North Sonora
2. **Facility Location:** The Point of Interconnection (“POI”) is located at the north end of the Company’s 12.5 kV, 3 phase distribution line which terminates at the Company - Cooperative certification boundary three and a half (3.5) mi. north of Sonora, TX, and one and a half (1.5) miles west of Highway 277 in Sutton County. More specifically, the POI is where Company’s jumpers physically connect to Cooperative’s distribution conductors terminated on the meter pole.
3. **Delivery Voltage:** 12.5 kV
4. **Metered Voltage:** 12.5 kV
5. **Loss Adjustment Due To Meter Location:** No
6. **Normal Operation of Interconnection:** Closed
7. **One-Line Diagram Attached:** Yes
8. **Facilities Ownership Responsibilities of the Parties:**
 - A. **Company owns the following facilities:**
 - i. the Sonora substation and all the facilities within it
 - ii. the distribution feeder facilities from the Sonora substation to the source side of the POI
 - iii. the meter pole and associated metering equipment
 - iv. the oil circuit recloser (R91710)
 - B. **Cooperative owns the following facilities:**
 - i. the distribution feeder facilities on the load side of the POI
9. **Operation Responsibilities of Each Party:**
Each Party will operate the facilities it owns.
10. **Maintenance Responsibilities of Each Party:**
Each Party will maintain the facilities it owns at its own expense.
11. **Estimated Peak Load:** 742 kW
12. **Other Terms and Conditions:**
Cooperative is to have access to OCR (R91710)

[The remainder of this page intentionally left blank]

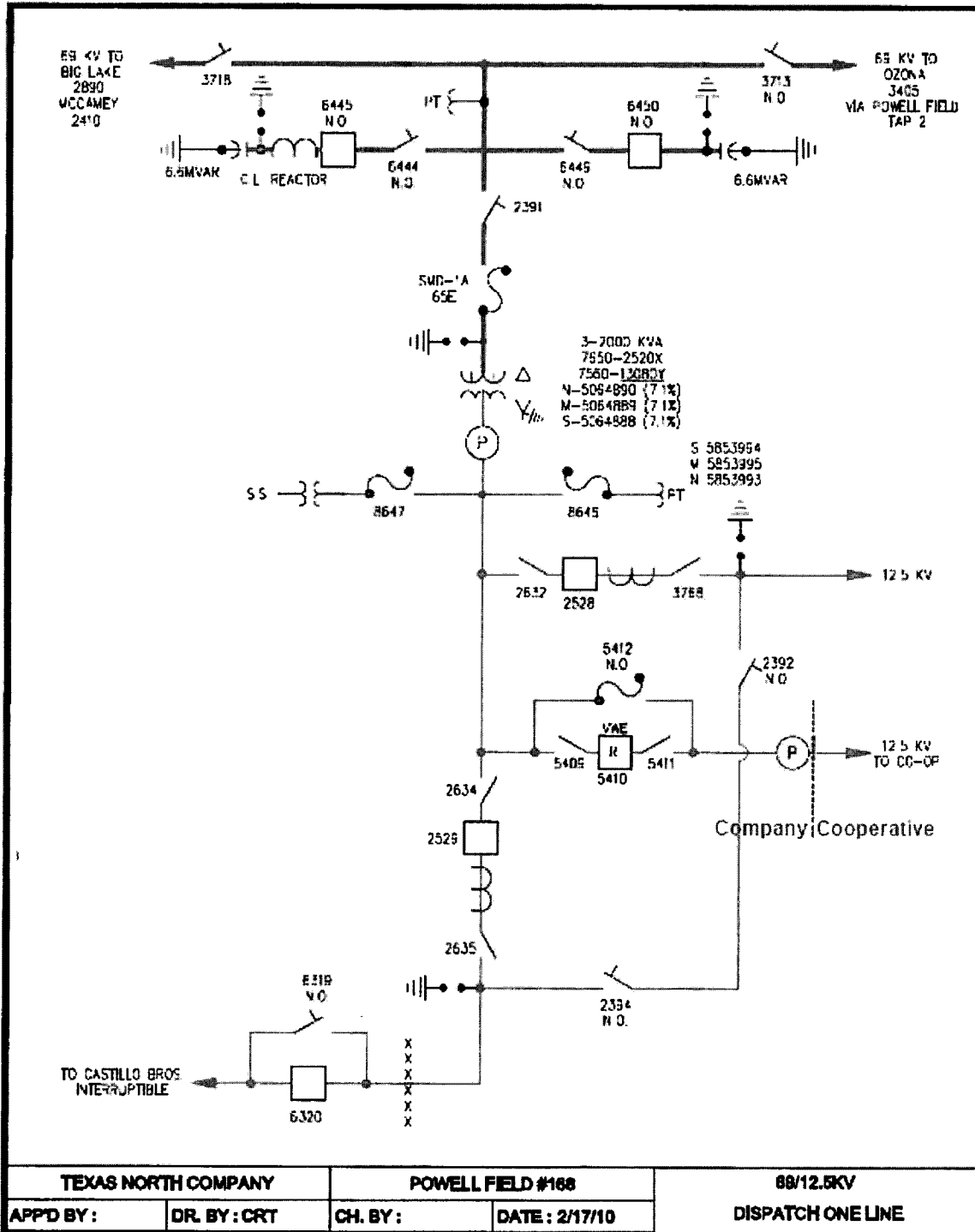
FACILITY SCHEDULE NO. 16

1. **Name:** **Powell Field**
2. **Facility Location:** The Point of Interconnection (“POI”) is at the meter pole approximately one hundred twenty-five (125) feet southwest of Company’s Power Field Substation (“Substation”) which is located approximately four (4) miles west of Big Lake, Texas, on US 67, then south on Ranch 1676 Spur County Road for thirteen (13) miles, in Crockett County. More specifically, the POI is where the Company’s jumper conductors physically connect to Cooperative’s distribution conductors terminating on the meter pole.
3. **Delivery Voltage:** 12.5 kV
4. **Metered Voltage:** 12.5 kV
5. **Loss Adjustment Due To Meter Location:** No
6. **Normal Operation of Interconnection:** Closed
7. **One-Line Diagram Attached:** Yes
8. **Facilities Ownership Responsibilities of the Parties:**
 - A. **Company owns the following facilities:**
 - i. the Substation and all the facilities within it
 - ii. approximately 125 feet of 12.5 kV distribution feeder serving the POI
 - iii. the meter pole
 - iv. the metering facilities
 - B. **Cooperative owns the following facilities:**
 - i. the facilities on the load-side of the meter
9. **Operation Responsibilities of Each Party:**

Each Party will operate the facilities it owns.
10. **Maintenance Responsibilities of Each Party:**

Each Party will maintain the facilities it owns at its own expense.
11. **Estimated Peak Load:** 926 kW
12. **Other Terms and Conditions:**
 - i. Cooperative is to have access to OCR 5410 and load side disconnect switch 5411
 - ii. Recloser 5410 is leased from Cooperative

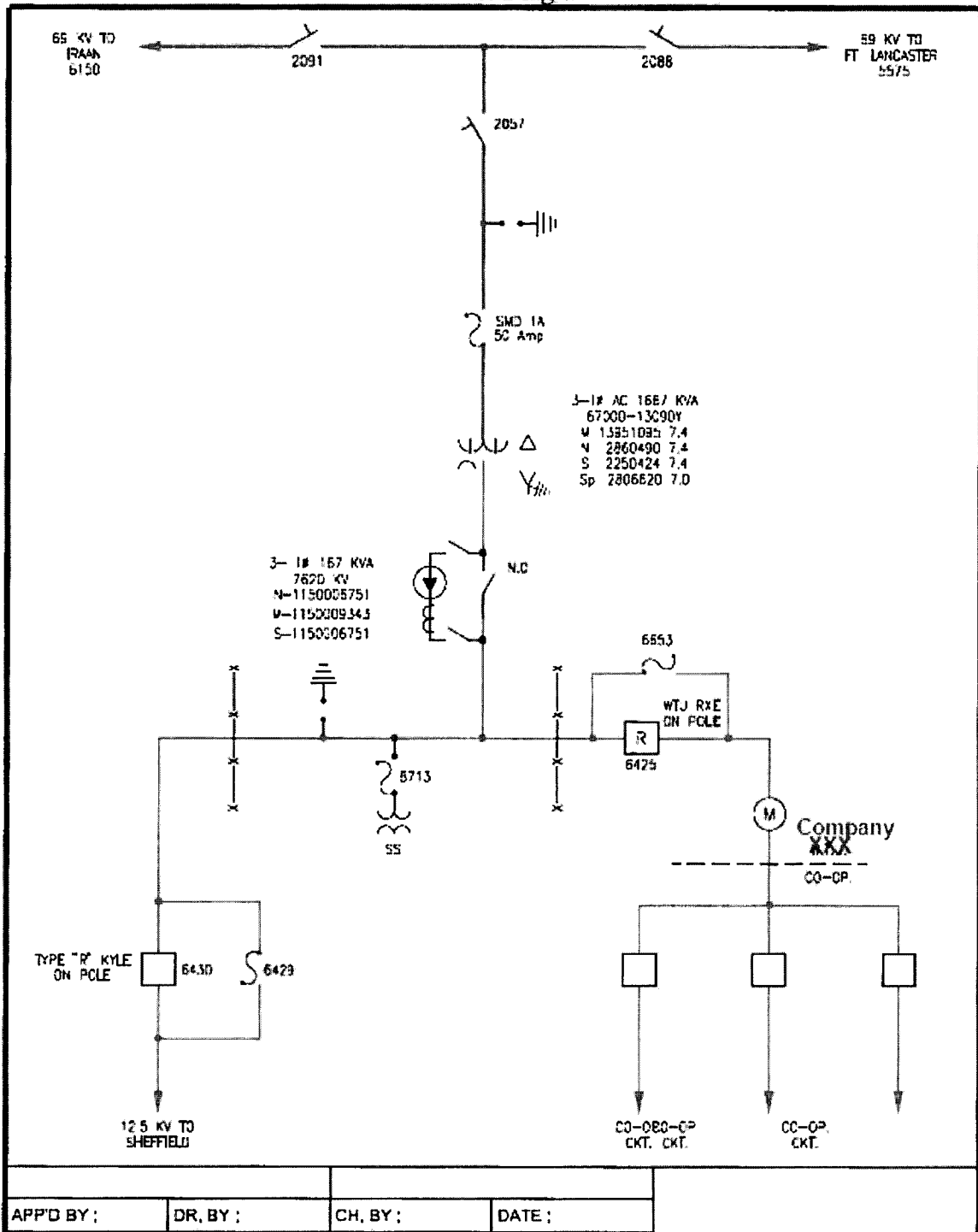
FACILITY SCHEDULE NO. 16 (continued)
One-Line Diagram



TEXAS NORTH COMPANY		POWELL FIELD #168	
APP'D BY:	DR. BY: CRT	CH. BY:	DATE: 2/17/10

69/12.5KV
DISPATCH ONE LINE

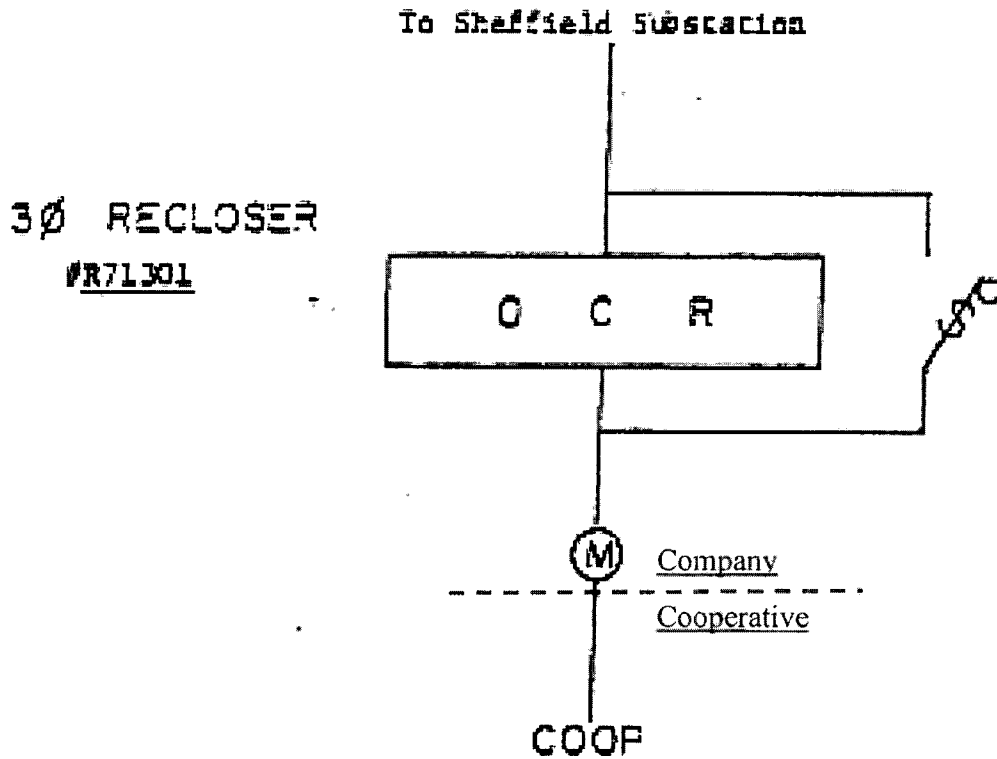
FACILITY SCHEDULE NO. 17 (continued)
One-Line Diagram



FACILITY SCHEDULE NO. 17(continued)
One-Line Diagram

SHEFFIELD SUB

ONE LINE DIAGRAM FOR EXHIBIT A



1. Southwest Texas Electric Co-op is to have access to OCR #R7LJ01.

FACILITY SCHEDULE NO. 18

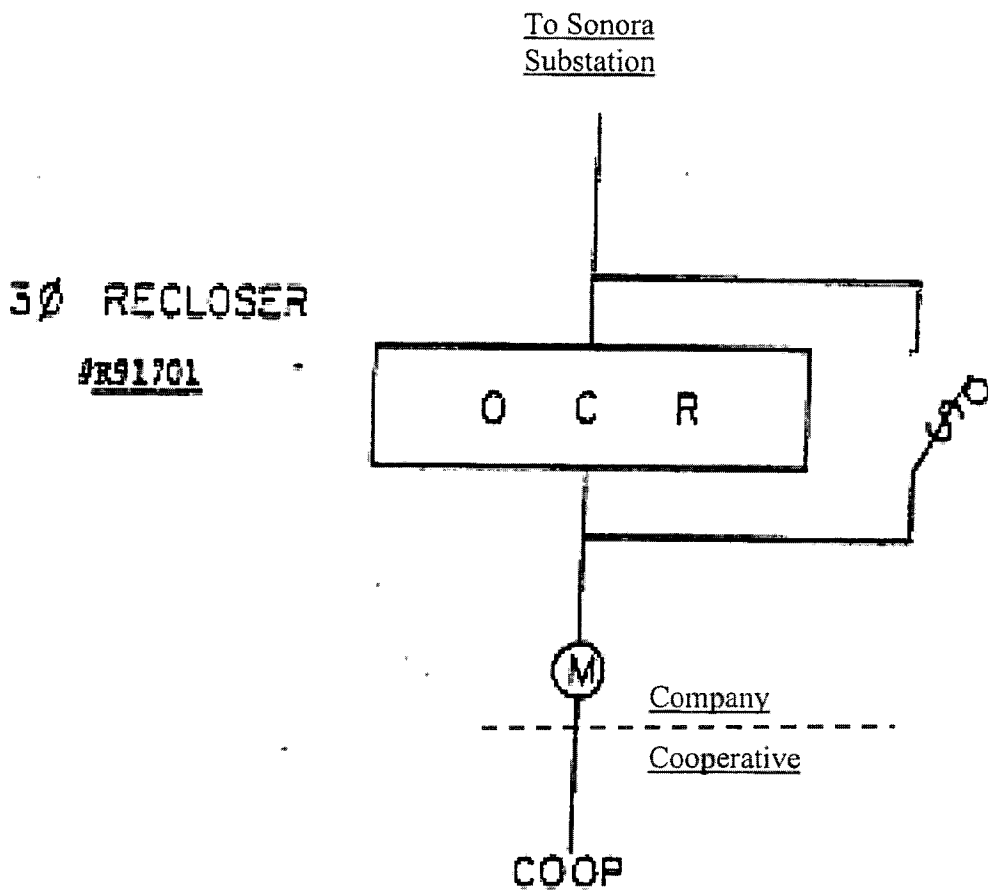
1. **Name:** Sonora
2. **Facility Location:** The Point of Interconnection (“POI”) is near the south edge of Sonora, Texas, a quarter (0.25) mile off Highway 277 on the east side. More specifically, the POI is where the Company’s jumper conductors physically connect to Cooperative’s distribution conductors terminating on the meter pole.
3. **Delivery Voltage:** 12.5 kV
4. **Metered Voltage:** 12.5 kV
5. **Loss Adjustment Due To Meter Location:** No
6. **Normal Operation of Interconnection:** Closed
7. **One-Line Diagram Attached:** Yes
8. **Facilities Ownership Responsibilities of the Parties:**
 - A. **Company owns the following facilities:**
 - i. the 12.5 kV distribution feeder from the Sonora Substation (“Substation”) serving the POI
 - ii. the Substation and all the facilities within it
 - iii. the meter pole
 - iv. the metering facilities
 - v. the OCR (R91701)
 - B. **Cooperative owns the following facilities:**
 - i. the facilities on the load-side of the meter
9. **Operation Responsibilities of Each Party:**
Each Party will operate the facilities it owns.
10. **Maintenance Responsibilities of Each Party:**
Each Party will maintain the facilities it owns at its expense.
11. **Estimated Peak Load:** 1,921 kW
12. **Other Terms and Conditions:**
Cooperative is to have access to OCR R91701

[The remainder of this page intentionally left blank]

FACILITY SCHEDULE NO. 18 (continued)
One-Line Diagram

SONORA 138/69/12 KV

ONE LINE DIAGRAM FOR EXHIBIT A



1. Southwest Texas Electric Co-op is to have access to OCR #R91701.

FACILITY SCHEDULE NO. 20

1. **Name:** Strauss Ranch
2. **Facility Location:** The Point of Interconnection (“POI”) is in Cooperative’s Strauss Ranch Substation (“Substation”), 10.4 miles south of Big Lake, Texas, Reagan County, on eastside and adjacent to Hwy 137. More specifically, the POI is located within the Substation at the high-side connection of the radial in-line disconnect switch (5328).
3. **Delivery Voltage:** 69 kV
4. **Metered Voltage:** 12.5 kV
5. **Loss Adjustment Due To Meter Location:** No
6. **Normal Operation of Interconnection:** Closed
7. **One-Line Diagram Attached:** Yes
8. **Facilities Ownership Responsibilities of the Parties:**
 - A. **Company owns the following facilities:**
 - i. the Ozona to Big Lake 69 kV transmission line
 - ii. the in-line switches (3533 and 3528) in the Ozona to Big Lake transmission line
 - B. **Cooperative owns the following facilities:**
 - i. the Substation and all the facilities within it
 - ii. the radial in-line disconnect switch (5328) to the Substation
9. **Operation Responsibilities of Each Party:**

Each Party will operate the facilities it owns.
10. **Maintenance Responsibilities of Each Party:**

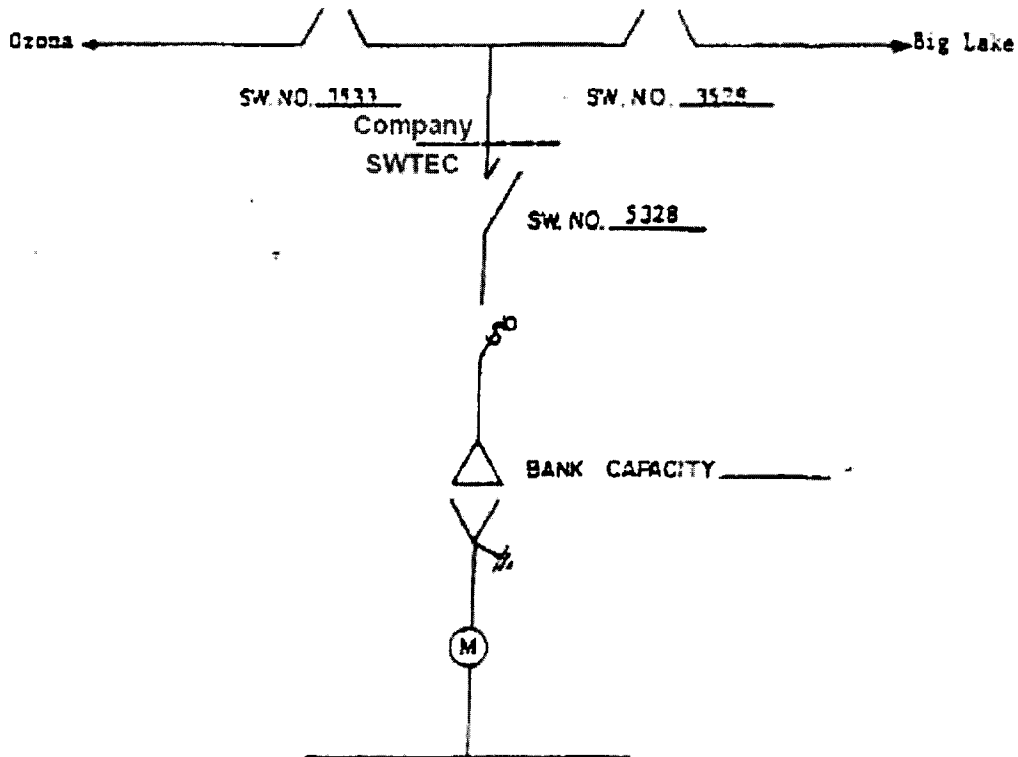
Each Party will maintain the facilities it owns at its own expense.
11. **Estimated Peak Load:** 4,000 kW
12. **Other Terms and Conditions:**
 - i. Company is to have access to switch 5328
 - ii. PT & CT sold to Cooperative

[The remainder of this page intentionally left blank]

FACILITY SCHEDULE NO. 20 (continued)
One-Line Diagram

Serauss

ONE LINE DIAGRAM FOR EXHIBIT A



Company

1. ~~XTR~~ is to have access to bank switch #5328.
2. Dashed line indicates change of ownership.

FACILITY SCHEDULE NO. 21

1. **Name:** Tippet/McCamey
2. **Facility Location:** The Point of Interconnection (“POI”) is approximately ten (10) miles south of McCamey, Texas, in Pecos County, on Country Road 305. More specifically, the POI is where the Company’s jumper conductors physically connect to Cooperative’s distribution conductors terminating on the meter pole.
3. **Delivery Voltage:** 12.5 kV
4. **Metered Voltage:** 12.5 kV
5. **Loss Adjustment Due To Meter Location:** No
6. **Normal Operation of Interconnection:** Closed
7. **One-Line Diagram Attached:** Yes
8. **Facilities Ownership Responsibilities of the Parties:**
 - A. **Company owns the following facilities:**
 - i. the 12.5 kV distribution feeder from the Company’s McCamey substation serving the POI
 - ii. the meter pole
 - iii. the metering facilities
 - B. **Cooperative owns the following facilities:**
 - i. the facilities on the load-side of the meter
9. **Operation Responsibilities of Each Party:**

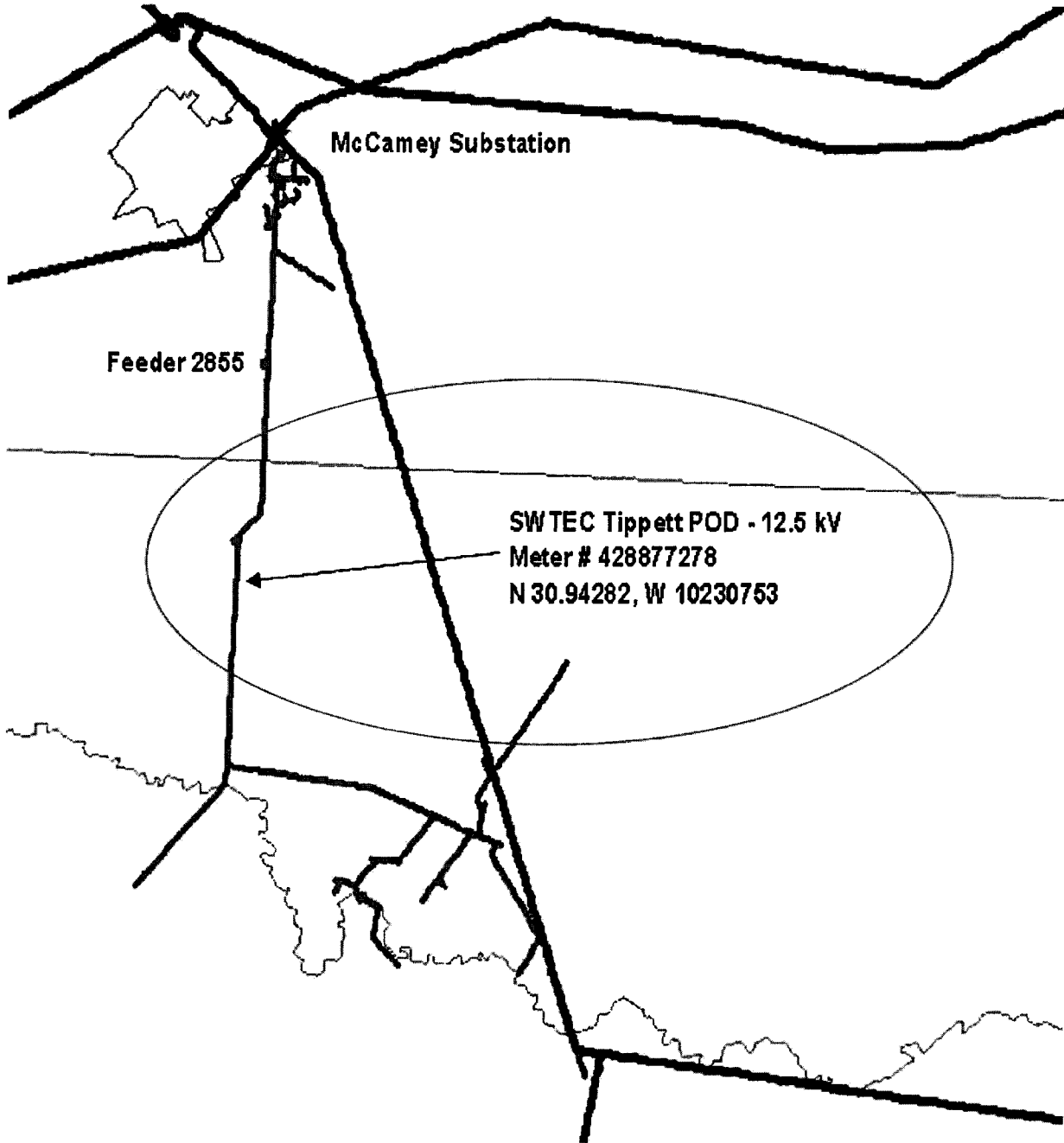
Each Party will operate the facilities it owns.
10. **Maintenance Responsibilities of Each Party:**

Each Party will maintain the facilities it owns at its own expense.
11. **Estimated Peak Load:** 274 kW
12. **Other Terms and Conditions:**

On Primary Substation Rate

[The remainder of this page intentionally left blank]

FACILITY SCHEDULE NO. 21(continued)
One-Line Diagram



FACILITY SCHEDULE NO. 22

1. **Name:** Walker Field/Mesa View
2. **Facility Location:** The Point of Interconnection (“POI”) is approximately fifteen (15) miles south of McCamey, Texas, in Pecos County, on Highway 305. More specifically, the POI is where the Company’s jumper conductors physically connect to Cooperative’s distribution conductors terminating on the meter pole.
3. **Delivery Voltage:** 12.5 kV
4. **Metered Voltage:** 12.5 kV
5. **Loss Adjustment Due To Meter Location:** No
6. **Normal Operation of Interconnection:** Closed
7. **One-Line Diagram Attached:** Yes
8. **Facilities Ownership Responsibilities of the Parties:**
 - A. **Company owns the following facilities:**
 - i. the 12.5 kV distribution feeder from the Company’s Mesa View substation serving the POI
 - ii. the meter pole
 - iii. the metering facilities
 - B. **Cooperative owns the following facilities:**
 - i. the 12.5 kV distribution feeder
9. **Operation Responsibilities of Each Party:**

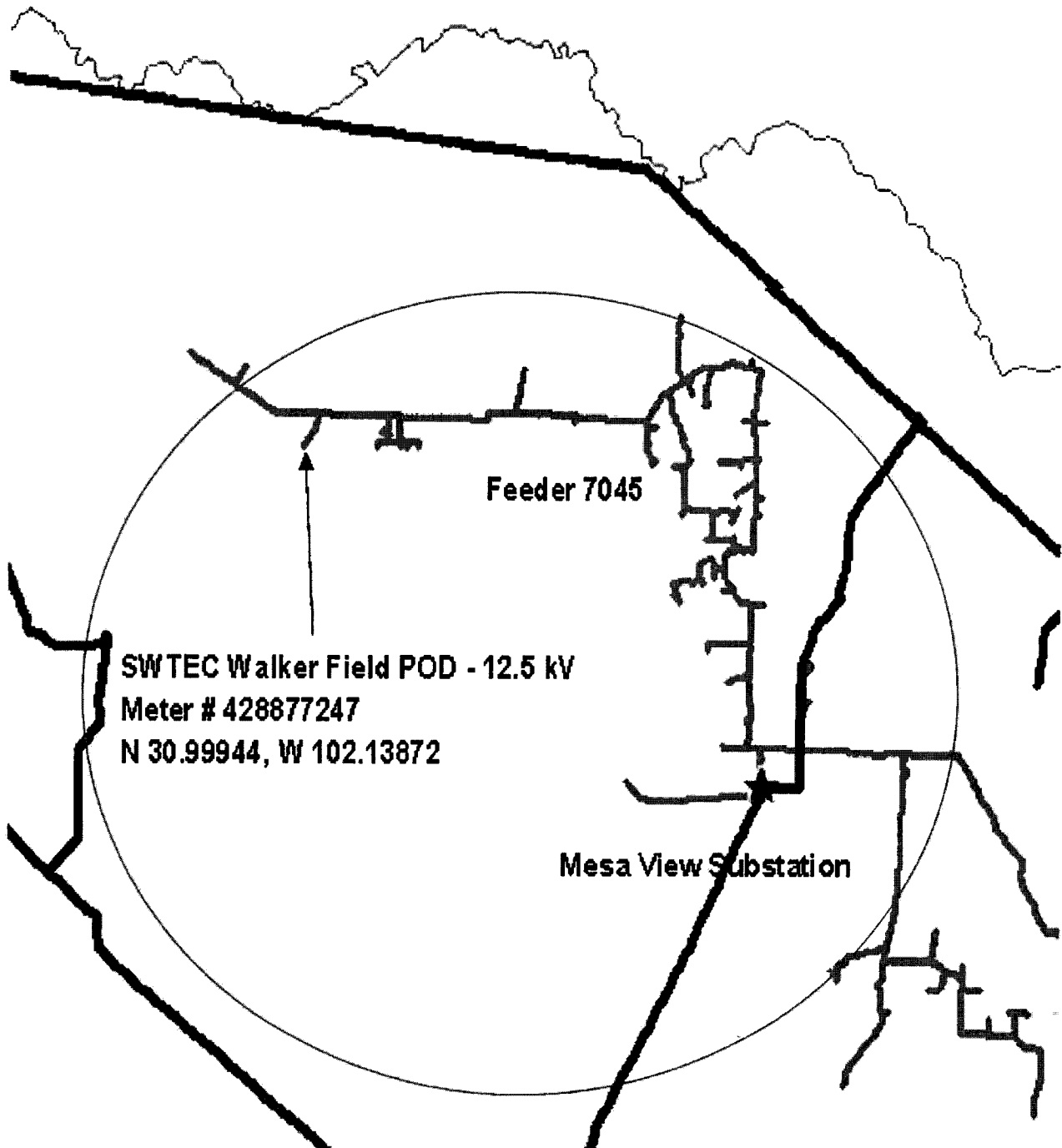
Each Party will operate the facilities it owns.
10. **Maintenance Responsibilities of Each Party:**

Each Party will maintain the facilities it owns at its own expense.
11. **Estimated Peak Load:** 503 kW
12. **Other Terms and Conditions:**

On Primary Substation Rate

[The remainder of this page intentionally left blank]

FACILITY SCHEDULE NO. 22(continued)
One-Line Diagram



FACILITY SCHEDULE NO. 24

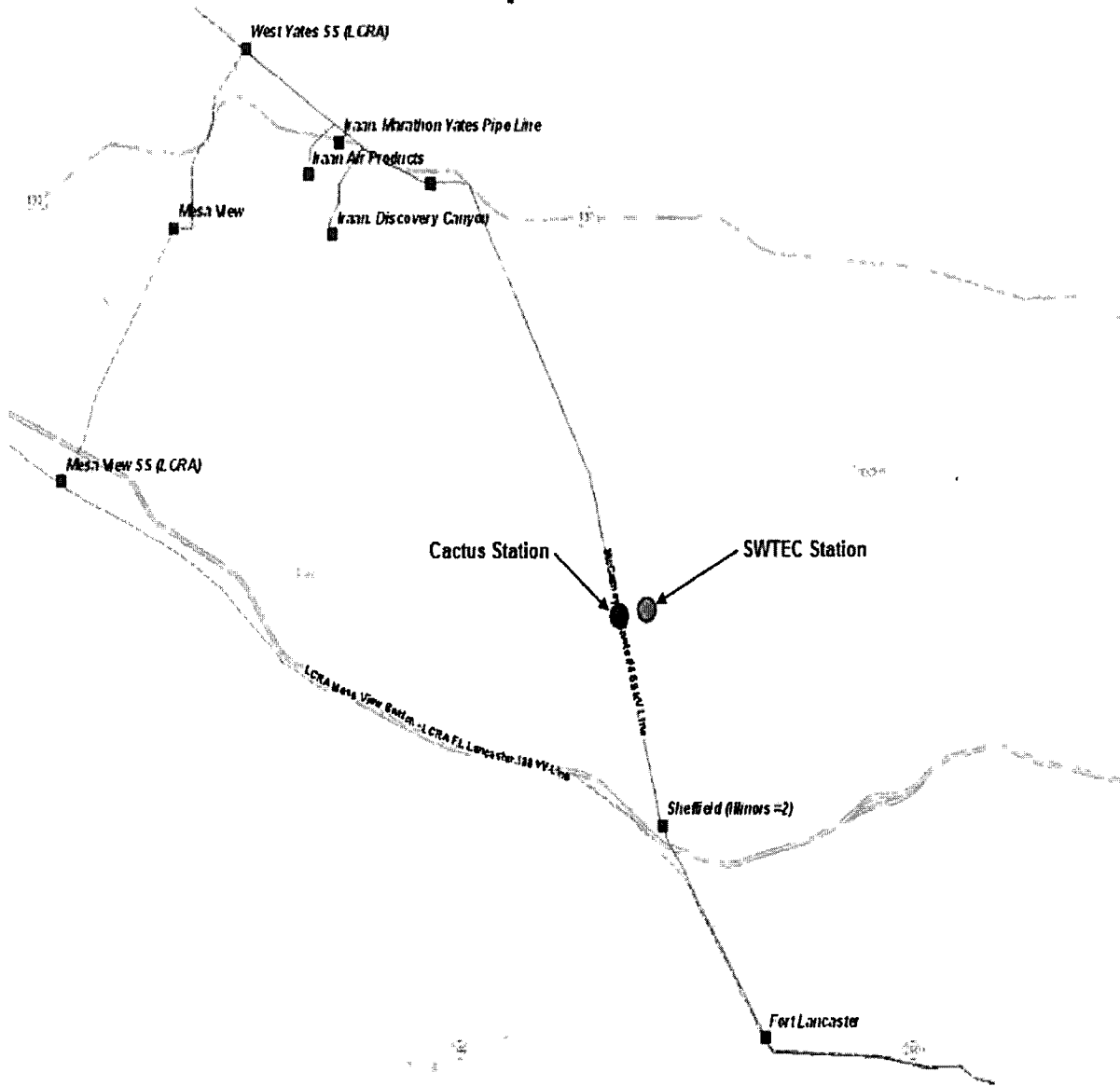
1. **Name:** Pecos River
2. **Facility Location:** The Cooperative's Pecos River Substation ("Substation") is located approximately 8.5 miles north of Sheffield, Texas, east of State Road 349, near the intersection of Deer Canyon Rd and River Rd in Crockett County. The Point of Interconnection is located at the dead-end structure in the Substation, where the jumper conductors from the Substation equipment physically contact the connectors on the Company's 69 kV transmission line conductors from Company's Cactus tap ("Cactus").
3. **Delivery Voltage:** 69 kV
4. **Metered Voltage:** 12.5 kV
5. **Loss Adjustment Due To Meter Location:** Yes
6. **Normal Operation of Interconnection:** Closed
7. **One-Line Diagram Attached:** Yes
8. **Facilities Ownership Responsibilities of the Parties:**
 - A. **Company owns the following facilities:**
 - i. the Cactus tap structure with three (3) switches in the Ft Lancaster to West Yates 69 kV transmission line
 - ii. the Ft Lancaster to West Yates 69 kV transmission line
 - iii. approximately 4300 feet of 69 kV transmission line from Cactus to the Substation dead-end structure
 - iv. meter and associated meter equipment on the load side of the Substation transformer.
 - B. **Cooperative owns the following facilities:**
 - i. all facilities within the Substation, except Company's meter and associated meter equipment provided hereinabove
9. **Operational Responsibilities of Each Party:**

Each party will operate the facilities it owns
10. **Maintenance Responsibilities of Each Party:**

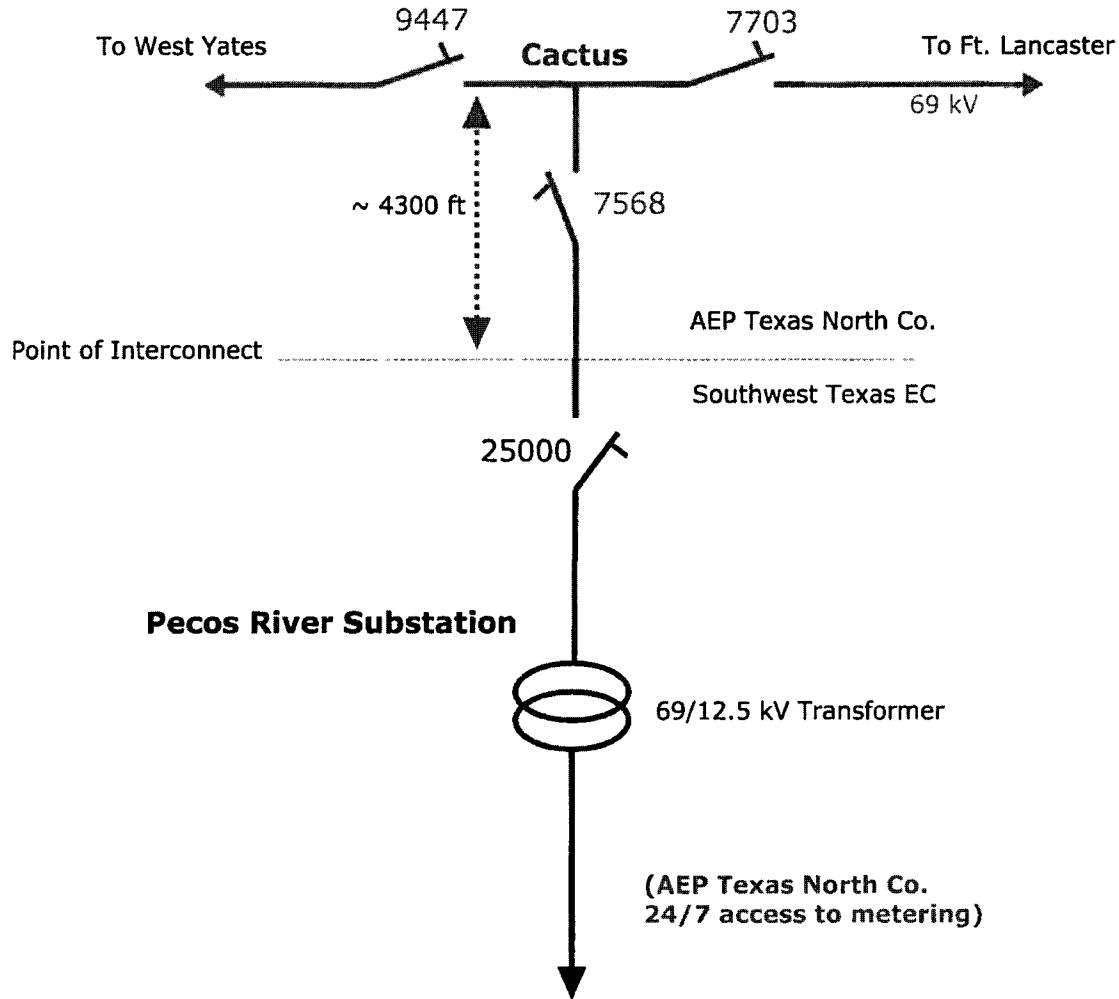
Each Party will maintain the facilities it owns at its own expense
11. **Estimated Peak Load:** 6,232 kW
12. **Other Terms and Conditions:** None


FACILITY SCHEDULE NO. 24(continued)

Map of Area



FACILITY SCHEDULE NO. 24 (continued)
One-Line Diagram



 AEP Texas North Co. Facilities
 Southwest Texas EC Facilities

FACILITY SCHEDULE NO. 26

1. **Name:** Northern Natural Line
2. **Facility Location:** The Point of Interconnection (“POI”) is approximately 13.5 miles northwest of Eldorado, Texas, in Schleicher County. More specifically, the POI is where Company’s jumpers physically connect to the Cooperative’s primary conductors terminating on the tap pole.
3. **Delivery Voltage:** 12.5 kV
4. **Metering Voltage:** 12.5 kV
5. **Loss Adjustment Due To Meter Location:** None
6. **Normal Operation of Interconnection:** Closed
7. **One-Line Diagram Attached:** Yes
8. **Facilities Ownership Responsibilities of the Parties:**
 - A. **Company owns the following facilities:**
 - i. 12.5 kV distribution feeder including all facilities the distribution feeder needs to accommodate and serve the POI
 - ii. the meter pole
 - iii. the metering facilities
 - iv. the tap pole
 - B. **Cooperative owns the following facilities:**
 - ii. the facilities on the load-side of the tap pole
 - iii. overcurrent devices at the POI
 - iv. SCADA meter in series/parallel with the Company CTs/PTs
9. **Facility Operation Responsibilities of the Parties:**

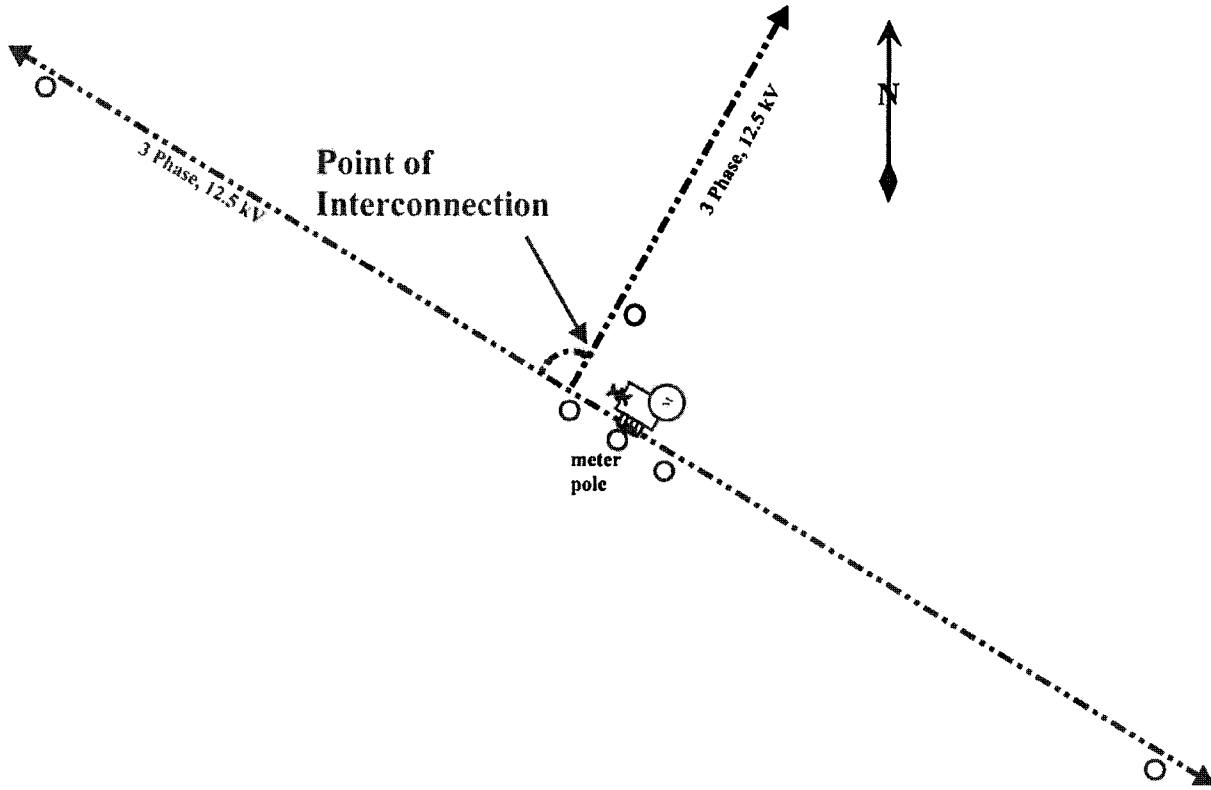
Each Party will operate the facilities it owns.
10. **Facility Maintenance Responsibilities of the Parties:**

Each Party will maintain the equipment it owns at its expense.
11. **Estimated Peak Load:** 900 kW
12. **Other Terms and Conditions:** None

[The remainder of this page intentionally left blank]

FACILITY SCHEDULE NO. 26 (continued)

Conceptual One-line Drawing of Point of Interconnect



Company
SWTEC



Conceptual Drawing
Not to scale

FACILITY SCHEDULE NO. 27

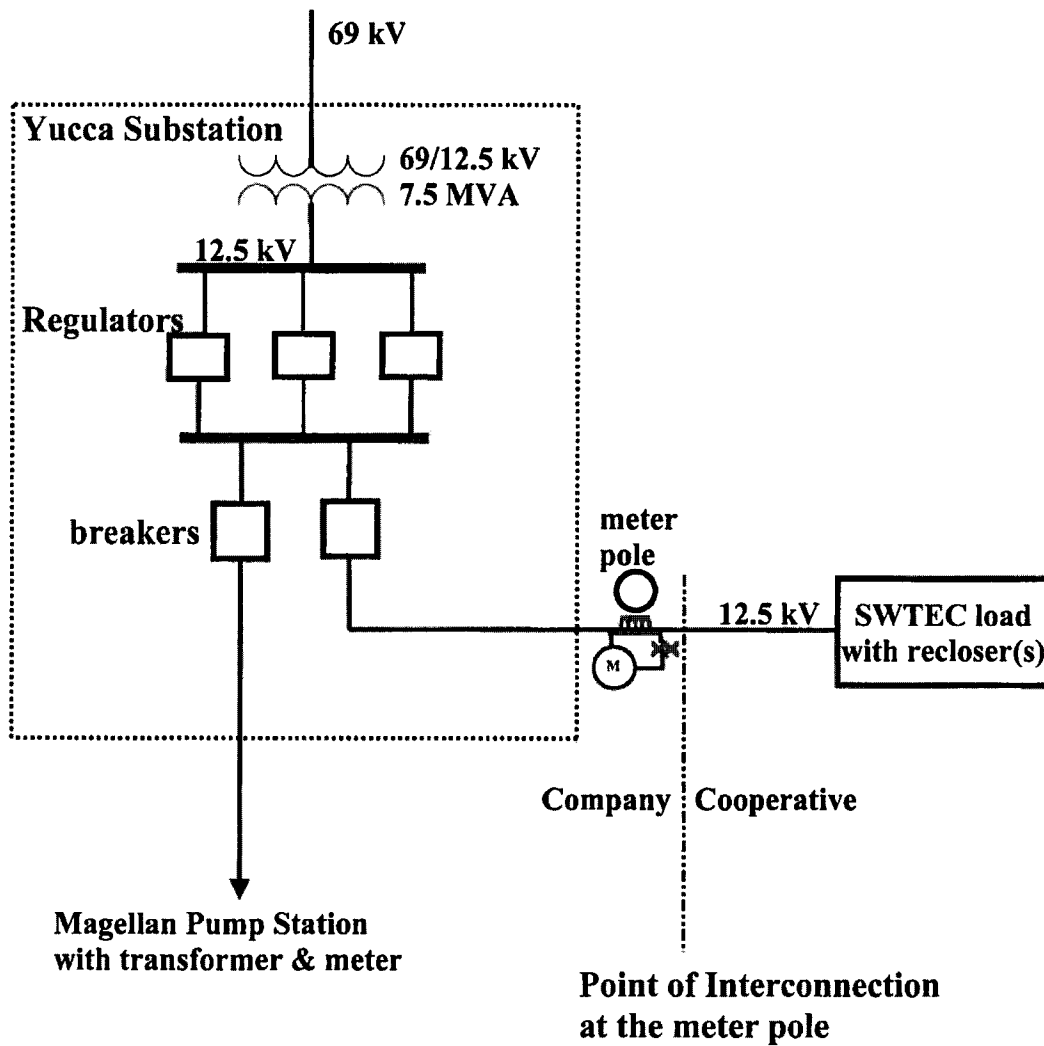
1. **Name:** Yucca
2. **Facility Location:** The Point of Interconnection (“POI”) (30° 59’ 26.70” N., 101° 04’ 37.704” W.), is located in Crockett County, Texas, within the Company’s Yucca Substation (“Substation”). More specifically, the POI is where Company’s jumpers from the meter pole physically connect to the Cooperative’s primary conductors terminating on the meter pole.
3. **Delivery Voltage:** 12.5 kV
4. **Metering Voltage:** 12.5 kV
5. **Loss Adjustment Due To Meter Location:** None
6. **Normal Operation of Interconnection:** Closed
7. **One-Line Diagram Attached:** Yes
8. **Facilities Ownership Responsibilities of the Parties:**
 - A. **Company owns the following facilities:**
 - i. the Substation and all the facilities within it
 - ii. the meter pole outside the Substation
 - iii. the metering facilities
 - iv. the jumpers from the meter pole
 - B. **Cooperative owns the following facilities:**
 - i. the facilities on the load-side of the meter pole
 - ii. overcurrent devices at the POI
 - iii. SCADA meter in series/parallel with the Company CTs/PTs
9. **Facility Operation Responsibilities of the Parties:**

Each Party will operate the facilities it owns.
10. **Facility Maintenance Responsibilities of the Parties:**

Each Party will maintain the equipment it owns at its expense.
11. **Estimated Peak Load:** 4000 kW
12. **Other Terms and Conditions:**

Cooperative and Company will mutually agree on the coordination of the overcurrent devices provided by Cooperative at the POI.

FACILITY SCHEDULE NO. 27 (continued)
One-Line Diagram

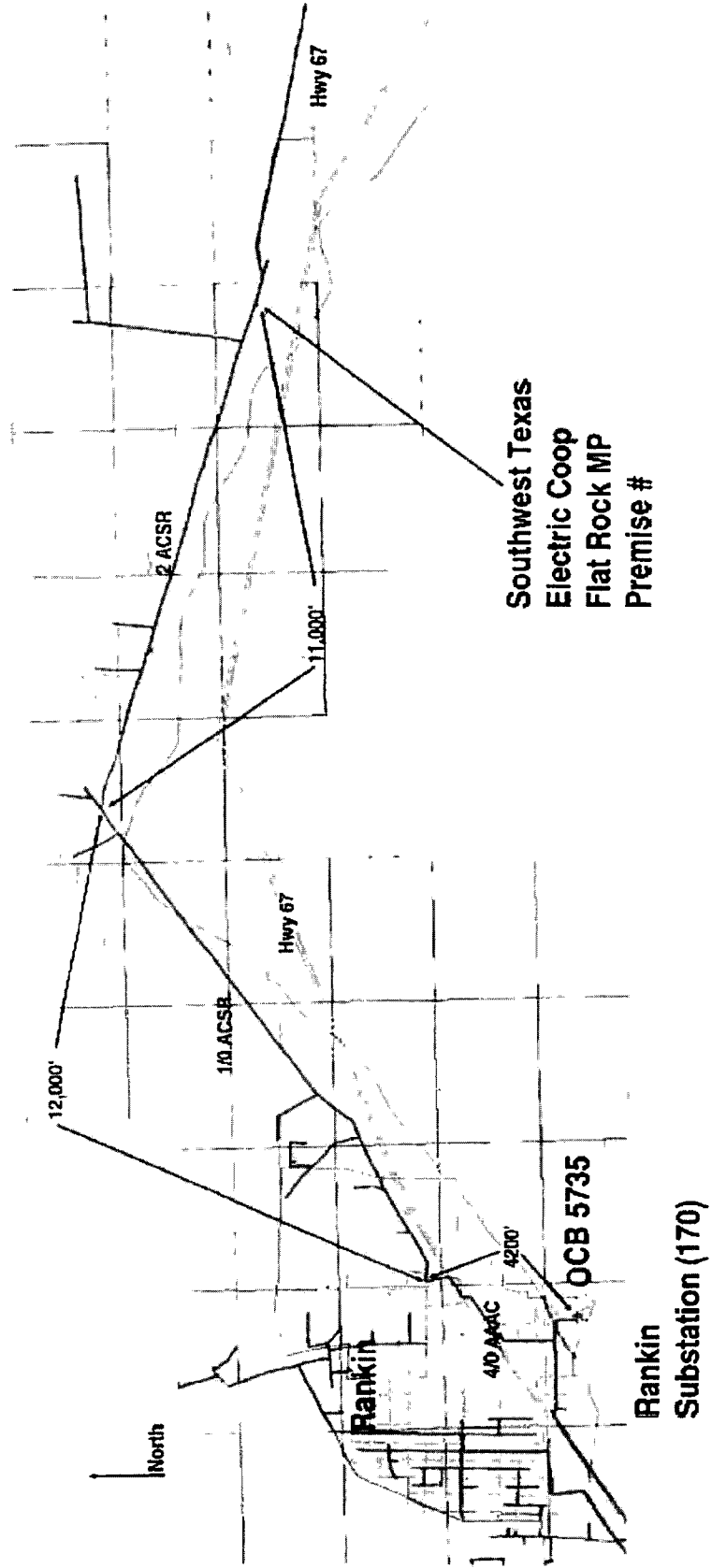


Conceptual Drawing
 Not to scale

FACILITY SCHEDULE NO. 28

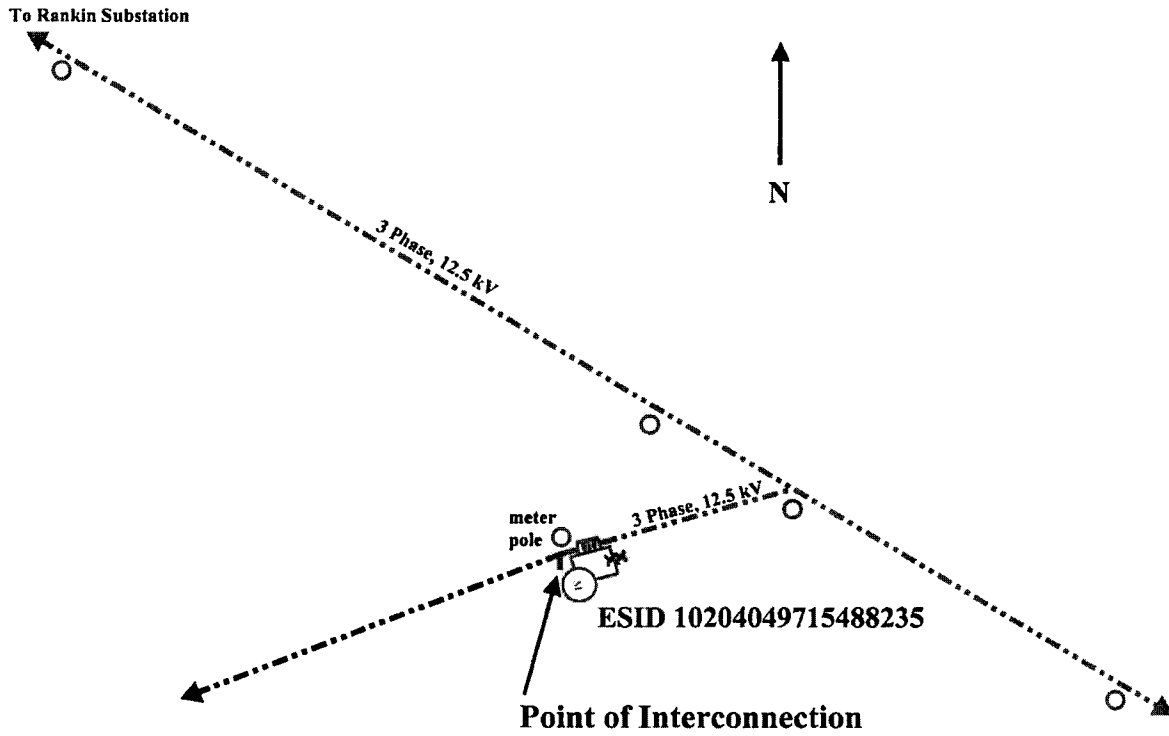
1. **Name:** Flat Rock
2. **Facility Location:** The Point of Interconnection (“POI”) (31° 14’ 06” N., 101° 52’ 15.6” W.), is located approximately 4 miles east of Rankin, and north 0.12 miles from Hwy 67 in Upton County, Texas. More specifically, the POI is where Company’s jumpers from the meter pole physically connect to the Cooperative’s primary conductors terminating on the meter pole.
3. **Delivery Voltage:** 12.5 kV
4. **Metering Voltage:** 12.5 kV
5. **Loss Adjustment Due To Meter Location:** None
6. **Normal Operation of Interconnection:** Closed
7. **One-Line Diagram Attached:** Yes
8. **Facilities Ownership:**
 - A. **Company owns the following facilities:**
 - i. the Rankin 5735, 3-phase distribution feeder
 - ii. the meter pole
 - iii. the metering facilities
 - iv. the jumpers from the meter pole
 - B. **Cooperative owns the following facilities:**
 - i. the facilities on the load-side of the meter pole
 - ii. overcurrent devices at the POI
 - iii. SCADA meter in series/parallel with the Company CT’s/PT’s
9. **Facility Operation Responsibilities of the Parties:**
Each Party will operate the facilities it owns.
10. **Facility Maintenance Responsibilities of the Parties:**
Each Party will maintain the equipment it owns at its expense.
11. **Estimated Peak Load:** 1500 kW
12. **Other Terms and Conditions:**
Cooperative and Company will mutually agree on the coordination of the overcurrent devices provided by Cooperative at the POI.



FACILITY SCHEDULE NO. 28 (continued)



FACILITY SCHEDULE NO. 28 (continued)

Conceptual One-line Drawing of Point of Interconnect



Company 
Cooperative 

Conceptual Drawing
Not to scale

FACILITY SCHEDULE NO. 29

1. **Name:** **Rock Hollow**

2. **Facility Location:** The Point of Interconnection (“POI”) is located approximately 9.7 miles northeast of Company’s Big Lake substation, in Reagan County, Texas. More specifically, the POI is at Cooperative’s first structure outside of the Company’s 138 kV box bay Jerry Substation (“Substation”) with Company owning the single span of conductors back to the Substation, and Cooperative owning the structure and remaining conductors to Cooperative’s distribution substation approximately 150 feet from the Substation.

3. **Delivery Voltage:** 138 kV

4. **Metering Voltage:** 24.9 kV

5. **Loss Adjustment Due To Meter Location:** Yes

6. **Normal Operation of Interconnection:** Closed

7. **One-Line Diagram Attached:** Yes

8. **Facilities Ownership and Installation Responsibilities of the Parties:**
 - A. **Company will install and own the following facilities:**
 - i. the Substation and all associated facilities, including but not limited to the in-line and radial switches, Substation structures and property, and the first radial span of conductor out of the Substation
 - ii. the 14.4 kV metering facilities

 - B. **Cooperative will install and own the following facilities:**
 - i. the first structure outside of Substation and remaining facilities to Cooperative’s distribution substation
 - ii. isolating protective device within 2 spans of the 138 kV POI
 - iii. SCADA meter in series/parallel with the Company CT’s/PT’s

9. **Facility Operation Responsibilities of the Parties:**

Each Party will operate the facilities it owns.

10. **Facility Maintenance Responsibilities of the Parties:**

Each Party will maintain the equipment it owns at its own expense.

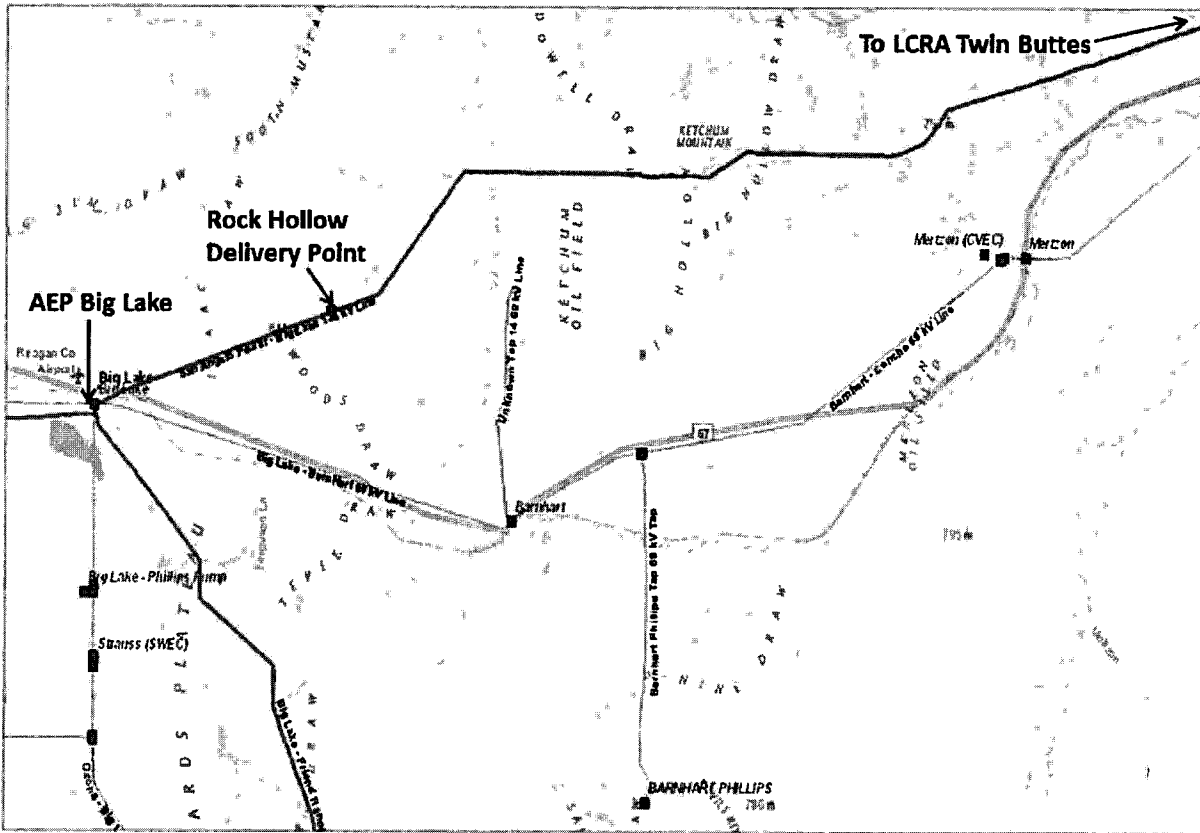
11. **Estimated Peak Load:** 15,000 kW

12. **Other Terms and Conditions:**

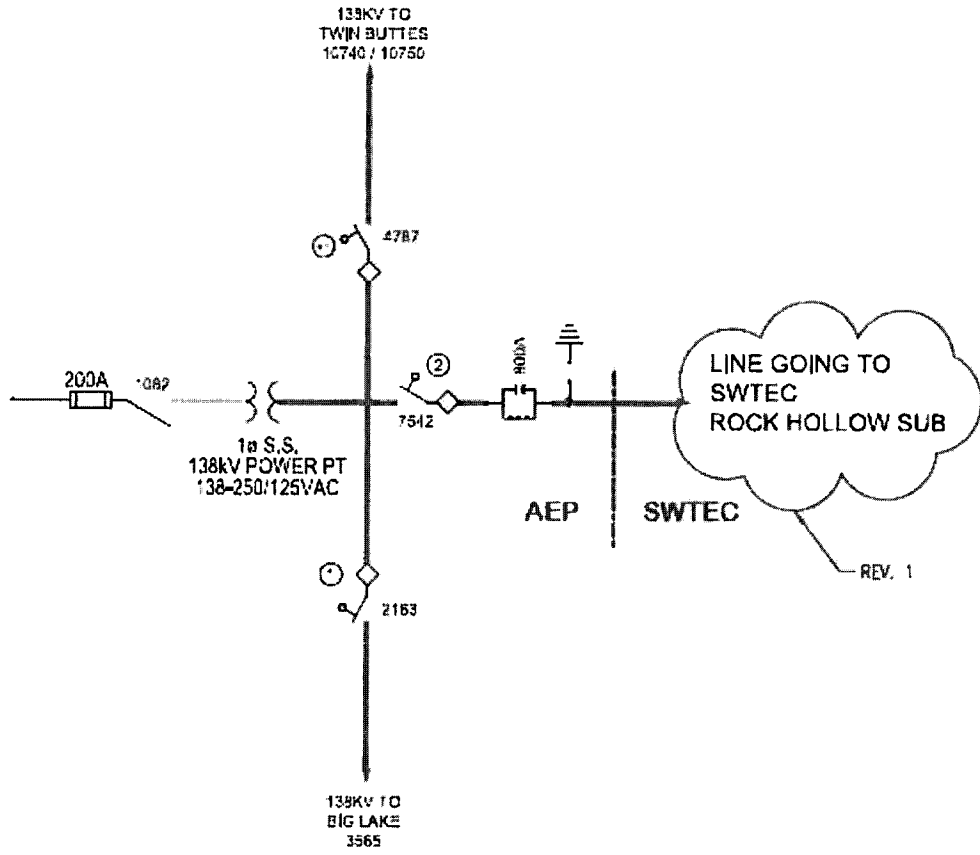
Parties mutually agree that this Facility Schedule may be amended to accurately document the final as-built design of the installed permanent interconnection facilities.

FACILITY SCHEDULE NO. 29 (continued)

Area Map



FACILITY SCHEDULE NO. 29(continued)
One Line Diagram



(1) VERTICAL BREAK, SLANTED V. COAB, MOTOR OPERATOR, ARCUING HORNS SFG INTERRUPTER

TEXAS NORTH COMPANY		JERRY SUBSTATION # 498		138KV	
APP'D BY : BG	DR. BY : MED	CH. BY :	DATE : 08-29-13	ONE LINE DIAGRAM	
		1 RIVERSIDE PLAZA COLUMBUS, OH 43215		Work Order #:	
				DWG. No, W498SO01	REV 1

FACILITY SCHEDULE NO. 30

1. **Name:** **Pandale**
2. **Facility Location:** The Point of Interconnection (“POI”) (30° 41’ 19.97” N., 101° 16’ 12.0” W.), is located approximately two (2) miles west of Ozona, Texas, in Crockett County. More specifically, the POI is where Company’s jumpers from the meter pole physically connect to the SWTEC’s primary conductors terminating on the meter pole.
3. **Delivery Voltage:** 12.5 kV
4. **Metering Voltage:** 12.5 kV
5. **Loss Adjustment Due To Meter Location:** None
6. **Normal Operation of Interconnection:** Closed
7. **One-Line Diagram Attached:** Yes
8. **Facilities Ownership Responsibilities of the Parties:**
 - A. **Company owns the following facilities:**
 - i. the Pandale, 3-phase distribution feeder
 - ii. the meter pole
 - iii. the metering facilities
 - iv. the jumpers from the meter pole
 - B. **SWTEC owns the following facilities:**
 - i. the facilities on the load-side of the meter pole
 - ii. overcurrent devices at the POI
 - iii. SCADA meter in series/parallel with the Company CT’s/PT’s
9. **Facility Operation Responsibilities of the Parties:**

Each Party will operate the facilities it owns.
10. **Facility Maintenance Responsibilities of the Parties:**

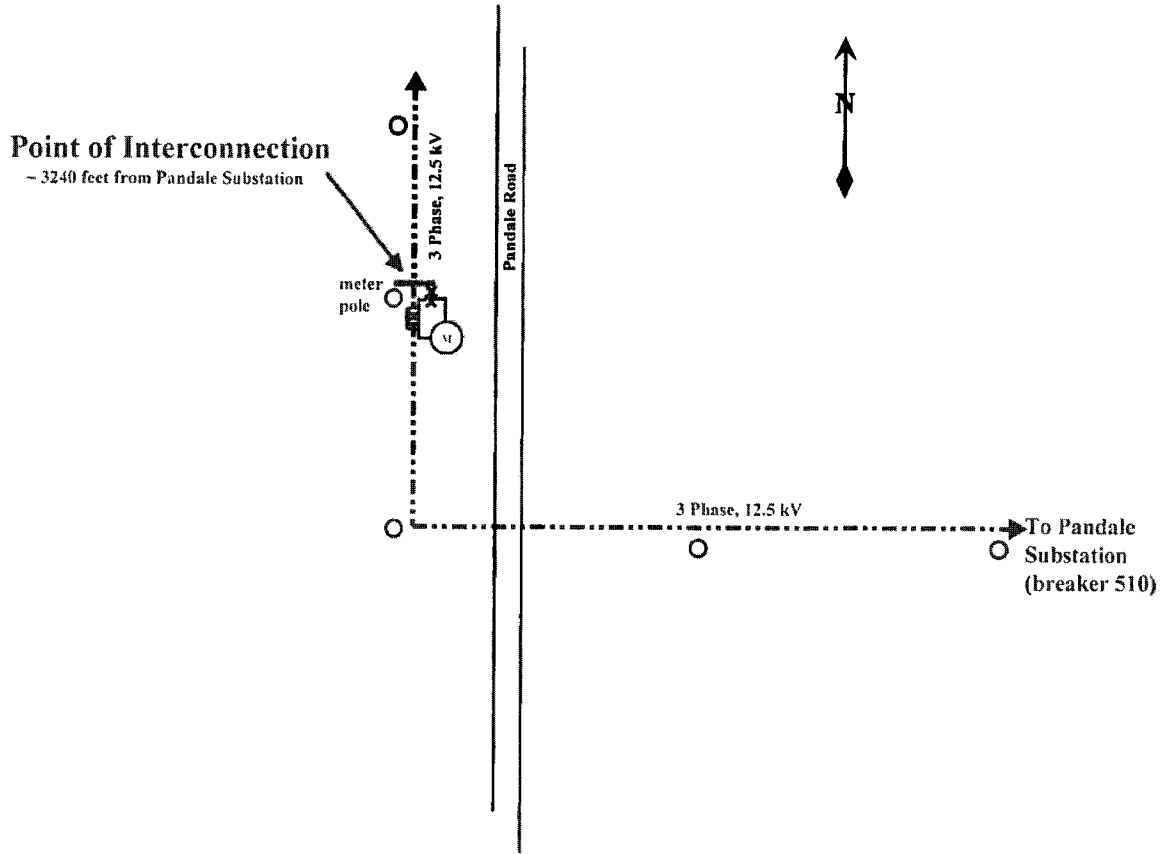
Each Party will maintain the facilities it owns at its own expense.
11. **Estimated Peak Load:** 1,500 kW
12. **Other Terms and Conditions:**

Parties will mutually agree on the coordination of the overcurrent devices provided by SWTEC at the POI.

[The remainder of this page intentionally left blank]

FACILITY SCHEDULE NO. 30 (continued)

Conceptual One-line Drawing of Point of Interconnect



Company
SWTEC

Conceptual Drawing
Not to scale

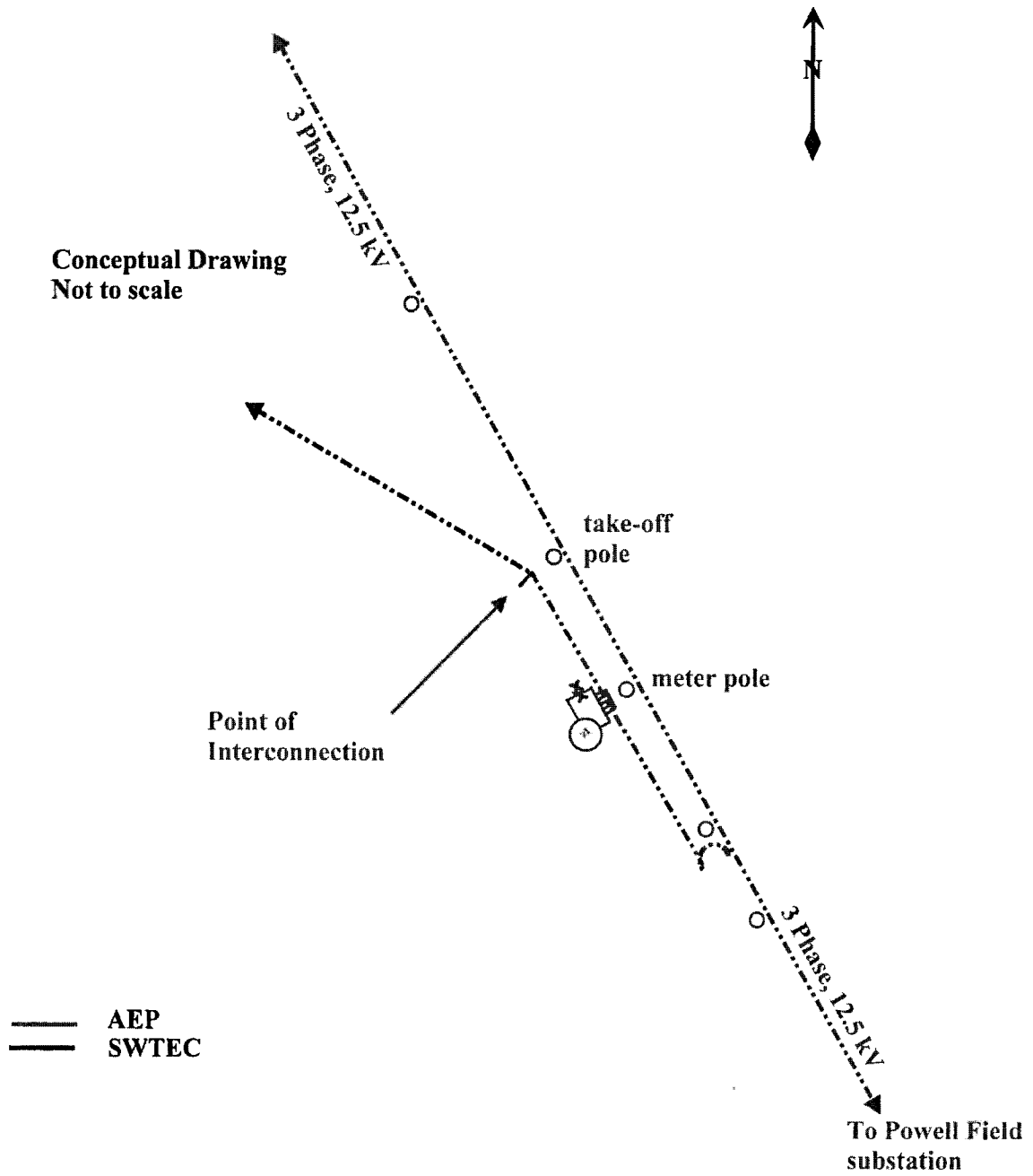
FACILITY SCHEDULE NO. 31

1. **Name:** Trinity Field
2. **Facility Location:** The Point of Interconnection (“POI”) (31° 05’ 05.93” N., 101° 37’ 20.18” W.), is located approximately 3.1 miles east of Ranch Road 1676, in Crockett County Texas. More specifically, the POI is where AEP’s jumpers from the meter pole physically connect to the SWTEC’s primary conductors terminating on the meter pole.
3. **Delivery Voltage:** 12.5 kV
4. **Metering Voltage:** 12.5 kV
5. **Loss Adjustment Due To Meter Location:** None
6. **Normal Operation of Interconnection:** Closed
7. **One-Line Diagram Attached:** Yes
8. **Facilities Ownership Responsibilities of the Parties:**
 - A. **AEP owns the following facilities:**
 - i. the Powell Field, 3-phase distribution feeder (circuit 2529)
 - ii. the meter pole
 - iii. the metering facilities
 - iv. the jumpers from the meter pole
 - B. **SWTEC owns the following facilities:**
 - i. the facilities on the load-side of the meter pole
 - ii. overcurrent devices at the POI
 - iii. SCADA meter in series/parallel with the AEP CT’s/PT’s
9. **Facility Operation Responsibilities of the Parties:**

Each Party will operate the facilities it owns.
10. **Facility Maintenance Responsibilities of the Parties:**

Each Party will maintain the facilities it owns at its own expense.
11. **Estimated Peak Load:** 1,600 kW
12. **Other Terms and Conditions:**
 - A. Parties will mutually agree on the coordination of the overcurrent devices provided by SWTEC at the POI.
 - B. Parties mutually agree that this Facility Schedule may be amended to accurately document the final as-built design of the installed interconnection facilities

FACILITY SCHEDULE NO. 31 (continued)
One Line Diagram



FACILITY SCHEDULE NO. 32

1. **Name:** **Pave Paws**

2. **Facility Location:** The Pave Paws Point of Interconnection (“POI”) (31° 00’ 17.67” N., 100° 33’ 19.51” W.), is located in Schleicher County, on the northeast corner of where County Road 303 and County Road 312 intersect, approximately 10.4 miles north of Eldorado, Texas. The POI is where AEP’s slack-span conductors from the Live Oak to Concho 69 kV transmission line terminate on the dead-end structure within the Pave Paws substation. More specifically, the POI is where SWTEC’s jumper conductors from the Pave Paws substation disconnect switch (2777) physically connect to AEP’s slack-span conductors terminating on the dead-end structure.

3. **Delivery Voltage:** 69 kV

4. **Metering Voltage:** 69 kV

5. **Loss Adjustment Due To Meter Location:** None

6. **Normal Operation of Interconnection:** Closed

7. **One-Line Diagram Attached:** Yes

8. **Facilities Ownership Responsibilities of the Parties:**
 - A. **AEP owns the following facilities:**
 - i. the Live Oak to Concho 69 kV transmission line
 - ii. the slack-span conductors

 - B. **SWTEC owns the following facilities:**
 - i. the dead-end within the Pave Paws substation
 - ii. the disconnect switch (2777)
 - iii. the 69 kV meters and metering facilities

9. **Facility Operation Responsibilities of the Parties:**

Each Party will operate the facilities it owns.

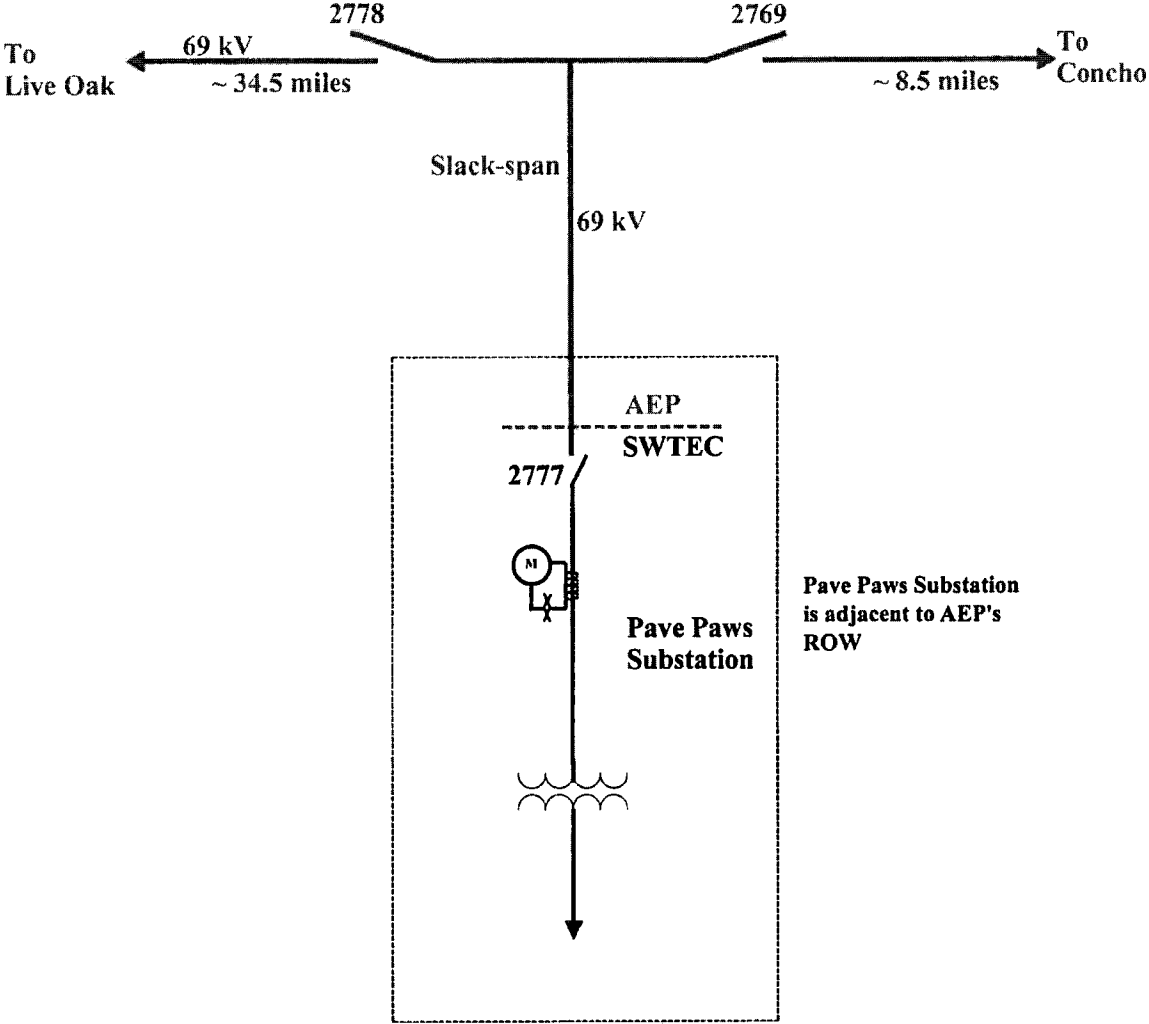
10. **Facility Maintenance Responsibilities of the Parties:**

Each Party will maintain the facilities it owns at its own expense.

13. **Estimated Peak Load:** N/A kW

14. **Other Terms and Conditions:**
 - A. Parties will mutually agree on the coordination of the overcurrent devices provided by SWTEC at the POI.
 - B. Parties mutually agree that this Facility Schedule may be amended to accurately document the final as-built design of the installed interconnection facilities

FACILITY SCHEDULE NO. 32 (continued)
One Line Diagram



———— AEP
 ———— SWTEC

Distances not to scale