



Control Number: 35077



Item Number: 604

Addendum StartPage: 0

**Project No. 35077**

**First Amendment to**

**INTERCONNECTION AGREEMENT**

**Between**

**City of San Saba**

**and**

**LCRA Transmission Services Corporation**

2015 NOV 20 PM 4:18  
PUBLIC UTILITY COMMISSION  
FILING CLERK

**Dated  
October 13, 2015**

**FIRST AMENDMENT TO  
INTERCONNECTION AGREEMENT**

This First Amendment ("Amendment") is made and entered into this 13th day of October, 2015, between the City of San Saba ("City") and LCRA Transmission Services Corporation ("Corporation"), collectively referred to hereinafter as the Parties

**WHEREAS**, the Corporation and the City entered into that certain Interconnection Agreement dated May 21, 2008, and

**WHEREAS**, LCRA TSC upgraded the 69 kV transmission line into the San Saba Substation to 138 kV

**NOW, THEREFORE**, in consideration of the mutual promises and undertakings herein set forth, the Parties agree to amend the Agreement as follows:

1. Exhibit "A" attached to the Agreement is deleted in its entirety and the Exhibit "A" attached to this First Amendment is hereby added to the Agreement in lieu thereof.

2. Facility Schedule No. 1 (including the diagrams attached thereto) is deleted in its entirety and Facility Schedule No. 1 attached to this First Amendment is hereby added to the Agreement in lieu thereof.

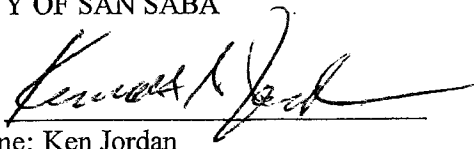
3. Facility Schedule No. 1 (including the diagrams attached thereto) attached to this First Amendment will become effective upon execution of this First Amendment by the Parties.

Except as otherwise expressly provided for herein, the Agreement will continue in full force and effect in accordance with its terms.

--- The remainder of this page has intentionally been left blank. ---

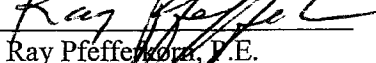
IN WITNESS WHEREOF, the Parties have caused this First Amendment to be executed in several counterparts, each of which shall be deemed an original but all shall constitute one and the same instrument.

CITY OF SAN SABA

By:   
Name: Ken Jordan  
Title: Mayor

Date: 10/13/15

LCRA TRANSMISSION SERVICES  
CORPORATION

By:   
Name: Ray Pfeiffer, P.E.  
Title: LCRA Transmission Engineering  
Manager

Date: 9/1/15

--- The remainder of this page has intentionally been left blank. ---

# EXHIBIT A

Amendment No. 1

[illegible]

## **FACILITY SCHEDULE NO. 1**

### **Amendment No. 1**

1. **Name:** San Saba Substation
2. **Facility Location:** The San Saba Substation is located at 130 P R 400, San Saba, San Saba County, Texas 76877.
3. **Points of Interconnection:** There are six (6) Points of Interconnection in the San Saba Substation generally described as:
  - where the incoming distribution line connects to the tubular bus between switches SS11 and SS13 at breaker SS10.
  - where the jumper from breaker SS10 connects to the 4 hole pad on switch SS9.
  - where the jumper from breaker SS10 connects to the 4 hole pad on switch SS11.
  - where the incoming distribution line connects to the tubular bus between switches SS21 and SS23 at breaker SS20.
  - where the jumper from breaker SS20 connects to the 4 hole pad on switch SS19.
  - where the jumper from breaker SS20 connects to the 4 hole pad on switch SS21.
4. **Transformation Services Provided by LCRA TSC:** Yes
5. **Metering Services Provided by LCRA TSC:** Yes
6. **Delivery Voltage:** 12.5 kV
7. **Metered Voltage and Location:** The metering voltage is 12.5 kV. The metering current transformer is inside T3. The metering potential transformer is located on the 12.5 kV operating bus.
8. **One Line Diagram Attached:** Yes
9. **Description of Facilities Owned by Each Party:**

City of San Saba owns:

  - Two (2) distribution circuits including dead-end insulators that attach to the dead-end structure, conductor, and hardware
  - Two (2) distribution circuit breakers SS10 and SS20 including foundations, jumpers, and protective relay packages

LCRA TSC owns:

The San Saba Substation including, but not limited to, the following items:

  - One (1) 138 kV disconnect switch 1156
  - One (1) power transformer T3 with associated surge arresters
  - One (1) circuit switcher CS1155 with bypass switch 1153

- Two (2) distribution bays including A-frames, trusses, insulators, disconnect switches, surge arresters, 12.5 kV operating bus, bus potential transformers, and metering current transformers
- One (1) underfrequency relay panel
- One (1) station service SS3 with fuse F8
- One (1) transformer bus disconnect switch SS18
- One (1) 12.5 kv bus potential transformer PT6 with fuse F7
- One (1) 12.5 kV mobile transformer connection with disconnect switch SS33
- One (1) control house with battery and battery charger
- Substation property, ground grid, gravel, fencing and other appurtenances

**10. Operational Responsibilities of Each Party:**

- The City will be responsible for the operation of the two (2) distribution circuit breakers serving the City feeders.
- LCRA TSC will be responsible for the operation from the low voltage through the power transformer to the high voltage equipment.

**11. Maintenance Responsibilities of Each Party:**

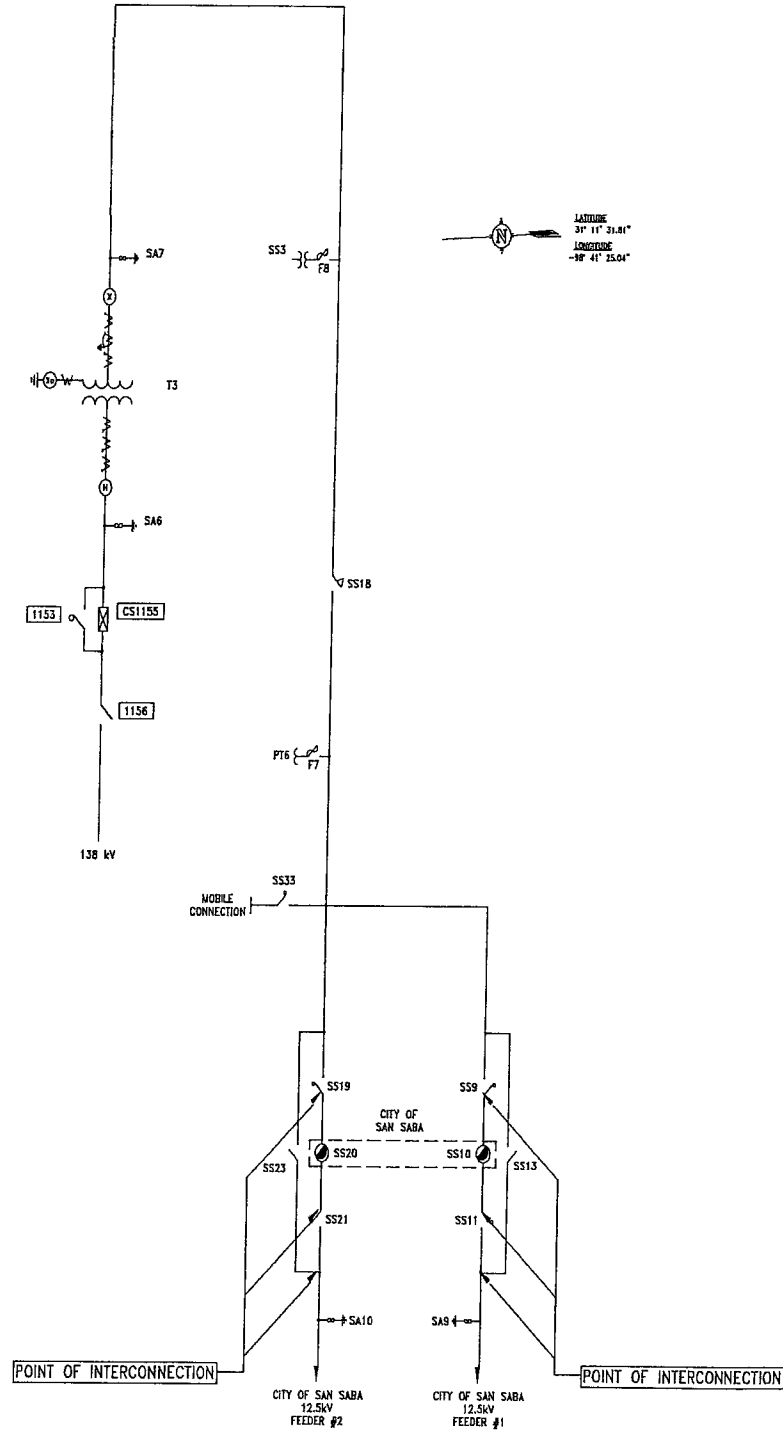
- Each Party will be fully responsible for the maintenance of the equipment it owns.

**12. Other Terms and Conditions:**

- The City and LCRA TSC are to share access to the substation by LCRA TSC locks in the gate and in the control house doors.

# SAN SABA ONE-LINE DIAGRAM

Amendment No. 1



SAN SABA SUBSTATION

THIS IS NOT A COMPLETE ONE LINE DRAWING. FOR A COMPLETE ONE LINE DRAWING SEE DWG NO. S180-E-1-0001

LCRA TSC – The City of San Saba-Amendment 1 Page 6 of 6